

CHRISTMAS AND ANNIVERSARY NUMBER

Radio Guide

TWO PARTS PART I.

North Atlantic Edition
Week Ending Dec. 30, 1933
Vol. III. - No. 10.

5¢



Father Coughlin's
Rejection of
\$195,000 Bid
for Broadcasts

SANTA CLAUS POSED BY COLONEL STÖOPNAGLE



TAKING THE BROADWAY OUT OF RADIO GAGS

By Eddie Cantor

RADIO reaches into the homes of more than 100,000,000 people throughout the United States.

Take a map of the United States. On the border of the Atlantic Ocean, you'll find the State of New York. Look at that dot within the Empire State. It's called Manhattan Island and, within this small area, is that internationally famous street, Broadway. It is inhabited, this avenue, by a tribe of theatrical wisecracks—a handful of people who measure all types of entertainment in terms of seventeen city blocks—Broadway from Forty-second Street to Fifty-ninth Street.

If the comedians on the air were to listen to the ravings of these so-called theatrical wisecracks, their material would be saleable only within the radius of "Wisecrack Square." Now, imagine any successful manufacturer, desirous of creating a market for his wares throughout the United States, concentrating his sales force entirely on Broadway, when there are millions of people miles away from Broadway who are also prospective customers. That's why I say that the comedian who prepares his radio material with an eye to Broadway is on the wrong track.

I think radio audiences are so fed up with jokes and wisecracks that there must be a sharp

decline in the comic market just as there has been in any other industry which has failed to bring sufficient returns on its investment to pay dividends.

In August, 1931, when I started on this coffee hour, I believe I brought a constructive form of comedy to the air. Believe it or not, it had an idea back of it. I was running for President. I belittled the other candidates that might run in opposition to me but every now and then I threw in a couple of jokes that I probably would have thrown out under ordinary circumstances, but these gags were built on a sound foundation, fitted into substantial situations. Yet, I saw to it that the major portion of my comedy was food for thought. You can get away with murder—or I should say—you can get away with an old joke if it is embodied in some central idea of situation.

The mere telling of jokes is child's play. There are books that you can buy for next to nothing—I know all of them—"The Encyclopedia of Comedy" and "How to Be the Life of the Party." I don't understand why many sponsors do not buy these books themselves, read them over the air and thus eliminate the middle man. You know who the middle man is on the air? That's the fellow who's paid to make radio listeners laugh from the middle but doesn't even tickle (Continued on Page 27)



EDDIE CANTOR
"I think radio audiences are . . . fed up with jokes and wisecracks."

MABEL ALBERTSON and PHIL BAKER as the Czarina and Rasputin, the Mad Monk



WHY MABEL WENT WEST VIA THE BOTTLE ROUTE

VERSATILITY, declares Mabel Albertson, is a vice.

And if any woman in radio is qualified to talk about versatility, it is this Mabel Albertson, who teams up with sad-faced Phil Baker and, as Mae West, with Bottle to perpetrate the hilarious comedy sketches heard over an NBC network each Friday night on the Armour program.

The inveterate radio fan could while away a goodly number of winter evenings and miss no end of his favorite programs just trying to recollect a radio actress more versatile than Mabel Albertson, who is the Czarina one week and the Empress Josephine the next, only to turn up as Mae West, Madame Horsefly, the Witch of Endor and an Indian maiden speaking Hebrew dialect, all on successive Fridays. Mabel is all women of all ages, from all lands, on the Armour program, and her characterizations of all of them have set a nation roaring.

But that's not all. To skip rapidly through the rest of her accomplishments and get into the story, she's a swell singer, an accomplished pianist and she's even been in the movies.

But if you want to start something, just make a remark about Jack of All Trades. It isn't the first half of this old saw that tatters the heart of this versatile lady. It's the conclusion. Jack of all trades, in a theatrical sense, she is and has been since first her mother pushed her on the stage at the age of three,

but they have yet to prove to Mabel Albertson that she's master of none.

And the ironic part of it is that all her life the very versatility for which she is known has thwarted her real ambition, which was, is, and always shall be, she avows, to act serious drama.

The woman whose comical impersonations help to make a nation laugh devotes her spare time to attending legitimate drama, symphony concerts, and opera performances, and reading good literature. Life is like that for Mabel and always has been.

Her mother, an actress in stock, put the infant Mabel upon the stage at the age of three. But as a child she was a natural musician, and yearned for the concert stage. At fifteen she did achieve that ambition to the extent of playing in Chautauqua. Then the lure of the theater asserted itself, and Mabel went to dramatic school. Her funds wouldn't permit that to go on very long, so at seventeen she opened her own school of elocution, teaching little boys and girls how to recite, in the best tradition, "Minnie of the Movies". Again the lure of the drama seized her and she pawned her jewelry, gave up the elocution school and descended upon New York in search of a job. Acting jobs didn't appear, and she became piano accompanist for a vaudeville act. Then one day a singer failed to appear and Mabel took advantage of the occasion to try (Continued on Page 27)

"I COULD MAKE A MILLION A YEAR"

Father Coughlin Rejects Riches

By Lewis Y. Hagy

I HAVE JUST refused an offer from a commercial sponsor of \$195,000 for a series of twenty-six broadcasts."

The man who said this in the casual tone that you or I might use in speaking of spending fifty cents was radio's Fighting Priest, the Rev. Charles E. Coughlin, of the Shrine of the Little Flower, just outside Detroit. As he spoke, he leaned against a wall of the vestry of his tiny church, a typed manuscript in his hand which he was about to broadcast in his Sunday afternoon radio address.

"You can't mix religion and commerce," he explained simply when he noted the astonishment his announcement of his rejection of \$195,000 brought to the faces of those who heard him. "I could make a million dollars in a year if I wanted to do that."

This man to whom countless millions have listened during the eight years he has been one of the biggest figures in radio, and who to those millions is an idolized oracle, is as simple and unobtrusive as the fellow who sits next to you in the office.

To hear his vibrant crescendos come through your loud speaker, and then to meet him face to face and chat with him is to know two vastly different persons. In the vestry, he is the priest, cloaked in all the simplicity and humility of a dignitary of the church; five minutes later, seated before the microphone, he is a radio orator with the fire and intensity of a militant crusader.

The transformation is so sudden as to be startling. The priest leans idly against the wall, chatting with friends who admire him. Into the vestry from the church come soft notes, and sweetly the voices of a quartet. Father Coughlin's eyes light at the sound of the singing, and he silences those about him.

"I want you to hear this quartet," he insists. "They're wonderful!"

Incongruously, when you meet Father Coughlin, your mind envisions Jack Dempsey—if you've ever met Dempsey. There is no facial resemblance between the two, but there is a light in the eye and a determined, fighting compression at the corners of the mouth that is distinctive in both.

The simple service in the tiny church ended, Father Coughlin prepares to go on the air, and as the moment draws near, the transformation from the priest to the fighting man begins. Nervously he takes a silver watch from his wrist, and glances at it every few seconds.

SOFT STEPPING acolytes remove the Blessed Sacrament, carrying it from the altar into the vestry. They place on the floor beneath the hanging cylinder microphone of radio station WJR, Detroit, a small table, and a wooden chair. Father Coughlin smiles at his friends in the vestry as though he were taking leave of them, and walks to the steps that lead from the altar to the body of the church. The crowd, jammed into every seat in the little edifice, stills.

"If there are frogs in any of your throats, or if you want to cough, or scuffle your feet on the floor," he adjures them, "do it now, and get it over with."

In an instant, there are coughs and little sounds from at least two hundred of the four hundred and fifty throats; feet scrape on the wooden floor; seats squeak beneath squirming bodies. Amid the relative din, Father Coughlin turns and takes his seat. All is silent again.

Charlie Penman, the WJR announcer who has handled Father Coughlin's programs for more than a year, takes his place beside another microphone, and puts the priest on the air.

Father Coughlin speaks at first in calm and even tones. Perhaps for five minutes he makes not a gesture, and his voice, clear and sharp, remains at low pitch. Then he warms to his work.

Suddenly, startlingly, he shouts a ringing phrase, shaking his head back and forth tensely as he speaks. He passes his notes from his right hand to his left, and flings out the right arm, fist clenched, the veins in his hand and wrist standing out blue and visible. His face



REV. CHARLES E. COUGHLIN

... received 8,000,000 letters in three weeks ...

grows choleric red as he bristles indignantly over some wrong.

Then, as suddenly, his voice sinks again to a low but clear and audible whisper, and his frame relaxes in his chair, as he speaks felicitously of some good that has been brought about.

WITHIN fifteen minutes after he has started his address, Father Coughlin drips perspiration. As he shakes his head to stress some vigorous point, large drops cascade from forehead, cheeks, and neck, as if he were a man who has just stepped from a shower bath.

No wonder he loses about three pounds each time he broadcasts! No wonder when he goes off the air, he will speak to no one, dodging the throng of admirers who want to shake his hand, get his autograph, express their appreciation of what he has said. He goes straightaway to the little gray frame parish house near the Shrine, and goes to sleep. In some cases, that is the first sleep he has had in many hours, for he often sits through the night before preparing his broadcasts. The Sunday I talked with him, he said he had slept but two hours in the past forty-eight. But he looked fresh and rested, and certainly there could have been no more vigor and intensity in his address.

There is a hard and fast rule that is observed by every employe of the parish, even by Father Tully, Father Coughlin's assistant, with whom he lives in the little gray frame house. That is that on Thursday, Friday, and Saturday, the priest will receive no telephone calls, no visitors.

"Even Father Coughlin's own mother," one of the attaches of the parish told me, "couldn't get him to the telephone on those days."

Incidentally, the priest's mother and father live in Detroit, where he was born.

Telephone calls, letters, telegrams come in truck loads to the parish house, and to the vast offices atop the tall main tower of the new Shrine which is in the course of construction. Father Coughlin has a staff of eight secretaries who handle his more personal affairs, while a force of one hundred and four girls attend to the radio mail.

That mail, incidentally, reached a total of eight million letters in a period of three weeks recently.

The eight private secretaries all play a part in the preparation of Father Coughlin's weekly radio addresses. The priest prepares the address himself, usually writing it in longhand on sheets of foolscap. Then, when completed, it is parcelled out, a few random pages to each secretary, so that none but Father Coughlin himself knows before he steps to the microphone and delivers the address, what he will say. There is but one

copy of each address, and that one guarded with zealous care.

At the present, Father Coughlin is delivering a series of eight addresses on the subject of Currency, and when the eight have been delivered, he has arranged to have a million sets printed in book form. These will be sent free to the first million radio listeners who write and ask for one.

Father Coughlin has vast and ramified sources from which he derives the information and statistics he uses in his radio talks. He makes frequent trips to Washington, where he has many personal friends among men high in government circles; he has a huge economic library in his office and a still larger library of diverse reading at his father's home.

Eight years ago, he first broadcast over station WJR. Leo Fitzpatrick, the general manager of the station, had known Father Coughlin for many years, and even then, when radio was in its infancy, realized that the priest would be a "natural" on the air.

FOR THE FIRST year, Father Coughlin's broadcasts were confined to the listeners of the Detroit station, and the following year, his fame as a speaker having spread, he was put on an independent network of three stations.

Today his voice is carried each Sunday the length and breadth of the nation over a network of twenty-six stations, and in radio he is estimated to have one of the three largest audiences in the world, only those of Amos and Andy and President Roosevelt being comparable in numbers.

Early on Sunday mornings the cavalcade of motor cars and interurban passengers begins to pour into the little community of Royal Oak, thirteen miles outside Detroit, where the Shrine of the Little Flower is hidden among tall trees that stand about it on three sides.

Long before the visitors near the Shrine, however, they sight the towering stone tower of the new Shrine, which was begun last August, and which will take several more months, and about a million more dollars to complete. When finished, it will have cost in the neighborhood of two million dollars, "at depression costs," Father Coughlin explains.

The new edifice, when completed, will be able to accommodate nearly three thousand.

Perhaps this radio fame came to Father Coughlin because he clings closely to the axiom he is fond of repeating. He says:

"Every minister of holy religion must throw into the conflict all the energy of his mind and all the strength of his endurance."

Which, is perhaps, as good a recipe for the acquisition of fame and success as any you might find.

UPSETTING THE CLOCK OF FAME

Irene Rich, motherhood and married life behind her, faces future in radio fearless and unafraid



IRENE RICH, one of radio's newest discoveries, but one of filmland's stand-bys, believes the unexpected is her luck charm.

While some people dread the fate that is just around the corner for them—flinch at the future—Irene approaches it with enthusiasm because it has always brought her more glory, more success and far greater things than she had dreamed about.

"You know I've lived my whole life backwards," she confessed laughingly.

"I married at the time most girls were planning careers. I had my children and domesticity while other girls of my age were dancing the nights away and wondering whether their best beau would pop the question. Now, at the time when I should, if I were an average person, be having my home life. I am husbandless and just entering an exciting, new career."

One would be inclined to agree with Irene that she had lived her life backwards for at 42, she has the same, lithe figure that she had at sixteen. So slender and willowy, in fact, that when a sponsor recently wished to choose a radio star for their air series, they wanted a walking ad such as Miss Rich.

While in New York, Miss Rich was asked to audition for another product, but it was not a product she could believe in. She refused the contract. However, when her present sponsor expressed interest in her work, she gladly accepted it because she believed in the product.

That is one of her greatest assets. She never does things she doesn't believe will work out. She has to believe in things. That is why she has decided to play no movie part that does not suit her. She won't be a misfit. Perhaps that is the reason for her success.

For the past two years, Irene has been in vaudeville and in stage plays rather than play parts she didn't like in Hollywood. When a part was offered her that

IRENE RICH
... at 42, she has the same lithe figure that she had at sixteen. . . .

she could get teeth into, she played it, but immediately returned to the stage when the role was finished. In New York, she has just finished playing in "When Ladies Meet." She enacted the same role Ann Harding did for the movie version of it.

She was also a guest star in "The Late Christopher Bean."

But back to the unexpected. Irene's first long term contract in Hollywood arrived that way. She had a minor part in a film, but the director, seeing great possibilities in the part, enlarged upon it day by day, until the part became a major one . . . in fact, so important that it overshadowed the star in the picture. As a result, Irene's entire role was cut out because the star must glisten and glow in a picture . . . not an incidental character. Irene, thinking her part was still intact, rushed down to the projection room when the film was completed . . . huddled in her seat in breathless excitement, only to watch the story unfold without one scene in which Irene had appeared.

Her disappointment became something of a tragedy, but she hurried home tearless, hurt and unhappy. She had to do something to stop that pounding in her chest . . . it hurt! Work. That was it! She seized a monkey wrench and decided to fix the brake in her flivver. As she worked, a tear or two came to her relief



IN HER HOLLYWOOD GARDEN
... A snapshot of the beautiful Irene at the height of her glory as a film favorite. . . .

and splashed down her cheeks. She rubbed them away with her greased hands, leaving black smudges on her face.

Suddenly she heard a voice. It was her director and here she was looking like a garage mechanic. She faced him, looking the pathetic figure she really was.

"Well, go on and tell me (Continued on Page 23)

Radio Guide, Vol. III, No. 10, Week Ending Dec. 30, 1933, is issued weekly by Radio Guide, Inc., 551 Fifth Avenue, New York, New York. Entered as second class matter at the Post Office, New York, N. Y., February 24, 1932, under Act of March 3, 1879. Copyright, 1933, by Radio Guide, Inc. All rights reserved. Advertising offices, 551 Fifth Avenue, New York; editorial, executive and circulation offices, 423 Plymouth Court, Chicago, Illinois. Herbert Krancer, Pres. and Gen. Mgr., M. Koenigsberg, Editorial Director, E. E. McCleish, Adv. Mgr. Unsolicited manuscripts received only at owner's risk should be accompanied by stamped, self-addressed envelope for return. Five Cents per copy in United States. Subscription rates: Six months, \$1.25; one year, \$2.00.

STOOPNAGLE'S LATEST CLUE

NUMBER TWO: THE CANFIELD CASE

By Stoopnagle and Budd

WELL, here we are at number two. And what a tale this is going to be! A man murdered by the Queen of Clubs as he played solitaire! A form buckled up in death! Several broken dishes and a butler who spoke in broken English! That gives you, perhaps, an inkling of the story I am about to tell.

The whole thing started while Budd-Watson and I were playing lawn-tennis. Just as Budd-Watson served me a "sizzler" to side court, there was a gay shout, and I missed the return entirely for having wheeled around to see where the shout was coming from.

"Oh Colonel Holmesnagle!" cried a voice which later turned out to be only a gramophone record.

"Yes, I replied, quite out of breath from the "sizzler".

"Come at once to Nordstrom Van Bothington's suite, I think there has been foul play of a sort."

So, turning to Budd-Watson, who by this time was at the net, I said, "That serve doesn't count or I'm not Sherlockuel Q. Holmesnagle."

Budd-Watson, quick as a flash, came back at me with "Nertz, Colonel." That was like Budd-Watson.

When we arrived at Van Bothington's suite everything was in a positive uproar. Chairs were overturned, the goldfish were in the canary's cage and the canary was beside himself with joy. That made two canaries, but it really has nothing to do with the case, especially.



COLONEL HOLMESNAGLE and BUDD-WATSON hard at work in their crime detection laboratory. They are on the point of running a clue to earth or something.

the faults of the victim might have been, he had never caught himself cheating at solitaire. I dismissed her plea with a gesture.

I devoted the next few moments to concentrating my deductive powers on the problem of devising a punishment that would fit the crime. The Queen of Clubs could not be hanged or sent to the chair. She could be decapitated in the time-honored fashion so much practiced in the days of good old Queen Bess but, since she had two heads, that would be a bit complicated too. I decided to leave that stuff to the lawyers and judges and things. It was getting too involved for me.

She seemed to shiver as she lay there on the table awaiting my decision with apparent nervousness but my keen eye detected the fact that it was a random breeze that stirred her thin form. She had fainted.

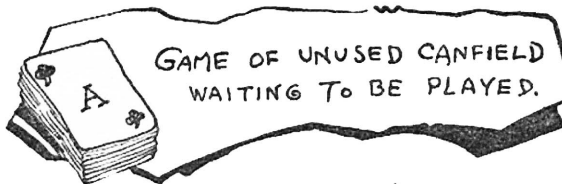
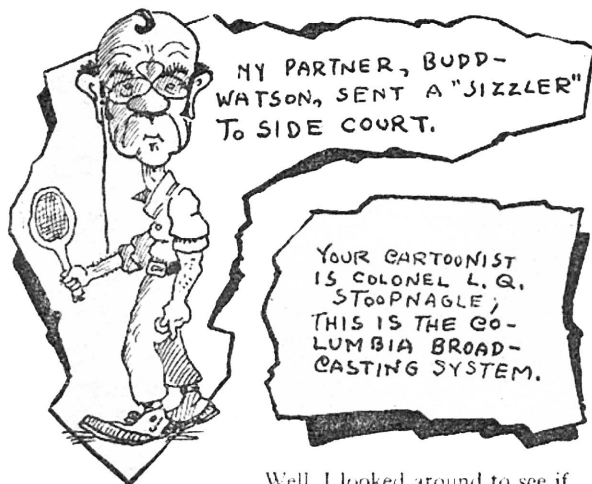
Suddenly I remembered that I had left Budd-Watson on the tennis court by himself. This was serious, as the quaint fellow long ago developed a strange habit of playing solitaire tennis. He would serve the ball, then, with the speed of an express train, jump the net, reach the opposite baseline in time to return the serve and then repeat the process until he caught himself off balance and lost the point. If he would only desist after one or two plays it would not be so bad but he would continue this strenuous sport for hours on end until he collapsed in a heap.

This practice of Budd-Watson's has always been a great source of worry to his friends. It was an axiom or a proverb or something with all of us that he must never be left alone on a tennis court and here, in the excitement and all, I had completely neglected my plain duty. I was distraught at least and possibly worse than that.

And then in a daze, I crept slowly back to the tennis court where Budd-Watson was batting the ball up and down in the air to kill time.

"Did that last serve count, Colonel?" he queried, as he raced along the back line.

"Budd-Watson, I already have given you my decision," I replied cautiously. "That last serve didn't count." That was just like Budd Watson, always funning.



cloud of nearby dust. And here I turned my thoughts to Bothington and Canfield. I had never played Bothington, but I had played Canfield, whom I often trimmed. Bothington was a team which our coach would never let us play because most of the boys at Bothington were rowdies, to use the slang expression.

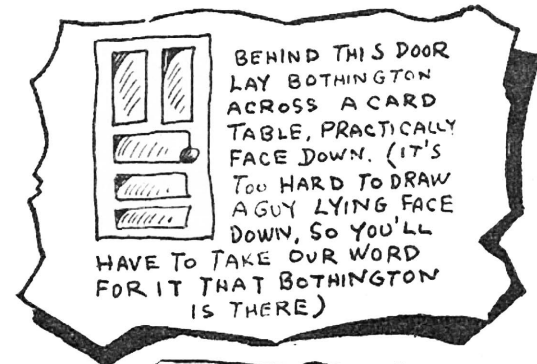
AS I lifted the murdered man to his feet, I happened to look down at the table. The Queen of Clubs had moved. I looked closer. There was a sort of pallor in her pretty face and I noticed that when I looked at her intently, she turned away. Could this be the solution to the murder of Bothington? I wondered. . . .

The rest is criminal history. It seems that the Queen of Clubs had hidden herself away in the folds of Bothington's stiff-bosomed shirt. Bothington had neglected to count the cards before he sat down to play. And just at the time when he needed the Queen to win the game, and called rather angrily for her, the Queen jumped up and cut him a deep gash alongside the heart. Then she quickly jumped out on the table and kept very quiet, hoping that she wouldn't be noticed.

But with my eagle eye I found her, the wretch, and brought her to task for having committed this horrible crime. To this day she still wishes she hadn't run afoul of me.

Black-hearted wretch that she was, she tried to evade the issue by casting aspersions on the memory of the deceased. She accused the late Bothington of secreting her in his sleeve but I was convinced that, whatever

News Flash
Don't fail to follow the further adventures of Colonel Stoopnagle and Budd in the field of criminal investigation. Watch the pages of RADIO GUIDE for further chapters of "THE STOOPNAGLE CLUES", such as: "Who Stole the State of What's-the-Use?" "Without Lawrence in Arabia." "The Radio Announcer Murder. Hurrah!"



Well, I looked around to see if I couldn't find some evidences of murder. At first I could see nothing, but looking more carefully, I found the crumpled form of Bothington lying across a card table, face down. In front of him, on the table, were the remnants of a game of Canfield.

It happens that I knew Canfield quite well, having had several tilts with him at badminton, so I could hardly believe my eyes. Had Canfield done this thing? Was there a motive for the crime? How many aces had Bothington got out? All these questions and several others flashed across my brain as I stood there with bowed head, trying to tighten the strings on my racquet.

"Bothington! Bothington!" I cried. "Who has done this thing to you?"

But nary a whimper from Bothington, who by this time was entirely dead. And then it was that Budd-Watson stepped up.

"Come on back and finish our game, Colonel," he said.

"Not I, Budd-Watson," I answered, with a bit of a tear. "Not until this mystery has been settled once and for all. And besides, I feel it my duty to finish the game of Canfield which Bothington started, because I saw a place where the red seven could go on the black eight."

Budd-Watson gave me a nasty look, which I have kept ever since, turned on his heel and disappeared in a

Along the Airialto:



Paul Whiteman and Ferde Grofe discovered that conventional musical instruments are not adequate for producing the desired effects in Ferde's "Tabloid" suite. Here they are armed with a "tommy gun" and a linotype machine respectively, and the effect is the musical equivalent of a tabloid paper. Too bad this page isn't wired for sound.

By Martin Lewis

WHIO SAYS that miracles cannot be? Harken: Jane Froman—Jane, "the lovely one"—has signed a contract to make full-length flicker features! The contract is scheduled to keep Jane plenty busy after she closes her current "Follies engagement. She'll be leaving for Hollywood in April . . . And why is this a miracle? Jane had an old failing that absolutely barred her from the talkies. She stuttered! And she's conquered it. By sheer force of will she overcame it. Miracles? Well . . . My contemporaries who scribble about radio, have been making much about Nino Martini's contract. Seems that said contract is with the Metropolitan Opera Company, and Met has an exclusive tie-up with NBC. That's the rub, for Martini has been built to the highest pinnacles over CBS. However, CBS wins the last snicker. Nino will continue on the CBS Seven Star Revue, from which he had been scheduled to bow farewell on the twenty-fourth.

Lanny Ross, who leaves soon for a picture engagement in Hollywood, already has been cast in two productions. Featured, too. In "Murder at the Vanities" and "Melody in Spring." Both productions are to be released in the Spring of 1934.

NBC's polo team includes Will Rogers, Frank Parker, and Robert Simmons. Shortly after the first of the year the team will make its debut under the auspices of Mrs. William Randolph Hearst's Milk Fund. Frank Parker, who captains the team, will lead his men against a quartet headed by Captain Jack Henley.

Remember Doctor Ortiz Tirado? He sang in two series of concerts over NBC networks recently. He's the Mexico City surgeon who is also leading tenor of the Mexican National Opera Company. On December



PATRICIA DORN musical comedy star, who sings duets with Donald Burr weekly on the Voice of America programs.

14 he was the guest of honor at a farewell dinner tendered by the Pan-American Medical Association, at the St. Moritz. Doctor Tirado has returned to Mexico, where he will continue his duties as director of the Morales Hospital.

Arlene Jackson, NBC's petite contralto, is spending the Christmas holidays at her home in Toronto. And another Canadian, Gloria La Vey, is pinch-hitting on Miss Jackson's Music Box program . . . Betty Barthell is another who deserted the Big Town for the holidays. She went home to Nashville.

Howard Barlow, the Columbia Symphony maestro, has been spending considerable time lately on research. He has unearthed a great deal of worth-while music by contemporary Russian composers. He intends to introduce many of the Soviet compositions on his CBS afternoon spots. This will be the American premiere for all of them, and the World radio premiere for many.

Reed Brown, Jr., is another who has gone over to the flickers. Remember him? He plays Elizabeth Love's Yankee Soldier "Honey" in the "Roses and Drums" Civil War dramas. He's going to play the lead opposite Miriam Hopkins in Owen Davis' new Broadway Play, "Jezebel." Young Brown is one of the more successful of Broadway's juveniles.

Casa Loma Band of Beef

ANY football team looking for a fine addition to the center of next season's line, shouldn't overlook the trio of young men in Glen Gray's Casa Loma Orchestra. Witness: Saxophonist and President Gray stands six feet four and weighs 220; Trombonist and vocalist "Pewee" Hunt is six feet two and weighs 235; and pianist Joe "Horse" Hall, the baby of the trio, is six feet one, and weighs 225.

Some of the less conservative music lovers have raised objections to the staid programs of the Philharmonic Symphony. Hans Lange, formerly assistant conductor of that worthy organization, has come through with a promise that will meet these objections. He intends to provide a number of musical novelties during his conductorship, starting with the broadcast of December 24. For that day he'll have a special symphonic program in the Yuletide mood . . . Alex Gray, the virile baritone, is torn between two loves: One, his radio work; and two, his gold mine in Canada. During his recent absence from radio he spent a great deal of time prospecting; he has developed a valuable claim . . . Do I hear rumblings of a shake-up on the Voice of America series over CBS?

Good thing Isham Jones doesn't radio for a cigarette sponsor. Why?—All except one of his musicians are confirmed pipe smokers. The one exception, a trumpet-tooter, refuses to woo Lady Nicotine in any form . . . And now it's Christmas Day that will bring the much-deferred opening of the Oldsmobile CBS show. It'll include Kostelanetz, Howard Marsh, and "Funnymen" Bob Benchley . . . Since the Fred Allen Friday Night shows are off the air, a conflict has been removed. Jack Smart consequently has returned to the March of Time cast. He was one of the principal members. If you hear "Huey Long" orating on the M of T, that'll be Jack; it's one of his many versatile characterizations.

Louis Dean Quits Air

As forecast exclusively in this space a week ago, we will now make further scoopee and tell you that Louis Dean will cease to be a Columbia announcer in a few days. He will start the new year with a new position, that of program manager for the Campbell-Ewald advertising agency in Detroit. This agency produces several big programs on both networks. A swell break for a grand guy—good luck to him!

Is George Beatty having sponsor trouble? You tell us. The sponsors decided to do without him. Then they changed their minds and retained the comic. Must have been a further change of mind, for he was missing from last Sunday's American Oil stanza. Nobody seems to know whether he'll be back next time; sounds like \$\$\$trouble . . . I like Goodman Ace's latest Christmas gag, the one about the stores being full the day after Christmas because everybody seemed to be doing

MOVIES LURE LA FROMAN IN AGAIN, OUT AGAIN BEATTY

their Christmas swapping early this year . . . That Bing Crosby show has evolved into quite a variety offering. It struts the talents not only of Bing, but of Lenny Hayton, the Mills Brothers, and Kay Thompson and her Rhythm Kings, as well . . . When we asked Maestro Andre Kostelanetz for his selection of the year's five most popular dance tunes, he made one reservation. Said he: "I'll give you my idea of the five most popular, but not the best five. I think the year's best dance tune was Hoagy Carmichel's 'One Morning in May'" . . . Personally, I don't recall the piece, but I have a sneaking idea that it will bob up as one of next year's most popular numbers. Hoagy, you know, has a way of writing songs that come a little sooner than folks are ready for them.

A Silly Game

After listening to too many mystery programs the other night we tossed around with insomnia. And we spent the wakeful hours evolving some silly little games that called for the use of radio stars' names. This one, frinstance, is The Radio Rainbow. Maybe some of you can think of additional colorful names to add to the list: There's Alex, Carolyn, and Glen Gray, Rosaline Greene, Mitzi Green, Johnny Green, Red Nichols, Don Redman, Frank Black, Roger White, Billy White, Julius Tannen, Himan (Little Italy) and Bobby (Myrt and Marge) Brown, Bruno Walter, Enoch Light, Oliver Smith, Myrtle Vail, Rose Keane, Mildred Rose, Heliotrope (Tony Wons says that's his maid's name), Poet's Gold, Old Gold, Abner (songwriter) Silver, Lou (maestro) Silvers, Blanche Calloway, Ben Blue, and lotsa blues singers, Navy Band, and plenty of yellors . . . Too bad the Cherry Sisters aren't around on the air . . . And what have you to suggest that will expand the radio spectrum?

Camel cigarettes are not going to rest at ease with their two half-hour shows on CBS. Reports are circulating that the same sponsor has reserved, in addition, five nights a week (6:45 to 7 p.m. EST) over the NBC

Baby Rose Marie, darling of the air waves, in a characteristic microphone pose.



FRANK PARKER
one of radio's better polo players, is polishing a shoe tree with a Fuller brush in preparation for a few chukkers.



"SO YOU'RE THE GUY"
cries Bobby Brown (left), producer of "Myrt and Marge," to Bob Brown, NBC announcer. Bobby and Bob, although with rival networks, are constantly getting each other's mail and each other's phone calls.

WEAF network . . . Bing Crosby and Lennie Hayton's orchestra are to part company at the expiration of the present contract, so far as the sponsor is concerned. Hayton is reported to have had trouble getting the musicians he wanted on the coast. We're told, too,

that there is plenty of fireworks between the artists and the agency . . . Marion Talley is said to be wanted by radio sponsors, and NBC is negotiating for her signature. She gave her first concert of the season in Virginia on December first, and is reported in great voice . . . Max Baer, the heavy-weight, didn't guest-star upon his arrival in Gotham because he asked \$2,500. Several sponsors are dickering yet . . . Babe Ruth turns radio performer for the Standard Oil Company with a show that starts on discs in twenty-seven different cities . . . The cigar commercial of Frank Crumit and Julia Sanderson (Blackstone) has been sold off the air to the medicinal sponsor of the new Fred Allen show (Sal Hepatica). The newcomer took the same time, but on an NBC coast-to-coast network, which the cigar account didn't have . . . Three terrific shows may never reach radio because of the inability of the networks to clear time. Which goes to prove there's room for a third network.

Don't get the idea that Katherine Hepburn's \$5,000 fee will set a precedent for high salaries. Producers of her show, which starts January 7, figured that she was worth the money for one shot because of her "Little Women" film success . . . Pepsodent is now radio's largest user, with three half-hours being cleared, and Amos 'n' Andy and the Goldbergs six quarter-hours each. The cigg account that formerly sponsored Jack Pearl (Lucky Strike) ranks next with the two and one-half hour show of the Metropolitan Opera . . . The

Revelers have been flooded with offers to make concert appearances since they returned recently to the concert field by one appearance in Mount Vernon . . . Lee Wiley, the melancholy songstress, is responsible for the newest form of song-plugging: Now when publishers offer her songs to sing they include a "song drama" with each, so that she can decide if she wants to dramatize the song.

Double Celebration

Vera Van celebrated the anniversary of her sixth month with CBS simultaneously with the start of her first commercial, last Saturday night . . . Abe Lyman just put his signature on the dotted line of a Music Corporation of America contract, which guarantees that he will be in the limelight for the next ten years . . . funniest parts of the Cantor shows come when Bergman Eddie Cantor wrote: "To the most useful man in radio" . . . Is it just me, or have you noticed, too, that the funniest parts of the Cantor shows come when Bergman impersonates Rubinoff, Frances Ames the Russian wife, and Patsy Flick the Uncle?—I wonder when they're going to put Rubinoff's offspring on the program. They seem to add to the family each week. It's a great combination and should be continued. Incidentally, the maestro-violinist's contract had just been renewed for 1934, meaning that the new contract will carry him through almost four years of uninterrupted radio work.

When Harry Salter's Campus Choir made its debut on the Troubadour program, it received so many raves that the outfit was hired immediately for the following week's program . . . Little Jack Little and his orchestra now have a five- (Continued on Page 19)

Boy Idol of Air Veteran at 12



SKIPPY

Franklin Adams in real life, is the radio voice of every growing boy. This explains his popularity.

YOUNG Franklin's stage training actually began when he reached the age of seven, an age when most children are confining their knowledge of stage lore to uproarious appreciation of Mickey Mouse. But when Frank-

lin was seven Benny Meroff, at that time master of ceremonies and band leader at the Granada Theater, opened his dancing school on the North Side.

Franklin enrolled, and under Meroff studied tap dancing and took saxophone lessons.

Franklin and his sister Jane studied assiduously under Benny Meroff for two years, and they learned to sing and dance together so well that they became much sought after for amateur theatrical entertainments. They had a natural bent, it seemed, for impromptu comedy, and when they appeared at recitals or club gatherings, their exuberant mirth more frequently than not stole the show.

At that time, Franklin and Jane were attending Sunday School at the People's Church, and Franklin's happy smile and ever-ready boyish wit endeared him to the teachers and the other children.

HIS dramatic ability had attracted such wide attention that when the Uptown Players, in conjunction with a church affair, put on the play "Happiness," Franklin was chosen by the director for one of the important parts. His success was so marked that he was also cast in one of the leading roles in the Players' succeeding production of "Is Zat So?"

A prominent member of the church, who also was interested in the Jack and Jill Players, a children's theatrical group under the direction of Marie Agnes Foley, was attracted by Franklin's dramatic ability, and persuaded his parents to enroll him in Miss Foley's organization. After a period of Miss Foley's diligent coaching, he attracted even more attention when he was assigned to a part in the Jack and Jill Players' "The Magic Bell."

Miss Foley's favorable impression of the boy's talent made itself evident in concrete form a few days after the production of "The Magic Bell" when the manager of the Shubert musical operetta "Three Little Girls" sent out a hurry call for a little boy to take the part of the son of the hero during the play's run in Chicago.

Miss Foley hearing of the vacant part, hurried downtown, interviewed the manager, and sold him the idea of giving her protegee a tryout in the role.

And if that, a start at the age of nine with a play running seven months, doesn't make this lad of twelve a veteran of show business, it is hard to understand what would.

Of course, with a start like that, theatrical engagements and offers came faster (Continued on Page 13)

WHEN you think of a veteran of show business, you visualize a portly and highly manicured thespian who struts up and down Broadway telling all who will listen of the good old days when he and Sir Herbert Tree scored their signal triumph in Shakespearian presentations. Certainly the term would never bring to your mind a typical American schoolboy of twelve years.

But when you refer to young Master Franklin Adams, the "Skippy" of the airwaves, as a veteran show business, you are confining yourself strictly to fact, although Master Franklin is just twelve years old.

They hear Skippy's counterpart right in their own school yard every recess.

Indeed, to Skippy's own schoolmates in Chicago, he is not Skippy, the radio celebrity. He is Skippy, their pal, and when they are playing together, there is nothing in Skippy's manner to remind them that he is of the stage. He's just one of "our gang"—just as natural and boyishly himself as any one of the kids right there in his grade. He's that kind of boy; a typical young American, twelve years of age.

Skippy's rise to fame has been a great deal smoother than many of the adult actors who not even yet, after years of effort, have reached similar eminence.

Young Master Adams was born on May 27, 1921, in Chicago, where he still lives with his mother and father on the North Side. He is the youngest of three children. His brother is twenty-two, and his sister fourteen.

BROADCAST FROM HOSPITAL

A drama within a drama, a program broadcast from a hospital room for four days while one of the principals in the cast lay ill in bed, was enacted in Chicago, while the thousands listened unaware of the difficulties besetting the actors and actresses.

During a recent broadcast of the Jack Armstrong All-American Boy program from the Chicago studios of the Columbia Broadcasting System, little Sarajane Wells, who portrays the part of Gwendolyn Deval on the program, complained of feeling ill. She went through with her part, however, but at its conclusion, David Owen, the director, insisted upon her seeing a doctor.

The physician found that an abscessed tooth had become so infected that it would be necessary to take her to the Grant Hospital, have the tooth removed, and her jaw lanced. He said the girl would have to remain at the hospital for a few days.

Sarajane, realizing that, if it became necessary to write her part out of the script, she might lose the opportunity for which she had striven, worried so much in the hospital that her recovery was retarded.

Owen sought a girl to take her place in the part, and during the three days he searched, auditioned dozens

of young girls of about Sarajane's age without success.

Finally, in desperation, he appealed to the hospital authorities, and persuaded them to permit lines to be run into Sarajane's room. There, cloaked in secrecy because it was desired to prevent the news from leaking out, the cast assembled, went on the air with Sarajane propped up by pillows, and the plucky little girl and the other players went through their parts without a hitch for four afternoons.

James Ameche, brother of Don, who takes the part of Jack Armstrong, Scheindel Kalish, who plays Betty Fairfield, Arthur Van Slyke, who is Coach Hardy in the script, Henry Saxe, Bill Myers, and John Gannon, the other members of the cast went through their parts under great difficulties because of the unusual conditions but there was never a suspicion of anything wrong during the four broadcasts.

And physicians ventured the opinion that the cooperation of the director and the rest of the cast in staging the broadcast from the hospital room might have prevented Sarajane from suffering complications that would have been brought on by her worry over being left out of the play. Certainly, they say, it speeded her recovery.

(Picture on Page 14)

CHRISTMAS AND ANNIVERSARY SECTION

RadioGuide

PART II. Week Ending Dec. 30, 1933



by
M. H. Lylesworth

PRESIDENT OF NATIONAL BROADCASTING CO.



by
William S. Paley

PRESIDENT OF COLUMBIA BROADCASTING SYSTEM

THE National Broadcasting Company, from its new home in the RCA Building, Rockefeller Center, takes pleasure in extending cordial greetings to RADIO GUIDE on its second anniversary.

Everything connected with radio seems to progress rapidly. That is a characteristic of the industry, which itself is only thirteen years old. RADIO GUIDE, as an ally of the industry, has progressed with equal rapidity to establish itself in the short period of two years. The progress of the publication is exemplified in its new and attractive dress.

Broadcasting, by its very nature, has created a wide public interest in the personalities of broadcasters. In helping to satisfy this interest, RADIO GUIDE performs a service of three-fold nature to the listener, to the artist, and to the industry.

Inasmuch as the continuously increasing success of RADIO GUIDE is another proof of the always mounting public interest in radio, I am particularly happy to extend birthday congratulations on behalf of the National Broadcasting Company.

May this be only the second of a long series of such anniversaries.

RADIO broadcasting is rapidly gathering background and tradition. So swiftly that some of us close to it are amazed, it has reached adult stature as a medium of entertainment, information, and public service.

But if broadcasting has grown up, it has stayed young and must by its very nature forever maintain the ambition, the energy, the flexibility of youth. With radio sets in more than 17,000,000 homes, broadcasting has so permeated the lives of most Americans that it has become more than ever imperative for us to strive continually to reach higher levels each year. What may have been brilliant program material five years ago may well be inadequate and outworn today.

Columbia programs have gained in both variety and quality of appeal, and radio showmanship has marched forward. And in no single year have so many sponsors presented programs which appeal to the most cultured and the best educated listeners. Public response gives the lie to the oft-repeated slander that the radio listener lacks intelligence. Indeed, I doubt if the average man who utters this slander (Continued on Page 2-A)

RADIO YOUNG BUT GROWING UP

-Paley

(Continued from Page 1)

realizes that he attacks most of the people he knows and likes and respects every time he belittles the radio audience. The popularity of such sponsored artists and features as the Philadelphia Orchestra, William Lyon Phelps, Albert Spalding, and Nino Martini, points to a definite increase in the levels of audience appreciation.

In forecasting the coming year, we can logically expect an extension of the trends of the past year, both in the quality of talent and in the showmanship of radio technique. We expect the variety show to reach new heights in the popular amusement field, and we may look to generally longer programs—a trend that has lately been evident. Educational and informative programs, because of the economic situation throughout the world, have never evoked more interest than at present, and there will certainly be no diminution of that interest in the twelve months to come. International exchange programs, exemplified by Columbia's exchange series with Canada, Pan-America, and Europe, fostering international goodwill, originated during 1933, and the Columbia network intends to continue its pioneering in this regard. We shall also give much attention to radio drama and continue the experiments which will evolve a more mature technique for the radio play.

Such leading broadcast publications as RADIO GUIDE are strong allies to the broadcasting industry, in its constant attempts to keep in pace with the tastes of

the listening public. We commend RADIO GUIDE's success in its first two years of publication and trust that it will continue its course of service for many equally successful years.

Kilocycles and Meters: Here's the Explanation

Most confu(hing of all radio terms to the layman are the terms "kilocycles frequency" and "meters wavelength." These are not as difficult to understand as they sound.

Radio broadcasts are carried on electrical "waves" and the length of these, from crest to crest, is measured in meters (a meter is a few inches longer than three feet in length). The number of waves (measured from crest to crest) that a station sends out in *one second* is its frequency. One wave is known also as a cycle.

When a station announces that it is broadcasting on a "frequency of 870 kilocycles," it means that 870,000 waves are going out from its antenna each second.


To my many friends everywhere
SEASON'S GREETINGS
and
BEST WISHES

Vera Van

MERRY CHRISTMAS

WARD and MUZZY

N.B.C.



*With every good wish
for the holiday season
and the new year
Sincerely
Phil Huey*

Season's Greetings
Mark Warnow
CBS

Wishing You Everything
You Wish for Yourself
Robert Bentley
WFBC

Season's Greetings

N.B.C.

Oriental Gardens

23 W. Randolph St.
Chicago, Ill.

DANNY RUSSO and HIS ORIOLES with PEGGY FORBES

SEASON'S GREETINGS

from

NORM SHERR and **EDDIE HOUSE**

Pianist Organist

Columbia Broadcasting System and W B B M

ISHAM JONES

AND HIS ORCHESTRA

COMMODORE HOTEL

Sustaining Broadcasts — Tues., Thur., & Fri.
11:30 to 12 p.m.

THE BIG SHOW
9:30 to 10 p.m., Monday

WABC--Coast to Coast

CONGRATULATIONS TO RADIO GUIDE ON YOUR SECOND ANNIVERSARY!!!

And Season's Greetings to Our Mutual Friends from

SMILIN' ED McCONNELL and his SPONSORS

ACME PAINT—CBS
Coast to Coast Network

ALADDIN LAMPS
WLW-WJR-WSM (in person) and 100
other Stations by Transcription

TUXEDO FEEDS
Center of Population Group
WCKY-WHAS-WSM

G O D B L E S S Y O U A L L

The Song Hits of 1933

As Picked by America's Ace Orchestra Leaders



Above, Phil Harris, whose orchestra has done much to popularize the leading song hits of the year. At right, Wayne King, the busiest band leader on the air waves.

THE Last Roundup," was a very popular song during 1933. So was "Stormy Weather". Likewise "The Big Bad Wolf" and "Lazy Bones." And then there were a few others. All that information is gleaned from the country's leading band leaders, who were asked to give their views as to what songs were the most popular and best during the past year.

All the way from Buffalo, the Old Maestro, Ben Bernie, wired the list he selects, as follows:

"Here are my selections for the biggest song hits of 1933: 'Stormy Feather,' 'Lazy Bones,' 'In the Valley of the Moon,' 'Who's Afraid of the Big, Bad Wolf,' and 'Last Roundup.' I am laying three to one you can get six to one from the cigar store girl at the corner. Kindest regards, Ben Bernie."

In a year so replete with song hits as 1933 has been, bandleaders asked for their opinion as to the most popular were confronted with a difficult task. Their selections given here were based upon their own personal opinions and the response of their audiences to their rendition of the respective numbers.

While the compilation given here was designed to include the nation's leading bandsmen, in a few cases names were omitted because due to their being on tour, it was not possible to get in touch with them. However, the expression of opinion is representative, and includes radio bands with aggregate following totalling many millions of listeners.

Guy Lombardo, playing in Boston, sent a list including a couple of numbers Bernie didn't mention. Here is how Guy picks the hits: "Lazy Bones," "Last Roundup," "Stormy Weather," "Annie Doesn't Live Here Any More," and "Did You Ever See a Dream Walking."

Abe Lyman rings in three which neither of the first two listed. Abe's idea of the hits of '33 is: "Last Roundup," "Did You Ever See a Dream Walking," "I'll Be Faithful," "Heat Wave," and "Thanks."

Bandsman George Olsen nominates "Easter Parade." His other choices are "Last Roundup," "Who's Afraid of the Big, Bad Wolf," "Did You Ever See a Dream Walking," "Annie Doesn't Live Here Any More."

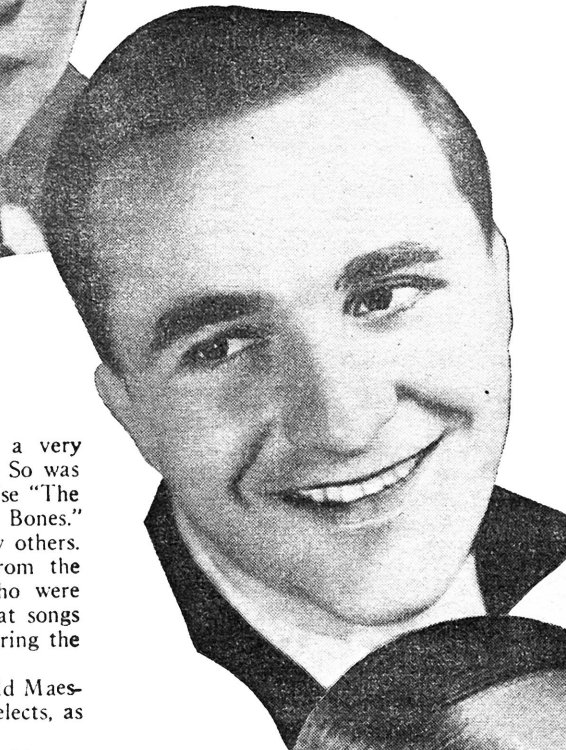
Ted Fiorito lists as one of his five numbers "Shuffle Off to Buffalo," with "Please," "Last Roundup," "Who's Afraid of the Big, Bad Wolf," and "Lazy Bones" his others.

Here is how Phil Harris, who recently left Chicago to go to the St. Regis Hotel in New York, lists them: "Last Roundup," "Mine," "Annie Doesn't Live Here Any More," "Lazy Bones," and "Ah, But Is It Love."

Some other leaders, and the numbers they select, are:

Wayne King: "The Last Roundup" and "Good Night, Little Girl of My Dreams."

Gus Arnheim: "Last Roundup," "Big, Bad Wolf,"



Ben Bernie, the Old Maestro, who rates "Stormy Weather" at the top.

"Did You Ever See a Dream Walking," "Stormy Weather," and "Lazy Bones."

Little Jack Little: "The Big, Bad Wolf," "Last Roundup," "Stormy Weather," "Did You Ever See a Dream Walking," and "Lazy Bones."

Leon Belasco: "Stormy Weather," "Lazy Bones," "Last Roundup," "The Big, Bad Wolf," and "Night and Day."

Clyde McCoy: "Night and Day," "Stormy Weather," "My Darling," "Big, Bad Wolf," and "Did You Ever See a Dream Walking."

Clyde Lucas: "Lazy Bones," "Did You Ever See a Dream Walking," "Last Roundup," and "Big, Bad Wolf."

Carl Moore: "Stormy Weather," "My Darling," "Lazy Bones," "Big, Bad Wolf," and "Last Roundup."

Ace Brigade: "Night and Day," "My Darling," "Lazy Bones," "The Last Roundup," and "Big, Bad Wolf."

Enoch Light: "Last Roundup," "Did You Ever See a Dream Walking," "The Day You Came Along," "By a Waterfall," and "The Old Spinning Wheel."

Below, Ted Fiorito, whose vote goes to "Shuffle Off to Buffalo" as the ace hit of 1933.



Guy Lombardo, whose top choices are "Lazy Bones" and "The Last Roundup."

George Hall: "Stormy Weather," "Lazy Bones," "Last Roundup," "Did You Ever See a Dream Walking," and "Shuffle Off to Buffalo."

Glen Gray: "Stormy Weather," "Last Roundup," "Shuffle Off to Buffalo," "Lazy Bones," and "Blanket of Blue."

Little Jack Little: "Big, Bad Wolf," "Last Roundup," "Stormy Weather," "Did You Ever See a Dream Walking," and "Lazy Bones."

Isham Jones: "Last Roundup," "Blue Prelude," "Lazy Bones," "Smoke Gets in Your Eyes," and "Big, Bad Wolf."

Fred Waring: "Love Is the Sweetest Thing," "Last Roundup," "Stormy Weather," "The Day You Came Along," and "Lazy Bones."

Will Osborne: "Last Roundup," "Did You Ever See a Dream Walking," "Talk of the Town," "Stormy Weather," and "Easter Parade."

Ozzie Nelson: "Last Roundup," "Lazy Bones," "Stormy Weather," "Did You Ever See a Dream Walking," and "Sophisticated Lady."

Glen Gray: "Stormy Weather," "Last Roundup," "Shuffle Off to Buffalo," "Lazy Bones," and "Blanket of Blue."

Jacques Renard: "Last Roundup," "Stormy Weather," "Big, Bad Wolf," "Did You Ever See a Dream Walking," and "Everything I Have Is Yours."

Mark Fisher: "Last Roundup," "Lazy Bones," "Big, Bad Wolf," and "Did You Ever See a Dream Walking."

BOX SCORE of 1933 HITS

SONG	TIMES NAMED
The Last Roundup	20
Lazy Bones	14
Stormy Weather	14
Did You Ever See a Dream Walking	13
Who's Afraid of the Big Bad Wolf	12
Annie Doesn't Live Here Any More	3
Shuffle Off to Buffalo	3
Night and Day	3
My Darling	3
Easter Parade	2
In the Valley of the Moon	1
I'll Be Faithful	1
Heat Wave	1
Thanks	1
Please	1
Mine	1
The Day You Came Along	1
Ah, But Is It Love	1
By a Waterfall	1
The Old Spinning Wheel	1
Talk of the Town	1
Sophisticated Lady	1
Under a Blanket of Blue	1
Everything I Have Is Yours	1

MERRY CHRISTMAS
AND A
HAPPY NEW YEAR

Bob Nolan

Merry Xmas
&
Happy New Year

CLYDE McCOY

Drake Hotel
Chicago
WGN

JOE PARSONS

RADIO'S LOW VOICE

AS 'EDELWEISS JOE'

MONDAY 9:30 P.M.—WMAQ N.B.C.

WED. 9:00 P.M.—WMAQ N.B.C.

SINCLAIR MINSTRELS

Every Mon. 8 P.M. N.B.C. Chicago

SEASON'S GREETINGS

from

LEAH RAY

Merry Christmas

PHIL HARRIS



SEASON'S

GREETINGS

FROM

GEORGE

BURNS

AND

GRACIE

ALLEN



*Best Wishes
to*

RADIO GUIDE

Microphonically

Yours

Rudy Vallee

Best Christmas Wishes to
RADIO GUIDE
 And Its Readers
AL GOODMAN

SEASON'S GREETINGS
GENE ARNOLD
 Writer and Interlocutor
SINCLAIR MINSTRELS
 Writer and Narrator
 Crazy Water Crystals
 Narrator—Carnation Contented How
 NBC Network

SEASON'S GREETINGS
STANLEY PEYTON
 (Dr. Ken Rad in Ken Rad's
 Unsolved Mysteries)
 WLW — the Nation's Station

HOLIDAY GREETINGS
 from
ARTHUR CHANDLER, Jr.
 WLW — the Nation's Station

Best Wishes
LEON BELASCO
 and his
ST. MORITZ
 Orchestra

Compliments
 of the
Season
IRVING MILLS

"The Lonesome Singer
 of the Air"
JOHNNY MARVIN
 Wishes His Listeners
 "Those Good Old Holidays"
 Management: **NBC Artists' Bureau**
 30 Rockefeller Plaza
 New York City
 "Wait for me at the close of the
 long, long day"

"Howja do"
Annette Hanshaw
 Maxwell House Show Boat

Greetings
 from
Anthony Frome
The Poet Prince

MERRY CHRISTMAS
BILLIE ALLEN HOFF
 "The Littlest Girl"
 ON
 N. B. C.

MERRY CHRISTMAS
NEIL SISTERS

SEASON'S GREETINGS
EDNA O'DELL
 "THE HOOSIER SONGBIRD"
 Galaxy of Stars N.B.C.
 Rythm Ramblers N.B.C.
 Rythmic Serenade N.B.C.

MERRY CHRISTMAS
 & A HAPPY NEW YEAR
SHIRLEY HOWARD

holiday greetings
DON BESTOR
 casino bleu
 hotel biltmore
 new york
 nestle nbc
 program network

BIG FREDDY MILLER
 jes' says
 "Merry Xmas,
 Listeners!"
VITEX PROGRAM
 Columbia Network
 Fridays at 11:15 a. m.

My Wish to You
 "Good Health Always"
PATRICK HENRY BARNES
 N B C
 Chicago

Fred Hufsmith
 Extends
SEASON'S GREETINGS

THE MORIN SISTERS
 ON THE
"SEALED POWER SIDE SHOW"
 Every Monday 8:00 P.M. E.S.T. 7:00 P.M. C.S.T

SEASON'S GREETINGS
Conrad Thibault
 NBC CBS

LEE WILEY
 and
VICTOR YOUNG
 AND HIS VANITY FAIR ORCHESTRA
 POND'S program, NBC Red Network Fridays at 9:30 p.m., EST
 PERSONAL MANAGEMENT: JACK KAPP
 AMERICAN BRUNSWICK CO., 1776 BROADWAY, NEW YORK CITY

HARRY HORLICK
 and his Nationally Famed
A. & P. GYPSIES
 Wish You
 The Heartiest of the Season's Greetings
 •
WEAF
 And the N.B.C. Red Network
 Every Monday—9 to 9:30 p.m.

SEASON'S GREETINGS

JOE BRATTAIN

W L W — the Nation's Station

"MAC" McCLOUD*(The Sinclair Minstrel Boy)*

and His

ORCHESTRA*"Das All"***JANE
FROMAN**LINIT
SEVEN-STAR
REVUESundays at 9 p. m., E.S.T.
Columbia Broadcasting SystemStarring in
*"Ziegfeld Follies"*Personal Management:
Morrison-Winkler, Inc.
Park Central Hotel
New York City**COAST TO COAST
W A B C**Tuesday 7:30 P.M.
Friday 5:15—5:30 P.M.*A New Star Rises***DELL
CAMPO
SINGS**Exclusive Management
RALPH WONDERS
Columbia Broadcasting System

ONCE AGAIN it becomes my pleasure to
wish you one and all every joy of the holiday
season.

*Cordially***JACK BENNY
CHEVROLET PROGRAM**

Me, Too—

MARY LIVINGSTON

Merry Christmas
JOAN WINTERS and HARRIETTE WIDMER
"WIDOW and ANGEL"
N.B.C.

**SEASON'S
GREETINGS**

FROM

**ETHEL SHUTTA
AND
GEORGE OLSEN**NOW APPEARING IN THE **MAD**HATTAN ROOM
Hotel Pennsylvania**GEORGE
JESSEL**Management Columbia
Broadcasting System
Personal Management
Robert Milford**DON
ROSS**

BAUME BENGUE PROGRAM

Tuesday, Wednesday and Thursday

Starring in *"Ziegfeld Follies"*Personal Management:
MORRISON-WINKLER, INC.
Park Central Hotel New York CityHello
Everybody

Kate
SmithIS WISHING YOU
A
Merry Christmas
AND A
Happy New Year

Management Ted Collins

MERRY CHRISTMAS
PHIL PORTERFIELD

COURTESY
RED STAR YEAST
"GALAXY OF STARS," Tues., Thurs., 10 A. M., C.S.T.—WMAQ-NBC



SEASON'S GREETINGS

To
RADIO GUIDE and the RADIO PUBLIC
LANNY ROSS

SEASON'S GREETINGS
from
OKLAHOMA BOB ALBRIGHT

W L W—The Nation's Station



GREETINGS OF THE SEASON,

from

ABE LYMAN

AND HIS CALIFORNIANS



HOTEL NEW YORKER

NBC-WEAF Network Friday, 9 P. M., E.S.T., "Waltz Time"

CBS-WABC Network Sundays 2:30 P. M., E.S.T.

MERRY CHRISTMAS
from
"LUXOR'S TALKIE PICTURE TIME"

Produced by Charles P. Hughes
Sunday Afternoon NBC—WEAF

from
June Meredith, Jack Doty, Betty Ryder (the author),
Rosemary Hughes (the vocalist)

Greetings To:

- GEORGE (Stage Mgr.) ALLEN
- TRUMAN (Announcer) BRADLEY
- BROOKSIE
- SANTY (It's In the Bag) CLAUS
- DORING (Dairymaids) SISTERS
- KENN (Yes or No) HINKS
- FRANK (Engineer) FALKNOR
- LARRY (Control) FISK
- PAUL (Artists' Rep.) KAPP
- FRANKLIN (Production)
MACCORMICK
- DICK (Boss) MARVIN
- THE THREE LITTLE
(No Parboiling) PIGS
- ELLERY (Ass't Eng.) PLOTTS
- PREMIUM (King's Jesters) QUARTET
- DON (Continuity) QUINN
- DEWEY (Lights) RAE
- MRS. (Gotta Pencil?) SHAW
- HARRY (On the Down Beat),
SOSNIK AND BOYS
- LOUIS (Sounds) WOHR

*Who Have Had a
Swell Time Presenting*

**OLSEN &
JOHNSON**

In the SWIFT REVUE every
Friday nite at 9:00 C.S.T. on
the Stage of the Civic Theatre
in Chicago. Columbia Network.

"We Thought We'd Dial Laughing!"



MERRY CHRISTMAS

FROM

THE ARMOUR STAR JESTER

PHIL BAKER

CHRISTMAS GREETINGS

FROM

JACK OWENS
SOLOIST

College Inn Program 10:30 A.M. WENR

Merry Christmas—Happy New Year
To All My Radio Friends**Irving Kaufman**

"LAZY DAN"

CBS

Merry Xmas

JEAN PAUL KINGAVAILABLE FOR
SOUND FILMS

38 E. Elm, Chicago SUP 3080

A Sporting Good Holiday
to Everyone**Harry Hartman**

WFBC

Congratulations
and Season's Greetings to
RADIO GUIDE

FROM

George Case

WFBE

JOE EMERSON

"Bachelor of Songs"

Extends the Season's Greetings
to Everyone

WLW

HAPPY GREETINGS

Frank Readick

SEASON'S GREETINGS

to

MY RADIO FRIENDS

EDDIE DUCHIN

And His

Central Park Casino Orchestra

Season's Best Wishes

MARIAN & JIM

(JORDAN)

SMACKOUT—1:45 P.M. E.S.T. Mon.-Tues.-Wed.-Fri.-Sat.—NBC

SATURDAY JAMBOREE—9 P.M. E.S.T. Saturdays—NBC

MR. TWISTER—8 P.M. C.S.T. Fridays—WMAQ

KALTENMEYER'S KINDERGARTEN—6:30 P.M. C.S.T. Saturdays—NBC

PHIL REGANTHE ROMANTIC SINGER
OF ROMANTIC SONGSExtends Heartiest Greetings
To All His Radio Listeners
C.B.S.

Season's Greetings

Joseph Gallicchio

NBC

Christmas Greetings

from the

MILLS BROTHERS

"Four Boys and a Guitar"

NBC — Brunswick Records

Management T. G. Rockwell
ROCKWELL - O'KEEFE, INC.
RKO Bldg. Radio City, N. Y.

GREETINGS

from

BILLY BATCHELOR
WELLINGTON WATTS
AMBROSE J. WEEMS
EDDIE MCGURK

and

RAY KNIGHT

'R' YOU LISTENIN'?

Dear Friends and Enemies:

Another Christmas Day has rolled
around. I honestly hope it will be a
joyous one for you, and that for every
gift you bestow on others, you will re-
ceive a thousand blessings, not only
on this great day, but on every day
throughout the New Year.

I thank you.

TONY WONS

GREETINGS

from

LLOYD SHAFFER

WLW

Christmas Greetings

From

THE KING'S JESTERS

SWIFT REVUE—CBS

SEALED POWER SIDE SHOW—NBC

Thanks to the Good Friends Who Have Made This a Successful Season

SEASON'S GREETINGS

JACK DOTY

TALKIE PICTURE TIME—N.B.C.—4:30 P.M. C.S.T. SUNDAYS

MURIEL WILSON--Extends the Season's Greetings to
RADIO GUIDE and the Radio Public*Season's Greetings*
Harry Hartman

Christmas Greetings

from

Frank Novak
COMPOSER AND DIRECTOR OF
WIZARD of OZ

WEAF

IF YOU LIKE MY SONGS, YOU MAKE ME VERY HAPPY

Wishing You A MERRY CHRISTMAS
*And A HAPPY NEW YEAR Too***TITO GUIZAR**

CBS

SUNDAYS AT 12:30
MIDDAY SERENADEFRIDAYS AND
SATURDAYS AT 7

The Season's Greetings

from

CLARENCE WHEELER

and

EDDIE COPELAND

COLUMBIA BROADCASTING SYSTEM and W B B M

Christmas Greetings

from

"DANGEROUS PARADISE"

ELSIE HITZ and NICK DAWSON

*Merry Christmas***CLARA, LU 'n' EM**

N. B. C.

The Boys and Girls from Radio Station

WLS

and the NATIONAL BARN DANCE

Extend Their Best Wishes for A Merry Christmas

3 LITTLE MAIDS



Eve

UNCLE EZRA



Fat Barrett



Lulu Belle



Fleming Allan



Dixie Mason



Grace Wilson



Joe Kelly



Malcom Claire

CUMBERLAND RIDGE RUNNERS



Evelyn



Slim Miller



Linda Parker



John Lair



Karl Davis



Hartley Taylor



Red Foley



John Brown

TOM AND DON



Lucille



Hal O'Halloran



Arky



Tom



Don



Ole Jonson



Mr. Wiseman



Max Terhune

OLAF

SKYLAND SCOTTY

HOOSIER SOD BUSTERS

THE EMERSONS

HOOSIER HOT SHOTS



Check Stafford



Howard Black



Reg Cross



Ralph Waldo



Elsa Mae



Ken Trietsch



Otto Ward



Paul Trietsch

WINNIE, LOU & SALLY

THE WESTERNERS



Winnie



Lou



Sally



Larry Wellington



Dott Massey



Louise Massey



Allen Massey



Milt Mabie

THE MELODY MEN



Wyn Orr



George Biggar



Arthur Page



Eddie Allan



Phil Kalar



Russel Nelson



Jack Wheelock



Wm. Racherbaumer

GIRLS OF THE GOLDEN WEST



Gene Autry



Georgie Goebel



Rube Tronson



Julian Bentley



Millie Good



Dolly Good



Patsy Montana



Jack Holden

HANK AND HIRAM

MAPLE CITY FOUR

MAC & BOB



Jack Dunnegan



Hiram Higby



Al



Art



Fritz



Pat



Lester McFarland




Robert Gardner

Don Carlos
 Extends
 BEST WISHES FOR
 A MERRY CHRISTMAS
 and a
 HAPPY NEW YEAR

MERRY CHRISTMAS
 and
 HAPPY NEW YEAR
 To All Our Radio Friends
**ADLER
 KELLY
 KERN &
 MANN**
 The Yatch Club Boys

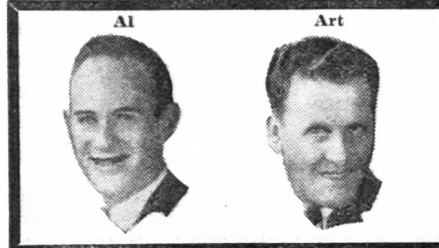
Season's Best Wishes
 from
"GRAND HOTEL"
 Featuring ANNE SEYMOUR
 Don Ameche—Betty Winkler—Arthur Jacobson—Philip Lord
 Eric Sagerquist's Orchestra
 Time: Sunday Afternoons — NBC-WJZ — Coast to Coast Network
CAMPANA SALES COMPANY
(Sponsors)
CAMPANA'S ITALIAN BALM-CAMPANA'S SKIN INVIGORATOR



THE
Season's Greeting
 from
Mrs. Gertrude Berg
 [Molly]
 and
 The Goldberg Family
 ●
 WEAJ — NBC
 7:45 p.m., Monday to Friday



**HELLO
 RADIO
 FRIENDS!**
 WITH THE GREETINGS OF THE SEASON I WISH YOU
 A Very Merry
CHRISTMAS
 and a
 Happy New Year
 Sincerely
FRANK PARKER



MAPLE CITY FOUR

'AL' 'ART' 'FRITZ' 'PAT'

50 Weeks Continuous 6 Days a Week For Crazy Water Crystals WLS 1:30 P.M. C.S.T.
 Sinclair Minstrels 8 P.M. C.S.T. Mondays N.B.C.
 National Farm and Home Hour 11:30 A.M.-12:30 P.M. C.S.T. 3 Days a Week N.B.C.



GREETINGS
JOHN BARKER
 Baritone
 W L W — The Nation's Station

GREETINGS
 from
RALPH KIRBERY
 "The Dream Singer"
 NBC

MERRY
CHRISTMAS
 MARY SMALL

COMPLIMENTS
 of
THE DON HALL TRIO

Seasons Greetings
 To All

Charles Carlisle

Season's Greetings
**IRENE
 TAYLOR**
 "CAMEL CARAVAN"
 WABC-CBS
 Tuesdays, Thursdays at 10 p.m., EST

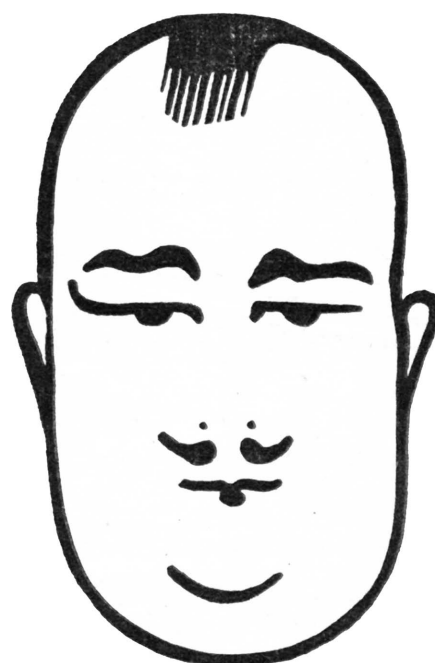
Greetings
CLIFF SOUBIER
 FIRST NIGHTER
 SINCLAIR MINSTRELS
 SEALED POWER SIDE SHOW *N. B. C.*

SEASON'S GREETINGS
WILLIAM STOESS
 Musical Director
 W L W W S A I

GREETINGS FROM
GORDON GRAHAM
 Baritone

KITCHEN KLENZER & AUTOMATIC SOAP FLAKES Send
 Christmas Greetings
 FROM
 THE THREE KINGS..... ADELE STARR
 ALICE BLUE and FREDDIE WITMER
 WMAQ
 Tuesday 9:45 P.M. Mon., Wed. & Fri. 10:45 A.M.
 CST

Christmas Greetings
 from
"The First Nighter"
 (LITTLE THEATRE OFF TIMES SQUARE)
 Featuring CHARLES P. HUGHES, Producer — JUNE
 MEREDITH, DON AMECHE, CLIFFORD SOUBIER
 — ERIC SAGERQUIST'S ORCHESTRA
 Time: Friday Evenings — NBC-WEAF — Coast to Coast Network
 CAMPANA SALES COMPANY
 (Sponsors)
 CAMPANA'S ITALIAN BALM-CAMPANA'S SKIN INVIGORATOR

PAUL

WHITEMAN
 "Dean of Modern Music"
 And His Orchestra
 HEAR
 JACK FULTON-RAMONA
 PEGGY HEALY-ROY BARGY
 RHYTHM BOYS-RHYTHM GIRLS
 BOB LAWRENCE-THE RONDOLIERS

 Broadcasting Weekly
 over NBC Network

 Playing Nightly at
The PARADISE
 RESTAURANT
 New York City

Now let good cheer and contentment abound. Radio Guide, proud of its loyal public, for whom it performs the largest measure of family service of perhaps any publication entering the home, extends to all its readers the heartiest of good wishes for this Christmas season, and the hope that the New Year may be one of good fortune and happiness for them. It takes this occasion also to extend its appreciation to the following artists for their loyal support and cooperation and wishes them continued success in their work as radio entertainers:

BILL BAAR
 THE THREE KINGS
 GENE ARNOLD
 GENE AUTRY
 PHIL BAKER
 PATRICK HENRY BARNES
 BEN BERNIE
 FIRST NIGHTER
 GRAND HOTEL
 DON CARLOS
 CLARA, LU 'n' EM
 EDDIE COPELAND
 JACK DOTY
 MERRY MACS
 JOSEPH GALLICCHIO
 WENDELL HALL
 PHIL HARRIS
 BILLIE ALLEN HOFF
 CHARLES P. HUGHES
 BESS JOHNSON
 MARION AND JIM
 ALICE JOY
 JEAN PAUL KING
 THE KING'S JESTERS
 MAPLE CITY FOUR
 MAC McCLOUD
 CLYDE McCOY
 THE MORIN SISTERS
 NEIL SISTERS
 BOB NOLAN
 EDNA O'DELL
 OLSEN AND JOHNSON
 ORIENTAL GARDENS
 JACK OWENS
 JOE PARSONS
 PHIL PORTERFIELD
 LEAH RAY
 HARRY RICHMAN
 NORM SHERR
 CLIFF SOUBIER
 WARD AND MUZZY
 BOB ALBRIGHT
 JOHN BARKER
 AL and BOB HARVEY
 UNCLE BOB WILSON
 TAYLOR AND BATE, LTD.
 CLARENCE WHEELER
 DAN RUSSO
 CHARLES STANTON LUCAS
 VIC. SADE AND RUSH

ROBERT BENTLEY
 JOE BRATTAIN
 GEO. CASE
 ARTHUR CHANDLER, JR.
 JOE EMERSON
 HARRY HARTMAN
 ED McCONNELL
 STANLEY PEYTON
 LLOYD SHAFFER
 WM. C. STOESS
 BOB TRENDLER
 PAUL WHITEMAN
 GEORGE BEATTY
 LEON BELASCO
 JACK BENNY
 MRS. GERTRUDE BERG
 TEDDY BERGMAN
 GEORGE BURNS AND
 GRACIE ALLEN
 ELSIE HITZ AND
 NICK DAWSON
 DELL CAMPO
 CHARLES CARLISLE
 JESSICA DRAGONETTE
 EDDY DUCHIN
 PHIL DUEY
 JANE FROMAN
 ANTHONY FROME
 AL GOODMAN
 GORDON GRAHAM
 TITO GUIZAR
 DON HALL TRIO
 ANNETTE HANSHAW
 HARRY HORLICK
 SHIRLEY HOWARD
 FRED HUFSMITH
 GEORGE JESSEL
 ISHAM JONES
 IRVING KAUFMAN
 RALPH KERBERY
 RAYMOND KNIGHT
 ABE LYMAN
 JOHNNY MARVIN
 BIG FREDDY MILLER
 IRVING MILLS
 JOAN WINTERS
 JIMMIE DEW
 WALTER DOWNS
 LYRIC TRIO LYRIQUE
 FERDE MOWRY

RADIO STATION CFRB
 ANLON YOUNG
 BILLY BISSETT
 PERCY FAITH
 EDDIE HOUSE
 FRANK NOVAK
 GEORGE OLSEN
 FRANK PARKER
 JACK PEARL
 FRAND READICK
 PHIL REGAN
 REIS AND DUNN
 MILLS BROTHERS
 DON ROSS
 LANNY ROSS
 DAVE RUBINOFF
 MARY SMALL
 TAMARA
 IRENE TAYLOR
 CONRAD THIBAUT
 RUDY VALLEE
 VERA VAN
 MARK WARNOW
 LEE WILEY AND
 VICTOR YOUNG
 MURIEL WILSON
 TONY WONS
 YACHT CLUB BOYS
 ALAN COURTNEY
 ARLENE JACKSON
 CHARLES MARTIN
 SIGMUND SPAETH
 TONY CABOOCH
 VIRGINIA CLARK
 TONY D'ORAZI
 MURRAY FORBES
 MRS. AND MRS. ALBERT
 HOOFINGHAM
 HOMER GRIFFITH
 HARVEY HAYS
 SUE ROBERTS
 LOG CABIN BOYS
 MONA VAN
 RADIO STATION WAAF
 BOB WHITE PRODUCTIONS
 CHARLES WHITE
 THE ARTISTS OF
 RADIO STATION WLS
 HARRIETTE WIDMER

Keep Radio Guide by the dial—it's the key to each day's entertainment

RADIO LOG OF NORTH AMERICAN STATIONS

(Continued)

(Continued from Page 13-A)

Station	Location	Watts	Kc.	Station	Location	Watts	Kc.	Station	Location	Watts	Kc.	Station	Location	Watts	Kc.
WQAN	Scranton, Pa.	250	880	CFCN	Strathmore, Alta.	10000	1030	CKCR	Waterloo, Ont.	100	1510	XEFA	Mexico, D. F.	500	1250
WQAO-WPAP	New York, N. Y.			CFCO	Chatham, Ont.	50	600	CKCV	Quebec, Que.	50	1310	XEFB	Monterrey, N. L.	100	1315
WQBC	Vicksburg, Miss.	500	1360	WSPA	Spartansburg, S. C.	100	1420	CKFB	Vancouver, B. C.	50	1410	XEFD	Tia Juana, B. C.	300	855
WQDM	St. Albans, Vt.	100	1370	WSPD	Toledo, Ohio	1000	1340	CKGB	Timmins, Ont.	100	1420	XEFE	Nuevo Laredo, Tamps.	100	1000
WQDX	Thomasville, Ga.	100	1210	WSUI	Iowa City, Iowa	500	880	CKIC	Wolfville, N. S.	50	1010	XEFI	Chihuahua, Chih.	250	1000
WRAK	WilliamSPORT, Pa.	100	1370	WSUN-WFLA	See WFLA-WSUN			CKMC	Cobalt, Ont.	50	1210	XEFJ	Monterrey, N. L.	100	1000
WRAM	Wilmington, N. C.	100	1370	WSYB	Buffalo, N. Y.	50	1370	CKMO	Vancouver, B. C.	100	1410	XEFK	Queretero, Qro.	40	1000
WRAW	Reading, Pa.	100	1310	WSYR	Rutland, Vt.	100	1500	CKNC	Toronto, Ont.	100	1030	XEFV	Chihuahua, Chih.	100	1370
WRAX	Philadelphia, Pa.	250	920	WTAD	Quincy, Ill.	250	570	CKOC	Hamilton, Ont.	500	1120	XEFW	Tampico, Tamps.	70	1280
WRBL	Columbus, Ga.	100	1200	WTAG	Worcester, Mass.	250	580	CKOV	Kelowna, B. C.	50	1210	XEG	Mexico, D. F.	500	1075
WRBX	Roanoke, Va.	250	1410	WTAM	Cleveland, O.	50000	1070	CKPR	Port Arthur, Ont.	50	780	XEH	Monterrey, N. L.	250	1132
WRD	Washington, D. C.	500	950	WTAQ	Eau Claire, Wis.	1000	1330	CKLW	Windsor, Ont.	5000	840	XEI	Morelia, Mich.	125	550
WRDO	Augusta, Me.	100	1370	WTAR	Norfolk, Va.	500	780	CKPC	Brantford, Ont.	100	930	XEJ	Ciudad Juarez, Chih.	500	1000
WRDW	Augusta, Ga.	100	1500	WTAW	College Station, Texas	500	1120	CKQA	Edmonton, Alta.	100	930	XEL	Saltflo, Coah.	10	1000
WRDZ	Memphis, Tenn.	500	600	WTAX	Springfield, Ill.	100	1210	CKRM	LaPrairie, Que.	5000	910	XEQ	Mexico, D. F.	500	1330
WREN	Lawrence, Kans.	1000	1220	WTBO	Cumberland, Md.	100	1420	CRCM	LaPrairie, Que.	5000	910	XEK	Mexico, D. F.	100	990
WRHM	Minneapolis, Minn.	1000	1250	WTEL	Philadelphia, Pa.	100	1310	CRCO	Ottawa, Ont.	1000	880	XEN	Mexico, D. F.	1000	711
WRJN	Racine, Wis.	100	1370	WTFF	Athens, Ga.	500	1450	CRCS	Chicoutimi, Que.	100	1500	XEP	Nuevo Laredo, Tamps.	500	780
WRNY	New York, N. Y.	250	1010	WTIC	Hartford, Conn.	50000	1060	CRCT	Toronto, Ont.	5000	960	XEPN	Piedras Negras, Coah.	60000	585
WROL	Knoxville, Tenn.	100	1310	WTJS	Jackson, Tenn.	100	1310	CRCV	Lulu Island, B. C.	1000	1100	XER	Villa Acuna, Coah.	500000	735
WRR	Dallas, Texas	500	1280	WTMJ	Milwaukee, Wis.	1000	620	XEA	Guadalajara, Guad.	125	1000	XES	Tampico, Tamps.	250	1020
WRUF	Gainesville, Fla.	5000	830	WTNJ	Trenton, N. J.	500	1280	XEAN	Ciudad Juarez, Chih.	5000	750	XET	Monterrey, N. L.	500	690
WRVA	Richmond, Va.	5000	1110	WTOC	Savannah, Ga.	500	1260	XEB	Nuevo Laredo, Tamps.	7500	1450	XETA	Mexico, D. F.	250	1100
WSAI	Cincinnati, O.	500	1330	WTRC	Elkhart, Ind.	100	1310	XEAC	San Luis Potosi, S. L. P.	100	1295	XETB	Torreón, Coah.	125	1380
WSAJ	Grove City, Pa.	100	1310	WWAE	Hammond, Ind.	100	1200	XEAD	Mexico City	250	875	XETH	Puebla, Puebla	100	840
WSAN	Allentown, Pa.	250	1440	WWJ	Detroit, Mich.	1000	920	XEAF	Mexico City	50	1000	XETU	Mexico, D. F.	1000	610
WSAR	Fall River, Mass.	250	1450	WWL	New Orleans, La.	10000	850	XEAG	Mexicali	7500	560	XETV	Mexico, D. F.	500	830
WSAZ	Huntington, W. Va.	500	1190	WWNC	Asheville, N. C.	1000	570	XEAI	Mexico City	100	1090	XEU	Vera Cruz, V. C.	100	1010
WSB	Atlanta, Ga.	50000	740	WWRL	Woodside, N. Y.	100	1500	XEAO	Mexicali	7500	560	XEY	Merida, Yuc.	10	547
WSBC	Chicago, Ill.	100	1210	WWSW	Pittsburgh, Pa.	100	1500	XEAW	Reynosa, Tamps.	10000	965	XEW	Mexico, D. F.	5000	910
WSBT	South Bend, Ind.	500	1230	WWVA	Wheeling, W. Va.	5000	1160	XEAX	Merida, Yuc.	1000	1030	XEX	Mexico, D. F.	500	1210
WSEN	Columbus, Ohio	100	1210	WXYZ	Detroit, Mich.	1000	1240	XEB	Mexico, D. F.	1000	1030	XEZ	Merida, Yuc.	500	630
WSFA	Montgomery, Ala.	500	1410	Canada				XEAW	Reynosa, Tamps.	10000	965	XFC	Aguascalientes, Ags.	350	805
WSIX	Springfield, Tenn.	100	1210	Station Location	Watts	Kc.		XEB	Mexico, D. F.	1000	1030	XFG	Mexico, D. F.	2000	638
WSJS	Finston-Salem, N. C.	100	1310	CFAC	Calgary, Alta.	100	930	XED	Toluca, Mex.	50	1000	XFH	Mexico, D. F.	250	...
WSM	Nashville, Tenn.	50000	650	CFBO	St. John, N. B.	100	1210	XEF	Guadalajara, Guad.	500	1155	XFI	Mexico, D. F.	1000	818
WSMB	New Orleans, La.	500	1320	CFCF	Montreal, Que.	500	600	XEFC	Villa Acuna, Coah.	500000	665	XFO-XEFO	Mexico, D. F.	5000	940
				CFCH	North Bay, Ont.	100	930					XFX	Mexico, D. F.	500	860

Mexico

Canada

Station	Location	Watts	Kc.
CFAC	Calgary, Alta.	100	930
CFBO	St. John, N. B.	100	1210
CFCF	Montreal, Que.	500	600
CFCH	North Bay, Ont.	100	930

"Here We Are"
LES ARTIE
REIS & DUNN
THE WANDERING MINSTRELS
OF C.B.S.
EXTENDS SEASON'S GREETINGS



JESSICA DRAGONETTE
WEAF-NBC

Miss Dragonette is now in her eighth year before the NBC microphone appearing every Friday evening over a WEAF network at 8 p.m., EST

THREE

Kresup

MOODS

Marion

IN BLUE

Flora

Bob Trendler

Accompanist-Arranger WLW

SOWDY HOKES—I MEAN HOWDY
SOAKS—I MEAN

MERRY CHRISTMAS

AND

HAPPY NEW YEAR

To You & You & You

Teddy "Blubber" Bergman

CHRISTMAS GREETINGS

From

GEORGE BEATTY

AND

the inmates of that very unusual hotel... The Broken Arms.

*Merry Christmas
Happy New Year*



SEASON'S GREETINGS

Spontaneously come from the bottom of my heart and extend to each of you, my Friends of the Air.

Sincerely,

TAMARA

CORDIALLY

ALICE JOY

N.B.C.
CHICAGO

"Radio's Dream Girl"

Cheri McKay SEASON'S GREETINGS McMichael Brothers

THE MERRY MACS

Eddie Freckmann-Accompanist-Arranger N.B.C. Climaine Program

GREETINGS

WENDELL HALL

"THE RED-HEADED MUSIC MAKER"

*Heartiest Season's Greetings
from*

BESS JOHNSON

*A Glad Noel and a New Year of Happiness
from*

BILL BAAR

"THE MAN OF MANY VOICES"

"Grandpa Burton"

Every Day Except Saturday and Sunday
4:45 P. M., C.S.T., WJZ-NBC Network
Chicago Outlet WENR

*The Old Maestro and all the lads
wish all youse guys and gals the
best of everything.*

Ben Bernie

SEASON'S GREETINGS
from

JACK PEARL

the Modern "Baron Munchausen"

and

CLIFF (SHARLIE) HALL

LUCKY STRIKE PROGRAM — SATURDAY NIGHTS

TO each and every Silver-Haired Mother and Daddy; To all my Friends,
Young and Old, and not forgetting

RADIO GUIDE

I'M A-WISHING YOU-ALL A

Merry Christmas

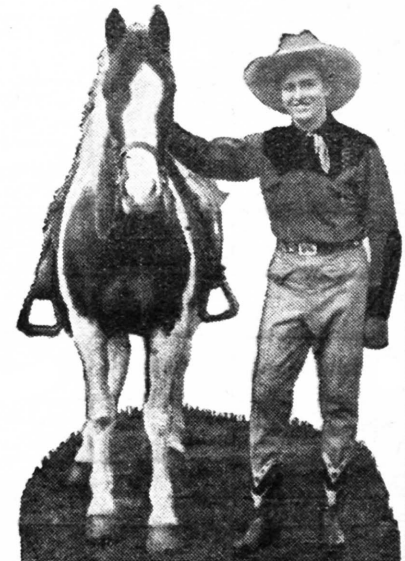
AND A

Happier New Year

THAT'S IT!

OKLAHOMA'S YODELING COWBOY OF WLS
J. L. Frank, Personal Representative — 518 State-Lake Bldg., Chicago

GENE AUTRY



1934 RADIO GUIDE CALENDAR OF STARS' BIRTHDAYS

	Jan.	Feb.	Mar.	April	May	June	July	Aug.	Sept.	Oct.	Nov.	Dec.
1	Nat Shilkret		Kathryn Field Charles Lyon		Howard Barlow	Hugo Marianna	Irna Phillips (Mother Moran)		Wm. N. Daly			Jean Paul King
2	Bern. Flynn Lee Montgomery	Veronica Wiggins			Bing Crosby	Frank Arnold Ben F. Grauer Walter Tedley			Fred Von Ammon	Roy Shield Martha Attwood	W. Haenschen Mary Steele Grantland Rice	Jesse Crawford
3	Freddie Rich	C. J. Correll (Andy)		George Jessel				Irma Glenn John S. Young	Dave Rubinoff	'Lu' Carrothers Gertrude Berg Vincent Sorey	Bub Pickard	Connie Boswell Kathleen Stewart
4	Patrick Kelly		Lucy Gillman	Ted McMichael		Erno Rapee	Adelaide Klein Julia Mahoney	Carson Robison			Jack Landt	
5	Fred Huffsmith		Chick Johnson		Freeman F. Gosden (Amos)				Harold Sanford			Archer Gibson
6	Helen Nugent Dick Teala	Joseph Rogers	Rosario Bourdon	Keith McLeod Lowell Thomas	David Elman	Tony Cabooch		Tony Parenti	Paul Tremaine	Chas. Pearson	Ole Olsen Frank Readick (The Shadow)	John Ravencroft
7			Edward Jewett	Chas. Carlile Walter Winchell		Alois Havrilla			Edwin K. Cohan	Ann Pickard		Bob Brown Lon McAdams
8		Truman Bradley Don Ball		Lulu McConnell Tito Guizar		Dana Noyes	Fritz Clark Gertrude Niesen	Nino Martini J. Mattfield Edna O'Dell	Milton Watson			
9	Crane Calder Marion Carley	Walter Preston		Oliver Smith	William Adams	Paul White	Martha Boswell H. V. Kaltenborn		Billy Dauscha	Robert Armbruster Art Jacobson	Ed Wynn	
10	Harold Stokes		Carol Deis Peter de Rose	Thomas Breen Elliot Shaw		Mario Bragotti	Graham McNamee Noble Sissle		Emery Deutsch	Johnny Green Chas. Pickard	Ray M'Dermott	
11		Ben Alley Harry Swan	Andy Sanella	Pat Flanagan			Harry Von Zell	Karl Landt	Anne Seymour		Henry Brown Henry Shope	
12	Smilin' Ed McConnell	Ray Knight Curt Petersen Tom Waring	Loretta Poynton				Harold R. Peat Ray Winters	Leonard Joy Frank Ross		Jane Ace Theodore Webb	Pat Patterson	
13	Irving Morrow	Lennie Hayton	Aileen Clark Helen King Louis Roen	Evan Evans			Phillips Lord (Seth Parker)	Olga Albani Baby Rose Marie				Phil Mayer
14	Russ Columbo	Jack Benny Jessica Dragonette	Gene Arnold	Robert Moody		Marcella Shields	Gene Rouse	John Holbrook		Dan Russo F. C. Taylor (Stoopnagle)	Morton Downey Wilbur Hulick (Budd)	
15	Goodman Ace	John Seagle	Everett Mitchell	Marion Jordan Phil Porterfield		Jacques Renard	Howard Lanin	Virginia Arnold Edward Davies Albert Spalding	James Wallington	Don Bigelow Muriel Harbater Josef Koestner		
16	Babs Ryan	Mildred Bailey Leah Ray	Elizabeth Lennox	Milton Cross Betty Barthell	Wm. Kephart Norman Ross	Al Llewelyn	Floyd Gibbons Fred Singiser				Jim Jordan Ma Pickard Louise Starkey	
17				Howard Clancy		Chas. Howard		George Howard	Mary Charles	Roger Kinne Jack Owens	Toscha Siedel	
18		Jacques Frey			Raymond Page Lew White		Adele Ronson	Walter O'Keefe				Dr. S. Parkes Cadman
19	Lanny Ross			Sylvia Froos Benny Meroff Betty Winkler	Barbara Maurel	Charlotte Harriman Ed Thorgenson	Walter Wicker	John Fogarty	Willard Robison			
20	George Burns Norman Cordon Al Rice	Burt McMurtrie Vera Van		Wilfred Glenn	Vet Boswell		Harry Horlick Lucille Neil	Andre Baruch Edgar A. Guest		Leo O'Rourke	Art James	Cheri McKay
21	Muriel Pollock Carveth Wells							Bob Haring Billy Idelson				Bea Churchill Andre Kostelanetz
22	James Melton Vivien Ruth	Bess Johnson Kenneth Roberts	Earl Palmer		H. Ward Wilson	Phil Duey	Dad Pickard	Wm. Brenton	Joe Parsons	F. A. Mitchell- Hedges	Howard Petrie	Deems Taylor
23	Edward Harris Earl Waldo			Edwin C. Hill	Freddy Miller Maurine Ward C'lyle Stevens	Irvin S. Cobb Claude Reese Marley Sherris	Gwyneth Neil	Art Van Harvey Ray Perkins Wendell Hall		Ford Bond		Don McNeill
24		Theo Alban Ruth Pickard Pauline Morin				Francis Bastow Phil Harris		Phil Baker Louis Dean Ralph Kirbery	Charel de Thomee		Vee Lawnhurst Irene Wicker	
25						Cliff Soubier			Robt. Simmons	W. Butterworth Don Landt Cyril Pitts	Chas. F. Coe Will Osborne Wm. Steinke	Marion Hopkinson Tony Wons
26		Maxmillian Pilzer		Holland Engle Marjorie Morin		Bob Nolan	Gracie Allen	George Hicks	Vaughn de Leath	Pat Barnes Alice Joy		
27		Frank Muna			Evelyn Morin		Mabel Albertson		Phil Cook Billy A. Hoff		Gladys Rice Mary Liv'gst'n Ted Husing	
28	Irene Beasley	Harold Parkes		Paul Whiteman	Al Jolson Phil Regan	Kelvin Keech Ann Leaf Chas. Tremont	Hal Totten Fred Uttal	John Corrigliano Artells Dickson	Boake Carter		Wm. Lundell Lowell Patton Frank Black	
29	Florence Muzzy			Harry McNaughton Frank Parker		William Werges Muriel Wilson	Lewis James	Mabel Jackson Julius Seebach	Gene Autry	Virginia Clark Geo. Dilworth Jack Pearl	Florence Lake	Clyde McCoy
30	Dr. Damrosch Joseph Gallicchio				Whispering Jack Smith Ben Bernie	Phillips Carlin	Theo Karle		Nat Brusiloff		Frederic William Wile	
31	Eddie Cantor				Frances Alda	John Mayo	Ann Neil Howard White			Neal Ensley Mary McCoy		Bradford Browne

The Big Show 9:30 P.M. CBS

(MONDAY CONTINUED)

NIGHT

6:00 P.M.
NBC—Xavier Cugat's Orchestra: WEAFF
CBS—Buck Rogers in the 25th Century: WABC
WOKO WAAB WDRC WCAU WJAS
NBC—U. S. Army Band: WJZ WBAL
KDKA—News-Reeler, Pat Heeley
WBZ-WBZA—Camera Club, Luis Marden
WCSH—Dance Marathon
WGY—Evening Brevities
WLW—Jack Armstrong, sketch
WEEI—The Evening Tattler
WNAC—Temperature; Weather; News
WOR—Uncle Don

6:15 P.M.
CBS—Bobby Benson and Sunny Jim: WABC
WOKO WAAB WDRC WCAU
KDKA—Sports; Program Preview
WBZ-WBZA—United States Army Band (NBC)
WCSH—Al Buck's Sport Revue
WGY—Joe and Eddy, comedy duo
WLW—Joe Emerson, songs; orchestra
WNAC—Jacques Fischer's Orchestra
WRVA—Smoky and Poky, sketch

6:30 P.M.
NBC—Irene Beasley, songs: WEAFF WTIC WFI
WCSH
CBS—Vera Van, contralto: WABC WOKO WAAB
WDRC WCAU
NBC—Three X Sisters, harmony trio: WJZ
WBAL
KDKA—Evensong
WBZ-WBZA—Old Farmers Almanac; Weather;
 Sports
WGY—Cowboy Band
WLW—Bob Newhall, Mail Pouch Sports Man
WNAC—Detectives Black and Blue, sketch
WEEI—News Flashes; Farm Flashes
WOR—Don Bestor's Orchestra
WRVA—News Reporter

6:45 P.M.
CBS—Enoch Light's Orchestra: WOKO WAAB
WDRC
NBC—Horse Sense Philosophy, Andrew Kelly:
 WEAFF WCSH
CBS—Music Box; Enzo Aita, tenor: WABC
 WCAU
NBC—Lowell Thomas; Today's News: WJZ
WBZ WBZA WBAL KDKA WLW
WGY—Red Davis, sketch
WEEI—Twilight Hour
WNAC—"Your Investments" by Laurence S.
 Winchester
WRVA—Red Davis, sketch

7:00 P.M.
NBC—Shirley Howard, vocalist; the Jesters; Milt
 Rettenberg, piano; Tony Callucci, guitar:
 WEAFF WTIC WEEI WGY WLIT WCSH
CBS—Myrt and Marge, drama: WABC WOKO
 WNAC WDRC WCAU WJAS
NBC—Amos 'n' Andy: WJZ WBAL WBZ WBZA
 WLW WRVA KDKA
WOR—Ford Frick, sports resume

7:15 P.M.
NBC—Billy Batchelor, dramatic sketch: WEAFF
 WGY WCSH
CBS—Just Plain Bill, skit: WABC, WNAC
 WCAU WJAS
NBC—Baby Rose Marie, songs: WJZ WBZ
 WBZA KDKA WBAL
WEEI—After Dinner Revue
WLW—Detectives Black and Blue, sketch
WOR—Gabriel Heatter, news commentator
WRVA—Quartet

7:30 P.M.
NBC—Lum and Abner, comedy team: WEAFF
 WGY WLW WEEI WCSH
CBS—Music on the Air; Guest Star: WABC
 WOKO WNAC WDRC WCAU WJAS
NBC—Potash and Perlmutter, humorous sketch:
 WJZ WBAL WBZ WBZA KDKA
WOR—"Terry and Ted", adventure story; Don
 Carney, narrator
WRVA—Contract Bridge

7:45 P.M.
NBC—The Goldbergs, comedy sketch: WEAFF
 WEEI WCSH WLIT WGY
CBS—Boake Carter, News: WABC WNAC WCAU
 WJAS
NBC—Mme. Frances Alda, soprano: WJZ WBAL
 KDKA WBZ WBZA
WLW—Red Davis, sketch
WOR—Lee Cronican, Piano Concerto
WRVA—Tarzan of the Apes, sketch

8:00 P.M.
NBC—Dramatic Sketch: WEAFF WTIC WEEI
 WCSH WGY
CBS—Phil Ducey, Frank Luther and Jack Parker,
 with Vivian Ruth: WABC WNAC WDRC
NBC—Side Show; Cliff Soubier, barker; vocal
 trio; Harold Stokes' Orchestra: WJZ WBAL
 WBZ WBZA KDKA
WCAU—Blanche Calloway's Orchestra
WLW—Three Moods in Blue; Franklin Bens; or-
 chestra
WOR—"Detectives Black and Blue," Mystery
 Drama
WRVA—Piano Concerto

8:15 P.M.
CBS—Edwin C. Hill, The Human Side of the
 News: WABC WOKO WNAC WCAU WDRC
WJAS
WLW—Side Show; Cliff Soubier; Vocalists (NBC)

GAGS and BONERS

Gags and Boners submitted for this column must be identified by the call letters of the station, and the time. Unless this information is given, entries cannot be considered.

December 12, KYW; 10:20 p. m.—
 Announcer: "Please make your reservations early for the New Year's Eve party. The charge is only six dollars a plate. The next number on our program will be: 'What More Can I Ask.'"—Harry F. Spalding, Chicago, Ill.

December 13, WLS; 11:55 a. m.—
 Julian Bentley: "The latest is that in the anarchist revolt in Spain, one hundred have been killed, but this number is expected to rise."—Jones Earl Corwin, Fulton, Ill.

December 5, WLS; 7:42 p. m.—
 Dr. Bundesen: "Of course, this disease will return to one who has had it more easily than to one who has not."—Mrs. Jean P. Conner, Wyandot, Del.

December 8, WENR; 8:45 p. m.—

November 29, WISN; 3:00 p. m.—
 Announcer: "Be sure you send your name in before you forget it."—Miss Vivian Perry, Stockton, Ill.

November 29, WORK; 1:33 p. m.—
 Announcer: "And now we leave the air for one hour. We do our part."—Joanne Fournier, Milwaukee, Wis.

December 2, WMAQ; 10:15 p. m.—
 Announcer: "We put in gas heat at your own risk."—L. R. Miller, Poteau, Okla.

December 6, WBBM; 8:28 p. m.—
 Announcer: "Be sure you send your name in before you forget it."—Miss Vivian Perry, Stockton, Ill.

December 12, KOA; 9:05 p. m.—
 Andy: "The cow stuck his horn through the door."—Patrick De Vany, Denver, Col.

December 13, WLS; 11:55 a. m.—
 Julian Bentley: "The latest is that in the anarchist revolt in Spain, one hundred have been killed, but this number is expected to rise."—Jones Earl Corwin, Fulton, Ill.

December 5, WLS; 7:42 p. m.—
 Dr. Bundesen: "Of course, this disease will return to one who has had it more easily than to one who has not."—Mrs. Jean P. Conner, Wyandot, Del.

December 8, WENR; 8:45 p. m.—

November 29, WISN; 3:00 p. m.—
 Announcer: "Be sure you send your name in before you forget it."—Miss Vivian Perry, Stockton, Ill.

November 29, WORK; 1:33 p. m.—
 Announcer: "And now we leave the air for one hour. We do our part."—Joanne Fournier, Milwaukee, Wis.

December 2, WMAQ; 10:15 p. m.—
 Announcer: "We put in gas heat at your own risk."—L. R. Miller, Poteau, Okla.

December 6, WBBM; 8:28 p. m.—
 Announcer: "Be sure you send your name in before you forget it."—Miss Vivian Perry, Stockton, Ill.

December 12, KOA; 9:05 p. m.—
 Andy: "The cow stuck his horn through the door."—Patrick De Vany, Denver, Col.

December 13, WLS; 11:55 a. m.—
 Julian Bentley: "The latest is that in the anarchist revolt in Spain, one hundred have been killed, but this number is expected to rise."—Jones Earl Corwin, Fulton, Ill.

December 5, WLS; 7:42 p. m.—
 Dr. Bundesen: "Of course, this disease will return to one who has had it more easily than to one who has not."—Mrs. Jean P. Conner, Wyandot, Del.

December 8, WENR; 8:45 p. m.—

November 29, WISN; 3:00 p. m.—
 Announcer: "Be sure you send your name in before you forget it."—Miss Vivian Perry, Stockton, Ill.

November 29, WORK; 1:33 p. m.—
 Announcer: "And now we leave the air for one hour. We do our part."—Joanne Fournier, Milwaukee, Wis.

December 2, WMAQ; 10:15 p. m.—
 Announcer: "We put in gas heat at your own risk."—L. R. Miller, Poteau, Okla.

December 6, WBBM; 8:28 p. m.—
 Announcer: "Be sure you send your name in before you forget it."—Miss Vivian Perry, Stockton, Ill.

December 12, KOA; 9:05 p. m.—
 Andy: "The cow stuck his horn through the door."—Patrick De Vany, Denver, Col.

December 13, WLS; 11:55 a. m.—
 Julian Bentley: "The latest is that in the anarchist revolt in Spain, one hundred have been killed, but this number is expected to rise."—Jones Earl Corwin, Fulton, Ill.

December 5, WLS; 7:42 p. m.—
 Dr. Bundesen: "Of course, this disease will return to one who has had it more easily than to one who has not."—Mrs. Jean P. Conner, Wyandot, Del.

December 8, WENR; 8:45 p. m.—

November 29, WISN; 3:00 p. m.—
 Announcer: "Be sure you send your name in before you forget it."—Miss Vivian Perry, Stockton, Ill.

November 29, WORK; 1:33 p. m.—
 Announcer: "And now we leave the air for one hour. We do our part."—Joanne Fournier, Milwaukee, Wis.

December 2, WMAQ; 10:15 p. m.—
 Announcer: "We put in gas heat at your own risk."—L. R. Miller, Poteau, Okla.

One dollar will be paid for each gag or boner published

Mr. Johnson, vice-president of Armour & Co., introducing Governor Schmedeman of Wisconsin: "Next week being National Cheese Week, I take great pleasure in introducing Governor Schmedeman."—Melvin Golden, Chicago, Ill.

"THE BIG SHOW"

MONDAYS 9:30 C.B.S. CST

For Stations see Radio Guide Listings
EX-LAX—THE CHOCOLATE LAXATIVE

BEGINNING
DEC. 16

COL. STOOPNAGLE
AND BUDD

BACK AGAIN ON THE AIR
FOR PONTIAC

in a brand new
RADIO PROGRAM
COLUMBIA NETWORK
61 Stations—9:15 p.m. E. S. T.
Every WEDNESDAY & SATURDAY

YOUR HANDWRITING

Your handwriting is a picture of your present capacity and those unused abilities and talents that could be developed for immediate success. Find out about yourself—have your character and personality analyzed. Special offer to readers of Radio Guide: Write a personal letter to deBerri Tennent, enclosing One Dollar (regular price Five Dollars) for a confidential analysis.

M. de Berri Tennent
507 Fifth Avenue New York City

MICROPHONE TRAINING JOHN CAMPON

Specialist of
the Radio Singing Voice
FREE AUDITIONS
by appointment only

Voices are analysed as to their individuality and possibilities for Radio Singing.

156 W. 72nd St., N. Y. C. SU 7-0197

NEW!

The
SCIENTIFIC AERIAL

With the Dual Connection

\$1.00

Complete Postpaid

NO OSCILLATING OR WHISTLING

This DUAL type aerial uses a new scientific principle which completely eliminates this annoyance as commonly experienced on inside aerials. It also eliminates lightning hazards, unsightly poles, guy wires, etc. Enables the radio to be readily moved when desired. A complete aerial in itself—nothing extra to buy.

Try One 5 Days at Our Risk — More Distance and Volume

Enclosed find \$1.00 for Scientific Aerial prepaid. If not pleased will return after 5 day trial for refund.

Check here if desired sent P.P.C. O. D. \$1.00 plus few cents postage.

Name

Address

City State

Not an experiment but fully tested. Many users report over 3,000 mile reception. Gives triple the volume over regular inside aerials on many sets. Guaranteed for 5 years. Distributors and dealers write for sales proposition.

National Laboratories

Dept. D., Fargo, N. Dak.

Tuesday, Dec. 26

Ben Bernie 9:00 P.M. NBC

Ed Wynn 9:30 P.M. NBC

MORNING

8:00 A.M. NBC—Radio City Organ; Richard Leibert, organist: WFAF WFI WGY WWSH... CBS—Salon Musicale; Vincent Sorey, Conductor: WABC WCAU... 9:00 A.M. NBC—Ted Black's Orchestra: WFAF WGY WLIT WWSH... 10:00 A.M. NBC—Breen and de Rose, songs and ukulele: WFAF WFI WWSH WGY...

AFTERNOON

12:00 Noon NBC—Pollock and Lawnhurst, piano team: WFAF WTIC WEEI WWSH... 12:15 P.M. CBS—Connie Gates, Songs: WABC WNAC WDRC WCAU WOKO... 12:30 P.M. NBC—Maurice Lees' Concert Ensemble: WFAF CBS—News Flashes: WABC WOKO WNAC... 1:00 P.M. CBS—Marie, the Little French Princess, drama: WABC WNAC WCAU... 1:15 P.M. CBS—Reis and Dunn, Comedy and Songs: WABC WOKO WNAC WDRC... 2:00 P.M. NBC—Merry Madcaps; Fred Wade, tenor; Norman Clouter's Orchestra: WFAF WTIC WEEI WLIT...

NBC—Smack Out, comedy sketch: WJZ WBAL WBZ WBZA... KDKA—Home Forum WCAU—Women's Club of the Air WWSH—Food Hour... 3:00 P.M. NBC—Ma Perkins, drama: WFAF WWSH WGY WFI CBS—Metropolitan Parade: WABC WOKO WNAC WDRC WJAS... 3:15 P.M. NBC—Blue Room Echoes, string ensemble: WFAF WFI WWSH... 3:30 P.M. NBC—Woman's Radio Review; Claudine MacDonald; orchestra: WFAF WFI WGY WWSH... 4:00 P.M. NBC—Zita Poema, Tango Orchestra: WFAF CBS—U. S. Navy Band: WABC WOKO WNAC... 4:30 P.M. NBC—Jack and Loretta Clemens, songs and guitar: WFAF WGY WEEI... 5:00 P.M. NBC—On The Air Tonight: WABC NBC—America Going Forward, speaker: WJZ CBS—Phil Regan, tenor: WAAB WDRC WJAS... 5:30 P.M. NBC—Adventures of Dr. Dolittle, dramatic sketch: WFAF WEEI WWSH... 5:30 P.M. CBS—Jack Armstrong, All American Boy: WABC WOKO WNAC WDRC WCAU WJAS...

NBC—Singing Lady, children's sketch: WJZ WBAL WBZ WBZA KDKA... CBS—George Hall's Orchestra: WABC WOKO WDRC WCAU WJAS... 6:00 P.M. NBC—Mme. Frances Alda, soprano: WFAF CBS—Buck Rogers in the 25th Century: WABC WOKO WAAB WDRC WCAU WJAS... 6:15 P.M. CBS—Bobby Benson and Sunny Jim: WABC WOKO WAAB WCAU WDRC... 6:30 P.M. CBS—The Dictators; Freddie Rich's Orchestra: WABC WDRC WAAB WOKO WCAL... 6:45 P.M. NBC—Cheerio Musical Mosaics; Jan Peerce, tenor; male chorus; orchestra: WFAF WEEI... 7:00 P.M. NBC—Mountaineers, hill billy songs and sketch: WFAF WWSH... 7:15 P.M. NBC—Billy Batchelor, sketch: WFAF WGY WWSH... 7:30 P.M. NBC—Lum and Abner, comedy team: WFAF WGY WLW WEEI WWSH... 7:45 P.M. CBS—Boake Carter, news: WABC WNAC WCAU WJAS... 8:00 P.M. NBC—The Goldbergs, comedy sketch: WFAF WFI WEEI WWSH... 8:15 P.M. CBS—Sweet Rhythm String Quartet: WJZ KDKA WBZ-WBZA—Tessie the Typist, skit... 8:30 P.M. NBC—Taronzan of the Apes

Glen Gray 10:00 P.M.
CBS

(TUESDAY CONTINUED)

- 8:00 P.M.**
NBC—Julia Sanderson and Frank Crumit, soloists; incidental music: WFAF WGY WEEI WCSH WFI
CBS—The Columbians; Freddie Rich's Orchestra: WABC WOKO WNAC WDRC WJAS
NBC—Crime Clues, mystery drama: WJZ WBAL WBZ WBZA KDKA WLW
NBC—Benny Meroff Review: WRVA
WOR—Christmas Ghosts, Marie Suprano, William Hargrade, baritone
- 8:15 P.M.**
CBS—Edwin C. Hill, "The Human Side of the News": WABC WOKO WNAC WCAU WDRC WJAS
WRVA—Organ Recital
- 8:30 P.M.**
NBC—Wayne King's Orchestra: WFAF WEEI WGSW WFI WGY
CBS—The Voice of Experience: WABC WNAC WDRC WCAU WJAS
NBC—Adventures in Health, Dr. Herman Bundesen: WJZ WBAL WBZ WBZA KDKA WLW
WOR—Frank and Flo and Basil Ruysdael
- 8:45 P.M.**
CBS—Fray and Braggiotti, piano team: WABC WOKO WNAC WDRC WCAU WJAS
NBC—Trade and Mark, Billy Hillpot and Scrappy Lambert; Nat. Shilkret's Orchestra: WJZ WBAL WBZ WBZA KDKA WLW
- 9:00 P.M.**
NBC—Ben Bernie's Orchestra: WFAF WEEI WGSW WGY WLW WRVA WFI
CBS—Philadelphia Orchestra; Leopold Stokowski, conductor: WABC WOKO WNAC WDRC WCAU WJAS
NBC—Musical Memories, Edgar A. Guest, poet; vocal trio; Josef Koestner's Orchestra: WJZ WBZ WBZA WBAL KDKA
WOR—Alexander Woolcott, the Town Crier: WABC WOKO WNAC WDRC WCAU WJAS
WOR—Ralph Grosvenor, tenor; "Wishing"
- 9:15 P.M.**
NBC—Ed Wynn, the Fire Chief, with Graham McNamee; male quartet: WFAF WGSW WFI WGY WEEI WRVA WLW
CBS—Andre Kostelanetz presents Evan Evans, baritone, vocalist and chorus: WABC WOKO WDRC WJAS
NBC—Men of Daring, dramatic sketch: WJZ WBZ-WBZA—The Witch of Endor, drama
WCAU—Blanche Calloway's Orchestra
WOR—"Footlight Echoes" Bide Dudley, speaker; Soloists: Jack Arthur, baritone; Verna Osborne, soprano; Veronica Wiggins, contralto; Mary Merker, soprano; The Crusaders, quartet; Lewis Reid, announcer
- 9:45 P.M.**
WCAU—Newspaper Adventures
- 10:00 P.M.**
NBC—The Cruise of the Seth Parker, dramatic broadcasts by Phillips Lord and crew en route around the world: WFAF WEEI WGSW WFI WGY WRVA WLW
CBS—Glen Gray's Orchestra; Irene Taylor, songs; Do Re Mi trio: WABC WOKO WAAB WDRC WCAU WJAS
NBC—Musical Sunshine Cruise, Leonard Joy's Orchestra: WJZ
WBZ-WBZA—Billy Lossee's Orchestra
WNAC—Fabien Sevitzky's Orchestra; Professor Robert Rogers
WOR—Teddy Bergman, comedian; Betty Queen, contralto; The Rondoliers, quartet
- 10:15 P.M.**
WOR—Harlan Eugene Read, news
- 10:30 P.M.**
NBC—Madame Sylvia of Hollywood: WFAF WGY WEEI WFI
CBS—Columbia News Service: WABC WAAB WOKO WDRC WJAS
NBC—Pedro Via's Orchestra: WJZ KDKA WBAL
WBZ-WBZA—Buccaneers Male Quartet
WCAU—Vincent Travers' Orchestra
WCSH—Parker's Program
WLW—The Zero Hour
WNAC—Over the Cameraman's Shoulder
WOR—Eddy Brown, violinist; miniature symphony
WRVA—Concert Orchestra
- 10:45 P.M.**
NBC—Robert Simmons, tenor; Jerry Sears' Orchestra: WFAF WEEI WFI WGSW
CBS—Evan Evans, baritone; Concert Orchestra: WABC WOKO WAAB WDRC WCAU WJAS
WBZ-WBZA—News Flashes
WGY—Piano Pals; Sherman and Leonard
WNAC—News Flashes; Weather
- 11:00 P.M.**
NBC—John B. Kennedy, news: WFAF WGY WGSW WFI
NBC—The Leaders, male trio: WJZ WBAL
KDKA—Sports Review
WBZ-WBZA—Weather; Temperature; Sports Review, Bill Williams
WCAU—Boake Carter, talk
WEEI—News Flashes; Weather Forecast
WLW—The Keynotes, harmony team
WNAC—Ranny Weeks' Orchestra
WOR—"Moonbeams"
WRVA—Old Timers Jollification

(Continued from Page 7)

times-a-week CBS broadcasting schedule . . . The Yacht Club Boys will return to the airwaves for the same sponsor after they finish their winter engagement at the swanky Colony Club in Hollywood.

Claude Hopkins' orchestra has been signed for the one-hour, one-time Chrysler broadcast January 7 via WABC-CBS . . . Luis Russell's band is substituting for Hopkins on the CBS "Harlem Serenade" each Thursday, while Claude is on the road . . . Ruth Etting will spend Christmas visiting relatives in Nebraska. She will return to Hollywood . . . Bing Crosby's "Too Much Harmony" is the first picture in seven years to play more than a week at the Plaza Theater in London. It was held over two weeks . . . Pressure of preparing programs for their two commercial broadcasts weekly has forced Glen Gray and his Casa Loma orchestra to cut their CBS sustaining periods from four to two a week, Monday and Saturday nights . . . Billy White, the "platinum-voiced" tenor from Chicago, has joined Glen Gray as vocalist. White formerly was featured with the Gus Arnheim, Ted Fiorito, and the Frank Westphal orchestras . . . Tony Wons won a twenty-six week renewal from Johnson Floorwax last week. This will carry the program through to July 5. Peggy Keenan and Sandra Phillips, his charming piano redheads, were also renewed. Wons will do three other programs in addition to the Johnson spels . . . Don Bestor's walkout at the Hotel Biltmore is the culmination of a lot of internal strife.

When Jack Pearl takes Bert Lahr's place January 3, another orchestra may replace George Olsen. The Baron is drawing down heavy dough, and the extra added expense may have to be offset by cheaper musikers . . . "When Shall We Meet Again," which was played by Rubinoff last Sunday night and is being popularized by a great many artists—including Lanny Ross and Helen Morgan—was written by Uncle Nick Kenny, Radio Editor of the New York Mirror . . . When you heard Walter Winchell say he was going to give an impersonation of Cantor, it was Cantor himself who was at the microphone, giving the spiel . . . After the program Winchell's wife called him at the studio to compliment him for his excellent job of impersonation . . . CBS has a program, "Presenting Mark Warnow." Mrs. Mark had a program all her own,



NINO MARTINI

will continue to sing with the Seven Star Revue, CBS-WABC network at 9 p. m. EST, despite the fact that the popular young Italian tenor, discovered by opera through radio, will join the Metropolitan Opera Company for its season.

under the same title. She—presented—Mark—Warnow—with a bouncing baby girl. Congrats, Mark!

Have you noticed that the Marx Brothers used some of the gags in their new picture, "Duck Soup," that they used on the air last season? . . . A woman sent a check to the Voice of Experience, for one of his new books of the same title; she failed to give her address. He mentioned this over the air, and when he walked out of the studio immediately after the broadcast, Helen Fox, the CBS hostess, handed him the address. The woman, it seems, called in after she heard the announcement.—I was dere, Sharlie.

Paul Whiteman is kept busy these days

escorting his mother and father around the town. This is the first visit of his parents to New York and are they getting a kick out of it! . . . Harry Horlick, in his leisure moments, is one of the most dignified of orchestra leaders but, at the conclusion of his Monday night broadcasts, his sartorial elegance is much ruffled. It is the vehemence with which he conducts that causes all the trouble . . . Mildred Bailey, radio's "Rockin' Chair" lady, hasn't used a rocking chair in four years and, when she did, it was merely a publicity stunt.

Program Notes

The Pickens Sisters, NBC's harmony trio, have returned to New York after several months of picturemaking in Hollywood. They soon will be heard several times each week, in a new series of programs over the NBC networks. Incidentally, Jane, Helen, and Patti left Hollywood when the thermometer registered 75, and four days later they landed in New York in a snowstorm. They *loved* it—so they said . . . "Lazy Dan, the Minstrel Man," otherwise Irving Kaufman, will gain a coast-to-coast WABC-Columbia audience on Sunday, January 7, when twenty-six CBS stations will be added to the network now broadcasting his program.

The opening session of Congress on January 3 will be aired by both chains . . . Mme. Ernestine Schumann-Heink will be heard over an NBC-WFAF network at 12 midnight EST, Christmas Eve. She will sing "Stille Nacht" . . . James Melton will do a return engagement as the soloist on the A & P Gypsies program Christmas night.

Three big radio features, Alexander Woolcott's "The Town Crier," Andre Kostalanetz Presents, and California Melodies, start new schedules on the CBS-WABC network during the week of December 24. Woolcott will tell his mystifying, terrifying tales of horror Tuesdays and Fridays from 9:15 to 9:30 p. m. EST starting Tuesday, December 26. As soon as Alex stops, the Kostalanetz program, featuring Evelyn MacGregor, contralto; Evan Evans, baritone; a large orchestra and chorus, will begin, running until 10 p. m. EST. California Melodies, Raymond Paige's program from the West Coast, which has come to be considered as the route to Broadway by Western talent, will be heard every Thursday night from 9:30 to 10 p. m. EST, starting December 28.

11:15 P.M.

- NBC**—Jack Russell's Orchestra: WFAF WGY WEEI WGSW WFI
CBS—Gertrude Niesen, Songs: WABC WOKO WAAB WDRC WCAU WJAS
NBC—The Poet Prince; Anthony Frome, tenor: WJZ WBAL KDKA
WBZ-WBZA—Joe Reines' Orchestra
WLW—Rotay and Muldowney

11:30 P.M.

- NBC**—Paul Whiteman's Orchestra: WFAF WGSW WFI WEEI
CBS—Isham Jones' Orchestra: WABC WOKO WNAC WDRC WCAU
NBC—Phil Harris' Orchestra: WJZ WBZ WBZA WBAL
WGY—Larry Funk's Orchestra
WLW—Barney Rapp's Orchestra
WOR—Ozzie Nelson's Orchestra
WRVA—Tantilla Gardens Orchestra

11:45 P.M.

- WLW**—Mel Snyder's Orchestra

12:00 Mid.

- NBC**—Rudy Vallee's Orchestra: WFAF WGY WEEI
CBS—Vincent Lopez' Orchestra: WABC WOKO WNAC WCAU WJAS
NBC—Paul Ash's Orchestra: WJZ WLW WBZ WBZA
KDKA—Marty Gregor's Orchestra
WOR—Sam Robbins' Orchestra

12:30 A.M.

- NBC**—Freddie Martin's Orchestra: WFAF WEEI WGY
CBS—Ace Brigade's Orchestra: WABC WOKO WNAC WCAU
NBC—Harry Sosnik's Orchestra: WJZ WBZA WBZ
KDKA—Jack Bruce's Orchestra
1:00 A.M.
CBS—Luis Russell's Orchestra: WABC



CHARLES MARTIN

PRESENTS:

Dramatic CHRISTMAS Greetings



Author and Director

FIVE STAR FINAL CRIMINAL COURT W M C A

Wednesday, Dec. 27

Stoopnagle and Budd

9:15 P.M.
CBS

Burns and Allen

9:30 P.M.
CBS

MORNING

8:00 A.M.
NBC—Organ Rhapsody; Richard Leibert, organist: WEAF
CBS—Salon Musicale; Vincent Sorey, Conductor: WABC WCAU
NBC—Morning Devotions; Lowell Patton, organist: WJZ WBAL WBZ KDKA WBZA
WEEI—Morning News Flashes
WNAC—Shopping Around the Town
WOR—Program Resume

8:10 A.M.
WOR—Al Woods, songs and patter

8:15 A.M.
NBC—Don Hall Trio: WJZ WBAL KDKA WBZ WBZA
WCSH—Morning Devotions
WEEI—Shopping Service
WGY—Bradley Kincaid, mountain ballads

8:30 A.M.
NBC—Cheerio, inspirational talk and music: WEAF WEEL WCSH WFI WGY
CBS—Sunny Melodies; Mark Warnow, Conductor: WABC WCAU
NBC—Lew White, organist: WJZ WBAL KDKA WBZ WBZA
WOR—Martha Manning, sales talk

8:45 A.M.
WBZ-WBZA—Strolling Tom
WCAU—Sam Moore's Meeting

9:00 A.M.
NBC—Morning Glories; Orchestra: WEAF WLIT WGY
CBS—Eton Boys, Male Quartet: WABC WOKO WNAC WDRC WCAU WJAS
NBC—The Breakfast Club, dance band: WJZ WBAL KDKA
WBZ-WBZA—Virginia Reade, talk
WCSH—Trade Review
WEEI—Clothes Institute
WOR—"Our Children" with Mary Olds; Edward Nell, Jr., baritone; George Shackley, organist

9:15 A.M.
CBS—The Three Gems; Dennis, Reese and Wells; Comedy and Songs: WABC
NBC—Laudt Trio and White, songs and comedy: WEAF WGY WCSH WEEL WLIT
CBS—Vincent Sorey's Orchestra: WOKO WNAC WDRC WJAS
WCAU—Words and Music
WOR—Miss Kathrine 'n' Calliope, talk

9:30 A.M.
CBS—Metropolitan Parade: WABC WOKO WCAU
NBC—Bradley Kincaid, the Mountain Boy; hill-billy songs: WEAF WCSH WEEL
KDKA—Style and Shopping Service
WBZ-WBZA—Breakfast Club, orchestra (NBC)
WGY—Scissors and Paste
WNAC—Don Ross, the Serenader

9:45 A.M.
CBS—Metropolitan Parade: WNAC WDRC WJAS
NBC—Breen and de Rose, songs and ukulele: WEAF WEEL WCSH WGY
CBS—Reis and Dunn: WABC
KDKA—News and Minute Manners
WBAL—Shopping with Nancy Turner
WOR—Shopping with Jean Abbey

10:00 A.M.
NBC—The Mystery Chef, recipes: WEAF WEEL WCSH WFI WGY
CBS—Gordon, Dave and Pann, Songs: WABC WOKO WAAB WDRC WCAU WJAS
NBC—To be announced: WJZ WBZ WBZA WBAL
WNAC—Buddy Clark, soloist
WOR—Pure Food Hour

10:15 A.M.
NBC—The Morning Home Circle, household philosophy: WEAF WEEL WCSH WFI
CBS—Bill and Ginger, Songs: WABC WOKO WNAC WCAU WJAS
NBC—Clara, Lu 'n' Em: WJZ WBAL WBZ WBZA
WGY—To be announced

10:30 A.M.
NBC—The Three Scamps, trio: WEAF WCSH WEEL
CBS—In the Luxembourg Gardens; Vincent Sorey, Conductor: WABC WOKO WAAB WDRC WJAS
NBC—Today's Children, dramatic sketch: WJZ WBAL WBZ WBZA KDKA
WCAU—Patsy Darling and the Knickerbockers
WGY—Market Basket
WNAC—Song Album with Walter Kidder, baritone
WRVA—Organ Melodies

10:45 A.M.
CBS—Will Osborne's Orchestra; Pedro De Cordoba and his Friendly Philosophy: WABC WOKO WNAC WDRC WCAU
NBC—Betty Crocker, cooking talk: WEAF WEEL WFI WGY WCSH
NBC—Irma Glen, organist: WJZ WBAL KDKA WBZ WBZA
WBZ-WBZA—Duke Dewey's Hickory Nuts

11:00 A.M.
NBC—Juan Reyes, pianist: WEAF WCSH WLIT
CBS—Cooking Closeups; Mary Ellis Ames: WABC WOKO WNAC WCAU WDRC WJAS

NBC—Four Southern Singers: WJZ WBAL KDKA WBZ WBZA
WEEL—Edison Program
WGY—Georgia Wildcats
WOR—Joseph Bier, baritone

11:15 A.M.
NBC—Radio Household Institute, dramatization: WEAF WEEL WGY WCSH WLIT
CBS—The Four Showmen, Male Quartet: WABC WOKO WNAC WCAU WDRC WJAS
NBC—Singing Strings, string ensemble: WJZ WBAL
KDKA—Sammy Fuller
WBZ-WBZA—Homemaking Hints
WOR—"Around the Wheel of Events", Mary L. Roberts

11:30 A.M.
NBC—Betty Moore, Interior Decorating; Lew White, organ: WEAF WLIT WGY WEEL
CBS—Tony Wons: WABC WOKO WNAC WDRC WCAU WJAS
NBC—U. S. Army Band: WJZ WBAL KDKA WBZ WBZA
WCSH—Musical Program
WOR—Ann Stevens' Thrift Hour

11:45 A.M.
NBC—Fields and Hall, songs and comedy: WEAF WEEL WCSH WGY
CBS—Dancing Echoes: WABC WJAS WCAU WAAB
WNAC—Store News; News Flashes
WOR—Allen Meaney, The Musical Doctor

AFTERNOON

12:00 Noon
NBC—Gene and Arnold and the Commodores: WEAF WEEL WGY WCSH WLIT
CBS—The Voice of Experience: WABC WNAC WDRC WCAU WJAS
NBC—Eva Taylor, crooner: WJZ KDKA WBAL WBZ-WBZA—News, Ernest Beaufort
WOR—Allen Meaney, The Musical Doctor

12:15 P.M.
NBC—Johnny Marvin, tenor: WEAF
CBS—Gypsy Nina, Songs: WABC WOKO WNAC WDRC WCAU
NBC—Wendell Hall, ukelele: WJZ WBAL KDKA WBZ-WBZA—Weather; Market Reports
WCSH—Farm Flashes; Weather
WEEL—News Flashes; Market Reports
WGY—Skip, Step and Happiana, songs
WOR—"Something for Everyone," Ernest Naftzger

12:30 P.M.
NBC—On Wings of Songs, string trio; Rosalie Wolfe, soprano: WEAF
CBS—News Flashes: WABC WOKO WNAC WDRC WCAU WJAS
NBC—National Farm and Home Hour: WJZ WBAL WBZ WBZA
KDKA—News and Markets
WCSH—Dance Marathon
WGY—WGY Farm Program
WOR—St. Thomas' Carillon

12:35 P.M.
CBS—Mischa Raginsky's Ensemble: WABC WOKO
WCAU—A Woman Looks at the World, Hope LeBarr Roberts
WNAC—The Shoppers' Exchange

12:40 P.M.
WOR—Alexander Haas' Gypsy Ensemble

12:45 P.M.
KDKA—Ernie Holst's Orchestra
WCAU—The Noontimers
WCSH—Eastland Program
WEEL—A Bit of This and A Bit of That

12:55 P.M.
WOR—Ohman and Arden, "The World's Most Beautiful Waltzes"

1:00 P.M.
CBS—Marie, the Little French Princess, drama: WABC WNAC WCAU
NBC—Market and Weather Reports: WEAF KDKA—National Farm and Home Hour (NBC)
WCSH—Church Federation Midweek Service
WGY—Albany on Parade
WOR—Dr. Wynne's Health Talk

1:05 P.M.
WOR—Musical Revue: Ira Schuster and Lewis Charles

1:15 P.M.
CBS—The Playboys, Piano Trio: WABC WOKO WNAC WDRC
NBC—Close Harmony, male chorus: WEAF WEEL WFI
WCAU—Harold Knight's Orchestra
WCSH—Leo Zollo's Orchestra (NBC)

1:30 P.M.
NBC—Orlando's Concert Ensemble: WEAF WEEL WCSH WGY WFI
CBS—Easy Aces, Comedy: WABC WNAC WCAU WJAS
NBC—Vic and Sade: WJZ WBAL WBZ WBZA
KDKA—Ernie Holst's Orchestra
WOR—Rosalind Genet, books
WRVA—Market Reports

1:45 P.M.
CBS—Painted Dreams, drama: WABC WCAU WJAS
NBC—The Merrie Men, male quartet: WJZ WBAL
WBZ-WBZA—Governor Ely's Committee on Street and Highway Safety

WNAC—Luncheon Music
WRVA—Sunshine Program

2:00 P.M.
NBC—Leo Zollo's Orchestra: WEAF WEEL WLIT
CBS—The Captivators: WABC WOKO WNAC WDRC WJAS
NBC—Happy Days in Dixie: WJZ WBZ WBZA KDKA WBAL
WCAU—Dr. Copeland Health Talk
WCSH—Lura Thomas Brown
WGY—Don Dixon, songs
WOR—Dr. Arthur Frank Payne: The Psychologist Says

2:15 P.M.
CBS—Romance of Helen Trent: WABC WCAU
CBS—Artist Recital; Crane Calder, bass: WNAC WDRC WJAS
WCSH—Leo Zollo's Orchestra (NBC)
WGY—WGY Matinee Players
WOR—Sally and Sue, songs and comedy

2:30 P.M.
NBC—Two Seats in the Balcony, revue; orchestra: WEAF WCSH WLIT WGY
CBS—Rhythm Kings; Orchestra: WABC WOKO WNAC WDRC WJAS
NBC—Smack Out, comedy sketch: WJZ WBZ WBZA
KDKA—KDKA Home Forum
WBAL—Hilda Naidetsch Zetzer, soprano
WCAU—WCAU Women's Club of the Air
WEEL—Kitchen of the Air
WOR—Rutgers Home Economics

2:45 P.M.
NBC—Words and Music; soloist and narrator: WJZ WBAL WBZ WBZA
WOR—The Hitmakers, Orchestra

3:00 P.M.
CBS—La Forge Berumen Musicale: WABC WOKO WNAC WDRC WJAS
NBC—Ma Perkin's, drama: WEAF WGY WCSH WFI
WCAU—Caballeros
WEEL—Dal Castillo, organist
WOR—Elizabeth McShane: "Fashions"

3:15 P.M.
NBC—The Golden Treasury; John Brewster, poetry readings; Grand Trio: WEAF WFI WCSH
NBC—Heinie and His Grenadiers: WJZ KDKA WBAL
WBZ-WBZA—"Health", Dr. Royal S. Copeland
WCAU—WCAU Women's Club of the Air
WNAC—La Forge Berumen Musicale (CBS)
WOR—Ernest Charles, tenor

3:30 P.M.
NBC—Woman's Radio Review; orchestra; Claudine MacDonald: WEAF WGY WEEL WFI WCSH
CBS—Manhattan Moods: WABC WOKO WNAC WDRC WNAS
WBZ-WBZA—Home Forum Cooking School
WCAU—Bright Lights
WOR—YMCA Spanish Lesson, Professor Maxine Itturlida

3:45 P.M.
NBC—Ward and Muzzy, piano duo: WJZ WBAL KDKA—Human Values
WNAC—Council of New England
WOR—Leo Freudberg's Orchestra

4:00 P.M.
NBC—Pop Concert: WEAF WTIC WFI
CBS—Musical Album of Popular Classics: WABC WOKO WNAC WCAU WDRC WJAS
NBC—Betty and Bob, dramatic sketch: WJZ WBAL KDKA WBZ WBZA
WCSH—Hope Jackson Cook, soprano
WEEL—News Flashes
WGY—Rural Public Works Talk
WOR—Dr. H. I. Strandhagen, "What's Beneath the Skin?"

4:15 P.M.
NBC—Frances White, songs: WJZ WBZ WBZA WBAL
KDKA—Utility Hall
NBC—Pop Concert: WCSH WEEL WGY
WNAC—Consumer's Council of New England
WOR—Mildred Cole, contralto; orchestra

4:30 P.M.
NBC—Jack and Loretta Clemens, songs and guitar: WEAF WTIC
CBS—News Flashes: WABC WOKO WNAC WDRC WCAU WJAS
KDKA—Frances Ingram
WBZ-WBZA—Concert; Edwin Otis, baritone; Doris Tirrell, pianist
WCSH—Home and Foreign Missions
WGY—Piano Pals; Sherman and Leonard
WOR—Guy Hunter, blind entertainer

4:35 P.M.
CBS—The Merry Makers :Orchestra: WABC WOKO WNAC WDRC WJAS
WCAU—Topics by P. C. Shoffner

4:45 P.M.
NBC—The Lady Next Door, children's program: WEAF WEEL WGY WLIT
CBS—Ye Happy Minstrel and Tiny Band: WABC WCAU WNAC WDRC
NBC—Morin Sisters, harmony trio: WJZ WBAL

KDKA—News and Markets
WBZ-WBZA—Agricultural Market Reports
WCSH—Loring, Short and Harmon
WOR—Frances Ingram, Thru the Hollywood Looking Glass

5:00 P.M.
NBC—Ed Kirkaby's Orchestra: WEAF WCSH
CBS—Skippy, children's skit: WABC WOKO WAAB WDRC WCAU
WEEL—Amy Marcy Eaton, pianist
WGY—Stock Reports
WNAC—Five O'Clock Revue
WOR—Studio Orchestra

5:05 P.M.
WOR—Program Resume

5:15 P.M.
CBS—Joan Olsen, songs; Orchestra: WAAB WDRC WJAS
NBC—Babes in Hollywood, dramatic sketch: WJZ WBAL
CBS—On The Air Tonight: WABC
KDKA—KDKA Kiddies Club
WBZ-WBZA—News, Henry Edison Williams
WCAU—Friend of Youth
WEEL—Jordan Marsh Program
WGY—Ed Kirkaby's Orchestra (NBC)
WOR—Gypsy Orchestra and Robert Reud "Town Talk"

WRVA—Cecil and Sally; Evening Meditations; Sports Reporter
WTIC—Ed Kirkaby's Orchestra (NBC)

5:30 P.M.
NBC—Adventures of Tom Mix and His Straight Shooters: WEAF WEEL WTIC WLIT WGY WCSH
CBS—Jack Armstrong, All American Boy: WABC WNAC WDRC WCAU WOKO WJAS
NBC—Singing Lady, children's program: WJZ WBZ WBZA WBAL KDKA
WOR—The Count of Monte Cristo; drama

5:45 P.M.
NBC—Wizard of Oz, dramatization: WEAF WTIC WEEL WGY WCSH
CBS—Cowboy Tom: WABC WAAB WCAU WDRC WJAS
NBC—Little Orphan Annie: WJZ WBAL WBZ WBZA KDKA WRVA
WNAC—The Cosmopolitans, novelty quintet
WOR—A Child's Story

NIGHT

6:00 P.M.
NBC—Xavier Cugat's Orchestra: WEAF
CBS—Bobby Benson and Sunny Jim: WABC WOKO WAAB WDRC WCAU WJAS
KDKA—News, Pat Haley
WBZ-WBZA—New England Conservatory Concert
WCSH—Dance Marathon
WEEL—The Evening Tattler
WGY—Evening Brevitvies
WLW—Jack Armstrong, sketch
WNAC—News Flashes; Weather
WOR—Uncle Don

6:15 P.M.
NBC—Xavier Cugat's Orchestra: WEAF
CBS—Bobby Benson and Sunny Jim: WABC WOKO WAAB WDRC WCAU
KDKA—Sports; Program Preview
WBZ-WBZA—Westminster Choir (NBC)
WCSH—Al Buck's Sports Review
WGY—Joe and Eddy, comedy sketch
WLW—Joe Emerson, tenor
WNAC—Jacques Fischer's Orchestra

6:30 P.M.
NBC—George R. Holmes, talk; News Service: WEAF WGY WFI
CBS—Theo Karle, tenor: WABC WCAU WAAB WDRC
NBC—Irene Beasley, contralto: WJZ WBAL
KDKA—Evensong
WBZ-WBZA—Old Farmers Almanac; Sports Review
WCSH—Randall and McAllister Program
WEEL—News Flashes; Market Reports
WLW—Bob Newhall, Mail Pouch Sportsman
WNAC—Detectives Black and Blue, skit
WOR—Al and Lee Reiser and Their Magicians of Melody, with William Hargrave, baritone
WRVA—The News Reporter

6:45 P.M.
CBS—Music Box; Enzo Aita, tenor: WABC WCAU
NBC—Jan Pearce, tenor; orchestra: WEAF
CBS—Enoch Light's Orchestra: WAAB WDRC
NBC—Lowell Thomas, today's news: WJZ WBZ WBZA KDKA WLW WBAL
WEEL—Your Folks and Mine, drama
WCSH—Your Folks and Mine, drama
WGY—Red Davis, sketch
WNAC—Organ Selections
WOR—Stanley Meehan, tenor
WRVA—Red Davis, sketch

7:00 P.M.
NBC—Shirley Howard, vocalist; the Jesters; Milt Rettenberg, pianist; Tony Callucci, guitar: WEAF WTIC WEEL WCSH WLIT WGY
CBS—Myrt and Marge, drama: WABC WOKO WDRC WCAU WNAC WJAS
NBC—Amos 'n' Andy: WJZ WBAL WBZ WBZA KDKA WLW WRVA
WOR—Ford Frick, Sports Resume

Dangerous Paradise 8:30 P.M.
NBC

Fred Waring 10:00 P.M.
CBS

(WEDNESDAY CONTINUED)

7:15 P.M.

NBC—Billy Batchelor, sketch: WEAJ WGY WWSH
CBS—Just Plain Bill, skit: WABC WNAC WCAU WJAS
NBC—Gems of Melody: WJZ WBZ WBZA KDKA WBAL
WEEI—After Dinner Revue
WLW—Detectives Black and Blue, sketch
WOR—Gabriel Heater, news commentator
WRVA—Current Events

7:30 P.M.

NBC—Lum and Abner, comedy sketch: WEAJ WGY WEEI WWSH WLW
CBS—Music on the Air: WABC WOKO WNAC WDRG WCAU WJAS
NBC—Potash and Perlmutter: WJZ WBZ WBZA KDKA WBAL
WOR—“Terry and Ted”, adventure story; Don Carney
WRVA—Kiddies Club

7:45 P.M.

NBC—The Goldbergs, comedy sketch: WEAJ WEEI WWSH WLIT WGY
CBS—Boake Carter, News: WABC WNAC WCAU WJAS
NBC—Irene Rich in Hollywood, skit: WJZ WBAL WBZ WBZA KDKA
WLW—Red Davis, sketch
WOR—Harry Hershfield
WRVA—Tarzan of the Apes, sketch

8:00 P.M.

NBC—Bert Lahr, comedian; George Olsen's Orchestra: WEAJ WTIC WEEI WWSH WLIT WGY
CBS—Phil Ducey, Frank Luther and Jack Parker, with Vivien Ruth, vocalists: WABC WNAC WDRG
NBC—Crime Clues, mystery drama: WJZ WBZ WBZA KDKA WLW WBAL
WCAU—Love Making Incorporated
WOR—“Detectives Black and Blue”, mystery drama

8:15 P.M.

CBS—Edwin C. Hill; The Human Side of the News: WABC WOKO WNAC WDRG WCAU WJAS
WOR—Billy Jones and Ernie Hare
WRVA—Melody Mart

8:30 P.M.

NBC—Wayne King's Orchestra: WEAJ WWSH WLIT WGY WRVA
CBS—Albert Spalding, violinist; Conrad Thibault, baritone; Don Voorhees' Orchestra: WABC WOKO WNAC WDRG WCAU WJAS
NBC—Dangerous Paradise, dramatic sketch: WJZ WBAL WBZ WBZA KDKA WLW
WEEI—Stage Show of the Air
WOR—Handel and “The Messiah” narrator, Soloists and Chorus

8:45 P.M.

NBC—Red Davis, dramatic sketch: WJZ WBZ WBZA KDKA WBAL
WLW—The Ponce Sisters

9:00 P.M.

NBC—The Troubadours; orchestra; soloist; and guest artists: WEAJ WWSH WLIT WGY WLW WEEI WRVA WTIC
CBS—Philadelphia Orchestra; Leopold Stokowski, Conductor: WABC WOKO WNAC WDRG WCAU WJAS
NBC—Warden Lawes in 20,000 Years in Sing Sing: WJZ WBAL WBZ WBZA KDKA

9:15 P.M.

CBS—Colonel Stoopnagle and Budd; Vera Van, contralto; Jacques Renard's Orchestra: WABC WOKO WNAC WDRG WCAU WJAS

9:20 P.M.

WOR—Pauline Alpert, The Whirlwind Pianist

9:30 P.M.

NBC—Leo Reisman's Orchestra; Phil Ducey, baritone: WEAJ WWSH WLIT WGY WEEI
CBS—Guy Lombardo's Orchestra; Burns and Allen, Comedy Team: WABC WOKO WNAC WDRG WCAU WJAS
NBC—Music Magic; Orchestra; Soloists: WJZ WBAL WBZ WBZA KDKA
WLW—Cotton Queen Program
WOR—Half Hour in Three-quarter Time with Dorothy Miller and Garfield Swift; George Shackley, conducting
WRVA—Tantilla Gardens Orchestra

10:00 P.M.

NBC—Corn Cob Pipe Club of Virginia, barnyard music; male quartet: WEAJ WTIC WWSH WLIT WGY WLW WEEI WRVA
CBS—Fred Waring's Orchestra: WABC WOKO WNAC WDRG WCAU WJAS
NBC—Concert; Egon Petri, pianist; Symphony Orchestra: WJZ WBAL
WOR—DeMarco Girls and Frank Sherry, tenor



LILY PONS

stars in the broadcast of the Metropolitan Opera on Saturday, December 30, at 2 p. m. EST over an NBC-WEAJ network. The opera will be “Mignon” and will include among its stars Lucrezia Bori and Tito Schipa.

10:15 P.M.

WBZ-WBZA—Joe and Batteese, sketch
WOR—Harlan Eugene Read

10:30 P.M.

NBC—National Radio Forum: WEAJ WEEI WGY WTIC WRVA WWSH
CBS—Columbia News Service: WABC WOKO WDRG WJAS
KDKA—Around the Cracker Barrel
WBZ-WBZA—Joe Rines' Orchestra
WCAU—Blanche Calloway's Orchestra
WNAC—Sid Reinherz' Orchestra
WOR—Dance Orchestra

10:45 P.M.

CBS—Presenting Mark Warnow; Gertrude Nielsen; Four Clubmen Quartet; Orchestra: WABC WOKO WAAB WDRG WCAU
KDKA—Marty Gregor's Orchestra
WBZ-WBZA—News Flashes
WNAC—News Flashes; Weather
WOR—Pauline Alpert, whirlwind pianist

11:00 P.M.

NBC—Eddie Elkins' Orchestra: WEAJ WGY WTIC WWSH
NBC—Three Scamps: WJZ WBAL
KDKA—Sports Review
WBZ-WBZA—Weather; Sports Review
WCAU—Boake Carter, talk
WEEI—Weather Forecasts; News Flashes
WLW—Popular Follies
WNAC—Jack Fisher's Orchestra
WOR—“Moonbeams”
WRVA—Dance Orchestra

11:15 P.M.

NBC—The King's Jesters, harmony trio: WEAJ WGY WTIC WEEI WWSH
CBS—Modern Male Chorus: WABC WOKO WAAB WDRG WJAS
NBC—Poet Prince: WJZ WBAL
KDKA—Ernie Holst's Orchestra
WBZ-WBZA—Kay Fayre, soloist
WCAU—The Meistersingers

11:30 P.M.

NBC—Don Bestor's Orchestra: WEAJ WTIC WWSH WRVA
CBS—Ozzie Nelson's Orchestra: WABC WNAC WDRG
NBC—Enric Madriguera's Orchestra: WJZ WBZ WBZA WBAL
WCAU—Vincent Travers' Orchestra
WEEI—Jack Denny's Orchestra
WGY—Larry Funk's Orchestra
WLW—Evening Serenade
WOR—William Scotti's Orchestra

11:45 P.M.

WCAU—Ernie Valle's Orchestra
WOKO—Ozzie Nelson's Orchestra (CBS)

12:00 Mid.

NBC—Phil Harris' Orchestra: WEAJ WTIC WGY WEEI
CBS—Little Jack Little's Orchestra: WABC WOKO WNAC WCAU WJAS
NBC—Carlos Molina's Orchestra: WJZ WBZ WBZA WBAL
KDKA—Marty Gregor's Orchestra
WLW—Joe Chromis' Orchestra
WOR—Freddy Martin's Orchestra

12:15 A.M.

WLW—Stan Stanley's Orchestra

12:30 A.M.

NBC—Harry Sosnik's Orchestra: WEAJ WGY WTIC WEEI
CBS—George Hall's Orchestra: WABC WCAU WOKO
NBC—William Scotti's Orchestra: WJZ WBZ WBZA
KDKA—Jack Bruce's Orchestra

12:45 A.M.

WLIT—Harry Sosnik's Orchestra (NBC)

1:00 A.M.

CBS—Don Redman's Orchestra: WABC

Here's to a Musical
CHRISTMAS
**SIGMUND
SPAETH**
“The Tune Detective”

Warning
Don't wear a frown
in
1934
ALAN COURTNEY

To My Radio Friends—
My Warmest Greetings
of the Season
ARLENE JACKSON

ANNOUNCING
SEASON'S GREETINGS
A. L. ALEXANDER
WMCA

GREETINGS
To My Radio Friends
LESTER JAY

JACK ARTHUR

There Is Only ONE
RADIO GUIDE
The yearly subscription price is \$2.00;
And to make sure of your copy every week,
send in the coupon below.

RADIO GUIDE
423 Plymouth Court,
Chicago, Ill.
Gentlemen:
Enclosed please find \$....., for which send
RADIO GUIDE to me for (six months) (one year).
Name
Address
Town State

Paul Whiteman 10:00 P.M. NBC

UPSETTING THE CLOCK OF FAME

(Continued from Page 4)

I'm a failure. So bad . . . so pitiful that I had to be cut out of every bit of your picture."

"Quite the contrary," he smiled. "You were so good I had to cut you out. You

see, Irene, that picture was starring someone else and you were too vivid in it. That is not your fault. So now we are awarding you a contract where you can shine all you want to and there will be no star to protest. You'll be the star."

Again the unexpected had entered into Irene's life, bringing her glory. The most recent unexpected success was Irene's entry in radio. Here was something she knew nothing about. What magic charms did one have to possess to win over this intangible master?

Irene was a visitor at the fair, when a radio contract was unexpectedly handed to her on a golden platter. Then came her debut . . . she was frightened, jittery. She had acted before the unmerciful camera . . . she had registered emotion before large audiences in theaters, but this funny little black box . . . what kind of people were back of it . . . where did it take her voice?

However, Irene believed that she could get the best of this little black box and because she had faith in her own ability, she became a radio success. Her fan mail, newspaper and magazine reviews all told her that she was a success in her new element.

Irene was confident that her show on the air would intrigue listeners because it offered something novel. It dramatizes the thrills, the humor, the pathos, the excitement behind the glamour grinding cameras of filmland. How actors and actresses and production folk have to shiver in snow covered mountains . . . perspire in sultry deserts . . . dash through burning forests and other dangers to achieve art and realism for motion pictures is portrayed. It was something that Irene had lived, experienced and knew about, consequently, she was sure of its success.



GERTRUDE NIESEN

whom you hear frequently over the CBS-WABC network, was snapped in this restful pose in her modernistic boudoir. Do you suppose that peculiar looking glass dog (top left) is a good luck token?

- (THURSDAY CONTINUED)**
7:30 P.M.
 NBC—Lum and Abner, comedy team: WEAF WEEI WESH WGY WLW
 CBS—Mildred Bailey, Songs: WABC WDRS WCAU
 NBC—Recital; Cyrena Van Gordon, mezzo-contralto; Walter Golde, pianist: WJZ WBAL
 WBZ-WBZA—Laprel Brothers, quartet
 WNAC—Salon Gems
 WOR—"Terry and Ted", adventure story; Don Carney, narrator
 WRVA—Evelyn Harrison, soloist
7:45 P.M.
 NBC—The Goldbergs, comedy sketch: WEAF WEEI WESH WGY WFI
 CBS—Boake Carter, News: WABC WNAC WCAU WJAS
 NBC—Concert Footlights; Mario Cozzi, baritone; WJZ WBAL
 WBZ-WBZA—Tessie the Typist, skit
 WLW—Southern Black Birds
 WOR—Maverick Jim, Dramas
 WRVA—Tarzan of the Apes, sketch
8:00 P.M.
 NBC—Rudy Vallee's Orchestra; guest artists: WEAF WEEI WESH WGY WRVA WFI WLW
 CBS—Edith Murray songs: WABC WNAC WDRS WJAS
 NBC—Captain Diamond's Adventures, dramatic sea story: WJZ WBZ WBZA KDKA
8:15 P.M.
 CBS—Edwin C. Hill, "The Human Side of the News": WABC WOKO WNAC WDRS WCAU WJAS
 WOR—Willy Robyn, tenor; Marie Gerard, soprano
8:30 P.M.
 CBS—Voice of America; with William Lyon Phelps, Alex Gray, and Nat Shilkret's Orchestra: WABC WOKO WNAC WDRS WCAU WJAS
 NBC—Adventures in Health; Dr. Herman Bundesen: WJZ WBAL KDKA WBZ WBZA
 WOR—"That's Life," Dramatized News Headlines
8:45 P.M.
 NBC—The Sizzlers, male trio: WJZ WBAL KDKA WBZ WBZA
 WOR—Al and Lee Reiser, Two Pianos and John Kelvin, tenor
9:00 P.M.
 NBC—Captain Henry's Show Boat, vocalists and orchestra: WEAF WEEI WESH WGY WRVA WFI
 CBS—Philadelphia Orchestra; Leopold Stokowski, Conductor: WABC WOKO WNAC WDRS WCAU WJAS
 NBC—Death Valley Days, dramatic program: WJZ WBZ WBZA WLW KDKA WBAL
 WOR—Men of WOR; Harry Breuer, xylophonist; Walter Ahrens, baritone; The Crusaders Quartet; Sherman Keene, directing
9:15 P.M.
 CBS—Robert Benchley, Howard Marsh, Andrew Kostelanetz' Orchestra: WABC WNAC WDRS WOKO WCAU WJAS
9:30 P.M.
 CBS—California Melodies; Orchestra and Guest Stars: WABC WOKO WDRS WJAS
 WCAU—Happy Days
 WOR—De Marco Girls and Frank Sherry, tenor
9:45 P.M.
 WOR—Percy Waxman, interviewing the authors
10:00 P.M.
 NBC—Paul Whiteman's Orchestra and Radio Entertainers; Deems Taylor, master of ceremonies: WEAF WESH WGY WLW WEEI WFI
 CBS—Glen Gray's Orchestra; Irene Taylor, songs; Do Re Mi Trio: WABC WOKO WAAB WDRS WCAU WJAS
 NBC—Hands Across the Border, soloists and orchestra: WJZ WBAL WBZ WBZA WRVA
 WNAC—Fabien Savitzky's Orchestra; Professor Robert Rogers
 WOR—Elsie Thompson, organist, assisted by Stanley Meehan, tenor
10:15 P.M.
 WOR—Harlan Eugene Read
10:30 P.M.
 NBC—Echoes of the Palisades; Archer Gibson, organist; mixed chorus: WJZ WBAL WRVA KDKA
 CBS—Columbia News Service: WABC WAAB WDRS WOKO WJAS
 WBZ-WBZA—Joe Rines' Orchestra
 WCAU—Vincent Traver's Orchestra
 WNAC—Looking Over the Cameraman's Shoulder
 WOR—"The Jolly Russians", featuring Adia Kuznetzoff and Nicolina
10:45 P.M.
 CBS—Harlem Serenade; Hall Johnson Singers; Claude Hopkins' Orchestra and Aida Ward, Soloist: WABC WOKO WAAB WDRS WCAU WJAS
 WBZ-WBZA—News
 WNAC—News Flashes; Weather
11:00 P.M.
 NBC—Viola Philo, soprano: WEAF WESH WGY WFI WRVA
 NBC—The Leaders, male trio: WJZ WBAL KDKA—Sports Review
 WBZ-WBZA—Weather; Temperature; Sports
 WCAU—Boake Carter

- WEEI—News Flashes; Market Reports
 WLW—Gau and Roamios
 WNAC—The Russian Artists
 WOR—"Moonbeams"
11:15 P.M.
 NBC—Jack Russell's Orchestra: WEAF WGY WEEI WESH WFI
 CBS—Phil Regantenor: WABC WOKO WAAB WDRS WJAS
 NBC—The Poet Prince; Anthony Frome, tenor: WJZ WRVA WBZ WBZA WBAL KDKA
 WCAU—Ben Greenblatt
11:30 P.M.
 NBC—Enric Madriguera's Orchestra: WEAF WEEI WESH WFI
 CBS—Isham Jones' Orchestra: WABC WDRS WNAC
 NBC—William Scott's Orchestra: WJZ WBZ WBZA WBAL WRVA
 WCAU—Ernie Valle's Orchestra
 WGY—Johnny Johnson's Orchestra
 WLW—Los Amigos
 WOR—Freddy Martin's Orchestra
11:45 P.M.
 KDKA—William Scott's Orchestra (NBC)

- WCAU—Harold Knight's Orchestra
12:00 Mid.
 CBS—Herbie Kay's Orchestra: WCAU
 NBC—Cab Calloway's Orchestra: WEAF WGY WEEI
 CBS—Ozzie Nelson's Orchestra: WABC WOKO WNAC WJAS
 NBC—George Olsen's Orchestra: WJZ WBZ WBZA
 KDKA—Marty Gregor's Orchestra
 WLW—Joe Chromis' Orchestra
 WOR—Don Bestor's Orchestra
12:15 A.M.
 WLW—Stan Stanley's Orchestra
12:30 A.M.
 NBC—Jack Denny's Orchestra: WEAF WEEI WGY
 CBS—Abe Lyman's Orchestra: WABC WOKO WNAC WCAU
 NBC—Dancing in the Twin Cities: WJZ WBZ WBZA
 KDKA—Jack Bruce's Orchestra
1:00 A.M.
 CBS—Enoch Light's Orchestra: WABC

SEASON'S GREETINGS
 JEANNIE LANG

BEST WISHES
 for the New Year
 FRANCES LANGFORD

MERRY CHRISTMAS
 from
 SKIPPY and SOOKY

Merry Christmas
 Folks!
 Betty Barthell
 CBS

CHRISTMAS GREETINGS
 From
 HIMAN GROWN
 Author - Producer - Director
 LITTLE ITALY
 Tues. & Thurs.
 6:45 P. M.—CBS
 MARIE, THE
 LITTLE PRINCESS
 Tues., Thurs., Fri.
 1 P. M.—CBS

O'Keefe and Shutta 8:00 P.M. NBC

Phil Baker 9:30 P.M. NBC

(FRIDAY CONTINUED)

7:45 P.M.

NBC—Morton Bowe, tenor: WJZ WBZ WBZA
NBC—The Goldbergs, comedy sketch: WEA
WEEI WESH WLIT WGY
CBS—Boake Carter, news: WABC WNAC WCAU
WJAS
NBC—Morton Bowe, tenor: WJZ WBAL
WLW—Red Davis, sketch
WOR—"Musical Fashion Plates," starring Jack
Arthur, vocalist; Audrey Marsh, vocalist;
Bill Armand, guitarist; Pauline Alpert pian-
ist
WRVA—Tarzan of the Apes, sketch

8:00 P.M.

NBC—Concert; Jessica Dragonette, soprano;
quartet; piano duo; orchestra: WEA WTIC
WGY WEEI WESH WLIT WRVA
CBS—Phil Ducey, Frank Luther and Jack Parker
with Vivien Ruth, vocalists: WABC WNAC
WDRS
NBC—Ethel Shutta, Walter O'Keefe and Don Bes-
tor's Orchestra: WJZ WBAL WBZ WBZA
KDKA
WCAU—Blanche Calloway's Orchestra
WLW—Three Moods in Blue; Franklin Bens; Or-
chestra
WOR—"Detectives Black and Blue", mystery
drama

8:15 P.M.

CBS—Edwin C. Hill, "The Human Side of the
News:" WABC WOKO WNAC WDRS WCAU
WJAS
WLW—Smilin' Ed McConnell, songs
WOR—"The Loafers," Billy Jones and Ernie
Hare

8:30 P.M.

CBS—The March of Time, dramatized news
events: WABC WOKO WNAC WDRS WCAU
WJAS
NBC—Dangerous Paradise, dramatic sketch:
WJZ WBAL WBZ WBZA KDKA WLW
WGY—WGY Farm Forum
WOR—Maverick Jim Dramas

8:45 P.M.

NBC—Red Davis, dramatic sketch: WJZ WBAL
WBZ WBZA KDKA

9:00 P.M.

NBC—Waltz Time; Frank Munn, tenor; Abe
Lynan's Orchestra: WEA WEEI WESH
WLIT WGY
CBS—Philadelphia Orchestra, Leopold Stokowski,
conductor: WABC WOKO WNAC WDRS
WCAU WJAS
NBC—Let's Listen to Harris, Phil Harris' Or-
chestra with Leah Ray, blues singer: WJZ
WBZ WBZA KDKA WBAL
WRVA—Hawaiians
WOR—"The Talk of the Town", revue of music,

9:15 P.M.

CBS—Alexander Woolcott, The Town Crier:
WABC WOKO WNAC WDRS WCAU
WRVA—Modernaires

9:30 P.M.

NBC—Lee Wiley, songs; Victor Young's Orches-
tra: WEA WLIT WESH WGY WTIC
CBS—Melodic Strings: WABC WOKO WNAC
WDRS WCAU
NBC—Phil Baker, comedian, orchestra and vocal-
ist: WJZ WBAL WBZ WBZA KDKA WRVA
WEEI—Fur Program
WLW—Unsolved Mysteries

10:00 P.M.

NBC—First Nighter, dramatic sketch: WEA
WEEI WTIC WESH WLIT WGY WRVA
CBS—Olsen and Johnson, comedians; Harry
Sosnik's Orchestra: WABC WOKO WNAC
WDRS WCAU
NBC—Symphonic Concert; Frank Simon, Con-
ductor: WJZ WBAL WBZ WBZA KDKA
WLW
WEEI—Weather, Road and Fishing Forecasts
WOR—Teddy Bergman, comedian; Betty Queen,
contralto, The Rondoliers, quartet

10:15 P.M.

WOR—Harlan Eugene Read

10:30 P.M.

CBS—Columbia News Service: WABC WOKO
WAAB WDRS WJAS
NBC—Lum and Abner's Oldtime Friday Night
Sociable: WEA WLIT WGY WLW WTIC
WESH WEEI
NBC—Mario Cozzi, baritone; orchestra: WJZ
WBAL
KDKA—Samuel Di Primio, tenor
WBZ-WBZA—Joe Rines' Orchestra
WCAU—Ernie Valle's Orchestra
WNAC—Nick Parkyakakas, "Greek Orator"
WOR—The Milban String Trio
WRVA—Domino Lady and Orchestra

10:45 P.M.

CBS—Gladys Rice, soprano; Concert Orchestra:
WABC WOKO WAAB WDRS WCAU WJAS
KDKA—Teat Club; Jack Bruce
WBZ-WBZA—News
WNAC—News Flashes; Weather



ROSALIE WOLFE

This popular soprano and the only American
singer who has sung the prima donna roles
in all fourteen of the Gilbert and Sullivan
comic operas, is now heard regularly every
Friday at 12 noon EST over an NBC-WJZ
network in her own program of romantic
songs.

11:00 P.M.

NBC—Talk by John Erskine: WEA WGY
WESH
CBS—Gladys Rice, soprano; Orchestra: WABC
NBC—Three Scamps, harmony trio: WJZ WBAL
KDKA—Sports and News
WBZ-WBZA—Weather; Temperature; Sports
WCAU—Boake Carter, talk
WEEI—News Flashes; Weather Reports
WLW—Chorus and Orchestral Selections
WNAC—Huston Ray's Orchestra
WOR—"Moonbeams"
WRVA—Dance Orchestra

11:15 P.M.

NBC—Phil Harris' Orchestra: WEA WEEI
CBS—Boswell Sisters: WABC WOKO WAAB
WCAU WDRS WJAS
NBC—Stars of the Winter; Dr. Robert H.
Baker: WJZ KDKA WBAL
WBZ-WBZA—Kay Fayre, soloist
WGY—Meyer Davis' Orchestra (NBC)

11:30 P.M.

NBC—Jack Denny's Orchestra: WEA WRVA
WTIC WEEI WESH
CBS—Isham Jones' Orchestra: WABC WNAC
WDRS WCAU
NBC—Freddie Martin's Orchestra: WJZ WBAL
KDKA—Ernie Holst's Orchestra
WBZ-WBZA—Milton Ebbins' Ambassadors
WGY—Larry Funk's Orchestra
WLW—Stan Stanley's Orchestra
WOR—Ozzie Nelson's Orchestra

11:45 P.M.

WCAU—Herb Gordon's Orchestra
WLW—Joe Chromis' Orchestra
WOKO—Isham Jones Orchestra (CBS)

12:00 Mid.

NBC—Ralph Kirbery, the Dream Singer: WEA
WGY WTIC WEEI
CBS—Little Jack Little's Orchestra: WABC
WOKO WNAC WCAU WJAS
NBC—Cab Calloway's Orchestra: WJZ WBZ
WBZA WLW WBAL
KDKA—Marty Gregor's Orchestra
WOR—Eddie Lane's Orchestra

12:05 A.M.

NBC—Ted Weems' Orchestra: WEA WGY WTIC
WEEI

12:15 A.M.

WGY—Emerson Gill's Orchestra

12:30 A.M.

CBS—Henry Busse's Orchestra: WCAU
NBC—Harry Sosnik's Orchestra: WEA WTIC
WEEI
CBS—Leon Belasco's Orchestra: WABC WOKO
WNAC
NBC—Eddie Elkins' Orchestra: WJZ WBZ WBZA
KDKA—Jack Bruce's Orchestra

1:00 A.M.

CBS—Don Redman's Orchestra: WABC

SEASON'S GREETINGS

From

Ferde Grofe

ATTENTION: FAN CLUBS

Letters and requests for a presentation of facts about fan clubs
continue to pour into RADIO GUIDE. These communications are
so insistent that RADIO GUIDE has been prompted to organize a
survey of the field with a view, first, to exposure of any improper
activities that may be current and, second, to the establishment of
a department for fan clubs.

Presidents of fan clubs which are being operated legitimately
as an outlet for enthusiasm over a particular artist are invited to
fill out the coupon-questionnaire printed herewith and mail it to
Radio Fan Club Editor, RADIO GUIDE, 423 Plymouth Court,
Chicago. Those clubs which qualify will be eligible to submit
news and notices for inclusion in the new department if and when
it is instituted.

Radio Fan Club Questionnaire

Radio Fan Club Editor,
RADIO GUIDE,
423 Plymouth Court,
Chicago, Ill.

On behalf of the _____
Fan Club, I submit the following information, for the purpose of obtaining
the right to participate in the Radio Fan Club department of RADIO GUIDE:

1. Is your club recognized by the artist to whom its activities are dedicated?

2. How many members has your club? _____
3. Do you collect dues in any form? _____
4. Do you sell photographs, subscriptions to a club publication or solicit
money from members for any purpose? _____
5. Give a brief summary of your club's history and activities. _____

6. List the names and addresses of your officers.

Will you furnish, upon request, a mailing list of your membership so
that we may notify your members of this new department in RADIO GUIDE?

Your name and title _____

Name of club _____

Your address _____

Address of club headquarters if it differs from your own

MORNING

8:00 A.M. NBC—Radio City Organ; Richard Leibert, organist; WEAF WFI WGY WCSH CBS—Salon Musicale; Vincent Sorey, conductor; WABC WCAU NBC—Morning Devotions; WJZ WBAL KDKA WBZ WBZA WNAC—Shopping Around the Town WOR—Freddy Farber and Edith Handman, Variety Act 8:15 A.M. NBC—Don Hall Trio; WJZ WBAL KDKA WBZ WBZA WCSH—Morning Devotions WEEL—Organ Rhapsody (NBC) WOR—Al Woods, Songs and Patter 8:30 A.M. NBC—Cheerio; Inspirational Talk and Music; WEAF WEEL WCSH WGY WTIC WFI NBC—Lew White, organist; WJZ WBAL KDKA WBZ WBZA WOR—Sherman Keene's Orchestra 8:45 A.M. CBS—The Ambassadors; WABC WCAU WOR—Dogs' Tales, Richard Meaney 9:00 A.M. NBC—Morning Glories; Dance Orchestra; WEAF WGY WLIT CBS—In the Luxembourg Gardens; Vincent Sorey, conducting; WABC WOKO WNAC WDRC WCAU WJAS NBC—The Breakfast Club; WJZ WBAL KDKA WBZ-WBZA—Virginia Reade, talk WCSH—Trade Review WEEL—Clothes Institute WOR—The Story Teller's House 9:15 A.M. NBC—Landt Trio and White, songs and comedy; WEAF WEEL WCSH WLIT WGY WBZ-WBZA—Breakfast Club, orchestra (NBC) WCAU—Words and Music WOR—The Chinaberry Children's Program 9:30 A.M. NBC—Bradley Kincaid, the Mountain Boy; hill-billy songs; WEAF WEEL WCSH WGY WTIC KDKA—Style and Shopping Service WOR—Miss Kath'rine 'n' Calliope, Sales Talk WRVA—Thalhimers' Children Hour 9:45 A.M. CBS—The Meistersingers; WABC WNAC WCAU WOKO WJAS NBC—The Wife Saver, Alan Prescott; WEAF WEEL WCSH WGY WTIC KDKA—News; Work A Day Thoughts WOR—WOR Ensemble 10:00 A.M. NBC—Breen and de Rose, vocal and instrumental duo; WEAF WEEL WGY WFI WCSH CBS—Frank Winegar's Orchestra; WABC WAAB WCAU WJAS NBC—Edward MacHugh, the Gospel Singer; WJZ KDKA WBAL WBZ-WBZA—Home Forum Cooking School WNAC—Buddy Clark, soloist WOR—The Children's Hour 10:15 A.M. NBC—Morning Parade, variety musicale; WEAF WEEL WCSH WFI NBC—Singing Strings, string ensemble; WJZ WBAL WBZ WBZA KDKA—Home Forum WGY—Georgia Wildcats WNAC—The Yankee Mixed Quartet 10:30 A.M. CBS—Adventures of Helen and Mary, children's program; WABC WOKO WAAB WDRC WCAU WRVA—Mickey Mouse Club KDKA—Singing Strings (NBC) WBZ-WBZA—Singing Strings (NBC) WEEL—Bob Emery's Gang WGY—Morning Parade (NBC) WNAC—Jane and John, dramatization WTIC—Morning Parade (NBC) 10:45 A.M. NBC—Littlest Girl, Billie Allen Hoff; WJZ WBAL KDKA WBZ WBZA WCSH—State Public Health Talk WNAC—Little Journeys in Music 11:00 A.M. NBC—Alma Schirmer, pianist; WEAF CBS—Cheer Up; WABC WOKO WCAU WDRC WNAC WJAS NBC—Four Southern Singers; WJZ WBAL WBZ WBZA KDKA NBC—Galaxy of Stars; WLIT WGY WCSH—Food Hour WEEL—Food Institute WOR—What to Eat and Why, C. Houston Goudiss 11:15 A.M. NBC—The Vass Family, Seven South Carolina children singing harmony; WEAF WLIT WGY NBC—Spanish Idylls, string ensemble; WJZ WBAL KDKA—KDKA Kiddies Club WBZ-WBZA—Massachusetts Federation of Women's Clubs WEEL—News Dispatches 11:30 A.M. CBS—Concert Miniatures; Crane Calder, bass; WABC WOKO WDRC WCAU WNAC

AFTERNOON

NBC—Sonata Recital; Joseph Stopak, violin; Josef Houti, pianist; WEAF WCSH WLIT WGY—Children's Theater of the Air WOR—Ann Stevens' Thrift Hour 11:45 A.M. NBC—Organ Melodies; Eddie Fitch, organist; Mary Steele, songs; WJZ WBAL KDKA WBZ-WBZA—Adventuring with Postage Stamps WJAS—Concert Miniature (CBS) WNAC—Store News; News Flashes WOR—Andrew Baxter, Jr., baritone and Orchestra 12:00 Noon NBC—Down Lovers' Lane, soprano; piano team; narrator; WEAF WTIC WEEL WGY WCSH CBS—Vincent Travers' Orchestra; WABC WCAU WDRC WNAC WJAS KDKA—Piano Classique WBZ-WBZA—News, Ernest Beaufort WOR—Judge Levy, "Children of Today" 12:15 P.M. NBC—Genia Fonarjova, Mezzo-Soprano; WJZ WBAL KDKA WBZ-WBZA—Weather; Temperature; Four H Club WCSH—Farm Flashes; Stocks and Weather WGY—Skip, Step and Happiana, songs WOKO—Vincent Travers' Orchestra (CBS) WOR—New York Junior League Clothing Appeal 12:20 P.M. WOR—Scout News 12:30 P.M. NBC—American Legion National Trade Revival Campaign; WEAF CBS—News Flashes; WABC WOKO WNAC WDRC WCAU WJAS NBC—National Farm and Home Hour; Guest Speakers; Orchestra; WJZ WBAL WBZ WBZA KDKA WEEL—Del, Jack and Ray WGY—Farm Program WGR—Huger Elliot, Metropolitan Museum: "A Roman Portrait" WOR—Huezer Elliott, "An Egyptian Reformer" 12:35 P.M. CBS—NRA Talk; WABC WOKO WDRC WNAC—The Shoppers' Exchange WCAU—Noontimers 12:45 P.M. NBC—Rex Battle's Ensemble; WEAF WCSH—School Librarian WOR—Stamp Club, Sig. Rothschild, speaker 12:55 P.M. WCAU—Albert Bartlett WOR—Albert Bartlett, the Tango King 1:00 P.M. CBS—Mischa Raguinsky's Ensemble; WABC WOKO WDRC WCAU—Try Out Hour WGY—News and Market Reports WOR—Musical Revue 1:15 P.M. NBC—Ed Kirkaby's Orchestra; WEAF WGY WFI 1:30 P.M. NBC—Rex Battle's Concert Ensemble; WEAF WTIC WGY WEEL WFI CBS—Henry T. Rainey, Speaker; National Student Federation; WABC WOKO WAAB WCAU WDRC WNAC WJAS NBC—Vic and Sade; WJZ WBAL WBZ WBZA KDKA—Ernie Holst's Orchestra WOR—Rosalind Genet, books 1:45 P.M. NBC—Smack Out, comedy duo; WJZ WBZ WBZA WBAL WOR—Freddy Farber and Edith Handman Variety Act 2:00 P.M. NBC—Metropolitan Opera; Mignon; WEAF WCSH WLIT WFI WTIC NBC—Dan Russo's Orchestra; WJZ WBZ WBZA KDKA WBAL 2:15 P.M. CBS—Artists' Recital; WABC WOKO WDRC WCAU WJAS WOR—Jazz Gazette 2:30 P.M. CBS—Dancing Echoes; WABC WOKO WAAB WDRC WCAU WNAC WJAS NBC—Concert Echoes, Joseph Gallicchio's Orchestra; WJZ WBAL WBZ WBZA KDKA WOR—Milton Kaye, pianist 2:45 P.M. WOR—Louise Bave, soprano; Orchestra 3:00 P.M. CBS—Round Towners' Quartet; WABC WOKO WAAB WCAU WDRC WJAS NBC—Words and Music, Harvey Hays, narrator; vocalists; string ensemble; WJZ WBZ WBZA KDKA WBAL WOR—Elizabeth McShane, "Fashions" 3:15 P.M. WOR—Show Boat Boys 3:30 P.M. CBS—Ann Leaf at the Organ; WABC WOKO WAAB WDRC WCAU WNAC WJAS

NBC—Wealth of Harmony, concert orchestra; WJZ WBZ WBZA KDKA WBAL WOR—Allan Broms, Naturalist 3:45 P.M. WOR—Byron Holiday, baritone; Orchestra 4:00 P.M. CBS—Saturday Syncopator; Orchestra; WABC WOKO WCAU WNAC WDRC WJAS NBC—Dance Master; Orchestra; WJZ WBAL WBZ WBZA KDKA WEEL—News Flashes WOR—Dr. H. I. Strandhagen; "What's Beneath the Skin" 4:15 P.M. WOR—The Melody Singer, tenor 4:30 P.M. CBS—News Flashes; WABC WOKO WNAC WDRC WCAU WJAS NBC—Concert Favorites, Joseph Gallicchio's Orchestra; WJZ WBAL WBZ WBZA KDKA WOR—Ernie Kriekett's Orchestra 4:35 P.M. CBS—Madison Ensemble; WABC WDRC WOKO WNAC WJAS WCAU—Tea Dansante 4:45 P.M. WOR—Ernie Kriekett's Orchestra 5:00 P.M. NBC—The Lady Next Door, children's program; WEAF WEEL WGY WCSH CBS—Eddie Duchin's Orchestra; WABC WOKO WAAB WDRC WCAU WJAS NBC—Ward and Muzzy, piano duo; WJZ WBAL KDKA WNAC—Five O'Clock Revue 5:05 P.M. WOR—Program Resume 5:15 P.M. NBC—Babes in Hollywood, dramatic sketch; WJZ WBAL CBS—On the Air Tonight; WABC WRVA—Cecil and Sally, skit KDKA—Bobby and Sue; Helen Irwin WBZ-WBZA—News, Henry Edison Williams WOR—"The Flying Family," Dramatic Sketch; Colonel George R. Hutchinson; Mrs. Blanche Hutchinson; Kathryn, and Janet Lee WRVA—Cecil and Sally; Highway Reports 5:20 P.M. CBS—Eddie Duchin's Orchestra; WABC 5:25 P.M. WRVA—Highway Reports 5:30 P.M. NBC—Three Scamps, male trio; WEAF WEEL WCSH WRVA CBS—Jack Armstrong, All American Boy; WABC WOKO WNAC WDRC WCAU WJAS NBC—Neil Sisters, harmony trio; WJZ WBAL WBZ WBZA KDKA—A. Recreo, Bill and Alex WGY—Three School Maids WOR—Just Pals; talk 5:45 P.M. NBC—Roxanne Wallace, songs; WEAF WEEL WCSH CBS—Reis and Dunn, comedy and songs; WABC WCAU WDRC WJAS NBC—Little Orphan Annie; WJZ WBAL WBZ WBZA KDKA WRVA 6:00 P.M. NBC—Xavier Cugat's Orchestra; WEAF CBS—"Meet the Artist," Bob Taplinger Interviews Radio Stars; WABC WOKO WAAB WDRC WCAU WJAS NBC—Trio Romaine; WJZ WBAL KDKA—News, Pat Haley WBZ-WBZA—Duke Dewey and His Hickory Nuts WCSH—Dance Marathon WEEL—The Evening Tattler WGY—Evening Brevities WLW—Jack Armstrong, sketch WNAC—News Flashes; Weather WOR—Uncle Don, kiddies' program WRVA—Sports Reporter; Hi Plane Pilots 6:15 P.M. CBS—Mildred Bailey, songs; WABC WOKO WAAB WDRC WCAU WJAS WBZ WBZA NBC—O'Leary's Irish Minstrels; WJZ WBAL KDKA WBZ WBZA WCSH—Al Buck's Sports Review WGY—Sports Parade with Jim Healey WLW—Joe Emerson, songs, orchestra WNAC—The Motor Parade 6:30 P.M. CBS—George Hall's Orchestra; WABC WOKO WDRC WCAU WAAB NBC—Mary Small, juvenile singer; WJZ WBAL KDKA WBZ-WBZA—Weather; Sports; News WCSH—Randall and MacAllister Program WEEL—News Flashes WGY—Ma Frasier's Boarding House WLW—Bob Newhall, Mail Pouch Sportsman WNAC—The Merry-Go-Round WRVA—News Reporter 6:45 P.M. CBS—George Scherban's Ensemble; WDRC NBC—Half Hour for Men with J. C. Nugent; male quartet; WEAF WEEL WCSH WGY

NIGHT

CBS—Ye Happy Minstrel and Tiny Baud; WABC WNAC WCAU NBC—Flying with Captain Al Williams; WJZ WBAL KDKA WBZ-WBZA—Program Preview WLW—R. F. D. Hour WRVA—Interlude 6:50 P.M. WOR—True Story Program featuring Mabel Runions 7:00 P.M. CBS—Frederic William Wile, the Political Situation in Washington; WABC WOKO WDRC WCAU WJAS NBC—John Herrick, baritone; WJZ KDKA—Ernie Holst's Orchestra WBZ-WBZA—Concert; Edward MacHugh, baritone; James J. O'Hara, organist WNAC—Dramatization WOR—Ford Frick, Sports Resume WRVA—Cross Roads Symphony 7:15 P.M. NBC—Religion in the News, Dr. Stanley High; WEAF CBS—Tito Guizar, Mexican tenor; WABC WCAU WOKO WDRC WAAB WJAS NBC—Robin Hood, Dramatic Sketch; WJZ WBZ WBZA WBAL WCSH—Wayside Philosopher WGY—The Municipal Series WEEL—After Dinner Revue WNAC—The Old Apothecary WOR—Bill Brown, "How's Your Golf?" 7:30 P.M. NBC—Circus Days, dramatic sketch; WEAF WFI WEEL WCSH WGY WLW CBS—Elder Michaux's Orchestra; WABC WOKO WNAC WDRC WCAU WJAS NBC—Variety Program, Soloists and Orchestra; WJZ WBAL WRVA KDKA WBZ-WBZA—The World in Review, Radio News Reel WOR—Everett McCooey, baritone 7:45 P.M. NBC—Mountaineers, hillbilly songs and sketch; WEAF WEEL WBZ-WBZA—Tessie the Typist, skit WCSH—Willis B. Hall WGY—Johnny Johnson's Orchestra WLW—Transmitter Talk WNAC—The Old Apothecary WOR—Harry Hershfield WRVA—To be announced 8:00 P.M. NBC—George Olsen's Orchestra; WEAF WEEL WCSH CBS—Isham Jones' Orchestra; WABC WOKO WNAC WDRC WJAS NBC—Economics in the New Deal; speakers; WJZ WBZ WBZA KDKA WBAL WLW—The Big Show WOR—Little Symphony Orchestra, Philip James, conducting; Soloist: Lucile Collette, Violiniste-Pianiste WRVA—Tampa Revelers 8:30 P.M. NBC—One Hour With You; Orchestra and Soloists; WEAF WCSH WGY WFI WRVA CBS—George Jessel, comedy; Edith Murray, songs; Freddie Rich's Orchestra; WABC WOKO WNAC WDRC WCAU WJAS NBC—Boston Symphony Orchestra; Serge Koussevitzky, conductor; WJZ WBAL KDKA WBZ-WBZA—Guardsmen, quartet 8:45 P.M. WBZ-WBZA—New England Community Singing Club, direction Gil Hamlin WGY—Utica Singers; Marion Williams, soprano; Rogers Sweet, tenor WEEL—Magazine of the Air 9:00 P.M. CBS—Philadelphia Orchestra, Leopold Stokowski, conductor; WABC WOKO WNAC WDRC WCAU WJAS WBZ-WBZA—New England Conservatory of Music Orchestra WOR—Don Bestor's Orchestra 9:15 P.M. CBS—Stoopnagle and Budd; Vera Van; Jacques Renard's Orchestra; WABC WOKO WNAC WCAU WDRC WJAS 9:30 P.M. NBC—Leo Reisman's Orchestra; Yacht Club Boys; Vivien Ruth, songs; WEAF WEEL WCSH WFI WGY CBS—Edward D'Anna's Band; WABC WAAB WCAU WJAS WLW—Tunes of Yesterday WNAC—Jacques Fischer's Orchestra; Bette Brooks, contralto WOR—Bronx Marriage Bureau WRVA—Boston Symphony Orchestra (NBC) 9:45 P.M. WLW—Over the Rhine WOR—Robert McGimsey, Versatile Whistler 10:00 P.M. NBC—Saturday Night Dancing Party with B. A. Rolfe's Orchestra; WEAF WEEL WCSH WFI WGY WLW WRVA CBS—Broadcast from Byrd Expedition; WABC WOKO WNAC WCAU WDRC WJAS KDKA—Behind the Law

Barn Dance

11:00 P.M.
NBC

(SATURDAY CONTINUED)

10:15 P.M.

NBC—The Master Singers, chorus: WJZ WBAL
KDKA—Ernie Holst's Orchestra
WOR—The Tollefn Wier Two-Piano Recital

10:30 P.M.

CBS—Columbia News Service: WABC WAAB
WDRG WJAS
NBC—Cuckoo Program: WJZ WBAL
WCAU—Blanche Calloway's Orchestra
WNAC—Over the Cameraman's Shoulder
WBZ-WBZA—News
WOR—Emil Velasco, organist

10:45 P.M.

CBS—Leaders in Action, H. V. Kaltenborn:
WABC WOKO WAAB WDRG WCAU WJAS
KDKA—News and Sports
WBZ-WBZA—Weather Temperature; Sports; News
WNAC—News Flashes; Weather

11:00 P.M.

NBC—One Man's Family, dramatic sketch: WEAF
WCSH WGY WEEI WFI
CBS—Glen Gray's Orchestra: WABC WDRG
WOKO WAAB WCAU WJAS
NBC—WLS Barn Dance: WJZ WBZ WBZA
WLW WBAL KDKA
WNAC—Huston Ray's Orchestra
WOR—The Theater of the Air: Orchestra direct-
ed by Leo Freundberg; Milton Kaye, M. C.
and Artists
WRVA—Fiddling Fiddlers

11:30 P.M.

NBC—Hollywood on the Air; Orchestra; Soloists;
Guest Stars: WEAF WFI
CBS—Abe Lyman's Orchestra: WABC WOKO
WDRG WNAC WCAU
WEEI—News Flashes; Market Reports
WOR—Paul Tremaine's Orchestra

12:00 Mid.

NBC—Carefree Carnival, variety show: Meredith
Wilson's Orchestra: WEAF WFI WEEI
CBS—Little Jack Little's Orchestra: WABC
WOKO WNAC WCAU
NBC—Freddie Martin's Orchestra: WJZ WBZ
WBZA
KDKA—Messages to Far North
WGY—Larry Funk's Orchestra

JAMES MELTON

Long absent from ether waves, Jimmie will sing to you once more on Monday, December 25, at 9 p. m. EST over an NBC-WEAF network, as star of the Harry Horlick Gypsies.

WLW—Joe Chromis' Orchestra
WOR—Sam Robbins' Orchestra

12:30 A.M.

CBS—Gus Arnheim's Orchestra: WABC WOKO
WNAC WCAU

NBC—William Scott's Orchestra: WJZ WBZ
WBZA

KDKA—Marty Gregor's Orchestra
WGY—Emerson Gill's Orchestra

12:45 A.M.

KDKA—Tent Club; Jack Bruce

WHY MABEL WENT WEST

(Continued from Page 2)

her own voice. She stopped the show and was a singer from that time on. Since then she has appeared in one picture, "Gang War," played with Jimmy Durante in New York and appeared in vaudeville.

But the irrepresible versatility of the woman has been a blessing not unmixed. She was a wov in comedy roles, so they wouldn't let her do anything serious. Always taking different roles, she never has had a chance to establish herself in any one of them.

Even her appearance on the Baker show was in the nature of an accident. She was visiting Peggy Cartwright (Mrs. Phil Baker) last summer at the time when Phil was auditioning actresses for his show. None seemed to possess the required versatility, and finally Mrs. Baker suggested that Mabel try it. She did, and she's been on the program every

week for six months now, doing a different role each week.

Here at last it would seem was a role to which the experience of Mabel Albertson was peculiarly, even uniquely adapted. The versatile actress who had done everything had an opportunity to do just that over a nation-wide hookup, with the greatest audience of her career in figurative attendance. A few listeners objected to the introduction of a woman into Baker's skits, but long ago they were all won over. Now they're enthusiastic backers. Why the woman can even sing in Russian or French when necessary. Yes, a swell actress in a role that gives her the greatest opportunity for the display of her versatility, it would seem.

Did the man say versatility? The word is anathema to Mabel.

And some day, she vows by all that's holy, she'll play Juliet, and it won't be a comic impersonation, either.

Taking BROADWAY Out of GAGS

(Continued from Page 2)

one ear which is glued to the loudspeaker.

Take it from this darn fool—the jokes are becoming more anaemic every day and a blood transfusion is necessary unless some human note—some homey comedy—is brought to the air on a comedian's program. Unless the comics stop catering to that handful of listeners—the typical first night Broadway audience—and give some real thought to the millions of people east, west, north and south of the corner of Forty-second Street and Broadway, they are gonig to kill the goose that laid the golden gag.

Amos and Andy have been going along for quite a few years, night in and night out, and I venture to say that they have

made and held more friends and listeners than any other attraction on the air. The answer? They tell no jokes. They have that human quality which gets under your skin and stays there.

You and you and you, Mister So-Called Wiseacre in the big city, may turn up your nose at Amos and Andy but there are millions of people throughout the land who turn their dials toward them religiously every night.

Comedians, take notice! FOR SALE—One joke book, a wealth of material for announcer and funny man. Or will exchange for one line, such as: "What's the use of my running? After all, the President of today is the postage stamp of tomorrow."

HELP IMPROVE RADIO PROGRAMS!

RADIO GUIDE wants the honest opinions of listeners everywhere about the entertainment value of important sponsored programs on the networks. Fan mail is an uncertain guide because, with few exceptions, the people who do not like a program do not write to the sponsors or the stations. The sponsors and the broadcasting companies are doing their best to give you the kind of programs that you want but, in many cases, they are shooting in the dark because they do not know what you prefer in the way of entertainment.

RADIO GUIDE is now carrying on a campaign to improve radio programs by obtaining first-hand information for sponsors about your reactions to their presentations. You

have a very definite opinion about every programs to which you listen regularly. You have expressed it many times to your own family and

friends. But the editors of RADIO GUIDE cannot meet you in your living room and talk it over with you. They must depend upon you to sit

down and write your honest opinion about a certain sponsored network program each week — why you like or dislike it and your suggestion for improving its entertainment value.

Each week, RADIO GUIDE will select a sponsored network program upon which you will be asked to comment. In an adjoining column you will find the rules of the contest and a summary of the prizes which you can win.

Remember, literary ability will not influence the decisions of the editors, who will act as judges in the contest. Not the manner in which you express yourself but the value of your ideas is the important thing. Tell your friends to enter the contest, too.

This Week:
TELL US WHETHER YOU LIKE OR
DISLIKE THIS PROGRAM AND WHY
Bing Crosby Program

Bing Crosby, baritone; Lennie Hayton's Orchestra; and guest stars, broadcast Mondays at 8:30 p. m. EST, 7:30 p. m. CST, over CBS-WABC network.

Send in Your Criticism Today →

WIN \$50 WEEKLY

FIRST PRIZE . . \$25

SECOND PRIZE . \$10

and three prizes of \$5 each

CONTEST RULES

1. Letters must be written in ink or typewriter on one side of the paper only and must not exceed 200 words in length.
2. Everyone is eligible except employees of Radio-Guide or members of their families.
3. Each letter must be accompanied by the entry blank printed at right or your tracing of the same.
4. You may consult copies of Radio Guide at the offices of this publication or at public libraries. You do not have to purchase

5. Radio Guide to enter the contest.
5. The editors of Radio Guide shall be the judges in each weekly contest and their decision shall be final in each instance.
6. All letters regarding the "BING CROSBY PROGRAM" must be in the office of Radio Guide on or before Saturday, January 6, to be eligible. Awards will be announced in the issue of the week ending January 27, on sale January 18.
7. Address all entries to BETTER RADIO CONTEST, Radio Guide, 423 Plymouth Court, Chicago, Ill.
8. Radio Guide reserves the right to publish any or all letters submitted.
9. We cannot enter into any correspondence regarding the contest, and no manuscript can be returned.



BING CROSBY

(Pin or paste this blank, filled out, to your letter)

ENTRY BLANK No. 12
Radio Guide
Better Radio Program Contest

I have read the rules of this contest and agree to abide by them; and herewith submit my comments.

Name _____

Street and No. _____

City _____ State _____

