

# Radio Guide

The NATIONAL WEEKLY of PROGRAMS and PERSONALITIES

Vol. I - No. II

Baltimore, Md., January 9, 1932

5 Cents

## CRASHED GATE TO FAME

### ALEXANDER GRAY UPSET LEGEND OF ROLLING STONE

Perhaps by way of introducing Alexander Gray, picture star and baritone, who was picked from a large field as soloist for those Chesterfield broadcasts via the Columbia network, it would be the proper thing to start off with "Believe it or not—"

THERE are a lot of "believe-it-or-nots" that go well with the story of Alexander Gray's sudden ascent into the radio firmament. The first one, perhaps, should be, "Believe it or not, but Alexander Gray's selection for the job was an accident."

And whether you want to believe it or leave it, Gray, who did half a dozen pictures, most of them in color, has never seen himself on the screen in an entire picture.

And would you, or could you believe it, he once swabbed the decks of a ship? Before that he milked cows. After that, he was an advertising man. Between times, he was a teacher. At other odd moments he was a carpenter and the thing of which he is least proud, perhaps, is that part of his past when he served as an editor. Added to his versatility are his expert knowledge of industrial engineering, his record as a principal in Mr. Ziegfeld's "Follies" of sometime back; his stage career during which he shared the halo with Marilyn Miller and Bernice Claire and his brief but hectic experience in the high pressure sales of motor trucks.

Admission of all these experiences, coming from anyone else than Alec Gray, would draw from most any one the simple reaction of an arched eyebrow.

But Mr. Gray himself told us all those things and whether you like to challenge "believe-it-or-nots" you can't help but be impressed with Alec Gray's sincerity. As you can see, he's quite a handsome chap. He weighs



Alexander  
Gray



Marilyn  
Miller

165, is five feet, ten-and-a-half inches tall, clean shaven, has flashing blue eyes that were nearly ruined by the movie lights, and his hair is a light brown. All of which qualified him nicely for the role of the "Red Shadow" in "The Desert Song," in which he became a sensation, as they say on Broadway. Later on, we'll tell you about the incident in that play, which became a real sensation. The wide field of endeavor in which Mr. Gray has engaged himself at one time or another is rather a contradiction to the copy books. These books, if you recall, are rather insistent about that popular fancy—"a rolling stone gathers no moss." Alexander has managed quite well to confound the old proverb. And there's another angle to his (Turn to page 15)

COMPLETE PROGRAMS FOR THE WEEK

## THE WALLS HAVE EARS!



Tony Won's new scribbling effort "R Yuh Listening" is out! . . . After having been on the outs for over a year because of some silly reason or other, Abe Lyman and George Olsen, the big kids, got together at the Richman Club, shook hands and are friends again.

With Buddy Rogers all set to be NBC'd, several of our well known ace microphoners are beginning to worry and wonder just how much effect Buddy will have upon their following.

VINCENT LOPEZ

From the present outlook of things, Wrigley, at the end of their present thirteen week contract, will take themselves off the air because their program just didn't click . . . When Art Jarrett schooled at Rutgers, they couldn't even allow him to vocalize with the Glee Club, and now that he's getting some place as a singer, are their ears aching!

Vincent Lopez will be airing his piano tickling over those see-bee-ess air channels before the new year makes itself heard . . . Just as soon as this Louis Armstrong feller comes riding into town, you'll be hearin' singin' that's not only different but get you and him and her!

That red-faced Walter Winchell, whose air gossiping is wrecking homes from here to there, doesn't pipe into Chicago on his Columbia commercial, because the local station out there belongs to Chicago-Tribune interests, which is an opposition rag to the Chicago American, in which Mrs. Winchell's little boy Walter's daily column appears, so while the chatterer chins in New York, all that comes out in Chicago is a studio band, which takes the bows!



Ever since Pancho, the societempo man, was replaced by Leon Belasco at the Embassy Club, which if you'd care to know, caters to only the lads and lassies who reside along New York's Park Avenue, if you please, he is shooting off his mouth and calling everybody such nasty names.

Connie Boswell, according to the medico who is attempting to cure her, says that she'll be able to walk, hop, skip and jump in about a year, which is swell news for our ears.

Al Katz, Cab Calloway, Jimmy Grier, Ted Weems, Jack Pettis, Emerson Gill, Herb Gordon, and Seymour Simons are among the many music-making outfits that will be Lucky Striked . . . Louie Sobol, one of the column scribblers who is finding that it's much easier to talk via a typewriter than through a microphone has something in the winds for a chain hook-up.

Stooges may come and stooges may go, but the vice-presidents go on forever . . . Will Osborne is out of the radio picture, as far as New York is concerned.

That Columbo, Crosby and Vallee tune is causing plenty of headaches for its publishers, since both Vallee and Crosby have asked that their pictures be omitted from the frontpiece of the tune.

Don't ever ask the Mills Brothers to warble the St. Louis Blues for you, they don't know it . . . Cornell, the ailing accordionman, out of the hospital at last, and back on the job, RKOing once more.

Both the Madison Avenue and Fifth Avenue Air Castles will have upheavals right after January, with several of the chair-warmers in both organizations going out!

Wish CBS would give Ben Alley a break . . . And it was Nick Lucas who told of the announcer who led a striking existence, because he's seen them that way, chime after chime.

Martha Boswell has a seven year old son . . . Rudy Vallee will do another picture! . . . When Jack Hylton aired for Luckies, it was three o'clock in the morning over they-ah in England, don't-ch-know.

If this scribbler is any judge of talent at all, Red McKenzie will be the next air attraction that'll keep you tuning in.

New Yorkites will get a pleasant eyeful when they view Paul Whiteman's new woman vocalist, labelled Jane Vance . . . And as you probably know, the King of Jazz will be vaudevilling in early January . . .

Little Jack Little, who did some radioing for the NBC, is making more money RKOing, then he did for his radio work . . .

After having been a loyal member of the en-bee-see for six years, Larry Funk, like many other former 711 airers, got up on his hind legs and told John Royal, and Rapee what he thought of them, their tactics and the NBC factory IN general, with the result, that Larry is outside looking in!

## Dance With Countess d'Orsay



Audrey Marsch

Audrey Marsh, soprano, who as "Countess d'Orsay," brings with her an irresistible continental atmosphere to the "Dance with Countess d'Orsay" programs which are heard every Saturday at 8:30 p. m., over the WLW-NBC network. Other features of the program include "Le Dandy," tenor, Ben Selvin's orchestra and Louis Witten as master of ceremonies.

## THE JEST ARTIST

By GEORGE D. LOTTMAN

It's an interesting philosophy—that of John Seagle's, baritone of the famous Cavalier's quartette, NBC harmonists.

"All you hear on all sides is depression," John declared the other day, and one gets morbid after a while. But as soon as I start feeling sorry for myself, a blind man comes tottering down the street, smiling and whistling. Or a fellow, with a couple of legs missing, rolls along on a home-made contrivance, and doggonit! I HAVE TO GO BACK TO BEING HAPPY AGAIN!"

"How was your broadcast last night?" a friend asked Sherman Keene, one of WOR's very busy music directors, the other day.

"I don't know," replied Sherman, "I haven't had a chance to speak to any of my stooges yet."

Some well-meaning friend told Howard Lanin, society maestro, that a certain radio official didn't like him, shortly before the Campbell broadcast the other night.

With characteristic diffidence, Howard retorted: "Since we've only been acquainted for a year, that means I lived thirty-three years without him. Having done that once, I ought to be able to do it at least twice again, which would take me to the age of 99, and by that time, I probably just won't care."

Al Katz, one of WMCA's hotter maestros, wires to this Jest Artist as follows:

"If Cab Calloway wanted to join a club, and the members didn't want him, do you suppose they'd white-ball him?"

Wire charges, may we further add, were thirty-seven cents.

## RADIOODDITIES

ALICE JOY'S hubby is an ex-R. A. F. Captain, holder of England's Distinguished Flying Cross, and credited with several enemy planes, but it evidently doesn't impress her for she still is adamant in her refusal to leave the ground.

GEORGE OLSEN'S orchestra of 17 pieces is one of the largest dance orchestras on the air. It became famous a few years ago when only a six-piece band, but George constantly added to the versatile aggregation until it reached its present total. Among the six who started it off were Fran Frey, Bob Borger and Bob Rice, the first popular vocal trio to perform with a dance orchestra. All six are still members.

Songbird Kate Smith and Royal Canadian Guy Lombardo started their careers in entertainment in much the same way. Guy, with his brothers Liebert and Carmen, organized a boys' orchestra which played for the Canadian troops near their home town of London, Ontario, in war time, and Kate, a fat girl in pigtails, ventured often to barracks around her Native Washington where she gained the applause of the doughboys for her singing.

RUSS COLUMBO has his own definition of his particular brand of entertainment. He says he "takes a song and reads it musically into the hearts of listeners." There now, it pays to know what you are doing!

## Atwater Kent Audition Winners

Saida Knox, 20 year old contralto of Kearney, N. J., and J. Alden Edkins, 24 year old bass, of Somerville, Mass., were selected as the best amateur singers of the United States during the finals of the fifth annual Atwater Kent Radio Auditions which were held on Sunday December 13 over the WSAI-NBC network at 9:15 P. M. Both winners received \$5,000 in cash and two years tuition in some American conservatory of music.



## World Now Hears Metropolitan Opera

Metropolitan opera for radio fans everywhere is now a feature of the National Broadcasting Company. "Hansel and Gretel" was the first to be heard by a world-wide audience direct from the stage of the Metropolitan Opera House in New York. A two-year contract has been signed for broadcasting from the Metropolitan.

An act from Bellini's "Norma" was presented on Saturday, December 26. On New Year's afternoon "La Boheme," the first Pucini opera ever on the air from an opera house, was relayed in part to the audience. A portion of the Metropolitan premiere of Franz von Suppe's "Donna Juanita," on January 2, completed this group over the WLW-WSAI-NBC network at 2:00 P. M.

Hereafter a weekly series of Saturday afternoon broadcasts from the Metropolitan stage will make portions of scheduled performances regularly available to music lovers here and abroad.

Although the length of most operas prohibits radio presentation in full, all three acts of Humperdinck's "Hansel and Gretel," beloved by children and adults alike were put on the air in the initial broadcast. The gingerbread fantasy was heard on combined networks of the National Broadcasting Company from coast to coast.

All the broadcasts are relayed by short wave to Europe for expected rebroadcast there.

During all of the broadcasts of the present season, Deems Taylor, well known composer, will act as narrator. Seated behind a sound-proof glass partition in the opera house, Taylor serves as the "eyes" of the radio audience, relating the story of the opera, describing the scenery and filling in wherever it is felt that words will increase the dramatic value of the broadcast.

Except for the two figures behind the inconspicuous mixing panel in the box, there is nothing to indicate to the audience that the performance is being broadcast. Microphones are to be distributed in the footlights and wings in such a way that they are not visible and all wiring is carefully hidden.

Deems Taylor was born in New York City in 1885. He went through his elementary studies at the Ethical Culture School and later graduated to New York University. He is a self-taught composer, aside from some lessons in harmony and counterpoint which he received from Oscar Coon.

Taylor first attracted attention as a serious writer in the larger forms, in 1913, when his orchestral composition, won first prize in the National Federation of Music Clubs competition. In the next three years he wrote the "Chambered Nautilus," a cantata. "The Highwayman," cantata. "Through the Looking Glass," a suite; and a "Portrait of a Lady," a rhapsody.

"The King's Henchman" his first opera made its debut at the Metropolitan on February 17, 1927. This opera held the Metropolitan for three years and at the final performance, tickets were unprocurable. A few days later, after the closing, the directors of the Metropolitan, commissioned him to write a second. For this he turned to "Peter Ibbetson." This took place on February 7, 1931, and again Taylor achieved a notable success.

## REVIEWING RADIO

By PORTHOS

It is becoming a toss-up whether the radio production departments or the sponsors' agencies are taking the burdens of showmanship upon their shoulders. The newer programs undoubtedly are so thoroughly dominated by the agencies which buy radio time for advertisers that even a casual listener can easily detect the sacrifice of artistic genius on the altar of commercialism. Agencies are plunging into show business and script departments are being taxed with commercial tasks and this, as you might guess, is a state of affairs to worry about.

It is very much like having the man in the box office of a theater write the play.

An advertising agency is a thing far removed from a playshop or an entertainment factory. Their inroads into the production departments already have weakened many broadcasts, but the worst is yet to come if the broadcasters do not take a firm stand and insist upon creating microphone divertissements. It is practical, of course, for agencies to consult and cooperate with the radio producers, but there, the line should be drawn. It is only logical to suppose that if the agencies continue their domination, they will emerge eventually as the dictators of radio and when that era arrives, the possibilities of creating good-will must vanish, and thus defeat the purpose of the advertiser.

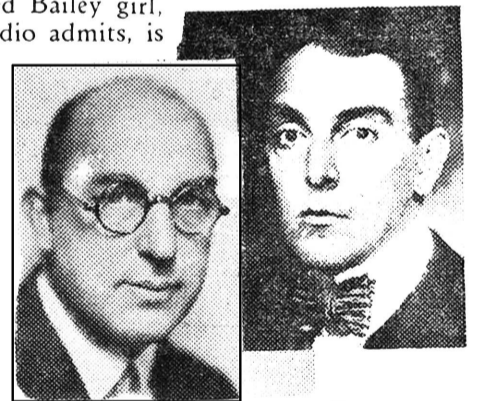
It would be interesting perhaps to know how the NBC officials reacted to the recent return of Ring Lardner to the NBC waves as a guest artist. A long illness had kept him away for months. Mr. Lardner, if you recall, on the evening of his come-back spent a great deal of time joshing about artists, and those of whom he spoke principally, were Columbia entertainers.

I became curious the other day, to know just what it is that characterizes the music of Jacques Renard, maestro of the Camel Quarter Hour orchestra. Its sweetness and purity of tone, and its difference from any other musical unit challenges one. It was difficult to put a finger on the secret.

The answer, as I learned, was, after all, quite simple. Renard has a classical background. He studied under Muck and Hoffman. He toured with Pavlowa, and came back to Boston when the jazz age dawned. I think he was the first man to discover what was wrong with the hectic pulse of jazz, which featured blaring brasses and smothered melody. Renard saw that phrasings and shadings were being neglected; that improvisations had to be written into the score and that musicians were rambling when allowed individual latitude. So Renard began writing arrangements that emphasized melody; divided its facets equally among the instrumentalists; shaded his tones expertly, and phrased his interpretations with the inspiration of a classicist. And to top it all off, he featured strings. His orchestra was no longer "hot" but sweet, and immediately it stood out as distinctive.

What a pity! This Mildred Bailey girl, who, every expert observer of radio admits, is today one of the National Broadcasting Company's best bets, is all but anonymous on those sustaining broadcasts by Paul Whiteman from the Edgewater Beach Hotel. Nothing is ever credited to her—she is just a voice.

But what a voice! And how soon will Whiteman and his associates realize that Bailey is worth millions? Or is she being punished because she raised a fuss sometime back for more money—or a build-up? I have been told that she got neither.



DR. SIGMUND SPAETH

RING LARDNER

Comes to radio the tune detective! Dr. Sigmund Spaeth, inaugurating a novelty on the NBC waves, has set out to add to our education in the matter of discovering where all the modern songs come from. Well, we had known of course that a great percentage of them were purloined from the old masters; that "Yes, We Have No Bananas" is a composite of Handel's "Hallelujah Chorus," "My Bonnie Lies Over the Ocean," "Seeing Nellie Home," etc. But Dr. Spaeth seems to have gone very deeply into his subject, and one wonders how many thousands of song-writers will be embarrassed when he gets around to the present-day ditties and their origin.

There is a popular opinion that the law specifies the number of bars which may be lifted, borrowed or stolen from a musical composition. I don't know whether Dr. Spaeth has gone into this, but I have, and I learn this from Francis Gilbert, who has handled many song-plagiarism suits: "The law is—any appropriation of a substantial portion of a literary or musical work of another constitutes literary or musical piracy."

Mr. Gilbert adds: "You see, everything depends on the court's interpretation of the word 'substantial.' The interpretation varies with different cases. If I wrote a popular song which contains four bars of a symphonic work of yours, I probably have used a mere four bars out of a thousand, so they would not necessarily be a 'substantial' portion of your composition.

"But if I wittingly, or unwittingly use four bars from a thirty-two bar chorus of a popular song you've written, then they may be considered a 'substantial' portion of your creation."

So you see, song or tune stealing may be done unwittingly, or wittingly, and we mustn't be too harsh. It's all very complex.

## The Editor's Mail Box

A column devoted to answers to queries from readers pertaining to radio, radio artists and kindred subjects. Address the Editor's Mail Box, Radio Guide.

**WILLIAM JULIAN**—No, we haven't printed any news about Jim and Bob, the Hawaiian Duo who broadcast from WENR in Chicago over the NBC chain, but thanks for the suggestion.

**MISS A. N. MULLER**—The only address we can give you where a letter would reach Rudy Vallee is The National Broadcasting Company, 711 Fifth Avenue, New York City.

**RADIO GUIDE BOOSTER**—We really haven't asked Fay Webb Vallee about the future generation, and so far as we know, that rumor about Rudy leaving the NBC to go to Toronto is only just a rumor.

**LUCIE BROCOLI**—Joe Cappi and the Hotel Edison orchestra were on the CBS network for a short time, but they are off the air now, and there has been no information given out as to whether or not they will come back to the air waves.

**MRS. G. ZITVER**—The part of Junior on the Raising Junior program, is played by Sallie Belle Cox.

**B. F.**—All of the handsome Lombardo brothers are married.

**DOT CARR**—Gloria Gay and Polly Preston are not on the air at present. Peter Dixon's son is four years old. The baby's cry on that program is only a sound effect.

**MILDRED LEHMKUHL**—Little Jack Little is on the air over the WKRC waves on Mondays at 10:00 p. m. with Guy Lombardo.

**VICTOR MONNER**—Ozzie Nelson can be heard over WOR at least once every week. He has no particular "spot" so watch the program section of the RADIO GUIDE each week to locate him.

**WM. A. MACK**—NBC's "Margie The Steno" is not on the air at present. Neither is CBS's "Daddy and Rollo." Have no information as to whether either will go back on the air.

**BETTY SHIELD**—Madge Lynn, who sang over WOV last year is no longer with the station. Yes, Helen Bourne is her correct name.

**FLORA**—Somebody misinformed you when they told you that the guitar player on the South Sea Islanders program was Andy Sanella. The performers on that program are all native Hawaiians. Yes, they do make phonograph records. For Columbia and Brunswick. You can hear them every once in a while over the NBC stations.

**A RADIO FAN**—Here is some information about your favorite, George Beuchler. He was born on July 29, 1906—has brown eyes and black hair—stands up five feet and eleven inches—and weighs 185 pounds. Your heart is safe for a while yet—he is not married!

## Radio's Lon Chaney



Teddy Bergman probably has more aliases than any man outside of Sing Sing Prison.

One evening last week Teddy sat down and tried to count on his fingers the various roles he has played during the past two years over WKRC-CBS.

From "no tickle, no laundee" Chinaman to "stick-em-up" Greedy Jake, Teddy has totaled 754 different characters during the past two years, which is probably more than any one individual has portrayed during the entire life of the radio industry.

Teddy Bergman is heard on many WKRC-CBS network programs including Blue Coal Radio Revue at 5:30 p. m., on Wednesdays, and the Love Story program on Thursdays at 9:30 p. m.

## Little Jack Little On Robert Burns Program



Little Jack Little, formerly a feature of the NBC, will now be heard on the Robert Burns Panatela broadcast with Guy Lombardo's Orchestra heard over the WKRC-CBS network on Mondays at 10:00 P. M. His deep voice and nimble fingers at the piano will be welcomed by his vast following of radio listeners.

## How They Began

**FRANK PARKER**, tenor; worked way through school jerking sodas at \$15 a week; entered show business as a lark, starting as a dancing juvenile; put into singing role when tenor didn't show up for act; later spotted in two songs in Greenwich Village Follies; toured in own act for Keith's; fell into featured role on radio when another tenor, working two programs, asked him to substitute. Big ambition to be an airplane pilot. Born April 29, 1903, New York City.

**VINCENT LOPEZ**; once was stenog for the president of a milk company for eight dollars a week; studied for the priesthood but couldn't give up music, so left seminary; began career as pianist in a bargain restaurant. Born in Brooklyn, N. Y., on December 30.

**RAY PERKINS**, the Prince of Pineapple, The Old Topper, etc.; as a small boy used to pass the hat for compensation after putting on a song and dance act in New England mountain resorts. Later earned board and room as piano player in movie house. Now seeking fortune as the inventor of square moth balls. Born on August 23.

**ERNO RAPEE** earned his first \$20 a month tutoring the three children of an Hungarian Baron while studying at the Budapest Conservatory of Music. After building a reputation in Europe, adventured as a young man to New York where he was forced to play the piano in an East Side beanery.

## World Famed Roth Quartet Over WOR



The unsurpassed Roth Quartet with Vera Brodsky, pianist, is heard over WOR on Wednesdays at 8:30 p. m. The Quartet is world famous and came to America to perform for the first time in the fall of 1928 when they were invited to play at the noted Coolidge Chamber Music Festival in Pittsfield, Mass.

The invitation to play at the Chamber Music Festival brought the Roth Quartet to America for the first time. They expected to stay for ten days and give four concerts. Instead they stayed five weeks and gave seventeen concerts. This was an unprecedented situation, for the artists although famous in Europe, were entirely unknown and unadvertised in America. Suddenly they found themselves the center of all chamber music interest. A quartet of the first rank they were recognized as such by every music critic in America. Since that time they have visited America each year playing to crowded houses in New York and all other metropoli. They have been featured at all the important music festivals playing at the Library of Congress in Washington in '29, at the Italian Chamber Music Festival in Venice in '30 and at the Mondsee Festival in '31 in connection with the Austro-American Conservatory.

Vera Brodsky

Three members of the Quartet are Hungarian, the fourth a Hollander. Feri Roth, the founder of the group, graduated from the Budapest Academy of Music in 1917, and for three years following held the post of concert master at the Royal Opera House in Budapest. In 1921 he was called to fill the same position at the Grosse Volksoper in Berlin and while there he organized the Quartet. The ensemble is thus the result of ten years of association. In 1926 Mr. Roth was confident that the Quartet was ready to take its place among the best of Europe and a tour throughout the Continent proved him right. Since that time it has played to consistently growing enthusiasm and in the last two years has undisputedly outclassed all other string quartets. To quote Herbert Peyser, New York critic, "There may be greater performances somewhere on earth today but one healthily doubts it."

## Adele Starr With A & P Gypsies

Adele Starr, contralto from the middlewest, is now heard in a series of programs with the A&P Gypsies. Miss Starr, comparatively unknown in the east, has a background of successful stage and concert work. Her voice is particularly facile, lending itself to the variety of melodies as presented by both the Concert Gypsies and Dance Gypsies. Her first appearance was with the A&P Dance Gypsies, on Thursday, December 10, over the WLW-NBC network at 10:00 P. M. In a recent survey by an European music critic as to quality of voice of American women singers, Adele Starr was listed as a singer whose voice, "even in popular and 'blues' songs, is flawless technically and melodically." The A&P Gypsies are heard over the WLW-NBC network on Thursdays at 10:00 P. M., and over the WSAI-NBC network on Mondays at 9:00 P. M. Two years ago this artist was a member of the Major Bowes Capitol Family.



ADELE STARR

# SUNDAY PROGRAMS—JANUARY 3

**8:00 A. M.**  
**WBAL—Tone Pictures NBC**  
**9:00 A. M.**  
**WBAL—Children's Program NBC**  
**WCAO—Land o' Make Believe—Children's Playlet CBS**  
**WFBR—The Balladeers—Quartet with Instrumental Trio NBC**  
**9:30 A. M.**  
**WFBR—Mary Eaton, violinist NBC**  
**9:45 A. M.**  
**WFBR—Musical Bells—Organ**  
**10:00 A. M.**  
**WBAL—String Quartet**  
**WCAO—Columbia Church of the Air CBS**  
**WCBM—Morning Melodies**  
**WFBR—Southland Sketches—Southern Male Quartet with Levee Band NBC**  
**10:30 A. M.**  
**WBAL—Fiddlers Three NBC**  
**WCAO—Community Center Faculty Recital NBC**  
**WCBM—The Watch Tower Program—Judge J. F. Rutherford**  
**WFBR—Clyde Doerr's Saxophone Octet NBC**  
**10:45 A. M.**  
**WBAL—A Song for Today NBC**  
**WCBM—Musical Gems**  
**10:50 P. M.**  
**WCAU—Services of Third Church of Christ, Scientist**  
**11:00 A. M.**  
**WBAL—Russian Singers NBC**  
**WFBR—University Baptist Church Service**  
**WCBM—Westminster Presbyterian Church Services**  
**11:30 A. M.**  
**WBAL—Morning Musicale NBC**  
**12:15 P. M.**  
**WCAO—Voice of St. Louis CBS**  
**WFBR—Gems of Melody NBC**  
**12:30 P. M.**  
**WFBR—Tales of the Emerald Isle—Drama NBC**  
**WBAL—Balkan Mountain Men—Male Chorus NBC**  
**WCAO—International Broadcast CBS**  
**WCBM—Koven's Furniture Musicale**  
**12:45 P. M.**  
**WBAL—The Romany Trail — Elsa Baklor, soprano**  
**WCAO—The Street Singer—Arthur Tracey CBS**  
**1:00 P. M.**  
**WCAO—Uncle Ed and His Family Circle—Songs and Philosophy by Henry Ed Warner**  
**WCBM—Ross Haynes' Plectrum Ensemble**  
**WFBR—Troika Bells NBC**

**5:00 P. M.**  
**WBAL—National Vespers—Dr. Harry Emerson Fosdick NBC**  
**WCAO—Salvadore Santaella's Symphonic Orchestra—records**  
**WCBM—Jehovah's Witnesses**  
**5:30 P. M.**  
**WBAL—Simonize Guardsmen NBC**  
**WCAO—Blue Coal Program—Revue—Mystery—Drama CBS**  
**WCBM—Dick Purcell—Songs**  
**WFBR—General Electric Twilight Program**  
**5:45 P. M.**  
**WCBM—Varieties**  
**6:00 P. M.**  
**WBAL—Wheatena Serial—Raising Junior NBC**  
**WCBM—Chick Newell's Palais d'Or Orchestra**  
**WFBR—The Catholic Program NBC**  
**6:15 P. M.**  
**WBAL—Artists Recital—Violin and Piano Selections**  
**6:30 P. M.**  
**WFBR—Hippodrome Theatre Program**  
**WBAL—Songs Mother Used to Sing**  
**WCAO—Rice Bakery Program—Jack Lederer's Orchestra**  
**WCBM—Oriole Department Store Entertainers**  
**6:45 P. M.**  
**WBAL—Los Pamos NBC**  
**7:00 P. M.**  
**WCAO—Empire Laundry Program**  
**WBAL—Willys-Overland Orchestra — Harold Stokes NBC**  
**WCBM—Rosenthal's Foot Teasers**  
**WFBR—Jack Riley's Orchestra**  
**7:15 P. M.**  
**WBAL—Harp solos—Sylvia Meyer**  
**WCAO—Hygrade Sylvania Program—Mark Warnow's Orchestra CBS**  
**WFBR—Jolly Time Revue—Jules Herbuveaux' Orchestra NBC**  
**7:30 P. M.**  
**WBAL—Fleischmann Program—The Three Bakers—Vocal and Dance Selections**  
**WCAO—Luden's Program—Dan Rybb's Novelty Orchestra CBS**  
**WCBM—Football and Soccer Scores**  
**WFBR—Iodent Club of the Air NBC**  
**8:00 P. M.**  
**WBAL—Enna Jettick Melodies—Vocal selections NBC**  
**WCAO—Eastman Kodak Program—Devils, Drugs, Doctors CBS**  
**WCBM—Westminster Presbyterian Church Services**  
**WFBR—Chase and Sanborn Program—Eddie Cantor NBC**

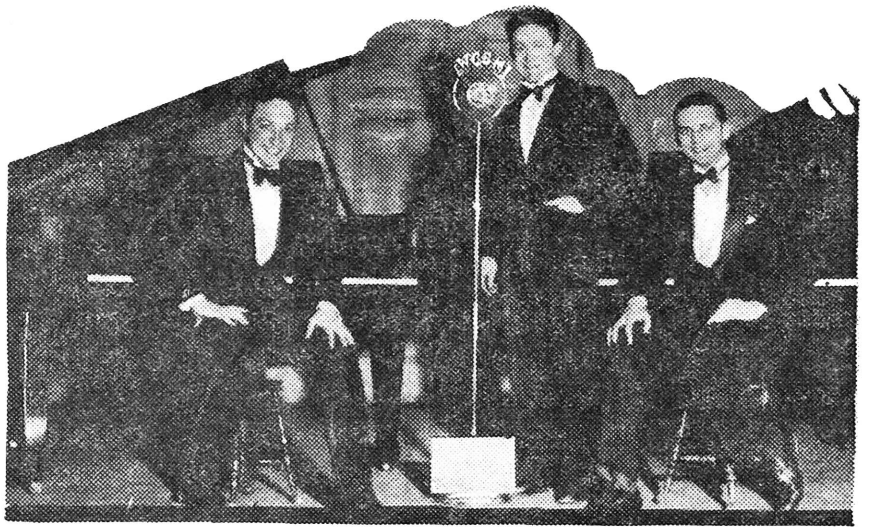
## SPECIALS FOR SUNDAY

**3:15 P. M. .... WCAO—New York Philharmonic Orchestra CBS**  
**4:00 P. M. .... WFBR—Florsheim Shoe Frolic NBC**  
**5:00 P. M. .... WBAL—National Vespers—Dr. Harry Emerson Fosdick NBC**  
**8:00 P. M. .... WFBR—Chase and Sanborn Program—Eddie Cantor NBC**

**1:15 P. M.**  
**WBAL—Symphonic Hour—Walter Damrosch, Conductor NBC**  
**1:30 P. M.**  
**WCAO—Watch Tower Service—Records**  
**WCBM—Regal Shop Stylists**  
**WFBR—Parkwood Memorial Park Orchestra**  
**1:45 P. M.**  
**WCAO—Venida Program—Emery Deutsch's Ensemble CBS**  
**2:00 P. M.**  
**WCAO—Pastorale—Mixed Quartet CBS**  
**WCBM—Guy Lucas' Orchestra**  
**WFBR—To be Announced**  
**2:15 P. M.**  
**WBAL—Careless Love — Negro dramatic sketch NBC**  
**WFBR—Sunday Bright Spots—Mariners Trio with Jack Pettis' Orchestra NBC**  
**2:30 P. M.**  
**WCAO—Columbia Church of the Air CBS**  
**WBAL—Yeast Foamers—Herbie Kay's Orchestra NBC**  
**WCBM—Bugatch Variety Boys—Leo Bate-man and Jack Rohr**  
**WFBR—Moonshine and Honeysuckle—Dra-matic Sketch NBC**  
**3:00 P. M.**  
**WBAL—National Youth Conference NBC**  
**WCAO—Ann Leaf at the Organ CBS**  
**WCBM—Phillips Roofers' Orchestra**  
**WFBR—Emmanuel Wad, Concert pianist**  
**3:15 P. M.**  
**WCAO—New York Philharmonic Orchestra CBS**  
**3:30 P. M.**  
**WBAL—The Baltimoreans**  
**WFBR—Dr. S. Parkes Cadman—Talks and music NBC**  
**4:00 P. M.**  
**WBAL—Cook's Travelogue NBC**  
**WCAO—Father Coughlin from Shrine of Little Flower, Detroit**  
**WCBM—Church of Jesus Christ Latter Day Saints Services**  
**WFBR—Florsheim Frolic NBC**  
**4:15 P. M.**  
**WBAL—John Fogerty—Tenor NBC**  
**4:30 P. M.**  
**WBAL—The Musical Showman — Newspaper Sketch NBC**  
**WCBM—Rameses Rhythm Boys**  
**WFBR—Davey Tree Program NBC**  
**4:45 P. M.**  
**WCBM—The Beetle Boys—Banjoists**

**8:15 P. M.**  
**WBAL—Collier's Radio Hour, Guest Speak-ers, Dramatizations and Orche-tra**  
**WCAO—Bittle Bakeries—Pie-owners Orche-tra**  
**8:45 P. M.**  
**WCAO—Cream of Wheat Program—Angelo Patri CBS**  
**9:00 P. M.**  
**WCAO—Roxy Theater Symphony CBS**  
**WCBM—Ted Elmore's West Baltimoreans**  
**WFBR—Our Government—Talk by David Lawrence NBC**  
**9:15 P. M.**  
**WBAL—New Years Resolutions NBC**  
**WFBR—American Album of Familiar Music**  
**9:30 P. M.**  
**WCAO—Scott's Emulsion Program—Adven-tures of Count Von Lukner CBS**  
**WCBM—Organ Recital—John H. Varney**  
**9:45 P. M.**  
**WBAL—Kaffee Haag Program—Kellogg Sum-ber Music NBC**  
**WFBR—Buick Musical Comedy Program—Revelers Quartet NBC**  
**10:00 P. M.**  
**WCAO—Affiliated Products — Edna Wallace Hopper's Revue CBS**  
**WCBM—Nitty Nite Club Orchestra**  
**10:15 P. M.**  
**WFBR—National Oratorio Society Program NBC**  
**10:30 P. M.**  
**WCAO—Ernest Hutcheson, pianist CBS**  
**WCBM—Royal Theatre Gang**  
**10:45 P. M.**  
**WBAL—Land of Wonder and Fear—Talk By F. A. M. Hedges NBC**  
**WFBR—Seth Parker's Neighbors NBC**  
**11:00 P. M.**  
**WBAL—David Novallis, violinist — Henrietta Schumann, pianist NBC**  
**WCAO—The Gauchos—String ensemble—Vocal selections CBS**  
**11:15 P. M.**  
**WBAL—South Sea Islanders NBC**  
**WFBR—Ralph Kirby, the Dream Singer NBC**  
**11:30 P. M.**  
**WFBR—Jesse Crawford—Poet of the Organ NBC**  
**WBAL—The Three Doctors—Songs NBC**  
**WCAO—California Melodies CBS**  
**11:45 P. M.**  
**WBAL—Xylophone solos—Sam Herman NBC**

# JACK AND STEVE WITH PERRY



JACK, PERRY AND STEVE

Jack and Steve, the Piano Twins and Perry Alexander, WCBM's announcer. What a trio. Jack is on the left, Perry in the center and naturally Steve is on the right. Almost forgot to tell you that Jack gets his mail addressed to Jack Rohr and his partner receives his under the name of Steve Zarmzla. Perry sometimes gets only "The World's Worst Announcer" on the front of his envelopes but that is his own fault. When he sent us this photograph, taken in WCBM's studios just as the Twins finished their program, Perry wrote on it, "X marks the spot where stands the World's Worst Announcer." Far be it from us to print anything so untrue about Perry so we had the artist brush the sentence from the photograph.

## Broughton Tall Has Large Music Library

Broughton Tall, supervisor of Literary Research at WBAL, is a Columbia University man, the author of several plays and one-act sketches which have been produced by leading stage stars, and has one of the most complete private research libraries on music and the drama. He jots down his notes containing bits of information and other facts dug out in the course of his research work for various programs on the backs of old envelopes, scraps of paper, newspaper margins—anything that happens to be handy at the moment.

## Radio Guide

Application for second class entry has been made with the Postmaster, Baltimore, Md., and is pending.

Published weekly by  
**RADIO GUIDE, Inc.**

520 W. Pratt St., Baltimore Md.  
 Telephone Plaza 4346

Address all communications and make all remittances to

**RADIO GUIDE, Inc.**

520 W. Pratt St., Baltimore Md.

Advertising Office  
 15 E. Fayette St.—Plaza 1977

Copyright 1931 by **RADIO GUIDE, INC.**

Single copies, Five Cents  
 Two Dollars and Fifty Cents per Year

Open Evenings Test Call 37.00

**WINTERS JONES**

Radio Engineering Service  
 15 YEARS EXPERIENCE

318 E. North Ave. University 7888

## STATION WCAO

**EVERY SUNDAY 5:30 P. M.**

**'blue coal'  
 RADIO REVUE**

**MOST UNUSUAL PRIZE CONTEST**

**EVER SPONSORED**

**160 Valuable Prizes!**

**INFORMATION FURNISHED BY**

**Any of the Following 'blue coal' Distributors**

**W. J. CHAPMAN COAL CO.**  
 201 W. Lombard St. Plaza 6120

**T. C. DAVIS COAL CO.**  
 900 W. 36 St. University 2386

**CATON COAL CO., Inc.**  
 3219 Frederick Ave. Gil. 5636

**FRED GROSS & SONS**  
 3406 O'Donnell St. Broadw'y 1460

# MONDAY PROGRAMS—JANUARY 4

**7:00 A. M.**  
 WCAO—Early Risers Musical Clock  
 WCBM—Morning Melodies  
 WFBR—Time Service Program

**7:30 A. M.**  
 WBAL—A Song for Today NBC  
 WCBM—May Co.'s Mary Ann Kiddie Klub

**7:45 A. M.**  
 WBAL—Cream of Wheat Program—Jolly Bill and Jane NBC  
 WCAO—Kiddie Club

**8:00 A. M.**  
 WBAL—On the 8:15—Comedy and Songs NBC  
 WCAO—Paul Billotti's Orchestra  
 WCBM—Morning Glories  
 WFBR—Quaker Early Birds—Gene and Glenn NBC

**8:15 A. M.**  
 WBAL—Phil Cook, the Quaker Man NBC  
 WCBM—Morning Glories  
 WFBR—Morning Devotions NBC

**8:30 A. M.**  
 WBAL—Sunbirds—String Ensemble NBC  
 WFBR—Cheerio NBC

**8:45 A. M.**  
 WBAL—Blaufuss Ensemble NBC  
 WCAO—Old Dutch Girl—Newsy Jingles CBS  
 WCBM—News Flashes

**9:00 A. M.**  
 WBAL—The Laugh Club—Tom Brennele NBC  
 WCAO—Gypsy Music Makers—String Ensemble, CBS  
 WCBM—Musical Gems  
 WFBR—Le Trio Charmante NBC

**9:15 A. M.**  
 WBAL—Morning Glories—String Ensemble NBC  
 WFBR—Tom Waring's Troubadours NBC

**9:30 A. M.**  
 WBAL—Montgomery Ward Program—Irma Glen, Organist NBC  
 WCAO—Tony's Scrapbook—Readings by Tony Wons CBS

**9:45 A. M.**  
 WBAL—Miracles of Magnolia—Negro Monologue NBC  
 WCAO—The Ambassadors—Male Trio CBS  
 WCBM—Union Mutual Musicale  
 WFBR—Piano Moods—Chester LaRue Mahl

**10:00 A. M.**  
 WBAL—Shopping Around with Nancy Turner  
 WCAO—Marmola Program—Records  
 WCBM—Bill Harrison, pianist  
 WFBR—Melody Parade

**2:00 P. M.**  
 WCAO—The Singing Vagabond CBS  
 WBAL—Quality Group Cooking School  
 WFBR—To be Announced

**2:15 P. M.**  
 WFBR—The Nomads NBC

**2:30 P. M.**  
 WCAO—American School of the Air CBS

**2:45 P. M.**  
 WFBR—To be Announced

**3:00 P. M.**  
 WFBR—Woman's Radio Review NBC  
 WCAO—The Four Elton Boys CBS

**3:15 P. M.**  
 WCAO—Thermin Electro Ensemble CBS

**3:30 P. M.**  
 WCAO—Songs by Arthur Jarrett CBS

**3:45 P. M.**  
 WCAO—Sam Prager, pianist CBS

**4:00 P. M.**  
 WFBR—Pop Concert NBC  
 WBAL—Talk by Emily Post NBC  
 WCAO—Bert Lown's Orchestra CBS

**4:15 P. M.**  
 WBAL—Charles Schuerman's Orchestra NBC

**4:30 P. M.**  
 WFBR—Phil Spitalny's Tea Dansante NBC  
 WCAO—National Student Federation of America Program CBS

**4:45 P. M.**  
 WBAL—Swanee Serenaders—Harold Stokes' Orchestra NBC

**5:00 P. M.**  
 WCAO—Asbury Park Casino Orchestra CBS  
 WBAL—To Be Announced  
 WFBR—Police Alarms—Evening Variety Program

**5:15 P. M.**  
 WBAL—Swanee Serenaders—Harold Stokes' Orchestra NBC

**5:30 P. M.**  
 WBAL—Old Pappy—Negro Impersonations NBC

**5:45 P. M.**  
 WCAO—Uncle Olie's Kre-Mel Gang CBS  
 WCBM—Rhythm and Harmony

**5:55 P. M.**  
 WCBM—Lost and Found  
 WCAO—The Lone Wolf Tribe CBS  
 WBAL—Wander Program—Little Orphan Annie—Children's Playlet NBC  
 WFBR—Russ Columbo's Orchestra NBC

**6:00 P. M.**  
 WFBR—Golden Moments—Dr. LaBorwit  
 WBAL—Wheatena Serial—Raising Junior NBC

## SPECIALS FOR MONDAY

**4:30 P. M.**....WCAO—National Student Federation Program CBS

**8:00 P. M.**....WBAL—Contented Program—Fireside Singers NBC

**9:30 P. M.**....WFBR—Parade of the States—Delaware NBC

**10:30 P. M.**....WCAO—Chesterfield Program—Alexander Gray with Nat Shilkret's Orchestra CBS

**10:15 A. M.**  
 WFBR—Ceresota Flour Program—Dr. Royal S. Copeland NBC  
 WBAL—U. S. Navy Band NBC  
 WCAO—String and Novelty Orchestra CBS  
 WCBM—Fred B. Hammann's Victor Period

**10:30 A. M.**  
 WBAL—A. & P. Program—Food Talk by Colonel Goodbody NBC  
 WCBM—Merchants' Air Review  
 WFBR—Breen and de Rose—Vocal and instrumental duo NBC

**10:45 A. M.**  
 WBAL—Consolaires—Irma Glen, organist NBC  
 WCAO—The Madison Singers CBS  
 WFBR—Contralto solos—Kay Reid NBC

**11:00 A. M.**  
 WBAL—Mrs. A. M. Goudiss—Household Talk NBC  
 WCBM—Heart and Home Service  
 WCAO—Morning Moods—Emery Deutsch's Orchestra CBS  
 WFBR—Sonata Recital—Violin and piano selections NBC

**11:15 A. M.**  
 WBAL—Noon-Time Tunes

**11:30 A. M.**  
 WBAL—Rogers Musical Trio NBC  
 WFBR—Home Topics Club  
 WCAO—Front Page Personalities—Anne Lazar CBS  
 WCBM—Air Forum

**11:45 A. M.**  
 WCBM—Varieties  
 WBAL—Noon-Time Tunes  
 WCAO—Tenor Solos—Ben Alley CBS

**12:00 Noon**  
 WCBM—Jack Decker, organist  
 WFBR—General Electric Home Circle—Vocal and organ selections NBC  
 WCAO—Don Bigelow's Orchestra CBS

**12:15 P. M.**  
 WBAL—Dramatic Sketch with Pat Barnes—NBC  
 WFBR—Variety Interlude

**12:30 P. M.**  
 WBAL—National Farm and Home Hour NBC  
 WCAO—Paul Billotti's Salon Orchestra  
 WCBM—Howard Furniture Program

**1:00 P. M.**  
 WCBM—George and Pete  
 WFBR—Lord Baltimore Hotel Orchestra

**1:15 P. M.**  
 WCBM—Baritone solos—Clarence Flaggs

**1:30 P. M.**  
 WBAL—The Arundels  
 WCAO—Columbia Salon Orchestra CBS  
 WFBR—Celestial Restaurant Orchestra

**WCAO—The Globe Trotter—News reports**  
**WCBM—Chick Newell's Palais d'Or Orchestra**

**6:05 P. M.**  
 WFBR—Celestial Restaurant Orchestra

**6:15 P. M.**  
 WBAL—American Taxpayers League Program—Talk by Hon. William H. King NBC

**WCAO—Tastyest Gloom Chasers—Colonel and Budd CBS**

**6:30 P. M.**  
 WBAL—Royal Vagabonds NBC  
 WCAO—Don Bigelow's Orchestra CBS  
 WCBM—Roy and Ed—Songs

**6:45 P. M.**  
 WCAO—Gunther Brewing Company Program  
 WCBM—Sports Scrap Book—Lee Davis  
 WBAL—Literary Digest Topics in Brief—Lowell Thomas NBC

**WFBR—Swift and Co. Program—The Stebbins Boys NBC**

**7:00 P. M.**  
 WBAL—The Pepsodent Program—Amos 'n' Andy NBC  
 WCAO—Wrigley Program—Myrt and Marge CBS

**WCBM—Blum's Program—The Old Stager**  
**WFBR—Vermont Lumber Jacks, Male Quartet NBC**

**7:15 P. M.**  
 WBAL—Tastyest Jesters—Pep, Vim and Vigor NBC  
 WCAO—Cremo presents Bing Crosby CBS  
 WFBR—The Campbell Orchestra NBC

**7:30 P. M.**  
 WBAL—Phil Cook, The Quaker Man, NBC  
 WCAO—Amoco Program—The Motoring Minstrel

**WCBM—Valley Inn Orchestra**  
**WFBR—Prince Albert Quarter Hour—Paul Van Loan's Orchestra NBC**

**7:45 P. M.**  
 WBAL—Waves of Melody—Victor Arden's Orchestra NBC  
 WCAO—Camel Quarter Hour—Morton Downey, Tony Wons and Jacques Renard's Orchestra CBS  
 WFBR—Russ Cullen's Music

**8:00 P. M.**  
 WBAL—The Contented Program, with the Fireside Singers NBC  
 WCAO—The Bath Club, with Margaret Santry CBS  
 WCBM—Who's Who—Gustave Bisgyer  
 WFBR—Spotlight Revue

**8:15 P. M.**  
 WCAO—Singin' Sam, the Barbasol Man CBS  
 WCBM—Rudolph Wursthorn, concertina

# ABOUT LLOYD BLOXHAM

It was at a party here in Baltimore several years ago that a young fellow entertained the company with an assortment of popular melodies sung in the approved crooning style.

Among those present was Chester La Rue Mahl, staff pianist of WFBR and when the evening's festivities had concluded he advised the singer to visit the station for an audition.

The young warbler was enthused at the idea of breaking into radio and was at the station the next day

drew's Episcopal Church of Baltimore.

He is a surveyor by trade but declares that he would rather sing for a living than spend the rest of his life determining how many acres are in certain tracts of land.

His education was obtained at the Baltimore Polytechnic Institute where he gained fame as forward on the school's basketball team.

Since his debut in radio a year ago he has taken his work over the air very seriously. In addition to journeying several times to Washington where he appeared in programs over WMAL, he has had an audition at the NBC studios in New York. The chain officials were



LLOYD BLOXHAM

at the prescribed time. At WFBR the verdict of those who tested the would-be broadcaster's voice was—"O. K." That was about one year ago and the audience of the station have been hearing him every week since. From the volume of his fan mail they will be hearing him many more months unless one of the big chains grab him.

His name is Lloyd B. Bloxham and he started his vocal career at an early age when he sung soprano parts in the boys choir of St. An-

pleased with the quality of his voice and promised that he may be given an opportunity in the near future to display it to chain audiences.

Of course he has a hobby.

It is collecting and learning every piece of popular and semi-classical music which has been published in the past ten years. His associates say that one of the hardest things they know of is to call upon him for any popular number which he cannot sing immediately.

He knows them all, they declare.

## Contract On Xmas Tree

A new contract was among the Xmas presents received by Peter Dixon, author of the WJZ daily domestic skit, Raising Junior. The contract, extending the series well into 1932, was signed recently by the Wheatena Corporation, sponsors of the programs.

**Dr. Albert La Borwit**  
 Baltimore's Leading Chiropractor and  
 Physiotherapist  
 INAUGURATES A  
**New Health Club Service**  
**\$12.00** Includes  
 One month's Chiropractic  
 and Physiotherapy Treatments  
 For Further Information See  
 DR. ALBERT LA BORWIT  
 504 Park Bank Bldg. Top Floor  
 Corner Lexington and Liberty Sts.  
 Plaza 3731 Hours 9 a.m. to 5 p.m.

## MONDAY PROGRAMS—Continued

**8:30 P. M.**  
 WBAL—Death Valley Days—Dramatic program, Orchestra NBC  
 WCAO—La Palma presents Kate Smith CBS  
 WCBM—Bob Brooks' Trio  
 WFBR—The Voice of Firestone NBC

**8:45 P. M.**  
 WCAO—Pompeian Make-up Box—CBS  
 WCBM—City Snickers

**9:00 P. M.**  
 WBAL—Maytag Program—Wanderer's Quartet Roy Bargy's Orchestra NBC  
 WCAO—Vapex Program—Mills Bros. CBS  
 WFBR—The Regal Program—Orchestral music

**WCBM—Eddie Kilman's Orchestra**

**9:15 P. M.**  
 WFBR—Jane and Bill, the Juvenile Pair  
 WCAO—The Metropolitan CBS

**9:30 P. M.**  
 WBAL—To Be Announced NBC  
 WCAO—Bourjois—Evening in Paris CBS  
 WCBM—Albert Read's Orchestra  
 WFBR—Parade of the States—Delaware NBC

**10:00 P. M.**  
 WCBM—Cotton Club Orchestra  
 WCAO—Guy Lombardo's Orchestra CBS

**WFBR—True Story Program—Drama NBC**

**10:30 P. M.**  
 WCAO—Nat Shilkret's Orchestra CBS  
 WCBM—Nitty Nite Club Orchestra  
 WFBR—El Cabellero

**10:45 P. M.**  
 WCAO—The Street Singer—Arthur Tracey CBS

**11:00 P. M.**  
 WBAL—Slumber Music—Ludwig Laurier's String Ensemble NBC  
 WCAO—Master Music Room—Symphonic Orchestra  
 WCBM—Club Madrid Orchestra  
 WFBR—Celestial Restaurant Orchestra

**11:15 P. M.**  
 WCAO—Toscha Seidel's Concert Orchestra CBS

**11:30 P. M.**  
 WBAL—The Three Doctors—Comedy and songs NBC  
 WCAO—Eric Madieguera's Orchestra CBS  
 WFBR—Sherry's Orchestra  
 WCBM—Club Ritz Orchestra

**11:45 P. M.**  
 WBAL—Baritone Solos—Jack Whiting NBC

# TUESDAY PROGRAMS—JANUARY 5

**7:00 A. M.**  
 WCAO—Early Risers Musical Clock  
 WCBM—Morning Melodies  
 WFBR—Time Service Program

**7:30 A. M.**  
 WBAL—A Song for Today NBC  
 WCBM—May Co.'s Mary Ann Kiddie Klub

**7:45 A. M.**  
 WBAL—Cream of Wheat Program—Jolly Bill and Jane NBC  
 WCAO—Kiddie Club

**8:00 A. M.**  
 WBAL—On the 8:15—Comedy and Songs NBC  
 WCAO—Paul Billotti's Orchestra  
 WCBM—Morning Glories  
 WFBR—Quaker Early Birds—Gene and Glenn NBC

**8:15 A. M.**  
 WBAL—Phil Cook, the Quaker Man NBC  
 WCBM—Morning Glories  
 WFBR—Morning Devotions NBC

**8:30 A. M.**  
 WBAL—Sunbirds—String Ensemble NBC  
 WFBR—Cheerio NBC

**8:45 A. M.**  
 WBAL—Blaufuss Ensemble NBC  
 WCBM—News Flashes

**9:00 A. M.**  
 WBAL—The Laugh Club—Tom Brennie NBC  
 WCAO—Operatic Echoes—Symphonic Orchestra CBS  
 WCBM—Musical Gems  
 WFBR—Variety Interlude

**9:15 A. M.**  
 WBAL—Morning Glories NBC  
 WFBR—Tom Waring's Troubadours NBC

**9:30 A. M.**  
 WBAL—Montgomery Ward Program—Irma Glen, organist NBC  
 WCAO—Tony's Scrapbook—Readings by Tony Wons CBS

**9:45 A. M.**  
 WBAL—Miracles of Magnolia—Negro Monologue NBC  
 WCAO—Helen Board, soprano CBS  
 WCBM—Union Mutual Musicales  
 WFBR—Duncan Brown, pianist

**10:00 A. M.**  
 WBAL—United States Marine Band NBC  
 WCAO—Oxol Trio—Grant, Graham and Coughlin CBS  
 WCBM—Merchants' Air Review  
 WFBR—Musical Belts

**10:15 A. M.**  
 WCAO—United States Navy Band CBS  
 WFBR—Breen and de Rose—Vocal and instrumental duo NBC

**2:00 P. M.**  
 WCAO—Wyeth Chemical Program—Songs by Aunt Jemima CBS  
 WBAL—Food Talk by Mrs. J. Heath NBC  
 WFBR—To be Announced

**2:15 P. M.**  
 WFBR—League of American Penwomen  
 WBAL—Weather Report  
 WCAO—Columbia Salon Orchestra—Emery Deutsch, conductor CBS

**2:20 P. M.**  
 WBAL—Radio Troubadours—Harold Stoke's Orchestra NBC

**2:30 P. M.**  
 WCAO—American School of the Air CBS  
 WBAL—To be announced NBC  
 WFBR—Dorothy Daubel, pianist

**2:45 P. M.**  
 WFBR—Talk by Al Martin  
 WBAL—Piano Moods—Lee Sims, pianist—To May Bailey, soprano NBC

**3:00 P. M.**  
 WFBR—Piano Lessons NBC  
 WBAL—Music in the Air—Piano Lessons NBC

**3:00 P. M.**  
 WCAO—Ann Leaf at the Organ CBS

**3:30 P. M.**  
 WBAL—Hello Marie—Comedy Skit NBC  
 WCAO—Musican Americana CBS

**3:45 P. M.**  
 WBAL—Rhythmic Serenade—Harold Stoke's Orchestra NBC

**4:00 P. M.**  
 WBAL—Salon Music by the Calvertons  
 WCAO—Songs by Miriam Ray CBS

**4:15 P. M.**  
 WCAO—Comedy and Songs—The Funny Boners CBS

**4:30 P. M.**  
 WBAL—Tenor solos—John Good  
 WCAO—Phil Fisher's Orchestra CBS  
 WFBR—Phil Spitalny's Tea Dansante NBC

**4:45 P. M.**  
 WBAL—Talk by Alyce Lytle, Supervisor Home Service Bureau, Gas Co.

**5:00 P. M.**  
 WBAL—Maltine Story Program—Children's Drama NBC  
 WFBR—To be Announced

**5:15 P. M.**  
 WCAO—Meet the Artist—Bob Taplinger interviews a radio personality CBS  
 WFBR—Skippy

**5:30 P. M.**  
 WFBR—Police Alarms—Variety Program  
 WBAL—Old Pappy—Negro Impersonations NBC

## SPECIALS FOR TUESDAY

**8:30 P. M.**....WBAL—Peabody Conservatory Program

**9:00 P. M.**....WCAO—Ben Bernie's Blue Ribbon Orchestra CBS

**9:30 P. M.**....WCBM—Wrestling Matches

**10:00 P. M.**....WFBR—Lucky Strike Orchestra—Walter Winchell NBC

**10:30 A. M.**  
 WBAL—A. & P. Program—Food Talk by Colonel Goodbody NBC  
 WCBM—Jack Decker, Organist  
 WFBR—Pie Plant Pete

**10:45 A. M.**  
 WBAL—R. B. Davis Program—Mystery Chef NBC  
 WFBR—Rumford Radio School of Cookery

**11:00 A. M.**  
 WBAL—Forecast School of Cookery NBC  
 WCBM—Heart and Home Service  
 WFBR—Child Health Talk NBC

**11:15 A. M.**  
 WBAL—Rhythm Ramblers—Harold Stokes' Orchestra NBC  
 WCAO—The Ambassadors CBS  
 WFBR—Radio Household Institute—Drama NBC

**11:30 A. M.**  
 WBAL—Through the Looking-Glass—Beauty talk NBC  
 WCAO—Morning Minstrels CBS  
 WCBM—Great Scott's Entertainer  
 WFBR—Hugo Mariani's Marionettes NBC

**11:45 A. M.**  
 WBAL—Jill and Judy NBC  
 WCAO—Tenor Solos—Ben Alley CBS  
 WCBM—Le Roy McKnew, pianist

**12:00 Noon**  
 WBAL—The Merrie-men Quartet NBC  
 WCBM—Chick Newell's Palais d'Or Orchestra  
 WFBR—General Electric Home Circle NBC  
 WCAO—Don Bigelow's Orchestra CBS

**12:15 P. M.**  
 WBAL—Swift & Co. Program—Pat Barnes in person—Impersonations NBC  
 WCAO—Maryland Federation of Women's Clubs Program  
 WFBR—Variety Interlude

**12:30 P. M.**  
 WBAL—National Farm and Home Hour NBC  
 WCAO—Studio Program—Records  
 WCBM—Howard Furniture Co.'s Program

**1:00 P. M.**  
 WCAO—Pabst-ett Varieties CBS  
 WCBM—Todd and Craig—String Novelties  
 WFBR—Lord Baltimore Hotel Orchestra

**1:15 P. M.**  
 WCAO—Studio Program—Records  
 WCBM—The Connecticut General

**1:30 P. M.**  
 WBAL—Don Pedro's Orchestra NBC  
 WCAO—Savoy Plaza Orchestra—String Ensemble CBS  
 WFBR—Celestial Restaurant Orchestra

**10:30 A. M.**  
 WCAO—Salty Sam, the Sailor CBS  
 WCBM—Rhythm and Harmony

**5:45 P. M.**  
 WBAL—Wander Program—Little Orphan Annie—Children's Playlet NBC  
 WCAO—National Federation Program CBS  
 WCBM—Lost and Found period

**6:00 P. M.**  
 WBAL—Wheatena Serial—Raising Junior NBC  
 WCAO—The Globe Trotter—News reports  
 WCBM—Talk by Joseph Rosenthal  
 WFBR—Celestial Restaurant Orchestra

**6:15 P. M.**  
 WBAL—At the Console  
 WCAO—George Hall's Orchestra CBS  
 WCBM—Try-Me Movie Contest

**6:30 P. M.**  
 WFBR—Russ Cullen's Music  
 WCAO—Koester Bakers—Bob Lula's Orchestra  
 WCBM—The Dale Sisters

**6:45 P. M.**  
 WBAL—Literary Digest Topics in Brief—Lowell Thomas NBC  
 WFBR—Swift and Co. Program—The Stebbins Boys NBC  
 WCBM—Sports Scrap Book—Lee Davis

**7:00 P. M.**  
 WBAL—Popsodent Program—Amos 'n' Andy NBC  
 WCAO—Wrigley Program—Myrt and Marge CBS  
 WFBR—Lord Baltimore Hotel Orchestra  
 WCBM—Bim Hagerman's Trio

**7:15 P. M.**  
 WBAL—Gaytees Orchestra—Odette Myrtil, Conductor NBC  
 WCAO—Cremo presents Bing Crosby CBS  
 WCBM—Regal Shop Stylists

**7:30 P. M.**  
 WBAL—Remington Rhythm Rounders  
 WCAO—Kaltenborn Edits the News CBS  
 WFBR—Prince Albert Quarter Hour—Paul Van Loan's Orchestra NBC

**7:45 P. M.**  
 WBAL—The Merry-Makers—Quartet  
 WCAO—Camel Quarter Hour—Morton Downey, Tony Wons—Jacques Renard's Orchestra CBS  
 WCBM—Timely Topics  
 WFBR—Soprano solos—Louise Walker

**8:00 P. M.**  
 WBAL—To Be Announced NBC  
 WCAO—The Bath Club, with Margaret Santry CBS  
 WCBM—Shadows and Sunbeams  
 WFBR—Harvey Alexander's Orchestra

# PLAYED WAY FROM NEW ORLEANS

Suppose you were stranded in a strange city more than a thousand miles from home and your getting back depended upon how well you played and sang? No applause and no further engagements meaning that you did not get enough money for the hop to the next town and much more important—no money for food.

Russ Cullen, crooner of WFBR fame remembers that it was not many years ago that he and his as-

sociates were in just such a predicament. It was a question of—play or walk home.

It all came about when he was a member of Ray Miller's Brunswick Recording Orchestra. This group of musicians traveled across and about the country until they reached New Orleans. Here, Russ says, the orchestra "went broke" and Miller left them. How to get back to Baltimore? That was the question.

Russ stepped into the breach and took a firm hold upon the reins. He secured engagements here and there, some for small remuneration and others for more substantial amounts. It was a hard struggle, he declares, the way this group of stranded musicians literally played their way nearly across half the continent. But months later they finally reached the Atlantic Coast and—home.

Snug here in Baltimore, Russ can now look back on those days with reminiscent chuckles. It all seems like a joke now, he declares, but "we felt a lot different about the matter down in New Orleans."

"Music," Russ says, "is a human expression, the beat of the human heart."

His first real serious attempts at



RUSS CULLEN

sociates were in just such a predicament. It was a question of—play or walk home.

It all came about when he was a member of Ray Miller's Brunswick Recording Orchestra. This group of musicians traveled across and about the country until they reached New Orleans. Here, Russ says, the orchestra "went broke" and Miller left them. How to get back to Baltimore? That was the question.

Russ stepped into the breach and took a firm hold upon the reins. He secured engagements here and there, some for small remuneration and others for more substantial amounts. It was a hard struggle, he declares, the way this group of stranded musicians literally played their way nearly across half the con-

sociates were in just such a predicament. It was a question of—play or walk home.

It all came about when he was a member of Ray Miller's Brunswick Recording Orchestra. This group of musicians traveled across and about the country until they reached New Orleans. Here, Russ says, the orchestra "went broke" and Miller left them. How to get back to Baltimore? That was the question.

Russ stepped into the breach and took a firm hold upon the reins. He secured engagements here and there, some for small remuneration and others for more substantial amounts. It was a hard struggle, he declares, the way this group of stranded musicians literally played their way nearly across half the con-

## TUESDAY PROGRAMS—Continued

**8:15 P. M.**  
 WCAO—Phillips Magnesia Program—Abe Lyman's Band CBS

**8:30 P. M.**  
 WBAL—Peabody Conservatory Program  
 WCAO—La Palina presents Kate Smith—Swanee Songs CBS  
 WFBR—Colonel Alexander Powell NBC

**8:45 P. M.**  
 WCAO—Modern Male Chorus CBS

**9:00 P. M.**  
 WBAL—Household Finance Program—Adolphe Dumont's Orchestra NBC  
 WCAO—Ben Bernie's Orchestra CBS  
 WFBR—Regal Inspirational Program  
 WCBM—Organ Recital—John H. Varney

**9:15 P. M.**  
 WFBR—Tenor solos—Raymond Hulse

**9:30 P. M.**  
 WBAL—Great Personalities by Frazier Hunt NBC  
 WCAO—Scott's Emulsion—Romances of the Sea CBS  
 WCBM—Wrestling Matches  
 WFBR—Spotlight Revue

**9:45 P. M.**  
 WFBR—Concert pianist, Emmanuel Wad

**10:00 P. M.**  
 WCAO—The Shadows CBS  
 WBAL—International Conscience Brand Program

**10:30 P. M.**  
 WBAL—Super Suds Girls—Clara, Lu and Em Comedy Gossip NBC  
 WCAO—Chesterfield Program—Alexander Gray with Nat Shilkret's Orch. CBS  
 WCBM—Natty Nite Club Orchestra

**10:45 P. M.**  
 WCAO—Songs by Jack Miller CBS  
 WBAL—Paris Night Life NBC

**11:00 P. M.**  
 WBAL—The Marylanders  
 WCAO—Front Page Headlines—Newspaper Drama  
 WCBM—Club Madrid Orchestra  
 WFBR—Sherry's Orchestra

**11:15 P. M.**  
 WCAO—Howard Barlow's Symphony Orchestra CBS

**11:30 P. M.**  
 WBAL—The Three Doctors—Comedy and Songs NBC  
 WCAO—George Olsen's Orchestra CBS  
 WFBR—Hotel Belvedere Orchestra  
 WCBM—Cotton Club Orchestra

**11:45 P. M.**  
 WBAL—Dream Pictures—Archer Gibson, organist NBC

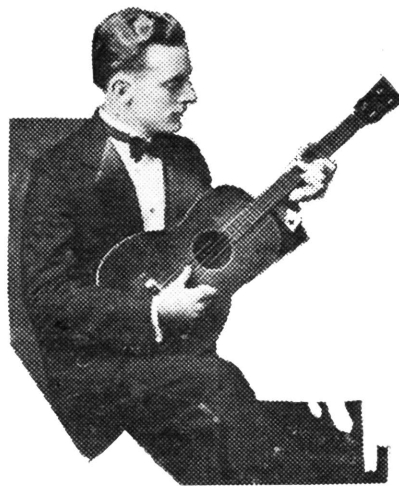
**12:00 Midnight**  
 WCBM—Club Ritz Orchestra

# WEDNESDAY PROGRAMS—JAN. 6

**7:00 A. M.**  
**WCAO**—Early Risers Musical Clock  
**WCBM**—Morning Melodies  
**WFBR**—Time Service Program  
**7:30 A. M.**  
**WBAL**—A Song for Today NBC  
**WCBM**—May Co.'s Mary Ann Kiddie Klub  
**7:45 A. M.**  
**WBAL**—Cream of Wheat Program—Jolly Bill and Jane NBC  
**WCAO**—Kiddie Club  
**8:00 A. M.**  
**WBAL**—On the 8:15—Comedy and Songs NBC  
**WCAO**—Paul Billotti's Orchestra  
**WCBM**—Morning Glories  
**WFBR**—Quaker Early Birds—Gene and Glenn NBC  
**8:15 A. M.**  
**WBAL**—Phil Cook, the Quaker Man NBC  
**WFBR**—Morning Devotions NBC  
**8:30 A. M.**  
**WBAL**—Sunbirds—String Ensemble NBC  
**WFBR**—Cheerio—Inspirational Talks and music NBC  
**8:45 A. M.**  
**WBAL**—Blautuss Ensemble NBC  
**WCAO**—Old Dutch Girl—News Jingles CBS  
**WCBM**—News Jingles  
**9:00 A. M.**  
**WBAL**—The Laugh Club—Tom Brennie NBC  
**WCAO**—Melody Magic—Vincent Sorey's Orchestra CBS  
**WCBM**—Musical Gems  
**WFBR**—Morning Glee Club NBC  
**9:15 A. M.**  
**WBAL**—Morning Glories NBC  
**WFBR**—Ceresota Flour Program—Dr. Royal S. Copeland NBC  
**9:30 A. M.**  
**WBAL**—Montgomery Ward Program—Irma Glen, organist NBC  
**WCAO**—Tony's Scrap Book—Readings by Tony Wons CBS  
**WFBR**—Flying Fingers NBC  
**9:45 A. M.**  
**WBAL**—Miracles of Magnolia—Negro Monologue NBC  
**WCAO**—Rhythm Ramblers—Dance Music CBS  
**WCBM**—Union Mutual Musicale  
**WFBR**—Classic Quarter Hour  
**10:00 A. M.**  
**WBAL**—Shopping with Nancy Turner  
**WCAO**—Oxol Trio—Grant, Graham and Coughlin CBS  
**WCBM**—Home Makers Round Table  
**WFBR**—Musical Bells

**2:00 P. M.**  
**WFBR**—Golden Gems NBC  
**WBAL**—Radio Troubadours—Harold Stokes' Orchestra NBC  
**WCAO**—Wyeth Chemical Program—Songs by Aunt Jemima CBS  
**2:15 P. M.**  
**WCAO**—Ann Leaf at the Organ CBS  
**2:30 P. M.**  
**WCAO**—American School of the Air CBS  
**WBAL**—Piano Moods—Lee Sims, pianist—Ilo May Bailey, soprano NBC  
**2:45 P. M.**  
**WBAL**—Fashion Talk—Molly Gibbons NBC  
**3:00 P. M.**  
**WFBR**—Women's Radio Review NBC  
**WBAL**—Organ Melodies—Irma Glen NBC  
**WCAO**—Songs by Kathryn Parsons CBS  
**3:15 P. M.**  
**WBAL**—"The Home Life of an Indian"—Talk  
**WCAO**—The Four Elton Boys—Male Quartet CBS  
**3:30 P. M.**  
**WBAL**—Charles Cohen, cellist  
**WCAO**—Songs by Arthur Jarrett CBS  
**3:45 P. M.**  
**WBAL**—Rhythmic Serenade—Harold Stokes' Orchestra NBC  
**WCAO**—Columbia Artists recital CBS  
**4:00 P. M.**  
**WFBR**—The Pilgrims NBC  
**WBAL**—Pacific Vagabonds—Songs NBC  
**WCAO**—U. S. Navy Band CBS  
**4:30 P. M.**  
**WBAL**—Eastman School Symphony Orchestra NBC  
**WFBR**—Hester Deal  
**5:00 P. M.**  
**WBAL**—To be Announced NBC  
**WCAO**—Irish Tenor—John Kelvin CBS  
**WFBR**—Baltimore Safety Council talks  
**5:05 P. M.**  
**WFBR**—Police Alarms—Evening Variety Program  
**5:15 P. M.**  
**WBAL**—Health Talk by Marley R. Sherris NBC  
**WCAO**—Uncle Ole's Kre-Mel Gang CBS Program CBS  
**5:30 P. M.**  
**WBAL**—Old Pappy—Negro Impersonations NBC  
**WCAO**—Salty Sam, the Sailor CBS  
**WCBM**—Rhythm and Harmony  
**5:45 P. M.**  
**WBAL**—Wander Program—Little Orphan An-

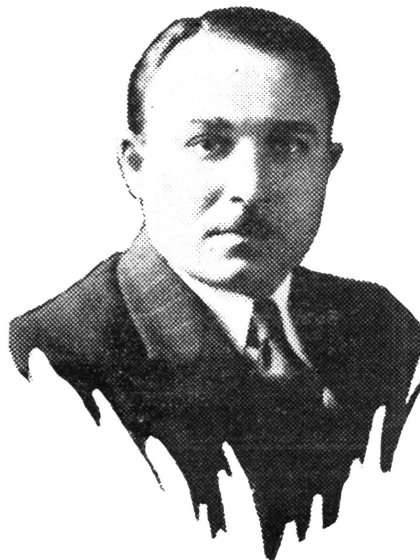
## Singing Guitarist



LEO BATEMAN

Here you have Leo Bateman, whom you hear quite often over WCBM and both hear and see in various Baltimore nightclubs. He sings the popular tunes of the day and accompanies himself on the guitar which you see him holding. Perhaps we are wrong but it seems that Leo is holding the instrument just a bit too stiffly and not at all in the correct manner. We can assure you, however, that when he gets down to business and stops posing for pictures, he really can do things with it.

## Speaks Over Radio



DR. ALBERT LA BORWIT

The talks of Dr. Albert La Borwit, local chiropractor are familiar to the audience of WFBR. He has been giving these five-minute talks at regular intervals for nearly two years.

## WCBM Burlesques Chain Programs

One of the newest programs of WCBM is entitled City Snickers and is presented each Monday at 9 P. M. The feature is a burlesque on chain programs.

Minute dramas, interviews with prominent national personalities, excerpts of chain musical programs are included. During the last broadcast, the Loch Raven Dam was "interviewed". The personal of this skit is still a mystery, although it is admitted that local talent is used.

## Began Career Early

John Wilbourn, studio supervisor at WBAL, began his musical career at the age of six when he was a member of the boys choir of Old St. Paul's P. E. Church, Baltimore, Md.

## Barnett Knows Broadcasting

Stanley W. Barnett, station manager of WBAL, is one of the few men in radio who has a working knowledge of both studio administration and the technical sides of broadcasting.

## SPECIALS FOR WEDNESDAY

7:15 P.M....WCAO—Cremo Presents Bing Crosby CBS

8:30 P.M....WCAO—La Palina Presents Kate Smith CBS

9:00 P.M....WBAL—G. Washington Coffee Program—Adventures of Sherlock Holmes NBC

10:00 P.M....WFBR—Coca Cola Program NBC

**10:15 A. M.**  
**WBAL**—Harold Stokes' Orchestra NBC  
**WCAO**—Melody Parade—Vincent Sorey's Orchestra CBS  
**WFBR**—Melody Parade  
**10:30 A. M.**  
**WBAL**—A. & P. Program—Food Talk by Colonel Goodbody NBC  
**WCBM**—Jack Decker—Organist  
**WFBR**—Wildroot Chat NBC  
**10:45 A. M.**  
**WBAL**—Marly Personality Perfumes  
**WCAO**—The Four Clubmen—Male Quartet CBS  
**WFBR**—Betty Crocker—Cooking talk NBC  
**11:00 A. M.**  
**WCAO**—Semlar Products Program CBS  
**WBAL**—Forecast School of Cookery—Mrs. A. M. Goudiss NBC  
**WCBM**—Heart and Home Service  
**WFBR**—Keeping up with Daughter—Dramatic skit NBC  
**11:15 A. M.**  
**WBAL**—Noon-Time Tunes  
**WCAO**—R. B. Davis Program—The Mystery Chef CBS  
**WFBR**—Irresistible Imps  
**11:30 A. M.**  
**WCAO**—Morning Minsterals Program CBS  
**WCBM**—Merchants' Air Review  
**WFBR**—Hugo Mariani's Marionettes NBC  
**11:45 A. M.**  
**WBAL**—Sweetheart Program—Beauty Talk Ruth Jordan NBC  
**WCAO**—Tenor solos—Ben Alley CBS  
**12:00 Noon**  
**WBAL**—Noon-Time Tunes  
**WCAO**—Don Bigelow's Orchestra CBS  
**WCBM**—Chick Newell's Palais d'Or Orchestra  
**WFBR**—General Electric Home Circle NBC  
**12:15 P. M.**  
**WBAL**—Dramatic skit with Pat Barnes NBC  
**WFBR**—Variety Interlude  
**12:30 P. M.**  
**WBAL**—National Farm and Home Hour NBC  
**WCAO**—Paul Billotti's Salon Orchestra  
**WFBR**—Lord Baltimore Hotel Orchestra  
**1:00 P. M.**  
**WCBM**—Jack and Steve—Piano twins  
**WFBR**—Advertising Club Luncheon  
**1:15 P. M.**  
**WCBM**—The Connecticut General  
**1:30 P. M.**  
**WBAL**—The Arundels  
**WCAO**—Ritz Carlton Hotel Orchestra CBS  
**WFBR**—Celestial Restaurant Orchestra

nle—Children's Playlet NBC  
**WCAO**—The Lone Wolf Tribe CBS  
**WCBM**—Lost and Found  
**6:00 P. M.**  
**WFBR**—Golden Moments—Dr. LaBorwit  
**WBAL**—Music Treasure Box NBC  
**WCAO**—The Globe Trotter—News Reports  
**WCBM**—Baltimore Advertisers' Trio  
**6:05 P. M.**  
**WFBR**—Celestial Restaurant Orchestra  
**6:15 P. M.**  
**WBAL**—Rameses Program—Songs and Music NBC  
**WCAO**—Master Loan Co. Program—The Home Town Philosopher  
**6:30 P. M.**  
**WBAL**—Royal Vagabonds NBC  
**WCAO**—Rice Bakery Program—Jack Lederer's Orchestra  
**WCBM**—Audrey Ley—Songs  
**WFBR**—James J. Corbett—Talk on Fights and Fighters  
**6:45 P. M.**  
**WBAL**—Literary Digest Topics in Brief—Lowell Thomas NBC  
**WCBM**—Sports Scrap Book—Lee Davis  
**WFBR**—Swift Program—The Stebbins Boys NBC  
**7:00 P. M.**  
**WBAL**—The Pepsodent Program—Amos 'n' Andy NBC  
**WCAO**—Wrigley Program—Myrt and Marge CBS  
**WCBM**—Blum's Program—The Old Stager  
**WFBR**—Russ Cullen's Music  
**7:15 P. M.**  
**WBAL**—Sundial Bonnie Laddies NBC  
**WCAO**—Cremo presents Bing Crosby CBS  
**WFBR**—The Campbell Orchestra NBC  
**7:30 P. M.**  
**WBAL**—Phil Cook, The Quaker Man NBC  
**WCAO**—Amoco Program—The Motoring Minstrel  
**WCBM**—Jack Lyon's Orchestra  
**WFBR**—Prince Albert Quarter Hour—Paul Van Loan's Orchestra NBC  
**7:45 P. M.**  
**WBAL**—Esso Program—Bob Ripley "Believe It or Not," NBC  
**WCAO**—Camel Quarter Hour—Morton Downey, Tony Wons—Jacques Renard's Orchestra CBS  
**WFBR**—Baritone solos—Louis Elwood Hawkins  
**8:00 P. M.**  
**WBAL**—Elizabeth Lennox, contralto NBC  
**WCAO**—The Bath Club, with Margaret Santry CBS

## WEDNESDAY PROGRAMS—Continued

**WCBM**—Gospel Tabernacle  
**WFBR**—Standard Oil Co. of New Jersey Program  
**8:15 P. M.**  
**WBAL**—The Mellow—Clarions NBC  
**WCAO**—Singin' Sam, The Barbasol Man CBS  
**8:30 P. M.**  
**WBAL**—Jack Frost Melody Moments NBC  
**WCAO**—La Palina presents Kate Smith—Swanee Music CBS  
**WFBR**—Goodyear Program NBC  
**8:45 P. M.**  
**WCAO**—Pompeian Make-up Box CBS  
**9:00 P. M.**  
**WBAL**—G. Washington Coffee Program—Adventures of Sherlock Holmes NBC  
**WCAO**—The Gold Medal Fast Freight—Male Quartet and Organist CBS  
**WCBM**—Me and My Shadow  
**WFBR**—The Old Counsellor NBC  
**9:15 P. M.**  
**WCBM**—Adelaide Varnum, soprano  
**9:30 P. M.**  
**WBAL**—Dutch Masters Program—Comedy Trio NBC  
**WCAO**—The Eno Crime Club CBS  
**WCBM**—Oscar Appel's Orchestra  
**WFBR**—Mobiloil Concert NBC  
**10:00 P. M.**  
**WBAL**—Russ Columbo's Orchestra NBC  
**WCAO**—Vitality Shoe Program—Vitality Personalities CBS  
**WFBR**—Coca Cola Program—Talks and music NBC  
**WCBM**—Cotton Club Orchestra

**10:15 P. M.**  
**WBAL**—The Tune Detective NBC  
**WCAO**—Weed Tire Chain Program—Andre Kastelanetz Orchestra CBS  
**10:30 P. M.**  
**WBAL**—Supersuds Girls—Clara, Lu and Em—Comedy gossip NBC  
**WCAO**—Chesterfield Program—Alexander Gray with Nat Shilkret's Orch. CBS  
**WCBM**—Nitty Nite Club Orchestra  
**WFBR**—David Guion's Orchestra NBC  
**10:45 P. M.**  
**WBAL**—Hollywood Nights—Dance music NBC  
**WCAO**—The Street Singer—Arthur Tracey CBS  
**11:00 P. M.**  
**WBAL**—Slumber Music—String Ensemble NBC  
**WCAO**—Slim Martin's Orchestra—records  
**WCBM**—Club Madrid Orchestra  
**WFBR**—Celestial Restaurant Orchestra  
**11:15 P. M.**  
**WCAO**—Toscha Seidel's Concert Orchestra CBS  
**11:30 P. M.**  
**WBAL**—The Three Doctors—Comedy and songs NBC  
**WCAO**—Don Redman's Orchestra CBS  
**WCBM**—Frank Perica at the Organ  
**WFBR**—Sherry's Orchestra  
**WCAO**—Don Redman's Orchestra CBS  
**11:45 P. M.**  
**WBAL**—Baritone solos—Jack Whiting NBC  
**12:00 Midnight**  
**WCBM**—Club Ritz Orchestra



# THURSDAY PROGRAMS—JANUARY 7

**7:00 A. M.**  
**WCAO—Early Risers Musical Clock**  
**WCBM—Morning Melodies**  
**WFBR—Time Service Program**  
**7:30 A. M.**  
**WBAL—A Song for Today NBC**  
**WCBM—May Co.'s Mary Ann Kiddie Klub**  
**7:45 A. M.**  
**WBAL—Cream of Wheat Program—Jolly Bill and Jane NBC**  
**WCAO—Kiddie Club**  
**8:00 A. M.**  
**WBAL—On the 8:15—Comedy and Songs NBC**  
**WCAO—Paul Billotti's Orchestra**  
**WCBM—Morning Glories**  
**WFBR—Quaker Early Birds—Gene and Glenn NBC**  
**8:15 A. M.**  
**WBAL—Phil Cook, The Quaker Man NBC**  
**WFBR—Morning Devotions NBC**  
**8:30 A. M.**  
**WBAL—Sunbirds—String ensemble NBC**  
**WFBR—Cheerio NBC**  
**8:45 A. M.**  
**WBAL—Blaufuss Ensemble NBC**  
**WCAO—Edison Breakfast Program CBS**  
**WCBM—News Flashes**  
**9:00 A. M.**  
**WBAL—Tom Brennie—Laugh Club NBC**  
**WCAO—United States Navy Band CBS**  
**WCBM—Musical Gems**  
**WFBR—Morning Glee Club NBC**  
**9:15 A. M.**  
**WBAL—Morning Glories—String Ensemble NBC**  
**WCBM—Union Mutual Musicale**  
**WFBR—Tom Waring's Troubadours NBC**  
**9:30 A. M.**  
**WBAL—Montgomery Ward Program—Irma Glen, organist NBC**  
**WCAO—Tony's Scrapbook—Readings by Tony Wons CBS**  
**WCBM—Bible Talk by Rev. G. E. Lowman**  
**9:45 A. M.**  
**WBAL—Miracles of Magnolia—Negro Monologue NBC**  
**WCAO—The Ambassadors—Male Trio CBS**  
**WFBR—Piano Moods**  
**10:00 A. M.**  
**WBAL—To be Announced NBC**  
**WCAO—Ceresota Flour Program—Health Talk by Dr. Royal S. Copeland CBS**  
**WFBR—Studio Movie Club**  
**WCBM—American Homemakers Program**  
**10:15 A. M.**  
**WCAO—Rhythm Ramblers CBS**  
**WBAL—Harold Stokes' Orchestra NBC**  
**WFBR—Continental Trio**

**WCAO—Wyeth Chemical Program—Songs by Aunt Jemima CBS**  
**2:15 P. M.**  
**WFBR—Classic Quarter Hour**  
**WBAL—Weather Reports NBC**  
**WCAO—Ann Leaf at the Organ CBS**  
**2:20 P. M.**  
**WBAL—Radio Troubadours NBC**  
**2:30 P. M.**  
**WFBR—Piano solos—Marguerite de Vine NBC**  
**WCAO—American School of the Air CBS**  
**2:45 P. M.**  
**WFBR—Opportunities in Journalism NBC**  
**WBAL—Organ Melodies—Irma Glen NBC**  
**3:00 P. M.**  
**WFBR—Women's Radio Review NBC**  
**WCAO—La Forge Berumen Musicale CBS**  
**3:15 P. M.**  
**WFBR—Talk by Miss BIRTHA Reiningcam**  
**WBAL—Literary Program NBC**  
**3:30 P. M.**  
**WBAL—Hello Marie—Comedy Skit NBC**  
**WCAO—Songs by Miriam Ray CBS**  
**3:45 P. M.**  
**WBAL—Rhythmic Serenade—Harold Stokes' Orchestra NBC**  
**WCAO—Virginia Arnold, pianist CBS**  
**4:00 P. M.**  
**WFBR—Salon Singers—Mixed Chorus NBC**  
**WCAO—United States Army Band CBS**  
**WBAL—Salon Music by The Calveritts**  
**4:30 P. M.**  
**WCAO—George Hall's Orchestra CBS**  
**WFBR—Phil Spitalny's Tea Dansante NBC**  
**5:00 P. M.**  
**WFBR—Police Alarms—Variety Program**  
**WBAL—Brazilian-American Orchestra NBC**  
**WCAO—Asbury Park Casino Orchestra CBS**  
**5:30 P. M.**  
**WBAL—Old Pappy—Negro Impersonations NBC**  
**WFBR—Variety Interlude**  
**WCAO—Sally Sam, the Sailor CBS**  
**WCBM—Musical Gems**  
**5:40 P. M.**  
**WFBR—Golden Moments—Dr. LaBorwit**  
**5:45 P. M.**  
**WBAL—Wander Program—Little Orphan Annie—Children's Playlet NBC**  
**WCAO—Reis and Dunn, with Fred Berren's Orchestra CBS**  
**WFBR—Russ Columbo's Orchestra NBC**  
**WCBM—Lost and Found period**  
**6:00 P. M.**  
**WBAL—Wheatena Serial—Raising Junior NBC**  
**WCAO—The Globe Trotter—News Reports**  
**WCBM—Piano solos—Jesse Burns**

## SPECIALS FOR THURSDAY

**4:00 P. M. .... WCAO—United States Army Band CBS**  
**7:45 P. M. .... WFBR—Blue Coal Minstrel Revue NBC**  
**8:00 P. M. .... WBAL — Fleischman Program — Rudy Vallee's Orchestra NBC**  
**9:00 P. M. .... WCAO—Vapex Presents the Mills Bros. CBS**

**10:30 A. M.**  
**WBAL—A. & P. Program—Food talk by Colonel Goodbody NBC**  
**WCAO—Melody Parade CBS**  
**WCBM—Jack Decker, Organist**  
**WFBR—Musical Bells**  
**10:45 A. M.**  
**WBAL—R. B. Davis Program—Mystery Chef NBC**  
**WCAO—Beauty Talk—Barbara Gould CBS**  
**WFBR—Morning Serenaders NBC**  
**11:00 A. M.**  
**WBAL—Forecast School of Cookery NBC**  
**WCAO—Morning Moods—Vincent Sorey's Orchestra CBS**  
**WCBM—Heart and Home Service Program**  
**WFBR—Melodic Gems NBC**  
**11:15 A. M.**  
**WBAL—Singing Strings—Blaufuss Ensemble NBC**  
**WFBR—Lloyd Bloxham, tenor**  
**11:30 A. M.**  
**WCAO—New York Med. Society Program—Talk CBS**  
**WCBM—Merchants' Air Review**  
**WFBR—Home Topics Club**  
**11:45 A. M.**  
**WBAL—Jill and Judy NBC**  
**WCAO—Tenor solos—Ben Alley CBS**  
**12:00 Noon**  
**WBAL—The Merrie Men Quartet NBC**  
**WCAO—Don Bigelows' Orchestra CBS**  
**WCBM—Chick Newell's Palais d'Or Orchestra**  
**WFBR—General Electric Home Circle NBC**  
**12:15 P. M.**  
**WBAL—Dramatic skit, with Pat Barnes NBC**  
**WFBR—Variety Interlude**  
**12:30 P. M.**  
**WBAL—National Farm and Home Hour NBC**  
**WCBM—Howard Furniture Co.'s Program**  
**WCAO—Paul Billotti's Orchestra**  
**1:00 P. M.**  
**WFBR—Lord Baltimore Hotel Orchestra**  
**WCBM—String Novelties—Todd and Craig**  
**1:15 P. M.**  
**WCBM—The Connecticut General**  
**1:30 P. M.**  
**WBAL—Don Pedro's Orchestra NBC**  
**WCAO—Talk on bridge by Mrs. Emery**  
**WFBR—Celestial Restaurant Orchestra**  
**1:45 P. M.**  
**WCAO—Savoy Plaza Orchestra CBS**  
**2:00 P. M.**  
**WFBR—Historical Reminiscences**  
**WBAL—Food Talk by Mrs. J. Heath NBC**

**WFBR—Wetzler Program—Songs and music**  
**6:15 P. M.**  
**WCAO—Hotel Bossert Orchestra CBS**  
**WBAL—The Masqueraders**  
**WCBM—Try-Me Movie Contest**  
**WFBR—Majestic Melody Man**  
**6:30 P. M.**  
**WCAO—Songs by Connie Boswell CBS**  
**WCBM—The Squawk Owl**  
**WFBR—Musical Gems**  
**6:45 P. M.**  
**WBAL—Literary Digest Topics in Brief—Lowell Thomas NBC**  
**WCAO—Norge Refrigerator Program—Vocal and piano solos**  
**WCBM—Sports Scrap Book—Lee Davis**  
**WFBR—Swift Program—The Stebbins Boys NBC**  
**7:00 P. M.**  
**WBAL—Pepsodent Program—Amos 'n' Andy NBC**  
**WCAO—Wrigley Program—Myrt and Marge—CBS**  
**WCBM—Valley Inn Orchestra**  
**WFBR—Vermont Lumber Jacks—Vocal trio NBC**  
**7:15 P. M.**  
**WBAL—Tastyest Jesters—Pep, Vim and Vigor NBC**  
**WCAO—Cremo presents Bing Crosby CBS**  
**WFBR—The Campbell Orchestra NBC**  
**7:30 P. M.**  
**WCAO—Kaltenborn Edits the News CBS**  
**WBAL—Phil Cook, the Quaker Man NBC**  
**WCBM—Rambling Six Orchestra**  
**WFBR—Prince Albert Quarter Hour—Paul Van Loan's Orchestra NBC**  
**7:45 P. M.**  
**WBAL—Business Talk by Merle Thorpe NBC**  
**WCAO—Carnel Quarter Hour—Morton Downey, Tony Wons—Jacques Renard's Orchestra CBS**  
**WFBR—Blue Coal Minstrel Revue NBC**  
**8:00 P. M.**  
**WFBR—Fleischman Hour—Rudy Vallee's Orchestra NBC**  
**WBAL—Dixie Spiritual Singers—Negro chorus NBC**  
**WCAO—The Bath Club, with Margaret Santry CBS**  
**WCBM—Charles Russell's Orchestra**  
**8:15 P. M.**  
**WBAL—Norwood Coffee Concert**  
**WCAO—Phillips Magnesia Program—Abe Lyman's Band CBS**

## Broadcasting Has Created 'Radio' Widows

Just a conversation.  
 "Poor dear; is her husband dead?"  
 "Oh no; he's a radio announcer."  
 Such talk is not a bit unlikely these days for, lo, we have with us now the radio widows—poor, lonely, forsaken women, martyrs to the era of scientific progress. For such hours as the radio announcer, musician and operator must keep! No woman could keep up with them and remain the same.

"I haven't been a single place with my wife since I went into radio work except to an occasional movie between programs," one of WBAL's musicians confessed recently. "You see, I'm down at the studio every night in the week and when I'm not actually on the air, I'm in rehearsal. So you see how little time we married radio men have with our families."

And it's the same all through the ranks of radio broadcasting. According to a story heard the other day, a radio husband telephoned his wife to meet him for dinner, then asked a mutual friend to go along to identify him. Still another one, according to studio gossip, is about an announcer-soloist, who, meeting his wife unexpectedly on the street with a young man, was about to assert his husbandly rights when the stranger leaned forward and said:

"Hello, dad; give me a light, will you?"

Of course, just as Mark Twain once said about the notice of his premature death, these stories may be "greatly exaggerated," but not to any great extent. Incidentally, forward looking sociologists may rejoice in the fact that one of the generally conceded causes for divorce, namely, seeing too much of each other, has been summarily removed by the little device known as the microphone.

## Michael Weiner's Son A Violin Prodigy

Michael Weiner, orchestral supervisor at WBAL, was a prodigy, his exceptional musical talent as a mere lad attracting the attention of those in charge of the Music Settlement School in Baltimore where he received his preliminary musical training.

Now Weiner has a five-year old son who is likewise a violin prodigy.

## Sol Sax Versatile

Sol Sax, audition supervisor and staff pianist at WBAL, had been on the professional stage and appeared as a Chataqua artist prior to coming to the radio field. He is a natural entertainer, being an excellent dancer, a splendid mimic and with a flair for showmanship on the air which few radio artists have.

**'blue coal'**  
**MINSTREL SHOW**  
 Every Thursday **WFBR**  
 7:45 P. M.  
 See Page 5 for Prize Announcement

**Dr. Albert La Borwit**  
 Baltimore's Leading Chiropractor and Physiotherapist  
 INAUGURATES A  
**New Health Club Service**  
 \$12.00 Includes  
 One month's Chiropractic and Physiotherapy Treatments  
 For Further Information See  
**DR. ALBERT LA BORWIT**  
 504 Park Bank Bldg. Top Floor  
 Corner Lexington and Liberty Sts.  
 Plaza 3731 Hours 9 a.m. to 5 p.m.

## Radio Guide

### Advertising Rates

(Effective December 7, 1931)

#### General Advertising

Per agate line, Baltimore edition flat 12c  
 These are temporary rates on a guaranteed average net paid circulation of 15,000, Baltimore Edition for issues printed during the first three months of 1932. Orders for advertising at these rates accepted only for insertion in issues printed during the first three months of 1932.

#### Mechanical Requirements

Pages are 4 columns wide by 200 agate lines deep—800 agate lines to the page.  
 1 page (800 lines) . . . 9 1/2 x 14 1/2 inches  
 1 column (200 lines) . . . 2 1/2 x 14 1/2 inches  
 2 columns (400 lines) . . . 4 1/2 x 14 1/2 inches  
 3 columns (600 lines) . . . 7 x 14 1/2 inches  
 Half-tones 65 screen. Mats or Stereotypes not acceptable.

#### Issuance and Closing Dates

Published weekly—issued on Thursday and dated one week ahead of the following Saturday.

Black and white forms close for final release of copy on first Monday preceding date of issuance. Copy must be received not later than Thursday one week preceding date of issuance if proofs are wanted for O. K.; earlier if proofs must be sent out of city or cuts made.

**Radio Guide, Inc.**  
 520 W. Pratt St., Baltimore, Md.  
 Telephone: Plaza 4346

## THURSDAY PROGRAMS—Continued

**8:30 P. M.**  
**WCAO—La Palina presents Kate Smith—Swanee Songs CBS**  
**WCBM—To be Announced**  
**8:45 P. M.**  
**WBAL—Sisters of the Skillet—Songs and Dialogue NBC**  
**WCAO—Cream of Wheat Program—Angelo Patri CBS**  
**9:00 P. M.**  
**WBAL—Blackstone Plantation with Julia Sanderson and Frank Crumit NBC**  
**WCAO—Vapex Program—Mills Bros CBS**  
**WCBM—Syncopated Silhouettes**  
**WFBR—Arco Dramatic Musicale NBC**  
**9:15 P. M.**  
**WCAO—Household Finance program—String Ensemble**  
**9:30 P. M.**  
**WBAL—Maxwell House Ensemble NBC**  
**WCAO—Street and Smith's Love Story CBS**  
**WFBR—RCA Musical Review**  
**WCBM—Cotton Club Orchestra**  
**9:45 P. M.**  
**WFBR—The Spotlight Review**  
**10:00 P. M.**  
**WCBM—Club Madrid Orchestra**  
**WBAL—A. & P. Dance Orchestra—Harry Horlick, Conductor NBC**

**WCAO—Hart, Schaffner and Marx Trumpeters CBS**  
**WFBR—Lucky Strike Orchestra—Walter Winchell NBC**  
**10:30 P. M.**  
**WBAL—Super Suds Girls—Clara, Lu and Em—Comedy Gossip NBC**  
**WCAO—Chesterfield Program—Alexander Gray with Nat Shilkret's Orch. CBS**  
**WCBM—Nutty Nite Club Orchestra**  
**10:45 P. M.**  
**WBAL—Paris Night Life NBC**  
**WCAO—Songs by Jack Miller CBS**  
**11:00 P. M.**  
**WBAL—When Some of Us Were Twenty-one**  
**WFBR—Sherry's Orchestra**  
**WCBM—Chick Newell's Palais d'Or Orchestra**  
**WCAO—Master Music Room**  
**11:15 P. M.**  
**WCAO—Howard Barlow's Orchestra CBS**  
**11:30 P. M.**  
**WFBR—Hotel Belvedere Orchestra**  
**WBAL—The Three Doctors—Comedy and songs NBC**  
**WCBM—Club Ritz Orchestra**  
**WCAO—Leon Belasco's Orchestra CBS**  
**11:45 P. M.**  
**WBAL—Organ solos—Lew White NBC**  
**WCAO—George Olsen's Orchestra CBS**

# FRIDAY PROGRAMS—JANUARY 8

7:00 A. M.  
 WCAO—Early Risers Musical Clock  
 WCBM—Morning Melodies  
 WFBR—Time Service Program  
 7:30 A. M.  
 WBAL—A Song for Today NBC  
 WCBM—May Co's Mary Ann Kiddie Klub  
 7:45 A. M.  
 WBAL—Cream of Wheat Program—Jolly Bill and Jane NBC  
 WCAO—Kiddie Club  
 8:00 A. M.  
 WBAL—On the 8:15—Comedy and Songs NBC  
 WCAO—Paul Billotti's Orchestra  
 WCBM—Morning Glories  
 WFBR—Quaker Early Birds—Gene and Glenn NBC  
 8:15 A. M.  
 WFBR—Morning Devotions NBC  
 8:30 A. M.  
 WFBR—Cheerio NBC  
 WBAL—Sunbirds—String Ensemble NBC  
 8:45 A. M.  
 WBAL—Blautuss Ensemble NBC  
 WCAO—Old Dutch Girl—Newsy Jingles CBS  
 WCBM—News Flashes  
 9:00 A. M.  
 WBAL—The Laugh Club—Tom Brennie NBC  
 WCAO—Madison Singers CBS  
 WCBM—Musical Gems  
 WFBR—Melody Gems NBC  
 9:15 A. M.  
 WBAL—Morning Glories NBC  
 WFBR—Tom Waring's Troubadours NBC  
 9:30 A. M.  
 WBAL—Montgomery Ward Program—Irma Glen, organist NBC  
 WCAO—Tony's Scrapbook—Readings by Tony Wons CBS  
 9:45 A. M.  
 WBAL—Miracles of Magnolia—Negro Monologue NBC  
 WCAO—The Rhythm Kings, CBS  
 WCBM—Union Mutual Musicale  
 WFBR—Classic Quarter Hour  
 10:00 A. M.  
 WBAL—Shopping with Nancy Turner  
 WCAO—Oxol Trio—Grant, Graham and Coughlin CBS  
 WCBM—Merchants' Air Review  
 WFBR—Musical Bells—Walter Franklin  
 10:15 A. M.  
 WBAL—Harold Stokes' Orchestra NBC  
 WCAO—Bond Bread Program—Julia Sanderson and Frank Crumit CBS  
 WFBR—To be Announced  
 10:30 A. M.  
 WBAL—A. & P. Program—Food Talk by Col. Goodbody NBC

2:15 P. M.  
 WCAO—Ann Leaf at the Organ CBS  
 WBAL—Radio Troubadours—Harold Stokes' Orchestra NBC  
 2:30 P. M.  
 WBAL—Piano solos—Archie Eaton  
 WCAO—American School of the Air CBS  
 2:45 P. M.  
 WBAL—Mormon Temple Choir NBC  
 WFBR—Piano solos—Lolita Gainsborg  
 3:00 P. M.  
 WFBR—Women's Radio Review NBC  
 WCAO—U. S. Marine Band CBS  
 3:15 P. M.  
 WBAL—Rochester Philharmonic Symphony NBC  
 3:30 P. M.  
 WCAO—Songs by Arthur Jarrett CBS  
 3:45 P. M.  
 WCAO—Columbia Educational Features CBS  
 4:00 P. M.  
 WBAL—Rhythmic Serenade NBC  
 WCAO—Light Opera Gems CBS  
 WFBR—Betty Moore Decorating Notes NBC  
 4:15 P. M.  
 WBAL—Radio Guild—Drama NBC  
 WFBR—Twilight Voices—Mixed Quartet NBC  
 4:30 P. M.  
 WCAO—Baltimore Public School Program  
 WFBR—Contract Bridge—Mrs. A. Randall  
 5:00 P. M.  
 WCAO—Curtis Institute of Music Program CBS  
 WCBM—Rhythm and Harmony  
 WFBR—Police Alarms—Evening Variety Program  
 5:15 P. M.  
 WBAL—Swanee Serenaders—Harold Stokes' Orchestra NBC  
 5:30 P. M.  
 WFBR—Variety Interlude  
 WBAL—Old Pappy—Negro Impersonations NBC  
 WCAO—Uncle Olie's Kre-Mel Gang CBS  
 WCBM—Lost and Found  
 5:40 P. M.  
 WFBR—Golden Moments—Dr. La Borwit  
 5:45 P. M.  
 WBAL—Wander Program—Little Orphan Annie—Children's Playlet NBC  
 WCAO—The Lone Wolf Tribe CBS  
 WFBR—Russ Columbo's Orchestra NBC  
 WCBM—Blum's Program—The Old Stager  
 6:00 P. M.  
 WBAL—Wheatena Serial—Raising Junior NBC  
 WCAO—The Globe Trotter  
 WFBR—Celestial Restaurant Orchestra

## SPECIALS FOR FRIDAY

11:00 A.M. .... WFBR—Music Appreciation Hour—Walter Damrosch, conducting NBC  
 3:15 P.M. .... WBAL—Rochester Philharmonic Orchestra NBC  
 7:45 P.M. .... WCAO—Camel Quarter Hour—Morton Downey - Tony Wons - Jacques Renard's Orchestra NBC  
 10:30 P.M. .... WFBR—RKO Theatre of the Air NBC

WCBM—Jack Decker, Organist  
 WFBR—Continental Trio  
 10:45 A. M.  
 WBAL—Consolaires—Irma Glen, organist NBC  
 WCAO—Speed and Double Speed—Children's Drama  
 WFBR—Itumford Radio Cooking School  
 11:00 A. M.  
 WBAL—Musical Appreciation Hour—Walter Damrosch, conducting NBC  
 WCAO—German Leader CBS  
 WCBM—Heart and Home Service Program  
 WFBR—Music Appreciation Hour—Walter Damrosch, conducting NBC  
 11:15 A. M.  
 WCAO—The Captivators CBS  
 11:30 A. M.  
 WCBM—The Great Scott Music Box  
 11:45 A. M.  
 WCAO—Tenor solos—Ben Alley CBS  
 WCBM—Le Roy McKnew, pianist  
 12:00 Noon  
 WBAL—Farm Hints—University of Maryland  
 WCAO—Don Bigelow's Orchestra CBS  
 WCBM—Chick Newell's Palais d'Or Orchestra  
 WFBR—General Electric Home Circle NBC  
 12:15 P. M.  
 WBAL—Dramatic skit, with Pat Barnes NBC  
 WFBR—Variety Interlude  
 WCAO—Maryland Federation of Women's Clubs program  
 12:30 P. M.  
 WBAL—National Farm and Home Hour NBC  
 WCAO—Paul Billotti's Salon Orchestra  
 WCBM—Howard Furniture Co.'s Program  
 WFBR—Lord Baltimore Hotel Orchestra  
 1:00 P. M.  
 WCAO—Pabst-lett Varieties CBS  
 WCBM—Tenor Solos—Le Roy Kiser  
 WFBR—To be Announced  
 1:15 P. M.  
 WCAO—Paul Billotti's Salon Orchestra  
 WCBM—The Connecticut General  
 1:30 P. M.  
 WFBR—Celestial Restaurant Orchestra  
 WBAL—The Arundels  
 WCAO—Ritz Carlton Hotel Orchestra CBS  
 2:00 P. M.  
 WFBR—To be Announced NBC  
 WBAL—Poetry recital by the Bentztown Bard  
 WCAO—Comedy and Songs—The Funny Boners CBS

6:15 P. M.  
 WBAL—Peter Van Steeden Orchestra NBC  
 WCBM—Bass solos—Henry Cschenk  
 WCAO—Asbury Park Casino Orchestra CBS  
 6:25 P. M.  
 WBAL—Talk by John B. Kennedy NBC  
 6:30 P. M.  
 WFBR—To be Announced  
 WCAO—The Royal Vagabonds NBC  
 WCAO—John Kelvin, Irish Tenor CBS  
 WCBM—Weber's Musical Memory Test  
 6:45 P. M.  
 WBAL—Literary Digest Topics in Brief—Lowell Thomas NBC  
 WCAO—Gunther Brewing Company Program  
 WCBM—Koven's Polish Period  
 7:00 P. M.  
 WBAL—Pepsodent Program—Amos 'n' Andy NBC  
 WCAO—Wrigley Program—Myrt and Marge CBS  
 WFBR—Tom McNulty—Irish Songs  
 7:15 P. M.  
 WBAL—Boscul Moments NBC  
 WCAO—Cremo presents Bing Crosby CBS  
 WCBM—Sports Scrap Book—Lee Davis  
 WFBR—The Campbell Orchestra NBC  
 7:30 P. M.  
 WBAL—Phil Cook, the Quaker Man NBC  
 WCAO—Amoco program—The Motoring Minstrel  
 WCBM—Moses Kahn's Old Town Syncopators  
 WFBR—Prince Albert Quarter Hour—Paul Van Loan's Orchestra NBC  
 7:45 P. M.  
 WBAL—The Esso Program—Bob Ripley "Believe It or Not" NBC  
 WCAO—Camel Quarter Hour—Morton Downey, Tony Wons—Jacques Renard's Orchestra CBS  
 WFBR—The Dinkeldorfers—Comedy skit  
 8:00 P. M.  
 WBAL—Nestle's Program—Guest Artist with Leonard Joy's Orchestra NBC  
 WCAO—The Bath Club, with Margaret Santry CBS  
 WCBM—Rosenthal's Foot Teasers  
 WFBR—Harvey Alexander's Band  
 8:15 P. M.  
 WCAO—Singin' Sam, the Barbasol Man CBS  
 WFBR—Loew's Century Stars  
 8:30 P. M.  
 WBAL—Smith Brothers—Trade and Mark NBC

# Studio Gossip

By THE WANDERER

Who is the victim of this little piece of gossip—Perry Alexander or a certain blonde young lady who works in a department store?

Frankly, we have arrived at no decision and pass the story along to you. Here it is.

The young lady with blonde hair arrived at her desk one morning and was soon engaged in conversation with her employer who was sponsoring a series of programs over WCBM announced by Perry Alexander. Perry, you know, tells the radio audience that he is the world's worst announcer. We have nothing to say about his judgment, so on with the story. The employer asked the employee what she thought of the program.

"Well," she replied, after some hesitation, "I guess the program was O. K., but my husband said that he thinks Perry Alexander is the world's worst announcer. He declares that if he ever meets him he is liable to punch him in the nose just for luck."

At this juncture, dear readers, a dapper young man stepped into the room with a cheery greeting. The employer, with a twinkle in his eye, introduced her to the young employee as "Mr. Perry Alexander of WCBM."

The twinkle became more pronounced as he added:

"Mrs. ———'s husband declares, Perry, that you are so terrible as an announcer that he might punch you in the nose when he meets you. What have you got to say about that?"

Of course, the blonde girl blushed beautifully as blondes do, but she

gave no ground and looked Perry straight in the eye. After some deliberation Perry replied:

"Well, Mrs. ——— there are quite a few persons who don't like me, but there are many who do."

So, my readers, figure it out.

\* \* \*

While snooping around WFBR the other day, heard through the underground channels that Larry Harding, announcer, had resigned. Heard further that he is dickering with a station just a short distance South of Baltimore. Why has he resigned and what station is he dickering with? Can't tell you just yet.

\* \* \*

The boys and girls at WCAO are just about acclimated to the decided English accent of John Carnaghan who has cast his lot with that station. John, you know, has quite some ability as an actor, so I guess the continuity writers of WCAO will now have to be writing parts for an Englishman in their radio dramas and comedies. Would love to hear John doing a piece in Jewish dialect.

\* \* \*

Lee Davis at WCBM is always kicking about hearing other people's burdens. Says that before radio began broadcasting sports events, the sporting editors of the newspapers were the only ones who were pestered for passes to shows. Now, he swears and declares, half of his fan mail contains requests for ducats. Well, dear readers, why not make his misery complete by flooding him with requests for ducats. I heard that he really does get quite a few of them to give away.

## But Wears Trousers And Coat

Harvey Hays, NBC dramatic star, began acting in amateur theatricals produced by English residents in a deserted skating rink at Allahabad, India. Although born in America, Hays grew up in Ghandi's country.

## Depression Gag No. 88,666

Heard in an NBC studio:  
 Walter Scanlon: Do the eskimos have depression?

Billy Murray: Sure! Their assets are frozen most of the time.

Open Evenings Test Call \$1.00

## WINTERS JONES

Radio Engineering Service  
 15 YEARS EXPERIENCE  
 318 E. North Ave. University 7888

## Dr. Albert La Borwit

Baltimore's Leading Chiropractor and Physiotherapist  
 INAUGURATES A  
**New Health Club Service**  
**\$12.00** Includes  
 One month's Chiropractic and Physiotherapy Treatments  
 For Further Information See  
**DR. ALBERT LA BORWIT**  
 504 Park Bank Bldg. Top Floor  
 Corner Lexington and Liberty Sts.  
 Plaza 3731 Hours 9 a.m. to 5 p.m.

## FRIDAY PROGRAMS—Continued

WCAO—March of Time CBS  
 WCBM—Kaufman's Musical Trio  
 WFBR—Spotlight Revue  
 8:45 P. M.  
 WBAL—Sisters of the Skillet—Comedy and Songs NBC  
 WCBM—Hecht's Reliable Polish Program  
 9:00 P. M.  
 WBAL—Friendship Town CBS  
 WFBR—Cliquot Club Eskimos NBC  
 WCAO—Pillsbury Pageant CBS  
 9:15 P. M.  
 WCBM—Piano solos—Jerome Washington  
 9:30 P. M.  
 WCAO—Woodbury Soap Program—To the Ladies CBS  
 WBAL—Armour Program—Vocal and orchestral music NBC  
 WCBM—Radio Carnival  
 WFBR—Pond's Dance Orchestra NBC  
 9:45 P. M.  
 WCAO—Jarman Shoe Program—Friendly Five Footnotes CBS  
 10:00 P. M.  
 WBAL—Paul Whiteman's Paint Men—Allied Quality Paint Group NBC  
 WCAO—Grand Opera Miniatures CBS  
 WCBM—Club Madrid Orchestra

WFBR—Artists Service Program NBC  
 10:30 P. M.  
 WBAL—Super Suds Girls—Clara, Lu and Em—Comedy Gossip NBC  
 WCAO—Chesterfield Program—Alexander Gray with Nat Shilkret's Orch. CBS  
 WCBM—Nitty Nite Club Orchestra  
 WFBR—RKO Theatre of the Air NBC  
 10:45 P. M.  
 WBAL—Waves of Melody—Vocal and orchestral music NBC  
 WCAO—Tenor solos—Arthur Tracey CBS  
 11:00 P. M.  
 WCAO—Organ Music—records  
 WBAL—Slumber Music—String Ensemble NBC  
 WCBM—Oscar Appel's Orchestra  
 WFBR—Celestial Restaurant Orchestra  
 11:15 P. M.  
 WCAO—Howard Barlow's Sympathy Orchestra CBS  
 11:30 P. M.  
 WBAL—Jack Denny's Orchestra NBC  
 WCAO—George Olsen's Orchestra CBS  
 WCBM—Cotton Club Orchestra  
 WFBR—Sherry's Orchestra  
 12:00 Midnight  
 WCBM—Club Ritz Orchestra

# SATURDAY PROGRAMS—JANUARY 9

**7:00 A. M.**  
 WCAO—Early Risers Musical Clock  
 WCBM—Morning Melodies  
 WFBR—Time Service Program

**7:30 A. M.**  
 WBAL—A Song for Today NBC  
 WCBM—May Co.'s Mary Ann Kiddie Klub

**7:45 A. M.**  
 WBAL—Cream of Wheat Program—Jolly Bill and Jane NBC  
 WCAO—Kiddie Club

**8:00 A. M.**  
 WBAL—On the 8:15—Comedy and Songs NBC  
 WCAO—Paul Billotti's Orchestra  
 WCBM—Morning Glories

**8:15 A. M.**  
 WBAL—Phil Cook the Quaker Man NBC  
 WFBR—Morning Devotions NBC

**8:30 A. M.**  
 WBAL—Sunbirds—String Ensemble NBC  
 WFBR—Cheerio NBC

**8:45 A. M.**  
 WBAL—Blaufuss Ensemble NBC  
 WCBM—News Flashes

**9:00 A. M.**  
 WBAL—Tom Bremie—The Laugh Club NBC  
 WCAO—The Commuters—Vincent Sorey's Orchestra CBS  
 WCBM—Musical Gems  
 WFBR—Le Trio Charmante NBC

**9:15 A. M.**  
 WBAL—Morning Glories—String Ensemble NBC  
 WFBR—Tom Waring's Troubadours NBC

**9:30 A. M.**  
 WCAO—Tony's Scrapbook—Readings by Tony Wons CBS  
 WBAL—Montgomery Ward Program—Irma Glen, Organist NBC

**9:45 A. M.**  
 WBAL—Miracles of Magnolia—Negro Monologue NBC  
 WCAO—Songs of the Outdoors CBS  
 WCBM—Organ solos—Jack Decker  
 WFBR—Piano Moods

**10:00 A. M.**  
 WBAL—Harold Stokes' Orchestra NBC  
 WCAO—Children's Carnival  
 WCBM—May Co.'s Mary Ann Kiddie Klub  
 WFBR—Musical Bells

**10:15 A. M.**  
 WFBR—Breen and de Rose NBC

**10:30 A. M.**  
 WBAL—A. & P. Program—Food talk by Colonel Goodbody NBC  
 WFBR—Tiny Tot Revue

**10:45 A. M.**  
 WBAL—Consolaires—Irma Glen, organist NBC

**5:00 P. M.**  
 WBAL—Colorado Cowboys NBC  
 WCAO—Eddie Duchin's Orchestra CBS  
 WCBM—Rhythm and Harmony  
 WFBR—Police Alarms—Evening Variety

**5:15 P. M.**  
 WCBM—Lost and Found

**5:30 P. M.**  
 WFBR—Contract Bridge—E. V. Shepard NBC  
 WBAL—Old Pappy—Negro impersonations NBC

**5:45 P. M.**  
 WCAO—Bert Lown's Orchestra CBS  
 WCBM—Heart and Home Service Program

**5:45 P. M.**  
 WBAL—Wander Program—Little Orphan Annie—Children's Playlet NBC  
 WFBR—Ballad Singers—Mixed Quarter NBC

**6:00 P. M.**  
 WBAL—Wheatena Serial—Raising Junior NBC  
 WCAO—The Globe Trotter—News Reports  
 WCBM—Chick Newell's Palaid d'Or Orch.  
 WFBR—Celestial Restaurant Orchestra

**6:15 P. M.**  
 WBAL—WBAL Trio  
 WCAO—Dave Abram's Orchestra CBS

**6:30 P. M.**  
 WBAL—The Old Topper—Ray Perkins NBC  
 WCAO—Don Bigelow's Orchestra CBS  
 WFBR—The Singing Troubadour NBC  
 WCBM—Piano solos—Godfrey Harris

**6:45 P. M.**  
 WFBR—To be Announced  
 WBAL—Studio Program  
 WCAO—Chevrolet Chronicles—records  
 WCBM—Sports Scrap Book—Lee Davis

**7:00 P. M.**  
 WBAL—Pepsodent Program—Amos 'n' Andy NBC  
 WFBR—Lord Baltimore Hotel Orchestra

**7:15 P. M.**  
 WBAL—Tastyest Jesters—Pep, Vim and Vigor NBC  
 WCAO—Cremo presents Bing Crosby CBS

**7:30 P. M.**  
 WBAL—Radio Drama  
 WCAO—Reis and Dunn—Comedy and Songs CBS  
 WCBM—Todd and Craig—String Novelties  
 WFBR—Prince Albert Quarter Hour—Paul Van Loan's Orchestra NBC

**7:45 P. M.**  
 WCBM—Le Roy Kiser's Orchestra  
 WBAL—Hollywood Nights NBC  
 WCAO—Camel Quarter Hour—Morton Downey, Tony Wons—Jacques Renard's Orchestra CBS  
 WFBR—The Home Builders' Program

# ELISE LEE COHEN OF WBAL

Time was when you had to go to the theater to see your favorite star in the spot-light on the stage. Now you turn the dial of the radio receiving set in your home and focus your own spot-light on your favorites.

Among those on whom thousands of unseen spot-lights are being focused each week is Elise Lee Cohen, who appears every Saturday night in WBAL's Radio Drama, from 7:30 to 7:45 o'clock. Miss Cohen has had much experience in

tracting much radio attention, is a series of Short Stories, which Miss Cohen herself broadcasts.

During the Radio Dramas, one-act comedies, duologues, and sketches of various themes are being presented.

Among those who assist Miss Cohen in broadcasting these programs are John Wilbourn and Walter N. Linthicum, both of whom are members of WBAL's announcing staff. The series opened by presenting an episode from the



ELISE LEE COHEN

dramatics, having played with a stock company and appeared as guest recitalist along the French Riviera and in this and other cities in her own country. She studied stage technique and voice culture in New York and, later, in London, and has had much success in her chosen field of work.

Three years ago, shortly after returning to her home in this city from a season abroad, Miss Cohen was appointed afternoon program supervisor of WBAL, and she is in charge of securing and arranging the various features for this station's daytime programs.

Among the features which are at-

tracting much radio attention, is a series of Short Stories, which Miss Cohen herself broadcasts.

During the Radio Dramas, one-act comedies, duologues, and sketches of various themes are being presented.

Among those who assist Miss Cohen in broadcasting these programs are John Wilbourn and Walter N. Linthicum, both of whom are members of WBAL's announcing staff. The series opened by presenting an episode from the

dramatics, having played with a stock company and appeared as guest recitalist along the French Riviera and in this and other cities in her own country. She studied stage technique and voice culture in New York and, later, in London, and has had much success in her chosen field of work.

Three years ago, shortly after returning to her home in this city from a season abroad, Miss Cohen was appointed afternoon program supervisor of WBAL, and she is in charge of securing and arranging the various features for this station's daytime programs.

Among the features which are at-

## SPECIALS FOR SATURDAY

- 11:00 A.M....WCAO—New York Children's Philharmonic Orchestra NBC
- 9:00 P.M....WBAL—Chicago Civic Opera Company NBC
- 10:00 P.M....WCAO—National Radio Forum CBS
- 11:00 P.M....WFBR—Sherry's Orchestra

**11:00 A. M.**  
 WBAL—Celebrated Sayings by famous people NBC  
 WCAO—New York Children's Philharmonic Orchestra CBS

**11:15 A. M.**  
 WFBR—Radio Household Institute—Drama

**11:30 A. M.**  
 WCAO—The Noon-Timers—Records  
 WBAL—Rhythm Ramblers—Harold Stokes Orchestra NBC  
 WCBM—Shadows and Sunbeams  
 WFBR—Keys to Happiness NBC

**11:45 A. M.**  
 WCBM—Merchant's Air Review  
 WBAL—Jill and Judy NBC

**12:00 Noon**  
 WBAL—The Merrie-Men—Quartet NBC  
 WCBM—Movie Melodies—State Theatre  
 WFBR—Variety Interlude

**12:15 P. M.**  
 WBAL—Dramatic skit, with Pat Barnes NBC

**12:30 P. M.**  
 WBAL—National Farm and Home Hour NBC  
 WCBM—Howard Furniture Co.'s Program

**1:00 P. M.**  
 WCBM—Varieties  
 WFBR—Lord Baltimore Hotel Orchestra

**1:15 P. M.**  
 WCBM—The Connecticut General

**1:30 P. M.**  
 WBAL—Don Pedro's Orchestra NBC  
 WCAO—Ritz Carlton Hotel Orchestra CBS  
 WFBR—Celestial Restaurant Orchestra

**2:00 P. M.**  
 WBAL—National Republican Club Saturday Discussion NBC  
 WCAO—Comedy and Songs—The Funny Boners CBS

**2:15 P. M.**  
 WCAO—Saturday Syncopators CBS

**2:30 P. M.**  
 WCAO—Columbia Salon Orchestra CBS

**3:00 P. M.**  
 WCAO—The Four Clubmen—Quartet CBS

**3:30 P. M.**  
 WBAL—Hello Marie—Comedy Skit NBC  
 WCAO—The Rhythm Kings CBS

**4:00 P. M.**  
 WBAL—Salon Music by the Calvertons  
 WCAO—Ann Leaf at the Organ CBS

**4:30 P. M.**  
 WCAO—Spanish Serenade—Vincent Sorey's Orchestra CBS

**8:00 P. M.**  
 WBAL—Chevrolet Chronicles  
 WCAO—Tastyest Gloom Chasers—Colonel and Budd CBS  
 WFBR—Civic Concerts Service Program NBC

**8:15 P. M.**  
 WCAO—Phillips Magnesia Orchestra—Abe Lyman's Orchestra CBS  
 WCBM—Stonewall Trio

**8:30 P. M.**  
 WCAO—Modern Male Chorus CBS  
 WBAL—Dance with Countess D'Orsay NBC  
 WCBM—Friendship Club of the Air  
 WFBR—National Advisory Council in Education NBC

**8:45 P. M.**  
 WCAO—Pompeian Make-up Box CBS

**9:00 P. M.**  
 WCAO—Stieff Artists Recital  
 WCBM—First Appearances  
 WBAL—Chicago Civic Opera NBC  
 WFBR—Goodyear Program NBC

**9:30 P. M.**  
 WCBM—Rev. R. W. Cooke and His Choir  
 WBAL—The First Nighter—Comedy skit NBC  
 WFBR—Club Valspar NBC  
 WCAO—Smith Bros. Program—Trade and Mark CBS

**9:45 P. M.**  
 WCAO—The Four Clubmen CBS

**10:00 P. M.**  
 WCAO—National Radio Forum CBS  
 WBAL—Russ Columbo's Orchestra NBC  
 WCBM—Club Madrid Orchestra  
 WFBR—Lucky Strike Orchestra—Walter Winchell NBC

**10:15 P. M.**  
 WBAL—Cameo Concert—Vocal and Xylophone Selections  
 WCAO—Chicago Variety Program CBS

**10:30 P. M.**  
 WBAL—Super Suds Girls—Clara, Lu and Em—Comedy Gossip NBC  
 WCBM—Nitty Nite Club—Ted Elmore's Orchestra

**10:45 P. M.**  
 WCAO—Chesterfield Program—Alexander Gray with Nat Shilkret's Orch. CBS

**11:00 P. M.**  
 WBAL—Twenty Fingers of Harmony NBC  
 WCAO—Songs by Jack Miller CBS

**11:00 P. M.**  
 WBAL—Slumber Music—Ludwig Laurier's String Ensemble NBC

## SATURDAY PROGRAMS—Continued

WCAO—Slim Martin and his All-American Orchestra—records  
 WCBM—Chick Newell's Palais d'Or Orchestra  
 WFBR—Sherry's Orchestra

**11:15 P. M.**  
 WCAO—Don Redman's Orchestra CBS

**11:30 P. M.**  
 WBAL—Spanish Serenade—Tito Carol NBC

WCAO—Leon Belasco's Orchestra CBS  
 WCBM—Cotton Club Orchestra  
 WFBR—Hotel Belvedere Orchestra

**11:45 P. M.**  
 WBAL—Jack Whiting—Musical comedy star NBC  
 WCAO—Enric Madiguera's Orchestra CBS

**12:00 Midnight**  
 WCBM—Club Ritz Orchestra

## PURELY PERSONAL

Frederick William Wile, Sr., Columbia's political analyst, goes to Europe the end of January, to broadcast the events of the Geneva conference.

Frances Lynch, NBC hostess, and William S. Raney, production manager, have announced their engagement. The wedding takes place in February.

Larry Funk of the Palais d'Or orchestra now announces his own programs.

Colonel Stoopnagle and Budd have been retained by CBS as a sustaining feature.

Harry Mack, formerly an announcer at WHOM and WNJ, has been assigned to afternoon announcing at Newark for WOR.

Mrs. Julian Heath of NBC is entering her ninth year with the company.

Fray & Braggiotti, the CBS two-piano favorites, recently played a concert for the Junior League. They start for the coast in January for special concert appearances with Maurice Chevalier in Los Angeles and San Francisco.

Ada Rosenberg, one of the secretaries in the CBS sales department, has announced her engagement to Louis Handin, prominent attorney.

Mrs. Harry (Mabel Voorhees) Hall, wife of the chief announcer at NBC-station KFWB in Hollywood, is visiting in New York. Mrs. Hall is head dramatic coach in the Hollywood School of the Theatre.

Emery Deutsch is planning a vacation trip to Bermuda in January or February.

Miss Sybil Turbille has joined the staff of WOR as secretary to Walter Neff, assistant director of sales. Miss Turbille succeeds Claire Pohley, who became Mrs. Neff on New Years Eve.

Adele Starr has moved from NBC's Cleveland station to the New York studios and the Gypsies program.

Ted Weems is scheduled for New Orleans at Mardi Gras time. He will remain down there for five weeks, then return to Chicago to play at the Trianon until the end of May.

Station WCAU, Philadelphia, of the Columbia chain is building a new station.

Paul Whiteman leaves the Edgewater Beach Hotel after the first of the year to circuit for RKO.

Alwyn Bach, NBC announcer and Diction Medal-man of last year, has secured a Great Dane.

Pat Kelly, supervisor of announcers at NBC, is comfortably installed in his new office.

Kate Smith started a three months vaudeville tour when she opened at the RKO Eighty-sixth Street, New York, last week.

"Aunt Jemima" (Tess Gardella) of the CBS, played an engagement at the Roxy theatre last week.

Joe White, the Silver Masked Tenor, was the guest of John McCormack at Mr. McCormack's recital in the Town Hall December 3.

Edwin H. Cohan, Technical director of CBS spent New Years in Havana.

The Crockett mountaineers have joined the force at WOR.

## Time Is Money— NBC Saves Money By Accurate Clocks

Time is literally money in the broadcasting business, and its value is so great that it is checked to the split second several times daily.

There are ninety-seven clocks in the NBC studios and offices at 711 Fifth Avenue, New York, and each one gives exactly the same time. They are set from the Naval Observatory clock in Arlington, Va., at noon and at 10 P. M.

Three times daily time signals are sent out by the NBC to its associated stations across the country, so that synchronization of programs may be perfect—not a second wasted.

In the broadcasting studios and control rooms clock-watching is a very important part of the day's work. Without it, network programs would be an impossibility.

Arlington gets its time from the naval experts who "shoot the sun" at frequent intervals. It is exact to a small fraction of a second. And Arlington sends out its signals by short-wave radio for five minutes twice daily, broadcasting the ticks of the clock.

The second-by-second time broadcast starts five minutes before the hour. The twenty-ninth second of each minute is eliminated so that the listening engineer is warned that thirty is next. From fifty-six to fifty-nine inclusive, the ticks again are eliminated to give warning that number sixty is next. The ten seconds immediately preceding the hour also are silent, and then the hour is sounded with a gong.

The same system of second-by-second clicks is used to send the signals to the NBC associate stations, except that in this case, instead of short-wave radio, the Morse wires which link the stations are utilized.

The ninety-seven clocks in the NBC Building are checked from the master chronometer immediately after the Arlington signals are received, to guard against any possibility of variation.

The absolute synchronization of network units is essential, so that one program may not overlap another. For instance, a station in Chicago may be scheduled to pick up a network program starting at 9 P. M. in the NBC studios in New York. Therefore the previous program must be off the air at exactly nine. The same accuracy is required in all the other eighty-four stations on NBC networks.

In addition, time must be allowed for the local stations announcements at stated intervals. The famous NBC chimes are the cue for these. As the chimes end, each station switches off the network and the announcer gives the call letters. The stations remain off exactly fifteen seconds, and then switch back onto the national chain again.

Because of this operation by the second, each of the NBC clocks is equipped with a large red second hand which circles the dial every minute, ticking off 86,400 seconds a day. Variation, according to NBC engineers, does not total more than five seconds in six months.

## MEET FELICE IULA

By BETTY LOU

Does your heart skip a beat or two when the announcer at WBAL tells you that Felice Iula and his orchestra are about to start their program? Mine does for I know that the next half hour will bring to me melodies that thrill me as no others do. Felice, in my opinion, has one of the best orchestras on the air.

On a visit to WBAL the other day I was introduced to the fascinating Felice who happened to be in the studio going over some music

grabbing our instruments, rushing from the theater to the studios and rushing back again. There were twenty-two of us and getting placed in the small studio was a problem. There was no rational grouping, we just squeezed around the microphone on boxes or chairs as best we could. I did most of my directing from the window ledge.

"Because our quarters were so cramped there was no room for individual music stands. As many as six of the men used one stand.



FELICE IULA

for a broadcast which he was to put on the air later. Girls, meeting him in person is much more thrilling than just looking at his photographs in newspapers and magazines. Hope his wife isn't jealous but I just can't help expressing my opinion.

Anyway, he took quite some time from his work to chat with me. Told me all about his earlier days in broadcasting, during the days when radio in Baltimore was just in its infancy. In fact he was directing an orchestra over the air when broadcasting was just beginning in this country. But let him tell about it.

"It was quite amusing," he related with a chuckle, "when I look back on those days. I often wonder how in the world we put it over.

"Perhaps you remember Baltimore's first radio station—the call letters were WEAR? Our orchestra was playing at a local theater when we were engaged to go on the air. The palatial and spacious studios of the present day were unheard of, the biggest room at WEAR being hardly larger than an announcer's booth in one of the present studios.

"Our programs from WEAR put on during our spare moments lasted only ten minutes. It was a matter of

The microphone, as we know it today, did not exist then. The thing into which we played our notes resembled a large horn and took up considerable space, adding to our discomfort.

"But it was fun and we did it solely for the glory in it—the glory being emphasized by fan letters from outside the city, something which in those days was considered an achievement in radio."

Felice said nothing about this but every one remembers that it was just a few years ago that he was voted one of the most popular leaders over the radio. His fan letters come from the various parts of the country where WBAL's strong signal reaches.

Some of the programs he directs are the McCormick Little Symphony, the Norwood Coffee Concert and that of the Baltimoreans and the Marylanders.

He is a modest fellow and refrains from talking about his personal accomplishments but little Gene Brown, who does WBAL's publicity work and numerous other things, told me a few things. In addition to preparing his own programs Felice compiles the orchestral arrangements for the station's music and composes a bit for his own pleasure in his spare moments. One of his compositions, "In A Little Garden," is still popular.

## 'Moonbeams' Get New Sponsor

WOR's famous Moonbeam program which has been on the air more than two years, daily, at 11:30 p. m., and one of that station's most popular programs, is now sponsored six times a week by the Lenthic Perfume Company. This resulted from an article which appeared in a recent issue of RADIO GUIDE asking why no sponsored program could be found on any station after 11 p. m. Moonbeams, over WOR, is probably the first of the late programs to find a sponsor. Apparently the time is a good one, for letters have been coming into the station in response to the sponsor.

George Shackley, music director of WOR, organized the program and still looks on it as one of his favorites. He has had fourteen different combinations of girls in the Moonbeam trio; Veronica Wiggins is the only one who has been with it since the start. Annette Simpson and Verna Osborne, both sopranos, have been with it more than a year. The trio sings almost entirely from manuscripts which are special ar-



VERNA  
OSBORNE

ANNETTE  
SIMPSON

rangements of various songs made by Mr. Shackley especially for the hour. Shackley has 5,000 manuscripts of this sort for his programs, 500 of which are for Moonbeams.

## CHATTING WITH EMERY DELITSCH

By Margaret Ann Fraser

Emery Deutsch took me to Long-champs for our chat, and over the fruit cup told me something about the Gypsy music for which he is famous.

"Having been born in Budapest and having heard the old folk songs of my country ever since I can remember, has made it possible for me to present them to the radio audience just as they are played in Hungary. I used to pick them out on my violin while my mother sang them to me."

His present program, Cafe Budapest, shows a different side of the gypsy than he has brought to the microphone hitherto. It depicts the gypsy indoors, while his other programs—the Gypsy Trail, the Romyan Patteran, the Hungarian Gypsies, etc.—have been tone pictures of the roving tribes. Emery has been with the Columbia Broadcasting Company since its first station out in Richmond Hill. Now he conducts about forty programs a week for the system. He works hard at his job for even his "day off" is spent at home arranging the programs for the coming week.

Emery was born on September 10th, 1904, and is known to be one of the youngest men to reach the place he now occupies. He is very unspoiled by his success—acts with complete naturalness. He has long clever hands which he uses to illustrate whatever he happens to be talking about, and to play with the silver on the table between courses. There is an air of "Old World" courtesy about him that his long

sojourn here in America has failed to eradicate, and there still is a slightly foreign intonation to his speech. He is tall, has dark wavy hair and remarkably clear blue eyes. He smokes a lot and moves in a quick restless manner. The love question he dismissed with a very pertinent statement.

"No, I have never been in love. I have always worked too hard to

give it much thought. Besides, I have not had to watch others enjoy the comforts of home from the sidelines as some men have, for I live with my family and I can always go home and have a good argument with my brother."

Emery is a broad-shouldered musician. During his school days he went in for all the sports, and made the Olympic team at the age of twenty. He never followed up his victory, however, for along came radio and he found the new field more attractive.

On the fifteenth of November, at 1:45 p. m. over WKRC-CBS, Emery conducted his little Gyp-

sy ensemble on their first program for the Venida Hairnet Co. The beautiful, somewhat sad folk songs played by this talented man and his band are sponsored, and can be heard every Sunday at that hour. Listen to his realistic music, and dream you too are in Vienna . . .

(Next week Louis Mason, the "Clem" of National Broadcasting Company's "Moonshine and Honneysuckle" program, will be interviewed by Miss Fraser.)



EMERY DEUTSCH

## Busiest Musical Director



Busiest of musickers is Sherman Keene, one of WOR's music directors and a tympani virtuoso.

Tune in any time at all on that station, and you're sure to hear some program with which Sherman is affiliated, either as maestro or as drum major.

Bamberger's, Macy's, The McCann period, the Musical Doctor, Selbert-Wilson, or any one of a dozen sustaining programs, all are directed by this batoneer, who, also officiates at the traps while he's directing. A special platform has been built for this purpose.

## Did You Know That—

Bing Crosby once clerked in a law office in Spokane, Washington. Emery Deutsch was the first to introduce Gypsy music to radio listeners.

Morton Downey was fired from his job in an installment furniture store for singing during store hours. Barbara Maurel, Columbia contralto, speaks six languages.

Mark Warnow uses a pencil as a baton while conducting Roslyn Silber (Rosie Goldberg) won a competition in French at the Professional Children's School?

## Keeping Close Check

Commercial clients on radio stations keep a close check on the stations. Recently the Hoffman hour was on the air with a three-station hook-up to WOR. When the moment arrived for station identifications, the officials listened to WCAU, Philadelphia. What they thought they heard was: "Your announcer is Blue Anchor." "Blue Anchor" is a Philadelphia competitor. An investigation revealed the fact that the announcer's name is "Lew Anchor," but you won't hear him use it on the Hoffman hour any more.

## "Beautiful Thoughts"



Irma Glen plays an organ solo while a young studio admirer looks on. Miss Glen is heard on numerous NBC programs including "Beautiful Thoughts" broadcast daily at 9:30 a. m. over the WLW-NBC network.

## Quoting The Air Waves

### DEPRESSION MUSIC

"In times of stress people return to their folk music."

—Jesse Crawford, radio's Poet of the Organ.

### A CROONER FOR PRESIDENT

"What this country needs—is a singing President! I ask you—Can Coolidge or Hoover croon?"

—Eddie Cantor

### A SUBWAY SYMPHONY

"We reflect American life and vitality in our music and study the works of the masters. In Europe they play the masters and study the vitality of American music."

—B. A. Rolfe, orchestra director

### BELIEVE IT OR NOT

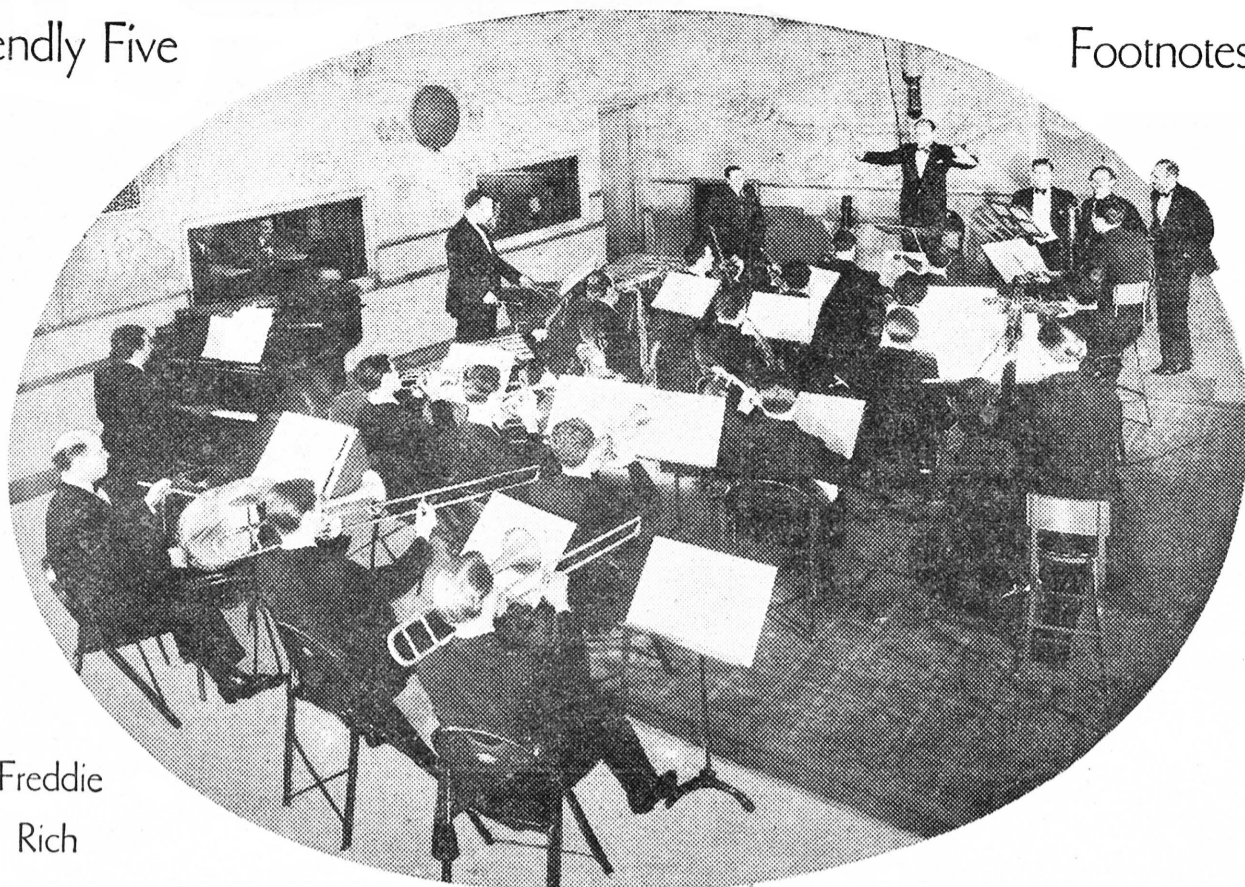
"It seems the longer I write the easier it comes."

—Gertrude Berg author of "The Goldbergs."

## SINGING ON THE 8:15



The Landt Trio and White, veteran radio entertainers, are heard each morning except Sunday at 8:00 A. M., over WLW-NBC network. Here they are, left to right: Karl, Jack and Dan Landt. Howard White their accompanist is at the piano.



Freddie Rich

Freddie Rich, one of CBS's most popular orchestra leaders is heard on many programs, including the "Friendly Five Footnotes" which is broadcast at 9:45 p. m., every Friday over the WKRC-CBS network. This photo, taken at the CBS studio shows Freddie Rich and his orchestra in action during one of their programs. This smiling young maestro comes from New York's East Side, and admits it. He graduated from the Damrosch Conservatory of Music as a talented pianist. He has a number of popular tunes to his credit and also is a talented arranger of musical numbers as well.

### Eliminate Auditions

Flatly and irrevocably this one writer herewith declares against auditions in radio studios, or anywhere else, for that matter.

Auditions are farces—all of them. We've attended dozens, and have yet to be present at a "discovery" of any significance whatsoever. Auditions, it appears, are the last resort of the untalented; when all else has failed, the aspirant to Radio fame submits to one.

A person with genuine talent soon finds an agent to interest himself in that person's future. Experience has shown that only once in a decade is a genius unearthed at those ludicrous sessions that occur regularly at radio stations, and result in nothing but a costly waste of everyone's time.

Granted that those in authority are qualified to pass on the merits or demerits of those who offer their wares. What then? Nothing ever happens but the routine taking of names and addresses, and the amateur then waits pitifully to receive the summons that never comes.

It's unfair to the deluded victim, to begin with. He or she must appear at some inconvenient time and waste hours waiting for The Opportunity. The aspirant to Radio laurels is then told to "make it snappy" and, under the tremendous nervous strain, usually is licked at the very start. Efforts of the amateurs are taken as jokes by the "holier-than-thou" critics who pass judgment.

It's all too pathetic—and meaningless. Let's stop it!

### A Fine Tribute To Amos 'n' Andy

To the Editor, RADIO GUIDE:

Are Amos and Andy all washed up?"

This question was asked in a recent issue of your magazine.

Do fans tune them out? Have they forgotten big-voiced King-fish, glib-tongue Pat Pending and all the rest of those simple air-folk who thrilled you a few tubes back?

There is a street that I call Pepsodent Alley and if you could walk down this highway about seven o'clock each night you'd catch every word and musical note of Amos and Andy's program. The Joneses house on the corner would provide you with the theme song.

Above the A. & P. store you would catch the speaker-thrown toothpaste ad, and the middle of the block would bring you those two voices, the rich, mellow rumble of Andy and the high, nasal twang of Amos.

Down the street the thirteen minute plot would unfold itself to you as you walked along under the tall

trees. Brother Crawford with his close clipped words telling about that wife of his. Lightnin' with his quavering tale of woe and the touchy, testy voice of the short order man.

The fire house at the end of the street would give you the closing "Until tomorrow night" as the last lingering note of the Perfect Song ended the quarter hour.

Some critics claim that the colored folk are deserting this aerial strip for other attractions. One of my very recent experiences disproves their theory. While having my shoes shined in the new electrical boot buffeting place on Broadway, it grew near seven o'clock. The over-toned radio that serves as a (silent?) salesman was blaring some local station's hot cha-cha, and the boys were slapping on the blacking a la syncopation. All at once they seemed to sense what time it was and they all yelled "Put on the boys!" No—I don't think Amos and Andy are washed up. I think they still have a long way to go.

### The Charming Mrs. Pennyfeather

Adelina Thomason, is better known to radio listeners as the charming "Mrs. Pennyfeather" of NBC's "Cuckoo" program, over the WJZ-NBC network at 10:15 p. m. each Saturday night. She is a native of Worcester, Mass., and the daughter of Andrew O'Connor, famous New England sculptor.

Mrs. Thomason received her schooling at the Sargent Dramatic School, New York, and also attended the American Academy of Dramatic Art. Much of her life has been spent in Paris, London and Berlin and for a time she was European correspondent for the "Musical Courier." She returned from abroad four years ago and soon found herself playing dramatic bits in National Broadcasting Company programs.

In private life she is the wife of Col. Henry D. Thomason, U.S.A., retired, who figured prominently in



Adelina Thomason the wiping out of yellow fever in Cuba during the Spanish-American War. Colonel Thomason is now ship's surgeon on the Furness-Bermuda lines and every few months "Mrs. Pennyfeather" manages to step away from the microphone for a short cruise to the West Indies.

### Ripley Broadcasting—

(Ed. Note—Radio's Marco Polo gives the inside story on some of his Believe-It-Or-Nots. Ripley is heard on the Esso program, over the WJZ-NBC network, on Wednesdays and Fridays at 7:45 p. m.)

The old dago who discovered America would turn over in his grave if he knew that prohibition had been adopted by his native land and that his countrymen were the first to father prohibition.

As I mention this, I can readily sense an avalanche of mixed retorts, indignant replies and exclamatory condemnations, from radio fans.

Admirers of Columbus will undoubtedly condemn me for blaspheming the name of their hero, for calling him "dago." Many there are who will brand me insane for stating that Italy, the land of spirituous wines, patronized the prohibition law. Some will wonder how I could ever mingle the two words "dago" and "prohibition." Still others will pass it off as a sign of oncoming old age. But wait: there's always an answer to everything.

First of all, I never mentioned Columbus, nor did I hurt his good name in any way. Secondly, I am not talking of Italy or Italians when I mention "land of the dagoes."

Columbus was not a dago, he was a Spaniard, and, believe it or not, he never discovered America. However, a dago did discover America, and I do not mean an Italian.

The only dagoes in the world are Swedes. They come from the island of Dago, just off the coast of Sweden, and these Swedes are very proud to be called "Dagoes." It was one of their ancestors, Lief Ericson, who discovered America—500 years before Columbus was born.

This old dago, Lief Ericson, landed on what is now the Coast of Maine and, believe it or not, he called this new country "Wine-land," because of the great quantity of wild grapes he found growing there. But imagine what old Eric would say if he knew that Sweden turned dry (this has since been repealed and the country is wet again), and that the state of Maine where he landed was the first state to turn dry. And what would he say if he knew that a descendant of his by the name of Volstead, changed the name to Dryland?

### New Radio Sketch



### "FRIENDSHIP TOWN"

makes its premiere

FRIDAY, 9:00 P. M., E.S.T.  
NBC Coast to Coast Network

# Vaseline

REG. U. S. PAT. OFF.  
PREPARATIONS

## ALEXANDER GRAY—Continued from Page 1

"rolling" that fits nicely with his job for Chesterfield, which begins on Monday, January 4th at 10:30 p. m., every night except Sunday. At one time in his career he actually picked tobacco from the field.

If ever a man deserved the sobriquet of "Jack of All Trades," it's Alec. But you couldn't rightly say that he's a master of none. Because Mr. Gray has mastered the art of song—or is it a science? And more than that, he has mastered the art of insinuating the sweetness, beauty and strength of his voice into a microphone, which, as any expert on dynamics will tell you, is not as easy as it sounds. The mike is funny that way. It is jealous of its ranges and its volumes, and though you may be an opera star, with a full-chested supply of volume and strength, the mike, if not humored, can do terrific things against you.

Let's take a biographical peep at Alexander Gray, just to see to what degree he has upset the legend about the rolling stone. We hear of him first in Baltimore. It was there where he then lived, that he attended primary and grammar school, but it's a hot town, climatically, and in the summer time, Alec would, to use a polite word, "scram" to Pennsylvania. Happily, in that state, Alexander owned two uncles who possessed estates in Lancaster county. One of these avuncular relatives rejoiced in a dairy farm and the other was equally happy with a herd of cattle. Between the two, young Gray learned much about milking cows (his chores included milking 18 of them in a day) and much more about farming, including (believe it or not) the cultivation of tobacco on one of the agrarian tracts.

Alexander's parents eventually moved from Baltimore to Philadelphia and the young fellow went to Central High School, and suddenly developed a yearning for mechanics, and at every opportunity, he would play and work around the shops of the Philadelphia Electric Supply Company. From there, his ambitions sent him into Penn State College where an engineering course intrigued him, and while he was studying, he was paying his way by selling aluminum cooking utensils during his leisure, if any.

Quite naturally, he drifted into a glee club with his classmates, then into a quartet and also into a dramatic club. It was then that he began to feel the first pangs of a budding art, and they took the form of a desire to sing in public as well as in the bathtub. When Alexander finally became an engineer he decided that this sort of work wouldn't be of much help in cultivating his voice, so to earn enough money to pay for vocal lessons, he became a teacher of carpentry and wood-turning in a private school for boys and for a brief spell, functioned as technical editor of "Iron Age," which, as you are likely to suspect, is a trade publication.

From that he drifted to the teaching of grade subjects at Northwestern Military and Naval Academy, all of which, interestingly enough, came under the head of engineering. His first overture toward a public career came when the National Federation of Musical Clubs decided there weren't enough good singers, trained vocalists, that is, to go around, and so held a national contest, from which Gray emerged as the winner in the Middle States division. The clubs' convention took him to Los Angeles where he made his debut. Lots of engagements in concert and recitals followed, but, if you believe Alec—the offers consisted mainly of small change. Expenses were increasing, so Alec decided it would be a great idea to work instead of singing for a living. It was then that he went into the automobile business. To be specific, he oozed his way in as manager of advertising and sales promotion for the Diamond-T Truck firm of Chicago. But just to keep his vocal chords active, he sang regularly in church choirs.

The dull routine of business, coupled with his irrepressible desire to sing worked young Alec up to such a pitch that one day, throwing all caution and every single inhibition to the winds, he pulled up his stakes and headed for New York—and the Ziegfeld office.

The brand of determination that Gray exhibited on this occasion is the sort that makes you admire the man. He camped on the threshold of Florenz Ziegfeld's office for several weeks. He waylaid the producer a dozen times. He even tried to annoy him. And he succeeded. But he camped and camped, and one day Mr. Ziegfeld, either touched by the young man's perseverance, or tired of being ambushed, dragged Alexander into his office, where Gene Buck was waiting. And together, they listened while Alex warbled with the feeble assistance of a stock pianist.

It just happened that at this time, Ziegfeld was rehearsing his "Frolics" for the Amsterdam Roof. Gray's voice sold him, and he was engaged. Eventually, the production toured, and when it left town, Gray was leading man. He was on the road for an entire year. Gray had been back in New York only a few days when they shipped him out with the "Follies." Again he was a success, and his next tour was as a principal in "Sally." Everybody remembers Marilyn Miller was his co-star in that production. Then came a lot of work. Mr. Gray found himself at odd times playing in "Naughty Riquette" with Mitzi; George Gershwin's "Tell Me More," "Twinkle, Twinkle" and "Sweet Lady."

Next week, we will tell you more about the amazing rise of Mr. Gray; how he crashed the pictures; more of his adventures, what he thinks of radio and the movies, and the strange story about how weak eyes can withstand the movie lights while strong eyes may easily be blinded.

### Something To Boast Of

Bob Childe of the Fireside Singers and Male Quartet holds the ping pong championship of Detroit, Mich.

### Bear For Punishment

James Wallington, NBC announcer, doesn't get enough radio in working hours, so he has had a receiving set put into his sedan.

### Ray Perkins

Ray Perkins, NBC jester, and his favorite pet, "The Old Topper," part goose and part gander. According to Ray "The Old Topper" speaks Choctaw and was trained by Kin-Tak-It vice president of an ancient Indian Tribe.



## Guest Star On Fleischmann Hour



MAE QUESTEL

Mae Questel, who won stardom by winning a local "Helen Kane" contest, "boop-boop-a-dooped" on the Fleischmann Hour on Thursday, December 31, at 8:00 P. M. over the WSAI-NBC network.

### Black Was Choir Boy

Frank Black, director and composer, began as a solo boy soprano when seven years old in St. Clements Church, Philadelphia, which boasts a famous choir. Later a baritone. Earned cash singing at funerals and weddings.

### Dennis King

Dennis King, stage and screen star, was heard as guest artist on the Pond's Dance program on Friday, December 25, at 9:30 P. M. The program was broadcast over the WSAI-NBC network.



## Famous Artist On Boscul Moments

Frank La Forge plays the piano accompaniments for Mme. Alda on the Boscul Moments program, WLW-NBC, Fridays at 7:15 P. M. He accompanies most of the famous opera stars that appear over the radio and in concert, has in fact discovered and taught many of them including Lawrence Tibbett. La Forge never needs a page turner when accompanying a singer. Has over 5000 songs committed to memory. He presents young opera, radio and concert stars in the making, every Thursday over WABC CBS at 3 P. M. in the La Forge-Berumen Musicale.



FRANK  
LA FORGE

## "Real Folks" Get New Sponsor

Matt Thompkins and his friends and neighbors who appear in "Real Folks," George Frame Brown's popular rural sketch, will be heard in a new series of programs to be broadcast every Sunday at 5:00 p. m., over the WKRC-CBS network, beginning January 10.

The general character of the sketch will remain the same, according to present plans, with most of the old familiar personages appearing in the new presentation. The program will be under the sponsorship of General Foods Corporation in the interests of Log Cabin Syrup.

Approximately 20 stations will carry the program at the beginning, covering the Middle Atlantic States, the Central Eastern States, the Middle West, Oklahoma and Texas.

The great popular interest in the affairs of the citizens of Thompkins Corners has been attested by nearly a million letters received from radio listeners since the inception of the sketch in August, 1928.

## Maltine Story Midgets



The midgets featured on the Maltine Story Hour are a regularity to converse with a young woman admirer. This program is heard over the WLW-NBC network every Tuesday afternoon at 5:00 P. M.

# Complete Log of American Stations

Listed in Alphabetical Order for the Convenience of D-X Fans

Call Letters	Location	Kilo-cycles	Call Letters	Location	Kilo-cycles	Call Letters	Location	Kilo-cycles	Call Letters	Location	Kilo-cycles	Call Letters	Location	Kilo-cycles
KABC	San Antonio, Tex.	1420	KID	Idaho Falls, Idaho	1320	WBAL	Baltimore, Md.	760-1060	WGR	Buffalo, N. Y.	550	WMAA	New York, N. Y.	570
KBPS	Portland, Ore.	1420	KIDO	Boise, Idaho	1250	WBAP	Fort Worth, Tex.	800	WGST	Atlanta, Ga.	890	WMIL	Brooklyn, N. Y.	1500
KBTM	Paragould, Ark.	1200	KIT	Yakima, Wash.	1310	WBAX	Wilkes-Barre, Pa.	1210	WGY	Schenectady, N. Y.	790	WMPN	Fairmont, W. Va.	890
KCRC	Enid, Okla.	1370	KJBS	San Francisco, Cal.	1070	WBBC	Brooklyn, N. Y.	1400	WHA	Madison, Wis.	940	WMPG	Lapeer, Mich.	1500
KCRJ	Jerome, Ariz.	1310	KJR	Seattle, Wash.	970	WBBL	Richmond, Va.	1210	WHAD	Milwaukee, Wis.	1120	WMRJ	Jamaica, N. Y.	1210
KCSD	San Diego, Cal.	600	KLCN	Blytheville, Ark.	1290	WBBM	Chicago, Ill.	770	WHAM	Rochester, N. Y.	1150	WMSG	New York, N. Y.	1350
KDB	Santa Barbara, Cal.	1500	KYCN	Blytheville, Ark.	1290	WBBR	Brooklyn, N. Y.	1300	WHAS	Louisville, Ky.	820	WMT	Waterloo, Iowa	600
KDFN	Casper, Wyo.	1210	KLO	Ogden, Utah	1400	WBBZ	Ponca City, Okla.	1200	WHAT	Philadelphia, Pa.	1310	WNAC	Boston, Mass.	1230
KDKA	Pittsburgh, Pa.	980	KLPM	Minot, N. Dak.	1240	WBCM	Bay City, Mich.	1410	WHAZ	Troy, N. Y.	1300	WNAD	Norman, Okla.	1010
KDLR	Devils Lake, N. D.	1210	KLRA	Little Rock, Ark.	1390	WBEN	Buffalo, N. Y.	900	WHB	Kansas City, Mo.	860	WNAX	Yankton, S. Dak.	570
KDYL	Salt Lake City, Utah	1290	KLS	Oakland, Cal.	1440	WBEO	Marquette, Mich.	1310	WHBC	Canton, Ohio	1200	WNBH	Binghamton, N. Y.	1500
KECA	Los Angeles, Cal.	1430	KLX	Oakland, Cal.	850	WBGF	Glen Falls, N. Y.	1370	WHBD	Mt. Orab, Ohio	1370	WNBK	New Bedford, Mass.	1310
KELW	Burbank, Cal.	780	KLZ	Denver, Colo.	560	WBHS	Huntsville, Ala.	1200	WHBF	Rock Island, Ill.	1210	WNBO	Washington, Pa.	1200
KEX	Portland, Ore.	1180	KMA	Shenandoah, Iowa	930	WBIG	Greensboro, N. C.	1440	WHBL	Sheboygan, Wis.	1410	WNBW	Memphis, Tenn.	1430
KFAB	Lincoln, Nebr.	770	KMAC	San Antonio, Tex.	1370	WBIS	Boston, Mass.	1230	WHBQ	Memphis, Tenn.	1370	WNBX	Springfield, Vt.	1200
KFAC	Los Angeles, Cal.	1300	KMBC	Kansas City, Mo.	950	WBMS	Hackensack, N. J.	1450	WHBY	Green Bay, Wis.	1200	WNBZ	Saranac Lake, N. Y.	1290
KFBB	Great Falls, Mont.	1280	KMCS	Inglewood, Cal.	1120	WBNA	New York, N. Y.	1350	WHDF	Calumet, Mich.	1370	WNJ	Newark, N. J.	1450
KFBI	Millford, Kans.	1050	KMED	Medford, Ore.	1310	WBNO	New York, N. Y.	860	WHDH	Boston, Mass.	830	WNOX	Knoxville, Tenn.	560
KFBK	Sacramento, Cal.	1310	KMJ	Fresno, Cal.	1210	WBOW	Terre Haute, Ind.	1310	WHDI	Minneapolis, Minn.	1180	WNAX	New York, N. Y.	570
KFBL	Everett, Wash.	1370	KMLB	Monroe, La.	1200	WBRE	Birmingham, Ala.	930	WHDL	Tupper Lake, N. Y.	1420	WOAI	San Antonio, Tex.	1190
KFDM	Beaumont, Tex.	560	KMMJ	Clay Center, Nebr.	740	WBRE	Wilkes-Barre, Pa.	1310	WHEC	Rochester, N. Y.	1440	WOAX	Trenton, N. J.	1280
KFDY	Brookings, S. D.	550	KMO	Tacoma, Wash.	860	WBSO	Needham, Mass.	920	WHEC	Cicero, Ill.	1420	WOBU	Charleston, W. Va.	580
KFEL	Denver, Colo.	920	KMOX	St. Louis, Mo.	1090	WBT	Charlotte, N. C.	1080	WHK	Bluefield, W. Va.	1410	WOC	Davenport, Iowa	1000
KFEQ	St. Joseph, Mo.	680	KMPC	Los Angeles, Cal.	710	WBTM	Danville, Va.	1370	WHK	Cleveland, Ohio	1390	WOD	Washington, N. J.	1250
KFGQ	Boone, Iowa	1310	KMTR	Los Angeles, Cal.	570	WBZA	Springfield, Mass.	990	WHK	New York, N. Y.	1010	WODX	Mobile, Ala.	1410
KFH	Wichita, Kans.	1300	KNX	Los Angeles, Cal.	1050	WBZ	Springfield, Conn.	600	WHN	New York, N. Y.	1010	WOI	Ames, Iowa	640
KFI	Los Angeles, Cal.	640	KOA	Denver, Colo.	830	WCAC	Storrs, Conn.	1220	WHO	Des Moines, Iowa	1000	WOKO	Albany, N. Y.	1440
KFIO	Spokane, Wash.	1120	KOAC	Corvallis, Ore.	550	WCAD	Canton, N. Y.	1220	WHOM	Jersey City, N. J.	1450	WOL	Washington, D. C.	1310
KFIZ	Pond du Lac, Wis.	1420	KOB	State College, N. M.	1180	WCAE	Pittsburgh, Pa.	1220	WIBA	Madison, Wis.	1280	WOMT	Manitowoc, Wis.	1210
KFJB	Marshalltown, Iowa	1200	KOCW	Chickasha, Okla.	1400	WCAH	Columbus, Ohio	1430	WIBG	Elkins Park, Pa.	930	WOOD	Grand Rapids, Mich.	1270
KFJF	Oklahoma City, Okla.	1480	KOH	Reno, Nevada	1380	WCAJ	Lincoln, Nebr.	590	WIBO	Jackson, Mich.	1370	WOPI	Bristol, Tenn.	1500
KFJI	Astoria, Ore.	1370	KOIL	Council Bluffs, Iowa	1260	WCAL	Northfield, Minn.	1250	WIBO	Chicago, Ill.	560	WOQ	Kansas City, Mo.	1300
KFJM	Grand Forks, N. D.	1370	KOIN	Portland, Ore.	940	WCAM	Camden, N. J.	1280	WIBR	Steubenville, Ohio	1420	WOR	Newark, N. J.	710
KFJR	Portland, Ore.	1300	KOL	Seattle, Wash.	1270	WCAN	Baltimore, Md.	600	WIBU	Poynette, Wis.	1210	WORC	Worcester, Mass.	1200
KFJY	Fort Dodge, Iowa	1310	KOMO	Seattle, Wash.	920	WCAP	Asbury Park, N. J.	1280	WIBW	Topeka, Kans.	580	WOS	Jefferson City, Mo.	630
KEJZ	Fort Worth, Tex.	1370	KONO	San Antonio, Tex.	1370	WCAT	Rapid City, S. D.	1200	WIBX	Utica, N. Y.	1200	WOV	New York, N. Y.	1130
KFKA	Greeley, Colo.	880	KOOS	Marshfield, Ore.	1420	WCAT	Philadelphia, Pa.	1170	WIC	Bridgeport, Conn.	600	WOW	Omaha, Nebr.	590
KFKU	Lawrence, Kans.	1220	KORE	Eugene, Ore.	1470	WCAX	Burlington, Vt.	1200	WIL	St. Louis, Mo.	1200	WOWO	Fort Wayne, Ind.	1160
KFKX	Chicago, Ill.	1020	KOY	Phoenix, Ariz.	1390	WCAY	Chicago, Ill.	1070	WIL	Urbana, Ill.	890	WPAD	Paducah, Ky.	1420
KFLV	Rockford, Ill.	1410	KPCB	Seattle, Wash.	650	WCBA	Allentown, Pa.	1440	WILM	Wilmington, Del.	1420	WPAP	New York, N. Y.	1010
KFLX	Galveston, Tex.	1370	KPJM	Prescott, Ariz.	1500	WCBD	Zion City, Ill.	1080	WIOD	Miami, Fla.	1300	WPAP	Pawtucket, R. I.	1210
KFMX	Northfield, Minn.	1250	KPO	San Francisco, Cal.	680	WCBM	Baltimore, Md.	1370	WIP	Philadelphia, Pa.	610	WPC	Chicago, Ill.	560
KFN	Shenandoah, Iowa	890	KPOF	Denver, Colo.	880	WCBN	Springfield, Ill.	1210	WIS	Columbia, S. C.	1010	WPCH	New York, N. Y.	810
KFOR	Lincoln, Nebr.	1210	KPPC	Pasadena, Cal.	1210	WCCO	Minneapolis, Minn.	810	WISN	Milwaukee, Wis.	1120	WPEN	Philadelphia, Pa.	1500
KFOX	Long Beach, Cal.	1250	KPQ	Wenatchee, Wash.	1500	WCDA	New York, N. Y.	1350	WJAC	Johnstown, Pa.	1310	WPG	Atlantic City, N. J.	1100
KFPL	Dublin, Tex.	1310	KPRC	Houston, Tex.	920	WCDF	Chicago, Ill.	970	WJAG	Norfolk, Nebr.	1060	WPOE	Patchogue, N. Y.	1370
KFPM	Greenville, Tex.	1310	KQV	Pittsburgh, Pa.	1380	WCGU	Brooklyn, N. Y.	1400	WJAK	Marion, Ind.	1310	WPRO	Providence, R. I.	1210
KFPW	Fort Smith, Ark.	1340	KQW	San Jose, Cal.	1010	WCHI	Chicago, Ill.	1490	WJAR	Providence, R. I.	890	WPTC	State College, Pa.	1230
KFPY	Spokane, Wash.	1340	KRE	Berkeley, Cal.	1370	WCKY	Covington, Ky.	1490	WJAX	Jacksonville, Fla.	900	WPTF	Raleigh, N. C.	680
KFQD	Anchorage, Alaska	1230	KREG	Santa Ana, Cal.	1500	WCL	Janesville, Wis.	1200	WJAY	Cleveland, Ohio	610	WQAM	Miami, Fla.	560
KFQU	Holy City, Cal.	1420	KRGV	Harlingen, Tex.	1260	WCLS	Joliet, Ill.	1310	WJAZ	Chicago, Ill.	1490	WQAN	Scranton, Pa.	880
KFR	San Francisco, Cal.	610	KRLD	Dallas, Tex.	1040	WCOA	Culver, Ind.	1400	WJBC	La Salle, Ill.	1200	WQAO	New York, N. Y.	1010
KFRU	Columbia, Mo.	630	KRMD	Shreveport, La.	1310	WCOB	Pensacola, Fla.	1340	WJBI	Red Bank, N. J.	1210	WQBC	Vicksburg, Miss.	1360
KFSG	Los Angeles, Cal.	1120	KROW	Oakland, Cal.	930	WCOE	Meridian, Miss.	880	WJBK	Detroit, Mich.	1370	WQDM	St. Albans, Vt.	1370
KFUL	Galveston, Tex.	1290	KRSC	Seattle, Wash.	1120	WCOF	Harrisburg, Pa.	1200	WJBL	Decatur, Ill.	1200	WQDX	Thomasville, Ga.	1210
KFUO	St. Louis, Mo.	550	KSAC	Manhattan, Kans.	580	WCOH	Yonkers, N. Y.	1210	WJBO	New Orleans, La.	1420	WQF	Williamsport, Pa.	1370
KFUP	Denver, Colo.	1310	KSCJ	Sioux City, Iowa	1330	WCRW	Chicago, Ill.	1210	WJBT	Chicago, Ill.	770	WRAM	Wilmington, N. C.	1370
KFVD	Culver City, Cal.	1000	KSD	St. Louis, Mo.	550	WCSC	Charleston, S. C.	1360	WJBU	Lewisburg, Pa.	1210	WRAX	Reading, Pa.	1310
KFVS	Cape Girardeau, Mo.	1210	KSEI	Pocatello, Idaho	900	WCSH	Portland, Maine	940	WJBW	New Orleans, La.	1200	WRAX	Philadelphia, Pa.	1020
KFWB	Hollywood, Fla.	950	KSL	Salt Lake City, Utah	1130	WDAE	Tampa, Fla.	1220	WJBY	Gadsden, Ala.	1210	WRB	Hattiesburg, Miss.	1370
KFWF	St. Louis, Mo.	1200	KSMR	Santa Maria, Cal.	1200	WDAF	Kansas City, Mo.	610	WJDX	Jackson, Mich.	1270	WRBL	Columbus, Ga.	1200
KFWI	San Francisco, Cal.	930	KSOO	St. Charles, Mo.	1380	WDAH	Amarillo, Tex.	1410	WJDD	Mooseheart, Ill.	1130	WRBQ	Greenville, Miss.	1210
KFXD	Nampa, Idaho	1420	KSTP	St. Paul, Minn.	1460	WDAY	El Paso, Tex.	1310	WJDS	Gary, Ind.	1360	WRB	Roanoke, Va.	1410
KFXE	Denver, Colo.	920	KTAB	San Francisco, Cal.	560	WDAY	Fargo, N. Dak.	940	WJMS	Ironwood, Mich.	1420	WRD	Washington, D. C.	950
KFXJ	Grand Junction, Colo.	1310	KTAR	Phoenix, Ariz.	620	WDBJ	Roanoke, Va.	930	WJR	Detroit, Mich.	750	WRD	Augusta, Maine	1370
KFXM	San Bernardino, Cal.	1210	KTAT	Fort Worth, Tex.	1240	WDBO	Orlando, Fla.	1120	WJTV	Alexandria, Va.	1460	WRD	Augusta, Ga.	1500
KFXR	Oklahoma City, Okla.	1310	KTB	Portland, Ore.	1300	WDEL	Wilmington, Del.	1120	WJTL	Tifton, Ga.	1370	WRE	Memphis, Tenn.	600
KFXZ	Flagstaff, Ariz.	1420	KTB	Shreveport, La.	1450	WDEV	Waterbury, Vt.	1420	WJW	Mansfield, Ohio	1210	WREN	Lawrence, Kans.	1220
KFY	Bismarck, N. D.	550	KTFI	Twin Falls, Idaho	1320	WDGY	Minneapolis, Minn.	1180	WJZ	New York, N. Y.	760	WRHM	Minneapolis, Minn.	1250
KGA	Spokane, Wash.	1470	KTHS	Hot Springs, Ark.	1040	WDH	Tupelo, Miss.	1500	WKA	East Lansing, Mich.	1040	WRJN	Racine, Wis.	1370
KGAR	Tucson, Ariz.	1370	KTLC	Houston, Tex.	1310	WDOO	Chattanooga, Tenn.	1280	WKAY	Laconia, N. H.	1310	WRNY	New York, N. Y.	1010
KGB	San Diego, Cal.	1330	KTM	Los Angeles, Cal.	780	WDR	Hartford, Conn.	1330	WKBB	Joliet, Ill.	1310	WROL	Knoxville, Tenn.	1310
KGBU	Ketchikan, Alaska	900	KTRH	Houston, Tex.	1120	WDSU	New Orleans, La.	1250	WKBC	Birmingham, Ala.	1310	WRR	Dallas, Tex.	1280
KGBX	St. Joseph, Mo.	1310	KTSA	San Antonio, Tex.	1290	WDWF	Providence, R. I.	1210	WKBF	Indianapolis, Ind.	1400	WRUF	Gainesville, Fla.	830
KGBZ	York, Nebr.	930	KTSL	Shreveport, La.	1310	WDZ	Tuscola, Ill.	1070	WKBI	La Crosse, Wis.	1380	WRVA	Richmond, Va.	1110
KGCA	Decorah, Iowa	1270	KTSM	El Paso, Tex.	1310	WEAF	New York, N. Y.	660	WKBJ	Cicero, Ill.	1420	WSAI	Cincinnati, Ohio	1330
KGCR	Watertown, S. D.	1210	KTW	Seattle, Wash.	1220	WEAL	Ithaca, N. Y.	1270	WKBN	Youngstown, Ohio	570	WSAJ	Grove City, Pa.	1310
KGCU	Mandan, N. D.	1240	KUJ	Walla Walla, Wash.	1370	WEAN	Providence, R. I.	780	WKBO	Jersey City, N. J.	1450	WSAR	Fall River, Mass.	1455
KGCX	Wolf Point, Mont.	1310	KUOA	Fayetteville, Ark.	1390	WEAO	Columbus, Ohio	570	WKBY	Galesburg, Ill.	1310	WSAZ	Huntington, W. Va.	580
KGDA	Mitchell, S. D.	1370	KUSD	Vermillion, S. Dak.	890	WEBC	Superior, Wis.	1290	WKBW	Connersville, Ind.	1500	WSB	Atlanta, Ga.	740
KGDE	Fergus Falls, Minn.	1200	KUT	Austin, Tex.	1500	WEBQ	Harrisburg, Ill.	1210	WKBY	Buffalo, N. Y.	1480	WSBC	Chicago, Ill.	1210
KGDM	Stockton, Cal.	1100	KVI	Tacoma, Wash.	760	WEBR	Buffalo, N. Y.	1310	WKBY	Ludington, Mich.	1500	WSBT	South Bend, Ind.	1230
KGDY	Huron, S. D.	1200	KVL	Seattle, Wash.	1370	WEDC	Chicago, Ill.	1210	WKBY	Lancaster, Pa.	1200	WSFN	Columbus, Ohio	1210
KGEF	Los Angeles, Cal.	1300	KVOA	Tucson, Ariz.	1260	WEDH	Erie, Pa.	1420	WKBY	Indianapolis, Ind.	1400	WSFA	Montgomery, Ala.	1410
KGEK	Yuma, Colo.	1200	KVOO	Tulsa, Okla.	1140	WEEI	Boston, Mass.	590	WKBY	Buffalo, N. Y.	1480	WSIX	Springfield, Tenn.	1210
KGER	Long Beach, Cal.	1360	KVOR	Colorado Springs, Colo.	1270	WEEO	Reading, Pa.	830	WKBY	Buffalo, N. Y.	1480	WSJS	Winston-Salem, N. C.	1310
KGEW	Fort Morgan, Colo.	1200	KVOS	Bellingham, Wash.	1200	WEHC	Emory, Va.	1350	WKBY	Buffalo, N. Y.	1480	WSM	Nashville, Tenn.	650
KGEZ	Kalispell, Mont.	1310	KVOS	Bellingham, Wash.	1200	WEHS	Cicero, Ill.	1420	WKBY	Buffalo, N. Y.	1480	WSMB	New Orleans, La.	1320
KGFF	Shawnee, Okla.	1420	KWCR	Cedar Rapids, Iowa	1310	WELL	Philadelphia, Pa.	1370	WKBY	Buffalo, N. Y.	1480	WSMK	Dayton, Ohio	1380
KGFG	Oklahoma City, Okla.	1370	KWEA	Shreveport, La.	1210	WELL	Battle Creek, Mich.	1420	WKBY	Buffalo, N. Y.	1480	WSOC	Gastonia, N. C.	1210
KGFI	Corpus Christi, Tex.	1500	KWG	Stockton, Cal.	1200	WENR	Chicago, Ill.	870	WKBY	Buffalo, N. Y.	1480	WSPA	Spartanburg, S. C.	1420
KGFI	Los Angeles, Cal.	1200	KWJJ	Portland, Ore.	1060	WEPS	Worcester, Mass.	1200	WKBY	Buffalo, N. Y.	1480	WSPD	Toledo, Ohio	1340
KGFK	Moorhead, Minn.	150												