

RADIO DOINGS

ALL WAVE **5¢** MAGAZINE



M
A
R
Y

K
I
R
K

K
N
X

S
O
N
G
S
T
R
E
S
S

BAGLEY RADIO STORE

397 Highland Ave

San Bernardino, Calif. Phone 274

JUNE 16-JULY 1
1935

Home Products Co.

THROUGH THEIR THREE STORES

Now offers the most Liberal Terms in the
History of Credit Finance— **NOW!**
For Those Who Act

NO DOWN PAYMENTS

Because of our firmly established financial connections—you may now purchase home equipment from us on these "here-to-fore" unheard of terms. First of all—NO DOWN PAYMENT!

FROM THREE TO FIVE YEARS TO PAY

Enjoy today the benefits of this new way of budgeting.

AS LITTLE AS \$3.18 PER MONTH

A genuine Frigidaire (there is only one—a product of General Motors) may be purchased for as little as \$3.18 per month. This is less than your ice bill and food saving.

LOWEST INTEREST CHARGES

There is no desire to profit by tremendous interest charges on these transactions. You'll be amazed at the extremely low rate of interest provided under this plan.

ADDITIONAL CASH—\$100 to \$2000 DIRECT TO YOU FOR HOME MODERNIZATION

NO LIENS ON PROPERTY

There is no lien or mortgages placed against your home.

NO RED TAPE . . . NO DELAYS

All details covering delivery, installation or financing will be handled by one of our representatives either in your home or at our store.

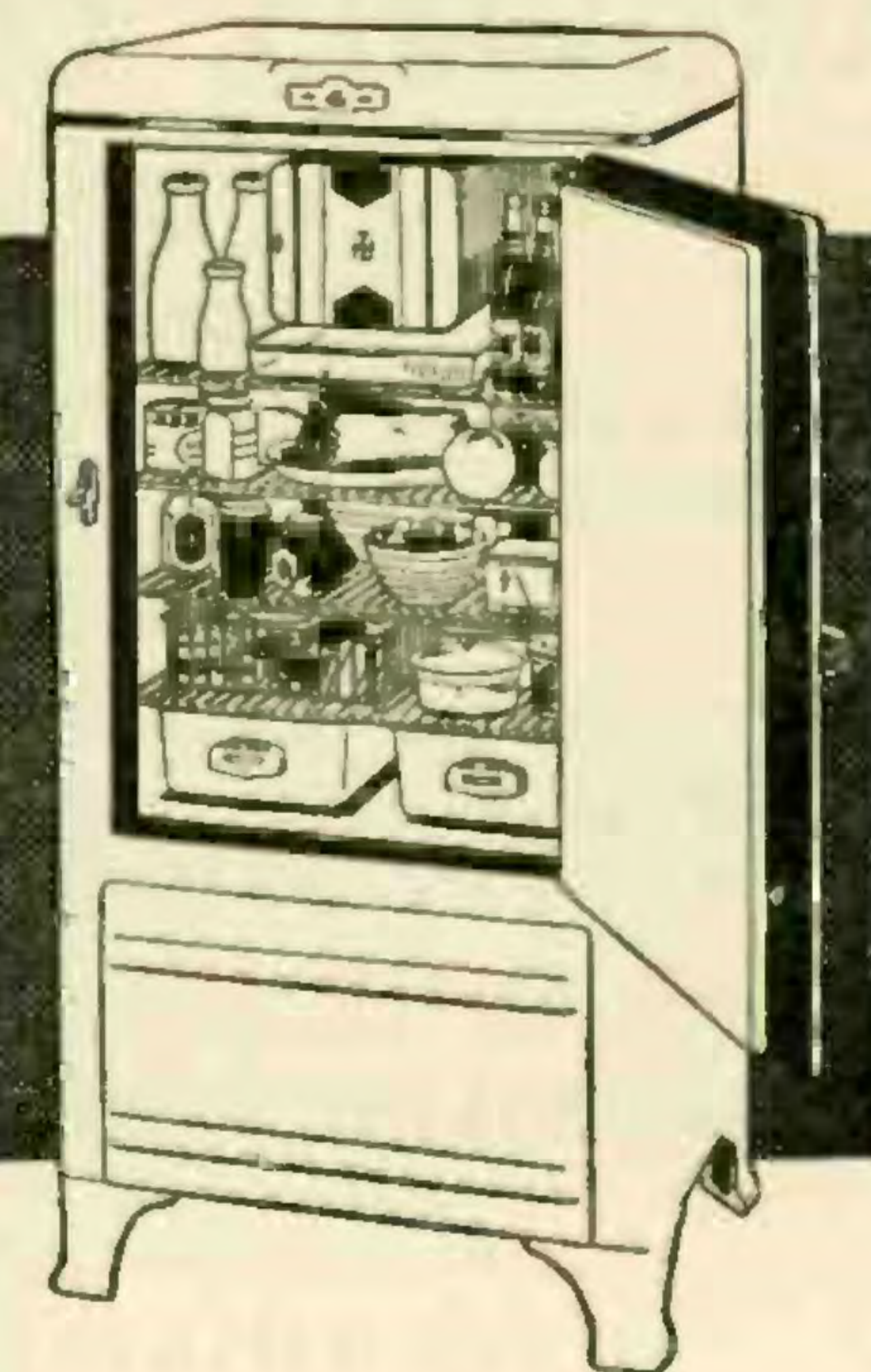
H O M E P R O D U C T S C O .

201 East Broadway
GLENDALE, CALIFORNIA
Douglas 0892

1106 Fair Oaks
SOUTH PASADENA, CALIF.
Hudson 5424

130 East San Fernando Road
BURBANK, CALIF.
Burbank 2160

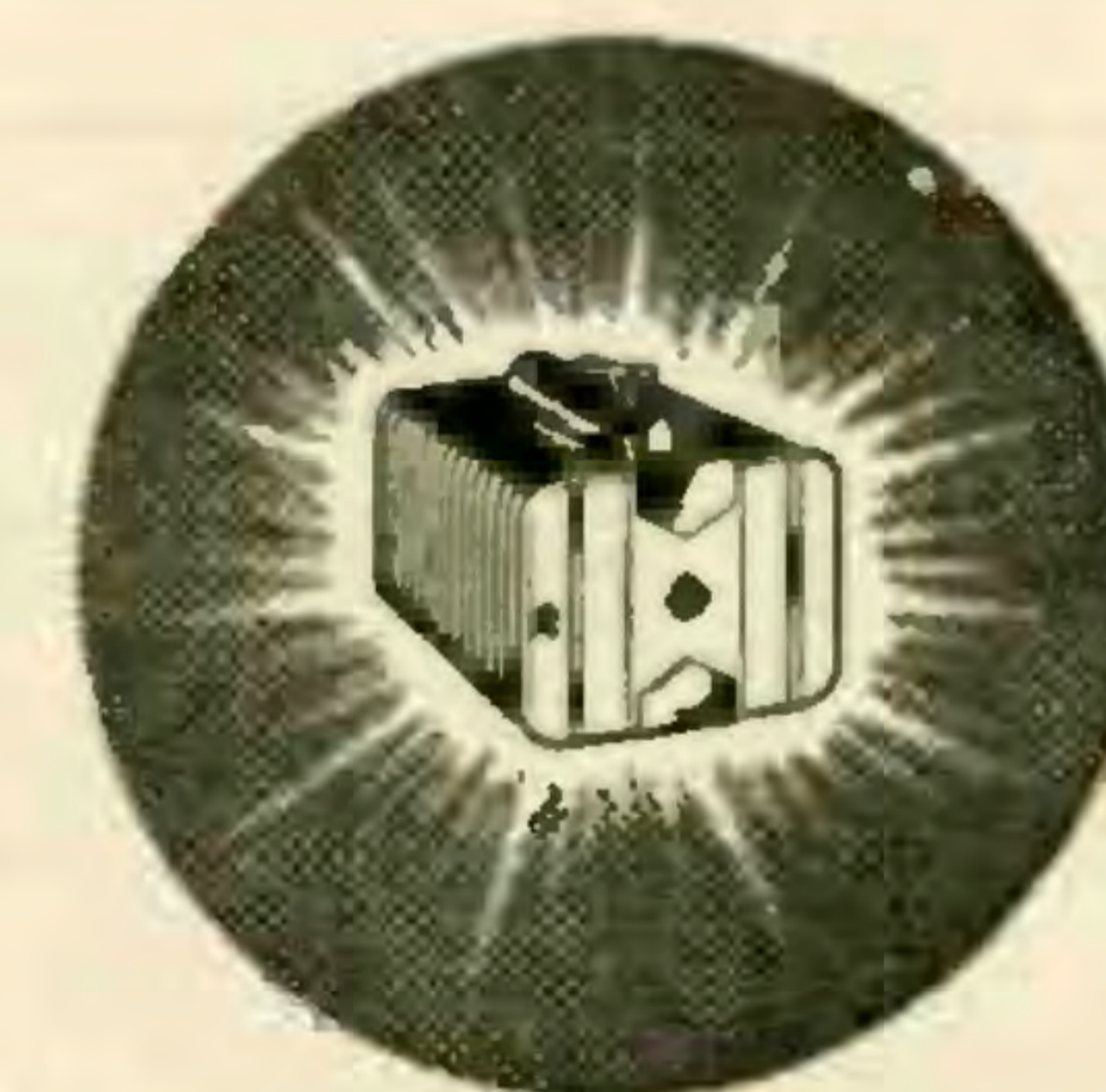
THE
Frigidaire
'35
is here!



EVERY MODEL WITH THE
SUPER FREEZER

Why 4 Million Have Been Purchased

- *From 1 ½ to 3c per day operating costs.
- *Made by General Motors Corp. for 23 years.
- *Fast freezing, more ice, better desserts.
- *Frozen storage for meats, ice cream, etc.
- *Extra cold storage for parties and guests.
- *Moist storage, famous Frigidaire Hydrator.
- *Automatic Reset defrosting (patented).
- *Automatic tray releasing (patented).
- *Life-time porcelain (patented).
- *Quick Freeze control (patented).



17 Models to
Choose From

Priced from
\$87.50 to \$542.00

CARDWELL CONDENSERS

"20 Years of Engineering Skill Behind Every Cardwell Product"

Receiving

**STRAIGHT LINE CAPACITY TYPE
TRIM-AIR FOUR-PURPOSE MIDGETS**

Transmitting

**STRAIGHT LINE CAPACITY TYPE
FIXED PLATE . . . TAPER PLATE
MIDWAY DOUBLE CONDENSERS**

There is a Cardwell Condenser for every need, and remember—
"THERE IS NO SUBSTITUTE FOR QUALITY"

DIRECT FACTORY REPRESENTATIVE

CONSOLIDATED SALES CO.

243 WEST ADAMS

PRospect 5516

LOS ANGELES

ZACK RADIO SUPPLY CO.

"THE RADIO CORNER"

1000 SOUTH BROADWAY, LOS ANGELES

Carries All Models and Complete Stock of
UNIVERSAL MICROPHONE CO.'s PRODUCTS



"E"

MICROPHONES

Including single and double button; lapel; model E and G condenser; aero - type and handi, as well as floor and desk mount stands.

RECORDING EQUIPMENT

Including professional disc recorders; Silveroid and aluminum records; sapphire recording styli; pickups and lead screws.

And all other Universal items, including power supplies, transformers, microphone inputs, hearing aid devices; microphone tone controls; remote control panels, amplifiers, and so forth.

New Catalogues Now Available

Universal Microphone Co., Inc., Inglewood, Calif., U.S.A.

Radio Doings

ALL WAVE MAGAZINE

Trade Mark Reg. U. S. Pat. Off.

1412 West Twelfth Street, Los Angeles, California
Prospect 1662

5c A COPY

\$1.00 A YEAR

The Only All-Wave Magazine Published

RADIO DOINGS ALL WAVE MAGAZINE, JUNE 15-JULY 1, 1935

Issued the first and fifteenth of each month at 1412 West Twelfth St., Los Angeles, Calif.

Volume I, Number 10

TABLE OF CONTENTS

STUDIO NEWS..... 6 By Dorothy Marshall	SHORT WAVE CLUB LETTERS.....12
LISTENING IN..... 8 By Eleanor Alexander	SHORT WAVE SCHEDULES14-15-16-17
CONDENSER HINTS..... 9 By William Dublier	CLASSIFIED PROGRAMS17-29
THE 171-FOOT TOWER AT W6AM10-11 By Don C. Wallace	TRADE NEWS30
	TRADE NOTES31

Get every issue of Radio Doings All Wave Magazine, and keep up with the latest news and schedules of short wave and broadcast stations of the world.

Subscription \$1.00 a Year

33 MODELS—ALL WAVE LENGTHS AND VOLTAGES

AC—DC

AUTO-HOME



AC and DC

AUTO RADIO

Sold by all leading dealers—Ask for TROY

TROY RADIO MFG. CO., 1815 Venice Blvd. EX-1291

Studio News . . . by Dorothy Marshall

Lovely and blonde is Mary Kirk whose face graces this issue's cover . . . Sweet and low is her voice . . . and your scribe well remembers the day, nearly two years ago, when her dulcet tones captivated a hard-boiled audition board at KNX, the Voice of Hollywood. From then on, the radio audience "lent an ear" with considerable ardour. From radio success, it was only a step to pictures and Mary won a well-deserved place in the recording departments. Since then she has divided her time between the major studios and radio. But Mary has a passionate leaning toward KNX. It's home to her and listeners welcome her back from each picture excursion in the manner of a true "prodigal daughter." One of the really delightful programs in western radio is the 8:00 - to - 8:15 spot on Monday nights when Mary Kirk and Lawrence King, tenor, sing to the accompaniment of Wilbur Hatch's excellent music. If you're wearied to tears with raucous blues singers and alleged crooners, we urge you to dial KNX at the above hour. The voices of these two top-notch singers, being of the same timber, we waited with baited breath last Monday night, hoping that they would break into a duet which would be our idea of "really something." We live in hopes.

* * *

Those taking an ether vacation for the remainder of the summer season include Bing Crosby, Fire Chief Ed Wynn, who is replaced by Eddie Duchin's "super-epic" music, and Don Mario of the Penthouse Serenade program.

Now that all possible havoc has been created with program schedules, the restlessness appears to have invaded the personnel department of the various broadcasting stations with the following changes taking place: KNX announces the appointment of Leonard L. C. Cox, former program director of WOR and WABC, and Director of Commercial Productions of WJZ, as Program Director of KNX. Author of some of the most successful radio continuities in the past ten years, the appointment of Cox is considered a great step in the forward march of The Voice of Hollywood. KMTR has signed James Burton, author of the "Dramatizing Dickens" series and creator of the title role of "Nicholas Nickelby," to write bigger and better radio continuities. KHJ thinks well of the appointment of Joseph E. Bren to the Thomas Lee Art-

ists Bureau in that Mr. Bren has been identified for more than a decade with the production and staging of entertainment features of large corporations in the East, South, and Middlewest. All of which seems to argue for new and better things in the way of radio entertainment.

* * *

The most definite trend apparent in the last few week's radio programs is toward more news commentaries. Edwin C. Hill, with his colorful discussions on "The Human Side of the News," is back on the air, after a month's vacation, Monday and Wednesday, at 4:15 p.m. over KHJ. KMTR's News Commentary program, heard nightly at 11:15 to 11:30, is devoted to the details of the leading story of the day. W. R. Gordon, who edits the "Editorial Page of the Air" for KFVB listeners each Wednesday and Friday night at 8:15, acted as supervisor of the Associated Press in Los Angeles for years and is at present in charge of the Press Radio Bureau. Add also Sheldon Lewis, noted for his remarks on leading literary works, governmental problems and political questions to KFVB's roster. This enlightening comment is heard every night except Saturday and Sunday at 7:30. If you're a news hound, you've probably discovered KHJ's very important contribution along this line in their 10:10 nightly feature, Voice of the Globe.

* * *

For years now, we have deplored the complete absence of a really good children's program on the air. We have wondered why, with all the wonderful material available this should be true. Now comes KECA with the answer to the harrassed mother's prayer, and, according to reports, children are equally enthusiastic. The program is called "Once Upon a Time" and the time is 5:45 p.m. every Monday, Wednesday, and Friday. The series will comprise all of the best loved fairy tales of the world, including such stories as "The Little Red Hen," "Hansel and Gretel," and so on. Not since the days of Baron Keyes' charming "Air Castle" have we been so hopeful for the right kind of a children's program.

* * *

There is much rejoicing over KMTR way, due to the signing of Gene Austin, one of the most popular song stylists of the day. Austin's voice brings nostal-

gic memories of college days to many of us and his nightly broadcasts are sure to pull a large vote by the listener. Not only one broadcast but two are scheduled nightly for Austin, the time being 8:15 and 11:00. While we are thinking along KMTR lines, there is the new "KMTR On Parade" program which is an offering of Santaella, musical director. Time is 9:30 on Wednesdays.

* * *

Loretta Young, screen star, will be featured in the radio adaptation of

"The Patsy," the presentation of the Radio Theatre on Sunday, June 16, over KFI and NBC network. Incidentally, on Monday, July 29, the Radio Theatre of the Air has a moving day, and on and after that date will be heard over the Columbia network and KHJ locally. Present time is Sundays, 10:30 a.m.

* * *

Add amateur hours: "Road to Fame," KHJ, Monday night at 8:30, and Eddie Duchin's national "open" tournament, KFI at 5:30 Tuesday.

Racon Horns and Units

SPEAKER — TRUMPETS
FLARED BAFFLE PROJECTORS

See the New Turret Projector



Utah-Carter Radio Products

Dynamic Speakers, Orthovox Speakers,
Utah Replacement Vibrators

CARTER—Volume Controls, Jacks, Switches
and Replacement Transformers



Muter Candohms . . . Resistors

MUTER ALL-WAVE TUNING COUPLER
For Doublet Antenna
INCREASES VOLUME AND SELECTIVITY

California Representative

LOMBARD J. SMITH CO.

425 EAST PICO STREET

PROSPECT 4031

LOS ANGELES

—Also Representing—

HOWARD B. JONES PLUGS and SOCKETS
JANETTE CONVERTERS

Listening In . . . by Eleanor Alexander

Why, I ask, don't we have more concert pianists, and why aren't those few we do have allowed more than a measly fifteen minutes, which is hardly time enough to get warmed up? For my part, I could wish no finer entertainment than the piano, and on the supposition that there are others like me, I've been trying for some time to make a classification of such programs. They change so rapidly it's hard to keep up with them, but this is what I've been able to unearth:

Sunday:

- 10:00 a.m.—Maurice Zam, KECA.
- 10:15 a.m.—Henri Deering, KFI.
- 6:30 p.m.—Fray & Braggiotti, KHJ
- 9:30 p.m.—Victor Aller, KECA.

Tuesday:

- 6:30 p.m.—Fray & Braggiotti, KHJ

Wednesday:

- 2:45 p.m.—Dr. Liebling, KMTR.

And KNX's programs of piano recordings at 2:30 on Tuesdays and Fridays. Whether you will be able to find these as listed depends entirely on the *deus ex machina* of the stations.

Speaking of good music, I hope you haven't been missing the concerts from the San Diego Exposition. (KHJ, Saturday at 3:30, Sunday at 5, Tuesday and Thursday at 8 p.m.)

Another item is female singers of popular songs. So many of them have no voices at all and strain horribly for their effects. It's a relief when someone like Patti Chapin comes along. She has a truly mellow voice, soothing and not forced nor whiny. (KHJ, Monday at 1 p.m.)

In the blues category, there is Loretta Lee over the same station at 12:45 Wednesday.

I suppose you've heard and liked Jeanne Dunne in her Song Silhouettes over KFVB, Monday at 7. The little stories, monologues, song-logues, or whatever you want to call them, make an interesting change.

I wonder if Lee Perrins, who leads the band in Beatrice Lillie's program, gets his name from a Worcestershire sauce label. (Adv.) Anyway, his music is just as tasty.

From music to drama, there is KFI's House of Glass, one of those dramas of every-day humans. Listening

through a fog of conversation from guests who *would* talk, I thought it sounded like fine stuff—good acting and characterization.

Then there is KNX's Shining Adventure, portraying the lives of people who have contributed to the world's advancement, which is educational as well as entertaining.

Something else again are the original plays starring Irene Rich over KFI, Friday at 4. While they are not going to make any dent in the world of Art, they are amusing and well done.

Something else which is skillfully produced and acted is KHJ's Court of Human Relations. (On the same day at 4:30.) The material? Well, a little on the sentimental side, but still interesting.

An interesting and informative program is Art in America (KECA, Friday at 3:30). Although the information is presented in the interview method, which I generally find too artificial for my taste, this is better than most, and, whatever the method, well worth hearing.

Recently I had a letter calling my attention to KMTR's program, From Him to You, Monday, Wednesday, and Friday at 4. Who says Romance is dead? This is a program dedicated to sweethearts everywhere in which "HE" brings a message of love in poetry and violin. The selections of both are good, and, unlike David Ross' program, "Romance," which I think superior in other ways, the titles of the poems are given.

Another program along this line which I happen to like better, not due to any especial merit but because I prefer orchestra and voice to organ and violin, is KHJ's Lilac Time (Monday at 6:30).

I've been foiled so many times in my attempt to tell you when you might hear Delmar Edmundson that I'm getting a little superstitious about it, but KHJ assures me that he is to continue to be emcee of California Melodies at 5:30 Saturdays.

CONDENSER HINTS

By WILLIAM DUBILIER

MANY cases of irregular or unstable operation of short-wave receivers can be traced to improper by-passing of important plate and screen elements in the radio frequency portions of the circuits. The by-pass condensers should be placed as close as possible to the tube socket, with short, direct leads running to the screen and to the B plus end of the interstage transformer primary, and with the "grounded" sides of the condensers connected directly to the cathode rather than to the metal chassis.

For the usual amateur or experimental short-wave receiver that tunes from about 15 to 200 meters, radio-frequency by-pass condensers should have a capacitance between .005 and .1 mf. The actual value is not critical, the .01 mf. size being the most generally used. However, it is essential that the condensers be of the non-inductive type. Mica dielectric units, hermetically sealed in molded bakelite, are especially recommended because they are not affected by moisture, which is a condenser's greatest foe. Electrolytic condensers are not satisfactory for R. F. applications.

The importance of short leads in 2½ and 5-meter receivers and transmitters is especially stressed since a difference of only an inch or two in the placement of the by-passes may spell the difference between success and failure, in these ultra high frequency circuits.

With the coming of warm weather, the increased use of electric fans and refrigerators will bring with it new problems in the way of radio interference. Although the radio and electrical industries are making a concerted drive against interference-creating devices and many municipalities have passed anti-noise ordinances, there are still countless numbers of sparking motors to contend with.

The most effective attack on the noise problem is to isolate the offending machine and to equip it with a simple filter consisting merely of two fixed condensers in series, with the outer connections across the motor brushes and the center connection grounded to the motor frame. However, in the majority of cases encountered by radio set owners and service men, the source

of the interference cannot be readily located.

The only possible cure in cases of this kind is the use of an interference filter consisting of both by-pass condensers and radio-frequency chokes. This filter is connected to the line cord of the receiver, and in nine cases out of ten it is very effective because it prevents the noise from entering the receiver through the power line, which is its usual carrier.

Of course, no line filter will eliminate or even reduce noise that is picked up by the aerial or its lead-in.

A line filter is the easiest thing to try first, as it can be plugged into service in a few seconds. If the noise continues, it is not reaching the set through the electric wires, and the erection of an antenna of the noise-reducing type should be considered. Radio dealers sell filters on a trial basis, as they know conditions vary a great deal. A filter may be 100 per cent effective in one house and not effective at all in another.

The constantly repeated precaution about observing the polarity of electrolytic condenser terminals, plus the fact that many small mica condensers have color code markings on them, has created confusion among some set builders and experimenters, who seem to think that these markings have a polarity significance. Red and black are so universally used to indicate positive and negative on countless batteries and other electrical devices that it is not difficult to appreciate this misunderstanding.

Although electrolytic condensers will not work if connected contrary to their marked polarity, mica and paper condensers can be used either way.

The value of the condenser, in microfarads (mmf.), is given by three dots of any of these colors: black, 0; brown, 1; red, 2; orange, 3; yellow, 4; green, 5; blue, 6; violet, 7; gray, 8; white, 9.

Radio service men accustomed to handling color coded resistors will have no trouble reading condenser values, as the ten colors have the same meaning in connection with resistance value except that the result is expressed in ohms instead of in million-millionths of a farad.

THE 171-FOOT TOWER AT W6AM

By DON C. WALLACE, W6AM
4214 Country Club Drive, Long Beach, California

This tower is constructed of wood, the corner pieces being 2x2's and the cross pieces being 1x2's. The entire tower is four feet in diameter at the middle, tapered towards the ends into a 4x6 at the top and a 6x8 at the bottom. Most of the actual work was done by W6LFC, but, of course, we all did lots of pounding and painting, almost all of the boys in the neighbor-



hood having had a hand in pounding the nails.

On Saturday morning, W6CGW and W6LFC and the writer all appeared on the scene suddenly, and in the course of the next two hours we set it on end, using the telephone pole as a gin pole. It would have gone up a great deal more quickly, but the wheels on our cars started to skid, thus delaying the work somewhat.

The telephone pole is guyed securely with three steel cables, but outside of that there are no (official) guy wires. The antennas are so arranged, however, that they tend to guy the top, so there is that additional protection in the case of heavy winds.

Many people would think an aerial, to be correct, should go between the

two towers, the 171-foot one in the front and the 107-footer in the rear.

Such is not the case, however, as there is no antenna between the two towers. Each tower serves as a support for directional antennas. There are fourteen of these in all, and they are all used for both reception and transmission.

A list of these antennas is as follows:

1. Five-meter "5Q" on top of the 171-foot tower. This has a 300-foot transposed feed line into the station. It comes down the tower and run across the lot around to the back of the house where the radio room is located.

2. A "5Q" antenna on the rear 107-foot tower. This has a transposed feed line about 150 feet in length. The second "5Q" is used for duplex purposes.

3. A 10-meter single-wire feed Hertz at the 150-foot level swung out about 50 feet away from the tower towards the right of the picture.

4. A 20-meter 8 half-wave Hugo curtain antenna, at an 80-foot level, swung completely across a vacant lot. This uses one of the upper antennas stretched out 300 feet as a support, to give it the proper directional characteristics. This is very directional toward New York and vicinity. A line drawn between here and there will show the principal parts of the United States well covered (such as Kansas City, Iowa, Chicago, Ohio). This gives rather wonderful results on 20-meter phone and CW. It works as a bi-directional antenna, and after the East Coast fades out, it is very fine for Australia, New Zealand, and points in that direction for both phone and CW.

5. A vertical single wire-fed half-wave Hertz at the 90-foot height on the 107-foot tower. This is used for directions other than that covered with the Hugo beam.

6. A 20-meter half-wave Hertz at the 160-foot level, semi-directional to South America.

Another 20-meter half-wave Hertz antenna directional to Florida at the 90-foot level.

7. A 40-meter three-wave-length V-beam, pointed towards Australia, in the direction towards the reader.

8. A diamond pointing east towards the East Coast with an average height

of 110 feet. This is used on the 40-meter band.

9. A 40-meter V-beam, $1\frac{1}{4}$ -wavelength per side, directional towards the Orient (the back side of this is directional towards South America.)

10. Forty-meter Zepp at the 90-foot height.

Ten-meter Zepp at the 90-foot level, directional in the opposite direction to the one at the 150-foot level.

11. Forty-meter Johnson "40Q" at the 90-foot height (rear).

12. A plain receiving doublet 100 feet long with 250-foot twisted lead-ins.

13. An 80-meter half-wave (130 feet) matched impedance at the 160-foot level almost horizontal.

Of course, there are many half-inch halyard lines to the top of the towers. Other experiments can very easily be conducted. The tower is also quite easily climbed for permanent or semi-permanent installations.

The feed lines come down, and are distributed over the lot as well as possible.

Somewhat of an idea of the height of the tower may be gained from the fact that at the base of the tower can be seen our two-story house, in which are located the two radio rooms, one being used as a workshop and the other as a radio room.

There are quite a number of receiving sets hooked up as follows:

1. Phanstiehl all-wave-band spread amateur-type receiver used with a Peak pre-selector.

2. Five-tuned stages radio frequency for $2\frac{1}{2}$, 5, 10, 20, 40, 80, 160.

3. Five-meter receiver.

4. Ten-meter receiver.

5. All-wave BCL job for checking purposes.

6. Combination BCL and police set.

7. Five-meter receiver permanently installed in the car together with a 50-watt transmitter.

8. Forty-meter receiver portable (in a suitcase with its transmitter).

The various transmitters continually available are as follows:

1. Thousand-watt 20-meter radio with Turner crystal mike and pre-amplifier. (This set is also good for phone on 10 meters, 80-160 meters.)

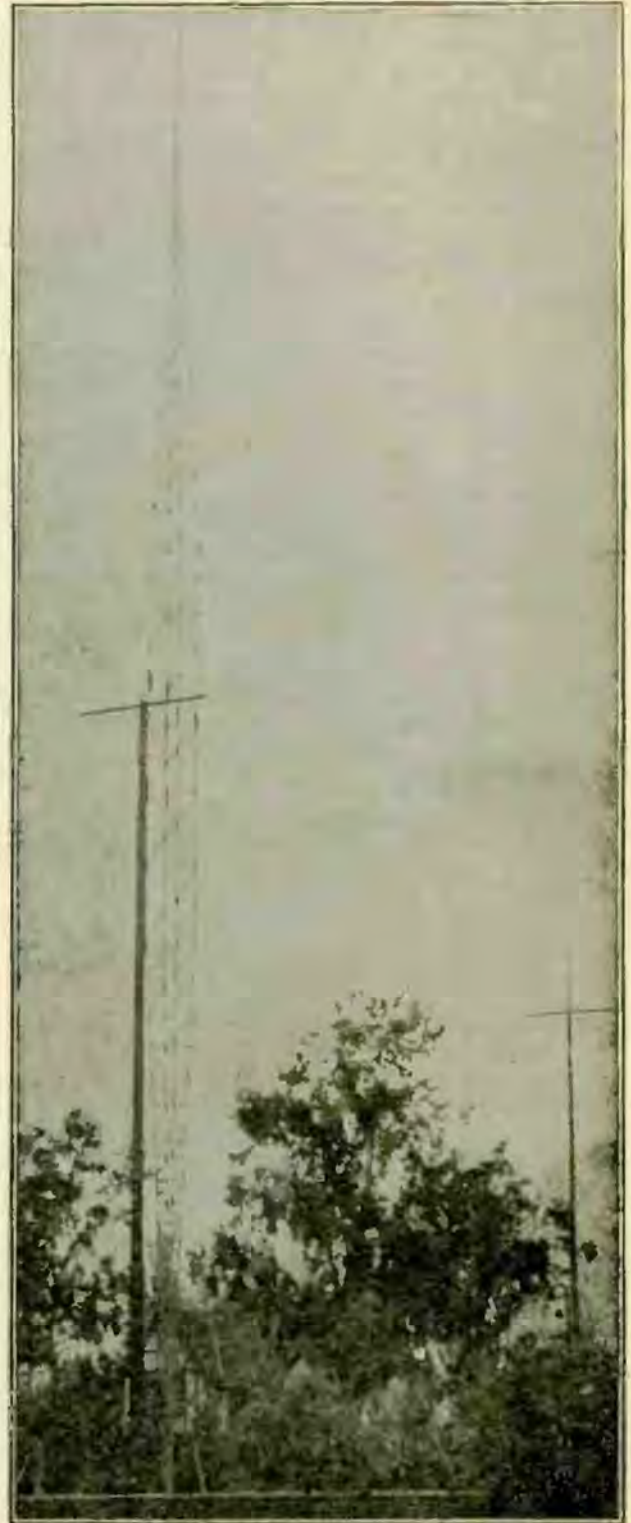
2. This same 1000-watt job for CW on 10, 20, 40, 80 and 160 meters with semi-quick change of bands.

3. Two hundred-watt 5-meter radio phone.

4. Fifty-watt mobile transmitter

permanently installed in the automobile.

5. Forty-meter crystal controlled 200-watt portable complete with power



supply and receiver, used while on the road.

There are several minor towers on the edges of the country side, used to

(Continued on page 29)

SHORT WAVE CLUB LETTERS

It is fast becoming a recognized belief among those who have become familiar with the technique and accomplishments of Shortwave Broadcasting that it is destined to be the most practical and far-reaching influence for good-will and peace among the nations of the earth that the earth has ever known. It's possibilities in this direction are unlimited.

Picture a radio listener sitting down to his receiver and hearing beautiful music played or sung in a dozen distant countries of the world. Music is a universal language and creates a natural bond of sympathy in the souls of even the most diversified races regardless of their color or language. Picture again the listener hearing laughter and common-place conversation between representative citizens of two countries thousands of miles apart both geographically and in customs and beliefs. Is it too much to believe that the contagion of understanding created by such very human incidents will spread to the people of all nations and so bind them together in a bond of universal friendliness that only peace and good-will could result?

To the ordinary layman the mere mention of shortwaves conjures up the picture of a highly technical and complicated subject too vague to be considered. This lack of knowledge is the one present obstacle in the path of progress of this mighty influence.

As it is only through the medium of short waves that extremely long distance radio broadcasting can be accomplished it becomes at once an all-important mission to acquaint the uninitiated with its workings. How can this feat of mental alchemy be accomplished

There has recently been formed in Los Angeles, California, a most unique chapter of the International DX-ers Alliance known as the Radio Fellowship. It's membership is composed of experienced DX or long-distance radio listeners, eminent radio technicians and engineers, broadcasting executives, radio manufacturing executives, in fact it's club roster represents all branches of the Radio Art with all united on a single object. That object is to acquaint the public in a practical and illustrative way with the pleasures, benefits and workings of long-distance Radio reception. Their plans for the

accomplishment of this purpose are simple and interesting.

The Radio Fellowship has established a receiving station in View Park, this location having been chosen because it has been proven to be ideal for long-distance reception. Tests made at the organization's Club House have indicated perfect reception of foreign programs. Plans are being completed for the installation of telephone lines connecting KFWB, KFI and other stations to this Club House in order that broadcast listeners may regularly hear foreign features by way of shortwaves. In addition, occasional lectures will be given at the Club House by eminent authorities to which all interested will be invited.

It is easy to believe that Radio Fellowship may become one of the crucibles in which will be created the connecting link of knowledge which will bring to the public at large an understanding of one of the great forces for creating peace in the world.

Sincerely yours, M. H. RYDER.

* * *

I should like to add two stations to your short wave list: PLV, Bondon, Java, at 9.42, has been putting on a program between 7:00 and 7:30 a.m. that comes in very strong; and JVF, Japan, at 15.6, has been experimenting with musical programs between 12:30 p.m. and 1:00 p.m. for several days. They are planning to have a rebroadcast by the NBC.

I have got England on 11.75 around about 12:30 p.m. several times. A few days ago I heard Big Ben strike 8 p.m. In the afternoon I have got GSB quite clearly at about 5 p.m., and in the evenings at about 10:30. At 11 p.m. the other night I heard the finish of the Sydney program. They had a miniature Big Ben strike 5 a.m., and the Kookaburra Bird made plenty of noise. I have an 11-tube Philco with a Miller pre-selector.

Yours truly, C. L. COOPER.

* * *

Starting in June, a Japanese short wave station will come on the air with news, music, speeches, and general entertainment. It will broadcast from 5:30 to 6:30 p.m. P.S.T. daily. It is JVH, 20-k.w. in power, and using three different frequencies: 14.6, 10.6, and 7.51 megacycles.

ROY H. MATSUMOTO.

Short Wave Log

Megacycles	Meters
4.1 HCJB	73 Quito, Ecuador 5:30 to 8:30 p.m., ex. Monday
4.24 RV15	70.2 Kharabovsk, U.S.S.R. Daily, 12 p.m. to 5 a.m.
4.29 XMO	70.2 Tijuana, Mexico 4 p.m. to 12 noon.
4.6 HO2BT	65.89 Guayaquil, Ecuador Wed. and Sat., 6:30 to 7:45 p.m.
5.1 HJ5ABC	58.8 Cali, Colombia Tues. and Fri., 5 p.m. to 7:00 p.m.
5.14 PMY	58.3 Bandoeng, Java Daily, 4 a.m. to 8 a.m.
5.66 XQAL	52.9 Shanghai, China Daily, 2 a.m. to 5 a.m.
5.78 OAX4D	51.9 Lima, Peru Wed., Sat., 6 to 8:30 p.m.
5.85 YV5MO	51.3 Maracaibo, Venezuela Daily, 2 to 7 p.m.
5.87 HJ2ABC	51.1 Cucuta, Colombia Daily, 3:30 to 6 p.m.
5.94 TGX	50.5 Guatemala City, Guata. Daily except Sunday, 5-7 a.m.; 5-9 p.m.
5.97 HVJ	50.2 Vatican City, Rome, Italy Daily except Sunday, 11-11:15 a.m. Sunday, 2-2:30 a.m.
6.00 XBBT	50.0 Mexico City, D. F. Daily, 4 p.m. to 12 p.m.
6.00 HIX	50.0 Santo Domingo, D.R. Tues. and Fri., 8:10 to 10:10 p.m.
6.01 OOO	49.9 Havana, Cuba Daily, 6:40 to 9:30 p.m. Saturday, 1 to 4 p.m.
6.02 DJO	49.8 Berlin, Germany Daily, 2 to 7 p.m.
6.03 HP513	49.7 Panama City, Panama Daily, 5 a.m. to 7 a.m., 8 a.m. to 10 a.m.

19-METER BAND

Megacycles	Meters
6.03 HP5B	49.7 Panama City Daily, 5 p.m. to 7:30 p.m.
6.05 GSA	49.5 Daventry, England Daily, 3 to 5 p.m.
6.06 W3XAU	49.5 Philadelphia, Pa. Daily, 5 to 7 p.m.
6.06 WSXAL	49.5 Cincinnati, Ohio 4 to 5 p.m.—8 to 10 p.m.
6.07 HJN	49.40 Bogota, Colombia 3—8 p.m.
6.08 2EO	49.3 Rome, Italy 3 to 4:30 p.m., Mon., Wed., Fri.
6.08 W9XAA	49.3 Chicago, Ill. Sunday, 11 a.m. to 12:30 p.m.
6.08 CP5	49.3 La Paz, Bolivia 4:45 to 6 p.m.
6.08 VH9HX	49.3 Halifax, N. S. 6 to 8:30 a.m.—1 to 8 p.m.
6.09 VH9GW	49.2 Toronto, Canada 3 to 8 p.m.
6.10 2TJ	49.2 Johannesburg, S. Afr. 1:30 to 4 a.m.
6.10 HJ4ABL	49.2 Manizales, Colombia 8 to 9 p.m., Irregular.
6.10 GSL	49.2 London, England Tues., Thur., Sat., Sun., 7 p.m. to 8 p.m.
6.10 W9XP	49.1 Downers Grove, Ill. 5 to 6 a.m.—9 to 10:30 p.m.
6.10 W3XAL	49.1 Bound Brook, N. J. Mon., Wed., Sat., 1 to 4 p.m.
6.1 YV2EO	49 Caracas, Venezuela 2 p.m. to 6:30 p.m.
6.12 HJ1ABE	49.05 Cartagena, Colombia 4 to 7 p.m.

19-METER BAND

Megacycles	Meters
6.12 W2XE	49.0 New York City, N. Y. Daily, 2 to 7 p.m.
6.13 ZGE	48.9 Malay States Su., Tues., Fri., 3:40 to 5:40 a.m.
6.14 W8XK	48.8 Pittsburgh, Pa. Daily 1:30 to 9 p.m.
6.15 CJRO	48.7 Winnipeg, Canada Daily, 4 to 9 p.m. Sunday, 2 to 7:30 p.m.
6.16 YV3RC	48.7 Caracas, Venezuela Daily, 1:30 to 7 p.m.
6.2 HJ3ABF	48.4 Bogota, Colombia Daily, ex. Sunday, 4 to 8 p.m.
6.2 CTIGO	48.4 Portugal 3 to 4:30 p.m.
6.22 HJ2ABA	48.2 Colombia 5 to 7 p.m.
6.25 H11A	48 Santo Domingo Daily, ex. Sunday, 3:40 to 6:40 p.m.
6.31 H1Z	47.5 Santo Domingo 8 to 9:30 p.m.
6.37 YV4RC	47 Caracas, Venezuela 1:30 to 6 p.m., ex. Sunday
6.42 W3XL	46.7 Bound Brook, N. J. Daily, 5 to 10 p.m.
6.44 HJ1ABB	46.5 Barranquilla, Colombia Daily, 3 to 7 p.m.

Megacycles	Meters
6.49 HJ5ABD	46.2 Colombia 4 to 7 p.m.
6.52 YV6RV	46 Valencia, Venezuela 1:30 to 6:30 p.m.
6.59 H14D	45.5 Santo Domingo 1:30 to 4:30 p.m., ex. Sunday.
6.62 PRADO	45.3 Rio Bomba, Ecuador Thursday, 6 to 8:30 p.m.
6.66 HC2RL	45.0 Guayaquil, Ecuador Sunday, 2:45 to 4:45 p.m. Tuesday, 6 to 8 p.m.
6.71 TIEP	44.7 San Jose, Costa Rica Daily, ex. Sun., 4 to 8 p.m.
6.75 JVT	44.4 Nazaki, Japan Daily, 4 to 7:40 a.m., Irregular
7.00 VK3ZX	42.8 Victoria, Australia Sundays, 9:30 p.m. to 12 p.m.
7.2 HJ4ABB	41.6 Colombia 5 to 7 p.m., Tues. and Fri.
7.28 HJ1ABD	41.2 Cartagena, Colombia 4:30 to 6 p.m. ex. Sunday.
7.4 HJ3ABD	40.5 Bogota, Colombia 4 to 8 p.m. ex. Sun.
7.79 HBP	38.4 Geneva, Switzerland Saturday, 2:30 to 3:15 p.m.
7.8 HC2JSB	38.3 Ecuador 4 to 8 p.m.

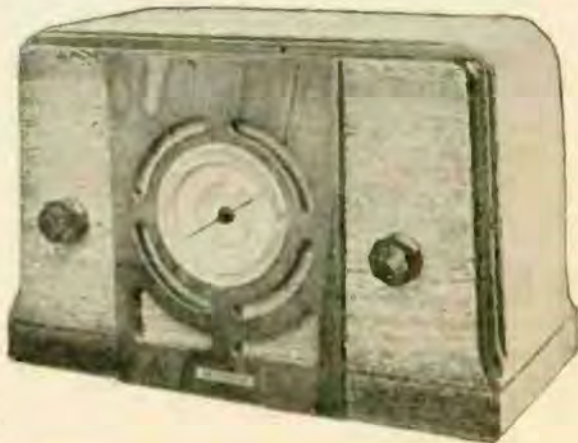
Royale Radio

LEADS THE FIELD

Model 53A \$19.95

5-Tube Superhetrodyne

ROYALE RADIO MFG. CO.,
1417 PICO ST., LOS ANGELES, PR. 8001



Megacycles	Meters
9.41 PLV	31.9 Bandoeng, Java 6:45 to 10 a.m.
9.43 COH	31.8 Daily, Havana, Cuba 7 to 9 a.m.—2 to 3 p.m.—5 to 7 p.m.
9.50 PEP5	31.5 Rio de Janeiro, Brazil Daily ex. Sunday, 2:30 to 3:15 p.m.
9.51 VK3ME	31.5 Melbourne, Australia Wed., Sat., 2 to 4 a.m.
9.51 GSB	31.5 Daventry, England Daily 8:30 to 10:30 p.m. 9 a.m. to 2:30 p.m.—3 to 5 p.m.
9.53 W2XAF	31.4 Schenectady, N. Y. Daily ex. Sunday, 2:30 to 8 p.m.
9.54 LKJI	31.4 Oslo, Norway Daily, 2 to 5 a.m.
9.59 HP5J	31.3 Panama City, Panama 4:30 to 7 p.m.
9.56 DJA	31.3 Berlin, Germany Daily ex. Sunday, 2 to 6 p.m.
9.58 GSC	31.3 London, England Tues., Thur., Sat., Sun., 3 p.m. to 5 p.m.
9.57 W1XX	31.3 Springfield, Mass. Daily, 3 a.m. to 9 p.m.

31-METER BAND

Megacycles	Meters
9.58 VK3LE	31.3 Melbourne, Australia Daily ex Sunday, Midnight to 4:30 a.m.
9.59 HBL	31.2 Geneva, Switzerland Saturday, 2:30 to 3:15 p.m.
9.59 W3XAU	31.2 Philadelphia, Pa. 8 a.m. to 3 p.m.
9.60 CT1AA	31.2 Lisbon, Portugal Tues., Thurs. and Sat., 1:30 to 3 p.m.
9.6 EZR	31.15 French Indo China 6:30 to 7 a.m. (Irregular)
9.86 EAQ	30.4 Madrid, Spain Daily ex. Saturday, 5:15 to 7:30 p.m. Saturday, 1 to 3 p.m.
10.33 ORK	29.0 Ruyssede, Belgium Daily, 10:30 a.m. to 12 noon
10.74 JVM	27.9 Nazaki, Japan 1 to 3:30 a.m.
11.7 HJ4ABA	25.6 Colombia 2 to 7 p.m.
11.72 PYA	25.6 Paris, France 6 to 10 p.m.—11 p.m. to 1 a.m.
11.72 CJEX	25.6 Winnipeg, Canada Sat., 7 to 12 p.m.—Sun., 3 to 1 a.m.
11.75 GSD	25.5 Daventry, England Daily 9 a.m. to 2:30 p.m.—8:30 to 10:30 p.m.

31-METER BAND

Solve Your Replacement Problems with

Curtis Electrolytic
CONDENSERS



CLAROSTAT—Volume Controls
CONTINENTAL—Carbon Resistors
RAYTHEON—Tubes
THORDARSON—Transformers

REPRESENTED BY

J. J. Perlmuth
225 EAST PICO ST.
LOS ANGELES
PROSPECT 8564

Megacycles	Meters
11.77 DJD	25.5 Berlin, Germany Daily, 9 a.m. to 1:30 p.m.
11.80 W1XAL	25.4 Boston, Mass. Irregular.
11.83 W2XE	25.3 New York City Daily, 11 a.m. to 1 p.m.
11.86 GSE	25.2 Daventry, England Daily, 6 a.m. to 9 a.m.
11.87 W8XX	25.2 Pittsburgh, Pa. Daily, 1:30 to 6 p.m.
12.00 RNE	25.0 Moscow, U.S.R.R. Daily, 5 a.m.
14.4 TIU	20.7 Cartago, Costa Rica Saturday, 11 a.m.
14.98 KYA	20.0 Manila, P. I. Phones.
15.00 WEM	19.9 Rocky Point, N. Y. Sunday, 10:30 a.m.
15.14 GSP	19.8 Daventry, England Daily, 3 to 6 a.m.

25-METER BAND

19-METER BAND

Megacycles	Meters
15.20 DJB	19.7 Berlin, Germany Daily, 1:30 to 4:30 a.m.
15.21 W8XX	19.7 Pittsburgh, Pa. Daily, 5 a.m. to 1:30 p.m.
15.22 PCJ	19.71 Edinoven, Holland 7:30 to 8:30 p.m.
15.24 FYA	19.6 Paris, France Daily, 3 to 7 a.m.
15.27 W2XE	19.6 New York City, N. Y. Daily, 7 a.m. to 9 a.m.
15.33 W2XAD	19.5 Schenectady, N. J. Daily, 11 a.m. to 1 p.m.
15.6 JVF	19.2 Nazaki, Japan 1:30 to 2 p.m., occasionally
17.76 PHI	16.9 Huizen, Holland Daily ex. Tues., Wed., 5:30 to 7 a.m.
17.78 W3XAL	16.8 Bound Brook, N. J. Daily, 6 to 7 a.m.—Tues., Thurs. and Fri., 11 a.m. to 12 p.m.
21.54 W8XX	13.9 Pittsburg, Penn. 3 to 5 a.m.

19-METER BAND

The Parts Warehouse of the West

**A COMPLETE STOCK OF
STANDARD PARTS**

DEALERS

Park Next Door at Our Expense

RADIO SUPPLY CO.

H. A. DEMAREST, President

912-914 South Broadway

VAndike 3178—3179—3170

Los Angeles

Classified Programs

Saturday, June 15, 22, 29

DIAL TIPS FOR TODAY	
P.M.	
12:30—Baseball Games	KNX
2:00—Frederich Wm. Wille	KHJ
4:00—Hit Parade	KFI
5:30—Al Jolson	KFI
5:30—California Melodies with Delmar Edmundson	KHJ
6:00—"Fiesta" from Canada	KHJ
7:00—Calmon Luboviski and Claire Mellonino	KNX

DRAMATIC SKETCHES	
P.M.	
5:20—Cecil and Sally	KFOX
10:30—Miniature Theatre	KFI

ADVENTURE SERIALS	
P.M.	
7:15—Bobby and Betty	KFOX
7:15—Flash Gordon	KFWB

NEWS, STOCKS, and LOST AND FOUND	
A.M.	
6:30—Opening Stock Market	KFI
6:45—Morning Headlines	KMTR
7:30—Opening N. Y. Stocks	KHJ
7:30—Opening Grain Market	KFOX
9:15—News	KFI
9:30—News	KHJ
9:45—News	KFWB
9:45—News	KFOX
11:30—News	KFOX

P.M.	
12:05 and 6:30—Monitor Views the News	KMTR
12:15—News	KECA
12:40—Closing Grain Report	KFOX
1:00—Federal and State Market Reports	KFI
1:25—Closing N. Y. Stocks	KHJ
3:05—Religion in the News	KFI
4:00—News	KFOX
6:00—News	KFWB
6:00—News	KMTR
6:00—News	KFOX
6:15—News	KNX
9:00—News	KMTR
9:00—News	KNX
10:00—News	KFWB
10:00—News	KHJ
10:00—News	KFOX
11:15—News Commentary	KMTR

COMMENTATORS	
P.M.	
2:00—Frederick Wm. Wille	KHJ
7:00—Raine Bennett	KECA
7:45—Fish and Game Talk	KMTR
7:45—Fish and Game Talk	KHJ

EDUCATIONAL PROGRAMS	
A.M.	
9:00—County Medical Ass'n Talk	KFI
9:30—L. A. Public Schools	KECA
9:30—National Farm and Home Hour	KFI
P.M.	
12:15—Western Agriculture	KFI
12:45—L. A. City Hall Talk	KFOX
1:30—Our American Schools	KFI
1:45—L. A. City Hall Talk	KFWB
2:45—The Master Builder	KFI
3:15—Our National Parks	KFI
8:00—Travel Talk	KFOX
8:15—Board of Education	KMTR

VARIETY PROGRAMS	
A.M.	
7:00—The Honeymooners	KFI
7:15—Vass Family	KFI
9:00—Jack Shannon	KHJ
9:15—Jack and Jill	KHJ
9:45—Billy Mills & Co.	KHJ
10:00—Madison Ensemble	KHJ
11:00—Week-End Revue	KFI
11:30—Buffalo Presents	KHJ
P.M.	
2:00—Amateur Hall of Fame	KNX
4:00—Hit Parade	KFI
4:30—Modern Minstrels	KHJ
5:00—Radio City Party	KFI
5:30—Al Jolson	KFI
6:30—KFOX School Kids	KFOX
6:30—Carefree Carnival	KFI
7:00—National Barn Dance	KFI
7:30—Juvenile Revue	KFOX
7:30—Juvenile Revue	KFWB
8:00—Hollywood Barn Dance	KNX
9:00—Comedy Stars of Hollywood	KHJ
9:15—Gravelpit Courtroom	KHJ
9:30—Musical Moments	KHJ

HILL-BILLY and COWBOY SONGS	
A.M.	
7:00—Covered Wagon Jubilee	KMTR
10:00—Oklahoma Range Riders	KMTR
11:30—Lonely Troubadours	KFAC
P.M.	
5:00—Stuart Hamblin's Gang	KMTR
5:15—Gold Star Rangers	KFWB
7:45—King Cowboy	KNX
8:00—Arizona Wranglers	KNX

POPULAR MUSIC	
A.M.	
9:00—Oriental Gardens Orchestra	KECA
P.M.	
12:00—Among My Souvenirs	KHJ
12:30—Chicgoans	KHJ
12:15—Drury Lane, tenor	KNX
1:15—Jackie Heller, Tenor	KFI
2:30—Morin Sisters	KFI
3:45—Sax Appeal	KFI
5:00—Jeanne Dunn	KFWB
6:15—Piano Team	KMTR
8:00—Gene Austin	KMTR
8:00—Charlie Hamp	KFI
8:30—Sons of Pioneers	KFWB
11:00—Gene Austin	KMTR

MUSICAL PROGRAMS INSTRUMENTAL AND VOCALISTS	
A.M.	
8:30—Words and Music	KFI
8:15—Genia Fonarlova and String Trio	KFI
10:30—Madison Ensemble	KHJ
10:30—Classic Hour	KECA
11:00—On the Village Green	KHJ
11:00—Modern Piano Music	KNX
11:30—NBC Musical Guild	KFI
P.M.	
12:30—Concert Favorites	KECA
1:30—Concert Recordings	KFWB
1:30—Biltmore Concert Orchestra	KECA
1:30—Elsie Thompson-Evelyn MacGregor	KHJ
2:00—Classic Hour	KECA
2:15—Concert Miniatures	KHJ
3:00—San Diego Symphony Orchestra	KHJ
4:00—Concert Favorites	KECA
4:00—String Orchestra	KMTR
5:30—California Melodies	KHJ
5:30—Symphony Orchestra with Solosist	KHJ
6:00—Enil Baffa's Concert Orchestra	KNX

6:00—Song Time in Tennessee	KHJ
6:30—California Melodies	KHJ
7:00—Calmon Luboviski and Claire Mellonino	KNX
7:00—Symphonic Strings	KHJ
7:00—Calmon Luboviski and	
7:30—Neil Russell, baritone	KECA
8:00—Musical Program	KECA
8:30—Pan Americana	KFI
9:00—Waltz Time	KFI
9:30—Pan Americana	KFI
9:30—Caselotti Recital	KMTR
9:30—Chamber Music	KECA
9:30—Slumbertime	KFWB
10:00—Musical Celebrities	KECA
10:30—Russian Eagle Quartette	KNX

DANCE ORCHESTRAS

A.M.	
8:30—Al Roth's Syncopators	KHJ
9:00—Jean Brunesco's Orchestra	KHJ
10:00—Louis Panico's Orchestra	KHJ
P.M.	
1:00—Emory Deutsch's Orchestra	KHJ
1:30—Pontrelli's Orchestra	KNX
2:00—Biltmore Hotel Orchestra	KFI
6:00—"Fiesta" from Canada	KHJ
6:30—Ben Bernie	KHJ
7:00—Abe Lyman's Orchestra	KHJ
7:30—Claude Hopkins Orchestra	KHJ
8:08—Cocoanut Grove Orchestra	KFI
8:00-10:00—Dance Orchestras	KHJ
8:30—Jimmie Grier's Biltmore Hotel Orch.	KFI
9:00—Al Lyon's Orchestra	KFWB
9:00—Al Lyon's Orchestra	KFOX
10:15-12—Dance Orchestras	KFI
10:15-12:00—Dance Orchestras	KFWB
10:15-12:00—Dance Orchestras	KHJ
10:30-12:00—Dance Orchestras	KFOX
10:45—Pontrelli's Orchestra	KNX

Sunday, June 16, 23 and 30

DIAL TIPS FOR TODAY

A.M.	
8:45—International Broadcast	KHJ
9:00—Compinsky Trio	KHJ
10:30—Radio Theater	KFI
12:00—International Goodwill Program (June 25)	KFI
P.M.	
1:00—Kansas City Symphony	KFI
3:30—Joe Penner	KFI
4:00—Rhythm at 8, Ethel Merman	KHJ
5:00—Detroit Symphony	KHJ
7:15—Cornelia Otis Skinner	KFI
7:30—Jack Benny	KFI
7:45—Strange As It Seems	KHJ
8:30—One Man's Family	KFI
9:00—Vanity Fair	KFWB
9:30—Romantic Presidents	KMTR

RELIGIOUS SERVICES and TALKS

A.M.	
8:00—St. Brendan's Catholic Church	KMTR
8:00—Church Quarter Hour	KFI
9:30—Sunday Forum	KECA
9:30—Judge Rutherford	KNX
10:30—Dr. Mathews	KNX
10:45—Temple Baptist Church	KNX
11:00—First Methodist Church	KFAC
11:00—St. Luke's Church	KFOX
11:00—Fundamental Church	KMTR
11:00—First Unitarian Church	KECA
P.M.	
1:00—Country Church of Hollywood	KHJ
1:00—Christian Science	KMTR
2:00—Catholic Hour	KECA
2:00—Christian Science	KFOX
4:30—Dr. Martin Luther	KNX
4:30—Rabbi Magnin	KHJ
4:30—Nazarene Church	KFOX
5:15—Dr. Mathews (first Radio Church)	KNX
5:30—Latter Day Saints	KFAC
5:45—Lutheran Program	KECA
6:30—Rev. C. E. Fuller	KNX
8:00—Christian Science	KFOX
8:00—Presbyterian Church	KNX
8:00—Church of the Open Door	KFAC
9:15—Dr. Martin Luther	KNX

DRAMATIC PROGRAMS

A.M.	
10:30—Radio Theater	KFI
P.M.	
12:30—Sperry Sunday Special	KFI
2:00—Makers of History	KFI
2:30—Grand Hotel	KFI
4:00—Dickens Play	KMTR
5:30—Sunday Players	KFWB
6:15—The Shadow Speaks	KFOX
7:15—Cornelia Otis Skinner	KFI
7:45—Strange As It Seems	KHJ
8:30—One Man's Family	KFI
9:00—Vanity Fair	KFWB
9:30—The Three Musketeers	KFI
9:30—Romantic Presidents	KMTR

ADVENTURE SERIALS

P.M.	
5:45—Adventures of Flash Gordon	KFOX
7:30—The Boy Detective	KFOX
7:30—Nick Harris	KECA

NEWS

P.M.	
6:00—News	KFAC
6:00—News	KECA
6:00—News	KFOX
9:00—News	KECA
9:00—News	KNX
10:00—Richfield Reporter	KFI
10:00—News	KHJ

COMMENTATORS

P.M.	
4:30—Rabbi Edgar Magnin	KHJ
6:45—Congressional Opinion	KHJ

EXPERT AUTO RADIO INSTALLATION

and

GENERAL AUTOMOBILE REPAIRING

DAY—NIGHT MONTHLY STORAGE GARAGE

BRAKE ADJUSTMENT 50c WITH THIS AD

O. E. REITEN

25 Years' Experience

3412 West Pico at Arlington, Los Angeles

Parkway 8508

EDUCATIONAL PROGRAM

A.M.	
9:00—Lal Chand Mehra	KNX
9:30—Real Estate Talk	KFI
9:45—Dr. Casselberry	KFI
10:00—Words to the Wise	KFI
P.M.	
1:30—Louise Johnson, Cosmic Law	KNX
1:30—Vocational Adjustment	KECA
4:00—Charles Frederick Lindsley	KNX
5:00—Ethel Hubler, Talk	KNX
6:45—Congressional Opinions	KHJ
9:30—Readers' Guide	KECA

VARIETY AND MUSICAL COMEDY

A.M.	
9:00—Breakfast Club	KMTR
9:30—He, She, They	KHJ
12:00—St. Louis Parade	KHJ
P.M.	
1:30—House By the Side of the Road	KFI
2:00—National Amateur Night	KHJ
3:00—Roadways of Romance	KHJ
4:00—Rhythm at Eight	KHJ
4:00—Amateur Hour	KFAC
4:00—Major Bowes' Amateur Hour	KFI
5:00—Manhattan Merry-Go-Round	KFI
6:00—Gibson Family	KFI
7:00—Revue Musicale	KMTR
8:00—Hi-Jinks	KFWB

COMEDIANS

P.M.	
3:30—Joe Penner	KFI
7:30—Jack Benny	KFI

COWBOY AND HILL-BILLY SONGS

A.M.	
10:30—Stuart Hamblin's Gang	KMTR
12:00 noon—Gold Star Rangers	KFWB
P.M.	
5:00—Stuart Hamblin's Gang	KMTR
9:00—Beverly Hill-Billies	KFOX
9:30—Dude Ranch	KNX

MUSICAL PROGRAMS

INSTRUMENTAL AND VOCAL

A.M.	
8:00—Major Bowes Capitol Theater	KECA
8:15—What Home Means to Me	KFI
8:15—Classic Hour	KECA
8:30—Radio City Music Hall	KFI
8:30—Romany Trall	KHJ
9:00—Compinsky Trio	KHJ
10:00—Maurice Zam, Concert Pianist	KECA
10:15—Henri Deering, Concert Pianist	KFI
11:00—Symphonic Hour	KHJ
P.M.	
1:00—Kansas City Symphony Orchestra	KFI
1:15—Emil Baffas Concert Orchestra	KNX
1:30—Rose Hills Ensemble	KHJ
1:45—Hollywood Conservatory of Music	KECA
2:00—Ardin Classics	KMTR
2:00—Exposition Park Concert	KNX

2:00—Catholic Hour	KECA
2:30—Music of Mexico	KECA
3:00—Classic Hour	KECA
3:00—Sarah Kriendler, violinist	KFI
3:30—Classic Hour	KECA
4:30—U.S.C. College of Music	KECA
4:45—Marshall Sohl, tenor	KHJ
5:00—Chamber Music	KECA
5:00—Ford Symphony Orchestra	KHJ
5:30—American Musical Revue	KFI
6:00—Calmon Luboviski and Claire Mellonino	KNX
6:15—Twilight Reveries	KECA
6:30—Fray and Braggotti	KHJ
6:30—Russian Gypsies	KFWB
7:00—Sacred Concert	KECA
7:00—Salon Moderne	KHJ
7:45—Music of Mexico	KECA
8:00—Silken Strings	KFI
8:00—Concert Favorites	KECA
7:00—Musical Mirrors	KHJ
9:30—Slumbertime	KFWB
9:45—Musical Moments	KHJ
10:00—Musical Celebrities	KECA
10:30—Bridge to Dreamland	KFI

POPULAR MUSIC

A.M.	
10:00—Lazy Dan	KHJ
10:30—Jean Leonard	KFWB
10:30—Maude Hughes	KHJ

P.M.	
2:30—Three Brown Bears	KHJ
3:15—Paul Martin and His Music	KFI
6:15—Hawaiian Program	KMTR
7:00—Jack Ross and Co.	KFI
10:00—Melody Lane	KMTR
10:15—King's Men	KFWB

DANCE ORCHESTRAS

P.M.	
6:00—Wayne King's Orchestra	KHJ
8:30—Frank Harley's Orchestra	KHJ
8:30—Carol Lofner's Orchestra	KFWB
9:00—Hotel Bismarck Orchestra	KFI
9:15—Roracio Yito's Orchestra	KHJ
9:30—Floyd Town's Orchestra	KHJ
10:15-12:00—Dance Orchestras	KHJ
10:30-12:00—Dance Orchestras	KFWB
10:45-12:00—Dance Orchestras	KFOX

Monday, June 17 and 24

DIAL TIPS FOR TODAY

A.M.	
11:00—Your Hostess	KHJ
P.M.	
4:15—Edwin C. Hill	KHJ
7:30—Voice of Firestone	KFI
8:30—"Road to Fame"	KHJ

CORNELL-DUBILIER

Condensers

EBY Sockets — KEN-RAD Tubes

OHIO

Carbon Resistors

PACIFIC COAST BRANCH OFFICE

W. BERT KNIGHT, Inc.

115 West Venice Blvd., Los Angeles

PROspect 4131

DRAMATIC SKETCHES

A.M.		
8:30	Mary Marlin	KHJ
10:00	Marie, the Little French Princess	KHJ
10:15	Romance of Helen Trent	KHJ
10:45	Happy Hollow	KHJ
11:30	Ma Perkins	KFI
P.M.		
12:00	Betty and Bob	KFI
3:15	Stories of the Black Chamber	KFI
3:30	Just Plain Bill	KFI
4:45	Secret Service Club	KHJ
5:30	Og, Son of Fire	KNX
5:45	Little Orphan Annie	KNX
9:30	Famous Trials of History	KMTR

COMEDY SKETCHES

A.M.		
8:15	The Gumps	KHJ
9:15	Mr. and Mrs. Skit	KHJ
11:15	Vic and Sade	KFI
P.M.		
4:45	Easy Aces	KFI
5:20	Cecil and Sally	KFOX
6:30	Lum and Abner	KNX
7:00	Eb and Zeb	KFOX
7:00	Amos 'n Andy	KFI
7:15	Oscar and Elmer	KFWB
7:15	Tony and Gus	KFI
7:30	The In-Laws	KNX
8:15	Frank Watanabe and Honorable Archie	KNX

ADVENTURE SERIALS

P.M.		
5:00	Six-Gun Justice	KHJ
6:00	Jack Armstrong, All American Boy	KNX
6:30	Max Baer's Serial	KFI
6:45	Air Adventures of Jimmie Allen	KFOX
6:45	Air Adventures of Jimmie Allen	KNX
7:15	Professor Perkins, Detective	KNX
7:15	Bob and Betty	KFOX
7:30	The Boy Detective	KFOX
7:30	Skybound	KMTR

NEWS, STOCKS, and LOST AND FOUND

A.M.		
6:30	Opening New York Stock Market Quotations	KFI
6:45	Morning Headlines	KMTR
7:30	Opening N. Y. Stocks	KHJ
7:30	News and Stock Reports	KFAC
9:45	News	KNX
9:45	News	KFI
9:45	Press Radio News	KFOX

9:45	Press Radio News	KFWB
10:30	Lost and Found	KFAC
10:40	Globe Trotter	KFAC
11:30	"Press-Telegram" News	KFOX
P.M.		
12:00	Lost and Found	KMTR
12:00	News	KNX
12:00	News	KFAC
12:05	The Monitor Views the News	KMTR
12:15	News	KEOA
12:30	News	KMTR
1:00	Federal and State Market Reports	KFI
1:25	Closing N. Y. Stocks	KHJ
3:40	The Globe Trotter	KFAC
4:00	News	KFOX
6:00	The Globe Trotter	KFAC
6:00	News	KFOX
6:00	News	KFWB
6:00	News	KMTR
6:15	News	KECA
6:15	News	KNX
6:30	Monitor Views the News	KMTR
9:00	News	KMTR
9:00	News	KNX
9:00	News	KECA
10:00	Richfield Reporter	KFI
10:00	News	KHJ
10:00	Press Radio News	KFWB
10:00	News	KFOX
10:10	Voice of the Globe	KHJ
11:00	News Commentary	KMTR

COMMENTATORS AND READERS

A.M.		
7:15	Tony Wons	KFI
10:30	Between the Bookends	KHJ
P.M.		
2:00	The Bookworm	KNX
3:00	Hollywood Lowdown	KMTR
3:00	Rush Hughes	KFI
4:15	Edwin C. Hill	KHJ
5:45	Once Upon a Time	KECA
7:00	Lou Creveling, Hollywood Observer	KHJ
7:00	Interview	KMTR

WOMEN'S PROGRAMS

A.M.		
9:30	Around the World Cooking School	KHJ
9:45	Nurse of the Air	KHJ
10:00	Ann Warner Chats with Her Neighbors	KFI
10:00	Prudence Penny	KFWB
10:00	Prudence Penny	KFOX
10:30	Mary Holmes	KNX
11:00	Fletcher Wiley	KNX

KURZ-KASCH COMPANY, Dayton, Ohio

Now Delivering

BEAUTIFUL NEW INSTRUMENT KNOBS

for

PANELS and HEAVY DUTY DEVICES

Get Them From Your Favorite PARTS WHOLESALER

J. T. HILL SALES COMPANY

821 WEST OLYMPIC BLVD., LOS ANGELES, CALIF. — VANDIKE 1932

ALSO REPRESENTING

CANNON BALL and BRANDES HEAD SETS

PERFEX WAFER SOCKETS and WAVE CHANGE SWITCHES

UNIVERSAL MICROPHONES and RECORDING APPARATUS

WEBBER OSCILLATORS and TUBE TESTERS

UNITED TRANSMITTING TUBES

P.M.
 1:30—Agnes White's California Kitchen **KFI**
 2:00—Woman's Magazine of the Air **KFI**
 3:00—Feminine Fancies **KHJ**
 3:30—Fletcher Wiley **KNX**

SPORTS

A.M.
 7:30—Fishing Bulletins **KFWB**
 P.M.
 12:30—Major League Baseball **KNX**
 10:00—Fishing and Hunting Talk **KECA**

EDUCATIONAL PROGRAMS

A.M.
 9:00—French Lessons **KECA**
 9:30—The New World **KECA**
 12:00—Visiting America's Little House **KHJ**
 P.M.
 12:30—Contract Bridge Talk **KECA**
 12:45—City Hall Talk **KFOX**
 1:30—University of the Air **KHJ**
 1:45—City Hall Broadcast **KFWB**
 2:00—Dog Talk **KFWB**
 2:15—U.S.C. Period **KFOX**
 2:30—Edgard Leon, Anecdotes of France **KMTR**
 3:00—Alexander Bevani, the Italian Language **KECA**
 3:30—Better Business Talk **KFWB**
 3:45—Liberal Arts Series (off June 24) **KFI**
 5:15—The Story Teller **KECA**
 6:00—Board of Education **KECA**
 6:30—Liberal Arts Series (off June 24) **KECA**
 7:45—Law Applied to Everyday Life **KECA**
 8:15—Crime Laboratory **KFI**
 8:45—Bridge Talk **KECA**
 10:10—Voice of the Globe **KHJ**
 10:30—Bridge Lessons **KFI**

VARIETIES AND MUSICAL COMEDY

A.M.
 7:00—The Honeymooners **KFI**
 11:00—Your Hostess **KHJ**
 P.M.
 12:15—Western Farm and Home **KFI**
 12:15—Chicago Variety **KHJ**
 2:00—Happy-Go-Lucky Hour **KHJ**
 4:00—American Adventures **KFI**
 4:00—From Him to You **KMTR**
 5:30—Music at the Haydn's **KFI**
 6:00—Carnation Contented Program **KFI**
 7:30—One-Night Stands **KHJ**
 8:30—Road to Fame **KHJ**
 9:00—Comedy Stars of Hollywood **KHJ**

HILL-BILLY and COWBOY SONGS

A.M.
 7:00—Covered Wagon Jubilee **KMTR**
 10:00—Oklahoma Range Riders **KMTR**
 P.M.
 1:45—Texas Rangers **KHJ**
 5:00—Stuart Hamblin's Gang **KMTR**
 5:15—Gold Star Rangers **KFWB**
 7:45—King Cowboy **KNX**
 9:00—Beverly Hill-Billies **KFOX**

9:30—Marshall's Mavericks **KFI**
 9:30—KNX Dude Ranch **KNX**

**MUSICAL PROGRAMS
 (INSTRUMENTAL and VOCAL)**

A.M.
 7:30—U. S. Navy Band **KFI**
 8:30—Melody Mixers **KFI**
 9:30—The Waikikians **KFI**
 10:30—Music Guild **KFI**
 P.M.
 12:45—Concert Favorites **KECA**
 1:30—Biltmore Concert Quartette **KECA**
 2:00—Classic Hour **KECA**
 2:30—Symphony and Light Opera Recordings **KNX**
 3:00—Wilbur Hatch's Orchestra **KNX**
 4:00—Haven of Rest **KNX**
 4:00—Fray and Braggiotti **KHJ**
 5:00—Beaux Arts Trio **KFI**
 5:00—Sunset Serenade **KNX**
 5:45—Organ Melodies **KHJ**
 6:45—Twilight Reveries **KECA**
 7:00—Song Silhouettes **KFWB**
 7:30—Voice of Firestone **KFI**
 8:00—Lawrence King and Mary Kirk **KNX**
 8:15—Paul Lamkoff, baritone **KMTR**
 8:30—Memories of the Waltz **KECA**
 8:30—Quartette **KNX**
 9:00—Musical Comedy Moments **KFWB**
 9:15—L.A.C.R.A. Orchestra **KECA**
 10:00—Melody Lane **KMTR**
 10:15—Musical Celebrities **KECA**
 10:30—Russian Eagle Quartette **KNX**

POPULAR MUSIC

A.M.
 10:00—Pair of Pianos **KECA**
 11:00—The Three Flats **KFI**
 11:45—The Sizzlers **KFI**
 P.M.
 12:15—Drury Lane **KNX**
 1:00—Patti Chapin **KHJ**
 1:15—Ted White, tenor **KFI**
 3:30—Cheerio Boys **KFOX**
 3:30—The Songfellows **KECA**
 4:30—Meredith Willson's Orchestra **KECA**
 4:30—The Harmonettes **KHJ**
 5:30—Brick Holton, piano **KHJ**
 6:15—Filipino Orchestra **KMTR**
 6:30—Night Singer **KHJ**
 7:00—Song Silhouettes **KFWB**
 7:30—Three Octaves **KMTR**
 7:30—Sons of the Pioneers **KFWB**
 7:45—Betty Jane Rhodes and Orch. **KFWB**
 8:15—Sons of the Pioneers **KFWB**
 9:00—Richard Himber's Orchestra and Vocalists **KFI**

DANCE ORCHESTRAS

P.M.
 1:30—Pontrell's Orchestra **KNX**
 6:00—Wayne King's Orchestra **KHJ**
 7:15—Abe Lyman's Orchestra **KHJ**

BILL HITT

FACTORY REPRESENTATIVE

**AEROVOX Condensers
 GENERAL Transformers and Chokes**

1341 South Hope Street

RI-6301

Los Angeles

8:00—Ted Fio Rito's Orchestra.....	KHJ
8:30—Cocoanut Grove.....	KFI
8:30—Joy Lee and Orchestra.....	KMTR
9:00—Ben Bernie.....	KHJ
9:15—Horacio Ylto's Orchestra.....	KHJ
9:30—Ben Bernie.....	KHJ
10:15-11:30—Dance Orchestras.....	KHJ
10:30-12:00—Dance Orchestras.....	KFI
10:30-12:00—Dance Orchestras.....	KFWB
10:30-12:00—Dance Orchestras.....	KFOX
10:45-12:00—Dance Orchestras.....	KFI
10:45—Pontrelli's Orchestra.....	KNX

Tuesday, June 18 and 25

DIAL TIPS FOR TODAY

P.M.	
1:00—George Bernard Shaw (June 16).....	KHJ
5:30—Eddie Duchin's Orchestra.....	KFI
6:00—Theater of the Air.....	KFI
6:00—Walter O'Keefe.....	KHJ
6:30—Leith Steven's Harmonies.....	KHJ
7:30—Calling All Cars.....	KHJ
8:00—San Diego Symphony.....	KHJ
8:00—Ben Bernie.....	KFI
8:30—Death Valley Days.....	KFI

DRAMATIC SKETCHES

A.M.	
8:30—Mary Marlin.....	KHJ
10:00—Marie, the Little French Princess.....	KHJ
10:15—Helen Trent..... KHJ	
10:30—Martha Meade Society.....	KFI
10:45—Happy Hollow.....	KHJ
11:30—Ma Perkins.....	KFI
P.M.	
12:00—Betty and Bob.....	KFI
3:30—Just Plain Bill.....	KFI
5:00—Red Trails.....	KFI
5:00—The Right Eye of the Commander.....	KHJ
5:30—Dramas of Youth.....	KNX
7:30—Calling All Cars.....	KHJ
7:45—The Average Family.....	KFWB
8:30—Death Valley Days.....	KFI

COMEDY SKETCHES

A.M.	
11:15—Vic and Sade.....	KFI
P.M.	
4:45—Easy Aces.....	KFI
6:30—KFOX School Kids.....	KFOX
6:30—Lum and Abner.....	KNX
7:00—Eb and Zeb.....	KFOX
7:00—Amos 'n Andy.....	KFI
7:15—Tony and Gus.....	KFI
7:30—The In-Laws.....	KNX
8:15—Frank Watanabe and the Honorable Archie.....	KNX
8:15—Hoecake and Hambone.....	KMTR

ADVENTURE SERIALS

P.M.	
6:00—Jack Armstrong, All-American Boy.....	KNX
6:45—Thrill Hunter.....	KFOX
7:15—Bobby and Betty.....	KFOX
7:30—The Boy Detective.....	KFOX

NEWS, STOCKS, and LOST AND FOUND

A.M.	
6:30—Opening New York Stock Market Quotations.....	KFI
6:45—Morning Headlines.....	KMTR
7:30—Opening N. Y. Stock Markets.....	KHJ
7:30—News and Stock Reports.....	KFAC
9:30—Press Radio News.....	KHJ
9:45—News.....	KNX
9:45—News.....	KFI
9:45—Press Radio News.....	KFOX
9:45—Press Radio News.....	KFWB
10:30—Lost and Found.....	KFAC
10:40—Globe Trotter.....	KFAC
11:30—"Press-Telegram" News.....	KFOX

P.M.	
12:00—Lost and Found.....	KMTR
12:00—News.....	KNX
12:00—News.....	KFAC
12:05—Monitor Views the News.....	KMTR
12:15—News.....	KECA
12:30—News.....	KMTR
1:00—Federal and State Market Reports.....	KFI
1:25—Stock Reports.....	KHJ
3:40—The Globe Trotter.....	KFAC
4:00—News.....	KFOX
6:00—The Globe Trotter.....	KFAC
6:00—News.....	KFOX
6:00—News.....	KFWB
6:00—News.....	KMTR
6:15—News.....	KECA
6:15—News.....	KNX
6:30—Monitor Views the News.....	KMTR
9:00—News.....	KMTR
9:00—News.....	KNX
9:00—News.....	KECA
10:00—Richfield Reporter.....	KFI
10:00—News.....	KHJ
10:00—Press Radio News.....	KFWB
10:00—News.....	KFOX
10:10—Voice of the Globe.....	KHJ
11:00—News Commentary.....	KMTR

COMMENTATORS AND READERS

A.M.	
10:30—Between the Book-Ends.....	KHJ
P.M.	
2:00—The Bookworm.....	KNX
3:00—Rush Hughes.....	KFI
4:00—The Broadcaster.....	KMTR
7:00—Ray de O'Fan.....	KFWB

WOMEN'S PROGRAMS

A.M.	
8:45—Julia Hayes.....	KFI
9:15—Jean Abbey's Shopping Tour.....	KFI

**CENTRALAB CONTROLS AND RESISTORS
QUAM-NICHOLS SPEAKERS
STANCOR EXACT DUPLICATE TRANSFORMERS**

Direct Factory Representativee

CARL A. STONE CO.

209 West 17th Street

Prospect 2818

Los Angeles

10:00—Ann Warner Chats With Her Neighbors **KFI**
 10:30—Mary Holmes **KNX**
 11:00—Marian Manners **KMTH**
 11:00—Fletcher Wiley **KNX**
P.M.
 2:00—Woman's Magazine of the Air **KFI**
 3:00—Feminine Fancies **KHJ**
 3:30—Fletcher Wiley **KNX**

SPORTS

A.M.
 7:30—Fishing Bulletin **KFWB**
P.M.
 12:30—Major League Baseball Game **KNX**
 9:30—Fights **KMTR**

EDUCATIONAL PROGRAMS

A.M.
 7:15—Your Child **KFI**
 9:30—Science of Creative Thinking **KECA**
 11:15—County Medical Association Talk **KECA**
P.M.
 12:30—Science Service Program **KHJ**
 1:45—City Hall Talk **KFWB**
 2:15—U.S.C. Talk **KFOX**
 3:45—Liberal Arts Series (off June 25) **KFI**
 3:45—You and Your Government **KECA**
 3:45—Correct English **KHJ**
 4:15—Looks at Books **KHJ**
 4:30—Fire Department **KNX**
 6:30—Liberal Arts Series (Off June 25) **KECA**
 6:45—Nat'l Advisory Council (off June 25) **KHJ**
 7:00—Interviews **KMTR**
 9:30—The University Explorer **KHJ**
 9:45—Chess Lessons **KECA**
 10:10—Voice of the Globe **KHJ**

VARIETY AND MUSICAL COMEDY

A.M.
 7:00—The Honeymooners **KFI**
 8:30—Words and Music **KECA**
 11:00—Columbia Variety **KHJ**
P.M.
 12:15—Western Farm and Home Hour **KFI**
 1:00—The Merrymakers **KHJ**
 2:00—Happy-Go-Lucky Hour **KHJ**
 3:30—Grace Hayes and Company **KECA**
 5:30—Eddie Duchin's Orchestra **KFI**
 6:00—Theater of the Air **KFI**
 6:00—Walter O'Keefe and Co. **KHJ**

HILL-BILLY and COWBOY SONGS

A.M.
 7:00—Covered Wagon Jubilee **KMTR**
 10:00—Oklahoma Range Riders **KMTH**
 11:00—The Ranch Boys **KFI**
 11:30—Lonely Troubadours **KFAC**
P.M.
 1:45—Texas Rangers **KHJ**
 5:00—Stuart Hamblin's Gang **KMTR**
 5:15—Gold Star Rangers **KFWB**
 7:45—King Cowboy **KNX**

9:00—Beverly Hill-Billies **KFAC**
 9:00—Beverly Hill-Billies **KFOX**
 9:45—KNX Dude Ranch **KNX**

**MUSICAL PROGRAMS
 (INSTRUMENTAL and VOCAL)**

A.M.
 5:30—El Despertador **KFOX**
 8:30—Waikikians **KFI**
 9:15—The Islanders **KHJ**
 10:00—Army Band Concert **KECA**
 10:30—Song Recital **KECA**
 11:30—"Do You Remember?" **KHJ**
 12:00—Poetic Strings **KHJ**
P.M.
 12:30—Concert Favorites **KECA**
 1:15—Pan Americana **KFI**
 1:30—Biltmore Concert Quartet **KECA**
 2:00—Classic Hour **KECA**
 2:30—Recordings of Eminent Pianists **KNX**
 3:00—Wilbur Hatch's Concert Orchestra **KNX**
 4:00—Haven of Rest **KNX**
 4:30—String Time **KECA**
 6:00—Leith Steven's Harmonies **KHJ**
 6:30—Twilight Reveries **KECA**
 6:30—Fray and Braggiotti **KHJ**
 7:00—Inglewood Park Concert **KHJ**
 7:30—Biltmore Concert Orchestra **KECA**
 8:00—San Diego Symphony Orchestra **KHJ**
 8:30—Michael Shanley **KMTR**
 8:00—Viennese Nights **KFWB**
 9:30—Slumbertime **KFWB**
 10:00—Musical Celebrities **KECA**

POPULAR MUSIC

A.M.
 9:00—Mayfair Club Orchestra **KFI**
 9:00—Pete Woolery **KHJ**
 9:30—Pair of Pianos **KFI**
 11:00—Rambles in Rhythm **KHJ**
 11:45—Dreams Come True **KFI**
P.M.
 12:15—Charles W. Hamp **KNX**
 12:45—Betty Barthell **KHJ**
 3:45—Charlie Wellman **KFI**
 4:30—Edith Karen with Orchestra **KHJ**
 5:00—Playtime Lady **KFWB**
 5:30—Hour of Charm **KHJ**
 7:30—Sons of the Pioneers **KFWB**
 9:00—Fan Fare **KFI**
 10:15—Kings Men **KFWB**

DANCE ORCHESTRAS

P.M.
 4:00—Hotel Bismarck Orchestra **KFI**
 7:00—Claude Hopkin's Orchestra **KHJ**
 7:30—Leo Reisman and Phil Duey **KFI**
 8:30—Cocoanut Grove Orchestra **KFWB**
 8:30—Dance Orchestras **KHJ**
 9:00—Del White's Orchestra **KHJ**
 9:30—Mark Hopkin's Hotel Orch. **KFI**
 10:15-12:00—Dance Orchestras **KHJ**
 10:15-12:00—Dance Orchestra **KFI**

S. H. Cohn Sales Co.

2523 So. Hill St., Los Angeles

PRospect 3515

—Representing—

ALPHA WIRE CORP.

BUD RADIO, INC.

VICTOR INSTRUMENT MFG. CO.

RADIO CITY PRODUCTS CO., INC.

AMERICAN RADIO HDWE. CO.

JACKSON ELECTRO CORP.

PHILMORE MFG. CO.

10:30-12:00—Dance Orchestras _____ KFWB
 10:30-12:00—Dance Orchestras _____ KPOX
 10:45—Pontrelli's Orchestra _____ KNX

7:15—Tony and Gus _____ KFI
 7:30—The In-Laws _____ KNX
 8:15—Frank Watanabe and the Honorable
 Archie _____ KNX

Wednesday, June 19 and 26

DIAL TIPS FOR TODAY

P.M.
 4:00—One Man's Family _____ KFI
 4:15—Edwin C. Hill _____ KHJ
 5:00—Our Home on the Range
 (John Charles Thomas) _____ KFI
 6:00—Burns and Allen _____ KHJ
 7:45—Strange As It Seems _____ KHJ
 8:00—Fred Allen, Comedian _____ KFI
 8:30—Ray Paige and KCB _____ KHJ

DRAMATIC SKETCHES

A.M.
 8:30—Mary Marlin _____ KHJ
 10:00—Little French Princess _____ KHJ
 10:15—The Romance of Helen Trent _____ KHJ
 10:45—Happy Hollow _____ KHJ
 11:30—Ma Perkins _____ KFI
 11:30—"Whoa Pincus" _____ KHJ
 12:00—Betty and Bob _____ KFI
 P.M.
 3:15—Stories of the Black Chamber _____ KFI
 3:30—Just Plain Bill _____ KFI
 4:00—One Man's Family _____ KFI
 5:00—Fiction Favorites _____ KNX
 5:30—Og, Son of Fire _____ KNX
 5:45—Little Orphan Annie _____ KNX
 5:45—Moving Stories of Life _____ KHJ
 7:30—House of Glass _____ KFI
 7:45—America of Today _____ KMTR
 7:45—Strange As It Seems _____ KHJ

COMEDY SKETCHES

A.M.
 8:15—The Gumps _____ KHJ
 9:15—Mr. and Mrs. Skit _____ KHJ
 11:15—Vic and Sade _____ KFI
 P.M.
 4:45—Easy Aces _____ KFI
 5:20—Cecil and Sally _____ KPOX
 6:00—Jack Pearl and Co. _____ KHJ
 6:30—Lum and Abner _____ KNX
 6:30—KPOX School Kids _____ KPOX
 7:00—Amos 'n Andy _____ KFI
 7:00—Eb and Zeb _____ KPOX
 7:15—Oscar and Elmer _____ KFWB

ADVENTURE SERIALS

P.M.
 6:00—Jack Armstrong, All American Boy _____ KNX
 6:45—Air Adventures of Jimmie Allen _____ KPOX
 7:15—Professor Perkins, Detective _____ KNX
 7:15—Bobby and Betty _____ KPOX
 7:30—The Boy Detective _____ KPOX

NEWS, STOCKS, and LOST AND FOUND

A.M.
 6:30—Opening New York Stock Market
 Quotations _____ KFI
 6:45—Morning Headlines _____ KMTR
 7:30—News and Stock Reports _____ KPAC
 7:30—Opening N. Y. Stocks _____ KHJ
 9:30—Press Radio News _____ KHJ
 9:45—News _____ KNX
 9:45—News _____ KFI
 9:45—Press Radio News _____ KPOX
 9:45—Press Radio News _____ KFWB
 10:30—Lost and Found _____ KFAC
 10:40—Globe Trotter _____ KFAC
 11:30—"Press-Telegram" News _____ KPOX

P.M.
 12:00—Lost and Found _____ KMTR
 12:00—News _____ KNX
 12:00—News _____ KPAC
 12:05—Monitor Views the News _____ KMTR
 12:15—News _____ KECA
 12:30—News _____ KMTR
 1:00—Federal and State Market Reports _____ KFI
 1:25—Stock Reports _____ KHJ
 3:40—The Globe Trotter _____ KFAC
 4:00—News _____ KPOX
 6:00—The Globe Trotter _____ KFAC
 6:00—News _____ KPOX
 6:00—News _____ KFWB
 6:00—News _____ KMTR
 6:15—News _____ KECA
 6:15—News _____ KNX
 6:30—Monitor Views the News _____ KMTR
 9:00—News _____ KMTR
 9:00—News _____ KNX
 9:00—News _____ KECA
 10:00—Richfield Reporter _____ KFI
 10:00—News _____ KHJ
 10:00—Press Radio News _____ KFWB
 10:00—News _____ KPOX
 10:10—Voice of the Globe _____ KHJ
 11:00—News Commentary _____ KMTR

For Service Satisfaction, use the new

ECONOMY

Line of

DRY ELECTROLYTICS

Manufactured by

Polymet Mfg. Co.

829 EAST 134TH STREET
 NEW YORK

Represented by

Marshank Sales Co.

Marshank Sales Co.

—Also Representing—

I. R. C. RESISTORS

NAALD PRODUCTS

JENSEN SPEAKERS

PIONEER GENEMOTORS

CORNISH WIRE

2022 W. 11th ST., LOS ANGELES
 Fltzroy 9913

COMMENTATORS AND READERS

A.M.	
7:15—Tony Wons	KFI
10:30—Between The Bookends	KHJ
P.M.	
2:00—The Bookworm	KNX
3:00—Rush Hughes	KFI
3:00—Hollywood Lowdown	KMTR
4:15—Edwin C. Hill	KHJ
5:45—"Once Upon a Time"	KECA
7:00—Edwin Schallerts Interview	KMTR
8:15—Editorial Page of the Air	KFWB

WOMEN'S PROGRAMS

A.M.	
8:45—Magic Recipes	KFI
9:30—California Fed. Women's Clubs	KECA
9:30—Round the World Cooking School	KHJ
9:45—Betty Crocker	KHJ
10:00—Ann Warner	KFI
10:00—Prudence Penny, Home Economics	KFWB
10:30—Mary Holmes, Home Management	KNX
11:00—Fletcher Wiley	KNX
P.M.	
1:30—Agnes White's California Kitchen	KFI
2:00—Woman's Magazine of the Air	KFI
3:30—Feminine Fancies	KHJ

SPORTS

P.M.	
12:30—Major League Baseball Game	KNX
9:15—Auto Races	KFWB

EDUCATIONAL PROGRAMS

A.M.	
11:00—English Lessons	KFI
11:15—Chinese Lessons	KECA
11:30—Business Trends (U.S.C.)	KNX
P.M.	
12:30—Contract Bridge	KECA
12:45—L. A. City Hall	KFOX
1:30—University of the Air	KHJ
2:30—Edgard Leon	KMTR
3:45—Liberal Arts Series (off June 26)	KFI
4:30—Better Business Talk	KECA
5:45—U. S. and World Affairs	KFI
6:00—National Park Talks	KECA
6:30—Liberal Arts Series (off June 26)	KECA
8:45—Bridge Lessons	KECA
10:10—Voice of the Globe	KHJ
10:30—Bridge Lessons	KFI

VARIETY PROGRAMS

A.M.	
8:00—L. A. Breakfast Club	KFWB
8:30—Words and Music	KFI
11:00—Jack Brooks with Orchestra	KHJ
11:00—Hollywood Varieties	KECA
P.M.	
12:15—Western Farm Hour	KFI
2:00—Happy-Go-Lucky Hour	KHJ
4:00—From Him to You	KMTR
5:00—"Romance"	KHJ
5:30—Burns and Allen	KHJ
6:00—Jack Pearl, Freddie Rich's Orch.	KHJ
6:00—Hits and Bits	KFI

8:00—Town Hall with Fred Allen	KFI
9:00—Comedy Stars of Hollywood	KHJ
9:30—KMTR on Parade	KMTR

COWBOY AND HILL-BILLY SONGS

A.M.	
7:00—Covered Wagon Jubilee	KMTR
10:00—Oklahoma Range Riders	KMTR
1:45—Texas Rangers	KHJ
P.M.	
5:00—Stuart Hamblen's Gang	KMTR
7:45—King Cowboy	KNX
9:00—Beverly Hill-Billies	KFOX
9:45—Dude Ranch	KNX

MUSICAL PROGRAMS
(Instrumental and Vocal)

A.M.	
7:30—U. S. Army Band	KFI
10:00—Beaux Arts Trio	KECA
10:30—Golden Melodies	KFI
12:00—La Forge Berumen Musicale	KHJ
P.M.	
1:30—Concert Recordings	KFWB
2:00—Classic Hour	KECA
2:30—Los Caballeros	KFOX
2:45—Dr. Leibling, pianist	KMTR
3:00—Wilbur Hatch's Concert Orch.	KNX
5:00—Our Home on the Range (John Charles Thomas)	KFI
5:30—Marie de Veaux	KHJ
6:15—Filipino Orchestra	KMTR
6:45—Twilight Reverie	KECA
7:00—Opera Hour	KECA
7:30—Boleros	KHJ
8:00—Magic of Music	KNX
8:15—Paul Lamkoff	KFOX
8:30—Ray, Paige's Orch. with KCB	KHJ
8:30—Tamara Shavrova & Orch.	KMTR
8:00—Concert Singers	KFI
9:30—Wandering Minstrel	KFI
10:30—Melody Lane	KMTR
10:30—Russian Eagle String Quartette	KNX

POPULAR MUSIC

A.M.	
7:00—The Honeymooners	KFI
8:15—Merry Macs	KFI
9:30—The Waikikians	KFI
10:30—Frankie Patten	KECA
11:45—Dreams Come True	KFI
P.M.	
12:15—Popular Ballads	KFOX
12:30—Loretta Lee	KHJ
1:00—The Bluebirds	KHJ
2:30—Modern Music	KNX
3:30—Cheerio Boys	KFOX
5:00—Mark Warnow	KHJ
6:30—Melody Masterpieces	KHJ
7:30—This and That	KFWB
7:45—Cheerio Boys	KFOX
8:15—Judy Starr	KHJ
9:00—King's Men	KFWB

DANCE ORCHESTRAS

A.M.	
9:00—Hotel Statler Orchestra	KFI

Representing

DAYRAD
TEST EQUIPMENT
LENZ
WIRE and CABLE

CHAMPION
TUBES
WRIGHT-DeCOSTER
SPEAKER

GOAT
TUBE SHIELDS
CINCH
SOCKETS

FRANK A. EMMET CO.

1250 S. NEW HAMPSHIRE, LOS ANGELES

FITZROY 9151

P.M.	
1:30—Pontrelli's Paris Inn Orch.	KNX
4:30—Ted Fio Rito's Orchestra	KHJ
6:30—Ray Noble's Orchestra	KFI
7:00—Claude Hopkins	KHJ
8:30—Cocoanut Grove Orchestra	KFWB
8:30—Ben Bernie's Orchestra	KHJ
9:00-12:00—Dance Orchestra	KHJ
9:30—Al Lyon's Orchestra	
10:30-12—Dance Orchestras	KFWB
10:45-12:00—Dance Orchestra	KFI
10:45—Pontrelli's Paris Inn Orch.	KNX
11:30—Freddie Carter's Orchestra	KFOX

8:15—Hoecake and Hambone	KMTR
8:15—Frank Watanabe and the Honorable Archie	KNX

ADVENTURE SERIALS

P.M.	
6:00—Jack Armstrong, All-American Boy	KNX
6:45—The Thrill Hunter	KFOX
7:15—Bob and Betty	KFOX
7:30—The Boy Detective	KFOX

NEWS, STOCKS, and LOST AND FOUND

A.M.	
6:30—Opening New York Stock Market	
Quotations	KFI
6:45—Morning Headlines	KMTR
7:30—Opening N. Y. Stocks	KHJ
7:30—News and Stock Reports	KFAC
9:30—Press Radio News	KHJ
9:45—News	KNX
9:45—News	KFI
9:45—Press Radio News	KFOX
9:45—Press Radio News	KFWB
10:30—Lost and Found	KFAC
10:40—Globe Trotter	KFAC
11:30—"Press-Telegram" News	KFOX

Thursday, June 20 and 27

DIAL TIPS FOR TODAY

P.M.	
12:30—"Greetings From Old Kentucky"	KHJ
4:00—Kate Smith's Hour	KHJ
4:00—Rudy Vallee's Variety Hour	KFI
5:00—Capt. Henry's Showboat	KFI
5:30—Waring's Pennsylvanians	KHJ
6:00—Paul Whiteman's Hour	KFI
7:30—Walter O'Keefe and Orchestra	KHJ
8:00—Floyd Gibbons	KFI
8:15—Standard Symphony Hour	KFI
9:00—KHJ Magazine	KHJ
9:30—In the Crime Light	KMTR

DRAMATIC SKETCHES

A.M.	
8:30—Mary Marlin	KHJ
10:00—Marie, The Little French Princess	KHJ
10:15—Romance of Helen Trent	KHJ
10:30—Martha Meade Society	KFI
10:45—Happy Hollow	KHJ
11:30—Ma Perkins	KFI
12 noon—Betty and Bob	KFI
P.M.	
1:45—Moving Stories of Life	KHJ
3:30—Just Plain Bill	KFI
5:00—Fiction Favorites	KNX
5:45—Little Orphan Annie	KNX
6:15—The Drunkard	KMTR
7:30—Winning the West	KFI
8:30—Tapestries of Life	KHJ
8:45—The Shining Adventure	KNX
9:30—In the Crimelight	KMTR
9:30—The People of Millersburg	KFI

COMEDY SKETCHES

A.M.	
8:15—The Gumps	KHJ
11:15—Vic and Sade	KFI
P.M.	
5:20—Cecil and Sally	KFOX
6:30—KFOX School Kids	KFOX
6:30—Lum and Abner	KNX
7:00—Amos 'n Andy	KFI
7:00—Eb and Zeb	KFOX
7:15—Tony and Gus	KFI
7:30—The In-Laws	KNX

P.M.	
12:00—Lost and Found	KMTR
12:00—News	KNX
12:00—News	KFAC
12:05—The Monitor Views the News	KMTR
12:15—News	KECA
12:30—News	KMTR
1:00—Federal and State Market Reports	KFI
1:25—Stock Reports	KHJ
3:40—The Globe Trotter	KFAC
4:00—News	KFOX
6:00—The Globe Trotter	KFAC
6:00—News	KFOX
6:00—News	KFWB
6:00—News	KMTR
6:15—News	KECA
6:15—News	KNX
6:30—The Monitor Views the News	KMTR
9:00—News	KMTR
9:00—News	KECA
9:00—News	KNX
10:00—Richfield Reporter	KFI
10:00—News	KHJ
10:00—Press Radio News	KFWB
10:00—News	KFOX
10:10—Voice of the Globe	KHJ
11:15—News Commentary	KMTR

COMMENTATORS AND READERS

A.M.	
10:30—Between the Bookends	KHJ
10:45—The Broadcaster	KMTR
P.M.	
2:00—The Bookworm	KNX
3:00—Rush Hughes	KFI
3:50—Gertrude Ross on Philharmonic Orchestra	KHJ
4:00—Hermes, the Story Teller	KECA
4:15—Western Angler	KMTR
7:45—Outdoor Reporter	KFWB

E. P. DEMAREST

Representing

HYGRADE SYLVANIA CORP. NATIONAL CO.
 PRECISION APPARATUS CORP. ELECTRAD, INC.
 ARTHUR H. LYNCH

1127 VENICE BLVD.

FEDERAL 2115

LOS ANGELES

8:00—Floyd Gibbons _____ KFI
 8:00—Current News Commentator..... KFOX
 8:15—Studio Whispers _____ KFWB

WOMEN'S PROGRAMS

A.M.
 8:45—Julia Hayes _____ KFI
 9:00—Happy Kitchen _____ KFAC
 9:30—Hazel Blair Dodd..... KFAC
 10:00—Ann Warner _____ KFI
 10:30—Mary Holmes, home economics..... KNX
 11:00—Fletcher Wiley _____ KNX

P.M.
 2:00—Women's Magazine of the Air..... KFI
 3:00—Feminine Fancies _____ KHJ
 3:30—Fletcher Wiley _____ KNX

EDUCATIONAL

A.M.
 7:15—House Detective _____ KFI
 11:30—Better Business Bureau..... KNX
 12:15—Western Farm Hour _____ KFI
 12:30—U. C. Educational Program..... KHJ

P.M.
 1:00—Parent-Teachers Assn. Talk..... KECA
 1:30—University of the Air _____ KHJ
 1:45—City Hall Broadcast..... KFWB
 3:00—Louise Johnson _____ KNX
 3:45—Liberal Arts Series (off June 27)..... KFI
 5:00—Tuning in with our children..... KECA
 5:15—Let's Go to Europe..... KILJ
 6:30—Liberal Arts Series (off June 27)..... KECA
 10:10—Voice of the Globe _____ KHJ

VARIETY PROGRAMS

A.M.
 8:30—Words and Music _____ KECA
 11:00—Cleveland Entertains _____ KHJ

P.M.
 4:00—Kate Smith's Hour _____ KHJ
 4:00—Rudy Vallee's Variety Hour..... KFI
 5:00—Capt. Henry's Showboat _____ KFI
 6:00—Paul Whiteman's Hour _____ KFI
 7:30—Walter O'Keefe and Caravan..... KHJ
 9:00—Mobil Magazine _____ KHJ

COWBOY AND HILL-BILLY SONGS

A.M.
 7:00—Covered Wagon Jubilee..... KMTR
 10:00—Oklahoma Range Riders..... KMTR
 10:00—Marshall's Mavericks _____ KECA

P.M.
 5:00—Stuart Hamblen's Gang _____ KMTR
 5:15—Gold Star Rangers..... KFWB
 7:45—King Cowboy _____ KNX
 9:00—Beverly Hill-Billies _____ KFOX
 9:30—KNX Dude Ranch _____ KNX

MUSICAL PROGRAMS

(Instrumental and Vocal)

A.M.
 9:00—The Instrumentalists _____ KHJ
 9:00—Rex Battle Concert Ensemble..... KFI
 9:15—The Islanders _____ KHJ

P.M.
 12:15—Salvation Army Band..... KHJ
 12:30—Concert Favorites _____ KECA
 1:00—Howell and Wright, two pianos..... KHJ
 1:30—Biltmore Concert Orchestra..... KECA
 1:30—Concert Recordings _____ KFWB
 2:00—Classic Hour _____ KECA
 2:30—Symphonies and Opera _____ KNX
 3:00—Spanish and Mexican Music..... KECA
 6:45—Calliente Orchestra _____ KMTR
 7:15—Paul Lamkoff _____ KMTR
 7:30—Light Opera _____ KECA
 8:00—San Diego Symphony..... KHJ
 8:15—Standard Symphony _____ KFI
 9:15—Chamber Music _____ KECA
 9:30—Musical Moments _____ KHJ
 10:00—Musical Celebrities _____ KECA
 10:30—Russian Eagle Quartette..... KNX

POPULAR MUSIC

A.M.
 7:00—The Honeymooners _____ KFI
 8:15—Merry Macs _____ KFI
 9:30—Cliff Nazarro _____ KFI
 9:45—Smilin' Ed McConnell..... KHJ
 9:45—Edna Fischer, pianist _____ KECA
 11:00—Piano Duo _____ KFI
 11:30—Connie Gates and Jimmie Brierly..... KHJ
 11:45—Dreams Come True _____ KFI

P.M.
 12:15—Charles Hamp _____ KNX
 12:45—Rambles in Rhythm..... KILJ
 1:15—Vera Van _____ KHJ
 1:15—Helen Guest _____ KFI
 1:30—Kay Foster, songs _____ KFI
 3:30—Cheerio Boys _____ KFOX
 5:00—Playtime Lady _____ KFWB
 5:00—Bob Allen, pianist _____ KHJ
 6:30—Horace Heidt's Brigadiers..... KHJ
 8:00—Ray Herbeck's Orchestra..... KHJ
 8:00—Joe Bishop and Orchestra..... KNX
 9:15—Esquire Quartet _____ KNX
 9:15—Chiffon Jazz _____ KFI
 9:30—America Sings _____ KECA
 9:30—Slumber Time _____ KFWB
 10:15—King's Men _____ KFWB
 10:15—Bill Roberts, songs..... KFI

DANCE ORCHESTRAS

P.M.
 1:30—Pontrelli's Orchestra _____ KNX
 4:45—Freddie Rich's Orchestra..... KHJ
 5:30—Waring's Pennsylvanians..... KHJ
 6:30—Horace Heidt's Orchestra..... KHJ
 7:00—Frank Daily and Orchestra..... KHJ
 8:00—Denny Thompson's Orchestra..... KHJ
 8:00—Frankie Master's Orchestra..... KHJ
 8:30—Cocoanut Grove Orchestra..... KFWB
 9:30—Ben Bernie's Orchestra..... KHJ
 9:30-12:00—Dance Orchestras..... KHJ
 10:30-12:00—Dance Orchestras..... KFI
 10:30-12:00—Dance Orchestras..... KFOX
 10:30-12:00—Dance Orchestras..... KFWB
 10:45—Dance Orchestra _____ KNX

**Sherwood Ignition Filters
 Cardwell Condensers
 Carter Genemotors**

**Rola Speakers
 Ward Antennas
 Sprague Condensers**

Represented by

CONSOLIDATED SALES CO.

243 West Adams, Los Angeles

PRospect 5516

Friday, June 21 and 28**DIAL TIPS FOR TODAY**

P.M.	
4:00—Irene Rich	KFI
4:30—True Stories	KHJ
5:00—Hollywood Hotel	KHJ
5:00—Beatrice Lillie, Comedian	KFI
5:30—Phil Baker and Company	KFI
6:00—The First Nighter	KFI
6:30—Stoopnagle and Budd	KHJ
7:30—The Average Family	KFWB

DRAMATIC SKETCHES

A.M.	
8:30—Mary Marlin	KHJ
10:00—Marie, the Little French Princess	KHJ
10:15—The Romance of Helen Trent	KHJ
10:45—Happy Hollow	KHJ
11:30—Ma Perkins	KFI
12 noon—Betty and Bob	KFI
P.M.	
1:45—Mickey of the Circus	KHJ
3:15—Stories of the Black Chamber	KFI
3:30—Just Plain Bill	KFI
4:00—Irene Rich's Drama	KFI
4:30—True Stories	KHJ
5:30—Og, Son of Fire	KNX
5:45—Little Orphan Annie	KNX
6:00—First Nighter	KFI
7:30—Average Family	KFWB
7:45—Heartbeats of the City	KFI
7:45—Strange As It Seems	KHJ
9:00—Witch's Tales	KHJ
9:30—Night Editor (off June 28)	KFI

COMEDY SKETCHES

A.M.	
8:15—The Gumps	KHJ
9:15—Mr. and Mrs. Skit	KHJ
11:15—Vic and Sade	KFI

P.M.

5:00—Beatrice Lillie	KFI
5:20—Cecil and Sally	KFOX
6:30—KFOX School Kids	KFOX
6:30—Lum and Abner	KNX
7:00—Amos 'n Andy	KFI
7:00—Eb and Zeb	KFOX
7:15—Oscar and Elmer	KFWB
7:15—Tony and Gus	KFI
7:30—The In-Laws	KNX
8:15—Frank Watanabe and the Honorable Archie	KNX

ADVENTURE SERIALS**P.M.**

6:00—Secret Service Club	KHJ
6:00—All-American Boy	KNX
6:45—Air Adventures of Jimmie Allen	KFWB and KFOX
7:15—Bob and Betty	KFOX
7:15—Professor Perkins, Detective	KNX
7:30—The Boy Detective	KFOX

NEWS, STOCKS, and LOST AND FOUND

6:30—Opening New York Stock Market Quotations	KFI
6:45—Morning Headlines	KMTR
7:30—News and Stock Reports	KFAC
7:30—Opening N. Y. Stocks	KHJ
9:30—Press Radio News	KHJ
9:45—News	KNX
9:45—News	KFI
9:45—Press Radio News	KFOX
9:45—Press Radio News	KFWB
10:00—Press Radio News	KHJ
10:30—Lost and Found	KFAC
10:40—Globe Trotter	KFAC
11:30—"Press-Telegram" News	KFOX
P.M.	
12:00—Lost and Found	KMTR
12:00—News	KNX
12:00—News	KFAC

**PREFERRED
POSITIONS
FOR MEN
AND WOMEN**



**DAY and NIGHT
STUDENTS**
provided with
typewriters
for home use,
FREE

Send for this free booklet—
"PLANNING YOUR FUTURE"

It tells about our intensive, individual coaching plan . . . how you may qualify as a Private Secretary, quickly and at low cost . . . how we first place you on the payroll, then manage and direct your career until you reach a position in keeping with your personality, talent, and ability.

Enrollment is limited to men and women who have a high school education or its equivalent. We specialize in preparing men and women for the better-paying stenographic and secretarial positions. Many splendid opportunities are made available to men and women of executive caliber. MUtual 8897.

METROPOLITAN BUSINESS COLLEGE

1010 Metropolitan Building

Fifth Street at Broadway

Home of the Super-Secretary

12:15—News	KECA
12:30—News	KMTR
1:00—Federal and State Market Reports	KFI
1:25—Stock Reports	KHJ
3:40—The Globe Trotter	KFAC
4:00—News	KFOX
6:00—The Globe Trotter	KFAC
6:00—News	KFOX
6:00—News	KFWB
6:00—News	KMTR
6:15—News	KECA
6:15—News	KNX
9:00—News	KMTR
9:00—News	KECA
9:00—News	KNX
10:00—Richfield Reporter	KFI
10:00—News	KHJ
10:00—Press Radio News	KFWB
10:00—News	KFOX
10:10—Voice of the Globe	KHJ
11:15—News Commentary	KMTR
11:45—Trans-Pacific News	KNX

COMMENTATORS AND READERS

A.M.	
10:30—Between the Bookends	KHJ
10:45—Something to Talk About	KMTR
P.M.	
2:00—The Bookworm	KNX
3:00—Rush Hughes	KFI
3:30—Kaltenborn Edits the News	KHJ
5:45—"Once Upon a Time"	KECA
8:15—Editorial Page of the Air	KFWB

WOMEN'S PROGRAMS

A.M.	
9:30—Round the World Cooking School	KHJ
10:00—Ann Warner	KFI
10:00—Prudence Penny	KFWB
10:30—Frances Lee Barton's Kitchen Party	KFI
P.M.	
1:30—Agnes White's California Kitchen	KFI
2:00—Women's Magazine of the Air	KFI
3:30—Feminine Fancies	KHJ

SPORTS EVENTS

A.M.	
7:30—Fishing Bulletin	KFWB
P.M.	
12:30—Major League Baseball Game	KNX
7:15—Sports Talk	KECA
9:45—Fights from Hollywood Stadium	KNX

EDUCATIONAL PROGRAMS

A.M.	
9:00—Spanish Lessons	KECA
9:15—Better Business	KFI
11:45—KFI-KECA Listener's Forum	KFI
P.M.	
12:30—Culbertson Bridge Talks	KECA
1:30—University of the Air	KHJ
3:30—Art in America	KECA
3:45—Liberal Arts Series (off June 28)	KFI
6:30—Liberal Arts Series (off June 28)	KECA
8:45—Bridge Lessons	KECA
10:10—Voice of the Globe	KHJ
10:30—Bridge Lessons	KFI

VARIETY PROGRAMS

A.M.	
8:30—Words and Music	KFI
11:30—The Grab Bag	KHJ
P.M.	
4:00—From Him to You	KMTR
5:00—Beatrice Lillie and Co.	KFI
5:30—Phil Baker and Co.	KFI
6:00—First Nighter	KFI
6:30—Circus Night	KFI
5:00—Hollywood Hotel	KHJ
6:30—Stoopnagle & Budd	KHJ
8:00—For Men Only	KMTR
9:30—Extravaganza	KMTR

COWBOY and HILL-BILLY SONGS

A.M.	
7:00—Covered Wagon Jubilee	KMTR
10:00—Oklahoma Range Riders	KMTR
10:30—Chaparral Club	KECA

P.M.	
5:00—Stuart Hamblen's Gang	KMTR
5:15—Gold Star Rangers	KFWB
7:45—King Cowboy	KNX
9:00—Beverly Hill-Billies	KFOX

MUSICAL PROGRAMS
(Instrumental and Vocal)

A.M.	
7:00—U. S. Marine Band	KFI
11:15—The Instrumentalists	KHJ
11:30—Eddie Dunstedter, organ	KHJ
P.M.	
12:30—U. S. Army Band	KHJ
12:45—Concert Favorites	KECA
1:30—Concert Recordings	KFWB
1:30—Biltmore Concert Orchestra	KECA
2:00—Classic Hour	KECA
2:30—Eminent Pianists	KNX
4:00—Beaux Arts Trio	KECA
4:00—L. Mayar	KHJ
6:00—The Islanders	KHJ
6:45—Markoff Recital	KMTR
7:00—Marie de Veaux	KHJ
7:30—Male Quartet	KFI
8:00—Robert Hurd, songs	KECA
8:15—Paul Lamkoff	KFOX
8:15—Concert	KFI
8:15—Concert Orch. and Vocalists	KMTR
8:30—Michael Shanely	KMTR
9:15—Chamber Music	KECA
10:00—Musical Celebrities	KECA

POPULAR MUSIC

A.M.	
9:15—Carefree Capers	KNX
9:30—Helen Guest	KFI
10:00—Pair of Pianos	KECA
10:45—Tonic Tunes	KNX
11:00—Pete Woolery	KHJ
P.M.	
12:00—Among Our Souvenirs	KHJ
3:30—Cheerio Boys	KFOX
4:30—Musical Program	KNX
4:45—Charlie Wellman	KFI
8:00—Gene Austin	KMTR
9:30—Musical Headlines	KNX
10:00—Melody Lane	KMTR
10:15—King's Men	KFWB
11:00—Gene Austin	KMTR

DANCE ORCHESTRAS

P.M.	
1:30—Pontrelli's Orchestra	KNX
7:15—Charles Dornberger's Orchestra	KHJ
7:30—Luigi Romanelli's Orchestra	KHJ
8:00—Del White's Orchestra	KHJ
8:30—Cocoanut Grove Orchestra	KFWB
9:00—Dance Orchestra	KFI
9:30—Ben Bernie's Orchestra	KHJ
10:10-12:00—Dance Orchestras	KHJ
10:15—Jimmie Grier's Orchestra	KFI
10:30-12:00—Dance Orchestras	KFOX
10:30-12:00—Dance Orchestras	KFWB
11:00—Cocoanut Grove Orchestra	KFI
11:30—Pontrelli's Orchestra	KNX

THE 171-FOOT TOWER AT W6AM

(Continued from page 11)

support the various antennas described. It is a quarter of a mile from the extreme of one antenna to the extreme of some of the others. Any antenna not valuable for some specific purpose is taken down to make room for others. The apparatus and antenna undergo a change almost every Saturday, as on that day we try to switch things around to get some different effect or different results. The change is tried over the week-end.

TRADE NEWS

Philco certainly imbued their sales organization with tremendous enthusiasm for their products and policy. The sixteen men who took the Philco trip to Bermuda came back in high spirits and all of them predict that this will be the biggest year in Philco history.

The same spirit prevailed at the Philco dealers' meeting held at the Jonathan Club, Tuesday evening, June 11. The main dining room holds 400 but over 425 dealers came to the meeting.

Mr. Phil Gough, president of Listen-walter & Gough, the southern California distributors for Philco radio, was chairman of the meeting. After welcoming everybody and wishing them a happy and prosperous year he introduced Mr. Cliff Bettinger, coast sales representative of the Philco Company.

Mr. Bettinger started his talk by referring to the first time that he met Mr. Gough. He said the Pacific Coast was in last position in Philco sales but due to the uncanny sales ability of Mr. Gough and the unlimited enthusiasm of his organization the Pacific Coast Division now leads all other divisions in the United States.

Next to be introduced was Mr. Harold Dishon, Los Angeles sales representative, who introduced the new line of models and illustrated his talk with moving pictures.

Mr. Stephen O'Donnell, the Philco News Commentator, then gave a talk on the "Institute of Audible Arts" and Philco's plan to make radio more enjoyable and valuable to the public.

Mr. Harry B. Brown, Retail Merchandising Manager, who came out from Philadelphia especially for this meeting, was the principal speaker of the evening. A few high lights of his speech were: "The next ten months will be the biggest in Philco history and remember that Philco has consistently predicted, for the last five years, the trend of radio." "Inflation is here and when people realize it they will start a big buying campaign which means that the demand will exceed the supply." "Philco has never used the public as an experimental laboratory and will not do so now. We will not use

the new metal tube until it is time tested."

The banquet was just the opening gun of the Philco sales convention. It continued for three more days, Wednesday, Thursday and Friday, on the 11th floor of the Bendix Building at 12th and Maple Strts., Los Angeles.

The Bendix display of 23 of the new Philco models was under the able supervision of Mr. Lou Gruner, assisted by Mr. Vic Noble and the sales force. The rooms were attractively decorated and the models were placed to the best advantage. Cold lunch and beer was available to all visitors.

* * *

Just one year ago Mr. C. W. Brady started the Home Products Co. in Glendale. He thought after fifteen years in the electrical and radio business, that he finally knew what the public wanted both in merchandise, credit terms and service. He was correct. The company started to do a fine business from the first month. Frigidaire, Easy Washers and other electrical appliances started rolling from the store into the homes of the people of Glendale, South Pasadena and Burbank.

The sales became so great in South Pasadena that Mr. Brady was forced to open a store at 1106 Fair Oaks Ave. to take care of his customers. This branch has been most successful especially in the sale of Frigidaires.

This month a beautiful new establishment was opened at 130 E. San Fernando Rd. in Burbank. Nearly three hundred people entered the store on the opening day and many new contracts were signed.

The Home Products Co. has a policy of liberal credit terms and takes advantage of the National Housing Act for the benefit of their customers. They knew that people wanted and needed new electrical appliances but could not buy them due to stringent credit terms but that now with the small payments stretched over a period of years Frigidaires, washing machines, electric stoves and heaters are within the reach of all.

TRADE NOTES

The radio business is coming back into its own. It is luring the "old timers" of radio from other industries they have been in during the last two or three years, back to their first love—that fast moving "baby industry," RADIO. In making my rounds last week whom do I see in the busy establishment of Watson & Wilson, but E. B. Gunther? E. B. started in the radio business about twelve years ago with W. D. (Scotty) Scott. Then for years he was with Walter Fagan at the Pacific Wholesale Electric Co., then with the old Ungar & Watson Co. For the last couple of years he has worked in the aeroplane industry. He told me that he was happy to be back in the radio game for it is the most interesting business that he knows.

The new policy of both the Allen D. Cardwell Co. and the Sprague Products Co. of appointing key distributors in each of the major distributing centers has made it necessary for Mr. Ray Noel, of the Consolidated Sales Co., factory representatives for these companies, to make a trip through central and northern California. Mr. Noel is especially interested in introducing the new Cardwell Trim-Air four purpose midget condenser that is designed for use in ultra high frequency communication.

Mr. W. Bert Knight, of 115 W. Venice Blvd., Los Angeles, just returned this week from a trip to the east and middle west. Mr. Knight visited his numerous factories and made plans for sales campaigns in California during the coming season. We'll hear more from Bert later on.

Mr. Bob Hulbert, manager of the Royale Radio Mfg. Co., of 1417 W. Pico St., Los Angeles, reports that he is now offering a new 5-tube superheterodyne set housed in a beautiful hand-rubbed cabinet. The sets are in production so orders can be filled promptly.

We wish to apologize to Mr. S. H. Cohn, of 2523 S. Hill St., for crediting him with a line that he did not represent and leaving out a line that he did

represent. He does not represent the Fensholt but does represent the Victor Instrument Mfg. Co.

Walter Hussong, that good-looking, big blond dispenser of rare liquors, said to us not long ago when we were in Ensenada: "Do I know Arizona? Sure, I was a 'Freshman' at the University of Arizona for three years. I had a lot of fun, that was the reason why I was a 'Freshman' for three years."

Which reminds me of a crack that Herb Bell made the other day. "No expensive, big models for me. Every time I thought I was a big shot I got into trouble. I am a midget manufacturer and I am going to stay a midget manufacturer. I don't make much money but I have a lot of fun. Do you see that nice little auto set? Well, I am on my third thousand. Not bad, eh? Not bad." The Packard Bell plant at 1320 S. Grand Ave., Los Angeles, is certainly a beehive of activity.

Perry Demarest, of 1127 Venice Blvd., Los Angeles, returned this last week from a trip to New York and way points. He spent several weeks at the Sylvania plant discovering the ifs and ands of the tube situation. We hope that Perry will open up and tell us what it is all about.

Mr. R. M. Hadley, general manager of the Metal Products Co., of 709 E. 61st St., Los Angeles, reports that he has had to put in new equipment to take care of the orders pouring in for the MPC transformers. He believes that we will have the largest business this coming fall that the radio industry has ever experienced.

The Radio Boosters held their regular meeting Monday, June 3rd. During July and August they will hold only one meeting a month instead of two as is the usual custom.

Mr. Al Sexton is now in business for himself. He is job lotting, and reports that he is well satisfied with the results. If anybody wants to get in touch with Al, his telephone number is PProspect 1965.

New 1936 PHILCO

A MUSICAL INSTRUMENT OF QUALITY



PHILCO 116X—HIGH FIDELITY
American and Foreign

Reaching New Heights of
Tone . . . Power
Foreign Reception

THE CABINETS OF
EXQUISITE CHARM

THE FINEST Philcos ever built! The most exciting reception in all radio history; Your favorite American Stations — plus Europe, Asia, Australia, South America — all the world — more perfectly than you ever dreamed! Startling realism of tone! All yours with these new musical instruments of quality.

Exactly the Philco you want at the price you want to pay! Forty-six models from Baby Grands to magnificent Inclined Sounding Board models — priced from \$22.90 to \$625.

Come in Today—See and Hear the Marvelous New Philcol

Liberal Trade-in Allowance—Easy Terms

FRED S. DEAN CO.

Formerly

PREST & DEAN

400 AMERICAN AVE. - PHONE 652-83 - LONG BEACH, CALIF.