

# RADIO DOINGS

RED BOOK OF RADIO

10¢  
WEEKLY

The Radio Authority  
of  
Pacific Coast

2301 W. 29th Place  
1-30-29  
Edwin A. Welsh



Louise Howatt, KMTR—The Happiness Girl

NSE

Vol. XII  
No. 16

APRIL  
15-21, 1928



The New  
**CROSLLEY JEWELBOX**

WITH TUBES  
 \$131.00

**\$104<sup>50</sup>**

With Tubes and Speaker  
 \$147.50

WITHOUT TUBES

Put the Jewelbox to any test—try it with any other set—learn what radio reception can be! Note how easy it is to break through any surrounding wall of local stations and bring in distant programs quickly, clearly and with full volume.

Be sure to test the Jewelbox with the new De Luxe Musicone that you may fully realize how far radio has progressed.

Your Nearest Crosley Dealer Will  
 Gladly Arrange a Demonstration

*Exclusive California Distributors*

**KIERULFF & RAVENSCROFT**  
 RADIO EQUIPMENT



1630-32  
 S. Los Angeles St.  
 LOS ANGELES

121-131  
 Ninth Street  
 SAN FRANCISCO

*AC Operation, Quality and Moderate Price Are  
All Embodied in the*

# **CROSLEY**

## **JEWELBOX RECEIVER**

Here are just a few of the many Franchised Dealers who will gladly demonstrate the Crosley Jewelbox for you:

### **LOS ANGELES**

#### **Downtown**

**Figueroa Radio Shop**  
937 W. Seventh St.  
TUcker 7031

#### **South**

**De Hoog Brothers**  
6120 S. Broadway  
THornwall 0224

**Wilkins Radio Mfg. Co.**  
5311 S. Broadway  
AXridge 0827

#### **Southeast**

**Nilsson & Nelson**  
4320 Avalon Blvd.  
HUmbolt 0827

#### **Southwest**

**L. A. Duncan**  
2891 W. Pico St.  
EMpire 1141

**Monarch Radio Co.**  
Washington at Western  
EMpire 3268

**Osmond Radio Co.**  
3206 W. Washington  
EMpire 2966

**Robinson Radio Shop**  
4528 So. Western Ave.  
VERmont 6683

**Wesenberg Radio Music Co.**  
3819 S. Western Ave.  
VERmont 7929

#### **Hollywood**

**Glow Electric Co.**  
5910 Hollywood Blvd.  
Hollywood 4610

**Hollywood Radio Co.**  
709 No. Western  
GLadstone 2897

**Taylor Radio Co.**  
1451 Vista St.  
GRanite 1312

#### **Lincoln Heights**

**One Eleven Radio**  
111 S. Lincoln Park  
CApitol 5543

#### **Westlake**

**Arcade Radio Studio**  
743¼ S. Alvarado  
DRexel 6859

### **CULVER CITY**

**Culver City Radio Electric Co.**  
6716 Washington Blvd.  
Culver City 3490

### **EL MONTE**

**H. T. Allen**  
209 West Main St.  
El Monte 306

### **GLENDALE**

**Shuck Music Co.**  
211 N. Brand Blvd.  
Glendale 2329

### **LONG BEACH**

**John J. Sawyer**  
543 E. Anaheim St.  
Long Beach 636-235

### **PASADENA**

**Service Radio Shop**  
1164 E. Colorado  
Terrace 7777 and 7908

### **PASADENA- LAMANDA PARK**

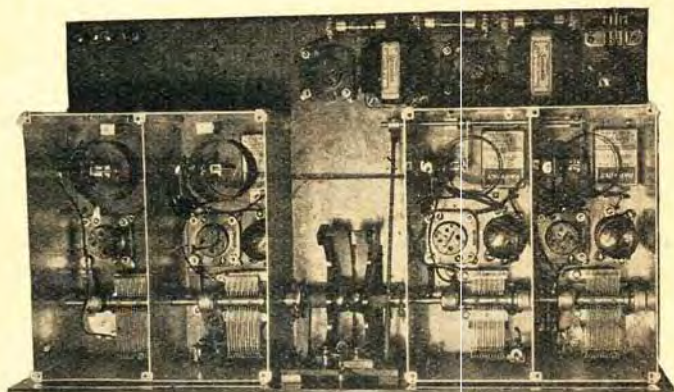
**Nazarian's Radio Shop**  
2480 E. Colorado  
Colorado 5992

### **PUENTE**

**Puente Hardware Co.**  
115 Main St.  
Puente 555-51

**"You're *there* with a Crosley"**

# Shielded Grid Selectivity AT LAST!



Selectivity; the Only Thing That Has Been Lacking in Shielded Grid Sets, is Maintained in the

## HAMMARLUND-ROBERTS HI-Q SHIELDED GRID SIX

Through their special adjustable antenna coupling and the use of a standard "A" tube in the third RF stage with standard RF transformer coupling to the detector circuit.

SELECTIVITY—and still the utmost in sensitivity and the finest of tone quality.

### Distributed By

LOS ANGELES  
Yale Radio Electric Co.  
C. C. Lawton Co.  
Radio Supply Co.  
SANTA ANA  
Williams & Klentz  
SAN DIEGO  
Sunset Electric Co.  
Coast Electric Co.

SAN FRANCISCO  
United Radio Supplies Co.  
Coast Radio Supply  
Frederic H. Thompson  
OAKLAND  
Gilson Electric Supply Co.  
Roose M. Gilson  
SACRAMENTO  
Kimball-Upson Co.

Factory Representatives

## HENGER-SELTZER COMPANY

711 East 14th Street  
LOS ANGELES

377 Brannan Street  
SAN FRANCISCO

WEStmore 5258

# Radio Topics of the Day

*A Weekly Review of Radio News, Thought and Opinion*

## ANOTHER STORM BREWING

When Congress passed the new radio law, those who had been hoping for peace in the radio industry thought the storm was over. But now it is indicated that in the background a new and bigger storm may be brewing.

The first signs of this were noticed when, although the main question that was up was that of broadcasting, the debate in both houses covered a lot of territory only remotely connected with broadcasting.

Much oratory was spilled into the Congressional Record about the dangers of "monopoly" in radio, and this monopoly charge was not confined at all to the broadcasting field. It wandered off into manufacturing and the general field of wireless communication, so that when the sessions were over it was found that there had been a lot of sensational charges about what came to be called the "radio trust."

## OTHER SIDE OF MONOPOLY CASE TO BE HEARD

It is probable that hearings will be begun about April 2nd on the testimony which is to be put into the record as the answer of the Radio Corporation of America and others to the radio monopoly charges pending before the Federal Trade Commission. These hearings will be held at the New York office of the commission, at 45 Broadway. They will last for some months, at least. It took the commission several years to present its side of this case.

In this connection it is interesting to note that the Radio Corporation is having all of the testimony, together with the exhibits in the case, printed. This will make a volume of more than 6000

printed pages. This is the first time in the history of the Federal Trade Commission that such hearings have been printed. It is being done by the corporation and not by the commission. The formal complaint was issued, and this case began in January, 1924.

## NEW COMMISSIONER IS GOOD LISTENER

An outstanding impression of Judge Ira E. Robinson of West Virginia, the new radio commissioner appointed by President Coolidge to succeed the late Rear Admiral Bullard, is that he is a good listener, both on and off the air.

A lawyer, and admittedly not a technical radio expert, Judge Robinson refused to be drawn into any discussion of policies or even to express an opinion as to the present status of the broadcasting tangle. It did develop, however, that, though a sparse conversationalist, he is quite a listener in and takes considerably more than passing interest in the subject.

## THE GHOST WALKS FINALLY

All the difference of a man working on a full stomach as against one who has not had his dinner and is undernourished may hereafter be noted in the efforts of Radio Commissioners Caldwell, Pickard and Lafount who have been working without pay for many months but with their confirmation will receive their salary checks regularly like the rest of the Government employees.

Commissioner Caldwell in fact has been working along since February 3, 1927, without knowing the joys of a pay day so will have more than \$10,000 coming to him.

COMPLETE TABLE OF CONTENTS AND DIRECTORY OF PROGRAMS  
ON PAGE 78.

### RADIO DOINGS

April 14, 1928. Issued weekly at Los Angeles, Cal. Volume 12, No. 16. Subscription \$3.00 a year. Entered as second class matter, November 25, 1922, Los Angeles, Cal. Post Office under the Act of March 3, 1897.

# The RADIO SUPPLY CO.

"The Parts Warehouse of the West"

Is ready to fill your requirements for Parts. Our Stock is complete and adequate at all times

Watch This List of Parts for Changes

Alco Loops	Dudlo Mfg. Co. Wire	Polymet Condensers
Acme Apparatus	Dunham Loops	Preston DX Ground
Acme Wire	Eby Binding Posts	QRS Tubes
Advance Crystals	Ekko Ground Clamps	Racon Horns
Aero-Products	Elkon Chargers	Radiall Co. Amperites
Aerovox Wireless Products	Essenbee Ball Aerial	Rauland Lyric Transformers
Allen Mfg. Co. Parts	Formica Insulation Co.	Raytheon Tubes
All-American Products	Franco B Batteries	REL Apparatus
Amertran Products	Electrad Products	Remler Products
Amperites	Frost Products	Samson Transformers
Amsco Condensers	General Radio Parts	Sangamo Condensers
Artco Coils	Genwyn Coils	Scranton Hydrometers
Baldwin Units	Goodrich Rubber Panels	Selectone Transformers
Balkite Charges, Etc.	Gosilco Wire	Sensory Insulators
Benjamin Elec. Mfg. Co. Products	HFL Transformers	Silver Marshall Products
Bodine Loops & Coils	Hammarlund Products	Sovereign AC Tubes
Brandes Phones	Handy Chargers	Spaulding Bakelite
Branston Honeycomb Coils	Harkness Kits	Steinrite Eliminators
Bremer-Tully Products	Hedgehog Transformers	Sterling Meters and Testers
Bretwood Leaks	H-K Sodderdip Lugs	Stevens Tools
Bruno Coils	Hoosick Parts	Thordarson Transformers
Camfield Coils	Infradyne Parts	Tobe Condensers
Carborundum Products	Jefferson Products	Tom Mack Products
Cardwell Condensers	Jones Cables	Tower Speakers
Carter Products	Karas Products	Trimm Cone Speakers
CeCo Tubes	Kelbrackets	Tyrman Parts
Celeron Panels	Kellogg Parts	Universal Battery Clips
C R L Var High Resistance	Kodol Products	Utah Units
Chicago Kester Solder	Kurz-Kasch Dials and Knobs	Vesta Power Units
Clarostat	Kuprox Chargers	Victoreen Parts
Corning Pyrex	Lynch Leaks	Ward Leonard Products
Crescent Transformers	Madison Moore Units	Wesholly Ground and Aerial
Daven Radio Parts	Magnaformer Units	Weston Products
DeJur Rheostats	Marco Products	Webco Power Units
DeLuxe Products	Mignon S. L. F. Cord	Willard Batteries
Dictogrand Speakers	Mueller Universal Clips	X. L. Variodensers
Dubilier Condenser Corp.	Mountford Resistance	Yaxley Products
	Naald Parts	
	National Soldering Irons	
	National Co. Parts	

DEALERS: Park Next Door at Our Expense

## RADIO SUPPLY CO.

WHOLESALE

912-914 S. Broadway VA. 6063 Los Angeles

New 1928 Catalogue Now Ready—Send for It

Largest Radio Parts Jobber West of Chicago

# TAKEN "ALL AROUND"

We Have a Good Stock of Radio Parts



For You to Look Over

## RADIO SUPPLY CO.

WHOLESALE

912-914 S. Broadway VA. 6063 Los Angeles

NEW 1928 CATALOGUE NOW READY—MAILED ON REQUEST

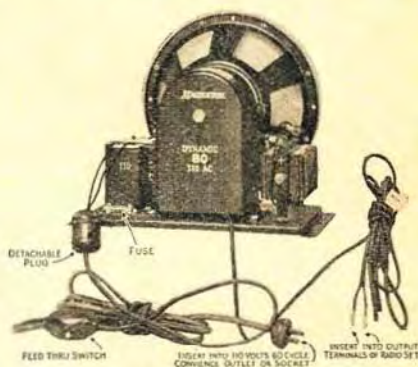
Largest Radio Parts Jobber West of Chicago

# MAGNAVOX

## DYNAMIC



The Aristocrat New  
AC Model 80



### Speaker Units

#### Dynamic 80—AC Operated Type R-5

110 volts to be built in power amplifier.

#### Type R-4

Operating from the "A" battery of your set or from 6-volt trickle charger.

*A Complete Line of All Models on Hand*

*Immediate Deliveries*

*Wholesale Distributors*

## C. C. LAWTON CO.

1125 Wall St.

WEstmore 3960

Los Angeles

## Commission Makes Changes in West and South

The Federal Radio Commission has licensed four Western Coast stations previously authorized to construct and has issued a permit for a new five-watt station in Montana; changes of frequency were ordered for 13 stations in the South and West; power increases were authorized for 3 stations. These changes were authorized to take effect April 1, 1928.

The five stations licensed are:

**KEJK**—Beverly Hills, Calif., 250 watts.

**KFWB**—Hollywood, Calif., issued license specifying 830 kcs.,—1000 watts, unlimited time.

**KOOS**—Marshfield, Oregon, issued license specifying 1450 kcys., 50 watts, limited to 9 p. m.

**KSTP**—St. Paul (Westcott), Minn., issued license to operate on 1360 kcys., 220.4 meters, 2000 watts, unlimited.

**KGHD**—Missoula, Mont., issued construction permit to erect station operating on 1290 kcys., 232.4 meters, with 5 watts power output daytime only (6 a. m. to 6 p. m.).

Changes in frequency were ordered for 13 stations, as follows:

**KJBS**—San Francisco, Calif., operating on 1360 kcys., 220.4 meters, 100 watts, sharing with KGTT, changed to 1220 kcys., 245.8 meters, 100 watts, sharing with KLS.

**KFQU**—Holy City, Calif., operating on 1440 kcys., 208.2 meters, 100 watts, sharing with KFUS and KZM, changed to 1360 kcys., 220.4 meters, 100 watts sharing—KGTT.

**KRE**—Berkeley, Calif., operating on 1220 kcys., 245.8 meters, 100 watts, sharing with KLS, changed to 1300 kcys., 230.6 meters, 100 watts, sharing—KZM.

**KVL**—Seattle, Wash., operating on 1480 kcys., 202.6 meters, 100 watts, sharing KKP and KRSC, changed to 1100 kcys., 272.6 meters, 100 watts, sharing with KKP-KRSC.

**KZM**—Hayward, Calif., operating on 1440 kcys., 208.2 meters, 100 watts, sharing with KFUS and KFQU, changed to 1300 kcys., 230.6 meters, 100 watts, sharing with KRE.

**KKP**—Seattle, Wash., operating on 1480 kcys., 202.6 meters, 15 watts, sharing with KVL and KRSC. Changed to 1100 kcys., 272.6 meters, 15 watts, sharing with KVL and KRSC.

**KRSC**—Seattle, Wash., operating on 1480 kcys., 202.6 meters, 50 watts, sharing with KKP and KVL, changed to

1100 kcys., 272.6 meters, 50 watts, sharing with KKP and KVL.

**KMTR**—Hollywood, Calif., operating on 570 kcys., 500 watts, changed to 580 kcys., 516.9 meters, 500 watts, full time.

**KXA**—Seattle, Wash., issued license changing frequency from 860 kcys., to 560 kcys., 535.4 meters, unlimited time.

**KFAD**—Phoenix, Ariz., operating on 1100 kcys., 500 watts, changed to 930 kcys., 322.4 meters, 500 watts, full time.

**WOAI**—San Antonio, Texas, operating on 600 kcys., 5000 watts, sharing time with WBAP, changed to 1070 kcys., 280.2 meters, 5000 watts power, unlimited time.

**KTHS**—Hot Springs, Ark., Arlington Hotel Co., operating on 780 kcys., 1000 watts, full time; changed to 600 kcys., 499.7 meters, 1000 watts, sharing with WBAP.

**WBRC**—Birmingham, Ala., Birmingham Broadcasting Co., operating on 1240 kcys., 250 watts; changed to 990 kcys., 302.8 meters, 250 watts.

Power increases were authorized for three Southern California stations, as follows:

**WBT**—Charlotte, N. C., C. C. Coddington, operating on 1160 kcys., 1000 watts power, 7 a. m. to 7 p. m., and 750 watts after 7 p. m., granted an increase in power to 1000 watts, full time.

**KUOA**—Fayetteville, Ark., University of Arkansas, operating on 1010 kcys., 500 watts, granted an increase in power output to 1000 watts.

**WREC**—Memphis, Tenn., Radio Station WFEC, Inc., authorized increased power to 500 watts, April 1, now operating on 1200 kcys., 100 watts.

### \* EVENING SERVICE \*

#### IS WHAT WE LIKE!

No matter what make of set, we'll keep her running like new!

Get On Our Monthly Inspection List

PHONE GRANITE 0874

Radio Service Shop, 6209 Santa Monica Boulevard, Los Angeles, Calif.



# Announcing The **Regal** LOS ANGELES



"Worthy of Its Name"

No Batteries  
No Chemicals  
No Aerial  
No Ground  
No Crystal

A Quality Radio Combining

See It! Hear It! Now!  
at  
BROADWAY DEPT.  
STORE

Sales Agents Metropolitan Area

\$98<sup>50</sup>

Absolutely Complete

REPRESENTATIVE DEALERS: WRITE, CALL OR TELEPHONE

Manufactured by **BAKER & FITZGERALD, INC.**

253 WEST SANTA BARBARA

Telephone VERmont 4194

LOS ANGELES, CALIF.

# A Practical Radio That Is Portable

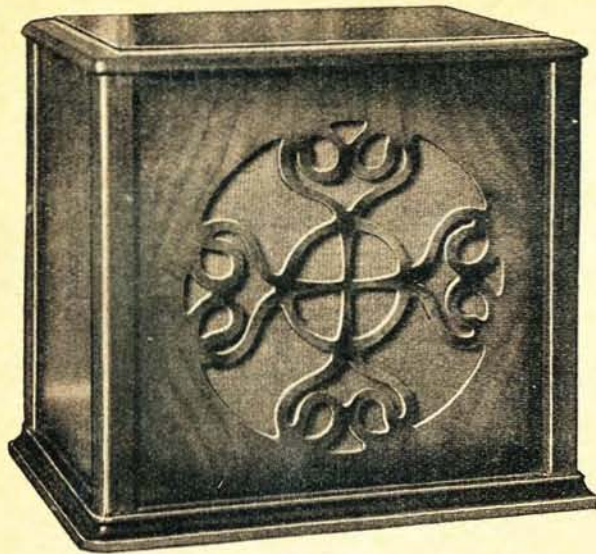
"WISHES" A THING OF  
THE PAST

"I wish we could take the radio along." This thought has been voiced at some time by every radio owner. Portable radios have never been satisfactory for home use, and a home radio was never portable. THE REGAL combines both features without loss of efficiency.



Tone, Selectivity and Beauty

OPERATES ANY TIME,  
ANYWHERE, ANY PLACE  
ATTENTION! CLUBS,  
APARTMENT HOUSES,  
HOTELS, HOSPITALS, Etc.



**T**HE Jensen Dynamic Speaker responds with the same beautiful fidelity to the average radio set using a 171 tube as to the full undistorted output of 210 push-pull amplifiers. Finished in handsome burlled walnut. Height 14", Width 16", Depth 12".

Type D 44 (6 volt operation) \_\_\_\_\_ \$65.00  
 Type D 45 (90 volt operation) \_\_\_\_\_ 67.50  
 Type D 44 A. C. (110 volt operation) \_\_\_\_\_ 75.00

Unit alone—for Radio or Phonograph installation  
 \$47.50 to \$57.50

**J E N**  
**D Y N A M I C**

*.. The Finest*

[ This is Number 5 of a series of advertisements explaining the differences between magnetic and dynamic types of speakers. ]

## Direct Action . . . . .

Common Sense says that fewer working parts and less complicated mechanism mean greater efficiency. Advanced acoustic engineering applies the dictates of Common Sense to the radio reproducer.

The Jensen Dynamic Speaker is the result. In this instrument the coil—freely suspended in a magnetic field—is firmly attached to the cone. The vibrations of the coil are directly transmitted to and magnified by the cone. It follows that in this speaker there is attained a degree of accuracy impossible in the other types.

To this accuracy is credited the mirror-like tone fidelity which substantiates the Jensen claim: "The Finest in Radio."

**JENSEN RADIO MFG. CO.**

212 Ninth Street

Oakland, Calif.

Distributed in Southern California by

**YALE RADIO ELECTRIC CO.**

1111 Wall Street

LOS ANGELES

WEStmore 3351

**S E N**  
**S P E A K E R**

*in Radio ..*

## ? Questions and Answers ?

● A Weekly Department Conducted by K. G. Ormiston, I.R.E. ●

**QUESTION**—Please give diagram and data for the most efficient four-tube circuit, using Uncle Sam coils, with stage of R.F. ahead of regenerative detector.

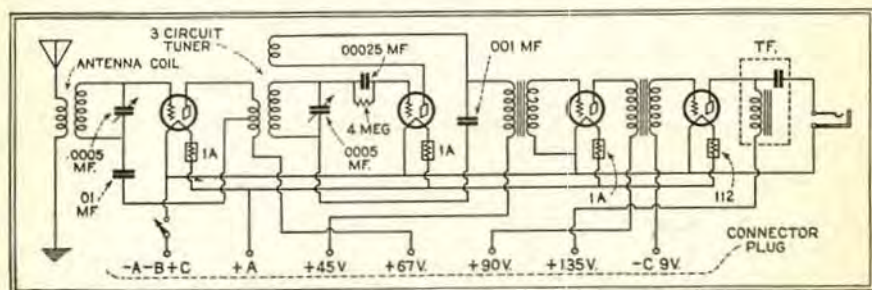
E. C., Los Angeles, Calif.

**ANSWER**—The diagram is given herewith. It is a very efficient little set. Of particular interest is the method of stabilization used in the R.F. stage. The primary winding of the three circuit Uncle Sam tuner (which is the plate coil of the R.F. tube), has a mid-tap which connects through a .01 fixed

**QUESTION**—I am interested in a short-wave transmitting radiophone set advertised in Radio Doings. Would some sort of a license be necessary to operate such an outfit, and where can it be obtained?

J. A., Santa Monica, Calif.

**ANSWER**—Yes, all transmitting stations must be licensed by the Department of Commerce. Suggest that you write to Bernard Linden, Supervisor of Radio, Custom House, San Francisco, explaining in detail just what you wish to do and he will give you complete information as to the necessary procedure.



"Uncle Sam Four"

condenser to the lower end of the secondary of the antenna coupler. This affords relatively equal neutralization on all frequencies.

All four tubes operate through filament ballast resistors, thereby reducing the number of controls to three,—the two variable condensers and the tickler. In addition to the Uncle Sam coils, Hammarlund Midline condensers are recommended, Silver-Marshall audio transformers and National tone filter. A 112-type power tube is used in the last audio stage and the tone quality is of a high order. A Yaxley cable and plug may be used for the seven connections from the set to the batteries or power supply units.

**QUESTION**—In operating a shielded grid tube on a 6-volt battery, what rheostat value should be used?

A. H. M., Los Angeles, Calif.

**ANSWER**—Since we must drop 6 volts to 3.3 volts at the filament terminals, and the filament current is to be 1.3, we find by application of Ohm's Law that a 20-ohm resistor will have a drop of 2.7 volts across its terminals, with a current of 1.3 amps. Hence, a fixed resistor of 20 ohms should be in the circuit, together with a rheostat, so that when the rheostat is cut all out, not more than 3.3 volts is applied to the filament. Would suggest a 25-ohm rheostat in series with the 20-ohm fixed resistor to afford a suitable variation.

**TONE QUALITY In Custom Built Radios With SELECTIVITY**

Old Sets Electrified, Balanced. Magnaformer 9-B-HI-110".  
S. B. T. 6, Scott's Super and others built to order, D.E.  
7764, S. E. Cummins, 708 Mortimer, Huntington Park, Cal.

# TRADE NEWS

## Abbott New Crosley Sales Manager

H. Curtiss Abbott, of Chicago, nationally known in the fields of radio and music, has accepted the position of general sales manager for The Crosley Radio Corporation.

Mr. Abbott, a Yale graduate, has had many years of experience in the radio business, and has made an enviable record in the selling end of the industry.

With the Crosley Radio Corporation, Mr. Abbott has a working organization of 166 distributors and more than 18,000 dealers, representing every community in the United States.

Mr. Abbott firmly believes that the surface has hardly been scratched in the radio field. He believes the demand for Crosley products this year will be greater than ever and is laying plans for the most successful business in its history.

"While there probably will be an ever-present demand for battery operated sets, the public is being thoroughly sold on the advantages of the one-unit sets which are operated from light sockets," Mr. Abbott, said, "and the future is very bright for this product. It has been on the market long enough to have proven its worth, and there is no reason why a company with the reputation of the Crosley Radio Corporation for manufacturing the best radio sets at the lowest possible price, should not do a tremendous business in 1928."

## Let's Go!

The Radio Manufacturers' Association Trade Show and Convention, Stevens Hotel, Chicago, June 11-15! If you are in the radio business, you cannot afford to miss it. All space in the show has been sold—it will be a greater exhibition than last year. Matters of great importance to the industry are scheduled for discussion during the Convention. Arrangements have been perfected to handle 4000 guests at the great annual banquet. Better make your transportation, hotel and banquet reservations now!

## An Old Business Expands

M. L. Baker and Gilbert Fitzgerald, better known as Baker & Fitzgerald, of 2603 West Fifty-fourth street, Los Angeles, have conducted for nearly four years a unique and successful radio business, manufacturing the Supreme receiver and retailing direct to the public. Without extensive advertising or publicity, grounding their efforts solely on the merits of their product and personal contacts with the customer, they have in less than four years done a gross business of \$150,000.

This Spring a radically new departure in their policy is taking effect. The old Supreme line of A. C. receivers is being discontinued, and after a sale of remaining stock at the Fifty-fourth Street store, the retail business will be carried on with standard nationally-advertised lines of radio sets and accessories in stock.

The manufacturing end of the business, in new and enlarged quarters at 253 West Santa Barbara, will, from now on, concentrate on one new receiver model each year, under the new trademark of "Regal." After four months of experimentation, the first Regal model is now on the market. It is truly a new departure in radio, an attractive little console model (A. C. operated, of course), easy to look at and to listen to, and with the really unique feature of portability. The pedestal stand can be easily removed, leaving the cabinet of a convenient size and weight to be stowed away in the back seat of the family car for vacation or week-end trips. This feature should make a strong appeal to the public of the Pacific Slope, most of whom are lovers of the Great Out-of-Doors, and prone to take trips on the shortest notice.

Mr. Robbins of the Broadway Department Store, Los Angeles, was quick to see the merchandising possibilities of the new Regal set, and secured the exclusive downtown franchise. Other representative dealers will be appointed at strategic points throughout the West.

# Steinite

## ELECTRIC RADIO

(Licensed under RCA patents)

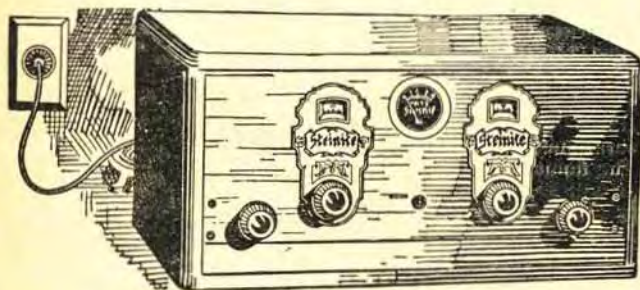


TABLE MODEL

# \$93<sup>50</sup>

(less tubes)

THE STEINITE ELECTRIC comes to you in one complete unit—absolutely no outside attachment!

No unsightly wiring or cables—no intermediate power units to hide—nothing to watch or charge—no acids, liquids or chemicals! Consumes less than a penny's worth of current an hour. Beautiful solid (not veneer) Philippine Mahogany cabinets, Duco finished.

WHY BUY AN UNTRIED electric set, when you can buy the time-tested STEINITE ELECTRIC at its amazingly low price? STEINITE Electrics have given millions of hours of satisfactory performance in 50,000 American homes—they were introduced as far back as the 1926 Radio Shows

Wholesale Distributors

## NATIONAL RADIO & SUPPLY CO.

141-43 W. Washington    WEstmore 2748    Los Angeles

# Steinite

## The Greatest Radio! Sensation of 1928!

This remarkable receiver can be heard at any of these dealers. Go to one of them TODAY—there is one in your vicinity. Examine it closely—then BUY—safe in the realization that you have invested wisely:

**LOS ANGELES**

The Starr Piano Co.  
Downtown Headquarters  
630 S. Hill St.  
TRinity 3905

Potter Radio Sales Co.  
1817 W. 54th St.  
VERmont 1210

E. E. Tompkins  
(S.P. Watch  
Inspector)  
2635 Dayton Ave.  
CApitol 2952

Ninth & Union  
Radio Shop  
1605 W. 9th St.  
DUnkirk 4091

(Evening Demonstrations)

Radio Exchange and  
Service Co.  
4211 S. Broadway  
AXridge 6652

W. A. Graham  
4355 S. Main St.  
(at Vernon)  
HUmbolt 0609

Jatho Radio Service  
5410 Central Ave.  
AXridge 1961

H. A. Everest  
1032 N. Ogden Dr.  
GRanite 9915  
(Nightly Demonstrations)

**INGLEWOOD**

Reliable Radio Sales  
& Service  
114 N. Market St.  
Phone 993

**GARDENA and  
TORRANCE**

Gardner Music Co.  
1601 Gramercy  
Phone 312-J

**LONG BEACH**

Seaside Electric Co.  
63 S. Magnolia  
Phone: 675-263

Radio Glen  
5203 E. 2nd St.  
Phone 343-230

Kelm Radio Co.  
147 E. 4th St.  
(N.W. Cor. 4th  
and Locust)  
Phone 618-329

**POMONA**

No Battery Radio Co.  
223 N. Geary  
Phone: 1245

**SAN FERNANDO**

Porter Av. Hdwe. Co.  
1040 Porter Ave.  
Main 11

**VENICE**

All Electric Radio  
Shop  
1029 Washington  
Blvd.  
(opp. Martha Wash-  
ington School)  
Phone 644-10

# MAGNAVOX

## NEW 110 A. C.



The Aristocrat New AC Model 80  
\$85.00

Distributed by

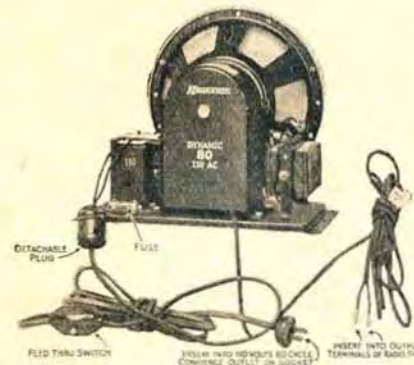
**Splitdorf Bethlehem Co.**

727 Venice Blvd.  
Los Angeles

895 O'Farrell St.  
San Francisco

# MAGNAVOX

## DYNAMIC SPEAKERS



Speaker Units Dynamic 80  
\$50.00

Distributed by

**Splitdorf Bethlehem Co.**

727 Venice Blvd.  
Los Angeles

895 O'Farrell St.  
San Francisco

# MAGNAVOX DYNAMIC POWER SPEAKERS

*Make Your Radio Set  
a Musical Instrument*

## **Modernize Your Present Phonograph**

The principle employed in this type of Speaker is as far ahead of the old type Speakers as the modern automobile is ahead of the horse and buggy.

You will enjoy your radio set or phonograph as never before.

This Speaker can be installed in your present radio or phonograph, giving you the last word in quality.

Magnavox Dynamic Cone Speakers will reproduce accurately without distortion, radio speech or music delivered to them through your radio set or phonograph.

# MAGNAVOX DYNAMIC SPEAKERS

*Wholesale Distributors*

**LEO J. MEYBERG COMPANY**

Westmore 9255

1022 So. Wall St.

Los Angeles, Calif.

# THE STUDIO



Left—John Mechan, known as the second John McCormack, comes to KNX after two years of broadcasting over KYW, Chicago. Although Mr. Mechan's repertoire includes selections from opera to jazz, he is best known for his Irish songs and ballads. Mr. Mechan is now broadcasting exclusively from KNX.



Above—The Zoellner Quartet have been twenty-four years before the public without a change in the personnel. During their eight years in Europe, they gave over two thousand concerts. The Quartet broadcasted over KHJ for two years, and are now being heard over KNRC every Tuesday and Saturday night, from 9 to 10. The personnel is: Antoinette Zoellner, violin; Amandus Zoellner, violin; Joseph Zoellner, Sr., viola; and Joseph Zoellner, Jr., violincello.



# American Radio All-Electric Set

The illustration is that of the new and very compact all-electric five-tube set developed and marketed by the American Radio Company, Los Angeles. Everything—power supply units, radio receiver, and loud speaker—is enclosed in the one cabinet. This feature, together with the one-dial control, makes the set attractive for those who desire simplicity and want to enjoy the entertainment afforded by radio with the least expense and bother.

The radio frequency tuned stages are ganged on one dial, and the detector is an A. C. tube of the heater type. The

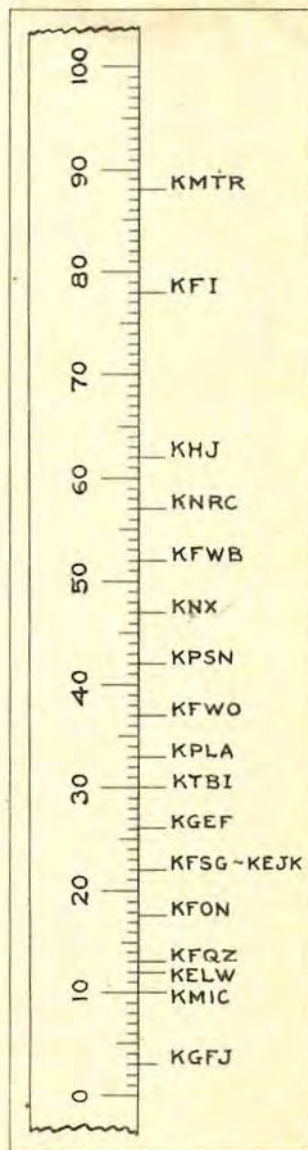


"B" power supply unit employs a gaseous rectifier tube and also furnishes C biasing voltages. The loud speaker is of the air-column type and delivers a surprising tone quality for its very compact size.

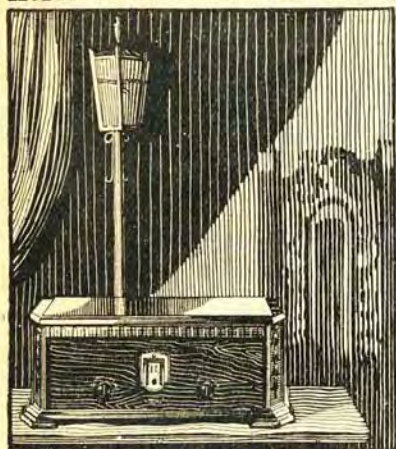
The selectivity of the receiver is all that could be desired. Operating downtown in close proximity to five stations, all local stations were separated without difficulty. In operation, the main dial selects the station and the small knob above the dial regulates the volume. The off and on switch is located at one end of the cabinet.

The unusual degree of selectivity is obtained through very careful matching of coils and condensers and in the initial ganging adjustments. Selectivity is the feature which is usually lacking in a set of this type, but the American has successfully maintained it to a high degree.

Antenna and ground connections are required, the aerial dimensions depending upon location and varying from 40 to 100 feet.



*Dial strips of American All-Electric with actual logging of local stations.*



ADVANCED HI-Q SIX

**The Best in Radio  
Must be  
CUSTOM-BUILT**

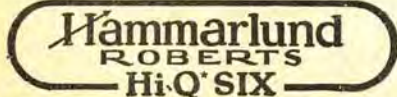
The new advanced "Hi-Q SIX" is exclusively a CUSTOM-BUILT receiver—designed by America's leading manufacturers—built with finest parts—incorporating every modern constructional feature—and producing quality performance that only the best of everything in radio can produce.

Yet you can have this remarkable set for at least \$100 less than high-grade factory-assembled receivers. Complete parts cost only \$95.80. You can easily build it yourself from complete instructions in our Constructional Manual—or have your local Hammarlund-Roberts Radiotrician build it for you. Get a copy of this money-saving book from your dealer—or send 25c to us direct.

**Associate Manufacturers**

Samson Electric Co.  
Hammarlund Mfg. Co.  
Sangamo Elec. Co.  
Carter Radio Co.  
Yasley Mfg. Co.  
H. H. Eby Mfg. Co.

Benjamin Elec. Mfg. Co.  
Acme Wire Co. (Parvold)  
International Resistance  
Co. (Durham Resistors)  
Radiall Co. (Amperite)  
Westinghouse Mica



**Hammarlund-Roberts, Inc.**

1182 Broadway, Dept P New York City

**What ONE  
CeCo  
Tube Did**

UNITED STATES DEPARTMENT OF  
AGRICULTURE  
FOREST SERVICE  
MODOC NATIONAL FOREST

ALTURAS, CALIFORNIA

March 28, 1928.

Gentlemen:

*The CeCo Type H detector tube arrived O. K., and it is surely a wow.*

*We have had poor DX weather, so have not had an opportunity to give it a fair test for DX. It sure brings out the locals and makes the old set stand up on its hind legs and strut its stuff!*

*Very truly yours,*

**GEORGE W. LYONS.**

**DON'T BE "SWITCHED"  
DEMAND CeCo TUBES**

Factory Representatives

**B. KRUGER & CO.**

500 N. Huntley Drive, West Hollywood

Phone OX. 3897 Sherman P. O.

# SAVE \$100



## Compare the NEW ARBOR-PHONE

Using NEW AC Tubes  
With Any Radio Priced  
\$100 Above It

### Here's What You'll Find

Hear "Far Away" Stations Clearly.  
Bring in "Locals" More Sharply.

The amazing ability of the new Arbor-Phone to bring in realistic reception on both long and short wave lengths is accomplished by the marvelous Loftin-White circuit. Operates with equal distinctiveness at every point on the dial — an unequalled feature.

#### Most Natural Reception.

By using two power tubes, lowest base and highest treble are faithfully reproduced with life-like realism heretofore unknown.

#### All-Electric Set.

The new Arbor-Phone is an all-electric set. Simply plug into light socket. No batteries, acids or eliminators.

#### Distinctive Models.

Distinctive walnut table cabinets.

Also a wide variety of beautiful consoles. Harmonize perfectly with your furnishings.

#### Watch-like Construction.

Simplicity of watch-like construction insures trouble-free performance. Finest materials and engineering skill mean fewer parts and less wiring in this set. Thus the new Arbor-Phone assures you trouble-free performance month after month.

Ask your dealer to let you operate this set yourself. If your dealer does not carry this set, come to us for a demonstration. Log it far and near, station by station. Compare it with other sets priced \$100 above to prove its superiority. Try it in your own home. Then you will appreciate the new joy this set brings to radio reception and the worthwhile saving it gives you.

Write for full information. Address

**A. J. Tobey Co.**  
RADIO ACCESSORY JOBBER

Distributors for Southern California

1145 Wall Street

Phone WE. 8772



Through the courtesy of the C. E. Manufacturing Company of Providence, Rhode Island, Radio Doings offers as a prize for the best letter to the DX Club one of the famous eCo type "H" Special detectors. This tube is especially suitable for DX work, as it is a highly sensitive "hard" detector without background noise. And remember, it is not always the big expensive set with the longest list of DX that wins the prize—everybody has a chance.

### FIRST PRIZE

DX Club:

I have been reading over the DX page in your little red magazine for quite some time, and have finally decided to send in my log, which includes some of the hard ones.

My furthest ones being 2BL, 2YA, 2FC, 3LO and 5CL, JOCK; for some of the closer ones I have 3XN, PWX, CKWX, CFCQ, CFRB, CNRV, KDA, KOLR, KDYL, KEX, KFAB, KFAD, KFAU, KFBU, KFQB, KGA, KGRS, KGW, KHQ, KJR, KMA, KOB, KMOX, KOA, KOIL, KOIN, KOMO, KSEI, KSL, KTHS, WSAI, WLW, KVOO, WBAP, KWKH, WAAW, WBBM, WDAG, WEA, WFIW, WGN, WLIB, WRR, WHO, WJBT, WOC, WOWO, WSM, WNAX, WJZ, WJAZ. In addition to the above, have received 37 California stations. Have verifications for most of the distant ones. Will send them if you so desire.

G. VANDEKAMP,

U. S. Naval Training Station,  
San Diego, Calif.,  
Radio Material School.

DX Club:

I enjoy reading your Radio Doings. Am using a Zenith Radio, Model 7. I have received all stations on the loud speaker. During the past month I have listened to the following:

WBBM, WCCO, KWKH, WGN, WBAP, KMOX, WLIB, WJBT, KMA, WIBO, PWX, KDKA, CNRV, KYW, WLW, WOAI, 3XN, WOS, KMMJ, WJAZ, KFCE, WENR, WLS, WSM, KOIL, CYJ, WFIW, KRLD, CJGX, WTAM, KFDM, WSUI, WOI, KFJZ, WDAG, WBT, KDYL, WSAI, WJJD, CZE, KWVG, CZF, WRR, WHO, WTAW, WEBH, WJR, WOC, WCB, WQT, WGY, KSEI, WFLA, WWJ,

KFAU, KFQB, KOW, KVOO, WJZ, WSUN, KTHS, KFAB, WJAD, WFAA, CFCY, CKWX, CKCD, KOCW, KFBU, K TSA, WREN, CFCQ, WCX, 9GW, WHB, CKCW, WIL, KMO, CFCN, KTNT, WRVA, WDAE, WOK, and KFKA. I am not including Pacific coast stations. I am receiving new stations every night, about four and five.

GEORGE FARQUHAR,

Box 76,  
Ojai, Calif.

DX Club:

I haven't noticed any letters to your DX Club from women, but here I come with my list. Have had my Crosley Band Box, 7-tube set just one month the 15th of this month and here is what I have received: Thirty-eight California stations, 8 Utah and Colorado stations, 14 Washington and Oregon stations, and this following list of DX stations; most all are verified or verification on way:

KFUM, KMA, KTHS, KSEI, KWKH, KNRV, KMMJ, KFKU, KGER, KFBU, KOB, KWWG, KVOO, KGEH, KFBE, KFCE, KGEZ, KMED, KFAB, KMOX, KTAP, KFAU, WRR, WMW, WNAX, WREN, WAGM, WOC, WTAD, WMAQ, WTAM, WOAI, WBBM, WBAP, WCCO, WGN, WFAA, WBCN, WHO, CKCL, CFCQ, CKWX, CJEA, CNRE, CFYC, CKUA, CKGW, CJOR, 3XN, 6XJ.

I also tuned in on a station just as they were signing off and I got the call letter KFQD, but didn't hear any of the program. All came in clear with the exception of KGER and WAGM, KGEZ. I think this is a very good list of stations for the time I have had my set. Am hoping to pick up China and Australia one of these mornings.

Very truly yours,

MRS. MABEL LUTGENS,  
1151 Surprise Valley Rd., Reno, Nev.

**BT Counterphase 8—World's Greatest Radio—Sold with a Distance Guarantee. H. A. Everest, 1032 North Ogden Dr. GRanite 9915.**

# Frequency Channel Listing

250 Watts and Up—Corrected to March 30, 1928

Chan.	Freq.	Meters	Log	Stations
1	550	545.1		KSD, KFUD, WMAK, WPTF, WFAA, KFDY, WDAY
2	560	535.4		WCAC, WTCI, WHO, KXA
3	570	526.0		WNYC, KFKX, KYW
4	580	516.9		WMC, WWVA, WTAG, WFLA, WSUN, KTMR, CYCH, CHMA, CJCA, CNRE
5	590	508.2		WOW, KLX, WEEI
6	600	499.7		WBAP, CFCH, KTHS
7	610	491.5		KGW, WEAJ
8	620	483.6		WJAR, WCFL, WEMC, KUSD, WTAJ, KFDM, KFBU, KFUM
9	630	475.9		WSB, WSUI, CJGX, CYR, CFCT
10	640	468.5		WRC, KFI
11	650	461.3		WNAC-WBIS, KRLD, WRR, KFNE, WCAE, KUOM
12	660	454.3		WJZ, KFRG
13	670	447.5		WMAQ, WQJ, KFOA
14	680	440.9		WJR-WCX, WIBG, KFSD, WAAW
15	690	434.5		CFCN, CFAC, CJGJ, CNRC, CNRO, NAA
16	700	428.3		WLW, WMAF
17	710	422.3		WOR, KPO, WOS
18	720	416.4		WGN-WLIB
19	730	410.7		CFGP, CFYC, CHPC, CHYC, CKAC, CKCD, CNRM
20	740	405.2		WLIT, WFI, WCCO
21	750	399.8		WEAR, WTAM, WSBT, KHJ, KGBU
22	760	394.5		KMA, KWRH, WHN, KQAO-WPAP, KTW, KWSC, KOB
23	770	389.4		WBBM, WAAF, WJBT, WABI
24	780	384.8		WQAM, WMBF, KGO, CKY, CNRW
25	790	379.5		WCAJ, WGY
26	800	374.8		KNRC, WOC
27	810	370.0		WDAF, KHQ, WLWL, WMCA
28	820	365.5		WEBH, WJJD
29	830	361.2		WSAI, KFVB
30	840	356.9		CFCA, CHIC, CHNC, CJSC, CKCL, CKLC, CKNC, CNRT
31	850	352.7		KLZ, WWJ, WEW
32	860	348.6		WOO, WGBS, WIP, KVOO, KJR
33	870	344.6		WLS, WGBD, KFQD
34	880	340.7		WAPI, WJAX, WHB, WOQ
35	890	336.9		WSM, KNX
36	900	333.1		KFQB, WJAD, WHA, WLBL, WBZ, WBZA, KSAC, KSEI
37	910	329.5		CFQC, CJGC, CJWC, CNRS, CHUC
38	920	325.9		KOA, WRNY, WPCH
39	930	322.4		WRHF, WHAS, WKAQ, KFAD
40	940	319.0		KOIL, KFAB, KOIN
41	950	315.6		KDKA, KPSN
42	960	312.3		CJBR, CKCK, CKCW, CNRR
43	970	309.1		WABC, WBOQ, KOMO, CZF
44	980	305.9		WHT, WIBO, WHAZ
45	990	302.6		WGR, KSL, WNAX, WBRG
46	1000	299.8		KFWO, KMOX, WPSC, WBAK
47	1010	296.9		WWNC, WMSB, KUOA, KGW, CJRM
48	1020	293.9		WODA, WGL, WTMJ, KPRC, WLWV, KGCH, WSYR
49	1030	291.1		CFRB, CJBC, CJYC, CRCZ, CRSM, CNRV
50	1040	288.3		WDBO, WENR, WBCN, WBET, KPLA
51	1050	285.5		WBAL, KFAU, WJAG, KMMJ, WCAL, WDWJ
52	1060	282.8		WAIU, WEAO, KFEX, WDRG, KVI
53	1070	280.2		WHAM, WTAB, WOAI
54	1080	277.6		WGHP, WKAR, KWWG, KEX
55	1090	275.1		WEAN, WTAS, WFBM, KTBI

# Frequency Channel Listing--Cont.

250 Watts and Up—Corrected to March 30, 1928

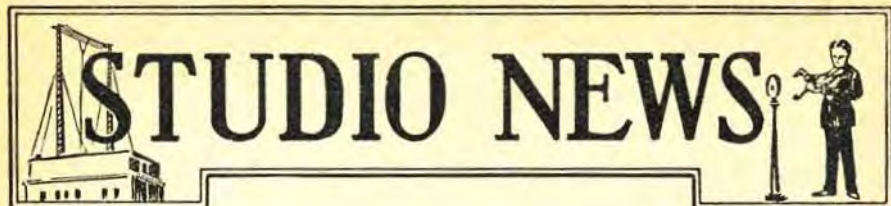
Chap.	Freq.	Meters	Log	Stations
56	1100	272.6		WPG, WRM, WBAA, KFJF, WSKC
57	1110	270.1		WJAS, KQV, WGST, WMAZ, WISN, WHAD, WGWV, KGU, KOAC
58	1120	267.7		WDAE, KSBA, WAAM, WNJ, WGGP, KFWI, CPRC
59	1130	265.3		WNOX, WOI, WHK, K TSA, WIGC
60	1140	263.0		WSEA, WJAZ, WMBI, WDAG, KGFH, KGEF, WJBI, WEAM
61	1150	260.7		WCMA, WOOD, WRHM, KGA, WCAU, WNBH, WFIW
62	1160	258.5		WFBL, WEB, WNAL, KOCH, KFUL, WIL, WSBF, WBT
63	1170	256.3		KTNT, WCSO, WASH, WBBK, WEEH, WLTH
64	1180	254.1		WRVA, WREN, KFKU, KMO, WTAQ, WHEC-WABO
65	1190	252.0		KEJK, WORD, WMBB-WOK, WKBF, KOCW, KFSG
66	1200	249.9		KPKA, KFRU, WCOA, KFVR
67	1210	247.8		WIOD, WDWF-WLSI
68	1220	245.8		WAAT, WEVD, WHDI, WFBE, WKRC, WWL, KFH, KLS, KFPY
69	1230	243.8		KWUC, KSCJ, KGRS, WFBR, WCAO, WDOD, WCAD
70	1240	241.8		KFKB, WEDG, WGES, KFON, WERC, WMAL
71	1250	239.9		KFJR, WOAN, WBAW, WJAM, KWCR, WNAD, WOAX, WCAP, WSPD
72	1260	238.0		WLBI, WRBC, WIBX, WJBB, WQBA
73	1270	236.1		KFDX, WGBF, KFMX, KFWM, WHAP, WMSG, WBNY, WTAR-WPOR, WTAD
74	1280	234.2		KWK, WBHS, WCAH, KDYL
75	1290	232.4		WJKS, WSBC, WBRL, KUT, KFQZ, KFPR
76	1300	230.6		KFEQ, WQAN, WGBI, WDBJ, WCOG
77	1310	228.0		WOWO, WHBP, KELW
78	1320	227.1		WVAE, KSO, WSGH-WSDA, WBBC, WJAY, WFJC, KFEL, KGHB
79	1330	225.4		WMAC, WLAC, WDAD
80	1340	223.7		WFAN, WCAM, WPKB, WCRW, WPGC, KMIC, WSAJ, WNRC
81	1350	222.1		WAMB
82	1360	220.4		WKBH, KSTP
83	1370	218.8		KOW, WKBQ, WKBO, WCGU
84	1380	217.3		WKBW
85	1390	215.7		WPWP, KFVD
86	1400	214.2		KFWE, WCWK, WCSH
87	1410	212.6		WRAX, WJBI, KWEA, WSAH
88	1420	211.1		WCDA-WBRS
89	1430	209.7		WOKT, KVOS, WCBS, KSOO, KGHA, WTFI, KGHF
90	1440	208.2		WLBZ
92	1460	205.4		WMBD, WABF
93	1470	204.0		WHBL, WIBW, WBS, WLBX, WKEN
94	1480	202.6		WTFE, WRUF
95	1490	201.6		KPOF
96	1500	199.9		WRAH

## AN OLD-TIMER MOVES

The Brode Electric Company, located for the past 28 years at 116 East Third Street (and immediate vicinity), Los Angeles, is finally "pulling stakes" and moving into larger quarters at 222 South Spring Street. Mr. A. W. Brode, the genial proprietor, can tell many a tale of the "good old days" when the Mason Opera House was the latest world wonder, and Seventh and Broadway was out in the country! Mr. Brode's many friends in the trade and

among radio fans will wish him continued success in his new location.

The Los Angeles Soap concerts, broadcast each Wednesday evening at 8 o'clock, over the Northwest Network and originating in the studios of KGW, are conceded to be unique examples of program construction. The programs are of light opera and musical comedy type.



# STUDIO NEWS

KHJ offers an interesting hour Sunday, April 15, from 1 to 2, when Dad Richards, one of the few people still living who saw Lincoln assassinated, will tell the story.

Monday night, from 12 to 2, is Frolic Night at KEJK, featuring a "What Have You" program.

Miss Lucy Day, an exclusive KNRC artist, will give a program of French Music and songs from this station, Wednesday, April 18, from 9 to 10 p. m.

Dean Metcalf, formerly announcer at KFI, is now the daytime announcer at KMTR.

The Diana Music Master, a twelve-piece jazz orchestra, is now a daily feature from KFQZ, from 6:30 to 7:30 p. m.

On Monday evening, April 16, at 7:15, KOA will broadcast a program of Negro Spirituals, sung by a negro choir.

Music of merit from France, some of which has not been heard in this country, will be played by the Parisian Quartette during their program on April 20th, from 6:30 to 7:30, over KGO.

Earle Burtnett's Biltmore Orchestra will be featured over KHJ every night except Sunday, from 10 to 12 p. m.

Through the medium of Radio, the Alumni of the University of Southern California all over the United States, will be able to enjoy the U. S. C. Alumni dinner to be given April 24th at the Biltmore hotel. KHJ will broadcast the entire program, consisting of Trojan songs, yells and speeches.

The Federal Ortho-Sonic Hour is one of the outstanding features at KFWB every Thursday evening at 7 p. m.

KMO, Tacoma, and KGY have each installed one of the Preston Broadcast Grounds. With this positive ground they expect to have their programs heard at a greater distance.

Two organ programs are now being broadcast daily from KNRC: One at 1 o'clock, a classical and semi-classical program, and the second at 5:45, which is a request hour.

Craig Leich, a Victor Recording artist, whom many of the radio fans will remember as being the feature soloist of Henry Holstead's band, will sing Tuesday night at KFQZ.

Mr. Walter McCreery, formerly manager of KGFJ, is at present conducting a classified hour, from 12 to 1, over this station. This luncheon hour program features the Elite Girls singing and a violin and piano duo.

KMTR, is now featuring Melba Allen, a colored pianist and vocalist, who enjoys the reputation of being one of the "hottest" entertainers of her kind. She will be featured on a program Tuesday, from 7 to 7:30.

The male quartette from the Ohio University School of Music that is touring the country under the direction of Clarence C. Robinson, will give a half-hour program from KFI on April 16, from 9 to 9:30.

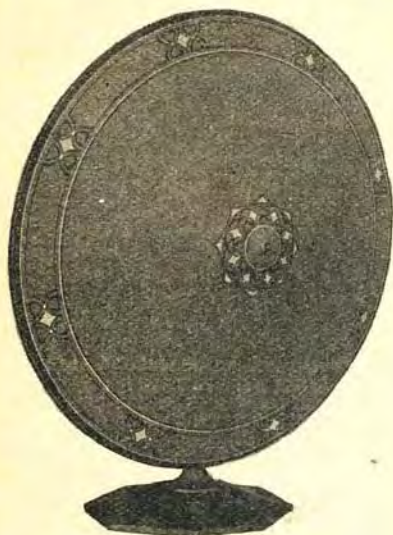
Every Thursday, from 5:30 to 6 p. m., KPO broadcasts a program of International News. This is a weekly summary of the World's News Topics.

On Tuesday evening, April 17, from 9 to 10 p. m., KGW will feature an hour's program by the Maxwell House Coffee Orchestra, with Stephen Gaylord, baritone, and Dorothy Lewis, contralto.

# HUNDREDS

Are Taking Advantage of Our Sensational Speaker Special  
JUST THINK—A HIGH QUALITY

# SPEAKER



Is Yours for

**\$1** DOWN  
then  
\$1.25 Week

—★—  
We Carry the  
New 24-Inch

**Western Electric**

(Shown on Left—Price \$35.00)

**New Improved Rola**

**Atwater Kent**

**Fada**

AND OTHERS

*Your Radio Is No Better Than Your Loudspeaker*

— A FEW SPECIALS —

\$3.00 Detector Tubes . . . . .	59c	99 and 201-A Tubes . . . . .	75c
\$5.00 Brandes Superior Phones.	\$2.10	\$25.00 Kellogg Speakers . . . . .	\$4.95
Reliable Dry Cells, 3 for . . . . .	.95c	45-volt B Batteries . . . . .	\$1.25
Output Transformers . . . . .	\$2.95	4 ½ -volt C Batteries . . . . .	.35c
Aerial Wire, 100 feet . . . . .	.29c	\$10 Dictagraph Fono units . . . . .	\$1.95

—SHORT WAVE COIL KITS, Complete Set . . . . . \$4.50—

— IN STOCK —

Falck Claroceptors, Wesholly Grounds and Aerials, Armo Variable Condensers  
Rayovac Batteries, Pilot Parts Products. New Prices

“RADIO AND ELECTRICAL”

MAIL ORDERS

Established 1904

TRinity 4281

# J. C. RENDLER

625 SO. MAIN ST.

OPP. P. E. DEPOT

LOS ANGELES



## Didja Ever Try It?

Now that the public is beginning to realize that there is such a thing as good radio reproduction, and have generally invested in equipment which includes good audio amplification and loud speakers that have some musical sense, they are all set to take the fullest advantage of this equipment by allowing it to serve as an electric phonograph, and thus increase the entertainment possibilities.

All that is necessary is some means of turning the phonograph record (and any old style phonograph or portable will serve the purpose), and a pick-up unit, such as the Patent Phonovox. And if your amplifier and speaker are real good, the result will be equivalent to any high-priced electric phonograph on the market.

Nearly every owner of a high grade radio receiver has an old style phonograph kicking around the house. As a general rule it is never used, because its tone quality is so terrible in comparison with the radio. But just you put a Phonovox on the old heap's tone arm, plug into the detector socket of your set and sit back and listen!

# PRESTON Radio Ground

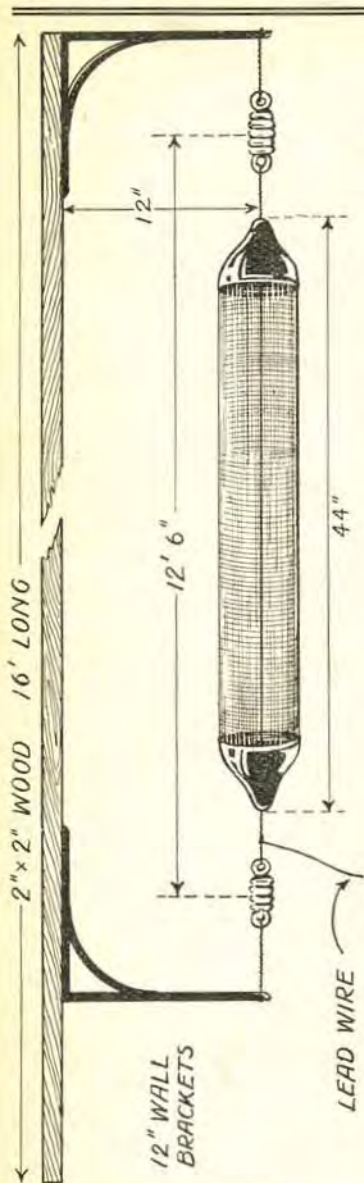
is an ideal underground antenna for summer radio reception. It actually eliminates static-like resistance noises and greatly improves tone qualities of your receiver.

Ask your dealer about the Preston Ground or send name and address for free descriptive folder.

UNGAR & WATSON, INC.  
Manufacturers

1366 So. Figueroa St.  
Los Angeles Phone WEst. 2411

THE  
W  
E  
S  
H  
O  
L  
L  
Y  
A  
E  
R  
I  
A  
L  
\$  
7  
5  
0  
S  
E  
E  
I  
T  
A  
T  
Y  
O  
U  
R  
D  
E  
A  
L  
E  
R



Sunset Mfg. Co.

7471 Melrose  
Los Angeles

HEmpstead 4941

The Home of Better Reception

## "Super-Hayes"

By K. G. O.

In our series "A Study of Great Men in History," we are presenting today a reproduction of the physiognomy of E. K. Hayes, taken in his youth. Senor Hayes is proprietor of the Laboratory of Radio Standards in the City of the Angels, and in that capacity has assembled, wired, and otherwise built and constructed between forty-five and fifty "Maggies." Be it known that the term "Maggie" is affectionately applied by those so fortunate as to own one, to



E. K. Hayes

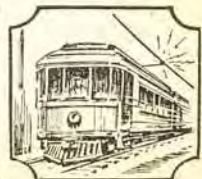
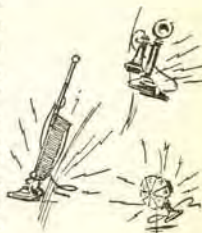
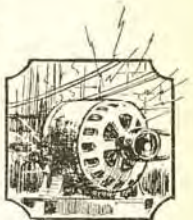
that very excellent radio receiver properly designated as Magnaformer 9-8, Commander-in-Chief of the Air.

Being fully aware of the very large amount of "grief" usually experienced in super-het construction, due to the non-uniformity of the intermediate transformers, and being personally acquainted with individuals who had gone partly "balmy" trying to make two exactly similar supers behave somewhat alike, we went out to Hayes' place of business with some little trepidation as to what we might find. In the normal order of things, a man who had built fifty supers, might be expected to have

(Continued on Page 74)

Don't let "man-made static" that originates in motors, streets cars, telephones and electrical appliances and which comes in over the lighting wires mar your programs with blare, squeal, fry and scratch.

Now you can have clearer AC reception. Plug in a Falck Claroceptor between wall socket and set. The Claroceptor grounds and thus blocks out of the set line interference noises and radio frequency disturbances. Selectivity and distance also are improved. No changes in set. Measures only  $3\frac{1}{2} \times 5\frac{1}{2} \times 2\frac{1}{2}$  inches. Tested, proved. Users enthusiastic. A product of pioneer radio equipment manufacturers; \$7.50 complete with cord and plug. At radio parts dealers.



**Advance Electric Co.**

1260 W. 2nd St.  
Los Angeles, Calif.

Jobbers & Dealers:  
write for proposition.

# ALL ELECTRIC

**NO** BATTERIES  
CHEMICALS OR LIQUIDS  
CRYSTAL DETECTORS  
FUSS, MUSS, OR TROUBLE

When you have one of the NEW AMERICAN ALL-ELECTRIC SETS installed in your home. Just snap on the switch for the best in radio reception. Single dial selector brings in the station you want to hear, and no other station will interfere with your favorite program. One small knob regulates the volume as you desire.

## Five Tube All Electric

Come, See,  
Hear This  
Wonderful Set  
and Don't  
Forget It's  
All Electric



Beautiful  
Console  
Models, Priced  
Slightly Higher  
May We  
Demonstrate?

Dealers  
Are  
Invited to  
Write for  
Details

**\$85**

Complete  
Installed.  
Air Column  
Speaker Used  
in This Set

*Don't Think of Radio Until You Have Seen and Heard  
Our New Set*

## AMERICAN RADIO CO.

108 East Eighth Street  
TUCKER 6028

Los Angeles, Calif.  
Open Evenings Until 8

















Mr. Radio Dealer:

# You Will Find the Best and Latest in Radio Merchandise Here

*Not Just Part of the Business but All of It*

**Adequate Wholesale Stock of Nationally Known Radio Products**

**SETS—PARTS—KITS—ACCESSORIES—RADIO FURNITURE—POWER DEVICES**

## Jensen Dynamic Speaker

Famous for lifelike reproduction, fidelity of tone and volume without distortion.

- Model D-44, 6 volt.....\$65.00
- Model D-45, 90 volt.....\$67.50
- Model D-44 AC.....\$75.00

Also can be had in manufactures' type without cabinet

## Sterling Tri-Power

AC power units consisting of Raytheon B and C Eliminator, AC Transformer, Adaptors and harness for converting six-tube DC sets to AC.

Price Complete, \$42.50

## California Power Transformer

Provides A, B and C current for the new CX350, 25-watt power amplifier tubes, with other suitable equipment. Power amplifiers for dynamic speakers, phonograph use or for public address systems can be constructed.

Price \$19.50

## MANUFACTURERS ATTENTION!

We carry a complete local stock of manufacturers' type items that you need.

**Save Time and Money  
SEE US**

- Filter Condensers, 1/4-8 mfd.
- Buffer Condensers
- Audio Transformers (all Ratios), Shielded or Bracket Mounting
- Four or Five Prong Sockets
- AC Transformers and Power Packs
- Speaker Units
- Cone Units
- Air Column Speakers
- Crystal Detectors
- Switches
- Arrow Knobs
- Rheostats
- Resistances
- Volume Controls
- By Pass Condensers

## Falck Claroceptors

This device eliminates 75% of the AC line noise and hum prevalent when using AC sets in certain locations. Clearer, better reception assured.

Price 7.50

## Utah New Type Cone

The latest Utah product; small, compact cone units suitable for mounting in any type of table cabinet or console.

Mfg. type XM, for baffle mounting...\$14.00

Boxed type XB.....\$16.00

Also new Utah units.

## Magnaformer Super Kit

Popular nine-tube set in kit form, everything ready to put together. Remarkable distance records have been made with the "Maggie."

Complete parts, including drilled and engraved front and sub panel.

Price \$129.75

WHOLESALE ONLY

# YALE RADIO ELECTRIC COMPANY

1111 Wall Street

Westmore 3351

Los Angeles, Calif.

*Note—We Solicit Business Only from Radio Dealers, Custom Set Builders, and Manufacturers*



**CHARLES H. GABRIEL, JR.**  
Announcer

# National Broadcasting Co., Inc.

## PACIFIC COAST NETWORK

**KFI KPO KGO**  
**KGW KOMO**  
**KFOA KHQ**

Charles H. Gabriel, Jr.  
Program Director  
Jennings Pierce  
Chief Announcer

Creek was the Sunday afternoon rendezvous of the German citizens.

Broadcast over KHQ, KOMO and KGO.

8:00 p. m.—Eveready Salon Orchestra  
Broadcast over KHQ, KOMO, KFOA,  
KGW, KGO, KPO and KFI.

8:30 p. m.—Don Amaizo will relate another one of his fascinating tales  
Broadcast over KHQ, KOMO, KFOA,  
KGW, KGO, KPO and KFI.

### WEDNESDAY, APRIL 18

6:30 p. m.—Musical Fruit Cocktail by the Sunkist Melodists.  
Broadcast over KHQ, KPO, KOMO,  
KFOA, KGO, KGW and KFI.

8:00 p. m.—"Jack and Ethyl, the Motor Mates," will tell about their honeymoon tour which is taking them throughout Washington, Oregon and California.  
Broadcast over KOMO, KFOA, KGW,  
KGO, KPO and KFI.

8:30 p. m.—Royal Ambassadors will present a gala program  
Broadcast over KHQ, KOMO, KFOA,  
KGW, KGO, KPO and KFI.

### THURSDAY, APRIL 19

8:00 p. m.—Calpet Hour presenting "The Gondoliers," Gilbert & Sullivan's comic opera.  
Broadcast over KHQ, KOMO, KFOA,  
KGW, KGO, KPO and KFI.

9:00 p. m.—Dodge Brothers Presentation.  
Broadcast over KHQ, KOMO, KFOA,  
KGW, KGO, KPO and KFI.

9:30 p. m.—Moon Magic weaves its usual magic spell under the limpid rays of the moon.  
Broadcast over KHQ, KOMO, KFOA, KGO.

10:00 p. m.—Los Angeles studio program offers rare entertainment. Eva Olivotti, prima donna, will sing a group of Italian folk songs. James Burroughs, tenor.  
Broadcast over KOMO, KFOA, KGW, KGO and KFI.

### FRIDAY, APRIL 20

8:00 p. m.—Wrigley Review presenting the weekly gala parade of Wrigley Sparmen.  
Broadcast over KHQ, KOMO, KFOA,  
KGW, KGO, KPO and KFI.

9:00 p. m.—White Rock concert with Gail Taylor, soprano.  
Broadcast over KOMO, KFOA, KGW,  
KGO, KPO and KFI.

9:30 p. m.—Retold Tales, "Conscience in Art," by O. Henry, will be presented by the National Players under direction of Wilda Wilson Church.  
Broadcast over KOMO, KHQ, KFOA,  
KGW and KGO.

### SATURDAY, APRIL 21

8:00 p. m.—RCA Hour presenting its program of music and a talk by Henry M. Hyde, who will talk on "Jupiter, the Giant World." The orchestra will follow.  
Broadcast over KHQ, KOMO, KFOA,  
KGW, KGO, KPO and KFI.

9:00 p. m.—Philco Hour presenting a program of diversified musical numbers.  
Broadcast over KHQ, KOMO, KFOA,  
KGW, KGO, KPO and KFI.

### DAILY

9:00 p. m.—Time broadcast.

10:00 p. m.—The Trocaderans' Dance Orchestral Monday.

### SUNDAY, APRIL 15

10:00 p. m.—Gold Strand Group in a program combining classic melodies with more modern harmonies. Dorothy Talbot, soprano, and Gwynfi Jones, tenor.  
Broadcast over KHQ, KOMO, KFOA, KGO,  
KPO and KFI.

3:00 p. m.—Sunday afternoon concert.  
Broadcast over KHQ, KOMO, KGW, KGO  
and KFI.

4:30 p. m.—Great Moments in History will tell the colorful story of Thomas Jefferson, beginning when he was 31 years old.  
Broadcast over KHQ, KOMO, KGW and  
KFI.

6:30 p. m.—Standard Symphony Hour with Nathan Abas directing.  
Broadcast over KHQ, KOMO, KFOA, KGW,  
KGO, KPO, and KFI.

9:00 p. m.—Atwater Kent program will present a small but important group of masterpieces.  
Broadcast over KHQ, KOMO, KFOA, KGW,  
KGO, KPO and KFI.

### MONDAY, APRIL 16

8:00 p. m.—Rudy Seiger's Shell Symphonists  
Broadcast over KHQ, KOMO, KFOA,  
KGW, KGO, KPO and KFI.

9:00 p. m.—The Rounders will open their program with the big song from "Hit the Deck," "Hallelujah."  
Broadcast over KHQ, KOMO, KGW, KGO  
and KPO.

9:30 p. m.—Fiske "Time-to-Retire" Boys singing an unusually entertaining group of numbers.  
Broadcast over KHQ, KOMO, KFOA,  
KGW, KGO, KPO and KFI.

10:00 p. m.—Broadways and Boulevards in a program which has as its theme "nut picking."  
Broadcast over KOMO, KFOA and KGO.

### TUESDAY, APRIL 17

10:30 a. m.—Johnson Travelogue. The Johnson Twins will fly over Austria today and give their interesting account of what they see.  
Broadcast over KGW, KGO, KPO and KFI.

11:00 a. m.—Royal Baking Powder Menu Hints, with Ruth Baker.  
Broadcast over KHQ, KOMO, KFOA,  
KGW, KGO, KPO and KFI.

6:30 p. m.—Memory Lane presents Indianapolis as it was 20 years ago, when Kissel's Garden on the banks of Fall

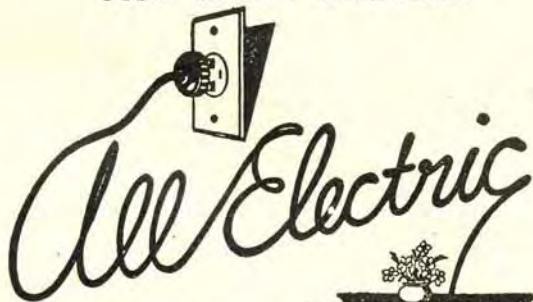
**Golden Bear** AIR COLUMN **SPEAKER**

12 Sizes — WE. 2712  
1929 Los Angeles St., L. A.

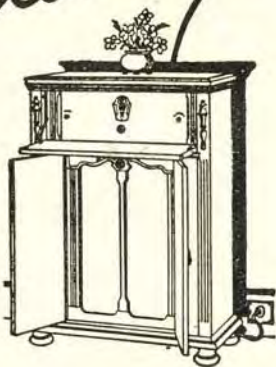
# SPARTON RADIO

*"The Pathfinder of the Air"*

**THE TIME TESTED**



Not new! Sparton *has been* a true electric radio right from the start. Naturally you get something different and better; a radio instrument of wondrous tone that shows the results of years of refinement.



**A DEMONSTRATION WILL CONVINCING YOU**

Usual Birch-Smith Terms

**Birch-Smith Furniture Co**  
737-41 Hill St. Near 8<sup>th</sup>

Los Angeles, Calif.

Phone TR. 4121



ROBERT HURD

# KFI

## Los Angeles, Calif.—640 Kc.

5000 WATTS—468.5 METERS

Radio Central Super-Station of Earl C. Anthony, Inc.

1000 S. Hope. Phone WE, 0331. After 5 P. M., WE, 0337

## DAILY EXCEPT SUNDAY—

- 11:15 a. m.—Sylvia's Happy Hour (except Tues., Thurs., Sat.), Studio Program (except Mon. and Tues.).  
 12:10 p. m.—Federal and State Market Reports, except Thursday.  
 12:15 p. m.—U. C. and U. S. Dept. of Agri. Talks, except Thursday.  
 5:00 p. m.—Big Brother Bob (except Saturday).  
 6:00 p. m.—White King Soap Male Quartet Dinner Hour, ex. Wed.  
 10:00 p. m.—N. B. C. Dance Music over P. C. N., except Mon., Sat.

- SUNDAY, APRIL 15**  
 10:00 a. m.—Church Federation Services.  
 1:00 p. m.—N. B. C.—American Fabric Co.  
 3:00 p. m.—Musical Program.  
 4:30 p. m.—Great Moments of History.  
 5:00 p. m.—Glen Edmunds Collegians—Edna Cook, soloist.  
 6:00 p. m.—Pasquin and Harris.  
 6:30 p. m.—N. B. C.—Standard Oil Company.  
 7:30 p. m.—Father Ricard's Weather Forecast.  
 7:32 p. m.—Varieties—Gene Johnston.  
 8:00 p. m.—Aeolian Recital, Alex Reilly.  
 9:00 p. m.—N. B. C.—Atwater Kent Co.  
 9:30 p. m.—Nellie Callender Mills, violinist.  
 10:00 p. m.—Packard Six Orchestra.

- MONDAY, APRIL 16**  
 12:00 noon—David Leavitt—Ballads.  
 12:45 p. m.—Jacob Markowitz, violinist.  
 1:00 p. m.—Melba Melsing, Spanish songs.  
 1:15 p. m.—Talks on Traffic Violations.  
 2:00 p. m.—Mac Lask, ballads.  
 2:15 p. m.—Oscar Grofenstein, zither.  
 2:30 p. m.—Edla Laurence, psychologist.  
 3:00 p. m.—Virginia McCoy, contralto.  
 3:45 p. m.—Walter W. Strong.  
 4:00 p. m.—L. A. Fire Dept. Orch.—Helen Guest.

- 5:30 p. m.—Mr. Dunlap, Board of Education.  
 5:45 p. m.—Senator Geo. W. Wright.  
 7:00 p. m.—KFI Symphonette—Virginia Flohri.  
 8:00 p. m.—N. B. C.—Shell Program.  
 9:30 p. m.—N. B. C.—Fisk Tire Co. Prog.

- TUESDAY, APRIL 17**  
 10:30 a. m.—N. B. C.—Johnson Washer Co.  
 11:00 a. m.—N. B. C.—Royal Baking Powder  
 11:15 a. m.—Georgia O. George.  
 11:45 a. m.—Modes & Mannequins, by "Ivar."  
 1:00 p. m.—Cliff Howell and Alan Raines.  
 1:30 p. m.—Beverly Trio.  
 2:30 p. m.—Mary Bell Chapman, ballads.  
 3:00 p. m.—Marie Lohkar, contralto.  
 3:30 p. m.—Betty Thompson, contralto.  
 4:00 p. m.—U. S. C. Course in Music Appreciation.

- 4:30 p. m.—Dragon Hawaiian Trio.  
 5:30 p. m.—Prof. Carl S. Knopf.  
 5:50 p. m.—Louis DeJean, Aviation Talks.  
 7:00 p. m.—Nick Harris; Richard Skinner.  
 7:30 p. m.—Wm. MacDougall, comedian.  
 8:00 p. m.—N. B. C.—National Carbon Co.  
 8:30 p. m.—N. B. C.—American Maize.  
 9:00 p. m.—KFI Symphonette.  
 10:45 p. m.—Psychic Stories, D'Arcy Corrigan.

- WEDNESDAY, APRIL 18**  
 12:30 p. m.—Pasquin and Harris.  
 12:45 p. m.—Marian Boogar, ballads.  
 1:00 p. m.—LaMont Stetzer, baritone.  
 1:15 p. m.—Talks on Traffic Violations.  
 1:30 p. m.—L. A. Police Quartette.  
 2:00 p. m.—Margaret Meatheringham.

- 2:30 p. m.—Phyllis Campbell, contralto.  
 3:30 p. m.—Cliff Gunning, tenor.  
 4:30 p. m.—Gent Brandy, Hollywood Boys.  
 5:30 p. m.—White King Soap Co.  
 6:30 p. m.—N. B. C.—Calif. Fruit Growers.  
 7:00 p. m.—Georgia O. George.  
 7:30 p. m.—Henry Starr.  
 8:00 p. m.—N. B. C.—Associated Oil Co.  
 8:30 p. m.—N. B. C.—Royal Baking Powder.  
 9:00 p. m.—Packard Concert Orchestra.

- THURSDAY, APRIL 19**  
 12:30 p. m.—Albers Bros. Milling Co.  
 1:00 p. m.—Studio Program.  
 1:15 p. m.—Mme. Irwin Kellogg Talk.  
 1:25 p. m.—Talks on Traffic Violations.  
 1:30 p. m.—Helen Pacino, ballads.  
 2:00 p. m.—Sebastian's Cotton Club Orch.  
 3:00 p. m.—Shirley Mirkin, concert pianist.  
 3:30 p. m.—Norma West, soprano.  
 4:00 p. m.—U. S. C. Course in Music Appre.  
 4:30 p. m.—LeRoy Harron & Roy Heilgrig.  
 4:45 p. m.—Dr. H. Edward Myers.  
 5:30 p. m.—Griffith Jones—Attorney.  
 5:50 p. m.—Federal Business Assoc.  
 7:00 p. m.—KFI Symphonette.  
 8:00 p. m.—N. B. C.—Calif. Pet. Corp.  
 9:00 p. m.—N. B. C.—Dodge Bros. Program.  
 9:30 p. m.—Violin Recital by Purcell Mayer.  
 10:00 p. m.—N. B. C.—L. A. Studio.

- FRIDAY, APRIL 20**  
 12:25 p. m.—Franklin L. Graves.  
 12:45 p. m.—Alma Pratt Kohl, pianist.  
 1:00 p. m.—Lois Crawford.  
 1:30 p. m.—Dan Conoway, tenor.  
 2:00 p. m.—Marian Cavanaugh, pianist.  
 2:30 p. m.—Douglas Hodson, tenor.  
 3:00 p. m.—Dolly McDonald & Ester Walker.  
 3:30 p. m.—Burns Phillips, Marimbaphone.  
 4:00 p. m.—L. A. Fire Dept. Orch.—Helen Guest.

- 5:30 p. m.—Southern Syncopaters.  
 7:00 p. m.—Paul Roberts and his Orch.  
 8:00 p. m.—N. B. C.—Wrigley Program.  
 8:30 p. m.—N. B. C.—White Rock Min. Co.  
 9:00 p. m.—Packard Concert Orchestra.

- SATURDAY, APRIL 21**  
 12:30 p. m.—David Leavitt, ballads.  
 1:00 p. m.—Winona Ellis and Uke.  
 1:30 p. m.—Allen Bacon and his Collegians.  
 2:00 p. m.—Edward Lynn on Literature.  
 2:30 p. m.—Clarice Russell.  
 3:00 p. m.—Jean Lamph, contralto.  
 3:30 p. m.—Si Darling Arkansas Dance Orch.  
 4:00 p. m.—Faculty Four Male Quartette.  
 4:30 p. m.—Anna May Cirian, violinist.  
 5:00 p. m.—Francis Sullivan.  
 5:30 p. m.—Norma Byington, soprano.  
 7:00 p. m.—KFI Symphonette.  
 8:00 p. m.—N. B. C.—R. C. A. Hour.  
 9:00 p. m.—N. B. C.—Phila. Storage Bat. Co.  
 10:00 p. m.—Packard Concert Orchestra.  
 11:00 p. m.—KFI Midnight Frolic.

\*See Page 42 for detailed program of National Broadcasting Co.

# GILFILLAN

SALES & SERVICE—HEmpstead 5590  
 139 N. Larchmont  
 Open Evenings

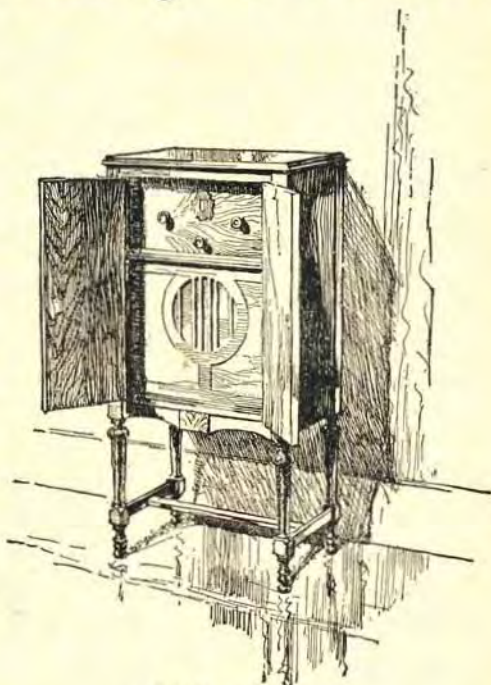
Newest Features  
 Completely Equipped  
 Light Socket Operation  
 Moderately Priced

These new Gilfillan Models 55 and 65, are operated from the house circuit. The cabinets are walnut with a beautiful two-toned finish and very handsomely designed.

Gilfillan Model 55 complete with power supply, tubes and latest improved Rola Speaker. AC operated. \$247.50.



Gilfillan Model 65 complete with power supply, tubes and Jensen Dynamic Power Speaker. AC operated. \$282.50



*Gilfillan Model 55*

**GILFILLAN RADIO**  
 No Batteries — ONE DIAL — Glorious Tone  
 See New Models at Gilfillan Dealers

*Distributors:*

Southern California (except San Diego County)

GILFILLAN BROS., INC., Los Angeles

San Diego County—MOTOR HARDWARE & EQUIPMENT CO., San Diego

Arizona—NIELSEN RADIO & SPORTING GOODS CO., Phoenix



E. K. BARNES  
Day-Time Director

# KHJ

## Los Angeles, Calif.—750 Kc.

500 WATTS—399.5 METERS

Times Bldg., First and Broadway. Owned and Operated by Don Lee, Calif. Dist. for Cadillac and LaSalle. Phone MET. 0700

E. K. Barnes  
Day-Time Director

Glen R. Dolberg  
Night-Time Director

C. M. C. Raymond  
Commercial Director

Ernest G. Underwood  
Technical Director

- 4:15 p. m.—M. S. Benesh, Sheriff's Office.  
4:30 p. m.—Talk on "Child Psychology."  
5:00 p. m.—Pacific States Savings & Loan Company Program.  
7:00 p. m.—KHJ Symphonic Band.  
8:00 p. m.—KHJ Concert Orchestra.  
9:00 p. m.—Sun Dodgers.

### TUESDAY, APRIL 17

- 4:00 p. m.—Dr. Frank McCoy's talk on "Health."  
4:15 p. m.—Speaker.  
4:30 p. m.—"Jewish Literature and History."  
7:00 p. m.—L. A. Police Dept.  
7:30 p. m.—Winslow B. Felix Chevrolet Orch.  
8:00 p. m.—Maxwell House Coffee Orchestra.  
9:00 p. m.—KHJ Mixed Quartet Orchestra.

### WEDNESDAY, APRIL 18

- 2:30 p. m.—L. A. Public Library.  
4:00 p. m.—Fred C. McNabb, Garden Talk.  
7:00 p. m.—KHJ Symphonic Band.  
8:00 p. m.—Pacific States Savings and Loan Company Program.  
9:00 p. m.—KHJ Concert Orchestra.

### THURSDAY, APRIL 19

- 2:30 p. m.—KHJ Concert soloists.  
4:00 p. m.—Dr. Phillip M. Lovell.  
4:30 p. m.—Florence Dobinson.  
7:00 p. m.—Cadillac-La Salle Concert Eight.  
8:00 p. m.—Cartoonist's Hour, Robert Wild-hack.  
9:00 p. m.—KHJ "Orioles" and orchestra.

### FRIDAY, APRIL 20

- 2:30 p. m.—KHJ Concert soloists.  
4:00 p. m.—"Stories of American History."  
4:30 p. m.—Council of International Relations.  
5:45 p. m.—Auto Club of So. California.  
7:00 p. m.—Elvia Allman's Surprise Package.  
8:00 p. m.—KHJ Symphonic Band.  
9:00 p. m.—"Echoes of the Rialto" and KHJ Mixed Quartet.

### SATURDAY, APRIL 21

- 8:00 a. m.—Students' Music Hour.  
2:30 p. m.—Art Pabst and his banjo.  
4:00 p. m.—Rev. Albert Anderson, Talk on China.  
4:30 p. m.—L. A. Playground Recreational Department  
7:00 p. m.—KHJ Movie Club.  
8:00 p. m.—Continuity Program.  
9:00 p. m.—KHJ Concert Orchestra.  
12:00 midnight—KHJ Merry Makers—Time Signals.

### DAILY EXCEPT SUNDAY

- 8:00 a. m.—Sperry Flour Reveille Hour (ex. Sat.).  
9:00 a. m.—"Have you ever heard?"  
9:30 a. m.—The Story Man and his Air Castle.  
10:00 a. m.—A half hour at home.  
10:30 a. m.—Old-Timers' String Quartet, except Wednesday and Saturday.  
12:00 noon—Earl Burtnett's Los Angeles Biltmore Hotel Orchestra.  
12:30 p. m.—L. A. Times World Wide News.  
1:30 p. m.—Charlie Wellman's program.  
2:00 p. m.—Celeste Ryus, "Musical Appreciation" (ex. Mon.).  
3:00 p. m.—Matinee Melody Masters.  
5:00 p. m.—Sunset musical (except Mon.).  
6:00 p. m.—Nightly Doings.  
6:15 p. m.—Fitzgerald's Orthophonic and Ampico Concert (ex. Thurs.).  
6:45 p. m.—L. A. Times World Wide News.  
10:00 p. m.—Time signals, courtesy So. Pac.  
10:00 p. m.—Earl Burtnett's Biltmore Orch. (ex. Sat.).

### SUNDAY, APRIL 15

- 9:30 a. m.—KHJ Concert Ensemble.  
10:30 a. m.—First M. E. Church.  
12:30 p. m.—Half hour of late records.  
1:00 p. m.—The Viennese Quintet  
4:00 p. m.—Concert Ensemble and soloist.  
5:00 p. m.—Twilight Musicale.  
6:00 p. m.—Nightly Doings.  
6:15 p. m.—Orthophonic and Knabe Ampico Program.  
6:45 p. m.—World Wide News.  
7:00 p. m.—First M. E. Church.  
8:00 p. m.—KHJ Concert Orchestra.  
9:00 p. m.—KHJ Concert Ensemble.  
10:00 p. m.—Flamingo Sextet.  
11:00 p. m.—Dance Orch. and Time Signals.

### MONDAY, APRIL 16

- 2:00 p. m.—Elvia Allman's Surprise pkg.  
4:00 p. m.—C. W. H. Smith, Traffic Dept., Western Air Express.

**WALTER BIDDICK — Phone WEStmore 9137**  
"A Complete Radio Program and Announcement Service"

**Golden Bear** AIR COLUMN  
**SPEAKER**

Beware of Imitations  
**WEStmore 2712**



Announcing  
 The TROJAN Console  
 (All Electric)

Illuminated Single  
 Dial Control

Operating 7 Tubes  
 (Including 125 Mill Raytheon)

Mahogany or Brown  
 Mahogany Finish

6-foot Air Column  
 Speaker

NO [ Batteries  
 Liquids  
 Acids  
 Crystals



SOLID MAHOGANY

*Simplicity—Selectivity—Natural Tone*  
*Complete with Tubes and Speaker*

\$135<sup>00</sup>



AXRIDGE 9852

5006 SO. BROADWAY



**NAYLOR ROGERS**  
Manager

# KNX Hollywood, Calif.—890 Kc.

500 Watts—337 Meters—Los Angeles Evening Express  
Paul G. Hoffman's Studebaker Bldg., 6116 Hollywood Blvd.

Phone HEMPstead 4101

**Naylor Rogers**

Manager and Program

Director

**Glen Rice**

Assistant Manager

**N. D. Garver**

Technical Engineer

"The Voice of Hollywood"

- 4:30 p. m.—Little Jean and the Town Crier.  
7:00 p. m.—Carthay Circle Theater program.  
7:30 p. m.—One-act play, directed by Georgia Fifield, through the courtesy of the Overell Furniture Company.  
8:00 p. m.—Log Cabin Bread Co. courtesy program.  
9:00 p. m.—Feature program.  
9:30 p. m.—15 minutes with Gene Leonard.  
9:45 p. m.—Feature program.

TUESDAY, APRIL 17

- 11:00 a. m.—French lessons.  
4:00 p. m.—Little Joyce Coad, movie actress.  
7:00 p. m.—Grauman's Chinese Theater.  
7:30 p. m.—Georgia O. George.  
8:00 p. m.—"Tom and his mule, Hercules."  
9:00 p. m.—Old Mission Laboratories of Pasadena.  
9:30 p. m.—Feature program.

WEDNESDAY, APRIL 18

- 12:45 p. m.—Charles Weeks' courtesy prog.  
4:00 p. m.—Garden talk.  
7:00 p. m.—Players' Club, conducted by Wedgwood Nowell.  
7:30 p. m.—Annandale Estates courtesy prog.  
8:00 p. m.—"Bert Butterworth and his Air-daies."  
9:00 p. m.—Charles Weeks' courtesy prog.

THURSDAY, APRIL 19

- 11:00 a. m.—French lessons.  
4:15 p. m.—Louise Johnson, reading horoscopes.  
8:00 p. m.—Carthay Circle Theater.  
8:00 p. m.—Calmon Luboviski, master violinist; Claire Mellonino, pianist.  
9:0 p. m.—Feature program.  
9:30 p. m.—15 minutes with Gene Leonard.  
9:45 p. m.—Feature program.

FRIDAY, APRIL 20

- 10:30 a. m.—Georgia O. George.  
2:30 p. m.—L. A. District Federation of Women's Clubs.  
7:00 p. m.—Georgia O. George courtesy prog.  
7:30 p. m.—Star Furn. Company.  
8:00 p. m.—Royal Order of Optimistic Dons.  
9:00 p. m.—Courtesy program.  
9:45 p. m.—The main event from the Hollywood Stadium.

SATURDAY, APRIL 21

- 6:25 p. m.—Announcement of services Los Angeles Churches.  
7:00 p. m.—Program from the Carthay Circle Theater.  
7:30 p. m.—Playgoers' Club, conducted by Wedgwood Nowell.  
8:00 p. m.—Feature program.  
8:30 p. m.—Mr. and Mrs. Radio Skit—acted by Georgia Fifield and E. J. Albright.  
9:00 p. m.—Feature program.  
12:00. midnight—The Midnight Express.

## DAILY EXCEPT SUNDAY

- 6:45 a. m.—"Earlybirds" exercises, given by Dr. P. M. Seixas.  
7:15 a. m.—"Pep and Vigor" exercises, given by P. M. Seixas.  
7:45 a. m.—"Home Folks" exercises, given by D. P. M. Seixas.  
8:00 p. m.—Inspirational talk and morning prayer.  
8:55 a. m.—Time Signals from Washington, D. C., followed by birthday notices.  
9:00 a. m.—Radio Shopping News, conducted by Carey Preston Rittmeister.  
10:00 a. m.—Town Crier of the Day's morning message.  
10:30 a. m.—Kate Brew Vaughn, director of Household Economics Department of the Evening Express (except Fri. and Sat.).  
12:00 noon—Musical program.  
12:30 p. m.—W. F. Alder, travelogue.  
1:30 p. m.—The Bookworm.  
2:00 p. m.—Program given through the courtesy of the Los Angeles Express Classified Advertising Department.  
2:30 p. m.—Musical program.  
3:00 p. m.—C. P. R.'s musical program.  
4:25 p. m.—Stock market reports.  
5:45 p. m.—Town Crier's Timely Amusement Tips.  
6:00 p. m.—Paul Finstein's KNX String Quintet.  
6:30 p. m.—Josef Rosenfeld's Concert Orchestra from the Ambassador Hotel.

## SUNDAY, APRIL 15

- 10:00 a. m.—First Presbyterian Church.  
2:00 p. m.—City Park Board musical.  
4:00 p. m.—Roberts Golden State Band.  
5:15 p. m.—All Souls Church.  
6:00 p. m.—Talk by Ernest Holmes.  
6:30 p. m.—Hollywood Unitarian Church.  
7:00 p. m.—First Presbyterian Church.  
8:00 p. m.—Josef Rosenfeld's Concert Orchestra from the Ambassador Hotel.  
9:00 p. m.—Calmon Luboviski, master violinist; Claire Mellonino, pianist.

## MONDAY, APRIL 16

- 11:00 a. m.—Georgia O. George courtesy prog.  
2:30 p. m.—"Human Nature," William Benton.

## FERBEND "B" ELIMINATORS

90 Volt, \$13.50

"The Last Word in 'B' Eliminators"

180 Volt, \$20.50

NO LIQUIDS—NO ACIDS—NO HUM

Authorized Steinite Derler

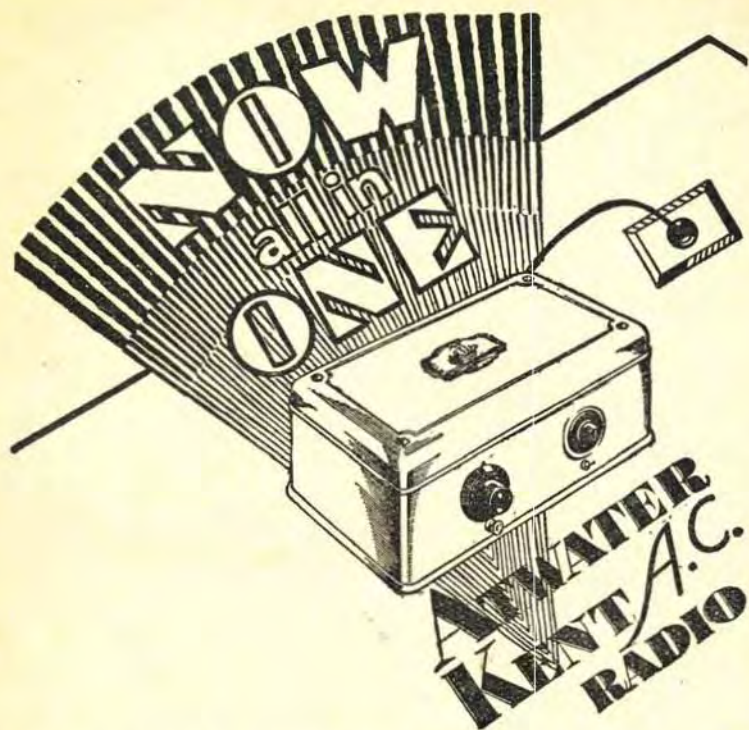
9TH AND UNION RADIO SHOP

1605 West 9th St.

Dunkirk 4091

Los Angeles

(Equipped to take care of all service work.)



Make it a point to see the NEW Atwater Kent, A-C operated, price only \$92 without tubes and speaker, or \$144.50 complete. Aerial will be erected for a nominal charge. This compact little radio may be just what you have been looking for. Sold for a small down payment, the balance over a convenient term.

*See your nearest dealer*

**RAY THOMAS INC.**  
*Atwater Kent Distributor*

**1248 S. Hope St. WE 6334**  
**LOS ANGELES**



**LESLIE ADAMS**  
Program Director and  
Night Announcer

# KMTR

Dean Metcalf  
Day Announcer

Forbes Van Why  
Chief Engineer

Tom Mitchell  
Business Manager

Loren Powell  
Musical Director

Leslie Adams  
Program Director and  
Night Announcer

## Hollywood, Calif.—580 Kc.

500 WATTS—516.9 METERS

KMTR RADIO STATION, 1028 N. Highland Ave. HOLLY 3026

9:30 p. m.—Musical Program.

### TUESDAY, APRIL 17

- 10:00 a. m.—Georgia O. George.  
1:30 p. m.—KMTR Radio Press Agent Hour.  
2:30 p. m.—L. A. Police Quartet.  
3:00 p. m.—Parke and Melford Serogen.  
7:00 p. m.—Melba Allen, vocalist & pianist.  
7:30 p. m.—Overell's Furniture Company,  
presenting Overell KMTR Players in a one-act  
play directed by Edward Murphey.  
8:00 p. m.—KMTR Light Operatic program,  
featuring Loren Powell's Little Symphony  
and Eva Olivotti, soprano.  
9:00 p. m.—Musical Program.

### WEDNESDAY, APRIL 18

- 12:00 noon—Mae Day Beauty Salon.  
1:45 p. m.—Hollywood Chamber of Commerce  
program.  
4:00 p. m.—Carthay Circle Theater artists.  
7:00 p. m.—The Informative Period, by Hugh  
Otto Knovit.  
7:30 p. m.—Fraternal Brotherhood program.  
8:00 p. m.—So. Cal. Edison Co. Symphonic  
Orchestra and Jean Chown, contralto.  
9:00 p. m.—June Pursell and Ron Wilson.

### THURSDAY, APRIL 19

- 1:30 p. m.—Parke and Melford Serogen  
courtesy.  
4:15 p. m.—"Marriage," by Walter Brown  
Murray.  
7:00 p. m.—Musical program.  
9:00 p. m.—Courtesy program.

### FRIDAY, APRIL 20

- 8:30 a. m.—Gordon Whitnall.  
1:30 p. m.—Parke and Melford Serogen.  
3:00 p. m.—Artists from "Excess Baggage."  
5:30 p. m.—Talk by Eugene Biscaulez of the  
Sheriff's Office.  
7:00 p. m.—The Girl Friends Trio and others.  
9:00 p. m.—Winnifred Hooke, concert pianist.  
9:30 p. m.—Georgia Williams, violinist; Lil-  
yan Ariel, pianist.

### SATURDAY, APRIL 21

- 7:00 p. m.—Songs by Tom Mitchell, baritone.  
7:30 p. m.—Musical program.  
9:00 p. m.—Eva Olivotti, soprano, and other  
artists.

### DAILY EXCEPT SUNDAY

- 7:00 a. m.—Setting-up exercises, by Prof.  
Barclay L. Severns.  
7:30 a. m.—Louise Howatt's Hour of Hap-  
piness.  
8:57 a. m.—Time signals.  
10:00 a. m.—KMTR Radio Press Agent Hour,  
short business announcements and musi-  
cal selections (except Tues.).  
11:00 a. m.—Al Wellman's Luncheon bulletin.  
12:00 noon—Luncheon program.  
12:30 p. m.—Walter Biddick's So. Cal. prog.  
4:30 p. m.—Brother Tom's Smiling Circle.  
5:00 p. m.—Musical Program.  
5:45 p. m.—Timely Topics featuring amuse-  
ment and cafe announcements.  
6:00 p. m.—KMTR Concert Orchestra.  
8:00 p. m.—Loren Powell's Little Symphony  
and assisting artists.  
10:00 p. m.—Miller's Cafe Lafayette Dance  
Orchestra.

### SUNDAY, APRIL 15

- 7:00 p. m.—June Pursell and Ron Wilson.  
8:00 p. m.—Loren Powell's Little Symphony;  
Virginia Flohri, coloratura soprano.

### MONDAY, APRIL 16

- 8:30 a. m.—Dr. Paul J. Dorosh—"Diet."  
1:30 p. m.—Franklin L. Graves—"Business  
Efficiency."  
7:00 p. m.—Talk by Dr. Mars Baumgardt.  
7:30 p. m.—Henry Starr as the "Pie Man."  
8:00 p. m.—City School program, presenting  
Symphonic artists and soloists.  
9:00 p. m.—The Melody Trio and others.

## Your Dealer

## IN RADIO

Is part of your community, he is in business  
to serve you, and his interests are your in-  
terests—consult your dealer concerning Radio.

RADIO<sup>OWL</sup>WL

2269 E. 51st  
DE. 9866

**Golden Bear** AIR COLUMN  
**SPEAKER**

12 Sizes — WE. 2712  
1929 Los Angeles St., L. A.

# KOLSTER Sales and Service

H. D. Hatfield & Son — 1762 N. Vermont Ave.

Phone OLympia 5220

Established 1924

Open Evenings

# LANSING SPEAKERS



Model C — \$42.50

*“Surprisingly Better”*

**N**EVER, in the history of loud speaker development has any improvement so startled and amazed the Radio Public as the sensational new Lansing, Self-contained Power Speaker. This reproducer, selling for little more than the average speaker, will prove a revelation to the radio fan who has been accustomed to the choking, rattling and blasting of the ordinary speaker.

Without over emphasis at either end of the scale, the Lansing reproduces with amazing fidelity and exceptional volume the lowest bass to the highest treble.

A comparative demonstration against any speaker on the market, regardless of price, will convince even the most skeptical of Lansing superiority.

If you are purchasing a console set, insist that it contain a factory model Lansing Speaker and assure yourself of the best the market affords.

*Manufactured by:*

**LANSING MANUFACTURING CO.**

Los Angeles, California

Sales Agents: **FRANK A. EMMET SALES CO.**  
6626 South McKinley Ave., Los Angeles, Calif.

**TELEPHONE YOrk 8646**



GERALD L. KING  
Manager

# KFWB Hollywood, Calif.—830 Kc.

1000 WATTS—361.2 METERS  
WARNER BROS. MOTION PICTURE STUDIOS  
Warner Brothers' Theater, 6425 Hollywood Boulevard

Phone GL. 9461

Gerald L. King  
Manager  
Wm. Ray  
Assistant Manager  
Florence Israel  
Program Arranger  
Leslie Howitt  
Chief Technician

## DAILY EXCEPT SUNDAY

- 9:00 a. m.—Spanish program, except Wed.  
9:30 a. m.—Characteristic hour (ex. Wednesday).  
10:30 a. m.—Musical program, except Wed.  
11:00 a. m.—Housekeepers Chat by Aunt Sammy (ex. Wed. and Sat.).  
11:30 a. m.—KFWB Shopping Directory.  
12:30 p. m.—Courtesy program.  
1:00 p. m.—Air Journal.  
2:15 p. m.—Pacific Coast League baseball games (ex. Mon.).  
5:15 p. m.—Radio Review.  
5:45 p. m.—Town Tattler.  
6:00 p. m.—Ray Bailey's Quintet.  
6:30 p. m.—Harry Jackson and entertainers from Pig'n Whistle, Hollywood.  
7:30 p. m.—Musical program.  
7:50 p. m.—Daily News (ex. Sat.).  
10:00 p. m.—Cinderella Roof Orch., ex. Sat.

## SUNDAY, APRIL 15

- 10:00 a. m.—Courtesy Program.  
11:00 a. m.—John Wright, the Right Tailor.  
2:00 p. m.—Musical Program.  
2:15 p. m.—P. C. League Baseball Game.  
7:00 p. m.—Music.  
7:20 p. m.—Harry Jackson and entertainers.  
7:50 p. m.—Daily News.  
8:00 p. m.—Light Opera Hour, courtesy of Overell Furniture Co.  
9:00 p. m.—Daily News Items.  
9:10 p. m.—Harry G. Keiper's Movieland Orchestra.

## MONDAY, APRIL 16

- 2:15 p. m.—Ralph Markey, from the Cinderella Roof Ballroom.

- 4:00 p. m.—Ten Colored Melody Lads.  
5:00 p. m.—Radio Travel Tales.  
7:00 p. m.—Perfection Cook Ware Corp.  
8:00 p. m.—June Parker, blues, and Don Warner and his studio boys.  
9:00 p. m.—David Percy, baritone, and Cyril Godwin's Concert Trio.

## TUESDAY, APRIL 17

- 5:00 p. m.—Courtesy Program.  
7:00 p. m.—KFWB String Quintet.  
8:00 p. m.—Helen Davis, soprano; LeGrand Concert Trio.  
9:00 p. m.—Sleepy Time Hour.

## WEDNESDAY, APRIL 18

- 8:00 a. m.—The Breakfast Club.  
9:30 a. m.—Dr. Paul J. Dorosh, diet specialist.  
9:45 a. m.—Spanish Program.  
10:15 a. m.—Characteristic Hour.  
11:15 a. m.—Housekeepers' Chat, by Aunt Sammy.  
5:00 p. m.—Radio Travel Tales.  
7:00 p. m.—Address.  
7:15 p. m.—Ray Bailey's Quintet.  
8:00 p. m.—Don and Frank, songs; Charlotte De Lovelace, blues; KFWB String Quartet.  
9:00 p. m.—Variety Hour.  
1:30 p. m.—The L. A. Police Dept. Quartet and traffic announcements.  
5:00 p. m.—Courtesy Program.  
7:00 p. m.—KFWB Concert Quintet.  
8:00 p. m.—Arlene Jackson, songs; Dan Santos' Hawaiian Trio.  
9:00 p. m.—Vernon Rickard, tenor; Leon Belasky's European Quartet.

## FRIDAY, APRIL 20

- 4:30 p. m.—A. T. Rainey, psychic.  
5:00 p. m.—Radio Travel Tales.  
7:00 p. m.—KFWB String Quartet.  
8:00 p. m.—Helen Pacino, songs; Don Warner and his studio boys.  
9:00 p. m.—Robert Wynton; KFWB Concert Quintet.

## SATURDAY, APRIL 21

- 7:00 p. m.—A one-act play by Playshop Players.  
8:00 p. m.—The MonaMotor Oilers and soloists.  
9:00 p. m.—Ralph Markey and his Musical Keys.

6:30-7 NITELY **ARDEN**  **MUSICAL PROGRAM KFWB**

**Golden Bear**  **AIR COLUMN SPEAKER**

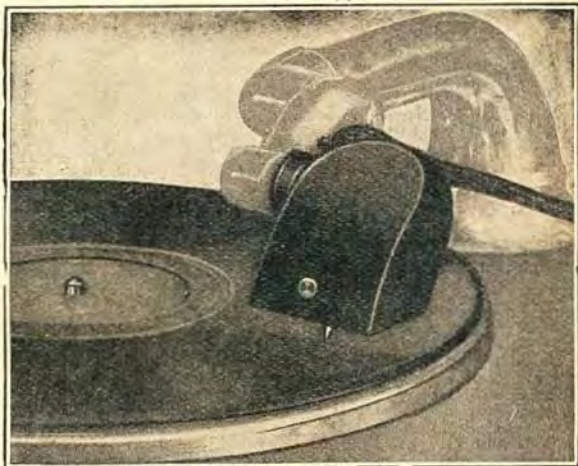
12 Sizes — WE. 2712  
1929 Los Angeles St., L. A.

**WALTER BIDDICK — Phone Westmore 9137**  
"A Complete Radio Program and Announcement Service"

## Utilize Your Radio to Play Phonograph Records— ELECTRICALLY!

# Music—

with Cathedral  
depth and beauty  
of reproduction by  
attaching the  
Pacent



## PHONOVOX

*The Electric Pick-Up*

The thrills—the enjoyment of hearing your favorite records played the **new way**—**ELECTRICALLY**—with a superb Cathedral-like tone quality of reproduction may now be yours, at an exceptionally small cost, by simply attaching the Pacent Phonovox to your radio and phonograph.

Resurrect the old phonograph from the attic! Hook it up to your radio with the Phonovox! Put on your favorite record—and your ears will scarcely believe it is the same record, so wonderfully natural and life-like is the reproduction.

The Phonovox is made in both the battery and AC models for sets using the UY227 or CY327 AC detector tubes—and either model may be attached in a few seconds' time without tools or making any changes in wiring.

*As your radio or phonograph dealer for a demonstration.*

*Representatives*

<b>J. P. HERMANS</b>	<b>MARSHANK SALES CO.</b>
<b>585 Mission Street</b>	<b>224 East 16th Street</b>
<b>San Francisco</b>	<b>Los Angeles</b>

**PACENT ELECTRIC CO., INC., NEW YORK**  
*Makers of the Famous Pacent Balanced Cone*

List Price

**\$12<sup>50</sup>**

Complete for  
either AC or  
Battery Model



*Sold and demon-  
strated by Radio  
and Phonograph  
Dealers Every-  
where.*



R. L. RUST  
Program Director

# KNRC Santa Monica, Cal.—800 Kc.

500 WATTS—375 METERS  
Municipal Auditorium, Ocean Park, Santa Monica, Calif.  
Phone Santa Monica 63-101  
Los Angeles Studio: Elks' Temple 99—Dunkirk 5154  
Owned and Operated by Kleruliff & Ravenscroft, Inc.

R. L. Rust  
Mngr. and Daytime Dir.

Paul Reese  
Night Director

Margaret MacDonald Shontz  
Assistant Program Director

C. B. Juneau  
Transmission Engineer

8:00 p. m.—Puritas Hour, presenting Air Theater Players.

9:00 p. m.—Ruthellen Miller, Ivan Edwards, Headline Trio.

## TUESDAY, APRIL 17

3:00 p. m.—Santa Monica Municipal Band.

6:45 p. m.—What's Doing in Elkd. m.

7:00 p. m.—Dance Orchestra; Joe Bishop and his Guitar.

8:00 p. m.—Santa Monica Municipal Band.

9:00 p. m.—Puritas Hour, presenting Zoellner Quartet.

## WEDNESDAY, APRIL 18

3:00 p. m.—Santa Monica Municipal Band.

6:45 p. m.—What's Doing in Elkd. m.

7:00 p. m.—Dance Orchestra and Helen Guest.

8:00 p. m.—Santa Monica Municipal Band.

9:00 p. m.—Lucy Day and the Headline Trio in an hour of French composition.

## THURSDAY, APRIL 19

3:00 p. m.—Santa Monica Municipal Band.

6:45 p. m.—What's Doing in Elkd. m.

7:00 p. m.—Dance Orchestra; Murray Peck, vocalist.

8:00 p. m.—Santa Monica Municipal Band.

9:00 p. m.—Phyllis Campbell, contralto; Paul Reese, tenor; Evelyn Paddock Smith, concert pianist.

## FRIDAY, APRIL 20

3:00 p. m.—Santa Monica Municipal Band.

6:45 p. m.—What's Doing in Elkd. m.

7:00 p. m.—Dance Orchestra; Joe Bishop & his Guitar.

8:00 p. m.—Santa Monica Municipal Band.

9:00 p. m.—Ruthellen Miller, Sherman Hunter, Headline Trio.

## SATURDAY, APRIL 21

3:00 p. m.—Santa Monica Municipal Band.

6:45 p. m.—What's Doing in Elkd. m.

7:00 p. m.—Dance Orchestra, Leonard Van Berg, soloist.

8:00 p. m.—Santa Monica Municipal Band.

9:00 p. m.—Zoellner Quartet.

11:00 p. m.—Air Theater Frolic.

### DAILY EXCEPT SUNDAY

1:00 p. m.—Siesta Hour, Albert Tufts at the console of the Elks mighty organ.

2:00 p. m.—Air Theater String Ensemble, Paul Reese, tenor.

3:00 p. m.—Santa Monica Municipal Band Concert.

5:45 p. m.—"Castles in the Air," Albert Tufts at console of the Elks mighty organ.

6:45 p. m.—What's Doing in Elkd. m.

7:00 p. m.—Elks 99 Dance Orchestra.

8:00 p. m.—Santa Monica Municipal Band Concert.

9:00 p. m.—Air Theater Headliner.

10:00 p. m.—Air Theater Dance Orchestra and soloists.

11:00 p. m.—Elks Toast to Absent Brothers.

### SUNDAY, APRIL 15

9:45 a. m.—Pilgrim Lutheran Church.

10:45 a. m.—International Bible Students.

2:30 p. m.—Santa Monica Municipal Band.

4:00 p. m.—International Bible Students.

4:30 p. m.—Vesper Services; Sibley Pease, organist.

6:15 p. m.—Pilgrim Lutheran Church.

7:00 p. m.—International Bible Students.

8:00 p. m.—Santa Monica Municipal Band.

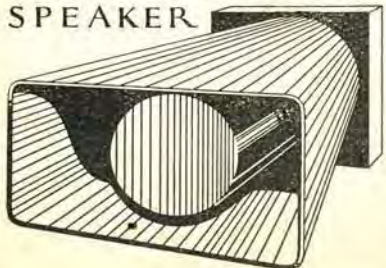
### MONDAY, APRIL 16

3:00 p. m.—Air Theater Varieties, Leonard Van Berg and assisting artists.

6:45 p. m.—What's Doing in Elkd. m.

7:00 p. m.—Dance Orchestra; Bobby Cross.

AEROFONIC  
AIR COLUMN  
SPEAKER



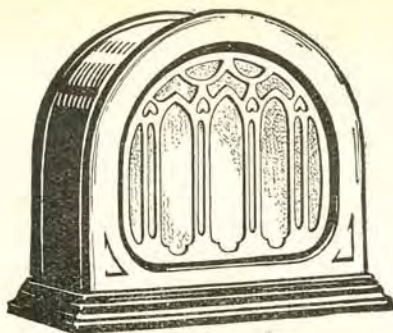
*There is no substitute for natural tone reproduction.*

Aerofonic Air Column Speakers have no tone of their own but give you the true voice of the artist amplified without distortion. The bass notes are reproduced as they are rendered and not over-exaggerated. The full range comes clearly. Less power is required to operate the Aerofonic Air Column Speaker. Phone Charley Weinberg for a demonstration.

Manufactured Exclusively By

**THE AEROFONIC COMPANY**  
Hill at 35th St. HU. 5770 Los Angeles





## Rola Table Cabinet Speaker

MODEL 20. PRICE . . \$35

*The Speaker Built for  
the A C Set*

**W**ITH the advent of the all electric, or socket power set, it has become necessary to have a loudspeaker capable of handling the increased voltages which this type of set brings into use.

In the new Rola speakers this requirement is fully met. The 1928 line of Rola loudspeakers gives a quality of reproduction little short of marvelous. The new Rola Table Cabinet, Model 20, gives an entirely new conception of radio tone quality and re-creates all notes from the highest to the lowest without a trace of rattling or blasting at any volume.

Ask your dealer for a demonstration.

### LISTENWALTER & GOUGH

Incorporated

*Wholesale Distributors of Rola Speakers*

THE NEW

LOS ANGELES  
918 E. FIRST ST.



SAN FRANCISCO  
325 FIFTH STREET



**LESLIE MAWHINNEY**  
Prog. Mgr. and Announcer

# KPLA Los Angeles, Calif.—1040 Kc.

500 WATTS—288.3 METERS  
Commercial Exchange Building, Eighth and Olive Streets  
Examiner and Romola Station

Phone TRinity 3202

Bertram O. Heller  
Business Manager  
Leslie Mawhinney  
Program Manager and Day  
Announcer  
Roland Colbert  
Engineer  
Nelson Case  
Assistant Program Mgr.  
and Night Announcer

TUESDAY, APRIL 17

- 10:30 a. m.—Records—Courtesy of Barker Brothers.  
7:00 p. m.—Sen. Geo. Wilder Cartwright.  
7:15 p. m.—Bob Harker and Tod Waterman; Virginia McCoy; Coral Atkins.  
9:00 p. m.—Fred Leedom Scott, tenor, and James Murray, baritone.  
9:30 p. m.—Billy Barron; Katherine O'Neill; Doris Decker.

WEDNESDAY, APRIL 18

- 9:00 p. m.—Ida Schutz, soprano; Pat O'Neill, Irish baritone; Gray T. Sampson, pianist.

THURSDAY, APRIL 19

- 10:30 a. m.—Records—Courtesy of Barker Brothers.  
7:00 p. m.—Glen Edmunds' Collegians.  
9:00 p. m.—Romola Theater Orchestra, soloists.

FRIDAY, APRIL 20

- 2:30 p. m.—Bureau of Public Safety of L. A. Police Department.  
5:00 p. m.—Spanish Course.  
7:00 p. m.—Nelson Case.  
7:30 p. m.—Helen Dalzel, soprano; Coral Atkins, pianist.  
9:00 p. m.—Cecil Fry and his Blue Three; Johnny Laughlin, piano solos; Jovita Jordan; Harry Coe.

SATURDAY, APRIL 21

- 10:30 a. m.—Records—Courtesy of Barker Brothers.  
7:00 p. m.—Studio program, with Jean Talbot, piano solos; Doris Decker; Katherine O'Neill; Leonard Van Berg.  
9:00 p. m.—Fay Sisters and Cliff Cunning.

DAILY EXCEPT SUNDAY

- 10:00 a. m.—Records, courtesy of Barker Bros., (except Tues., Thurs., Sat.).  
10:30 a. m.—Prudence Penny, courtesy of L. A. Examiner, ex. Tues., Thurs., Sat.  
11:00 a. m.—KPLA Diversities.  
3:00 p. m.—Palais de Dance, featuring Ralph Markey and his Musical Keys.  
4:00 p. m.—Health Bulletin.  
4:05 p. m.—Records, courtesy of Barker Bros.  
6:00 p. m.—Dinner hour program.  
8:00 p. m.—KPLA Florentine Quintet and soloists.  
10:00 p. m.—Palais de Dance.

SUNDAY, APRIL 15

- 8:00 p. m.—Romola Theater Orchestra; Billy Barron; Katherine O'Neill and others.

MONDAY, APRIL 16

- 5:00 p. m.—Spanish Course.  
7:00 p. m.—Nelson Case.  
7:30 p. m.—Popular Program — Katherine O'Neill; Bobby Gross.  
9:00 p. m.—Romola Theater Orchestra and soloist.



**Major Lawrence Mott**  
Announcer

# KFWO

Major Lawrence Mott  
Owner-Operator  
Miss Frances Hewitt  
Studio and Program Dir.  
Jack Duckworth, Jr.  
Bus. Mgn.

## Avalon, Calif.—1000 Kc.

250 Watts—300 Meters and 5656 KC.—53.07 Meters  
THE CATALINA ISLAND STATION  
"The Isle with a Smile"

TUESDAY, APRIL 16

- 6:00 p. m.—Popular concert.  
7:00 p. m.—Studio program.  
8:30 p. m.—Stories of musicians and their works.  
9:00 p. m.—Dance program.

WEDNESDAY, APRIL 18

- 6:00 p. m.—Varied instrumental music.  
7:00 p. m.—Symphonic concert.  
8:30 p. m.—Song recital.

THURSDAY, APRIL 19

- 6:00 p. m.—Vaudeville and fun.  
7:00 p. m.—Golden Hour.  
8:30 p. m.—Progress of Science Talk, Major Mott.

FRIDAY, APRIL 20

- 6:00 p. m.—Grand Opera and the classics.  
7:00 p. m.—Organ and instrumental.  
8:30 p. m.—Poetry and Books, Major Mott.

SATURDAY, APRIL 21

- 6:00 p. m.—Modern semi-classic and popular concert.  
7:00 p. m.—Golden Hour.  
8:30 p. m.—Poetry of all ages and nations, Major Mott.

## BALANCING AND REPAIRING

All Makes of Radios  
CHILDS' LABORATORY  
2310 S. Union, BE. 7445

# A GENUINE SALE REAL OPPOTUNITY

**BAKER & FITZGERALD, Inc.**  
Will Sell at Cost or Less 100 of Their  
Own Famous



## ALL ELECTRIC RADIOS

*Outstanding Values at Original Prices*  
*These Are Rare Buys — Fully Guaranteed*

List Price		Sale Price
\$ 42.50	3 Tube	\$ 29.75
49.50	3 Tube	34.50
82.50	4 Tube	57.50
98.50	4 Tube	68.50
189.00	6 Tube	137.50
200.00	7 Tube	145.00
325.00	7 Tube	215.00

Standard Parts Used Thruout

**ONLY 100 TO BE SOLD—ABSOLUTELY NO MORE**  
Sale Conditions: Small Sets, Cash; Large Models, Terms—No Trade-ins

## BAKER & FITZGERALD, Inc.

2603 W. 54th St.  
Cor. 4th Ave.  
Los Angeles, Cal.

VERmont 4194

Manufacturers of  
Regal Radio  
Republic Transformers



**OTTO HOEG**  
Musical Director

# KGfJ Los Angeles, Calif.—1410 Kc.

212.6 METERS—Washington Blvd. at Oak St.

"Keeping Good Folks Joyful Twenty-four Hours a Day"

Owned and Operated by

Ben S. McGlashan

Otto Hoeg

Musical Director

Calvin J. Smith

General Manager

Phones:

Westmore 7777

Westmore 7778

2:30 p. m.—Frank Martin, Don Hunt, Peggy Price.

4:00 p. m.—Marie Crowe, soprano; Bill Steinbrenner, violin.

6:00 p. m.—John Wright Orchestra.

7:00 p. m.—Semi-classical hour.

9:30 p. m.—Haywire Three, Norman Johnson, yodeller.

## MONDAY, APRIL 16

11:30 a. m.—Otto's Memory Contest.

12:00 noon—Elite Girls.

2:00 p. m.—L. A. Police Quartet.

7:00 p. m.—Charlie Davis, songs.

10:00 p. m.—Emil Groh, pianist; Golden State Hawaiians.

## TUESDAY, APRIL 17

9:30 a. m.—Bob Roper—Health Talk.

12:00 noon—Elite Girls.

2:00 p. m.—George Nays, trumpet solo.

7:00 p. m.—Two Little Redheads.

## WEDNESDAY, APRIL 18

9:30 a. m.—Mrs. Claire Charles.

12:00 noon—Elite Girls.

2:00 p. m.—Jimmie Holiday, tenor.

7:00 p. m.—Charlie Davis, uke and songs; Skeet Wakefield.

## THURSDAY, APRIL 19

11:30 a. m.—Otto's Memory Contest.

12:00 noon—Elite Girls.

7:00 p. m.—Hal Roach Studio Orchestra.

10:00 p. m.—Shadowland Serenaders.

## FRIDAY, APRIL 20

9:30 a. m.—Bob Roper—Health Talk.

12:00 noon—Elite Girls.

2:00 p. m.—George Nays, trumpet solo.

7:00 p. m.—Golden State Hawaiian Trio.

## SATURDAY, APRIL 21

12:00 noon—Elite Girls.

7:00 p. m.—Keystone String Quartet.

### DAILY EXCEPT SUNDAY

12:00 p. m.—"Nite Owl" program.

6:30 a. m.—Breakfast Frolic.

8:30 a. m.—Gordon Smith's Radiotising Service.

9:30 a. m.—Educational talks.

10:00 a. m.—Semi-classical program.

11:00 a. m.—Studio program.

12:00 m.—Uncle Walt's Luncheon Hour.

1:00 p. m.—Studio hour.

2:30 p. m.—Frank Martin, tenor; Otto Hoeg, pianist.

3:30 p. m.—Studio hour.

4:30 p. m.—Amateur Hour for tryouts.

5:00 p. m.—Studio Program.

5:30 p. m.—Market Reports, U. S. Dept. of Agriculture.

6:00 p. m.—John Wright's Orchestra.

7:00 p. m.—Gordon Smith's Radiotising Service.

8:00 p. m.—El Patio Ballroom Orchestra by remote control.

10:00 p. m.—Studio program.

### SUNDAY, APRIL 15

12:01 a. m.—Popular music on the Electrola.

10:00 a. m.—Kaplan and Beelby, organ and violin; Peggy Prices, blues singer.

12:30 p. m.—Van Sisters Trio.



**EDMUND LYTTON**  
Program Director

# KEJK Beverly Hills, Cal.—1190 Kc.

250 WATTS—252 METERS

Owned and Operated by EARNEST J. KRAUSE, INC.

Earne J. Krause, Inc., Bldg., Beverly Hills.—OXford 1036

## MONDAY, APRIL 16

7:30 p. m.—Novelty Program.

8:00 p. m.—Betty Travis, violinist; Iva May Travis, pianist, and Reginald Taylor, baritone.

## TUESDAY, APRIL 17

7:30 p. m.—Amber Fay, soprano, and James Murray, baritone, in duet.

8:00 p. m.—Louise Kloss Trio, and Paul Taylor, tenor.

## THURSDAY, APRIL 19

7:30 p. m.—Hawaiian Music.

8:00 p. m.—Beverly Hills Institute Music and Art.

## FRIDAY, APRIL 20

7:30 p. m.—Novelty Program.

8:00 p. m.—Bessie Chapin Trio, Dr. Omeron, tenor.

### DAILY EXCEPT SUNDAY, WEDNESDAY AND SATURDAY

6:00 p. m.—Studio Hour.

6:30 p. m.—Jack Cronshaw and his Orch.

9:00 p. m.—KEJK Dance Orchestra.

10:00 p. m.—Request record hour.

**Golden Bear** AIR COLUMN **SPEAKER**

Beware of Imitations  
Westmore 2712



AIMEE SEMPLE  
McPHERSON

# KFSG Los Angeles, Calif.—1190 Kc.

500 Watts—252.0 Meters. Angelus Temple, Echo Park. Fl. 3121  
"Four Square Gospel"

Aimee Semple McPherson  
Founder, President

Roderick H. Morrison  
Manager

P. S. Lucas  
Technician in Charge

C. N. Tucker  
Announcer

### DAILY EXCEPT SUNDAY

- 7:00 a. m.—Family Altar.
- 8:00 a. m.—Bible Study Hour.
- 10:30 a. m.—Sunshine Hour.
- 11:30 a. m.—Noonday Musical.
- 4:00 p. m.—Classic Hour, ex. Wed. and Sat.
- 12:00 midnight—Midnight Heralds and music

### SUNDAY, APRIL 15

- 10:30 a. m.—Sunday Morning Worship.
- 2:30 p. m.—Dispensational Message.
- 6:00 p. m.—Silver Band Concert.
- 7:00 p. m.—Musical Hour.
- 8:00 p. m.—Revival Service.
- 12:00 p. m.—Midnight Heralds.

- MONDAY, APRIL 16
- 3:00 p. m.—Santa Monica Branch.
  - 5:00 p. m.—Vesper Hour, Organ Recital, Esther Fricke.

- TUESDAY, April 17
- 3:00 p. m.—Goodyear Branch Church.
  - 5:00 p. m.—Book Lover's Hour.
- WEDNESDAY, APRIL 18
- 2:30 p. m.—Divine Healing Service, Aimee Semple McPherson.
  - 6:00 p. m.—Organ Recital, Esther Fricke.
  - 7:00 p. m.—Symphony Orchestra Concert.
  - 7:30 p. m.—Water Baptismal Service.

- THURSDAY, APRIL 19
- 3:00 p. m.—Rev. Britton and Alhambra Group.
  - 5:00 p. m.—Vesper Hour, Organ Recital, Esther Fricke.

- FRIDAY, APRIL 20
- 3:00 p. m.—Bertha Scramton and Pasadena Group.
  - 5:00 p. m.—World Travel Hour.

- SATURDAY, APRIL 21
- 2:00 p. m.—Children's Happy Hour.
  - 3:00 p. m.—Crusader Hour.
  - 5:00 p. m.—The Banjo Club.
  - 7:30 p. m.—Divine Healing Service.

# KTBI Los Angeles, Calif.—1090 Kc.

750 Watts—275.1 Meters—Bible Institute of Los Angeles  
HARRY P. HERDMAN, Announcer, Phone ME. 6701  
JOHN GLASSE, Director of Programs

- DAILY EXCEPT SATURDAY AND SUNDAY
- 8:30 a. m.—Devotional hour.
  - 10:45 a. m.—Student Chorus singing, (except Monday).

### SUNDAY, APRIL 15

- 10:45 a. m.—Church of the Open Door.
- 3:00 p. m.—Jewish Radio Hour.
- 6:00 p. m.—Radio Vesper Service.
- 7:15 p. m.—Church of the Open Door.
- 9:15 p. m.—Old hymns by Chorus Choir.

### MONDAY, APRIL 16

- 2:00 p. m.—Monday Club.
- 4:00 p. m.—Bible Institute News Hour.
- 7:00 p. m.—Mexican Program.
- 8:00 p. m.—Musical program.
- 9:00 p. m.—Old hymns by Mixed Quartet.

### TUESDAY, APRIL 17

- 2:00 p. m.—King's Business Question Box.

- 4:00 p. m.—Biographies of Great Hymn Writers.

### WEDNESDAY, APRIL 18

- 2:00 p. m.—Inspirational Hour.
- 4:00 p. m.—News of Christian Work in the World.

### THURSDAY, April 19

- 2:00 p. m.—New Testament Word Studies.
- 4:00 p. m.—Studies of Missionary Heroes.

### FRIDAY, APRIL 20

- 2:00 p. m.—Great Preachers of the Past and Their Messages.
- 4:00 p. m.—An hour with Prophecy.
- 7:00 p. m.—Exposition of International Sunday School lesson.
- 8:00 p. m.—St. Luke's Gospel; Music.
- 9:15 p. m.—Old hymns by Girl's Octet.

## SET MANUFACTURERS

GET OUR SPECIAL PRICES ON

**Chokes**  
(40 Mil. Cap.)

30 Henrys  
50 Henrys  
65 Henrys

**Transformers**

For  
A and B  
Eliminators

Call VE. 1619

or write

**POWELL MANUFACTURING CO.**

4009 S. Western Avenue

LOS ANGELES



DICK SMITH

Studio Dir. and Announcer Art Gearhart, Studio Acc.

# KFQZ Los Angeles, Calif.—1290 Kc.

232.4 METERS  
1417 S. Figueroa St., Los Angeles, Calif. WESTmore 3001.

SUNDAY, APRIL 15

8:00 a. m.—Dan Parker courtesy program.  
9:00 p. m.—April Fool Frolic.

MONDAY, APRIL 16

7:00 p. m.—After dinner concert  
8:00 p. m.—Ernie Ownes Orchestra

TUESDAY, APRIL 17

7:00 p. m.—Wally Haines Orchestra.  
8:00 p. m.—Lou Bickels Orchestra

WEDNESDAY, APRIL 18

7:00 p. m.—Musical comedy hour  
8:00 p. m.—Glenn Edmon's Sunset Serenaders; Mary Stockberger.

THURSDAY, APRIL 19

7:00 p. m.—Thelma Potter; Howard Dodds, soprano.

8:00 p. m.—California Poppies, Helen Pacino

FRIDAY, APRIL 20

7:00 p. m.—Josephine Lackmar's artist hour  
8:00 p. m.—Coppock Trio, Rae Silverman.

SATURDAY, APRIL 21

7:00 p. m.—Ballad hour.

## DAILY EXCEPT SUNDAY

7:00 a. m.—Aero Ad Service; studio talent.  
9:00 a. m.—The Bulldog and the Bullfrog.  
10:00 a. m.—Panatropo and Shopping News.  
3:00 p. m.—KFQZ Orchestra, soloists.  
5:00 p. m.—Dinner hour program, courtesy Barker Bros.  
9:00 p. m.—J. V. Baldwin Orchestra  
10:00 p. m.—Dance music.



E. C. HUCKABEE

# KGEF Los Angeles, Calif.—1140 Kc.

1000 WATTS—263 METERS  
TRINITY METHODIST CHURCH, BOB SHULER, Pastor

C. C. Hooper  
Manager

M. J. Hankins  
Technician

Phone Westmore 8887

7:00 p. m.—Dr. J. A. B. Fry.  
7:20 p. m.—John Unfreid and Mary McLaughlin.  
7:40 p. m.—Lions Club Male Quartet.  
8:00 p. m.—Bob Shuler.  
9:00 p. m.—Maude Reeves.  
9:20 p. m.—Hired Man and Orthophonic Concert.

WEDNESDAY, APRIL 18

6:00 p. m.—Uncle Tom's Children's Hour.  
6:30 p. m.—L. A. Braille Assoc.  
7:00 p. m.—KGEF Weekly Doings.

THURSDAY, APRIL 19

5:30 p. m.—Uncle Tom's Children's Hour.  
6:30 p. m.—Gertrude and Freda Custis.  
7:00 p. m.—Radio Sunday School.  
7:20 p. m.—The Hired Man.  
7:40 p. m.—Inspirational talk.  
8:00 p. m.—Bob Shuler's Civic talk.  
8:04 p. m.—Studio impromptu musical.  
9:20 p. m.—Douglas MacKenzie and Ruth Roland.  
9:40 p. m.—South Park Bereans.

SUNDAY, APRIL 15  
10:45 a. m.—Morning Service.  
3:00 p. m.—So. Calif. Holiness Ass'n.  
4:00 p. m.—Studio Records.  
5:00 p. m.—Vesper Service.  
7:00 p. m.—Trinity Choir.  
8:00 p. m.—Bob Shuler.  
9:00 p. m.—The Old Songs Quartet.  
9:45 p. m.—Bob Shuler.

TUESDAY, APRIL 17

5:30 p. m.—Uncle Tom's Children Hour.  
6:30 p. m.—Margaret Hughes, Jay Allard, and Ida Mae Goltz.

## Standard Radio Co.

Telephone: WEStmore 1560

417 West Pico Street

11 years in the Radio business in Los Angeles. Call on us or phone for free advice in regard to modernizing your Radio set.

Authorized Sales and Service

ATWATER KENT CROSLY SPARTON

PEERLESS, ROLA AND WESTERN ELECTRIC SPEAKERS



TOM SEXTON

## San Diego, California—680 Kc.

# KFSD

500 WATTS—440.9 METERS  
 Grant Hotel, 326 Broadway, San Diego  
 Telephone Main 8661  
 WM. H. BLACK, President  
 TOM SEXTON, General Manager  
 "A Kiss from San Diego"

### DAILY EXCEPT SUNDAY—

- 10:00 to 11:00 a. m.—Amy Lou Shopping Hour.
- 12:30 to 1:30 p. m.—Carr Bros. Plata Real Orchestra
- 5:45 to 6:00 p. m.—Late news items, sporting events by San Diego Union and Tribune.
- 6:00 to 7:00 p. m.—Musical Review

### SUNDAY, APRIL 15

- 11:15 a. m. to 12:15 p. m.—Services 1st Unitarian Church.
- 2:00 to 3:00 p. m. — Services International Bible Students.
- 3:00 to 4:00 p. m. — Services Theosophical Society.
- 8:15 to 10:00 p. m.—Concert program, featuring Hutton's Hotel Del Coronado Concert quartette and John Claire Monteth.

### MONDAY, APRIL 16

- 7:00 to 8:00 p. m.—All Star Five Orch.
- 8:00 to 9:00 p. m.—Studio program.
- 9:00 to 10:00 p. m.—San Diego Union and Evening Tribune musical program.

### TUESDAY, APRIL 17

- 7:00 to 8:00 p. m.—Musical program.
- 8:00 to 9:00 p. m.—Thearle's classical orthophonic.
- 9:00 to 10:00 p. m.—Studio artists' hour.

### WEDNESDAY, APRIL 18

- 7:00 to 7:30 p. m.—Theodore Warfield, Doris Ridgway.

- 7:30 to 8:30 p. m.—Concert program, Theosophical Society.
- 8:30 to 9:00 p. m.—Orthophonic pipe organ.
- 9:00 to 10:00 p. m.—Aeolian Quartette.
- 10:00 to 11:00 p. m.—Ratliff Dance Acad.

### THURSDAY, APRIL 19

- 7:00 to 8:00 p. m.—San Diego Police Dept. program.
- 8:00 to 9:00 p. m.—Unitarian Church concert.
- 9:00 to 10:00 p. m.—Ratliff Academy of Dancing

### FRIDAY, APRIL 20

- 7:00 to 8:00 p. m.—Fegan's San Diego Orch.
- 8:00 to 8:30 p. m.—Minor Twins, Stubbs Brothers.
- 8:30 to 10:00 p. m.—Hutton's Hotel Del Coronado Concert Quartette.

### SATURDAY, APRIL 21

- 7:00 to 8:00 p. m.—San Diego H. S. prog.
- 8:00 to 9:00 p. m.—Franco-American houb.
- 9:00 to 10:00 p. m.—Studio program.
- 10:00 to 11:00 p. m.—Ratliff Dance Acad.



WILLIAM GOULD  
 Business Manager

# KELW

## Burbank, Calif.—1310 Kc.

MAGNOLIA PARK. 500 WATTS—228.9 METERS  
 "The White Spot of the San Fernando Valley"

Phone Burbank 1192

- Earl L. White, Owner
- Harry A. James  
 Program Manager
- William Gould  
 Business Manager
- Melvin Hunt  
 Assistant Announcer
- Stuart F. Wainwright  
 Technical Engineer

- 8:00 p. m.—Calif. String Quartet, Cliff Gunning, tenor.
- 9:00 p. m.—Lee Brann's New Society Orch.

### WEDNESDAY, APRIL 18

- 5:00 p. m.—Jack Rogers Feature Hour.
- 7:00 p. m.—Van Nuys Specialty Program.
- 8:00 p. m.—Peggy and Edna, Novelty Duo; Dorothy Earle, movie star; Ray Haddock, tenor soloist.

### THURSDAY, APRIL 19

- 7:00 p. m.—Valry Sisters, Belgian Nightingales; Mel Hunt, songs.
- 8:00 p. m.—Soloists from Mission Play.
- 9:00 p. m.—Mission Play Trio.

### FRIDAY, APRIL 20

- 5:00 p. m.—Jack Rogers Feature Hour.
- 7:00 p. m.—Burbank Tribune Novelty Program.
- 8:00 p. m.—Neapolitan Girls; Otto Ploetz, tenor.
- 9:00 p. m.—San Fernando Elks, Orchestra.

### SATURDAY, APRIL 21

- 7:00 p. m.—Myra Belle Vickers Trio; Albert Bryant, tenor; KELW, Mixed Quartet.
- 8:00 p. m.—Howard and Beatrice Cavanah, Duettists; Matt Lauder, Scotch Baritone.
- 9:00 p. m.—Calif. String Quartet; Jack Jenkins, Jeanne Dunn, song impressionist; Eva Jenkins, whistler.

### DAILY EXCEPT SUNDAY

- 10:00 a. m.—Audrey Evans and Jack Brooks.
- 11:00 a. m.—World News and Panatrop.
- 6:00 p. m.—California String Quartet.

### MONDAY, APRIL 16

- 7:00 p. m.—Ed Graham and Cook Bros.; Harold Drummond, Scotch baritone.
- 8:00 p. m.—Kenney and Ray, vocal duettists; Evangeline Huntley Smith, soprano.
- 9:00 p. m.—Magnolia Park Trio. Emma Woodland, soprano soloist.

### TUESDAY, APRIL 17

- 5:00 p. m.—Jack Rogers Feature Hour.
- 7:00 p. m.—Walter Butterley, Herbert Henning, pianist; Prof. Glumac, Concertina soloist.



EDDIE BARNES

Announcer &amp; Program Mgr.

# KMIC Inglewood, Calif.—1340 Kc.

250 WATTS—224 METERS  
Chamber of Commerce Bldg., Inglewood, Calif.  
Newspaper of the Air

Owned and Operated by  
James R. Fouch

O. B. Mills  
Engineer

Phone Direct Wire  
T Hornwall 1121  
Long Distance  
Inglewood 1897

NEWS  
BULLETIN  
HOURLY

## WEDNESDAY, APRIL 18

- 9:35 a. m.—Bob Wilson, songs and uke.  
10:00 a. m.—Dorothy McCormick, ballads.  
2:00 p. m.—Ruth Ritter Howell, soprano;  
2:30 p. m.—Lawrence Babise, jazz pianist.  
3:00 p. m.—L. A. Police Quartet.  
3:30 p. m.—Mildred Jean, soprano.  
3:40 p. m.—Harry Vonzell, uke and songs.  
4:00 p. m.—Uncle Marshall Steadman  
5:00 p. m.—Organ recital.  
7:00 p. m.—Loretta Concert Trio.  
7:30 p. m.—Mary Mitchell and R. Oswald.  
7:45 p. m.—John Mand.  
8:00 p. m.—Professional try-out period.  
8:30 p. m.—Eddie West's Hawaiian Trio.  
9:00 p. m.—Mitchaud's Spoilers Male Quartet.  
10:00 p. m.—Rob and Buster, buggy ride.

## THURSDAY, APRIL 19

- 9:35 a. m.—Tillie the Toiler, songs, piano.  
10:00 a. m.—Bob and Buster.  
2:00 p. m.—Lee Fenton, baritone.  
2:30 p. m.—Katheryn Michelson Woods.  
3:00 p. m.—L. A. Firemen's Orchestra  
4:00 p. m.—Dr. J. J. Tanner,  
4:15 p. m.—Jones' Hawaiian Trio.  
4:30 p. m.—Organ recital.  
5:00 p. m.—Earl Creedon, songs; Banjo boys  
5:00 p. m.—Louise Moody Concert Trio.  
7:30 p. m.—Burley Stump, tenor.  
8:00 p. m.—The Minute Man.  
8:15 p. m.—Frenchy Barquet Orchestra.  
9:35 a. m.—Bob Wilson, uke and songs.  
10:00 a. m.—Louis Fields, piano selections.

## FRIDAY, APRIL 20

- 2:00 p. m.—K. A. Mullani Orchestra.  
4:00 p. m.—Country Jane.  
4:30 p. m.—Lillian Deslane, soprano.  
5:00 p. m.—Organ request program.  
7:00 p. m.—Geo. D. Fassett, guitar.  
8:00 p. m.—Undersheriff Eugene Biscailuz.  
8:15 p. m.—KMIC Merry Makers.  
9:00 p. m.—Three Harmony Boys.  
4:30 p. m.—Lillian DeShone, soprano.  
9:35 a. m.—Lorella Looker, piano.  
10:00 a. m.—Bob and Buster.  
2:00 p. m.—KMIC Vaudeville.  
4:30 p. m.—Sadie Parrish, organ.  
5:00 p. m.—Jones' Hawaiian Trio.  
8:00 p. m.—The Minute Man.  
8:15 p. m.—KMIC Celody Five Dance Odch.  
9:00 p. m.—Sawtelle Newsboys Harmonica  
Band.  
10:00 p. m.—Campbell Bros. and Roy Blaize.

## DAILY EXCEPT SUNDAY

- 7:00 a. m.—Shopping list with records.  
8:00 a. m.—KMIC Breakfast Club with New  
Idea Man.  
9:20 a. m.—The Minute Man.  
9:50 a. m.—Mrs. Eddie Barnes.  
10:30 a. m.—Charles Beauchamp, tenor.  
11:00 a. m.—Organ Recital, Sadie Parrish,  
12:00 noon—Classified ads records.  
1:00 p. m.—Columbia records.  
6:00 p. m.—KMIC Dinner Club.

## SUNDAY, APRIL 15

- 8:15 a. m.—KMIC Breakfast Club.  
10:00 a. m.—Rev. Henry C. Culberson.  
7:00 p. m.—International Bible Students.

## MONDAY, APRIL 16

- 9:35 a. m.—Mildred Jean, vocal.  
10:00 a. m.—Mrs. Leonard M. Frey, soprano.  
12:00 noon—Columbia records.  
2:00 p. m.—Mary Mitchell, soprano.  
2:30 p. m.—Rod Loring, violinist.  
3:00 p. m.—The Smile Club  
4:00 p. m.—The Country Jane, old songs.  
4:30 p. m.—Lillian DeShone, soprano.  
5:00 p. m.—Organ recital.  
7:00 p. m.—Louise Moody Concert Trio.  
8:00 p. m.—Saxophone Elimination Contest.  
9:00 p. m.—Arts Artists' Dance Band and  
Blaine Montgomery, baritone.

## TUESDAY, APRIL 17

- 10:00 a. m.—Bob and Buster,  
2:00 p. m.—Elaine Lancaster, blues.  
3:00 p. m.—Anita Wells Seigrest, pianist.  
4:00 p. m.—Sadie Parrish, organist.  
3:30 p. m.—Ka Mullani Orchestra.  
5:00 p. m.—Loretta Faurat, blues.  
7:00 p. m.—Geo. D. Fassett Hawaiian Trio.  
7:45 p. m.—Attorney S. S. Hahn.  
8:00 p. m.—The Minute Man.  
8:10 p. m.—KMIC Melody Five.  
9:00 p. m.—Sid Graff, ballads; Mabel Harn,  
blues.

## DE JARNATT RADIO GROUND

Will make a wonderful difference in your radio reception. This ground contains chemicals that turn into moisture, and this moisture is held close to the container by other chemicals. The De Jarnatt is the ONLY radio ground that absorbs and holds moisture. The container can be refilled, if necessary, through filler tube, simply by removing cork. Order from your dealer or direct from manufacturer.

PRICE \$7.00

B. J. DE JARNATT, 139 No. Alta St., Los Angeles. Capital 6131

WALTER BIDDICK — Phone Westmore 9137

"A Complete Radio Program and Announcement Service"





N. E. BROWN

A LOT OF GOOD PEOPLE bring us their radio receivers, power speakers and current supply equipment to get it properly worked out after they have had a lot of others "tinker" around for them.

**THAT'S GOOD!**

AND THEN A LOT OF FOLKS come to us and tell us just what they want to accomplish and we engineer the whole outfit for them, or they get our specifications and make the assembly themselves and we do the **FINISHING UP** and **ADJUSTING** for them and they **SAVE A LOT OF MONEY, TIME AND GRIEF.**

**AND THAT'S BETTER!**

WE HAVE ONLY THE BEST OF EVERYTHING

**N. E. BROWN TECHNICAL LABORATORY**

6805 So. Western Ave., Los Angeles, Cal.  
 THornwall 0270

Open until 9 P. M., Tuesday, Thursday and Saturday Evenings

**KLEER-TONE!!** *The Ideal Station Separator*



**\$4.00**

**EASY** To Install  
 To Operate

- Sharpens selectivity to finest degree.
- Increases volume.
- Reduces static.
- Saves power.
- Increases life of batteries.
- Works on any type of set.
- Brings in more distant stations.

Install a KLEER-TONE and enjoy the *best* in radio entertainment.

[Remit **NOW**, to avoid delay. Money refunded]  
 after 10 days' trial, if you are not satisfied.]

Sent Postpaid by

**KLEER-TONE DISTRIBUTING CO.**

207 Ferguson Bldg.

LOS ANGELES



CLARENCE CRARY  
Announcer

# KFON

## Long Beach, Cal.—1240 Kc.

"Where Your Ship Comes in"

1000 WATTS—242 METERS—PIGGLY WIGGLY STATION  
Owned and Operated by NICHOLS & WARINNER, Inc.  
Studio: 211 Jergins Trust Bldg. 617-19, 614-60  
Office: 212 Jergins Trust Bldg. 617-19, 614-60

### DAILY EXCEPT SUNDAY

- 8:30 a. m.—"Bright" and "Early" Hour.  
9:00 a. m.—Benjamin Irving, Jewelers, except Tues., Thurs., Sat.).  
9:00 a. m.—Hirshfield's, except Monday, Wednesday and Saturday.  
9:30 a. m.—Organ Recital—Kilpatrick's Bakery.  
10:00 a. m.—"Shopping News"—Hugh A. Marti Co.  
10:15 a. m.—"Devotional Period," except Saturday.  
10:30 a. m.—Physiology of Beauty—Georgia O. George, ex. Saturday.  
11:30 a. m.—Press-Telegram Early News—Frank Goss.  
12:00 noon—Lost and Found Announcements.
- 12:05 p. m.—Popular Jazz Band (ex. Tues., Thurs., Sat.).  
12:30 p. m.—"Doris and Clarence."  
1:30 p. m.—"Snappy Songs," Lucky Wilber.  
2:00 p. m.—Manuel Contreras, cornetist; Hal C. Nichols, violinist; Doris Dolan, pianist.  
4:00 p. m.—Press-Telegram late news, Frank Goss.  
4:30 p. m.—Piggly Wiggly Concert Orchestra and Entertainers.  
6:45 p. m.—Adult Radio School, Elmer C. Jones (except Tuesday, Saturday).
- ### DAILY EXCEPT MONDAY
- 2:30 p. m.—Long Beach Municipal Band.  
3:10 p. m.—Piggly Wiggly Menu Girl (except Sunday).  
3:20 p. m.—Long Beach Municipal Band.  
8:00 p. m.—Press-Telegram presenting L. B. Municipal Band.  
12:00 p. m.—Midnight dance program.
- ### SUNDAY, APRIL 15
- 9:30 a. m.—Capitol Theatre organ.  
10:00 a. m.—Angeles Abbey program.
- 11:00 a. m.—St. Luke's Episcopal Church—Rev. Perry Oustin.  
12:30 p. m.—Birkel Music Co.  
1:30 p. m.—Pacific Coast Club organ.  
4:00 p. m.—Late popular record releases.  
5:30 p. m.—"The Haymakers."  
6:00 p. m.—Bear Cafe Jazz Band.  
7:00 p. m.—Barkey's Ladies' Mandolin Or.  
7:45 p. m.—First Church of Christ, Scientist.  
9:00 p. m.—Piggly Wiggly All Star Night.
- ### MONDAY, APRIL 16
- 1:00 p. m.—Spanish program.  
2:30 p. m.—Capitol Theatre Organ  
7:00 p. m.—Suydam's Buttercream School  
8:00 p. m.—Bennie Light, jazz pianist; Mark Cook, tenor.  
9:00 p. m.—"Hirshfield's Hawaiians."  
9:30 p. m.—Kiwanis Frolic.
- ### TUESDAY, APRIL 17
- 12:00 noon—Hawaiians Program.  
1:00 p. m.—Kiwanis Club Luncheon.  
6:45 p. m.—Talk on Health.  
7:00 p. m.—Hancock Oil Program.  
9:00 p. m.—"Tone Poems."  
10:00 p. m.—Majestic Ballroom Orchestra.  
11:00 p. m.—Pacific Coast Club Organ.
- ### WEDNESDAY, APRIL 18
- 1:00 p. m.—Rotary Club Luncheon.  
7:00 p. m.—"Fain's Pair of Kids."  
7:30 p. m.—Georgia O. George.  
9:00 p. m.—Pacific Coast Club Orchestra.  
9:30 p. m.—Main Event, Wilmington Bowl.  
11:00 p. m.—Pacific Coast Club Orchestra.
- ### THURSDAY, APRIL 19
- 12:00 noon—Hawaiian Program.  
1:00 p. m.—Spanish program.  
2:00 p. m.—Health and Efficiency, Dr. Clark.  
7:00 p. m.—Cloverleaf Orchestra.  
7:30 p. m.—Angeles Abby program.  
9:00 p. m.—Hi Jinks Musical Comedy, Capitol Theatre.  
10:00 p. m.—Masterpiece program.  
11:00 p. m.—Pacific Coast Club Organ.
- ### FRIDAY, APRIL 20
- 1:00 p. m.—Masonic Club Luncheon.  
7:00 p. m.—Irene Martin, Lucky Wilber, Jack Nash and entertainers.  
9:00 p. m.—"Ye Olde Song Album."  
10:00 p. m.—Capitol Theatre Organ.  
11:00 p. m.—West Coast Theatres Frolic.
- ### SATURDAY, APRIL 21
- 10:30 a. m.—Capitol Theatre Organ.  
12:00 noon—Hawaiian Program.  
1:00 p. m.—Vernon Dalhart Program.  
1:30 p. m.—Imperial Trio.  
4:30 p. m.—Majestic Ballroom Orchestra.  
7:00 p. m.—Piggly Wiggly Snappy Hour.  
9:00 p. m.—Pacific Coast Club Orchestra.  
10:00 p. m.—Masterpiece program.  
11:00 p. m.—Majestic Ballroom Orchestra.

**At Last  
It May Be Yours—  
The CAPIDYNE unit—**

### GIVES YOU

1. Greater Distance.
2. Additional Selectivity.
3. Eliminates Interference, Squeals, Howls.
4. Crystal Clear, True-toned Reception.

**PRICE  
only  
\$9.25**

Gives an average 5-tube set superhetrodyne qualities—adaptable to any set—installation time, 2 minutes. Money back if not entirely satisfied. Literature on request.

ALLEN RADIO LABORATORIES  
374 11th Street., Oakland, Calif.  
Dealers Write for Special Proposition



**CURTIS PECK**  
Announcer

# KPO San Francisco, Calif.—710 Kc.

1000 WATTS—422.3 METERS

HALE BROTHERS AND THE CHRONICLE  
"The Voice of San Francisco"

Phone Kearney 5777

J. W. Laughlin  
Managing Director

Mrs. Frederick Crowe  
Program Director

Albert J. Hodges  
Technical Director

1:00 p. m.—E. A. Pierce & Co. stock market quotations.

6:00 p. m.—Wolverines.

7:20 p. m.—Book review by Harold Small.

8:00 p. m.—N. B. C.\*

9:00 p. m.—N. B. C.\*

**TUESDAY, APRIL 17**

10:00 a. m.—Ann Warner, domestic economist.

10:25 a. m.—Ye Towne Cryer Service.

10:30 a. m.—N. B. C.\*

11:00 a. m.—N. B. C.\*

11:15 a. m.—Gypsy and Marta.

11:45 a. m.—Program by Kane's Hawaiians.

8:00 p. m.—N. B. C.\*

8:30 p. m.—N. B. C.\*

9:00 p. m.—Kolster Radio Hour.

**WEDNESDAY, APRIL 18**

10:45 a. m.—Gold Medal service talk.

11:00 a. m.—Gypsy and Marta.

6:30 p. m.—N. B. C.\*

7:00 p. m.—Studio program.

8:00 p. m.—N. B. C.\*

8:30 p. m.—N. B. C.\*

10:00 a. m.—Ann Warner, domestic economist

11:00 a. m.—Gypsy and Marta.

12:15 p. m.—Ninon in a fashion talk.

7:00 p. m.—Poultry talk.

7:15 p. m.—Sports-on-the-Air by Harry Smith.

8:00 p. m.—N. B. C.\*

9:00 p. m.—N. B. C.\*

9:30 p. m.—Neapolitan Four.

**FRIDAY, APRIL 20**

10:45 a. m.—Gold Medal service talk.

11:00 a. m.—Gypsy and Marta.

12:45 p. m.—Commonwealth Club luncheon

1:30 p. m.—KPO Instrumental Trio.

8:00 p. m.—N. B. C.\*

9:00 p. m.—N. B. C.\*

9:30 p. m.—Abas String Quartet, Allan Wilson, tenor.

10:30 p. m.—KPO Dance Orchestra.

**SATURDAY, APRIL 21**

10:00 a. m.—Anna Warner, domestic economist

11:00 a. m.—Gypsy and Marta.

7:00 p. m.—KPO Dinner Dance Hour.

8:00 p. m.—N. B. C.\*

- DAILY EXCEPT SUNDAY**
- 6:45 a. m.—Health and Happiness Period.  
8:00 a. m.—The Shell Happy Time.  
9:30 a. m.—Bobbie's Daily Chat, sponsored by Roos Bros.  
10:30 a. m.—Ye Town Crier (except Tues.).  
11:30 a. m.—Kane's Hawaiians (except Tues. and Fri.).  
12:00 noon—Time Signals.  
1:00 p. m.—Instrumental Trio (except Fri.).  
1:15 p. m.—Stock and Fruit Reports (except Mon. and Fri.).  
2:45 p. m.—Play by play broadcast of Pacific Coast Baseball Games (except Mon.).  
4:30 p. m.—Ye Town Crier Service.  
5:00 p. m.—Children's Hour.  
6:00 p. m.—Reo-Logue, with music by the Reo Wolverines.  
6:30 p. m.—Musical program (except Mon., Wed., Thurs., Sat.).  
7:30 p. m.—DX period (except Mon., Sat.).  
10:00 p. m.—KPO Dance Orch., ex. Mon., Fri.

**SUNDAY, APRIL 15**

- 9:45 a. m.—Church Services.  
1:00 p. m.—N. B. C.\*  
2:45 p. m.—Play-by-play broadcast of the Pacific Coast League baseball games.  
6:30 p. m.—N. B. C.\*  
7:30 p. m.—Organ recital by Uda Waldrop.  
8:30 p. m.—N. B. C.\*  
9:00 p. m.—N. B. C.\*

**MONDAY, APRIL 16**

- 10:15 a. m.—Art talk by Helen Gordon Barker.  
11:00 a. m.—Gypsy and Marta.

\*See Page 42 for detailed program of National Broadcasting Co.

## Official MAGNAFORMER LABORATORY

The Magnaformer, the Set of Proven Performance, built as per Factory Specifications, Wired and Tested, \$150.

We will test, assemble and wire your kit for \$35.00.

Workmanship and Efficiency Guaranteed

## LABORATORY OF RADIO STANDARDS

E. K. HAYES

2408 West Vernon

VERMONT 6543

Los Angeles, Calif.



**HOWARD MILBOLLAND**  
Announcer

# KGO Oakland, California—780 Kc.

5000 WATTS—384 METERS  
PACIFIC COAST STATION, GENERAL ELECTRIC CO.  
Phone Fruitvale 5980

## DAILY EXCEPT SUNDAY—

- 11:30 a. m. to 1:00 p. m.—Luncheon concert.
- 12:30 and 1:00 p. m.—Stock and weather reports.
- 6:00 p. m.—San Francisco and New York Stocks (ex. Saturday).
- 6:20 p. m.—News (except Monday and Saturday).
- 7:00 p. m.—Weather Reports.
- 9:00 p. m.—Time Signals

- 8:00 p. m.—N. B. C.\*
- 8:30 p. m.—N. B. C.\*
- 9:00 p. m.—"The Pilgrims."

## WEDNESDAY, APRIL 18

- 11:15 a. m.—Freda Bayley; "The Home."
- 6:30 p. m.—N. B. C.\*
- 9:00 p. m.—Western Artist Series concert.
- 10:00 p. m.—Hotel St. Francis dance orch.

## THURSDAY, APRIL 19

- 6:30 p. m.—Dinner concert, Cafe Marquard.
- 8:00 p. m.—N. B. C.\*
- 11:00 p. m.—Hotel St. Francis dance orch.

## FRIDAY, APRIL 20

- 11:10 a. m.—Elmer Martin, Home Economics.
- 5:30 p. m.—Da-Ra-O, wise man
- 6:25 p. m.—"Weekly Financial Review."
- 6:35 p. m.—Parisian Quintette.
- 8:00 p. m.—N. B. C.\*
- 10:00 p. m.—Hotel Oakland dance orch.

## SATURDAY, APRIL 21

- 6:00 p. m.—"The Home Songsters,"
- 6:30 p. m.—News and baseball.
- 6:40 p. m.—Richards Hawaiians.
- 7:00 p. m.—"A Chat About New Books."
- 7:15 p. m.—Weekly sport review, Al Santoro
- 8:00 p. m.—N. B. C.\*
- 11:00 p. m.—Hotel St. Francis dance orch.

## SUNDAY, APRIL 15

- 11:00 a. m.—First M. E. Church.
- 1:00 p. m.—N. B. C.\*
- 4:00 p. m.—Vesper service.
- 6:30 p. m.—N. B. C.\*
- 7:35 p. m.—First M. E. Church.
- 9:00 p. m.—N. B. C.\*

## MONDAY, APRIL 16

- 3:30 p. m.—Calif. Fed. of Women's Clubs.
- 4:00 p. m.—Hotel St. Francis Dance Orch.
- 5:30 p. m.—Aunt Betty; KGO Kiddies' Klub
- 6:20 p. m.—"What's Happening."
- 6:30 p. m.—General Electric Hour.
- 8:00 p. m.—N. B. C.\*
- 10:00 p. m.—N. B. C.\*

## TUESDAY, APRIL 17

- 10:30 a. m.—N. B. C.\*
- 11:00 a. m.—N. B. C.\*
- 11:15 a. m.—"Everyday Living," Christina S. Madison.
- 6:30 p. m.—N. B. C.\*
- 7:00 p. m.—Dinner concert, Cafe Marquard.

\*See Page 42 for detailed program of National Broadcasting Co.



**RUSSELL SHERWOOD**  
Program Director

# KYA San Francisco, Calif.—830 Kc.

"At the Golden Gate"  
1000 WATTS—361.2 METERS  
Headquarters at the Clift Hotel  
CLAIR MORRISON, Manager RUSSELL SHERWOOD, Prog. Dir.

## DAILY EXCEPT SUNDAY

- 8:00 a. m.—"The KYA Morning Glories," with music and songs.
- 9:00 a. m.—Sally Cooke, the "Better Homes Girl of KYA."
- 11:00 a. m.—California Sunshine Hour.
- 12:00 noon—News Items direct from the Editorial Rooms of the Examiner, except Monday and Thursday.
- 5:30 p. m.—The Golden Gate Cryer, with Carol Soper's Dance Orch.
- 6:00 p. m.—News from the Examiner.
- 6:15 p. m.—The Golden Gate Cryer.
- 10:00 p. m.—Dance Orchestra.

- 11:40 a. m.—Dr. Julian R. Brandon.
- 6:40 p. m.—Thomas Nunan.
- 7:00 p. m.—Anita Lang and others.
- 8:00 p. m.—Ray's Californians and others.
- 9:00 p. m.—Quinlan Twins

## THURSDAY, APRIL 19

- 10:00 a. m.—Musical Program.
- 10:45 a. m.—Prudence Penny.
- 11:40 a. m.—Dr. Julian R. Brandon.
- 7:00 p. m.—Chas. W. Hamp.
- 8:00 p. m.—Sigmund Anker, violin concert.
- 9:00 p. m.—Flor & Claire.

## FRIDAY, APRIL 20

- 10:00 a. m.—Scotty McNeish and Mary Elliott.
- 10:30 a. m.—Dr. Buren L. Corley.
- 7:00 p. m.—Dr. Albertine R. Nash.
- 8:00 p. m.—Examiner Staff Frolic.
- 9:00 p. m.—Metro Trio and soloists.

## SATURDAY, APRIL 21

- 10:00 a. m.—Musical Program.
- 10:30 a. m.—Dr. Buren L. Corley.
- 7:00 p. m.—Examiner Sports Period.
- 8:00 p. m.—Old-Timers' Hour.
- 9:00 p. m.—Casual Hour with Hervey Austin

## SUNDAY, APRIL 15

- 11:00 a. m.—Central Methodist Church.
- 2:30 p. m.—Special Sunday Matinee.
- 6:00 p. m.—Dr. Frederick W. Clampett.
- 7:30 p. m.—Central Methodist Church.

## MONDAY, APRIL 16

- 10:00 a. m.—Georgia O. George.
- 10:30 a. m.—The Forma-Zincol Program.
- 6:15 p. m.—Edgar White Dramatic Critic.
- 7:00 p. m.—Chas. W. Hamp.
- 8:00 p. m.—New Talent Period (six artists).
- 8:30 p. m.—West Coast Theaters Frolic.

## TUESDAY, APRIL 17

- 10:00 a. m.—Bell Laboratory Program.
- 10:30 a. m.—Dr. Buren L. Corley.
- 12:15 p. m.—Tuesday Noon Club.
- 2:00 p. m.—Babette, Fashion Authority.
- 6:40 p. m.—Miles Overholt, poet
- 7:00 p. m.—George Harper and others.
- 8:00 p. m.—Jack Devereaux and others.
- 8:30 p. m.—West Coast Theaters Frolic.
- 9:00 p. m.—Roy Sobey, with Jack McKeekin.

## WEDNESDAY, APRIL 18

- 10:00 a. m.—Chas. W. Hamp.
- 10:30 a. m.—Georgia O. George.

# AEROPLANE LOUDSPEAKER KITS

---

*The Essentials*

BREILLE Motor Units

AERO CLOTH

DRUMTITE CONVERTER

---

*IN STOCK*

**RADIO MANUFACTURERS  
SUPPLY CO.**  
**1000 SOUTH BROADWAY COR 10<sup>TH</sup> ST.**  
OPEN EVENINGS UNTIL 9PM. SATURDAY UNTIL 10PM.



# KFRC San Francisco, Calif.—660 Kc.

Owned and Operated by Don Lee, Cal. Dist. for Cadillac & LaSalle  
1000 WATTS—454.3 METERS

"Keep Forever Radiating Cheer"

Harrison Holliday  
Manager

Frank Moss  
Musical Director

## "MAC"

### DAILY EXCEPT SUNDAY

- 7:00 a. m.—Seal Rock program by Simpy Fitts.  
8:00 a. m.—Studio program.  
9:00 a. m.—Georgia O. George (except Sat.).  
10:00 a. m.—Doings of Dorothy (ex. Thursday, Friday and Saturday).  
11:30 a. m.—Amateur Tryouts (except Sat.).  
12:00 noon—Sherman Clay Concert.  
1:00 p. m.—Stock quotations.  
4:00 p. m.—Educational Talk (except Fri.).  
4:30 p. m.—Organ Recital by Theo Strong, except Saturday.  
5:15 p. m.—San Francisco Call News Items.  
5:30 p. m.—Mac and his Gang.  
6:20 p. m.—Stage, Screen, Police and Lost and Found (except Tues. and Thurs.).  
6:30 p. m.—The Cecilians (ex. Tues. and Fri.).  
11:00 p. m.—Dance Orchestra.

### SUNDAY, APRIL 15

- 10:00 a. m.—Home Sweet Home Concerts.  
12:00 noon—Services and Sermon from the Paulist Fathers' Old St. Mary's Church.  
1:15 p. m.—Sunday recital.  
3:15 p. m.—Walter Krausgrill.

## With the New SHIELD-GRID TUBES



Fits any  
UX Socket  
Price  
\$7.50 Each

## Use BRAXTON-KING Plug-in Shielded R. F. Impedance Units

Packed in sets of three, laboratory matched at 350 KC. Braxton-King Impedances and Shield-Grid tubes produce, in the new B-K Shielded Grid Seven, a remarkable combination of tremendous volume with undistorted tone.

Write for catalog sheets, circuit diagrams and Prices

### OTHER B-K PRODUCTS

King Coils for I-dial Browning Drake list.	\$6.00
Braxton-King Plug-in Intermediate Tr.	4.50
Braxton-King Plug-in Oscillator Coll.	2.00
Braxton-King Shielded R. F. Coils.	2.50

Mississippi Valley Radio Co.  
914 Pine Street, St. Louis, Mo.

Pacific Coast Representative

B. KRUGER & CO.

500 Huntley Drive, West Hollywood OXford 3897

Wholesale Distributors

Yale Radio Electric Co. Howard Radio Distributing Co.

Herbert H. Horn Radio Supply Co.

- 4:15 p. m.—Art Fadden at the Steinway.  
5:00 p. m.—Organ recital.  
6:00 p. m.—Inspirational talk.  
6:30 p. m.—Studio program.  
7:30 p. m.—Concert Orchestra.  
8:30 p. m.—Tom Gerunovich's Roof Orch.  
9:30 p. m.—Song recital; Robert Olsen.  
10:00 p. m.—KFRC Dance Orchestra.  
11:00 p. m.—Walter Krausgrill's Dance Orch.

### MONDAY, APRIL 16

- 9:30 a. m.—Weinstock-Lubin & Company Shopping Service.  
11:00 a. m.—Household Hints.  
1:05 p. m.—"Mothercraft Club."  
3:00 p. m.—KFRC Concert Orchestra.  
7:00 p. m.—Cecilians.  
8:00 p. m.—Blue Monday Jamboree.  
10:00 p. m.—Hotel Mark Hopkins Orchestra.

### TUESDAY, APRIL 17

- 11:00 a. m.—Studio program.  
3:00 p. m.—KFRC Concert Orchestra.  
4:15 p. m.—Florence Garden "Women in Business."  
6:25 p. m.—Stage & Screen & U. S. Weather.  
6:30 p. m.—Sports talk by "Bobs."  
7:00 p. m.—Charles Hamp entertains.  
8:00 p. m.—Haas Candy Stores "Sweetheart Hour."  
9:00 p. m.—Musical program.  
10:00 p. m.—Mark Hopkins' Dance Orch.

### WEDNESDAY, APRIL 18

- 11:00 a. m.—Household Hints.  
3:00 p. m.—KFRC Concert Orchestra.  
7:00 p. m.—The Cecilians.  
8:00 p. m.—Maxwell House Coffee Orchestra  
9:00 p. m.—Goodrich Silvertown Melody Hr.  
10:00 p. m.—Pacific Goodrich Silvertown Cord Orchestra, Robert Olsen.

### THURSDAY, APRIL 19

- 10:00 a. m.—Shopping Service.  
11:00 a. m.—Charles Hamp  
1:00 p. m.—"Mothercraft Club,"  
6:20 p. m.—Beauty talk by Madame Marie.  
6:30 p. m.—Stage and Screen and U. S. Weather Bureau reports, stock quotations.  
7:00 p. m.—Concert Orchestra—Bennie Lipston and Leo Maloney and assisting artists.  
9:00 p. m.—Request program for "Tea-Three."  
9:30 p. m.—Nuptial music.  
10:00 p. m.—Roof Garden Orchestra.

### FRIDAY, APRIL 20

- 9:30 a. m.—Shopping Service.  
10:00 a. m.—Shopping Service.  
11:00 a. m.—Hints to Home-makers.  
1:00 p. m.—KFRC Concert Orchestra.  
4:00 p. m.—Garden talk by F. S. Davis.  
5:00 p. m.—San Francisco News Items.  
5:15 p. m.—Mac and his Gang.  
5:45 p. m.—Joe Mendel and his Pep Band.  
6:30 p. m.—Sports talk by "Bobs."  
7:00 p. m.—Charles Hamp.  
8:00 p. m.—Ballads and comedy song music.  
9:00 p. m.—Concert Orchestra.

### SATURDAY, APRIL 21

- 10:00 a. m.—Studio program.  
11:00 a. m.—Amateur Auditions.  
11:45 a. m.—Announcements of Sunday Church Sermon.  
2:00 p. m.—KFRC Concert Orchestra.  
7:00 p. m.—The Cecilians.  
8:00 p. m.—Studio program.  
9:00 p. m.—Walter Krausgrill's Dance Orch.  
12:00 midnight—Organ program by Leigh Harline; Wint Cotton, tenor.

# Why Not Improve Your Radio Reception?

*Increase the Power of Your Set.*

*Get More Distance.*

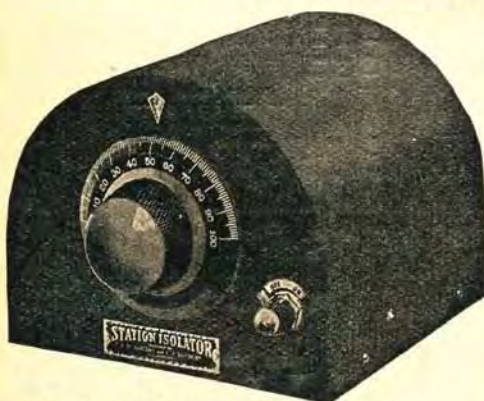
*Stop Overlapping of Locals.*

No matter what set you have, if a Station Isolator can be used with it you can prevent all overlapping of local stations. You can be assured of getting the program you want, clear, clean cut, with improved tone, and without interference. Radio sets four and five years old have been modernized with Station Isolators and are now giving good service.

We especially recommend Model "A" Station Isolator with the Atwater Kents named below and with the Crosley Band Box.

The Station Isolator increases the power and sensitivity of your receiver, and thus increases the distance range as well as giving better reception on coast stations. It is an accessory that, once tried, you would not be without.

*Sold by Dealers Everywhere*



**Sargent-Rayment Station Isolator**

Buy it on a five-day, money-back trial

### Notice These Exclusive Features:

No need to break into wiring of your set. Station Isolator attaches externally.

Can be installed by a novice in five minutes.

On-Off Switch for Convenience. You can use your set either with or without the Station Isolator.

Designed by the Inventors of the Infradyne.

## Try One Yourself and Be Convinced!

You cannot really appreciate what the Station Isolator will do for you until you actually try one. Visit your dealer today and get the model needed for your set. You can install it yourself, demonstrate it to yourself by means of the On-Off Switch, and see what a difference it makes in your reception.

### PRICES:

Use Model "A," Price \$10.00, for Radiola 16 and 17, Apex, Atwater Kent No. 30, 32, 35, 37, Stewart-Warner Simple Dial, Crosley Bandbox, Freshman Equaphase. (Note—Radiola 17 requires line filter also, \$7.00 extra.)

For all other sets that use an antenna and 6 volt "A" supply, use Model "T." Price \$12.50 (requires one CX-301-A tube, \$1.50 extra).

If your dealer cannot supply you, pin your check to this ad and mail it to us. We will send you one by return mail.

**Radio Constructors Corporation, 357 12th St., Oakland, Cal.**



STEPHEN I. GAYLORD

# KGW Portland, Oregon—610 Kc.

1000 WATTS—191.5 METERS  
THE MORNING OREGONIAN  
"Keep Growing Wiser"

## DAILY EXCEPT SUNDAY

10:00 a. m.—Town Crier, weather reports, news items.  
6:00 p. m.—Dinner Concert, except Monday and Friday.  
9:00 p. m.—Longine Watch Time Signals.

## WEDNESDAY, APRIL 18

7:15 a. m.—Y. M. C. Health Exercises.  
9:45 a. m.—Setting-up Exercises.  
6:00 p. m.—Concert Trio.  
6:30 p. m.—N. B. C.\*  
7:00 p. m.—Concert.  
7:30 p. m.—Albers Bros. Poultry Talk.  
7:45 p. m.—Book Chat.  
8:00 p. m.—N. B. C.\*  
9:30 p. m.—Concert.  
10:00 p. m.—N. B. C.\*  
11:00 p. m.—Olympic Hotel Orch.

## THURSDAY, APRIL 19

6:00 p. m.—Concert.  
6:30 p. m.—"Golden West Girl."  
7:30 p. m.—Concert.  
8:00 p. m.—N. B. C.\*  
9:30 p. m.—Dodge Bros. program.  
10:00 p. m.—N. B. C.\*

## FRIDAY, APRIL 20

7:15 p. m.—Y. M. C. A. Health Exercises.  
9:45 p. m.—Setting-up Exercises.  
6:00 p. m.—"Red and White Jesters."  
7:00 p. m.—Concert Orchestra.  
8:00 p. m.—N. B. C.\*  
10:30 p. m.—Frolie of the Keep Growing  
Wiser Order of Hoot Owls.

## SATURDAY, APRIL 21

6:00 p. m.—Dinner concert.  
7:00 p. m.—Concert.  
8:00 p. m.—N. B. C.\*  
10:00 p. m.—N. B. C.\*

## SUNDAY, APRIL 15

11:00 a. m.—Morning services.  
3:00 p. m.—N. B. C.\*  
6:30 p. m.—N. B. C.\*  
7:30 p. m.—The Two Steinway Artists.  
8:00 p. m.—"Franz Fantasies."  
9:00 p. m.—N. B. C.\*  
9:30 p. m.—Grout Chevrolet concert.  
10:00 p. m.—Little Symphony Orchestra.

## MONDAY, APRIL 16

7:15 a. m.—Y. M. C. R. Health Exercises.  
6:00 p. m.—"The Home Warmers."  
7:00 p. m.—"The Organians."  
7:30 p. m.—"Better Flowers" talk.  
7:45 p. m.—Utility Service.  
8:00 p. m.—N. B. C.\*  
10:00 p. m.—N. B. C.\*

## TUESDAY, APRIL 17

10:30 a. m.—N. B. C.\*  
11:15 p. m.—Town Crier.  
6:00 p. m.—Voters Service Program.  
6:30 p. m.—Checker Cab Co. program.  
7:00 p. m.—"Sealy Sam Program."  
7:30 p. m.—Crescent Coffee Program.  
8:00 p. m.—N. B. C.\*  
9:00 p. m.—Maxwell House Coffee Orch.  
10:00 p. m.—N. B. C.\*

\*See Page 42 for detailed program of National Broadcasting Co.

## A Government "O-Kay"

None other than our old friend G. H. Preston (in the flesh) writes us from Tacoma, Washington, that the United States Government is using the Preston Permanent Ground. He quotes Mr. C. G. Thompson, Superintendent of the National Park Service, as follows:

"The Preston Grounds have proven very efficient with us and a great money saver. Where we used 4 miles of telephone wire to run to ground from Lookout station to top of Mount Scott, an elevation of 8939 feet, we simply buried Preston Ground and used 10 feet of wire. We will continue to use these grounds hereafter."

Incidentally, while touring the Great Northwest, Mr. Preston has installed his ground on KMO, Tacoma, with excellent results, eliminating two series condensers and increasing distance, volume and tone 25%. From Tacoma he will swing around to the following stations, installing a Preston Ground at each: KFOA, Seattle; KGY, Lacey, Wash.; KMED, Medford, Ore.; KRLO,

Aberdeen, Wash., and KFBK, Sacramento, Cal.

## Believe It or Not!

In the wee sma' hours of April 1—1:00 A. M. to be exact—a truly remarkable re-broadcast was pulled off, with two extremities of our big country participating, to wit:

At the Zenith Radio Agency, 1242 Vine St., Hollywood, Cal., 9XF, Chicago (the new 50,000 Watter we mentioned in our last issue), was received on a Zenith Model 18-E. Nothing remarkable about that, to be sure, but listen: It was telephoned to KNX, re-broadcast by that station, and received by a DX maniac 'way up in the Maple Sugar Belt of New Hampshire! This snow-bound Yank telephoned it to WAAM, Newark, N. J., who re-broadcast again. Meanwhile the distance bound telephoned to 9XF, apprising them of what he had done and confirming program. All those wishing to argue over this telephone HEMPEstead 2504 and ask for F. Clay McConnell or K. P. Kelly!





Mrs. J. Webster Hoover  
Program Director

# KJR Seattle, Washington—860 Kc.

604 Home Savings Building, 1520 Westlake Ave.  
2500 WATTS—348.6 METERS. Phone Main 2475  
Operated by the American Broadcasting Co.  
Mrs. J. Webster Hoover, Pro. Director

### DAILY EXCEPT SUNDAY

- 9:00 a. m.—Mary Cooke, KJR Better Homes Girl, and Time Signals.
- 9:45 a. m.—Devotional Service.
- 10:00 a. m.—Shopping Service and Musical Program.
- 12:00 noon, 6:00 p. m. and 10:00 p. m.—Pacific Standard Time.
- 12:00 noon—Varied studio program. (Except Tues., Wed. and Fri.)
- 5:00 p. m.—KJR Junior Hours.
- 5:30 p. m.—Studio program. (Except Tues., Wed. and Fri.)
- 5:45 p. m.—New York Closing Stock Quotations.
- 6:00 p. m.—Sports, News Items, Theater.
- 6:30 p. m.—Vic Meyer's Dinner Hour Concert (except Monday).
- 10:00 p. m.—Vic Meyer's Dance Orchestra.

### SUNDAY, APRIL 15

- 9:00 a. m.—Time signals Musical program.
- 9:55 a. m.—International Bible students.

### MONDAY, APRIL 16

- 5:30 p. m.—National Humane Week—talk.
- 7:30 p. m.—Charles Schultz, Blues.
- 8:00 p. m.—Studio program.
- 8:30 p. m.—Seattle Pacific College.

### TUESDAY, APRIL 17

- 12:20 p. m.—Studio program.
- 12:30 p. m.—Ad Club luncheon program.
- 1:30 p. m.—Varied studio program.
- 4:45 p. m.—KJR Improvement Club.
- 5:30 p. m.—National Humane Week—talk.
- 7:30 p. m.—Seymore Wood, baritone.
- 8:00 p. m.—Lundquist-Lilly, Two-Pant Twins.
- 9:00 p. m.—Simultaneous broadcast.

### WEDNESDAY, APRIL 18

- 12:00 p. m.—Ruth Hurlbut, soprano.
- 12:30 p. m.—Varied studio program.
- 7:30 p. m.—Studio program.

### THURSDAY, APRIL 19

- 12:30 p. m.—Luncheon program.
- 1:30 p. m.—Varied studio program.
- 7:30 p. m.—"Fireside Hour," with Lady Orchestra.
- 8:30 p. m.—"ABC" Chain broadcast.

### FRIDAY, APRIL 20

- 12:00 p. m.—Music Appreciation talk.
- 12:20 p. m.—Varied studio program.
- 4:45 p. m.—KJR Improvement Club.
- 7:30 p. m.—Old Time Dance Orchestra.
- 8:00 p. m.—Educational program.
- 8:15 p. m.—Simultaneous broadcast.
- 9:00 p. m.—Studio program.

### SATURDAY, APRIL 21

- 7:30 p. m.—Studio program.



JOHN H. BARNET  
Announcer and Prog.  
Director

# KEX Portland, Oregon—1080 Kc.

2500 WATTS—277.6 METERS  
Owned, American Broadcasting Company  
Terminal Sales Building

F. C. Dahlquist  
President  
  
John H. Barnet  
Program Director  
  
Byron Gilkinson  
Manager

- 9:00 p. m.—International Bible Students.

### MONDAY, APRIL 16

- 3:30 p. m.—Music Appreciation.
- 4:00 p. m.—Recording Concert.
- 7:00 p. m.—Studio program.
- 8:00 p. m.—Musical.
- 10:00 p. m.—Monday Night Review.

### TUESDAY, APRIL 17

- 12:30 p. m.—Kiwanis Luncheon broadcast.
- 1:30 p. m.—Recording Concert.
- 5:00 p. m.—Concert.
- 8:00 p. m.—Studio program.
- 8:30 p. m.—"Merry Maytag Ramblers."
- 9:00 p. m.—Studio program.

### WEDNESDAY, APRIL 18

- 6:45 a. m.—The Church in the Wildwood.
- 3:30 p. m.—Music Appreciation.
- 4:00 p. m.—Recording Concert.
- 8:00 p. m.—Studio program.
- 9:00 p. m.—Musical.

### THURSDAY, APRIL 19

- 6:15 p. m.—Concert for Dempsey-Kimsey Downs.
- 8:00 p. m.—Catholic Truth Society.
- 8:30 p. m.—"ABC" Chain broadcast.

### FRIDAY, APRIL 20

- 3:30 p. m.—Music Appreciation.
- 4:00 p. m.—Recording Concert.
- 4:30 p. m.—Elks' program for Shut-ins.
- 5:00 p. m.—Concert.
- 6:15 p. m.—Horticultural Talk.
- 8:00 p. m.—"ABC" Chain broadcast.
- 8:15 p. m.—Simultaneous broadcast.
- 9:00 p. m.—"Goin' Fishin'" Club.
- 9:10 p. m.—O. M. Plummer.
- 9:20 p. m.—Concert of Favorite Songs.

### DAILY EXCEPT SUNDAY

- 9:00 a. m., 12 noon and 10 p. m.—Western Union Time Signals, weather reports, etc.
- 9:00 a. m.—Pattie Cooke, KEX Better Homes Girl.
- 10:00 a. m.—Morning Devotional Service.
- 10:15 a. m.—KEX Shopping Guide.
- 12:00 noon—Concert.
- 1:00 p. m.—Recording Concert (except Tues. and Sat.).
- 5:30 p. m.—Gabriel Snubber Sales & Service Concert.
- 6:00 p. m.—News, Stock Reports, Time Signals.
- 6:30 p. m.—Sperry Flour Children's Hour, "Grandpa Bulger" (except Saturday).
- 7:00 p. m.—Dinner Dance Concert (except Monday).
- 10:00 p. m.—Dance Frolic (except Monday).

### SUNDAY, APRIL 15

- 4:30 p. m.—Recording Concert.
- 6:00 p. m.—Dinner Concert.
- 7:00 p. m.—Catholic Truth Society.
- 7:30 p. m.—Presbyterian Church Service.
- 8:00 p. m.—American Plan program.



ARTHUR W. LINDSAY  
Announcer

# KFOA

P. B. Gale  
Station Manager  
Arthur W. Lindsay  
Program Dir. & Announcer  
Ward J. Ireland  
Announcer  
H. M. Currie  
Station Operator  
Frederick C. Ferlinger  
Musical Director  
Gertrude Hageman  
Program Clerk  
Edward Fitzgerald  
Commercial Manager

## DAILY EXCEPT SUNDAY

- 10:00 a. m.—Rhodes' Air News  
10:30 a. m.—Dorothy Neighbors, presented by Seattle Daily Times.  
12:00 noon—Rhodes' Organ Recital.  
2:15 p. m.—Baseball Games (ex. Monday).  
5:30 p. m.—New and Weather Report (ex. Monday).  
6:00 p. m.—Sperry Flour Sightseeing Hour. (ex. Saturday).  
9:00 p. m.—Longine Time Signals.

## SUNDAY, APRIL 15

- 1:00 p. m.—N. B. C.\*  
2:00 p. m.—Baseball game—Seattle vs. Sacramento.  
5:00 p. m.—Longine time Signals.  
5:00 p. m.—Concert orchestra.  
5:30 p. m.—Organ recital by C. Ferlinger.  
6:30 p. m.—N. B. C.\*  
9:00 p. m.—N. B. C.\*

## MONDAY, APRIL 16

- 12:00 p. m.—Hi-Twelve Luncheon program.  
1:30 p. m.—Messages from Sarah Hodnett.  
6:30 p. m.—Studio program.  
7:15 p. m.—Industrial news.  
7:30 p. m.—Better flowers educational talk.  
7:45 p. m.—"Something About Everything."  
8:00 p. m.—N. B. C.\*  
9:00 p. m.—Rhodes organ recital.  
9:30 p. m.—N. B. C.\*  
10:00 p. m.—N. B. C.\*

## TUESDAY, APRIL 17

- 11:00 a. m.—N. B. C.\*  
12:30 p. m.—Kiwanis Club luncheon program.

## Seattle, Wash.—670 Kc.

447.5 METERS—1000 WATTS

Owned and Operated by Rhodes Department Store  
Arcade Square, Seattle, Washington. Phone MAIN 8000

- 1:30 p. m.—"Notes From the Skipper's Log."  
8:30 p. m.—Half hour dinner concert.  
7:00 p. m.—"Under the Crescent Moon."  
8:00 p. m.—N. B. C.\*  
8:30 p. m.—N. B. C.\*  
9:00 p. m.—Maxwell House Coffee Orch.  
10:00 p. m.—"Something About Everything."

## WEDNESDAY, APRIL 18

- 12:30 p. m.—Rotary Club Luncheon program.  
1:30 p. m.—Messages from Sarah Hodnett.  
6:30 p. m.—N. B. C.\*  
7:00 p. m.—Variety program.  
7:30 p. m.—Albers Bros. Poultry Talk.  
7:45 p. m.—Book chat by Helmer L. Webb.  
8:00 p. m.—N. B. C.\*  
8:30 p. m.—N. B. C.\*

## THURSDAY, APRIL 19

- 12:30 p. m.—Shrine Club luncheon program.  
1:30 p. m.—"Notes From the Skipper's Log."  
6:30 p. m.—"Golden West Girl and Her Orchestra."  
7:30 p. m.—Sunde and d'Evers Duo.  
8:00 p. m.—N. B. C.\*  
9:00 p. m.—N. B. C.\*  
9:30 p. m.—N. B. C.\*  
10:00 p. m.—N. B. C.\*

## FRIDAY, APRIL 20

- 12:30 p. m.—Members Council Luncheon program.  
1:30 p. m.—Messages from Sarah Hodnett.  
6:30 p. m.—Variety program.  
7:00 p. m.—"Who's Who in Society Candy-land."  
8:00 p. m.—N. B. C.\*  
9:00 p. m.—N. B. C.\*  
9:30 p. m.—N. B. C.\*  
10:00 p. m.—N. B. C.\*  
10:30 p. m.—Frolic of the Keep Growing Wiser Orce of Hoot Owls.

## SATURDAY, APRIL 21

- 6:00 p. m.—Sport revue.  
6:50 p. m.—"Something About Everything."  
7:00 p. m.—Boy Scout Program.  
7:30 p. m.—Camp Fire Girls Program.  
8:00 p. m.—N. B. C.\*  
9:00 p. m.—N. B. C.\*  
10:00 p. m.—N. B. C.\*

\*See Page 42 for detailed program of National Broadcasting Co.

# RADIOLA SPECIALISTS

Have a licensed power pack and amplifier installed in your Radiola 28. No batteries, no messy acids. It makes your 28 the equivalent of the 30.

If your Radiola 28 or your Radiola 20 is out of balance, its selectivity and distance are greatly impaired. We make them perform like they should.

Why not convert your Radiola 30 into a 32 by the installation of the new Dynamic Speaker?

## LABORATORY OF RADIO STANDARDS

E. K. HAYES

2408 West Vernon

Vermont 6543

Los Angeles, Calif.



**CECIL P. UNDERWOOD**  
Chief Announcer

# KHQ Spokane, Washington—810 Kc.

1000 WATTS—370.2 METERS  
LOUIS WASMER, INC. Studio in the Davenport Hotel

DAILY EXCEPT SUNDAY AND WEDNESDAY

- 7:00 a. m.—Baily's Period of Pep and Calisthenics.
- 7:30 a. m.—Inspirational Service.
- 7:45 a. m.—Breakfast Program.
- 8:30 a. m.—Inland Empire Road Reports.
- 9:00 a. m.—Household Service—Tull & Gibbs.
- 9:57 a. m.—A & K Educational Talk.
- 10:00 a. m.—Sara Leigh's Hour with Women.
- 11:00 a. m.—Farmer's Service Hour, except Thursday.
- 1:00 p. m.—Happy Hour, except Wednesday.
- 2:00 p. m.—Crystal Twins, except Tuesday and Friday.
- 3:00 p. m.—The Monogram Hour.

- 4:00 p. m.—The Home Beautiful.
- 4:30 p. m.—Bailey's Latest Recordings.
- 5:00 p. m.—Service Hour.
- 6:00 p. m.—Mahlon Merrick's Concert Orch.
- 9:00 p. m.—Longine Correct Time.

**SUNDAY, APRIL 15**

- 10:30 a. m.—Sunday School Program.
- 11:00 a. m.—Central M. E. Church.
- 1:00 p. m.—N. B. C.\*
- 2:00 p. m.—Happy Hour.
- 3:00 p. m.—N. B. C.\*
- 5:00 p. m.—Longines Correct Time.
- 5:00 p. m.—Program by Bailey's, Inc.
- 6:00 p. m.—Kolster Concert.
- 6:30 p. m.—N. B. C.\*
- 7:30 p. m.—Church services.
- 9:00 p. m.—N. B. C.\*
- 9:30 p. m.—International Bible Students.

**MONDAY, APRIL 16**

- 6:15 p. m.—Mr. Ben Cohn, Travelogue.
- 6:30 p. m.—Organ Recital with soloists.
- 8:00 p. m.—Over P. C. N.\*
- 10:30 ap. m.—Spokane Coyotes.

**TUESDAY, APRIL 17**

- 11:00 a. m.—N. B. C.\*
- 11:15 a. m.—Farmers' Service Hour.

\*See Page 42 for detailed program of National Broadcasting Co.

- 2:00 p. m.—An Hour with "Miss Spokane."
- 6:30 p. m.—N. B. C.\*
- 7:00 p. m.—"Under the Crescent Moon."
- 8:00 p. m.—N. B. C.\*
- 9:00 p. m.—Maxwell House Concert Orch.
- 10:00 p. m.—Dance music.

**WEDNESDAY, APRIL 18**

- 6:30 p. m.—N. B. C.\*
- 7:00 p. m.—Mahlon Merrick and his Orch.
- 8:30 p. m.—N. B. C.\*

**THURSDAY, APRIL 19**

- 6:30 p. m.—The Golden West Girl
- 7:30 p. m.—Europe, by Mr. Ben Cohn.
- 9:00 p. m.—N. B. C.\*
- 10:00 p. m.—Dance music

**FRIDAY, APRIL 20**

- 2:00 p. m.—An Hour with "Miss Spokane."
- 7:15 p. m.—Europe, by Mr. Ben Cohn.
- 8:00 p. m.—N. B. C.\*
- 9:00 p. m.—Izaak Walton League program.
- 9:30 p. m.—N. B. C.\*

**SATURDAY, APRIL 21**

- 7:15 p. m.—Europe, by Mr. Ben Cohn.
- 8:00 p. m.—N. B. C.\*
- 10:00 p. m.—Dance music



**CARRIE ANDREW**  
Announcer

# KGA Spokane, Washington—1150 Kc.

2670 METERS—2000 WATTS  
Operated by the American Broadcasting Co., located in the Old National Bank, Spokane, Washington  
H. E. Studebaker, Studio Manager

Carrie Andrew  
Announcer  
H. E. Studebaker  
Studio Manager

- 6:00 p. m.—Time Signals.
- 6:01 p. m.—Service talk with music.
- 7:30 p. m.—Music (except Monday).
- 10:00 p. m.—Dance music.

**SUNDAY, APRIL 15**

- 11:00 a. m.—First Presbyterian Church:
- 12:30 p. m.—Musical program.
- 1:00 p. m.—Talk on Psychology.
- 7:30 p. m.—First Presbyterian Church.

**MONDAY, APRIL 16**

- 11:00 a. m.—Shopping Service.
- 5:00 p. m.—Health talk.

**TUESDAY, APRIL 17**

- 2:00 p. m.—Chronicle Home Management School.
- 4:00 p. m.—Musical program and news.
- 9:00 p. m.—Simultaneous broadcast.

**WEDNESDAY, APRIL 18**

- 11:00 a. m.—Shopping Service.
- 8:30 p. m.—Varied musical programs.

**THURSDAY, APRIL 19**

- 8:30 p. m.—"ABC" Chain broadcast.

**FRIDAY, APRIL 20**

- 11:10 a. m.—Shopping Service.
- 12:30 p. m.—Varied musical programs.
- 8:15 p. m.—Simultaneous broadcast.
- 9:00 p. m.—Musical program.

**SATURDAY, APRIL 21**

- 8:00 p. m.—U. S. Government Business
- 8:15 p. m.—Musical program.

- DAILY EXCEPT SUNDAY**
- 8:57 a. m.—Time Signals.
- 9:00 a. m.—Betty Cooke, KGA Better Homes Girl.
- 10:00 a. m.—Musical program.
- 11:00 a. m.—Dietetic Talk by Harriet Klein (except Tuesday, Thursday and Saturday).
- 11:00 a. m.—Shopping Service (except Tues., Thurs. and Sat.).
- 12:00 noon—Time Signals.
- 12:01 p. m.—Weather Forecast.
- 12:15 p. m.—Logan and Bryan Grain Quotations; Livestock Quotations.
- 12:20 p. m.—Musical program (except Mon., Wed. and Fri.).
- 12:20 p. m.—U. S. Radio Farm School (except Tues., Thurs. and Sat.).
- 5:15 p. m.—Kiddies' Half Hour featuring Uncle Andy.

## Hayes

(Continued from Page 31)

become a nerve-shattered wreck,—old before his time.

"We found E. K. fat and sassy, calmy putting together another "Maggie," and seemingly enjoying life to the fullest. We managed to ask a few questions regarding supers in general, and this one in particular.

"Wall, I'll tell you how 'tis," he said. "I've put about 250 of these Magnaformer coils on the oscillator and checked their peak frequency, and I've never found one yet that was off far enough to worry about, and I'll gamble you could take any two of all the sets I've built and you couldn't detect any difference between them in performance. And when I find a kit super that is so consistent and reliable and makes satisfied customers for me,—I stick to it!" And you can't blame him, at that.

A Magnaformer, equipped with the larger type Ferranti transformers and playing a Lansing type C cone speaker, was furnishing musical accompaniment to Hayes' line of chatter, and the sputtering of his soldering iron. And when I say musical, I mean it—that combination produces real music. The Lansing was tested beside some big power speakers, and came through with flying colors, equalling the big fellows in tone range and quality, and even surpassing them in all-round enjoyability.

"The set not only has 'It,' but it has everything. I've brought in the Ausies and Japs right here in this stucco building, and that degree of sensitivity is combined with 10 kilocycle selectivity, and the tone you're hearing now."

Incidentally, this chap, Hayes, is a top-notch expert on superheterodynes, and knows what he is talking about. In fact, he darned near sold me one of the 9-8's, in spite of the fact that I've still got the first one that ever came out to the Pacific Coast.

## WANTED

FIRST CLASS RADIO SERVICE  
MAN take charge department old  
established company. Salary and  
commission. Investment necessary.  
Address Box A, Radio Doings.

## Improved A.C. Detector Developed

B. Kruger, factory representative of the C. E. Mfg. Company of Providence, R. I., is in receipt of a letter from the factory which reads, in part, as follows:

"After considerable experimentation we have decided upon a new method of constructing the A.C. tube type N-27. This consists of the cathode being made of silicate rather than isolantite, and we have found that it greatly prolongs the life of this particular type.

"The main complaint on all tubes of this type has been due to their short life, and we feel safe in saying that the new tubes now coming through the factory will outlast any tubes of this type now manufactured."

## Wesholly Aerial

The cage type of antenna was first used by the Navy, where it was necessary to hang up a lot of wire in a comparatively small space. In transmission, particularly where a definite amount of radiating surface is necessary, together with definite inductance and capacity values, it was found that the cage construction would meet these requirements and take up less space than the types previously used.

Amateurs have been using cages quite extensively in their work, particularly on short waves, and lately this type of antenna has been coming more and more into use by the broadcast fans.

While experimenting with the cage type of aerial, J. K. Davis of the Sunset Manufacturing Company conceived the idea of using copper cones in place of the end hoops of the cage and to fill the intervening space with copper screening instead of four or six wires. The complete ensemble is then heavily lacquered to prevent corrosion. This permits of obtaining good energy pick-up in still smaller space.

After all, the real problem in antenna construction is to pick up as much energy as possible without having the antenna of such dimensions that selectivity is impaired. Mr. Davis claims that his Wesholly aerial meets this requirement,—giving the maximum signal without spoiling selectivity.

## Timely Trade Topics

Mr. J. R. Wyatt, recently with A. J. Tobey, Inc., of Los Angeles, has resumed his old relations with the French Battery Company. Mr. Wyatt, in the capacity of special representative will cover the entire Pacific Coast, calling on the various distributors and assisting the local salesmen in their calls on the retail trade.

D. W. Smith, formerly associated with the Long Radio Co., of this city, is now affiliated with the Trojan Radio Corp. of 5006 S. Broadway, manufacturers of the Trojan Console, an all-electric six-tube receiver, embodying the latest in this type of radio.

As evidence of the large demand for Gosilco aerial wire, the Gosilco Radio Products Co. of Huntington Park is the largest consumer of gold chloride on the Pacific Coast and Western States. In addition to the great number of fans using this specially treated aerial wire, a number of the largest radio broadcast stations employ it as part of their equipment. The Lowe Observatory at Flagstaff, Ariz., has recently included Gosilco in the construction of some of its sensitive precision instruments, which attests the merit for which Gosilco products are so universally known.

The Aerofonic Mfg. Co., manufacturers of the Aerofonic Air Column speakers, have recently completed an up-to-date demonstration room in their new plant at Hill and 35th Streets and have now under construction a completely equipped laboratory for unit testing and speaker designing, with their present equipment and engineering department, being able to manufacture specially designed speakers for the various set manufacturers of the Pacific Coast.

Under the title of WHAT B ELIMINATOR SHALL I BUILD? there has just been published an interesting book, consisting of thirty-two pages, which gives instructions and illustrations on the use of variable wire wound resistances, in such nationally known power supply units as Thordarson, Samson, National, Amertran and Silver-Marshall.

Of the many advantages gained by the use of good variable wire wound resistances, the most important is the fact that definite detector, radio frequency and audio B voltages can be obtained for various sets, making the power supply devices more universal in their use. This is very important with superheterodyne sets, for the reason that the 45 and 90-volt taps should be variable. Electrad, Inc., 175 Varick street, New York, will be very pleased to send this book upon request.

The All American Radio Company and the Mohawk Radio Corporation announce that they have consolidated. The new concern will be known as All American-Mohawk Radio Corporation.

Walter Saint, sales manager of Birch-Smith Furniture Co., exclusive downtown Sparton dealer, returned to duty once more after an illness of several weeks in the hospital.

A company that stays to the exclusive distribution of one set seems to profit more than the companies that are handling many different sets. The Kimberly Radio Corporation of Chicago are exclusive Chicago distributors of Zenith sets. They have just declared a 50 per cent cash dividend, which we say is some dividend.

Mr. Adams of the A. & A. Furniture Co. is again "on the job" after having been off duty several weeks on a well-earned vacation.

### POWER TRANSFORMER HEADQUARTERS

Transformers Built for CX310, UX210, L-10, CX350, UX250, L-50

Repairs On All Dynamic Speakers

Distributed by—Yale Radio Electric Co., Radio Supply Co., C. C. Lawton Co.

**CALIFORNIA TRANSFORMER COMPANY**

1135 WALL ST.

WEStmore 3960

LOS ANGELES



**FREEMAN H. TALBOT**  
Announcer

# KOA

5000 WATTS—326 METERS GENERAL ELECTRIC COMPANY  
Pacific Standard Time  
"Rocky Mountain Broadcasting Station"

## DAILY EXCEPT SUNDAY—

- 11:00 a. m.—Time Signals.  
11:01 a. m.—Weather, Stock and Produce Reports.  
11:15 a. m.—Organ Recital.  
4:00 p. m.—Stock and Market Reports (except Mon. and Sat.).  
4:25 p. m.—Road Reports, courtesy Rocky Mountain News and Denver Evening News (except Monday, Wednesday and Saturday).

- 7:00 p. m.—Scheuerman's Colorado Orch.  
7:15 p. m.—The Denver Ladies' String Quartette.  
9:00 p. m.—Arabian Room Orchestra.

## SUNDAY, APRIL 15

- 10:00 a. m.—Central Presbyterian Church.  
3:20 p. m.—Organ Recital.  
4:20 p. m.—Capitol theater family, N. B. C.  
5:15 p. m.—Collier's Radio Hour, N. B. C.  
6:15 p. m.—Brown Palace Hotel Orchestra.  
6:45 p. m.—Central Presbyterian Church.

## MONDAY, APRIL 16

- 4:30 p. m.—Roxy theater, N. B. C.  
5:00 p. m.—"Great Moments in History," N. B. C.  
5:30 p. m.—Stocks, markets, livestock.  
5:55 p. m.—Road reports.  
6:00 p. m.—"Riverside Hour," N. B. C.  
6:30 p. m.—Brown Palace Hotel Orchestra.  
7:0 p. m.—Scheuerman's Colorado Orchestra.  
7:15 p. m.—Denver Little Symphony Orch.  
8:15 p. m.—Negro spirituals.  
8:45 p. m.—KOA Orchestra.

## TUESDAY, APRIL 17

- 2:30 p. m.—Housewives' matinee.  
3:30 p. m.—Radiograms.  
5:00 p. m.—Stromberg Carlson, N. B. C.  
5:30 p. m.—Seiberling Singers, N. B. C.  
6:00 p. m.—Brown Palace Hotel Orchestra.  
6:30 p. m.—Farm Question Box.

## WEDNESDAY, APRIL 18

- 4:30 p. m.—Savoy Plaza Dinner Music, N. B. C.  
4:45 p. m.—Frederick William Wile, N. B. C.  
6:00 p. m.—Ipana Troubadours, N. B. C.  
6:30 p. m.—Brown Palace Hotel Orchestra.

## THURSDAY, APRIL 19

- 2:30 p. m.—Rural Schools, State Department of Public Instruction.  
3:00 p. m.—Housewives' matinee.  
3:30 p. m.—"The Morning Post Styleogram."  
3:45 p. m.—"Child Health" talk.  
4:00 p. m.—Bonnie Laddies vocal trio, N. B. C.  
5:00 p. m.—Dodge Bros.' Hour, N. B. C.  
5:30 p. m.—Brown Palace Hotel Orchestra.  
6:30 p. m.—Maxwell House Coffee Hour, N. B. C.

## SILENT NIGHT.

## FRIDAY, APRIL 20

- 2:30 p. m.—Housewives' matinee.  
3:30 p. m.—Radiograms.  
4:30 p. m.—"Old Melodies and New," N. B. C.  
5:00 p. m.—Orchestra and Cavaliers, N. B. C.  
6:00 p. m.—Whittall's Anglo Persians, N. B. C.  
6:30 p. m.—Extension service, Colorado Ag. College.  
7:00 p. m.—Solitaire Hour.  
7:30 p. m.—Musical Program.

## SATURDAY, APRIL 21

- 4:00 p. m.—Hawaiian Orchestra, N. B. L.  
4:30 p. m.—Pennsylvania Hotel Dance Orchestra, N. B. C.  
5:00 p. m.—RCA Hour, N. B. C.  
6:00 p. m.—Preview of International Sunday School lesson.  
8:00 p. m.—Dance Program.

**Golden Bear** AIR COLUMN SPEAKER

Beware of Imitations  
Westmore 2712

# SILVER THE KING

24 Kt Gold  
Pure Silver  
Soft  
Copper

**Gosilco Super Aerial Wire**  
Gold over Silver on Copper

Greatly increased DX Range, 35% More Volume—Clearer Tone—25% Sharper Tuning—Non-Corrosive, Lacquered to Retain Brilliance. Endorsed by Major Mott, Ormiston, Best, Cockaday, Garver of KNX. A permanent investment. No. 14, 100 ft., \$4.00; 75, \$3.25; 50, \$2.50. Pat. App'd for.

If Dealer is out, order direct.

**GOSILCO RADIO PRODUCTS CO.**  
320 Marbrisa Ave., Huntington Park, Cal.

*What is your favorite station? You can keep  
it on the air by patronizing it.*

# The Mott Station

# KFWO

The Sunshine Station  
on the Sunshine Island  
of Catalina

*"Off the Coast of Southern California"*



JACK DUCKWORTH, JR.  
*Business Manager*

*And the Only Station on the Pa-  
cific Coast that is Licensed to  
Broadcast on Two Frequencies:*

**1000 Kc (299.8 Meters) and 5650 Kc.  
(57.03 Meters)**

# Radio Doings

New York Office  
J. W. HASTIE  
155 East 42nd Street  
Vanderbilt 4661

CLOYD MARSHALL, JR.

Editor  
K. G. ORMISTON  
Technical Editor

H. C. CHARLES

Trade Mark Reg. U. S. Pat. Off.

Los Angeles Office  
HORWOOD PUB. CO.  
407 East Pico Street  
Westmore 1401

Special Representatives  
J. S. MILLER H. G. DAVIS  
Copyright, 1928, by Horwood Publishing Co.

San Francisco Office  
CONGER & MOODY  
927 Hearst Building  
Kearney 8483

GEORGE W. MARSHALL  
Business Manager  
MAJ. LAWRENCE MOTT.  
Associate Editor

PAUL V. PARKER

## INDEX

	PAGE		PAGE
Radio Topics of the Day.....	5	DX Club .....	25
Broadcast Changes .....	9	Frequency Channel List.....	26
Questions and Answers.....	14	Studio News .....	28
Trade News .....	15	Daily Time Tables .....	33-39
The Studio .....	21	Detailed Programs .....	42-76
American Radio All-Electric Set.....	22	Timely Trade Topics.....	75

## INDEX OF DETAILED PROGRAMS

KEJK, Beverly Hills.....	58	KGO, Oakland .....	66
KELW, Burbank .....	61	KGW, Portland .....	70
KEX, Portland .....	71	KHJ, Los Angeles.....	46
KFI, Los Angeles.....	44	KHQ, Spokane .....	73
KFOA, Seattle .....	72	KJR, Seattle .....	71
KFON, Long Beach.....	64	KMIC, Inglewood .....	62
KFOZ, Los Angeles.....	60	KMTR, Los Angeles.....	50
KFRC, San Francisco.....	68	KNRC, Santa Monica.....	54
KFSD, San Diego.....	61	KNX, Hollywood .....	48
KFSG, Los Angeles.....	59	KOA, Denver .....	76
KFWB, Hollywood.....	52	KPLA, Los Angeles.....	56
KFWO, Catalina Isle.....	56	KPO, San Francisco.....	65
KGA, Spokane .....	73	KTBI, Los Angeles.....	59
KGEF, Los Angeles.....	60	KYA, San Francisco.....	66
KGFJ, Los Angeles.....	58	National Broadcasting Co.....	42

## INDEX TO ADVERTISERS

Advance Electric .....	31	Lawton, C. C. ....	8
Aerophonic .....	54	Listenwalter & Gough, Inc.....	55
Allan Radio Lab. ....	64	Lansing Manufacturing Co.....	51
American Radio Company.....	32	Meyberg, L. J., Co.....	20
Baker & Fitzgerald.....	57	National Radio Supply .....	16
Baker & Fitzgerald.....	10-11	Pacent Electric Co.....	53
Birch-Smith .....	43	Paul, S. J. ....	48
Brown, N. E. ....	63	Powell Manufacturing Co.....	59
California Transformer Co.....	75	Radio Manufacturers Supply.....	67
Crosley Dealers .....	3	Radio Supply .....	6-7
CeCo Manufacturing Company.....	23	Radio Service Shop.....	9
Giffillan Bros. ....	45	Rendler, J. C. ....	29
Gosilco .....	76	Radio Constructors .....	69
Henger-Seltzer Co. ....	4	Splittdorf Bethlehem mCo.....	18-19
Horn, H. H. ....	79	Standard Radio .....	60
Hammarlund-Roberts .....	23	Steinite Dealers .....	17
Jensen Radio Mfg. Co.....	12-13	Sunset Mfg. Co. ....	30
Kruger, B. Co. ....	68	Thomas, Ray .....	49
Kierulff & Ravenscroft.....	2	Tohey, A. J. ....	24
Klearstone Distributing Co.....	63	Trojan Radio Corp.....	47
Laboratory of Radio Standards.....	72	Ungar & Watson.....	30
Laboratory of Radio Standards.....	65	Yale Radio Electric Co.....	40-41
		Yale Radio Electric Co.....	80

## THE PACIFIC COAST'S GREAT RADIO WEEKLY DELIVERED TO YOUR HOME 52 WEEKS FOR ONLY \$3.00

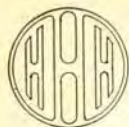
RADIO DOINGS, 407 East Pico St.,  
Los Angeles, California.

Enclosed is \$3.00. Please mail RADIO DOINGS each week for one year to my address.

Name.....

Address.....





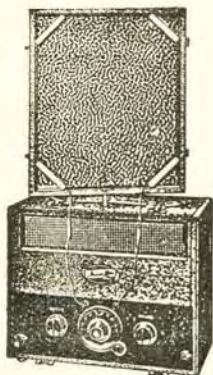
# The Trav-Ler



PORTABLE "5"

**\$60**

without  
Accessories



**\$77.25**

Complete

**Dealers: See Us for Special Dating for Your Spring and Summer Portable Business**

The Trav-ler is finished in attractive black leatherette—10 in. x 12 in.—weight, 24 pounds. Single dial control! Five tubes! Spring base sockets! Built-in loud speaker! Two stages of radio frequency! One detector! A stage of radio amplification! Phone jack and loop aerial are some of the many features of the Trav-ler Portable.

**A Remarkable Portable at a Low Price**

**WE GUARANTEE AND INSURE YOUR SATISFACTION**

Distributed by

**HERBERT H. HORN**

1629 So. Hill St.

Los Angeles

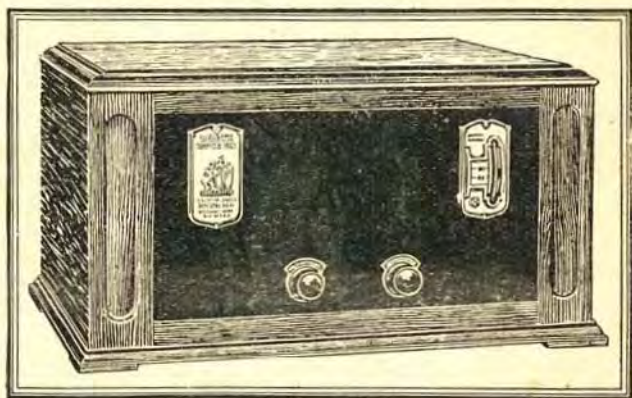
WEStmore 1713-1543





# BOSCH RADIO

OUTSTANDING VALUE  
SUPERLATIVE PERFORMANCE



Model 126

Six Tube, Self-contained, Complete AC Operation;  
Single Station Selector, Illuminated, Marvelous  
Tone and Volume, Using the New

**CUNNINGHAM TUBES**

**Priced at \$119**

(Less Tubes and Speaker)

Many Other Models to Choose From, All AC  
Operated, Ready to Plug in to Your  
Nearest Light Socket.

Model 116 \$160      Model 136 Consolette \$195  
Model 146 Consolette \$139      Model 96 Console \$295  
Model 107 Console \$440

*See Your Neighborhood Bosch Dealer*

## Yale Radio Electric Co.

*Exclusive Wholesale Distributors*

1111 Wall Street

LOS ANGELES

WEStmore 3351

**This file including all text and images are from scans of a private personal collection and have been scanned for archival and research purposes. This file may be freely distributed, but not sold on ebay or on any commercial sites, catalogs, booths or kiosks, either as reprints or by electronic methods. This file may be downloaded without charge from the Radio Researchers Group website at <http://www.otrr.org/>**

**Please help in the preservation of old time radio by supporting legitimate organizations who strive to preserve and restore the programs and related information.**