

RADIO DOINGS

RED BOOK OF RADIO

10¢
WEEKLY

*The Radio Authority
of the
Pacific Coast*



Billy Barron, KPLA

Vol. XII
No. 15

APRIL
8-14, 1928

MAKES ANY RADIO BETTER

The low throbbing "Zum, Zum" of the bass viol, the shrill staccato of the flute—on a **PEERLESS REPRODUCER** each comes through with amazing naturalness and true musical quality. Ask your dealer for a demonstration.

Peerless Reproducer, Price \$35

KIERULFF & RAVENSCROFT
RADIO EQUIPMENT



1630.32
S. Los Angeles St.
LOS ANGELES

121-131
Ninth Street
SAN FRANCISCO

Peerless
REPRODUCER

The following are a few of the Dealers who will prove to you the Superior Qualities of Peerless Reproducers:

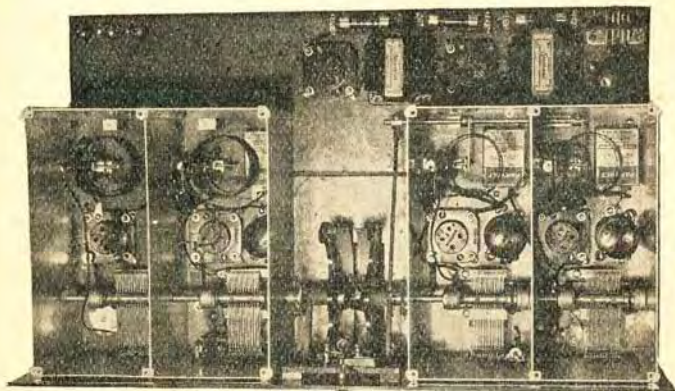
- | | | |
|---|--|---|
| <i>Los Angeles</i>
L. A. DUNCAN
2891 W. Pico
EMpire 1141 | ROBINSON RADIO SHOP
4528 S. Western Ave.
VERmont 6683 | JOHN J. SAWYER
543 E. Anaheim
Phone 636-235 |
| NORTON & NORTON
2211 N. Broadway
CApitol 0484 | <i>Pasadena</i>
PASADENA MOTOR SUPPLY
55 W. Colorado St.
Phone Colorado 1381 | <i>Glendale</i>
SHUCK MUSIC CO.
211 N. Brand Blvd.
Phone 2329 |
| H. D. HATFIELD & SON
1762 N. Vermont Ave.
OLympia 5220 | <i>Santa Monica</i>
RADIO SERVICE CO.
1456 Fourth St.
Santa Monica 24332 | <i>Van Nuys</i>
MARSDEN RADIO ELECTRIC
6255 Van Nuys Blvd.
Van Nuys 114-J |
| FRANKS RADIO
904 S. Broadway | <i>Inglewood</i>
INGLEWOOD ELEC.
110 S. Market
Phone 6 | <i>El Monte</i>
H. T. ALLEN
209 W. Main St.
Phone 306 |
| DE HOOG BROS.
6120 S. Broadway
THornwall 0224 | <i>Venice</i>
VENICE RADIO
1227 Washington Blvd.
Santa Monica 63544 | <i>Whittier</i>
WHITTIER RADIO DEN
216 Philadelphia St.
Phone 414-106 |
| PARMELEE-DOHRMANN CO.
741 S. Flower St.
TRinity 1331 | <i>Ocean Park</i>
PIER AVE. RADIO
142 Pier Ave.
Santa Monica 61322 | <i>San Bernardino</i>
THEW RADIO
4th, just West of E. St.
Phone 38112 |
| SULLIVAN'S, INC.
436 S. Broadway
MUtual 3206 | <i>San Pedro</i>
ZENITH RADIO SHOP
462 W. Sixth St.
1121 S. Meyler St.
519-1234-R | <i>Riverside</i>
F. E. SCHIRTZINGER
773 W. 7th St.
Phone 318 |
| FRANK GRAVES SASH, DOOR & MILL CO.
2012 Pasadena Ave.
CApitol 2073 | <i>Torrance</i>
DE BRA RADIO
Cravens & Post Ave.
Phone 73-J | <i>Santa Barbara</i>
LAMB AUTO ELECTRIC CO.
1200 Nnacapa St.
Phone 717 |
| MARTIN MUSIC CO.
734 S. Hill St.
TRinity 9621 | <i>Long Beach</i>
COBLER RADIO SHOP
216 Pine Ave.
Phone 62729 | |
| METRO RADIO SHOP
5016 W. Adams
ORegon 6603 | | |
| WOLFE RADIO
543 S. Western Ave.
WAshington 5711 | | |

Ask for a Demonstration

Peerless
REPRODUCER

Now!!!

Hi-Q Shielded Grid Six



The Result of Sound Engineering

The Famous Hi-Q Six employing Shielded Grid tubes in the first two stages of TRF with their tremendous amplification factor! Selectivity is maintained through adjustable antenna coupling and the use of a standard "A" tube in the third RF stage, with standard RF transformer coupling to the detector circuit.

Incorporates all the advantages of Shielded Grid tubes and none of the disadvantages. The utmost in sensitivity—and yet maintaining selectivity and the finest of tone quality.

—♦—
Factory Representatives

HENGER-SELTZER COMPANY

711 East 14th Street
LOS ANGELES

377 Brannan Street
SAN FRANCISCO

WEStmore 5258

Radio Doings

Trade Mark Reg. U. S. Pat. Off.

New York Office
J. W. HASTIE
155 East 42nd St.
Vanderbilt 4661

407 E. Pico St., Los Angeles, Calif.
Phone Westmore 1401

San Francisco Office
CONGER & MOODY
927 Hearst Bldg.
Kearney 8483

"The Red Book of Radio"

CLOYD MARSHALL, JR.
Editor

K. G. ORMISTON
Technical Editor

H. C. CHARLES

J. S. MILLER

H. G. DAVIS

GEORGE W. MARSHALL
Business Manager

MAJ. LAWRENCE MOTT
Associate Editor

PAUL V. PARKER

(Entered as second-class matter, Nov. 25, 1922, Los Angeles, Cal., Post Office, under Act of March 3, 1897.)
Copyright, 1928, by Horwood Publishing Co.
Issued Weekly. Ten Cents a Copy, Three Dollars a Year. Canada and Foreign Countries, \$3.50 per Year.

Vol. XII

Los Angeles

APRIL 7, 1928

San Francisco

No. 15

Radio Topics of the Day

"9XF"

The Great Lakes Broadcasting Company of Chicago has erected two 300-ft. radio towers three and one-half miles south of Downers Grove, Ill., where their new 50-KW transmitter is located.

The towers are 700 feet apart, and are painted alternate bands of black and white, the bands being 50 feet in width, beginning with white at the top. This for the protection of airmen who may be in that vicinity. A 300-watt lamp, enclosed in a red globe, is placed at 100 and 200 feet levels of each tower. A steel messenger cable will be stretched between the towers, but there will be no markings on this cable.

It is understood that one of the principal objects of this new station will be to broadcast performances of the Chicago Civic Opera Company. In tests the station is using the call 9XF.

ENTIRE BROADCASTING STRUCTURE MAY BE UPSET

No matter what policy is pursued by the Federal Radio Commission in compliance with the requirements of the new radio law, a gradual but complete upsetting of the present broadcasting structure is in view and with it the re-logging of all listeners' dials. The story of the first year of the radio control body's existence will be retold during its second, and probably last year of administrative life—and with no small amount of consequent annoyance to radio fans everywhere.

That the task now facing the Federal Radio Commission is an immense one, and more complicated than ever before, is conceded by virtually all expert observers here and by nearly everyone in the radio industry. The consensus of opinion seems to be that a radical reduction in the number of stations is the only solution.

Nothing can be accomplished of any great moment before April 1, when all present licenses expire. Hypothetical setups in compliance with the amendment requiring an equal division of stations, wave lengths, and powers in each of the five zones and a fair and equitable distribution to the states within the zones on the basis of population must first be worked out by the radio board with competent technical advice.

AUSTRALIA BROADCASTS KOOKABURRA

Not to be outdone by England broadcasting the song of a nightingale, Australia has just succeeded in sending far and wide the mirthful braying of "Jacko," a pet kookaburra, or laughing jackass, so famous in that part of the world.

"When 'Jacko' was brought to the radio studio for a rehearsal," according to advices from Melbourne, "his laughter could not be subdued. He laughed at everyone and everything, and, strange to say, he did not suffer in the slightest degree from microphone fright."

The RADIO SUPPLY CO.

"The Parts Warehouse of the West"

Is ready to fill your requirements for Parts. Our Stock is complete and adequate at all times

Watch This List of Parts for Changes

Alco Loops	Dudlo Mfg. Co. Wire	Polymet Condensers
Acme Apparatus	Dunham Loops	Preston DX Ground
Acme Wire	Eby Binding Posts	QRS Tubes
Advance Crystals	Ekko Ground Clamps	Racon Horns
Aero-Products	Elkon Chargers	Radiall Co. Amperites
Aerovox Wireless Products	Essenbee Ball Aerial	Rauland Lyric Transformers
Allen Mfg. Co. Parts	Formica Insulation Co.	Raytheon Tubes
All-American Products	Franco B Batteries	REL Apparatus
Amertran Products	Electrad Products	Remler Products
Amperites	Frost Products	Samson Transformers
Amsco Condensers	General Radio Parts	Sangamo Condensers
Artco Coils	Genwyn Coils	Scranton Hydrometers
Baldwin Units	Goodrich Rubber Panels	Selectone Transformers
Balkite Charges, Etc.	Gosilco Wire	Sensory Insulators
Banjamin Elec. Mfg. Co. Products	HFL Transformers	Silver Marshall Products
Bodine Loops & Coils	Hammarlund Products	Sovereign AC Tubes
Brandes Phones	Handy Chargers	Spaulding Bakelite
Branston Honeycomb Coils	Harkness Kits	Steinite Eliminators
Bremer-Tully Products	Hedgehog Transformers	Sterling Meters and Testers
Bretwood Leaks	H-K Sodderdip Lugs	Stevens Tools
Bruno Coils	Hoosick Parts	Thordarson Transformers
Camfield Coils	Infradyne Parts	Tobe Condensers
Carborundum Products	Jefferson Products	Tom Mack Products
Cardwell Condensers	Jones Cables	Tower Speakers
Carter Products	Karas Products	Trimm Cone Speakers
CeCo Tubes	Kelbrackets	Tyrman Parts
Celeron Panels	Kellogg Parts	Universal Battery Clips
C R L Var High Resistance	Kodol Products	Utah Units
Chicago Kester Solder	Kurz-Kasch Dials and Knobs	Vesta Power Units
Clarostat	Kuprox Chargers	Victoreen Parts
Corning Pyrex	Lynch Leaks	Ward Leonard Products
Crescent Transformers	Madison Moore Units	Wesholly Ground and Aerial
Daven Radio Parts	Magnaformer Units	Weston Products
DeJur Rheostats	Marco Products	Webco Power Units
DeLuxe Products	Mignon S. L. F. Cord	Willard Batteries
Dictogrand Speakers	Mueller Universal Clips	X. L. Variodensers
Dubilier Condenser Corp.	Mountford Resistance	Yaxley Products
	Naald Parts	
	National Soldering Irons	
	National Co. Parts	

DEALERS: Park Next Door at Our Expense

RADIO SUPPLY CO.

WHOLESALE

912-914 S. Broadway

VA. 6063

Los Angeles

New 1928 Catalogue Now Ready—Send for It

Largest Radio Parts Jobber West of Chicago

TAKEN "ALL AROUND"

We Have a Good Stock of Radio Parts



For You to Look Over

RADIO SUPPLY CO.

WHOLESALE

912-914 S. Broadway

VA. 6063

Los Angeles

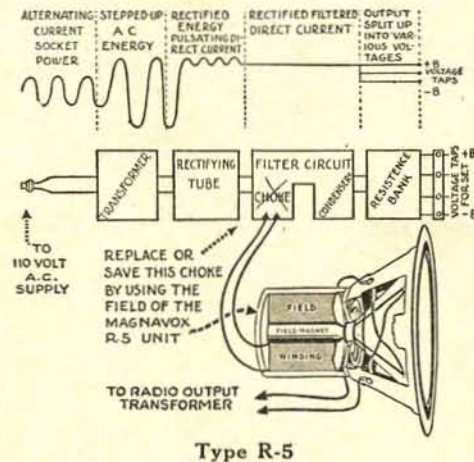
NEW 1928 CATALOGUE NOW READY—MAILED ON REQUEST

Largest Radio Parts Jobber West of Chicago

MAGNAVOX

DYNAMIC

SPEAKER UNITS



Type R-5

Type R-5

110 Volts D.C., to be built in Power Amplifier.

Type R-4

Operating from the A battery of your set or from 6 volt Trickle Charger.

Type R-500 Unit

A.C. operated in self-contained 210 Power Amplifier.

Mr. Dealer: Build up a satisfied clientele by selling
Magnavox—"They Satisfy"

Immediate Deliveries

Wholesale Distributors

C. C. LAWTON CO.

1125 Wall St.

WEStmore 3960

Los Angeles

New speakers for modern sets and improved broadcasting



Lo Boy Model

\$165



BEVERLY MODEL

\$65.00



ARISTOCRAT MODEL

\$85.00

MAGNAVOX

Power Cone Speaker

MADE under Magnavox electro-dynamic principle—the only perfect principle for reproducing the finest of modern broadcasting. Combines rectifier and power amplifier in rich mahogany cabinet—the most advanced type of reproducer made.

MAGNAVOX

Dynamic Cone Speaker

The BEVERLY model is also made under the electro-dynamic principle but is operated by direct current from the A battery of any radio set. Entirely different from similarly priced speakers. Handsome mahogany cabinet with curved sides.

MAGNAVOX

Dynamic Power Speaker

New A. C. Model 80

THE ARISTOCRAT works direct from light socket; enclosed in beautiful burl walnut cabinet.

Wholesale Distributors

C. C. LAWTON CO.

1125 Wall St.

WEStmore 3960

Los Angeles



THE Jensen Dynamic Speaker responds with the same beautiful fidelity to the average radio set using a 171 tube as to the full undistorted output of 210 push-pull amplifiers. Finished in handsome burl walnut. Height 14", Width 16", Depth 12".

Type D 44 (6 volt operation).....\$65.00

Type D 45 (90 volt operation)..... 67.50

Type D 44 A. C. (110 volt operation)..... 75.00

Unit alone—for Radio or Phonograph installation
\$47.50 to \$57.50

J E N
D Y N A M I C

.. The Finest

No. 4 of a series of advertisements explaining the differences between magnetic and dynamic types of speakers.

No matter how good

you believe your present speaker is—you will realize the superiority of the new (dynamic) speaker as soon as you hear it.

When you first listen to a Jensen Dynamic Cone Speaker, you will be impressed by the complete lack of distortion in both the high and low notes. From 20 to 5500 cycles—and especially at the extremes—the difference is instantly apparent.

At last you can own a speaker that is mirror-like in its tone fidelity—that is absolutely lacking in any tone of its own.

JENSEN RADIO MFG. CO.

212 Ninth Street

Oakland, Calif.

Distributed in Southern California by

YALE RADIO ELECTRIC CO.

1111 Wall Street

LOS ANGELES

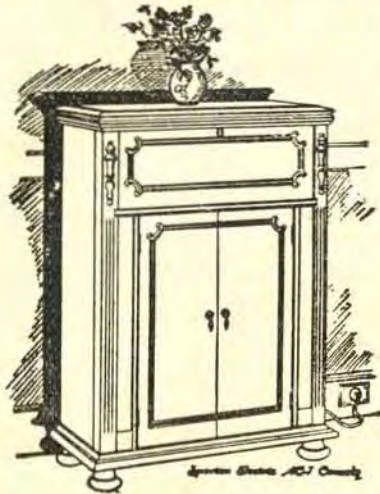
WEStmore 3351

S E N
S P E A K E R

in Radio ..

SPARTON RADIO

"The Pathfinder of the Air"



*The Brilliance of
Sparton's*

**"RICHEST OF
RADIO VOICES"**

Its depth and purity of tone have caused the Sparton Voice to be acclaimed an outstanding contribution to musical art.

**LIKE A RARE OLD VIOLIN — RICH, VIBRANT,
SOUL-STIRRING**

You cannot appreciate what Radio Science has achieved until you hear what the Pioneers of Light Socket Radio have done in the

SPARTON ALL-ELECTRIC RADIO

Uses No Batteries of Any Kind

Priced from \$72.00 to \$395.00

PACIFIC WHOLESALE INC.
WALTER M. FAGAN
PRESIDENT

433 E. 12th St.
Cor. Wall

Westmore 4358
Los Angeles



SPARTON RADIO

"The Pathfinder of the Air"

Here are just a few of the many Franchised Dealers who will gladly demonstrate for you:

LOS ANGELES

Alvarado Arcade Radio
Studio
743 1/4 S. Alvarado
DRexel 6859

American Electric Co.

25th and Vermont
BEacon 0676
1455 Crown Hill
VAndike 1533
8136 S. Vermont
YORk 8246
2952 W. Pico
EMpire 4517

H. H. Walker

1323 Venice Blvd.
BEacon 1311

Robinson Radio Shop

4528 S. Western Av.
VERmont 6683

C. & G. Electric and Radio Co.

1501 W. Santa Bar.
VERmont 5205

H. D. Hatfield

1762 N. Vermont Av.
OLympia 5220

ILSHIRE

Wilshire Music Co.
605 S. Western Ave.
Washington 8873

HOLLYWOOD

Rich Music Store
7520 Sunset Blvd.
GRanite 7801

PASADENA

F. C. Nash & Co.
Colorado, Broadway
and Union Sts.
Colorado 5311

WHITTIER

Farmers Hardware Co.
109 N. Greenleaf Av.
Phone 426-38

LONG BEACH

Jensen Radio Co.
107 American Ave.
Phone 667-30

McCrery Music Shoppe

228 Pine Ave.
Phone 640-14

SAN PEDRO

Pacific Radio Store
1102 S. Pacific
Phone 429-W

WILMINGTON

Wilmington Radio Store
119 W. Anaheim
Phone 455

SANTA MONICA

F. J. Bobsene
421 Santa Monica
Blvd.
Phone 25532

REDONDO BEACH

A. H. Costley
200 S. Pacific
Phone 2473

BALDWIN PARK

W. E. Walters
Phone Covina 674-23

ONTARIO and UPLAND

R. J. Tobey
243 N. Euclid
Ontario—Ph. 829
229 Second Ave.
Upland—Ph. 33

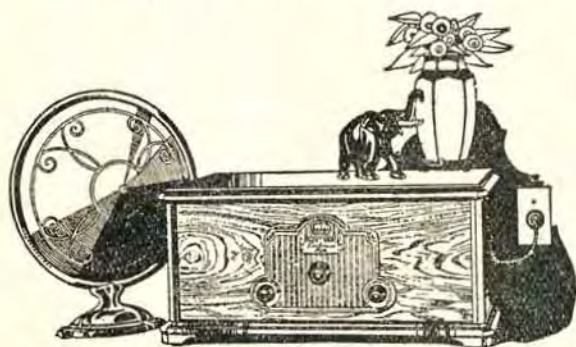
SAN DIEGO

Reynolds Radio Shop
3636 University Ave.
Hillcrest 7363-J



FREED -

Complete A. C.
Light Socket Operated



KNOW THIS!

1. That the new Electric Radio not only does away with all batteries, chargers, liquids, acids—
2. But is actually CHEAPER than an equivalent battery set with its batteries and chargers.
3. That it costs less than 1c for three hours' use.

ANAHEIM
Schmidt-Madlener Co.
175 W. Center St.

BALDWIN PARK
Zugs Super Service
238 W. El Monte Blvd.

BELVEDERE, L. A.
Johnson Brothers
756 Atlantic

CAMARILLO
H. S. Perry

COLTON
Hub Hardware Co.
158 "I" St.

COMPTON
Nygaard Electric
229 S. Main St.

CORONA
Graham Brothers
7th and Romand

CULVER CITY
Culver City Radio
6716 Washington Blvd.

ELSINORE
Graham Brothers

ENCINITAS
Ben E. Caylor & J. W. Rupe

FILLMORE
Ben C. Klotz
331 Central Ave.

HOLLYWOOD
Hollywood Electric Shop
6656 Hollywood Blvd.

LONG BEACH
Electricque Radio Co.
1719 E. Anaheim

Rialto Radio
430 American Ave.
Williams Piano Co.
740 Pine St.

LOS ANGELES
Andrews, J. M. Co.
1818 S. Grand Ave.
Anderson Radio Co.
9114 1/2 S. Vermont
Alladin Radio
4550 W. Adams
Atwater Radio
3208 Glendale Blvd.
Bayer, Frank
5155 W. Adams St.
Clydes Service
5347 Wilshire
Famous Army & Navy
Dept. Store
530 S. Main St.

Gold Furniture Co.
1817 Central

Henderson's Radio Store
3808 Whittier Blvd.
Hollywood Radio Co.
709 N. Western
Home Radio Co.
7605 S. Vermont
Lyon, Ray
1611 E. Florence
Melrose Radio Shop
5663 Melrose St.
Nilsson & Nelson
4302 S. Avalon Blvd.
Radio Service Shop
4508 Hollywood Blvd.
Radio Super Service
2044 Venice Blvd.
Richardson's, Inc.
730 W. 7th St.
Robinson Radio Shop
4528 S. Western Ave.
Schereson Bros.
349 N. Main St.
Tivoli Radio Shop
4204 S. Central
West States Electric
8631 S. Vermont
Worobieff Music Shop
2038 E. First St.

EISEMANN

The Radio of America's
Finest Homes

When you own a Freed-Eisemann you are in distinguished company. For the world's greatest ship, the Leviathan, specified Freed-Eisemann, they Mayor of London chose the same, as well as hundreds of eminent Americans. These people want the best and they have it in Freed-Eisemann.

A. J. Tobey Co.
RADIO ACCESSORY JOBBER

1145 Wall Street

Phone WE. 8772

Distributors for Southern California

MONTEREY PARK
Monterey Park Music Co.
102 E. Garvey

MOORPARK
Tanner, I. G.
Mission Garage

ONTARIO
Ford Brothers
313 N. Euclid Ave.

ORANGE
Cassart Radio Shop
100 W. Chapman Ave.

PASADENA
Cole, F. B.
778 E. Colorado
Louis Radio Shop
2306 E. Villa St.
Radio Doc
1581 E. Walnut St.
Webster's Elect. Gar.
100 E. Union

PIRU
Stewart Garage

POMONA
Swartz & Heimerl
Williams, W. L.
497 W. 2nd

REDLANDS
Sleiger, Dale
Thorp, J. H., Music Shop
124 S. Pacific Ave.

RIVERSIDE
B. K. Machine Shop
240 W. Sixth St.

SAN BERNARDINO
Radio Laboratories
873 7th St.
Stokes & Sebastian
292 Baseline

SAN DIEGO
Maryland Auto Supply Co.
650 "F" St.

SAN PEDRO
Johnson Radio Co.
908 S. Gaffey St.
Rialto Radio
817 Pacific Ave.

SAN MARINO
San Marino Electric

SANTA ANA
Hawley's Sporting Goods
305 N. Sycamore

SANTA BARBARA
Radio Sales & Serv. Shop
924 Chapala St.

SOUTH PASADENA
Jones & Cross
1020 Mission St.

TAFT
Toon, Jack

TUJUNGA
Tujunga Radio Co.
437 S. Sunset

UPLAND
Creighton, Roy

VENICE
Coast Electric & Mac'y Co.
45 Market St.

VENTURA
Clopper Radio Elect.
939 Main St.

Walbert

ELECTRIC RADIO

\$276.50

Complete with Tubes



\$250.00

Less Tubes



Console Models

\$300 to \$450



AC ELECTRIC RADIO

BACKED BY TWO YEARS' EXPERIENCE

Here is an AC tube radio we can offer with confidence and heartily recommend.

It has been on the market two years. We have watched it and know it will outperform any radio set on the market.

And of course it's a real electric radio—not an electrified set. It is complete in itself. It contains no batteries, no charger, no accessories.

HEAR THE WALBERT YOURSELF
COME IN FOR A DEMONSTRATION



Southern California Distributors

HOWARD RADIO DISTRIBUTING CO.

1236 S. Maple Ave. Westmore 2543 Los Angeles, Calif.

407 East Pico St.
Los Angeles

C. W. SMITH CO.
Factory Representatives

Room 506
Westmore 9466



Through the courtesy of the C. E. Manufacturing Company of Providence, Rhode Island, Radio Doings offers as a prize for the best letter to the DX Club one of the famous *OeCo* type "H" Special detectors. This tube is especially suitable for DX work, as it is a highly sensitive "hard" detector without background noise. And remember, it is not always the big expensive set with the longest list of DX that wins the prize—everybody has a chance.

FIRST PRIZE

The DX Club:

Will try and pick out a few of the stations received on my six-tube home-made RF set, using general purpose tubes with a fifty-foot aerial, batteries from the 10c store.

My list of about 125 stations include all the big boys, such as WEAJ, WGY, WGN, KDKA, WJZ, WLW, WCCO, KOMO, KJR, and all the California stations.

Will now include some of the small ones, which are really the ones to be proud of, such as KFAU, KFCB, KFCR (50 watts), KFDM, KFEL, KFJF, KFEQ, KFJF (50 watts), KFPY, KFKU, KFQB, KFVG (50 watts), KFWF, KFXF, BGFH, KGRC (50 watts), KGRS, KLZ, KMMJ, KMOX, KOW, KMBC, KPRC, KRLD, KTHS, KTNT, KTSA, KVOO, KWKH, KWVG, KYW, WFAA, WDAG, WHB, WIBO, WJAD, WJBT, WKY, WNAD, WOR, WOS, WSMB, CLE and CZE, all received on good, clear, loud speaker volume, with no extra equipment.

My tubes are two years old, and intend to build a new set to get some real distance and need some new tubes.

G. H. DRURY,
1105 No. Catalina Ave.,
Tucson, Arizona.

DX CLUB:

As I am a new radio fan, having just purchased a Radiola 17, wish to submit the following list of stations logged within the past two weeks:

KSL, KFAB, KOA, KSEI, KVOO, KWKH, WCCO, WGN, KPO, WLW, KOMO, KGW, CKWX, KFBU, CFCN, WBAP, KOB, KSD and KFAD.

All of the above stations were ob-

tained with good audible reception over loud speaker, and all were logged before twelve (12) p. m., with the exception of KFBU. Am only submitting one station from each state from which I have logged, and there are several states that I get a number of stations from; with California leading by a large majority.

Hoping this will admit me to the DX Club, I am,

Very truly yours,

W. T. COOK,
Prescott, Arizona.

Box 566.

DX Club:

Maybe this letter belongs in the DX Club and maybe it's advertising—maybe both.

Last year about this time I installed a Preston Ground. I waited the week recommended to give it its full efficiency, then I waited some more, and still I could see no difference in it and the old ground.

Well, last week I began to find out things about the little old copper can in the ground.

On the aerial I never know there was any station between KGO and KWKH (the fighting Henderson). Well, I took the aerial off and put the ground on the aerial post. Got KGO fine; came up a notch, got WBBM; stepped up some more, got KWKH; another notch, KHJ; once more, WCCO, and still some further up, WGN and—Oh, boy! More volume than I knew what to do with on the loud speaker.

Now the little old copper can is worth at least a hundred.

Yours truly,
Carnation, Wash. W. H. CHENEY.

BT Counterphase 8—World's Greatest Radio—Sold with a Distance Guarantee. H. A. Everest, 1032 North Ogden Dr. Granite 9915.

? Questions and Answers ?

• A Weekly Department Conducted by K. G. Ormlston, I.R.E. •

Hundreds of our readers have been hearing a new high-powered station, and daily the mail and telephone bring a multitude of inquiries as to the whereabouts of station 9XF. This is the new plant of the Great Lakes Broadcasting Corporation, is located at Downers Grove, Illinois, about 30 miles from Chicago, and is of 50,000 watts power. They put out a tremendous signal, and come in on the West coast with all the wallop of a local station. In equipment the station is similar to 3XN at Whippany. It is nice to have these super-power stations springing up around the country because we are apt to have some DX throughout the summer. This signal of 9XF is pretty apt to ride in above the static level even in mid-summer. High power is great stuff, so long as we don't have any of it around here in our own backyard.

QUESTION—Why is it that an AC receiver, nicely balanced for highest efficiency at one location, will be all wet when taken to a different location and must be re-balanced?

J. S., Los Angeles.

ANSWER—Because of the fact that the characteristics of the alternating current lines vary greatly in different localities, and inasmuch as the AC lines come directly into the circuits of the receiver through a power transformer they have a very decided influence upon the balancing of the set. In one location the AC lines will be in conduit, and in another wiring will be in the open. In one case they will dive underground and in another they will run for miles on poles, etc.

They are naturally possessed of inductance and capacity, and in addition are carrying energy from local broadcast stations and a lot of other radio frequency currents. The manufacturers of AC sets apparently overlooked the necessity of isolating the receiver from the AC system through the use of a proper filter circuit. Every AC set should be so equipped, and then the ra-

dio circuits would, in effect, have no connection with the AC supply lines, because of the isolation effect of the filter. The set would then perform the same regardless of location and peculiarities of the AC circuit to which the set is connected.

QUESTION—How does the new L-50-power tube compare with the other types of power tubes, such as 112, 171, etc., from the quality standpoint?

H. E. M., Fresno, Calif.

ANSWER—The following figures give the undistorted power output of the four types of power tubes.

Tubes	Undistorted Output	Plate Voltage
112	195.....	157
171	700.....	180
210	1500.....	425
250 (L-50)	4600.....	450

It must be understood, however, that quality is not determined alone by the tube equipment, but that transformers and speakers also enter very largely into the result. An overloaded tube or saturated transformer core will cause distortion in spite of the elegance of the output stage, and a speaker which will not adequately handle the output of a tube such as the L-50, will also ruin the result. Therefore, from the output of the detector tube to the loud speaker, the design of the whole amplifier must be correct if the best quality is to be obtained. In our opinion the only type of speaker which can do justice to the new power tube are the dynamic types, Jensen and Magnavox.

QUESTION—What has been the most successful type of static eliminator, or are any such devices successful at all? I refer, of course, to natural static and not the man-made variety.

H. P. H., Portland, Ore.

ANSWER—There is no method which is entirely successful. That is, there have been developed many systems whereby the static may be greatly reduced and the signal-to-static ratio in-

(Continued on Page 74)

TONE QUALITY In Custom Built Radios With **SELECTIVITY**

Old Sets Electrified, Balanced. Magnaformer 9-8-Hi-"Q"
6, B. T. 6, Scott's Super and others built to order. DE.
7764, S. E. Cummins, 708 Mortimer, Huntington Park, Cal.

5

THINGS YOU SHOULD KNOW**before buying
an Electric Set**

- 1 Don't let any one sell you anything. Buy a well-known set, made by a manufacturer who will stand back of it. Why let any one experiment with your money?
- 2 Know your radio dealer. Is he capable—is he interested enough in the set to insure your getting every bit of satisfaction you paid for?
- 3 Make the acquaintance of the set. See it, hear it, play it. What do your friends know about the receiver you contemplate buying? Ask your local expert these questions.
- 4 Is the set selective—sensitive—easy to operate—strong mechanically—right electrically? Has it tone quality—true, faithful, clear, pleasing? Does it use AC tubes or is it "electrified"?
- 5 Above all—how long will it last? You don't expect a \$600 car to stand up like a \$6000 car. Quality costs money. Don't expect \$200 worth of radio from a \$50 investment.

If you consider these five questions, you will consider KOLSTER—and most people who consider KOLSTER buy KOLSTER. Hear it today.

KOLSTER RADIO

Exclusively distributed in California by

JOHN G. RAPP CORPORATION

123 SECOND STREET
SAN FRANCISCO

1135 WALL STREET
LOS ANGELES

ENJOY the Kolster Hour Every Tuesday from 9 to 10 p.m.

•Broadcast over K P O and K F I Simultaneously.



For SUMMER RECEPTION

The Preston Permanent Radio Ground is a surprisingly efficient UNDERGROUND ANTENNA.

To use it as an underground aerial you merely detach your regular antenna and then hook the lead-in wire from the Preston Ground to the antenna post of your receiver and operate the set without a connection to the ground post.

Try this . . . some day or evening when static spoils your radio reception. You'll hear something new in radio performance . . . programs that come in clear and loud . . . without a hint of static.

Eight dollars invested in a Preston Radio Ground is a good investment in Radio performance.

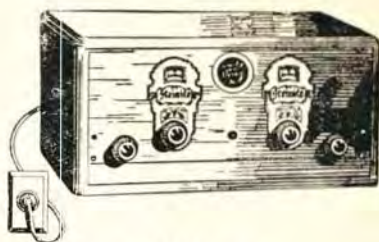
**UNGER & WATSON,
Inc.**

Manufacturers
1366 S. Figueroa St.
LOS ANGELES

THE SEROY COMPANY
Distributors: Northern California
Oregon, Washington
122 Broadway OAKLAND

Steinite Electric Radio

Time Tested
(Licensed under RCA)



\$93.50
(less tubes)

**No Batteries, Eliminators,
Acids, Water or
Attachments**

Why buy an untried electric set, when you can buy the time-tested STEINITE ELECTRIC at its amazingly low price? STEINITE Electrics have given millions of hours of satisfactory performance in 50,000 American homes — they were introduced as far back as the 1926 Radio Shows.

**COMES TO YOU IN ONE UNIT,
READY TO GO**

— ◆ —
DEALERS EVERYWHERE

— ◆ —
Distributors

National Radio & Supply Co.
141 W. Washington WE. 2748
Los Angeles

THE STUDIO

BELOW—The Packard Six Dance Orchestra, under the co-direction of Jack Altland and Wally Perrin, was organized three years ago. This popular orchestra is broadcasting every Sunday night, from 10:00 to 11:00. The personnel is: Bert Farquaharson, banjo and guitar; Merle Casey, drums and vocalist; Mort Kibbe, saxophone and clarinet; Wally Perrin, saxophone and clarinet; Jack Altland, pianist.



LEFT—Helen Davis, mezzo-soprano, started her career as a church soloist in New York. She was selected by Thomas Edison to make Edison records, and through this medium has won a host of admirers. For the past three seasons Miss Davis has been singing, with great success, through the United States and Canada, and is now appearing before the microphone at KMTR.



The Crosley Jewelbox

The Crosley Jewelbox receiver is the Bandbox with the complete power supply system built in, making a very compact and complete unit. It is a six-tube set, using the Neutrodyne circuit, and employs several novel features.

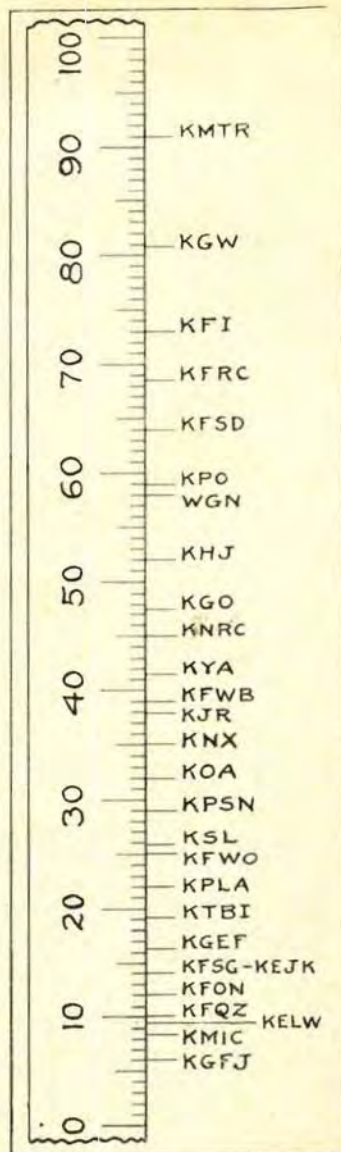
The input to the first RF tube is bridged by an RF choke, connected from antenna to ground, and this is in turn shunted by a variable resistance, which constitutes the volume control. Hence, the volume control knob regulates the voltage impressed upon the grid of the first tube. The three variable condensers tuning the second and third RF stages and the detector input are ganged together on one dial. Two little levers, called "accumulators," operate small vernier condensers, which are connected in shunt with the first and second variable condensers, and allow them to be exactly "peaked" with the third condenser. These accumulators permit of the top-notch efficiency of a three-dial set.

The set is thoroughly shielded, including coils, transformers, and condensers, thereby protecting it from external influences. The circuit is the Hazeltine neutrodyne, and the balancing of the RF stages affords high radio frequency amplification without approaching too close to the oscillation point.

The three stages of RF and the first audio frequency stage employ tubes of the 26-type, the detector is of the heater type -27, and the output is a 171-power tube. The power supply unit amply takes care of all A, B and C requirements of the receiver.

In operation the set is tuned by the knob operating the illuminated dial, volume is adjusted by the left-hand knob, and for fine tuning for DX, the two accumulator levers are adjusted for maximum volume and sharpness. The right-hand knob is the off and on switch.

An actual reproduction of the dial strip of a Jewelbox is given herewith with the logging of a number of stations. The quality of reproduction of the set is very good, and in all the Jewelbox is a lot of radio for the money.



Dial Strip of Crosley Jewelbox with actual logging of Coast stations.



Scientifically Engineered

CeCo is the scientifically engineered tube, the laboratory tested tube, the tube endorsed by radio authorities including Browning, Lynch, Cockaday, Harkness, Hurd, Best, Bernard, Henney, Milten, and others.

Select the types of CeCo tubes best suited for your receiver.

There's a Type for Every Need:

General Purpose Tubes

Special Purpose Tubes

Filament Type Rectifiers

Power Tubes

and A. C. TUBES

C. E. MFG. CO., INC., Providence, R. I., U. S. A.

Largest Exclusive Tube Manufacturers in the World

Factory Representatives:

B. KRUGER & CO.

500 Huntley Drive, West Hollywood

OXford 3897

Stops A.C. Noises



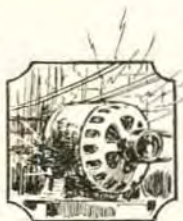
Also
Improves
Selectivity
and
Increases
Distance

Falck

CLAROCEPTOR

Don't let "man-made static" that originates in motors, streets cars, telephones and electrical appliances and which comes in over the lighting wires mar your programs with blare, squeal, fry and scratch.

Now you can have clearer AC reception. Plug in a Falck Claroceptor between wall socket and set. The Claroceptor grounds and thus blocks out of the set line interference noises and radio frequency disturbances. Selectivity and distance also are improved. No changes in set. Measures only $3\frac{1}{2} \times 5\frac{1}{2} \times 2\frac{1}{2}$ inches. Tested, proved. Users enthusiastic. A product of pioneer radio equipment manufacturers; \$7.50 complete with cord and plug. At radio parts dealers.



**Advance
Electric Co.**
1260 W. 2nd St.
Los Angeles, Calif.
Jobbers & Dealers:
write for proposition.

RESISTANCE

To overcome it, to reduce it, has been a problem for years.

Do you know that the water conduit and gas pipes in your home are made of iron and that iron in any electrical circuit is resistance?

Knowing this, why not enjoy your radio set to its fullest extent by giving it a positive ground connection which will eliminate the resistance that causes noises generally attributed to "static"; a ground which sharpens tuning, improves tone, and provides more volume on both local and distant stations.



THE
**Wesholly
Positive
Radio
Ground**

Is sold on an absolute guarantee.

See your Dealer
Today

Sunset Mfg. Co.
7471 Melrose Ave.
Los Angeles
HEmpstead 4941

\$2.25

"The Home of Better Reception"

“Meet the Folks, Brownie!”

By K. G. O.

We happened to be way out Western Avenue the other evening and dropped in on our friend, N. E. Brown. Somehow we were strongly reminded of that



N. E. BROWN

crack about the world beating a path to the door of the chap who builds a better fly trap than his fellows, even though he lives in the woods. Also the one about the light under the bushel basket . . . so we decided to remove the basket and give our readers a peek into the very interesting establishment maintained by an unusually brainy individual who we find tearing his hair over a slide-rule and a mass of figures, charts and drawings.

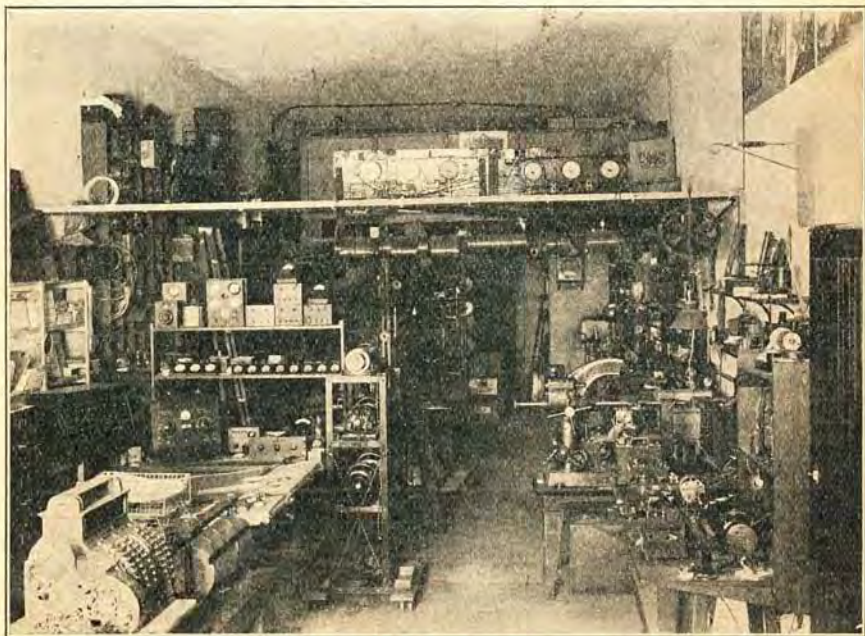
“It won't work,” says he.
 “How do you know,” says we. “Have you tried it?”
 “Nope,” he replies. “If it won't work on paper or in the old head, it won't work when made of steel and copper and bakelite!”

And there you have a picture of N. E. Brown. The type of engineer who must see through the mind's eye every perfected detail before he lays hand to a tool to construct the blamed thing.

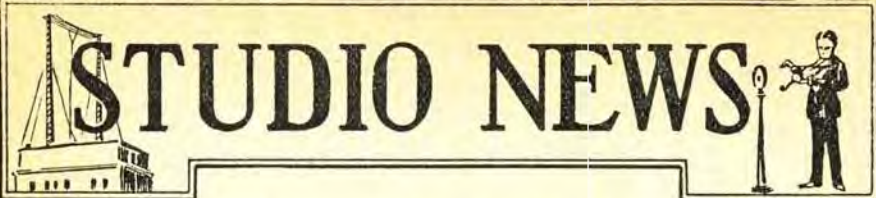
* * *

“Brownie” specializes in research and patent development work in mechanical and electrical lines, as well as the construction of special equipment and devices. He has recently designed and built a Sperry gyroscope for artificial horizon determination with a speed of 18,000 revolutions per minute, a number of short wave transmitters and receivers, household refrigerating machines, etc.

We poked around his laboratory and noticed universal milling machines, uni-
 (Continued on Page 74)



Technical Laboratory of N. E. Brown



STUDIO NEWS

Rudy Seiger and his Fairmont Hotel concert orchestra will be a weekly feature every Sunday evening from 8:30 to 9:00 over KPO. This will be an all request number program.

Charles Beauchamp, the popular radio tenor, is being featured daily at 10:30 from KMIC.

KOIN, Portland, Oregon, is broadcasting, every night except Sunday, a program from 7:15 to 8 by the Benson Orchestra, under the direction of Misha Pelz. Each evening they feature a different artist or artists.

KFQZ has recently inaugurated a breakfast program from 7 to 10 every day except Sunday. The program has been named Bull Dog and Bull Frog and the idea is to drive away the early morning blues with snappy music. Another daily feature is the KFQZ orchestra which entertains from 3 to 5 p. m.

The Home Savings Building Trio of KJR is a popular night feature from 9 to 10 p. m. The Trio is under the direction of Kola Levienne and has as one of its members, Mr. J. Webster Hoover, Mezzo-soprano, director of programs for KJR.

The General Electric program, composed of a twelve piece orchestra, will be a new feature to be broadcast over KGO Monday evening April 9, at 6:35 o'clock.

Monday evening at 7:15, Pacific standard time, KOA will present the famous oratorio "The Holy City." The chorus will be directed by Freeman H. Talbot.

Rae Silverman, the popular Blues Singer, is being featured at KFQZ on a program of popular music every Tuesday and Friday from 8 to 9 p. m.

KOA's mixed quartet will feature Negro spirituals on their program Wednesday, April 11, at 7:15 o'clock, pacific standard time.

Eva Olivotti, prima donna of many New York Light Operatic Productions, and recently a member of the Los Angeles Civic Light Opera Association, so successfully presented at the Shrine Auditorium, has been signed by Leslie Adams, program director at KMTR, to appear exclusively twice weekly over that station.

Mr. Naylor Rogers, the well known manager of KNX, has just left for a trip through the East to complete arrangements for the new 5000 watt transmitter which will be installed early this fall. Mr. Rogers hopes that Television has been perfected to such a degree that they can make practical use of it and have this as part of their new equipment.

Those who wish to listen to a real old fashioned barn dance should tune in on KOIL, Council Bluffs, Tuesday evening at 7 o'clock. This program will consist entirely of old time dance music.

KTBI, the Bible Institute, will give a special Easter service from 7 to 8 a. m., on Sunday, April 8th. Albert E. Kelly will be the speaker.

Cris Schoenberg, the well-known composer of popular music, will broadcast from KNRC April 9th from 8 to 9.

Allan Fairchild is now one of the announcers at KFL. He was previously with KNRC and KFQZ.

After an absence of several months, Tambo and Bones reappear over KGO Thursday night, April 12, at 8:00 o'clock. They will continue their line of chatter with the Rickety Tackety Radio Minstrels.

On April 9th between 7 and 7:30, KNX will broadcast a special organ recital from the Carthay Circle Theatre. This will be a regular feature on Monday and Saturday evenings starting at 7 o'clock.

SIMPLICITY and QUALITY

Are two **FEATURES** that everybody demands of a good Radio set. Our new **AMERICAN ALL ELECTRIC** set is bound to be your ideal set, if you appreciate the best in **TONAL QUALITIES**. A new and improved method in **AIR COLUMN SPEAKERS** gives our set a tone that rivals the tone of sets selling for two and three times as much. As for **SIMPLICITY**, this new and wonderful set has only one station selector with a small knob that controls the volume as you may desire; just snap the small switch at the side to bring forth the best entertainment that is possible from our wonderful broadcast stations, and when you are through another snap of the switch and the set is automatically shut off. And don't forget that you do not have to worry about your batteries running down or that your crystal needs adjustment—because this set has none, and is **ALL ELECTRIC** and does not require any attention whatsoever.

Another feature of this set is **SELECTIVITY**, which means that you listen to one station at a time without interference of another station.

**COME!
SEE!
HEAR!**

this wonderful set, and don't forget its **ALL ELECTRIC**



TABLE MODEL \$85

Two beautiful

Console Models
priced slightly higher.

May we demonstrate to you?

Dealers are invited to write for a franchise

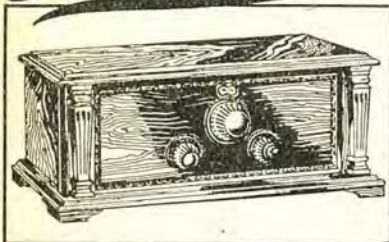
*Don't Think of Radio Until You Have Seen and Heard
Our New Set*

AMERICAN RADIO CO.

108 East Eighth Street
Tucker 6028

Los Angeles, Calif.
Open Evenings Until 8

The Greater Silver-tone



A. C. Electric 6-Tube Radio \$124⁷⁵_{Cash Price}

Here again are the advanced features of radio reception. The slightest touch of the one-dial selector knob will bring to you greater things, well done.

Operates Direct from
Your House
Current

No wet or dry batteries to bother with. Only from the World's Largest Store can you buy such a powerful six-tube, single control radio at so low a price. Its beauty, simplicity and efficiency give it preference.

Exclusively at

Sears, Roebuck and Co.

TWO RETAIL DEPARTMENT STORES

Vermont and | Ninth St. and
Slauson Aves. | Boyle Ave.
YORk 1151 | Angelus 6771

Los Angeles

Bouldin Tells of New Majestic Radio

The first authentic information concerning the new Majestic Radio now being built by Grigsby-Grunow Co., well-known manufacturers of Majestic A and B Power Units, has just been brought to Los Angeles by C. F. Bouldin, maker of the Bouldin Cage Antenna, who just returned from Chicago.

"I'm certainly glad I had an opportunity to visit the Majestic Factories in Chicago," said Bouldin. "Having heard so much about the performance of the Majestic radio, I wanted to see for myself whether or not the reports were exaggerated. To tell the story in a few words, I believe that the Majestic people have a radio that will be the world's best seller, just as soon as stocks can reach the dealers. The set is a seven-tube, all electric console, with a built-in dynamic type speaker. The power amplifier for the speaker is built into the set, and while I have heard many wonderful radio sets, I honestly believe that the Majestic is much better than anything I have yet seen. I heard

(Continued on Page 74)

With the New SHIELD-GRID TUBES



Fits any
UX Socket
Price
\$7.50 Each

Use
BRAXTON-KING
Plug-in Shielded R. F.
Impedance Units

Packed in sets of three, laboratory matched at 350 KC. Braxton-King Impedances and Shield-Grid tubes produce, in the new B-K Shielded Grid Seven, a remarkable combination of tremendous volume with undistorted tone.

Write for catalog sheets,
circuit diagrams
and Prices

OTHER B-K PRODUCTS

King Coils for 1-dial Browning Drake list.	\$6.00
Braxton-King Plug-in Intermediate Tr.	4.50
Braxton-King Plug-in Oscillator Coll.	2.00
Braxton-King Shielded R. F. Coll.	2.50

Mississippi Valley Radio Co.
914 Pine Street, St. Louis, Mo.

Pacific Coast Representative
B. KRUGER & CO.

500 Huntley Drive, West Hollywood OXFord 3897

Wholesale Distributors
Yale Radio Electric Co. Howard Radio Distrib-
Herbert H. Horn uting Co.
Radio Supply Co.

Kolster Hour at KFI

"Probably the most interesting and unique radio programs on the air," is the way public opinion has characterized the programs presented over KFI and KPO every Tuesday at 9 p. m., by the John G. Rapp Corp., exclusive California distributor of Kolster Radios, originating alternately with KFI and KPO.

The KFI programs feature the talented Virginia Flohri, one of the brightest stars in the radio firmament. Miss Flohri has wrought a national reputation for herself in broadcasting and has an enviable record on the concert, operatic and Philharmonic stages. Her flawless tone production prevents any of that wabbling and tremolo during broadcasting that has brought the average soprano into disfavor. With Miss Flohri appears James Burroughs, whose tenor voice has pleased from KFI and on the comic opera stage for many years, and the eminent baritone, Z. Earl Meeker.

The Kolster Concert Orchestra, under the direction of Pryor Moore, has added new luster to the high standard to which such music has been brought on the Pacific Coast.

M. G. Seuse, Southern California district manager for John G. Rapp Corp., states, after an exhaustive survey, that the Kolster programs are being built scientifically to fit public taste. Popular and classic, vocal and instrumental, solo and duet selections being used according to audience demands. The program follows:

- (1) Popular melodies of Victor Herbert
Musical Comedies.....
KOLSTER ORCHESTRA
- (2) Bell Song, from "Lakme".....*Delibes*
FLOHRI AND KOLSTER ORCHESTRA
- (3) Ah, Moon of My Delight, from "Persian Garden".....*Lehman*
JAMES BURROUGHS
- (4) Duet from "Persian Garden".....*Lehman*
FLOHRI AND BURROUGHS
- (5) Suite, "The Willow Plate".....
.....*Victor* Herbert
KOLSTER ORCHESTRA
- (6) Tommie Lad.....*McNaught*
MEEKER AND KOLSTER ORCHESTRA
- (7) Duet, "La Forza del Destino".....*Verdi*
BURROUGHS AND MEEKER
- (8) Waltz, "Wedding Dance".....*Linke*
KOLSTER ORCHESTRA
- (9) The Nightingale.....*Saint-Saens*
The "Frasquita".....*Lehar*
FLOHRI AND KOLSTER ORCHESTRA
- (10) Two popular songs—
The World Is Waiting for the Sunrise
Together.....
BURROUGHS AND KOLSTER ORCHESTRA
- (11) Hungarian Rhapsody.....*Liszt*
KOLSTER ORCHESTRA



ASSOCIATE
MANUFACTURERS
ACME Wire Co.
BENJAMIN Elec. Mfg. Co.
CARTER Radio Co.
H. H. EBY Mfg. Co.
HAMMARLUND Mfg. Co.
INTERNATIONAL Resistance Co.
RADIALL Company
SAMSON Elec. Co.
SANGAMO Elec. Co.
YANLEY Mfg. Co.
Westinghouse MICARTA

It Must Be CUSTOM-BUILT!

The new improved Hammarlund-Roberts Hi-Q SIX Receiver has been designed by ten of America's foremost radio engineers entirely with an eye to finest possible reception.

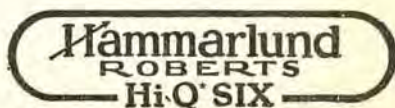
Every modern constructional feature is included—perfect synchronization is assured—deluxe performance is finally achieved!

This wonderful instrument cannot be purchased ready-made. It must be CUSTOM-BUILT by yourself at home. Complete parts cost only \$95.80. Instruction book shows you how to build. Drilled foundation panels make construction a pleasure rather than a job. The finished instrument is accepted as the best in radio regardless of price. Ask your dealer for the "How to Build" Book or write direct. Price 25 cents.

HENGER-SELTZER CO.
California Representative

Los Angeles

San Francisco



Hammarlund-Roberts, Inc.

1182 Broadway, Dept. P

New York City

THOUSANDS

Will Tell You

Majestic



**Dry "A"
and "B"
Units**

**ELECTRIFY
ANY RADIO SET**

AND GIVE

**BETTER RADIO
RECEPTION
THAN ANY OTHER FORM OF
ELECTRICAL RADIO POWER**

See your nearest dealer today — any good radio store. Try Majestics on your set and note the difference.

You plug Majestics in and forget them

Grigsby-Grunow-Hinds Co.

4540 Armitage Ave., Chicago

W. J. SEROY, Pacific Coast Sales Manager,

122 Broadway -

Oakland, Calif.

Los Angeles Service Station, 733 Mitchell Place, off Figueroa St.



JENNINGS PIERCE
Chief Announcer

National Broadcasting Co., Inc.

PACIFIC COAST NETWORK

KFI KPO KGO
KGW KOMO
KFOA KHQ

Charles H. Gabriel, Jr.
Program Director

6:30 p. m.—Memory Lane brings "A Day at the Beach."

Broadcast over KHQ, KOMO and KGO.

8:00 p. m.—Eveready Salon Orchestra presents vivid, scintillating melodies from the Latin countries as a feature of their program. Max Dolin will direct. Broadcast over KHQ, KOMO, KFOA, KGW, KGO, KPO and KFI.

8:30 p. m.—Don Amaizo, Wizard of the Three B's (the bow, the bar and the baton), will play Wieniawski's "Romance" as a violin solo. The orchestra will assist. Broadcast over KHQ, KOMO, KFOA, KGW, KGO, KPO and KFI.

WEDNESDAY, APRIL 11

6:30 p. m.—Musical Fruit Cocktail program. Broadcast over KHQ, KOMO, KFOA, KGW, KGO, KPO and KFI.

8:00 p. m.—Jack and Ethyl, the "Motor Mates," contrary to their established custom, are going to tell their friends what they are doing and seeing on the trip through California, Oregon and Washington. Broadcast over KOMO, KFOA, KGW, KGO, KPO and KFI.

8:30 p. m.—Royal Ambassadors presenting their program of successes from musical comedies of the days gone by.

Broadcast over KHQ, KOMO, KFOA, KGW, KGO, KPO, KFI.

THURSDAY, APRIL 12

8:00 p. m.—Los Angeles studio program will present six distinctive features. Lou Kaplan's String Jazz Trio heads the list. Broadcast over KOMO, KFOA, KGW and KFI.

9:00 p. m.—Dodge Brothers presentation. Broadcast over KHQ, KOMO, KFOA, KGW, KGO, KPO and KFI.

9:30 p. m.—Moon Magic half hour brings a characteristic program of mystic music. Broadcast over KHQ, KOMO, KFOA and KGO.

FRIDAY, APRIL 13

8:00 p. m.—Wrigley Review with the quartet, the novelty male trio, the four vocal soloists and the xylophone, accordion, banjo and saxophone will give one of their imitable programs. Broadcast over KHQ, KOMO, KFOA, KGW, KGO, KPO and KFI.

9:00 p. m.—White Rock Concert. A saxophone octet will provide novelty entertainment during the evening. Broadcast over KOMO, KFOA, KGW, KGO, KPO and KFI.

9:30 p. m.—Retold Tales will dramatize O. Henry's story, "The Ethics of Pig." Broadcast over KHQ, KOMO, KFOA, KGW, KGO, KPO and KFI.

SATURDAY, APRIL 14

8:00 p. m.—RCA Hour brings the regular program of music and a talk by Henry M. Hyde entitled "Mars—Is It Inhabited?" Broadcast over KHQ, KOMO, KFOA, KGW, KGO, KPO, KFI.

9:00 p. m.—Philo Hour presents a galaxy of brilliant French composers. Broadcast over KHQ, KOMO, KFOA, KGW, KGO, KPO and KFI.

9:00 p. m.—Time broadcast.
10:00 p. m.—The Trocaderans' Dance Orch. cept Monday.

SUNDAY, APRIL 8

1:00 p. m.—Gold Strand Group will open the program with a selection from Tschai-kowsky. The orchestra is under the direction of Max Dolin.

Broadcast over KHQ, KOMO, KFOA, KGO, KPO and KFI.

3:00 p. m.—Sunday afternoon concert will be ushered in by Liszt's "Les Preludes," Charles H. Gabriel, Jr., pianist; Mary Groom, contralto, and the Arion Trio will assist.

Broadcast over KHQ, KOMO, KGW, KGO and KFI.

4:30 p. m.—Great Moments in History will present "Lee's Surrender to Grant."

Broadcast over KHQ, KOMO, KGW and KFI.

6:30 p. m.—Standard Symphony Hour.

Broadcast over KHQ, KOMO, KFOA, KGW, KGO, KPO and KFI.

9:00 p. m.—Atwater Kent program presents music of the better type in the third of the newly inaugurated series. Broadcast over KHQ, KOMO, KFOA, KGW, KGO, KPO and KFI.

MONDAY, APRIL 9

8:00 p. m.—Rudy Seiger's Shell Symphonists will play three request numbers during their program of classical music. Broadcast over KHQ, KOMO, KFOA, KGW, KGO, KPO and KFI.

9:00 p. m.—The Rounders will open their program with "Chloe," the new popular number. Typical Spanish and dreamy love songs are to be sung. Broadcast over KHQ, KOMO, KGO, KGW and KPO.

9:30 p. m.—Fisk "Time-to-Retire" Boys in a program of characteristic popular melodies.

Broadcast over KHQ, KOMO, KFOA, KGW, KGO and KPO.

10:00 p. m.—Broadways and Boulevards will transport the listener to the main street of his old home town.

Broadcast over KOMO and KGO.

TUESDAY, APRIL 10

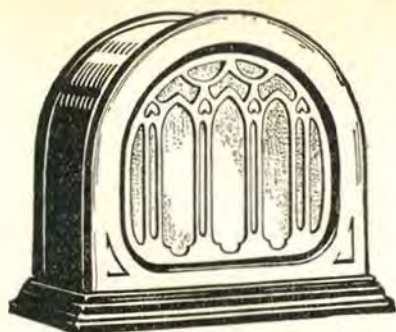
10:30 a. m.—Johnson Travelogue twins will visit Japan.

Broadcast over KGW, KGO, KPO and KFI.

11:00 a. m.—Royal Baking Power Hints will be given by Ruth Baker in her helpful 15-minute talk. Broadcast over KHQ, KOMO, KFOA, KGW, KGO, KPO and KFI.

Golden Bess AIR COLUMN **SPEAKER**

12 Sizes — WE. 2712
1929 Los Angeles St., L. A.



Rola Table Cabinet Speaker

MODEL 20. PRICE . . \$35

*Combining Performance
with Beauty*

THE new Rola Table Cabinet Speaker, Model 20, combines the utmost in loudspeaker performance with a beauty of design and finish that immediately places it in the class of the finer musical instruments.

This speaker reproduces everything which your set brings in, reproduces it with a clarity of tone and faithfulness to the original selection—vocal or instrumental—that is astonishing when heard for the first time.

Compare the Rola with any speaker at any price, on your set in your home. Then you will understand why the Rola is truthfully "the aristocrat of speakers."

*Your dealer will gladly arrange
for a comparative demonstration.*

LISTENWALTER & GOUGH

Incorporated

THE NEW

LOS ANGELES
918 E. FIRST ST.



SAN FRANCISCO
325 FIFTH STREET



ROBERT MORD

KFI

Los Angeles, Calif.—640 Kc.

5000 WATTS—468.5 METERS

Radio Central Super-Station of Earl C. Anthony, Inc.
1000 S. Hope. Phone WE. 0331. After 5 P. M., WE. 0337

DAILY EXCEPT SUNDAY—

- 11:15 a. m.—Sylvia, The Blind Cook (except Tues., Thurs., Sat.).
12:10 p. m.—Federal and State Market Reports, except Thursday.
12:15 p. m.—U. C. and U. S. Dept. of Agri. Talks, except Thursday.
1:15 p. m.—Talk on Traffic Violations (ex. Friday and Saturday).
5:00 p. m.—Big Brother Bob (except Saturday).
6:00 p. m.—White King Soap Male Quartet Dinner Hour. ex. Wed.
10:00 p. m.—N. B. C. Dance Music over P. C. N., except Mon., Sat.
3:00 p. m.—Fred Bruley, Saw artist;
3:30 p. m.—Bill Henry.

SUNDAY, APRIL 8

- 4:00 a. m.—Sunrise service; Virginia Flohri.
6:00 a. m.—Studio program.
8:00 a. m.—Douglas Hodson, tenor.
10:00 a. m.—Morning services
11:00 a. m.—Lenore Killian, contralto.
12:00 noon—Virginia McCoy, contralto.
1:00 p. m.—N. B. C.—American Fabric Co.
2:00 p. m.—Bethel Temple Young People.
3:00 p. m.—N. B. C.—Musical program.
4:00 p. m.—N. B. C.—Great Moments in History, over P. C. N.
5:00 p. m.—Studio program.
6:0 p. m.—N. B. C.—Standard Oil program,
7:29 p. m.—Father Ricard's weather forecast.
8:00 p. m.—Easter Mass by Juan Aguilar.
9:00 p. m.—N. B. C.—Atwater Kent. Co.
9:30 p. m.—Norma Byington, mezzo soprano;
10:00 p. m.—Aeolian Studio—Alex Reiley.

MONDAY, APRIL 9

- 12:00 noon—David Leavitt, ballads.
1:00 p. m.—Melba Melsing, Spanish songs.
2:00 p. m.—Mack Lask, ballads.
2:15 p. m.—Oscar Grafenstein, zither player.
2:30 p. m.—Edla Laurence, psychologist.
3:00 p. m.—Virginia McCoy, contralto.
3:30 p. m.—Little Meetin' House.
3:45 p. m.—Walter M. Strong.
4:00 p. m.—L. A. Fire Dept. Orchestra.
5:30 p. m.—Mr. Dunlap—Boards of Educ.
5:45 p. m.—Senator George W. Cartwright.
7:00 p. m.—KFI Symphonette.
8:00 p. m.—N. B. C.—Shell program.
8:30 p. m.—Los Angeles Philharmonic Orch.
10:00 p. m.—Packard Concert Orchestra.

TUESDAY, APRIL 10

- 10:30 a. m.—N. B. C.—Johnson Washer Co.
11:00 a. m.—N. B. C.—Royal Baking Powder.
11:15 a. m.—Georgia O. George.
11:45 a. m.—Modes & Mannequins by "Ivar."
12:30 p. m.—Studio program.
1:00 p. m.—Cliff Howell and Alan Haines.
1:30 p. m.—Purcell Mayer, violinist.
1:45 p. m.—Florence Joy, pianist.
2:00 p. m.—Elizabeth Wiest, concert pianist.
2:30 p. m.—Mary Bell Chapman, ballads.
3:00 p. m.—Marie Lohler, contralto.
3:50 p. m.—Betty Thompson, contralto.
4:00 p. m.—U. S. C. Course in Music.
4:30 p. m.—Dragon Hawaiian Trio.
5:30 p. m.—Prof. Carl S. Knoff.
5:50 p. m.—Louis DeJean, aviation talks.
7:00 p. m.—Nick Harris Detective Stories.
7:30 p. m.—Wm. McDougall, Scotch songs.
7:45 p. m.—Police Commissioner Thorpe.
8:00 p. m.—N. B. C.—National Carbon.
8:30 p. m.—N. B. C.—American Maize.
9:00 p. m.—John G. Rapp, Kolster Radio.

WEDNESDAY, APRIL 11

- 12:30 p. m.—Pasquin and Harris.
1:00 p. m.—La Mont Stetzer, baritone.
1:30 p. m.—L. A. Police Quartet.
2:00 p. m.—Georgia O. George.

- 4:00 p. m.—Bernice Morrison, solo pianist.
4:30 p. m.—Gent Brandy—Hollywood Boys.
5:30 p. m.—White King Male Quartet.
6:30 p. m.—N. B. C.—California Fruit Grow.
7:00 p. m.—Georgia O. George.
7:30 p. m.—Henry Starr, blues and ballads.
8:00 p. m.—N. B. C.—Associated Oil Co.
8:30 p. m.—N. B. C.—Royal Baking Powder
9:00 p. m.—Packard Concert Orch.

THURSDAY, APRIL 12

- 12:00 noon—David Leavitt, ballads.
12:30 p. m.—Alberts Bros. Milling Co.
1:00 p. m.—Mme. Irwin Kellogg Talk.
1:30 p. m.—Helen Pacino, ballads.
1:45 p. m.—Dr. O. S. Parrett—Talk.
2:00 p. m.—Sebastian's Cotton Club Orch.
3:00 p. m.—Shirley Mirkin, concert pianist.
3:30 p. m.—Norma West, soprano.
4:00 p. m.—U. S. C. Course in Music Appr.
4:30 p. m.—LeRoy Herron and Roy Hellrigel.
5:30 p. m.—Griffith Jones, attorney.
5:50 p. m.—Federal Business Association.
7:00 p. m.—Georgia O. George.
7:30 p. m.—Felipe Delgado—Spanish Half Hr.
8:00 p. m.—N. B. C.—Variety Hour;
9:00 p. m.—N. B. C.—Dodge Bros.' program,

FRIDAY, APRIL 13

- 12:25 p. m.—Franklin L. Graves Talk.
12:45 p. m.—Olma Pratt Kohl, pianist.
1:00 p. m.—Lois Crawford.
2:00 p. m.—Georgia O. George.
2:30 p. m.—Clarice Russell.
3:00 p. m.—Dolly McDonald.
3:30 p. m.—Burns Phillips, Marimbaphone.
3:45 p. m.—Aaron Consalez, Jr., pianist.
4:00 p. m.—L. A. Fire Department Orchestra
—Helen Guest, soloist.
5:30 p. m.—Southern Syncopaters.
7:00 p. m.—Paul Roberts and his Orchestra.
8:00 p. m.—N. B. C.—Wrigley program.
9:00 p. m.—N. B. C.—White Rock Min. Co.
9:30 p. m.—Beverly Hills Community Church

SATURDAY, APRIL 14

- 12:00 noon—Paul McNally.
12:30 p. m.—David Leavitt, ballads.
1:00 p. m.—Winona Ellis and Uke.
1:30 p. m.—Allen Bacon and his Collegians.
2:00 p. m.—Edward Lynn, talk.
2:30 p. m.—Douglas Hodson, tenor.
3:00 p. m.—Jean Lamph, contralto.
3:15 p. m.—Fannie Leskowitz, pianist.
3:30 p. m.—St Darling Arkansas Dance Orch.
4:00 p. m.—Faculty Four Male Quartet.
4:30 p. m.—Anna May Cirian, violinist.
5:00 p. m.—Francis Sullivan.
5:30 p. m.—Playlet by Gordon Moss.
5:50 p. m.—Louis Degan—Aviation Talks.
7:00 p. m.—KFI Symphonette.
8:00 p. m.—N. B. C.—RCA Hour.
9:00 p. m.—N. B. C.—Phila. Storage Battery.
10:00 p. m.—Packard Concert Orchestra.
11:00 p. m.—KFI Midnight Frolic.

GILFILLAN

SALES & SERVICE — HEMPSTEAD 5590
139 N. Larchmont Open Evenings

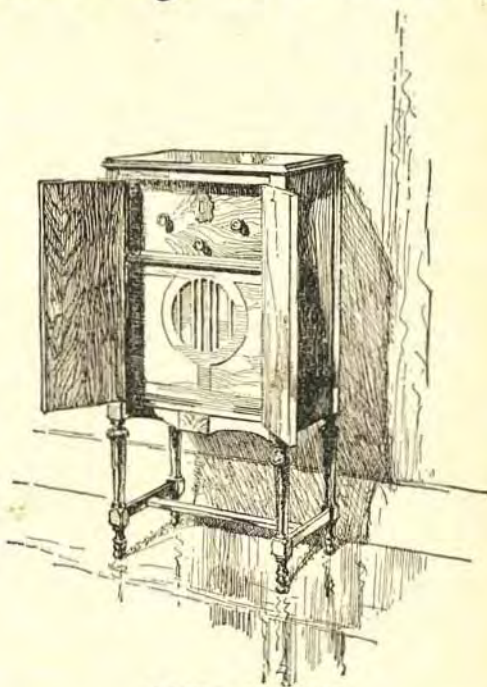
Newest Features
 Completely Equipped
 Light Socket Operation
 Moderately Priced

These new Gilfillan Models 55 and 65, are operated from the house circuit. The cabinets are walnut with a beautiful two-toned finish and very handsomely designed.

Gilfillan Model 55 complete with power supply, tubes and latest improved Rola Speaker. AC operated. \$247.50.



Gilfillan Model 65 complete with power supply, tubes and Jensen Dynamic Power Speaker. AC operated. \$282.50



Gilfillan Model 55

GILFILLAN RADIO
 No Batteries — ONE DIAL — Glorious Tone
 See New Models at Gilfillan Dealers

Distributors:

Southern California (except San Diego County)

GILFILLAN BROS., INC., Los Angeles

San Diego County—MOTOR HARDWARE & EQUIPMENT CO., San Diego

Arizona—NIELSEN RADIO & SPORTING GOODS CO., Phoenix



E. K. BARNES
Day-Time Director

KHJ

Los Angeles, Calif.—750 Kc.

500 WATTS—399.8 METERS

Times Bldg., First and Broadway. Owned and Operated by Don Lee, Calif. Dist. for Cadillac and LaSalle. Phone MET. 0700

E. K. Barnes
Day-Time Director
Glen R. Dolberg
Night-Time Director
C. M. C. Raymond
Commercial Director
Paul Rubenstein Kepner
Musical Director
Ernest G. Underwood
Technical Director

MONDAY, APRIL 9

- 2:00 p. m.—Elvia Allman's Surprise Package
4:00 p. m.—C. W. H. Smith, Western Air Express.
4:15 p. m.—M. S. Benesh, Sheriff's Office.
4:30 p. m.—Talk on "Child Psychology."
5:00 p. m.—Pacific States Savings & Loan Co. program.
7:00 p. m.—Sun Dodgers.
8:00 p. m.—KHJ Symphony Band.
9:00 p. m.—KHJ Concert Orchestra.

TUESDAY, APRIL 10

- 2:30 p. m.—Studio program.
4:00 p. m.—Dr. Frank McCoy on "Health."
4:15 p. m.—Speaker.
4:30 p. m.—"Jewish Literature and History"
7:00 p. m.—L. A. Police Dept. program.
7:30 p. m.—Winslow B. Felix Chevrolet Or.
8:00 p. m.—Maxwell House Coffee Concert.
9:00 p. m.—KHJ Mixed Quartet and Orch.

WEDNESDAY, APRIL 11 4

- 2:30 p. m.—Half hour with L. A. Public Library.
4:00 p. m.—Fred C. McNabb, garden talk.
7:00 p. m.—KHJ Symphonic Band.
8:00 p. m.—Pacific States Savings & Loan Co. program.
9:00 p. m.—KHJ Concert Orchestra.

THURSDAY, APRIL 12

- 2:30 p. m.—Studio program.
4:00 p. m.—Dr. Lovell, "Care of the Body."
4:30 p. m.—Florence Dobinson talk on the theater.
7:00 p. m.—Cadillac-LaSalle Concert Eight.
8:00 p. m.—Cartoonist's hour, Robert Wildhack.
9:00 p. m.—KHJ "Orioles" and Orchestra.

FRIDAY, APRIL 13

- 2:30 p. m.—Studio program.
4:00 p. m.—"Stories of American History."
4:30 p. m.—Council of International Relations.
5:45 p. m.—Auto Club of Southern Calif.
7:00 p. m.—Elvia Allman's Surprise Package
8:00 p. m.—KHJ Symphony Band.
9:00 p. m.—"Echoes of the Rialto" and KHJ Mixed Quartet.

SATURDAY, APRIL 14

- 2:30 p. m.—Art Pabst and his banjo.
4:00 p. m.—Talk on China.
4:30 p. m.—L. A. Playground Recreational Dept.
7:00 p. m.—KHJ Movie Club.
8:00 p. m.—KHJ Symphonic Band.
9:00 p. m.—KHJ Concert Orchestra and vocal soloists.
12:00 p. m.—KHJ Merry Makers.

- ### DAILY EXCEPT SUNDAY
- 8:00 a. m.—Sperry Flour Reveille Hour (ex. Sat.).
9:00 a. m.—Half Hour of Late Recordings.
9:30 a. m.—The Story Man and his Air Castle.
10:00 a. m.—A half hour at home.
12:00 noon—Earl Burtnett's Los Angeles Biltmore Hotel Orchestra.
12:30 p. m.—L. A. Times World Wide News.
1:30 p. m.—Charlie Wellman's program.
2:00 p. m.—Celeste Ryus, "Musical Appreciation" (ex. Mon.).
3:00 p. m.—Matinee Melody Masters.
5:00 p. m.—Sunset musical (except Mon.).
6:00 p. m.—Nightly Doings.
6:15 p. m.—Fitzgerald's Orthophonic and Ampico Concert (ex. Thurs.).
6:45 p. m.—L. A. Times World Wide News.
10:00 p. m.—Time signals, courtesy So. Pac.
10:00 p. m.—Earl Burtnett's Biltmore Orch. (ex. Sat.).

SUNDAY, APRIL 8

- 9:30 a. m.—KHJ Concert Ensemble.
10:30 a. m.—First M. E. Church, Albert Tufts, organist.
12:30 p. m.—Half hour of late recordings.
1:00 p. m.—The Viennese Quintet.
4:00 p. m.—Concert Ensemble and soloist.
5:00 p. m.—Twilight musicale.
6:00 p. m.—Nightly Doings.
6:15 p. m.—Orthophonic and Knabe Ampico program.
6:45 p. m.—World wide news, courtesy L. A. Times.
7:02 p. m.—First M. E. Church, Albert organist.
8:00 p. m.—KHJ Concert Orchestra.
9:00 p. m.—KHJ Concert Ensemble.
10:00 p. m.—Flamingo Sextet.
11:00 p. m.—Dance Orchestra. Time signals, courtesy Southern Pacific.

WALTER BIDDICK — Phone Westmore 9137

"A Complete Radio Program and Announcement Service"

Golden Bear AIR COLUMN SPEAKER

Beware of Imitations
Westmore 2712

LANSING SPEAKERS

"Surprisingly Better"

In all fairness to the artists who broadcast, and to yourself, you *must* hear the Lansing Model C Speaker. A self-contained power speaker with unequalled tonal range, that brings to you true enjoyment and appreciation of the many wonderful programs now being broadcast.

No extra power required.



Model C — \$42.50



Model B — \$27.50

Lansing Model B (shown on the left), is a moderately priced speaker that brings to the listener the actual reproduction of the musical program as it is produced in the studio, without distortion or over-emphasis of high or low notes.

Both Models B and C Are Furnished in Factory Models for Use in Cabinets

Manufactured by:

LANSING MANUFACTURING CO.

Los Angeles, California

Sales Agents: FRANK A. EMMET SALES CO.
6626 South McKinley Ave., Los Angeles, Calif.

TELEPHONE YOrk 8646



HAROLD ISBELL
Announcer

KNX Hollywood, Calif.—890 Kc.

500 Watts—337 Meters—Los Angeles Evening Express
Paul G. Hoffman's Studebaker Bldg., 6116 Hollywood Blvd.

"The Voice of Hollywood"

Phone HEMPstead 4101

Naylor Rogers
Manager and Program
Director

Glen Rice
Assistant Manager

N. D. Garver
Technical Engineer

- 4:30 p. m.—Little Jean and the Town Crier.
7:00 p. m.—Carthay Circle Theater.
7:30 p. m.—One-act play directed by Georgia Fifield, courtesy Overell Furniture Co.
8:00 p. m.—Log Cabin Bread Co. program.
9:30 p. m.—15 Minutes with Jean Leonard.

TUESDAY, APRIL 10

- 11:00 a. m.—French lessons.
4:00 p. m.—Little Joyce Coad.
7:00 p. m.—Grauman's Chinese Theater.
7:30 p. m.—Georgia O. George.
8:00 p. m.—"Tom and his Mule, Hercules."
9:00 p. m.—Courtesy program.

WEDNESDAY, APRIL 11

- 4:00 p. m.—Garden talk.
7:00 p. m.—Playgoers' Club, conducted by Wedgwood Nowell.
7:30 p. m.—KNX String Quintet.
8:00 p. m.—Bert Butterworth and his Air-
dales.
9:00 p. m.—Feature program.

THURSDAY, APRIL 12

- 11:00 a. m.—French lessons.
1:15 p. m.—Chas. Weeks on "Poultry Farm-
ing."
4:15 p. m.—Louise Johnson.
7:00 p. m.—Carthay Circle Theater organ re-
cital by Stanley Bently, courtesy of the
Overell Furniture Co.
8:00 p. m.—Calmon Luboviski, master vio-
linist; Claire Mellonino, pianist.
9:00 p. m.—15 Minutes with Gene Leonard.
9:45 p. m.—Feature program.

FRIDAY, APRIL 13

- 10:30 a. m.—Georgia O. George.
2:30 p. m.—Los Angeles District Federation
of Women's Clubs.
7:00 p. m.—Georgia O. George.
7:30 p. m.—Feature program.
8:00 p. m.—Royal Order of Optimistic Do-
nuts.
9:00 p. m.—Gilmore Oil Co. program.
9:45 p. m.—Main event, Hollywood Stadium.
10:45 p. m.—Gus Arnheim's Coconut Grove
Orchestra.

SATURDAY, APRIL 14

- 6:25 p. m.—Announcement of the services
of Los Angeles churches.
7:00 p. m.—Carthay Circle Theater.
7:30 p. m.—Playgoers' Club.
8:00 p. m.—Feature program.
8:30 p. m.—Mr. and Mrs. Radio Skit; Geor-
gia Fifield and E. J. Albright.
9:00 p. m.—Feature program.
12:00 p. m.—The Midnight Express.

DAILY EXCEPT SUNDAY

- 6:45 a. m.—Gold Seal Early Bird Exercises.
8:00 a. m.—Inspiration talk and prayer.
8:55 a. m.—Time Signals, Birthday Notices.
9:00 a. m.—C. P. R.'s Radio Shopping News.
10:00 a. m.—Town Crier of the Day.
10:30 a. m.—Kate Brew Vaughn, Household
Economics (Fri. and Sat.).
12:00 noon—Musical program.
12:30 p. m.—W. F. Alder Travelogue.
1:30 p. m.—The Bookworm.
2:00 p. m.—Evening Express Special pro-
gram.
2:30 p. m.—Musical program.
3:00 p. m.—C. P. R.'s musical program.
4:15 p. m.—Lost and Found Announcements,
stock market reports.
4:25 p. m.—Market Reports.
4:45 p. m.—"Own Your Own Home," by Chet
Mittendorf.
5:45 p. m.—"Amusement Tips."
6:00 p. m.—Paul Finstein's KNX Quintet.
6:30 p. m.—Biltmore Hotel Concert Orch.
10:00 p. m.—Hotel Ambassador, Gus Arn-
heims Orchestra (except Friday).

SUNDAY, APRIL 8

- 5:30 a. m.—Sunrise Services from Holly-
wood Bowl.
10:00 a. m.—First Presbyterian Church.
2:00 p. m.—City Park Board program.
4:00 p. m.—California P. T. A. program.
5:15 p. m.—All Souls Church.
6:00 p. m.—Talk by Ernest Holmes.
6:30 p. m.—First Unitarian Church.
7:00 p. m.—First Presbyterian Church.
8:00 p. m.—Josef Rosenfeld's Orch. from
Ambassador.
9:00 p. m.—Calmon Luboviski, master vio-
linist; Claire Mellonino, pianist.

MONDAY, APRIL 9

- 11:00 a. m.—Georgia O. George.
2:30 p. m.—"Human Nature."

Golden Bear AIR COLUMN
SPEAKER

Beware of Imitations
Westmore 2712

FERBEND "B" ELIMINATORS

90 Volt, \$13.50

"The Last Word in "B" Eliminators"
NO LIQUIDS — NO ACIDS — NO HUM
Authorized Steinite Dealer

180 Volt, \$20.50

9TH AND UNION RADIO SHOP

1605 West 9th St.

DUnkirk 4091

Los Angeles

(Equipped to take care of all service work.)



Making History

Less Tubes and Speaker

The smashing radio hit of the year—the new Atwater Kent A.C. Sets.

People who went without radio until A. C. operation could be perfected are flocking in to buy the new Atwater Kent.

Over 150,000 since January 1st.

RAY THOMAS INC.
Atwater Kent Distributor

1248 S. Hope St. WE 6334
LOS ANGELES



TOM MITCHELL
Business Manager

KMTR Hollywood, Calif.—570 Kc.

500 WATTS—526 METERS

KMTR RADIO STATION, 1028 N. Highland Ave. HOLLY 3026

Forbes Van Why
Chief Engineer

Tom Mitchell
Business Manager

Loren Powell
Musical Director

Leslie Adams
Program Director and
Night Announcer

7:30 p. m.—Henry Starr, the "Pie Man."
8:00 p. m.—General Petroleum Corp. of Cal.,
City School program.

TUESDAY, APRIL 10

- DAILY EXCEPT SUNDAY**
- 7:00 a. m.—Setting-up exercises, by Prof. Barclay L. Seaverns.
7:30 a. m.—Louise Howatt's Hour of Happiness.
8:57 a. m.—Time signals.
10:00 a. m.—KMTR Radio Press Agent Hour, short business announcements and musical selections (except Tues.).
11:00 a. m.—Al Wellman's Luncheon bulletin.
12:00 noon—Luncheon program.
12:30 p. m.—Walter Biddick's So. Cal. prog.
4:30 p. m.—Brother Tom's Smiling Circle.
5:45 p. m.—Timely Topics featuring amusement and cafe announcements.
6:00 p. m.—KMTR Concert Orchestra.
8:00 p. m.—Loren Powell's Little Symphony and assisting artists.
9:00 p. m.—Musical program (except Tuesday and Friday).
10:00 p. m.—Miller's Cafe Lafayette Dance Orchestra.
- SUNDAY, APRIL 8**
- 7:00 p. m.—June Pursell and Ron Wilson.
8:00 p. m.—Loren Powell's Little Symphony.
- MONDAY, APRIL 9**
- 8:30 a. m.—Dr. Paul J. Dorosh.
1:30 p. m.—Franklin L. Graves. "Business Efficiency."
7:00 p. m.—Dr. Mars Baumgardt.

- 10:00 a. m.—Georgia O. George.
1:30 p. m.—KMTR Radio Press Agent hour.
2:30 p. m.—L. A. Police Quartet.
3:00 p. m.—Parke & Melford Serogen prog.
7:00 p. m.—Bruz Fletcher, vocalist, and Leslie Adams.
7:30 p. m.—Overell Furniture Co., featuring Overell KMTR Players in a one-act play directed by Edward Murphy.
8:00 p. m.—Loren Powell's Little Symphony.
9:00 p. m.—Boulevard Furniture Co., featuring the Melody Quintet.
9:30 p. m.—Musical program.

WEDNESDAY, APRIL 11

- 12:00 p. m.—Mae Day Beauty Salon.
1:30 p. m.—Arlene Jackson.
2:00 p. m.—Parke & Melford Serogen.
2:30 p. m.—Hollywood Chamber of Com.
3:30 p. m.—Carthay Circle Theatre artists.
7:00 p. m.—Hugh Otto Knovit.
7:30 p. m.—Fraternal Brotherhood program.
8:00 p. m.—Southern California Edison Symphonic Orchestra.

THURSDAY, APRIL 12

- 1:30 p. m.—Parke & Melford Serogen.
4:15 p. m.—Talk on Marriage by Walter Brown Murray.
7:00 p. m.—Metropolitan Dance Orchestra.
8:00 p. m.—Loren Powell's Little Symphony.

FRIDAY, APRIL 13

- 8:30 a. m.—Gordon Whitnall.
12:00 noon—Members of "Excess Baggage" cast.
1:30 p. m.—Parke & Melford Serogen.
7:00 p. m.—Girl Frineds' Trio.
- SATURDAY, APRIL 14**
- 7:00 p. m.—Arlene Jackson.
7:00 p. m.—Talk, Sheriff's Office.
7:10 p. m.—Songs, Tom Mitchell, baritone.

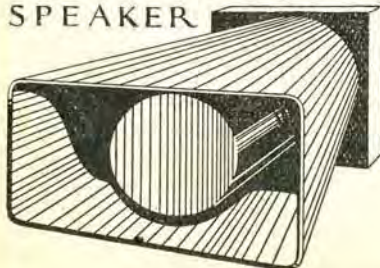
Your Dealer IN RADIO

Is part of your community, he is in business to serve you, and his interests are your interests—consult your dealer concerning Radio.

RADIO  W.L.

2269 E. 51st
DE. 9866

AEROFONIC
AIR COLUMN
SPEAKER



There is no substitute for natural tone reproduction.

Aerofonic Air Column Speakers have no tone of their own but give you the true voice of the artist amplified without distortion. The bass notes are reproduced as they are rendered and not over-exaggerated. The full range comes clearly. Less power is required to operate the Aerofonic Air Column Speaker. Phone Charley Weinberg for a demonstration.

Manufactured Exclusively By

THE AEROFONIC COMPANY
Hill at 35th St. HU. 5770 Los Angeles

\$\$\$ FOR YOUR RADIO

Your Radio, No Matter if Crystal Set, Is Worth More Than You Think—To Us

For a Limited Time We Will Make You a
VERY LIBERAL TRADE ALLOWANCE
 on your Receiving Set or Phonograph, due to a special factory arrangement, on a brand-new

FEDERAL RADIO



6 Tube
All Electric

We are the oldest and best equipped Federal Sales and Service in the city.

The **FEDERAL** has the longest and strongest Guarantee in the world.

"It exceeds your greatest expectations."

All **FEDERALS** purchased from us are serviced **FREE** for one year.

Don't wait—come in at once. Bring in your Radio or its name and model number. Then choose the **FEDERAL** you like the best. Prices ranging from \$75.00 to \$1250.00.

*You are not investing your money in billboards when buying a **FEDERAL***

SERVICE 100%

GUARANTEE 100%

RIMPAU RADIO

J. B. HERFORD
4808 W. Washington

WH. 3061

G. V. WHITEHEAD
LOS ANGELES



BILL RAY
Announcer

KFWB Hollywood, Calif.—850 Kc.

1000 WATTS—352.7 METERS
WARNER BROS. MOTION PICTURE STUDIOS
Warner Bros.' West Coast Studios, 5842 Sunset Blvd.
"Movie Land"

Phone GL. 9461

Gerald L. King

Manager

Wm. Ray

Assistant Manager

Florence Israel

Program Arranger

Leslie Hewitt

Chief Technician

4:00 p. m.—Ten Colored Melody Lads.

5:00 p. m.—Radio Travel Tales.

7:00 p. m.—Courtesy program.

8:00 p. m.—June Parker, songs; Don Warner.

9:00 p. m.—David Percy, baritone; LeGrand Concert Trio.

TUESDAY, APRIL 10

5:00 p. m.—Courtesy program.

7:00 p. m.—KFWB String Quintet.

8:00 p. m.—Vernon Rickard, tenor; Leon Belasky's European Quartet.

9:00 p. m.—Sleepy Time Hour.

WEDNESDAY, APRIL 11

8:00 a. m.—"Diet," by Dr. Paul J. Dorosh.

9:45 p. m.—Spanish program.

10:15 a. m.—Characteristic Hour.

5:00 p. m.—Radio Travel Tales.

7:00 p. m.—Address.

7:15 p. m.—KFWB String Quintet.

8:00 p. m.—Emma Kimmel, soprano; Cyril Godwin's Concert Trio.

9:00 p. m.—Ruth Payette, soprano, and Otto Ploetz, tenor, in duets; Louise Sullivan's Trio.

THURSDAY, APRIL 12

5:00 p. m.—Courtesy program.

7:00 p. m.—KFWB Concert Quintet.

8:00 p. m.—Ann Grey, blues; Don Warner.

9:00 p. m.—Ina Mitchell Butler, soprano; KFWB String Quintet.

FRIDAY, APRIL 13

5:00 p. m.—Radio Travel Talks.

7:00 p. m.—KFWB String Quintet.

8:00 p. m.—Vernon Rickard, tenor; Leon Belasky's European Quartet.

9:00 p. m.—Dan Santos' Hawaiian Trio; Arlene Jackson, blues; Don and Frank, songs.

SATURDAY, APRIL 14

5:00 p. m.—Program by courtesy.

7:00 p. m.—A one-act play, presented by the Playshop Players.

8:00 p. m.—The MonaMotor Oilers and

9:00 p. m.—Ralph Markey and his Musical Emma Kimmel, soprano.

Keys.

- DAILY EXCEPT SUNDAY**
- 9:00 a. m.—Spanish program, except Wed.
9:30 a. m.—Characteristic hour (ex. Mon. and Wed.).
- 10:30 a. m.—Musical program, except Wed.
11:00 a. m.—Housekeepers Chat by Aunt Sammy (ex. Wed. and Sat.).
- 11:15 a. m.—Musical program (ex. Wed. and Sat.).
- 11:30 a. m.—KFWB Shopping Directory.
12:30 p. m.—Courtesy program.
1:00 p. m.—Air Journal.
2:15 p. m.—Pacific Coast League baseball games (ex. Mon.).
- 5:15 p. m.—Radio Review.
5:45 p. m.—Town Tattler.
6:00 p. m.—Ray Bailey's Quintet.
6:30 p. m.—Harry Jackson and entertainers from Pig'n Whistle, Hollywood.
7:30 p. m.—Musical program.
7:50 p. m.—Daily News (ex. Sat.).
10:00 p. m.—Cinderella Roof Orch., ex. Sat.

SUNDAY, APRIL 8

- 10:00 a. m.—Courtesy program.
11:00 a. m.—John Wright, the Right Tailor.
2:00 p. m.—Musical program.
2:15 p. m.—Pacific Coast League Baseball Game.
7:00 p. m.—Music.
7:15 p. m.—Talk on "Radio Interference."
7:20 p. m.—Harry Jackson and entertainers.
7:50 p. m.—Daily News.
8:00 p. m.—Light Opera Hour, by courtesy of the Overell Furniture Company;
9:00 p. m.—Daily News Items.
9:10 p. m.—Harry G. Keiper and Orchestra.

MONDAY, APRIL 9

- 2:15 p. m.—Ralph Markey and his Musical Key.

6:30-7 NITELY **ARDEN** *Certified MILK* **MUSICAL PROGRAM KFWB**

Golden Bear AIR COLUMN **SPEAKER**

12 Sizes — WE. 2712
1929 Los Angeles St., L. A.

MAIL THIS AD IN TO US FOR INFORMATION REGARDING OUR MONTHLY INSPECTION SERVICE

We Specialize in **EVENING SERVICE**. Open Until 9:00 P. M.

We have complete equipment for servicing your A.C. set correctly. We guarantee to put your set (regardless of make) in perfect condition. Send for our FREE Radio Log Card.

RADIO SERVICE SHOP — GRAnite 0874

6209 Santa Monica Blvd.

Hollywood, Calif.

It will pay you

~ in dollars and cents, weeks and months ~

to get the

EVEREADY LAYERBILT

This is the patented Eveready Layerbilt, the unique "B" battery that contains no waste spaces or materials between the cells. No other battery is made like it.

THE most economical Eveready Battery is the Eveready Layerbilt. You will spend less money for "B" batteries, and enjoy better ones, if you always get the Eveready Layerbilt. It is the best "B" battery we know how to build, and we have been building dry batteries for 33 years. If during all that time we had not continually increased our skill, added to our knowledge, and built better and better batteries, the name Eveready would not have the reputation it enjoys today among battery users.

Inside the Eveready Layerbilt are unique flat cells, instead of cylindrical ones as in all other dry cell "B" batteries. The flat cells pack in the box tightly; there is no

waste space between them. The flat form gives the active materials larger surfaces to act on each other. These flat cells actually produce more current per unit of materials—by all our tests they are the most efficient dry cells made. That's why the Eveready Layerbilt lasts longer.

So long does it last that the effort of replacement after months of use seems slight indeed. During all those months you enjoy Battery Power, pure Direct Current, hum-free, silent, uniform, dependable. You get the best reception of which your receiver is capable. Any good battery will give you Battery Power; the very smallest Eveready will do so. But the Eveready Layerbilt "B" Battery No. 486, the one that contains

Illustrated to the left is the cylindrical cell type of "B" battery construction. Each cell is a unit connected to the others by soldered wires. The space between the cells is wasted, useless.



Eveready's exclusive invention of the efficient flat dry cell, lasts longest.

National Carbon Co., Inc.
New York San Francisco



Unit of Union Carbide and
Carbon Corporation

**Radio is better with
Battery Power**

Tuesday night is Eveready
Hour Night
East of the Rockies
9 P. M., Eastern Standard Time
Through WEAJ and associated
N. B. C. stations

On the Pacific Coast
8 P. M., Pacific Standard Time
Through N. B. C. Pacific Coast
network

EVEREADY
Radio Batteries
—they last longer

The air is full of things you shouldn't miss





PAUL REESE

KNRC

Santa Monica, Cal.—800 Kc.

500 WATTS—375 METERS
Municipal Auditorium, Ocean Park, Santa Monica, Calif.
Phone Santa Monica 63-101
Los Angeles Studio: Elks' Temple 99—Dunkirk 5154
Owned and Operated by Kierulff & Ravenscroft, Inc.

R. L. Rust
Mngr. and Daytime Dir.

Paul Reese
Night Director

James Burroughs
Program Director

Margaret MacDonald Shontz
Assistant Program Director

C. B. Juneau
Transmission Engineer

5:45 p. m.—String ensemble with Phyllis Campbell, soprano.

7:00 p. m.—Ben Hur Hour, with Elks 99 Dance Orchestra.

9:00 p. m.—Evelyn Paddock Smith, concert pianiste; Paul Reese, tenor; Air Theater Headline Trio.

10:00 p. m.—L. A. Creamery Hour, with Zoellner Quartet.

11:00 p. m.—Elks Toast.

DAILY EXCEPT SUNDAY

1:00 p. m.—Siesta Hour, Albert Tufts at the console of the Elks mighty organ.

2:00 p. m.—Air Theater String Ensemble, Paul Reese, tenor.

3:00 p. m.—Santa Monica Municipal Band Concert.

5:00 p. m.—Air Theater Jewel Box, with California Banjo Boys.

5:45 p. m.—"Castles in the Air," Albert Tufts at console of the Elks mighty organ.

6:45 p. m.—What's Doing in Elkdome.

7:00 p. m.—Elks 99 Dance Orchestra.

8:00 p. m.—Santa Monica Municipal Band Concert.

9:00 p. m.—Air Theater Headliner.

10:00 p. m.—Air Theater Dance Orchestra.

11:00 p. m.—Elks Toast.

SUNDAY, APRIL 8

9:45 a. m.—International Bible Students.

10:45 a. m.—Pilgrim Lutheran Church.

1:30 p. m.—International Bible Students.

2:30 p. m.—Santa Monica Municipal Band.

4:00 p. m.—International Bible Students.

4:30 p. m.—Vesper services; Sibley Pease, organist.

6:15 p. m.—Pilgrim Lutheran Church.

7:00 p. m.—International Bible Students.

8:00 p. m.—Santa Monica Municipal Band.

9:00 p. m.—Judge J. F. Rutherford, Pres., International Bible Students' Assn., lecture.

10:00 p. m.—Int'l. Bible Students' Association broadcasting the Elks' mighty organ; Albert Tufts, organist.

MONDAY, APRIL 9

2:00 p. m.—Helen Guest, Joe Bishop and Augie LaPlaca.

5:45 p. m.—String Ensemble, with Mary Goukler, soprano.

7:00 p. m.—Sunkist Hour, Elks 99 Orchestra, Janis and Chaplow.

9:00 p. m.—L. A. Investment Co. Hr.; Ruthellen Miller, soprano; Sherman Hunter, tenor; Air Theater Headline Trio.

10:00 p. m.—An Hour in Melody Lane, with Air Theater Dance Orchestra.

11:00 p. m.—Elks Toast.

TUESDAY, APRIL 10

2:00 p. m.—Helen Guest, Harvey Porter, Lily Irene, Peggy Price.

WEDNESDAY APRIL 11

2:00 p. m.—Helen Guest, Gene Johnston, Hal Chasnoff, Joe Bishop and Augie LaPlaca.

5:45 p. m.—String ensemble, with Gilbert Smith, tenor.

7:00 p. m.—Globe A-1 Hour—Loenard Van Berg, tenor, with Elks 99 Dance Orchestra.

9:00 p. m.—Sunkist Hour, with Lyric Trio.

10:00 p. m.—An Hour in Melody Lane, with Air Theater Dance Orchestra.

11:00 p. m.—Elks Toast.

THURSDAY, APRIL 12

2:00 p. m.—Helen Guest, Gloria Stratton, Peggy Price, Marion Boogar.

5:45 p. m.—String ensemble, with W. Ernest Feutz, tenor.

7:00 p. m.—White Kings Hour; Janis and Chaplow; Elks 99 Dance Orchestra.

9:00 p. m.—Ben Hur Coffee Hour; Phyllis Campbell, contralto; Paul Reese, tenor; Lilyan Ariel, concert pianiste.

10:00 p. m.—A nHour in Melody Lane, with Air Theater Dance Orchestra.

11:00 p. m.—Elks Toast.

FRIDAY, APRIL 13

2:00 p. m.—Helen Guest, Clarence Badger, Royal Babbitt, Marion Boogar.

5:45 p. m.—Air Theater Harmony Weavers, string ensemble, with Phyllis Campbell, contralto.

7:00 p. m.—Bishop's Honeymoon Sweet Hour with Helen Guest.

9:00 p. m.—Ruthellen Miller, soprano; Sherman Hunter, tenor; Headline Trio.

10:00 p. m.—An Hour in Melody Lane, with Air Theater Dance Orchestra.

11:00 p. m.—Elks Toast.

SATURDAY, APRIL 14

2:00 p. m.—Helen Guest, Harvey Porter, Joe Bishop and Augie LaPlaca, Lily Irene, Royal Babbitt.

5:45 p. m.—String ensemble, with W. Ernest Feutz, tenor.

7:00 p. m.—Paritas Hour; Leonard Van Berg; Elks 99 Dance Orchestra.

9:00 p. m.—White King Hour.

11:00 p. m.—Air Theater program.

WALTER BIDDICK — Phone Westmore 9137
"A Complete Radio Program and Announcement Service"

TRADE IN YOUR OLD SET

For a Limited Time Only

on

FEDERAL ORTHO-SONIC



6-TUBE
ALL ELECTRIC

How old is your radio? We want it, no matter what type, size or make—or age. It is worth money to you—and certainly to us. No matter whether you now own a crystal set—we want it. If you have a phonograph, we will take it.

The manufacturers of of **FEDERAL** radio have authorized us to offer you this very special allowance in trade for either an electric or battery-operated Federal.

INVESTIGATE THIS OFFER

DON'T WAIT—come in at once. In all of our experience no plan so liberal has been offered the people of this city.

(Authorized Long Beach Dealers)

HOULETTE MUSIC CO.

622 Pine Ave.

Phone 673-285

LONG BEACH, CALIF.



LESLIE MAWHINNEY
Prog. Mgr. and Announcer

KPLA Los Angeles, Calif.—1040 Kc.

500 WATTS—288.3 METERS
Commercial Exchange Building, Eighth and Olive Streets
Examiner and Romola Station

Phone TRinity 3202

Bertram O. Heller
Business Manager
Leslie Mawhinney
Program Manager and Day
Announcer
Roland Colbert
Engineer
Nelson Case
Assistant Program Mgr.
and Night Announcer

DAILY EXCEPT SUNDAY

- 10:00 a. m.—Records, courtesy of Barker Bros., (except Tues., Thurs., Sat.).
10:30 a. m.—Prudence Penny, courtesy of L. A. Examiner (except Thurs., Sat.).
11:00 a. m.—KPLA Diversities.
3:00 p. m.—Palais de Dance, featuring Ralph Markey and his Musical Keys.
4:00 p. m.—Health Bulletin (except Saturday).
4:05 p. m.—Records, courtesy of Barker Bros.
6:00 p. m.—Dinner hour program.
8:00 p. m.—KPLA Florentine Quintet and soloists.
10:00 p. m.—Palais de Dance.

SUNDAY, APRIL 8

- 8:00 p. m.—Romola Theater Orchestra; Billy Barron, Katherine O'Neill and others.

MONDAY, APRIL 9

- 5:00 p. m.—Spanish Course.
7:00 p. m.—Nelson Case.
7:30 p. m.—Popular program, Katherine O'Neill.
9:00 p. m.—Romola Theater Orch.; Leonard Van Berg, soloist.

- 10:30 a. m.—Records through the courtesy of Barker Bros.

TUESDAY, APRIL 10

- 7:00 p. m.—Senator George W. Cartwright.
7:15 p. m.—Bob Harker and Tod Waterman.
9:00 p. m.—Fred Leedom Scott, tenor, and James Murray, baritone.
9:30 p. m.—Billy Barron, Katherine O'Neill, Doris Decker.

WEDNESDAY, APRIL 11

- 5:00 p. m.—Spanish Course.
7:00 p. m.—G. E. Roletti, Coral Atkins.
7:30 p. m.—Frank Barry, tenor.
9:00 p. m.—Emma Kimmell, soprano; Pat O'Neil, Irish baritone; Gray T. Sampson, pianist.

THURSDAY, APRIL 12

- 10:30 a. m.—Records, through courtesy of Barker Bros.
7:00 p. m.—Glen Edmunds and Collegians.
9:00 p. m.—Romola Theater Orchestra, with vocal soloists.

FRIDAY, APRIL 13

- 2:30 p. m.—Bureau of Public Safety of the L. A. Police Dept.
5:00 p. m.—Spanish Course.
7:00 p. m.—Nelson Case.
7:30 p. m.—Helene Delzel, soprano; Coral Atkins, pianist.
9:00 p. m.—Cecil Fry and his Blue Three; Johnny Laughlin, piano solos; Jovita Jordan, Harry Coe.

SATURDAY, APRIL 14

- 10:30 a. m.—Records, through the courtesy of Barker Bros.
7:00 p. m.—Studio program, with Jean Talbot, piano solos; Doris Decker, Katherine O'Neill, Leonard Van Berg.
9:00 p. m.—Fay Sisters and Cliff Gunning.



Major Lawrence Mott
Announcer

KFWO

Major Lawrence Mott
Owner-Operator
Miss Frances Hewitt
Studio and Program Dir.

DAILY EXCEPT MONDAY

- 9:30 a. m.—Unity Half Hour, Miss Hewitt.
12:30 p. m.—Hotel St. Catherine Orchestra (except Thursday).
8:00 p. m.—Unity Half Hour, Major Lawrence Mott.
9:00 p. m.—Dance program.
SUNDAY, APRIL 8
6:00 p. m.—Light Opera.
7:00 p. m.—Golden Hour.
8:30 p. m.—Hotel St. Catherine Orchestra.
9:15 p. m.—Grand Opera program.

Avalon, Calif.—1000 Kc.

250 Watts—300 Meters and 5656 KC.—53.07 Meters
THE CATALINA ISLAND STATION
"The Isle with a Smile"

TUESDAY, APRIL 10

- 6:00 p. m.—Popular concert.
7:00 p. m.—Studio program.
8:30 p. m.—Stories of musicians and their works.
9:00 p. m.—Dance program.

WEDNESDAY, APRIL 11

- 6:00 p. m.—Varied instrumental music.
7:00 p. m.—Symphonic concert.
8:30 p. m.—Song recital.

THURSDAY, APRIL 12

- 6:00 p. m.—Vaudeville and fun.
7:00 p. m.—Golden Hour.
8:30 p. m.—Progress of Science Talk, Major Mott.

FRIDAY, MARCH 13

- 6:00 p. m.—Grand Opera and the classics.
7:00 p. m.—Organ and instrumental.
8:30 p. m.—Poetry and Books, Major Mott.

SATURDAY, APRIL 14

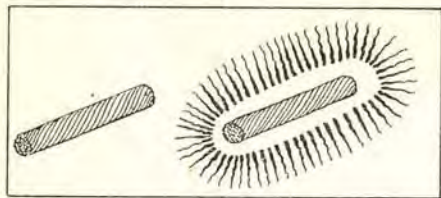
- 6:00 p. m.—Modern semi-classic and popular concert.
7:00 p. m.—Golden Hour.
8:30 p. m.—Poetry of all ages and nations, Major Mott.

Western Electric Speakers—Amplifiers
Childs' Lab., 2310 So. Union

THE "AURORA" RADIUM

ANTENNA AND GROUND

A New Achievement in Radio Science



Left Above — Section of plain antenna.

Right Above — Radium treated antenna, illustrating ionization proven by tests.

TO IONIZE

the air surrounding your antenna lowers the resistance and makes possible reception of

REAL DISTANCE

as well as improved local reception.

This can ONLY be done by one method, namely by using an antenna which has been treated with the rare elements:

Radium-Thorium-Uranium

All of these elements exist in the high grade ores used in the special process of producing the

Aurora Antenna and Ground

The ONLY antenna and ground which has a protective coating that is ALSO a conductor of electro-magnetic energy.

The Aurora Antenna and Ground is priced as follows:

5 Wire Cage Kit, with 25 ft. Lead-in, \$12.50, including Ground Plates

Note.—This Cage Antenna and Ground possesses a unique feature in that both may be easily dismantled and packed in 2 in. x 10 in. carton, a desirable feature for camping trips.

In view of the scarcity of high-grade Radium Ores and uncertainty of supply, the above prices are subject to change.

Ask Your Dealer or Order Direct from Factory:

The AURORA LABORATORIES

Vermont 9469

4917 South Western Avenue Los Angeles, California, U. S. A.



Example of exposure made thru several thicknesses of light-proof paper by a section of antenna treated with high-grade Radium Ore, showing clearly the effect of ionization.



OTTO HOEG
Musical Director

KGfJ Los Angeles, Calif.—1410 Kc.

212.6 METERS—Washington Blvd. at Oak St.

"Keeping Good Folks Joyful Twenty-four Hours a Day"

Owned and Operated by

Ben S. McGlashan

Otto Hoeg

Musical Director

Calvin J. Smith

General Manager

Phones:

Westmore 7777

Westmore 7778

DAILY EXCEPT SUNDAY

- 12:00 p. m.—"Nite Owl" program.
6:30 a. m.—Breakfast Frolic.
8:30 a. m.—Gordon Smith's Radiotising Service.
9:30 a. m.—Educational talks.
10:00 a. m.—Semi-classical program.
11:00 a. m.—Studio program.
12:00 m.—Uncle Walt's Luncheon Hour.
1:00 p. m.—Studio hour.
2:30 p. m.—Frank Martin, tenor; Otto Hoeg, pianist.
3:30 p. m.—Studio hour.
4:30 p. m.—Amateur Hour for tryouts.
5:00 p. m.—Studio Program.
5:30 p. m.—Market Reports, U. S. Dept. of Agriculture.
6:00 p. m.—John Wright's Orchestra.
7:00 p. m.—Gordon Smith's Radiotising Service.
8:00 p. m.—El Patio Ballroom Orchestra by remote control.
10:00 p. m.—Studio program.

SUNDAY, APRIL 8

- 12:01 a. m.—Popular music on the Electrola.
10:00 a. m.—Kaplan and Beelby, organ and violin; Peggy Prices, blues singer.
12:30 p. m.—Merle Holmes Elte Trio; Hoot Gibson's Hawaiian Trio.
2:30 p. m.—Frank Martin, Don Hunt, Peggy Price.

- 4:00 p. m.—Marie Crowe, soprano; Bill Steinbrenner, violin.
6:00 p. m.—John Wright Orchestra.
7:00 p. m.—Semi-classical hour.
9:30 p. m.—Haywire Three, Norman Johnson, yodeller.

MONDAY, APRIL 9

- 12:00 noon—Elite Girls.
2:00 p. m.—L. A. Police Quartet.
7:00 p. m.—Charlie Davis, songs.
10:00 p. m.—Emil Groh, pianist, Golden State Hawaiians.

TUESDAY, APRIL 10

- 9:30 a. m.—Bob Roper—Health Talk.
12:00 noon—Elite Girls.
2:00 p. m.—Harry J. Allen, tenor.
3:30 p. m.—Frank and Don; Charlie Cole.
7:00 p. m.—Two Little Redheads.

WEDNESDAY, APRIL 11

- 9:30 a. m.—Mrs. Claire Charles.
12:00 noon—Elite Girls.
3:30 p. m.—Hale Hooper, tenor.
7:00 p. m.—Charlie Davis, uke and songs; Skeet Wakefield.

THURSDAY, APRIL 12

- 12:00 noon—Elite Girls.
2:00 p. m.—Harry J. Allen, tenor.
3:30 p. m.—Frank and Don, harmony team.
7:00 p. m.—Hal Roach Studio Orchestra.
10:00 p. m.—Shadowland Serenaders.

FRIDAY, APRIL 13

- 9:30 a. m.—Bob Roper—Health Talk.
12:00 noon—Elite Girls.
3:30 p. m.—Frank and Don, harmony team.
7:00 p. m.—Golden State Hawaiian Trio.

SATURDAY, APRIL 14

- 12:00 noon—Elite Girls.
2:00 p. m.—Harry J. Allen, tenor.
3:30 p. m.—Frank and Don, harmony team.
7:00 p. m.—Keystone String Quartet.



EDMUND LYTTON
Program Director

KEJK Beverly Hills, Cal.—1190 Kc.

250 WATTS—252 METERS

Owned and Operated by EARNEST J. KRAUSE, INC.
Earnest J. Krause, Inc., Bldg., Beverly Hills, OXford 1036

Edmund Lytton
Studio and Program Dir.

Lucile Ray
Assistant Director

T. S. Friedberger
Business Manager

Freeman Lang
Technical Director

Charles Rush
Transmission Engineer

10:30 p. m.—Lilyan May Challenger.

TUESDAY, APRIL 10

- 6:00 p. m.—Dinner hour concert.
7:00 p. m.—Hawaiian music.
7:30 p. m.—KEJK Trio.
8:00 p. m.—Angels of the Air.
10:00 p. m.—Concert hour.

THURSDAY, APRIL 12

- 6:00 p. m.—Jameson and Moody.
6:30 p. m.—Dinner hour concert.
7:00 p. m.—Boy Scouts Band.
7:30 p. m.—Male quartet.
8:00 p. m.—Spanish Orchestra.
10:00 p. m.—Concert hour.

FRIDAY, APRIL 13

- 6:00 p. m.—Dinner hour concert.
7:00 p. m.—Hawaiian Trio.
7:30 p. m.—Lilyan May Challenger.
8:00 p. m.—Dr. Louis Conrad.
8:15 p. m.—Louise New, soprano; Reginald Taylor, baritone.
10:00 p. m.—Vocal Trio with Chas. Reese, violinist.

DAILY EXCEPT SUNDAY, WEDNESDAY AND SATURDAY

- 9:00 p. m.—KEJK Dance Orchestra.
11:00 p. m.—Request record hour.

MONDAY, APRIL 9

- 6:00 p. m.—Jameson and Moody.
6:30 p. m.—Dinner hour concert.
7:30 p. m.—Melancholy Jim and Joe Hawley
8:00 p. m.—Mixed Quartet.
10:00 p. m.—KEJK String Trio.



Aimee Semple McPherson

KFSG Los Angeles, Calif.—1190 Kc.

500 Watts—252.0 Meters. Angelus Temple, Echo Park. Fl. 5129

"Four Square Gospel"

Aimee Semple McPherson
Founder, President

Roderick H. Morrison
Manager

P. S. Lucas
Technician in Charge

C. N. Tucker
Announcer

and group, Grey Studio.
3:00 p. m.—Santa Monica Branch Church.
5:00 p. m.—Vesper hour; organ recital, Esther Fricke.

TUESDAY, APRIL 10

3:00 p. m.—L. I. F. E. Band concert, Noland Tucker, conductor.
5:00 p. m.—Book lover's hour.

WEDNESDAY, APRIL 11

2:30 p. m.—Divine healing service.
6:00 p. m.—Organ recital.
7:00 p. m.—Symphony Orchestra concert.
7:30 p. m.—Water baptismal service.

THURSDAY, APRIL 12

3:00 p. m.—Rev. Britton and the Alhambra group.
5:00 p. m.—Vesper hour.

FRIDAY, APRIL 13

3:00 p. m.—Bertha Scramton and Pasadena group.
5:00 p. m.—World travel hour.

SATURDAY, APRIL 14

2:00 p. m.—Children's happy hour.
3:00 p. m.—Crusader hour.
5:00 p. m.—The Banjo Club.
7:30 p. m.—Divine healing service.

DAILY EXCEPT SUNDAY
7:00 a. m.—Family Altar.
8:00 a. m.—Bible Study Hour.
10:30 a. m.—Sunshine Hour.
11:30 a. m.—Noonday Musical.
4:00 p. m.—Classic Hour, ex. Wed. and Sat.
12:00 midnight—Midnight Heralds and music

SUNDAY, APRIL 8
10:30 a. m.—Sunday morning worship.
2:30 p. m.—Dispensational message.
6:00 p. m.—Silver Band concert.
7:00 p. m.—Musical hour.
8:00 p. m.—Revival service.
12:00 p. m.—Midnight Heralds.

MONDAY, APRIL 9
10:30 a. m.—Sunshine hour, Gertrude Byers

KTBI Los Angeles, Calif.—1090 Kc.

750 Watts—275.1 Meters—Bible Institute of Los Angeles
HARRY P. HERDMAN, Announcer, Phone ME. 6701
JOHN GLASSE, Director of Programs

DAILY EXCEPT SATURDAY AND SUNDAY
8:30 a. m.—Devotional hour.
10:45 a. m.—Student Chorus singing, (except Monday).

SUNDAY, APRIL 8

6:00 a. m.—Special Easter service; speaker, Rev. Albert E. Kelly, Bible Institute.
10:45 a. m.—Church of the Open Door.
3:00 p. m.—Jewish radio hour.
6:00 p. m.—Radio vesper service.
7:15 p. m.—Church of the Open Door.
9:15 p. m.—Old hymns by chorus choir.

MONDAY, APRIL 9

2:00 p. m.—Monday Club; Prof. Alva Mac-Clain.
4:00 p. m.—Bible Institute news hour.
7:00 p. m.—Specially selected hour.
8:00 p. m.—Easter cantata, "Glory of the Resurrection."
9:00 p. m.—Old hymns by KTBI mixed quartet.

TUESDAY, APRIL 10

2:00 p. m.—The "King's Business Question Box."
4:00 p. m.—Biographies of the great hymn writers.

WEDNESDAY, APRIL 11

2:00 p. m.—Inspirational hour. Music.
4:00 p. m.—"News of Christian Work in the World."

THURSDAY, APRIL 12

2:00 p. m.—"New Testament Word Studies."
4:00 p. m.—"Character Sketches of Missionary Heroes."

FRIDAY, APRIL 13

2:00 p. m.—"Great Preachers of the Past and Their Messages."
4:00 p. m.—An hour with prophecy.
7:00 p. m.—International Sunday School lesson.
8:00 p. m.—St. Luke's Gospel by Dr. G. Campbell Morgan.
9:15 p. m.—Old hymns by Girls' Octet.

SET MANUFACTURERS

GET OUR SPECIAL PRICES ON

Chokes
(40 Mil. Cap.)

30 Henrys
50 Henrys
65 Henrys

Transformers

For
A and B
Eliminators

Call VE. 1619

or write

POWELL MANUFACTURING CO.

4009 S. Western Avenue

LOS ANGELES



DICK SMITH

Studio Dir. and Announcer Art Gearhart, Studio Ace.

KFQZ Los Angeles, Calif.—1290 Kc.

232.4 METERS
1417 S. Figueroa St., Los Angeles, Calif. WEstmore 3001.

SUNDAY, APRIL 8

8:00 a. m.—Dan Parker courtesy program.
9:00 p. m.—April Fool Frolic.

MONDAY, APRIL 9

7:00 p. m.—After dinner concert
8:00 p. m.—Ernie Ownes Orchestra

TUESDAY, APRIL 10

7:00 p. m.—Wally Haines Orchestra.
8:00 p. m.—Lou Bickels Orchestra

WEDNESDAY, APRIL 11

7:00 p. m.—Musical comedy hour
8:00 p. m.—Glenn Edmond's Sunset Serenaders; Mary Stockberger.

THURSDAY, APRIL 12

7:00 p. m.—Thelma Potter; Howard Dodds, soprano.
8:00 p. m.—California Poppies, Helen Pacino

FRIDAY, APRIL 15

7:00 p. m.—Josephine Lackmar's artist hour
8:00 p. m.—Coppock Trio, Rae Silverman.

SATURDAY, APRIL 14

7:00 p. m.—Ballad hour.

DAILY EXCEPT SUNDAY

7:00 a. m.—Aero Ad Service; studio talent.
9:00 a. m.—The Bulldog and the Bullfrog.
10:00 a. m.—Panatrophe and Shopping News.
3:00 p. m.—KFQZ Orchestra, soloists.
5:00 p. m.—Dinner hour program, courtesy Barker Bros.
9:00 p. m.—J. V. Baldwin Orchestra
10:00 p. m.—Dance music.

Official MAGNAFORMER LABORATORY

The Magnaformer, the Set of Proven Performance, built as per Factory Specifications, Wired and Tested, \$150.

We will test, assemble and wire your kit for \$35.00.

Workmanship and Efficiency Guaranteed

LABORATORY OF RADIO STANDARDS

E. K. HAYES

2408 West Vernon

VERMONT 6543

Los Angeles, Calif.

Golden Bear AIR COLUMN SPEAKER

12 Sizes — WE. 2712
1929 Los Angeles St., L. A.

DE JARNATT RADIO GROUND

Will make a wonderful difference in your radio reception. This ground contains chemicals that turn into moisture, and this moisture is held close to the container by other chemicals. The De Jarnatt is the ONLY radio ground that absorbs and holds moisture. The container can be refilled, if necessary, through filler tube, simply by removing cork. Order from your dealer or direct from manufacturer.

PRICE \$7.00

B. J. DE JARNATT, 139 No. Alta St., Los Angeles. CApital 6131



TOM SEXTON

San Diego, California—680 Kc.

KFSD

500 WAITS—440.9 METERS
 Grant Hotel, 326 Broadway, San Diego
 Telephone Main 8661
 WM. H. BLACK, President
 TOM SEXTON, General Manager
 "A Kiss from San Diego"

DAILY EXCEPT SUNDAY—

10:00 to 11:00 a. m.—Amy Lou Shopping Hour.
 12:30 to 1:30 p. m.—Carr Bros. Plata Real Orchestra.
 5:45 to 6:00 p. m.—Late news items, sporting events by San Diego Union and Tribune.
 6:00 to 7:00 p. m.—Musical Review.

SUNDAY, APRIL 8

11:15 a. m. to 12:15 p. m.—Services 1st Unitarian Church.
 2:00 to 3:00 p. m. — Services International Bible Students.
 3:00 to 4:00 p. m. — Services Theosophical Society.
 8:15 to 10:00 p. m.—Concert program, featuring Hutton's Hotel Del Coronado Concert quartette and John Claire Monteith.

MONDAY, APRIL 9

7:00 to 8:00 p. m.—AH Star Five Orch.
 8:00 to 9:00 p. m.—Studio program.
 9:00 to 10:00 p. m.—San Diego Union and Evening Tribune musical program.

TUESDAY, APRIL 10

7:00 to 8:00 p. m.—Musical program.
 8:00 to 9:00 p. m.—Thearle's classical orthophonic.
 9:00 to 10:00 p. m.—Studio artists' hour.

WEDNESDAY, APRIL 11

7:00 to 7:30 p. m.—Theodore Warfield, Doris Ridgway.

7:30 to 8:30 p. m.—Concert program, Theosophical Society.
 8:30 to 9:00 p. m.—Orthophonic pipe organ.
 9:00 to 10:00 p. m.—Aeolian Quartette.
 10:00 to 11:00 p. m.—Ratliff Dance Acad.

THURSDAY, APRIL 12

7:00 to 8:00 p. m.—San Diego Police Dept. program.
 8:00 to 9:00 p. m.—Unitarian Church concert.
 9:00 to 10:00 p. m.—Ratliff Academy of Dancing.

FRIDAY, APRIL 13

7:00 to 8:00 p. m.—Fegan's San Diego Orch.
 8:00 to 8:30 p. m.—Minor Twins, Stubbs Brothers.
 8:30 to 10:00 p. m.—Hutton's Hotel Del Coronado Concert Quartette.

SATURDAY, APRIL 14

7:00 to 8:00 p. m.—San Diego H. S. prog.
 8:00 to 9:00 p. m.—Franco-American houb.
 9:00 to 10:00 p. m.—Studio program.
 10:00 to 11:00 p. m.—Ratliff Dance Acad.



"The Home of
 Jewell Instruments"



Emsee Radio Company

[WM. E. McCABE]

WHOLESALE



DISTRIBUTORS

1129 MAPLE AVENUE

REPLACEMENT
 EQUIPMENT
 AND
 PARTS

LOS ANGELES, CALIF.



For Service
 Phone WESTMORE 5907





JAMES FOUCH
Manager

KMIC Inglewood, Calif.—1340 Kc.

250 WATTS—224 METERS
Chamber of Commerce Bldg., Inglewood, Calif.
Newspaper of the Air

Owned and Operated by
James R. Fouch
O. B. Mills
Engineer
Phone Direct Wire
Thornwall 1121
Long Distance
Inglewood 1897
**NEWS
BULLETIN
HOURLY**

8:10 p. m.—KMIC Melody Five.
9:00 p. m.—Bob and Buster.

WEDNESDAY, APRIL 11

9:20 a. m.—Bob Wilson, songs and uke.
10:00 a. m.—The Minute Man.
2:00 p. m.—Ruth Ritter Howell, soprano.
3:00 p. m.—L. A. Police Quartet.
3:40 p. m.—Harry Vonzell, uke and songs.
4:00 p. m.—Uncle Marshall Steadman
5:00 p. m.—Organ recital.
7:00 p. m.—Rod Lorring, violinist
7:45 p. m.—John Mand.
8:00 p. m.—Professional try-out period.
9:00 p. m.—California Playboy Orchestra.

THURSDAY, APRIL 12

9:20 a. m.—Tillie the Toiler; songs, piano.
10:00 a. m.—Bob and Buster.
2:00 p. m.—Elizabeth Nason, soprano.
2:30 p. m.—Katheryn Michelson Woods.
3:00 p. m.—L. A. Firemen's Orchestra
4:00 p. m.—Dr. J. J. Tanner,
4:20 p. m.—The Country Jane, old songs.
5:00 p. m.—Earl Creedon, songs; Banjo boys
7:00 p. m.—Eddie Coates and his 4 Vests
8:00 p. m.—Vagabond Concert Trio.
9:00 p. m.—Frenchy Barquet Rhythm Pound-
ers; Katheryn Mooney, blues.

FRIDAY, APRIL 13

9:20 a. m.—Bob Wilson, uke and songs.
10:00 a. m.—The Minute Man.
2:00 p. m.—Country Jane, old songs.
3:00 p. m.—Detective Nick B. Harris
4:00 p. m.—Ka Mullani's Lady Orchestra.
5:00 p. m.—Organ request program.
7:00 p. m.—Geo. D. Fasset, guitar.
8:00 p. m.—KMIC Merry-makers
9:00 p. m.—Athenian Quartet, male voices.

SATURDAY, APRIL 14

9:20 a. m.—Tillie the Toiler, songs, piano.
10:00 a. m.—Bob and Buster.
2:00 p. m.—KMIC Vaudeville.
5:00 p. m.—Ruth Bemis and Ara May Walk-
er Harmony Singers.
6:45 p. m.—John Mand,
7:00 p. m.—Ruth Marshall Patterson
8:00 p. m.—KMIC Melody Five Dance Orch.
9:00 p. m.—Campbell Bros. and Roy Blaize,

DAILY EXCEPT SUNDAY
7:00 a. m.—Shopping list with records.
8:00 a. m.—KMIC Breakfast Club with New
Idea Man.
9:50 a. m.—Mrs. Eddie Barnes.
10:30 a. m.—Charles Beauchamp, tenor.
11:00 a. m.—Organ Recital, Sadie Parish,
12:00 noon—Classified ads records.
1:00 p. m.—Columbia records.
6:00 p. m.—KMIC Dinner Club.

SUNDAY, APRIL 8

8:15 a. m.—KMIC Breakfast Club.
10:00 a. m.—Rev. Henry C. Culberson.
7:00 p. m.—International Bible Students.

MONDAY, APRIL 9

9:20 a. m.—Elsie Steadman, popular songs.
10:00 a. m.—The Minute Man.
12:00 noon—Columbia records.
2:00 p. m.—Rod Lorring, violinist
3:00 p. m.—The Smile Club
4:00 p. m.—The Country Jane, old songs.
5:00 p. m.—Organ recital.
7:00 p. m.—Louise Moody Concert Trio.
8:00 p. m.—Saxophone Elimination Contest.
9:00 p. m.—B Natural Syncopators

TUESDAY, APRIL 10

9:20 a. m.—Tillie the Toiler, vocalist.
10:00 a. m.—Bob and Buster,
2:00 p. m.—Elaine Lancaster, blues.
3:05 p. m.—L. A. Sheriff's program.
4:05 p. m.—Ka Mullani Orchestra.
5:00 p. m.—Three Harmony Boys Vocal Trio
7:00 p. m.—Geo. D. Fasset Hawaiian Trio;
8:00 p. m.—The Minute Man.



HARRY A. JAMES
Announcer

KELW Burbank, Calif.—1310 Kc.

MAGNOLIA PARK, 500 WATTS—228.9 METERS
"The White Spot of the San Fernando Valley"

Phone Burbank 1192
Earl L. White, Owner
Harry A. James
Program Manager
William Gould
Business Manager
Melvin Hunt
Assistant Announcer
Stuart F. Wainwright
Technical Engineer

ning, pianist.
8:00 p. m.—California String Quartet and
soloist.

9:00 p. m.—Lee Brann's New Society Orch.
WEDNESDAY, APRIL 11

5:00 p. m.—Jack Rogers feature hour.
7:00 p. m.—Feature program.
8:00 p. m.—Peggy and Edna, Novelty Trio;
9:00 p. m.—Feature hour.

THURSDAY, APRIL 12

7:00 p. m.—Valry Sisters; Mel Hunt, songs.
8:00 p. m.—Mission Play singers and pianist
9:00 p. m.—Mission Play Trio

FRIDAY, APRIL 13

5:00 p. m.—Jack Rogers feature hour.
7:00 p. m.—Burbank Tribune program,
8:00 p. m.—Neapolitan Girls; Otto Floetz.
9:00 p. m.—San Fernando Elks' Orchestra.

SATURDAY, APRIL 14

7:00 p. m.—Myra Belle Vickers Trio; Albert
Bryant, tenor; KELW Mixed Quartet.
8:00 p. m.—Beatrice and Howard Cavanah.
9:00 p. m.—California String Quartet.

DAILY EXCEPT SUNDAY
10:00 a. m.—Audrey Evans and Jack Brooks.
11:00 a. m.—World News and Panatrophe.
6:00 p. m.—California String Quartet.
MONDAY, APRIL 9
7:00 p. m.—Kenney and Ray, vocal duets.
8:00 p. m.—Hubbel Bros Trio.
9:00 p. m.—Magnolia Park Trio and soloist.
TUESDAY, APRIL 10
5:00 p. m.—Jack Rogers hour.
7:00 p. m.—Walter Butterly; Herbert Hen-

1928 Music, Sports and Politics



RCA RADIOLA 17
Less accessories . \$130.00
With Radiotrons . \$157.50



RCA
LOUDSPEAKER 100-A
\$35

Will be brought faithfully to your fireside by the Radiola 17, aided by RCA Loudspeaker 100-A. You will sit in great football stadiums, theatres and convention auditoriums, besides enjoying the wonderful programs now being planned in the leading broadcast studios. Radiola 17 operates directly from the light socket. Convince yourself of its rich tone quality by asking one of the Authorized RCA Dealers listed below to demonstrate it in your own home:

LOS ANGELES

Downtown

Eastman Kodak Stores,
Inc.

510 S. Broadway
TRinity 0746

The Electrical Appliance
Shop

336 S. Broadway
TUcker 2932

Martin Music Co.

734 S. Hill St.
TRinity 9621

Richardson's

730 West Seventh St.
TRinity 2303

Echo Park

Mohawk Radio & Music
Company

2115-17 Sunset Blvd.
DRexel 1112

Hollenbeck Heights

Worobieff Music Shop
2038 East First St.
ANGelus 6349

Highland Park

F. & H. Radio Shop

5011 York Blvd.
GARfield 8962

Holland Electric Shop

5632 Pasadena Ave.
GARfield 3912

Hollywood

Hollywood Music Co.

6019 Hollywood Blvd.
HOLlywood 0364

South

De Hoog Brothers

6120 S. Broadway
THornwall 0224

Southeast

Central Electric Co.

3802 Central Ave.
HUMbolt 2337

Southwest

C. & G. Electric &
Radio Company

1501 W. Santa Barbara
VERmont 5205

L. A. Duncan

2891 W. Pico St.
EMpire 1141

Osmond Radio Co.

3206 W. Washington
EMpire 2966

West Adams District

H. H. Walker

1323 Venice Blvd.
BEacon 1311

ALHAMBRA

Fred B. Gillenwater

Radio Studio
127 W. Main St.
Alhambra 2032

PASADENA

Lee Radio Shop

922 E. Colorado St.
Wakefield 5951

Consult These Men, Too, for Expert Service on All Radiola Models

RCA Radiola

MADE BY THE MAKERS OF THE RADIOTRON



"HAL" G. NICHOLS
Manager

KFON

Long Beach, Cal.—1240 Kc.

"These Your Ship Comes in"
1000 WATTS—242 METERS—PIGGY WIGGLY STATION
Owned and Operated by NICHOLS & WARINNER, Inc.
Studio: 211 Jergins Trust Bldg. 617-19, 614-60
Office: 212 Jergins Trust Bldg. 617-19, 614-60

DAILY EXCEPT SUNDAY

- 8:30 a. m.—"Bright" and "Early" Hour.
9:00 a. m.—Benjamin Irving, Jeweler, except Tues., Thurs., Sat.).
9:00 a. m.—Barkers' Women's Shop, except Mon., Wed., Sat.).
9:30 a. m.—Organ Recital—Kilpatrick's Bakery.
10:00 a. m.—"Shopping News"—Hugh A. Marti Co.
10:15 a. m.—"Devotional Period," except Saturday.
10:30 a. m.—Physiology of Beauty—Georgia O. George, ex. Saturday.
11:30 a. m.—Press-Telegram Early News—Frank Goss.
12:00 noon—Lost and Found Announcements.
12:05 p. m.—Popular Jazz Band (ex. Tues., Thurs., Sat.).
12:30 p. m.—"Doris and Clarence."
1:30 p. m.—"The Radio Girl," Gladys Thom- as (except Sat.).
2:00 p. m.—Manuel Contreras, cornetist; Hal G. Nichols, violinist; Doris Dolan, pianist.
4:00 p. m.—Press-Telegram late news, Frank Goss.
4:30 p. m.—Piggly Wiggly Concert Orches- tra and Entertainers.
6:45 p. m.—Adult Radio School, Elmer C. Jones (except Tuesday, Saturday).

DAILY EXCEPT MONDAY

- 2:30 p. m.—Long Beach Municipal Band.
3:10 p. m.—Piggly Wiggly Menu Girl (ex- cept Sunday).
3:20 p. m.—Long Beach Municipal Band.
8:00 p. m.—Press-Telegram presenting L. B. Municipal Band.
12:00 p. m.—Midnight dance program.

SUNDAY, APRIL 8

- 9:30 a. m.—Capitol Theatre organ.
10:00 a. m.—Angeles Abbey program.
11:00 a. m.—Church services.
12:30 p. m.—Birkel Music Co.
1:30 p. m.—Pacific Coast Club organ.
4:00 p. m.—Late popular record releases.
5:30 p. m.—"The Haymakers."
6:00 p. m.—Pacific Coast Club Orchestra.
7:00 p. m.—Barkey's Ladies' Mandolin Or.
7:45 p. m.—First Church of Christ, Scientist.
9:00 p. m.—Piggly Wiggly All Star Night.

MONDAY, APRIL 9

- 1:00 p. m.—Spanish program.
2:30 p. m.—Happy Jack's Hawaiian prog.
7:00 p. m.—Suydam's Buttercream School
8:00 p. m.—Bennie Light, jazz pianist; Mark cook, tenor.
9:00 p. m.—Kiwanis Frolic.

TUESDAY, APRIL 10

- 12:00 noon—Happy Jack's Hawaiian prog.

- 1:00 p. m.—Kiwanis Club Luncheon.
6:45 p. m.—Talk on Health.
7:00 p. m.—Tyrolean Zither Orchestra and Entertainers.
9:00 p. m.—"Tone Poems."
10:00 p. m.—Majestic Ballroom Orchestra.
11:00 p. m.—Pacific Coast Club Organ.

WEDNESDAY, APRIL 11

- 1:00 p. m.—Rotary Club Luncheon.
7:00 p. m.—"Fain's Pair of Kids."
7:30 p. m.—Georgia O. George.
9:00 p. m.—Pacific Coast Club Orchestra.
9:30 p. m.—Main Event, Wilmington Bowl.
11:00 p. m.—Pacific Coast Club Orchestra.

THURSDAY, APRIL 12

- 12:00 noon—Happy Jack's Hawaiian prog.
1:00 p. m.—Spanish program.
2:00 p. m.—Health and Efficiency, Dr. Clark.
7:00 p. m.—Cloverleaf Orchestra.
7:30 p. m.—Angeles Abby program.
9:00 p. m.—Hi Jinks Musical Comedy, Capti- tol Theatre.
10:00 p. m.—Masterpiece program.
11:00 p. m.—Pacific Coast Club Organ.

FRIDAY, APRIL 13

- 1:00 p. m.—Masonic Club Luncheon.
7:00 p. m.—Irene Martin, Lucky Wilber, Jack Nash and entertainers.
9:00 p. m.—"Ye Olde Song Album."
10:00 p. m.—Capitol Theatre Organ.
11:00 p. m.—West Coast Theatres Frolic.

SATURDAY, APRIL 14

- 10:30 a. m.—Capitol Theatre Organ.
12:00 noon—Vernon Dalhart Program.
1:00 p. m.—Popular musical program.
1:30 p. m.—Imperial Trio.
4:30 p. m.—Majestic Ballroom Orchestra.
7:00 p. m.—Piggly Wiggly Snappy Hour.
9:00 p. m.—Pacific Coast Club Orchestra.
10:00 p. m.—Masterpiece program.
11:00 p. m.—Majestic Ballroom Orchestra.

Standard Radio Co.

Telephone: WESTMORE 1560

417 West Pico Street

11 years in the Radio business in Los Angeles. Call on us or phone for free advice in regard to modernizing your Radio set.

Authorized Sales and Service

ATWATER KENT CROSLY SPARTON

PEERLESS, ROLA AND WESTERN ELECTRIC SPEAKERS



CURTIS PECK
Announcer

KPO San Francisco, Calif. — 710 Kc.

1000 WATTS—422.3 METERS
HALE BROTHERS AND THE CHRONICLE
"The Voice of San Francisco"

Phone Kearney 5777

J. W. Laughlin
Managing Director

Mrs. Frederik Crowe
Program Director

Albert J. Hodges
Technical Director

DAILY EXCEPT SUNDAY

- 6:45 a. m.—Health and Happiness Period.
- 8:00 a. m.—The Shell Happy Time.
- 10:30 a. m.—Ye Town Crier (except Tues.).
- 11:30 a. m.—Kane's Hawaiians (except Tues. and Fri.).
- 12:00 noon—Time Signals.
- 1:00 p. m.—Instrumental Trio (except Fri.).
- 1:15 p. m.—Stock and Fruit Reports (except Mon. and Fri.).
- 2:45 p. m.—Play by play broadcast of Pacific Coast Baseball Games (except Mon.).
- 4:30 p. m.—Ye Town Crier Service.
- 5:00 p. m.—Children's Hour.
- 6:00 p. m.—Reo-Logue, with music for Reo Motor Car Co.
- 6:30 p. m.—Musical program (except Mon., Wed., Thurs., Sat.).
- 7:30 p. m.—DX period (except Mon., Sat.).
- 10:00 p. m.—KPO Dance Orch., ex. Mon., Sat.

SUNDAY, APRIL 8

- 9:45 a. m.—Church services.
- 1:00 p. m.—N. B. C.*
- 2:45 p. m.—Play by play broadcast of Pacific Coast League baseball games for the Associated Oil Co.
- 6:30 p. m.—N. B. C.*
- 7:30 p. m.—Recital by Uda Waldrop, organ.
- 8:30 p. m.—Rudy Seiger and the Fairmont Hotel Concert Orchestra.
- 9:00 p. m.—N. B. C.*

MONDAY, APRIL 9

- 10:15 a. m.—Art talk by Ellen G. Barker.
- 11:00 a. m.—Gypsy and Marta.
- 1:00 p. m.—E. A. Pierce & Co. market quotations.
- 7:00 p. m.—Recital by Nathan Abas, violin.
- 7:20 p. m.—Book review by Harold Small.
- 8:00 p. m.—N. B. C.*
- 10:00 p. m.—KPO's variety program, featuring KPO artists.

*See Page 42 for detailed program of National Broadcasting Co.

- TUESDAY, APRIL 10**
- 10:00 a. m.—Activity conducted by Ann Warner, domestic economist.
 - 10:25 a. m.—Ye Towne Cryer service.
 - 10:30 a. m.—N. B. C.*
 - 11:15 a. m.—Gypsy and Marta.
 - 11:45 a. m.—Program by Kane's Hawaiians.
 - 6:30 p. m.—KPO Dinner Orchestra.
 - 8:00 p. m.—N. B. C.*
 - 9:00 p. m.—Kolster hour, broadcast simultaneously by KPO and KFI.

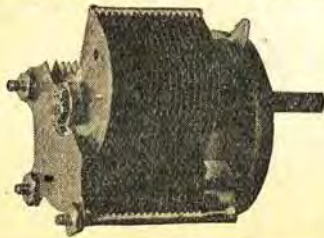
- WEDNESDAY, APRIL 11**
- 10:45 a. m.—Gold Medal Home Service talk.
 - 11:00 a. m.—Gypsy and Marta, for Charles Arnao Company.
 - 12:45 p. m.—Talk by Theodore Roosevelt Jr. from Commonwealth Club.
 - 6:30 p. m.—N. B. C.*
 - 7:00 p. m.—KPO Instrumental Trio.
 - 8:00 p. m.—N. B. C.*
 - 9:00 p. m.—Morris Plan hour.
 - 10:00 p. m.—KPO Dance Orchestra.

- THURSDAY, APRIL 12**
- 10:00 a. m.—Ann Warner, domestic economist.
 - 11:00 a. m.—Gypsy and Marta, for Charles Arnao Company.
 - 7:00 p. m.—Poultry talk.
 - 7:15 p. m.—Sports on the Air by Harry Smith of The Chronicle.
 - 8:00 p. m.—Caswell hour.
 - 9:00 p. m.—N. B. C.*
 - 10:00 p. m.—KPO Dance Orchestra.

- FRIDAY, APRIL 13**
- 10:45 a. m.—Gold Medal Home Service talk.
 - 11:00 a. m.—Gypsy and Marta, with music by the Reo Wolverines.
 - 11:30 a. m.—Kane's Hawaiians.
 - 12:45 p. m.—Commonwealth Club luncheon at Palace Hotel.
 - 1:30 p. m.—KPO Instrumental Trio.
 - 6:30 p. m.—KPO Dinner Orchestra.
 - 8:00 p. m.—N. B. C.*
 - 9:30 p. m.—Abas String Quartet, with Allan Wilson, tenor, as guest artist.
 - 10:30 p. m.—KPO Dance Orchestra, with Jerry Jermaine.

- SATURDAY, APRIL 14**
- 10:00 a. m.—Ann Warner, domestic economist.
 - 11:00 a. m.—Gypsy and Marta, for Charles Arnao Company.
 - 7:00 p. m.—KPO dinner dance hour.
 - 8:00 p. m.—N. B. C.*

ARMO S. L. F. CONDENSER



Adjustable to—
MAXIMUM
MINIMUM
MIDDLE

\$2.00

.0005 — .00035 — .00025

Used Exclusively by Leading Set Manufacturers.

ARMO RADIO LABORATORIES
1666 Tarleton St. WE. 9610 Los Angeles

AEROPLANE LOUDSPEAKER KITS

The Essentials

BREILLE Motor Units

AERO CLOTH

DRUMTITE CONVERTER

IN STOCK

**RADIO MANUFACTURERS
SUPPLY CO.**

1000 SOUTH BROADWAY COR 10TH ST.
OPEN EVENINGS UNTIL 9PM. SATURDAY UNTIL 10PM.



HOWARD MILHOLLAND
Announcer

KGO Oakland, California—780 Kc.

5000 WATTS—384 METERS
PACIFIC COAST STATION, GENERAL ELECTRIC CO.
Phone Fruitvale 5980

DAILY EXCEPT SUNDAY—

- 11:30 a. m. to 1:00 p. m.—Luncheon concert.
- 12:30 and 1:00 p. m.—Stock and weather reports.
- 6:00 p. m.—San Francisco and New York Stocks (ex. Saturday).
- 6:20 p. m.—News (except Monday and Saturday).
- 7:00 p. m.—Weather Reports (except Saturday).
- 9:00 p. m.—Time Signals

WEDNESDAY, APRIL 11

- 11:15 a. m.—Freda Bayley, "The Home."
- 6:30 p. m.—N. B. C.*
- 7:00 p. m.—Agricultural program.
- 8:00 p. m.—N. B. C.*
- 9:00 p. m.—Western Artist series.
- 10:00 p. m.—Hotel St. Francis dance orchestra.

THURSDAY, APRIL 12

- 6:30 p. m.—Dinner concert.
- 8:00 p. m.—Rickety-Rackety Radio Minstrels.
- 9:00 p. m.—N. B. C.*
- 10:00 p. m.—Hotel St. Francis dance orchestra.

FRIDAY, APRIL 13

- 11:10 a. m.—"Home Economics."
- 5:30 p. m.—Da-Ra-O.
- 6:25 p. m.—"Weekly Financial Review."
- 6:30 p. m.—Parisian Quintette.
- 8:00 p. m.—N. B. C.*
- 10:00 p. m.—Hotel Oakland dance orchestra.

SATURDAY, APRIL 14

- 6:00 p. m.—"The Home Songsters."
- 6:30 p. m.—News, weather and baseball.
- 6:40 p. m.—Richards Hawaiians.
- 7:00 p. m.—"A Chat About New Books."
- 7:15 p. m.—Weekly sport review.
- 8:00 p. m.—N. B. C.*
- 11:00 p. m.—Hotel St. Francis dance orch.

- SUNDAY, APRIL 8**
- 11:00 a. m.—First Methodist Episcopal Church.
 - 1:00 p. m.—N. B. C.*
 - 4:00 p. m.—Vesper service.
 - 6:30 p. m.—N. B. C.*
 - 7:35 p. m.—First Methodist Episcopal Church.

MONDAY, APRIL 9

- 3:30 p. m.—Cal. Fed. of Women's Clubs.
- 4:00 p. m.—Hotel St. Francis dance orchestra.
- 5:30 p. m.—Aunt Betty (Ruth Thompson) stories; KGO Kiddies Klub.
- 6:35 p. m.—General Electric Departmental program.
- 8:00 p. m.—N. B. C.*
- 10:00 p. m.—N. B. C.*

TUESDAY, APRIL 10

- 10:30 a. m.—N. B. C.*
- 11:15 a. m.—"Everyday Living."
- 6:30 p. m.—N. B. C.*
- 7:00 p. m.—Dinner concert.
- 8:00 p. m.—N. B. C.*
- 9:00 p. m.—"The Pilgrims."



RUSSELL SHERWOOD
Program Director

KYA San Francisco, Calif.—830 Kc.

"At the Golden Gate"
1000 WATTS—361.2 METERS
Headquarters at the Cliff Hotel
CLAIR MORRISON, Manager RUSSELL SHERWOOD, Prog. Dir.

DAILY EXCEPT SUNDAY

- 8:00 a. m.—"The KYA Morning Glories," with music and songs.
- 9:00 a. m.—Sally Cooke, the "Better Homes Girl of KYA."
- 11:00 a. m.—California Sunshine Hour.
- 12:00 noon—News Items direct from the Editorial Rooms of the Examiner, except Thursday.
- 5:30 p. m.—The Golden Gate Cryer, with Carol Soper's Dance Orch.
- 6:00 p. m.—News from the Examiner.
- 6:15 p. m.—The Golden Gate Cryer.

- SUNDAY, APRIL 8**
- 10:00 a. m.—Easter Breakfast from the Elks Club.
 - 11:00 a. m.—Central Methodist Church.
 - 6:00 p. m.—Dr. Frederick W. Clampett.
 - 7:30 p. m.—Central Methodist Church.

MONDAY, APRIL 9

- 10:00 a. m.—Georgia O. George.
- 7:00 p. m.—Charles W. Hamp.
- 8:30 p. m.—West Coast Theatres.
- 10:00 p. m.—The Club Carlton Orchestra.
- 11:00 p. m.—The Rambler Orchestra.

TUESDAY, APRIL 10

- 10:00 a. m.—Studio program.
- 10:30 a. m.—Dr. Buren L. Corley.
- 12:15 p. m.—The Tuesday Noon Club.
- 2:00 p. m.—Babette, Fashion Authority.
- 6:40 p. m.—Miles Overholdt, humorist.
- 7:00 p. m.—New Song Period.
- 8:00 p. m.—"California Sunshine Boys."
- 8:30 p. m.—West Coast Theatres.
- 10:00 p. m.—Cafe Apollo Dance Orchestra.

WEDNESDAY, APRIL 11

- 10:30 a. m.—Georgia O. George.
- 11:40 a. m.—Dr. Julian R. Brandon.
- 6:40 p. m.—Thomas Nunan, radio editor.

- 7:00 p. m.—San Francisco Women's Clubs.
- 9:00 p. m.—Art Ellis' Orchestra.
- 10:00 p. m.—The Tune Peddler's Orchestra.
- 11:00 p. m.—The Troubadour's Dance Orch.

THURSDAY, APRIL 12

- 10:00 a. m.—Studio program.
- 10:45 a. m.—Prudence Penny.
- 11:40 a. m.—Dr. Julian R. Brandon.
- 6:30 p. m.—"Week-ending with Billy and Jim."

- 7:00 p. m.—Charles W. Hamp.
- 10:00 p. m.—Carnival Night at Cafe Apollo.

FRIDAY, APRIL 13

- 10:00 a. m.—Studio program.
- 10:30 a. m.—Diet and Health Talks.
- 7:00 p. m.—Dr. Albertine Nash.
- 8:00 p. m.—Specialty program.
- 9:00 p. m.—The Metro Trio.
- 10:00 p. m.—Cafe Apollo Dance Music.

SATURDAY, APRIL 14

- 10:00 a. m.—Studio program.
- 10:30 a. m.—Diet and Health Talks.
- 7:00 p. m.—"Examiner Sports Period."
- 8:00 p. m.—"Old Timers" Hour.
- 9:00 p. m.—Casual Hour.
- 10:00 p. m.—"The Radio Bugs' Frolic."



KFRC San Francisco, Calif.—660 Kc.

Owned and Operated by Don Lee, Cal. Dist. for Cadillac & LaSalle
1000 WATTS—454.3 METERS

"Keep Forever Radiating Cheer"

Harrison Holliday
Manager

Frank Moss
Musical Director

- 6:30 p. m.—Sports talk by "Bobs."
7:00 p. m.—Charles Hamp entertains.
8:00 p. m.—Haas Candy Stores "Sweetheart Hour."
9:00 p. m.—Marvelous Marin.
10:00 p. m.—Mark Hopkins' Dance Orchestra.

WEDNESDAY, APRIL 11

- "MAC"
DAILY EXCEPT SUNDAY
7:00 a. m.—Seal Rock program by Simpy Fitts.
8:00 a. m.—Studio program.
9:00 a. m.—Georgia O. George (except Sat.).
10:00 a. m.—Doings of Dorothy (ex. Thursday, Friday and Saturday).
11:30 a. m.—Amateur Tryouts (except Sat.).
12:00 noon—Sherman Clay Concert.
1:00 p. m.—Stock quotations.
4:00 p. m.—Educational Talk (except Fri.).
4:30 p. m.—Organ Recital by Theo Strong, except Saturday.
5:15 p. m.—San Francisco Call News Items.
5:30 p. m.—Mac and his Gang.
6:20 p. m.—Stage, Screen, Police and Lost and Found (except Tues. and Thurs.).
6:30 p. m.—The Cecilians (ex. Tues. and Fri.).
11:00 p. m.—Dance Orchestra.

SUNDAY, APRIL 8

- 10:00 a. m.—Home Sweet Home concert.
12:00 noon—Old St. Mary's Church.
1:15 p. m.—S. & W. recital.
3:15 p. m.—Mac and his gang
4:15 p. m.—Art Fadden at the Steinway.
5:00 p. m.—Organ recital and soloists.
6:00 p. m.—Inspirational talk.
6:30 p. m.—Hotel Mark Hopkins Concert
7:30 p. m.—Williams Oil-o-matic Concert
8:30 p. m.—Tom Gerunovich's Roof Orch.
9:30 p. m.—Song recital by Robert Olsen.
10:00 p. m.—KFRC Dance Orchestra.

MONDAY, APRIL 9

- 9:30 a. m.—Shopping service.
11:00 a. m.—Household hints
1:05 p. m.—"Mothercraft Club."
3:00 p. m.—KFRC Concert Orchestra.
7:00 p. m.—Cecilians, courtesy Easy Washer Company.
8:00 p. m.—Blue Monday Jamboree.
10:00 p. m.—Hotel Mark Hopkins' Orchestra.

TUESDAY, APRIL 10

- 11:00 a. m.—Studio program.
3:00 p. m.—KFRC Concert Orchestra.
6:25 p. m.—Stage and Screen and U. S. Weather Bureau Reports, Stock Quotations.

THURSDAY, APRIL 12

- 9:00 a. m.—Georgia O. George.
10:00 a. m.—Shopping Service.
11:00 a. m.—Charles Hamp
1:00 p. m.—"Mothercraft Club," directed by Mrs. Benjamin Schuyler.
6:20 p. m.—Beauty talk by Madame Marie.
6:30 p. m.—Stage and Screen and U. S. Weather Bureau Reports, Stock Quotations.
7:00 p. m.—Concert Orchestra.
8:00 p. m.—MonaMotor Oil Company program.
9:00 p. m.—Request program for "Tea-Time Three."
9:30 p. m.—Lucky Wedding Ring program.

FRIDAY, APRIL 13

- 10:00 a. m.—Shopping Service.
11:00 a. m.—Hints to Home-makers
1:00 p. m.—KFRC Concert Orchestra.
1:30 p. m.—Weinstock-Lubin & Co. Shopping Service.
2:00 p. m.—Garden talk by F. S. Davis.
6:30 p. m.—Sports talk by "Bobs."
7:00 p. m.—Charles Hamp.
8:00 p. m.—Piggly Wiggly program.
1:00 p. m.—Weinstock-Lubin & Concert
10:00 p. m.—Mark Hopkins' Dance Orchestra.

SATURDAY, APRIL 14

- 10:00 a. m.—Studio program.
11:00 a. m.—Amateur Auditions.
11:45 a. m.—Announcements of Sunday Church Sermon.
12:00 noon—Organ program by Leigh Harline, organist, and Wint Cotton, tenor
1:00 p. m.—Walter Krausgrill's Dance Orch.
2:00 p. m.—KFRC Concert Orchestra.
4:30 p. m.—Mark Hopkins' Orchestra.
5:30 p. m.—Mac and his Gang.
7:00 p. m.—The Cecilians.
8:00 p. m.—Studio program.

SARGENT-RAYMENT



STATION ISOLATORS

ELIMINATE INTERFERENCE!

Buy them in Los Angeles at

ELECTRIC-LIGHTING SUPPLY CO.

MUtual 2335

216 West 3rd Street

Los Angeles

Do You Like a Sermon with Your Baseball Game?

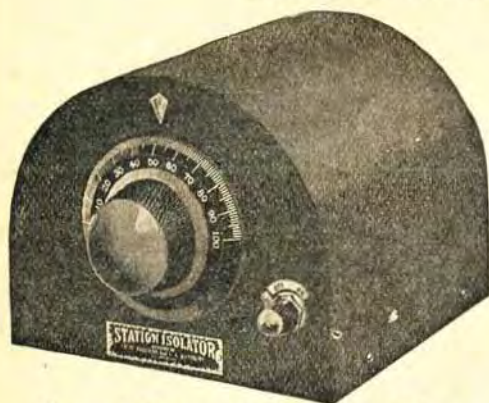
Or a Soprano Solo With Your Dance Music?

No matter what set you have, if a Station Isolator can be used with it you can prevent all overlapping of local stations. You can be assured of getting the program you want, clear, clean cut, with improved tone, and without interference. Radio sets four and five years old have been modernized with Station Isolators and are now giving good service.

We especially recommend Model "A" Station Isolator with the Atwater Kents named below and with the Crosley Band Box.

The Station Isolator increases the power and sensitivity of your receiver, and thus increases the distance range as well as giving better reception on coast stations. It is an accessory that, once tried, you would not be without.

Sold by Dealers Everywhere



Sargent-Rayment Station Isolator

Buy it on a five-day, money-back trial

Notice These Exclusive Features:

No need to break into wiring of your set. Station Isolator attaches externally.

Can be installed by a novice in five minutes.

On-Off Switch for Convenience. You can use your set either with or without the Station Isolator.

Designed by the inventors of the Infradyne.

Try One Yourself and Be Convinced!

You cannot really appreciate what the Station Isolator will do for you until you actually try one. Visit your dealer today and get the model needed for your set. You can install it yourself, demonstrate it to yourself by means of the On-Off Switch, and see what a difference it makes in your reception.

PRICES:

Use Model "A," Price \$10.00, for Radiola 16 and 17, Apex, Atwater Kent No. 30, 32, 35, 37, Stewart-Warner Simple Dial, Crosley Bandbox, Freshman Equaphase. (Note—Radiola 17 requires line filter also, \$7.00 extra.)

For all other sets that use an antenna and 6 volt "A" supply, use Model "T." Price \$12.50 (requires one CX-301-A tube, \$1.50 extra).

If your dealer cannot supply you, pin your check to this ad and mail it to us. We will send you one by return mail.

Radio Constructors Corporation, 357 12th St., Oakland, Cal.



STEPHEN L. GAYLORD

KGW Portland, Oregon—610 Kc.

1000 WATTS—49.5 METERS
THE MORNING OREGONIAN
"Keep Growing Wiser"

DAILY EXCEPT SUNDAY

10:00 a. m.—Town Crier, weather reports, news items.
6:00 p. m.—Dinner Concert, except Monday and Friday.
9:00 p. m.—Longline Watch Time Signals.

8:00 p. m.—N. B. C.*
9:00 p. m.—Maxwell House Coffee Orchestra.
10:00 p. m.—N. B. C.*

WEDNESDAY, APRIL 11

7:15 a. m.—Y. M. C. A. Health Exercises.
9:45 a. m.—Setting-up Exercises.
6:30 p. m.—N. B. C.*
7:00 p. m.—Concert.
7:30 p. m.—Albers Bros. Poultry Talk.
7:45 p. m.—Book Chat, J. K. Gill Co.
8:00 p. m.—N. B. C.*
11:00 p. m.—George Shelton's Olympic Hotel Orchestra.

THURSDAY, APRIL 12

6:30 p. m.—"Golden West Girl."
7:30 p. m.—Concert.
8:00 p. m.—N. B. C.*
9:30 p. m.—Dodge Bros. program.
10:00 p. m.—N. B. C.*

FRIDAY, APRIL 13

7:15 a. m.—Y. M. C. A. Health Exercises.
9:45 p. m.—Setting-up Exercises.
7:00 p. m.—Concert orchestra and soloist.
8:00 p. m.—N. B. C.*
10:30 p. m.—Frolic of the Keep Growing Wiser Order of Hoot Owls.

SATURDAY, APRIL 14

7:00 p. m.—Concert.
8:00 p. m.—N. B. C.*
*See Page 42 for detailed program of National Broadcasting Co.

SUNDAY, APRIL 9

8:00 a. m.—Auntie Blossom; songs by Winnie Winkle.
11:00 a. m.—Sunnyside Congregational Church
3:00 p. m.—N. B. C.*
6:30 p. m.—N. B. C.*
7:30 p. m.—The two Steinway artists.
8:00 p. m.—Wm. A. Grout Chevrolet concert.
9:00 p. m.—Time Signals from N. B. C.
9:30 p. m.—N. B. C.*
9:30 p. m.—The Oregonians.
10:00 p. m.—Little Symphony Concert Orch.
MONDAY, APRIL 9
7:15 a. m.—Y. M. C. A. Health Exercises.
7:00 p. m.—"The Oregonians."
7:30 p. m.—"Better Flowers" talk.
7:45 p. m.—"Travel Talk."
8:00 p. m.—N. B. C.*

TUESDAY, APRIL 10

11:00 a. m.—N. B. C.*
11:15 a. m.—Town Crier.
6:30 p. m.—Checker Cab Co. program.
7:00 p. m.—"Sealy Sam program."
7:30 p. m.—Crescent Coffee program."

KLEER-TONE!!

The Ideal Station Separator



\$4.00

EASY To Install To Operate

Sharpens selectivity to finest degree.
Increases volume.
Filters practically 50 to 90% of static.
Saves power.
Increases life of batteries.
Works on any type of set.
Brings in more distant stations.
Kills interference.

Install a KLEER-TONE and enjoy the *best* in radio entertainment.

[Remit NOW, to avoid delay. Money refunded]
after 10 days' trial, if you are not satisfied.]

Sent Postpaid by

KLEER-TONE DISTRIBUTING CO.

207 Ferguson Bldg.

LOS ANGELES



Mrs. J. Webster Hoover
Program Director

KJR Seattle, Washington—860 Kc.

604 Home Savings Building, 1520 Westlake Ave.
2500 WATTS—348.6 METERS. Phone Main 2475
F. C. Dahlquist, President. Mrs. J. Webster Hoover, Pro. Director
DAILY EXCEPT SUNDAY

- 9:00 a. m.—Mary Cooke, KJR Better Homes Girl, and Time Signals.
- 9:45 a. m.—Devotional Service.
- 10:00 a. m.—Shopping Service and Musical Program.
- 12:00 noon, 6:00 p. m. and 10:00 p. m.—Pacific Standard Time.
- 5:00 p. m.—KJR Junior Hours.
- 5:30 p. m.—Studio program.
- 5:45 p. m.—New York Closing Stock Quotations.
- 6:00 p. m.—Sports, News Items, Theater.
- 6:30 p. m.—Vic Meyer's Dinner Hour Concert (except Monday).
- 10:00 p. m.—Vic Meyer's Dance Orchestra.
- 12:00 noon—Varied studio program.

SUNDAY, APRIL 8

- 9:50 a. m.—International Bible Students.
- 11:00 a. m.—First M. E. Church.
- 12:30 p. m.—Studio program.
- 4:00 p. m.—First M. E. Church Choir.
- 5:00 p. m.—Studio program.
- 6:10 p. m.—International Bible Students.
- 7:15 p. m.—Organ recital by Arthur Biggs.
- 9:00 p. m.—Home Savings Building Trio.

MONDAY, APRIL 9

- 7:30 p. m.—Mrs. S. P. Totten, pianist.
- 8:00 p. m.—E. W. Eggen, violinist.
- 8:30 p. m.—Male Quartet.
- 9:30 p. m.—Seymore Wood, baritone.

TUESDAY, APRIL 10

- 12:30 p. m.—Ad Club Luncheon program.
- 4:45 p. m.—KJR Improvement Club.
- 7:30 p. m.—J. Leslie Pitcher, tenor.
- 8:00 p. m.—Lundquist-Lilly Two-Pant Twins.
- 9:00 p. m.—Dick Carrington's Orchestra

WEDNESDAY, APRIL 11

- 7:30 p. m.—Charles V. Schultz, blues.
- 8:00 p. m.—Bertha Luddington.
- 8:30 p. m.—Studio program.

THURSDAY, APRIL 12

- 12:30 p. m.—Young Men's Business Club
- 1:30 p. m.—Varied studio program.
- 7:30 p. m.—Sears, Roebuck & Co.
- 8:30 p. m.—"ABC" Chain broadcast.
- 10:00 p. m.—Vic Meyers Dance Orchestra.

FRIDAY, APRIL 13

- 4:45 p. m.—KJR Improvement Club.
- 7:30 p. m.—Old Time Dance Orchestra.
- 8:00 p. m.—Albers Bros, educational prog.
- 8:15 p. m.—Simultaneous broadcast prog.
- 9:00 p. m.—Mary and Margaret McArthur, mandolin and piano duo.
- 9:30 p. m.—Studio program.

SATURDAY, APRIL 14

- 7:30 p. m.—Studio program.



BYRON GILKINSON
Manager of KEX

KEX Portland, Oregon—1080 Kc.

2500 WATTS—277.6 METERS
Owned and Operated by the Western Broadcasting Co.,
Terminal Sales Building

F. C. Dahlquist
President

John H. Barnet
Program Director

MONDAY, APRIL 9

- 3:30 p. m.—Music Appreciation talk.
- 4:00 p. m.—Recording concert.
- 7:00 p. m.—Studio program.
- 9:00 p. m.—Musical program.
- 10:00 p. m.—Monday Night Review.

TUESDAY, APRIL 10

- 12:30 p. m.—Kiwanis Luncheon broadcast.
- 1:30 p. m.—Recording concert.
- 5:00 p. m.—Concert, Five Dollar Auto Glass.
- 8:00 p. m.—Studio program.
- 8:30 p. m.—"Merry Maytag Ramblers."
- 9:00 p. m.—Studio program.

WEDNESDAY, APRIL 11

- 6:45 a. m.—The Church in the Wildwood.
- 3:30 p. m.—Music Appreciation.
- 4:00 p. m.—Recording concert.
- 8:00 p. m.—Studio program.

THURSDAY, APRIL 12

- 6:15 p. m.—Concert for Dempsey-Kimsey Downs.
- 8:00 p. m.—Catholic Truth Society.
- 8:15 p. m.—The Story Teller.
- 8:30 p. m.—"ABC" Chain broadcast.

FRIDAY, APRIL 13

- 3:30 p. m.—Music Appreciation.
- 4:00 p. m.—Recording concert.
- 4:30 p. m.—Elks program for shut-ins.
- 5:00 p. m.—Concert.
- 6:15 p. m.—Horticultural talk.
- 8:00 p. m.—Albers Brothers program.
- 8:15 p. m.—Simultaneous broadcast.
- 9:00 p. m.—"Goin' Fishin'" Club.
- 9:10 p. m.—O. M. Plummer of the Pacific International Livestock Exposition.
- 9:20 p. m.—Concert of favorite songs.

SATURDAY, APRIL 14

- 6:30 p. m.—Sports Review by Gus Hall.
- 6:50 p. m.—Duo-Art concert.

DAILY EXCEPT SUNDAY

- 9:00 a. m., 12 noon and 10 p. m.—Western Union Time Signals, weather reports, etc.
- 9:00 a. m.—Pattie Cooke, KEX Better Homes Girl.
- 10:00 a. m.—Morning Devotional Service.
- 10:15 a. m.—KEX Shopping Guide.
- 12:00 noon—Concert.
- 1:00 p. m.—Recording Concert (except Tues. and Sat.).
- 5:30 p. m.—Gabriel Snubber Sales & Service Concert.
- 6:00 p. m.—News, Stock Reports, Time Signals.
- 6:30 p. m.—Sperry Flour Children's Hour, "Grandpa Bulger" (except Saturday).
- 7:00 p. m.—Dinner Dance Concert (except Monday).
- 10:00 p. m.—Dance Frolic (except Monday).

SUNDAY, APRIL 8

- 4:30 p. m.—Recording concert.
- 6:00 p. m.—Dinner concert.
- 7:00 p. m.—Catholic Truth Society.
- 8:00 p. m.—Presbyterian Church service.
- 8:30 p. m.—American Plan program.
- 9:00 p. m.—International Bible Students.



ARTHUR W. LINDSAY
Announcer

KFOA

P. B. Gale
Station Manager
Arthur W. Lindsay
Program Dir. & Announcer
Ward J. Ireland
Announcer
H. M. Currie
Station Operator
Frederick C. Feringer
Musical Director
Gertrude Hageman
Program Clerk
Edward Fitzgerald
Commercial Manager

DAILY EXCEPT SUNDAY

- 10:00 a. m.—Rhodes' Air News
10:30 a. m.—Dorothy Neighbors, presented by Seattle Daily Times.
12:00 noon—Rhodes' Organ Recital.
2:15 p. m.—Baseball Games (ex. Monday).
5:30 p. m.—New and Weather Report (ex. Monday).
6:00 p. m.—Sperry Flour Sightseeing Hour, (ex. Saturday).
9:00 p. m.—Longine Time Signals.

SUNDAY, APRIL 8

- 1:00 p. m.—N. B. C.*
2:00 p. m.—Baseball Game—Seattle vs. San Francisco.
5:00 p. m.—Longine Time Signals.
5:00 p. m.—E. R. Buterworth & Sons concert orchestra.
5:30 p. m.—Twilight Organ Recital
6:30 p. m.—N. B. C.*
9:00 p. m.—N. B. C.*

MONDAY, APRIL 9

- 12:30 p. m.—Hi-Twelve Luncheon program. . .
1:30 p. m.—Messages from Sarah Hodnett.
6:30 p. m.—Studio program.
7:13 p. m.—Industrial News of the Manufacturers' Association of Washington.
7:30 p. m.—Better Flowers Educational Talk.
7:41 p. m.—"Something about Everything."
8:00 p. m.—N. B. C.*
9:00 p. m.—Rhodes' Organ Recital
9:30 p. m.—N. B. C.*
10:30 p. m.—Weekly frolic of the Spokane Coyotes.

*See Page 42 for detailed program of National Broadcasting Co.

Seattle, Wash.—670 Kc.

447.5 METERS—1000 WATTS

Owned and Operated by Rhodes Department Store
Arcade Square, Seattle, Washington. Phone MAIN 8000

TUESDAY, APRIL 10

- 11:00 a. m.—N. B. C.*
12:30 p. m.—Kiwanis Club luncheon program.
1:30 p. m.—"Notes from the Skipper's Log."
6:30 p. m.—Half Hour Dinner Concert.
7:00 p. m.—"Under the Crescent Moon."
8:00 p. m.—N. B. C.*
9:00 p. m.—Maxwell House Coffee orchestra and soloists.
10:00 p. m.—"Something about Everything."

WEDNESDAY, APRIL 11

- 12:30 p. m.—Rotary Club Luncheon program from the Olympic Hotel.
1:30 p. m.—Messages from Sarah Hodnett.
6:30 p. m.—N. B. C.*
7:00 p. m.—Variety program.
7:30 p. m.—Albers Bros. Poultry Talk.
7:45 p. m.—Book chat by Helmer L. Webb.
8:00 p. m.—N. B. C.*

THURSDAY, APRIL 12

- 12:30 p. m.—Shrine Club Luncheon program.
1:30 p. m.—"Notes from the Skipper's Log."
6:30 p. m.—"Golden West Girl and Her Orchestra."
7:30 p. m.—Sunde and d'Evers Due by Sunde and d'Evers ship chandlers.
8:00 p. m.—N. B. C.*
10:00 p. m.—"Something about Everything," from The World Book.

FRIDAY, APRIL 13

- 12:30 p. m.—Members Council Luncheon program from the Chamber of Commerce.
1:30 p. m.—Messages from Sarah Hodnett.
6:30 p. m.—Variety program.
7:00 p. m.—"Who's Who in Societe Candyland."

- 8:00 p. m.—N. B. C.*
10:00 p. m.—Henry and the Boss.
10:30 p. m.—Weekly frolic of the Keep Growing Wiser Order of Hoot Owls from KGW.

SATURDAY, APRIL 14

- 6:00 p. m.—Sport Revue.
6:50 p. m.—"Something about Everything."
7:00 p. m.—Boy Scout program.
7:30 p. m.—Camp Fire Girls program.
8:00 p. m.—N. B. C.*
10:00 p. m.—N. B. C.*

RADIOLA SPECIALISTS

Have a licensed power pack and amplifier installed in your Radiola 28. No batteries, no messy acids. It makes your 28 the equivalent of the 30.

If your Radiola 28 or your Radiola 26 is out of balance, its selectivity and distance are greatly impaired. We make them perform like they should.

Why not convert your Radiola 30 into a 32 by the installation of the new Dynamic Speaker?

LABORATORY OF RADIO STANDARDS

E. K. HAYES

2408 West Vernon

VERMONT 6543

Los Angeles, Calif.



CECIL P. UNDERWOOD
Chief Announcer

KHQ Spokane, Washington—810 Kc.

1000 WATTS—370.2 METERS
LOUIS WASMER, INC. Studio in the Davenport Hotel
DAILY EXCEPT SUNDAY—

- 7:00 a. m.—Inspirational Services (except Wednesday).
- 7:15 a. m.—Bailey's Cheerio Program.
- 8:30 a. m.—Inland Empire Road Reports (except Wednesday).
- 9:00 a. m.—Tull & Gibbs Household Service (except Wednesday).
- 10:00 a. m.—Sara Leigh's Home Hints, etc. (except Wed.).
- 11:00 a. m.—Farmer's Service Hour, late news, etc. (ex. Wed. & Fri.).
- 1:00 p. m.—An Hour of Happiness (except Wednesday).
- 2:00 p. m.—The Crystal Twins (except Wednesday).
- 3:00 p. m.—The Monogram Hour (except Wednesday).
- 4:00 p. m.—The Home Beautiful (except Wednesday).
- 4:30 p. m.—Bailey's Latest Recordings (except Wednesday).
- 5:00 p. m.—Service Hour, Stock, News, Time Signals (ex. Wed.).
- 5:20 p. m.—Talk on Music and Musical Instruments (ex. Wed.).
- 5:50 p. m.—U. S. Dept. Market News Service.
- 5:40 p. m.—Talk on Latest Mode in Dress (except Wednesday).
- 5:45 p. m.—Georgia O. George (ex. Wed.).
- 5:50 p. m.—Cy Jacoby (except Wednesday).
- 5:55 p. m.—Weather reports (except Wed.).
- 9:00 p. m.—Longines Correct Time.
- 10:00 p. m.—Dance Music (except Monday, Wednesday and Friday).
- SUNDAY, APRIL 8**
- 10:30 a. m.—Children's Sunday School
- 1:00 a. m.—Church services
- 1:00 p. m.—N. B. C.*
- 2:00 p. m.—Happy Hour.
- 3:00 p. m.—N. B. C.*
- 5:00 p. m.—Program presented by Bailey, Inc.
- 6:00 p. m.—Kolster Concert.
- 6:30 p. m.—N. B. C.*
- 7:30 p. m.—Church services broadcast.
- 9:00 p. m.—N. B. C.*
- 9:30 p. m.—Religious services.
- MONDAY, APRIL 9**
- 5:30 p. m.—Educational Talk.
- 6:00 p. m.—Mahlon Merrick's Concert Orch.
- 6:15 p. m.—Mr. Ben Cohn, Travelogue.
- 6:30 p. m.—Oragn Recital with soloists.
- 8:00 p. m.—N. B. C.*
- 10:00 p. m.—Fortnightly session of the Spokane Coyotes.
- TUESDAY, APRIL 10**
- 12:15 p. m.—Chamber of Commerce Luncheon.
- 6:30 p. m.—Mahlon Merrick's Concert Orch.
- 6:15 p. m.—Travelogue on Europe,
- 6:30 p. m.—"N. B. C.*
- 7:00 p. m.—"Under the Crescent Moon,"
- 8:00 p. m.—N. B. C.*
- 9:00 p. m.—Maxwell House Concert
- 10:00 p. m.—Dance music by Mahlon Merrick
- WEDNESDAY, APRIL 11**
- 6:00 p. m.—Mahlon Merrick's Concert Orch.
- 6:30 p. m.—A Musical Fruit Cocktail
- 7:00 p. m.—Mahlon Merrick and his Orch.
- 8:30 p. m.—N. B. C.*
- THURSDAY, APRIL 12**
- 6:00 p. m.—The Golden West Girl
- 7:30 p. m.—Travelogue on Europe,
- 7:45 p. m.—Special Announcements.
- 9:30 p. m.—N. B. C.*
- 10:00 p. m.—Dance music by Mahlon Merrick
- FRIDAY, APRIL 13**
- 2:00 p. m.—An Hour with "Miss Spokane."
- 6:00 p. m.—Mahlon Merrick's Concert Orch.
- 7:15 p. m.—Travelogue on Europe
- 8:00 p. m.—N. B. C.*
- 9:00 p. m.—Izaak Walton League program.
- SATURDAY, APRIL 14**
- 5:30 p. m.—Aids to the Farmer and Garden,
- 6:00 p. m.—Mahlon Merrick's Concert Orch.
- 7:15 p. m.—Travelogue on Europe,
- 8:00 p. m.—N. B. C.*
- 10:00 p. m.—Dance music by Mahlon Merrick

*See Page 42 for detailed program of National Broadcasting Co.

KGA

Spokane, Washington—1150 Kc.

260.7 METERS—2000 WATTS
Owned and Operated by Northwest Radio Service Co., located in the Old National Bank Building, Spokane Washington
F. C. DAHLQUIST, President H. E. STUDEBAKER, Studio Manager

DAILY EXCEPT SUNDAY

- 8:57 a. m.—Time Signals.
- 9:00 a. m.—Betty Cooke, KGA Better Homes Girl.
- 10:00 a. m.—Musical program, interspersed with poems.
- 11:00 a. m.—Dietetic Talk by Harriet Klein (except Tuesday, Thursday and Saturday).
- 11:00 a. m.—Shopping Service (except Tues., Thurs. and Sat.).
- 12:00 noon—Time Signals.
- 12:01 p. m.—Weather Forecast, News and Editorials.
- 12:15 p. m.—Logan and Bryan Grain Quotations; Livestock Quotations.
- 12:20 p. m.—Musical program (except Mon., Wed. and Fri.).
- 12:20 p. m.—U. S. Radio Farm School (except Tues., Thurs. and Sat.).
- 5:15 p. m.—Kiddies' Half Hour featuring Uncle Andy.
- 6:00 p. m.—Time Signals.
- 6:01 p. m.—Service talk with music.
- 7:00 p. m.—Music (except Monday).
- 10:00 p. m.—Dance music (except Wed.).
- SUNDAY, APRIL 8**
- 11:00 a. m.—First Presbyterian Church.
- 12:30 p. m.—Musical program.
- 1:00 p. m.—Talk on Psychology.
- 7:30 p. m.—First Presbyterian Church.
- MONDAY, APRIL 9**
- 7:00 p. m.—Varied studio program.
- TUESDAY, APRIL 10**
- 2:00 p. m.—Chronicle Home Management School.
- 4:00 p. m.—Musical program and news.
- 9:00 p. m.—Simultaneous broadcast with KJR.
- WEDNESDAY, APRIL 11**
- 12:30 p. m.—Varied musical programs and news items.
- THURSDAY, APRIL 12**
- 8:30 p. m.—"ABC" Chain broadcast.
- FRIDAY, APRIL 13**
- 12:30 p. m.—Musical program.
- 8:15 p. m.—Simultaneous broadcast.
- SATURDAY, APRIL 14**
- 10:00 p. m.—Dance music.

Q and A

(Continued from Page 18)

creased to improve summer reception, but so far the complete elimination of static has not been attained. Probably the most successful method is the system in which both an antenna and loop are used simultaneously for reception, both being tuned to the same frequency; the loop turned against the station received so that it picks up only static while the antenna picks up the signal and the static. Then through a specially designed coupler the two are made to buck each other in a secondary winding. The static cancels itself out while there is nothing to oppose the signal and it goes on through the regular amplification processes. For the benefit of our experimental readers this system of static reduction will be described in detail with diagrams and results obtained in a future issue.

N. E. Brown

(Continued from Page 25)

versal winding machines, electric and gas furnaces, with electrical pyrometers for precise temperature measurements, audio and radio frequency oscillators and gain measuring panel, special power oscillator for use in connection with precision wavemeter for checking the frequency of broadcasting stations, motor-generator sets to meet a wide range of requirements, etc., etc.

"Brownie" numbers among his clients such concerns as the Shell Oil Co., The Braun Corporation, General Electric Co., Janss Investment Co., U. S. Electrical Mfg. Co., Federal Tel. Co., Oilfields Service Corporation, and nearly every broadcast station in Southern California. He has built broadcast stations, public address systems, radio receivers, etc., and, in fact, designs, constructs, and repairs anything radio, electrical or mechanical. And he has been so darned successful at it that he is putting up a fine new building for a greatly enlarged laboratory still further out on Western avenue, and he knows that there will still be a well-worn path to his door . . . that location means nothing.

He belongs to the leading American technical societies, and has a long record of engineering experience and achievements that gives him the right to the slogan, "We know."

Who Is She?

Madame X, internationally known pianist, who has been in retirement for more than three years, has chosen to return to the concert stage through the



medium of Radio. KFI will present Madame X in one concert, Friday evening, from 8 to 9.

The masked pianist prefers to keep her identity a secret, believing that in this way more sincere and honest criticism of her art will be possible than if she played under her own famous name. If the concerts are favorably received by the radio audience, Madame X will return to the concert stage, where she was once loudly acclaimed.

Majestic Radio

(Continued from Page 30)

it perform in competition with many sets built to sell at double its cost, and I believe the Majestic walked away with the honors.

"The next feature that will appeal to radio buyers, next to the amazing performance of the Majestic Radio, is its price. The small model console, complete, with power units and dynamic speaker, will sell in Southern California for less than \$150. This is less than half the cost of radio sets similarly equipped and the past reputation of the Grigsby-Grunow Company is assurance that their new radio will be every bit as efficient as were their well-known Majestic Power Units."

Timely Trade Topics

DX and Noise

A gang of DX-ers went down to the beach last Friday night, hung up 75 feet of Aurora Radium antenna wire, threw a dozen copper plates coated with the same radium ore material on the ground, hooked up a three-tube short waver and tuned in RFN of far-away Khabarousk and listened to some Russian entertainment in the early morning hours. The broadcast band was very noisy with an abundance of natural static, but the short waves were as quiet as the grave, and RFN was steady and clean cut.

Havana, Schenectady and Toronto were the best to be had in the broadcast band on the Magnaformer 9-8, with some music from Wellington trying to break through the noise level later on.

Mr. Joe Etienne, of Chanslor and Lyon, just received a letter from Mr. Paul B. Klugh, Vice President of Zenith Radio Corporation, that his trip to the Coast had not only been enjoyable but very successful. The Zenith organization is very enthusiastic about the new automatic Receiver and expect to present something very startling to the radio public in the near future.

The Electric Lighting Supply Co., 216 West Third street, Los Angeles, Calif., have been appointed authorized dealer for the famous Kolster line of receivers.

The next meeting of the Radio Mfg. Agents' Association will be at the Elite Cafe on April the 20th at 2:15 noon.

Mr. Hensel who gave an excellent talk at the Breakfast Club recently will be the speaker at the meeting. It will be an open meeting and all jobbers, retailers and everyone interested in Radio is invited.

Harry W. Harrison, Inc., for the past eight years located at 848 South Flower St., Los Angeles, moved April 1 into new

quarters at 555 So. Figueroa St.—the Johnathan Club Building. Mr. Harrison has discontinued the automotive battery service end of the business which he carried on at the old stand, and is now concentrating on retail radio sales and service. He will continue to handle the lines which led to his success in the past, namely: Radiola, Zenith and Atwater Kent. A commodious basement under the new store makes an ideal place for the radio service department, which will be efficiently manned as before. The old telephone number, Trinitry 9777, will be retained.

Oscar Getz, General Salesmanager of the Steinite Laboratories, manufacturers of the Steinite All-Electric Radio, was a recent guest of L. J. Stein and R. C. Hulbert of the National Radio and Supply Company of Los Angeles. His present tour will take him through the southwest, south and Cuba prior to returning to headquarters in Chicago.

"Radio is stabilized now and the incipient years of the industry have passed," Getz said.

"There are thousands of dealers through the nation who would do anything to obtain the perfect reception qualities which make California a year-around market."

W. G. Bruce, Western representative of the Belden Mfg. Co., recently returned from a trip to Salt Lake City, and called upon the Utah Products Co., manufacturers of the Utah loud speakers. He was most pleased with the volume of business done by this company at this season of the year, and predicts a bog fall and winter season for the Utah line.

<p>! NOTICE !</p> <p>Burned-Out Audio Transformers and Speaker Units</p> <p>RE-WOUND</p> <p>A. W. COOPER VERMONT 0767 1315½ W. 39th St., L. A.</p>
--

WALTER BIDDICK — Phone Westmore 9137

"A Complete Radio Program and Announcement Service"



FREEMAN H. TALBOT
Announcer

KOA Denver, Colorado—920 Kc.

5000 WATTS—326 METERS GENERAL ELECTRIC COMPANY
Pacific Standard Time
"Rocky Mountain Broadcasting Station"

DAILY EXCEPT SUNDAY—

- 11:00 a. m.—Time Signals.
- 11:01 a. m.—Weather, Stock and Produce Reports.
- 11:15 a. m.—Organ Recital.
- 4:00 p. m.—Stock and Market Reports (except Mon. and Sat.).
- 4:25 p. m.—Road Reports, courtesy Rocky Mountain News and Denver Evening News (except Monday, Wednesday and Saturday).

SUNDAY, APRIL 8

- 10:00 a. m.—Easter Day service of Central Presbyterian Church.
- 3:20 p. m.—Organ recital.
- 4:20 p. m.—Capitol theater family, N. B. C.
- 5:15 p. m.—Collier's Radio hour, N. B. C.
- 6:15 p. m.—Brown Palace Hotel Orchestra.
- 6:45 p. m.—Easter Day service of Central Presbyterian Church.

MONDAY, APRIL 9

- 10:30 a. m.—Program by Reese School.
- 4:30 p. m.—Roxy theater, N. B. C.
- 5:00 p. m.—"Great Moments in History," N. B. C.

"CHIEF CRYSTAL"

(Cat's Whisker Included)



Provides—
Clearness
Volume
Sensitivity
Long Life
Satisfaction

(Insist on This Label)

AT ALL DEALERS

CHIEF RADIO CRYSTAL CO.

608 E. Fifth St., Los Angeles, Calif.

Distributed by

HERBERT H. HORN

1629 S. Hill St.

Phone WE. 6331

- 5:30 p. m.—Stocks, markets, livestock, produce and news bulletins.
- 5:55 p. m.—Road reports.
- 6:00 p. m.—"Riverside Hour," N. B. C.
- 6:30 p. m.—Brown Palace Hotel Orchestra.
- 7:00 p. m.—Scheuerman's Colorado Orch.
- 7:15 p. m.—"The Holy City."

TUESDAY, APRIL 10

- 2:30 p. m.—Housewives' matinee.
- 3:30 p. m.—Radiograms.
- 5:00 p. m.—Stromberg Carlson, N. B. C.
- 5:30 p. m.—Seiberling Singers, N. B. C.
- 6:00 p. m.—Brown Palace Hotel Orchestra.
- 6:30 p. m.—Farm question box.

WEDNESDAY, APRIL 11

- 4:30 p. m.—Savoy Plaza Dinner Music, N. B. C.
- 4:45 p. m.—Frederick William Wille, N. B. C.
- 6:00 p. m.—Ipana Troubadours, N. B. C.
- 6:30 p. m.—Brown Palace Hotel Orchestra.
- 7:00 p. m.—Scheuerman's Colorado Orch.
- 7:15 p. m.—KOA Mixed Quartet.
- 9:00 p. m.—Chief Gonzales and orchestra.

THURSDAY, APRIL 12

- 2:30 p. m.—Rural Schools.
 - 3:00 p. m.—Housewives' matinee.
 - 3:30 p. m.—"The Morning Post Stylogram."
 - 3:45 p. m.—"Child Health."
 - 4:30 p. m.—National Mixed Quartet, N. B. C.
 - 5:00 p. m.—Dodge Brothers' hour, N. B. C.
 - 5:30 p. m.—Brown Palace Hotel Orchestra.
 - 6:00 p. m.—Maxwell House Coffee hour, N. B. C.
- SILENT NIGHT.

FRIDAY, APRIL 13

- 2:30 p. m.—Housewives' matinee.
- 4:30 p. m.—"Old Melodies and New," N. B. C.
- 5:00 p. m.—Orchestra and Cavaliers, N. B. C.
- 6:00 p. m.—Whittall's Anglo Persians, N. B. C.
- 6:30 p. m.—Colorado Agricultural College.
- 7:00 p. m.—Solitaire Hour.
- 7:30 p. m.—Music and Novelty program.

SATURDAY, APRIL 14

- 4:00 p. m.—South Sea Islanders' Hawaiian Orchestra, N. B. C.
- 4:30 p. m.—Pennsylvania Hotel Dance Orchestra, N. B. C.
- 5:00 p. m.—RCA Hour, N. B. C.
- 6:00 p. m.—Preview of International Sunday School lesson.
- 8:00 p. m.—Dance program.



Beware of Imitations
WESTMORE 2712

*What is your favorite station? You can keep
it on the air by patronizing it.*

The Mott Station

KFWO

The Sunshine Station
on the Sunshine Island
of Catalina

"Off the Coast of Southern California"



*For Advertising Rates Write to Walter Biddick,
487 Chamber of Commerce Bldg., Los Angeles,
or to the Station at Avalon, Catalina Island, Calif.*

*And the Only Station on the Pa-
cific Coast that is Licensed to
Broadcast on Two Frequencies:*

**1000 Kc (299.8 Meters) and 5650 Kc.
(57.03 Meters)**

Contents

	Page		Page
Radio Topics	5	"Meet the Folks, Brownie!"	25
DX Club Correspondence	17	Power Dynamic Speaker	26
Questions and Answers	18	Studio News	28
The Studio	21	Time Tables	33-39
Crosley Jewelbox	22	Detailed Programs	42-73
		Trade Topics	75

DIRECTORY OF DETAILED PROGRAMS

	PAGE		PAGE
NBC, Pacific Coast Network	42	KFSD, San Diego	61
KFI, Los Angeles	44	KMIC, Inglewood	62
KHJ, Los Angeles	46	KELW, Burbank	62
KNX, Hollywood	48	KFON, Long Beach	64
KMTR, Hollywood	50	KPO, San Francisco	65
KFWB, Hollywood	52	KGO, Oakland	67
KNRC, Santa Monica	54	KYA, San Francisco	67
KPLA, Los Angeles	56	KFRC, San Francisco	68
KFWO, Avalon	56	KGW, Portland	70
KGFJ, Los Angeles	58	KEX, Portland	71
KEJK, Beverly Hills	58	KJR, Seattle	71
KFSG, Los Angeles	59	KFOA, Seattle	72
KTBL, Los Angeles	59	KHQ, Spokane	73
KFQZ, Los Angeles	60	KGA, Spokane	73
KGEF, Los Angeles	60	KOA, Denver	76

INDEX TO ADVERTISERS

	PAGE		PAGE
Advance Electric	24	Lansing Mfg. Co.	47
Aurora Laboratories	57	National Carbon	53
Armo Laboratories	65	National Radio & Supply Co.	20
American Radio Company	29	Pacific Wholesale, Inc.	12
Chief Crystal Co.	76	Peerless Dealers	3
CeCo Manufacturing	23	Powell Mfg. Co.	59
California Transformer Co.	26	Radio Constructors Corp.	69
De Jarnatt Radio Ground	60	Radio Manufacturers Supply	66
Electric Lighting Supply	68	Radio Supply	6-7
Emsee Radio Co.	61	Rapp, John G. Corp.	19
French Battery Co.	79	Rendler, J. C.	27
Gilfillan Bros.	45	Radiola Dealers	63
Grisby-Grunow Hinds	32	Radio Service Shop	52
Houlette Music Co.	55	Rimpau Radio	51
Henger-Seltzer Co.	4	Smith, C. W.	16
Hammarlund-Roberts	31	Standard Radio	64
Kierulff & Ravenscroft	2	Sunset Mfg. Co.	24
Kleer-Tone Distributing Co.	70	Sparton Dealers	13
Kruger, B. Co.	30	Sears-Roebuck	30
Jensen Radio Mfg. Co.	10-11	Thomas, Ray, Inc.	40
Laboratory of Radio Standards	72	Tohey, A. J.	15
Listenwalter & Gough, Inc.	43	Ungar & Watson	20
Lawton, C. C.	8-9	Yale Radio Electric Co.	40, 41, 80

THE PACIFIC COAST'S GREAT RADIO WEEKLY DELIVERED TO YOUR HOME 52 WEEKS FOR ONLY \$3.00

RADIO DOINGS, 407 East Pico St.,
Los Angeles, California.

Enclosed is \$3.00. Please mail RADIO DOINGS each week for one year to my address.

Name.....

Address.....

RAY-O-VAC

RADIO "B" BATTERY POWER

For Less Money



"THE MASTER"
No. 9303

New Lower Prices

Effective April 1

*That's the best news for a
month of Sundays!*

*Going to cost less to oper-
ate radio!*

And "lower prices" doesn't mean cheaper quality, either. Far from it! Ray-O-Vac Batteries, famed on two continents for its cell-pocket construction and pitchless top, is, indeed, being constantly improved. Nothing is being left undone to make and keep Ray-O-Vac the world's best radio battery. Prices on all kinds of merchandise

are undergoing a downward quality, is no exception to this rule. Besides, Ray-O-Vac production plans for 1928 point to a big output. The bigger the output, the less cost, per unit, of production. That's why Ray-O-Vac, the battery famous for long life and good reception comes to you now to help you enjoy your radio at less cost of operation. Ask your dealer.

FRENCH BATTERY COMPANY

MADISON, WISCONSIN

737 Terminal Street
LOS ANGELES, CALIF.

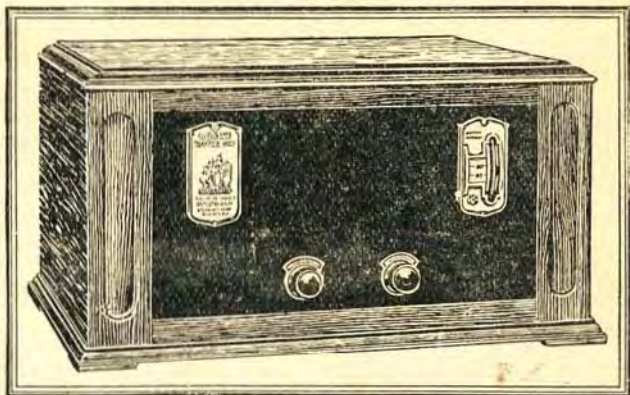
First Ave. So. & Walker Sts.
SEATTLE, WASHINGTON

625 Third Street
SAN FRANCISCO, CALIF.



BOSCH RADIO

OUTSTANDING VALUE
SUPERLATIVE PERFORMANCE



Model 126

Six Tube, Self-contained, Complete AC Operation;
Single Station Selector, Illuminated, Marvelous
Tone and Volume, Using the New

CUNNING AC TUBES

Priced at \$119

(Less Tubes and Speaker)

Many Other Models to Choose From, All AC
Operated, Ready to Plug in to Your
Nearest Light Socket.

Model 116 \$160 Model 136 Consolette \$195
Model 146 Consolette \$139 Model 96 Console \$295
Model 107 Console \$440

See Your Neighborhood Bosch Dealer

Yale Radio Electric Co.
Exclusive Wholesale Distributors

1111 Wall Street

LOS ANGELES

WEstmore 3351

This file including all text and images are from scans of a private personal collection and have been scanned for archival and research purposes. This file may be freely distributed, but not sold on ebay or on any commercial sites, catalogs, booths or kiosks, either as reprints or by electronic methods. This file may be downloaded without charge from the Radio Researchers Group website at <http://www.otrr.org/>

Please help in the preservation of old time radio by supporting legitimate organizations who strive to preserve and restore the programs and related information.