

NOW!

Majestic B Power Units

For Any Radio

\$1.00

Down



FREE
Installation

Try This Guaranteed B Power Unit

No more "B" batteries to buy. Gives 180 volts output. Will operate any set. Especially designed for power tubes. Used and endorsed by Radio Engineers, Editors, and hundreds of thousands of users.

**CONTAINS NO ACIDS OR LIQUIDS
ABSOLUTELY NO HUM
BUILT TO LAST A LIFETIME**

Phone Empire 1141

OR MAIL THIS COUPON

L. A. DUNCAN

2891 West Pico Street

Los Angeles

Please send information regarding wonderful Majestic Offer.

Name _____

Address _____

Phone _____

New York Office
J. W. HASTIE
155 East 42nd Street
Vanderbilt 4661

Chicago Office
A. G. RUDOLPH
500 N. Dearborn St.

San Francisco Office
CONGER & MOODY
Sharon Building
Kearney 3483

Radio Doings

Trade Mark Reg. U. S. Pat. Off.

407 East Pico Street, Los Angeles, Calif.

"The Red Book of Radio"

H. C. CHARLES
Editor

Phone WEStmore 1401

KENNETH G. ORMISTON
Technical Editor

J. S. MILLER
Associate Editor

MAJ. LAWRENCE MOTT
Associate Editor

(Entered as second-class matter, Nov. 25, 1922, Los Angeles, Cal., Post Office, under Act of March 3, 1897.)
Copyright, 1926, by Horwood Publishing Co.
Issued Weekly. Ten Cents a Copy, Three Dollars a Year. Canada and Foreign Countries, \$3.50 per Year.

Vol. X Los Angeles APRIL 30, 1927 San Francisco No. 18

IN THIS ISSUE

Radiograms	- - - - -	13
Topics of the Day	- - - - -	14
True Cascade Regeneration	- - - - -	15
Trouble Shooter	- - - - -	22
Woman's Page	- - - - -	26
Koo-Koo-Kolyum	- - - - -	27
DX Club	- - - - -	28
Time Tables	- - - - -	33-39
Detailed Programs	- - - - -	42-72
Broadcasters' Digest	- - - - -	75
Trade Notes	- - - - -	77-78

ONLY \$3.00 A YEAR

Have RADIO DOINGS mailed to your home every week. Fill out blank below. Either mail to us, or your dealer will be glad to take care of it for you. Please indicate whether NEW or RENEWAL.

HORWOOD PUBLISHING CO., 407 E. Pico St., Los Angeles.

CONGER & MOODY, Sharon Building, San Francisco, Calif.

Gentlemen: I enclose \$3.00, for which send me RADIO DOINGS for one year.
NEW—RENEWAL.

Name _____

Address _____



FREEMAN H. TALBOT
Announcer

Denver, Colorado—322.4 Meters

KOA

930 KILOCYCLES—5000 WATTS
GENERAL ELECTRIC COMPANY
Pacific Standard Time

"Rocky Mountain Broadcasting Station"

DAILY EXCEPT SATURDAY AND SUNDAY—

10:45 a. m.—Weather, Stock and Produce Reports.

5:00 p. m.—Stock and Market Reports.

5:30 p. m.—Musical Program.

DAILY EXCEPT SUNDAY—

11:15 a. m.—Organ recital.

WEEK COMMENCING SUNDAY, MAY 1, 1927

SUNDAY, MAY 1

10:00 a. m.—Service of St. John's Episcopal Cathedral, Denver.

2:00 p. m.—Opening Music Week program will be given at the Denver Municipal Auditorium, Denver, by the Senior and Junior High Schools directed by John C. Kendel.

4:00 p. m.—Vesper service from St. John's Episcopal Cathedral, Denver.

5:30 p. m.—Dinner concert, Brown Palace Orchestra.

6:45 p. m.—Organ recital from St. John's Episcopal Cathedral, Denver.

MONDAY, MAY 2

11:00 a. m.—Artists' concert, broadcast from Denver Municipal Auditorium.

1:00 p. m.—"An hour spent with Ludwig von Beethoven," presented by the Denver College of Music.

2:00 p. m.—Talk, "Music vs. Noise."

6:00 p. m.—Open-air twilight concert from Greek Theater of Civic Center.

7:15 p. m.—Program of modern music presented by Denver Chapter of Pro Musica.

TUESDAY, MAY 3

11:00 a. m.—Artists' concert, broadcast from Denver Municipal Auditorium.

1:00 p. m.—"An hour with Edvard Hagerup Grieg," presented by the Lamont School of Music.

2:00 p. m.—Talk, "Common Sense in Music."

3:00 p. m.—Final examination in the Music Memory contest.

6:00 p. m.—Open-air twilight concert from Greek Theater of Civic Center.

WEDNESDAY, MAY 4

11:00 a. m.—Orchestra program, the Greeley Philharmonic Orchestra.

1:00 p. m.—"An hour with Frederic Francois Chopin."

2:00 p. m.—Talk, "Orchestral Instruments."

6:00 p. m.—Open-air twilight concert from Greek Theater of Civic Center.

7:15 p. m.—Symphony program presented by the Greeley Philharmonic Orchestra.

THURSDAY, MAY 5

11:00 a. m.—Artists' concert, broadcast from Denver Municipal Auditorium.

1:00 p. m.—Part 1—A Cycle of Old English Melodies. Part 2—Works of Ethelbert Nevin.

6:00 p. m.—Open-air twilight concert from Greek Theater of Civic Center.

FRIDAY, MAY 6

8:30 a. m.—State Contests (exclusive of Denver) for High School Girls' Trios, male quartets, mixed quartets, instrumental trios, string quartets, bands and orchestras, broadcast from Denver Municipal Auditorium.

12:00 noon—Band program, broadcast from Greek Theater of Civic Center.

1:00 p. m.—State Contests (exclusive of Denver) for High School Glee Clubs and choruses, broadcast from Denver Municipal Auditorium.

6:00 p. m.—Open-air twilight concert from Greek Theater of Civic Center.

6:30 p. m.—Preview of International Sunday School lesson.

7:00 p. m.—Opera, "The Mikado," presented by the Mountain States Telephone and Telegraph Company.

9:00 p. m.—Sterling High School band, L. E. Smith, director.

SATURDAY, MAY 7

11:00 a. m.—Sterling High School Band, L. E. Smith, director.

7:00 p. m.—Studio program. Instrumental concert by Denver Union Pacific Shop Employees' Band.

9:15 p. m.—Dance program, Scheuerman's Colorado Orchestra, from the Cathedral ballroom, Albany Hotel, Denver.

Is Your Radio Doing Its Stuff?

We are equipped to render prompt and efficient service in Balancing and Repairing Super-Heterodynes, Infradynes and all other Receivers.

GUARANTEED RESULTS—OR NO CHARGE

Hear Our Four-Tube Set Working Without Antenna or Ground

SETS BUILT
TO ORDER

SNIDER'S RADIO SERVICE

4682 Hollywood Blvd.
(Just East of Vermont Avenue)

INTERMEDIATE
TRANS-
FORMERS
MATCHED

Phone OLYMPIA 4111

OPEN EVENINGS

Los Angeles, Calif.

OUR EXCEP

Get Two Great M
the Pri

SAVE

RADIO NEWS—TH
with the largest circ
any Radio publicatio

SCIENCE A

AMAZII
Regula

RADIO DOINGS—
Radio Weekly—th
Pacific Coast—

Regula

These leaders in their resp
Monthly, Radio and Scie
Pacific Coast Weekly—

BOTH NO

You Can't Afford

Attach Money Order, Check or

RADIO DOINGS,
407 E. Pico Street,
Los Angeles, Calif.

Send me RADIO DOINGS
INVENTION or AMAZING STO

Name.....

Address.....

City and State.....

(Specify NEW or RENEWAL)



Two Sales Winners



This
**Junior Cone
Speaker**

will work satisfactorily
on a small receiver or
will handle the volume
of a large receiver.

Price \$10.00

The New Utah Piano Unit

The New Utah Piano Unit will
convert your piano into a won-
derful Loud Speaker for only

\$10.00

C. W. SMITH CO.

Home of Utah Speakers

WEstmore 3291

Los Angeles

1125 Wall

Simple

[To Own ~ ~]
 [To Buy ~ ~]
 [To Operate ~]

This is the *complete* set built for people who will not fuss with wires, batteries, speakers and the usual three or four controls of the usual radio set.

The HOLMES Rotofor Radio is self-contained with built-in cone speaker and the famous PHILCO Socket Power. All you have to do is attach it to an antenna and the electric light socket and turn it on.

A single dial sweeps the ether. A line of stations march by at one twist of your hand. Any station in range can be tuned in with one hand in a jiffy.

COMPLETE

When you purchase this set you need never purchase another. Nor will you be put to the trouble and expense of buying new batteries nor to the trouble of recharging.

\$245.00=
Everything!



*"Turn One
 Dial to Get
 Everything
 On the Air"*

Standard equipment includes 5 famous CeCo tubes, PHILCO Socket Power, built-in HOLMES Cone Speaker and the Model 41 Holmes Cabinet, all matched and tested by Tobey experts before delivery. The price is \$245, installed. Your dealer will arrange terms. Use the coupon for further details. Your dealer will demonstrate this set for you in your own home—or if he hasn't one on hand, call WESTmore 4038 for a factory expert. He will call any evening you say.

---TEAR OUT AND MAIL TO---

A. J. Tobey Co.

Fifteenth and Hope Streets, Los Angeles

Please send me further information and details regarding the HOLMES Combination.

My Address is.....

My Name.....

City..... Phone Number.....

Dealer's Name..... Address.....



LOS ANGELES CE-CO DEALERS

J. C. Rendler
625 S. Main
Philco Sales & Service
1514 South Hope
Standard Radio
417 W. Pico
Walkers Radio
5835 S. Vermont
Vermont Center Radio
6219 S. Vermont Ave.
H. H. Walker
1323 Venice Blvd.
Sturgis Music
4713 S. Broadway
Nilsson & Nelson
4320 Avalon
Tivoli Radio Shop
4204 S. Central
Lee's Radio & Art Co.
4545 Whittier Blvd.

Wilkins Radio Mfg. Co.
5317 S. Central
Phair Radio Co.
242 E. Florence
Hines Radio
7322 S. Broadway
McWhorters Radio
8625 S. Vermont
Henderson Radio Store
3805 Whittier Blvd.
C. S. Young
3713 East First
Johnson Auto Supply
765 Atlantic Blvd.
Atwater Radio Shop
3208 Glendale Blvd.
Holland Electric Shop
5632 Pasadena Ave.
McNeil Music Co.
5711 Pasadena Ave.
Briong & Bushard
1717 W. Adams

HOLLYWOOD

Hollywood Radio
709 N. Western
Hollywood Electric
6656 Hollywood Blvd.
Mohawk Battery & Radio
2115 Sunset Blvd.
Doran Electric Chop
7515 Sunset Blvd.
Lovinger-Melrose Radio
4436 Melrose

CeCo Tubes Will Help Your Radio

*Bring in Remote Stations
Even During Summer Months*

CeCo Tubes will clear up deep, sonorous bass notes as well as the faintest sounds of a violin—and help eliminate "squeaks" and "howls." A new tone quality to marvel at.

Because of the matchless sensi-

tiveness of CeCo Tubes they are ideally suited for use in cities and other congested broadcasting districts—they materially assist any radio set to go through the locals. Hear these ultra sensitive tubes at any CeCo dealer.

"There's a CeCo Tube for Every Socket"

A. J. Tobey Co.

15th and Hope Sts.

Westmore 4038

Melrose Radio
5663 Melrose
Wesholly Radio
7406 Melrose
Carmel Radio
8165 Santa Monica Blvd.
Doran Electric Shop
8030 Santa Monica Blvd.

OUT-OF-TOWN CE-CO DEALERS

ALHAMBRA
Baird Radio Shop
226 W. Main St.
MONTEREY PARK
Monterey Park Music Co.
102 E. Garey
GARDEN GROVE
W. E. Ashley
PASADENA
Thomas & Summerville
41 N. Broadway
Webster Electric Garage
100 E. Union
Service Radio
1172 E. Colorado
GLEN DORA
F. A. Selmers
LANKERSHIM
Lankershim Music Co.
Lankershim Radio and
Service Shop
5241 Lankershim Blvd.
VAN NUYS
Van Nuys Music Co.
Maraden Electric
CULVER CITY
H. E. Blunt
6808 Putman

INGLEWOOD
Inglewood Mercantile Co.
120 N. Commercial St.
HERMOSA BEACH
Radio Strong
19 Pier Ave.
AVALON
Avalon Radio
607 Crescent
WILMINGTON
Wilmington Variety
716 W. Anaheim
LONG BEACH
Kelm Radio
Cor. 4th and Locust
Coast Radio
245 E. 7th St.
HUNTINGTON PARK
H. L. "Radio" King
116 E. Irvington
P. A. Dougherty
158 Pacific Blvd.
BELLFLOWER
H. L. Peterson Shoppes
Pacific and Mayne
DOWNEY
Darnell Electric Shop
1182 Crawford St.
POMONA
Falls Tire & Battery Co.
201 E. 2nd St.
COLTON
H. C. Bliss
SAN BERNARDINO
Thew Radio.
ELSINORE
Elsinore Plumb. & Elec.
REDLANDS
Dale E. Slinger
414 Orange St.
CROWN CITY
Crown City Garage

ANAHEIM
Caverly Radio
217 W. Center
BREA
Bennet's Radio
Murray Garage & Service
Station
CARLSBAD
Carlsbad Pharmacy
EL CAJON
El Cajon Electric
Lyon Appliance
CORONADO
W. C. Bechtel Liberty
Garage & Batt. Serv.
718 Third St.
PACIFIC BEACH
Sunset Super Service
Station
1002 Garnett
PALM CITY
A. C. McBride
Palm City Garage.
SAN DIEGO
College Service
Park and El Cajon
Maryland Auto Supply
7th and F St.
Market St. Radio Store
1529 Market St.
Miller Bros.
30th and University
Kinney Bros.
30th and A St.
Radio Dept., Southern
California Music
720 Broadway.
United Radio Elect.
2807 Univesity.

There are Many

Very good kits on the market from which you can build yourself a set that will out-perform most factory built sets.

SILVER-MARSHALL SHIELDED SIX
SILVER COCKADAY II
MADISON MOORE SUPER
INFRADYNE
BROWNING-DRAKE
KARAS EQUIMATIC
BOULDERADIO EIGHT-IN-LINE
HAMMARLUND HI Q
QUADRAFORMER KITS

Your Dealer Has These Kits — Let Him Help You Pick
Your Set.

We can also offer you a very large assortment of Battery Power Units—for both A and B Batteries. Trickle Chargers. Also Horn type and Cone Speakers.

DEALERS: Park Next Door at Our Expense

RADIO SUPPLY CO.

WHOLESALE

920 S. Broadway

VA. 6063

Los Angeles

New 1927 Catalogue Now Ready—Send For It

LET THE RADIO SUPPLY CO.

Fill your Parts orders. We distribute the best known quality lines and carry large stocks at all times to handle your needs.

READ OVER THIS LIST OF PARTS

Alco Loops	Dublier Condenser Corp.	Naald Truphonic Units, Etc.
Accuratune Dials	Dudlo Mfg. Co. Wire	National Co. Parts
Acme Apparatus	Dunham Loops	Paent Products
Acme Trickle Chargers	Eby Binding Posts	Penetrola Kits
Advance Crystals	Eight-in-Line Super Unit	Polymet Mfg. Co. Condensers
Aero Products	Ekko Ground Clamps	Premier Parts
Aerovox Wireless Products	Electrad Products	Raco Aerial Wire
Alden Mfg. Co. Parts	Electrohot Soldering Irons	Radiall Co. Amperites
All-American Products	Elkon Chargers	Rauland Lyric Transformers
Amertran Products	Formica Insulation Co.	Raytheon Tubes
Amperites	Franco B. Batteries	Remler Products
Amsco Condensers	Frost Products	Samson Transformers
Arco Coils	General Radio Parts	Sangamo Condensers
Balkite Chargers, Etc.	Goodrich Rubber Panels	Sensory Insulators
Benjamin Elec. Mfg. Products	Hammerlund Products	Silite Trickle Chargers
Bodine Loops	Harkness Kits	Silver Marshall Products
Boulderadio Eight-in-Line Super Unit	Hedgehog Transformers	Spaulding Bakelite
Branston Coils	H-K Solderdpt Lugs	Steinle Eliminators
Bremer-Tully Products	Hoosick Parts	Sterling Meters and Testers
Bruno Coils	Jefferson Products	Stevens Tools
Camfield Coils	Karas Products	Testrite Hydrometers
Carborundum Products	Kelbrackets	Thordarson Transformers
Cardwell Condensers	Kellogg Parts	Thorola Coils
Carter Products	Kodel Products	Tobe Condensers
Ceco Tubes	Kurz-Kasch Dials and Knobs	Tom Mack Products
C R L Var High Resistances	Leaf-Burkhard Cone Speakers	Tower Speakers
Chicago Kester Solder	Lemco Transformers	Trimn Cone Speakers
Claroat	Madison Moore Units	Universal Battery Clips
Crescent Transformers	Marco Products	Vesta Power Units
Daven Radio Parts	Mignon S. L. F. Condensers	Victoreen Parts
DeJur Rheostats	Mueller Universal Clips	Weston Products
DeLuxe Products	Muter Lightning Arrestors	Willard Batteries
Dictogrand Speakers		X. L. Variodensers
		Yaxley Products

THORDARSON, ALL-AMERICAN AND MAGNAVOX
REPLACEMENT TRANSFORMERS IN STOCK

VESTA 35 and 50 Amp. and HOBICO A Power Units

ACME, GENERAL RADIO, ALL-AMERICAN, KODEL,
BALKITE, SILVER MARSHALL, STERLING and
WEBSTER ELMINATORS

ACME, STERLING, VESTA, BALKITE, TUNGAR and
SILITE TRICKLE CHARGERS

DEALERS: Park Next Door at Our Expense

RADIO SUPPLY CO.

WHOLESALE

920 S. Broadway

VA. 6063

Los Angeles

New 1927 Catalogue Now Ready—Send For It

The New

Hexadyne 6-Tube

PORTABLE



**NEW IMPROVEMENTS WITH BEAUTY AND
SIMPLICITY**

**SINGLE DIAL CONTROL
OPERATES WITH A LOOP
EXCEPTIONAL DISTANCE**

The Hexadyne stands today not only as the leader in the portable field but the recognized standard of advanced radio engineering. No other portable radio on the market compares with the Hexadyne for beauty of tone and simplicity of operation.

List Price \$125.00 Complete with All Accessories
Including the New Power Tube

Dealers Write at Once for Attractive Proposition

Manufactured by W. D. Hunt Co., Inc., 4961 Sunset Blvd., Los Angeles
Telephone OL. 3104

WHOLESALE DISTRIBUTORS

C. W. Smith Co.
1125 Wall St., Los Angeles

Pacific Wholesale, Inc.
1320 S. San Pedro, Los Angeles

Radiograms

From

CLOYD MARSHALL, JR.

Tolerance

At times there is little tolerance displayed by people, and it is never amiss to comment upon it. The questionable methods and the intolerance for common decency displayed by the ward bosses, saloon-keepers and many brewers years ago goaded a majority of the American people into the creation of the famed amendment eliminating almost over night one of the largest of our industries. The doom of the liquor industry was sealed more through its crookedness and bad influence than through the actual nature of its product.

Now the balance has swung the other way. A most radical anti-liquor faction considers itself the backbone of the Dry element, and has adopted tactics as crooked and intolerant as those formerly charged to the industry it so bitterly opposed. Stool-pigeons, bribery and under-cover agents exemplify their methods, in many instances, of obtaining evidence in their cases. The zeal and influence of this faction have even attained murderous propensities, as displayed by their indorsement of the distribution of poisoned alcohol which they hope, and with good reason, will eliminate liquor drinkers.

It is true that an Amendment to the Constitution has never been repealed, but it is also true that a preponderance of public opinion can create or abolish laws to suit the occasion. If the practices of certain Prohibition enforcement elements, backed by powerful and destructive radical anti-liquor groups, continue it will not take long for the public to remove what it considers a vicious evil.

The Anti-Saloon League and other influential drys should endeavor to as-

sist enforcement through legal, if not humanitarian, means and not employ such measures which are worse than those ever used by the pre-war liquor interests whom they so intensely scoriated and finally crushed.

Good Work

The Los Angeles Police are to be highly commended for their quick extermination of one of the most dangerous criminals that we have ever had in this part of the country.

A vicious desperado, "Mile-Away" Thomas, has been mixed up with every conceivable kind of crime, but has been shrewd enough, through wit or influence, to prove alibis in each case and, consequently, has always slipped out of the grasp of the law. A man who, among other violent criminal acts, will break into a place with the intent not only to rob, but to murder upon the slightest provocation, should be removed permanently for the good of all of us. It is too late to educate him. Such a removal was accomplished very satisfactorily by police officers last week, but not until Thomas tried to kill them.

It has been reported that his former associates have threatened to get the police officers who shot him. If this is a report started by some half-wit reporter for sensationalism the matter can be forgotten, but if it is an actuality the police force should ferret out these vicious rats and exterminate them in the rapid and efficient manner in which they took care of "Mile-Away" Thomas. The public owes these three officers a debt of gratitude for their excellent work in behalf of our common safety.

Radio Topics of the Day

A Weekly Review of Radio News, Thought and Opinion

CROSBY, KENT AND FRESHMAN REJECT RCA LICENSE

The Radio Corporation of America, as reported last week, is offering patent-licenses under a royalty-paying basis to the independent radio manufacturers. So far, Zenith, All-American, Radio Receptor, and Splitdorf have accepted, and can now manufacture under all of the patents held by the RCA.

It is a significant fact, however, that three of the leading and largest set manufacturers in the world have rejected the proposition. Atwater Kent, Powell Crosby and Freshman apparently are of the opinion that an RCA license is unnecessary to them.

STATIONS PREPARING TO ABANDON CITIES

A development of the past week, due to a policy of the Federal Radio Commission that concessions are more likely to be granted to stations where population is less dense, is that numerous broadcasters are contemplating the removal of their stations from the larger cities. That this will be the trend has been very clearly indicated and the next six months preparatory to the broadcasting season of 1927-28 may witness an exodus from the metropolitan centers.

Otherwise an intimation has been thrown out by the Radio Commission that if broadcasting stations in the more congested centers like New York and Chicago do not yield gracefully to suggestions of the commission to divide time where it seems necessary, an ex-

cellent opportunity will be given to them to fight it out among themselves. Once a tentative assignment has been made, they will be told that that is all the room there is and to make the best of it.

COMMISSION ISSUES PERMITS TO ALL

On April 23rd the sixty days of grace granted all broadcasters in which to prepare and file their applications for new station licenses expired. The commission has issued temporary permits to all stations from which applications have been received, permitting the great majority to continue operation on the same wave-length and power as heretofore. Some changes have been made; the Canadian channels have been cleared of U. S. pirate stations, these stations being assigned new frequencies; in some cases power has been reduced in congested areas. No real improvement will be noticeable, however, until the Commission is able to make a sweeping rearrangement of wave-length, power and hours of operation.

The public is requested to be patient. With seven hundred and more individual cases to be given careful consideration, the Commission cannot hope to offer satisfactory relief immediately,—it will take time.

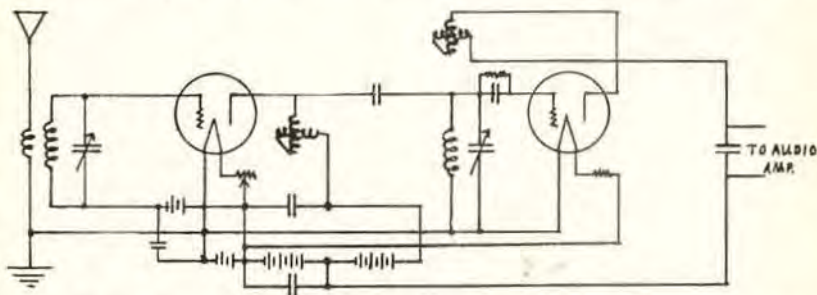
It is imperative that the listening public, the broadcasters and the radio industry as a whole keep faith in the Federal Radio Commission;—be patient in the belief that these men will do their best for the good of radio and us all.

True Cascade Regeneration

E. K. HAYES & V. M. BITZ*

Regeneration is the highest form of amplification known to the Radio Science, therefore, the more regeneration we can use in a receiver, the more efficient it will be. Hundreds, yes, thousands, of experimenters and many radio engineers have tried to "cascade" regenerative circuits, but to the writers' knowledge no practical method has previously been developed which can be used by the layman, and we have no information of anything being published on true cascade regeneration, that is,

rules can be laid down for this as individual layouts, tubes, etc., have such varied characteristics. The detector is a conventional regenerative circuit using a plate variometer inductively coupled to the grid coil. With some audio transformers it may not be necessary to use any capacity across the primary to make the detector oscillate. Should it be necessary, it may be connected either across the primary of the audio transformer, or from the plate terminal of the transformer to positive filament.



the use of two or more regenerative circuits without a blocking tube or other apparatus to isolate the circuits.

A volume could be written about the circuit herein described, but due to lack of space, only the salient points will be treated. Use a loosely coupled antenna for two reasons—gain in selectivity and lack of "holes" in regeneration, due to absorption effect of antenna. Use 90 volts on the plate and $4\frac{1}{2}$ negative C on the grid. Use a 1 mf. by-pass around the C battery, and 1 mf. from the 90-volt lead of the plate variometer to positive filament. Couple the R.F. tube to the detector through a coupling condenser of from 2 to 10 mf. Some experimenting may be necessary to determine the right degree of coupling. No arbitrary

The effect in either case on regeneration and transformer characteristics is practically the same. Use good audio equipment if you want quality. General Radio Variometers are recommended, and the B. T. Micro-mike fills the bill for the coupling condenser. Standard apparatus may be used elsewhere.

This is the first time the writers have permitted this circuit to be published, and they sincerely hope it will be of benefit to the many experimenters who have recognized the possibilities of cascade regeneration, but have had nothing in the way of precedent to work on.

This circuit makes an excellent tuning arrangement for a super heterodyne, and possibly in a later issue the writers will describe a complete heterodyne circuit which is the last word in sensitivity and selectivity.

*Laboratory of Radio Standards.

TREAT YOUR SET TO THE BEST—CALL WE. 9065

New Selective Power Quality

LESTER PORTABLE

*The Set That Gets Portland
on Loop*

6-Tube with Power Tube. Single-dial control, best parts used—Kellogg, Acme, Frost, Carter, Utah or Baldwin, Cunningham, Sterling meter; 37 pounds full weight.

COMPLETE

\$89⁵⁰

WHY PAY MORE

This Low Price is Limited

Stewart-Warner
Blue Ribbon Dealer Sales
and Service

The Distance Getter
Let Us Prove It

Set \$52.00—Terms

**Preston's Permanent
Ground for Distance**

*Real Quality and Selectivity
on any set.*

LESTER RADIO

(Since 1920)

Service - Open Evenings

452 South Broadway—MUTual 0871
109 N. Broadway—WEStmore 3014
LOS ANGELES

WGY to Conduct Short Wave Tests

Two 24-hour transmission tests will be made by radio engineers of the General Electric Company on short wave transmitters. Observers, located throughout the world, will co-operate in making reports on signal strength and clarity in daylight and dark of the various transmitters. The tests will be held on Saturday, May 28, 12 o'clock noon until next day.

The transmission of music and speech will be on station 2XAF, 32.77 meters, and station 2XAD 26.8 meters, on May 28. On the following Saturday 22.02 and 32.77 meters will be used simultaneously.

It is possible that both transmitters will not be heard at the same time. For example, 2XAF has been most effective in broadcasting during darkness and the greatest distances have been obtained over areas entirely in the dark zone. The recent successful rebroadcasting of 2XAF's signals by Australian stations occurred at about 6 p. m., Australian time, of a program which originated at the studio of WGY at 5:30 a. m. Station 2XAD, operating on 22 meters, has proved a more reliable station for European rebroadcasting when part of the intervening territory was in the daylight zone. These tests are conducted for the purpose of getting fairly reliable data on the comparative value of the various transmitters in daylight and darkness.

**Burned-out Audio Transformers
Repaired—\$1.50**

SPECIAL PRICE IN QUANTITY -

A. W. COOPER

1315½ W. 39th St. Los Angeles, Cal.

Picked Out of the Air

By HEARL LA VERN CROWTHERS

A lazy body is only as lazy as its mind.

If you salve your conscience with a lie, it only makes it itch worse.

A good foundation is absolutely essential for any structure built upon it.

Money makes the world move, but for Pete's sake, where does the money come from?

Tears are the lubricants of misunderstanding and are generally impregnated with carborundum dust.

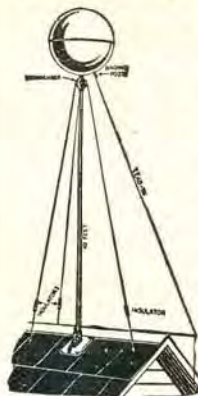
As time goes on we find that being true to an ideal is much more satisfying than being false to a reality.

A person in darkness could not differentiate between the finest pearl and a piece of jet cut and polished in spherical conformity to the pearl.

Webster's definition of a parasite: A plant or animal living in, on or with some other living organism, at whose expense it obtains its food, shelter and the like.

A very lazy man inherited a small ranch. A certain friend in disguise purchased the property for a small sum and immediately began digging a badly-needed water well while the former indolently looked on. A few feet under the ground a very rich vein of gold was discovered.

"Super-Ball" Antenna Gets-It-All



The Super-Ball Antenna is a remarkable invention that marks a new era in radio.

Much of the success of any radio set depends on the efficiency of the antenna.

The Super-Ball Antenna, tested under all conditions, on all radio circuits, is always efficient.

It receives all wave lengths, it serves with any make of receiver, it gets unequalled results, greater selectivity.

It accepts radio frequency signals, it rejects a large part of the interference which long wire aerials collect, it is much more responsive to distance than wire aerials.

The Super-Ball Antenna in a very short period of time has made an unprecedented climb to leadership.

Already internationally known on the basis of merit alone, it has thousands of satisfied users.

It has a non-directional, smooth surface; it has no welded, brazed or soldered joints to impair its efficiency.

You'll never know what your radio set is capable of doing until you connect it with a Super-Ball Antenna.

YAH-R-LANGE

INCORPORATED
Milwaukee, Wis. Detroit, Mich.

Distributed by
Los Angeles
PACIFIC STATES ELECTRIC CO.
ELECTRIC CORP.
PACIFIC WHOLESALE CORP.
RADIO SUPPLY CO.

San Diego
THEARLE MUSIC CO.

Western Representatives

Universal Agencies

San Francisco - Los Angeles
Tel. GRanite 4810

PUBLIC DEMAND

Has caused our Technical Department to adapt our "Tone Filter" for electro-magnetic phonograph reproduction, for use in a radio receiver. This equipment is now available for installation in your radio set.

Radiola Specialists

We make any RCA SUPER-HETERODYNE include in its tuning range the stations between 200 and 230 meters, at a nominal cost. Not an attachment, but a fundamentally sound improvement in the circuit. We have also developed improvements for the Radiola 20.

Makers of the Professional Model Receiver

Laboratory of Radio Standards

E. K. Hayes

V. M. Bitz

2408 W. Vernon—Vermont 6543

Los Angeles, Calif.

An Appreciated Gift

Significant of the growth in importance of radio reception to all classes of people is the fact that an ever-increasing number of high officials are taking an interest in radio, both from the standpoint of the broadcaster and of those who own receiving sets.

The most recent addition to the National family of broadcast listeners-in is Mayor George E. Cryer of Los Angeles, who was recently presented with



an Atwater Kent Model 32 receiver, by A. Atwater Kent, who sent as his personal representative, Mr. R. E. Smiley, Assistant Sales Manager of the Atwater Kent Manufacturing Company to the Pacific Coast, to head the presentation committee.

Assisting Mr. Smiley in the presentation was Ray Thomas, Southern California Atwater Kent Distributor, and L. M. Willis, Pacific Coast Merchandising Manager for the Atwater Kent Manufacturing Company.

The Model chosen by Mr. Kent is the Seven-Tube, One-Dial type, which has proved of such high operating efficiency under all conditions that he unhesitatingly selected it for the Mayor, and placed upon it a gold plate bearing the inscription: "Presented to Mayor George E. Cryer of Los Angeles in appreciation of his interest in radio." The plate bore the personal signature of Mr. Kent.

New Eliminator Tube

One of the most notable achievements in the radio tube field was announced by the Sonatron Tube Company, of Chicago, New York, Detroit, Newark, and Windsor, Canada. With the ever-increasing use of the "B" Eliminator, a special no-flament tube was necessary to supply a keen even flow of rectified current to the receiving set.

The Sonatron Laboratories developed and perfected Type SH-85, a surface-cooled, gas-filled full wave rectifier tube that is designed to work in any "B" Eliminator, which requires a gas-filled no-flament tube.

One of the noteworthy features of the Sonatron SH-85 in the cone shape corrugated cap inside the tube. This special corrugated cap keeps the tube at an even temperature, bringing about a surface-cooled area that constantly relieves the tube of excess heat.

Another development in the SH-85 is that it will pass sufficient current to operate any power amplifier tube up to 200 volts, and any combination of tubes that do not consume more than 85 milliamperes. The exceedingly rugged construction of this tube produces a continuous and smooth flow of rectified current at maximum efficiency.

FEDERAL ortho - sonic

DEALERS

Invite You to Hear the "E-10" and Other Popular Models

MODEL E-10

Six Tubes—Wet or Dry Type. Single control without loss of efficiency. Extremely selective. Maximum receiving range. All metal construction. Illuminated scale—acts as pilot light. Perfect control of volume. Brown Mahogany Cabinet, Rosewood Inlay. Without Accessories—\$150.00.



LOS ANGELES

Downtown

Standard Radio Co.
417 W. Pico St.
WEstmore 1560

Hollywood

Glow Electric Co.
5910 Hollywood Blvd.
HOLlywood 4610
Shepherd Radio Service
7562 Sunset Blvd.
GRanite 7482

Southeast

Manchester Radio
Electric Shop
1522 E. Manchester Av.
DElaware 0460

Southwest

The Radio-Electric Shop
1428 W. Santa Barbara
VERmont 7440

GLENDALE

Broadway Electric
(Willard Hellman,
Radio Dept.)
202 E. Broadway
Glendale 3064

LONG BEACH

Kelm Radio Co.
147 E 4th St., at Locust
LONG BEACH 618-329

Radioland Service Co.
734 E. Anaheim St.
LONG BEACH 666-239

LYNWOOD

Lynwood Electric Co.
203 N. Long Beach Blvd.
COMPTON 583

OCEAN PARK SANTA MONICA

Pier Avenue Radio Co.
142 Pier Ave.
SANTA MONICA 61094

PASADENA

Thomas & Sommerville
41 N. Broadway
TERRACE 0815

ATWATER KENT RADIO

Good News for Atwater Kent Owners! The Pooley Armchair Model Cabinet, with Built-in Speaker, shown on the opposite page, can be bought without the receiver, and your set fitted into it. Drop in and ask one of these Authorized Dealers to tell you more about this Latest Luxury in Radio:

LOS ANGELES

Downtown

Harry W. Harrison, Inc.
848 S. Flower St.
TRinity 9777

Martin Music Co.
734 S. Hill St.
TRinity 9621

Starr Piano Co.
630 S. Hill St.
TRinity 3905

Stone Elec. Supply Co.
710 W. Pico St.
WEstmore 5149

Uptown

J. M. Loge
986 S. Western
EMpire 8177

Highland Park

Thale Radio Shoppe
103 S. Avenue 57
GARfield 9613

Hollywood

Herbert L. Jackson
5117 Hollywood Blvd.
Olympia 2555

Wesholly Radio Service
7406 Melrose
ORegon 4702

Wilshire

Bimini Electric &
Radio Co.
109 S. Vermont Ave.
DRexel 2990

South

Los Angeles Music Co.
4410 S. Broadway
AXridge 5479

Southwest

Chapman House
Sales Co.
4379 S. Figueroa St.
AXridge 8382

Collinge Hardware Co.
3425 S. Vermont Ave.
BEacon 7025

C.D. Tanner Co.
4154 S. Vermont Ave.
VERmont 7905

Southeast

Central Electric Co.
3802 Central Ave.
HUMBolt 2337

Hill Electric Co.
2705 S. San Pedro St.
HUMBolt 1138

GLENDALE

Glendale Music Co.
(Salmacia Bros.)
118 S. Brand Blvd.
Glendale 90

PASADENA

Brady-Patterson Co.
817 E. Colorado St.
Terrace 5155

Hancock Music Co.
331 E. Colorado St.
Wakefield 3171

SOUTH PASADENA

So. Pasadena Elec. Co.
1509 Mission St.
ELiot 2088
Terrace 5829-J

SAN PEDRO

McWhinnie Electric Co.
(K F V D)
1817 S. Pacific Ave.
San Pedro 375

"Perfect At a Whisper — Perfect At Full Volume"

ATWATER KENT RADIO

and

Pooley Armchair Cabinet

"Simply Beautiful—Beautifully Simple"



There is a Pooley Cabinet for every model Atwater Kent radio.

Armchair Model Pooley Cabinet, with Built-in Speaker
\$80

Equipped with Model 30 Atwater Kent Radio and Built-in Speaker
\$170 (less Accessories)

RAY THOMAS INC.
Atwater Kent Distributor

1248 S. Hope St. WE 6334
LOS ANGELES

THE TROUBLE SHOOTER



ASK K.G.O.
The Answer Man

KENNETH G. ORMISTON
Technical Editor



A reader who owns a Silver-Cockaday set has discovered that there is no grid condenser or grid leak in the set, and is worried for fear the assembler left out some vital parts. Radio Doings is often appealed to in times of great stress like this.

The detector tube in the SC-II functions with a C battery furnishing $4\frac{1}{2}$ volts of negative grid potential, instead of the customary grid condenser and grid leak. An understanding of the characteristics of the vacuum tube is necessary to fully understand just how this is possible, but a brief explanation will be given here.

The action of the tube is to cause variations in the plate current by varying the potential of the grid. This action is not uniform, in other words, the characteristic curve is not a straight line, as equal changes in the grid potential do not produce equal changes in plate current throughout the whole operating range. When a tube is operating as an amplifier it is most essential that the conditions are such that the variations of the grid do produce equal changes in the plate current, hence the B and C voltages must be so balanced as to bring about that condition. The tube then performs on that portion of its characteristic which is a straight line.

But for rectification, when a tube is used as a detector, just the opposite is true. We must operate on the sharply curved portion of the characteristic curve, and this is accomplished by adjusting the relation between grid and plate voltages. The potential of the grid may be maintained with respect to the plate potential by the use of a grid condenser and leak, or by means of a C battery.

While the grid condenser-leak combination is standard practice it is more subject to overload on strong signals

than the grid-biased type of detector.

The handling capacity of the latter type is very great and does not introduce distortion on very strong signals.

Form a study of the characteristics of a tube we see that whether a tube operates as a detector (rectifier) or amplifier is dependent upon the relation between the voltages applied to the grid and plate. For example, the standard 201-A tube, with 90 volts on the plate and $4\frac{1}{2}$ volts on the grid will function as an amplifier, while with 45 volts on the plate and $4\frac{1}{2}$ volts on the grid will operate as a detector. In the first case equal grid variations caused by an incoming signal will produce equal or proportionate variations in plate current. In the second case, because of the different voltage relationship, equal grid variations do not cause equal or proportionate changes in plate current and therein lies the ability to rectify. The "why" of this involves the use of curves and cannot be entered into here. It is a very interesting study,—the theory of the vacuum tube.

That Audio Howl

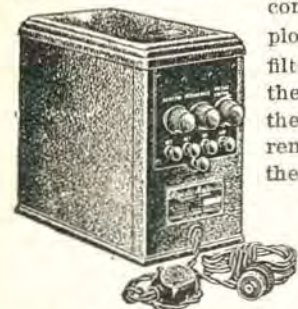
While most of our readers are familiar with the howl which builds up in the loud speaker when the speaker's location is such that it is able to impart vibration to the tubes, there are many who are still bothered by this effect and write for advice.

The howl is usually caused by the speaker and tubes. Either through the air waves which are set up in reproducing the signals, or in vibration through a table top or other medium between the speaker and set, vibrations reach the tube elements and shake them slightly. This in turn causes plate current variations, which is amplified and fed to the loud speaker, when the

(Continued on Page 23)

Majestic B Eliminator

One of the most successful of the Raytheon type of eliminators is the Majestic. The very heavy chokes and condensers employed in the filter iron out the ripples in the rectified current passed by the tube, and variable controls afford a close and noiseless regula-



tion of all the voltage taps.

In addition to the individual controls on each tap, the "Master B" is equipped with a variable control which raises or lowers all the voltages together, while on the "Super B" a two-way switch accomplishes the same effect.

The units are of very rugged construction and capable of withstanding the hard service to which a heavy-duty eliminator is subjected.

Trouble Shooter

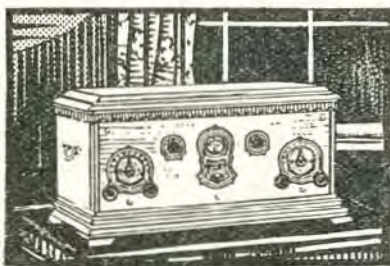
(Continued from Page 22)

whole process repeats itself and the howl grows in proportions. It is the same sort of reciprocal feed-back that takes place when you put the ordinary telephone receiver close to the mouth-piece of the phone. A loud whistling sound builds up. It's like a dawg chasing his own tail.

The trouble can usually be remedied by moving the loud speaker further away from the set, or by replacing the detector tube with one less microphonic. That means one less subject to vibration,—one in which the elements are more rigidly mounted.

Let Us Demonstrate
A STROMBERG-CARLSON
 HEAR PERFECTION IN RADIO REPRODUCTION

*In Your
 Own Home!*



*Without
 Obligation!*

Your present set accepted as part payment on a Stromberg-Carlson.
 Convenient terms on the balance.

The Radio-Art Studio

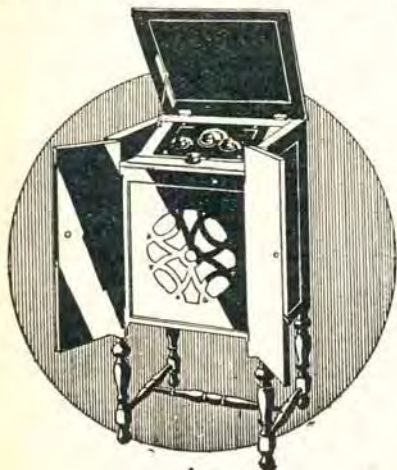
3831 Wilshire Blv.
 Los Angeles

Authorized Dealer
Stromberg-Carlson

Washington
 4095

The Falck

NO BATTERY
RADIO



for
**TONE
BEAUTY
ECONOMY
SIMPLICITY
SELECTIVITY
PERMANENCE**

Run-down batteries are *unknown* to Falck owners. When your friends drop in, your radio is always ready. And besides, there are no trickle chargers, acids or liquids of any kind to bother with. This low cost up-keep makes the Falck the friend of the pocketbook as well as the ear.

Hear the Falck at any authorized Falck dealer, or phone M^Utual 1724 for free demonstration in your home.

\$150 complete

(Slight extra charge for cone)

FALCK RADIO SALES CO.
1260 W. Second St., Los Angeles

New Set Tester



The Weston Electrical Instrument Corporation, Newark, N. J., manufacturer of electrical measuring instruments has developed a Radio Set Tester (Model 519) for the especial use of the radio service man and

for use by dealers in shooting trouble.

This testing set will measure the various voltages used in a radio set, both of the battery terminals and at the tube sockets; for testing continuity and condition of circuits, and for testing the tubes under the same condition as exists when in their sockets. It will make all tests by using the regular batteries or battery eliminator used in the radio set, with no change in connections, so that no auxiliary batteries are required.

The instrument mounted in this set has three voltage ranges of 200, 80 and 8 volts and a current range of 20 milliamperes. The voltage ranges have a resistance of 1000 ohms per volt, which means that full scale deflection is produced with a current of one milliampere. This high resistance makes the testing set suitable for testing radio sets operated either by batteries or battery eliminators.

Weighing only three pounds with adaptors and cables complete, this tester makes an ideal instrument for the service man and does away with the necessity of carrying batteries for making tests.

"I want to buy a step-ladder"

"Yes, sir. For any special purpose?"

"To kiss my girl. She just had her face lifted."

The Cover Picture

The lads on the cover are Russ Wildey and Billy Sheehan, the far-famed Ray-O-Vac Twins, who will arrive in Los Angeles May 3rd, on their joy-spreading jaunt and will be first heard over KHJ. These high-powered entertainers have been riots of joy wherever they have appeared, either in person or over the air.

They can be serious, too—very serious. When that mine disaster befell Wilburton, Oklahoma, the Ray-O-Vac Twins put all else aside and for three hours sat in front of the microphone asking for aid for the sufferers. They raised \$31,000 in 3 hours!

From their early "vodevil" days they learned the secrets of pleasing an audience, and now have somehow mastered the art of putting that same magnetic personality into their microphone work. That's art!

The boys are on tour for the French Battery Company of Madison, Wisconsin, but do no advertising; simply being known as the Ray-O-Vac Twins.

Mr. P. Fenney, formerly associated with Kieruluff & Ravenscroft Company of San Francisco, is now connected with the H. Earle Wright, Inc.

DX Hounds, Attention

Improve Your Reception
with the

N. H. (BOB) ROBINSON

Blue Vitriol Ground

Installed and hooked to your set for

\$8.50

I DIG THE HOLE!

PERMANENCY GUARANTEED

On Display at STANDARD RADIO CO.,
417 W. Pico St.—WEStmore 1560

Made by

N. H. (BOB) ROBINSON

2618 N. Main St., Los Angeles CA. 7310

"Steel Spire"

THE
PERMANENT AERIAL
SUPPORT



Stands by
itself in

Strength

Neatness

Durability

*Beauty
And Easy
Installation*

*No Fire
Menace*

"Steel Spire" is a steel welded support, with three legs, one leg being adjustable; makes a quick and neat attachment to any pitch of roof. Painted with a non-corrosive aluminum paint, which "Blends with the Sky." No guy wires. Once installed, there will be no sagging of antenna and will insure you the best reception possible at all seasons.

Bring in that summer reception with first class aerial equipment that will add to the appearance of your residence.

Landlords! The "Steel Spire" will pay for itself in the savings of roof repairs.

6 ft., \$5.75 each
9 ft., 7.75 each
12 ft., 9.75 each

ASK YOUR DEALER

Or Phone for Information to
Los Angeles Radio Co.
2135 West Pico
BEacon 7431

Barker Bros.

7th & Figueroa ME. 1840
LOS ANGELES

Manufactured by

Pacific Aerial Company

1385 Obispo Ave. Long Beach, Cal.
Phone 345-115



By CAREY PRESTON RITTMEISTER



"C. P. R."

It's most interesting to learn that, according to official figures in 1924, there were in the United States eight women with incomes of more than a million dollars. Women heading families reported incomes aggregating half a billion, while the total income earned by all other women was nearly two billion. And no less a person than Elbert H. Gary, head of the steel corporation, states that women have always been better than men in morals, persistent endeavor, honesty and determination, and Mr. Gary has had a broader experience with persons in industrial life, both in clerical and executive positions, than any business leader in the country. It is his belief that men and women should be allowed to work where they please, and that unless this is granted no country will prosper. And Mr. Gary also states that if given an equal chance with men, the man fails more often than the woman.

During the war the door to commerce and trade in the United States was thrown wide for women to enter, and it had to remain open to them because of the remarkable success attained. Possibly the statement made by a noted psychologist on the subject explains some of their success. He says, that while man might be called the "intellectual seeker," woman is the "intuitive finder."

It has always been acknowledged generally by physicians, nurses and dentists that women are capable of endur-

ing more pain and suffering than men, and the annals of history are full of tales of remarkable courage shown by women. I recently read a thrilling account of a woman 46 years old who was lost for 33 days in the wilds of British Columbia, more than half the time being without food, enduring the misery of nights and days in the rain and repeated blizzards. When her feet became sore she padded them with leaves, and one day the leaves gathered proved to be poisonous and infection added pain to her misery. When found, the clothes she wore were in tatters, the tops of her shoes gone and the soles tied on to her feet; but her mind was clear and she still had the strength to stand and be photographed.

Shin Meat—En Casserole

A meat dish that is very tasty and economical is made from two pounds of shinbone, half a cup of onion; two cups carrots; one cup of diced celery. Cut the meat from the bone in 2-inch pieces; remove the marrow from the bone. Put part of the marrow into bottom of casserole, then half the meat, half vegetables, the rest of the meat, seasoning of salt and pepper and marrow over the top. Place in hot oven 20 minutes, covered. Then add 1 cup boiling water, cover, reduce heat and let bake slowly 3 hours, or until tender, in bottom of oven. Once or twice water must be added. When the meat is tender, add the flour, which has been mixed with a little cold water.

Raspberry Delight

A simple, economical and delicious dessert. Cut large, sound oranges in halves and scoop out the contents of the orange very thoroughly with a spoon;

(Turn to Page 29)

Koo-Koo KolyuM

By HAL DAVIS

Extract from Friend Harry Carr's "Lancer" kolyum in the *Los Angeles Times*: "As an exilized Napoleon, a certain melancholy and dramatic interest enfolded him."—Condolences, Harry; the linotypers do me dirt sometimes, too!

Sign on South Flower Street, showing, 'twould seem to us, the height of business enterprise: "FOR RENT—SLEEPING PORCH."

Another sign seen on an old fruit stand, demonstrating English as she is spoke on Alameda Street: "For SALA thees STAND."

One of our friends in Santa Barbara, Cal., who signs himself "Barney Google," was much impressed with Mr. Westbrook's letter in a recent issue concerning reception without an aerial, and writes us that he is "Regularly receiving WOE and NIL not only without an aerial, but without even a set. Reception is at all times excellent."—Good work, Barney! Does Spark Plug enjoy the Radio, too? Don't tell us, now, that it's his "mane hobby!"

Teacher: "Who can give me a sentence using the word 'Avaunt'?"

Little Abie: "Avaunt rot Avaunt ven Avaunt it."

THAT HIGHER EDUCATION!

A charming young co-ed at U. of Cal., Southern, contributes these modern titles for old songs:

- "Aunt Dinah's Necking Party."
- "The Old Folks at the Night Club."
- "Massa's in the Cold, Cold Cellar."
- "The End of a Perfect Jag."
- "Sweet and Low Cut."
- "Bring Back My Hubby to Me."

Mrs. J. L. Lewis, of Orange, Cal., sent us a wonderful little poem of appreciation, mentioning the various departments of "Radio Doings" which she enjoys, including "Even Koo-Koo Kolyum." Thanks no end, Mrs. Lewis;—we'll be big-hearted and overlook that "Even."



Cruise in the Wake of the Pirates

LET your thoughts take you back to the land of dreams where Romance rides swiftly on the wings of adventure. Drink deeply in the enjoyment of your favorite Radio program as your thoughts cruise the Spanish Main.

The Enchanter Radio Reproducer will help you to this solace and comfort. The design alone is sufficient incentive, but the perfect tone—reproduced in its full tonal quality and color—will give you rich, mellow reproduction without the usual interruptions and harshness.

The Enchanter combines an art metal design—Spanish motif—of exceptional beauty and decoration, with perfect radio reproduction. Gives you all that a good speaker can, plus that wonderful invitation to cruise with your thoughts.

BAKER-SMITH CO., Inc.

Exclusive Distributors
New Call Bldg. San Francisco

THE ENCHANTER
CONE SPEAKERS
Highest grade reproducers



OCEAN PARK + SPLITDORF = DX

DX Club:

I purchase the Radio Doings every week. In your issue of April 17-23 I saw where a Splitdorf Radio owner would like to hear from another Splitdorf owner. I have done pretty good in the last 3 months, besides all local and Northern California stations, I have brought in on my Splitdorf Loud Speaker: WLIB, WEA, WENR, KOIL, WEBB, PWX, WSM, WGES, KVOO, WOAI, KMOX, WTAM, WOC, WHO, KOMO, KMO, KHQ, KEX, KSL, KFOA, KFKX, KGW, KOAR, KOA, KFUH. I have brought in several other Eastern stations, but these I have written to and have my letters and cards to verify my reception from them. I use a 75-ft. antenna, about 35 feet in the air. I think the antenna has a lot to do with distance getting.

E. F. RICHARDSON,
236 Bicknell Ave.,
Ocean Park, Calif.

SPLENDID WORK, FRANK!

DX Club:

Here's some DX to put on your DX Club page: I have verification from WORD, WLIB, WGN, WJJD, WJAZ, WSWS, WLS, WSBC, WBBM and WOK in Chicago. Other eastern stations are CFCA, Toronto; WYW, KDKA, WCCO, KVOO, KFKX, KFAB, KFEQ, WOW, CZE, KFVR, KMOX, WDAF, KOIL, CFNC, and KTHS.

These were all heard on a home-made Browning Drake.

I received absolute verification of a whole hour's program from 4QG, Brisbane, Australia. They came in fine on the phones. They are on every morning, from Monday to Friday, until 4:30 a. m., and until 3:30 the rest of the week. They are 5000 watts and are owned by the Queensland Radio Service.

Yours truly,

FRANK PARKER,
2137 Vicksburg Ave.,
Oakland, Calif.

HOME-MADE ROBERTS

DX Club:

I have read practically every issue of Radio Doings during the past year and have enjoyed especially the DX Club page. I have a home-made Roberts two tube set, and although my record is not as good as some, it is pretty good for a two-tuber. I have received 163 during the last year, 76 of them being over 1000 miles away and 12 of them over 2000 miles. Besides 18 in Illinois, I have had 5CL, 3LO, 2BL, WJZ, WMAK, WGHB, KDKA, WEMC, WSMB, WHAD, CYJ, etc. I use an aerial 200 feet long, with a couple of dry cells deep in the earth for a ground.

The long aerial broadens tuning, but it certainly brings in the distance. I use a fixed condenser in series with antenna to sharpen tuning on locals. Would like to hear from other DX fans and compare notes.

JOHN B. IRWIN,
2921 Regent St.,
Berkeley, Calif.

STILL ANOTHER "20"

DX Club:

Would like to contribute my list of stations received on my Radiola 20, equipped with a Philco Socket Power. Haven't had my radio very long, but think I get very good results, as you will see. Let's hear from more of the modest 20 owners. Sure can't wait to get my copy of Radio Doings every week, as I think it's great.

RALPH GRIFFIN,
1063 So. Lorena,
Low Angeles, Cal.

(Note—Mr. Griffin's list includes many of the Chicago stations, several Canadians, and withal is a very enviable record.)

Tutored by Radio

"Broadcasting is the primary reason for the general uplift of the masses from the so-called 'low brow' music to the higher classics," declares Lodovico Tomarchio, world famed dramatic tenor, who has recently taken permanent quarters in Los Angeles.

"Almost from the very first moment, when I had the honor of singing the tenor role in one of Fortune Gallo's first radio operas—three years ago—I have made a study of the influence of the better radio broadcasting on the people as a whole. Many instances and examples might be quoted to prove my assertion, but perhaps the best example is an experience I had yesterday:

"A lad from the country came into my studio and asked for a voice trial. He possessed a true tenor robusto, in the making—a rare find indeed, even in this land of sunshine and exceptional native voices. The big surprise, how-

ever, came when I asked him to sing a song for me and be brought out Verdi's 'Celeste Aida' and a heavy ballad.

"On questioning him, I found that his taste for these works had been cultivated night-by-night, for a period covering several months of listening-in, and that his sole instructor had been the radio!"

Woman's Page

(Continued from Page 26)

put the shells into cold water for several hours to harden them, meanwhile making a jelly of prepared raspberry gelatin.

Take out the skins, let them drain, put the jelly into the oranges and place in the refrigerator to chill; when the jelly is set, cut them into quarters with a sharp knife; arrange in tall glasses. Garnish around the bottom of each glass with fresh berries, put in the center some stiffly whipped cream flavored with vanilla. Serve at once.

Send for this new folder. It's Free describing Preston's Radio Ground —

We have prepared a new folder describing Preston's Permanent Radio Ground. This will be sent to you free, for the asking. In it are reproduced several letters from owners of the Ground and engineers who have tested it . . . it will interest you.

And . . . a word of warning. The Preston Ground is being widely imitated. Several imitations who have examined have absolutely no claim to permanency.

Information about the genuine Preston Ground and the money back plan under which we sell it is FREE. Write today.

Radio Test Laboratories

3036 Fifth Avenue

Los Angeles, Calif.



Make Your RADIO Perform Like Mr. Ahern's Did!

The installation of C. H. Preston's Permanent Radio Ground, formerly known as the "DX" Radio Ground, to your present radio receiver will so surprisingly improve its performance that you will hardly believe it's the same set.

The Preston Permanent Radio Ground is a positive and efficient ground connection that merits investigation by every radio owner. It will increase volume, better selectiveness and facilitate sharp tuning, as well as eliminate all extraneous noises within the receiver that are due to defective ground connections.

In fairness to you, let us say that we know of several imitations of Preston's Ground now on the market . . . products emanating from irresponsible sources . . . that are claimed to be as good as the Preston Ground. When buying, look for C. H. Preston's signature on the label, and remember this . . . the Preston Ground is guaranteed permanent . . . it is sold on a guarantee of satisfactory performance . . . a guarantee that is backed up by a manufacturer with a reputation gained by many years of dealing with customers on a fair, business-like basis.



Price \$8⁰⁰

Notice to Dealers

Before stocking with grounds be sure you know with whom you are dealing. Lack of responsibility of the manufacturer from whom you buy does not relieve you of responsibility toward your customers. They look to you for reputable merchandise. You can place your order through your jobber for the genuine Preston Radio Ground and BE SAFE.

UNGAR & WATSON Inc.
National Distributors
1366 So. Figueroa St. Los Angeles
THE SEROY CO.
Distributors for No. Calif. Oregon & Washington
122 Broadway - Oakland, Calif

CATALINA ISLAND CALIFORNIA

THE ALL YEAR RESORT



I. H. Patrick, President
Walter Banning, Vice President
D. M. Kessell, Vice-President and Gen'l Manager

WILMINGTON HEADQUARTERS
Avalon, Catalina Island, California

Wm. Wallace, Jr., Chairman of the Board
-April 10th, 1927-

Mr. C. H. Preston,
Radio Engineer,
11226 Ventura Boulevard,
Los Angeles, California

J. N. Stewart, Vice-President and Traffic Manager
Dwight F. Estess, Secretary and Treasurer
T. H. Stewart, Gen'l. Pass. Agency Agent

Dear Mr. Preston:-

Excuse the familiarity, but cannot help but feel that I know you after purchasing one of your "PRESTON DX GROUNDS" and installing same at my residence the other day, and securing such wonderful results.

I followed the directions on the slip covering installation, which was simple for an amateur to follow. With my 6 tube Freud-Eismann circuit Neutrodyne, the best results were obtained by leaving my aerial on and connecting your ground lead-in to my ground post. Had very good results, however, by just using your ground on the aerial post alone. Made my set a little too hard to tune that way, too selective, it seemed.

Promptly, it seemed to my little wife and I that reception was cleared up considerably. She is very enthusiastic about it.

First night didn't have anything wonderful to brag about, but noted your slip said within seven days it would reach its maximum efficiency, so gave it a fair trial and put off trying until the next night.

The next night - wow! She made my set like new. Very selective and clear. Within 15 to 20 minutes at 9 PM I tuned in quickly and clearly on the loud-speaker; the Pittsburg Post - Vancouver, B.C. - 2 Denver stations; Salt Lake City - 2 Oakland stations, several San Francisco; Oklahoma City - Pocatello, Idaho and up and down the coast from Inglewood right along. I expect to get stations like the old days in the near future with this ground. It MADE my set over. Thought it was getting "hay-wire" and about to discard it - NOT NOW!

Eight of my Island friends ordered your grounds because of my results and am sure many more will. Success and good luck. Couldn't help writing you. If it proved a "dud" would have written you a different type of letter.

Sincerely

J. Mickey Ahern
Secretary Go V. Frey. & G. Mgr.

KFXB Night at KFWO

32



A number of the staff and artists of Los Angeles Station KFXB recently were the guests of KFWO, Catalina Island. Back row, left to right—Morey Dorr, Jack McDeviatt, George Kohler, Baron Keyes, Ditra Flame and Little Eddie Barnes. Front Row—Jimmie Belderos, Ann Morris, Ruth Michaelson, Little Eva Barnes, Lou Morris, and Mrs. Little Eddie Barnes. Foreground—None other than Major Lawrence Mott, owner of KFWO.

Radio Doings

April 30

SUNDAY TIME TABLE

ALL TIME TABLES ADJUSTED
TO PACIFIC TIME
(X) Indicates Station Is On the Air

10-12 A.M.	12-2 P.M.	2-4 P.M.	4-6 P.M.	STATIONS		6-8 P.M.	8-10 P.M.	10-12 P.M.																																			
10.00-10.30	10.30-11.00	11.00-11.30	11.30-12.00	12.00-12.30	12.30-1.00	1.00-1.30	1.30-2.00	2.00-2.30	2.30-3.00	3.00-3.30	3.30-4.00	4.00-4.30	4.30-5.00	5.00-5.30	5.30-6.00	CALL	Wave Length Meters	Power In Watts	STATION	6.00-6.30	6.30-7.00	7.00-7.30	7.30-8.00	8.00-8.30	8.30-9.00	9.00-9.30	9.30-10.00	10.00-10.30	10.30-11.00	11.00-11.30	11.30-12.00												
SOUTHERN CALIFORNIA																																											
	X	X						X	X	X	X					KELW	535	250	Burbank																								
															X	X	KGEF	517	1000	Los Angeles					X	X	X	X	X	X	X	X	X	X	X								
								X	X								KFI	467	4000	Los Angeles	X	X	X	X	X	X	X	X	X	X	X	X	X	X	X	X							
			X	X													KFCR	413	50	Santa Barbara						X	X																
X	X	X	X	X													KHJ	405	500	Los Angeles				X	X	X	X	X	X	X	X	X	X	X	X	X	X						
																	KFBC	380	50	San Diego				X																			
																	KMTR	370	500	Hollywood	X	X	X	X	X	X	X	X	X	X	X	X	X	X	X	X	X	X					
X	X	X	X	X	X	X	X					X	X	X	X	X	KFXB	353	1000	Los Angeles	X	X	X	X	X	X	X	X	X	X	X	X	X	X	X	X	X	X					
X	X	X	X				X	X	X	X							KNX	337	750	Los Angeles				X	X	X	X	X	X	X	X	X	X	X	X	X	X	X					
																	KPSN	316	1000	Pasadena				X	X																		
X	X	X	X									X	X				KFWC	295	200	San Bernardino									X	X	X	X	X	X	X	X	X	X	X				
	X	X	X	X						X	X						KTBI	294	750	Los Angeles	X	X	X	X	X	X	X	X	X	X	X	X	X	X	X	X	X	X					
	X	X	X	X						X	X	X	X				KFSG	275	500	Los Angeles				X	X	X	X	X	X	X	X	X	X	X	X	X	X	X	X				
																	KWTC	263	250	Santa Ana				X	X																		
		X	X														KMIC	261	500	Inglewood				X	X	X	X																
		X					X	X									KFWB	252	500	Hollywood								X	X	X	X	X	X	X	X	X	X	X	X	X			
							X	X									KFSD	248	1000	San Diego																							
X	X	X					X						X	X	X	X	KNRC	238	1000	Santa Monica	X	X	X	X	X	X	X	X	X	X	X	X	X	X	X	X	X	X	X	X			
		X	X	X			X	X	X	X	X	X	X	X	X		KFON	233	750	Long Beach	X	X	X	X	X	X	X	X	X	X	X	X	X	X	X	X	X	X	X	X	X		
	X	X	X	X													KPPC	229	50	Pasadena				X	X	X	X																
																	KFQZ	226	500	Hollywood						X	X	X	X	X	X	X	X	X	X	X	X	X	X	X			
				X	X								X	X			KFWO	211	250	Catalina	X	X	X	X	X	X	X	X	X	X	X	X	X	X	X	X	X	X	X	X			
		X															KFVD	205	500	Venice	X	X	X	X	X	X	X	X	X	X	X	X	X	X	X	X	X	X	X	X			
NORTHERN CALIFORNIA																																											
X	X						X	X	X	X							KPO	428	1000	San Francisco	X	X	X	X	X	X	X	X	X	X	X	X	X	X	X	X	X	X	X	X			
	X	X	X	X													KYA	400	1000	San Francisco					X	X	X																
	X	X	X				X	X	X								KGO	381	4000	Oakland				X	X	X	X	X	X	X	X	X	X	X	X	X	X	X	X	X	X		
X	X	X	X	X													KQW	338	500	San Jose					X	X	X	X															
X	X	X	X	X													KTAB	303	1000	Oakland					X	X	X																
												X	X	X	X		KFRC	268	500	San Francisco	X	X	X	X	X	X																	
		X	X														KFUS	256	50	Oakland					X	X	X																
X	X																KRE	256	100	Berkeley																							
				X	X	X											KFWI	250	500	San Francisco				X	X	X	X	X	X	X	X	X	X	X	X	X	X	X	X	X	X		
NORTHERN AND WESTERN STATES																																											
X	X	X	X				X	X	X	X	X	X	X	X	X		KGW	491	1000	Portland					X	X	X	X	X	X	X	X	X	X	X	X	X	X	X	X	X		
							X	X	X	X	X	X	X	X	X		KEX	447	5000	Portland	X	X	X	X	X	X	X	X	X	X	X	X	X	X	X	X	X	X	X	X	X	X	
X	X	X															CFAC	435	2000	Calgary																							
	X	X															KJR	384	20M	Seattle						X	X	X	X	X	X	X	X	X	X	X	X	X	X	X	X	X	
																	KLZ	384	500	Denver				X	X	X																	
X	X	X	X									X	X	X	X		KOA	322	5000	Denver				X	X	X																	
X	X	X	X	X	X	X											KOIN	319	1000	Portland	X	X		X	X	X	X	X	X	X	X	X	X	X	X	X	X	X	X	X	X	X	
X	X	X	X	X	X	X											KOMO	306	1000	Seattle	X	X	X	X	X	X	X	X	X	X	X	X	X	X	X	X	X	X	X	X	X	X	
X	X						X	X									KSL	300	1000	Salt Lake City				X	X	X	X																
X	X	X															KMO	250	500	Tacoma	X	X																					

Hours Shown as Submitted by These Stations.

B. T. Counterphase for DX: H. A. Everest, 1032 N. Ogden Dr. GR. 9915

WILL SACRIFICE a \$150 a month, well-appointed, two-room office suite
in the I. N. Van Nuys Building, Seventh and Spring
Streets, Los Angeles, for \$100 per month. Lease has one year to run.

Inquire at
RADIO DOINGS

407 East Pico St.

WEstmore 1401

Los Angeles, Calif.

These Single dial Control *Stewart-Warner* Receivers offer genuine radio Value!

Stewart-Warner single dial control receivers have a six-tube receiving circuit of acknowledged efficiency... they have a reputation for tone qualities that is conceded even by manufacturers of competitive products. The Stewart-Warner radio line, in its entirety, is made in Stewart-Warner factories... in this way the performance of each unit entering into the completed product can be matched with the others. The resulting product, under the trade name of Stewart-Warner Matched Unit Radio, is offered to you with the assurance that you will find it to be, in every way, a satisfactory investment.

Any Stewart-Warner dealer listed in this advertisement will gladly demonstrate Stewart-Warner radio in your own home and explain the liberal terms on which it can be bought.

Los Angeles Dealers

ATWATER RADIO & ELEC. CO.
3208 Glendale Blvd.

DEAN K. BARRIS
3100 S. Vermont Ave.

BENSON HARDWARE COMPANY
416 South Broadway.

BIRONG & BUSHARD
1717 W. Adams St.

CALIFORNIA RADIO SHOP
807 South Figueroa St.

CHAPMAN HOUSE SALES CO.
4374-76 S. Figueroa St.

CLIFF'S RADIO SERVICE
2635 Dayton Ave.

DON FINKLE
2207 West Jefferson

A. W. COOPER
1315 W. 29th St.

HARRY SAVOY
828 W. Jefferson St.

HOLLAND ELECTRIC SHOP
5832 Pasadena Ave.

HIDLEY RADIO & BIKE HOUSE
517 South Main St.

INTERPHONE ELECTRIC CO.
5510 Monte Vista St.

LESTER RADIO
109 North Broadway

LESTER RADIO & ELEC. CO.
452 South Broadway

LOVINGER'S MELROSE RADIO
SHOP, 4436 Melrose Ave.

RAY LYON
7119 Compton Ave.

RAY LYON
1439 E. Florence Ave.

MANCHESTER RADIO CO.
1522 E. Manchester Ave.

MOORE RADIO SALES CO.
92nd at Avalon Blvd.

MOHAWK BAT. & RAD. CO.
2115 Sunset Blvd.

NILSSON & NELSON
4320 Avalon Blvd.

NORTON & NORTON
2211 N. Broadway

POTTER RADIO SALES CO.
1217 W. 54th St.

RADIO SUPER SERVICE CO.
2044 Venice Blvd.

CHAS. A. ROBINSON
4502 S. Normandie

RADIO ELECTRIC SHOP
762 S. Vermont Ave.

RADIO CABINET DIST. CO.
956 South Broadway

A. C. SINGER
4127 Pasadena Ave.

SOUTHWEST ELECTRIC &
RADIO CO., 807 W. Florence Ave

WEST STATES ELECT. CO.
4751 South Broadway

WILKINS RADIO MFG. CO.
5377 Central Avenue

Hollywood Dealers

THE BARROWS COMPANY
5545 Sunset Blvd.

DORAN'S ELECTRIC SHOP
7515 Sunset Blvd.

DORAN'S ELECTRIC SHOP
8039 Santa Monica Blvd.

MELROSE RADIO SHOP
5583 Melrose Ave.

C. H. PRESTON & SON
11285 Ventura Blvd.
North Hollywood



Model 345 - \$82.50 with the
New Model 415 Reproducer \$31.50
Model 350 - \$115.00
with built-in Reproducer -

[In addition to the models pictured here Stewart-Warner Matched Unit Radio is made in a full line of table and console types in both single and three dial control, five and six tube receivers.]

Southern California Dealers

ALHAMBRA, LeRoy G. Franklin
644 W. Main

ARROYO GRANDE, J. D. Trull
Arroyo Grande Plumbing and
Electric Shop

ARTESIA, Wm. B. Hayes
325 N. Main St.

BAKERSFIELD, Chilton-Grant
Radio Co.
1818 Twentieth St.

BARSTOW, Barstow Radio Shop

BELLFLOWER, Standard Radio Shop
501 Somerset St.

BREA, Bennett's Radio Shop
129 S. Pomona Ave.

CHINO, Woods Radio Company
413 Sixth St.

COMPTON, Nygard Electric Co.
151 East Main St.

COVINA, Harold R. Houser
115 College St.

CULVER CITY, Culver City Radio &
Elec. Co.
6715 Washington Blvd.

DOWNEY, H. W. Speaker
8th and Crawford

EAGLE ROCK, Weaver & King
5112 Eagle Rock Blvd.

EL SEGUNDO, B. W. McAllister
110 Grand Ave.

EL MONTE, Weaver & King
(El Monte Hdw. Co.)

FULLERTON, Radio Studio
112½ North Spadra

GARDENA, Don Spears
725 W. 165th St.

GLENDALE, Willard Hellman
(Broadway Elec.)
202 E. Broadway

HERMOSA BEACH, Rose Radio Store
246 Camino Real

HUNTINGTON PARK, H. L. (Radio)
King
116 E. Irvington St.

HYNES, Van & Jenkins

INGLEWOOD, R. D. Aylesworth
111 N. Market St.

LANCASTER, E. A. Knepf

BISHOP, Griffith Bros.

LONE PINE, Griffith Bros.

LONG BEACH, Alday & Crandall
118 American Ave.

LONG BEACH, The Electric
Radio Co.
1719 E. Anaheim

LONG BEACH, W. L. Horrell
740 Pine St.

LUDLOW, Reed & Gilbert

LYNWOOD, Lynwood Elec. Co.
204 N. Long Beach Blvd.

NEWHALL, C. E. Graham

ORANGE, Roy Des Larzes
143 N. Glassell St.

PALMS, Brickell Radio Elec. Co.
12204 Washington Blvd.

PASADENA, Wyckoff & Verinder
1447 North Lake St.

PASADENA, Premier Radio
11 California St.

PASO ROBLES, R. C. Heates

PICO, Pico Radio Shop

POMONA, George W. Hiatt
183 E. Third St.

REDLANDS, J. L. Yount
106 W. Citrus Ave.

SAN BERNARDINO, Gurr, Smith
& Gurr
439 Fourth St.

SAN FERNANDO, Willie Rowe

SAN GABRIEL, A. Burman
3550 E. Huntington Dr.

SAN LUIS OBISPO, Cline Elec. Co.
988 Monterey St.

SANTA ANA, Shafer's Music Store
415 N. Main St.

SANTA BARBARA, Val Folger
732 State St.

SANTA MARIA, Ford & Smart
118 E. Main St.

SANTA MONICA, J. S. Suits
825 Wilshire

SANTA PAULA, The Music Shop
104 W. Main St.

SATICOY, H. H. Wright
Sixth and D Sts.

TAFT, L. H. Bird
510 Center St.

TONOPAH, NEVADA
Tonopah Electric Company

UPLAND, Jay M. Ross

VENICE, Stewart-Warner Radio
Studio
1029 Washington Blvd.

WALNUT PARK, Terminal Electric
1608 Seattle St.

WHITTIER, H. C. Oldham
128 S. Greenleaf

WILMINGTON, G. F. Clausen
716 W. Anaheim St.

Remember - *Stewart-Warner* Radio Uses
the Famous U.S. Navy Receiving Circuit -
Stewart-Warner Products Service Station
{ Wholesale Distributors Stewart-Warner Radio }
1366 South Figueroa Street - LOS ANGELES

Los Angeles, California—467 Meters



LESLIE ADAMS
Announcer

KFI

4000 WATTS—640 KILOCYCLES
Radio Central Super-Station of Earle C. Anthony, Inc.
1000 S. Hope. Phone WE. 0331. After 5 P.M., WE. 0337
Class "B" 5000-Watt W. E. Sta., Operating on 4000 Watts
ROBERT HURD, Program Manager

DAILY EXCEPT SUNDAY—
6:15 p. m.—Radiotorial.

WEEK COMMENCING SUNDAY, MAY 1, 1927

SUNDAY, MAY 1

- 10:00 a. m.—Morning services under direction of L. A. Church Federation.
11:00 a. m.—Services by Third Church of Christ, Scientist.
5:00 p. m.—Vesper services.
6:00 p. m.—Program by Russian Academy of Musical Art Trio: Boris Myronoff, piano; Mischa Speigel, violin; Alex Borrisoff, 'cello.
6:58 p. m.—Father Ricard's Sunspot Weather Forecast.
7:00 p. m.—Aeolian Organ Recital, Alex Reilly at the console.
8:00 p. m.—Packard Classic Hour.
9:00 p. m.—Sunday Night concert, "Bible Story, 'David and Bathsheba,'" with Symphonic accompaniment, by the National Broadcasting Co., over Orange Network.
10:00 p. m.—Packard Six Orchestra, Bill Hennessey, director; Dolly MacDonald, blues singer; Esther Walker, pianist.

MONDAY, MAY 2

- 5:30 p. m.—Ace of Clubs Orchestra, Ted Strong, director.
6:15 p. m.—George Wilder Cartwright.
6:30 p. m.—Gamut Male Quartet.
7:00 p. m.—Johnston & Farrell's Music Box Hour, Director Gene Johnston, with Jim, Jack and Gene Trio and soloists.
8:00 p. m.—Grand opera, "Elisir d'Amore," by Donizetti, by the National Broadcasting Co. over the Orange Network.
9:00 p. m.—Program of American music with Maurine Dyer, mezzo soprano.
10:00 p. m.—Pastel Trio.

TUESDAY, MAY 3

- 5:30 p. m.—The Dragon Hawaiians Trio.
6:15 p. m.—Prof. Carl S. Knopf.
6:30 p. m.—Bertha Miller English, pianist; Elaine Ruth, Katherine Spangler.
7:00 p. m.—Los Angeles Fire Dept. Orchestra; Dave Pickard and Ben Allan.
8:00 p. m.—Gattone String Quartet; James Burroughs, tenor.
9:00 p. m.—An Hour in Memory Lane, by the National Broadcasting Co. over the Orange Network.
10:00 p. m.—Azure Music Club; Edna Cook, blues singer; Glenn Edmunds and his Collegians Dance Orchestra.

WEDNESDAY, MAY 4

- 5:30 p. m.—Sebastions Cotton Club Orch.
6:15 p. m.—Radiotorial Period.
6:30 p. m.—Harold Shock and Rose Room Orchestra.

- 7:00 p. m.—Ray Fisher's Original Victorians Dance Orchestra.
7:30 p. m.—Nick Harris, Detective Stories.
7:45 p. m.—Ira D. Morgan, baritone.
8:00 p. m.—James Burroughs, tenor; Calpet String Quartet; Y. Borowsky, director, on California Petroleum Corp. program.
9:00 p. m.—Choral and Drama Hour, by the National Broadcasting Co. over Orange Network.
10:00 p. m.—Sunset Instrumental Quartet; Dorothy Ruth Miller, concert pianist; Virginia McCoy, contra-contralto.

THURSDAY, MAY 5

- 5:30 p. m.—Legion Night Club Orchestra.
6:15 p. m.—Radiotorial Period.
6:30 p. m.—Clarice Russell and Leslie Adams.
7:00 p. m.—Program by University of So. Calif.
8:00 p. m.—KFI Drama Hour.
9:00 p. m.—Light opera, "Olivette," by Audran, by National Broadcasting Co. over the Orange Network.
10:00 p. m.—Program of Modern Classical Music: Lorelle Fierstad, violinist; Lucille Whitson, pianist.

FRIDAY, MAY 6

- 5:30 p. m.—Eugene Biscailuz program.
6:15 p. m.—Madame Nelson, psychologist.
6:30 p. m.—Vest Pocket Period.
7:00 p. m.—Aeolian Organ Recital, Alex Reilly at the console.
8:00 p. m.—Program by Paul Roberts and Leslie Adams.
9:00 p. m.—Hits and Bits, by the National Broadcasting Co. over Orange Network.
10:00 p. m.—Dresden Girls Trio.

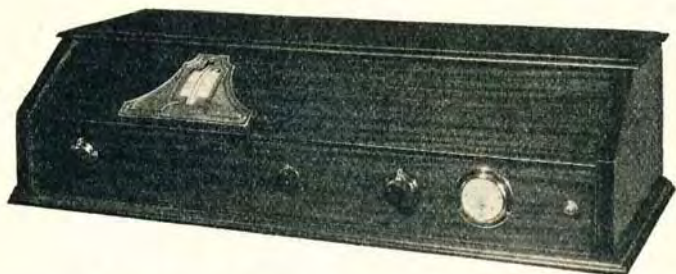
SATURDAY, MAY 7

- 5:30 p. m.—Del Monte Orchestra.
6:15 p. m.—Francis Sullivan, Literary Talks.
6:30 p. m.—Collegiate Aeolians Dance Orchestra; Irene Langley, blues singer, with uke.
7:30 p. m.—Felipe Delgado, Spanish baritone, with Edna Clark Muir, pianist.
8:00 p. m.—Saturday Night Review, by the National Broadcasting Co., broadcast over the Orange Network.
9:00 p. m.—Thomas Wallace, baritone; Ida Krupp, soprano.
10:00 p. m.—Packard Radio Club; Esther Walker, pianist; Red Wyatt and his uke; Helen Guest, ballad singer.
11:00 p. m.—KFI Midnight Frolic; Ace of Clubs Dance Orchestra, and Mosby's Dixieland Blue Blowers, and soloists.

Copyright 1927 by Earle C. Anthony, Inc.
Program Published as Submitted by the Station

KOLSTER HEADQUARTERS SCHWABACHER-FREY CO.
736 S. Broadway, Los Angeles

*Here is the Set for Which
All the Radio World
Has Asked*



**NEUTROWOUND
"ALLECTRIC"**

No Batteries—no Power Units, or any of the so-called eliminators are necessary. The cord that runs from the set connects to your house current—no fussing about "A," "B" and "C" connections. This is the greatest step forward in radio reception.

Learn About This Set Before You Buy

Deliveries Are Now Being Made to Radio Dealers

Western Auto Electric Co.

Distributor

Telephone WEstmore 1441

1601-1611 S. Hope St., Los Angeles



"Uncle John" Daggett
Announcer

Los Angeles, California—405.2 Meters

KHJ

500 WATT'S—740 KILOCYCLES

Times Bldg., First and Broadway, Los Angeles
Owned and Operated by Los Angeles Times
JOHN S. DAGGETT, Manager and Program Announcer
Phone MEt. 0700

"Kindness, Happiness and Joy"

NIGHTLY EXCEPT SUNDAY AND MONDAY—

6:00 to 6:30 p. m.—KHJ Concert Trio and J. Walter Leopold.
7:30 p. m.—Scripture Reading.

WEEK COMMENCING SUNDAY, MAY 1, 1927

SUNDAY, MAY 1

- 10:00 a. m.—Dr. H. C. Culbertson, pastor of Plymouth Congregational Church,
10:30 a. m.—Morning service from the First Methodist Episcopal Church;
7:00 to 8:00 p. m.—Evening service from the First Methodist Episcopal Church.
8:00 p. m.—Studio program presenting Frederick MacMurray, viola; Grace Currey, harpist, and Louise Miller, pianist.
9:30 to 11:00 p. m.—Orpheus Four Male Quartet, sacred songs

MONDAY, MAY 2

Silent all day.

TUESDAY, MAY 3

- 6:30 p. m.—Children's hour with the Radio Fairies and Queen Titania and the Sandman: Betty Jane Uhl, pianist; Marguerite Bringham, "Nightingale"; Charles Leslie Hill, "Honey Boy," and Playground Department Harmonica Band.
7:40 p. m.—H. M. Robertson, "DoDgs."
8:00 to 9:15 p. m.—One-act play
9:15 p. m.—Harold Roberts' Golden State Band.

WEDNESDAY, MAY 4

- 6:30 p. m.—Children's program, presenting Dick Winslow, screen juvenile; Vivian Marple, "Blue Bell of KHJ"; Glenn Fitz, "Optimistic Mascot"; Patricia Eccleston, "Little Daffodil"; Lois Jane Campbell, "Brown Eyes"; Viola Essen, "B. B.," and pupils of Marshall Stedman.
7:40 p. m.—Dr. Mars Baumgardt.
8:00 to 10:00 p. m.—Classical evening featuring Samuel Furede, cello virtuoso.
10:00 to 11 p. m.—Los Angeles Railway Orchestra.

THURSDAY, MAY 5

- 6:35 p. m.—Children's hour with Joyce Coad, "Little Red Riding Hood"; Jeonne DeBard, "Bonnie Jeanne of Radioland"; June Brandon, contralto; Dickie Brandon,

reader; Rosetta Lewin, "Curly Locks"; Nelita Bennett, "Ginger Bread Girl," and David Rosenthal, saxophonist, pupil of Lewis D'Ippolito.

7:40 p. m.—Dr. Philip M. Lovell.

8:00 to 10:00 p. m.—Feature program with the internationally-known Zoellner Quartet; Leo H. Sansiper, Russian baritone; Louise Miller, concert pianist.

9:00 p. m.—Arthur Edwin Wake, vice-president and general manager of Abraham Lincoln School for Boys,

10:00 to 11:00 p. m.—Glenn Edmonds and his Varsity Four.

FRIDAY, MAY 6

6:30 p. m.—Children's program with Clyvus Holland, Shakespearean reader: Roberta Bush, "Firefly"; Henrietta Poland, "Forget-Me-Not"; Richard Headrick, "Little Minister"; Collins Twins, Katherine and Ellen, vocal duets, and David Durand, "Little Boy Blue."

7:40 p. m.—Thomas F. Ford, "Book Reviews."

8:00 to 9:00 p. m.—Musical program

9:00 to 10:00 p. m.—F. J. Smith and his Los Angeles Ambassador Band

SATURDAY, MAY 7

6:30 p. m.—Children's hour, featuring Dolly Wright, "Dolly of Radioland"; Nona Clapp, "Sunshine Fairy"; Arthur Stevens, "King Arthur"; Marjorie G. Lowe, "June Bug"; Clark Paschal, 13-year-old saxophonist; Joy sisters, Elaine and Marguerite, in readings.

7:40 p. m.—Talk on "Child Health Week."

8:00 to 10:00 p. m.—Regular Saturday night old-time frolic with Mr. and Mrs. Sears and their Husking Bee Dancers, E. A. Mulford, "Dixie Dan," and Mammy Lou of KHJ.

9:00 p. m.—Talk on "Educational Banking" by A. J. Dumm.



Western B POWER UNIT

DIRECT FROM FACTORY TO YOU
OUTPUT 0-180 VOLTS. OPERATES ANY
SET. TWO VOLTAGE CONTROLS.
NO HUM OR DISTORTION

Price \$18.50

ASHWORTH & GALLOP, 5845 S. Broadway, Los Angeles, Calif.

Prompt Attention to Mail Orders—Phone THornwall 3393—Open Evenings

The Famous Kemper Portable Radio



The Companionable Set

Loop operation—power tube—improved tone chamber
precision dials—voltmeter

On display at the following locations:

Ambassador Hotel
Biltmore Hotel
509½ S. Western Ave.
1553 N. Wilcox
Subway Terminal Waiting Room
14 Mercantile Arcade Bldg.
2015 West Seventh

124 Pacific Ave., Long Beach
208½ S. Brand Blvd., Glendale
257 E. Colorado St., Pasadena
1436 Third St., Santa Monica
6611 Washington Blvd., Culver City
745 E. Seaside Blvd., Long Beach
8633 Hollywood Blvd.

RADIO STUDIOS, 1207 Fourth Ave., Seattle Wash.
JOHNSTONE RADIO CO., 688 Geary St., San Francisco

There is an exclusive Kemper Radio Shoppe near you.

KEMPER RADIO CORPORATION

1236 Santee Street

Westmore 1439

Los Angeles, Calif.

Pioneer Manufacturers of Portable Radios in the West



HAROLD ISBELL
Announcer

Hollywood, California—337 Meters

KNX

750 WATTS—890 KILOCYCLES
LOS ANGELES EVENING EXPRESS
Paul G. Hoffman's Studebaker Bldg., 6116 Hollywood
Blvd., Hollywood. Phone HEMPstead 4101
NAYLOR ROGERS, Manager and Program Director
GLEN RICE, Asst. Manager
"The Voice of Hollywood"

DAILY EXCEPT SUNDAY—

- 6:45 to 8:00 a. m.—Exercises by Dr. P. M. Seixas, courtesy of Producers of Mission Orange Juice.
- 8:00 a. m.—Inspirational talk and morning prayer.
- 8:55 a. m.—Time signals from Washington, D. C.
- 9:00 a. m.—Radio Shopping News by Carey Preston Rittmeister.
- 10:00 a. m.—Town Crier of the Day's morning message.
- 10:30 a. m.—Kate Brew Vaughn, Director Household Economics Dept., Evening Express, except Friday and Saturday.

- 12:00 noon—KNX Trio, courtesy Suburban Realty Co.
- 12:30 p. m.—W. F. Alder Travelogue.
- 2:00 p. m.—Radio Trades Association Program.
- 4:00 p. m.—Lost and Found Column.
- 4:55 p. m.—Market reports.
- 5:30 p. m.—Howard Clarke.
- 5:45 p. m.—The Town Tattler.
- 6:00 p. m.—Biltmore Hotel Orchestra, broadcast from the Biltmore Dining Room.
- 6:30 p. m.—Dinner hour concert presenting the Yale Radio Battery Orchestra.

DAILY EXCEPT SUNDAY AND TUESDAY—

- 11:00 p. m.—Hotel Ambassador, Gus Arnheim's Coconut Grove Orchestra.

WEEK COMMENCING SUNDAY, MAY 1, 1927

SUNDAY, MAY 1

- 10:00 a. m.—First Presbyterian Church of Hollywood, Rev. Stewart P. MacLennan.
- 2:00 to 4:00 p. m.—City Park Board
- 5:15 p. m.—All Souls Church, Dr. Charles F. Aked speaking.
- 6:30 p. m.—Hollywood Unitarian Church.
- 7:00 p. m.—First Presbyterian Church of Hollywood, Rev. Stewart P. MacLennan.
- 8:00 p. m.—Circle Theater Concert Orchestra, Carli D. Elinor, director.
- 9:00 p. m.—Feature program.
- 3:30 p. m.—Don Warner, popular pianist.
- 4:00 p. m.—Garden talk, Dewey R. Kruckeberg of Theodore Payn's Nurseries.
- 4:15 p. m.—Joyce Coad.
- 4:30 p. m.—"Own Your Own Home," Chet Mittendorf.
- 7:00 p. m.—Birkel Music Co., presenting the Brunswick Panatope.
- 8:00 p. m.—Security Trust & Savings Bank courtesy program.
- 10:00 p. m.—Earl Burnett's Biltmore Hotel Orchestra, courtesy of Mullen & Bluett.

MONDAY, MAY 2

- 12:45 p. m.—C. P. R.'s musical program.
- 3:00 p. m.—First Presbyterian Church of Hollywood.
- 4:30 p. m.—"Own Your Own Home," by Chet Mittendorf.
- 5:00 p. m.—Talk by E. C. Richardson
- 7:00 p. m.—George J. Birkel Music Co. presenting the Brunswick Panatope.
- 7:30 p. m.—Playlet, courtesy Overell Furniture Company.
- 8:00 p. m.—L. W. Stockwell Co. courtesy program, presenting Calmon Luboviski master violinist, and Claire Mellonino, concert pianist.
- 9:00 p. m.—Chet Mittendorf's Merrymakers.
- 10:00 p. m.—Earl Burnett's Biltmore Hotel Orchestra, courtesy Mullen & Bluett.
- 12:45 p. m.—Charles Weeks, talking on "Intensive Little Farms."
- 3:00 p. m.—L. A. District Federation of Women's Clubs musical program.
- 4:00 p. m.—C. P. R.'s Musical Program.
- 4:30 p. m.—Boy Scouts' Musical Program.
- 7:00 p. m.—Fitzgerald Music Co. presenting the Ampico Knabe Piano.
- 8:00 p. m.—Davis Perfection Bread Co. courtesy program, presenting the Royal Order of Optimistic Do-Nuts.

TUESDAY, MAY 3

- 12:45 p. m.—Broadcasting Advertising Club Luncheon from Hotel Biltmore.
- 4:30 p. m.—C. P. R.'s musical program.
- 7:00 p. m.—Wilshire Ionaco Company courtesy program presenting Charles Hamp in his 30 minutes of "Sunshine."
- 7:30 p. m.—Fitzgerald Music Co. presenting the Ampico Knabe Piano.
- 8:00 p. m.—Tufts-Lyon Arms Co. courtesy program.
- 9:00 p. m.—Sparr Heights courtesy program.
- 10:00 p. m.—Hotel Ambassador, Gus Arnheim's Coconut Grove Orchestra, courtesy of Jans Investment Co.
- 10:00 p. m.—Broadcasting Main Events from Hollywood American Legion Stadium, courtesy of John Wright, the Tailor.
- 12:45 p. m.—C. P. R.'s musical program.
- 3:00 p. m.—Town Crier of the Day.
- 4:30 p. m.—"Own Your Own Home," Chet Mittendorf.
- 7:00 p. m.—Stories of insect life by Harry W. McSpadden.
- 7:15 p. m.—Announcement of Sunday services of leading Los Angeles churches.
- 7:30 to 10:00 p. m.—Feature program.
- 10:00 p. m.—Earl Burnett's Biltmore Hotel Orchestra, courtesy of Mullen & Bluett.
- 12:00 midnight—KNX Frolic

WEDNESDAY, MAY 4

- 12:45 p. m.—C. P. R.'s musical program.
- 3:00 p. m.—Paul Hugen.

Program Published as Submitted by the Station.

Add a Power Stage to any Set!



POWER amplification is essential to clear, true radio reproduction because plenty of power is required to amplify all tones equally. Your present set will equal or surpass the new 1927 models when equipped with the Centralab Tone Amplifier because it conveniently adds this necessary power stage.

Model 100, for sets with 6-volt "A" Battery. Uses CX 371 or UX 171 tube.
Model 200, for dry cell operated sets only. Uses UX 120 or CX 220 tube.

\$16⁰⁰

Either Model—walnut finish cabinet—without tube.



New Centralab Station Selector
Biggest \$1.00 value in Radio. Makes your set more selective. Tunes out short wave length local interference.

Ask your dealer, or send a dollar.
Satisfaction Guaranteed.

CENTRALAB Tone Amplifier adds an extra stage of amplification, using the UX 171 power tube. Immediately increases volume on all stations and gives the full rounded tones that seem to move the radio artists right into your own home. The speaker is protected by a tone filter; volume is fully controlled from a whisper to maximum by a single knob. The greatest radio improvement in years, and you can quickly attach it to your set without tools or alterations.

Let your dealer demonstrate the improvement the wonderful new Centralab Tone Amplifier assures, or write us for literature.

CENTRAL RADIO LABORATORIES
18-A Keefe Avenue Milwaukee, Wis.

Parts makers for 69 manufacturers of leading standard sets.

Centralab

Pacific Coast Representative
THE SPECTOR COMPANY Rialto Building, San Francisco



BILL RAY
Announcer

Hollywood, California—252 Meters

KFWB

500 WATTS—1190 KILOCYCLES
WARNER BROS. MOTION PICTURE STUDIOS
Warner Bros. West Coast Studio, 5842 Sunset Blvd.
GERALD L. KING, Mgr. WM. RAY, Asst. Mgr.
Phone GL. 9461
"Movie Land"

DAILY EXCEPT SUNDAY—

- 12:30 to 1:30 p. m.—Classified Hour.
5:00 to 5:15 p. m.—Vacation Days.
6:00 to 7:00 p. m.—Pontiac Six Dinner Hour.
10:00 to 11:00 p. m.—Musical program from Mayfair Hotel.
Courtesy of Bundy & Albright.
11:00 to 12:00 p. m.—Dance music from El Patio Ballroom.
MONDAY, TUESDAY AND WEDNESDAY—
5:00 to 5:40 p. m.—Children's Hour.

WEEK COMMENCING SUNDAY, MAY 1, 1927

SUNDAY, MAY 1

- 2:00 to 3:00 p. m.—Organ recital on the world's mightiest organ, located in Roosevelt Memorial Park, Los Angeles.
8:30 to 9:00 p. m.—Program by courtesy of the Southern California Music Co.
9:00 to 11:00 p. m.—Warner Bros. Frolic, introducing Kenneth Gillum, popular songs; Charlotte DeLovelace, blues songs; LeRoy Kullberg and his ukulele; Frances St. George, KFWB jazzmania girl; Harry G. Keiper and his Movieland Orchestra.

MONDAY, MAY 2

- 12:00 to 12:30 p. m.—Pacific Electric Art.
7:00 to 7:50 p. m.—June Parker, blues songs; Sol Hoopii's Hawaiian Quartette.
8:00 to 9:00 p. m.—Program by courtesy of Suburban Realty Company, Glendale, California, featuring the Suburban Estate Concert Orchestra, under the direction of Jack Cronshaw; Eunice Wynn, popular songs.
9:00 to 10:00 p. m.—John Ganton, tenor, and Warner Bros. European Novelty Orchestra, under direction of Chico DeVerde.

TUESDAY, MAY 3

- 1:30 p. m.—Mabel Leonard's Surprise program.
5:00 to 5:15 p. m.—Vacation Days and music.
7:00 to 7:30 p. m.—Program by courtesy of the Consolidated Cleaners and Dyers, introducing their string trio and Julius Phillips, tenor.
7:30 to 8:00 p. m.—Program by courtesy of the Southern California Music Company.
8:05 to 9:05 p. m.—Program by courtesy of Sidney Glass Shoe Co.

Program Published as Submitted by the Station.

- 9:15 to 10:00 p. m.—Vernon Rickard, tenor; Hollywood Orchestral Quartette.

WEDNESDAY, MAY 4

- 7:00 to 7:30 p. m.—Thirty minutes of sunshine by Charles W. Hamp.
7:30 to 8:00 p. m.—Warner Bros. Orchestra.
8:00 to 9:00 p. m.—Program by courtesy of Stewart-Warner Products, Inc., featuring concert orchestra and soloists.
9:00 to 10:00 p. m.—Norm Rathort and Doc Hostetter, popular numbers; Dan Santos Hawaiian Trio.

THURSDAY, MAY 5

- 1:30 p. m.—Mabel Leonard's Surprise program.
7:00 to 7:50 p. m.—Owen Fallon and his Californians; Ann Grey, blues songs.
8:00 to 9:00 p. m.—Program by courtesy of the Southern California Music Company.
9:00 to 10:00 p. m.—Browsky's Russian Quintette; Emma Kimmel, soprano.

FRIDAY, MAY 6

- 7:00 to 7:30 p. m.—Program by courtesy of the Southern California Music Company.
7:30 to 7:50 p. m.—Sol Hoopii's Hawaiian Quartette.
9:10 to 10:00 p. m.—LeGrand Concert Ensemble; Edward Novis, tenor; Studio Chatter at 9:30.

SATURDAY, MAY 7

- 6:00 to 7:00 p. m.—Dinner hour concert, courtesy of Reeve-Gartzmann, Inc.
7:00 to 8:00 p. m.—Carl Dye and his Melody Makers; Ruth Michaelson, blues songs.
8:00 to 9:00 p. m.—Program by courtesy of the Mona Motor Oil Company, introducing Vernon Rickard, tenor; Mona Motor Oil Company String Trio.

TO JOBBERS AND MANUFACTURERS

Spaulding Fibre, Spaulding Bakelite, Hope Talking Tape, Irvington Spaghetti and Wire

Factory Stocks and Cutting Equipment—Ample Stocks in Los Angeles

Panels, Washers, Discs, Special Shapes

CLAPP & LaMOREE

1325 San Julian Street, Los Angeles

LOS ANGELES

SAN FRANCISCO

PORTLAND



A Hula Hula in Honolulu

Wanted Better Radio
Reception
SO!!

POSTAL TELEGRAPH - COMMERCIAL CABLES		
RECEIVED AT	<small>CLARENCE H. MACKAY, PRESIDENT</small> CABLEGRAM	DELIVERY NO.
		STANDARD TIME INDICATED ON THIS MESSAGE
<small>TELEGRAMS TO ALL AMERICA</small>		

F122 FY ME 611 PM 24 CABLE

HONOLULU APR 16 1927

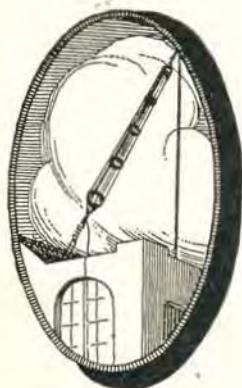
WLT WEST COAST RADIO COMPANY

2407 WEST SLAUSON LOS ANGELES CALIF

SHIP IMMEDIATELY ONE WESCO LOW LOSS ANTENNA PARCEL POST COD

RADIO SUPPLY SHOP
HONOLULU

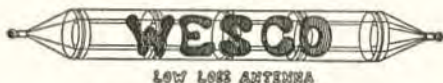
No inquiry respecting this message can be attended to without the production of this paper. Repetitions of doubtful words should be obtained through the Company's office and not by DIRECT application to the sender.



Price
\$7.50

Cage Type Antennae are fundamentally correct in their construction. A "WESCO" Low Loss Antenna will improve your Radio reception by giving you greater volume on distant stations and clearer tone quality on local broadcasting stations. Comes complete with heavy duty insulators and a 19 stranded rubber-covered lead-in cable. Easily installed, requiring but a single 20-foot pole.

Call—Write—or Telephone!



LOW LOSS ANTENNA

WEST COAST RADIO CO.

PHONE VERMONT 1893

2407 WEST SLAUSON AVE

LOS ANGELES.



G. ALLISON PHELPS
Manager and Announcer

Hollywood, California—370.2 Meters

KMTR

500 WATTS
KMTR RADIO STATION
1025 N. Highland Avenue. Telephone HOLLY 3026
Owned and Operated by C. C. JULIAN
FORBES W. VAN WHY, Engineer-in-Charge

DAILY EXCEPT SUNDAY—

- 7:00 to 7:30 a. m.—Prof. Barclay L. Severn's Setting-Up Exercises.
8:45 to 9:00 a. m.—Time signals and musical selections.
12:00 to 12:30 p. m.—Leighton's Arcade Cafeteria Orchestra.
12:30 to 1:30 p. m.—Who's Who and What's Happening.
1:30 to 2:30 p. m.—KMTR Tea Dinner Program.
5:30 to 6:00 p. m.—White King Male Quartet courtesy Los Angeles Soap Co.
6:00 to 6:15 p. m.—Nightly Doings.
6:15 to 6:45 p. m.—Rancho Vista Avocado courtesy program
6:45 to 7:30 p. m.—Fitzgerald Music Company, courtesy program.
10:00 to 11:00 p. m.—Miller's Cafe Lafayette Dance Orchestra.

WEEK COMMENCING SUNDAY, MAY 1, 1927

SUNDAY, MAY 1

- 5:30 to 6:15 p. m.—White King Male Quartet.
courtesy of Los Angeles Soap Company.
6:15 to 6:30 p. m.—Nightly Doings.
6:30 to 7:00 p. m.—Half hour of Cheer with Burr McIntosh.
7:00 to 8:00 p. m.—Miller's Cafe Lafayette Concert Orchestra.
8:00 to 9:30 p. m.—Walker's Fifth Street Store courtesy program.

MONDAY, MAY 2

- 11:45 to 12:00 noon—Golf talk by S. E. Connolly of the Los Angeles Athletic Club.
12:30 to 1:30 p. m.—Who's Who and What's Happening in Pomona.
4:00 to 4:30 p. m.—Talk by J. P. Redding, representing the Iona Company.
7:30 to 8:00 p. m.—Ohrmund Bros., furnace manufacturers, courtesy program.
8:00 to 9:00 p. m.—Eureka Vacuum Cleaner Co. courtesy program.
9:30 to 10:00 p. m.—Hollywood Storage Co. courtesy program.

TUESDAY, MAY 3

- 9:00 to 9:45 a. m.—Sylvia, the Blind Cook.
9:45 to 10:00 a. m.—Charles Hamp, representing the Iona Company.
10:00 to 11:00 a. m.—Georgia O. George, "The Psychology and Physiology of Beauty."
11:00 to 12:00 noon—Madame Alenc's talk.
12:30 to 1:30 p. m.—Who's Who and What's Happening in Whittier.
4:00 to 4:30 p. m.—Advance Elect. Co. courtesy program.
4:30 to 5:15 p. m.—LeRoy Parry and his dance orchestra.
5:15 to 5:30 p. m.—Talk on health by Dr. Robert T. Williams.
7:30 to 8:00 p. m.—Overell Furniture Co. courtesy program.
8:00 to 9:00 p. m.—Maxwell House Coffee Co. courtesy program.
9:00 to 10:00 p. m.—Hollywood Storage Co. courtesy program.

WEDNESDAY, MAY 4

- 10:00 to 10:30 a. m.—Travel talk by Dr. S. J. Matheson.
12:30 to 1:30 p. m.—Who's Who and What's Happening in Anaheim.
5:00 to 5:30 p. m.—Dr. Wesley M. Barrett, "Perfect Eyesight Without Glasses."

- 7:30 to 8:30 p. m.—Walker's Fifth Street Store courtesy program.
8:30 to 10:00 p. m.—Suburban Realty Company courtesy program.

THURSDAY, MAY 5

- 9:00 to 10:00 a. m.—Sylvia, the Blind Cook.
10:00 to 10:15 a. m.—Charles Hamp, representing the Iona Company.
10:15 to 10:45 a. m.—"Diet Question Box."
10:45 to 11:45 a. m.—Georgia O. George, "Psychology and Physiology of Beauty."
11:45 to 12:00 noon—Golf talk by S. E. Connolly of the Los Angeles Athletic Club.
4:00 to 4:30 p. m.—Talk by J. P. Redding, representing the Iona Company.
7:30 to 8:00 p. m.—Winslow B. Felix, Chevrolet dealer, courtesy program.
8:00 to 9:00 p. m.—A. D. Shotwell Corp. courtesy program.
9:00 to 10:00 p. m.—Hollywood Storage Co. courtesy program.

FRIDAY, MAY 6

- 8:00 to 10:00 a. m.—Broadcast from "Breakfast Club."
12:30 to 1:30 p. m.—Who's Who and What's Happening in Santa Ana.
4:00 to 4:30 p. m.—Advance Elect. Co. courtesy program.
5:00 to 5:30 p. m.—Dr. Wesley M. Barrett, "Perfect Eyesight Without Glasses."
7:30 to 8:00 p. m.—Thirty Minutes of Sunshine with Charles Hamp.
8:00 to 9:00 p. m.—Walker's Fifth Street Store courtesy program.
9:00 to 10:00 p. m.—Hollywood Storage Co. courtesy program.

SATURDAY, MAY 7

- 9:00 to 10:00 a. m.—Sylvia, the Blind Cook.
10:00 to 10:15 a. m.—Charles Hamp, representing the Iona Company.
11:30 to 12:00 noon—Gordon Whitnall of the City Planning Commission.
4:00 p. m.—Radio talk to Radio Fans by Forbes Van Why, Chief Engineer KMTR.
7:30 to 7:40 p. m.—Talk by Mr. Benesh of the Sheriff's Office.
7:40 to 8:00 p. m.—KMTR Movie Club.
8:00 to 8:30 p. m.—Lun Park courtesy program; Loren Powell's Little Symphony.
8:30 to 10:00 p. m.—Hollywood Storage Co. courtesy program.
10:00 to 12:00 midnight—Miller's Cafe Lafayette Dance Orchestra.

KOLSTER HEADQUARTERS SCHWABACHER-FREY CO.
736 S. Broadway, Los Angeles

Selling Like Hot Cakes

The Powell 'B' Eliminator

Uncondition-
ally
Guaranteed



\$12²⁵

Absolutely No Hum

Operates any set from light socket without the use of expensive and troublesome "B" batteries. A large surplus of power at 100 volts and at a cost of only a few cents a year.

MORE VOLUME - - MORE DISTANCE
GREATER SATISFACTION
BETTER QUALITY - - BETTER PRICE

No Tubes, No Acid and Nothing Else to Buy

A ten-day trial with absolute satisfaction or money back

GUARANTEE

This instrument is the result of months of experimenting and exhaustive tests. The best of materials and workmanship have been combined to insure its satisfaction with the user and it is guaranteed unconditionally for one year. If for any reason it fails to perform satisfactorily it should be returned to the seller, who is instructed to repair or replace, free of charge.

Call or Telephone VERmont 1619 for Information

Will deliver and install Eliminator in any part of the city free of charge

Powell Manufacturing Co.

4009 S. Western Ave.

Los Angeles, Calif.



Allan Falckchild

8:00 to 7:00 p. m.—Pipe organ recital by remote control from the studio of Albert Hay Malotte.

10:00 to 11:00 p. m.—Palais de Dance and Ralph Markey and his Musical Keys.

Los Angeles, California—352.7 Meters

1000 WATTS—850 KILOCYCLES

Commercial Exchange Bldg., Eighth and Olive Sts., Los Angeles

KFXB

MERLE J. GRINDLE, Manager

"LITTLE EDDIE" BARNES, Program Manager

CHARLES W. HAMP, Guest Announcer

BERTRAM O. HELLER, Technical Director

"In the Center of Greater Los Angeles"

DAILY EXCEPT SUNDAY—

10:00 to 11:00 a. m.—Hatch Graham's hour.

11:00 to 12:00 a. m.—Baron Keyes diversities.

2:00 to 4:00 p. m.—Program by remote control from Palais de Dance, featuring Ralph Markey and his Musical Keys.

4:00 to 5:00 p. m.—Educational hour.

5:00 to 5:45 p. m.—Sun-down Frolic.

5:45 to 6:00 p. m.—Amusement suggestions.

WEEK COMMENCING SUNDAY, MAY 1, 1927

MONDAY, MAY 2

7:00 to 8:00 p. m.—KFXB Collegians; Mabel and Ann Duo.

8:00 to 8:30 p. m.—Yvonne String Trio.

8:30 to 9:00 p. m.—Charlie Diamond, steel guitar artist.

9:00 to 10:00 p. m.—Pope and his Californians; Wint Cotton.

TUESDAY, MAY 3

7:00 to 7:30 p. m.—Star Furniture Co.; Bill Henry; Yvonne String Trio; Ann and Mable Duo.

7:30 to 8:00 p. m.—KFXB Collegians, dance program; James Mulligan, tenor.

8:00 to 9:00 p. m.—Alice Lee Wiley, pianist; Ruth Pitts, soprano; John Slinglander, baritone; Margaret Clark, contralto.

9:00 to 10:00 p. m.—Song Writers' Club.

9:30 to 10:00 p. m.—Olympic fight returns, remote control from Olympic Auditorium.

11:00 to 12:00 p. m.—Palais de Dance; Ralph Markey and his Musical Keys.

WEDNESDAY, MAY 4

12:00 to 1:00 p. m.—Los Angeles String Quartet.

7:00 to 7:30 p. m.—KFXB Collegians.

7:30 to 8:00 p. m.—Cactus Mfg. Co.; G. E. Roletti, baritone; Schwarts & Hester, popular songs.

8:00 to 9:00 p. m.—A. Pickholtz, tenor; La-Mont Steizer, basso.

9:00 to 10:00 p. m.—Art Clark and his dance band; Ruch Michelson, blues singer.

Program Published as Submitted by the Station.

THURSDAY, MAY 5

7:00 to 7:30 p. m.—Radio Mfg. Co., Crooners' Quartet; Barron & Little, guitar and violin.

7:30 to 8:15 p. m.—Louis N. Meyers Orch.

8:15 to 9:00 p. m.—Ann and Lou Morris; E. C. Killberg, tenor.

9:00 to 10:00 p. m.—Bell Post American Legion.

FRIDAY, MAY 6

7:00 to 7:30 p. m.—Junior Elks Antlers Club No. 11.

7:30 to 8:00 p. m.—Crooners' Quartet.

8:00 to 9:00 p. m.—Kjerulf Trio. Howard Coombs, pianist.

9:00 to 9:30 p. m.—Melody Maids; Earnest Tarrin, tenor.

9:30 to 10:00 p. m.—Jacques Le Quesne and Raphael Zarvay.

SATURDAY, MAY 7

12:00 to 1:00 p. m.—Los Angeles String Quartet.

7:00 to 7:30 p. m.—Carl Dye and his Melody Makers.

7:30 to 8:00 p. m.—Novelty Duo; Marian Boogar and Earl Lawrence.

9:00 to 10:00 p. m.—Police Frolic; Mabel and Ann Duo, Bill Henry, Melody Maids, Bill Livingston and his Radio Boys; KFXB Collegians.

FALCK

Small Payment Down
Secures a

ECHOPHONE

BATTERYLESS RADIO

"Tone Quality Unsurpassed"

Long's Radio Co.

Radio Service and Supplies

2812 S. Main St. HUMBOLT 1323
LOS ANGELES, CALIF.

FOR DEMONSTRATION
IN YOUR HOME

Name

Address

BREMER-TULLY Counterphase - Eight



**RADIO SUPER SERVICE
LONG BEACH, CALIF.**

March 24, 1927

McClelland Felthouse Corp.
Los Angeles, Calif.
Gentlemen:

In answer to your question, "Are you satisfied with the BREMER-TULLY Counterphase Eight Receiver?" I will cite a few tests made by us on what we consider the most important features of a receiver.

SELECTIVITY: We have no difficulty in consistently picking up a 5000 watt station located over a thousand miles distant and operating at four meters off the wave length of a 100 watt station whose broadcasting antenna is only two hundred feet from the outer end of the antenna of our receiver. We also receive a 500 watt station thirty miles distant operating five meters off the wave length of a 750 watt local located four blocks from us. We operated in these tests on an antenna of one hundred and forty feet which certainly did not give the receiver any of the best of it.

SENSITIVITY: We consistently play stations within a radius of over 2500 miles from our store which is located in the heart of the business district, a very poor location. We can say in this connection that we have never done any REAL FISHING, the stations usually seem to just drop in on us.

VOLUME: The Volume is in excess of all ordinary requirements. We use a BREMER-TULLY Eight for our street entertainment without having to use a power amplifier.

QUALITY: Quality is such an intangible element as to be almost beyond description but I have found the Counterphase to be the equal of any set I have ever heard. It delivers the rich, full bass notes and the highest treble with an equally natural fidelity.

In summarizing the above I will say that I am 100% sold on the BREMER-TULLY Counterphase Eight.

Yours very truly,
RADIO SUPER SERVICE,
(Signed) B. E. Rownd

Factory Representatives

**McCLELLAND-FELTHOUSE
CORPORATION**

515-517 Eddy Street
San Francisco
Tel. Franklin 6226

1358-60 South Figueroa St.
Los Angeles
Tel. WEstmore 5586 - 6519



M. E. CARRIER
Announcer

Los Angeles, California—294 Meters

KTBI

750 WATTS—1020 KILOCYCLES
BIBLE INSTITUTE OF LOS ANGELES
MR. M. E. CARRIER, Manager
PROF. H. G. TOVEY, Director of Programs
Phone ME. 6701

DAILY EXCEPT SUNDAY—

8:45 to 9:15 a. m.—Devotional Hour.
2:00 to 3:00 p. m.—Inspirational Hour.

DAILY EXCEPT FRIDAY AND SUNDAY—

7:15 to 8:00 p. m.—Aunt Martha's Children's Hour.

WEEK COMMENCING SUNDAY, MAY 1, 1927

SUNDAY, MAY 1

10:45 a. m. to 12:30 p. m.—Regular service of the Church of the Open Door.
3:00 to 4:00 p. m.—Jewish Radio Hour.
6:00 to 7:00 p. m.—Radio vesper service.
7:15 to 9:30 p. m.—Regular evening service of the Church of the Open Door.

MONDAY, MAY 2

8:00 to 9:00 p. m.—Biblical Exposition by Rev. C. A. McDonald.

TUESDAY, MAY 3

8:00 to 9:00 p. m.—Gospel song festival, directed by Prof. John B. Trowbridge.

WEDNESDAY, MAY 4

8:00 to 9:00 p. m.—Biblical Exposition by Dr. John McNeill.

THURSDAY, MAY 5

7:15 to 8:00 p. m.—Aunt Martha's children's hour.

FRIDAY, MAY 6

6:15 to 7:00 p. m.—Aunt Martha's children's hour.

7:00 to 8:00 p. m.—Exposition of International Sunday School lesson.

8:00 to 9:00 p. m.—Biblical Exposition by Dr. John McNeill.

Los Angeles, California—275.1 Meters

KFSG

ANGELUS TEMPLE, ECHO PARK. Fitzroy 5121
AIMEE SEMPLE MCPHERSON, Founder, President
ESTHER FRICKE GREENE, Organist
P. S. LUCAS, Technician in Charge
"Four Square Gospel"

DAILY EXCEPT SUNDAY AND MONDAY—

10:30 to 11:30 a. m.—Sunshine Hour.
11:30 a. m. to 12:30 p. m.—Noonday Musical.
6:30 to 7:30 p. m.—Angelus Hour.

DAILY EXCEPT SUNDAY, MONDAY, WEDNESDAY, SATURDAY—

2:30 to 3:30 p. m.—Gray Studio Program.

WEEK COMMENCING SUNDAY, MAY 1, 1927

SUNDAY, MAY 1

10:30 a. m. to 12:30 p. m.—Sunday morning worship, Aimee Semple McPherson; Charlotte Tyson Foljame, soprano; Temple organ and chimes played by Esther Fricke Greene. Quartets and soloists.
2:30 to 4:30 p. m.—Afternoon Dispensational Service by Aimee Semple McPherson.
6:30 to 8:00 p. m.—Musical Hour; Angelus Temple Band and Choir.
8:00 to 9:30 p. m.—Revival service by Aimee Semple McPherson.
10:00 to 11:00 p. m.—Organ Recital by Esther Fricke Greene.

TUESDAY, MAY 3

3:30 to 4:30 p. m.—Vesper Hour. Organ Recital by B. Earnest Ballard.

6:30 to 7:30 p. m.—Program from the Gray Studio.

7:30 to 9:30 p. m.—Evangelistic services by Student Evangelists.

WEDNESDAY, MAY 4

6:30 to 7:30 p. m.—Program from the Gray Studio.

7:30 to 9:30 p. m.—Regular mid-week prayer service by Aimee Semple McPherson.

THURSDAY, MAY 5

3:30 to 4:30 p. m.—Vesper Hour. Organ Recital by B. Earnest Ballard.

6:30 to 7:30 p. m.—Program from Angelus Temple.

7:30 to 9:30 p. m.—Regular Water Baptismal Service by Aimee Semple McPherson.

9:15 to 10:00 p. m.—Gray Studio Program. Herbert Morley, tenor; Ladies' Quartet.

10:00 to 11:00 p. m.—Organ Recital by Esther Fricke Greene.

FRIDAY, MAY 6

3:30 to 4:30 p. m.—Vesper Hour.

7:30 to 9:30 p. m.—Crusader Rally.

10:00 to 11:00 p. m.—Back Home Hour.

SATURDAY, MAY 7

6:30 to 7:30 p. m.—Program from the Gray Studio.

7:30 to 9:30 p. m.—Divine Healing Service, conducted by Aimee Semple McPherson.

Program Published as Submitted by the Station.

DO AWAY WITH BATTERIES—CALL WE. 9065



Dave Ward

Hollywood, California—226 Meters

KFOZ

1641 North Argyle Ave., Hollywood, California
 Gladstone 3197; Gladstone 3198
 DAVE WARD, Program Director and Announcer
 L. E. TAFT, Technical Engineer
 "The Palace Bungalow Studio"

DAILY EXCEPT SUNDAY—

6:00 to 7:00 p. m.—Panatrophe Dinner Hour.

MONDAY, TUESDAY, WEDNESDAY, THURSDAY—

12:00 to 1:00 p. m.—Hazel McCauley and the Office Boy.
 3:30 p. m.—Thursday. Try-outs (not broadcast).

WEEK COMMENCING MONDAY, MAY 2, 1927

MONDAY, MAY 2

- 7:00 p. m.—Sylvia Harding Trio; Florence Purdy, soloist.
 8:00 p. m.—Barrows Motor Co. Program.
 9:00 p. m.—Semi-Classical Hour, presented by Myra Belle Vickers.
 10:00 p. m.—Bob Buckner's Sole Killers and Helen McColl.

TUESDAY, MAY 3

- 7:00 p. m.—Marion Boogar and Earl Lawrence, "The Novelty Duo." Peterson Overbeck and Sherry, "The Campus Trio."
 8:00 p. m.—Neapolitan Four; Katherine Williamson.
 9:00 p. m.—Joey Starr's Orchestra; Ned Miller.

WEDNESDAY, MAY 4

- 12:00 noon—Sonny Clay and the Plantation Cafe Orchestra.
 7:00 p. m.—Sylvia Harding Trio; Florence Purdy, soloist.
 8:00 p. m.—Clint Stevenson's Hawaiian Trio, Ed Pose.
 9:00 p. m.—Galenian's Orchestra and soloists.

THURSDAY, MAY 5

- 7:00 p. m.—Leslie E. Taft on Radio.
 8:00 p. m.—Barrows Motor Co. Program.
 9:00 p. m.—Los Angeles Railway Orchestra; Honeywell Twins.

FRIDAY, MAY 6

- 12:00 noon—Greenwich Village Cafe Orchestra.
 7:00 p. m.—American Hawaiian Trio; Al Flanigan, Margaret Ruth Kernan.
 8:00 p. m.—Joey Starr's Orchestra; Buddy Helwig.
 9:00 p. m.—Bob Buckner's Sole Killers; Helen McColl.

SATURDAY, MAY 7

- 12:00 noon—Paris Inn Cafe Orchestra; Bert Roverre.
 7:00 p. m.—Phillip Tronitz Hour.
 8:00 p. m.—Jamgochian Radio Players.
 9:00 p. m.—Dance Orchestra; soloists.

SUNDAY, MAY 8

- 8:00 p. m.—Columbia Viva-Tonal Recordings.
 9:00 p. m.—Neapolitan Four; Virginia and Mable King; Joe Agnew.
 Signing off nightly at 11 p. m.

Program Published as Submitted by the Station.

FORGET BATTERY TROUBLES—CALL WE. 9065



GEORGE FRENGER
 Announcer

Pasadena, California — 315.6 Meters

KPSN

PASADENA STAR-NEWS
 1000 WATTS—950 KILOCYCLES
 GEORGE CECIL COWING, Managing Director
 GEORGE FRENGER, Program Manager
 HERSHEL SATTERFIELD, Engineer-in-Charge
 PERCY C. PRYOR, Studio Office
 Phone, Wakefield 3111

DAILY EXCEPT SUNDAY—

12:00 to 12:15 p. m.—News Bulletin.
 6:00 to 7:00 p. m.—Dinner-time News Report.

WEEK COMMENCING SUNDAY, MAY 1, 1927

SUNDAY, MAY 1

- 10:30 a. m.—Family Altar Service by the United Church Brotherhoods.
 11:00 a. m.—Services from the Pasadena Presbyterian Church.
 6:00 to 7:00 p. m.—Star-News concert, with Adolf Tandler and the Ensemble.

MONDAY, MAY 2

- 8:00 to 9:15 p. m.—Star-News concert, with Adolf Tandler and the Ensemble.

TUESDAY, MAY 3

- 8:00 to 9:15 p. m.—Star-News concert, with Adolf Tandler and the Ensemble.

THURSDAY, MAY 5

- 8:00 to 9:15 p. m.—Star-News concert, with Adolf Tandler and the Ensemble.

FRIDAY, MAY 6

- 8:00 to 9:15 p. m.—Star-News concert, with Adolf Tandler and the Ensemble.

SATURDAY, MAY 7

- 8:00 to 9:15 p. m.—Star-News concert, with Adolf Tandler and the Ensemble.

Program Published as Submitted by the Station.



Jack Duckworth
Announcer

Inglewood, California—261 Meters

KMIC

500 WATTS—1150 KILOCYCLES
Owned and Operated by JAMES R. FOUCH
M. B. RICE, Commercial Manager
NELL LARSON, Studio Accompanist
Chamber of Commerce Building, Inglewood, Cal.
"The Willard Battery Station"

WEEK COMMENCING SUNDAY, MAY 1, 1927

DAILY EXCEPT SUNDAY—

5:30 to 7:00 p. m.—Request Period. Dance music by KMIC Orchestra.

SUNDAY, MAY 1

11:00 a. m. to 12:15 p. m.—Centinella Baptist Church.

Wes Woodford and his Bachelor Four;
Geraldine Gordon, baritone;

THURSDAY, MAY 5

7:00 to 7:30 p. m.—Studio program.

7:30 to 8:00 p. m.—Ross O. Porter Tire Co. courtesy program, with the Six Syncopettes, Larry and Verne Cannon, harmony; Bill Henry and Helen McCall; Fred Wesley.

8:00 to 8:30 p. m.—Inglewood Furniture Co. courtesy program, with Waterbury's Syncopettes; Jimmie Collins, tenor.

8:30 to 10:00 p. m.—Studio program.

FRIDAY, MAY 6

7:00 to 7:30 p. m.—Studio program.

7:30 to 8:00 p. m.—Skinner Mfg. Co., courtesy program.

8:00 to 8:30 p. m.—H. R. McCellen Duco Co. courtesy program, with Jack Lempe and his Radio Boys; Geo. and Harry, ukes and harmony; Fred Wesley, blues.

8:30 to 8:45 p. m.—The Little Ant Man.

8:45 to 10:00 p. m.—Studio program.

10:00 to 12:00 p. m.—Inglewood Post No. 188, American Legion Frolic.

SATURDAY, MAY 7

7:00 to 8:00 p. m.—Studio program; Larry and Verne Cannon, buddies in harmony; Bud Riley, tenor guitar.

8:00 to 9:00 p. m.—Bill Livingston and his Radio Boys; Evie and Peggy, KMIC harmony girls; Neva Negis, warbler.

9:00 to 10:00 p. m.—Studio program; Bill Henry.

10:00 to 12:00 p. m.—Geo. Sutton, Ford dealer; frolic.

WEDNESDAY, MAY 4

7:00 to 7:30 p. m.—Studio program.

7:30 to 8:00 p. m.—Malloy-Clint, courtesy program, with Wes Woodford and his Bachelor Four.

8:00 to 8:30 p. m.—Lindburg Studio of Photography, courtesy program, with L. A. R. R. Orchestra or String Quartette.

8:30 to 10:00 p. m.—Studio program, with



Model 50
Price \$12.50
(F.O.B.)
Lacquer Finish

SPECIAL!

This Beautiful Console

Will accommodate panel
7x12-30 in.

Ample space for batteries
and loud speaker.

Made of two-toned Wal-
nut or Mahogany.

Mail Orders Given Prompt
Attention

Johnson's Cabinet Works

3635 Avalon Blvd., Los Angeles
AXridge 8662

(Open Evenings Till 6:15)

SERVICE DIRECTORY

There is a Service Man in Your Neighborhood. Call or see him.

SOUTHEAST	S E R V I C E	SOUTHWEST
6120 South Broadway TH. 0224 (Equipped to handle any job) DE HOOG BROS. RADIO COMPANY		1806 S. Hoover WE. 9650 (“Porta-Tester”) Haddaway Mfg. Co. (Established 1923)
WILSHIRE		HOLLYWOOD
214 South Western Ave. WA. 5413 HENSEL ELECTRIC STORE		4745 Fountain Ave. (One Block West of Vermont) OLympia 6405 Have Your Set Wired for No A, B or C Batteries LLEWELLYN RADIO
LONG BEACH		? ? ? ? ?
430 American Ave. Phone 653-171 RIALTO RADIO CO.		RESERVED FOR YOU CALL WEStmore 1401 FOR PARTICULARS

STANDARD RADIO CO.

417 West Pico St., Los Angeles, Calif.

FADA, ATWATER KENT, FEDERAL AND WESTERN ELECTRIC DEALER

We Carry a Complete Line

Open Model Atwater Kent Wave Length Cut Down to 200 Meters.

We Are Also Making a Specialty of Sharpening Tuning in Any Radio Set.
Two-Tube Harkness Changed to 3-Tube, Guaranteed Perfect Tune-out on
Local Stations

Telephone WEStmore 1560

Open Saturday Evenings Until 9 o'clock

Those listed on this page are competent and efficient Radio Technicians and are recommended to you for your patronage.



TOM MITCHELL
Announcer

Santa Monica, California—238 Meters

KNRC

1000 WATTS CAPACITY
Owned and Operated by KEIRULFF & RAVENS-
CROFT COMPANY
Municipal Auditorium, Ocean Park, Santa Monica,
Calif. Phone Santa Monica 63-101.
TOM MITCHELL, Studio Manager and Announcer.
C. B. JUNEAU, Transmission Engineer.
"The Station with a Smile"

DAILY EXCEPT SUNDAY—

- 4:00 to 4:45 p. m.—Smiling Circle with Tom.
2:00 to 2:30 p. m.—Shopping Tour.
2:30 to 4:00 p. m.—Santa Monica Municipal Band.
6:00 to 7:00 p. m.—Club Casa Del Mar.
7:00 to 8:00 p. m.—Merchants Preview Hour.
10:00 to 11:00 p. m.—Club Casa Del Mar.
11:00 to 12:00 p. m.—La Monica Ballroom Orchestra.

DAILY EXCEPT MONDAY—

- 8:00 to 9:00 p. m.—Band Concert.
2:30 p. m.—Band Concert.

WEEK COMMENCING SUNDAY, MAY 1, 1927

SUNDAY, MAY 1

- 10:45 to 11:45 a. m.—Pilgrim Lutheran Church Services, remote control.
2:30 to 4:00 p. m.—Santa Monica Municipal Band Concert.
5:15 to 6:15 p. m.—The Pirate Band.
6:15 to 7:00 p. m.—Pilgrim Lutheran Church Services, remote control.
7:00 to 8:00 p. m.—Club Casa Del Mar, remote control.
8:00 to 9:00 p. m.—Santa Monica Municipal Band Concert.
9:00 to 10:00 p. m.—Club Casa Del Mar, remote control.
10:00 to 11:00 p. m.—La Monica Ballroom Orchestra, remote control.

MONDAY, MAY 2

- 8:00 to 10:00 p. m.—Main Studio program, featuring the Black and Tan Orchestra.

TUESDAY, MAY 3

- 3:00 to 3:15 p. m.—Bay Builders' Exchange Booster program.
8:00 to 9:00 p. m.—Santa Monica Municipal Band Concert.
9:00 to 10:00 p. m.—Main Studio program, featuring the Southern Dons Orchestra; Novelty Duo, Marion Boogar and Earl Lawrence.

WEDNESDAY, MAY 4

- 3:00 to 3:15 p. m.—Bay Builders' Exchange Booster program.
7:30 p. m.—Talk by Undersheriff Eugene Biscailuz.
8:00 to 9:00 p. m.—Santa Monica Municipal Band Concert.
9:00 to 9:30 p. m.—Club Casa Del Mar.
9:30 to 10:30 p. m.—Broadcasting of the Fights from the Ocean Park Arena.

THURSDAY, MAY 5

- 8:00 to 9:00 p. m.—Santa Monica Municipal Band Concert.
9:00 to 10:00 p. m.—Main Studio program.

FRIDAY, MAY 6

- 3:00 to 3:15 p. m.—Bay Builders' Exchange Booster program.
8:00 to 9:00 p. m.—Santa Monica Municipal Band Concert.
9:00 to 10:00 p. m.—Main Studio program.

SATURDAY, MAY 7

- 3:00 to 3:15 p. m.—Bay Builders' Exchange Booster program.
8:00 to 9:00 p. m.—Santa Monica Band.
9:00 to 10:00 p. m.—Main Studio program, featuring Clyde Pearson, soprano; Kathleen Williamson, blues singer, accompanied by Eleanor Swall.



Major Lawrence Mott
Announcer

Avalon, California—211.1 Meters

KFWO

THE CATALINA ISLAND STATION
(Non-Commercial)
Power 250 Watts—Western Electric Equipment
"Katalina for Wonderful Outings"
MAJOR LAWRENCE MOTT, Owner-Operator
MISS FRANCES HEWITT, Studio & Program Dir.
"The Isle with a Smile"

DAILY EXCEPT MONDAY—

- 12:30 to 1:30—Hotel St. Catherine Orchestra.
6:30 to 8:00—St. Catherine Orchestra.

DAILY EXCEPT MONDAY, THURSDAY AND SUNDAY—

- 6:00 to 6:30—Studio.

MONDAYS

Silent.

TUESDAYS

- 5:30 to 6:00 p. m.—Miss Hewitt's Golden Hour.
6:00 to 8:00 p. m.—Studio.

WEDNESDAYS

- 8:00 to 9:00 p. m.—Studio Program.
9:00 to 12:00 Midnight—Overseas.

THURSDAYS

- 8:00 to 9:00 p. m.—Studio Program.

FRIDAYS

- 5:00 to 6:00 p. m.—Miss Hewitt's Golden Hour.
6:00 to 6:30 p. m.—Wrigley Chimes.

SATURDAYS

- 3:00 to 4:30 p. m.—Rebroadcast of KNX.
9:15 to 10:00 p. m.—Studio.

SUNDAYS

- 5:00 to 6:00 p. m.—Miss Hewitt's Golden Hour.
6:00 to 6:30 p. m.—Wrigley Chimes.
8:00 to 9:15 p. m.—Lobby Concert.
Victor Electrola used during all programs.

Prices Slashed!!

ON THE NEW IMPROVED

Ferbend "B" Battery Eliminator

OUR NEW PRICES

\$18.50 180 volts—formerly \$25.00
13.50 90 volts—formerly 17.50



ATTACH THIS ELIMINATOR TO YOUR LIGHT SOCKET AND POSITIVELY AVOID ANY FURTHER EXPENSE FOR "B" BATTERIES. HERE WILL BE FOUND A PERFECT SOURCE OF "B" CURRENT WITH A CLAROSTAT CONTROL WHICH ADJUSTS THE VOLTAGE; NOISELESS IN OPERATION, WITH CONSTANT AND UNIFORM POWER, FOR THE FIRST TIME ECONOMICAL ENOUGH FOR EACH AND EVERY RADIO OWNER.

THE FERBEND ELIMINATOR OPERATES ON 110-220 VOLT ALTERNATING CURRENT AND ANY FREQUENCY (CYCLES) AND DELIVERS UP TO 180 VOLTS D.C.; TAPPED AT -B + 22½ + 45 + 90 + 180 VOLTS.

Tested and approved by the laboratories of Radio News, Popular News and Daily News

\$13.50

Operates Noiselessly With Positively No Hum

**SOLD ON AN ABSOLUTE MONEY BACK GUARANTEE
 FREE INSTALLATION IN YOUR HOME**

Sold Through Independent Salesmen Only
 Call, Phone or Write and We Will Gladly Demonstrate

Exclusive California Distributor

NATIONAL ELECTRIC COMPANY

416 W. 9th St.

TUcker 9776

Los Angeles



Venice, California—208 Meters

KFVD

1440 KILOCYCLES—500 WATTS

"The Voice By the Sea"

McWHINNIE ELECTRIC CO., VENICE BALLROOM
Venice, Cal. Phone 65959

MARY ELIZABETH CARTER, Mgr. and Announcer

DAILY EXCEPT SUNDAY—

9:00 to 11:00 a. m.—Music and Trade Winds.

11:00 a. m. to 12:00 m.—Mary Elizabeth's Garden.

5:30 to 7:00 p. m.—Music and Trade Winds.

8:00 p. m. to 10:00 p. m.—Studio program.

10:00 p. m. to 12:00 m.—Cush Branch and Orchestra from Venice

Mary Elizabeth Carter WEEK COMMENCING MONDAY, MAY 2, 1927

MONDAY, MAY 2

8:00 to 10: p. m.—Roy T. Davis, whistler; Jimmie Collins, tenor; Elnora Swall and Catherine Williamson, the Venetian Joy-makers; Tiny, Jack and Buch, the KFVD Harmony Trio; Larr and Verne Gannon, Buddies in Harmony.

TUESDAY, MAY 3

8:00 to 10:00 p. m.—Scott McConnell, tenor; Edith Hancock, soprano; Harry Dinnawitzer, violinist; Cliff Gorman and Phil Dix, string and songs; Dorothy Berry, the Harmony Girl; Theo. Schaeffer, tenor;

WEDNESDAY, MAY 4

4:00 to 5:30 p. m.—Children's Hour, conducted by Ursula March Largey.

8:00 to 10 p. m.—Lyman Wood, baritone; Nina Fry, mezzo-soprano; Grace Widman, contralto; the Harmony Kids, string and songs; Arcadian Ramblers; courtesy program by the Bay Cities Conservatory of Music; Albert L. Brogg, tenor.

THURSDAY, MAY 5

8:00 to 10:00 p. m.—Bob Davis, Welsh baritone; Sally J. Shull, pianist; Analey Gra-

ham, tenor; Clyde Waller, tenor; California Colonial Band, Jack Joyce director;

FRIDAY, MAY 6

4:00 to 5:30 p. m.—Children's Hour, conducted by Ursula Macrch Largey.

8:00 to 10:00 p. m.—Marbelite Corporation of America, featuring Morris Lensk, Russian baritone; Dr. Delavanti, pianist; Mme. Tossie Weiss, operatic soprano;

SATURDAY, MAY 7

1:00 to 2:00 p. m.—Harry Judson's Entertainer's Hour, featuring Dry Judson, Walter Lyon, Addie Carlson, Freddie Wernsted and others.

8:00 to 10 p. m.—Elizabeth Blair Davis, mezzo-soprano; The Doty Twins and Karl; Barkey's String Orchestra; Tiny, Jack and Buck, the KFVD Harmony Trio;

12:00 to 2:00 a. m.—Tommy Jacob's Ship Cafe, by remote control, featuring Dave Snell and his orchestra;

SUNDAY, MAY 8

6:00 to 12:00 p. m.—Cush Branch and his Melody Orchestra, from the Venice Ballroom.

HENRY - LYFORD

KITS

UNIVERSITY COILS

FOR

DISTANCE

RADIO MANUFACTURERS SUPPLY CO.

1000 South Broadway—Corner 10th and Broadway

LOS ANGELES



"BAL" G. NICHOLS
Announcer

Long Beach, California—233 Meters

KFON

1290 KILOCYCLES—750 WATTS

PIGGLY WIGGLY STATION

Owned and Operated by

NICHOL & WARINNER, INC.

Studio—211 Jergins Trust Bldg. 617-19, 614-60

Office—212 Jergins Trust Bldg. 617-19, 614-60

"Where Your Ship Comes In"

DAILY—

- 4:30 to 6:00 p. m.—Piggly Wiggly Concert Orchestra.
6:00 to 6:15 p. m.—Request Period by Doris & Clarence.
6:15 to 7:00 p. m.—Piggly Wiggly Concert Orchestra.

DAILY EXCEPT SATURDAY AND SUNDAY—

- 10:15 to 10:30 a. m.—Devotional Period.
10:30 to 11:30 a. m.—Physiology of Beauty, Georgia O. George.

DAILY EXCEPT SUNDAY—

- 11:30 to 12:00 a. m.—Press-Telegram Early News.
12:00 noon—Lost and Found announcements.
4:00 to 4:30 p. m.—Press-Telegram late news.

DAILY EXCEPT MONDAY—

- 9:30 to 10:15 a. m.—Pacific Coast Club Organ—Herbert Nixon at the console.
2:30 to 3:10 p. m.—Long Beach Municipal Band.
3:10 to 3:20 p. m.—Intermission.
3:20 to 4:00 p. m.—Long Beach Municipal Band.
8:00 to 8:10 p. m.—Press-Telegram presenting Long Beach Municipal Band.
8:10 to 8:20 p. m.—Intermission.
8:20 to 9:00 p. m.—Press-Telegram presenting Long Beach Municipal Band.

WEEK COMMENCING SUNDAY, MAY 1, 1927

- SUNDAY, MAY 1**
11:00 to 12:30 p. m.—Church of the Nazarene, Rev. L. A. Reed.
12:30 to 2:00 p. m.—Musical program, sponsored by Birkel Music Co.
2:00 to 2:30 p. m.—Pacific Coast Club Organ, Herbert Nixon at the console.
4:00 to 5:00 p. m.—Vesper Hour.
7:00 to 7:45 p. m.—Gaskill Mfg. Co. and Misman Radio Co. program.
7:45 to 9:00 p. m.—Services from First Church of Christ, Scientist, remote control.
9:00 to 12:00 p. m.—Everybody's Night—

MONDAY, MAY 2

- 12:00 to 12:30 p. m.—Moore's Apparel Shop, sponsoring musical program.
12:30 to 1:00 p. m.—Wilshire Ionaco program, featuring Doris and Clarence.
1:30 to 2:30 p. m.—Special Merchants Hour
2:30 to 4:00 p. m.—Capitol Theatre Organ.
7:00 to 8:00 p. m.—Bell Post, American Legion.
8:15 to 9:00 p. m.—Piggly Wiggly Haymakers, old-time dance music.
9:00 to 12:00 p. m.—Kiwanis Frolic.
TUESDAY, MAY 3
12:00 to 12:30 p. m.—Kay & Burbank Co., musical program.
12:30 to 1:00 p. m.—Beauty talk and musical program.
1:00 to 1:30 p. m.—Kiwanis Club luncheon.
1:30 to 2:30 p. m.—Woman's Music Study Club, direction of Ruth Parkinson.
7:00 to 7:30 p. m.—Poly Hi School Oral Expression Class.
7:30 to 8:00 p. m.—Chat for Booklovers, presented by Hewitt's Bookstore.
9:00 to 10:00 p. m.—Piggly Wiggly Hour.
10:00 to 11:00 p. m.—Special Merchants Hour, featuring Majestic Ballroom Orchestra.
11:00 to 12:00 p. m.—Majestic Ballroom

WEDNESDAY, MAY 4

- 12:00 to 12:30 p. m.—Moore's Apparel Shop, sponsoring musical program.
12:30 to 1:00 p. m.—American Markets, sponsoring musical program.
1:00 to 1:30 p. m.—Wilshire Ionaco program, featuring Doris and Clarence.
1:30 to 2:00 p. m.—Rich's Quality Bakery program.
2:00 to 2:30 p. m.—Capitol Theatre Organ
7:00 to 7:30 p. m.—Church of Christ,
7:30 to 7:45 p. m.—"A Selina Sizer Program."
7:45 to 8:00 p. m.—"Lucky Jim" Investment Chat, Seaboard Bond & Mortgage Co.
9:00 to 10:00 p. m.—Special Merchants Hour, featuring Majestic Ballroom Orchestra.
10:00 to 12:00 p. m.—Elks' Frolic, Lodge No. 888.

FRIDAY, MAY 6

- 12:00 to 12:30 p. m.—Moore's Apparel Shop,
12:30 to 1:00 p. m.—American Markets, sponsoring musical program.
1:00 to 1:30 p. m.—Wilshire Ionaco program, featuring Doris and Clarence.
1:30 to 2:00 p. m.—Rich's Quality Bakery program.
2:00 to 2:30 p. m.—Capitol Theatre Organ
7:00 to 7:30 p. m.—Church of Christ,
7:30 to 7:45 p. m.—"A Selina Sizer Program."
7:45 to 8:00 p. m.—"Lucky Jim" Investment Chat, Seaboard Bond & Mortgage Co.
9:00 to 10:00 p. m.—Special Merchants Hour, featuring Majestic Ballroom Orchestra.
10:00 to 12:00 p. m.—Elks' Frolic, Lodge No. 888.

SATURDAY, MAY 7

- 10:30 to 11:30 a. m.—Capitol Theatre Organ.
12:00 to 12:50 p. m.—Kay & Burbank Co.,
1:30 to 2:20 p. m.—Capitol Theatre Organ.
7:00 to 8:00 p. m.—"Piggly Wiggly Minstrels."
9:00 to 10:00 p. m.—Special Merchants Hour, featuring Fred Rogers Hawaiian Trio.
10:00 to 11:00 p. m.—Capitol Theatre Organ,
11:00 to 12:00 p. m.—Pacific Coast Club Orchestra, remote control.



TOM SEXTON
Announcer

San Diego, California—245.8 Meters

KFSD

1000 WATTS—1220 KILOCYCLES
AIRFAN RADIO CORPORATION
U. S. Grant Hotel, 326 Broadway, San Diego. Main 8661
H. C. ROGERS, President and General Manager
TOM SEXTON, Announcer

"Kiss From San Diego"

DAILY EXCEPT SUNDAY—

6:00 to 7:00 p. m.—Nightly musical review.
10:00 to 11:00 p. m.—Harvey Ball and his U. S. Grant Hotel Orchestra
DAILY EXCEPT SUNDAY AND MONDAY—
9:00 to 10:00 p. m.—La Bohemian Dance Program.

WEEK COMMENCING SUNDAY, MAY 1, 1927

SUNDAY, MAY 1

3:00 to 4:00 p. m.—Temple service of the Theosophical University.

MONDAY, MAY 2

7:00 to 8:00 p. m.—Studio hour.
8:00 to 9:00 p. m.—First Unitarian Church program, Howard B. Bard.
9:00 to 10:00 p. m.—Mixed musical program.

TUESDAY, MAY 3

7:00 to 8:00 p. m.—Studio hour.
8:00 to 9:00 p. m.—Union Title Company "Classic Hour" program.
9:00 to 10:00 p. m.—Mixed musical program.

WEDNESDAY, MAY 4

7:00 to 7:30 p. m.—Courtesy program by Wilshire's Ionaco Company.

7:30 to 8:30 p. m.—Concert program furnished by the Theosophical University.
8:30 to 9:30 p. m.—Request Program.
9:30 to 10:00 p. m.—Request Program.

THURSDAY, MAY 5

7:00 to 8:00 p. m.—Police program, dance music and concert music.
8:00 to 9:00 p. m.—Mixed musical program.

FRIDAY, MAY 6

7:00 to 8:00 p. m.—Studio hour.
8:00 to 9:00 p. m.—Studio program.

SATURDAY, MAY 7

7:00 to 8:00 p. m.—San Diego Senior High School program.
8:00 to 9:00 p. m.—Mme. de Beauviere, "Franco-American hour."

Program Published as Submitted by the Station.



Edward J. Ludes
Announcer

San Francisco, Calif.—399.8 Meters

"At the Golden Gate"

KYA

1000 WATTS—750 KILOCYCLES
Headquarters at the Clift Hotel
CLAIR MORRISON, Mgr. EDWARD LUDS, Announcer

DAILY EXCEPT SUNDAY—

12:30 to 2:00 p. m.—Sollie Heilbronner's Clift Hotel Trio.
6:30 to 7:30 p. m.—Sollie Heilbronner's Clift Hotel Trio.
10:00 to 11:00 p. m.—Herb Meyerinck's Clift Hotel Orchestra.

WEEK COMMENCING SUNDAY, MAY 1, 1927

SUNDAY, MAY 1

11:00 a. m.—Services from Central Methodist Episcopal Church.
7:30 p. m.—Services from Central Methodist Episcopal Church.

MONDAY, MAY 2

7:00 to 7:15 p. m.—Mr. Pep's Pep Meeting for Salespeople.
7:15 to 7:30 p. m.—John D. Barry, feature writer, on "What's Happening in World."
8:00 to 10:00 p. m.—Popular Night in the Studio.

TUESDAY, MAY 3

10:30 to 10:45 a. m.—Diet and Health Talk by Dr. Buren L. Corley.
8:00 to 9:00 p. m.—Studio Program.
9:00 to 10:00 p. m.—Eduardo Abdo, Arabian tenor, and his artists.

WEDNESDAY, MAY 4

8:00 to 10:00 p. m.—Studio Program under direction of Annae K. Blotcky.

THURSDAY, MAY 5

7:00 to 7:15 p. m.—Mr. Pep's "Pep Meeting"

for Salespeople.

7:15 to 7:30 p. m.—Sollie Heilbronner's Clift Hotel Concert Trio.

8:00 to 9:00 p. m.—Weekly meeting of the "26th Squad," American Legion Program.
9:00 to 10:00 p. m.—Program featuring Benny Lipston, lyric tenor, and Bill Poole, pianist; Sarah Linden, violinist, and Dorothy Cohen, pianist.

FRIDAY, MAY 6

10:30 to 10:45 a. m.—Diet and Health Talk by Dr. Buren L. Corley.
8:00 to 9:00 p. m.—Golden Gate Hawaiians, under direction of Max Cruz.
9:00 to 10:00 p. m.—Studio Program.

SATURDAY, MAY 7

4:00 to 5:30 p. m.—Herb Meyerinck's Clift Hotel Dance Orchestra.
6:30 to 7:30 p. m.—Sollie Heilbronner's Clift Hotel Concert Trio.
8:00 to 12:00 midnight—Herb Meyerinck's Clift Hotel Dance Orchestra.



Howard I. Milholland
Announcer

Oakland, California—361.2 Meters

KGO

4000 WATTS—830 KILOCYCLES
PACIFIC COAST STATION, GENERAL ELECTRIC CO.
Phone Fruitvale 5980

DAILY EXCEPT SUNDAY—

11:30 a. m. to 1:00 p. m.—Hotel Leamington concert.

DAILY EXCEPT SATURDAY AND SUNDAY—

1:30 and 6:00 p. m.—Stock and weather reports. Base ball scores.

6:00 to 6:55 p. m.—Bem's Little Symphony Orchestra.

6:55 to 7:30 p. m.—Weather and stock reports.

- SUNDAY, MAY 1**
11:00 a. m.—First Baptist Church service, Oakland; Rev. J. Whitcomb Brougher, D.D., pastor.
4:00 p. m.—Vesper service, Grace Cathedral, San Francisco.
6:30 to 7:30 p. m.—Concert by Bem's Little Symphony Orchestra.
7:30 p. m.—Weather Bureau report.
7:35 p. m.—First Baptist Church service, Oakland; Rev. J. Whitcomb Brougher, D.D., pastor.
9:00 to 10:00 p. m.—National Broadcasting Company program, to be announced.

MONDAY, MAY 2

- 4:00 to 5:00 p. m.—Studio program.
5:30 to 6:00 p. m.—KGO Kiddies' Klub.
8:00 to 9:00 p. m.—National Broadcasting Company program, to be announced.
9:00 p. m.—Joseph Henry Jackson, "Chats About New Books."

TUESDAY, MAY 3

- 8:00 to 9:00 p. m.—(Oakland Studio)—The Pilgrims. Eveready program by National Carbon Company.
9:00 to 10:00 p. m.—National Broadcasting Company program, to be announced.
10:00 p. m.—"H M" entertains.
10:30 p. m.—Program by the Wharry Lewis Quintet.

WEDNESDAY, MAY 4

- 8:00 p. m.—(S. F. Studio)—Farm program, cooperating with U. S. Dept. of Agriculture, California Farm Radio Council, and

the California Dairy Council. Music by W. O. W. Male Trio.

THURSDAY, MAY 5

- 10:40 a. m.—Classroom instruction, Oakland Public Schools.
5:00 to 6:00 p. m.—George W. Ludlow, the "Friend to Boys."
8:00 to 9:00 p. m.—"The Merry Widow," by Franz Lehár, presented by the Paul Steindorff Radio Light Opera Company.
9:00 to 10:00 p. m.—National Broadcasting Company program, to be announced.
10:00 p. m. to 12:00 midnight—Dance music program by Jack Coakley's Band.

FRIDAY, MAY 6

- 11:10 a. m.—Prudence Penny, Home-making talk.
5:30 p. m.—Da-Ra-O, children's story-teller from Land-O-Health.
8:00 to 9:00 p. m.—Western Artist Series concert by International Four. Marie Dillon, harpist.
9:00 to 10:00 p. m.—National Broadcasting Company program, to be announced.

SATURDAY, MAY 7

- 12:00 noon—Time signal.
12:30 p. m.—Weather.
8:00 to 9:00 p. m.—National Broadcasting Company program, to be announced.
9:00 to 10:00 p. m.—Program by Ruth Hall Crandall, contralto; Hugh Williams, tenor; Grace Adams East, cornet; Eva Garcia, piano.
10:00 p. m. to 1:00 a. m.—Dance music, Wilt Gunzendorfer's Hotel Whitcomb Band.



Technical Laboratory of

N. E. BROWN

6805 S. Western Ave. Phone THornwall 0270

BUILT THE EQUIPMENT—

For the 500-Watt Broadcasting Station KMIC
We build them of any desired power.

The laboratory is equipped with lathes, drill presses, punch presses, special winding machines, special high voltage and current sets for testing, radio and audio oscillators, gain meters, etc., together with the finest collection of precision meters available and we "Know How" to use them.

Remote Control Amplifiers, Motor Generator Sets and any type of Portable or Ship Transmitter, also High Class Receivers for any purpose.

Special Transformers of any Type, Voltage and Power.

* Special Magnetic Steels, Magnetic and Resistance Wires, Repairs and adjustments of any equipment. **WHAT ARE YOUR NEEDS?**



CURTIS PECK
Announcer

San Francisco, California—428.3 Meters

KPO

1000 WATTS—700 KILOCYCLES
HALE BROTHERS AND THE CHRONICLE
J. W. LAUGHLIN, Managing Director
MRS. FREDERICK CROWE, Program Director
ALBERT J. HODGES, Technical Director
Phone Kearney 5777

"The Voice of San Francisco"

DAILY EXCEPT SUNDAY—

6:45, 7:15 and 7:45 a.m.—Daily health drill by Hugh Barrett Dobbs.
10:30 a.m.—"Ye Towne Crier."
10:45 a.m.—Cooking Hints.
12:00 noon—Time signals and Scripture reading.
1:00 to 2:00 p.m.—Rudy Seiger's Fairmont Hotel Orchestra.
2:30 to 4:30 p.m.—Baseball.
4:30 to 5:30 p.m.—Palace Hotel Concert Orchestra.
5:30 to 6:15 p.m.—Children's Hour.
6:15 to 6:30 p.m.—"Ye Towne Crier."
6:30 to 7:00 p.m.—States Restaurant Orchestra.
7:00 to 7:30 p.m.—Rudy Seiger's Fairmont Hotel Orchestra.
7:30 to 8:00 p.m.—Silent.
10:00 to 11:00 p.m.—Dance Program.

WEEK COMMENCING SUNDAY, MAY 1, 1927

SUNDAY, MAY 1

9:45 to 10:45 a.m.—Udenominational and non-sectarian church service. Uda Waldrop at the organ.
10:45 a.m.—"Ye Towne Crier," giving the U. S. weather forecast and general information.
2:30 to 4:30 p.m.—Play by play broadcast of baseball game from Recreation Park, sponsored by San Francisco Branch of the Manufacturers of White King and Mission Bell Soaps.
6:00 to 6:30 p.m.—States Restaurant Orchestra, Waldemar Lind, director.
6:30 p.m.—"Ye Towne Crier," giving general information.
6:35 to 8:35 p.m.—Palace Hotel Concert Orchestra, Cyrus Trobbe(director.
8:35 to 10:00 p.m.—Rudy Seiger's Fairmont Hotel Concert Orchestra.
10:00 to 12:00 p.m.—John Wolohan and his Californians at the Trianon Ballroom.

MONDAY, MAY 2

8:00 to 9:00 p.m.—Program by National Broadcasting Company.
9:00 to 10:00 p.m.—Studio program for Shell Company of California.
10:00 to 12:00 p.m.—KPO's Variety Hour, featuring KPO's well-known artists.

TUESDAY, MAY 3

8:00 to 10:00 p.m.—Program by Loring Club of San Francisco.

10:00 to 11:00 p.m.—Palace Hotel Rose Room Dance Orchestra, Gene James, director.

WEDNESDAY, MAY 4

8:00 to 9:00 p.m.—Program by the Atwater Kent Artists, under the auspices of Ernest Ingold, Inc.
9:00 to 10:00 p.m.—Program by National Broadcasting Company.
10:00 to 11:00 p.m.—States Restaurant Orchestra, Waldemar Lind, director.

THURSDAY, MAY 5

8:00 to 9:00 p.m.—Studio program.
9:00 to 10:00 p.m.—Studio program.
10:00 to 11:00 p.m.—Palace Hotel Rose Room Dance Orchestra, Gene James, director.

FRIDAY, MAY 6

8:00 to 9:00 p.m.—Chickering Hour, presented by Lee S. Roberts, Inc.
9:00 to 10:00 p.m.—Program by National Broadcasting Company.
10:00 to 11:00 p.m.—States Restaurant Orchestra, Waldemar Lind, director.

SATURDAY, MAY 7

8:00 to 9:00 p.m.—Program by National Broadcasting Company.
9:00 to 10:00 p.m.—Palace Hotel Rose Room Dance Orchestra, Gene James, director.
10:00 p.m. to 1:00 a.m.—Dance music.

Program Published as Submitted by the Station.

KOLSTER HEADQUARTERS SCHWABACHER-FREY CO.

736 S. Broadway, Los Angeles



SCHRADER-ROSS

EXPERT RADIO SERVICE

3206 W. Washington, Los Angeles, Cal.
Day or Night Phone EMpire 2966



NOW THE **SUPREME R-F 5** IS SOLD
FACTORY DIRECT TO YOU
5-Tube Console Complete



\$59 Built-in
 speaker, large
 tubes, 100 A.
 H. Rubber
 Case Battery
 even the inside aerial is in-
 cluded—nothing else to buy.

Selectivity :: Quality :: Distance

New Modified S. L. F. condensers allow ample separation of low wave lengths and gives absolute selectivity on all stations. Using Kellogg's laboratory grade transformers assures you of tone perfection, and for distance the utmost in sensitivity has been achieved through proper design of condensers and inductance.

Made of Finest Parts Obtainable

The Supreme—Made of the finest of material such as Kellogg, Yaxley, Carter, C. R. L., Benjamin, Bakelite coils.

Order Your Set Today

and you'll say, like everyone else that hears the Supreme, "That's the best receiver I ever heard—it's wonderful." It's simply not equalled for purity of tone or fidelity of reproduction. Remember every part is guaranteed to you—you take no chances.

THE PATTERSON FACTORY TO YOU SALES PLAN

puts a guaranteed \$155 console, 5-tube receiver in your home for cash at about \$35 less than the actual wholesale price. Volume production is the answer.

Patterson Radio Manufacturing Co.

Established 1921

239 S. Los Angeles St.—VA. 8139

Los Angeles, Calif.



"Cappy" Stan Cappel
Announcer

San Francisco, California--250 Meters

KFWI

500 WATTS—1200 KILOCYCLES
RADIO ENTERTAINMENTS, INC.
1182 Market Street, San Francisco
G. W. CATTELL, General Manager
GEO. F. B. KING, Commercial Manager
S. P. CAPPELL, Program Director

DAILY EXCEPT SUNDAY—

7:00, 7:30, 8:00 a. m.—Health Exercises.
8:20 to 9:30 a. m.—Musical Breakfast Hour.
9:30 to 10:30 a. m.—Cooking Hour.
10:30 to 12:00 noon—Studio Program.
12:00 to 1:00 p. m.—Luncheon Program.
1:30 to 5:30 p. m.—Studio Program.
5:30 to 6:00 p. m.—Theatrical Program.

SUNDAY, MAY 1

7:50 to 9:00 p. m.—Services broadcast from Fourth Church of Christ, Scientist.

MONDAY, MAY 2

6:00 to 7:00 p. m.—KFWI String Trio dinner hour program, sponsored by San Francisco firms.
7:00 p. m.—Up-to-the-minute sports by Geo. T. Davis of S. F. Bulletin.
7:10 p. m.—Report of N. Y. Institute of Financial Research.
7:13 p. m.—Police reports by S. F. Police Dept.
7:15 p. m.—Advertising talk by Elliot M. Epstein of S. F. Better Business Bureau.
8:00 to 8:15 p. m.—Dedication speeches by Bernard Linden, acting radio supervisor of the sixth district; Boyer H. Curry, president of Radio Entertainments, Inc., and R. M. Neustadt, president of the S. F. Advertising Club.
8:15 to 10:00 p. m.—Studio program.

TUESDAY, MAY 3

6:00 to 7:00 p. m.—Program by Paul's Hawaiians.

8:00 to 10:00 p. m.—Studio program.

WEDNESDAY, MAY 4

6:00 to 7:00 p. m.—De Luxe Trio program.
8:00 to 9:00 p. m.—Studio program.
9:00 to 10:00 p. m.—KFWI Hawaiian hour.

THURSDAY, MAY 5

6:00 to 7:00 p. m.—Orchestra program.
7:00 p. m.—Latest sport news by Geo. T. Davis.
8:00 to 9:00 p. m.—Studio program.
9:00 to 10:00 p. m.—Maxwell House Coffee Orchestra.

FRIDAY, MAY 6

6:00 to 7:00 p. m.—Program by Paul's Hawaiians.

8:00 to 10:00 p. m.—Studio program.

SATURDAY, MAY 7

6:00 to 7:00 p. m.—Orchestra program.
8:00 to 10:00 p. m.—Studio program.



R. M. Bitzer
Announcer

Oakland, California—303 Meters

KTAB

THE ASSOCIATED BROADCASTERS
ADA MORGAN O'BRIEN, Director

DAILY EXCEPT SUNDAY—

8:45 to 9:15 a. m.—Prayer Service.
9:15 to 9:45 a. m.—Shopping and women's hour.
5:00 to 6:00 p. m.—Children's hour.
6:30 to 7:00 p. m.—Twilight hour.
7:00 to 7:30 p. m.—Shopping hour.

son, violinist; Florence Briggs, 'cello; Virginia Treadwell, mezzo-soprano. Italian music.

THURSDAY, MAY 5

8:00 to 10:00 p. m.—Program arranged by Miss Shirley B. Irvine. Alice Davies Endries, violinist; Nelson McGee, tenor; Shirley Irvine, whistler; Ethel Irvine, accompanist; Emma Knox MacGaw, reader; Lena Minehart, pianist; Albert Brear, baritone.

FRIDAY, MAY 6

8:00 to 9:00 p. m.—Program under the direction of Harrison Ward. Katherine Donahue, contralto; Helene Mosher, soprano; Edith Kellogg, whistler; Rachel Elder Ward organist; Louise Donahue, accompanist.

SATURDAY, MAY 7

8:00 to 10:00 p. m.—Program under the direction of Carl Anderson. Carl Anderson, tenor; Ruth Waterman, contralto; assisted by Hazel M. Weimer, pianist. Will R. Hill, original poems; Beatrice Sherwood, soprano; Arthur McHoul, piano.

SUNDAY, MAY 1

9:00 to 10:45 a. m.—Prof. E. C. Lumley's Bible Class.
11:00 a. m.—Service of Tenth Avenue Baptist Church.

MONDAY, MAY 2

8:00 to 8:45 p. m.—Program under the direction of Jack Burt, baritone; Bob Brennen, tenor; Youise Polos, pianist.
9:00 to 10:00 p. m.—The Nat Vincent Hour, through the courtesy of the Nat Vincent Publishing Company of Oakland.

TUESDAY, MAY 3

8:00 to 8:15 p. m.—"Fifteen Minutes with Stamp Collectors," by Dr. Norman Shepard.
8:15 to 10:00 p. m.—Program by Mary Groo
8:15 to 10:00 p. m.—Program by Mary Groom Richards, contralto; Gwynn Jones, tenor; and Esta Marvin Pomeroy, organist.

WEDNESDAY, MAY 4

8:00 to 10:00 p. m.—Instrumenta trio; Esta Marvin Pomeroy, pianist; Marion Nichol-



"MAC"

San Francisco, California—268 Meters

KFRC

Owned and Operated by Don Lee,
California Distributor for Cadillac Motor Car.
50 WATTS — 1120 KILOCYCLES
HARRISON HOLLIWAY, Manager
FRANK MOSS, Musical Director
"Keep Forever Radiating Cheer"

DAILY EXCEPT SUNDAY—

- 7:00 to 8:00 a.m.—Breakfast concert.
- 10:00 to 11:00 a.m.—Sherman-Clay concert.
- 11:00 to 11:30 a.m.—Household Hints.
- 11:30 a.m. to Noon—Tryouts.
- 12:00 to 2:00 p.m.—Mark Hopkins Concert Orchestra.
- 4:00 to 5:30 p.m.—Mark Hopkins Dance Orchestra.
- 5:30 to 6:30 p.m.—Mac and his Gang. Stage and Screen.
- 6:30 to 7:00 p.m.—Cecilian Trio.

WEEK COMMENCING SUNDAY, MAY 1, 1927

SUNDAY, MAY 1

- 5:00 to 6:00 p.m.—Twilight Recital. Vocal and instrumental selections.
- 6:00 p.m.—Stage, Screen and Police Reports.
- 6:30 to 8:30 p.m.—Hotel Mark Hopkins Concert Orchestra.

MONDAY, MAY 2

- 7:00 to 7:30 p.m.—Western Motors Hawaiians.
- 8:00 to 10:00 p.m.—Blue Monday Jamboree.
- 10:00 to 12:00 p.m.—Eddie Harkness Mark Hopkins Hotel Dance Orchestra.

TUESDAY, MAY 3

- 7:00 to 7:20 p.m.—Russell-Colvin Trio; Mary Pasmore, violinist; Frank Moss, pianist; Herman Reinberg, cellist.
- 8:05 to 8:40 p.m.—KFRC Radio Movie Club, with Bill Hawley and "Puss" Donahoo, comedy duo.
- 8:40 to 8:50 p.m.—Prof. Herman Schnitzel.
- 8:45 to 12:00 p.m.—Eddie Harkness' Mark Hopkins Dance Orchestra.

WEDNESDAY, MAY 4

- 7:00 to 8:00 a.m.—Breakfast concert.
- 7:00 to 7:30 p.m.—"Puss" Donahoo and his Orchestra.

- 8:00 to 10:00 p.m.—Sherman, Clay & Co. presents the grand opera "Carmen" by Bizet, direction Frank Moss.
- 10:00 to 12:00 p.m.—Eddie Harkness' Mark Hopkins Dance Orchestra.

THURSDAY, MAY 5

- 7:00 to 7:03 p.m.—Western Motors Trio.
- 8:00 to 9:00 p.m.—MonaMotor Oil program.
- 9:00 to 10:00 p.m.—Organ Recital by Theodore Strong at Aeolian Duo-Art Pipe-Organ.
- 10:00 to 12:00 p.m.—Eddie Harkness' Mark Hopkins Dance Orchestra.

FRIDAY, MAY 6

- 7:00 to 7:30 p.m.—KFRC Encyclopedia Period.
- 8:00 to 10:00 p.m.—Gilfillan Neutrodyne Evening of Music.
- 9:00 to 10:00 p.m.—Program, featuring selections from grand opera "Faust."
- 10:00 to 12:00 p.m.—Eddie Harkness' Mark Hopkins Hotel Dance Orchestra.

SATURDAY, MAY 7

- 7:00 to 7:30 p.m.—Club Carlton Orchestra.
- 8:00 p.m. to 1:00 a.m.—Eddie Harkness' Mark Hopkins Dance Orchestra.

Program Published as Submitted by the Station.

CROSLY SPECIALISTS HAVE YOUR CROSLY BALANCED CHILDS' LAB., 1187 W. 24th St., L. A.

\$1

Down

Will place a—
MAJESTIC
"B" CURRENT SUPPLY
—In Your Home

Then **\$1**

A
Week

45-volt Large "B" Batteries. \$1.95 6-volt 85-Amp. Storage Batts. \$7.50
45-volt Heavy Duty "B" Bat. . . \$2.85 Ace "A" New Base Tubes . . . \$.69

Write for Special Radio Circular

ESTAB. 1904

J. C. RENDLER

Radio Parts—Kits—Sets

TRinity 4281
Los Angeles

MAIL ORDERS

625 S. Main
Opp. P. E. Depot
OPEN EVENINGS



STEPHEN I. CAYLORD
Announcer

Portland, Oregon—491.5 Meters

KGW

1000 WATTS—810 KILOCYCLES
THE MORNING OREGONIAN
"Keep Growing Wiser"

DAILY EXCEPT SUNDAY—

- 7:15 a. m.—Setting up exercise.
9:45 to 10:00 a. m.—Women's health exercises.
10:00 to 11:30 a. m.—Town Crier, weather reports, news items.
12:30 to 1:30 p. m.—Noon concert.
6:00 to 7:00 p. m.—Dinner Concert.
7:30 to 7:45 p. m.—Weather and market reports.

WEEK COMMENCING SUNDAY, MAY 1, 1927

SUNDAY, MAY 1

- 10:55 a. m. to 12:30 p. m.—Morning services from the St. Stephen Pro-Cathedral.
7:30 to 9:00 p. m.—Evening services from the Hinson Memorial Baptist Church.
9:00 to 10:00 p. m.—National Broadcasting Co., Inc., program from San Francisco.
10:00 to 11:00 p. m.—Public Service Little Symphony Orchestra.

MONDAY, MAY 2

- 7:00 to 7:30 p. m.—Educational talk and music.
7:45 to 8:00 p. m.—American Express Co. travel talk.
8:00 to 9:00 p. m.—National Broadcasting Company program from San Francisco.
9:00 to 10:00 p. m.—Venetian Hour.
10:00 to 12:00 midnight—Dance music by Cole McElroy's Spanish Ballroom Dance Band.

TUESDAY, MAY 3

- 2:00 to 3:00 p. m.—Women's Matinee.
7:00 to 9:00 p. m.—Educational program.
9:00 to 10:00 p. m.—National Broadcasting Company program from San Francisco.
10:00 to 12:00 p. m.—Dance music, featuring Herman Kenin and his orchestra.

WEDNESDAY, MAY 4

- 7:00 to 8:00 p. m.—Utility Service and Concert Trio, with soloist.
8:00 to 9:00 p. m.—Concert by Maxwell House Coffee Orchestra and vocal artists.
9:00 to 10:00 p. m.—National Broadcasting Company program from San Francisco.
10:00 to 10:30 p. m.—Bridge game.

THURSDAY, MAY 5

- 6:00 to 7:00 p. m.—"Live Where You Play Hour."
7:00 to 7:30 p. m.—Music by concert trio.
7:45 to 8:00 p. m.—Lecture, given under the auspices of the Catholic Truth Society of Oregon.
8:00 to 9:00 p. m.—Vaudeville entertainment.
9:00 to 10:00 p. m.—National Broadcasting Company program from San Francisco.
10:00 p. m. to 12:00 midnight—Cole McElroy's Spanish Ballroom Dance Band.

FRIDAY, MAY 6

- 2:00 to 3:00 p. m.—Women's matinee.
7:00 to 7:25 p. m.—Children's program.
7:25 to 7:30 p. m.—Fishing and Hunting talk.
7:30 to 8:00 p. m.—Albers Bros. Poultry talk.
8:00 to 9:00 p. m.—Concert by the Mission Bell Orchestra with soloists.
9:00 to 10:00 p. m.—National Broadcasting Co. program from San Francisco.
10:00 to 10:30 p. m.—Musical program.
10:30 p. m. to 12:00 midnight—Weekly frolic of the Keep Growing Wiser Order of Hoot Owls.

SATURDAY, MAY 7

- 7:00 to 7:30 p. m.—Concert Trio.
7:45 to 8:00 p. m.—Music.
8:00 to 9:00 p. m.—National Broadcasting Company program from San Francisco.
10:00 to 12:00 p. m.—Dance music, featuring Herman Kenin and his orchestra.

KOLSTER HEADQUARTERS SCHWABACHER-FREY CO.
736 S. Broadway, Los Angeles

SILVER THE KING

24 Kt Gold
Pure Silver
Soft
Copper

Gosilco Super Aerial Wire Gold over Silver on Copper

DX Reception Assured—30% More Volume—Clearer Tone—20% Sharper Tuning—Permanently Efficient.

No. 14 Gauge, 100 ft. \$3.00—75 ft. \$2.50—50 ft. \$1.75
Soft Round Bus, 10c, 2 ft. length. Flexible Bus and Loop, 5c ft.
Sold by Dealers or direct, prepaid or C. O. D. Checks Accepted.
Your Aerial is the life of your set. Why not have the best?

GOSILCO RADIO PRODUCTS CO.

Patent Applied for 320 Marbrisa Ave., Huntington Park, Calif.
A. J. TOBEY CO., Distributors

FOR RESULTS

USE AN



BETTER TONE QUALITY!

Reproduces all notes, high and low, with equal clarity

MORE DISTANCE!

Australia on the Loud Speaker

ABSOLUTE SELECTIVITY!

Locals do not interfere with DX

LESS STATIC!

By its very principle the Infradyne tends to cut down static.
Our men are experts in the construction and use of the Infradyne

E. M. SARGENT, INFRA-DYNE INVENTOR, RECOMMENDS
THE

ELECTRIC LIGHTING SUPPLY CO.

C. F. BAKER

216 W. THIRD ST., Between Spring and Broadway

Los Angeles

Open Saturday Evenings

TRinity 3781



LUTHER J. JENSEN
Announcer

Seattle, Washington—454.3 Meters

KFOA

1000 WATTS—660 KILOCYCLES
Owned and Operated by Rhodes Department Store
Arcade Square, Seattle, Washington
P. B. GALE, Station Manager
ROBT. PIERCE, Station Engineer
ARTHUR W. LINDSAY, Program Director and
Announcer
MAX WELLS, Asst. Announcer

DAILY EXCEPT SUNDAY—

12:00 to 12:15 p. m.—Local Produce News.

12:15 to 12:30—Farm News.

2:00 to 2:30 p. m.—Homemakers' and Shoppers' Bureau.

WEEK COMMENCING MONDAY, MAY 2, 1927

MONDAY, MAY 2

- 6:00 to 7:00 p. m.—Radio Studios Trio.
7:00 to 7:30 p. m.—Harold Weeks in Popular Song Program.
7:30 to 8:00 p. m.—Cruise of the Sound Ferry Line Buccaneers.
8:00 to 8:30 p. m.—Industrial news by Manufacturers Association of Washington.
8:30 to 9:00 p. m.—KFOA Radio Movie Club.
9:30 to 11:00 p. m.—Bonnie Brae Dance Orchestra, remote control.

TUESDAY, MAY 3

- 12:30 to 1:30 p. m.—Kiwanis Club Luncheon program from the Olympic Hotel.
7:30 to 8:00 p. m.—Pitchford Sisters.
8:00 to 8:30 p. m.—KFOA Radio Bridge Game.
8:30 to 9:30 p. m.—Cheasty's Inc. presenting Cheasty's Male Quartet.

WEDNESDAY, MAY 4

- 12:30 to 1:30 p. m.—Rotary Club Luncheon program from the Olympic Hotel.
7:00 to 8:00 p. m.—Hugh Baird's Ford-O-Crat Entertainers.
9:00 to 10:00 p. m.—Maxwell House Coffee Orchestra and soloists presented by Cheek-Neal Coffee Co. from KGW, Portland.

THURSDAY, MAY 5

- 12:30 to 1:30 p. m.—Shrine Club Luncheon program from the Chamber of Commerce Bldg.
6:30 to 7:30 p. m.—E. R. Butterworth & Sons Orchestra.

- 7:30 to 8:00 p. m.—Sunde & d'Evers, Tent-makers.
8:00 to 8:30 p. m.—Doc Proells "Cross-Eyed Family."
8:30 to 9:30 p. m.—Cheasty's Inc. Trio De Luxe.
10:30 to 12:00 midnight—Bonnie Brae Dance Orchestra.

FRIDAY, MAY 6

- 12:30 to 1:30 p. m.—Members Council Luncheon program from Chamber of Commerce Bldg.
6:45 to 7:00 p. m.—Automobile Club of Washington.
7:00 to 8:00 p. m.—Sherman Clay & Company studio program.
8:00 to 9:00 p. m.—The Mission Bell Concert Orchestra presented by the Los Angeles Soap Co. from KGW, Portland.
9:00 to 10:30 p. m.—Burke & Farrar's Kirkland Serenaders.
10:30 to 12:00 p. m.—Weekly Frolic of the "Keep Growing Wiser Order of Hoot Owls," broadcast from KGW, Portland.

SATURDAY, MAY 7

- 7:00 to 7:30 p. m.—Children's program on the Big Blue Mona Motor Bus to KGW and KHQ.
8:30 to 9:30 p. m.—Cheasty's Inc. Dance Orchestra.
SUNDAY, APRIL 3
2:00 to 3:00 p. m.—"Reo Flying Cloud Concert Orchestra" presented by the Lamp-ing Motor Co.

Program Published as Submitted by the Station.

A PHILCO INSTALLED IN YOUR HOME—WE. 9065

PALMER RADIO LABORATORY

Established 1923

Specializing in

SUPER-HETERODYNES AND INFRADYNES

Intermediate Transformers Made and Calibrated

Also all other types of receivers made to operate efficiently

Satisfaction Guaranteed or No Charge

Advice Free

Open Evenings Till 9 P. M.

Courtesy to All

4529 S. Vermont, Los Angeles. Phone VERmont 7883

"A" and "B" POWER For Your Radio Set



WILLARD "A" POWER UNIT



WILLARD "B" POWER UNIT

Each of these units represents the best in engineering in the Power Unit field. Workmanship and materials are of the highest quality. No hum or distortion from them. They connect with the house lighting circuit.

Ask about our Time Payment Plan. Why not buy them now?

Willard Service Stations

OF SOUTHERN CALIFORNIA
OR
YOUR NEAREST RADIO DEALER

OUR EXCEPTIONAL OFFER

*Get Two Great Magazines For Almost
the Price of One!*

SAVE \$2.00

RADIO NEWS—The National Radio Monthly
with the largest circulation and following of
any Radio publication in the world—

or
SCIENCE AND INVENTION

or
AMAZING STORIES

Regular Price \$2.50

and

RADIO DOINGS—The Leading Pacific Coast
Radio Weekly—the Radio authority of the
Pacific Coast—

Regular Price \$3.00

These leaders in their respective fields—the great National
Monthly, Radio and Scientific Magazines and the great
Pacific Coast Weekly—

BOTH NOW FOR \$3.50

You Can't Afford to Pass This Offer By

Attach Money Order, Check or Currency to the Coupon and Mail to Us
Right Now

RADIO DOINGS,
407 E. Pico Street,
Los Angeles, Calif.

Or Conger & Moody,
Sharon Bldg., San Francisco, Calif.

Send me **RADIO DOINGS** and "**RADIO NEWS**," **SCIENCE &
INVENTION** or **AMAZING STORIES** for one year. I enclose \$3.50.

Name.....

Address.....

City and State.....

(Specify **NEW** or **RENEWAL**)

R-1

Bert R. Hassler

B. R. Hassler, although a recent comer to Southern California, is as well known to the trade in this locality as in San Francisco.

For two years Hassler was Pacific coast sales manager for the Colin B. Kennedy Company, and some three and



a half years ago he was advanced to the position of general sales manager for the same company, with headquarters in St. Louis.

Last July he came back to the coast and established an office in San Francisco, representing the L. S. Brach Company and the Valley Electric Company.

Hassler has recently moved to Los Angeles and opened an office at 305 Allied Crafts Building, and has added the Sentinel line to those already carried.

The newest item in the Sentinel line is one of particular interest. It is an

automatic switch or relay, which, in addition to connecting and disconnecting the B eliminator and A battery charger, also automatically stops the charging process when the battery is fully charged. This makes the whole power supply equipment entirely automatic, and relieves the set owner of all care expecting the occasional adding of distilled water to the battery.

\$1 Get Distance Amazing Discovery For Any Radio

Why confine your radio programs to a few local stations when the expensive concerts, dance music and lectures of hundreds of big cities are ready for you? With every order for our treatise, "The Distance Getter," we include FREE our wonderful new Distance Transformer. Tune your set according to our special instructions and presto — note the distant stations roll in!

Satisfaction Guaranteed

Your money instantly refunded if you are not satisfied. The attachment furnished FREE with the "Distance Getter" alone is worth the price.

"Results beyond all expectations. Cuts through local stations like a knife," — writes Galloway of Chicago, Ill.

"Send three more for my friends. I get Denver and Calif. easily," says Homes, Palos, Ill. "I also get stations in Canada, Chicago, Miami, all on loud speaker with sufficient volume to be heard all over the house," says Pecker of Swampscott, Mass.

"Thus far I've pulled in many stations I formerly only read about" Praelid of Ohio.



Hazleton Laboratories.
4554 Malden St., Dept. 241, Chicago, Illinois

- Send me "The Distance Getter" postpaid.
 Enclosed find \$1 (M. O., stamps or check).
 Send C. O. D., plus small postage added.

Name _____

Address _____

City _____

State _____

MAIL COUPON TODAY

Broadcasters' Digest

As this issue goes to press we understand that several changes are likely to be made in wave length assignments to certain of the Coast stations. Radio Inspector Linden of the Sixth District reports that no official information is at hand, however, and as soon as such advices are obtainable, the necessary changes will be made in the time tables and programs in Radio Doings.

Meanwhile KMIC, Inglewood, has announced that they are changing to 261 meters. By the time the programs of this issue become effective it is probable that other wave-length changes will have been made. We beg the indulgence of our readers until such time as we can announce authoritative assignments.

Inasmuch as the Los Angeles Evening Express operates KNX radio station it is only fitting that the frolic held every Saturday night should be known as the Midnight Express. Just as soon as the Cocomanut Grove dance music ends the frolic gets under way, and Harold Isbell, Town Crier of the Night, acts as engineer for the train that skips about the country on a hurried trip.

Fans who have written in or wired from distant points are visited by the Midnight Express. Recently Eddie Peabody, banjoist extraordinary, spent fully an hour playing popular numbers to the great delight of late listeners.

Frank N. Murphy, Chief Electrical Engineer for Warner Brothers' Motion Picture Studios Radio Station KFVB, is not the man to allow himself to be baffled by obstacles—he simply surmounts them.

One night recently, while KFVB was broadcasting the dinner hour program, the generator broke down and for fifteen minutes the station was silent. That it was not longer was due to Mur-

phy's presence of mind and ingenuity. He immediately utilized the generator of Warner Brothers' Portable Station 6XBR, and successfully carried on the program till midnight, the appointed time of signing off.

This is the first time as far as it is known that a broadcast station has been operated by a gasoline generator.

On Tuesday, May 10, during the 8 to 9 o'clock program from KHJ, Dr. Ralph L. Power, radio editor of The Times, will step from his role as scribe and make his debut as a radio playwright for the time being.

The little one-act play of ten minutes will be full of humor and mirth with the title roles being taken by Uncle John, KHJ announcer, and Elvia Allman, program arranger of the station.

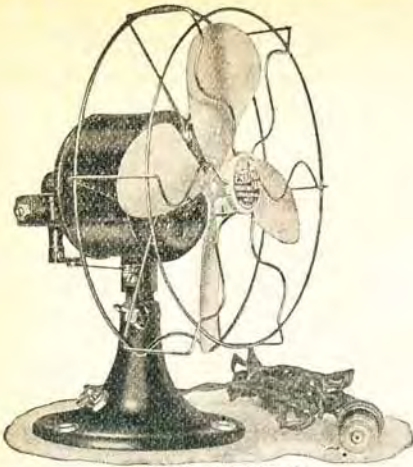
"An Incident in a Radio Studio," is the title of the playlet written by Dr. Power, whom many will remember as radio announcer for The Examiner three or four years ago, when that newspaper broadcast its own programs through KWH, and later over KFI, as a remote control line.

Our associate, Major Lawrence Mott of KFWO takes exception to our statement in a recent issue that Mrs. Mary Elizabeth Carter of Station KFVD was the only woman studio manager, announcer and accompanist on the Coast, claiming that Miss Frances Hewitt of KFWO was the first woman to have entire charge of a studio in the West, if not in the entire country. We grant you and the charming Miss Hewitt this point, Major, but we are still of the opinion that you have not burdened Miss Hewitt with the duties of Chief Announcer, in addition to her musical work, which is the special distinction claimed for Mrs. Carter by Mr. McWhinnie, the owner of the Venice station.

Don't Get Hot

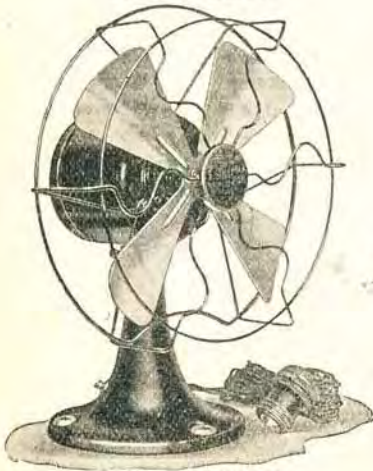
*When it costs so little
to keep cool with*

Eskimo Fans



ESKIMO MODEL 20
*Two speed, 10 inch Oscillating Fan.
Beautiful in appearance. Fully guaranteed.
Noiseless in operation. Does not creep.*

PRICE \$11.00

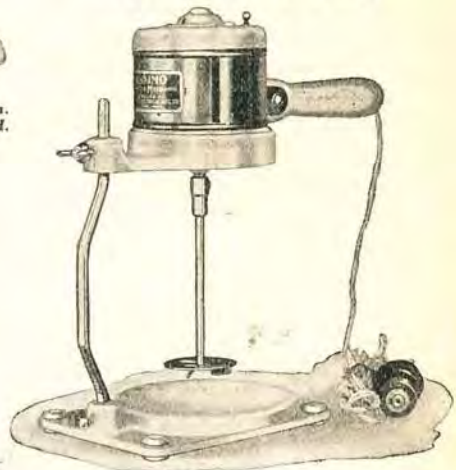


ESKIMO MODEL 10
*Eight inch, non-oscillating, single speed
Fan. It is priced to fill the big demand
for a fan at a price every one can afford.*

PRICE \$6.00

Also made in full 9 inch blades.

PRICE \$8.00



ESKIMO KITCHEN MECHANIC

*Useful device for the housewife. Ideal
for mixing drinks, mayonnaise and dress-
ings, whipping cream, beating eggs, and
performs many other operations formerly
done by hand.*

*Finished in grey and white enamel. Ad-
justable stand, two-piece plug.*

PRICE \$8.00

**Mail or phone your order. Imme-
diate shipment from stock. Regu-
lar trade discounts.**

*Comfort for the Consumer
Profit for the Dealer*

PACIFIC WHOLESALE INC.

WALTER M. FAGAN
PRESIDENT

1310-1320 S. San Pedro St. — WEStmore 4358 — Los Angeles

Timely Trade Topics

The Victor Dealers of Southern California gave a banquet at the Mary Louise Friday evening, April 22nd, in honor of Mr. Forbes, general sales manager of the Victor Talking Machine Company.

Mr. Forbes is visiting the Victor dealers of Southern California with Mr. P. C. Clay, President of Sherman-Clay & Company, and Mr. Otto May, the Pacific Coast Manager of the Victor Talking Machine Company.

Due to ill health, Mr. G. Ellis, Manager of the Los Angeles branch of Sherman-Clay & Company, has retired temporarily from active business. Everyone wishes Mr. Ellis a speedy recovery.

Mr. R. H. Cook has been appointed the Los Angeles Manager to fill the vacancy left by Mr. Ellis.

Mr. Cook is familiar with all phases of the Radio and Talking Machine business, as he has been associated with Sherman-Clay & Company for many years.

The Conneway Electric Laboratories, manufacturers of the well known line of Magnatron Radio Tubes and of Magnium Oxide coated filament used in many other radio tubes, has just announced the addition of a High Mu tube to their line, the Magnatron DC-240.

The Magnatron DC-240 has been designed for sets employing resistance or impedance coupled audio amplification. It is a High Mu Amplifier and Detector Tube.

The Atwater Kent sales convention for dealers in Southern California will be held July 20. Some of the most prominent men of the Atwater Kent organization will be present. The place of meeting will be announced at a later date.

Mr. L. L. Ryder, Chief Technician of Sherman Clay & Company of San Francisco, gave a unique demonstration at the Yale banquet, Wednesday, April 20th, in the St. Francis Hotel of what could be accomplished with a short wave receiver.

He tuned in the Schnectady station, WGY, that was broadcasting the program of the Yale Club of New York. Ex-President Wm. H. Taft was the principal speaker. His voice came in clearly and with sufficient volume, so that everyone in the room was able to hear perfectly.

The Magnavox Company have opened a branch warehouse at 1122 Santa Fe avenue, Los Angeles. C. E. Flynn, Direct Factory Representative, will have charge of distribution.

A. E. Schifferman, who everyone in the trade in Southern California knows, is now manager of the Guarantee Collection Agency, 270 Chamber of Commerce building. He will be pleased to see any of his old friends at the above address.

The Howard Radio Distributing Co., of 6229 Banner St., Hollywood, Calif., has been appointed Southern California distributors for the Trav-Ler Portable Receiver. Mr. Stewart reports that the set has met with instant success and is in great demand by both the dealers and the radio fans.

The Philadelphia Storage Battery Co., manufacturers of the well known batteries and the Philco Socket Power Unit have opened a branch factory at 1149 South Wall street. Mr. Harry Fore, their Southern California representative, is in charge. Harry Gester, well known to the radio trade, has recently been added to their sales force.

Timely Trade Topics

At the annual election of officers of the Radio Manufacturers Agents' Association of Southern California the following were elected to serve for the next year: W. D. Scott, President; Lombard J. Smith, Vice President; F. W. Falck, Second Vice, and A. L. Farquharson, Secretary.

The Acme Electric and Manufacturing Company of Cleveland, Ohio, one of the largest Manufacturers of Radio Battery Chargers, "B" Power Supply Units, Control Switches, AB Socket Power Units and Power Packs have moved from their temporary address, which was taken at the time their factory was destroyed by fire last October.

The factory building destroyed by fire has been put in the best of condition with modern construction and new equipment has been installed which was specially designed to expedite and accommodate the large volume of business which this concern receives on their products.

The Utah Radio Products Company are coming out with three new speakers, a cone listing at \$30, and two beautiful cabinet speakers, one listing at \$65, the other at \$125.

J. J. Perlmuth has been appointed Southern California representative for the Raytheon Manufacturing Company. He has also taken on the Thorola line. The Raytheon Company announce that their new policy will be to sell only through authorized jobbers.

The J. C. Lester Radio Shoppe, 452 South Broadway, Los Angeles, now has on display a new 6-tube portable set with power tube which Lester has been experimenting with for some months and which he claims will give excellent results.

Harold H. Cluff, general sales manager of the Kemper Radio Corporation, is now on a ten-day tour through the Pacific Northwest visiting his distributors in that territory.

Sidney Spector, representative for Acme Apparatus; Centralab and Alden Manufacturing Company, spent the last week in Los Angeles.

The Gold Seal Electrical Company, Inc., makers of Gold Seal Radio Tubes recently announced the appointment of Mr. William R. Davis as General Sales Manager.

Mr. Davis brings to this important position a broad knowledge of the radio field in which he was one of the pioneers, and an exceptionally specialized experience in its sales problems and procedure.

Thoroughly familiar with selling conditions, both here and abroad, Mr. Davis should prove a tower of strength to this organization whose noteworthy success and rapid growth offered him the broadest opportunity to demonstrate his unusual ability.

Parmelee-Dohrmann Company of San Diego has been appointed Crosley and Kolster Dealer. They are carrying a complete stock of all models manufactured by the Crosley and Kolster Companies.

Parmelee-Dohrmann Company are being supplied by the H. Earle Wright Company, Inc., California distributors of Crosley and Kolster.

Mr. Garrett Arnold, who is business Sales Manager of Kierulff and Ravenscroft & Company for the last three years, has been appointed the Manager of the San Francisco House. He left for San Francisco last week to take over his new duties.

This file including all text and images are from scans of a private personal collection and have been scanned for archival and research purposes. This file may be freely distributed, but not sold on ebay or on any commercial sites, catalogs, booths or kiosks, either as reprints or by electronic methods. This file may be downloaded without charge from the Radio Researchers Group website at <http://www.otrr.org/>

Please help in the preservation of old time radio by supporting legitimate organizations who strive to preserve and restore the programs and related information.