

# RADIO DOINGS

RED BOOK OF RADIO

10¢  
WEEKLY

*The Radio Authority*  
*Pacific Coast*

Gifted: EDWIN A. GILBERT  
2801 W. 29th Place  
1-30-28



The Luboviski Trio—KNX Feature

Vol. X

MARCH 13-19, 1927

No. 11

# Tone Clarity . . .



K-1, Formerly \$27.50  
NOW \$25.00



K-3, Formerly \$19.75  
NOW \$18.50

## *The final proof of* **ACME SUPERIORITY**

If you appreciate the vast difference between the Circus Band and the Philharmonic Orchestra, then you will at once realize why the Acme Loudspeakers have won an outstanding recognition from discriminating radio owners.

ACME APPARATUS COMPANY engineers worked for six years and built 320 speakers before they released Models K-1 and K-3, illustrated on this page. Their skill and experience are at your command. No matter how good your set, Acme apparatus will make it better.

Acme Eliminators  
are worthy members of  
the Acme family

Distributed by

## **H. Earle Wright, Incorporated**

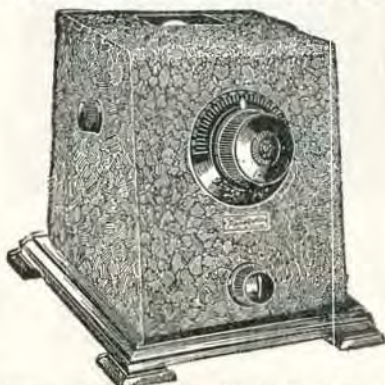
123 Second Street  
SAN FRANCISCO

415 East Eighth Street  
LOS ANGELES

# Double Your Stations

Penetrate Interference

Cut Through Locals by Adding Penetrola to  
Your Present Radio Set



Penetrola transforms your old radio set into a powerful, up-to-date receiver. It gives greater range and volume and real selectivity. It stops radiation and "blooming." It is easily attached and operates with any set.

PRICE  
**\$35**

Penetrola is manufactured by the makers of the Walbert Isofarad Receiver—the most advanced radio receiver on the market. If you do not already own a radio receiver, let us tell you about the Isofarad with Penetrola built in.

## Walbert Penetrola

If Your Dealer Can't Supply You, Mail the Coupon

**C. W. SMITH CO.**

*"The Home of Utah Speakers"*

Gentlemen:

Enclosed please find check or money order for \$35 for which please send me one Walbert Penetrola. If at the end of 3 days it does not perform to my entire satisfaction I will return it and you will refund my money.

Loop Type     Outdoor aerial type  
(Check which type of set you own)

Send me complete information about the Walbert Isofarad receiver without obligation.

NAME.....

ADDRESS.....

1125 Wall St.    LOS ANGELES, CAL.    WEStmore 3291



# Radio's Best Wire

"FROM THE GROUND UP"

*The Choice of*  
Amateurs and Experts

## Jobbers—

We have complete Aerial Kits and a large stock  
of Copper, Tinned and Enamel Wire

*We Can Fill Your Orders Immediately*

CORNISH WIRE CO., NEW YORK, N. Y.

Factory Representatives

**JAMES P. HERMANS CO.**  
585 Mission St., San Francisco  
Douglas 2952

**MARSHANK SALES CO.**  
224 E. 16th St., Los Angeles  
WE. 8078

New York Office  
J. W. HASTIE  
155 East 42nd Street  
Vanderbilt 4661

Chicago Office  
A. G. RUDOLPH  
500 N. Dearborn St.

San Francisco Office  
CONGER & MOODY  
Sharon Building  
Kearney 2483

# Radio Doings

Trade Mark Reg. U. S. Pat. Off.

407 East Pico Street, Los Angeles, Calif.

## "The Red Book of Radio"

H. C. CHARLES  
Editor

Phone Westmore 1401

KENNETH G. ORMISTON  
Technical Editor

J. S. MILLER  
Associate Editor

MAJ. LAWRENCE MOTT  
Associate Editor

(Entered as second-class matter, Nov. 25, 1922, Los Angeles, Cal., Post Office, under Act of March 3, 1897.)  
Copyright, 1926, by Horwood Publishing Co.

Issued Weekly. Ten Cents a Copy, Three Dollars a Year. Canada and Foreign Countries, \$3.50 per Year.

Vol. X      Los Angeles      MARCH 12, 1927      San Francisco      No. 11

## CONTENTS

	PAGE
Radiograms - - - - -	13
Prize Letter - - - - -	14
J. F. Dillon, Federal Radio Commissioner - - - - -	15
Nude Swimming Prize Letter - - - - -	16
Major Mott Replies to Senator Blease - - - - -	16
Woman's Page - - - - -	18
Koo-Koo Kolyum - - - - -	19
Radio Topics of the Day - - - - -	20
Picked Out of the Air - - - - -	21
The Trouble Shooter - - - - -	22
DX Club - - - - -	27
Broadcast Changes - - - - -	28
Time Tables - - - - -	29 to 36
Schedule of DX Stations - - - - -	38
Detailed Programs - - - - -	42 to 75
Timely Trade Topics - - - - -	77
Both Sides of the "Mike" - - - - -	78

### ONLY \$3.00 A YEAR

Have RADIO DOINGS mailed to your home every week. Fill out blank below. Either mail to us, or your dealer will be glad to take care of it for you. Please indicate whether NEW or RENEWAL.

HORWOOD PUBLISHING CO., 407 E. Pico St., Los Angeles,  
CONGER & MOODY, Sharon Building, San Francisco, Calif.

Gentlemen: I enclose \$3.00, for which send me RADIO DOINGS for one year.  
NEW—RENEWAL.

Name \_\_\_\_\_

Address \_\_\_\_\_

## No Longer Need PRICE Tone Quality, Power, and



Model R-99

1. Ample power, delivering up to 180 volts at 50 milliamperes.
2. Especially recommended for sets using the new 171 or 210 power tubes.
3. Uses improved type Raytheon tube.
4. Guaranteed against electrical and mechanical hum.
5. Selective switch for high and low powered receivers.

### It's Convenient, Too—

Snap the 3-position switch—"Low" for locals or "High" for distance—and its center positions cuts off all power. With a Sterling "B" Power you make adjustments once, and then your set gets all the power it needs. All connections are on the back of the Sterling—out of the way.

**Made by Sterling and Backed up by**

*Sales Representatives*

## DETSCH & COMPANY

This Sterling "B" Power, operated from the lighting circuit, is the composite design of thousands of radio men who were asked for their recommendations for building the perfect battery eliminator.

## Deny You This Permanency

# Sterling

## B-POWER

For tone quality, voltage control, reserve power and dependable performance under any conditions, Sterling "B" Powers have proved themselves not only capable of doing the work of "B" batteries, but of providing a source of power which insures the most satisfactory operation of the radio set.

### LIST PRICE \$33.75

(Less Tube)

**Thank You, Mr. Budworth!**

The unsolicited letter quoted below is typical of the satisfaction expressed by hundreds of users of Sterling "B" Power Units.

Los Angeles, Cal.  
January 23, 1927.

The Sterling Manufacturing Co.,  
Cleveland, Ohio.

Dear Sir:

*I consider Sterling R-99 "B" Power Unit to be the finest eliminator manufactured today, as proved on my Grebe Synchrophase set.*

*Not only does it give more power than is needed, but the adjustment of voltages gives an improvement in tone quality greater than I thought could be possible.*

*There is no tendency to "motor boating" under heavy load nor is it necessary to fool with the adjustments for power tubes or intermediate stages to keep the Sterling operating right.*

*My hat's off to you on your success.*

Very truly yours, L. L. BUDWORTH,  
646 Fairview Ave., Arcadia.

## 20 Years of Electrical Experience

SAN FRANCISCO — 555 TURK STREET  
LOS ANGELES — 1939 EAST 16th St.

# CeCo "K"

# New

MAP OF U.S. SHOWING  
CROWDED CONDITION  
OF BROADCASTING  
STATIONS



## Los Angeles CeCo Dealer

- J. C. Rendler  
625 S. Main
- Philco Sales & Service  
1514 S. Hope
- Standard Radio  
417 W. Pico
- Walker Radio  
5835 S. Vermont
- Collinge Hardware Co.  
3425 S. Vermont
- Glen H. Demer  
6507 S. Kansas
- De Hoog Bros.  
6120 S. Broadway
- H. H. Walker  
1323 Venice Blvd
- Sturgis Music  
4713 S. Broadway
- Neilson & Nelson  
4320 Avalon
- Tivoli Radio Shop  
4204 S. Central
- Wilkins Radio Mfg. Co.  
5317 S. Central
- Phair Radio Co.  
242 E. Florence
- Henderson Radio Store  
3805 Whittier Blvd.

# TUBES INCREASE SELECTIVITY

*Dial the Station You Want--  
You'll Get It Every Time!*

CeCo "K" sharp tuning tubes help you to single out the station you want from among the multitude, and enjoy perfect reception for the first time. Voices will come in clear and music as melodious as if there were only one station on the air instead of many. Go distance hunting and

they will help your radio reach out hundreds of miles farther than ever before. Hear these and other CeCo "K" tube advantages at your dealers! Learn all about the CeCo tube family. Go today without fail. They cost no more—you must be satisfied—that's guaranteed.

*A. J. Tobey Co.*

Radio Accessory Jobbers

15th and Hope Sts.

Westmore 4038

## Out-of-Town CeCo Dealers

- Johnson Auto Supply  
765 Atlantic Blvd.
- Hines Radio  
7322 S. Broadway
- Atwater Radio Shop  
3208 Glendale Blvd.
- Holland Electric Shop  
5632 Pasadena Ave.
- McNeil Music Co.  
5711 Pasadena Ave.

## HOLLYWOOD

- Cutler Radio  
930 N. Western
- Doran Electric Shop  
7515 Sunset Blvd.
- Hetzl Radio Service  
8303 Santa Monica
- Hollywood Elec.  
6656 Hollywood Blvd.
- Hollywood Radio  
709 N. Western
- Carmel Radio  
8165 Santa Monica Blvd.
- Melrose Radio  
5663 Melrose
- Lovinger-Melrose Radio  
4426 Melrose

- CULVER CITY, H. E. Blunt  
6808 Putman
- PASADENA, Thomas & Summerville, 41 N. Broadway
- Webster Electric Garage  
100 E. Union
- LONG BEACH, Klem Radio,  
Cor. 4th and Locust
- Wilmington Varsity  
716 W. Anaheim,  
Wilmington
- LANKERSHIM, Lankershim  
Music Co., Lankershim  
W. L. Bain,  
5241 Lankershim Blvd.
- VAN NUYS, Van Nuys Music  
Co.  
Marsden Electric
- REDLANDS, Dale E. Sliger  
State and Third St.
- BELLFLOWER,  
H. L. Peterson Shoppe  
Pacific and Mayne
- SAN DIEGO, College Service  
Maryland Auto Supply Co.  
Seventh and F  
Park and El Cajon
- E. C. Grube  
50th and Imperial

- ALHAMBRA, Baird Radio  
Shop, 226 W. Main St.
- ANAHEIM, Caverley Radio  
217 W. Center
- CARLSBAD  
Carlsbad Pharmacy
- EL CAJON, El Cajon Electric
- ELSINORE, Elsinore Plumbing  
& Electric
- GARDEN GROVE, W. E. Ashley
- BREA, Bennett's Radio
- BANNING, Daly Elect. Store
- POMONA, Falls Tire & Battery Co.  
201 East 2nd St.
- INGLEWOOD, Inglewood Mercantile, 120 N. Commercial  
Street
- AVALON, Avalon Radio,  
607 Crescent
- HUNTINGTON PARK, H. I. "Radio" King,  
116 E. Irvington
- DOWNEY, Darnell Electric  
Shop, 1182 Crawford St.
- TUSTIN, Williams Super Service, Coast Highway

# To Have The Best Receiver

Buy the Parts and Build It Yourself

USE ANY OF THESE—THEY ARE ALL GOOD

**BOULDERADIO EIGHT-IN-LINE UNIT**, Two Tuning Condensers, Rheostat, Two Dials, Midget Condenser and Front Panel, are all that is necessary to complete one of the most selective supers. Beautiful tone and lots of volume. Only nine simple connections to make to unit. List Price of Eight-in-Line Unit—\$95.00.

---

**MADISON MOORE "One Spot" Transformers** are here. No more harmonics. Get a line on these—one of the biggest improvements of the year.

---

Look over the **630 Complete Kit of Parts for the SILVER SHIELDED SIX**. Kit includes all Specified Matched Parts for the Set. Completely Shielded—using the famous 220 Audio and 221 Output Transformers, \$95.00—A Set Good for Years.

---

The Kit of Parts for the **KARAS EQUIMATIC** lists at \$60.20, and will produce a Set mighty hard to beat. Karas' latest.

---

All Parts for the **IMPROVED INFRADYNE** as Specified by Inventors now here. Complete Data in the Official Manual—25c Send for it Now.

---

DEALERS: Park Next Door at Our Expense

## Radio Supply Co.

WHOLESALE

920 S. Broadway

VA. 6063

Los Angeles

New 1927 Catalogue Now Ready—Send For It



# Changes Are Made

Every day in Radio—and to keep your set abreast of the time—you will need new parts. The largest up-to-date work of parts is at 920 South Broadway. Have your regular weekly pick up what you need.

Aaleo Loops  
Accuratune  
Acme Apparatus  
Acme Trickle Chargers  
Advance Crystals  
Aero Products  
Aerovox Wireless Products  
Alden Mfg. Co. Parts  
All-American Products  
Amertran Products  
Amperites  
Amsco Condensers  
Arteo Coils  
Balkite Chargers, Etc.  
Benjamin Elec. Mfg. Products  
Boulderadio Eight-In-Line Super Unit  
Branston Coils  
Bremer-Tully Products  
Camfield Coils  
Carborundum Products  
Cardwell Condensers  
Carter Products  
Ceco Tubes  
C R L Var High Resistances  
Chicago Kester Solder  
Clarostat  
Continental Condensers  
Crescent Transformers  
Daven Radio Parts  
DeJur Rheostats  
DeLuxe Products  
Dictogrand Speakers  
Dongan Products

Dubiller Condenser Corp.  
Dundo Mfg. Co. Wire  
Dunham Loops  
Eby Binding Posts  
Eight-In-Line Super Unit  
Ekko Ground Clamps  
Electrad Products  
Electrohot Soldering Irons  
Elkon Chargers  
Formien Insulation Co.  
Franco B. Batteries  
Frost Products  
General Radio Parts  
Goodrich Rubber Panels  
Hammerlund Products  
Harkness Kits  
Hedgehog Transformers  
H-K Solderdip Lugs  
Hoosiek Parts  
Jefferson Products  
Karas Products  
Kelbrackets  
Kellogg Parts  
Kodel Products  
Kurz-Kasch Dials and Knobs  
Leaf-Burkhard Cone Speakers  
Lemco Transformers  
Madison Moore Units  
Marco Products  
Mignon S. L. F. Condensers  
Mueller Universal Clips  
Muter Lightning Arrestors

Naald Truphone Units, Etc.  
National Co. Parts  
Pacnet Products  
Penetrol Kits  
Polymet Mfg. Co. Condensers  
Premier Parts  
Raco Aerial Wire  
Radnall Co. Amperites  
Rauland Lyric Transformers  
Raytheon Tubes  
Remler Products  
Samson Transformers  
Sangamo Condensers  
Sensory Insulators  
Silite Trickle Chargers  
Silver Marshall Products  
Spaulding Bakelite  
Steinle Eliminators  
Sterling Meters and Testers  
Stevens Tools  
Testrite Hydrometers  
Thordarson Transformers  
Thorola Coils  
Tobe Condensers  
Tom Mack Products  
Tower Speakers  
Trimn Cone Speakers  
Universal Battery Clips  
Vesta Power Units  
Vetoreen Parts  
Weston Products  
Willard Batteries  
X. L. Variocndensers  
Yaxley Products

**THORDARSON, ALL-AMERICAN AND MAGNAVOX  
REPLACEMENT TRANSFORMERS IN STOCK**

**VESTA 35 and 50 Amp. and HOBCO A Power Units**

**ACME, GENERAL RADIO, ALL-AMERICAN, KODEL,  
BALKITE, SILVER MARSHALL, STERLING and  
WEBSTER ELMINATORS**

**ACME, STERLING, VESTA, BALKITE, TUNGAR and  
SILITE TRICKLE CHARGERS**

DEALERS: Park Next Door at Our Expense

## RADIO SUPPLY CO.

WHOLESALE

920 S. Broadway

VA. 6063

Los Angeles

New 1927 Catalogue Now Ready—Send For It

The New

# Hexadyne 6-Tube

PORTABLE **er**



**NEW IMPROVEMENTS WITH BEAUTY AND  
SIMPLICITY**

**SINGLE DIAL CONTROL  
OPERATES WITH A LOOP  
EXCEPTIONAL DISTANCE**

The Hexadyne stands today not only as the leader in the portable field but the recognized standard of advanced radio engineering. No other portable radio on the market compares with the Hexadyne for beauty of tone and simplicity of operation.

**List Price \$125.00 Complete with All Accessories**  
Including the New Power Tube

Dealers Write at Once for Attractive Proposition

Manufactured by W. D. Hunt Co., Inc., 4961 Sunset Blvd., Los Angeles  
Telephone OL. 3104

WHOLESALE DISTRIBUTORS

**C. W. Smith Co.**  
1125 Wall St., Los Angeles

**Pacific Wholesale Radio, Inc.**  
1320 S. San Pedro, Los Angeles

# Radiograms

From  
CLOYD MARSHALL, JR.

## SEX ANTAGONISM

An article by Rebecca West appeared in one of our most popular weekly magazines. The title of this article was: "Are there too many attractive men"? The title was merely to attract attention for the writer's purpose in this article was to show how unattractive, undiplomatic and boresome are the male of the species.

Down through the ages men and women have been saying disparaging things about each other so, consequently, they have always been in discord. This is all quite foolish, for men cannot do without the women and the women cannot do without the men. Even in inanimate things it takes the male and the female parts to make them complete. This is true of all life.

The sooner we stop talking and writing this trash about "Sex Antagonism" and finding fault with the opposite sex, the sooner we will be able to live in harmony and find real happiness.

## THE LURE OF CALIFORNIA

*More tourists have come to Southern California this year than ever before. Most of these visitors come to spend a few weeks or a month to get away from the rigorous climate of the North and Northwest. They bask in the warm sunshine, enjoy beautiful automobile rides over smooth highways, are enchanted by the magnificence of our snow-capped mountains and are astonished to see orange groves in full bloom at their base. They fall in love with the warm hospitality of the people of Southern California and want to stay here. The business man of the family investigates the business possibilities, he notices the large bank clearings, the enormous business going through the harbor, the stability of manufacturing and mercantile concerns and then decides to stay. A good percentage of the families who come to California for a short visit remain here.*

*California is destined to become one of the richest and most thickly populated states in the Union.*

## The Sensation of the Season

### McKinley Junior "B" Eliminator



**\$9.75**  
Complete

*Absolutely No Hum  
No Tubes to Blow Out  
No Acid*

**GUARANTEED FOR ONE  
YEAR**

Other McKinley "B" Power Units,  
\$20 to \$35

**GIVE YOUR SET A TREAT**  
*A Constant, Steady 'B' Supply*

Send Check or Money Order for  
\$1.00 and We Will Ship C. O. D.

Phone for Demonstration  
**YOrk 1828**

Or Call

**McKinley Radio Mfg. Co.**  
10905 S. Main St. Los Angeles

# Prize Letter

## Radio Development

The consensus of opinion seems to be that broadcasting is the development that has brought about the greatest happiness and benefit to people.

An almost endless list could be made of its benefits. It brings news items, stock reports, the athletic events, speeches by prominent men, the opera, songs and all types of music. It has developed greater understanding which is visibly augmenting our greater common purpose of good. It is developing a love of art, music and education, which is surely elevating the people of our country. It is giving to those millions who inhabit our rural and remote sections that highest expressions of civilization. It is making the lives of our invalids and sick happier and more pleasant.

The automobile was a wonderful development as it helped to bring the people in the isolated parts of the country into closer contact with those of the city but it took people away from home. Radio has been a greater annihilator of space than anything yet conceived, but instead of taking people away from home it brought them back and helped to rebuild the family circle, which is the real cornerstone of a Nation.

**VERNER C. BECK**  
307 East G St.,  
Ontario, California

February 15, 1927.

Editor, Radio Doing:

*I believe that the greatest development of Radio has been the broadcasting for it has made all the world a neighborhood.*

*With the radio set you can lean over the backyard fence and hear your foreign brother sing, talk and play. The ocean is a brook, the mountain range a mound.*

*To radio goes the credit for eliminating space. Ships at sea are never from the voice of friends and help ashore. Planes in the air can talk from the mysterious realm of cloudland to those below.*

*The heavens are more than mere settings for the sun, the moon, the stars and the clouds. Radio has made the vast canopy of heaven your music room. Turn the dial of your radio a mere fraction of an inch, then reach into the heavens for the kind of music your soul would like—and it's there. In that vast expanse of unseen nothing, is music, the simple strumming ukulele, the band, the symphony, the masters of the world in grand opera; football, baseball, contests, statesmen, poets—all—everything. Radio has made them your servants. Turn your dial—sit back, and the world passes in wonderful review.*

*We used to read of Alladin's lamp; how the world opened up its treasure stores simply at request. Gone are the fairy tales—enter the radio. One short turn and the world troops into your home.*

*All this brings smiles—smiles bring happiness, and a happy life is God's greatest gift. And radio did it.*

*In somber hospital, pain is soothed at the music from the air. The unfortunate, doomed to stay indoors, finds happiness with his friends in radioland; loneliness vanishes, the heart is glad.*

*What greater gift could man conceive than radio broadcasting?*

(Signed) **VERNER C. BECK.**

We have been most fortunate in having three such able men, and ones who are so conversant with all the different phases of the radio and broadcasting industry to act as judges of the contest. Messrs. G. Allison Phelps, A. G. Farquharson and N. E. Brown have all been actively interested in radio for many years. They needed their wide experience and knowledge in order to select the best letter out of the many remarkably well written ones submitted for these contests. It was most gratifying for us to receive such a hearty response from our readers, for it made us realize that our readers are also our friends.

## Introducing Our Commissioner

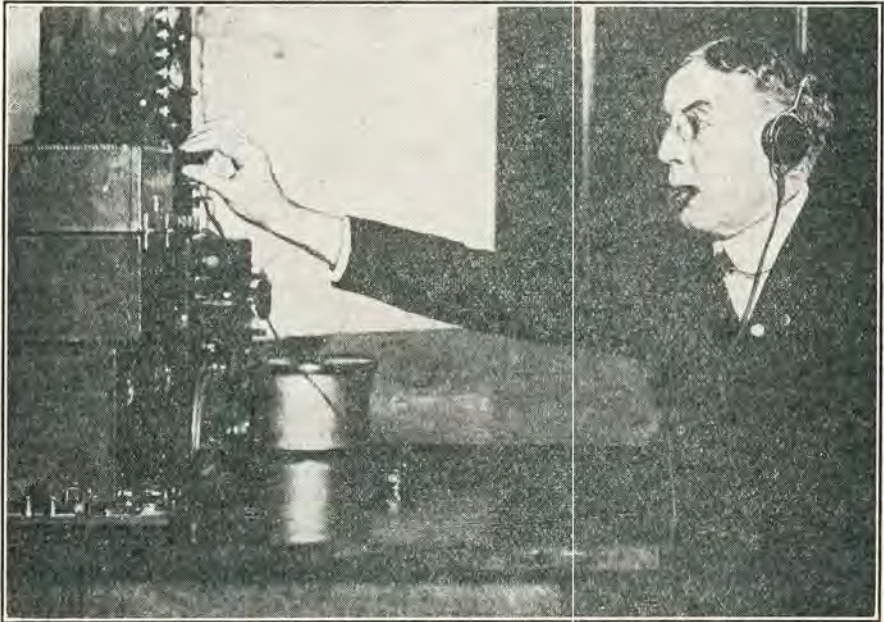
Radio users west of the Rocky Mountains are to be congratulated on the appointment of Colonel John F. Dillon as commissioner for this district. None in this territory is better qualified to fill this important position and all can be assured of a square deal, both broadcaster and listener-in.

We give below a short history of the Colonel's experiences in radio and

operator on the cable ship *Cyrus W. Field*.

In 1908 he was in charge of the U. S. radio laboratories for the Signal Corps in Washington, where he served for four years.

In 1912, after the passage of the Radio Law he was the first supervisor of radio for the eighth district, with headquarters in Cleveland.



**COL. J. F. DILLON**

branch industries which have qualified him.

Dillon enlisted in the army at the age of 18 and entered the Signal Corps, accompanying Schafter's expedition to Cuba during the Spanish-American war. At the close of the war he was made chief telegraph operator for the military service in Porto Rico. He later went to the Philippines where, as a sergeant, he was district superintendent of Telegraphs for the provinces of Cavite and Rizal. Later he served as radio

When this country entered the World War in 1917 he received a commission as captain in the signal corps and was quartered in Washington and San Francisco. He served as chief signal officer to the First Army Artillery later at General Headquarters in Chaumont.

After the armistice he was appointed Supervisor of Radio for the Sixth district, with headquarters at San Francisco, and has remained in that position up till the time he received his nomina-

(Continued on Page 17)

## Second Nude Swimming Prize Letter

The prize in the Ladies' Division of Major Mott's KFWO contest for the best letter on the subject of "Bathing Suit Versus 'Au Naturel'" goes to Mrs. Connell of Santa Barbara. Her contribution follows:

Major Mott, Owner KFWO,  
Catalina Island, Calif.

Dear Sir:

*Figuratively speaking, my hat is off to Major Mott! From the tone of your voice over the microphone and your attitude in your prize contest—for and against a woman swimming "au naturel"—you surely are a real man.*

*It seems to me there is no argument. All true men and women know what the body is like that God gave them. In such an endurance test as this, need anyone, entering into the same with a clean spirit, hamper themselves with a bathing suit, even such a one as is used nowadays, to chafe their shoulders or draw upon them, thus hindering free movement while in the water?*

*If any man or woman—and the term is used in the broadest sense—cannot look upon God's handiwork in a true, clean spirit, I'd say let each entrant do as he or she is in the habit of doing, whether "au naturel" or with a postage stamp stretched across their bodies, and let those narrow-minded ones turn their heads aside as the swimmers enter and come up out of the water.*

*I am a mother. Most folks consider me a crank. I have two girls, one fifteen and the other eight years old. We do not believe in wearing too many clothes. They are not conducive to comfort or good health. I have never acquired anything in my life for nothing, but I do know the difference between sense and nonsense, comfort and discomfort, where strength and endurance are considered.*

*Here's to the winner, be she in swaddling clothes or "au naturel."*

Very sincerely yours,  
(Mrs.) ROSINE CONNELL.

1305 Gutierrez Street,  
Santa Barbara, Calif.

## Mott Replies to Blease

Senator Blease of South Carolina, in the discussion of the Dill-White radio control bill, misinterpreted an article by Major Mott recently published in Radio Doings, and used it as the basis of an argument against the bill. Major Mott's reply to the Senator follows:

March the 4th 1927.

To the Hon. Senator Blease,  
U. S. Senate, Washington, D. C.  
My dear Senator:

*A friend in the Senate sent to me the Record containing some MOST . . . . amusing remarks by you—with regard to a certain article of mine, that appeared in the publication of which I am Associate Editor—"Radio Doings"—and that you did me the honor to quote on the floor of the Senate!*

*So far . . . . the Record was—as usual—rather dry reading, but . . . . forgive me . . . . I DID get a HUGE kick from YOUR OWN REMARKS—manufactured either out of a willfully stupid viewpoint of the article—and that which was PLAINLY intended—or from crass ignorance of the subject that you were speaking on!*

*It has always seemed a very strange thing that many of the Fathers of this country of ours, arise on their two pins and ejaculate loudly—with much forensication—good AND the reverse—on matters which they know slightly LESS than nil!*

*Had you known ANYTHING about radio you would have REALIZED that it was my earnest desire to make it possible for the POOR MAN, with the little set (receiver) to HEAR clearly—by CLEANING OUT a mess of "fly-by-night" stations that INFEST the airs, causing such interference, one with the other, that only the MOST EXPENSIVE RECEIVERS can get any satisfactory reception of programs, and so forth!*

*But no . . . ! You JUMP wildly at conclusions . . . breathing loudly (probably) fire and vengeance on this "Big Ike"—meaning your very HUMBLE Servant—sic!—who wants to take away the poor man's pleasure—etc.—AD NAUSEAM—(you do read Latin, do you not?) whereas the FACTS are that I was madly working to ENSURE the POOR MAN HAVING PLEASURE!*

*If the citizens—and very SPLENDID they are, too—South of the Mason and*

### Mott Answers Blease

Dixon Line would exercise a bit more CARE in the selection of their candidates for Congressional Offices—perhaps the unfortunate South would not have the reputation of being largely "poor white trash"!

Sincerely yours,  
LAWRENCE MOTT.

### Radio Commissioner

(Continued from Page 15)

tion as one of the commissioners provided for in the Radio Bill passed by the late lamented Congress.

Colonel Dillon knows radio in all its branches, and is thoroughly familiar with the broadcast situation on the Pacific coast. We can all rest our case with him representing us with the assurance that if anyone can handle the present chaotic conditions, he is the man.

Commissioner Dillon has left for Washington to take up his new and arduous duties. Good luck to him!

*Do you want better reception?*

PERHAPS this GILCREST-CROSS Non-directional Aerial that gets signals perpendicularly will get it for you. It has for thousands of others. Eliminates most of the interference caused by electric wires running parallel with horizontal aerial. Rises 18 feet above roof. Easy to install.



24 inch - \$ 9.00

30 inch - 10.00

Prepaid anywhere  
in U.S.A.

**GILCREST & QUINN**

2052 MARKET ST., SAN FRANCISCO

Los Angeles Distributors:

W. B. HARRINS, 4115 W. Washington Blvd.



Continuous, Dependable, Trouble Free, A and B Power for Your Radio from Your Electric Light Current

\$5



DOWN

Puts One In Your Home

Liberal Allowance Made on Old "A" Storage Battery

**PHILCO SALES & SERVICE Co.**

1514 South Hope St.

Phone WESTmore 9065

Phone or Mail Coupon for Free Demonstration in Your Home

-----  
 Name.....  
 Address.....  
 Phone.....  
 Radio.....



By CAREY PRESTON RITTMEISTER



"C. P. R."

You have read, at some time, or heard some old plainsman tell of the mother instinct which leads a fox or coyote to take her pups out on the plain, she leading while they follow her through draws over rough going, teaching them to hunt.

The other day I had to drive to one of the beach cities, passing through some rough, hilly country, and my eye was caught by four reddish-brown figures following the basin of a small arroya. I soon saw that they were bloodhounds, a mother and her three puppies—beautiful dogs, their ears almost touching the ground as they went, the mother going very slowly ahead, looking back from time to time to see that the babies were all right. She chose the roughest places, leading them over rocks, through thick brush, into deep holes and out again; it was quite evident that she was giving them a lesson—maybe their first—in hunting. One little fellow seemed brighter than the others, at least he displayed more initiative, for he was running here and there, sniffing, evidently finding tracks which must be investigated. The patient mother would stop then and wait until the one of inquiring mind had satisfied his curiosity, then on they went, until a knoll took them out of my sight. It was a pretty thing to see, and might well carry a lesson to the modern mother who, more like the bird, allows the youngster to wriggle out of the nest and meet the world without guidance or protection.

I have in my memory a little story which I have been intending for some time to tell you. It's a radio story in three installments, a true one, and next week I shall tell you the first part.

I can hardly remember when eggs have been as cheap as they are now, and if you are inclined to practice economy, you should serve eggs in as many ways as you can without tiring your family. The recipes on today's page are tried and not found wanting, good for luncheon or breakfast.

#### Eggs Spanish

Boil three eggs 20 minutes; cool in cold water; shell and chop not too fine. Prepare a rich cream sauce by melting in a saucepan two tablespoons of flour, and very gradually add  $1\frac{1}{2}$  cups of milk. Stir constantly until the sauce thickens and boils; add  $\frac{1}{2}$  teaspoon of salt, 1 tablespoon finely minced pimentos, 1 large cup of grated cheese, and the eggs. Cook until the cheese is melted, and serve on rounds of hot, crisp toast. If you have a little cold chicken or veal left from the day before, it can be chopped and added to this dish, for variety.

You all have your favorite recipe for stuffed eggs; here is my favorite, and for Sunday night supper they can be prepared in the morning and set in the refrigerator. They are delicious for a picnic luncheon, and if wrapped in dainty paper to keep them fresh, will be enjoyed. Cut desired amount of hard boiled eggs in halves cross-wise; remove yolks and add an equal amount of cooked lean ham, pounded to a paste.

(Continued on Page 24)



# Koo-KoO KolyuM

By HAL DAVIS

*On the understanding that we assume all risk of bodily injury, the Chief has allowed us to start a strictly foolish department. To lend off, we are glad to give refuge to a contribution which was refused space by the darned high-hatters running our "DX Club":*

Piute Oasis, Cal.,

Feb. 31, 1927.

Radio Doings,

Lost Angels (near Hollywood), Cal.

Dear Sirs:

I red in yure valable paper all about this heer now Mister Preston down Chatsworth way gittin JOKE, Japann. But he ain't got a thing on us boys up heer on the Higgins Ranch. We all built a 7½ Toobe "Supper—Come in fr a dime," usin' the old reliable Vodeville Circuit, and we pulls in JOKE any an' all nites between 11 o'clock, without sittin' up so late we're too cock-eyed to tell what we git,—like some fellers we mite menshun but won't.

And as fer PROOF, we got 'em all skinned on that, cause we got a Jap cook, named Hashandeggo, up heer in the Bunkhouse what listens in with us boys, and the first time he gets a ceerful of the progrim he says all exsited like:

“**オは實に世界的發明に**”

This meens, he says, that Madame Yushudlerntocooko, the Misses Rittmyster of Japann, was givin a recipiee how to make Hasenpfeffer, Japaneese stile. However, us boys bein skeptickle, we all makes Hashandeggo rite a letter to the Jap stashun, and heers what they says in their reply:

“**して今全世界に普及せ**”

So I gess we don't need no better proof than that, do we? You city slickers down there 'round Lost Angels may know yure Radio, but eny time you're packin up throo the Valley heer, jist drop in at the Rancho Higgins and we'll show you a thing er two!

Yures till Niagra Falls,

JAS. P. ("SLIM JIM") BLUDGETT.

# DAILY

(Except Sunday)

**12:30 to 1:30**  
Community Program



**KMTR**

MONDAY  
**POMONA**

TUESDAY  
**WHITTIER**

WEDNESDAY  
**ANAHEIM**

THURSDAY  
**GLENDALE**

FRIDAY  
**SANTA ANA**

SATURDAY  
**WALTERIA**

Direction of

**WALTER BIDDICK**

487 Chamber of Commerce Bldg.  
WEstmore 9137 LOS ANGELES

# Radio Topics of the Day

*A Weekly Review of Radio News, Thought and Opinion*

## WHAT THE COMMISSIONERS MAY DO

What will the new Federal Radio Commission do, seems to be a new riddle, if the number of queries on this question is any index to what the fans and broadcasters want to know. It is a difficult one to answer, even when the names of five good men and true, but untried as yet, are known. It is assumed by most commentators that among the first moves will include the following in the broadcast problem:

Order all United States broadcasters now operating on the six so-called Canadian wave-lengths to shift back to their old channels or stay off the air.

Require "wave-jumpers" estimated at about 125, to return to their originally assigned standard wave lengths or cease broadcasting; and

Direct nearly 200 stations, which have increased their power from that allotted them, to reduce power to their last rating.

These few steps would tend to reduce interference considerably, and the first one might save possible international altercation with the Canadian radio authorities, who have tolerated considerable imposition from our unrestricted stations since July 1, 1926.

These orders would by no means solve the complicated task of unscrambling the frequencies of 733 active stations, however. There remains many things to be done, among them the reallocation of the 89 radio broadcast channels equitably among the 510 older stations on the air and the 233 newcomers, licensed since Just 1st and now transmitting on any channel they choose.

## COMMERCE DEPARTMENT TO REORGANIZE RADIO SECTION

Secretary of Commerce Hoover is making every effort to facilitate the administration of radio and coordinate its operation with the plans of the new Federal Radio Commission, as prescribed in the law just enacted. To this end, he will probably offer a suite of offices in the Commerce Department building to the five commissioners, so that they can be in close contact with the technical and clerical staff of the department which has been handling radio since 1912.

In order to simplify the operation of his radio staff and insure a minimum of delay in carrying out the policies and regulations of the commission, Mr. Hoover plans to consolidate all radio activities of the department, except those of purely scientific nature handled by the Bureau of Standards, under one head.

The old radio section will soon be divorced from the Bureau of Navigation, of which it has been a part since radio first was required on vessels, fifteen years ago. The reorganized radio section, to be known as the Radio Division of the Department, will no doubt be headed by W. D. Terrell, Chief Supervisor of Radio, a veteran radio official. The new division will probably comprise three main sections, for example: one for licensing and inspection; another handling finance and accounting, including the present International Accounting Office; and a technical section which will work out wave-length and power assignments, under the policies laid down by the commissioners.

## Picked Out of the Air

By HEARL LAVERN CROWTHERS

Poison ivy is a clinging vine.

*Many a pippin has turned out to be a crab apple.*

Many a good home has been broken up by an idle "roomer."

*The highest spite fence ever built had a crack in it some place.*

Many a baby has been a man's inspiration, but not the grown-up variety.

*The only real benefit performance is in giving a man the benefit of a doubt.*

The fellow who stated the reason advice is so cheap is because there is such a small demand for it was about as wise as the one who invented interest.

*A parrot may be taught to speak a few sentences in any language, but at no time does it know about what it is talking. If it had understanding it would not be a parrot.*

"Babe" Ruth knocks more home runs than any other ball player, consequently receives a greater salary.

A few more "home runs" and less hitting of "fowls" might help many salaries.

## Patience, Listeners!

"The completion of the radio legislation makes it possible to eventually clear up the chaos of interference and howls in radio reception. The new Commission, which is to determine who shall have licenses to broadcast, at what times and with what power, will no doubt require some months to make rearrangements of broadcasting stations which will be necessary. It will require some patience on the part of listeners while the Commission works out the problem."—Herbert Hoover, Secretary of Commerce.

## New Local Station

KPLA are the call letters that the new station located on the Commercial Exchange Bldg., Los Angeles, expect to be assigned; however, for the time being they may use the call KFXB, the old call of the Big Bear station, whose equipment they have acquired.

We can expect to hear this station almost any day as the work on their elaborate studio and transmitting equipment is about completed.

This station will broadcast on 353.7 meters, which will bring them in between KNX and KMTR, and their power is 1000 watts. They will be on the air daily from 2 p. m. to 2 a. m.

The schedule of programs will include:

Palais De Dance, 2 to 4 p. m., and 10 to 11 p. m., daily, except Sunday.

Albert Hay Malotte Studio, 6 to 7 p. m., daily except Sunday.

Lyman's Cafe Alabam, 11 to 12 p. m., daily except Sunday.

Sebastian's Cotton Club Cafe, 12 midnight to 2 a. m., daily, including Sunday.

Roosevelt Memorial Park, 2 to 4 every Sunday afternoon, broadcasting the famous organ.

Never less than two microphones will be used, and as high as six for large orchestras.

The personnel of KPLA is as follows:

Harold B. Link (formerly of KMTR), program manager; B. O. Heller, technical director; "Little Eddie" Barnes, announcer; Charlie Hamp, guest announcer.

Station KFWI, the Radio Entertainments, Inc., at San Francisco, have taken advantage of two big mountain peaks that are planted squarely in the middle of the city of San Francisco and are known to the natives as Twin Peaks, to erect their broadcasting towers on them with the power house and transmitting equipment directly underneath.

# THE TROUBLE SHOOTER



ASK K.G.O.  
The Answer Man

KENNETH G. ORMISTON  
Technical Editor



*Users of dry B batteries have found that the portion of the battery which is tapped off to supply plate current to the detector tube, and the portions tapped off to supply other intermediate voltages, run down faster than the balance of the battery, thus rendering the battery as a whole defective and short-lived. They ask how this may be obviated.*

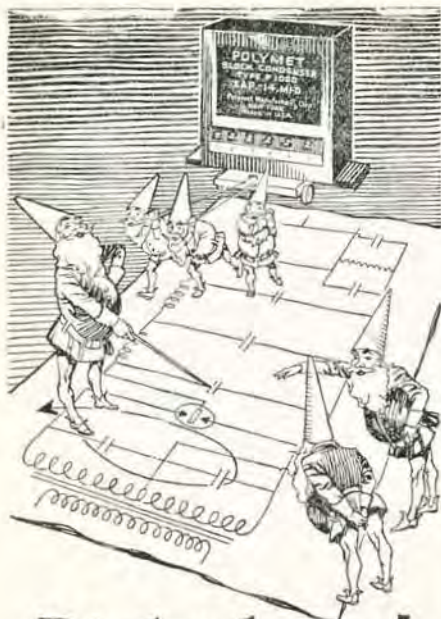
Naturally the drain upon that portion of the battery which supplies the detector plate circuit is greater than on the rest of the battery. This section therefore runs down faster, and when it has reached the useless point, the battery, as a whole, must be discarded in spite of the fact that the balance still has some useful life. The most economical method of overcoming this disadvantage is to connect the detector plate lead to the full voltage of the B battery through a variable, noiseless resistance unit. Then by means of the adjustable resistance any desired voltage may be had for the detector. Where RF amplifier tubes also use an intermediate voltage, they may also be operated through a variable resistance unit connected to the full voltage of the whole B battery.

In this manner the entire load is on the B battery, as a whole, the intermediate voltages are finely adjustable to any desired point, and the life of the battery is materially lengthened. The Clarostat is a suitable unit to use for the purpose.

*With many types of socket-power units, there is but one voltage adjustment on the output. Since the load or number of milliamperes required from each tap varies with different sets, the voltage supplied must vary also. Often it is found that with the desired power and amplifier tube voltages, the voltage of the detector terminal is considerably less than the desired 45 volts. There is no means of independently adjusting the voltage of each tap to maintain the required milliamperage load of each tap. Fans have requested information as to whether there is anything that can be done to help this condition.*

It is true that for every set there is a condition to be met by the eliminator or power-unit which is different from the conditions found with another type of set. Each voltage tap requires a definite number of milliamperes at a definite voltage. And since the voltage supplied by the eliminator varies with the load, and no means are provided for readjustment of the voltage to compensate for load variation, the writer suggests a method of building up the detector tap voltage, which is usually the low one.

A variable resistance unit with range from 5,000 to 50,000 ohms may be connected from the high voltage tap (power tube terminal, 135 volts) to the detector tap (45 volts) and by adjusting this resistance unit the voltage supplied the detector may be built up to the desired amount.



**Right here!**

You can't go wrong when you use Polymet High Voltage Condensers in sets or power units. Built to withstand 1,000 volts permanently, and individually tested for this rating. Incorporate finest impregnating compounds. Individual units or in blocks; cans or unmounted; fixed or flexible leads.



Capacities .1 to 5. Mfd. . . . . 60c to \$4.50  
**RAYTHEON CIRCUIT BLOCKS**

Tested by the Raytheon Laboratories, they have passed with highest honors and been given an enviable rating.

F1001—1-C-1 Mfd. . . . . \$2.00  
 F1000—14 Mfd. . . . . 9.50

At all good dealers everywhere.

Illustrated descriptions sent **FREE** on request  
**Polymer Manufacturing Corporation**  
 599F Broadway New York City

Pacific Coast Representatives  
**THE SPECTOR COMPANY**  
 Rialto Building, San Francisco, Cal.  
 "World's Largest Manufacturers of Radio Essentials"

**POLYMET**

**STROMBERG-CARLSON**



at  
**The Radio Art Studio**

*"A Perfect Setting for  
 A Perfect Set"*



Authorized Dealer

**Stromberg-Carlson**

3831 Wilshire Blvd.

Between Western and Manhattan

Phone WASHINGTON 4095

Open Evenings Until Nine

**More Expert  
Testimony  
of  
CeCo  
Tube  
Superiority**

FEDERAL TELEPHONE MFG. CORP. made a 1000-hour life test of 27 different makes of tubes. At the expiration of these tests their expert states "CeCo Tubes had an emission of 283% of the average." They remark that "these tubes have remarkable characteristics."

WALBERT MANUFACTURING CO., manufacturers of the well known Isofarad and Penotrola, say:

*"We have been using your tubes along with other makes in our inspection department and found them to be very superior. The type H Detector pleases us particularly."*

The VICTOREEN RADIO CO., manufacturers of the Victoreen Super-heterodyne, say:

*"These tubes are the best we have tested, and feel that your sales returns should be in proportion."*

KENNETH HARKNESS now specifies CeCo Tubes for his new KH-27 receiver.

**These People Don't Guess—  
They Know**

**C. E. Manufacturing Co.**  
Providence, R. I.

Pacific Coast Representatives

**B. KRUGER & CO.**  
500 North Huntley Drive  
West Hollywood, Calif.

Sherman P. O. Tel. OX. 3897

## The Woman's Page

(Continued from Page 18)

Mix yolks and ham, and season with salt, pepper, onion juice, French mustard, lemon juice and add olive oil sufficient to make a smooth paste. Fill the eggs with this mixture and press the corresponding half closely upon it. Wrap in waxed paper, and if you like roll each egg in green or yellow fringed tissue paper squares. This is a nice way to carry them to a picnic, and if you are clever, add a slip of paper containing a fortune-telling rhyme.

## R. M. A. A. Meets

There will be a meeting of the Radio Manufacturers' Agents Association on Friday, March 11th, at 11:45 a. m., on the mezzanine floor of the Hotel Alexandria, Los Angeles. President Scott reports that the food is excellent and the service so prompt that the meeting can and will be closed at 1:30.

Mr. Floyd C. Best, president of the Herbert H. Frost, Inc., of Chicago, is visiting the coast for the first time. He will give a five-minute talk on the radio situation in the East and the prospects for 1927-8.

There will be many well known manufacturers, jobbers and dealers at this meeting, and all members of the Radio Trades Association are cordially invited to attend what looks like a most interesting meeting.

All local manufacturers are eligible for membership in the Manufacturers' Agents Association, and are especially requested to be present.

Burgess Batteries      Cunningham Tubes

**FIGUEROA RADIO SHOP**  
RADIOTRICIANS  
KOLSTER

Crosley Sets and Speakers  
Expert Service on All Makes of Sets  
Tucker 6763      747 S. Figueroa St.

## KFI Broadcasts Philharmonic

Southern Californians have long wanted to hear the concerts of the Los Angeles Philharmonic Orchestra broadcast. Through the courtesy of the Standard Oil Company of California,

liant conductorship of Walter Henry Rothwell, the Philharmonic has established itself as one of the foremost American orchestras.

The soloists in these concerts are

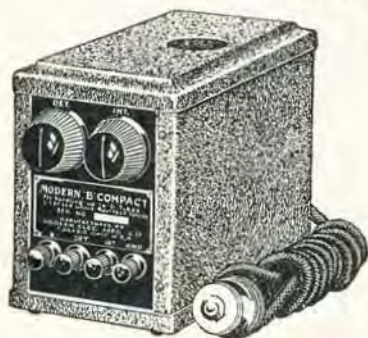


this desire is now realized, and the first of a series of five programs was broadcast by KFI and KPO on March 2nd, and the second of the series is to be March 16. Under the sponsorship of W. A. Clark, Jr., the able guidance of Caroline E. Smith, and the bril-

noteworthy; Rudolph Reuter, eminent German pianist in the first and Erwin Nyiregyhazi, Roumanian pianist, in the second. Of special interest to the radio audience is the fact that Virginia Flohri, soprano, will be the soloist in the third of the series, March 26.

## MODERN "B" COMPACT

The "B" Eliminator Without a Fault, Using the Famous Ratheon Tube



Condenser troubles, the bane of most eliminators, are not known in the

### MODERN ELIMINATORS

Use special type heavy duty condensers used throughout.

**Price \$35**  
Complete with Tube

Operates any set from one to seven tubes

Exclusive Wholesale Distributors

**YALE RADIO ELECTRIC CO.**

1111 Wall St.

LOS ANGELES

WEStmore 3351

A  
N  
N  
O  
U  
N  
C  
I  
N  
G

IN WEST  
HOLLYWOOD

**RALPH E. HETZEL**

Opens New Exclusive

**RADIOLA**

Headquarters

Our  
**NEW**  
ADDRESS

7915 SANTA MONICA  
BLVD. (at Fairfax)

**Hetzel Company**  
Phone GRanite 5874

**IF**

you own a radio receiving set or intend building your own set, we can be of material assistance to you.

**IF** you intend building a set or some special circuit, let us select and match your parts. We will obtain any parts you need and carefully inspect and match them for your particular requirements, without any additional cost to you, thereby assuring you of the maximum results for the money invested.

**IF** you already own a receiving set we can make any alterations or repairs that you may desire. This includes matching transformers, increasing selectivity and other ways of bringing your receiver up to present day refinement.

All our work is done by competent radio technicians in the most modern laboratory on the Pacific Coast, where we can also render complete service in calibrating, matching, testing, and advising on technical matters.

**IF** you want anything done in the Radio Line, call on us. Or a phone call will bring a competent radio man to you.

**Radio Receiver Service**

402 Allied Crafts Bldg. Los Angeles  
WEstmore 1402





## MR. TWENTY FROM GLENDALE

DX Club:

Have had my Radiola "20" a year now, and was absolutely satisfied with it until a friend lent me an oscillator, and I carefully adjusted the two screws of the neutralizing condensers.

What a change! In came WEO, Columbus, Ohio, for my first time, and not only DX, but improved tone quality, selectivity and ease of tuning. My location is bad, 20 feet from a big hotel and 100 feet from S. P. car line, and in South Glendale. Here are my best: KYW, WOAW, WHO, WCX, WOC, KFOA, CFCN, KEX, KFXX, WLW, WOAI, KJR, KOA, KOIN, AMB, WLIB, KSL, CNRV, KFXX, KOWW, WORD, WWS, KFAD, KLZ, KOMO, KFCB, WBBM, KFAU, many Oakland and Frisco stations and others, all on RCA, 100 speaker. Shall be pleased to help those who write me, and here is one test that shows your set is very bad, set amplification at O, volume full on, fil. of tubes turned up to the correct 3 volts, tune dead on to all stations using verniers especially on the low meters, and if set squeals, it is badly out of neutralization.

Let us have some more DX reports from those who live in Glendale or close in to Los Angeles, who have to fight through locals, not from outside places like Chatsworth, Pico, Paso Robles, Alturas, etc., where any old three lung-er can do fair DX. My congratulations to C. C. Curry of Pasadena.

T. T. REEVES,  
Glendale, Calif.

An interesting letter from Glenn E. Deamer, 6507 Kansas Ave., Los Angeles, gives a long list of DX which he has snared on his home-made 6-tuber. He gets 'em from Pittsboig to Honolulu, and now is going to call in a Jap nurseryman to ungarble some mysterious stuff that he thinks might be JOAK. He extends an invitation to anybody that wants to go game hunting with him, or sit up with a sick friend, to give him a ring and "have a listen."

## PASADENA DX

DX Club:

Being one of the DX hounds of Pasadena, I will have to hand it to Charles C. Curry on his DX reception, as it is no joke getting through KPSN. I also have a Radiola 20, but my list isn't much as yet. I have about 45-ft. aerial and copper plate ground.

Well, here goes: KYW, WHO, WOAW, WCX, WJR, KLX, KFQB, KGW, WQJ, KFXX, KPO, WLW, WCCO, KHQ, WOAI, KJR, KFBC, KGO, KOB, KQW, WJAZ, KOA, KOIN, WSMB, KOMO, KTAB, KSL, KFXX, KOWW, KSMR, KNOX, KFAD, KFRC, KWTG, KFWL, KMO, KFSD, KFQW, AMB, KYA, CNRV, CYJ, CYL, and all locals.

H. C. NEUKAEMPER,  
1485 Oxford Ave.,  
Pasadena, Cal.

## GOOD DAYLIGHT WORK

DX Club:

Guess it's nearly a year since I wrote the DX Club, and not being able to show greater distance than the consistent Chicago barrage, I wish to report my daylight reception. Very consistently and on speaker between 12 noon and 1 p. m. I receive KGO, KPO, KFI, KNX and KYA. On occasions I have done better at 1:30 p. m. Feb. 6th I had KGW. One day last December I had KSL and KOA before 2 p. m. I am 180 miles inland in the Sierras at an elevation of 3926 feet. At night I have had PWX, CYA, CZE and WJZ, but unless I can get them seven nights a month they are not worth mentioning as night reception. My log consists of 80 stations on speaker, picked up in 35 days starting from Jan. 4th. My outfit is a nine-tube super-het, using Silver-Marshall coils with the antenna rotor stripped to six turns, and a 160-foot antenna.

MERLE L. SMITH,  
Independence, Calif.

# Broadcast Changes

Six more broadcast stations were licensed just prior to the signing of the new radio law by the President, and these will be the last for two months at least. The total on the air is now 733.

Future licensing is up to the Federal Radio Commission, which will probably not be able to untangle the ether jam or issue any regular licenses before the end of April. The Commission may be disposed, however, to extend the time limitations or issue a blanket renewal to active stations, temporarily, until its studies and surveys are completed.

The six late comers are all small stations, located in Rochester, N. Y.; Los Angeles, Calif.; Anota, N. D.; Mitchell, S. D.; Memphis, Tenn., and Washington, Pa.

Their calls, owners and channels follow:

Call	Owner	Wave Length Meters	Frequency Kcys.	Power Watts
WNBQ	Gordon P. Brown, Rochester, N. Y.	407.6	735.6	15
KRLO	Freeman Lang and A. B. Scott, Los Angeles, Calif.	440	681.4	250
KGFN	Haraldson & Thingstad, Aneta, North Dakota	221.1	1350	15
KGFP	Mitchell Broadcast Company, Mitchell, South Dakota	263	1140	25
WNBR	Popular Radio Shop, Memphis, Tenn.	316	948.8	25
WNBO	John Brownlee Spriggs, Washington, Pa.	215	1395	15

## CHANGES REPORTED

KTCL, American Radio Telephone Company, Seattle, Wash., formerly Birt F. Fisher; call letters changed from KGFA.

WCWS, The Bridgeport Broadcasting Station (Bridgeport, Conn., Portable, formerly Charles Wm. Solen.

WHBQ, Broadcasting Station WHBQ, Inc., Memphis, Tenn., name changed from Men's Fellowship Class, St. John's M. E. Church South; power changed from 50 to 100 watts.

KPNP, Central Radio Company, Muscatine, Iowa; call letters changed from KGEX.

WJBY, Electric Construction Company, Gadsden, Ala., wave-length changed from 260 meters, 1153 kilocycles, to 270.1 meters, 1110 kilocycles; power changed from 15 to 100 watts.

KFXB, Bortram O. Heller, Los Angeles, Calif.; location changed from Big Bear Lake, Calif., power changed from 1000 to 4000 watts; wave-length changed from 202.6 meters, 1480 kilocycles, to 352.7 meters, 850 kilocycles.

Oklahoma College for Women, Chickasha, Okla., wave-length changed from 252.0 meters, 1190 kilocycles, to 270.1 meters, 1110 kilocycles.

WHT, Radiophone Broadcasting Corporation, Deerfield, Ill., wave-length changed from 238 meters, 1260 kilocycles, to 399.8 meters, 750 kilocycles.

WKBF, Noble B. Watson, Indianapolis, Ind., wave-length changed from 244 meters, 1229 kilocycles, to 243.8 meters, 1230 kilocycles; power changed from 100 to 500 watts.

KUT, University of Texas, Austin, Texas, wave-length changed from 230.6 meters, 1300 kilocycles, to 272.6 meters, 1100 kilocycles.

## RADIOLA 20 OWNERS, ATTENTION!

You can make a simple change in your receiver so that nearby local stations will not interfere. Double your volume on distance. Anyone can make this change in a few minutes. No soldering or rewiring. It is not an attachment.

Results Unconditionally Guaranteed  
Instruction and Material Sent Prepaid for \$1.50

G. HOFFMAN COMPANY, 306 East Fourth Street, Long Beach, California

# SUNDAY TIME TABLE

ALL TIME TABLES ADJUSTED TO PACIFIC TIME  
(X) Indicates Station Is On the Air

10-12 A.M.	12-2 P.M.	2-4 P.M.	4-6 P.M.	STATIONS			6-8 P.M.	8-10 P.M.	10-12 P.M.																						
10 00-10 30	10 30-11 00	11 00-11 30	11 30-12 00	12 00-12 30	1 00-1 30	1 30-2 00	2 00-2 30	2 30-3 00	3 00-3 30	3 30-4 00	4 00-4 30	4 30-5 00	5 00-5 30	5 30-6 00	CALL	Wave Length Meters	Power in Watts	STATION	6 00-6 30	6 30-7 00	7 00-7 30	7 30-8 00	8 00-8 30	8 30-9 00	9 00-9 30	9 30-10 00	10 00-10 30	10 30-11 00	11 00-11 30	11 30-12 00	
<b>SOUTHERN CALIFORNIA</b>																															
				X X X X					X	X	KELW	580	250	Burbank																	
	X X									X	X	KGEF	517	1000	Los Angeles				X	X	X	X	X	X	X	X	X	X	X	X	X
X X	X X						X X					KFI	467	4000	Los Angeles			X	X	X	X	X	X	X	X	X	X	X	X	X	X
		X X										KFCR	413	50	Santa Barbara						X	X									
X X	X X	X X										KHJ	405	500	Los Angeles				X	X	X	X	X	X	X	X	X	X	X	X	X
	X X											KMIC	387	500	Inglewood				X	X	X	X									
												KFBC	380	50	San Diego				X												
											X	KMTR	370	500	Hollywood			X	X	X	X	X	X	X	X	X	X	X	X	X	X
X X	X X				X X	X X	X X	X X				KNX	337	750	Los Angeles			X	X	X	X	X	X	X	X	X	X	X	X	X	X
X X	X											KPSN	316	1000	Pasadena			X	X												
X X	X X									X X		KFWC	295	200	San Bernardino										X X	X X	X X	X X	X X	X X	X X
X X	X X	X				X X						KTBI	294	750	Los Angeles			X	X	X	X	X	X	X	X	X	X	X	X	X	X
X X	X X	X				X X	X X	X X				KFSG	275	500	Los Angeles			X	X	X	X	X	X	X	X	X	X	X	X	X	X
												KWTC	263	250	Santa Ana			X	X												
								X X				KFWB	252	500	Hollywood								X X	X X	X X	X X	X X	X X	X X	X X	X X
X X	X X								X X	X X	X X	KNRC	238	1000	Santa Monica			X	X	X	X	X	X	X	X	X	X	X	X	X	X
X X	X X	X			X X	X X	X X	X X	X X	X X	X X	KFON	233	750	Long Beach			X	X	X	X	X	X	X	X	X	X	X	X	X	X
X X	X X	X X										KPFC	229	50	Pasadena			X	X	X	X										
												KFQZ	226	500	Hollywood					X	X	X	X	X	X	X	X	X	X	X	X
			X X							X X		KFWO	211	250	Catalina			X	X	X	X	X	X	X	X	X	X	X	X	X	X
												KFVD	205	500	Venice			X	X	X	X	X	X	X	X	X	X	X	X	X	X
<b>NORTHERN CALIFORNIA</b>																															
X X	X				X X	X X	X X					KPO	428	1000	San Francisco			X	X	X	X	X	X	X	X	X	X	X	X	X	
X X	X											KYA	400	1000	San Francisco					X	X										
X X	X X				X X	X	X					KGO	381	4000	Oakland			X	X	X	X	X	X	X	X	X	X	X	X	X	X
X X	X X	X X										KQW	323	500	San Jose					X	X	X	X								
X X	X X	X X									X X	KTAB	303	1000	Oakland					X	X	X									
	X X								X X			KFRC	288	500	San Francisco			X	X	X	X										
	X X											KFUS	256	50	Oakland					X	X	X									
X X												KRE	256	100	Berkeley																
			X X	X								KFWJ	250	500	San Francisco			X	X	X	X	X	X	X	X	X	X	X	X	X	X
<b>NORTHERN AND WESTERN STATES</b>																															
X X	X X	X X				X X	X X	X X	X X			KGW	491	1000	Portland					X	X	X	X	X	X	X	X	X	X	X	X
						X X	X X	X X	X X			KEX	447	5000	Portland			X	X	X	X	X	X	X	X	X	X	X	X	X	X
X X	X X											CFAC	435	2000	Calgary																
X X	X X											KJR	384	20M	Seattle					X	X	X	X	X	X	X	X	X	X	X	X
X X	X X	X X							X X	X X		KLZ	394	500	Denver					X	X	X	X								
X X	X X	X X									X X	KOA	322	5000	Denver					X	X	X									
X X	X X	X X	X X	X X								KOIN	319	1000	Portland			X	X	X	X	X	X	X	X	X	X	X	X	X	X
X X	X X	X X	X X	X X								KOMO	306	1000	Seattle			X	X	X	X	X	X	X	X	X	X	X	X	X	X
X X	X X		X X									KSL	300	1000	Salt Lake City					X	X	X	X								
X X	X X											KMO	250	500	Tacoma			X	X												

Hours Shown as Submitted by These Stations. For DX Schedule See Page 38

Counterphase for DX: H. A. EVEREST, 1032 N. Ogden Dr. GR. 9915

**WILL SACRIFICE** a \$150 a month, well-appointed, two-room office suite in the L. N. Van Nuys Building, Seventh and Spring Streets, Los Angeles, for \$100 per month. Lease has one year to run.

Inquire at  
**RADIO DOINGS**

407 East Pico St.

WESTmore 1401

Los Angeles, Calif.





# WEDNESDAY TIME TABLE

ALL TIME TABLES ADJUSTED TO PACIFIC TIME  
(X) Indicates Station Is On the Air

10-12 A.M.		12-2 P.M.		2-4 P.M.		4-6 P.M.		STATIONS			6-8 P.M.		8-10 P.M.		10-12 P.M.		
10-00-10-30	10-30-11-00	11-00-11-30	11-30-12-00	12-00-12-30	12-30-1-00	1-00-2-00	2-00-2-30	2-30-3-00	3-00-3-30	3-30-4-00	4-00-4-30	4-30-5-00	5-00-5-30	5-30-6-00			
CALL		Wave Length Meters		Power in Watts		STATION											
<b>SOUTHERN CALIFORNIA</b>																	
									KELW	560	250	Burbank.	X	X	X	X	X
									KGEF	517	1000	Los Angeles	X	X	X	X	X
X	X	X							KCFI	467	4000	Los Angeles	X	X	X	X	X
		X	X						KFCR	413	50	Santa Barbara			X	X	
							X	X	KHJ	485	500	Los Angeles		X	X	X	X
									KWIC	387	50	Inglewood	X	X	X	X	X
		X	X						KFBC	380	50	San Diego			X	X	X
X	X		X	X	X	X	X	X	KWTR	370	500	Hollywood	X	X	X	X	X
X	X		X		X	X		X	KNX	337	750	Los Angeles	X	X	X	X	X
		X	X			X	X		KGEH	326	100	Long Beach	X	X			
			X						KPSN	316	1000	Pasadena.	X	X			
		X	X	X	X	X	X	X	JAMB	301	100	Tia Juana, Mex					
X	X	X					X	X	KFWC	295	100	San Bernardino				X	X
					X	X			KTBI	294	750	Los Angeles		X	X	X	X
									KSMR	283	100	Santa Maria	X	X	X	X	X
X	X	X	X			X	X	X	KFSG	275	500	Los Angeles	X	X	X	X	X
									KWTC	263	250	Santa Ana		X	X		
		X	X					X	KFWB	252	500	Hollywood	X	X	X	X	X
									KFSD	246	1000	San Diego	X	X	X	X	X
					X	X	X		KNRC	238	1000	Santa Monica	X	X	X	X	X
X	X	X	X	X	X	X	X	X	KFON	232	750	Long Beach	X	X	X	X	X
X	X	X	X						KPPC	229	50	Pasadena.		X	X	X	X
	X	X							KFQZ	226	500	Hollywood	X	X	X	X	X
									KGFH	219	100	La Crescenta.		X	X	X	X
		X	X						KFWO	211	250	Catizina	X	X	X	X	X
	X	X	X				X	X	KFVD	205	500	Venice	X	X	X	X	X
<b>NORTHERN CALIFORNIA</b>																	
									KLX	508	500	Oakland.	X	X	X	X	X
X		X	X	X		X	X	X	KPO	428	1000	San Francisco	X	X	X	X	X
		X	X	X					KYA	400	1000	San Francisco	X	X	X	X	X
	X	X	X	X	X	X	X	X	KGO	381	4000	Oakland.	X	X	X	X	X
X									KQW	333	500	San Jose	X	X	X	X	X
							X	X	KTAB	303	1000	Oakland.	X	X	X	X	X
X	X	X	X	X	X		X	X	KFRC	268	500	San Francisco	X	X	X	X	X
X	X								KFUS	256	50	Oakland.		X	X		
	X							X	KRE	256	100	Berkeley					
		X	X						KFWI	250	500	San Francisco	X	X	X	X	X
									KZM	240	100	Oakland.		X			
<b>NORTHERN AND WESTERN STATES</b>																	
X	X	X		X	X				KGW	491	1000	Portland.	X	X	X	X	X
		X	X	X			X		KFOA	454	1000	Seattle		X			
									KEX	447	4000	Portland.	X	X	X	X	X
		X	X						CFAC	435	2000	Calgary		X	X	X	
									KFFF	422	1000	Denver.	X	X	X	X	X
X	X	X			X	X		X	KJRR	384	20M	Seattle	X			X	X
							X	X	KLZ	364	500	Denver.	X	X	X	X	X
X	X	X	X				X	X	KOA	322	5000	Denver.	X	X	X	X	X
X	X	X			X	X		X	KUIN	319	1000	Portland.	X	X	X	X	X
X	X	X	X	X	X	X	X	X	KOMO	306	1000	Seattle	X	X	X	X	X
								X	KSL	300	1000	Salt Lake City	X	X	X	X	X
									KOWW	285	500	Walla Walla		X		X	X
									KGAC	280	500	Corvallis, Ore.		X	X	X	X
X	X		X		X				KFWH	254	100	Eureka		X	X	X	X
X	X			X	X	X			KMO	250	500	Tacoma		X	X		









Rear view above shows large compartment with ample space for batteries, battery charger, or battery eliminator, which are entirely concealed from view. Back is open for ventilation of batteries.



(Pat. Applied For)  
**Model 200, with 22-inch  
 Cone Loudspeaker**



Above is shown the Cone Loudspeaker, with its Panel, which is quickly and easily removable, allowing access to all batteries, battery charger, battery eliminator or other equipment and wiring.

Model 200

**\$35**

**Console with Cone  
 Loudspeaker  
 Ready for Set and  
 Batteries**

This Windsor Cone Loudspeaker Console is equipped with a 22-inch Windsor Cone Loudspeaker. Its top is 30 in. x 17 in. and is 29 in. high. The battery shelf provides ample space for batteries, charger, battery eliminator and other equipment. Beautifully finished in either Mahogany or Walnut color.

# A Revelation in Radio Reproduction



**Model 210**  
 22-inch Cone  
 Loudspeaker  
 with Panel and  
 easel back

**\$18.00**

(Pat. applied for)

beauty, just as it entered the microphone.

\*\*\*

This 22-inch Windsor Cone Loudspeaker will reproduce the softest crooning lullaby in a softly lighted room, or the full throated march music of a band in an auditorium—both with perfect fidelity of sound and tone. The Windsor Cone Loudspeaker Console is the greatest value in the world of radio. When compared with the average cost of cone-type loudspeakers of even similar size, the cost of the complete Windsor—cone loudspeaker and console—its amazingly low.

\*\*\*

The Windsor Cone and Horn Loudspeakers, combined with attractive pieces of furniture in many models, are being demonstrated by recognized dealers everywhere. Go to your dealer today and examine this astonishing new Cone Loudspeaker Console. If he happens not to have one, write to us and we will tell you the name of the nearest store at which you can see and hear one.

\*\*\*

## NOTE TO DEALERS

Write or wire today for details of the highly profitable Windsor selling line.

At last—a cone loudspeaker that reproduces *all* the tones as they are broadcast. From the deep voiced tuba of an orchestra to the softest note of a vocal solo—*every* tone—*every* sound is reproduced in all its

As a piece of furniture, the Windsor Cone Loudspeaker Console is of such manifest high quality and attractive design as to be a welcome addition to any home. Finished in Mahogany or Walnut color.

**WINDSOR FURNITURE CO.**  
 World's Largest Manufacturers and Originators of  
 Loudspeaker Consoles

1420 Carroll Avenue, Chicago, Illinois  
 Los Angeles Branch: 917 Maple Avenue

R. D. 26

**WINDSOR FURNITURE COMPANY**  
 Electrical Department,  
 917 Maple Ave., Los Angeles.

Send me FREE and without obligation circulars of the Windsor line of Cone and Horn Loudspeakers combined with prices of furniture, and name of nearest dealer.

Name.....  
 Address.....  
 Dealer's Name.....  
 City.....State.....

# SATURDAY TIME TABLE

ALL TIME TABLES ADJUSTED TO PACIFIC TIME  
(X) Indicates Station Is On the Air

10-10:30 10-11:00 11:00-11:30 11:30-12:00 12:00-12:30 12:30-1:00 1:00-1:30 1:30-2:00 2:00-2:30 2:30-3:00 3:00-3:30 3:30-4:00 4:00-4:30 4:30-5:00 5:00-5:30 5:30-6:00	10-12 A.M.	12-2 P.M.	2-4 P.M.	4-6 P.M.	STATIONS		6-8 P.M.	8-10 P.M.	10-12 P.M.	10-11:00 11:00-11:30 11:30-12:00	
CALL	Wave Length Meters	Power in Watts	STATION		6:00-6:30 6:30-7:00 7:00-7:30 7:30-8:00 8:00-8:30 8:30-9:00 9:00-9:30 9:30-10:00 10:00-10:30 10:30-11:00 11:00-11:30 11:30-12:00						
<b>SOUTHERN CALIFORNIA</b>											
					[K E L W	560 250	Burbank.	X	X	X	X
					X[K F I	467 4000	Los Angeles	X	X	X	X
		X	X		[K F C H	413 50	Santa Barbara		X	X	
					[K H J	405 500	Los Angeles		X	X	X
					X[K M I C	387 500	Inglewood	X	X	X	X
X	X				[K F B C	360 50	San Diego		X	X	X
		X	X	X	X[K M T R	370 500	Hollywood	X	X	X	X
X		X	X	X	[K N X	337 750	Los Angeles	X	X	X	X
		X			[K F S N	316 1000	Pasadena	X	X	X	X
		X	X	X	[A M B	391 100	Tia Juana, Mex.				
					[K S M R	265 100	Santa Avaria		X		
X	X	X	X		[K F S G	275 500	Los Angeles	X	X	X	X
					[K W T C	263 250	Santa Ana	X	X	X	X
		X	X		[K F W B	252 500	Hollywood	X	X	X	X
					[K F S D	246 1000	San Diego	X	X	X	X
				X	X	[K N R C	238 1000	Santa Monica	X	X	X
X	X	X	X	X	X	[K F U N	233 750	Long Beach	X	X	X
		X	X			[K F Q Z	226 500	Hollywood	X	X	X
					X	[K F Y F	214 25	Uxnard, Calif.	X		
		X	X	X	X	[K F W O	211 250	Catalina	X	X	X
		X	X			[K F V D	205 500	Verice	X	X	X
<b>NORTHERN CALIFORNIA</b>											
					[K F B K	535 100	Sacramento		X	X	X
					[K L X	508 500	Oakland.		X		
X		X	X	X	X	[K P O	428 1000	San Francisco	X	X	X
		X	X	X		[K Y A	400 1000	San Francisco	X	X	X
		X	X	X		[K G O	361 4000	Oakland.		X	X
X						[K Q W	333 500	San Jose	X	X	X
						[K I A B	303 1000	Oakland.		X	
		X	X	X	X	X	[K F R C	268 500	San Francisco	X	X
X					X	[K R E	256 100	Berkeley			
		X	X			[K F U S	256 50	Oakland.	X	X	
						[K N W I	250 500	San Francisco		X	X
						[K Z W I	240 100	Oakland.	X		
						[K M J	234 50	Fresno		X	X
						[K F O U	231 250	Holy City, Calif.		X	X
X	X		X			[K F W H	225 100	Eureka			
<b>NORTHERN AND WESTERN STATES</b>											
X	X	X	X	X		[K G W	491 1000	Portland.	X	X	X
			X		X	[K F O A	454 1000	Seattle	X	X	X
						X[K E X	447 4000	Portland.	X	X	X
						[K F X F	422 1000	Denver.	X	X	X
						[K C C D	410 2000	Vancouver, B. C.		X	X
X			X	X		[K H Q	394 1000	Spokane.	X	X	
X	X	X				[K J R	384 2000	Seattle.	X		
						[K L Z	384 500	Denver.		X	X
X	X	X	X		X	X	[K O A	322 5000	Denver.		X
X	X	X		X	X	X	X	[K O I N	319 1000	Portland.	X
X	X	X	X	X	X	X	X	X	[K O M O	306 1000	Seattle.
						[K S L	300 1000	Salt Lake City	X	X	X
		X	X			[K F J R	263 50	Portland.			
X	X		X	X	X	[K M O	250 500	Tacoma	X	X	X

Hours Shown as Submitted by These Stations. For DX Schedule See Page 38

Counterphase for DX: H. A. EVEREST, 1032 N. Ogden Dr. GR. 9915

# Anten-A-Liminator



Static, extraneous noises, many stations coming in at one time, unsightliness and a fire hazard are some of the disadvantages of an outside aerial.

Why get a jumble of noise from an instrument designed for pleasure?

Manufactured by:  
Geo. E. Browning Co.  
Ogden, Utah

If Your Dealer Can Not  
Supply You

Telephone VAndike 3297  
Or Write

**Scott Sales Co.**

443 S. San Pedro St.  
Los Angeles, Cal.

The result of months of experimenting and exhaustive tests. Many times the selectivity of an outside aerial. Will make it possible for you to separate the lower wave length stations.

Small—Compact. Can be put inside or outside of the cabinet. Quickly installed.

Will take the Chaos out of the Air.



**\$8.50**

See Absolute  
Guarantee  
with Every  
Instrument



# Schedule of DX Stations

Call Letters	Location	W. L. Meters	Power Watts	Schedule of Concert and Dance Music						
				Sun.	Mon.	Tue.	Wed.	Thu.	Fri.	Sat.
WBBM...	Chicago	226	1500	6-10		6-10	6-10	6-10	6-7	6-10
WIBO...	Chicago	226	1000		4-5					10-12
WOWO...	Ft. Wayne, Ind.	227	1000		5-9		5-9	5-9		
WHT...	Chicago	238-400	3500		S.	8-10	8-10	8-10	8-10	8-10
WVAE...	Plainfield, Ill.	242	5000	S.	6-9	6-9	6-9	6-9	6-9	6-9
WOOD...	Grand Rapids, Mich.	242	1000						8-10	8-10
WBAL...	Baltimore, Md.	246	1000	5-6	5-9	5-9	S.	5-9	5-9	S.
WRVA...	Richmond, Va.	256	1000		6-8		6-8	6-8	6-8	
WKAF...	Milwaukee	261	5000		6-8		6-8	6-8	6-8	
WCAR...	San Antonio, Tex.	263	6000		8-9		8-9		8-10	
WENR...	Chicago	266	1000		6-8	6-8	6-8	6-8	6-8	6-8
WGHP...	Detroit	270	1500		S.	5-6	5-6	5-6	5-7	5-6
KGU...	Honolulu	270	500	4-6	5-7	5-7	5-7	6-9	6-9	S.
WHK...	Cleveland	273	1000	9-11	9-11	11-12		9-11	9-11	9-11
KFAL...	Boise, Idaho	280	750	5-7	S.	5-8	5-7	5-8	5-6	5-8
KMOX...	St. Louis	280	5000			7-9		7-9		
WSM...	Nashville, Tenn.	282	1000	4-11	4-11	4-11	4-11	S.	4-11	4-11
WMBF...	Miami, Fla.	284	5000		8-10		8-10			8-10
WPG...	Atlantic City	300	5000	5-10	5-9	5-9	5-10	5-9	S.	5-10
WGN...	Chicago	303	1000	6-8	5-9	5-9	S.	5-9	5-9	5-9
WLIB...	Chicago	303	4000	6-8	8-9	6-9	6-9	6-9	6-9	6-9
KOIL...	Council Bluffs	306	500			6-9	6-9	6-9	6-9	6-9
KDKA...	Pittsburg	309	1000		5-11	8-10	8-10	8-10	8-10	8-10
WABC...	New York	316	5000	S.	6-9	S.	6-9	S.	S.	9-11
WJAZ...	Chicago	330	1500	5-7		6-10	5-9	6-7	5-7	5-7
WBZ...	Springfield, Mass.	333	2000			6-9	6-9	6-9	6-9	6-10
KFAB...	Lincoln, Neb.	341	1000	4-7	5-8	5-9	5-9	5-9	5-9	5-9
WLS...	Chicago	345	5000			6-9		6-9		
WWJ...	Detroit	353	1000	6-9		6-9	6-9	6-9	6-9	6-9
WDAF...	Kansas City	366	1000	4-7	6-7	5-7	5-8	5-8	5-8	5-8
WJJD...	Mooseheart, Ill.	370	1000	S.	6-11	6-11	6-11	6-11	6-11	6-11
KFBU...	Laramie, Wyo.	375	500			6-11	6-11	6-11	6-11	6-11
KTHS...	Hot Springs, Ark.	375	1000		8-10		8-10		8-10	
WGY...	Schenectady, N. Y.	380	5000	7-10	7-10	7-10	7-9	7-9	7-10	7-9
WEAR...	Cleveland	389	1000	6-7	S.	6-9	5-9	5-9	5-9	5-9
WTAM...	Cleveland	389	1000	5-9	5-6	5-9	6-10	5-9	5-9	6-10
WOAI...	San Antonio, Tex.	394	5000	5-7	S.	6-8	6-8	6-8	6-8	S.
PWX...	Havana, Cuba	400	1000	5-7	5-9	5-8	5-8	5-8	5-8	5-7
CYJ...	Mexico City	410	1000	5-7		5-8		5-8	5-8	
KFQB...	Ft. Worth, Tex.	412	2500		6-10	6-10		6-10	6-10	6-10
WCCO...	St. Paul, Minn.	416	5000		5-8	5-8	5-8	5-8		5-8
KFXF...	Denver	422	500	S.	5-11	5-11	5-11	S.	5-11	5-11
WLW...	Cincinnati	422	5000	4-6	4-7	4-7	4-9	4-10	S.	4-7
WSB...	Atlanta, Ga.	428	1000	4-6	5-9	5-9	5-9	5-9	5-9	5-9
WQJ...	Chicago	447	500	5-7	S.	7-11	7-11	7-11	7-11	7-12
WMAQ...	Chicago	448	1000	S.	4-5	4-8	4-8	4-8	4-9	4-9
WJZ...	New York, N. Y.	454	50000	4-8	5-9	5-9	5-9	5-9	5-9	5-9
WBAP...	Ft. Worth, Tex.	476	1500	7-9	7-10	7-9	S.	7-10	7-10	7-10
CYL...	Mexico City	480	1000		7-9	7-9	7-10	7-9	7-9	7-10
WOC...	Davenport, Iowa	484	5000	4-9	S.	5-9	5-9	5-9	5-9	5-8
WEAF...	New York City	491	5000		5-9	5-9	5-9	5-9	5-9	5-9
WJR...	Detroit	517	5000	7-8	S.	5-7	7-9	6-7	S.	8-9
WOW...	Omaha	526	1000	7-9	7-9	7-9	S.	7-9	7-9	7-9
WNYC...	New York City	526	1000		5-8	5-8	5-8	5-8	5-8	5-8
WHO...	Des Moines	526	5000	5-8	5-10	5-10	5-10	5-10	5-10	S.
KYW...	Chicago	536	3500	6-9	4-5	6-10	6-10	6-10	6-10	6-10
KSD...	St. Louis	545	500	5-7	6-8	5-7		5-7	5-8	5-8

Hours Shown as Submitted by These Stations Adjusted to Pacific Standard Time

**CROSLY SPECIALISTS** HAVE YOUR CROSLY BALANCED  
 CHILDS' LAB., 1187 W. 24th St., L. A.



**If your Radio acts like this you need a —**



**"DX"**  
*Long Distance*  
**Radio Ground**  
PATENT APPLIED FOR

**\$8.00**  
**PRICE** *Postpaid.*

Some radio receivers, under certain conditions, bring in the same station at many different points on the dial. These "harmonics," by no means the fault of the station coming in, no matter how powerful it may be, develop within the radio receiver and are a source of genuine annoyance.

The "DX" Ground, connected to the antenna post of your radio receiver, will clear up "harmonics" in a most surprising way... bringing in locally broadcasted programs with better tone qualities and modulation than they can be brought in with any antenna equipment.

This newly developed ground clears up radio reception, adds strength to signals of distant stations and improves both tone and volume, and will last forever. No matter what make of radio you have... no matter what conditions in your neighborhood may be... you need the "DX" Radio Ground. It will improve your radio reception in a way that will surprise you. Order yours now.

**UNGAR & WATSON Inc.**  
*National Distributors.*  
**1366 So. Figueroa St. Los Angeles**  
**THE SEROY CO.**

*Distributors for No. Calif. Oregon & Washington.*  
**122 Broadway - Oakland, Calif.**

**ATTENTION Radio Dealers**

Write, phone or telegraph for our liberal dealer proposition. Here's a money maker for you... get a stock now... every radio enthusiast will INSIST on having a "DX" Radio Ground.

# Never Before..Never Again..So Much Built-In Quality for So Little Money-

Reproducer  
Model 400  
\$19<sup>00</sup>



Model 325 - \$52<sup>50</sup>  
Without Accessories

These three dial control, five tubestewart-Warner receivers have made records for both local and distant reception ever since the first one was placed on the market. The tone, volume and selectivity are remarkable... the price puts them within the reach of everyone... the reputation of the manufacturer is sufficient guarantee that actual quality is built right into the products.

The Stewart-Warner radio line also includes a full line of single dial, six tube receivers in both table and console models. Any Stewart-Warner dealer will gladly demonstrate Matched Unit Radio in your own home.



Model 300 - \$52<sup>50</sup> Reproducer -  
Without Accessories Model 415 - \$31<sup>50</sup>

## Los Angeles Dealers

ATWATER RADIO & ELEC. CO.  
3208 Glendale Blvd.

DEAN K. BARRIS  
3100 S. Vermont Ave.

BENSON HARDWARE COMPANY  
416 South Broadway.

BIRONG & BUSHARD  
1717 W. Adams St.

CALIFORNIA RADIO SHOP  
607 South Figueroa St.

CHAPMAN HOUSE SALES CO.  
4374-76 S. Figueroa St.

CLIFF'S RADIO SERVICE  
2635 Dayton Ave.

DON FINKLE  
2207 West Jefferson

A. W. COOPER  
1315 W. 39th St.

HARRY SAVOY  
828 W. Jefferson St.

HOLLAND ELECTRIC SHOP  
5632 Pasadena Ave.

HIDLEY RADIO & BIKE HOUSE  
817 South Main St.

HINES RADIO  
7322 South Broadway

INTERPHONE ELECTRIC CO.  
5510 Montic Vista St.

LESTER RADIO & ELEC. CO.  
4524 South Broadway

LOVINGER'S MELROSE RADIO  
SHOP, 4436 Melrose Ave.

MANGHESTER RADIO CO.  
1822 E. Manchester Ave.

MOORE RADIO SALES CO.  
92nd at Avalon Blvd.

MOHAWK BAT. & RAD. CO.  
1114 Sunset Blvd.

NILSSON & NELSON  
4320 Avalon Blvd.

NORTON & NORTON  
3211 N. Broadway

POTTER RADIO SALES CO.  
1817 W. 54th St.

RADIO SUPER SERVICE CO.  
2014 Venice Blvd.

RADIO SUPER SERVICE CO.  
4649 Russell Ave., at Vermont

CHAS. A. ROBINSON  
4502 S. Normandie

RADIO ELECTRIC SHOP  
762 S. Vermont Ave.

A. C. SINGER  
4127 Pasadena Ave.

SOUTHWEST ELECTRIC &  
RADIO CO., 807 W. Florence Ave.

THAYER ELECTRIC CO.  
2005 Whittier Blvd.

VISSER RADIO AND ELEC. CO.  
4750 Whittier Blvd.

WEST STATES ELECT. CO.  
4751 South Broadway

## Hollywood Dealers

BARROWS & CONKWRIGHT  
5545 Sunset Blvd.

DORAN'S ELECTRIC SHOP  
7515 Sunset Blvd.

DORAN'S ELECTRIC SHOP  
8030 Santa Monica Blvd.

GLOW ELECTRIC CO.  
5919 Hollywood Blvd.

MELROSE RADIO SHOP  
5663 Melrose Ave.

C. H. PRESTON & SON  
11285 Ventura Blvd.  
North Hollywood

## Southern California Dealers

ALHAMBRA, LeRoy G. Franklia  
644 W. Main.

ANAHEIM, Holland Electric Co.  
177 W. Center St.

ARROYO GRANDE, J. D. Truitt  
Arroyo Grande Plumbing and  
Electric Shop

ARTESIA, Wm. B. Hayes  
325 N. Main St.

BARSTOW, Barstow Radio Shop

BELLFLOWER, Standard Radio Shop  
501 Somerset St.

BREA, Bennett's Radio Shop  
129 S. Pomona Ave.

CHINO, Woods Radio Company  
418 Sixth St.

COLTON, H. C. Elias  
119 West "T" St.

COVINA, Harold R. Houser  
115 College St.

CULVER CITY, Culver City Radio &  
Elec. Co.  
6715 Washington Blvd.

DOWNEY, H. H. Speaker  
9th and Crawford

EAGLE ROCK, Weaver & King  
5112 Eagle Rock Blvd.

EL SEGUNDO, B. W. McAlister  
110 Grand Ave.

EL MONTE, Weaver & King  
(El Monte Hdw. Co.)

GARDENA, Don Spears  
725 W. 165th St.

GLENDALE, Willard Hellman  
(Broadway Elec.)

202 E. Broadway

GLENDORA, James M. Reed

HERMOSA BEACH, Rose Radio Store  
246 Camino Real

HUNTINGTON PARK, H. L. (Radio)  
King

119 E. Irvington St.

HYNES, Van & Jenkins

INGLEWOOD, R. D. Aylesworth  
111 N. Market St.

LANCASTER, E. A. Knelp  
BISHOP, Griffith Bros.

LONE PINE, Griffith Bros.

LONG BEACH, Alday & Crandall  
1118 American Ave.

LONG BEACH, The Electrique  
Radio Co.

1719 E. Anaheim

LONG BEACH, Harold A. Nickle  
180 Nieto St.

LONG BEACH, W. L. Horrell  
740 Pine St.

LYNWOOD, Lynwood Elec. Co.  
204 N. Long Beach Blvd.

NEWHALL, C. E. Graham

OCEAN PARK, Crescent Tire and  
Supply Co.

Bar and Main Sts.

ORANGE, Roy Des Larzes  
143 N. Glassell St.

PALMS, Brickell Radio Elec. Co.  
12204 Washington Blvd.

PASADENA, Wyckoff & Verrinder  
1447 North Lake St.

PASADENA, Premier Radio  
11 California St.

PASADENA, DeWilde Radio  
Laboratory

2048 East Colorado Ave.

PASO ROBLES, R. C. Heaton

PICO, Pico Radio Shop

POMONA, George W. Hiatt  
187 E. Third St.

REDONDO, L. & L. Sales Co.  
310 Diamond St.

REDLANDS, J. L. Yount  
100 W. Citrus Ave.

RIVERSIDE, Frank W. Chaney  
906 Market St.

SAN BERNARDINO, Gurr, Smith  
& Gurr

439 Fourth St.

SAN FERNANDO, Willis Rowe

SAN GABRIEL, A. Burman  
3560 E. Huntington Dr.

SAN LUIS OBISPO, Cline Elec. Co.  
986 Monterey St.

SAN PEDRO, San Pedro Furn. Co.  
228 W. Sixth St.

SANTA ANA, Shafer's Music Store  
415 N. Main St.

SANTA BARBARA, Val Folger  
732 State St.

SANTA MARIA, Ford & Smart  
118 E. Main St.

SANTA MONICA, J. S. Suits  
925 Wilshire

SANTA PAULA, The Music Shop  
104 W. Main St.

SATICOY, H. H. Wright  
Sixth and D Sts.

TAFT, L. H. Bird  
610 Center St.

TONOPAH, NEVADA  
Tonopah Electric Company

UPLAND, Jay M. Ross

VENICE, Stewart-Warner Radio  
Studio

1022 Washington Blvd.

WALNUT PARK, Terminal Electric  
1500 Seville St.

WESTMINSTER, Martin Engel  
WHITTIER, H. O. Oldham  
128 S. Greenleaf

WILMINGTON, S. F. Clausen  
716 W. Anaheim St.

Remember - Stewart-Warner Radio Uses  
the Famous U.S. Navy Receiving Circuit -  
Stewart-Warner Products Service Station  
{ Wholesale Distributors Stewart-Warner Radio }  
1366 South Figueroa Street - LOS ANGELES



**LESLIE ADAMS**  
Announcer

## Los Angeles, California—467 Meters

# KFI

4000 WATTS—640 KILOCYCLES

Radio Central Super-Station of Earle C. Anthony, Inc.  
1000 S. Hope. Phone WE. 0331. After P. M., WE. 0337  
Class "B" 5000-Watt W. E. Sta., Operating on 4000 Watts  
ROBERT HURD, Program Manager

DAILY EXCEPT SUNDAY—

6:15 p. m.—Radiotorial.

6:30 p. m.—Vest Pocket.

MONDAY, WEDNESDAY AND FRIDAY—

KFI Woman's Interest Dept. Under the Direction of Agnes White.

- 10:20 to 10:40 a. m.—Furnishings for the home by Agnes White, director of the Dept.  
10:40 to 11:00 a. m.—Betty Crocker—Gold Medal Flour Home Service Talks.  
11:10 to 11:30 a. m.—Food talks by Agnes White.

WEEK COMMENCING SUNDAY, MARCH 13, 1927

SUNDAY, MARCH 13—

- 10:00 a. m.—Services under direction of Los Angeles Church Federation.  
2:45 p. m.—Standard Oil Company of California presents the San Francisco Symphony Orchestra, Alfred Hertz, Conductor, broadcast simultaneously by KFI, KPO and KGO.  
6:00 p. m.—Program by the Russian Academy of Musical Art Trio.  
6:55 p. m.—Father Ricard's Sunspot Weather Forecast.  
7:00 p. m.—Aeolian Organ Recital, Alex Reilly at the console.  
8:00 p. m.—Packard Classic Hour. Program by Mary Christine Albin Trio.  
9:00 p. m.—Bob Bottger and his Venetians Dance Orchestra.  
10:00 p. m.—Packard Six Orchestra, Bill Hennessy, director.

MONDAY, MARCH 14—

- 6:30 p. m.—Gamut Male Quartet.  
7:00 p. m.—Johnston and Farrell's Music Box Hour, direction of Gene Johnston.  
8:00 p. m.—Cello Recital by Ferenz Steiner, with La Verne Beal, pianist,  
9:00 p. m.—Ruth Palethorps, soprano, with Lewis A. Kerwin, accompanist,  
10:00 p. m.—Program presented by Meiklejohn Bros.

TUESDAY, MARCH 15—

- 5:30 p. m.—The Dragon Hawaiians.  
6:00 p. m.—Anna Potvin.  
7:00 p. m.—Hale Hooper, tenor, and the Los Angeles Fire Dept. Orchestra.  
8:00 p. m.—Gattone String Quartet, James Burroughs, tenor; Charles Myers, accompanist.  
9:00 p. m.—Thomas Wallace, baritone; Margaret Vail, contralto, and Frances Brockett Kellogg, concert pianist.  
10:00 p. m.—Azure Music Club, with Glenn Edmunds and his Collegians Dance Orchestra.

WEDNESDAY, MARCH 16—

- 12:10 to 12:50 p. m.—Christian Science Lecture from the Philharmonic Auditorium.  
5:30 p. m.—Sebastian's Cotton Club Orchestra.  
7:00 p. m.—Ray Fisher's Original Victorians Dance Orchestra.  
7:30 p. m.—Nick Harris, Detective Stories.  
7:45 p. m.—William MacDougall, Scotch Comedian.  
8:00 p. m.—Program by the Calpet Orchestra, Pryor Moore, director.  
9:00 p. m.—The Los Angeles Philharmonic Orchestra, Walter Henry Rothwell, conductor, presented from the stage of the Philharmonic Auditorium, complete public performance, presented by the Standard Oil Company of California, broadcast simultaneously by KFI, Los Angeles, and KPO, San Francisco.

THURSDAY, MARCH 17—

- 5:30 p. m.—Legion Night Club Orchestra.  
7:00 p. m.—Weekly, semi-classical program by the University of Southern California.  
8:00 p. m.—KFI Drama Hour.  
8:30 p. m.—Grace Mead, soprano.  
9:00 p. m.—Program presented by Alma Frances Gordon, contralto; the Muriel Dae String Quintet, and Lilyan Ariel, pianist.  
10:00 p. m.—Program of Modern Classical Music by Gretchen Garrett, with String Trio.

FRIDAY, MARCH 18—

- 5:30 p. m.—Henry Starr, pianist and vocalist.  
7:00 p. m.—Aeolian Organ Recital, Alex Reilly at the console;  
8:00 p. m.—Program by Paul Roberts and Leslie Adams.  
9:00 p. m.—Heddie Gehl Trio.  
10:00 p. m.—Packard Ballad Hour, Emma Kimmel, soprano; Harry Rowe, baritone; Edna Bilea, contralto, and Doris Greenwood, accompanist.

SATURDAY, MARCH 19—

- 5:30 p. m.—Del Monte Orchestra.  
7:30 p. m.—Felipe Delgado, and Edna Clark Muir, pianist—Media Hora Espanola.  
8:00 p. m.—Virginia Flohri, soprano; Will Garroway, accompanist; James Burroughs, and the Mission Bell Orchestra, Pryor Moore, director, on the Los Angeles Soap Company program, presented simultaneously by KFI, Los Angeles, and KPO, San Francisco.  
9:00 p. m.—J. Maurice Woods, baritone; Ethel Glassman Clark, soprano.  
10:00 p. m.—Packard Radio Club.  
11:00 p. m.—KFI Midnight Frolic; Mosby's Dixieland Blue Blowers and Soloists.

Copyright 1927 by Earle C. Anthony, Inc.  
Program Published as Submitted by the Station.

# for Kellogg, Gilfillan and these great accessories Sherman, Clay & Co!

Good  
Territory  
Still Open  
to Live  
Dealers



The KELLOGG, because of its special method of "RFL" inductive tuning, is just as efficient on 550-meter wavelengths as on 220-meter lengths. Amplifies equally over entire range of dial. Dial is divided into wave "zones,"—easy to tune from low to high in a flash.

Table Model \$230.00.  
Console Model \$375.00

*Coast Distributors—*

## Sherman, Clay & Co.

*Victor Distributors*

Los Angeles: 10th and Santee Sts.  
San Francisco: 536 Mission St.  
Oakland: 5175 Telegraph Ave.  
Portland, 487 Glison St.  
Seattle: Republican St. and Terry Ave.  
Spokane: 330 West Sprague Ave.

**Victor**  
loudspeakers

**Rola**  
cone speakers

**R. C. A.**  
radiotrons

**Eveready**  
batteries

**Philco**  
batteries and  
socket powers

**Westinghouse**  
"Auto-Power"  
A-Battery  
eliminators

**All-American**  
B-Battery  
eliminators

**O'Neil**  
cone loud-  
speakers

**Brach**  
relay switches

**Gilfillan**  
receiver

**Kellogg**  
receiver

For information as to DEALER TERRITORY clip and mail this to nearest Sherman Clay & Co. wholesale branch. (R. D.)

Name \_\_\_\_\_  
Address \_\_\_\_\_  
Interested in \_\_\_\_\_





"Uncle John" Daggett  
Announcer

## Los Angeles, California—405.2 Meters

# KHJ

500 WATTS—740 KILOCYCLES

Times Bldg., First and Broadway, Los Angeles  
Owned and Operated by Los Angeles Times

JOHN S. DAGGETT, Manager and Program Announcer  
Phone MET. 0700

"Kindness, Happiness and Joy"

NIGHTLY EXCEPT SUNDAY AND MONDAY—

7:30 p. m.—Scripture Reading.

WEEK COMMENCING SUNDAY, MARCH 13, 1927

### SUNDAY, MARCH 13—

10:00 a. m.—Sermon from the KHJ studio by Rev. Martin Thomas, pastor of First Presbyterian Church of San Pedro.

10:30 a. m.—Morning services from the First Methodist Episcopal Church, Sibley G. Pease, organist.

7:00 to 8:00 p. m.—Evening services from the First Methodist Episcopal Church.

8:00 to 10:00 p. m.—News items. Program presenting Frederick MacMurray, viola; Louise Miller, pianist, and others.

### MONDAY, MARCH 14—

Silent all day.

### TUESDAY, MARCH 15—

2:30 p. m.—Bridge Game.

6:00 to 6:30 p. m.—KHJ Trio and J. Walter Leopold.

6:30 p. m.—Children's Program, including: Queen Titania with Her Sandman; Charles D. McRoy's Harmonica Band; George Kerr, Mandolin soloist and other children.

7:40 p. m.—H. M. Robertson, "Dogs."

8:00 to 10:00 p. m.—Musical program.

10:00 to 11:00 p. m.—Los Angeles Railway Orchestra.

### WEDNESDAY, MARCH 16—

2:30 p. m.—Fred McNabb, "Garden Talk."

6:00 to 6:30 p. m.—KHJ Trio and J. Walter Leopold.

6:30 p. m.—Children's Program, presenting: Dick Winslow, juvenile reporter; Louis Jane Campbell, "Blue Eyes"; Patricia Eccleston, "Little Daffodil"; Vivian Marple, "Blue Bell of KHJ"; Glenn Fitz, "Optimistic Mascot"; Viola Essen, "B. B." and Joseph Rhodes, 11-year-old cornet soloist.

7:40 p. m.—Dr. Mars Baumgardt, "Astronomy."

8:00 to 10:00 p. m.—News Items. Varied program.

10:00 to 11:00 p. m.—Jinnistan Vale Orchestra.

### THURSDAY, MARCH 17—

6:00 to 6:30 p. m.—KHJ Trio and J. Walter Leopold.

6:30 p. m.—Children Program, presenting: Dickie Brandon, reader; June Brandon, contralto; Joyce Coad, "Little Red Riding Hood"; Rosetta Lewin, "Curly Locks"; Jeanne De Bard, "Bonnie Jeanne," and Kathryn Thompson, "Nature Talks."

7:40 p. m.—Dr. Philip M. Lovell.

8:00 to 10:00 p. m.—News Items. Program De Luxe, presenting: Zoellner Quartet, Leo H. Sansiper, Russian baritone; Louise Miller and Arthur Edwin Wake, assistant pastor of The Wilshire Presbyterian Church.

10:00 to 11:00 p. m.—Glenn Edmunds and His Varsity Four.

### FRIDAY, MARCH 18—

6:00 to 6:30 p. m.—KHJ Trio and J. Walter Leopold.

6:30 p. m.—Children's Hour with Marguerite Bringham, "Nightingale"; Roberta Bush, "Firefly of KHJ"; Henrietta Poland, "Forget Me Not"; Richard Headrick, "Little Minister"; aCatherine Cotter, "Sweetheart of Radioland"; Margaret Bond, violinist; Bettie-mae Pfefferkorn, "Bob O' Link."

7:40 p. m.—Thomas F. Ford, "Book Reviews."

8:00 to 10:00 p. m.—News Items. Program presenting: Grace Currey, harpist; Naomi Sweeney Brown, "The California Mocking Bird," and many others.

9:00 p. m.—Talk on International Relations.

### SATURDAY, MARCH 19—

6:00 to 6:30 p. m.—KHJ Trio and J. Walter Leopold.

6:30 p. m.—Children's Hour, presenting: Nona Clapp, "Sunshine Fairy"; Dolly Wright, "Dolly of Radioland"; Arthur Stevens, "King Arthur"; Marjorie Genevieve Lowe, "June Bug of KHJ"; Mercedes Marlowe, "Boy Girl of KHJ"; Josephine Adair, reader.

8:00 to 10:00 p. m.—News Items. Frolic evening presenting: Los Angeles Railway Hawaiian Quartet, Mr. and Mrs. Benjamin Sears, "Old Time Fiddler" and Husking Bee Dancers, E. A. Mulford, "Dixie Dan," Mammy Lou of KHJ and others.

Program Published as Submitted by the Station.

## The Catalina Island Swim

One of these sets accompanied Mrs. Margaret Hauser in her swim.  
Several of the swimmers had this set on their pilot boat.



## The Companionable Set

*Light weight—easily handled—can be taken any place.  
Perfect reproduction, selectivity, volume; beautifully designed.  
Will Fit in Any Setting.*

*The Lowest Priced Set of Its Kind on the Market.*

ON DISPLAY IN LOS ANGELES AT

The Ambassador Hotel                      The Biltmore Hotel  
Subway Terminal Waiting Room (between 4th and 5th on Hill St.)  
13 Mercantile Arcade

Distributed by

Johnson Radio Co., 688 Geary Street, San Francisco  
The Radio Studios, 1207 Fourth Ave., Seattle

## KEMPER RADIO LABORATORY

1236 Santee St.

LOS ANGELES

Westmore 2504

Makers of Kemper Ampliphonic Console



HAROLD ISBELL  
Announcer

## Hollywood, California—337 Meters

# KNX

750 WATTS—890 KILOCYCLES  
LOS ANGELES EVENING EXPRESS  
Paul G. Hoffman's Studebaker Bldg., 6116 Hollywood  
Blvd., Hollywood. Phone HEMstead 4101  
NAYLOR ROGERS, Manager and Program Director  
GLEN RICE, Asst. Manager.  
"The Voice of Hollywood"

### DAILY EXCEPT SUNDAY—

- 6:45 to 8:00 a. m.—Exercises by Dr. P. M. Seixas, courtesy of Producers of Mission Orange Juice.  
8:00 a. m.—Inspirational talk and morning prayer.  
8:55 a. m.—Time signals from Washington, D. C.  
9:00 a. m.—Radio Shopping News.  
10:00 a. m.—Town Crier of the Day's morning message.  
10:30 a. m.—Kate Brew Vaughn Director Household Dept., Evening Express, except Friday and Saturday.

Economics

- 12 noon—Magnavox Radio Orchestra, courtesy of Listenwaller & Gough.  
12:30 p. m.—W. F. Alder Travelogue.  
1:30 p. m.—The Book Worm.  
2:00 p. m.—Radio Trades Association, musical program.  
4:00 p. m.—Lost and Found Column.  
4:55 p. m.—Market reports.  
5:00 p. m.—Optimists Daily Messages, presenting the Optimist Male Quartet.  
5:30 p. m.—Orthophonic Victrola.  
6:00 p. m.—Biltmore Hotel Orchestra, broadcast from the Biltmore Dining Room.  
6:30 p. m.—Dinner hour concert presenting the Yale Radio Battery Orchestra.

### DAILY EXCEPT SUNDAY AND TUESDAY—

- 11:00 p. m.—Hotel Ambassador, Gus Arnheim's Cocomat Grove Orchestra.  
**SUNDAY, MARCH 13—**  
10:00 a. m.—First Presbyterian Church of Hollywood, Rev. Stewart P. MacLennan.  
2:00 to 4 p. m.—City Park Board musical program.  
4:00 p. m.—Roberts Golden State Band.  
5:15 p. m.—All-Souls Church.  
6:30 p. m.—First Unitarian Church.  
7:00 p. m.—First Presbyterian Church of Hollywood, Rev. Stewart P. MacLennan.  
8:00 p. m.—Circle Theatre Concert Orchestra, and organ recital.

### MONDAY, MARCH 14—

- 8:30 a. m.—McDowell Sisters.  
12:45 p. m.—"C. P. R.'s" Musical Program.  
3:00 p. m.—First Presbyterian Church of Hollywood.  
7:00 p. m.—George J. Birkel Music Co., courtesy program.  
7:30 p. m.—Playlet, courtesy Overell Furniture Company.  
8:00 p. m.—L. W. Stockwell Company, courtesy program.  
9:00 p. m.—B. F. Goodrich Rubber Co., of Akron, Ohio, courtesy program.  
10:00 p. m.—Earl Burnnett's Biltmore Orchestra.

### TUESDAY, MARCH 15—

- 11:00 a. m.—Dr. R. H. Gerber, specialist, Eye Strain and Nervous Diseases.  
12:45 p. m.—Advertising Club Luncheon from Biltmore Hotel.  
3:00 p. m.—Los Angeles Police Department musical program.  
4:00 p. m.—Radio Matinee with Louise Howatt, contralto.  
4:30 to 5:00 p. m.—"C. P. R.'s" Musical Program.  
7:00 p. m.—Wilshire Ionaco Company.  
7:30 p. m.—Fitzgerald Music Company.  
8:00 p. m.—Franklin Building and Loan Association.  
9:00 p. m.—Western Auto Supply Co., courtesy program.

### WEDNESDAY, MARCH 16—

- 12:45 p. m.—"C. P. R.'s" Musical Program.  
3:00 p. m.—Paul Hugon.  
3:30 p. m.—Don Warner, popular pianist.  
7:00 p. m.—George J. Birkel Music Co., courtesy program.  
7:30 to 11:00 p. m.—Feature program.

### THURSDAY, MARCH 17—

- 11:00 a. m.—Nature talk, courtesy Marvel Ant Gelantine Co.  
12:45 p. m.—"C. P. R.'s" Musical Program.  
7:00 p. m.—Organ recital, courtesy of the Overell Furniture Co.  
8:00 to 9:00 p. m.—National Home Equipment Corp.  
9:00 to 10:00 p. m.—Tucker and Charleston.

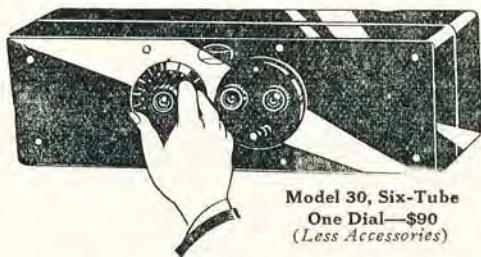
### FRIDAY, MARCH 18—

- 12:45 p. m.—"C. P. R.'s" Musical Program.  
3:00 p. m.—L. A. District Federation of Women's Clubs, musical program.  
4:00 p. m.—National Home Equipment Corp.  
7:00 p. m.—Fitzgerald Music Company.  
7:30 p. m.—Dearden's Furniture Company.  
8:00 p. m.—Davis Perfection Bread Co., courtesy program.  
10:00 p. m.—Major Events from the American Legion Stadium.

### SATURDAY, MARCH 19—

- 3:00 p. m.—Town Crier of the Day and his Pals.  
7:00 p. m.—Stories of insect life by Harry W. McSpadden.  
7:15 p. m.—Announcement of Sunday services of the leading Los Angeles churches.  
7:30 to 10 p. m.—Feature program.  
10:00 p. m.—Earl Burnnett's Biltmore Orchestra.

# ATWATER KENT RADIO



Model 30, Six-Tube  
One Dial—\$90  
(Less Accessories)

#### Other Models

With One Dial  
\$75 and \$145  
(Less Accessories)

#### RADIO SPEAKERS

\$17 to \$24

## *One Magic Dial*

A touch of the fingertips on your Atwater Kent One-Dial Control, and Presto!—you have music. Another touch and you have changed to a different station—perhaps hundreds of miles away.

And you can rely upon Atwater Kent performance—it's always the same. When ever stations within range are on the

air, you'll find them at your finger tips, waiting for that magic touch which brings them into your home, with clear, full, beautiful tones and positively controlled volume.

You'll never know what joy awaits you in Radioland until it is brought to you through an Atwater Kent. Go today to your nearest dealer—he'll gladly let you try one.

**RAY THOMAS INC.**  
*Atwater Kent Distributor*

1248 S. Hope St. WE 6334  
LOS ANGELES



**BILL RAY**  
Announcer

## Hollywood, California—252 Meters

# KFWB

500 WATTS—1190 KILOCYCLES  
WARNER BROS. MOTION PICTURE STUDIOS  
Warner Bros. West Coast Studio, 5842 Sunset Blvd.  
GERALD L. KING, Mgr. WM. RAY, Asst. Mgr.  
Phone GL. 9461  
"Movie Land"

### DAILY EXCEPT SUNDAY—

- 12:30 to 1:30 p. m.—Classified Hour.  
5:40 to 6:00 p. m.—Beauty Talk.  
6:00 to 7:00 p. m.—Pontiac Six Dinner Hour.  
10:00 to 11:00 p. m.—Musical program from Mayfair Hotel.  
11:00 to 12:00 p. m.—Dance music from El Patio Ballroom.

### MONDAY, TUESDAY AND WEDNESDAY—

- 5:00 to 5:40 p. m.—Children's Hour.

### WEEK COMMENCING SUNDAY, MARCH 13, 1927

#### SUNDAY, MARCH 13—

- 2:00 to 3:00 p. m.—Organ Recital on the world's mightiest organ, located in Roosevelt Memorial Park, Los Angeles, broadcast by 6XBR and rebroadcast by KFWB.  
8:30 to 9:00 p. m.—Program by courtesy of the Southern California Music Company.  
9:00 to 11:00 p. m.—Warner Bros. Frolic, introducing Frances St. George, LeRoy Kullberg and his uke; Dan Gridley, tenor; Evelyn Little Shearill, soprano; Fred Till, accordion solos; Harry G. Keiper and his Movieland Orchestra, and others.

#### MONDAY, MARCH 14—

- 7:00 to 8:00 p. m.—Program by courtesy of J. N. Pyles National Detective Service, introducing Ernest Burley, tenor; Pyles National Detectives Concert Orchestra; Mr. J. N. Pyles will give a brief talk.  
8:00 to 8:10 p. m.—Daily News Items.  
8:00 to 9:00 p. m.—Ruth Michelson, blues songs; Honeywell Twins, popular numbers; Owen Fallon's Californians.  
9:00 to 10:00 p. m.—Frank Berry, tenor; Warner Bros. European Novelty Orchestra. El Patio Ballroom.

#### TUESDAY, MARCH 15—

- 10:45 to 11:00 a. m.—Enid Garnett on "Feminine Fads and Fancies."  
4:45 to 5:00 p. m.—Dr. L. P. Clarke on "Diet."  
7:00 to 7:30 p. m.—Program by courtesy of the Southern California Music Company.  
7:30 to 8:00 p. m.—Dan Santos' Hawaiian Trio.  
8:00 to 9:00 p. m.—Art Goodstein, popular songs; Jackie Lucas, blues songs; Hollywood Six Orchestra.  
9:00 to 10:00 p. m.—Franklyn Colson, dramatic tenor; Winifred Tennell Trio.

#### WEDNESDAY, MARCH 16—

- 10:45 to 11:00 a. m.—Enid Garnett on "Feminine Fads and Fancies."  
7:00 to 7:30 p. m.—Thirty minutes of sunshine by Charles W. Hamp, director of radio activities for the Iona Company, presenting the Ionaco.  
7:30 to 8:00 p. m.—Warner Bros. Orchestra.  
8:00 to 9:00 p. m.—Ward Hill, blues songs; June Parker, blues songs; Glen Edmunds and his Collegians.  
9:00 to 10:00 p. m.—Ernest Burley, tenor; Marguerite LeGrand's String Trio.

#### THURSDAY, MARCH 17—

- 10:45 to 11:00 a. m.—Enid Garnett on "What the Well Groomed Woman of Today Is Doing With Her 'Crowning Glory.'"  
5:30 to 6:30 p. m.—Special St. Patrick's Day program by courtesy of Myers Electric Co.  
7:30 to 8:00 p. m.—Program by courtesy of the Southern California Music Company.  
8:00 to 9:00 p. m.—Ed Robinson and his ukulele; Ann Grey, blues songs; Warner Bros. Hawaiian Trio.  
9:00 to 10:00 p. m.—Frank Barry, tenor; Ray Bailey's String Orchestra.

#### FRIDAY, MARCH 18—

- 10:45 to 11:00 a. m.—Enid Garnett on "Feminine Fads and Fancies."  
7:00 to 8:00 p. m.—Warner Bros. Hawaiian Trio.  
8:00 to 9:00 p. m.—Frances St. George, KFWB Jazzmania Girl; Jack Medford, popular songs; Warner Bros. Orchestra.  
9:00 to 10:00 p. m.—Melody Makers' Hour; Studio Chatter at 9:30.

#### SATURDAY, MARCH 19—

- 7:00 to 8:00 p. m.—Carl Dye and his Melody Makers; Harry Monahan, popular songs.  
8:00 to 9:00 p. m.—Program by courtesy of the Mona Motor Oil Company, featuring Alma Brown, soprano; Mona Motor Oil Company String Orchestra.  
9:00 to 10:00 p. m.—John Rumbles, baritone; Evelyn Little Shearill, soprano; Warner Bros. String Trio.

*Program Published as Submitted by the Station.*

**Stromberg-Carlson**

**IMPORTANT ANNOUNCEMENT  
TO STROMBERG-CARLSON OWNERS  
(OF INTEREST TO ALL OWNERS OF RADIO SETS)**



In keeping with their policy of "No Obsolescence" the STROMBERG-CARLSON TELEPHONE MANUFACTURING COMPANY announces that a definite and convenient method has been evolved by which owners of STROMBERG-CARLSON RECEIVERS other than the late six-tube and the new five-tube models may have their receivers re-wired to incorporate the improved audio system and facilities for using STROMBERG-CARLSON socket-power equipment and the new power-amplifier tube. STROMBERG-CARLSON RECEIVERS are permanent. They are built to withstand many years of service. By means of this method no STROMBERG-CARLSON receiving set need ever become obsolete.

All work relative to the changing over of the old type of receivers is to be done under factory supervision at 1224 Wall Street, Los Angeles. Consult the nearest Franchised Dealer or write direct to the Authorized Southern California Distributors—

**WESTERN RADIO, Inc.**

*Distributors of Fine Radio Merchandise Since 1919*

1224 Wall Street  
LOS ANGELES

WEstmore  
3 3 3 8

*Ask Your Dealer About Western Radio Classified Tube Service*

**Stromberg-Carlson**



G. ALLISON PHELPS  
Manager and Announcer

## Hollywood, California—370.2 Meters

# KMTR

500 WATTS  
KMTR RADIO STATION  
1025 N. Highland Avenue. Telephone HOLLY 3028  
Owned and Operated by C. C. JULLIAN  
FORBES W. VAN WHY, Engineer-in-Charge

### DAILY EXCEPT SUNDAY—

- 7:00 to 7:30 a. m.—Prof. Barclay L. Severn's Setting-Up Exercises.  
9:00 to 10:00 a. m.—KMTR Buyer's Hour, featuring Hatch Graham.  
12:00 to 12:30 p. m.—Leighton's Arcade Cafeteria Orchestra.  
12:30 to 1:30 p. m.—Who's Who and What's Happening.  
1:30 to 2:30 p. m.—Radio Press Agent Hour.  
2:30 to 3:30 p. m.—KMTR Tea Dance Program.  
3:30 to 4:00 p. m.—Whispering Jack Don and His Guitar, courtesy Dyn-O-Mag Co.  
4:00 to 4:15 p. m.—Vacation Days.  
5:30 to 6:00 p. m.—White King Male Quartet and Mona Content, pianist, courtesy Los Angeles Soap Co.  
6:00 to 6:15 p. m.—Nightly Doings.  
6:15 to 7:00 p. m.—Leighton's Arcade Cafeteria Orchestra, George Redman, director.  
7:00 to 7:30 p. m.—Fitzgerald Music Company, courtesy program.  
10:00 to 11:00 p. m.—Miller's Cafe Lafayette Dance Orchestra, courtesy of Chapman Ice Cream Co.

### WEEK COMMENCING SUNDAY, MARCH 13, 1927

#### SUNDAY, MARCH 13—

- 5:30 to 6:15 p. m.—White King Male Quartet, courtesy Los Angeles Soap Co.  
6:15 to 6:30 p. m.—Nightly Doings.  
6:30 to 8:00 p. m.—Miller's Cafe Lafayette Concert Orchestra, courtesy of Chapman Ice Cream Co.  
8:00 to 9:30 p. m.—Loren Powell's Little Symphony.

#### MONDAY, MARCH 14—

- 11:45 to 12:00 noon—Golf talk by S. E. Connolly of L. A. Athletic Club.  
12:30 to 1:30 p. m.—Who's Who and What's Happening in Pomona.  
4:15 to 4:45 p. m.—J. T. Redding, representing Wilshire's Ionaco.  
7:30 to 8:00 p. m.—La Vina Investment Company, courtesy program.  
8:00 to 9:00 p. m.—Eureka Vacuum Cleaner Company, courtesy program.  
9:00 to 10:00 p. m.—Precision Electric Manufacturing Company, courtesy program

#### TUESDAY, MARCH 15—

- 10:44 to 10:15 a. m.—Charles Hamp, representing the Iona Company.  
10:15 to 11:00 a. m.—Georgia O. George, "The Physiology and Psychology of Beauty."  
11:00 to 12:00 noon—Talk by Madame Alene.  
12:30 to 1:30 p. m.—Who's Who and What's Happening in Whittier.  
4:15 to 5:00 p. m.—Le Roy Parry and His Elite Dance Orchestra.  
7:30 to 8:00 p. m.—Courtesy program.  
8:00 to 9:00 p. m.—Maxwell House Coffee Company, courtesy program.  
9:00 to 10:00 p. m.—Hollywood Storage Company, courtesy program.

#### WEDNESDAY, MARCH 16—

- 10:00 to 10:30 p. m.—Dr. S. J. Mathieson, pastor of the Hollywood Christian Church.  
12:30 to 1:30 p. m.—Who's Who and What's Happening in Anaheim.  
4:15 to 4:30 p. m.—Rev. C. E. B. Ward, "Better Home Life."  
4:30 to 5:30 p. m.—Dr. Wesley M. Barrett, "Perfect Eyesight without Glasses."  
7:30 to 8:00 p. m.—Mignon Trio.  
8:00 to 9:00 p. m.—Safeway Stores, courtesy program.  
9:00 to 10:00 p. m.—Hollywood Storage Company, courtesy program.

#### THURSDAY, MARCH 17—

- 10:00 to 10:05 a. m.—Fifteen minutes of Sunshine with Charles Hamp.  
10:15 to 10:45 a. m.—Dr. Paul J. Dorosh, "Diet Question Box."  
10:45 to 11:45 a. m.—Georgia O. George, "Psychology of Beauty."  
11:45 to 12:00 noon—Golf Talk by S. E. Connolly of the Los Angeles Athletic Club  
12:30 to 1:30 p. m.—Who's Who and What's Happening in Glendale.  
4:15 to 4:45 p. m.—J. P. Redding, representing Wilshire's "Ionaco"  
7:30 to 8:00 p. m.—Courtesy program.  
8:00 to 10:00 p. m.—Ruth Roland night.

#### FRIDAY, MARCH 18—

- 10:00 to 10:30 a. m.—Dr. T. J. Coulter, "Dogs and Cats."  
12:30 to 1:30 p. m.—Who's Who and What's Happening in Santa Ana.  
4:15 to 4:45 p. m.—Dr. Lowell C. Frost of the Hollywood High School.  
7:30 to 8:00 p. m.—Thirty Minutes of Sunshine with Charles Hamp.  
8:00 to 9:00 p. m.—Alta Club Ginger Ale Company.  
9:00 to 10:00 p. m.—Rudolph Furniture Company.

#### SATURDAY, MARCH 19—

- 10:00 to 10:15 a. m.—Charles Hamp, representing the Iona Company.  
11:30 to 12:00 noon—Gordon Whitnall of the City Planning Commission.  
12:30 to 1:30 p. m.—Who's Who and What's Happening in Catalina Island.  
4:15 to 4:30 p. m.—Irene Hobson's Beauty Talk.  
4:30 to 5:00 p. m.—Radio Talk to Radio Fans by F. W. Van Why.  
7:30 to 7:40 p. m.—Talk by representative of the Sheriff's office of Los Angeles.  
7:40 to 8:00 p. m.—KMTR Movie Club.  
8:00 to 9:00 p. m.—Bell Post American Legion's Program.  
9:00 to 10:00 p. m.—Program of the Los Angeles Police Department.

Program Published as Submitted by the Station.

## *Selling Like Hot Cakes*

# The Powell 'B' Eliminator

Uncondition-  
ally  
Guaranteed



**\$12<sup>25</sup>**

**Absolutely No Hum**

Operates any set from light socket without the use of expensive and troublesome "B" batteries. A large surplus of power at 100 volts and at a cost of only a few cents a year.

**MORE VOLUME - - MORE DISTANCE**  
**GREATER SATISFACTION**  
**BETTER QUALITY - - BETTER PRICE**

**No Tubes, No Acid and Nothing Else to Buy**

*A ten-day trial with absolute satisfaction or money back*

### **GUARANTEE**

This instrument is the result of months of experimenting and exhaustive tests. The best of materials and workmanship have been combined to insure its satisfaction with the user and it is guaranteed unconditionally for one year. If for any reason it fails to perform satisfactorily it should be returned to the seller, who is instructed to repair or replace, free of charge.

**Call or Telephone VERmont 1619 for Information**

**Powell Manufacturing Co.**

4009 S. Western Ave.

Los Angeles, Calif.





M. E. CARRIER  
Announcer

## Los Angeles, California—294 Meters

# KTBI

750 WATTS—1020 KILOCYCLES  
BIBLE INSTITUTE OF LOS ANGELES  
MR. M. E. CARRIER, Manager  
PROF. H. G. TOVEY, Director of Programs  
Phone ME. 6701

### DAILY EXCEPT SUNDAY—

8:45 to 9:15 a. m.—Devotional Hour.  
2:00 to 3:00 p. m.—Inspirational Hour.

### DAILY EXCEPT FRIDAY AND SUNDAY—

7:15 to 8:00 p. m.—Aunt Martha's Children's Hour.

### WEEK COMMENCING SUNDAY, MARCH 13, 1927

#### SUNDAY, MARCH 13—

10:45 a. m. to 12:30 p. m.—Regular service of the Church of the Open Door.  
3:00 to 4:00 p. m.—Jewish Radio Hour. Rev. David L. Cooper and assistants.  
6:00 to 7:00 p. m.—Radio Vesper Service. Sermon by Dr. John M. McInnis.  
7:15 to 9:30 p. m.—Regular evening service of the Church of the Open Door.

#### MONDAY, MARCH 14—

8:00 to 9:00 p. m.—Program directed by Ben Pierson.

#### TUESDAY, MARCH 15—

8:00 to 9:00 p. m.—Bible exposition by Dr. W. H. Manhardt.

#### WEDNESDAY, MARCH 16—

9:15 to 9:45 a. m.—Sylvia's Rainbow Hour.  
8:00 to 9:00 p. m.—Bible exposition by Dr. John McNeill.

#### THURSDAY, MARCH 17—

8:00 to 9:00 p. m.—Bible exposition by Dr. M. E. Dodd.

#### FRIDAY, MARCH 18—

9:15 to 9:45 a. m.—Sylvia's Rainbow Hour.  
6:15 to 7:00 p. m.—Aunt Martha's Children's Hour.  
7:00 to 8:00 p. m.—Exposition of International Sunday School lesson by Rev. Hubbard.  
8:00 to 9:00 p. m.—Bible exposition by Dr. John McNeill.

Program Published as Submitted by the Station.



G. N. NICHOLS  
Announcer

## Los Angeles, California—275.1 Meters

# KFSG

ANGELUS TEMPLE, ECHO PARK, Fitzroy 5121  
AIMEE SEMPLE McPHERSON, Founder, President  
RODERICKE MORRISON, Program Manager  
ESTHER FRICKE GREENE, Organist  
GLADWYN N. NICHOLS, Musical Director & Announcer  
P. S. LUCAS, Technician in Charge  
"Four Square Gospel"

### DAILY EXCEPT SUNDAY AND MONDAY—

10:30 to 11:30 a. m.—Sunshine Hour.  
11:30 a. m. to 12:30 p. m.—Noonday Musical.  
6:30 to 7:30 p. m.—Angelus Hour.

### DAILY EXCEPT SUNDAY, MONDAY, WEDNESDAY, SATURDAY—

2:30 to 3:30 p. m.—Gray Studio Program.

#### SUNDAY, MARCH 13—

10:30 to 12:30 p. m.—Sunday morning worship, Evangelist A. G. Garr.  
2:30 to 4:30 p. m.—Afternoon Dispensational service by A. G. Garr.  
6:30 to 8:00 p. m.—Musical Hour. Angelus Temple Band and Choir.  
8:00 to 9:00 p. m.—Revival service by A. G. Garr.  
10:00 to 11:00 p. m.—Organ recital by Esther Fricke Greene.

#### TUESDAY, MARCH 15—

3:30 to 4:30 p. m.—Vesper Hour. Organ recital by B. Earnest Ballard.  
7:30 to 9:30 p. m.—Evangelistic service by student evangelists.

#### WEDNESDAY, MARCH 16—

2:30 to 5:30 p. m.—Divine Healing Service by A. G. Garr.  
7:30 to 9:30 p. m.—Regular mid-week prayer service by A. G. Garr.

#### THURSDAY, MARCH 17—

3:30 to 4:30 p. m.—Vesper Hour. Organ recital by B. Earnest Ballard.  
7:30 to 9:30 p. m.—Regular Water Baptismal service. A. G. Garr.

9:15 to 10:00 p. m.—Gray Studio Program.  
10:00 to 11:00 p. m.—Organ recital by Esther Fricke Greene.

#### FRIDAY, MARCH 18—

3:30 to 4:30 p. m.—Vesper Hour. Organ recital by Esther Fricke Greene.  
7:30 to 9:30 p. m.—Crusader Rally. Sermon by A. G. Garr.  
10:00 to 11:00 p. m.—Back Home Hour.

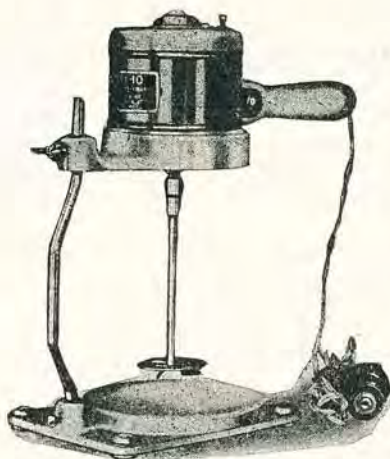
#### SATURDAY, MARCH 19—

3:30 to 4:30 p. m.—The Children's Happy Hour.  
7:30 to 9:30 p. m.—Divine Healing Service, conducted by A. G. Garr.

Program Published as Submitted by the Station.

# Eskimo Kitchen Mechanic

110  
Volts



List  
Price  
**\$8.00**

A new and useful device for the housewife. Ideal for mixing drinks, mayonnaise and dressings, whipping cream, beating eggs, and performs many other operations formerly done by hand.

Finished in gray and white enamel, nickle trimings. It is attractive as well as useful. Complete with adjustable stand and seven feet of cord, toggle switch and two-piece plug.

A good buy at low cost. Something every housewife will want. **BUY NOW.**

## Announcing

Type D-01A, the new De Forest 5-volt general purpose tube, price \$1.65. The lowest priced standard radio tube on the market. Also distributor for the De Forest Specialty Tubes.

# Cook-Nichols Co.

411 South San Pedro Street

LOS ANGELES

FAber 4487—TUcker 6657

WHOLESALE ELECTRIC AND RADIO SUPPLIES

482 S. Fair Oaks St.

PASADENA

Fair Oaks 1578



Dave Ward

9:00 p. m.—Dave Ward and his Yellow Jackets;

**MONDAY, MARCH 14—**

7:00 p. m.—Questions and answers by L. E. Taft, technician.  
7:30 p. m.—Joe Kalih's Trio and Kathrine Williamson.  
8:00 p. m.—Semi-classical hour conducted by Myra Belle Vickers.  
9:00 p. m.—Dave Ward and his Yellow Jackets: L. A. Railway Quartet;

**TUESDAY, MARCH 15—**

7:00 p. m.—Marion Boogar, Warren Peterson and Bud Overbeck.  
7:30 p. m.—Wilshire Ionaco Lecture.  
8:00 p. m.—Rebroadcast of eastern station.  
9:00 p. m.—Police and Fire joint program, Officer Robt. F. Tracy.

**WEDNESDAY, MARCH 16—**

7:00 p. m.—Concert Orchestra, Ed Pose and Helen Boyd,  
8:00 p. m.—Redel's Orchestra and Art Goodsteing.  
9:00 p. m.—Dave Ward and his Yellow Jackets, Helen McColl, Honeywell Twins

**THURSDAY, MARCH 17—**

7:00 p. m.—Questions and answers, by L. E. Taft, technician.  
7:30 p. m.—Hoot Gibson's Hawaiian Trio and Ruth Raynor.  
8:00 p. m.—LeRoy Parry's Elite Orchestra, Ned Miller, Eddie and Franky.  
9:00 p. m.—L. A. Railway Orchestra, Sol and Joyce Gregory, Helen Simpson

**FRIDAY, MARCH 18—**

7:00 p. m.—Hale Hooper, Jack Wilson and his Uke.  
7:30 p. m.—Wilshire Ionaco Lecture.  
8:00 p. m.—Paramount Orchestra, Dot Jordan and Glenda Boston.  
9:00 p. m.—Dave Ward and his Yellow Jackets, Pat Lee and Helen McColl.

**SATURDAY, MARCH 19—**

7:00 p. m.—Joey Starr's Orchestra and Dick Powers.  
8:00 p. m.—California Melody Kings, Helen Simpson and Esther Ware.  
9:00 p. m.—Dave Ward and his Yellow Jackets, Joe Lee and Bud Riley.  
Signing off at 11:00 p. m.

*Program Published as Submitted by the Station*

**Hollywood, California—226 Meters**

**KFQZ**

1641 North Argyle Ave., Hollywood, California  
Gladstone 3197; Gladstone 3198  
DAVE WARD, Program Director and Announcer  
L. E. TAFT, Technical Engineer  
"The Palace Bungalow Studio"

**DAILY EXCEPT SUNDAY—**

12:00 to 1:00 p. m.—Los Angeles Merchants' and Manufacturers' Hour.  
6:00 to 7:00 p. m.—Musical Hour.

**WEEK COMMENCING SUNDAY, MARCH 13, 1927**

**SUNDAY, MARCH 13—**

8:00 p. m.—Greenwich Village Orchestra; Babette Barker, soloist.

9:00 p. m.—Dave Ward and his Yellow Jackets;

7:00 p. m.—Questions and answers by L. E. Taft, technician.

7:30 p. m.—Joe Kalih's Trio and Kathrine Williamson.

8:00 p. m.—Semi-classical hour conducted by Myra Belle Vickers.

9:00 p. m.—Dave Ward and his Yellow Jackets: L. A. Railway Quartet;

7:00 p. m.—Marion Boogar, Warren Peterson and Bud Overbeck.

7:30 p. m.—Wilshire Ionaco Lecture.

8:00 p. m.—Rebroadcast of eastern station.

9:00 p. m.—Police and Fire joint program, Officer Robt. F. Tracy.

7:00 p. m.—Concert Orchestra, Ed Pose and Helen Boyd,

8:00 p. m.—Redel's Orchestra and Art Goodsteing.

9:00 p. m.—Dave Ward and his Yellow Jackets, Helen McColl, Honeywell Twins

7:00 p. m.—Questions and answers, by L. E. Taft, technician.

7:30 p. m.—Hoot Gibson's Hawaiian Trio and Ruth Raynor.

8:00 p. m.—LeRoy Parry's Elite Orchestra, Ned Miller, Eddie and Franky.

9:00 p. m.—L. A. Railway Orchestra, Sol and Joyce Gregory, Helen Simpson

7:00 p. m.—Hale Hooper, Jack Wilson and his Uke.

7:30 p. m.—Wilshire Ionaco Lecture.

8:00 p. m.—Paramount Orchestra, Dot Jordan and Glenda Boston.

9:00 p. m.—Dave Ward and his Yellow Jackets, Pat Lee and Helen McColl.

7:00 p. m.—Joey Starr's Orchestra and Dick Powers.

8:00 p. m.—California Melody Kings, Helen Simpson and Esther Ware.

9:00 p. m.—Dave Ward and his Yellow Jackets, Joe Lee and Bud Riley.

Signing off at 11:00 p. m.

*Program Published as Submitted by the Station*

*Program Published as Submitted by the Station*

*Program Published as Submitted by the Station*

*Program Published as Submitted by the Station*

*Program Published as Submitted by the Station*

*Program Published as Submitted by the Station*

*Program Published as Submitted by the Station*

*Program Published as Submitted by the Station*

*Program Published as Submitted by the Station*

*Program Published as Submitted by the Station*

*Program Published as Submitted by the Station*

*Program Published as Submitted by the Station*

*Program Published as Submitted by the Station*

*Program Published as Submitted by the Station*

*Program Published as Submitted by the Station*

*Program Published as Submitted by the Station*

*Program Published as Submitted by the Station*

*Program Published as Submitted by the Station*

*Program Published as Submitted by the Station*

*Program Published as Submitted by the Station*

*Program Published as Submitted by the Station*

*Program Published as Submitted by the Station*

*Program Published as Submitted by the Station*

*Program Published as Submitted by the Station*

*Program Published as Submitted by the Station*

*Program Published as Submitted by the Station*

*Program Published as Submitted by the Station*

*Program Published as Submitted by the Station*

*Program Published as Submitted by the Station*

*Program Published as Submitted by the Station*

*Program Published as Submitted by the Station*

*Program Published as Submitted by the Station*

*Program Published as Submitted by the Station*

*Program Published as Submitted by the Station*

*Program Published as Submitted by the Station*

*Program Published as Submitted by the Station*

*Program Published as Submitted by the Station*

*Program Published as Submitted by the Station*

*Program Published as Submitted by the Station*

**Los Angeles, Calif.—517 Meters**

**KGEF**

1000 WATTS—580 KILOCYCLES  
TRINITY METHODIST CHURCH  
BOB SHULER, Pastor  
Phone BRoadway 1000  
C. C. HOOPER, Manager  
M. J. HANKINS, Technician

**SUNDAYS—**

10:50 a. m. to 12:15 p. m.—Morning services.  
5:00 to 6:00 p. m.—Vesper hour.  
7:15 to 9:00 p. m.—Evening services.  
9:00 to 10:00 p. m.—Old Hymns Songfest.  
10:00 p. m.—Family Altar service.

**WEDNESDAYS—**

6:00 to 7:00 p. m.—Children's hour.  
7:00 to 7:45 p. m.—Conrey's Bible Class.  
7:45 to 8:30 p. m.—Studio musical program.  
8:30 to 9:15 p. m.—Question Hour.

**FRIDAYS—**

7:00 to 7:30 p. m.—Radio Bible Class.  
7:30 to 8:00 p. m.—Studio musical program.  
8:00 to 8:30 p. m.—Civic half hour.  
8:30 to 9:30 p. m.—Southern California Holiness Association.

*Program published as submitted by the station*



E. C. Huchabee  
Announcer



*This Sign Marks the  
Leading Dealer In  
Community*

# RADIOLA 20

Challenging the Tone Quality  
and Performance of its Bigger  
and Higher Priced Competitors!  
Twenty Times as Selective as the  
Average Set. One of the Finest  
Values in Radio Today!

*For Demonstration Phone TRinity 0746*

---

Eastman Kodak Stores, Inc.

510 South Broadway

Los Angeles, Calif.



GEORGE FRENGER  
Announcer

## Pasadena, California—315.6 Meters

# KPSN

PASADENA STAR-NEWS  
1000 WATTS—950 KILOCYCLES  
GEORGE CECIL COWING, Managing Director  
GEORGE FRENGER, Program Manager  
HERSHEL SATTERFIELD, Engineer-in-Charge  
PERCY C. PRYOR, Studio Office  
Phone, Wakefield 2111

### DAILY EXCEPT SUNDAY—

12:00 to 12:15 p. m.—News Bulletin.

6:00 to 7:00 p. m.—Dinner-time news report.

WEEK COMMENCING SUNDAY, MARCH 13, 1927

#### SUNDAY, MARCH 13—

10:30 a. m.—Family Altar Service by the United Church Brotherhoods.

11:00 a. m.—Services from the Pasadena Presbyterian Church.

6:00 to 7:00 p. m.—Star-News concert, with Adolf Tandler and the Ensemble.

#### MONDAY, MARCH 14—

8:00 to 9:15 p. m.—Star-News concert, with Adolf Tandler and the Ensemble.

#### TUESDAY, MARCH 15—

8:00 to 9:15 p. m.—Star-News concert, with Adolf Tandler and the Ensemble.

#### THURSDAY, MARCH 17—

8:00 to 9:15 p. m.—Star-News concert, with Adolf Tandler and the Ensemble.

#### FRIDAY, MARCH 18—

8:00 to 9:15 p. m.—Star-News concert, with Adolf Tandler and the Ensemble.

#### SATURDAY, MARCH 19—

8:00 to 9:15 p. m.—Star-News concert, with Adolf Tandler and the Ensemble.

Program Published as Submitted by the Station.

## \$1 Down—

Will Place a

## Majestic "B"

Current Supply in Your Home  
then \$1 a week

## \$5 Down—

Will Place a

## Philco "A and B"

Current Supply in Your Home  
then \$6 a month

NEED A CHARGER?

## \$30 ELECTRON <sup>6 AMP. TUBE</sup> CHARGERS \$17.90

Westinghouse Rectigon Charger, \$14.90

Harsha Trickle Chargers, \$7.50

Gold Seal Homechargers, \$14.90

Supply Limited—Secure Yours Now

### \$7.75 6 V. 100 A.H. STORAGE BATTERIES, 2 yr. guar. \$7.75

45 Volt Large "B" Batteries...\$1.95 45 Volt. Heavy Duty "B"....\$2.95

\$4 Brandes Transformers....\$1.95 Browning Drake Coils.....\$1.95

\$10 Brandes Units.....\$4.95

ESTAB. 1904

625 So. Main  
Opposite  
P. E. Depot

# J. C. RENDLER

TRinity 4281  
Los Angeles

OPEN EVENINGS

"KIT HEADQUARTERS"

MAIL ORDERS



*Know  
Filament  
and "B"  
Battery  
Voltages*

**"CONVERTIBLE"  
PIN-JACK  
VOLTMETER**

*Plugs Into Your*  
**BRUNSWICK-BALKE  
STANDARDYNE  
RADIOLA  
VICTOR  
BOSCH**

Saves your tubes. Other sets easily adapted with 'pin-jacks' furnished with each instrument. Remove voltmeter, plug it into its Stand and you have a high range instrument for battery testing and locating circuit troubles.

Ask your dealer to show you.  
Only \$10.00

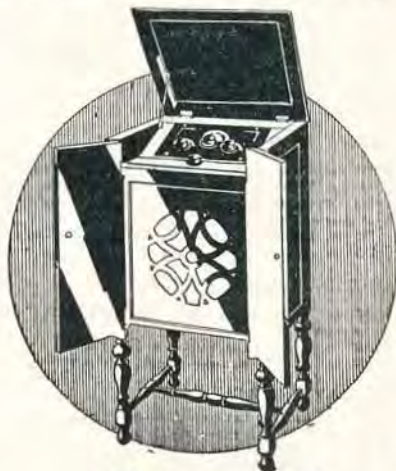
*Your Dealer has WESTON  
Instruments or will get them  
promptly from his Radio Jobber*

**WESTON ELECTRICAL  
INSTRUMENT CORPORATION**  
Weston Avenue Newark, N. J.

STANDARD THE WORLD OVER  
**WESTON**  
*Pioneers since 1888*

# The Falck

NO-BATTERY  
**RADIO**



**Now!**  
with enclosed  
**CONE SPEAKER**

You can now obtain the Falck equipped with a genuine Rola Cone Speaker or with the original Falck Unit. . . . In either case you are assured of the ultimate in tonal reproduction.

**\$150**

*Slight Extra Charge for Cone*



JACK DUCKWORTH  
Announcer

## Inglewood, California—387 Meters

# KMIC

500 WATTS—775 KILOCYCLES

Owned and Operated by JAMES R. FOUCH  
Chamber of Commerce Building, Inglewood, Cal.  
JACK DUCKWORTH, Announcer

DAILY EXCEPT SUNDAY—

6:00 to 6:30 p. m.—Shoppings news, with Victor Electrola Review

WEEK COMMENCING SUNDAY, MARCH 13, 1927

SUNDAY, MARCH 13—

11:00 a. m. to 12:15 p. m.—Centinella Baptist Church.

MONDAY, MARCH 14—

6:30 to 7:00 p. m.—Martin Wallace Orchestra, request program.

7:00 to 8:00 p. m.—Lambert Stiles Company program.

8:00 to 9:00 p. m.—City of Inglewood courtesy program.

9:00 to 9:30 p. m.—Geo. M. Sutton courtesy program; KMIC Trio; Louise White, soprano; Nell Larson, piano; Don Minor, tenor.

9:30 to 10:00 p. m.—Studio program.

TUESDAY, MARCH 15—

6:30 to 6:45 p. m.—Health Chat—Care of the Body.

6:45 to 7:00 p. m.—Skinner Mfg. Co. courtesy program.

7:00 to 7:30 p. m.—Studio program, with Helen McColl, blues; Ethyl Smith, uke; Carol Agnew, piano.

7:30 to 8:00 p. m.—Reliable Radio Sales & Service Company courtesy program.

8:00 to 10:00 p. m.—Wes. Woodford and his Bachelor Four, request program.

WEDNESDAY, MARCH 16—

6:30 to 7:30 p. m.—Martin Wallace Orchestra; Erna Cook, blues; Geraldine Gordon, baritone.

7:30 to 8:00 p. m.—Ross O. Porter Tire Company courtesy program

8:00 to 10:00 p. m.—L. A. Ry. String Quartet.

THURSDAY, MARCH 17—

6:30 to 7:00 p. m.—Gordon Garrett, classic pianist.

7:00 to 7:30 p. m.—Malloy Clint courtesy program.

7:30 to 8:00 p. m.—Inglewood Furniture Company courtesy program.

8:00 to 10:00 p. m.—Wes. Woodford and his Bachelor Four; Evie and Peggy, harmony numbers; Fred Wesley, blues; Don Minor, tenor; Bill Henry, blues.

FRIDAY, MARCH 18—

6:30 to 7:30 p. m.—Studio program.

7:30 to 8:00 p. m.—Skinner Mfg. Co. courtesy program.

8:00 to 10:00 p. m.—Studio program with Ehermoan Hunter, tenor; Louise White, soprano; Lempke's Radio Boys and others.

10:00 to 12:00 midnight—American Legion Frolic.

SATURDAY, MARCH 19—

6:30 to 7:00 p. m.—Gordon Garrett, classic pianist.

7:00 to 8:00 p. m.—Martin Wallace Orchestra.

8:00 to 10:00 p. m.—Bill Livingston and his Radio Boys; Evie and Peggy, harmony; Don Minor, tenor; Neva Negis, whistler.

Program Published as Submitted by the Station.



## COMPLETE RCA LINE ON DISPLAY

For Radio Service on All Makes

Call TRinity 2914



24  
Years In  
Business

### NEWBERY ELECTRIC CORP.

726 South Olive St.

Los Angeles, Cal.



For Sets, Accessories and  
SERVICE



on

# RCA-Radiola

MADE BY THE MAKERS OF RADIOTRONS

You Can Depend Upon These Authorized RCA Dealers:

## LOS ANGELES

### Beverly Hills

CRAWFORD'S RADIO-MUSIC  
445 Beverly Drive  
OXford 6801

### Hollywood

CRAIG RADIO SERVICE  
7022 Melrose Ave.  
WHitney 7312  
HETZEL COMPANY  
7915 Santa Monica Blvd.  
GRanite 5874  
HOLLYWOOD MUSIC Co.  
6019 Hollywood Blvd.  
HOLLYWOOD 0364

### Lincoln Heights

FRANK GRAVES SASH, DOOR  
& MILL CO., HDW. DEPT.  
2012 Pasadena Ave.  
CApitol 2071

### Southwest

BOULEVARD FURNITURE Co.  
1574 W. Washington, at  
Vermont  
BEacon 0722  
C & G ELECTRIC & RADIO  
Co.  
1501 W. Santa Barbara,  
at Dalton  
VERmont 5205

FLETCHER RADIO MUSIC Co.  
4705 S. Vermont Ave.  
VERmont 9589

L. A. DUNCAN  
2891 W. Pico St.  
EMpire 1141

### Highland Park

HOLLAND ELECTRIC SHOP  
5632 Pasadena Ave.  
GARfield 3912

### Hollenbeck Heights

PHONOGRAPH REPAIR SHOP  
(N. E. Worobieff)  
1826 E. First St.  
ANGelus 6349

### Southeast

CENTRAL ELECTRIC Co.  
3802 Central Ave.  
HUMBolt 2337

### Wilshire

WOLFE RADIO Co.  
543 S. Western  
WASHington 5711

### Downtown

THE ELECTRICAL APPLI-  
ANCE SHOP  
336 S. Broadway  
TUcker 2932

HARRY W. HARRISON  
848 S. Flower St.  
TRinity 9777

MARTIN MUSIC Co.  
734 S. Hill St.  
TRinity 9621

## ALHAMBRA

FRED B. GILLENWATER  
RADIO STUDIO  
127 W. Main St.  
ALhambra 2032

## BELL

BAKER AVE. ELECTRIC Co.  
910 Baker Ave.  
DELaware 1871

## EAGLE ROCK

EAGLE ROCK MUSIC Co.  
2144 Colorado Blvd.  
ALbany 4315

## GLENDALE

GLENDALE MUSIC Co.  
(Salmacia Bros.)  
118 S. Brand Blvd.  
Glendale 90

J. A. NEWTON ELECTRIC  
Co.  
154 S. Brand Blvd.  
Glendale 240

"Buy With  
Confidence



Where You See  
This Sign"





**TOM MITCHELL**  
Announcer

## Santa Monica, California — 238 Meters

# KNRC

1000 WATTS CAPACITY  
Owned and Operated by KEIRULFF & RAVENS-  
CROFT COMPANY.  
Municipal Auditorium, Ocean Park, Santa Monica,  
Calif. Phone Santa Monica 63-101.  
TOM MITCHELL, Studio Manager and Announcer.  
C. B. JUNEAU, Transmission Engineer.  
*"The Station with a Smile"*

### DAILY EXCEPT SUNDAY—

6:00 to 7:00 p. m.—Club Casa Del Mar organ recital. Remote control.

7:00 p. m.—Merchants Review.

10:00 to 11:00 p. m.—Club Casa Del Mar Orchestra. Remote control.

11:00 to 12:00 p. m.—La Monica Ball Room Orchestra.

### DAILY EXCEPT MONDAY—

8:00 to 9:00 p. m.—Band Concert.

11:30 p. m.—Band Concert.

WEEK COMMENCING SUNDAY, MARCH 13, 1927

### SUNDAY, MARCH 13—

10:45 to 11:45 a. m.—Pilgrim Lutheran Church services, remote control.

6:15 to 7:00 p. m.—Pilgrim Lutheran Church services, remote control.

7:00 to 8:00 p. m.—Club Casa Del Mar, remote control, organ concert by Julius K.

Johnson.  
9:00 to 10:00 p. m.—Club Casa Del Mar, remote control, Julius K. Johnson, organist, and  
Club Casa Del Mar Orchestra.

10:00 to 11:00 p. m.—La Monica Ballroom Orchestra, remote control.

### MONDAY, MARCH 14—

2:00 to 2:30 p. m.—Shopping Tour conducted by Margaret Macdonald Shontz.

4:00 to 4:45 p. m.—Smiling Circle with Brother Tom.

8:00 to 10:00 p. m.—Main studio program, featuring the Black and Tan Orchestra, Al  
Flannigan, tenor.

### TUESDAY, MARCH 15—

1:30 to 2:30 p. m.—Art Mace and his Rendezvous Ballroom Orchestra.

4:00 to 4:45 p. m.—Smiling Circle with Brother Tom.

9:00 to 10:00 p. m.—Main studio program, featuring the California Dons Orchestra, Mar-  
jorie Bechtel, soprano, and Albert Broad, tenor, accompanied by Irma Reed.

### WEDNESDAY, MARCH 16—

2:00 to 2:30 p. m.—Shopping Tour conducted by Margaret Macdonald Shontz.

4:00 to 4:45 p. m.—Smiling Circle with Brother Tom.

9:00 to 9:30 p. m.—Club Casa Del Mar, remote control.

9:30 to 10:30 p. m.—Broadcasting of the Fights, from Ocean Park Arena, through the  
courtesy of the Ocean Park Athletic Club.

### THURSDAY, MARCH 17—

4:00 to 4:45 p. m.—Smiling Circle with Brother Tom.

9:00 to 10:00 p. m.—Main studio program, featuring John David Beall and his assisting  
artists.

### FRIDAY, MARCH 18—

2:00 to 2:30 p. m.—Shopping Tour, conducted by Margaret Macdonald Shontz.

4:00 to 4:45 p. m.—Smiling Circle with Brother Tom.

9:00 to 10:00 p. m.—Main studio program, featuring Los Angeles Railway Orchestra.

### SATURDAY, MARCH 19—

4:00 to 4:45 p. m.—Smiling Circle with Brother Tom.

9:00 to 10:00 p. m.—Main studio program, featuring Virginia Depp and Betty Daud, nov-  
elty singers; Kathleen Williamson, blues singer, accompanied by Eleanor Swall and  
fourteen strings of harmony, by Eddie Mills.

12:00 to 1:00 a. m.—La Monica Ballroom Orchestra, remote control.

*Program Published as Submitted by the Station.*

## STANDARD RADIO CO.

417 West Pico Street, Los Angeles, Calif.

## FADA, ATWATER KENT AND WESTERN ELECTRIC DEALER

We Carry a Complete Line

Open Model Atwater Kent Wave Length Cut Down to 200 Meters.  
We Are Also Making a Specialty of Sharpening Tuning in Any Radio Set  
2-Tube Harkness Changed to 3-Tube, Guaranteed Perfect Tune-Out on  
Local Stations

Telephone WESTmore 1560

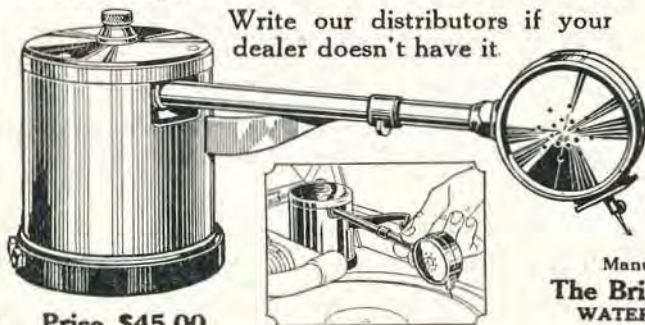
Open Evenings Until 9 o'Clock

# Bristophon

## ELECTRIC POWER AMPLIFIER

Electrifies the ordinary phonograph and gives it the tone range, sweetness and volume of the new "phonic" instruments. Operates in three ways: (1) with radio Power Speaker, (2) with radio Power Amplifier, (3) with radio Speaker only.

Write our distributors if your dealer doesn't have it



Price \$45.00

*Pacific Coast Distributors:*

- SAN FRANCISCO:**  
Pacific States Elec. Co.  
575 Mission St.  
Leo. J. Mayberg Co.  
973 Mission St.
- LOS ANGELES:**  
Pacific States Elec. Co.  
230 S. Los Angeles St.  
Leo. J. Mayberg Co.  
1022 S. Wall St.
- SPOKANE:**  
Pacific States Elec. Co.  
122 S. Lincoln St.
- OAKLAND:**  
Leo. J. Mayberg Co.  
921 Hawson St.
- SEATTLE:**  
Pacific States Elec. Co.  
870 First Ave., So.
- PORTLAND:**  
Pacific States Elec. Co.

Manufactured by  
**The Bristol Company**  
WATERBURY, CONN.

## Distance and Selectivity ON YOUR SUPER-HETERODYNE

You Get Both With a

### RADIO POWER BOX

Results Guaranteed

Use this Radio Power Box one week on your Radiola Semi-portable, 24, 26 and 28, and other types of super-heterodynes, then if you are not satisfied, return box and the purchase price will be refunded.

**SOLD DIRECT TO SET OWNERS  
ONLY**

Immediate Attention Given Mail Orders

**THE SANTEE CO.**

216 Calo Building  
443 S. San Pedro St.



**MODEL No. 24**

This model built for Radiola and other types of Super-Heterodynes.

**Now \$6.00**

Telephone TUcker 4951  
Los Angeles, Calif.



**BOB BEDDOME**  
Announcer

## Venice, California—208 Meters

1440 KILOCYCLES—500 WATTS

# KFVD

McWHINNIE ELECTRIC CO., VENICE BALLROOM  
Venice, Cal. Phone 65959  
BOB BEDDOME, Manager

### DAILY EXCEPT SUNDAY—

9:00 to 11:00 a. m.—Music and shopping news.  
11:00 to 11:30 a. m.—Mary Elizabeth Garden,  
5:30 to 7:00 p. m.—Music and shopping guide.  
10:00 to 12:00 p. m.—Cush Branch and orchestra Venice ballroom.

### WEEK COMMENCING SUNDAY, MARCH 13, 1927

#### SUNDAY, MARCH 13—

6:00 p. m.—Cush Branch and orchestra from Venice Ballroom.

#### MONDAY, MARCH 14—

8:00 to 9:00 p. m.—Hal Denny and De Luxe Orchestra; Bud Russell and uke.  
9:00 to 10:00 p. m.—Clyde Pearson, soprano; Fred Wesley, Al Conklin, piano; Theo. Schaeffer, tenor.  
12:00 midnight to 2:00 a. m.—Midnight Frolic from Tomray Jacob's Ship Cafe.

#### TUESDAY, MARCH 15—

8:00 to 9:00 p. m.—Ansley Graham, tenor; Lallah Fulton, concert pianist; Dale Fulton, violinist.  
9:00 to 10:00 p. m.—Roy Davis, whistler; Geraldine Barnett, soprano; Billy McCabe, tenor; Eugene Raymond, baritone.

#### WEDNESDAY, MARCH 16—

12:15 p. m.—Lions Club of Venice.  
4:00 to 5:00 p. m.—Children's Hour, conducted by Ursula March Largey.  
8:00 to 9:00 p. m.—Studio program.  
9:00 to 10:00 p. m.—Lyman Weed, baritone; Nina Frey, soprano; Harry Von Zell, baritone; Geo. Thiroux.

#### THURSDAY, MARCH 17—

7:30 to 8:30 p. m.—Basketball.  
8:30 to 9:00 p. m.—Bob Davies, Welch baritone; Sally J. Shull, pianist.  
9:00 to 10:00 p. m.—Ensemble Conservatory of Music.

#### FRIDAY, MARCH 18—

4:00 to 5:00 p. m.—Children's Hour.  
8:00 to 9:00 p. m.—Marbelite Corp. of America courtesy program.  
9:00 to 10:00 p. m.—L. A. Railway Hawaiian Quartet and vocal soloists.

#### SATURDAY, MARCH 19—

1:00 to 2:00 p. m.—Harry Judson, Addie Carlson, Walter Lyon, Al Conklin and others.  
*Program Published as Submitted by the Station.*



**Major Lawrence Mott**  
Announcer

## Avalon, California—211.1 Meters

# KFWO

THE ISLAND STATION  
Power 250 Watts—Western Electric Equipment  
"Katalina for Wonderful Outings"  
MAJOR LAWRENCE MOTT, Owner-Operator  
MISS FRANCES HEWITT, Studio & Program Dir.  
"The Islo With a Smile"

### WINTER SCHEDULES AT KFWO

The Mott Station at Catalina Island, California  
(In Effect Week of Sept. 20th)

### DAILY EXCEPT MONDAY—

12:30 to 1:30—Hotel St. Catherine Orchestra.  
6:30 to 8:00—St. Catherine Orchestra.

### DAILY EXCEPT MONDAY, THURSDAY AND SUNDAY—

6:00 to 6:30—Studio.

#### MONDAYS: Silent.

TUESDAYS: 5:00 to 6:00—Miss Hewitt's Golden Hour.  
6:00 to 8:00—Studio.

WEDNESDAYS: 8:00 to 9:00—Studio Program.  
9:00 to 12:00 Midnight—Overseas.

THURSDAYS: 8:00 to 9:00—Studio Program.  
FRIDAYS: 5:00 to 6:00—Miss Hewitt's Golden Hour.  
6:00 to 6:30—Wrigley Chimes.

SATURDAYS: 3:00 to 4:30—Rebroadcast of KNX.  
9:15 to 10:00—Studio.

SUNDAYS: 5:00 to 6:00—Miss Hewitt's Golden Hour.  
6:00 to 6:30—Wrigley Chimes.  
8:00 to 9:15—Lobby Concert.

*Victor Electrola used during all programs.*

*Program Published as Submitted by the Station.*

# OUR EXCEPTIONAL OFFER

*Get Two Great Magazines For Almost  
the Price of One!*

## SAVE \$2.00

**RADIO NEWS**—The National Radio Monthly  
with the largest circulation and following of  
any Radio publication in the world—

or  
**SCIENCE AND INVENTION**

or  
**AMAZING STORIES**

*Regular Price \$2.50*

and

**RADIO DOINGS**—The Leading Pacific Coast  
Radio Weekly — the Radio authority of the  
Pacific Coast—

*Regular Price \$3.00*

These leaders in their respective fields—the great National  
Monthly, Radio and Scientific Magazines and the great  
Pacific Coast Weekly—

### BOTH NOW FOR \$3.50

*You Can't Afford to Pass This Offer By*

Attach Money Order, Check or Currency to the Coupon and Mail to Us  
Right Now

RADIO DOINGS,  
407 E. Pico Street,  
Los Angeles, Calif.

Or Conger & Moody,  
Sharon Bldg., San Francisco, Calif.

Send me RADIO DOINGS and "RADIO NEWS," SCIENCE &  
INVENTION or AMAZING STORIES for one year. I enclose \$3.50.

Name.....

Address.....

City and State.....

(Specify NEW or RENEWAL)

R-1



"HAL" G. NICHOLS  
Announcer

## Long Beach, California—233 Meters

# KFON

1290 KILOCYCLES—750 WATTS  
NICHOLS & WARINNER, INC.  
Studio 211 Jergins Trust Bldg. Phones 617-19, 614-60  
Business Office, 212 Jergins Trust Bldg.  
Phones: 617-19, 614-60  
"Where Your Ship Comes In"

### DAILY EXCEPT SUNDAY—

10:15 to 10:30 a. m.—"Devotion Period."  
10:30 to 11:30 a. m.—Physiology of Beauty, Georgia O. Gearge.  
11:30 a. m. to 12:00 noon—Press-Telegram news.  
12:00 noon—Lost and found announcements.  
4:00 to 4:30 p. m.—Press-Telegram Late News.  
4:30 to 6:00 p. m.—KFON Concert Orchestra.  
6:00 to 6:15 p. m.—Request program.  
6:15 to 7:00 p. m.—KFON Concert Orchestra.

### DAILY EXCEPT MONDAY—

2:30 to 4:00 p. m.—Municipal Band Concert.

### DAILY EXCEPT SUNDAY AND MONDAY—

7:30 to 9:00 p. m.—Municipal Band and studio programs.

### WEEK COMMENCING SUNDAY, MARCH 13, 1927

#### SUNDAY, MARCH 13—

11:00 a. m. to 12:30 p. m.—Church of the Nazarene.  
1:30 to 2:30 p. m.—Musical program presented by Wm. Conrad Mills.  
4:00 to 5:00 p. m.—Vesper Hour.  
5:00 to 6:00 p. m.—KFON Concert Orchestra, sponsored by Long Beach Business Men.  
6:15 to 7:00 p. m.—KFON Concert Orchestra.  
7:00 to 7:45 p. m.—Fountain Club Cafe Orchestra.  
7:45 to 9:00 p. m.—Services from First Church of Christ, Scientist, by remote control.  
9:00 to 12:00 midnight—"Everybody's Night"—amateurs and professionals.

#### MONDAY, MARCH 14—

12:00 to 12:30 p. m.—Mae Day Beauty Salon; musical program.  
12:30 to 1:00 p. m.—American Markets. Program.  
1:00 to 1:30 p. m.—Wilshire Ionaco Co. program, featuring Clarence and Doris.  
7:00 to 8:00 p. m.—Thrifty Sandy program, sponsored by Citizens State Bank.  
8:15 to 9:00 p. m.—"The Haymakers," featuring old-time dance music.  
9:00 to 12:00 midnight—"Kiwaniis Frolic."

#### TUESDAY, MARCH 15—

12:00 to 12:30 p. m.—Kay & Burbank Co. musical program.  
1:00 to 1:30 p. m.—Kiwaniis Club luncheon.  
1:30 to 2:30 p. m.—Woman's Music Study Club, direction Ruth Parkinson.  
7:00 to 7:30 p. m.—Novelty program.  
7:30 to 8:00 p. m.—"Chat for Booklovers," presented by Hewitt's Bookstore.  
9:00 to 10:00 p. m.—Piggly Wiggly Girls.  
10:00 to 11:00 p. m.—Majestic Ballroom Orchestra, by remote control.  
11:00 to 12:00 p. m.—Capitol Theatre organ recital, by remote control.

#### WEDNESDAY, MARCH 16—

12:00 to 12:30 p. m.—Mae Day Beauty Salon musical program.  
12:30 to 1:00 p. m.—American Markets sponsoring musical program.  
1:00 to 1:30 p. m.—Rotary Club luncheon.  
1:30 to 2:00 p. m.—Wilshire Ionoca Co. program, featuring Clarence and Doris.  
2:00 to 2:30 p. m.—Department of Numerology.  
7:00 to 7:30 p. m.—Studio program.  
10:00 to 11:00 p. m.—Pacific Coast Club Orchestra, by remote control.  
11:00 to 12:00 p. m.—Capitol Theatre organ recital, by remote control.

#### THURSDAY, MARCH 17—

12:00 to 12:30 p. m.—Kay & Burbank Co., musical program.  
7:00 to 8:00 p. m.—Studio program.  
9:00 to 10:00 p. m.—Shell Oil Company's Orchestra.  
10:00 to 11:00 p. m.—Majestic Ballroom Orchestra, by remote control.  
11:00 to 12:00 p. m.—Capitol Theatre organ recital, by remote control.

#### FRIDAY, MARCH 18—

12:00 to 12:30 p. m.—Eureka Bakery, musical program.  
12:30 to 1:00 p. m.—American Markets, sponsoring musical program.  
1:00 to 1:30 p. m.—Wilshire Ionoca Co., program featuring Clarence and Doris.  
1:30 to 2:00 p. m.—Mae Day Beauty Salon, musical program.  
2:00 to 2:30 p. m.—Department of Numerology.  
7:00 to 7:30 p. m.—Church of Christ, by Rev. Earnest Beam.  
7:30 to 7:45 p. m.—"A Seline Sizer program."  
7:45 to 8:00 p. m.—"Lucky Jim" Investment Chat, by Seaboard Bond & Mortgage Co.  
9:00 to 10:00 p. m.—Gaskill Manufacturing Co. and Missman Radio Company program.  
10:00 to 12:00 midnight—Elks' Frolic, Lodge No. 888.

#### SATURDAY, MARCH 19—

12:00 to 12:30 p. m.—Kay & Burbank Co. musical program.  
1:30 to 2:30 p. m.—Fountain Club Cafe Orchestra.  
7:00 to 8:00 p. m.—Pacific Coast Club Orchestra, by remote control.  
9:00 to 10:00 p. m.—The Minstrel Show.  
10:00 to 11:00 p. m.—Pacific Coast Club Orchestra, by remote control.  
11:00 to 12:00 midnight—Capitol Theatre organ recital, by remote control.

Program Published as Submitted by the Station.

# **YOUR NEIGHBORHOOD DEALER**

**ADVERTISING SERVICE**

**BOSCH AND BREMER TULLY**

**Mr. RADIO DEALER!**

**Here Is Your  
Space For Next  
Week — Our New  
1/6th Page, Designed  
For Your Needs**

**For Rates Phone  
TUcker 8468**

All Models

**COUNTERPHASE  
and  
BOSCH**

**H. A. Everest**  
1032 North Ogden Drive  
Nightly Demonstrations  
GRanite 9915

## TRANSTROM INTERMEDIATE TRANSFORMERS

Can Be Installed In

**ALL SUPER-HETERODYNES**

Increasing Their Selectivity, Sensitivity and Distance 100 per cent

Service and Accessories for Supers — Portable Cabinets Made to Order

**SIERRA RADIO LABORATORIES**

318 W. Fifth St.

Los Angeles, Calif.

VAndike 6464

## **PALMER RADIO LABORATORY**

Established 1923

*Specializing in*

**SUPER-HETERODYNES AND INFRADYNES**

Intermediate Transformers Made and Calibrated

Also all other types of receivers made to operate efficiently

*Satisfaction Guaranteed or No Charge*

Advice Free

Open Evenings Till 9 P. M.

Courtesy to All

4529 S. Vermont, Los Angeles. Phone VERmont 7883



**TOM SEXTON**  
Announcer

## San Diego, California—245.8 Meters

# KFSD

100 WATTS—1220 KILOCYCLES  
AIRFAN RADIO CORPORATION  
U. S. Grant Hotel, 326 Broadway, San Diego. Main 8661  
RAYMUND V. MORRIS, President  
TOM SEXTON, Announcer

"Kiss From San Diego"

DAILY EXCEPT SUNDAY—

6:00 to 7:00 p. m.—Nightly musical review.

10:00 to 11:00 p. m.—Harvey Ball and his U. S. Grant Hotel Orches

WEEK COMMENCING SUNDAY, MARCH 13, 1927

SUNDAY, MARCH 13—

3:00 to 4:00 p. m.—Temple service of the Theosophical University

MONDAY, MARCH 14—

7:00 to 8:00 p. m.—Studio hour.

8:00 to 9:00 p. m.—First Unitarian Church program. Howard B. Bard.

9:00 to 10:00 p. m.—Mixed musical program.

TUESDAY, MARCH 15—

7:00 to 8:00 p. m.—Studio hour.

8:00 to 9:00 p. m.—Union Title Company "Classic Hour" program.

9:00 to 10:00 p. m.—Mixed musical program.

WEDNESDAY, MARCH 16—

7:00 to 7:30 p. m.—Courtesy program by Wilshire's Ionaco Company.

7:30 to 8:30 p. m.—Concert program furnished by the Theosophical University

8:30 to 9:30 p. m.—C. C. Tatum, realtor, Bay Hills Orchestra.

9:30 to 10:00 p. m.—"Popular" Orthophonic program.

THURSDAY, MARCH 17—

7:00 to 8:00 p. m.—Police program, dance music and concert music.

8:00 to 9:00 p. m.—John P. Mills, Inc., Point Loma Orchestra.

FRIDAY, MARCH 18—

7:00 to 8:00 p. m.—Studio hour.

8:00 to 9:00 p. m.—P. M. Dairy Concert Orchestra. Instrumental Trio

9:00 to 10:00 p. m.—Mixed musical program.

SATURDAY, MARCH 19—

7:00 to 8:00 p. m.—San Diego Senior High School program.

8:00 to 9:00 p. m.—Mme. de Beauviere, "Franco-American" hour.

9:00 to 10:00 p. m.—"Classic" hour Orthophonic recital.

## 'B' BATTERY ELIMINATOR

Only \$4.75

### MONEY-BACK GUARANTEE

No more worry with "B" Batteries! Hook up a Roll-O "B" Battery Eliminator and forget battery troubles forever. This wonderful new invention means better reception, sharper tuning. Gives you more real pleasures from your set.

Completely Equipped—No "Extras" to Buy  
Operates perfectly on direct or alternating current, giving up to 90 volts current, and using the full wave of the power supply. Simple directions enclosed—anyone can plug it in to any kind of set

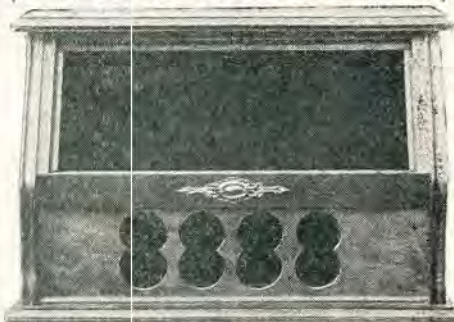
up to six tubes. Constant voltage gives set more power. Costs no more than set of good "B" Batteries. Solidly built in beautifully finished metal case, with genuine Bakelite top.

**SEND YOUR ORDER NOW**  
Don't blame your set because run down "B" Batteries won't let it work right. Order your Eliminator NOW. Write name and address on a piece of paper, pin a dollar bill to it, and mail it TODAY. Pay postman balance (\$3.75 plus a few cents postage) when he delivers your Eliminator. Use it ten days. If not more than satisfied, return it and get your money back.

**PERFECT ELIMINATOR CO.**

National Theatre Bldg., Cincinnati, Ohio

## A POPULAR MODEL BATAN MAHOGANY



Model, No. 1A

12 to 18 x 7 inch Panel  
10½ inches deep, with Horn

**Price \$11.65**

We have many other models to select from, or will make to your order.

Send for our Illustrated Catalogue.

**Goodwork Radio Cabinet Shop**

Open Evenings and Sundays  
6715 Avalon Blvd. Los Angeles

# 5 Tube Falck



*Beautiful  
Mahogany  
Console*

Plug in your light socket as you would your electric iron. No batteries, no acid, no muss, no fuss. Operates without aerial. One dial control. Something everybody wants, at a low cost. Cash credit for your old set.

**Phone VE. 9589**

**For Home  
Demonstration**

**EASY TIME PAYMENTS**

You Can Save Interest and Insurance by Cutting Out This Advertisement and Bringing it to 4705 South Vermont Avenue.

# FLETCHER

**RADIO MUSIC CO.**

**4705 S. Vermont Ave. VE. 9589  
Los Angeles**



## ELKON TRICKLE CHARGER

Keeps your "A" batteries charged to highest efficiency ALWAYS.

No attention on your part.

No acids, alkali, water, moving parts, tubes, or interference.

It insures you constant power constantly, tapering off or increasing as needed.

**SET IT—INSTALL IT  
—FORGET IT**

**\$14<sup>00</sup>**

*Complete with Switch*

*Wholesale Distributors*

**YALE RADIO  
ELECTRIC CO.**

**LOS ANGELES**

**1111 Wall Street Westmore 3351**





CURTIS PECK  
Announcer

## San Francisco, California—428.3 Meters

# KPO

1000 WATTS—700 KILOCYCLES  
HALE BROTHERS AND THE CHRONICLE  
ALBERT J. HODGES, Technical Director  
Phone Kearney 5777  
"The Voice of San Francisco"

### DAILY EXCEPT SUNDAY—

- 6:45, 7:15 and 7:45 a.m.—Daily health drill by Hugh Barrett Dobbs  
10:30 a.m.—"Ye Towne Crier."  
12:00 noon—Time signals and Scripture reading.  
1:00 to 2:00 p.m.—Rudy Seiger's Fairmont Hotel Orchestra  
3:30 to 5:30 p.m.—Palace Hotel Concert Orchestra.  
5:30 to 6:15 p.m.—Children's Hour.  
6:15 to 6:30 p.m.—"Ye Towne Crier."  
6:30 to 7:00 p.m.—States Restaurant Orchestra.  
7:00 to 7:30 p.m.—Rudy Seiger's Fairmont Hotel Orchestra  
7:30 to 8:00 p.m.—Silent.

### WEEK COMMENCING SUNDAY, MARCH 13, 1927

#### SUNDAY, MARCH 13—

- 9:45 to 10:45 a.m.—Undenominational and non-sectarian church service. Uda Waldrop at the organ.  
10:45 a.m.—"Ye Towne Crier," giving the United States weather forecast and general information.  
2:40 to 4:15 p.m.—Concert of the San Francisco Symphony Orchestra, Alfred Hertz, director, to be broadcast from the New Curran Theatre by KPO, KFI and KGO.  
6:00 to 6:30 p.m.—States Restaurant Orchestra, Waldemar Lind director.  
6:30 p.m.—"Ye Towne Crier," giving general information.  
6:35 to 8:35 p.m.—Palace Hotel Concert Orchestra, Cyrus Trobbe director.  
8:35 to 10:00 p.m.—Rudy Seiger's Fairmont Hotel Concert Orchestra.  
10:00 to 12:00 p.m.—John Wolohan and his Californians at the Trianon Ballroom.

#### MONDAY, MARCH 14—

- 8:00 to 8:10 p.m.—Chamber of Commerce talk on "Industrial San Francisco," by Capen A. Fleming, director Industrial Department.  
8:10 to 8:25 p.m.—Book reviews by Harold A. Small of the Chronicle.  
8:25 to 9:00 p.m.—Bridge Lesson No. 20.  
9:00 to 10:00 p.m.—Studio program.  
10:00 to 11:00 p.m.—Billy Long's Cabirians.  
11:00 to 12:00 p.m.—KPO's Variety Hour, presenting the KPO well known artists.

#### TUESDAY, MARCH 15—

- 8:00 to 9:00 p.m.—"Uda Waldrop Hour," featuring Uda Waldrop, KPO's official organist, at the organ of the First Unitarian Church.  
9:00 to 10:00 p.m.—Studio program.  
10:00 to 11:00 p.m.—Palace Hotel Rose Room Dance Orchestra, Gene James director.  
11:00 to 12:00 p.m.—John Wolohan and his Californians at the Trianon Ballroom.

#### WEDNESDAY, MARCH 16—

- 8:00 to 9:00 p.m.—Program by the Atwater Kent Artists, under the auspices of Ernest Ingold, Inc.  
9:00 to 10:45 p.m.—KFI and KPO, Los Angeles Philharmonic Orchestra.  
10:45 to 12:00 p.m.—Billy Long's Cabirians.

#### THURSDAY, MARCH 17—

- 8:00 to 9:00 p.m.—Studio program.  
9:00 to 10:00 p.m.—Studio program.  
10:00 to 11:00 p.m.—Palace Hotel Rose Room Dance Orchestra, Gene James director.  
11:00 to 12:00 p.m.—John Wolohan and his Californians at the Trianon Ballroom.

#### FRIDAY, MARCH 18—

- 8:00 to 10:00 p.m.—Walter Krausgrill's Balconades Ballroom Orchestra.  
10:00 to 11:00 p.m.—States Restaurant Orchestra, Waldemar Lind director.  
11:00 to 12:00 p.m.—John Wolohan and his Californians at the Trianon Ballroom.

#### SATURDAY, MARCH 19—

- 6:30 to 7:30 p.m.—States Restaurant Orchestra, Waldemar Lind director.  
8:00 to 9:00 p.m.—Simultaneous broadcast by KPO and KFI of a program presented by the San Francisco branch of the manufacturers of White King and Mission Bell Soap.  
9:00 to 10:00 p.m.—Palace Hotel Rose Room Dance Orchestra, Gene James director.  
10:00 p.m. to 1:00 a.m.—Walter Krausgrill's Balconades Ballroom Orchestra.

Program Published as Submitted by the Station.

NOW THE **SUPREME R-F 5** IS SOLD  
FACTORY DIRECT TO YOU  
**5-Tube Console Complete**



**\$59**

Built-in speaker, large tubes, 100 A. H. Rubber Case Battery even the inside aerial is included—nothing else to buy.

**Selectivity :: Quality :: Distance**

New Modified S. L. F. condensers allow ample separation of low wave lengths and gives absolute selectivity on all stations. Using Kellogg's laboratory grade transformers assures you of tone perfection, and for distance the utmost in sensitivity has been achieved through proper design of condensers and inductance.

**Made of Finest Parts Obtainable**

The Supreme—Made of the finest of material such as Kellogg, Yaxley, Carter, C. R. L., Benjamin, Bakelite coils.

**Order Your Set Today**

and you'll say, like everyone else that hears the Supreme, "That's the best receiver I ever heard—it's wonderful." It's simply not equalled for purity of tone or fidelity of reproduction. Remember every part is guaranteed to you—you take no chances.

**THE PATTERSON FACTORY TO YOU SALES PLAN**

puts a guaranteed \$155 console, 5-tube receiver in your home for cash at about \$35 less than the actual wholesale price. Volume production is the answer.

**Patterson Radio Manufacturing Co.**

Established 1921

239 S. Los Angeles St.—VA. 8139

Los Angeles, Calif.



Howard I. Milholland  
Announcer

## Oakland, California—361.2 Meters

# KGO

4000 WATTS—830 KILOCYCLES  
PACIFIC COAST STATION, GENERAL ELECTRIC CO.  
Phone Fruitvale 5980

DAILY EXCEPT SUNDAY—

- 11:30 a. m. to 1:00 p. m.—Hotel Leamington concert.  
1:30 and 6:00 p. m.—Stock and weather reports. Baseball scores  
6:00 to 6:55 p. m.—Bem's Little Symphony Orchestra  
6:55 to 7:30 p. m.—Weather and stock reports.

WEEK COMMENCING SUNDAY, MARCH 13, 1927

SUNDAY, MARCH 13—

- 11:00 a. m.—First Congregational Church service.  
2:40 p. m.—San Francisco Symphony Orchestra concert  
6:30 to 7:30 p. m.—Concert by Bem's Little Symphony Orchestra  
7:30 p. m.—Weather Bureau report.  
7:35 p. m.—First Congregational Church service, Oakland.  
9:00 to 10:00 p. m.—Concert by Bem's Little Symphony Orchestra

MONDAY, MARCH 14—

- 4:00 to 5:00 p. m.—California Federation of Women's Clubs  
5:30 to 6:00 p. m.—KGO Kiddies' Klub.

TUESDAY, MARCH 15—

- 5:00 p. m.—Lectures by Dr. Virgil E. Dickson.  
8:00 to 9:00 p. m.—The Pilgrims. Eveready program by National Carbon Company  
9:00 p. m.—Joseph Henry Jackson, "Chats About New Books."  
9:20 p. m.—Surprise broadcast.

WEDNESDAY, MARCH 16—

- 5:30 p. m.—"The Caliph."  
8:00 p. m.—Farm program. W. O. W. Male Trio.

THURSDAY, MARCH 17—

- 5:00 to 6:00 p. m.—George W. Ludlow, "Friend to Boys"  
8:00 to 9:00 p. m.—"The Serenade," a comic opera.  
9:00 to 12:00 p. m.—John Philpott's Midshipmen.

FRIDAY, MARCH 18—

- 8:00 p. m.—Studio Program.

SATURDAY, MARCH 19—

- 8:00 p. m.—"Weekly Sport Review," by Al Santoro.  
8:15 to 9:15 p. m.—Program from Hotel Leamington, Oakland.  
9:15 p. m. to 1:00 a. m.—Dance music, Wilt Gunzendorfer's Hotel Whitcomb Band.  
*Program Published as Submitted by the Station.*



Chas. E. Gabrielle, Jr.  
Announcer

## Oakland, California—508.2 Meters

# KLX

500 WATTS—508.2 Meters  
OAKLAND TRIBUNE RADIOPHONE  
Phone, Lakeside 6015  
"Oakland, Where Rail and Water Meet"

DAILY EXCEPT SUNDAY—

- 7:00 to 7:30 p. m.—News broadcast.

WEEK COMMENCING, MONDAY, MARCH 14, 1927

MONDAY, MARCH 14—

- 10:30 a. m.—Martha Lee.  
8:00 to 9:00 p. m.—Special program.  
9:00 to 10:30 p. m.—Weekly meeting of Lake Merritt Ducks.

WEDNESDAY, MARCH 16—

- 10:30 a. m.—Martha Lee.  
6:30 to 7:00 p. m.—Athens Athletic Club dinner concert.  
8:00 to 9:00 p. m.—Educational program.  
9:00 to 10:00 p. m.—Special program.

FRIDAY, MARCH 18—

- 10:30 a. m.—Martha Lee.  
8:00 to 9:45 p. m.—Western Auto Supply program.  
9:45 to 10:30 p. m.—Athens Athletic Club Orchestra.  
*Program Published as Submitted by the Station.*



"MAC"

## San Francisco, California—268 Meters

# KFRC

Owned and Operated by Don Lee,  
California Distributor for Caollac Motor Car.  
50 WATTS—1120 KILOCYCLES  
LANSING TEVIS, Manager  
HARRISON HOLLIWAY, Station Master  
"Keep Forever Radiating Cheer"

DAILY EXCEPT SATURDAY AND SUNDAY—  
10:00 to 11:00 a. m.—Sherman Clay & Co. concert  
11:00 a. m. to 12:00 noon—Household Hints.

DAILY EXCEPT SUNDAY—  
12:00 to 2:00 p. m.—Eddie Harkness' Concert Orchestra.  
4:00 to 5:30 p. m.—Mark Hopkins Orchestra.  
5:30 to 6:30 p. m.—"Mac" and his Gang.  
6:30 p. m.—Stage and Screen.

WEEK COMMENCING SUNDAY, MARCH 13, 1927

### SUNDAY, MARCH 13—

5:00 to 6:00 p. m.—"Twilight Recital," with Dorothy Pasmore, 'cellist; Florance McEachren, soprano, and Frank Moss, pianist.  
6:30 p. m.—Stage and screen.  
6:30 to 8:30 p. m.—Mark Hopkins Concert Orchestra, Vinton La Ferrara, conductor.

### MONDAY, MARCH 14—

6:30 to 7:00 p. m.—Yale Radio Battery Trio dinner program.  
7:00 to 7:30 p. m.—KFRC Hawaiians.  
8:00 to 9:00 p. m.—Blue Monday Jamboree, with Mac and his Haywire Orchestra. A. J. Kane's detective story, and others.  
9:00 to 10:00 p. m.—Goodrich Silvertown Orchestra, Reg. Code directing.  
10:00 to 12:00 p. m.—Eddie Harkness' Mark Hopkins' Dance Orchestra, Ronald Johnson, tenor, and Marjorie Primley, pianist, during intermissions.

### TUESDAY, MARCH 15—

6:30 to 7:00 p. m.—Yale Radio Battery Trio dinner program.  
7:00 to 7:30 p. m.—Russell Colvin Trio, courtesy Russell Colvin Co.  
8:00 to 8:30 p. m.—Weekly meeting KFRC Radio Movie Club.  
8:30 to 9:30 p. m.—Washington's Birthday special program.  
9:30 to 12:00 p. m.—Eddie Harkness' Mark Hopkins Orchestra; William Hart, tenor;

### WEDNESDAY, MARCH 16—

6:30 to 7:00 p. m.—Yale Radio Battery Trio dinner concert.  
7:00 to 7:30 p. m.—"Puss" Donahoo's Orchestra.  
8:00 to 9:00 p. m.—KFRC Little Symphony Orchestra; Grace Le Page, soprano, soloist.  
8:00 to 9:00 p. m.—Musical Educational Talk, by John G. Vogel of Educational Department of Sherman, Clay & Co.  
9:30 to 10:00 p. m.—Studio program.  
10:00 to 12:00 p. m.—Eddie Harkness' Mark Hopkins Dance Orchestra. Juliette Dunn and Glenhall Taylor during intermissions.

### THURSDAY, MARCH 17—

6:30 to 7:00 p. m.—Yale Radio Battery Trio dinner concert.  
7:00 to 7:30 p. m.—Western Motors' courtesy program.  
8:00 to 9:00 p. m.—Mona Motor program, with Mona Motor Melody Maids; Mae Thompson, soprano, and others.  
9:00 to 10:00 p. m.—Organ recital with Theodore Strong at the console of the Aeolian pipe organ.  
10:00 to 12:00 p. m.—Eddie Harkness' Mark Hopkins' Dance Orchestra; Ronald Johnson, tenor, and Marjorie Primley, pianist.

### FRIDAY, MARCH 18—

6:30 to 7:00 p. m.—Yale Radio Battery Trio dinner program.  
7:00 to 7:30 p. m.—Studio program.  
8:00 to 10:00 p. m.—Gilfillan Bros., manufacturers of Gilfillan Neutrodynes, present KFRC Little Symphony Orchestra; Grace Le Page, soprano; Georges Simondet, tenor, and George Ainsa, basso.  
10:00 to 12:00 p. m.—Eddie Harkness' Mark Hopkins Dance Orchestra.

### SATURDAY, MARCH 19—

6:30 to 7:00 p. m.—Yale Radio Battery Trio dinner program.  
7:00 to 7:30 p. m.—Studio program.  
8:00 p. m. to 1:00 a. m.—Eddie Harkness' Mark Hopkins Dance Orchestra. 8:00 to 9:00 p. m., intermissions by Joe Benson, pianist; 9:00 to 10:00 p. m., intermissions by Juliette Dunn, soprano; 10:00 to 12:00 p. m., intermissions by Lou Emmel, baritone.  
*Program Published as Submitted by the Station.*

# \$1

## RADIO BATTERIES RECHARGED RENTAL BATTERIES FURNISHED

# \$1

Called For and Delivered—Within 4-Mile Radius  
Small Added Charges over 4 Miles

### LUDLUM & STEELE, Willard Dealers

965 Venice Blvd.

Call Westmore 6974

Los Angeles

# KFWI San Francisco, California—250 Meters

500 WATTS—1200 KILOCYCLES

DAILY EXCEPT SATURDAY AND SUNDAY—

6:00 to 7:00 p. m.—Dinner Hour Program.

7:00 to 8:00 p. m.—Sports, Police and Weather Reports.

**SUNDAY, MARCH 13—**

1:00 to 2:30 p. m.—William Bennett Recital.

2:30 to 3:00 p. m.—Organ Recital, broadcast from Civic Auditorium, San Francisco.

3:00 to 4:15 p. m.—Judge Frederick C. Hill will deliver a lecture entitled "Christian Science."

7:50 to 9:00 p. m.—Christian Science Church service.

9:00 to 9:15 p. m.—Piano Recital by Lucille Burton.

9:15 to 10:15 p. m.—Recital

**MONDAY, MARCH 14—**

8:00 to 8:20 p. m.—James Kingston, tenor; Clem Kennedy, pianist.

8:20 to 8:40 p. m.—Instrumental recital by Cowell Dien (piano and banjo).

8:40 to 9:00 p. m.—Aileen Coombs, contralto; Lucille Burton, pianist.

9:00 to 11:00 p. m.—Paul Kelli's Orchestra playing at the Il Trovatore Restaurant.

**TUESDAY, MARCH 15—**

8:00 to 8:30 p. m.—Gaylord Wilshire Ionaco Lecture.

8:30 p. m.—Panatrophe Concert.

9:00 to 10:00 p. m.—Who's Who and Why Club.

**WEDNESDAY, MARCH 16—**

8:00 to 8:20 p. m.—Recital by Stanley Painter, baritone, and Clem Kennedy, pianist.

8:20 to 8:30 p. m.—Becker Storage Program.

10:00 to 12:00 midnight—Paul Kelli's Trovatore Orchestra playing at Il Trovatore Restaurant.

**THURSDAY, MARCH 17—**

8:00 to 8:30 p. m.—Recital by Henry Haman, tenor, accompanied by Esther Haman.

8:30 to 9:00 p. m.—Instrumental recital by James Dillon, saxophone, and Alice Wise, banjo, accompanied by Clem Kennedy, pianist.

9:00 to 10:00 p. m.—Maxwell House Coffee Orchestra.

10:00 to 12:00 p. m.—Paul Kelli's Trovatore Orchestra playing at Il Trovatore Restaurant.

**FRIDAY, MARCH 18—**

8:00 to 8:30 p. m.—Gaylord Wilshire's Ionaco Lecture.

8:30 to 9:00 p. m.—Panatrophe Concert.

**SATURDAY, MARCH 19—**

9:00 to 12:00 p. m.—Paul Kelli's Il Trovatore Orchestra playing at the Il Trovatore Restaurant.

*Program Published as Submitted by the Station.*

## Distance — Selectivity

"Childs DX Filter" Achieves Both

A Combination of an Extremely Powerful Amplifier and a Perfect Wave Filter

### CHILDS LABORATORY

1187 W. 24th St.

BEacon 7445

Los Angeles, Calif.

## SHEPHERD RADIO SERVICE

Authorized Dealer for

**Stromberg-Carlson, Federal Ortho-Sonic Receiving Sets**

We specialize in correcting balky receivers. Super-Heterodynes, Infradynes, Roberts, etc., made to perform efficiently.

Transformers Matched, Coils Balanced

Phone Us Your Troubles. Our Service Will Please

Batteries Changed, Tubes Reactivated. Work Called for and Delivered

**GRanite 7482**

7562 Sunset Boulevard

Hollywood, California



STEPHEN I. GAYLORD  
Announcer

# Portland, Oregon—491.5 Meters

## KGW

1000 WATTS—610 KILOCYCLES  
THE MORNING OREGONIAN  
"Keep Growing Wiser"

DAILY EXCEPT SUNDAY—

- 7:15 a. m.—Setting up exercise.
- 9:45 to 10:00 a. m.—Women's health exercises.
- 10:00 to 11:30 a. m.—Town Crier, weather reports, news items
- 12:30 to 1:30 p. m.—Noon concert.
- 6:00 to 7:00 p. m.—Dinner Concert.
- 7:30 to 7:45 p. m.—Weather and market reports.

WEEK COMMENCING SUNDAY, MARCH 13, 1927

- SUNDAY, MARCH 13—**  
 10:55 to 12:30 p. m.—Morning services from the First Presbyterian Church.  
 4:00 to 6:00 p. m.—KGW Salon Orchestra.  
 7:30 to 9:00 p. m.—Evening Services from the Hinson Memorial Baptist Church.  
 9:00 to 10:00 p. m.—Concert by the Chevrolet Little Symphony Orchestra.
- MONDAY, MARCH 14—**  
 7:00 to 7:30 p. m.—Children's program.  
 8:00 to 10:00 p. m.—Vaudeville entertainment.  
 10:00 to 12:00 p. m.—Dance music by McElroy's Orchestra.
- TUESDAY, MARCH 15—**  
 2:30 to 3:00 p. m.—Women's matinee.  
 8:00 to 10:00 p. m.—Educational program.  
 10:00 to 12:00 p. m.—Dance music, featuring Herman Kenin and his orchestra.
- WEDNESDAY, MARCH 16—**  
 7:00 to 7:15 p. m.—Utility service.  
 7:30 to 8:00 p. m.—Albers Poultry School.  
 8:00 to 9:00 p. m.—Concert, courtesy 7th U. S. Infantry Band.  
 9:00 to 10:00 p. m.—Concert, by Maxwell-House-Coffee Orchestra, simultaneously with KFOA and KHQ.
- THURSDAY, MARCH 17—**  
 7:45 to 8:00 p. m.—Lecture, given under the auspices of the Catholic Truth Society of Oregon.  
 8:00 to 10:00 p. m.—Vaudeville entertainment.
- FRIDAY, MARCH 18—**  
 2:00 to 3:00 p. m.—Women's matinee.  
 7:00 to 7:30 p. m.—Children's program.  
 7:30 to 8:00 p. m.—Poultry talk.  
 8:00 to 9:00 p. m.—Concert by the Mission Bell Orchestra, from KGW through KFOA and KHQ.  
 9:00 to 10:30 p. m.—Dance music by Cole McElroy's orchestra.  
 10:30 to 12:00 p. m.—Weekly frolic of the Keep Growing Wiser Order of Hoot Owls broadcast with KMO, KFOA, KHQ.
- SATURDAY, MARCH 19—**  
 9:00 to 10:00 p. m.—Concert, Calumet Instrumental Quartet.  
 10:00 to 12:00 p. m.—Dance music, featuring Herman Kenin and his orchestra.  
*Program Published as Submitted by the Station.*

# KEX

## Portland, Oregon—447 Meters

4000 WATTS  
THE WESTERN BROADCASTING COMPANY, PORTLAND

WEEK COMMENCING SUNDAY, MARCH 13, 1927

- DAILY EXCEPT SUNDAY—**  
 5:30 to 6:00 p. m.—Radio code practice and daily radio chat by Clarence Clark, technical director of KEX.  
 6:00 to 6:30 p. m.—Children's Hour by direct wire from Wremers Chateau.  
 6:30 to 8:00 p. m.—Congress Hotel dinner music; Jimmie Davis and his Pompeian Orchestra.  
 8:00 to 9:00 p. m.—Studio program.  
 9:00 p. m.—Western Union time signals.
- TUESDAY, THURSDAY, SATURDAY**  
 9:00 to 10:30 p. m.—Studio program.  
 10:30 to 12:00 p. m.—Dance music, direct wire from Kremers Chateau.
- SUNDAY ONLY—**  
 3:00 to 5:00 p. m.—Concert Orchestra.  
 5:00 to 6:00 p. m.—Church services.  
 6:00 to 8:00 p. m.—Congress Hotel dinner music.  
 8:00 to 9:00 p. m.—Studio program.  
 9:00 p. m.—Time signals, Western Union time signals.  
 9:00 to 10:30 p. m.—Studio program.  
 10:20 to 12:00 p. m.—KEX Frolic.  
*Program Published as Submitted by the Station*



LUTHER J. JENSEN  
Announcer

## Seattle, Washington—454.3 Meters

# KFOA

1000 WATTS—660 KILOCYCLES  
Owned and Operated by Rhodes Department Store  
Arcade Square, Seattle, Washington  
P. B. GALE, Station Manager  
ROBT. PIERCE, Station Engineer  
ARTHUR W. LINDSAY, Program Director and  
Announcer  
MAX WELLS, Asst. Announcer

### DAILY EXCEPT SUNDAY—

12:00 to 12:15 p. m.—Local Produce News.

12:15 to 12:30—Farm News.

2:00 to 2:30 p. m.—Homemakers' and Shoppers' Bureau.

### WEEK COMMENCING MONDAY, MARCH 14, 1927

#### MONDAY, MARCH 14—

6:00 to 7:00 p. m.—Radio Studios Trio.

7:00 to 7:30 p. m.—Harold Weeks in Popular Song Program.

7:30 to 8:00 p. m.—Cruise of the Sound Ferry Line Buccaneers.

8:00 to 8:05 p. m.—Talk by Eugene Clare of the Dixie-Queen Anne Dyers & Cleaners.

8:15 to 8:30 p. m.—Industrial News by Manufacturers Association of Washington.

8:30 to 9:00 p. m.—KFOA Radio Movie Club.

9:30 to 11:00 p. m.—Bonnie Brae Dance Orchestra, remote control.

#### TUESDAY, MARCH 15—

12:30 to 1:30 p. m.—Kiwans Club Luncheon Program from the Olympic Hotel.

7:30 to 8:00 p. m.—Pitchford Sisters.

8:00 to 8:30 p. m.—KFOA Radio Bridge Game.

8:30 to 9:30 p. m.—Cheasty's Inc. presenting Cheasty's Male Quartet.

#### WEDNESDAY, MARCH 16—

12:30 to 1:30 p. m.—Rotary Club Luncheon Program from the Olympic Hotel.

7:00 to 8:00 p. m.—Hugh Baird's Ford-O-Crat Entertainers.

8:00 to 9:00 p. m.—Northern Bond & Mtg. Co. Orchestra (alternate Wednesdays).

9:00 to 10:00 p. m.—Maxwell House Coffee Orchestra and soloists presented by Cheek-Neal Coffee Co. from KGW, Portland.

#### THURSDAY, MARCH 17—

12:30 to 1:30 p. m.—Shrine Club Luncheon Program from the Chamber of Commerce Bldg.

6:30 to 7:30 p. m.—E. R. Butterworth & Sons Orchestra.

7:30 to 8:00 p. m.—Sunde & d'Evers Tentmakers.

8:00 to 8:30 p. m.—Doc Proelss "Cross-Eyed Family."

8:30 to 9:30 p. m.—Cheasty's Inc. Trio De Luxe.

9:30 to 11:00 p. m.—Bonnie Brae Dance Orchestra.

#### FRIDAY, MARCH 18—

12:30 to 1:30 p. m.—Members Council Luncheon Program from Chamber of Commerce Bldg.

6:45 to 7:00 p. m.—Automobile Club of Washington.

7:00 to 8:00 p. m.—Sherman Clay & Company Studio Program.

8:00 to 9:00 p. m.—The Mission Bell Concert Orchestra presented by the Los Angeles Soap Company from KGW, Portland.

9:00 to 10:30 p. m.—Burke & Farrar's Kirkland Serenaders.

10:30 to 12:00 p. m.—Weekly Frolic of the "Keep Growing Wiser Order of Hoot Owls," broadcast from KGW, Portland.

#### SATURDAY, MARCH 19—

7:00 to 7:30 p. m.—Children's program on the Big Blue Mona Motor Bus to KGW and KHQ.

8:30 to 9:30 p. m.—Cheasty's Inc. Dance Orchestra.

#### SUNDAY, MARCH 20—

2:00 to 3:00 p. m.—"Reo Flying Cloud Concert Orchestra" presented by the Lamping Motor Co.

*Program Published as Submitted by the Station.*

## Alternating Current Transformers

Filament  
Trans.  
\$5.00

I Specialize on Operating Sets  
Without Batteries

RAY CAMPBELL

Plate  
Trans.  
\$5.00

1217 Dwiggins Street, near N. Huntington Drive, Two Blocks from Sierra Vista Station,  
LOS ANGELES, CALIF. Phone GARfield 7891. Wholesale Dealers: COOK-NICHOLS.



FREEMAN H. TALBOT  
Announcer

Denver, Colorado—322.4 Meters

**KOA**

930 KILOCYCLES—5000 WATTS  
GENERAL ELECTRIC COMPANY  
Pacific Standard Time

"Rocky Mountain Broadcasting Station"

DAILY EXCEPT SATURDAY AND SUNDAY—  
10:45 a. m.—Weather, Stock and Produce Reports  
11:15 a. m.—Organ Recital.  
5:00 p. m.—Stock and Market Reports  
7:00 p. m.—Musical Program.

DAILY EXCEPT SUNDAY—  
11:15 a. m.—Organ recital.

WEEK COMMENCING SUNDAY, MARCH 13, 1927

SUNDAY, MARCH 13—

10:00 a. m.—Service of First Congregational Church.  
4:30 p. m.—Organ recital from Trinity Methodist Church.  
5:30 p. m.—Dinner concert.  
6:50 p. m.—Service of First Congregational Church.

MONDAY, MARCH 14—

5:30 p. m.—Dinner concert, Brown Palace Orchestra.  
6:30 p. m.—Children's hour, Denver Public Schools.  
7:15 p. m.—Studio program presented by Denver College of Music.

TUESDAY, MARCH 15—

2:15 p. m.—Talk, "Eating for Happiness"  
2:30 p. m.—Matinee for housewives.  
6:30 p. m.—Farm question box, George C. Wheeler, editor Western Farm Life  
8:00 p. m.—Radio instruction in auction bridge, conducted by studio players.

WEDNESDAY, MARCH 16—

5:30 p. m.—Dinner concert, Brown Palace Orchestra, Howard Tillotson, director.  
6:30 p. m.—Wynken, Blynken and Nod time.  
7:15 p. m.—Studio program presented by the KOA players, "My Wild Irish Rose."

THURSDAY, MARCH 17—

2:15 p. m.—Talk, "Migration of Birds."  
3:30 p. m.—Culinary hints.

FRIDAY, MARCH 18—

2:30 p. m.—Matinee for housewives.  
3:45 p. m.—Fashion review, given by the Gano-Downs Company, Denver.  
5:30 p. m.—Dinner concert, Brown Palace Orchestra, Howard Tillotson, director  
6:00 p. m.—"Aggie Kickoffs," Extension service, Colorado Agricultural College, Denver  
6:30 p. m.—Preview of International Sunday School lesson.  
7:15 p. m.—Studio program. D. & R. G. Band.

SATURDAY, MARCH 19—

9:30 p. m.—Dance program, Scheuerman's Colorado Orchestra, from Colorado Club, Denver.

Program Published as Submitted by the Station.

**THE 1930 RECEIVER**

DISTANCE  
SELECTIVITY



STONE QUALITY  
LESS STATIC

E. M. Sargent, Infradyne Inventor, Recommends  
the

**ELECTRIC LIGHTING SUPPLY CO.**

C. F. BAKER  
216 W. Third St.

Open Saturday Evenings

TRinity 3781



## New Owners of Pac. Wholesale, Inc.

Messrs. Walter Fagan, former Sales Manager of the Electric Corporation and Orvan Peterson, former Vice President of the Rocky Mountain Radio Corporation of Denver, Colorado, after negotiations covering a period of three months, have purchased the Pacific Wholesale Radio, Inc., from Messrs. Kenneth Glasby and J. A. Hartley. The deal was consummated March 1st.

The name of the company will be changed from the Pacific Wholesale Ra-

and the immediate shipment of orders to all out-of-town customers.

The Electric Corporation has increased their business enormously in the last year and one-half and Mr. Fagan has been in a good part responsible for this great increase.

Pacific Wholesale, Inc., will distribute Freed-Eisemann sets, speakers and B Eliminators, Cunningham Tubes, Ever-



J. A. HARTLEY

dio, Inc., to the Pacific Wholesale, Inc. Mr. Fagan will be the President and Orval Peterson Vice President and General Manager of the new company.

Walter Fagan is thoroughly conversant with all phases of the electrical and radio industry as he has spent twenty years in the jobbing and manufacturing end of this vast business. He was sales manager for many years of the Edison Electrical Appliance Company, Inc., manufacturers of the famous Hot-Point appliances. For the last year and one-half he has been sales manager of the Electric Corporation, where he inaugurated the five-minute Counter Service



WALTER FAGAN

ready Batteries and other well known lines of accessories. The new managers have inaugurated a sales policy of prompt service to their trade, both on delivered orders and at the counter. Franchised dealers in every city, town and locality will be protected.

The sale of the Los Angeles house of the Pacific Wholesale Radio, Inc., will have no effect on the Oakland and San Francisco houses. They will continue under the name of Pacific Wholesale Radio, Inc., and, both of these jobbing

establishments will continue under the direction of Mr. J. A. Hartley.

Mr. J. A. Hartley, the former owner of this company, is one of the best known men connected with the radio industry in Southern California.

He has given unstintingly of his time to establishing the radio trade organizations and in helping to get better broadcasting for the fans of this district. He is the president of the Radio Trades Association of Southern California, and the Radio Jobbers' Association.

Mr. Phil Gough and Mr. J. A. Hartley have been very active during the last season in forming the Radio Club of Southern California and Mr. Hartley will continue his efforts along this line. The Radio Club is an organization which will consist of the different branches of the radio industry and the radio set owners. Mr. Hartley is very optimistic about this new organization and believes that this club will have at least one hundred thousand members within a year.

---

## Timely Trade Topics

---

Of vital interest to those engaged in the wholesale distribution of radio equipment is the establishment of a modern testing, calibrating, and engineering laboratory in Los Angeles, equipped with the finest of precision instruments available. The laboratory is under the direction of Tom Lambert, one of the most competent men in his line in the West.

---

Alfred H. Bartsch, general sales manager, and T. C. Miller, sales manager for the Pacific coast for Bosch, have been recent visitors in Los Angeles. After leaving the south they will visit San Francisco, Portland, Seattle and Vancouver. While in Los Angeles they visited The Reiman Wholesale Electric Company, distributors of the Bosch line in Southern California.

---

Of especial interest to those who delight in building their own favorite circuits and also to those who have already a radio receiving set, is the opening of RADIO RECEIVER SERVICE in Los Angeles, where specialists will render a real service to the listener-in. A complete technical service will be maintained and alterations and repairs may be had on any type of receiving set.

The Stromberg Carlson Telephone Mfg. Company has inaugurated a new policy which is unique in the Radio business. Western Radio, Inc., 1224 Wall street, the Los Angeles jobbers for this well known line of sets, announce that all owners of Stromberg Carlson receivers, other than the late six-tube and the new five-tube models, may bring their sets to the nearest franchise dealer or to their address and for a very nominal sum may have the set rewired so that the new power amplifier tube and the socket poker equipment may be used.

---

Chanslor & Lyon of Los Angeles, Zenith distributors for the Southwest, have secured the services of F. P. Prentice as outside salesman. Mr. Prentice was formerly with Leo J. Meyberg Co., and previous to that had three years' experience with the Zenith line, so should be well equipped for his new position.

---

William H. Rowley has just closed the Alexander Radio Shoppe in Glendale, and in the future will manage the radio department of the R. & R. Electric Co., 357 South Vermont avenue, Los Angeles. Mr. Rowley features the Stewart-Warner line, and is equipped to render expert radio service of all kinds.

# BOTH SIDES OF THE "MIKE"

## Some Dish

A young bride asked her husband to copy off a radio recipe she wanted. He did his best but got two stations at once, one of which was broadcasting the morning exercises and the other the recipe. This is what he took down:

"Hands on hips, place one cup of flour on the shoulders, raise knees and depress toes and mix thoroughly in one-half cup of milk. Repeat six times. Inhale quickly one-half teaspoonful of baking powder, lower the legs and mash two hard-boiled eggs in a sieve. Exhale, breathe naturally and sift into a bowl.

"Attention! Lie flat on the floor and roll the white of an egg backward and forward until it comes to a boil. In ten minutes remove from the fire and rub smartly with a rough towel. Breathe naturally, dress in warm flannels and serve with fish soup."—Standard Gasoline Booster.

## "'Ello—Are You There?"

At 10:45 a. m., Los Angeles time, which was around 7:00 p. m., in London, on February 26th, KFI, Los Angeles, was connected by telephone with Mr. West, of 2LO, London, England. The conversation from Los Angeles was broadcast so that the event of the first telephone conversation between Los Angeles and London could be heard by thousands of people. The conversation was in regard to the rebroadcasting of a program by KFI, with London, which is to be presented tentatively between March 20 and March 28.

## A Million Stamps

Bell Post, American Legion, will broadcast over KMTR each Saturday night during March, between 8 and 9 o'clock, with Bill Hart, famous movie star, as the feature of the program. The Bell Post of the American Legion is giving a series of programs over various stations and asking radio fans

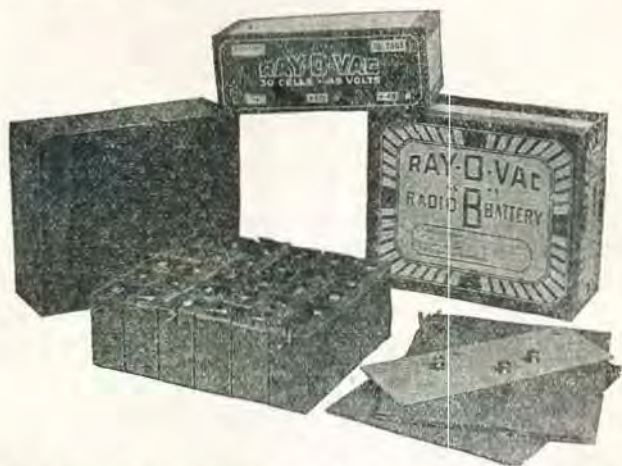


C. C. MCGONEGAL

who like them to send in a postage stamp, the money going to a fund to build a home for the Bell Legion, dedicated as a memorial to radioland. The idea was originated by C. C. McGonegal, armless commander of the post. Mr. McGonegal is delighted to report that up to this time more than 10,000 postage stamps have been received from all parts of California. The legion's slogan is "A Million Stamps to Do the Job."

# RAY-O-VAC

The French Battery Company of Madison, Wisconsin, is one of the largest manufacturers in the dry battery and flashlight field. The Company's products, advertised and sold under the trade name of Ray-O-Vac, are universally known for their high quality. This reputation the Company goes to great lengths to maintain. The secret of long service given by Ray-O-Vac products is the care taken in selecting raw materials, as well as in the process of manufacture. The purchaser of Ray-O-Vacs is certain to get the best that can be obtained.



The new radio batteries are the very latest effort to make Ray-O-Vac products the most serviceable of their kind to radio fans. The improved reception, with either of these batteries in the circuits, is very noticeable, due to their low internal resistance. Owing to a new type of construction they are light in weight, internal "shorting" is eliminated, and unusual dependability secured. These batteries are, indeed, "Radio's Best Battery."

## FRENCH BATTERY COMPANY

Madison, Wisconsin

737 Terminal St.

Los Angeles



# FEDERAL Ortho-Sonic

THIRTY AUTHORIZED  
FEDERAL DEALERS  
IN THE  
CITY OF LOS ANGELES

are waiting to serve you.

No matter where you live, you are assured of prompt and efficient service when you purchase a Federal Ortho-Sonic Receiver.

There is a Federal Set for every type of home, for every radio requirement, priced to suit everyone's pocketbook.



TEN BEAUTIFUL MODELS FROM \$100 TO \$1000

We Recommend

Eliminators

Elkon  
Modern  
Sterling  
Balkite

*Cunningham*  
RADIO TUBES

Since 1915-  
Standard for all Sets  
In the orange and blue carton

Speakers

Amplion  
Enchanter  
Herald  
Fine Arts

Wholesale Distributors

**Yale Radio Electric Co.**

LOS ANGELES

1111 Wall Street

Westmore 3351

**This file including all text and images are from scans of a private personal collection and have been scanned for archival and research purposes. This file may be freely distributed, but not sold on ebay or on any commercial sites, catalogs, booths or kiosks, either as reprints or by electronic methods. This file may be downloaded without charge from the Radio Researchers Group website at <http://www.otrr.org/>**

**Please help in the preservation of old time radio by supporting legitimate organizations who strive to preserve and restore the programs and related information.**