

# RADIO DOINGS

RED BOOK OF RADIO

10¢  
WEEKLY

*The Radio Authority  
of the  
Pacific Coast*



Jack Cronshaw and His Hollymaidens—Daily KMTR Feature

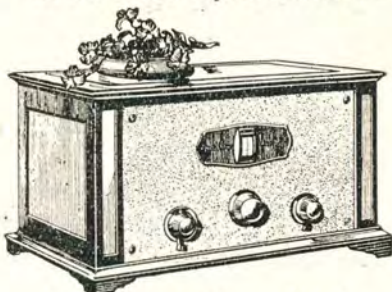
Vol. X

FEBRUARY 27—MARCH 5, 1927

No.9

# Kolster Radio

"A Parade of Stations"



Model 6-D, 6 Tubes—\$98.50

Every Kolster owner is an enthusiast! To find out why, step in and see your nearest Kolster dealer. He will be glad to demonstrate for you without obligation, for he, too, is a Kolster fan!

## LOS ANGELES

### Hollywood

ANDREWS RADIO Co.  
1704 McCadden Place  
GLadstone 0704

HOLLYWOOD RADIO Co.  
709 N. Western Ave.  
GLadstone 2897

OTTO K. OLESEN  
ILLUMINATING Co.  
6548 Hollywood Blvd.  
GLadstone 5194

### Wilshire

LA BREA ELECTRIC &  
RADIO Co.  
5222 Wilshire Blvd.  
WHitney 9114

### Highland Park

MCNEIL'S MUSIC SHOP  
5711 Pasadena Ave.  
GARfield 2583

## Northeast

NORTON & NORTON  
2211 N. Broadway  
CApitol 0484

## South

JENKINS RADIO SHOP  
8450-52 S. Broadway  
THornwall 4460

STURGIS MUSIC Co.  
4711 S. Broadway  
AXridge 7106

## Downtown

BULLOCK'S  
7th and Broadway  
BRoadway 6900

TUFTS-LYON ARMS Co.  
609 S. Olive St.  
TRinity 4626

## Southern California

### ALHAMBRA

ALHAMBRA RADIO ELEC.  
1855 W. Main St.  
Alhambra 2366

### ANAHEIM

HAMMELL'S MUSIC Co.  
124 E. Center St.  
Anaheim 145

### BALBOA

MODJESKA RADIO  
704 E. Central  
Newport Beach 125

### BELLFLOWER

BELLFLOWER ELEC. SHOP  
Downey 7130

### BURBANK

COLLINS RADIO  
223 E. San Fernando Blvd.  
Burbank 446-W

### EAGLE ROCK

WEAVER & KING  
5059 Eagle Rock Blvd.  
ALbany 3417

California Distributors of Kolster:

## H. Earle Wright, Incorporated

123-129 Second Street  
SAN FRANCISCO

415 East Eighth Street  
LOS ANGELES



# Kolster Radio

"A Parade of Stations"

Southern California Dealers—Continued

## GLENDALE

BUDWIG RADIO CO.  
201 N. Brand Blvd.  
Glendale 1801

## INGLEWOOD

SEVILLE RADIO SHOPPE  
6411 West Blvd.  
Inglewood 771-W

## LONG BEACH

PREST & DEAN RADIO  
356 American Ave.  
Long Beach 617-97

RIALTO RADIO CO.  
430 American Ave.  
Long Beach 653-171

## LOMITA

CALKINS HARDWARE  
1129 Narbonne  
Lomita 115

## MONROVIA

CLAUDE S. CHESSE  
125 W. White Oaks  
Main 458

## MONTEREY PARK

MONTEREY PARK MUSIC CO.  
102 E. Garvey  
Alhambra 1182-M

## PASADENA

ASHTON'S RADIOELECTRIC  
STORE  
1762 E. Colorado St.  
Colorado 4042

WILSON MUSIC CO.  
180 E. Colorado St.  
Terrace 6360

## POMONA

JOHN BURNLEY  
120 E. Second St.  
Pomona 1472

SCHWARTZ & HEIMERL  
228 W. 2nd St.  
Pomona 795

## REDLANDS

MUNZIG RADIO  
115 N. Fifth St.  
Main 863

## REDONDO

J. H. THORP RADIO  
124 S. Pacific Ave.  
Redondo 3621

## SAN BERNARDINO

THEW RADIO CO.  
Fleming Bldg.  
San Bernardino 381-12

## SAN GABRIEL

MURPHY & HENDRICKX  
243 S. San Gabriel Blvd.  
San Gabriel 3122

## SAN DIEGO

MARYLAND AUTO SUPPLY  
650 F Street  
Main 3590

MILLER BROTHERS  
30th and University  
Hillcrest 200

JACK M. WHITLEY  
411 C Street  
Main 4512

## SAN PEDRO

PACIFIC MUSIC CO.  
1025 Pacific Ave.  
San Pedro 295-W

## SANTA ANA

HAWLEY SPORTING GOODS  
305 N. Sycamore  
Santa Ana 1091-W

TURNER RADIO CO.  
118 E. Fourth St.  
Santa Ana 1172

## SANTA BARBARA

J. E. WILEY  
San Marcos Bldg.  
Santa Barbara 3971

## SANTA MONICA

CRONK MUSIC HOUSE  
406 Santa Monica Blvd.  
Santa Monica 26795

RADIO SERVICE CO.  
14th and Montana  
Santa Monica 26201

SANTA MONICA RADIO CO.  
305 Santa Monica Blvd.  
Santa Monica 24240

## SANTA PAULA

EVERY MUSIC CO.  
933 Main St.  
Santa Paula 97

## SIERRA MADRE

SIERRA MADRE ELEC. CO.  
(G. I. Farman)  
Opp. P. E. Station  
Main 120

## SOUTH PASADENA

THE RADIO ELEC. STORE  
1161 Fair Oaks  
Colorado 6574  
Eliot 3397

## TORRANCE

DE BRA RADIO CO.  
2175 Cravens  
Torrance 73-J

## UPLAND

PACIFIC COAST ENGINEER-  
ING CO.  
229 Second St.

## VENTURA

MOORE & FAZIO  
733 Canal St.  
Ventura 249

## WILMINGTON

WILMINGTON HDWE. CO.  
300 Canal St.  
Wilmington 20-J

"Rich  
Tone-Quality"

# KOLSTER

"Clear-Cut  
Selectivity"

# BONE DRY

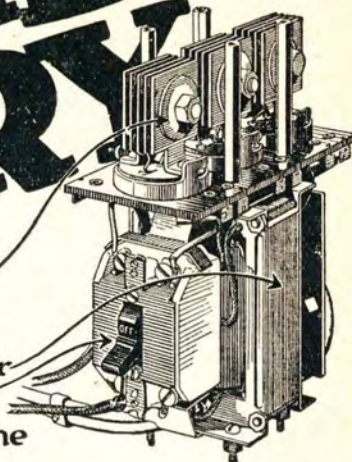
**\$14**

*Complete  
with Switch*

The *ELKON*  
Rectifier

(Solid throughout)

A Transformer  
A Switch



That is all there is to the

## *ELKON* *TRICKLE CHARGER*

Keeps your "A" batteries charged to highest efficiency ALWAYS.

No attention on your part.

No acids, alkali, water, moving parts, tubes, or interference.

It insures you constant power constantly, tapering off or increasing as needed.

**SET IT — INSTALL IT — FORGET IT**

*Wholesale Distributors*

**YALE RADIO ELECTRIC CO.**

1111 Wall Street

LOS ANGELES

WEstmore 3351



New York Office  
J. W. HASTIE  
155 East 42nd Street  
Vanderbilt 4661

Chicago Office  
A. G. RUDOLPH  
500 N. Dearborn St.

San Francisco Office  
CONGER & MOODY  
Sharon Building  
Kearney 8483

# Radio Doings

Trade Mark Reg. U. S. Pat. Off.

407 East Pico Street, Los Angeles, Calif.

## "The Red Book of Radio"

H. C. CHARLES  
*Editor*

Phone WESTmore 1401

KENNETH G. ORMISTON  
*Technical Editor*

J. S. MILLER  
*Associate Editor*

MAJ. LAWRENCE MOTT  
*Associate Editor*

(Entered as second-class matter, Nov. 25, 1922, Los Angeles, Cal., Post Office, under Act of March 3, 1897.)  
Copyright, 1926, by Horwood Publishing Co.  
Issued Weekly. Ten Cents a Copy, Three Dollars a Year. Canada and Foreign Countries, \$3.50 per Year.

Vol. X . Los Angeles FEBRUARY 26, 1927 San Francisco No. 9

## Last Prize Contest!

POPULAR radio broadcasting started in the Fall of 1921, but did not begin to really come into its own until the Spring of 1922. Mr. Horwood, a far-sighted business man and publisher, realized that the rapidly increasing number of set owners would need some medium which would conveniently list broadcast stations and their programs. RADIO DOINGS was started as a small pamphlet containing programs of three or four stations. In the last four and one-half years its publishers have constantly planned and added to the magazine so as to include, as far as possible, every need of the radio listeners-in.

The services of K. G. Ormiston, one of the best-known radio engineers in the country, have been obtained to direct the technical department and laboratory. Carey Preston Rittmeister, a well-known and popular home economist, conducts a page of special interest to women readers. Several departments have been added for the exclusive use of our readers, including the DX Club, Questions and Answers, and Listeners-in page. Other departments such as Radio Topics of the Day, Radiograms, Trade Topics and Broadcasters' Digest are maintained for general information concerning radio and radio people.

In any endeavor for perfection there is still room for improvement, and the only way that we can improve RADIO DOINGS is to learn what YOU, our friends and readers, like and dislike, want and do not want.

We offer a \$67.50 Master Pemco Heavy Duty 135-Volt A and B Eliminator as a prize for the best letter of not more than 500 words of criticisms and suggestions which would make a bigger and better RADIO DOINGS.

This contest is open to all of our subscribers and readers. Address your letter to the Prize Contest Editor. The winning letter and name of the writer will be published in RADIO DOINGS issue of March 28th.

### ONLY \$3.00 A YEAR

Have RADIO DOINGS mailed to your home every week. Fill out blank below. Either mail to us, or your dealer will be glad to take care of it for you. Please indicate whether NEW or RENEWAL.

HORWOOD PUBLISHING CO., 407 E. Pico St., Los Angeles,  
CONGER & MOODY, Sharon Building, San Francisco, Calif.  
Gentlemen: I enclose \$3.00, for which send me RADIO DOINGS for one year.  
NEW—RENEWAL.

Name \_\_\_\_\_

Address \_\_\_\_\_

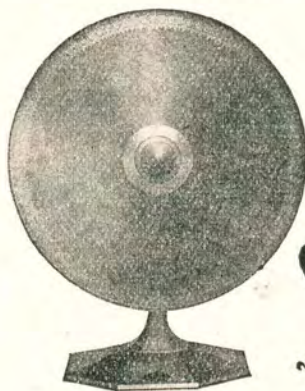
**UTAH**  
 Made in Salt Lake City  
 Trade Mark Registered

## GUARANTEED LOUD SPEAKERS

*We Wish to Announce the  
 Arrival of the New*

# Utah Junior Cone

13-inch Free Edge



ONLY  
**\$10<sup>00</sup>**

**GUARANTEE**  
 Buy a **Utah** and use it  
 for two weeks. Compare  
 its tone with the best the  
 others are able to produce.  
**If the Utah does not  
 give better recep-  
 tion** return it to your  
 dealer and **he will re-  
 fund your money.**

IMMEDIATE DELIVERY

## C. W. SMITH CO.

*Home of Utah Speakers*

WEstmore 3291

Los Angeles

1125 Wall



# Run Any Radio From Your Electric Current

With the Marvelous



## Radio AB Socket Power

*It makes no difference what kind or what make radio set you have, the PHILCO AB Socket Power will give you both A and B Radio Power from your electric light current.*

Think of it! Here is your opportunity to do away with dry-cell battery troubles, "B" batteries and the "A" storage battery. Your electric lighting current will now operate your radio set smoothly and perfectly.

### Installation FREE

The Philco dealer in your community understands exactly how to make this installation. He will do it, FREE OF CHARGE, and guarantee your complete satisfaction. You can safely buy from any authorized Philco dealer, anywhere.

### Yours On Easy Payments

You can buy the Philco AB Socket Power on EASY PAYMENT TERMS from any Philco dealer in your town. You merely make a small first payment and then you can pay the balance in easy monthly installments.

### Liberal Allowance for Your Old Storage Battery

It makes no difference what make of A storage battery you now have; it makes no difference how old or worn out it may be, the Philco dealer will make you a liberal allowance for it on the purchase of a brand new, guaranteed Philco AB Socket Power.

### Mail Coupon NOW

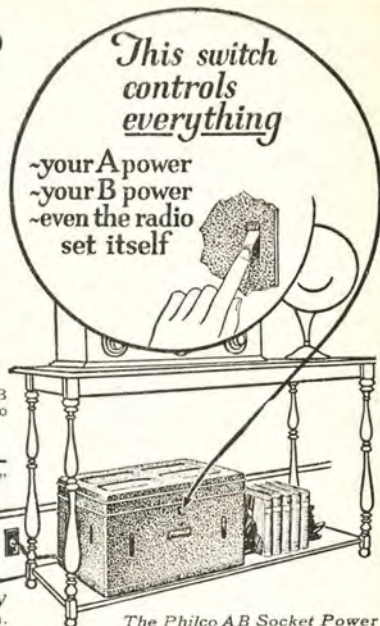
That is all you need do. Simply fill in the coupon and mail it to us.

Remember, this coupon is not an order. It does not place you under the slightest obligation. It is simply a request for free, illustrated descriptive literature, telling all about the Philco AB Socket Power.

### Philadelphia Storage Battery Company

Western Pacific Bldg., 1031 S. Broadway  
LOS ANGELES, CALIF., Dept. 5172

Factory, General Offices and Laboratories  
PHILADELPHIA, PA.



*This switch controls everything*

*~your A power  
~your B power  
~even the radio set itself*

*The Philco AB Socket Power is all contained in one cabinet*

### Easy as Turning on Your Electric Light

No more fuss! No more bother! No more annoyance caused by recharging and replacing! All you need to do is snap one little switch "ON" when you want to listen in, "OFF" when you are finished.

### No Hum! No Distortion!

The Philco AB Socket Power will give you absolutely the best reception without the least hum and without the least distortion. Your radio power is always steady, smooth and constant.

### Special Offer Coupon

Philadelphia Storage Battery Company  
Western Pacific Bldg., 1031 S. Brdw'y  
Los Angeles, Calif., Dept. 5172

GENTLEMEN:

Please send me, WITHOUT COST, the complete illustrated literature describing the famous PHILCO AB Socket Power. I also desire the full details of your Easy-Payment Plan and Trade-In Allowance offer. It is understood that this request does not place me under the slightest obligation.

Name.....

Address.....



# CeCo Fill Millions

## There's a CeCo Tube Made Specially for Your Radio Set

Every radio receiver requires one tube as a detector, one tube to feed adequate, undistorted power to the loud speaker, and may have one to six or more stages of intermediate radio or preliminary audio frequency amplification. Consult your CeCo dealer. He will tell you the right combination of CeCo tubes for your receiver to give you more distance, sweeter tones and better all around reception.

### CeCo City Dealers

**J. C. Rendler**  
625 S. Main

**Philco Sales & Service**  
1514 S. Hope

**Standard Radio**  
417 W. Pico

**Walker Radio**  
5835 S. Vermont

**Collinge Hardware Co.**  
3425 S. Vermont

**Glen H. Demer**  
6507 S. Kansas

**J. M. Andrews**  
209 W. 18th St.

**De Hoog Bros.**  
6120 S. Broadway

**H. H. Walker**  
1323 Venice Blvd.

**Sturgis Music**  
4713 S. Broadway

**Neilsson & Nelson**  
4320 Avalon

**Tivoli Radio Shop**  
4204 S. Central

**Phair Radio Co.**  
242 E. Florence

**Hines Radio**  
7322 S. Broadway

**Atwater Radio Shop**  
3208 Glendale Blvd.

**Holland Electric Shop**  
5632 Pasadena Ave.

**McNeil Music Co.**  
5711 Pasadena Ave.

**HOLLYWOOD**

**Cutler Radio**  
930 N. Western

**Barrows-Conkwright**  
5545 Sunset Blvd.

**Hetzel Radio Service**  
8303 Santa Monica

**Hollywood Elec.**  
6656 Hollywood Blvd.

**Hollywood Radio**  
709 N. Western

**Carmel Radio**  
8165 Santa Monica Blvd.

**Melrose Radio**  
5663 Melrose

**Lovinger-Melrose Radio**  
4426 Melrose



D



C



B



A

# Tubes of Sockets

## Clear Up the Tone with a CeCo Mogul Power Tube

Do you get a blast when you turn the volume up a bit? Do you get clear, sweet tones at low volume, but noise when louder? The trouble is probably right in one tube—the tube in the last audio stage. Change this tube to a CeCo Mogul Power Tube. Then turn up the volume . . . and it comes through clear from local or far away stations.

**CeCo Tubes Cost No More!  
You Must Be Satisfied—  
That's Guaranteed**

*A. J. Tobey Co.*

Radio Accessory Jobbers

15th and Hope Sts.

Westmore 4038

### Out-of-Town CeCo Dealers

**CULVER CITY, H. E. Blunt**  
6808 Putman

**PASADENA, Thomas & Summerville, 41 N. Broadway**  
Webster Electric Garage  
100 E. Union

**LONG BEACH, Klem Radio,**  
215 1/2 E. 4th St.

**LANKERSHIM, Lankershim Music Co., Lankershim**  
W. L. Bain,  
5241 Lankershim Blvd.

**VAN NUYS, Van Nuys Music Co.**  
Marsden Electric

**HERMOSA BEACH, C. Alexander, 530 Camino Real**

**MONROVIA, Mack Music Co.**

**REDLANDS, Dale E. Sliger**  
State and Third St.

**BELLFLOWER,**  
H. L. Peterson Shoppe  
Pacific and Mayne

**SAN DIEGO, College Service**  
Park and El Cajon

**Maryland Auto Supply Co.**  
Seventh and F

**ANAHEIM, Caverley Radio**  
217 W. Center

**EL CAJON, El Cajon Electric**  
EL SINORE, Elsinore Plumbing & Electric

**GARDEN GROVE, W. E. Ashley**

**BREA, Bennet's Radio**

**BANNING, Daly Elect. Store**

**LA HABRA, C. Perry**  
117 W. Center St.

**POMONA, Falls Tire & Battery Co.**  
201 East 2nd St.

**POMONA, Falls Tire & Batt. Co.**  
201 E. Second St.



E



F



G



H



# THIS IS A KIT YEAR

Buy the Kit of Parts for the Set you Want and Built it Yourself.  
Outstanding Among the New Circuits are the

## Infradyne - Silver Shielded Six Karas Equimatic - Madison Moore

All Parts for the IMPROVED INFRADYNE as Specified by Inventors now here. Complete Data in the Official Manual—25c. Send for it Now.

Complete stock of COAST COUPLER LONG WAVE RADIO FREQUENCY TRANSFORMERS, in stock for immediate delivery.

Look over the 630 Complete Kit of Parts for the SILVER SHIELDED SIX. Kit includes all Specified Matched Parts for the Set. Completely Shielded—using the famous 220 Audio and 221 Output Transformers, \$95.00—A Set Good for Years.

The Kit of Parts for the KARAS EQUIMATIC lists at \$60.20, and will produce a Set mighty hard to beat. Karas' latest.

MADISON MOORE "One Spot" Transformers are here. No more harmonics. Get a line on these—one of the biggest improvements of the year.

DEALERS: Park Next Door at Our Expense

# Radio Supply Co.

WHOLESALE

920 S. Broadway

VA. 6063

Los Angeles

New 1927 Catalogue Now Ready—Send For It

# Changes Are Made

Every day in Radio—and to keep your set abreast of the times—you will need new parts. The largest up-to-date stock of parts is at 920 South Broadway. Have your dealer pick up what you need.

Aaleo Loops  
 Accuratune Dials  
 Acme Apparatus  
 Acme Trickle Chargers  
 Advance Crystals  
 Aero Products  
 Aerovox Wireless Products  
 Alden Mfg. Co. Parts  
 All-American Products  
 Amertran Products  
 Amperites  
 Amsco Condensers  
 Arco Coils  
 Balkite Chargers, Etc.  
 Benjamin Elec. Mfg. Products  
 Brach Products  
 Brandes Speakers  
 Branston Coils  
 Bremer-Tully Products  
 Camfield Coils  
 Carborundum Products  
 Cardwell Condensers  
 Carter Products  
 Ceco Tubes  
 C R L Var High Resistances  
 Chicago Kester Solder  
 Clarostat  
 Continental Condensers  
 Crescent Transformers  
 Daven Radio Parts  
 DeJur Rheostats  
 DeLuxe Products  
 Dictogrand Speakers  
 Dongan Products

Dubilier Condenser Corp.  
 Dudlo Mfg. Co. Wire  
 Eby Binding Posts  
 Ekko Ground Clamps  
 Electrad Products  
 Electrohot Soldering Irons  
 Elkon Chargers  
 Formica Insulation Co.  
 Franco B. Batteries  
 Frost Products  
 General Radio Parts  
 Goodrich Rubber Panels  
 Hammerlund Products  
 Harkness Kits  
 Hedgehog Transformers  
 H-K Solderdip Lugs  
 Hoosiek Parts  
 Jefferson Products  
 Karas Products  
 Kelbrackets  
 Kellogg Parts  
 Switchboard Supply  
 Kodel Products  
 Kurz-Kasch Dials and Knobs  
 Leaf-Burkhard Cone Speakers  
 Lemco Transformers  
 Madison Moore Units  
 Marco Products  
 Mignon S. L. F. Condensers  
 Mueller Universal Clips  
 Muter Lightning Arrestors  
 Naald Truphone Units, Etc.

National Co. Parts  
 Pacent Products  
 Penetrola Kits  
 Polymet Mfg. Co. Condensers  
 Premier Parts  
 Raco Aerial Wire  
 Radiall Co. Amperites  
 Rauland Lyric Transformers  
 Raytheon Tubes  
 Remler Products  
 Samson Transformers  
 Sangamo Condensers  
 Sensory Insulators  
 Silite Trickle Chargers  
 Silver Marshall Products  
 Spaulding Bakelite Panels  
 Steinite Eliminators  
 Sterling Meters and Testers  
 Stevens Tools  
 Tectrite Hydrometers  
 Thordarson Transformers  
 Thorola Coils  
 Tohe Condensers  
 Tom Mack Products  
 Tower Speakers  
 Trimm Cone Speakers  
 Universal Battery Clips  
 Vesta Power Units  
 Victoreen Parts  
 Weston Products  
 Willard Batteries  
 X. L. Variodensers  
 Yaxley Products

**THORDARSON, ALL-AMERICAN AND MAGNAVOX  
 REPLACEMENT TRANSFORMERS IN STOCK**

**VESTA 35 and 50 Amp. and HOBICO A Power Units**

**ACME, GENERAL RADIO, ALL-AMERICAN, KODEL,  
 BALKITE, SILVER MARSHALL and STERLING  
 ELIMINATORS**

**ACME, STERLING, VESTA, BALKITE, TUNGAR and  
 SILITE TRICKLE CHARGERS**

DEALERS: Park Next Door at Our Expense

## RADIO SUPPLY CO.

WHOLESALE

920 S. Broadway

VA. 6063

Los Angeles

New 1927 Catalogue Now Ready—Send For It



The New

# Hexadyne 6-Tube

PORTABLE



**NEW IMPROVEMENTS WITH BEAUTY AND  
SIMPLICITY**

**SINGLE DIAL CONTROL  
OPERATES WITH A LOOP  
EXCEPTIONAL DISTANCE**

The Hexadyne stands today not only as the leader in the portable field but the recognized standard of advanced radio engineering. No other portable radio on the market compares with the Hexadyne for beauty of tone and simplicity of operation.

**List Price \$125.00 Complete with All Accessories**  
Including the New Power Tube

**Dealers Write at Once for Attractive Proposition**

WHOLESALE DISTRIBUTORS

**C. W. Smith Co.**  
1125 Wall St., Los Angeles

**Pacific Wholesale Radio, Inc.**  
1320 S. San Pedro, Los Angeles

# Radiograms

From  
CLOYD MARSHALL, JR.

Many a poor fish is caught by the lure of a trim ankle.

*A dog wags his tail to show pleasure,  
a man wags his tongue to show displeasure.*

Have you ever observed the horse that walks with his head down, stumbles most frequently?

**Don't judge a man by the bumps on his head. He may have a barber whose technique is poor.**

There is one man in the United States who can make President Coolidge open his mouth and that must be his dentist.

*Any poor fish can float and drift along with the stream, but it takes a regular live one to swim against the current.*

## SENSIBLE CLOTHES

The textile mills report that they have lost half of their business since fashion decreed that milday should wear knee length skirts. We feel sorry for the owners of the mills and the people who were thrown out of work by this unwritten edict but nevertheless we hope that the women will keep on wearing sensible clothes. The young women of today are the mothers of tomorrow so it is vital to our nation that they be healthy, for the healthier they are, the better will be the next generation. Dress has a lot to do with it.

# DAILY

(Except Sunday)

**12:30 to 1:30**  
**Community Program**



**KMTR**

MONDAY  
**POMONA**

TUESDAY  
**WHITTIER**

WEDNESDAY  
**ANAHEIM**

THURSDAY  
**GLENDALE**

FRIDAY  
**SANTA ANA**

SATURDAY  
**SPECIAL**

Direction of

**WALTER BIDDICK**

487 Chamber of Commerce Bldg.  
WEstmore 9137 LOS ANGELES



# Meet Our Friend

By K. G. ORMISTON

This week we are going to introduce to you a chap who seldom exercises his vocal cords before a "mike," and hence is little known to you. And yet it rests with him whether or not you will derive enjoyment in listening to any radio program. Regardless of how splendid a studio performance may be, it is all useless unless the care and manipulation of the transmitting equipment preserves the quality through all the intricate processes of transmission involved in putting the program "on the air."

You've guessed it. We are using this space in an effort to make you chummy with a young fellow to be found in the operating room of every station. If things are running smoothly you will find him at his desk listening to the outgoing program and carefully controlling the modulation. But if there's a "bug" in the works, the operator will be found hanging on the side of the transmitter cage like his Darwinian ancestor, poking his nose into close proximity with enough volts to knock a man across the River Jordan, frantically trying to make music sound less like static!

As a general rule, he knows his business. In fact, he is the only man around the radio station who knows anything about radio, though he is usually treated by the rest of the staff as a sort of necessary evil. In most cases he is an old-timer, who has grown up with radio, and sailed the seven seas with every type and vintage of wireless equipment. His station is to him as a child of his flesh,—he knows and understands its weak points, its limitations, its peculiarities.

He is forever checking the microphone balance, watching the red-hot plates of the tubes, looking for bright spots in the filaments, keeping an eye on at least a dozen meters, feeling the

bearings of the generators, checking the wave-length, watching the charging of the batteries, listening to the output, both in headphones and loudspeaker, and thus doing his level best to send a true and accurate reproduction of the program into your receiving set.

Simultaneously with the few duties mentioned, he carries on numerous telephone conversations with dear old ladies who call up to inquire just how to go about tuning in JOAK on their "Blabadyne" sets!

Very often when the announcer has murmured his final "Good Night," and all the lads and lassies of Radioland are tucked away, our friend, the operator, who has kept his set on the air for the last hour by the skin of his teeth, rolls up his sleeves and pitches in. A neat, orderly operating room presently resembles No-Man's Land as Big Bertha comes to pieces. The offending coil or condenser is eventually found, repaired or replaced, and the last connection goes back into place just in time to broadcast your morning setting-up exercises!

The one important thing in life for the operator, or engineer (as he likes to be called, and justly so), is to keep his station on the air at all costs. Any failure of his equipment during a program is a calamity of vast proportions, for which he holds himself personally responsible. Incidentally, and unfortunately, the boss takes the same view.

Now we're going to let you in on something. Sometimes the operator day-dreams a bit, forgets to watch the modulation, and permits perfectly good music to go out like so much hash. Listen! We'll tell you what happens when he wears that dumb look and stares unseeing at his panels.

His mind is far from the whirring generators and the dancing needles of

his meters. Wanderlust and the call of the briny deep have gripped him. He sniffs the tang of the sea and feels a throbbing deck beneath his feet. With the speed of ether waves, old familiar scenes flash before his mind's eye.

The stench of the Orient—The French Band in its evening concert on the Bund at Shanghai—The fan-tan tables of a famous gambling house on the Bubbling Well Road—The seething inferno of Kileau's crater.

For a moment he stands in the doorway of an Alaskan wireless shack and watches a June dawn—A fleeting glimpse of No. 9 in Yokohama with its painted faces and gorgeous crysanthemum blossoms—Cup Day at the Melbourne races—A rosy-cheeked barmaid in Auckland—

The picturesque "junk" fleet of the Yellow Sea—A hula dance 'neath the waving palms of Samoa—And best of all, Mount Tamalpias rising up out of the fog as the pilot comes aboard!

\* \* \* \* \*

And so, friend reader, you have met the broadcast operator. We hope you will like him and count him as much your friend as the announcers and artists whose names are so familiar to you. When you enjoy a radio program and have a feeling of appreciation for the efforts of those who have brought it to you, don't forget the man behind the switchboard (or more likely under it!). Give him a ring and tell him you like the way he puts out the stuff.

"She knows her beefsteak" is the highest compliment a man can pay his wife, according to Beulah Winburn, food expert, who is heard regularly over KOA.

Station 2LO, in London, devoted an evening recently to selections of the American composer, MacDowell, and a Glasgow station dedicated a program to Abraham Lincoln.

# \$5

## DOWN



# PUTS ~~PHILCO~~ SOCKET POWER

## On Your Radio Set

# PHILCO SALES & SERVICE Co.

1514 South Hope St.  
Phone Westmore 9065  
Phone or Mail Coupon for

Free Demonstration in Your Home

Name .....

Address .....

Phone .....

Radio .....





By CAREY PRESTON RITTMEISTER



"C. P. R."

One more field entered by women! We have established a place for our sex in athletics—tennis, golf, swimming—but here is a woman who has worked untiringly for the past ten years to win votes and public "jobs" for women she thought best fitted for the positions, and who has now been appointed to a post of great responsibility and honor—that of Commissioner of Immigration for the Port of Boston. Anna M. Tillinghast is the first woman to hold such a position, the appointment coming as a complete surprise to her, for she had not sought any official recognition for herself.

The other evening with some friends and seeking some unusual amusement after dinner, a Japanese picture theater on the East Side was brought to my mind as something interesting, the suggestion received by the crowd with some apprehension, but accepted. The picture, which was filmed in Japan, with Japanese actors, was well on its way when we entered the theater, so it was impossible to get the plot and ascertain just *why* the pretty little Japanese heroine was being pursued so relentlessly by the seven fierce Japanese men with long knives. Occasional strains of Japanese music from Japanese instruments lent atmosphere to the picture, but by far the most interesting feature was the announcer, who graphically and dramatically described in his native language each situation

and impersonated the characters in turn, producing the falsetto tones of the heroine with great pathos, the deep, guttural of the villain in a way to make your hair stand on end, and so on, from character to character; I believe he did it well. One of our party recalled the first American pictures shown, without titles and sub-titles, when an announcer was deemed necessary for the presentation of the different scenes and characters; so long ago most of us had forgotten. (Radio announcers please don't read this!) The possibility is suggested that some day even radio programs may be presented without announcers. (We just couldn't let that chance pass.)

It's a far cry from radio announcers to clams and oysters, but they are again on the bill of fare today, and I have some choice recipes gathered from the wives of Matagorda Bay. A most interesting bit of Texas is that bordering on Lavaca Bay. It was here that patriarchal "Uncle Joe" Gonzales lived and died; here, in his younger days he brought shiploads of camels from Spain for the United States Government, for use in travel across the great western desert. This little settlement of "Old Town" was made up of the Gonzales family and descendants, and fine German families, immigrants who had entered Texas at historic Indianola at the lower end of this bay, who lived well from their fishing boats, oyster beds, small farms of grain, and their cotton fields. From the respective countries are the following recipes which I have treasured these years:

Clean and dry 2 dozen oysters and place on ice. Rub yolks of 6 hard-

(Continued on page 76)



# Radio Topics of the Day

*A Weekly Review of Radio News, Thought and Opinion*

## RADIO CONTROL BILL PASSES

After more than a year of wrangling, Congress finally passed the radio control bill on February 18th. As this issue of Radio Doings goes to press, all that is lacking to make the Dill-White bill a federal law is the signature of President Coolidge.

To any one who has closely followed the proceedings before Congress, the political mixup occasioned by this measure is little short of amazing. Petty jealousies and presidential aspirations at times figured in the fray; Democrat fought Democrat, and Republican attacked Republican. But eventually, through his persistent efforts, Senator Dill, the Democrat, got his anti-Hoover bill passed by a Republican Senate, though his own party leaders were at times against him.

It is believed that the commission of five will be named by the President immediately the bill is signed. This commission will have complete control of radio for one year from the date of its organization, and thereafter will have the power to pass final judgment on all controverted questions and all those voluntarily submitted to it by the Secretary of Commerce.

Among other provisions are those designed to prevent monopolies, to assign and control wave-lengths, the number and power of stations, chain broadcasting, the hours stations may broadcast, and to prevent discrimination and excessive charges for broadcasting.

In the words of the poets, "It won't be long now!"

## THE PACIFIC CHAINS

The affiliation of high-powered broadcasting stations into what has been termed a "chain" was first instigated by WEAf of New York.

The Radio Corporation station WJZ of New York tied up several stations on its loop, and thus the advantages to be gained by the "chain" system have been more and more realized until now on the Pacific Coast we have two such affiliations in process of development. KFI and KPO have been linked for some time, but it is reported that they will shortly be definitely tied in with the National Broadcasting Company's loop, of which WEAf is the parent station. KGW of Portland, KOMO and KFOA of Seattle and KHQ of Spokane will be included also.

The second important affiliation is that of KJR of Seattle, KGA of Spokane, KEX of Portland, KYA of San Francisco, and the Los Angeles station still to be erected.

The recently completed KGA station with its power of 20,000 watts, is one of the six super-power stations in the United States. KEX just completed at Portland, is of 5000 watts power. The Francisco member of the chain, KYA, on the Clift Hotel, operates on 1000 watts. Now it is announced that a high-powered station is to be erected in Los Angeles as an important link in this chain. The five stations will be able to broadcast simultaneously programs originating in any one of the five studios.

KGA, Spokane, is operating on 341 meters, a separation of but four meters from KNX.



# Preston is SURE He Got Tokio



TOKYO HOSO KYOKU.  
(Transmitting Station)  
TOKYO, JAPAN

Mr. C. H. Preston  
Telegrapher S. P. RR. Co.  
Chatsworth Calif.

USA

WAVE LENGTH  
107.1  
METER

TOKYO **JOAK** TOKYO  
TOKYO BROADCASTING BUREAU

TELEPHONE  
(774) 4103

TOKYO  
December 5, 1925

Mr. C. H. Preston  
Chatsworth, Calif.

Dear Sir:-

Your reported reception from station JOAK TOKYO has been checked with our log, and verified for the dates of Nov. 11 & 14.

We have had reports as far as Iowa, Illinois, Indiana, Ohio, Penn & New York and will no doubt expect to hear more people from Pacific Coast.

We shall be pleased if you give us further information concerning your reception of our station.

Very truly yours,

TOKYO CENTRAL BROADCASTING BUREAU

M. O. Ogasawara  
Dept. of Affairs



Los Angeles business men listening to radio program from Tokyo, Japan, in Southern Pacific Station at Chatsworth

C. H. Preston, enthusiastic radio fan at Chatsworth, tunes in JOAK at Tokio, Japan, with a five-tube Stewart-Warner receiver hooked up with the "DX" Long Distance Ground invented by him and which is now being manufactured in quantities in Los Angeles. Preston's "DX" log includes JOCK, at Nagoya, Japan, two or three Australian and New Zealand stations and daylight reception of PWX, Havana, Cuba.

## Efficient Device Modernizes Old Phonographs

The great difference between the quality of reproduction of the old style phonograph and the modern high-priced instruments is in the fact that the records are now recorded electrically, and reproduced electrically. The modern machine incorporates an electrical amplifier and cone speaker, and therein lies its ability to reproduce the bass notes, the overtones and all the individuality of instrument or voice which makes its reproduction so perfect.

The modern radio receiver possesses these same units which give the new phonographs their superiority over the old type. Therefore, it is only necessary to devise a means of coupling an old style phonograph to a modern radio receiver to have all the advantages of the latest type expensive phonograph.

A device which accomplishes the coupling between the two units in a very satisfactory manner is known as the "Elec-tru-tone," now being manufactured under the Leishman patents. It comprises an electro-magnetic "pick-up" device, which is placed on the end of the phonograph tone arm in place of the old reproducer. This connects by flexible cord to the "volume control" unit. From the latter unit a long cord is fitted with a pronged plug for insertion in the detector socket of the radio receiver.

It is only necessary to remove the detector tube from the receiving set and insert the plug to complete all necessary connections between the phonograph and the set. The cone speaker of the radio then reproduces the records played upon the phonograph with a surprising and very pleasing result. When radio reception is desired it is only necessary to "slip out the plug attachment of the "Elec-tru-tone" and replace the detector tube.

# ELECTRIFY your RADIO SET with a BRACH



## CONTROLIT

THE HEART OF THE POWER PLANT

Place Complete Control of Power Plant and Set in One Switch—the Set Switch Itself.

Over 75,000 used within the first four months—adopted standard by every leading set and power supply manufacturer.

Price \$4.75

West of the Rockies

# Brach Radio Products

L.S. BRACH MFG. CO.  
NEWARK, N.J. TORONTO, CAN.



Makers of the Famous  
BRACH LIGHTNING ARRESTERS



# THE TROUBLE SHOOTER



ASK K.G.O.  
The Answer Man

KENNETH G. ORMISTON  
Technical Editor



*Hereafter all inquiries of a technical nature will be answered directly by mail. This policy has been adopted because of the fact that the majority of questions and answers are not of general interest. This space will be devoted each week to information covering general problems as indicated by the mail to this department rather than individual difficulties.*

Many inquiries are in regard to socket-power units and the troubles experienced. The subject is briefly discussed herewith, and will be covered fully in a future issue.

The B socket-power unit, usually comprising a rectifier tube, chokes, filter condensers, and resistance units, possesses several possible sources of trouble. The most likely of these are the resistances. It has been a difficult problem for the manufacturers to produce resistance units that would carry the current, stand the heat and yet not deteriorate. These resistances may, in a defective condition, cause considerable noise in the output of the set, or burn out. A voltmeter with a range of 150 volts should be used in testing for an open in the resistances. Connect from the B negative to the different taps and the open unit will be readily found.

A broken down filter condenser can be located by testing with a B battery and pair of headphones. The loud positive click of a direct circuit through the condenser is readily distinguished from the normal click of the charging and discharging of a healthy condenser. Choke coils may be tested for an open circuit by the headphone and battery method also.

The rectifier tube may fail to function even though the filament lights normally. A spare should be kept on hand. When the power units is suspected of creating noise, remove the an-

tenna from the set and note if the noise continues. Go over the set to satisfy yourself that the noise is not within the set in poor tube-prong contacts, etc. If the noise continues it is pretty certain to be in the power unit. If B batteries are available an absolute check is afforded by substituting them for the power unit. Noise from the power unit is usually caused by a poor connection or a defective resistance unit.

An inquiry which is often received in the technical mail concerns the gas-content soft detector tubes which many fans have substituted for the 201-A or 301-A types in the detector socket. They report that tuning has broadened with a lack of selectivity, and more or less "background" noise is present. They ask why these conditions should result.

The gaseous detector tube has a lower input impedance than the hard tube. In connecting it to the tuned circuit ahead of the tube, in effect a resistance is shunted across the tuned circuit, this resistance being of lower value than is the case when a hard tube is used. This acts as a "damper" on the tuned circuit and broadens it.

In the design of the modern receiving set every precaution is taken to minimize resistance in the tuned circuits, to maintain what has been called a "low-loss" condition, that all tuned circuits may oscillate freely at the frequency to which the circuits are tuned, and that the resonance curve be sharply "peaked." In other words, these are condi-

tions that make for good selectivity. The use of a hard tube with its high input impedance does not detract from the selectivity qualities of the particular tuned circuit which feeds it, but when a gas-content tube is substituted the effect upon the electrical characteristics of the circuit is as though a resistance value was shunted across it. This results in broader tuning and a certain degree of sacrifice in selectivity. This does not apply to regenerative circuits where the effective resistance of the grid circuit is controlled by the regenerative feed-back, but to the usual run of receivers where R. F. stages are used ahead of the detector.

Gas-content tubes have what is called a "background" noise. This manifests itself as a hiss somewhat similar to the microphone hiss when receiving a station.

It is at a minimum when the proper, more or less critical B battery voltage is found, and the rheostat adjusted to its proper point. While unnoticeable on strong signals it is apt to become annoying on very weak signals, just the time when you wish there were no "background" noises.

This type of tube is generally unstable also. It requires a lapse of time to "warm up," after which the A battery rheostat must again be adjusted for maximum sensitiveness. The soft detector tube should have its own separate rheostat, if any real advantage is to be had.

The soft tube is more sensitive as a detector than the hard type, but whether you will benefit by the substitution depends upon the circuits of your receiver, and your understanding and handling of the tube.

#### IN THE SHORT CIRCUIT

Judge (to prisoner): "What is your name, your occupation, and what are you charged with?"

Prisoner: "My name is Sparks. I am a radioman and I am charged with battery."

Judge: "Officer, put this guy in a dry cell."—*Telegraph and Telephone Age.*

Burgess Batteries

Cunningham Tubes

### FIGUEROA RADIO SHOP RADIO TRICIANS

Crosley Sets and Speakers

Expert Service on All Makes of Sets

TUcker 6763

747 S. Figueroa St.

## More Expert Testimony of CeCo Tube Superiority

FEDERAL TELEPHONE MFG. CORP. made a 1000-hour life test of 27 different makes of tubes. At the expiration of these tests their expert states "CeCo Tubes had an emission of 283% of the average." They remark that "these tubes have remarkable characteristics."

WALBERT MANUFACTURING CO., manufacturers of the well known Isofarad and Penotrola, say:

"We have been using your tubes along with other makes in our inspection department and found them to be very superior. The type H Detector pleases us particularly."

The VICTOREEN RADIO CO., manufacturers of the Victoreen Superheterodyne, say:

"These tubes are the best we have tested, and feel that your sales returns should be in proportion."

KENNETH HARKNESS now specifies CeCo Tubes for his new KH-27 receiver.

### These People Don't Guess— They Know

C. E. Manufacturing Co.  
Providence, R. I.

Pacific Coast Representatives

B. KRUGER &amp; CO.

500 North Huntley Drive

West Hollywood, Calif.

Sherman P. O.

Tel. OX. 3897





## FINE WORK, HENRY!

Long Beach, Calif.,  
February 17, 1927.

DX Club:

I have been reading your Red Book ever since it started, and am always interested in your DX section.

Being somewhat of a night-hawk myself, I have logged several DX stations to date. I have a Valley-Tone Model 52 (five tube) receiver. I use for an aerial a sheet of copper 30 inches square, rolled up in a funnel shape. This is on a pole 102 feet high, and well insulated from the pole. My ground is a four-foot copper tube, which I drove into the ground, surrounded by 6 old B batteries, smashed up, some rock salt and plenty of water.

I have had my set about 9 weeks and have logged over 300 stations to date. Reception is very poor in Long Beach, but I'll get the rest after awhile.

Here are a few of my best ones: 17 Chicago, 6 Colorado, 4 New York, 3 Detroit, PWX, KGU, JOCK, JOAK, 7SA, 2YK, CRCT (Chile), CYY, 5CL, 4QG, CFAC, CFCN, CFCT, CNRY, CFYC, AMB, and many others.

I will be glad to communicate with other Valley-Tone owners and DX'rs.

HENRY J. BRENNECKE,  
1557 Atlantic Ave.,  
Long Beach, Calif.

## ON THREE CYLINDERS!

Pico, Calif.

DX Club:

I have followed with interest the section of Radio Doings devoted to the DX Club. Some of the reports are very fine, but one thing is very noticeable. The majority of the receivers mentioned are from five tubes up to ten tubes. Let us bolster up the reputation of the simple regenerative set. I use a three-tube outfit of my own construction. Detector and 2 stages of audio. During a period of one month I have logged 81 stations. Chief among these are AMB, CNRY, CFBC, KFKX, KMOX, KOWW, KGW, KSL, KOA, KFXH, KDKA, KOIL,

KMMJ, WHO, WJZ, New York, WOC, WSAI, KYA, KOAC and a host of others. The remarkable fact was that most of them were through locals. I should be very glad to hear from other DXers who have simple regenerative sets.

ROBERT H. GIBBS.

Charles C. Curry of 1374 Kirkwood avenue Pasadena, sent us in a long list of stations received this fall on his Radiola 20. The most distant stations include WEAJ, KDKA, KYW and a flock of Canadians.

*Judging by the reports being received by this department Mr. JOAK may now be considered as a local station, as he seems to roll in on almost any kind of a set which is operating efficiently and in the hands of an enthusiast with more than the average tuning ability. The necessary requirements are: A good set, cunning in tuning, patience, permission from the good wife to stay up until 4 a. m., and, in some cases, plenty of imagination.*

## ANOTHER SUPER

Paso Robles, Calif.

DX Club:

This is radio station KIRK, Paso Robles, California, coming on the air with my list of distant stations.

I have all the Chicago stations and WHO, WCX, CNRE, WIP, WOO, WOR, WJZ, WTIC, WHAZ, WGY; four Australian stations—5CL, 3AR, 5DN and 2BL; one New Zealand station—VLDN; three Japan stations—JOAK, JOCK, JOBK; last, but not least, I have 7ZL, Hobart, Tasmania. Besides these, I have any number of 50-watt stations throughout the Middle-West, and all the local stations. All these stations come in on the loud speaker, with the exception of 7ZL and 5DN.

I am using a Radiola 28 with loop aerial. For a booster I have an outside aerial, and a ground wire, connected to a coil of wire hanging on the wall in the rear of the set.

Signing off,

KIRK.

# All You Members of the



## Listen to this

### C. H. Preston's "DX" Radio Ground can now be bought by mail!

We have taken over the distribution for the United States of the "DX" Radio Ground perfected by C. H. Preston, of Chatsworth.

Hundreds of members of the "DX Club" have read of this mystery ground in the "DX" columns of Radio Doings. The results secured by its use are almost unbelievable.

Preston plays Japan and Australia regularly on a \$52.50 Stewart-Warner receiver. Other owners of the "DX" Radio Ground report splendid distance reception.

It's a wonderful new development...easily installed...results will surprise you.

ORDER YOURS NOW!

### "DX" Radio Ground Ready for \$8.00 Installation POST PAID

#### NOTICE TO DEALERS

We have a wonderful dealer proposition on the DX Radio Ground. Everybody will want one. Write for particulars NOW.

## UNGAR & WATSON, Inc.

1366 So. Figueroa St.  
LOS ANGELES



*Your ear will immediately convince you that there is a difference!*

**Stromberg-Carlson**

**H**AVEN'T you very often wondered what Real Radio reproduction would sound like? Come and listen to a Stromberg-Carlson—it is a revelation in tone quality.

Miss June Parker  
Popular Blues Singer  
Afternoon Hostess—

at

### The Radio Studio

WILSHIRE BOULEVARD  
at 3831

Near  
Western

WAshtington  
4095

Authorized Dealer

## Stromberg-Carlson



# Broadcast Changes

## EIGHT MORE BROADCASTERS LICENSED

Eight more broadcast stations were licensed last week by the Department of Commerce, which, according to the legal interpretation of the old law by the Department of Justice, must authorize all applicants who seek to broadcast and have the facilities. These eight stations may be considered as lucky to get on the air, considering that the new radio legislation is so near enactment. Two Seattle stations, KXRO and KGDI signed off permanently.

Of the newcomers, Spokane gets a high-power station, KGA, to be operated by the Northwest Radio Service Company, is rated at 20 KW, which is sufficient power to bring its programs to the eastern and southern coasts. This company at the same time closed station KGDI at Seattle. The other new stations are all of lower power, except WNBA, at Forest Park, Illinois, which is rated at 500 watts. Geographically, the distribution gives Illinois two more stations and one each to New York, Mississippi, Texas, Colorado, California and Washington.

Wave pirates may have subsided in their efforts to select desirable channels free from as much station interference as possible. At any rate, there were no wave jumpers reported last week, the only changes being in name and in power.

## LIST OF NEW BROADCASTING STATIONS

Call	Owner	Wave Length Meters	Frequency Kcys.	Power Watts
KGA	Northwest Radio Service Co., Spokane, Wash. ....	340.7	880	20000
WNBA	M. T. Rafferty, Forest Park, Ill. ....	238	1260	500
WMBX	Crystal Oil Co., Columbus, Miss. ....	265.3	1130	100
KGFI	M. L. Eaves, Fort Stockton, Texas. ....	220.4	1360	15
WNBF	Hewitt-Wood Radio Co., Union Station, Endicott, N. Y. ....	205.4	1460	50
KOLO	Gerald K. Hunter, Durango, Colo. ....	355.1	844.3	5
WMBY	Robert A. Isaacs, Bloomington, Ill. ....	291.1	1030	15
KGFI	Ben S. McGlashan, Los Angeles, Calif. ....	218	1375	100

## CHANGES REPORTED

KWWG, Chamber of Commerce, Brownsville, Texas, name changed from City of Brownsville; power changed from 500 to 750 watts.

KGBY, Dunning & Taddikon, Shelby, Nebraska, name changed from Albert C. Dunning; power changed from 10 to 15 watts.

WPSW, Philadelphia School of Wireless Telegraphy, Philadelphia, call letters changed from WLBA.

WWRL, W. M. Rouman, Woodside, New York, name changed from Woodside Radio Laboratories.

## TWO DELETED

KXRO, Brott Laboratories, Seattle, Washington.

KGDI, Northwest Radio Service Co., Seattle, Washington.

# \$1

**RADIO BATTERIES RECHARGED**  
**RENTAL BATTERIES FURNISHED**

# \$1

Called For and Delivered—Within 4-Mile Radius  
Small Added Charges over 4 Miles

**LUDLUM & STEELE, Willard Dealers**

965 Venice Blvd.

Call WEStmore 6974

Los Angeles





# MONDAY TIME TABLE

ALL TIME TABLES ADJUSTED  
TO PACIFIC TIME  
(X) Indicates Station is On the Air

10-12 A.M.		12-2 P.M.		2-4 P.M.		4-6 P.M.		STATIONS		6-8 P.M.		8-10 P.M.		10-12 P.M.																					
10.00-10.30	10.30-11.00	11.00-11.30	11.30-12.00	12.00-12.30	12.30-1.00	1.00-1.30	1.30-2.00	2.00-2.30	2.30-3.00	3.00-3.30	3.30-4.00	4.00-4.30	4.30-5.00	5.00-5.30	6.30-6.00	CALL	Wave Length Meters	Power In Watts	STATION	6.00-6.30	6.30-7.00	7.00-7.30	7.30-8.00	8.00-8.30	8.30-9.00	9.00-9.30	9.30-10.00	10.00-10.30	10.30-11.00	11.00-11.30	11.30-12.00				
<b>SOUTHERN CALIFORNIA</b>																																			
X	X	X														X K F I	467	4000	Los Angeles	X	X	X	X	X	X	X	X	X	X	X	X	X	X		
			X	X												X K F C R	413	50	Santa Barbara																
																X K H J	405	500	Los Angeles																
																X K M I C	389	500	Ingewood	X	X	X	X	X	X	X	X	X	X	X	X	X	X	X	
			X	X												X K F B C	380	50	San Diego																
					X	X	X	X	X	X	X	X	X	X	X	X K M T R	370	500	Hollywood	X	X	X	X	X	X	X	X	X	X	X	X	X	X	X	
X	X	X	X	X	X	X	X	X	X	X	X	X	X	X	X	X K N X	337	750	Los Angeles	X	X	X	X	X	X	X	X	X	X	X	X	X	X	X	
			X	X												X K G E R	326	100	Long Beach	X	X	X	X	X	X	X	X	X	X	X	X	X	X	X	
																X K P S N	316	1000	Pasadena	X	X														
																X C Y H	311	1000	Monterey, Mex.	X	X	X	X	X	X	X	X	X	X	X	X	X	X	X	
			X	X	X	X	X	X	X	X	X	X	X	X	X	X A M B	301	100	Tia Juana, Mex.																
			X	X												X K F W C	295	100	San Bernardino																
																X K T B I	294	750	Los Angeles			X	X	X	X	X	X	X	X	X	X	X	X	X	
																X K S M R	283	100	Santa Maria			X	X	X	X	X	X	X	X	X	X	X	X	X	
																X K W T C	263	250	Santa Ana			X	X												
																X K F W B	252	500	Hollywood	X	X	X	X	X	X	X	X	X	X	X	X	X	X	X	
																X K F S D	248	1000	San Diego	X	X	X	X	X	X	X	X	X	X	X	X	X	X	X	
																X K N R C	238	1000	Santa Monica	X	X	X	X	X	X	X	X	X	X	X	X	X	X	X	
X	X	X	X	X	X	X	X	X	X	X	X	X	X	X	X	X K F O N	233	750	Long Beach	X	X	X	X	X	X	X	X	X	X	X	X	X	X	X	
			X	X												X K F Q Z	228	500	Hollywood	X	X	X	X	X	X	X	X	X	X	X	X	X	X	X	
																X K G F H	219	100	La Crescenta																
																X K F Y F	214	25	Oxnard, Cal.	X															
																X K F V D	205	500	Venice																
<b>NORTHERN CALIFORNIA</b>																																			
																X K F B K	535	100	Sacramento	X	X	X	X	X	X	X	X	X	X	X	X	X	X		
																X K L X	508	500	Oakland			X													
X	X	X	X	X	X	X	X	X	X	X	X	X	X	X	X	X K P O	428	1000	San Francisco	X	X	X	X	X	X	X	X	X	X	X	X	X	X	X	
			X	X	X											X K Y A	400	1000	San Francisco			X	X	X	X	X	X	X	X	X	X	X	X	X	
			X	X	X	X	X	X	X	X	X	X	X	X	X	X K G O	361	4000	Oakland	X	X	X													
X																X K Q W	333	500	San Jose	X	X	X	X	X	X	X	X	X	X	X	X	X	X	X	
																X K T A B	303	1000	Oakland			X	X	X	X	X	X	X	X	X	X	X	X	X	
X	X	X	X	X	X	X	X	X	X	X	X	X	X	X	X	X K F R C	268	500	San Francisco	X	X	X													
																X K R E	256	100	Berkeley																
X	X	X	X	X	X	X	X	X	X	X	X	X	X	X	X	X K F W H	254	100	Eureka																
																X K F W I	250	500	San Francisco	X	X	X													
																X K Z M	240	100	Oakland			X													
																X K M J	234	50	Fresno																
<b>NORTHERN AND WESTERN STATES</b>																																			
X	X	X	X	X	X	X	X	X	X	X	X	X	X	X	X	X K G W	491	1000	Portland	X	X	X	X	X	X	X	X	X	X	X	X	X	X		
																X K F O A	454	1000	Seattle			X	X	X	X	X	X	X	X	X	X	X	X	X	
			X	X												X C F A C	435	2000	Calgary																
																X K F X F	422	1000	Denver			X	X	X	X	X	X	X	X	X	X	X	X	X	
																X K H Q	394	1000	Spokane	X	X														
X	X	X	X	X	X	X	X	X	X	X	X	X	X	X	X	X K J R	384	20M	Seattle	X	X														
																X K L Z	384	500	Denver			X	X	X	X	X	X	X	X	X	X	X	X	X	
X	X	X	X	X	X	X	X	X	X	X	X	X	X	X	X	X K O A	322	5000	Denver	X	X	X	X	X	X	X	X	X	X	X	X	X	X	X	
																X K O I N	319	1000	Portland	X	X	X													
X	X	X	X	X	X	X	X	X	X	X	X	X	X	X	X	X K O M O	306	1000	Seattle	X	X														
																X K I K S L	300	1000	Salt Lake City	X	X	X	X	X	X	X	X	X	X	X	X	X	X	X	
																X K O W W	285	500	Walla Walla			X													
																X K O A C	280	500	Corvallis, Ore.	X	X	X	X	X	X	X	X	X	X	X	X	X	X	X	
																X K F J R	263	50	Portland																
X	X	X	X	X	X	X	X	X	X	X	X	X	X	X	X	X K M O	250	500	Tacoma																

Hours Shown as Submitted by These Stations. For DX Schedule see Page 38.





## TONE

So life-like it  
will thrill you.

## BASS

Full and reso-  
nant.

## PLENTY VOLUME

Controllable to a whisper.

# ELEC-TRU-TONE

## THE PHONOGRAPH MODERNIZER

Your present radio set and old phonograph contain most of the parts embodied in the expensive new electric reproducing phonographs. The **ELEC-TRU-TONE** supplies all the rest in readily attachable form.

Merely slip the **ELEC-TRU-TONE** reproducer of your phonograph tone arm in place of your old reproducer, and put the Elec-tru-tone connecting plug in the detector tube socket of your radio set whenever you play the phonograph.

## TWO MODELS

No similar device can compare with the **ELEC-TRU-TONE** here illustrated in the combination of tone quality, volume, physical beauty and simplicity of connections.

List price \$25.00.

Same **ELEC-TRU-TONE** reproducer, with different volume control requiring the permanent connection of two wires to your radio set.

List price \$17.50.

*For Sale by Leading Dealers*

## THE ELEC-TRU-TONE CORP.

Phone MAin 3843

Hibernian Building

Los Angeles

BAKER-SMITH CO., Inc.

Call Building, San Francisco  
National Distributors







# Anten-A-Liminator



Static, extraneous noises, many stations coming in at one time, unsightliness and a fire hazard are some of the disadvantages of an outside aerial.

Why get a jumble of noise from an instrument designed for pleasure?

Manufactured by:  
Geo. E. Browning Co.  
Ogden, Utah

If Your Dealer Can Not  
Supply You

Telephone VAndike 3297  
Or Write

## Scott Sales Co.

443 S. San Pedro St.  
Los Angeles, Cal.

The result of months of experimenting and exhaustive tests. Many times the selectivity of an outside aerial. Will make it possible for you to separate the lower wave length stations.

Small—Compact. Can be put inside or outside of the cabinet. Quickly installed.

Will take the Chaos out of the Air.



## \$8.50

See Absolute  
Guarantee  
with Every  
Instrument







# We Carry In Stock

the full range of

# CeCo Tubes



Used by Wm. R. Davies in winning the world's long distance record and endorsed and specified by all leading national authorities.



CeCo Tubes Spell More Distance.

CeCo Tubes Cost No More.



A CeCo Tube for Every Radio Purpose.

Satisfaction Guaranteed or your money refunded.

Authorized Wholesale Distribution

## C. C. LAWTON CO.

1125 Wall St.

Phone WEStmore 3291

Los Angeles

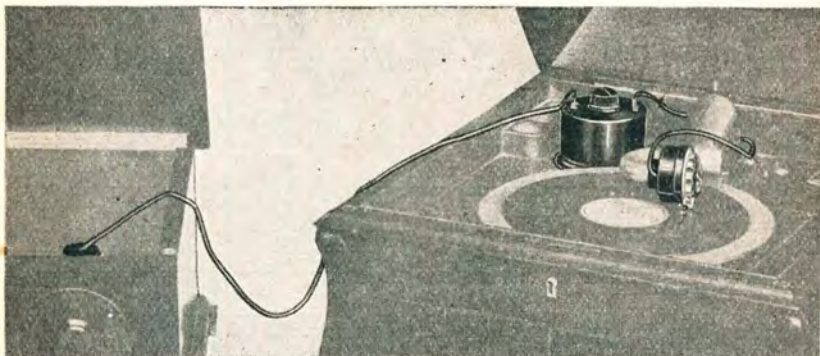






# ELEC-TRU-TONE

## THE PHONOGRAPH MODERNIZER



**YOUR RADIO SET**

**YOUR PHONOGRAPH**

All the new Victor, Columbia and Brunswick records are recorded electrically. Every note of every instrument is recorded in its proper volume. Fortunes were spent in perfecting the methods.

But the old phonographs will not reproduce all that is recorded. Most of the charm is lost.

To get the full benefit of the new records, electric reproducing phonographs were perfected. These are the marvelous new instruments that retail at prices from \$400 to \$1,000.

But your radio set and old phonograph already contain most of the parts embodied in these new electric machines. The Elec-tru-tone supplies all the rest in readily attachable form.

**TONE**—so life-like it will thrill you

**BASS**—full and resonant

**PLENTY VOLUME**—controllable to a whisper

*Sold by dealers that want you to get double use from  
your radio set.*

*Manufactured by*

**The Elec-tru-tone Corp., Hibernian Bldg., Los Angeles**  
Phone MAin 3843

*Distributed Nationally by*

**Baker-Smith Co., Inc., Call Bldg., San Francisco**

*California Jobbers*

**THE ELECTRIC CORP.**  
1050 Santa Street  
Los Angeles

**YALE RADIO ELEC. CO.**  
1111 Wall Street  
Los Angeles

**ELECTRIC SUPPLY CO.**  
370 Eleventh Street  
Oakland

**KIERULFF & RAVENSCROFT**  
645 Howard Street  
San Francisco

**COAST ELECTRIC CO.**  
744 G Street  
San Diego







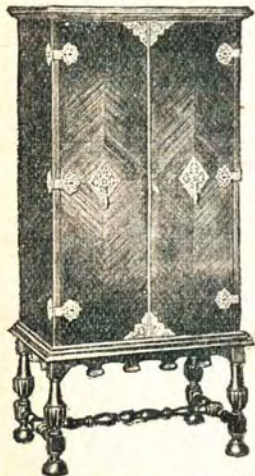
# Better Reception Beautiful Models

*Combine to Make*

## The Rauland Receivers

*The Choice of Discriminating People*

Loop or Antenna Operated, One Dial, Seven Tubes, Makes the Lorraine Model the Perfect Receiver



**\$355.00**

*Less Accessories*



Housed in a beautiful cabinet of walnut in Italian Renaissance design; hardware of cast brass, antique Italian design.

Other Models in Six and Seven Tube

Rauland Receivers \$190 to \$460

An Extensive Nationally Advertised Receiver

Carefully Selected Dealers Are Being Franchised In All Territories

Southern California Distributor

**HERBERT H. HORN**

1629 S. Hill St.

Los Angeles, Calif.

**ALL-AMERICAN RADIO CORPORATION**

Carl A. Stone, District Manager

1050 S. Los Angeles St.

Los Angeles, Calif.









Rear view above shows large compartment with ample space for batteries, battery charger, or battery eliminator, which are entirely concealed from view. Back is open for ventilation of batteries.



(Pat. Applied For)

**Model 200, with 22-inch  
Cone Loudspeaker**

This Windsor Cone Loudspeaker Console is equipped with a 22-inch Windsor Cone Loudspeaker. Its top is 30 in. x 17 in. and is 29 in. high. The battery shelf provides ample space for batteries, charger, battery eliminator and other equipment. Beautifully finished in either Mahogany or Walnut color.



Above is shown the Cone Loudspeaker, with its Panel, which is quickly and easily removable, allowing access to all batteries, battery charger, battery eliminator or other equipment and wiring.

Model 200

**\$35**

**Console with Cone  
Loudspeaker  
Ready for Set and  
Batteries**

# A Revelation in Radio Reproduction



**Model 210**  
22-inch Cone  
Loudspeaker  
with Panel and  
easel back

**\$18.00**

(Pat. applied for)

beauty, just as it entered the microphone.

\*\*\*

This 22-inch Windsor Cone Loudspeaker will reproduce the softest crooning lullaby in a softly lighted room, or the full throated march music of a band in an auditorium—both with perfect fidelity of sound and tone. The Windsor Cone Loudspeaker Console is the greatest value in the world of radio. When compared with the average cost of cone-type loudspeakers of even similar size, the cost of the complete Windsor—cone loudspeaker and console—its amazingly low.

\*\*\*

The Windsor Cone and Horn Loudspeakers, combined with attractive pieces of furniture in many models, are being demonstrated by recognized dealers everywhere. Go to your dealer today and examine this astonishing new Cone Loudspeaker Console. If he happens not to have one, write to us and we will tell you the name of the nearest store at which you can see and hear one.

\*\*\*

## NOTE TO DEALERS

Write or wire today for details of the highly profitable Windsor selling line.

At last—a cone loudspeaker that reproduces *all* the tones as they are broadcast. From the deep voiced tuba of an orchestra to the softest note of a vocal solo—*every* tone—*every* sound is reproduced in all its

As a piece of furniture, the Windsor Cone Loudspeaker Console is of such manifest high quality and attractive design as to be a welcome addition to any home. Finished in Mahogany or Walnut color.

## WINDSOR FURNITURE CO.

*World's Largest Manufacturers and Originators of  
Loudspeaker Consoles*

1420 Carroll Avenue, Chicago, Illinois

Los Angeles Branch: 917 Maple Avenue

R. D. 24  
**WINDSOR FURNITURE  
COMPANY**

Electrical Department,  
917 Maple Ave., Los Angeles.

Send me FREE and without obligation circulars of the Windsor line of Cone and Horn Loudspeakers combined with prices of furniture, and name of nearest dealer.

Name.....  
Address.....  
Dealer's Name.....  
City.....State.....



# Schedule of DX Stations

Call Letters	Location	W. L. Meters	Power Watts	Schedule of Concert and Dance Music						
				Sun.	Mon.	Tue.	Wed.	Thu.	Fri.	Sat.
WBBM	Chicago	226	1500	6-10	S.		6-10	6-10	6-7	6-10
WIBO	Chicago	226	1000		4-5				10-12	
WOWO	Ft. Wayne, Ind.	227	1000		5-9		5-9	5-9		
WHT	Chicago	238-400	3500		S.	8-10	8-10	8-10	8-10	8-10
WWAE	Plainfield, Ill.	242	5000	S.	6-9	6-9	6-9	6-9	6-9	6-9
WOOD	Grand Rapids, Mich.	242	1000						8-10	8-10
WBAL	Baltimore, Md.	246	1000	5-6	5-9	5-9	S.	5-9	5-9	S.
WRVA	Richmond, Va.	256	1000		6-8		6-8	6-8	6-8	
WKAF	Milwaukee	261	5000		6-8		6-8	6-8	6-8	
WCAR	San Antonio, Tex.	263	6000		8-9		8-9		8-10	
WENR	Chicago	266	1000		6-8	6-8	6-8	6-8	6-8	6-8
WGHP	Detroit	270	1500		S.	5-6	5-6	5-6	5-7	5-6
KGU	Honolulu	270	500	4-6	5-7	5-7	5-7	6-9	6-9	S.
WHK	Cleveland	273	1000	9-11	9-11	11-12		9-11	9-11	9-11
KFAL	Boise, Idaho	280	750	5-7	S.	5-8	5-7	5-8	5-6	5-8
KMOX	St. Louis	280	5000			7-9		7-9		
WSM	Nashville, Tenn.	282	1000	4-11	4-11	4-11	4-11	S.	4-11	4-11
WMBF	Miami, Fla.	284	5000		8-10		8-10			8-10
WPG	Atlantic City	300	5000	5-10	5-9	5-9	5-10	5-9	S.	5-10
WGN	Chicago	303	1000	6-8	5-9	5-9	S.	5-9	5-9	5-9
WLIB	Chicago	303	4000	6-8	8-9	6-9	6-9	6-9	6-9	6-9
KOIL	Council Bluffs	306	500			6-9	6-9	6-9	6-9	6-9
KDKA	Pittsburg	309	1000		5-11	8-10	8-10	8-10	8-10	8-10
WABC	New York	316	5000	S.	6-9	S.	6-9	S.	S.	9-11
WJAZ	Chicago	330	1500	5-7		6-10	5-9	5-7	5-7	5-7
WBZ	Springfield, Mass.	333	2000			6-9	6-9	6-9	6-9	6-10
KFAB	Lincoln, Neb.	341	1000	4-7	5-8	5-9	5-9	5-9	5-9	5-9
WLS	Chicago	345	5000			6-9		6-9		
WWJ	Detroit	353	1000	6-9		6-9	6-9	6-9	6-9	6-9
WDAF	Kansas City	366	1000	4-7	6-7	5-7	5-8	5-8	5-8	5-8
WJJD	Mooseheart, Ill.	370	1000	S.	6-11	6-11	6-11	6-11	6-11	6-11
KFBU	Laramie, Wyo.	375	500			6-11	6-11	6-11	6-11	6-11
KTHS	Hot Springs, Ark.	375	1000		8-10		8-10		8-10	
WGY	Schenectady, N. Y.	380	5000	7-10	7-10	7-10	7-9	7-9	7-10	7-9
WEAR	Cleveland	389	1000	6-7	S.	6-9	5-9	5-9	5-9	5-9
WTAM	Cleveland	389	1000	5-9	5-6	5-9	6-10	5-9	5-9	6-10
PWX	Havana, Cuba	400	1000	5-7	5-9	5-8	5-8	5-8	5-8	5-7
CYJ	Mexico City	410	1000	5-7		5-8		5-8	5-8	
KFQB	Ft. Worth, Tex.	412	2500		6-10	6-10		6-10	6-10	6-10
WCCO	St. Paul, Minn.	416	5000		5-8	5-8	5-8	5-8		5-8
KFXF	Denver	422	500	S.	5-11	5-11	5-11	S.	5-11	5-11
WLW	Cincinnati	422	5000	4-6	4-7	4-7	4-9	4-10	S.	4-7
WSB	Atlanta, Ga.	428	1000	4-6	5-9	5-9	5-9	5-9	5-9	5-9
WQJ	Chicago	447	500	5-7	S.	7-11	7-11	7-11	7-11	7-12
WMAQ	Chicago	448	1000	S.	4-5	4-8	4-8	4-8	4-9	4-9
WJZ	New York, N. Y.	454	50000	4-8	5-9	5-9	5-9	5-9	5-9	5-9
WBAP	Ft. Worth, Tex.	476	1500	7-9	7-10	7-9	S.	7-10	7-10	7-10
CYL	Mexico City	480	1000		7-9	7-9	7-10	7-9	7-9	7-10
WEAF	New York City	491	5000		5-9	5-9	5-9	5-9	5-9	5-9
WOW	Omaha	526	1000	7-9	7-9	7-9	S.	7-9	7-9	7-9
WNYC	New York City	526	1000		5-8	5-8	5-8	5-8	5-8	5-8
WHO	Des Moines	526	5000	5-8	5-10	5-10	5-10	5-10	5-10	S.
KYW	Chicago	536	3500	6-9	4-5	6-10	6-10	6-10	6-10	6-10
KSD	St. Louis	545	500	5-7	6-8	5-7		5-7	5-8	5-8
WOC	Davenport, Iowa	484	5000	4-9	S.	5-9	5-9	5-9	5-9	5-8
WJR	Detroit	517	5000	7-8	S.	5-7	7-9	6-7	S.	8-9
WOAI	San Antonio, Tex.	394	5000	5-7	S.	6-8	6-8	6-8	6-8	S.

Hours Shown as Submitted by These Stations Adjusted to Pacific Standard Time.

Crosley's 6-Tube Batteryless Radios—Childs Lab., 1187 W. 24th

# ZENITH

TRADE MARK REG.

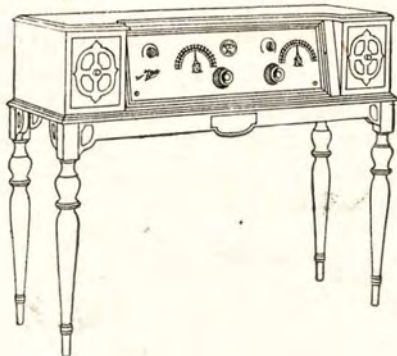
→ LONG DISTANCE ←

TRADE MARK REG. RADIO

## THE KING OF ALL SUPERS

Buy Your Radio with a Thought Toward the Future

The Zenith Electric means no charging batteries—No acids—no run-down batteries—it uses no batteries of any kind.



The Zenith De Luxe Models contain patented 10-tube circuit—dual speakers—single control—105 to 550 meters.

**Art Models \$685.00 to \$2,550.00**

Make a comparison with any other Radio set—side by side—in your home. See your nearest dealer for demonstration.

DISTRIBUTORS:

# CHANSLOR and LYON CO.

1423 S. Grand Ave.  
LOS ANGELES

Polk at Ellis  
SAN FRANCISCO





# These three inexpensive Stewart-Warner Models offer matchless performance



Reproducer ~  
Model 415 - \$31.50

The Stewart-Warner Matched Unit Radio line includes both one and three dial . . . five and six tube . . . receiving sets in both table and console type . . . two types of reproducers, one a new development that has made splendid performance records . . . Stewart-Warner double tuned tubes that have just been reduced in price to \$1.75 each, and laboratory tested antenna kits for aerial installation.

Reception reports made by Stewart-Warner owners, even those living in localities where reception conditions are unfavorable, pay splendid tribute to the efficiency of the U. S. Navy receiving circuit incorporated in Stewart-Warner receiving sets . . . all of them comment favorably on the tone, volume and selectivity of the receivers and the mellowness of tone developed in the three reproducer models.

For all its efficiency, Matched Unit Radio is not expensive. Any of the Stewart-Warner dealers whose names appear on this page will gladly demonstrate Stewart-Warner radio in your own home. Ask your nearest dealer to also demonstrate the National Home Power Unit for "A" current, and the famous Majestic "B" Eliminator which, with Stewart-Warner radio, make an unbeatable radio combination operating from the electric lighting current in your home.

### Los Angeles Dealers

ATWATER RADIO & ELEC. CO.  
3208 Glendale Blvd.

DEAN K. BARRIS  
3100 S. Vermont Ave.

BENSON HARDWARE COMPANY  
416 South Broadway.

BIRONG & BUSHARD  
1717 W. Adams St.

CALIFORNIA RADIO SHOP  
607 South Figueroa St.

CHAPMAN HOUSE SALES CO.  
4374-76 S. Figueroa St.

CLIFF'S RADIO SERVICE  
2635 Dayton Ave.

DON FINKLE  
2207 West Jefferson

A. W. COOPER  
1315 W. 39th St.

HARRY SAVOY  
828 W. Jefferson St.

HOLLAND ELECTRIC SHOP  
5632 Pasadena Ave.

HIDLEY RADIO & BIKE HOUSE  
817 South Main St.

HINES RADIO  
7822 South Broadway

INTERPHONE ELECTRIC CO.  
5510 Monte Vista St.

LOVINGER'S MELROSE RADIO SHOP,  
4436 Melrose Ave.

MANCHESTER RADIO CO.  
1522 E. Manchester Ave.

MOHAWK BAT. & RAD. CO.  
2115 Sunset Blvd.

### NILSSON & NELSON

4320 Avalon Blvd.

NORTON & NORTON  
2211 N. Broadway

POTTER RADIO SALES CO.  
1817 W. 54th St.

CHAS. A. ROBINSON  
4502 S. Normandie

RADIO ELECTRIC SHOP  
762 S. Vermont Ave.

A. C. SINGER  
4127 Pasadena Ave.

SOUTHWEST ELECTRIC & RADIO CO.,  
807 W. Florence Ave.

THAYER ELECTRIC CO.  
2908 Whittier Blvd.

VISSER RADIO AND ELEC. CO.  
4750 Whittier Blvd.

WEST STATES ELEC. CO.  
4751 South Broadway

### Hollywood Dealers

BARROWS & CONKWRIGHT  
5545 Sunset Blvd.

DORAN'S ELECTRIC SHOP  
7515 Sunset Blvd.

DORAN'S ELECTRIC SHOP  
8030 Santa Monica Blvd.

GLOW ELECTRIC CO.  
5910 Hollywood Blvd.

MELROSE RADIO SHOP  
5003 Melrose Ave.

### Southern California Dealers

ALHAMBRA, LoRoy G. Franklin  
644 W. Main.

ANAHEIM, Bennett's Radio Shop  
220 Center St.

ARROYO GRANDE, J. D. Truitt  
Arroyo Grande Plumbing and Electric Shop

ARTESIA, Wm. B. Hayes  
325 N. Main St.

BARSTOW, Barstow Radio Shop

BELLFLOWER, Stewart-Warner Radio Shop

Pacific and Mayne Sts.

BREA, Bennett's Radio Shop  
129 S. Pomona Ave.

CHATSWORTH, C. H. Preston & Son

CHINO, Woods Radio Company  
413 Sixth St.

COLTON, H. C. Bliss  
688 S. Seventh St.

COMPTON, Model Electric Co.  
138 E. Main St.

COVINA, Harold R. Houser  
115 College St.

CULVER CITY, Culver City Radio & Elec. Co.

6715 Washington Blvd.

EAGLE ROCK, Weaver & King  
5112 Eagle Rock Blvd.

EL SEGUNDO, B. W. McAllister  
114 Grand Ave.

EL MONTE, Weaver & King  
(El Monte Hdwe. Co.)

GARDENA, Don Spears  
725 W. 165th St.

GLENDALE, Alexander Radio Shoppes  
Alexander Theatre Arcade

2100 N. Brand Blvd.

GLENDALE, Willard Hellman  
(Broadway Elec.)

202 E. Broadway

GLENDORA, James M. Reed

HERMOSA BEACH, Rose Radio Store  
240 Camino Real

HUNTINGTON PARK, H. L. (Radio) King

116 E. Irvington St.

LYNES, Van & Jenkins

INGLEWOOD, R. D. Aylesworth  
111 N. Market St.

LANCASTER, E. A. Knell

BISHOP, Griffith Bros.

LONG PINE, Griffith Bros.

LONG BEACH, Alday & Granda  
1118 American Ave.

LONG BEACH, The Electric  
Radio Co.

1719 E. Anaheim

LONG BEACH, Harold A. Nickle  
189 Nieto St.

LONG BEACH, W. L. Horrell  
740 Pine St.

LYNWOOD, Lynwood Elec. Co.  
204 N. Long Beach Blvd.

NEWHALL, C. E. Graham  
Supply Co.

Bay and Main Sts.

ORANGE, Roy Des Larzes  
143 N. Glassell St.

PALMS, Brickell Radio Elec. Co.  
12204 Washington Blvd.

PASADENA, Wyckoff & Verrinder  
1447 North Lake St.

PASADENA, Premier Radio  
11 California St.

PASADENA, DeWilde Radio  
Laboratory

2048 East Colorado Ave.

PASO ROBLES, R. C. Heaton

PICO, Pico Radio Shop

POMONA, George W. Hlatt  
183 E. Third St.

REDDONDO, L. & L. Sales Co.  
210 Diamond St.

REDLANDS, J. L. Yount  
108 W. Citrus Ave.

RIVERSIDE, Frank W. Chaney  
906 Market St.

SAN BERNARDINO, Gurr, Smith & Gurr  
439 Fourth St.

SAN FERNANDO, Willis Rowe

SAN GABRIEL, A. Burman  
3550 E. Huntington Dr.

SAN LUIS OBISPO, Cline Elec. Co.  
986 Monterey St.

SAN PEDRO, San Pedro Furn. Co.  
228 W. Sixth St.

SANTA ANA, Shafer's Music Store  
415 N. Main St.

SANTA BARBARA, Val Folger  
732 State St.

SANTA MARIA, Ford & Smart  
118 E. Main St.

SANTA MONICA, J. S. Suite  
825 Wilshire

SANTA PAULA, The Music Shop  
104 W. Main St.

SATICUM, H. H. Wright  
Sixth and D Sts.

TAFT, L. H. Bird  
610 Center St.

TONOPAH, NEVADA  
Tonopah Electric Company

UPLAND, Jay M. Ross

VENICE, Stewart-Warner Radio  
Studio

1029 Washington Blvd.

WALNUT PARK, Terminal Electric  
1608 Seville St.

WESTMINSTER, Martin Engel

WHITTIER, H. C. Oldham  
128 S. Greenleaf

WILMINGTON, G. F. Clausen  
716 W. Anaheim St.

Stewart Warner Products Service Station  
{ Wholesale Distributors Stewart-Warner Radio }  
1366 South Figueroa Street - LOS ANGELES





**LESLIE ADAMS**  
Announcer

## Los Angeles, California—467 Meters

# KFI

4000 WATTS—640 KILOCYCLES  
Radio Central Super-Station of Earle C. Anthony, Inc.  
1000 S. Hope. Phone WE. 0331. After P. M., WE. 0337  
Class "B" 5000-Watt W. E. Sta., Operating on 4000 Watts  
ROBERT HURD, Program Manager

DAILY EXCEPT SUNDAY—

6:15 p. m.—Radiatorial.

6:30 p. m.—Vest Pocket.

MONDAY, WEDNESDAY AND FRIDAY—

KFI Woman's Interest Dept. Under the Direction of Agnes White.

- 10:20 to 10:40 a. m.—Furnishings for the home by Agnes White, director of the Dept.  
10:40 to 11:00 a. m.—Betty Crocker—Gold Medal Flour Home Service Talks.  
11:10 to 11:30 a. m.—Food talks by Agnes White.

WEEK COMMENCING SUNDAY, FEBRUARY 27, 1927

SUNDAY, FEBRUARY 27—

- 10:00 a. m.—Church services under direction of L. A. Church Federation.  
11:00 a. m.—Services by the Temple Baptist Church.  
2:50 p. m.—San Francisco Symphony Orchestra, Alfred Hertz director, presented by Standard Oil Company of California, broadcast simultaneously by KFI, KPO and KGO.  
6:00 p. m.—Program by the Russian Academy of Musical Art Trio, featuring Boris Myronoff, piano; Hischa Speigel, violin, and Alex Borrisoff, 'cello.  
7:00 p. m.—Evelyn Mason Jubilee Quartet, with soloists.  
8:00 p. m.—Packard Classic Hour, arranged by Carl Edward Hatch.  
9:00 p. m.—Bob Bottger and Venetians Dance Orchestra.  
10:00 p. m.—Packard Six Orchestra, Bill Hennessy director.

MONDAY, FEBRUARY 28—

- 5:30 p. m.—Virgil Ray's Winter Garden Orchestra.  
7:00 p. m.—Starke Sisters (Minnie and Maude); Hale Hooper, tenor.  
8:00 p. m.—Kitty Short, soprano; Leon Goldwasser, violinist; May Orcutt, accompanist;  
9:00 p. m.—Mrs. Edward C. Crossman, contralto; Ruth Rodecker, mezzo soprano; Fred Scott, tenor.  
10:00 p. m.—Program by Meiklejohn Bros.

TUESDAY, MARCH 1—

- 5:30 p. m.—The Dragon Hawaiians.  
7:00 p. m.—Jack Martin's Hawaiian Trio; Joey Star and his orchestra.  
8:00 p. m.—Gattone String Quartet, with Virginia Flohri, soprano, and Will Garroway, pianist.  
9:00 p. m.—Thomas Wallace, baritone; Leontine Redon, mezzo soprano; Leoline Walton, concert pianist.  
10:00 p. m.—Program the Azure Music Club; Glenn Edmunds and his Collegians.

WEDNESDAY, MARCH 2—

- 5:30 p. m.—Matinee program.  
7:00 p. m.—Ray Fisher's Original Victorians Dance Orchestra.  
7:30 p. m.—Nick Harris, detective stories.  
7:45 p. m.—William MacDougall, Scotch comedian.  
8:00 p. m.—Alma Frances Gordon, contralto; Calpet String Quartet, Ray Bailey director; Paul Roberts, tenor; Lilyan Ariel, pianist, on the California Petroleum Corporation program.  
9:00 p. m.—Los Angeles, Philharmonic Orchestra, Walter Henry Rothwell conductor; Virginia Flohri, soloist, with the orchestra, presenting the program from the stage of the Philharmonic Auditorium, by the Standard Oil Company of California, broadcast simultaneously by KFI and KPO.

THURSDAY, MARCH 3—

- 5:30 p. m.—Sebastian's Cotton Club Orchestra.  
7:00 p. m.—Program by the University of Southern California.  
8:00 p. m.—KFI Drama Hour; Grace Mead, soprano.  
9:00 p. m.—J. Maurice Woods, baritone; Bonnie Adair; Silvertone Ladies' Quartet.  
10:00 p. m.—Johnston and Farrell's Music Box Hour, Director Gene Johnston.

FRIDAY, MARCH 4—

- 5:30 p. m.—Henry Starr, pianist and vocalist.  
7:00 p. m.—Aeolian organ recital.  
8:00 p. m.—Program by Paul Roberts and Leslie Adams.  
9:00 p. m.—Monrovia High School Orchestra.  
10:00 p. m.—Packard Ballad Hour: Emma Kimmel, soprano; Harry Rowe, baritone;

SATURDAY MARCH 5—

- 5:30 p. m.—Mosby's Hot Five Dance Orchestra.  
7:30 p. m.—Felipe Delgado; Media Hora Espanola; Edna Clark Murr pianist.  
8:00 p. m.—Mission Bell Orchestra, Pryor Moore, director; Matilda Present, soprano; Robert Hurd, tenor; Ferez Steiner, 'cellist, on a program by the Los Angeles Soap Company, broadcast simultaneously by KFI, Los Angeles, and KPO, San Francisco.  
9:00 p. m.—Alma Frances Gordon, contralto; Lilyan Ariel, pianist.  
10:00 p. m.—Packard Radio Club.  
11:00 p. m.—Midnight Frolic.

Copyright 1927 by Earle C. Anthony, Inc.  
Program Published as Submitted by the Station.



# for Kellogg, Gilfillan

and these great accessories

# Sherman, Clay & Co!

Good  
Territory  
Still Open  
to Live  
Dealers



- Victor**  
loudspeakers
- Rola**  
cone speakers
- R. C. A.**  
radiotrons
- Eveready**  
batteries
- Philco**  
batteries and  
socket powers
- Westinghouse**  
"Auto-Power"  
A-Battery  
eliminators
- All-American**  
B-Battery  
eliminators
- O'Neil**  
cone loud-  
speakers
- Brach**  
relay switches
- Gilfillan**  
receiver
- Kellogg**  
receiver

Kellogg Console Model, shown above,  
contains Speaker of "folded air column"  
type; amplifies all frequencies impartial-  
ly and delivers tone exactly as broadcast.  
Non-microphonic — cannot squeal or  
howl.

Without Accessories, \$375.00.

Table Model, Without Accessories, \$230.00.

*Coast Distributors—*

## Sherman, Clay & Co.

*Victor Distributors*

Los Angeles: 10th and Santee Sts.  
San Francisco: 536 Mission St.  
Oakland: 5175 Telegraph Ave.  
Portland, 487 Glison St.  
Seattle: Republican St. and Terry Ave.  
Spokane: 330 West Sprague Ave.

For information as to DEALER TERRITORY clip and mail this  
to nearest Sherman Clay & Co. wholesale branch. (R. D.)

Name \_\_\_\_\_

Address \_\_\_\_\_

Interested in \_\_\_\_\_



"Uncle John" Daggett  
Announcer

## Los Angeles, California—405.2 Meters

# KHJ

500 WATTS—740 KILOCYCLES

Times Bldg., First and Broadway, Los Angeles  
Owned and Operated by Los Angeles Times

JOHN S. DAGGETT, Manager and Program Announcer

Phone MEt. 0700

"Kindness, Happiness and Joy"

NIGHTLY EXCEPT SUNDAY AND MONDAY—

7:30 p. m.—Scripture Reading.

WEEK COMMENCING SUNDAY, FEBRUARY 27, 1927

### SUNDAY, FEBRUARY 27—

- 10:00 a. m.—Sermon from the KHJ Studio by Dr. Charles F. Hutslar, pastor of Washington Christian Church of Pasadena.  
10:30 a. m.—Morning services from the First M. E. Church, Sibley G. Pease, organist.  
7:00 to 8:00 p. m.—Evening services from the First M. E. Church.  
8:00 to 10:00 p. m.—News items. Program featuring Burr McIntosh from 8:15 to 8:45, called "Cheerful Philosopher"; Frederick MacMurray, viola; Louise Miller, studio pianist.

### MONDAY, FEBRUARY 28—

- 8:00 p. m.—News items and weather report.

### TUESDAY, MARCH 1—

- 2:30 p. m.—Bridge game.  
6:00 to 6:30 p. m.—KHJ Trio and J. Walter Leopold.  
6:30 p. m.—Queen Titania and her Sandman; Charles D. McRoy's Harmonica Band; George Kerr, mandolin soloist; Betty Jane Uhl, juvenile pianist, and others.  
7:40 p. m.—H. M. Robertson will speak on "Dogs."  
8:00 to 9:00 p. m.—News items. Program by Pokrovsky Institute of Music.  
9:00 to 10:00 p. m.—Musical program with visiting artists from KOIL, Council Bluffs, Ia.  
10:00 p. m.—Los Angeles Railway Orchestra.

### WEDNESDAY, MARCH 2—

- 2:30 p. m.—Garden talk by Fred McNabb.  
6:00 to 6:30 p. m.—KHJ Trio and J. Walter Leopold.  
6:30 to 7:40 p. m.—Children's program presenting Dick Winslow, screen juvenile; Glenn Fitz, "Optimistic Mascot"; Patricia Eccleston, "Little Daffodil"; Lois Jane Campbell, "Brown Eyes," and Vivian Marple, "Blue Bell of KHJ."  
7:40 p. m.—Dr. Mars Baumgardt, "Astronomy."  
8:00 to 10:00 p. m.—News items. Program presented by Tyroleon Zither Club.  
10:00 to 11:00 p. m.—Jinnistan Vale Orchestra.

### THURSDAY, MARCH 3—

- 6:00 to 6:30 p. m.—KHJ Trio and J. Walter Leopold.  
6:30 p. m.—Children's program including Joyce Coad, "Little Red Riding Hood"; June Brandon, contralto; Dickie Brandon, reader; Rosetta Lewin, "Curley Locks," and Jeanne DeBard, "Bonnie Jeanne," and others.  
7:40 p. m.—Dr. Philip M. Lovell, "Care of the Body."  
8:00 to 10:00 p. m.—News items and de luxe program presenting Zoellner Quartet, Leo H. Sansiper, Russian baritone.  
9:00 p. m.—Arthur Edwin Wake, assistant pastor of Wilshire Presbyterian Church.  
10:00 to 11:00 p. m.—Glenn Edmunds and his Varsity Four.

### FRIDAY, MARCH 4—

- 6:00 to 6:30 p. m.—KHJ Trio and J. Walter Leopold.  
6:30 p. m.—Children's program presenting Marguerite Bringham, "Nightingale"; Henrietta Poland, "Forget-Me-Not"; Richard Headrick, "Little Minister"; Roberta Bush, "Firefly"; Catherine Cotter, "Sweetheart of Radioland"; Billy Lord, "Police Comrade"; Margaret Bond, violinist; Bettiemae Pfefferkorn, "Bob o' Link."  
8:00 to 10:00 p. m.—News items. Musical program presenting Grace Currey, harpist; Dot Street, soprano, and others.  
9:00 p. m.—Talk on international relations.

### SATURDAY, MARCH 5—

- 6:00 to 6:30 p. m.—KHJ Trio and J. Walter Leopold.  
6:30 p. m.—Children's program presenting Nona Clapp, "Sunshine Fairy"; Marjorie Genevieve Lowe, "June Bug"; Dolly Wright, "Dolly of Radioland"; Arthur Stevens, "King Arthur"; Mercedes Marlowe, "Boy Girl," and Clark Paschal, saxophone soloist, accompanied by Le Ella Walmsley, and others.  
8:00 to 10:00 p. m.—Los Angeles Railway Hawaiian Quartet; Mr. and Mrs. Benjamin Sears, old-time fiddlers, and their Husking Bee Dancers, and E. A. Mulford, "Dixie Dan," and others.

Program Published as Submitted by the Station.



## The Catalina Island Swim

One of these sets accompanied Mrs. Margaret Hauser in her swim.  
Several of the swimmers had this set on their pilot boat.



## The Companionable Set

*Light weight—easily handled—can be taken any place.  
Perfect reproduction, selectivity, volume; beautifully designed.  
Will Fit in Any Setting.*

*The Lowest Priced Set of Its Kind on the Market.*

ON DISPLAY IN LOS ANGELES AT

The Ambassador Hotel                      The Biltmore Hotel  
Subway Terminal Waiting Room (between 4th and 5th on Hill St.)  
13 Mercantile Arcade

Distributed by

Johnson Radio Co., 688 Geary Street, San Francisco  
The Radio Studios, 1207 Fourth Ave., Seattle

## KEMPER RADIO LABORATORY

1236 Santee St.

LOS ANGELES

Westmore 2504

Makers of Kemper Ampliphonic Console



**E. J. ALBRIGHT,**  
Announcer

## Hollywood, California—337 Meters

# KNX

750 WATTS—890 KILOCYCLES  
LOS ANGELES EVENING EXPRESS  
Paul G. Hoffman's Studebaker Bldg., 6116 Hollywood  
Blvd., Hollywood. Phone HEMstead 4101  
NAYLOR ROGERS, Manager and Program Director  
GLEN RICE, Asst. Manager.

"The Voice of Hollywood"

### DAILY EXCEPT SUNDAY—

- 8:00 a. m.—Inspirational talk and morning prayer.  
8:15 a. m.—Time signals from Washington, D. C., followed by  
Birthday notices.  
9:00 a. m.—Radio Shopping News, conducted by Carey Preston  
Rittenmeister.  
10:00 a. m.—Town Crier of the Day and his pals.  
10:30 a. m.—Kate Brew Vaughn, Director Household Economics Dept., Evening Express,  
except Friday and Saturday.  
12:00 noon—Magnavox Radio Orchestra, George Redman, director.  
12:30 p. m.—W. F. Alder Travelogue.  
1:30 p. m.—The Book Worm.  
2:00 p. m.—George Redman's Concert Orchestra playing from Leighton's Arcade Cafeteria.  
4:00 p. m.—Lost and Found Column.  
4:55 p. m.—Market reports.  
5:00 to 5:45—"Optimist Daily Message."  
5:45 p. m.—The Town Tattler.  
6:00 to 6:30 p. m.—Biltmore Concert Orchestra.  
6:30 p. m.—Dinner hour concert, presenting the Yale Radio Battery Orchestra.

### WEEK COMMENCING SUNDAY, FEBRUARY 27, 1927

#### SUNDAY, FEBRUARY 27—

- 10:00 a. m.—First Presbyterian Church of Hollywood, Rev. Stewart P. MacLennan.  
2:00 to 4:00 p. m.—City Park Board musical program.  
4:00 p. m.—Roberts Golden State Band.  
5:15 p. m.—All Souls Church.  
6:30 p. m.—First Unitarian Church.  
7:00 p. m.—First Presbyterian Church of Hollywood, Rev. Stewart P. MacLennan.  
8:00 p. m.—Circle Theatre Concert Orchestra and organ recital.  
9:00 p. m.—Feature program.

#### MONDAY, FEBRUARY 28—

- 3:00 p. m.—First Presbyterian Church of Hollywood.  
7:00 p. m.—George J. Birkel Music Co. courtesy program.  
7:30 p. m.—Playlet, courtesy Overell Furniture Company.  
8:00 p. m.—L. W. Stockwell Company courtesy program.  
9:00 p. m.—B. F. Goodrich Rubber Co. of Akron, Ohio.  
10:00 p. m.—KNX Feature Program.  
11:00 p. m.—Hotel Ambassador; Gus Arnheim's Cocoanut Grove Orchestra.

#### TUESDAY, MARCH 1—

- 3:00 p. m.—Combined program of the Police and Fire Departments.  
4:00 p. m.—Radio Matinee with Louise Howatt, contralto.  
7:00 p. m.—Wilshire Ionaco Company.  
8:00 p. m.—Feature program.  
10:00 p. m.—Hotel Ambassador; Gus Arnheim's Cocoanut Grove Orchestra.

#### WEDNESDAY, MARCH 2—

- 3:00 p. m.—Paul Hugon.  
3:30 p. m.—Musical program.  
4:00 p. m.—Edward Murphy in 55 minutes of "What Have You."  
7:00 p. m.—George J. Birkel Music Co. courtesy program.  
7:30 to 10:00 p. m.—Feature programs.  
11:00 p. m.—Hotel Ambassador; Gus Arnheim's Cocoanut Grove Orchestra.

#### THURSDAY, MARCH 3—

- 11:00 a. m.—Nature talk, courtesy Marvel Ant Gelatine Co.  
7:00 p. m.—Carthay Circle Theatre organ recital, courtesy Overell Furniture Co.  
8:00 p. m.—Bert Farrar, Inc., courtesy program.  
9:00 to 11:00 p. m.—Feature program.  
11:00 p. m.—Hotel Ambassador; Gus Arnheim's Cocoanut Grove Orchestra.

#### FRIDAY, MARCH 4—

- 3:00 p. m.—L. A. District Federation of Women's Clubs musical program.  
4:00 p. m.—Boy Scouts' musical program.  
7:00 p. m.—Fitzgerald Music Company.  
7:30 p. m.—Dearden's Furniture Company.  
8:00 p. m.—Davis Perfection Bread Co. courtesy program.  
9:00 p. m.—Feature program.  
10:00 p. m.—Main events from the American Legion Stadium.  
11:00 p. m.—Hotel Ambassador; Gus Arnheim's Cocoanut Grove Orchestra.

#### SATURDAY, MARCH 5—

- 3:00 p. m.—Town Crier of the Day and his Pals.  
7:00 p. m.—Stories of insect life by Harry W. McSpadden.  
7:15 p. m.—Announcement of Sunday services of the leading Los Angeles churches.  
7:30 to 9:00 p. m.—Feature programs.  
10:00 p. m.—Hotel Ambassador; Gus Arnheim's Cocoanut Grove Orchestra.  
11:00 p. m.—KNX Frolic from the main studio.

Program Published as Submitted by the Station.



# ATWATER KENT RADIO

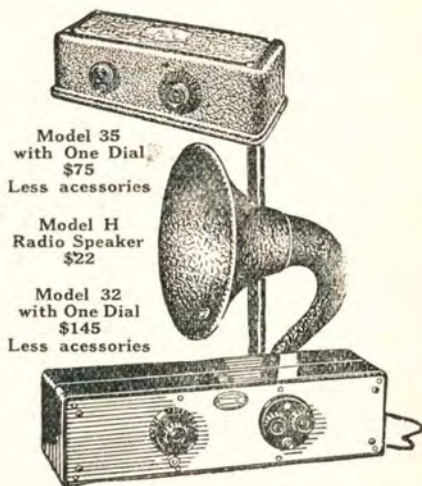
## For Every Need

Atwater Kent Receivers, built in three models, two of which are illustrated here, all have exceptional characteristics which place them on a plane unattained by any other radio at whatever price.

One feature alone, the practical, workable REAL One-Dial Control distinguishes Atwater Kent from all others. Half a turn of the single dial covers the entire broadcast range, each station coming in clearly and sharply without mingling with any other station.

You will never tire of the sensation of "calling the roll," — sampling the programs of each station that's on the air and within range, and turning back to the one of your choice instantly.

Your nearest Atwater Kent Dealer will be glad to have you try any model.



Model 35  
with One Dial  
\$75  
Less accessories

Model H  
Radio Speaker  
\$22

Model 32  
with One Dial  
\$145  
Less accessories

All models can be equipped to operate from a light socket or batteries.

**RAY THOMAS INC.**  
*Atwater Kent Distributor*

1248 S. Hope St. WE 6334  
LOS ANGELES



GERALD L. KING  
Manager

## Hollywood, California—252 Meters

# KFWB

500 WATTS—1190 KILOCYCLES  
WARNER BROS. MOTION PICTURE STUDIOS  
Warner Bros. West Coast Studio, 5842 Sunset Blvd.  
GERALD L. KING, Mgr. WM. RAY, Asst. Mgr.  
Phone GL. 9461  
"Movie Land"

### DAILY EXCEPT SUNDAY—

12:30 to 1:30 p. m.—Classified Hour.  
5:40 to 6:00 p. m.—Beauty Talk.  
6:00 to 7:00 p. m.—Pontiac Six Dinner Hour.  
10:00 to 11:00 p. m.—Musical program from Mayfair Hotel.  
11:00 to 12:00 p. m.—Dance music from El Patio Ballroom.

### MONDAY, TUESDAY AND WEDNESDAY—

5:00 to 5:40 p. m.—Children's Hour.

### WEEK COMMENCING SUNDAY, FEBRUARY 27, 1927

#### SUNDAY, FEBRUARY 27—

2:00 to 3:00 p. m.—Organ recital, from organ in Roosevelt Memorial Park.  
8:30 to 9:00 p. m.—Program by courtesy of the Southern California Music Co.  
9:00 to 11:00 p. m.—Warner Bros. Frolic.

#### MONDAY, FEBRUARY 28—

8:00 to 9:00 p. m.—LeRoy Kullberg, Jackie Lucas, Warner Bros. Dance Orchestra.  
9:00 to 10:00 p. m.—Frank Barry, tenor; Warner Bros. European Novelty Orchestra.

#### TUESDAY, MARCH 1—

4:45 to 5:00 p. m.—Dr. L. P. Clark on "Diet."  
7:00 to 7:30 p. m.—Program by courtesy of the Southern California Music Company.  
7:30 to 8:00 p. m.—Warner Bros. Orchestra.  
8:00 to 9:00 p. m.—Adolph Treusch, popular songs; Georgia Brazell, blues songs; Warner Bros. Orchestra.  
9:00 to 10:00 p. m.—Patrick O'Neil, tenor; Margaret Melrose, soprano; Warner Bros. String Trio.

#### WEDNESDAY, MARCH 2—

7:00 to 7:30 p. m.—Thirty minutes of sunshine by Charles W. Hamp.  
7:30 to 8:00 p. m.—Warner Bros. Orchestra.  
8:00 to 9:00 p. m.—Kenneth Gallum, popular songs; Rutch Michelson, blues songs; Warner Bros. Orchestra.  
9:00 to 10:00 p. m.—Byrle Colby, ballads; Charles Beauchamp, tenor; Warner Bros. String Trio.

#### THURSDAY, MARCH 3—

7:00 to 7:30 p. m.—Program by courtesy of the Southern California Music Company.  
7:30 to 8:00 p. m.—Warner Bros. Orchestra.  
8:00 to 9:00 p. m.—Virginia King, Charlie Cole, Warner Bros. Orchestra.  
9:00 to 10:00 p. m.—Ina Mitchell Butler, ballads; Edwin Sonntag, baritone; Warner Bros. String Trio.

#### FRIDAY, MARCH 4—

7:00 to 7:30 p. m.—Warner Bros. Orchestra; Jack Medford, popular songs.  
7:30 to 8:00 p. m.—Program by courtesy of the La Vina Investment Company.  
8:00 to 9:00 p. m.—Inez King, popular songs; LeRoy Kullberg and his ukulele.  
9:00 to 10:00 p. m.—Melody Makers' Hour; studio chatter at 9:30.

#### SATURDAY MARCH 5—

7:00 to 8:00 p. m.—Carl Dye and his Melody Makers; Harry Monahan, popular songs.  
8:00 to 9:00 p. m.—Program by courtesy of the Mona Motor Oil Company, featuring Julius Phillips, Luella James, Mona Motor Oil Company Trio.  
9:00 to 10:00 p. m.—John Ganton, tenor; Catherine Melville, soprano; Warner Bros. String Trio.

Program Published as Submitted by the Station

## CROSLY SPECIALISTS

PERFECT TONE, SELECTIVITY, STABILITY and DISTANCE

Are the results of our exact balancing. Have your Crosley improved at nominal cost. Satisfaction guaranteed. Open evenings.

## CHILDS LABORATORY

1187 W. 24th St.

BEacon 7445

Los Angeles, Calif.





Type CX-371 Power Tube will carry without distortion 20 times as much volume as the CX-301-A. Can be adapted to any set using 6-volt storage battery. Price \$4.50.



Type CX-112 Power Tube is especially adapted to lower powered receivers where high amplification and not volume capacity is required. Price \$4.50.

## Is Your Radio Set Up-to-date?

There is as much difference between a receiver that has power output equipment and one that lacks it as there is between a clear November morning and a foggy winter night. Power equipment gives your receiver tone quality. Use CX-371 or CX-112 in the last audio stage to feed the loud speaker.

Consult your radio dealer. He will tell you the right combination of Cunningham Radio Tubes for your receiver

INSIST ON

**Cunningham**  
RADIO TUBES

*In the Orange and Blue  
Cartons*



Type CX-300-A Super Sensitive Detector increases the volume equal to that obtained by adding another stage of radio frequency amplification. No change in set construction necessary. Price \$4.00.



Type CX-220 Power Tube for dry cell operated sets, has approximately 4 times the volume of the C or CX-299. Easily adapted to any set. Price \$2.50.

*Cunningham Tube Distributors for Southern California*

# WESTERN RADIO, Inc.

*Distributors of Fine Radio Merchandise Since 1919*

1224 Wall Street

• LOS ANGELES

Westmore

3338

*Ask Your Dealer About Western Radio Classified Tube Service*



G. ALLISON PHELPS  
Manager and Announcer

## Hollywood, California—370.2 Meters

# KMTR

500 WATTS  
KMTR RADIO STATION  
1025 N. Highland Avenue. Telephone HOLLY 3026  
Owned and Operated by C. C. JULIAN  
FORBES W. VAN WHY, Engineer-in-Charge

### DAILY EXCEPT SUNDAY—

- 7:30 to 8:00 a. m.—J. C. Casey in Setting-up Exercises.  
12:00 to 12:30 p. m.—Leighton's Arcade Cafeteria Orchestra.  
12:30 to 1:30 p. m.—Who's Who Program.  
1:30 to 2:30 p. m.—Radio Press Hour.  
2:30 to 3:30 p. m.—Palais de Dance.  
3:30 to 4:00 p. m.—Whispering Jack Don.  
4:00 to 4:15 p. m.—Vacation Days.  
5:00 to 5:30 p. m.—Home Hour.  
5:30 to 6:00 p. m.—White King Male Quartet.  
6:00 to 6:15 p. m.—Nightly Doings.  
6:15 to 7:00 p. m.—Leighton's Arcade Cafeteria Orchestra.  
7:00 to 7:30 p. m.—Musical Program.  
10:00 to 11:00 p. m.—Miller's Lafayette Cafe Orchestra.  
11:00 to 12:00 midnight—Palais de Dance.

### WEEK COMMENCING SUNDAY, FEBRUARY 27, 1927

#### SUNDAY, FEBRUARY 27—

- 5:30 to 6:15 p. m.—White King Male Quartet, courtesy Los Angeles Soap Co.  
6:15 to 6:30 p. m.—Nightly Doings.  
6:30 to 7:00 p. m.—Leila Castberg's Half Hour, "Enlightened Selfishness."  
7:00 to 8:00 p. m.—Miller's Lafayette Cafe Concert Orchestra.  
8:00 to 9:30 p. m.—Concert Period. Jack Cronshaw's Orchestra.

#### MONDAY, FEBRUARY 28—

- 7:30 to 8:00 p. m.—Lavine Investment Company, courtesy program.  
8:00 to 9:00 p. m.—Eureka Vacuum Cleaner Company program.  
9:00 to 10:00 p. m.—Precision Electric Company, courtesy program.

#### TUESDAY, MARCH 1—

- 10:00 to 10:15 a. m.—Fifteen Minutes of Sunshine by Charles Hamp.  
10:45 to 11:00 a. m.—Georgia O. George, "Physiology and Psychology of Beauty."  
11:00 to 12:00 noon—Mme. Alene's Talk.  
7:30 to 8:00 p. m.—Campbell and Ginder courtesy program.  
8:00 to 9:00 p. m.—Maxwell House Coffee Orchestra and assisting artists.  
9:00 to 10:00 p. m.—Courtesy program.

#### WEDNESDAY, MARCH 2—

- 4:30 to 5:00 p. m.—Dr. Wesley M. Barrett, "Perfect Eye-Sight without Glasses."  
8:00 to 9:00 p. m.—Safeway Stores courtesy program.  
9:00 to 10:00 p. m.—Sponsored program.

#### THURSDAY, MARCH 3—

- 10:00 to 10:15 a. m.—Fifteen Minutes of Sunshine by Charles Hamp.  
7:30 to 8:00 p. m.—Winslow B. Felix, Chevrolet courtesy program.  
8:00 to 10:00 p. m.—Ruth Roland night.

#### FRIDAY, MARCH 4—

- 1:00 to 1:30 p. m.—H. L. Copson Body and Top Works courtesy program.  
7:30 to 8:00 p. m.—Thirty Minutes of Sunshine by Charles Hamp.  
8:00 to 9:00 p. m.—Alta Club Ginger Ale program.  
9:00 to 10:00 p. m.—Income Realty and Construction Company courtesy program.

#### SATURDAY, MARCH 5—

- 10:00 to 10:15 a. m.—Charles Hamp, director of Radio activities for the Iona Company.  
7:30 to 7:40 p. m.—Sheriff's Office, Bureau of Public Relations.  
7:40 to 8:00 p. m.—KMRT Movie Club program.  
8:00 to 10:00 p. m.—Campbell & Ginder courtesy program.

*Program Published as Submitted by the Station.*

## SHEPHERD RADIO SERVICE

Authorized Dealer for

### Stromberg-Carlson, Federal Ortho-Sonic Receiving Sets

We specialize in correcting balky receivers. Super-Heterodynes, Infradynes, Roberts, etc., made to perform efficiently.

Transformers Matched, Coils Balanced

Phone Us Your Troubles. Our Service Will Please

Batteries Changed, Tubes Reactivated. Work Called for and Delivered

**GRanite 7482**

7562 Sunset Boulevard

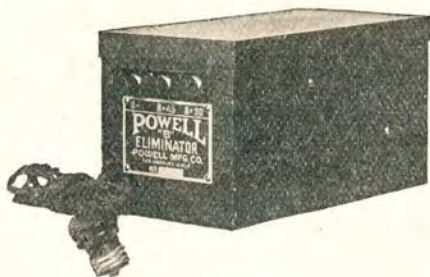
Hollywood, California



# *Selling Like Hot Cakes*

## The Powell 'B' Eliminator

Uncondition-  
ally  
Guaranteed



**\$12<sup>25</sup>**

**Absolutely No Hum**

Operates any set from light socket without the use of expensive and troublesome "B" batteries. A large surplus of power at 100 volts and at a cost of only a few cents a year.

**MORE VOLUME - - MORE DISTANCE**  
**GREATER SATISFACTION**  
**BETTER QUALITY - - BETTER PRICE**

**No Tubes, No Acid and Nothing Else to Buy**

*A ten-day trial with absolute satisfaction or money back*

### GUARANTEE

This instrument is the result of months of experimenting and exhaustive tests. The best of materials and workmanship have been combined to insure its satisfaction with the user and it is guaranteed unconditionally for one year. If for any reason it fails to perform satisfactorily it should be returned to the seller, who is instructed to repair or replace, free of charge.

Call or Telephone VERmont 1619 for Information

**Powell Manufacturing Co.**

4009 S. Western Ave.

Los Angeles, Calif.



M. E. CARRIER  
Announcer

## Los Angeles, California—294 Meters

# KTBI

750 WATTS—1020 KILOCYCLES  
BIBLE INSTITUTE OF LOS ANGELES

MR. M. E. CARRIER, Manager  
PROF. H. G. TOVEY, Director of Programs  
Phone ME. 6701

### DAILY EXCEPT SUNDAY—

8:45 to 9:15 a. m.—Devotional Hour.  
2:00 to 3:00 p. m.—Inspirational Hour.

### DAILY EXCEPT FRIDAY AND SUNDAY—

7:15 to 8:00 p. m.—Aunt Martha's Children's Hour.

### WEEK COMMENCING SUNDAY, FEBRUARY 27, 1927

#### SUNDAY, FEBRUARY 27—

10:45 a. m. to 12:30 p. m.—Regular service of the Church of the Open Door.  
3:00 to 4:00 p. m.—Jewish Radio Hour. Rev. David L. Cooper and assistants.  
6:00 to 7:00 p. m.—Radio Vesper Service. Sermon by Dr. Ralph Atkinson.  
7:15 to 9:30 p. m.—Regular evening service of the Church of the Open Door.

#### MONDAY, FEBRUARY 28—

8:00 to 9:00 p. m.—Bible exposition by Dr. W. E. McCulloch.

#### TUESDAY, MARCH 1—

8:00 to 9:00 p. m.—Bible exposition by Dr. W. E. McCulloch.

#### WEDNESDAY, MARCH 2—

9:15 to 9:45 a. m.—Sylvia's Rainbow Hour.  
8:00 to 9:00 p. m.—Bible exposition by Dr. John McNeill.

#### THURSDAY, MARCH 3—

8:00 to 9:00 p. m.—Bible exposition by Dr. W. E. McCulloch.

#### FRIDAY, MARCH 4—

9:15 to 9:45 a. m.—Sylvia's Rainbow Hour.  
6:15 to 7:00 p. m.—Aunt Martha's Children's Hour.  
7:00 to 8:00 p. m.—Exposition of International Sunday School lesson by Rev. Hubbard.  
8:00 to 9:00 p. m.—Bible exposition by Dr. John McNeill.

*Program Published as Submitted by the Station.*

## Los Angeles, California—275.1 Meters

# KFSG

500 WATTS—1090 KILOCYCLES  
ANGELUS TEMPLE, ECHO PARK. Phone DR. 2560  
AIMEE SEMPLE McPHERSON, Founder, President  
ESSIE BINKLEY, Program Manager  
ESTHER FRICKE GREENE, Organist  
GLADWYN N. NICHOLS, Musical Director & Announcer  
"Four Square Gospel"

### DAILY EXCEPT SUNDAY AND MONDAY—

10:30 to 11:30 a. m.—Sunshine Hour.  
11:30 a. m. to 12:30 p. m.—Noonday Musical.  
6:30 to 7:30 p. m.—Angelus Hour.

### DAILY EXCEPT SUNDAY, MONDAY, WEDNESDAY, SATURDAY—

2:30 to 3:30 p. m.—Gray Studio Program.

#### SUNDAY, FEBRUARY 27—

10:30 to 12:30 p. m.—Sunday morning worship, Evangelist A. G. Garr.  
2:30 to 4:30 p. m.—Afternoon Dispensational service by A. G. Garr.  
6:30 to 8:00 p. m.—Musical Hour. Angelus Temple Band and Choir.  
8:00 to 9:00 p. m.—Revival service by A. G. Garr.  
10:00 to 11:00 p. m.—Organ recital by Esther Fricke Greene.

#### TUESDAY, MARCH 1—

3:30 to 4:30 p. m.—Vesper Hour. Organ recital by B. Earnest Ballard.  
7:30 to 9:30 p. m.—Evangelistic service by student evangelists.

#### THURSDAY, MARCH 3—

2:30 to 5:30 p. m.—Divine Healing Service by A. G. Garr.  
7:30 to 9:30 p. m.—Regular mid-week prayer service by A. G. Garr.

#### WEDNESDAY, MARCH 2—

3:30 to 4:30 p. m.—Vesper Hour. Organ recital by B. Earnest Ballard.  
7:30 to 9:30 p. m.—Regular Water Baptismal service. A. G. Garr.  
9:15 to 10:00 p. m.—Gray Studio Program.

10:00 to 11:00 p. m.—Organ recital by Esther Fricke Greene.

#### FRIDAY, MARCH 4—

3:30 to 4:30 p. m.—Vesper Hour. Organ recital by Esther Fricke Greene.  
7:30 to 9:30 p. m.—Crusader Rally. Sermon by A. G. Garr.  
10:00 to 11:00 p. m.—Back Home Hour.

#### SATURDAY, MARCH 5—

3:30 to 4:30 p. m.—The Children's Happy Hour.  
7:30 to 9:30 p. m.—Divine Healing Service, conducted by A. G. Garr.

*Program Published as Submitted by the Station.*



# Mohawk Radio

One  Dial

## THE PIONEER ONE-DIAL SET

Any of the following dealers will be glad to demonstrate a set for you. Once demonstrated, you will buy.

### LOS ANGELES

R. C. Larkin  
4285 Beverly Blvd.  
Mohawk Battery & Radio  
2115 Sunset Blvd.  
L. A. Duncan  
2891 West Pico  
Bob Brown  
4353 South Figueroa St.  
Monarch Radio Company  
2189 W. Washington Blvd.  
L & Y Electric Co.  
8864 West Pico  
Normandie Radio  
5069 Hollywood Blvd  
Barney Campbell  
8210 Sunset Blvd.  
Top Notch Radio  
747 S. Main St.  
ANAHEIM, Schmidt Music Co.  
217 West Center  
GLENDALE—Alexander Radio  
Shop, 216 North Brand  
WHITTIER, H. D. Squires  
218 South Greenleaf  
LONG BEACH, R. W. Haynes  
137 East Fourth  
CARLSBAD, Standard Garage  
WILMINGTON—Kelm Radio  
SANTA PAULA—Kit Carson  
ONTARIO—Davis Electric Co.

### SAN DIEGO

Nelson Radio  
Fains Radio Shop  
FILLMORE, M. D. Basolo

SOLANO BEACH, I. E. Connor  
CALEXICO, City Electric Co.  
313 Second St.

INDEPENDENCE, Sterling Bros.  
Garage

BISHOP, Exide Battery Shop  
SAN CLEMENTE, San Clemente  
Electric Shop

LONE PINE, James G. Ducker  
MONROVIA, J. H. Terry  
416 South Myrtle

MONTEREY PARK—O'Neal's Ra-  
dio & Bicycle Shop, 2033 South  
Garfield Ave.

SANTA BARBARA, Channel Elec-  
tric Co., 523 Anacapa St.

SANTA PAULA, Kit Carson  
SANTA MONICA Bay Dist. Dealer,  
Warren Radio Shop, 1548 17th St.

SEAL BEACH, D. W. Collier  
321 Main St.

LOMITA, Calkins Hdwe. Co.  
TORRANCE, De Bra Radio Co.

BELLFLOWER, S. E. Moore  
617 Somerset St.

SAN PEDRO, Journey Electric Co.  
380 Sixth St.

### PASADENA

Lee Radio  
922 E. Colorado  
Wilson Music Co.  
180 E. Colorado  
Radio Doc  
1581 Walnut St.

# COOK-NICHOLS CO.

411 S. San Pedro St.  
Los Angeles, Cal.

482 S. Fair Oaks Ave.  
Pasadena, Cal.



Dave Ward

## Hollywood, California—226 Meters

# KFQZ

1641 North Argyle Ave., Hollywood, California  
 GLadstone 3197; GLadstone 3198  
 DAVE WARD, Program Director and Announcer  
 L. E. TAFT, Technical Engineer  
 "The Palace Bungalow Studio"

### DAILY EXCEPT SUNDAY—

12:00 to 1:00 p. m.—Los Angeles Merchants' and Manufacturers' Hour.

6:00 to 7:00 p. m.—Musical Hour.

### WEEK COMMENCING SUNDAY, FEBRUARY 27, 1927

#### SUNDAY, FEBRUARY 27—

8:00 p. m.—Aram Galanian's Orchestra and Al Flanigan, soloist.

9:00 p. m.—Dave Ward and his Yellow Jackets; Virginia King, accompanied by Mable King; Joe Hawley, and Al Ybarra.

#### MONDAY, FEBRUARY 28—

7:30 p. m.—Joe Kalih'i's Hawaiian Trio, and Kathrine Williamson.

8:00 p. m.—Semi-classical Hour by Myra Belle Vickers.

9:0 to 11:000 p. m.—Dave Ward and his Yellow Jackets; L. A. Railway Quartet.

#### TUESDAY, MARCH 1—

7:00 p. m.—Warren Peterson and Bud Overbeck.

7:30 p. m.—Wilshire Ionico lecture.

8:00 p. m.—Rebroadcast of eastern station.

9:00 p. m.—Police and Fire Joint program, Officer Robt. F. Tracy.

#### WEDNESDAY, MARCH 2—

7:00 p. m.—Dr. Rudolph H. Gerber.

7:30 p. m.—Ed Pose and Helen Boyd.

8:00 p. m.—Redel's Orchestra and Art Goodstein.

9:00 p. m.—Dave Ward and his Yellow Jockets, Honeywell Twins, Helen McColl and Virginia King accompanied by Mable King.

#### THURSDAY, MARCH 3—

7:00 p. m.—Questions and answers by L. E. Taft.

7:30 p. m.—Jack Martin's Hawaiian Trio and Ruth Raynor.

8:00 p. m.—Bob Buckner's Sole Killers and Ned Miller.

9:00 p. m.—Los Angeles Railway Orchestra, Ruth Michelson and Royal Wallace.

#### FRIDAY, MARCH 4—

7:00 p. m.—Hott Gibson's Hawaiian Trio and Hale Hooper.

7:30 p. m.—Wilshire Ionico lecture.

8:00 p. m.—Paramount Six Dance Orchestra, Dot Jordan and Glenda Boston.

9:00 p. m.—Dave Ward and his Yellow Jackets, Pot Lee and Helen McColl.

#### SATURDAY MARCH 5—

12:00 noon—Paris Inn Cafe Orchestra and Bert Roverre, soloist.

7:00 p. m.—Joey Starr Dance Orchestra and Dick Powers.

8:00 p. m.—Eddie Mills and his 1/4 String of Harmony.

9:00 p. m.—Dave Ward and his Yellow Jackets, Bud Riley, Don Stevens and Joie Lee.

Signing off nightly at 11 p. m.

*Program Published as Submitted by the Station*



E. C. Huekabee  
Announcer

## Los Angeles, Calif.—517 Meters

# KGEF

1000 WATTS—580 KILOCYCLES  
 TRINITY METHODIST CHURCH  
 BOB SHULER, Pastor  
 Phone BRoadway 1000  
 C. C. HOOPER, Manager  
 M. J. HANKINS, Technician

### SUNDAYS—

10:50 a. m. to 12:15 p. m.—Morning services.

5:00 to 6:00 p. m.—Vesper hour.

7:15 to 9:00 p. m.—Evening services.

9:00 to 10:00 p. m.—Old Hymns Songfest.

10:00 p. m.—Family Altar service.

### WEDNESDAYS—

6:00 to 7:00 p. m.—Children's hour.

7:00 to 7:45 p. m.—Conrey's Bible Class.

7:45 to 8:30 p. m.—Studio musical program.

8:30 to 9:15 p. m.—Question Hour.

### FRIDAYS—

7:00 to 7:30 p. m.—Radio Bible Class.

7:30 to 8:00 p. m.—Studio musical program.

8:00 to 8:30 p. m.—Civic half hour.

8:30 to 9:30 p. m.—Southern California Holiness Association.

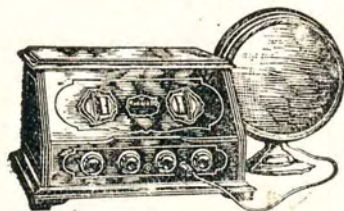
*Program published as submitted by the station.*



# RCA Radiola

*plus*

our expert  
**SERVICE**



RCA  
Loudspeaker  
100  
\$35.00



RADIOLA 20 gives you the tone quality and performance of a high priced set for only \$78. (Less Equipment)

It has a power tube—for volume. It has single control—for simplicity. It is sensitive—for distance. And with all the new features of radio, it is not a new experiment, but a proved and perfected product of RCA.

Hear it, at our store, in competition with any others' or let us bring it to your home.

Phone TRinity 0746 for Appointment  
in Your Home

**Eastman Kodak Stores, Inc.**

510 South Broadway

Los Angeles, Calif.



GEORGE FRENGER  
Announcer

## Pasadena, California—315.6 Meters

# KPSN

PASADENA STAR-NEWS  
1000 WATTS—950 KILOCYCLES  
GEORGE CECIL COWING, Managing Director  
GEORGE FRENGER, Program Manager  
HERSHEL SATTERFIELD, Engineer-in-Charge  
PERCY C. PRYOK, Studio Office  
Phone, Wakefield 3111

### DAILY EXCEPT SUNDAY—

12:00 to 12:15 p. m.—News Bulletin.

6:00 to 7:00 p. m.—Dinner-time news report.

WEEK COMMENCING SUNDAY, FEBRUARY 27, 1927

#### SUNDAY, FEBRUARY 27—

10:30 a. m.—Family Altar Service by the United Church Brotherhoods.

11:00 a. m.—Services from the Pasadena Presbyterian Church.

6:00 to 7:00 p. m.—Star-News concert, with Adolf Tandler and the Ensemble.

#### MONDAY, FEBRUARY 28—

8:00 to 9:15 p. m.—Star-News concert, with Adolf Tandler and the Ensemble.

#### TUESDAY, MARCH 1—

8:00 to 9:15 p. m.—Star-News concert, with Adolf Tandler and the Ensemble.

#### THURSDAY, MARCH 3—

8:00 to 9:15 p. m.—Star-News concert, with Adolf Tandler and the Ensemble.

#### FRIDAY, MARCH 4—

8:00 to 9:15 p. m.—Star-News concert, with Adolf Tandler and the Ensemble.

#### SATURDAY, MARCH 5—

8:00 to 9:15 p. m.—Star-News concert, with Adolf Tandler and the Ensemble.

*Program Published as Submitted by the Station.*

## \$1 Down—

Will Place a

## Majestic "B"

Current Supply in Your Home  
then \$1 a week

CABINETS

## \$1<sup>95</sup>

Trickle Chargers . . . . . \$7.50  
\$10 Higrade Cabinets . . . . . 3.95  
\$1.65 Vernier Dials . . . . . .79

WE HAVE GEN WIN "RB" LAB. COILS IN STOCK—Also GOSILCO SUPER AERIAL

"RADIO KIT HEADQUARTERS"

ESTAB. 1904

625 So. Main  
Opposite  
P. E. Depot

# J. C. RENDLER

TRinity 4281  
Los Angeles

OPEN EVENINGS

"THE RADIO CENTER"

MAIL ORDERS

## \$5 Down—

Will Place a

## Philco "A and B"

Current Supply in Your Home  
then \$6 a month

CABINETS

## \$1<sup>95</sup>

6-Volt 100 A. H. Stor. Batt. . . \$7.75  
\$10 Brandes Phono Unit . . . . . 4.95  
Cunningham "A" Tubes, Now 1.75

Highly Polished — Low Prices  
\$4 BRANDES  
AUDIO TRANSFORMERS



# YOUR NEIGHBORHOOD DEALER

FEDERAL AND RADIOLA

BOSCH AND BREMER TULLY



and **FEDERAL  
Ortho-Sonic**

Two Ways of Saying  
"Radio At Its Best"

**HETZEL RADIO  
SERVICE**

"Hetzels Radios Excel"  
8303 Santa Monica Blvd.  
Phone GRanite 5874

All Models  
**COUNTERPHASE**  
and  
**BOSCH**

**H. A. Everest**  
1032 North Ogden Drive  
Nightly Demonstrations  
GRanite 9915

SEE PAGE 5 FOR IMPORTANT PRIZE ANNOUNCEMENT

## McKinley Junior "B" Battery Eliminator

Guaranteed  
Satisfaction!

No Tubes to  
Blow Out

No Acid



**\$9.75**  
Complete

Will Operate Any  
Radio Up to  
Six Tubes  
90 to 100 Volts

Same Quality as the McKinley "B" Power Unit

### OUR GUARANTEE

If this "B" Eliminator fails to perform satisfactory within a period of one year, replacement or repairs will be cheerfully made.

Other Eliminators, \$20 to \$35

Send Check or Money Order or \$1.00 and we will ship C. O. D.  
Mail Orders Given Immediate Attention

**McKINLEY RADIO MFG. CO.**

10905 S. Main St.

Phone YORk 1828

Los Angeles

# The Falck

## NO-BATTERY RADIO

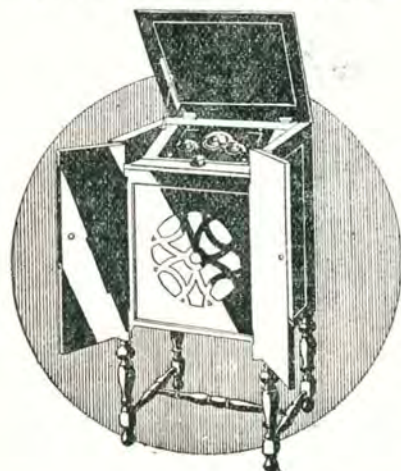
FOR  
TONE  
BEAUTY  
ECONOMY  
SIMPLICITY  
SELECTIVITY  
PERMANENCE

IN THE new Falck No-Battery Radio you will find features found only in sets at twice the price. Equipped with the famous 48-inch Golden Bear tone chamber, the tone of the Falck satisfies the most critical ear. And no batteries or chargers of any kind! Ask to hear the Falck at any authorized Falck dealer, or phone Mutual 1724 for free demonstration in your home.

FALCK RADIO SALES CO.

\$150 complete, no extras

1262 W. 2nd St. Los Angeles



## 5 Tube Falck



*Beautiful  
Mahogany  
Console*

Plug in your light socket as you would your electric iron. No batteries, no acid, no muss, no fuss. Operates without aerial. One dial control. Something everybody wants, at a low cost. Cash credit for your old set.

Phone VE. 9589

For Home  
Demonstration

EASY TIME PAYMENTS

# FLETCHER

## RADIO MUSIC CO.

4705 S. Vermont Ave. VE. 9589  
Los Angeles





JACK DUCKWORTH  
Announcer

## Inglewood, California—387 Meters

# KMIC

500 WATTS—775 KILOCYCLES

Owned and Operated by JAMES R. FOUCH  
Chamber of Commerce Building, Inglewood, Cal.  
JACK DUCKWORTH, Announcer

DAILY EXCEPT SUNDAY—

6:00 to 6:30 p. m.—Shoppings news, with Victor Electrola Review

WEEK COMMENCING SUNDAY, FEBRUARY 27, 1927

SUNDAY, FEBRUARY 27—

11:00 a. m. to 12:15 p. m.—Centinella Baptist Church.

MONDAY, FEBRUARY 28—

6:30 to 7:00 p. m.—Martin Wallace Orchestra Request program.

7:00 to 8:00 p. m.—Lambert Sales Company Courtesy Program.

8:00 to 9:00 p. m.—City of Inglewood Courtesy Program.

9:00 to 9:30 p. m.—Geo. M. Sutton Courtesy Program. KMIC Trio, Louise White, soprano; Nell Larson, piano; Don Miner, tenor.

9:30 to 10:00 p. m.—Studio Program.

TUESDAY, MARCH 1—

6:30 to 6:45 p. m.—California Health Chatauqua, care of the body.

6:45 to 7:00 p. m.—Skinner Mfg. Co., Courtesy Program.

7:00 to 7:30 p. m.—Studio Program.

7:30 to 8:00 p. m.—Reliable Radio Sales & Service Co., Courtesy Program.

8:00 to 10:00 p. m.—Wes. Woodford and His Bachelor Four, request program.

WEDNESDAY, MARCH 2—

6:30 to 7:30 p. m.—Martin Wallace Orchestra.

7:30 to 8:00 p. m.—Ross O. Porter Tire Company, Courtesy Program.

8:00 to 10:00 p. m.—L. A. Ry. String Quartette. Morris Sisters, Harmony Numbers, Sherman Hunter, tenor; Louise White, soprano.

THURSDAY, MARCH 3—

6:30 to 7:00 p. m.—Gordon Garrett, classic pianist.

7:00 to 7:30 p. m.—Malloy Clint, Courtesy Program.

7:30 to 8:00 p. m.—Inglewood Furniture Company, Courtesy Program.

8:00 to 10:00 p. m.—Wes. Woodford and His Bachelor. Evie and Peggy, harmony numbers, Fred Wesley, blues; Don Minor, tenor.

FRIDAY, MARCH, 4—

6:30 to 7:30 p. m.—Studio Program.

7:30 to 8:00 p. m.—Skinner Mfg. Co., Courtesy Program, featuring Lempke's Radio Boys.

8:00 to 10:00 p. m.—Studio Program, with Sherman Hunter, tenor; Louise White, soprano; Morris Sisters, harmony; Lempke's Radio Boys and others.

10:00 to 12:00 p. m.—American Legion Frolic.

SATURDAY, MARCH 5—

6:30 to 7:00 p. m.—Gordon Garrett Classic Pianist.

7:00 to 8:00 p. m.—Martin Wallace Orchestra.

8:00 to 10:00 p. m.—Bill Livingston and His Radio Boys.

*Program Published as Submitted by the Station.*



## COMPLETE RCA LINE ON DISPLAY

For Radio Service on All Makes

Call TRinity 2914



24  
Years In  
Business

NEWBERY ELECTRIC CORP.

726 South Olive St.

Los Angeles, Cal.



For Sets, Accessories and  
**SERVICE**



on

# RCA-Radiola

MADE BY THE MAKERS OF RADIOTRONS

You Can Depend Upon These Authorized RCA Dealers:

## LOS ANGELES

### Beverly Hills

CRAWFORD'S RADIO-MUSIC  
445 Beverly Drive  
OXford 6801

### Hollywood

CRAIG RADIO SERVICE  
7022 Melrose Ave.  
Whitney 7312

HOLLYWOOD MUSIC Co.  
6019 Hollywood Blvd.  
Hollywood 0364

### Lincoln Heights

FRANK GRAVES SASH, DOOR  
& MILL Co., HDW. DEPT.  
2012 Pasadena Ave.  
CApitol 2071

### Southwest

BOULEVARD FURNITURE Co.  
1574 W. Washington, at  
Vermont  
BEacon 0722

C & G ELECTRIC & RADIO  
Co.

1501 W. Santa Barbara,  
at Dalton

Vermont 5205

L. A. DUNCAN  
2891 W. Pico St.  
EMpire 1141

FLETCHER RADIO MUSIC Co.  
4705 S. Vermont Ave.  
VERmont 9589

### Highland Park

HOLLAND ELECTRIC SHOP  
5632 Pasadena Ave.  
GARfield 3912

### Hollenbeck Heights

PHONOGRAPH REPAIR SHOP  
(N. E. Worobieff)  
1826 E. First St.  
ANGelus 6349

### Southeast

CENTRAL ELECTRIC Co.  
3802 Central Ave.  
HUMbolt 2337

### Wilshire

WOLFE RADIO Co.  
543 S. Western  
WASHington 5711

### Downtown

THE ELECTRICAL APPLI-  
ANCE SHOP  
336 S. Broadway  
TUCKer 2932

HARRY W. HARRISON  
848 S. Flower St.  
TRinity 9777

MARTIN MUSIC Co.  
734 S. Hill St.  
TRinity 9621

### ALHAMBRA

FRED B. GILLENWATER  
RADIO STUDIO  
127 W. Main St.  
Alhambra 2032

### BELL

BAKER AVE. ELECTRIC Co.  
910 Baker Ave.  
DElaware 1871

### EAGLE ROCK

EAGLE ROCK MUSIC Co.  
2144 Colorado Blvd.  
ALbany 4315

### GLENDALE

GLENDALE MUSIC Co.  
(Salmacia Bros.)  
118 S. Brand Blvd.  
Glendale 90

J. A. NEWTON ELECTRIC  
Co.  
154 S. Brand Blvd.  
Glendale 240

"Buy With  
Confidence



Where You See  
This Sign"





**TOM MITCHELL**  
Announcer

## Santa Monica, California — 238 Meters

# KNRC

1000 WATTS CAPACITY  
Owned and Operated by KEIRULFF & RAVENS-  
CROFT COMPANY,  
Municipal Auditorium, Ocean Park, Santa Monica,  
Calif. Phone Santa Monica 63-101.  
TOM MITCHELL, Studio Manager and Announcer.  
C. B. JUNEAU, Transmission Engineer.  
*"The Station with a Smile"*

### DAILY EXCEPT SUNDAY—

6:00 to 7:00 p. m.—Club Casa Del Mar organ recital. Remote control.  
7:00 p. m.—Merchants Review.  
10:00 to 11:00 p. m.—Club Casa Del Mar Orchestra. Remote control.  
11:00 to 12:00 p. m.—La Monica Ball Room Orchestra.

### DAILY EXCEPT MONDAY—

8:00 to 9:00 p. m.—Band Concert.  
11:30 p. m.—Band Concert.

WEEK COMMENCING MONDAY, FEBRUARY 28, 1927

#### MONDAY, FEBRUARY 28—

4:15 p. m.—Brother Tom and Smiling Circle.  
8:00 to 10:00 p. m.—Lee Young Jr. and his Gables Club Orchestra, Smiling Harvey Porter, Dorothy and Dawn Smith.

#### TUESDAY, MARCH 1—

4:15 p. m.—Brother Tom and his Smiling Circle.  
9:00 p. m.—Sherman Hunter, tenor; Georgia Williams Trio.

#### WEDNESDAY, MARCH 2—

4:15 p. m.—Smiling Circle with Brother Tom.  
9:00 p. m.—Pirate Band, Albert Broad, tenor.

#### THURSDAY, MARCH 3—

4:00 p. m.—Brother Tom and his Smiling Circle.  
9:00 p. m.—Red Wyatt, Golda Anderson Trio, Margaret Bechtel, Erma Reed.  
10:00 p. m.—Club Casa del Mar Orchestra, by remote control through KNRC.

#### FRIDAY, MARCH 4—

4:00 p. m.—Brother Tom and his Smiling Circle.  
9:00 p. m.—Los Angeles Railway String Quartet and Band.

#### SATURDAY, MARCH 5—

4:00 p. m.—Brother Tom and his Smiling Circle.  
9:00 p. m.—K and R Program.  
11:00 p. m.—Gables Club Orchestra by remote control.  
12:00 noon—La Monica Orchestra.

#### SUNDAY, MARCH 6—

10:45 p. m.—Pilgrim Lutheran Church services by remote control through KNRC.  
5:15 p. m.—The Pirate Band.  
8:15 p. m.—Pilgrim Lutheran Church service.  
7:00 p. m.—Club Casa del Mar Organ Recital.  
8:00 p. m.—Municipal Band Concert.  
9:00 p. m.—Club Casa del Mar Recital.  
10:00 p. m.—La Monica Ball Room Orchestra.

*Program Published as Submitted by the Station.*

## STANDARD RADIO CO.

417 West Pico Street, Los Angeles, Calif.

## FADA, ATWATER KENT AND WESTERN ELECTRIC DEALER

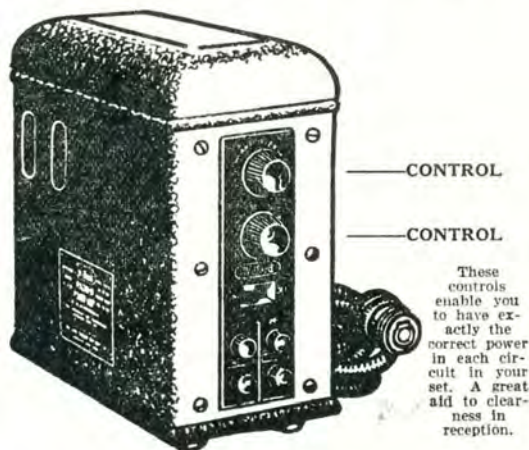
We Carry a Complete Line

Open Model Atwater Kent Wave Length Cut Down to 200 Meters.  
We Are Also Making a Specialty of Sharpening Tuning in Any Radio Set  
2-Tube Harkness Changed to 3-Tube, Guaranteed Perfect Tune-Out on  
Local Stations

Telephone Westmore 1560

Open Evenings Until 9 o'Clock

# This Willard POWER UNIT



These controls enable you to have exactly the correct power in each circuit in your set. A great aid to clearness in reception.

You can have up to 160 volts of "B" power with this unit, and it is as handy as turning on a light. Price only \$35.74.

There is a Willard "A" Power Unit also. Given you plenty of "A" power all the time.

You cannot afford to equip your set with power supply without first investigating these Willard products.

---

**The WILLARD BATTERY MEN**  
*of Southern California*

90 Service Stations in Los Angeles—and one or more in other towns and cities. There is one near you.





Leo T. Cleary  
Announcer

## Venice, California—205 Meters

# KFVD

500 WATTS  
McWHINNIE ELECTRIC CO., Venice Ballroom,  
Venice Calif. Phone 65959 or 65950  
Station Manager, W. H. WHITE.

WEEK COMMENCING SUNDAY, FEBRUARY 27, 1927

SUNDAY, FEBRUARY 27—

10:00 to 12:00 midnight—Venice Ballroom Orchestra.

MONDAY, FEBRUARY 28—

8:30 to 9:00 p. m.—Harry Dinowitz, violinist; George Thiroux, ukulele artist.

9:00 to 10:00 p. m.—Melba Lyon, KFDV girl, and others.

10:00 to 12:00 p. m.—The Venice Ballroom Orchestra, followed by The Ship Cafe Frolic.

8:00 to 10:00 p. m.—Studio Program, featuring Dale Fulton, violinist; Lila Fulton, piano; Gee Thiroux, popular songster; Roy Davis, whistler; Fred Wesley, tenor, and others.

TUESDAY, MARCH 1—

8:00 to 10:00 p. m.—Studio Program; Harry Dinowitz, violinist; Virginia Reese, Pianist; the Zerich Family Orchestra; Mr. Henning Banjo Orchestra.

WEDNESDAY, MARCH 2—

8:00 to 10:00 p. m.—Jack Pope's Californians; Gee Thiroux, tenor; Elizabeth Swan, piano; Eddie Mills, 14 strings of Harmony; Bob Davis, baritone.

THURSDAY, MARCH 3—

8:00 to 10:00 p. m.—Miss Usher, astrologer; The Ancient Trio, their combined ages, 243 years; Geraldine Gordon, female baritone; Art Forbes and his Black Cat Syncopaters.

FRIDAY, MARCH 4—

8:00 to 10:00 p. m.—Claude Bond, piano and accordian; Morris Lenksy, Russian baritone; Dr. Delivante, pianist; Louis Lucich, Slavonian tenor; Bessie Fletcher, soprano, and the Californian Colonials Band.

SATURDAY, MARCH 5—

8:00 to 10:00 p. m.—Eddie Mills' 14 Strings of Harmony; St. Elmo Russell, piano accordian. Program by the Bureau of Public Safety of the Los Angeles Police Department.

1:00 to 2:00 a. m.—Harry Judson Entertainers' Hour.

*Program Published as Submitted by the Station.*



Major Lawrence Mott  
Announcer

## Avalon, California—211.1 Meters

# KFWO

THE ISLAND STATION  
Power 250 Watts—Western Electric Equipment  
"Katalina for Wonderful Outings"  
MAJOR LAWRENCE MOTT, Owner-Operator  
MISS FRANCES HEWITT, Studio & Program Dir.  
"The Isle With a Smile"

WINTER SCHEDULES AT KFWO

The Mott Station at Catalina Island, California  
(In Effect Week of Sept. 20th)

DAILY EXCEPT MONDAY—

12:30 to 1:30—Hotel St. Catherine Orchestra.

6:30 to 8:00—St. Catherine Orchestra.

DAILY EXCEPT MONDAY, THURSDAY AND SUNDAY—

6:00 to 6:30—Studio.

MONDAYS: Silent.

TUESDAYS: 5:00 to 6:00—Miss Hewitt's Golden Hour.  
6:00 to 8:00—Studio.

WEDNESDAYS: 8:00 to 9:00—Studio Program.  
9:00 to 12:00 Midnight—Overseas.

THURSDAYS: 8:00 to 9:00—Studio Program.

FRIDAYS: 5:00 to 6:00—Miss Hewitt's Golden Hour.  
6:00 to 6:30—Wrigley Chimes.

SATURDAYS: 3:00 to 4:30—Rebroadcast of KNX.  
9:15 to 10:00—Studio.

SUNDAYS: 5:00 to 6:00—Miss Hewitt's Golden Hour.  
6:00 to 6:30—Wrigley Chimes.  
8:00 to 9:15—Lobby Concert.

*Victor Electrola used during all programs.*

*Program Published as Submitted by the Station.*

# 290 Stations!

Japan - Australia - New Zealand

By Using a

Use this Radio Power Box one week on your Radiola Semi-portable 24, 26 and 28, and other types of super-heterodynes, then if you are not satisfied, return box and the purchase price will be refunded.



This model built for Radiola and other types of Super-Heterodynes.

Now \$6.00

MODEL NO. 24

## RADIO POWER BOX

Results Guaranteed

Paso Robles, Calif., Jan. 30th, 1927.

SAN TEE CO.

Dear Sirs:

About three weeks ago I sent for one of your No. 24 Power Boxes, with which I am more than satisfied.

Last night I brought in JOAK, Japan, and 5CL and 2BL, Australia, on LOUD SPEAKER. I also have other Japanese and Australian stations other than these, and, too, I have had New Zealand. In Canada, Mexico and the United States I have had 290 stations. One 15-watt in San Antonio, Texas, 10-watt in Seattle and 5-watt in Stockton. I am using a No. 28 Radiola with loop aerial and your booster No. 24 with about 140 feet of No. 14 stranded wire running south for aerial. My ground is six feet of two-inch pipe driven in ground and heavy insulated wire soldered to it, and leads to booster which sits over No. 1 tube, first detector.

406 Sixteenth Street.

Sincerely,

ELLIOTT KIRKPATRICK.

Immediate Attention Given Mail Orders

### THE SANTEE CO.

216 Calo Building  
443 S. San Pedro St.

Telephone TUCKER 4951  
Los Angeles, Calif.





"HAL" G. NICHOLS  
Announcer

## Long Beach, California—233 Meters

# KFON

1280 KILOCYCLES—750 WATTS  
NICHOLS & WARRINER, INC.  
Studio 211 Jergins Trust Bldg. Phones 617-19, 614-60  
Business Office, 212 Jergins Trust Bldg.  
Phones: 617-19, 614-60  
HAL G. NICHOLS, Manager and Studio Director  
"Where Your Ship Comes In"

### DAILY EXCEPT SUNDAY—

- 10:15 to 10:30 a. m.—"Devotion Period."
- 10:30 to 11:30 a. m.—Physiology of Beauty, Georgia O. Gearge.
- 11:30 a. m. to 12:00 noon—Press-Telegram news.
- 12:00 noon—Lost and found announcements.
- 4:00 to 4:30 p. m.—Press-Telegram Late News.
- 4:30 to 6:00 p. m.—KFON Concert Orchestra.
- 6:00 to 6:15 p. m.—Request program.
- 6:15 to 7:00 p. m.—KFON Concert Orchestra.

### DAILY EXCEPT MONDAY—

- 2:30 to 4:00 p. m.—Municipal Band Concert.

### DAILY EXCEPT SUNDAY AND MONDAY—

- 7:30 to 9:00 p. m.—Municipal Band and studio programs.

### SUNDAY, FEBRUARY 27—

- 11:00 a. m. to 12:30 p. m.—Church of the Nazarene, Rev. L. A. Reed.
- 1:30 to 2:30 p. m.—Musical program presented by Wm. Conrad Mills.
- 4:00 to 5:00 p. m.—Vesper Hour.
- 5:00 to 6:00 p. m.—KFON Concert Orchestra, sponsored by Long Beach Business Men.
- 6:15 to 7:00 p. m.—KFON Concert Orchestra.
- 7:00 to 7:45 p. m.—Fountain Club Cafe Orchestra.
- 7:45 to 9:00 p. m.—Services from First Church of Christ, Scientist, by remote control.
- 9:00 to 12:00 midnight—"Everybody's Night"—amateurs and professionals.

### MONDAY, FEBRUARY 28—

- 12:00 to 12:30 p. m.—Mae Day Beauty Salon; musical program.
- 1:00 to 1:30 p. m.—Wilshire Ionaco Co. program, featuring Clarence and Doris.
- 7:00 to 8:00 p. m.—Thrifty Sandy program, sponsored by Citizens State Bank.
- 8:15 to 9:00 p. m.—"The Haymakers," featuring old-time dance music.
- 9:00 to 12:00 midnight—"Kiwanis Frolic."

### TUESDAY, MARCH 1—

- 12:00 to 12:30 p. m.—Kay & Burbank Co. musical program.
- 1:00 to 1:30 p. m.—Kiwanis Club luncheon.
- 1:30 to 2:30 p. m.—Woman's Music Study Club, direction Ruth Parkinson.
- 7:00 to 7:30 p. m.—Novelty program.
- 7:30 to 8:00 p. m.—"Chat for Booklovers," presented by Hewitt's Bookstore.
- 9:00 to 10:00 p. m.—"The Hour De Luxe."
- 10:00 to 11:00 p. m.—Majestic Ballroom Orchestra, by remote control.
- 11:00 to 12:00 p. m.—Capitol Theatre organ recital, by remote control.

### WEDNESDAY, MARCH 2—

- 12:00 to 12:30 p. m.—Mae Day Beauty Salon musical program.
- 12:30 to 1:00 p. m.—American Markets sponsoring musical program.
- 1:00 to 1:30 p. m.—Rotary Club luncheon.
- 1:30 to 2:00 p. m.—Wilshire Ionaco Co. program, featuring Clarence and Doris.
- 2:00 to 2:30 p. m.—Department of Numerology.
- 7:00 to 7:30 p. m.—Studio program.
- 10:00 to 11:00 p. m.—Pacific Coast Club Orchestra, by remote control.
- 11:00 to 12:00 p. m.—Capitol Theatre organ recital, by remote control.

### THURSDAY, MARCH 3—

- 12:00 to 12:30 p. m.—Kay & Burbank Co., musical program.
- 7:00 to 8:00 p. m.—Studio program.
- 9:00 to 10:00 p. m.—Shell Oil Company's Orchestra.
- 10:00 to 11:00 p. m.—Majestic Ballroom Orchestra, by remote control.
- 11:00 to 12:00 p. m.—Capitol Theatre organ recital, by remote control.

### FRIDAY, MARCH 4—

- 12:00 to 12:30 p. m.—Eureka Bakery, musical program.
- 12:30 to 1:00 p. m.—American Markets, sponsoring musical program.
- 1:00 to 1:30 p. m.—Wilshire Ionaco Co., program featuring Clarence and Doris.
- 1:30 to 2:00 p. m.—Mae Day Beauty Salon, musical program.
- 2:00 to 2:30 p. m.—Department of Numerology.
- 7:00 to 7:30 p. m.—Church of Christ, by Rev. Earnest Beam.
- 7:30 to 7:45 p. m.—"A Seline Sizer program."
- 7:45 to 8:00 p. m.—"Lucky Jim" Investment Chat, by Seaboard Bond & Mortgage Co.
- 9:00 to 10:00 p. m.—Gaskill Manufacturing Co. and Missman Radio Company program.
- 10:00 to 12:00 midnight—Elks' Frolic, Lodge No. 888.

### SATURDAY, MARCH 5—

- 12:00 to 12:30 p. m.—Kay & Burbank Co. musical program.
- 1:30 to 2:30 p. m.—Fountain Club Cafe Orchestra.
- 7:00 to 8:00 p. m.—Pacific Coast Club Orchestra, by remote control.
- 9:00 to 10:00 p. m.—The Minstrel Show.
- 10:00 to 11:00 p. m.—Pacific Coast Club Orchestra, by remote control.
- 11:00 to 12:00 midnight—Capital Theatre organ recital, by remote control.

Program Published as Submitted by the Station.

# "B" Eliminator TESTING Problem Solved by Sterling



Model R-415

TO GET full value from your "B" Eliminator you must know that your "B" Power is delivering the right amount of voltage to detector, amplifier and power tube.

Low resistance voltmeters suitable for testing batteries are worthless for testing "B" Eliminators. This specially designed High Resistance Sterling is accurate for both.

Whether this voltmeter is used in your business or for your own set, it is essential if you want the facts about any "B" Eliminator. Also tests all D. C. circuits.

## Sterling R-415 VOLTMETER

A laboratory meter at the remarkably low price of

**\$8.50**

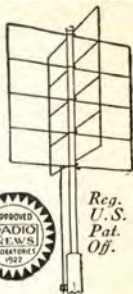
**DETSCH & COMPANY**  
SAN FRANCISCO • LOS ANGELES  
555 Turk St. 1939 E. 16th St.

Thousands say it has helped their RECEPTION

*Maybe it will improve your set!*



Reg. U.S. Pat. Off.



**GILCREST-CROSS Non-directional** Aerial eliminates most of the interference affecting long horizontal aerials by arresting the broadcast waves perpendicularly. Rises 18 feet above roof. Easy to install.

TWO SIZES

24 inch - - - \$9.00  
30 inch - - - 10.00

Prepaid anywhere in U.S.A.

## GILCREST & QUINN

2052 MARKET STREET  
SAN FRANCISCO

## FERRANTI

### Audio Frequency Transformers



For the finest tone quality, for the best reception, use Ferranti Audio Frequency Transformer A. F. 3—ratio 3½ to 1—\$12. For the next best results use Ferranti A. F. 4—ratio 3½ to 1—\$8.50.

Factory Representative

**BALDWIN PACIFIC CO.**

840 Natoma Street

San Francisco, Cal.

PAC. WHOLESALE  
RADIO CO.  
1310 S. San Pedro St.  
Los Angeles, Cal.

THE ELECTRIC CORP.  
1080 Santee Street  
Los Angeles, Cal.





**TOM SEXTON**  
Announcer

## San Diego, California—245.8 Meters

# KFSD

100 WATTS—1220 KILOCYCLES  
AIRFAN RADIO CORPORATION  
U. S. Grant Hotel, 326 Broadway, San Diego. Main 8661  
RAYMUND V. MORRIS, President  
TOM SEXTON, Announcer

"Kiss From San Diego"

DAILY EXCEPT SUNDAY—

6:00 to 7:00 p. m.—Nightly musical review.

10:00 to 11:00 p. m.—Harvey Ball and his U. S. Grant Hotel Orches

WEEK COMMENCING SUNDAY, FEBRUARY 27, 1927

SUNDAY, FEBRUARY 27—

3:00 to 4:00 p. m.—Temple service of the Theosophical University

MONDAY, FEBRUARY 28—

7:00 to 8:00 p. m.—Studio hour.

8:00 to 9:00 p. m.—First Unitarian Church program, Howard B. Bard.

9:00 to 10:00 p. m.—Mixed musical program.

TUESDAY, MARCH 1—

7:00 to 8:00 p. m.—Studio hour.

8:00 to 9:00 p. m.—Union Title Company "Classic Hour" program.

9:00 to 10:00 p. m.—Mixed musical program.

WEDNESDAY, MARCH 2—

7:00 to 7:30 p. m.—Courtesy program by Wilshire's Ionaco Company.

7:30 to 8:30 p. m.—Concert program furnished by the Theosophical University

8:30 to 9:30 p. m.—C. C. Tatum, realtor, Bay Hills Orchestra.

9:30 to 10:00 p. m.—"Popular" Orthophonic program.

THURSDAY, MARCH 3—

7:00 to 8:00 p. m.—Police program, dance music and concert music.

8:00 to 9:00 p. m.—John P. Mills, Inc., Point Loma Orchestra.

FRIDAY, MARCH 4—

7:00 to 8:00 p. m.—Studio hour.

8:00 to 9:00 p. m.—P. M. Dairy Concert Orchestra. Instrumental Trio.

9:00 to 10:00 p. m.—Mixed musical program.

SATURDAY, MARCH 5—

7:00 to 8:00 p. m.—San Diego Senior High School program.

8:00 to 9:00 p. m.—Mme. de Beauviere, "Franco-American" hour.

9:00 to 10:00 p. m.—"Classic" hour Orthophonic recital.

*Program Published as Submitted by the Station.*

## Alternating Current Transformers

Filament  
Trans.

\$5.00

I Specialize on Operating Sets  
Without Batteries

**RAY CAMPBELL**

Plate  
Trans.

\$5.00

1217 Dwiggins Street, near N. Huntington Drive, Two Blocks from Sierra Vista Station,  
LOS ANGELES, CALIF. Phone GARfield 7891. Wholesale Dealers: COOK-NICHOLS.

## TRANSTROM INTERMEDIATE TRANSFORMERS

Put the "Real Stuff" into

### SUPER-HETERODYNES

Increasing Their Selectivity, Sensitivity and Distance 100 per cent

Service and Accessories for All Sets—Portable Cabinets Made to Order

## SIERRA RADIO LABORATORIES

318 W. Fifth St.

Los Angeles, Calif.

VAndike 6464

NOW THE **SUPREME R-F 5** IS SOLD  
**FACTORY DIRECT TO YOU**  
**5-Tube Console Complete**



**\$59**

Built-in speaker, large tubes, 100 A. H. Rubber Case Battery even the inside aerial is included—nothing else to buy.

**Selectivity :: Quality :: Distance**

New Modified S. L. F. condensers allow ample separation of low wave lengths and gives absolute selectivity on all stations. Using Kellogg's laboratory grade transformers assures you of tone perfection, and for distance the utmost in sensitivity has been achieved through proper design of condensers and inductance.

**Made of Finest Parts Obtainable**

The Supreme—Made of the finest of material such as Kellogg, Yaxley, Carter, C. R. L., Benjamin, Bakelite coils.

**Order Your Set Today**

and you'll say, like everyone else that hears the Supreme, "That's the best receiver I ever heard—it's wonderful." It's simply not equalled for purity of tone or fidelity of reproduction. Remember every part is guaranteed to you—you take no chances.

**THE PATTERSON FACTORY TO YOU SALES PLAN**

puts a guaranteed \$155 console, 5-tube receiver in your home for cash at about \$35 less than the actual wholesale price. Volume production is the answer.

**Patterson Radio Manufacturing Co.**

Established 1921

239 S. Los Angeles St.—VA. 8139

Los Angeles, Calif.





CURTIS PECK  
Announcer

## San Francisco, California—428.3 Meters

# KPO

1000 WATTS—700 KILOCYCLES  
HALE BROTHERS AND THE CHRONICLE  
ALBERT J. HODGES, Technical Director  
Phone Kearney 5777

"The Voice of San Francisco"

### DAILY EXCEPT SUNDAY—

- 6:45, 7:15 and 7:45 a.m.—Daily health drill by Hugh Barrett Dobbs
- 10:10 a.m.—Household Hints.
- 10:30 a.m.—"Ye Towne Crier."
- 12:00 noon—Time signals and Scripture reading.
- 1:00 to 2:00 p.m.—Rudy Seiger's Fairmont Hotel Orchestra.
- 3:30 to 5:30 p.m.—Palace Hotel Concert Orchestra.
- 5:30 to 6:15 p.m.—Children's Hour.
- 6:15 to 6:30 p.m.—"Ye Towne Crier."
- 6:30 to 7:00 p.m.—States Restaurant Orchestra.
- 7:00 to 7:30 p.m.—Rudy Seiger's Fairmont Hotel Orchestra
- 7:30 to 8:00 p.m.—Silent.

### WEEK COMMENCING SUNDAY, FEBRUARY 27, 1927

#### SUNDAY, FEBRUARY 27—

- 9:45 to 10:45 a.m.—Undenominational and non-sectarian church service. Uda Waldrop at the organ.
- 10:45 a.m.—"Ye Towne Crier," giving the United States weather forecast and general information.
- 2:40 to 4:15 p.m.—Concert of the San Francisco Symphony Orchestra, Alfred Hertz, director, to be broadcast from the New Curran Theatre by KPO, KFI and KGO.
- 6:00 to 6:30 p.m.—States Restaurant Orchestra, Waldemar Lind director.
- 6:30 p.m.—"Ye Towne Crier," giving general information.
- 6:35 to 8:35 p.m.—Palace Hotel Concert Orchestra, Cyrus Trobde director.
- 8:35 to 10:00 p.m.—Rudy Seiger's Fairmont Hotel Concert Orchestra.
- 10:00 to 12:00 p.m.—John Wolohan and his Californians at the Trianon Ballroom.

#### MONDAY, FEBRUARY 28—

- 8:00 to 8:10 p.m.—Chamber of Commerce talk on "Industrial San Francisco," by Capen A. Fleming, director Industrial Department.
- 8:10 to 8:25 p.m.—Book reviews by Harold A. Small of the Chronicle.
- 8:25 to 9:00 p.m.—Bridge lesson No. 18.
- 9:00 to 10:00 p.m.—Studio program.
- 10:00 to 11:00 p.m.—Billy Long's Cabirians.
- 11:00 to 12:00 p.m.—KPO's Variety Hour, presenting the KPO well known artists.

#### TUESDAY, MARCH 1—

- 8:00 to 9:00 p.m.—"Uda Waldrop Hour," featuring Uda Waldrop, KPO's official organist, at the organ of the First Unitarian Church.
- 9:00 to 10:00 p.m.—Studio program.
- 10:00 to 11:00 p.m.—Palace Hotel Rose Room Dance Orchestra, Gene James director.
- 11:00 to 12:00 p.m.—John Wolohan and his Californians at the Trianon Ballroom.

#### WEDNESDAY, MARCH 2—

- 8:00 to 9:00 p.m.—Program by the Atwater Kent Artists, under the auspices of Ernest Ingold, Inc.
- 9:00 to 10:45 p.m.—KFI and KPO, Los Angeles Philharmonic Orchestra.
- 10:45 to 12:00 p.m.—Billy Long's Cabirians.

#### THURSDAY, MARCH 3—

- 8:00 to 9:00 p.m.—Studio program.
- 9:00 to 10:00 p.m.—Studio program.
- 10:00 to 11:00 p.m.—Palace Hotel Rose Room Dance Orchestra, Gene James director.
- 11:00 to 12:00 p.m.—John Wolohan and his Californians at the Trianon Ballroom.

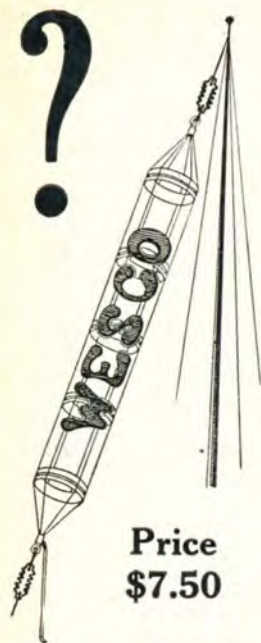
#### FRIDAY, MARCH 4—

- 8:00 to 10:00 p.m.—Walter Krausgrill's Balconades Ballroom Orchestra.
- 10:00 to 11:00 p.m.—States Restaurant Orchestra, Waldemar Lind director.
- 11:00 to 12:00 p.m.—John Wolohan and his Californians at the Trianon Ballroom.

#### SATURDAY, MARCH 5—

- 6:30 to 7:30 p.m.—States Restaurant Orchestra, Waldemar Lind director.
- 8:00 to 9:00 p.m.—Simultaneous broadcast by KPO and KFI of a program presented by the San Francisco branch of the manufacturers of White King and Mission Bell Soap.
- 9:00 to 10:00 p.m.—Palace Hotel Rose Room Dance Orchestra, Gene James director.
- 10:00 p.m. to 1:00 a.m.—Walter Krausgrill's Balconades Ballroom Orchestra.
- 9:00 to 11:00 p.m.—Intermissions by Maurice Gunsky, tenor, and Merton Borjes, pianist.

Program Published as Submitted by the Station.



Price  
\$7.50

## NO FOOLIN' FOLKS!!! "WESCO" Low Loss Antennae

deliver the goods. One will increase your reception by giving you greater volume on distant stations, and clearer tone quality on local broadcasting stations. It is non-directional, receiving equally in all directions. Easily installed, only requiring a single 20-foot pole. Comes complete with heavy duty insulators and a 19-stranded rubber-covered lead-in cable.

If your dealer does not stock them he will be glad to get one for you, or you may order direct.



LOW LOSS ANTENNA

WEST COAST RADIO CO.

PHONE VERMONT 1893

2407 WEST SLAUSON AVE

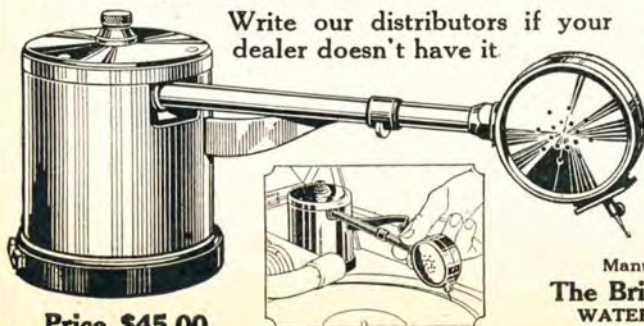
LOS ANGELES.

# Bristophon

## ELECTRIC POWER AMPLIFIER

Electrifies the ordinary phonograph and gives it the tone range, sweetness and volume of the new "phonic" instruments. Operates in three ways: (1) with radio Power Speaker, (2) with radio Power Amplifier, (3) with radio Speaker only.

Write our distributors if your dealer doesn't have it



Price \$45.00

### Pacific Coast Distributors:

- SAN FRANCISCO:**  
Pacific States Elec. Co.  
575 Mission St.  
Leo. J. Meyberg Co.  
973 Mission St.
- LOS ANGELES:**  
Pacific States Elec. Co.  
236 S. Los Angeles St.  
Leo. J. Meyberg Co.  
1022 S. Wall St.
- SPOKANE:**  
Pacific States Elec. Co.  
122 S. Lincoln St.
- OAKLAND:**  
Leo. J. Meyberg Co.  
921 Hawson St.
- SEATTLE:**  
Pacific States Elec. Co.  
570 First Ave., So.
- PORTLAND:**  
Pacific States Elec. Co.

Manufactured by  
**The Bristol Company**  
WATERBURY, CONN.





Howard I. Milholland  
Announcer

## Oakland, California—361.2 Meters

# KGO

4000 WATTS—830 KILOCYCLES  
PACIFIC COAST STATION, GENERAL ELECTRIC CO.  
Phone Fruitvale 5980

DAILY EXCEPT SUNDAY—

11:30 a. m. to 1:00 p. m.—Hotel Leamington concert.

1:30 and 6:00 p. m.—Stock and weather reports. Baseball scores.

6:00 to 6:55 p. m.—Bem's Little Symphony Orchestra

6:55 to 7:30 p. m.—Weather and stock reports.

WEEK COMMENCING SUNDAY, FEBRUARY 27, 1927

SUNDAY, FEBRUARY 27—

11:00 a. m.—First Presbyterian Church service.

2:40 p. m.—San Francisco Symphony Orchestra concert

6:30 to 7:30 p. m.—Concert by Bem's Little Symphony Orchestra.

7:30 p. m.—Weather Bureau report.

7:35 p. m.—First Presbyterian Church service, Oakland.

9:00 to 10:00 p. m.—Concert by Bem's Little Symphony Orchestra.

MONDAY, FEBRUARY 28—

4:00 to 5:00 p. m.—California Federation of Women's Clubs.

5:30 to 6:00 p. m.—KGO Kiddies' Klub.

TUESDAY, MARCH 1—

5:00 p. m.—Lectures by Dr. Virgil E. Dickson.

8:00 to 9:00 p. m.—The Pilgrims. Eveready program by National Carbon Company.

9:00 p. m.—Joseph Henry Jackson, "Chats About New Books."

9:20 p. m.—Surprise broadcast.

10:30 to 11:30 p. m.—John Wharry Lewis Orchestra.

WEDNESDAY, MARCH 2—

5:30 p. m.—"For Instance," by General Jackson.

8:00 p. m.—Farm program. W. O. W. Male Trio.

THURSDAY, MARCH 3—

5:00 to 6:00 p. m.—George W. Ludlow, "Friend to Boys."

8:00 to 9:00 p. m.—"The Serenade," comic opera.

9:00 to 12:00 p. m.—John Philpott's Midshipmen.

FRIDAY, MARCH 4—

8:00 p. m.—Studio program.

SATURDAY, MARCH 5—

8:00 p. m.—"Weekly Sport Review," by Al Santoro.

8:15 to 9:15 p. m.—Program from Hotel Leamington, Oakland.

9:15 p. m. to 1:00 a. m.—Dance music, Wilt Gunzendorfer's Hotel Whitcomb Band.

Program Published as Submitted by the Station.

# KEX

## Portland, Oregon—447 Meters

4000 WATTS  
THE WESTERN BROADCASTING COMPANY, PORTLAND

PROGRAM COMMENCING SUNDAY, FEBRUARY 28, 1927

DAILY EXCEPT SUNDAY—

5:30 to 6:00 p. m.—Radio code practice and daily radio chat by Clarence Clark, technical director of KEX.

6:00 to 6:30 p. m.—Children's Hour by direct wire from Wremers Chateau.

6:30 to 8:00 p. m.—Congress Hotel dinner music; Jimmie Davis and his Pompeian Orchestra.

8:00 to 9:00 p. m.—Studio program.

9:00 p. m.—Western Union time signals.

TUESDAY, THURSDAY, SATURDAY

9:00 to 10:30 p. m.—Studio program.

10:30 to 12:00 p. m.—Dance music, direct wire from Kromers Chateau.

SUNDAY ONLY—

3:00 to 5:00 p. m.—Concert Orchestra.

5:00 to 6:00 p. m.—Church services.

6:00 to 8:00 p. m.—Congress Hotel dinner music.

8:00 to 9:00 p. m.—Studio program.

9:00 p. m.—Time signals, Western Union time signals.

9:00 to 10:30 p. m.—Studio program.

10:20 to 12:00 p. m.—KEX Frolic.

Program Published as Submitted by the Station

# OUR EXCEPTIONAL OFFER

*Get the Two Greatest Radio Magazines  
For Almost the Price of One!*

## SAVE \$2.00

**RADIO NEWS**—The National Radio Monthly  
with the largest circulation and following of  
any Radio publication in the world—

*Regular Price \$2.50*

**RADIO DOINGS**—The Leading Pacific Coast  
Radio Weekly—the Radio authority of the  
Pacific Coast—

*Regular Price \$3.00*

These two leaders in their respective fields—the great  
National Monthly and the great Pacific Coast Weekly—

### BOTH NOW FOR \$3.50

*You Can't Afford to Pass This Offer By*

Attach Money Order, Check or Currency to the Coupon and Mail to Us  
Right Now

**RADIO DOINGS,**  
407 E. Pico Street,  
Los Angeles, Calif.

*Or Conger & Moody,*  
Sharon Bldg., San Francisco, Calif.

Send me **RADIO DOINGS** and "**RADIO NEWS**" for one year.  
I enclose \$3.50.

Name.....

Address.....

City and State.....

(Specify NEW or RENEWAL)





STEPHEN I. GAYLORD  
Announcer

# Portland, Oregon—491.5 Meters

## KGW

1000 WATTS—610 KILOCYCLES  
THE MORNING OREGONIAN  
"Keep Growing Wiser"

### DAILY EXCEPT SUNDAY—

- 7:15 a. m.—Setting up exercise.
- 9:45 to 10:00 a. m.—Women's health exercises.
- 10:00 to 11:30 a. m.—Town Crier, weather reports, news items.
- 12:30 to 1:30 p. m.—Noon concert.
- 6:00 to 7:00 p. m.—Dinner Concert.
- 7:30 to 7:45 p. m.—Weather and market reports.

### WEEK COMMENCING SUNDAY, FEBRUARY 27, 1927

#### SUNDAY, FEBRUARY 27—

- 10:55 to 12:30 p. m.—Morning services from the St. Stephens Pro-Cathedral.
- 4:00 to 6:00 p. m.—KGW Salon Orchestra.
- 7:30 to 9:00 p. m.—Evening services from the Hinson Memorial Baptist Church.
- 9:00 to 10:00 p. m.—Concert by the Chevrolet Little Symphony Orchestra.

#### MONDAY, FEBRUARY 28—

- 7:00 to 7:30 p. m.—Children's program.
- 8:00 to 10:00 p. m.—Vaudeville entertainment.
- 10:00 to 12:00 p. m.—Dance music by McElroy's Orchestra.

#### TUESDAY, MARCH 1—

- 2:30 to 3:00 p. m.—Women's matinee.
- 8:00 to 10:00 p. m.—Educational program.
- 10:00 to 12:00 p. m.—Dance music, featuring Herman Kenin and his orchestra.

#### WEDNESDAY, MARCH 2—

- 7:00 to 7:15 p. m.—Utility service.
- 7:30 to 8:00 p. m.—Albers Poultry School.
- 8:00 to 9:00 p. m.—Concert, courtesy 7th U. S. Infantry Band.
- 9:00 to 10:00 p. m.—Concert, by Maxwell-House-Coffee Orchestra, simultaneously with KFOA and KHQ.

#### THURSDAY, MARCH 3—

- 7:45 to 8:00 p. m.—Lecture, given under the auspices of the Catholic Truth Society of Oregon.
- 8:00 to 10:00 p. m.—Vaudeville entertainment.

#### FRIDAY, MARCH 4—

- 2:00 to 3:00 p. m.—Women's matinee.
- 7:00 to 7:30 p. m.—Children's program.
- 7:30 to 8:00 p. m.—Poultry talk.
- 8:00 to 9:00 p. m.—Concert by the Mission Bell Orchestra, from KGW through KFOA and KHQ.
- 9:00 to 10:30 p. m.—Dance music by Cole McElroy's orchestra.
- 10:30 to 12:00 p. m.—Weekly frolic of the Keep Growing Wiser Order of Hoot Owls broadcast with KMO, KFOA, KHQ.

#### SATURDAY, MARCH 5—

- 9:00 to 10:00 p. m.—Concert, Calumet Instrument Quartet.
- 10:00 to 12:00 p. m.—Dance music, featuring Herman Kenin and his orchestra.

*Program Published as Submitted by the Station.*

## PALMER RADIO LABORATORY

Established 1923

*Specializing in*

### SUPER-HETERODYNES AND INFRADYNES

**Intermediate Transformers Made and Calibrated**

Also all other types of receivers made to operate efficiently

*Satisfaction Guaranteed or No Charge*

Advice Free

Open Evenings Till 9 P. M.

Courtesy to All

4529 S. Vermont, Los Angeles. Phone VERmont 7883



# The Upper Layer

By K. G. ORMISTON

*(Editor's Note—In our last issue we reported that the Bureau of Standards had announced the completion of experiments resulting in proof of the existence of the so-called Heaviside Layer. Inasmuch as every listener-in who has observed "fading" of a distant station is concerned with this subject, Mr. Ormiston is here giving some details of the experiments and conclusions.)*

The scientific experiments conducted last year by the Bureau of Standards, the Naval Research Laboratory, the Radio Corporation of America and the Carnegie Institute of Washington throw considerable light on the phenomena of fading.

In order to explain radio transmission over more than comparatively short distances and to account for fading, it has

Fig. 1 Direct Wave

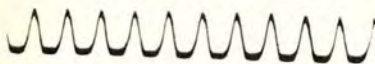
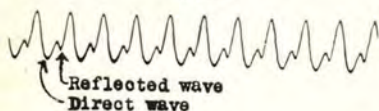


Fig. 2 Direct and Reflected Waves



long been assumed that there is an electrical "ceiling" in the upper atmosphere fifty or more miles above the earth's surface. It has been supposed that this "ceiling" consists of a layer or strata of free ions and electrons probably emanating from the Sun, and therefore constituting a good conductor of magnetic energy.

The scientists reasoned that if such a layer did exist, it should be possible over short distances to detect two impulses at the receiving station for each one sent out from the transmitter. One impulse would be due to the portion of the wave which followed the earth's surface, and the second would result from portion of the wave reflected back to earth from the "ceiling" or upper conducting surface. There should be an appreciable interval of time between the

two, since the reflected wave must travel a greater distance than the one arriving in the direct horizontal path.

A receiving station was set up eight miles from a transmitting station. The transmitter was arranged to send out groups of waves, each having a duration of 1/1000 of a second. At the receiving end the signals were detected, amplified, and recorded by photographing the tracings made by an oscillograph.

The photographic records show conclusively that each wave registered twice under certain conditions. A reproduction of the oscillograph record shown in Figure 1 illustrates the reception of the direct wave only, while Fig. 2 shows the "reflection from the ceiling," arriving an instant behind each direct wave. It required many months of experimenting to develop methods by which the two waves could be accurately recorded and the interval of time between their arrivals measured.

It is clear that since two impulses reach the receiver for each one transmitted, that two different paths are used. Knowing the speed of the waves, and having measured the interval of time between arrivals, it was found that the second arrival, the "reflected" wave, must have been turned back at a height of about 100 miles. During prolonged observations it was found that the upper reflecting surface varied in height above the earth, this variation being all the way from 30 to 150 miles. Furthermore, that its efficiency as a reflector varied, the changes at times being very sudden. The rise and fall of the layer, the changes in its reflecting ability and the

(Continued on page 76)

George McClelland, vice-president of the National Broadcasting Company, owners of stations WJZ and WEAJ of New York City, and now inaugurating a nation-wide chain of broadcasting stations, is in Los Angeles to further the extension and strengthening of Western programs. G. J. Poyden, who has been appointed Pacific Coast manager for the company, will follow soon.

The return of the fights as a regular Friday evening feature over KNX, the Evening Express radio station, has met with instant approval from listeners. The main event of the American Legion Stadium weekly card is put on the air. Curtis Benton, scenario writer, gives a blow by blow account of the battle, round by round, KNX has arranged a flexible program preceding the fight, so it is possible to start at the first round. Many times knockouts in the preliminaries bring the starting time of the big bout very early. By doing this fans are assured of the entire bout.

The new Burbank broadcasting station, call letters KELW, operates on 535 meters wave-length and 250 watts power. They are on the air daily from 6 to 7 p. m., and from 8 to 10 p. m. In addition to these programs there is an afternoon broadcast on Sunday, from 2 to 4 p. m.

Model No. 25  
**GOODWORK RADIO**  
 6715 Avalon Blvd. Open Evening



## Broadcasters' Digest

George McClelland, vice-president of the National Broadcasting Company, owners of stations WJZ and WEAJ of New York City, and now inaugurating a nation-wide chain of broadcasting stations, is in Los Angeles to further the extension and strengthening of Western programs. G. J. Poyden, who has been appointed Pacific Coast manager for the company, will follow soon.

The return of the fights as a regular Friday evening feature over KNX, the Evening Express radio station, has met with instant approval from listeners. The main event of the American Legion Stadium weekly card is put on the air. Curtis Benton, scenario writer, gives a blow by blow account of the battle, round by round, KNX has arranged a flexible program preceding the fight, so it is possible to start at the first round. Many times knockouts in the preliminaries bring the starting time of the big bout very early. By doing this fans are assured of the entire bout.

The new Burbank broadcasting station, call letters KELW, operates on 535 meters wave-length and 250 watts power. They are on the air daily from 6 to 7 p. m., and from 8 to 10 p. m. In addition to these programs there is an afternoon broadcast on Sunday, from 2 to 4 p. m.

The Los Angeles Council on International Relations is sponsoring a series of nine o'clocks from KHJ each week on Friday with noted speakers discussing each topic in ten minutes' time.

Four years old and still growing wiser and funnier is the famous KGW Keep Growing Wiser Order of Hoot Owls which celebrated its birthday a few days ago. Telegrams by the hundred, telephone calls that blocked the switchboard, and a stack of letters that left the mail carrier an old broken man, helped to make the occasion more memorable. A stupendous donation of cakes, ice cream, ginger ale, candy and the etcetera ad infinitum that were received from widely separated points all but made a wreck of the "Owls."

Station KFWI of San Francisco changed owners recently. Gilson Willets is now presiding as general manager. Mr. Willets has enjoyed a wide and varied experience in the radio field. He was for two years at WOC, Davenport, Iowa, and then engineer and manager of WRNY, New York. From there he jumped to WDBO at Winterpark, Florida. After the Florida crash, Mr. Willets went in search of a still finer climate and found it in California.



Model No. 25

### GOODWORK RADIO CABINET SHOP

6715 Avalon Blvd.

Open Evenings and Sundays

Los Angeles, Calif.

## An Exceptional Buy!

This cabinet is made of batan Mahogany, beautifully finished. A most attractive model.

12 to 14x7" panel, 10 inches deep.

**Only \$7.75**

Send for our illustrated catalogue



## The Woman's Page

(Continued from page 16)

boiled eggs with a fork until they are mealy; add 1 teaspoonful of melted butter, 2 tablespoons vinegar, 1 tablespoon tomato catsup, a little salt and 1 teaspoonful Gebhardt's Chili powder; mix thoroughly, squeezing in the juice of half a lemon. Toss the oysters up in this sauce and serve on shredded celery and lettuce. This is an unusual and delightful Spanish salad.

The German recipe is more hearty, a foundation for a luncheon or even dinner. Place in a shallow baking-dish alternate layers of cooked sauerkraut and raw oysters, with sauerkraut on the bottom and top of the dish. Over the top layer place strips of fat bacon. Cook in a quick oven about half an hour. A Katzenjammer Salad uses 1 dozen large oysters, dipped in cracker-crumbs, and fried in hot olive oil; drain on blotting paper; lay flat on dish and place on ice. Whip until stiff,  $\frac{1}{2}$  cup sour cream; add yolks of 2 eggs, beaten, salt, dry mustard and sugar to taste. Whip all together; add a teaspoonful each of olive oil and lemon juice. Rub the salad bowl with a slice of onion and line with lettuce. Cut the oysters in half and mix with a cupful of finely minced crisp white cel-

## The Upper Layer

(Continued from page 74)

interference between the reflected and direct waves account for the phenomena of fading.

At times, instead of one reflection there would be several, indicating a rough or corrugated surface of the layer, and accounting for distortion and mushy reception. Research laboratories are attacking the many other problems and far-reaching effects which the ionization of the upper atmosphere involve.

Through the use of the radio compass, the S. S. Clearton, heavily loaded with coal, minus her rudder and drifting helpless in the North Atlantic, about 380 miles east of New York, was rescued by the Coast Guard Cutter Seneca. This despite the fact of pitch darkness, at midnight and gales and rough seas.

In each room of a Los Angeles hotel is placed a notice which reads, "For your entertainment we are prepared to place a six-tube portable radio set in this room on a reasonable rental basis."

ery; heap these in the center, and pour the dressing over all.

**Y  
O  
U  
R**

Transmitting and receiving equipment designed and constructed.  
Radio and technical problems correctly solved.

Questions answered accurately.

Receiver and all other equipment carefully tested, repaired and calibrated.

**COMPLETE WORKING DRAWINGS OF AMERICA'S FINEST RECEIVER.  
ADJUSTABLE OUTPUT TRANSFORMERS THAT MATCH TUBES  
AND GOOD SPEAKERS FOR HIGH QUALITY.**

Transformers and Choke Coils to any requirement. Complete Speech Amplifiers and Control Panels for broadcast stations and public address systems or any parts for same. Punchings and design data for any Core, such equipment including that for tungar battery charging transformers of any capacity and voltage. High grade Resistance Wire, special alloy steels.

**FINEST EQUIPPED LABORATORY ON THE COAST  
COME AND INSPECT IT.**

**Technical Laboratory of N. E. Brown**

Tel. THornwal 0270.

6805 S. Western Ave., Los Angeles



## Timely Trade Topics

### WHOLESALEERS BEWARE!

A number of jobbers of radio merchandise have been recently victimized by a party representing himself as an employee of the F. C. Nash Company of Pasadena.

This party has apparently stolen a book of purchase order blanks from the above concern and is presenting them to various wholesale houses in this vicinity.

All wholesalers are warned to look out for this man and should they be approached to get in touch with the Police Department immediately.

The Elkon Works, manufacturers of the famous Elkon dry charging devices, have perfected their chargers and A eliminators to take care of the low line voltage and line fluctuation that is at times present in the electric current supplied in Southern California.

Regardless of voltage drop the Elkon devices deliver a satisfactory output to charge the A storage battery properly and to keep it up to its fullest efficiency. The Yale Radio Electric Company are distributors in Southern California for Elkon products.

Neale, Inc., 1800 W. Pico street, Los Angeles, manufacturers of Neelite Neon Tube Signs, announce that they have eliminated all radio interference from their neon signs. These beautiful signs have long been recognized by merchants as business getters, but radio dealers have in many cases hesitated in buying one because of the interference from the high voltage transformers which operate the sign. Engineers of Neale, Inc., and the General Electric Company have solved this problem and the new General Electric transformers used will not cause the slightest hum in the most sensitive set.

C. E. Linebarger, president of The Chaslyn Company, Chicago, is visiting the Pacific Coast with his family and spent the week in Los Angeles. He announces the appointment of S. A. Winsor as their representative for Southern California. We are all familiar with the red, white and green balls, that tell us when our batteries are charged or need attention, and which are used extensively in A Power Units. Hydrometers which use these telltale little balls are the product of The Chaslyn Company.

George Brosch, sales manager of the Pacific States Division of the Erla Company, Chicago, is a recent visitor in Los Angeles. He reports excellent business for Erla products in the territory.

Mr. F. Clay McConnell, who has been associated with the Chanslor and Lyon Company of Los Angeles, Zenith distributors, for the past three years, announces the opening of a new Zenith Sales and Service Shop at 1241 Vine street, Hollywood, Cal. Mr. McConnell's experience in jobbing the Zenith line and his pleasing personality should be valuable assets in his new venture, and his many friends in the radio and automotive trades wish him every success.

Arthur S. Detsch, Security Building, Portland, is representing Carl A. Stone Company, in the Pacific northwest, representing Shamrock Manufacturing Company; Trimm Radio Manufacturing Company, and Hoosick Falls parts.

The next regular meeting of the Radio Manufacturers' Agents Association of Southern California will be held at noon, Friday, February 25, at the Alexandria Hotel, mezzanine floor. Members, please note the new place of meeting. A highly important subject will be discussed.

# The 1930 Radio Receiver

Sounds funny—but it's true. Thousands of them are already in operation and the owners of these sets are hearing stations on the loud speaker which were ordinarily inaudible on the average 10-tube radio set. This new 1930 receiver is the INFRADYNE, sponsored by "RADIO" (Magazine), San Francisco. In the March issue of "RADIO," which most news dealers will have on sale in your vicinity on February 25th, the INFRADYNE is more fully described and many practical hints are given on its operation with a set of battery eliminators. Get the whole story of the INFRADYNE in the OFFICIAL INFRADYNE MANUAL, by Sargent and Rayment, the inventors of the circuit. This complete manual sells for twenty-five cents, postpaid. Drop a quarter in coin in an envelope, mail it to us and we will send the booklet to you postpaid. It's a story well worth reading and tells you what the 1930 radio set is like. Only a few hundred copies left. Orders must be received now to insure delivery.

## Pacific Radio Publishing Co.

Pacific Building - - San Francisco



# RAY-O-VAC

The French Battery Company of Madison, Wisconsin, is one of the largest manufacturers in the dry battery and flashlight field. The Company's products, advertised and sold under the trade name of Ray-O-Vac, are universally known for their high quality. This reputation the Company goes to great lengths to maintain. The secret of long service given by Ray-O-Vac products is the care taken in selecting raw materials, as well as in the process of manufacture. The purchaser of Ray-O-Vacs is certain to get the best that can be obtained.



The new radio batteries are the very latest effort to make Ray-O-Vac products the most serviceable of their kind to radio fans. The improved reception, with either of these batteries in the circuits, is very noticeable, due to their low internal resistance. Owing to a new type of construction they are light in weight, internal "shorting" is eliminated, and unusual dependability secured. These batteries are, indeed, "Radio's Best Battery."

## FRENCH BATTERY COMPANY

Madison, Wisconsin

737 Terminal St.

Los Angeles



# FEDERAL Ortho-Sonic

## You will like Federal

Instinctively you will realize that Federal Ortho-Sonic is produced by master craftsmen of many years' experience.

The marvelous tone-quality, extreme selectivity and the ability to bring in distant stations will settle all doubts as to which radio receiver you will ultimately purchase.



WHY NOT SEE AND HEAR A FEDERAL TODAY?

We Recommend

Eliminators

Elkon  
Modern  
Sterling  
Balkite

*Cunningham*  
RADIO TUBES

Since 1915-  
Standard for all Sets  
In the orange and blue carton

Speakers

Amplion  
Enchanter  
Herald  
Fine Arts

Wholesale Distributors

# Yale Radio Electric Co.

LOS ANGELES

1111 Wall Street

Westmore 3351



**This file including all text and images are from scans of a private personal collection and have been scanned for archival and research purposes. This file may be freely distributed, but not sold on ebay or on any commercial sites, catalogs, booths or kiosks, either as reprints or by electronic methods. This file may be downloaded without charge from the Radio Researchers Group website at <http://www.otrr.org/>**

**Please help in the preservation of old time radio by supporting legitimate organizations who strive to preserve and restore the programs and related information.**