

# RADIO DOINGS

RED BOOK OF RADIO

10¢  
WEEKLY

*The Radio Authority  
of the  
Pacific Coast*



Gelsert, Edwin A.  
2301 W. 29th Place  
1-30-28  
12-27-27

Bob Nelson, "The Dixie Dynamo," KNX, Hollywood, Calif.

FEBRUARY 13-19, 1927

No. 7

# Kolster Radio

"A Parade of Stations"



Model 6-D, 6 Tubes—\$98.50

Every Kolster owner is an enthusiast! To find out why, step in and see your nearest Kolster dealer. He will be glad to demonstrate for you without obligation, for he, too, is a Kolster fan!

## LOS ANGELES

### Hollywood

ANDREWS RADIO CO.  
1704 McCadden Place  
Gladstone 0704

HOLLYWOOD RADIO CO.  
709 N. Western Ave.  
Gladstone 2897

OTTO K. OLESEN  
ILLUMINATING CO.  
6548 Hollywood Blvd.  
Gladstone 5194

### Wilshire

LA BREA ELECTRIC &  
RADIO CO.  
5222 Wilshire Blvd.  
Whitney 911

### Highland Park

MCNEIL'S MUSIC SHOP  
5711 Pasadena Ave.  
GARfield 2583

## Northeast

NORTON & NORTON  
2211 N. Broadway  
CApitol 0484

## South

JENKINS RADIO SHOP  
8450-52 S. Broadway  
THornwall 4460

STURGIS MUSIC CO.  
4711 S. Broadway  
AXridge 7106

## Southwest

BOB BROWN BATTERY &  
RADIO SERVICE  
4353 S. Figueroa St.  
HUmbolt 2192

## Downtown

BULLOCK'S  
7th and Broadway  
BRoadway 6900

TUFTS-LYON ARMS CO.  
609 S. Olive St.  
TRinity 4626

## Southern California

### ALHAMBRA

ALHAMBRA RADIO ELEC.  
1855 W. Main St.  
Alhambra 2366

### ANAHEIM

HAMMELL'S MUSIC CO.  
124 E. Center St.  
Anaheim 145

### BALBOA

MODJESKA RADIO  
704 E. Central  
Newport Beach 125

### BELLFLOWER

BELLFLOWER ELEC. SHOP  
Downey 7130

### BURBANK

COLLINS RADIO  
223 E. San Fernando Blvd.  
Burbank 446-W

### EAGLE ROCK

WEAVER & KING  
3059 Eagle Rock Blvd.  
ALbany 3417

California Distributors of Kolster:

# H. Earle Wright, Incorporated

123-129 Second Street  
SAN FRANCISCO

415 East Eighth Street  
LOS ANGELES



# Kolster Radio

"A Parade of Stations"

Southern California Dealers—Continued

## GLENDALE

BUDWIG RADIO CO.  
201 N. Brand Blvd.  
Glendale 1801

## INGLEWOOD

SEVILLE RADIO SHOPPE  
6411 West Blvd.  
Inglewood 771-W

## LONG BEACH

PREST & DEAN RADIO  
356 American Ave.  
Long Beach 617-97

RIALTO RADIO CO.  
430 American Ave.  
Long Beach 653-171

## LOMITA

CALKINS HARDWARE  
1129 Narbonne  
Lomita 115

## MONROVIA

CLAUDE S. CHESSE  
125 W. White Oaks  
Main 458

## MONTEREY PARK

MONTEREY PARK MUSIC CO.  
102 E. Garvey  
Alhambra 1182-M

## PASADENA

ASHTON'S RADIOELECTRIC  
STORE  
176<sup>1</sup>/<sub>2</sub> E. Colorado St.  
Colorado 4042

WILSON MUSIC CO.  
180 E. Colorado St.  
Terrace 6360

## POMONA

JOHN BURNLEY  
120 E. Second St.  
Pomona 1472

## REDLANDS

MUNZIG RADIO  
115 N. Fifth St.  
Main 863

## REDONDO

J. H. THORP RADIO  
124 S. Pacific Ave.  
Redondo 3621

## SAN BERNARDINO

THEW RADIO CO.  
Fleming Bldg.  
San Bernardino 381-12

## SAN GABRIEL

MURPHY & HENDRICKX  
243 S. San Gabriel Blvd.  
San Gabriel 3122

## SAN DIEGO

MARYLAND AUTO SUPPLY  
650 F Street  
Main 3590

MILLER BROTHERS  
30th and University  
Hillcrest 200

JACK M. WHITLEY  
411 C Street  
Main 4512

## SAN PEDRO

PACIFIC MUSIC CO.  
1025 Pacific Ave.  
San Pedro 295-W

## SANTA ANA

HAWLEY SPORTING GOODS  
305 N. Sycamore  
Santa Ana 1091-W

TURNER RADIO CO.  
118 E. Fourth St.  
Santa Ana 1172

## SANTA BARBARA

J. E. WILEY  
San Marcos Bldg.

## SANTA MONICA

CRONK MUSIC HOUSE  
406 Santa Monica Blvd.  
Santa Monica 26795

RADIO SERVICE CO.  
14th and Montana  
Santa Monica 26201

SANTA MONICA RADIO CO.  
305 Santa Monica Blvd.  
Santa Monica 24240

## SANTA PAULA

AVERY MUSIC CO.  
933 Main St.  
Santa Paula 97

## SIERRA MADRE

SIERRA MADRE ELEC. CO.  
(G. I. Farman)  
Opp. P. E. Station  
Main 120

## SOUTH PASADENA

THE RADIO ELEC. STORE  
1161 Fair Oaks  
Colorado 6574  
Eliot 3397

## TORRANCE

DE BRA RADIO CO.  
2175 Cravens  
Torrance 73-J

## UPLAND

PACIFIC COAST ENGINEER-  
ING CO.  
229 Second St.

## VENTURA

MOORE & FAZIO  
733 Main St.  
Ventura 249

## WILMINGTON

WILMINGTON HDWE. CO.  
300 Canal St.  
Wilmington 20-T

"Rich  
Tone-Quality"

# KOLSTER

"Clear-Cut  
Selectivity"

# STADLEY ALL-WAVE SINGLE DIAL RECEIVER



**TWO RADIOS IN ONE!**

**Five Tubes—\$100.00, Less Accessories**

Meter range 30 to 550 meters. Pull in KDKA like KFI any evening!

## “The Bell-Diver”

**A Separate Unit, Plugs Into ANY RADIO,  
Instantly Converting It Into a Low-Wave  
Receiver**

Enables you to get any station from 30 to 200 meters, regardless of weather conditions or time of year. Contained in handsome cabinet, choice of finish.

**\$25.00 Prepaid**

*Ask for Demonstration at*

Karyl Radio Shop, 2026 W. Seventh St. (Near Alvarado), Los Angeles, Cal.  
Phone DRexel 7845

Jobbers and Dealers write for territory direct to Manufacturers:

**STADLEY & ZIMMERMAN**

2026 WEST SEVENTH STREET

LOS ANGELES, CALIFORNIA



*New York Office*  
J. W. HASTIE  
155 East 42nd Street  
Vanderbilt 4661

*Chicago Office*  
A. G. RUDOLPH  
500 N. Dearborn St.

*San Francisco Office*  
CONGER & MOODY  
Sharon Building  
Kearney 8483

# Radio Doings

Trade Mark Reg. U. S. Pat. Off.

407 East Pico Street, Los Angeles, Calif.

*"The Red Book of Radio"*

H. C. CHARLES  
*Editor*

J. S. MILLER  
*Associate Editor*

FORBES W. VAN WHY  
*Technical Editor*

MAJ. LAWRENCE MOTT  
*Associate Editor*

(Entered as second-class matter, Nov. 25, 1922, Los Angeles, Cal., Post Office, under Act of March 3, 1897.)  
Copyright, 1926, by Horwood Publishing Co.  
Issued Weekly. Ten Cents a Copy, Three Dollars a Year. Canada and Foreign Countries, \$3.50 per Year.

Vol. X      Los Angeles      FEBRUARY 12, 1927      San Francisco      No. 7

## Our Prize Contest

**R**ADIO is one of the greatest inventions. It has brought to us news items, political events and music. It brings to us instantly thoughts from men who are leaders in the world's advancement. It is promoting human co-operation and betterment. Ships at sea using the Radio Compass easily determine their exact location regardless of weather conditions. The farmers are brought in touch with the doings of the world. They receive the prices of farm products almost as quickly as they are established on the exchanges.

Radio Telephony communication across the Atlantic Ocean has allowed the business men of England and the United States to get in direct communication with each other.

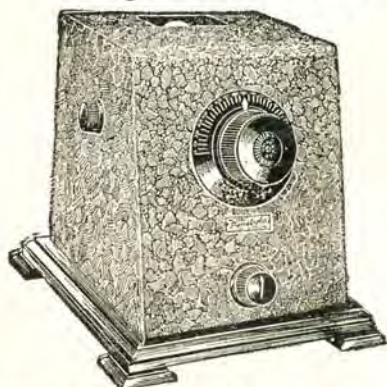
An almost endless list could be made of the benefits of Radio. Has it benefited you?

Believing that many of our friends would welcome the opportunity of expressing themselves we have decided to give a prize of a Voluphone Electrical Reproducing Phonographic Unit, for the best letter of not more than three hundred words telling what developments of Radio have brought about the greatest benefit to the American public. This is a subject which could be greatly elaborated upon so we ask that you write simply and plainly your ideas of this development and its resultant benefits and send it to the Prize Contest Editor of Radio Doings.

This contest is open to all of our subscribers and readers. The winning letter and the name of the writer will be published in Radio Doings, issue of March 13th.

# Penetrola <sup>DOES THE</sup> TRICK

## Try this on YOUR Radio



SEE LETTER BELOW

RADIO DIGEST,  
Chicago, Ill.

Your latest issue with enclosed editorial leads me to tell you my tuning experience. With the use of the Penetrola ahead of my radio, I separate two stations on the same wave length. I have six pairs as follows:

- 238--WOK, Chicago
- KNRC, Los Angeles
- 384--KJR, Seattle
- KLX, Denver
- 275--WSWS, Chicago
- KFSG, Los Angeles
- 370--WJJD, Mooseheart
- KMTR, Los Angeles
- 302--KTAB, Oakland
- WLIB, Chicago
- 246--KDYL, Salt Lake
- KFSD, San Diego

*Always  
When  
Both  
Stations  
With Same  
Wave  
Length  
Are On  
Together*

Everyone Is Talking About It  
Hundreds Are Using It  
Thousands Are in Need of It  
Penetrola Interference

### PENETROLA

Transforms your old Radio into a  
powerful, up-to-date Receiver.

### PENETROLA

Will Operate With Any Set

I hope the above will help some DX fans who can't split them as well as I do.

Yours truly,  
(Signed) WM. E. CLARK,  
1912 37th St., Sacramento, Calif.

## C. W. SMITH CO.

*"The Home of Utah Speakers"*

Gentlemen:

Enclosed please find check or money order for \$35 for which please send me one Walbert Penetrola. If at the end of 3 days it does not perform to my entire satisfaction I will return it and you will refund my money.

Loop type     Outdoor aerial type  
(Check which type of set you own)

Send me complete information about the Walbert Isofarad receiver without obligation.

NAME .....

ADDRESS .....

1125 Wall St.

LOS ANGELES, CAL.

Westmore 3291



# We Carry In Stock

the full range of

# CeCo Tubes



Used by Wm. R. Davies in winning the world's long distance record and endorsed and specified by all leading national authorities.

---

CeCo Tubes Spell More Distance.



---

CeCo Tubes Cost No More.

---

A CeCo Tube for Every Radio Purpose.

---

Satisfaction Guaranteed or your money refunded.

Authorized Wholesale Distribution

## .C. C. LAWTON CO.

1125 Wall St.

Phone WESTmore 3291

Los Angeles

# CeCo Make A Good

One Mile or 10,000 Miles—Wherever  
Your Radio Reaches—CeCo Tubes Will  
Improve Reception

There's no "kick" in getting "distance" unless you can hear it clearly when you "hit." That's why it's so much more fun distance hunting when you use CeCo tubes. Even nearby stations come in sharper and more melodious.

If it's distance you want, be sure to use CeCo Mogul Power tubes. They'll give it to you without any other expense and require no rewiring.

Go to your CeCo dealer. He'll supply you with CeCo tubes made especially for your radio set.

## CeCo City Dealers

### SOUTHWEST

Walker Radio  
5835 S. Vermont  
Collinge Hardware Co.  
3425 S. Vermont  
Glen H. Demer  
6507 S. Kansas  
J. M. Andrews  
209 W. 18th St.  
Philco Sales & Service  
1514 S. Hope  
De Hoog Bros.  
6120 S. Broadway  
H. H. Walker  
1323 Venice Blvd.  
Sturgis Music  
4713 S. Broadway  
Nielson & Nielson  
3320 Avalon  
Tivoli Radio Shop  
4204 S. Central  
Phair Radio Co.  
242 E. Florence  
J. C. Rendler  
625 S. Main

Standard Radio  
417 W. Pico  
Hines Radio  
7322 S. Broadway

### HOLLYWOOD

Cutler Radio  
930 N. Western  
Barrows-Conkwright  
5545 Sunset Blvd.  
Hetzel Radio Service  
8303 Santa Monica  
Hollywood Elec.  
6656 Hollywood Blvd.  
Hollywood Radio  
709 N. Western  
Carmel Radio  
8165 Santa Monica Blvd.  
Melrose Radio  
5663 Melrose

### NORTHWEST

Atwater Radio Shop  
3208 Clendale Blvd.



D



C



B



A

# Tubes Receiver Better

Rigid Factory Inspection Insures  
Perfect Tubes

A rigid inspection and test of all tubes before leaving the CeCo factory insures distribution of only perfect tubes.

These tubes are excellent detectors and amplifiers, and may be used on any set—Radio frequency, Audio frequency, and reflex circuits.

CeCo Tubes Cost No More!  
You Must Be Satisfied—  
That's Guaranteed

*A. J. Tobey Co.*

Radio Accessory Jobbers

15th and Hope Sts.

WEstmore 4038

## Out-of-Town CeCo Dealers

CULVER CITY, H. E. Blunt  
6808 Putman  
PASADENA, Thomas & Sum-  
merville, 41 N. Broadway  
Webster Electric Garage  
100 E. Union  
LONG BEACH, Coast Radio  
245 E. Seventh St  
LANKERSHIM, W. L. Bain,  
5241 Lankershim Blvd.  
VAN NUYS, Van Nuys Music  
Co.  
Marsden Electric  
HERMOSA BEACH, C. Alex-  
ander, 530 Camino Real  
MONROVIA, Mack Music Co.  
REDLANDS, Dale E. Sliger  
State and Third St.  
BELLFLOWER,  
H. L. Peterson Shoppe  
Pacific and Mayne

SAN DIEGO, College Service  
Park and El Cajon  
Maryland Auto Supply Co.  
Seventh and F  
ANAHEIM, Caverley Radio  
217 W. Center  
EL CAJON, El Cajon Electric  
EL SINORE, Elsinore Plumbing  
& Electric  
GARDEN GROVE, W. E. Ash-  
ley  
BREA, Bennet's Radio  
BANNING, Daly Elect. Store  
LA HABRA, C. Perry  
117 W. Center St.  
POMONA, Falls Tire & Batt-  
ery Co.  
201 East 2nd St.  
POMONA, Falls Tire & Batt.  
Co.  
201 E. Second St.



E



F



G



H



I



## FOR THE BEST IN RADIO SEE US FIRST

Full, Complete Line of

### "B" Battery Eliminators

MAJESTIC  
PHILCO  
STERLING  
VELVETONE  
PRECISION

We Now Have the

### EXIDE

Power Units and Storage  
Batteries

Why not run your "A" Storage  
Battery off the light socket with one  
of these

### Trickle Chargers

ELKON  
HANDY  
BALKITE  
PHILCO  
ACME

Always a Fresh Stock of

### EVEREADY and BURGESS BATTERIES

Specialists in the Latest and Best  
Kits on the Market.

SILVER-MARSHALL  
BROWNING-DRAKE  
ROBERTS  
INFRADYNE

And Many Others

A Most Complete Line of  
RADIO CONSOLES AND  
CABINETS

If You Are Looking for Radio Fur-  
niture, See Us First. Here Is One  
of Our Many SPECIALS:



Special at  
**\$14.95**

Authorized Sales and Service for  
MAGNAVOX CROSLEY  
Radio Receiving Sets and Equipment  
Always at Your Service

Some Wonderful Prices on the Fol-  
lowing Few Sets:

KENNEDY  
WORKRITE  
QUADRAFORMER  
ALL-AMERICAN  
ALL-HENRY  
BROWNING-DRAKE

Information on Any Radio Subject  
Gladly Answered Free

**AMERICAN RADIO Co.**  
108 East 8th St.  
LOS ANGELES, CALIFORNIA  
TUCKER 8028  
A FIDELITY SOURCE REAL TO ALL

# MR. SARGENT

Inventor of the Famous

# INFRADYNE

Was in Los Angeles last week. He has left a few new wrinkles on this set with us that will greatly improve your old set. These changes do not take long and the costs are very low in proportion to the results.

The American Radio Co. has been associated with the **INFRADYNE** since the beginning. We have tested this circuit and found it perfect in all details. Of the hundreds of these sets that we have built and rebuilt, not one of them has been found wanting.

## WE DON'T GUESS—WE KNOW THE INFRADYNE

Or if it's a new set you are contemplating, we can faithfully advise you to step into our store and let us tell you why you need an **INFRADYNE**.

**Don't Forget That We Are the Pioneer INFRADYNE Specialists of Southern California.**

We can insert hundreds of letters from satisfied **INFRADYNE** owners.

## COMPLETE STOCK OF READY-MADE INFRADYNE SETS AND KITS

Come in and Look at a Real **INFRADYNE** in Our Store.  
May We Expect You Soon?

## AMERICAN RADIO CO.

108 East Eighth Street

LOS ANGELES, CAL.

TUcker 6028

Open Evenings Until 8:00 O'clock



# THIS IS A KIT YEAR

Buy the Kit of Parts for the Set you Want and Built it Yourself.  
Outstanding Among the New Circuits are the

## Infradyne - Silver Shielded Six Karas Equimatic - Madison Moore

All Parts for the IMPROVED INFRADYNE as Specified by Inventors now here. Complete Data in the Official Manual—25c. Send for it Now.

Complete stock of COAST COUPLER LONG WAVE RADIO FREQUENCY TRANSFORMERS, in stock for immediate delivery.

Look over the 630 Complete Kit of Parts for the SILVER SHIELDED SIX. Kit includes all Specified Matched Parts for the Set. Completely Shielded—using the famous 220 Audio and 221 Output Transformers, \$95.00—A Set Good for Years.

The Kit of Parts for the KARAS EQUIMATIC lists at \$60.20, and will produce a Set mighty hard to beat. Karas' latest.

MADISON MOORE "One Spot" Transformers are here. No more harmonics. Get a line on these—one of the biggest improvements of the year.

DEALERS: Park Next Door at Our Expense

## Radio Supply Co.

WHOLESALE

920 S. Broadway

VA. 6063

Los Angeles

New 1927 Catalogue Now Ready—Send For It

# Changes Are Made

Every day in Radio—and to keep your set abreast of the times—you will need new parts. The largest up-to-date stock of parts is at 920 South Broadway. Have your dealer pick up what you need.

Aneco Loops  
 Accuratune Dials  
 Acme Apparatus  
 Acme Trickle Chargers  
 Advance Crystals  
 Aero Products  
 Aerovox Wireless Products  
 Alden Mfg. Co. Parts  
 All-American Products  
 Amertron Products  
 Amperites  
 Amsco Condensers  
 Arco Coils  
 Balkite Chargers, Etc.  
 Benjamin Elec. Mfg. Products  
 Brach Products  
 Brandes Speakers  
 Branston Coils  
 Bremer-Tully Products  
 Camfield Coils  
 Carborundum Products  
 Cardwell Condensers  
 Carter Products  
 Ceco Tubes  
 C R L Var High Resistances  
 Chicago Kester Solder  
 Clarostat  
 Continental Condensers  
 Crescent Transformers  
 Daven Radio Parts  
 DeJur Rheostats  
 DeLuxe Products  
 Dietogrand Speakers  
 Dongan Products

DuHiller Condenser Corp.  
 Dudlo Mfg. Co. Wire  
 Eby Binding Posts  
 Ekko Ground Clamps  
 Electroad Products  
 Electrohot Soldering Irons  
 Elkon Chargers  
 Formlen Insulation Co.  
 Franco B. Batteries  
 Frost Products  
 General Radio Parts  
 Goodrich Rubber Panels  
 Hammerlund Products  
 Harkness Kits  
 Hedgehog Transformers  
 H-K Solderdip Lugs  
 Hosick Parts  
 Jefferson Products  
 Karas Products  
 Kelbrackets  
 Kellogg Parts  
 Switchboard Supply  
 Kodol Products  
 Kurz-Kasch Dials and Knobs  
 Leaf-Burkhard Cone Speakers  
 Lemco Transformers  
 Madison Moore Units  
 Marco Products  
 Mignon S. L. F. Condensers  
 Mueller Universal Clips  
 Muter Lightning Arrestors  
 Naidl TruPhone Units, Etc.

National Co. Parts  
 Paent Products  
 Penetrol Kits  
 Polymet Mfg. Co. Condensers  
 Premier Parts  
 Raco Aerial Wire  
 Radlall Co. Amperites  
 Rauland Lyric Transformers  
 Raytheon Tubes  
 Remler Products  
 Samson Transformers  
 Sangamo Condensers  
 Sensory Insulators  
 Silite Trickle Chargers  
 Silver Marshall Products  
 Spaulding Bakelite Panels  
 Steinite Eliminators  
 Sterling Meters and Testers  
 Stevens Tools  
 Tetrilite Hydrometers  
 Thordarson Transformers  
 Thorola Coils  
 Toke Condensers  
 Tom Mack Products  
 Tower Speakers  
 Trimm Cone Speakers  
 Universal Battery Clips  
 Vesta Power Units  
 Victoreen Parts  
 Weston Products  
 Willard Batteries  
 X. L. Variometers  
 Yaxley Products

**THORDARSON, ALL-AMERICAN AND MAGNAVOX  
 REPLACEMENT TRANSFORMERS IN STOCK**

**VESTA 35 and 50 Amp. and HOBCO A Power Units**

**ACME, GENERAL RADIO, ALL-AMERICAN, KODEL,  
 BALKITE, SILVER MARSHALL and STERLING  
 ELIMINATORS**

**ACME, STERLING, VESTA, BALKITE, TUNGAR and  
 SILITE TRICKLE CHARGERS**

DEALERS: Park Next Door at Our Expense

## RADIO SUPPLY CO.

WHOLESALE

920 S. Broadway

VA. 6063

Los Angeles

New 1927 Catalogue Now Ready—Send For It



# The Vitaphone

By K. G. ORMISTON

The recent showing of the Vitaphone in Hollywood resulted in criticism from some quarters as to the fidelity of reproduction which gave rise to comments inferring that the device had not reached a stage of perfection in its development. The writer did not witness the local showing, but he did attend the initial demonstration in New York City, and judging by that performance would state unhesitatingly that the Vitaphone is capable of reproduction and synchronization which should satisfy the most exacting motion picture audience.

With critical ears flapping I could detect slight defects in the reproduction of soprano voices, but in the violin work of Mischa Elman and finally the gorgeous voice of Giovanni Martinelli, the effect of realism was so perfect that I, for one, became wholly unaware of the existence of loud speakers, amplifiers, projectors and screens, and saw and listened to the living, breathing artist at his best. And such was the impression on the entire audience. The thunderous applause which followed Martinelli's last note was not for any mechanical device nor for the engineers who developed it, but for the famous opera singer whose actual presence was so strongly felt.

The Vitaphone is a direct result of the development of the modern phonograph where a microphone and electrical amplifier are used in the recording process and an amplifier and loud speaker in reproducing.

In the studio where the picture is being taken, a microphone or multiple microphone units picks up the voice and music. The fluctuating microphone current is then amplified through an amplifier similar to that used in broadcast stations and not greatly different from the audio-frequency amplifiers in modern receiving sets. The output of the amplifier causes a needle to vibrate in a groove in a revolving wax disc. So far the process is exactly the same as in the recording of modern phonograph records. The problem of keeping the sound recording in exact synchronism or unison with the light recording on the motion picture film is done by using an automatic camera driven by an electric motor instead of manually operated. The same motor is then used to turn the turn-table which carries the wax disc, hence the speed of the turning of

the disc and the speed of the movement of the film bear a fixed relationship to each other.

In the projection room of the theatre, the disc bearing the impressions of the speech and music vibrations again revolves upon a turn-table. A needle traveling in the grooves of the disc is attached to the diaphragm of a unit somewhat similar to a microphone, converting the mechanical vibrations to variations in an electric current. This current is then amplified tremendously through the usual methods, and operates a battery of loud speakers arranged strategically on, beside, or above the stage.

Now it is only necessary to maintain the same definite speed relationship between this disc and the projection machine that we did between the motion picture camera and the recording disc. This is accomplished by the simple expedient of combining the turn-table with the mechanism of the projector and driving both units by the same electrical motor. It is only necessary to start the picture and the sound recording at the same moment and exact synchronism will be maintained all the way through the picture.

Silence is essential in the studio where the Vitaphone recordings are made except for the sounds intended to be recorded.

The whole thing consists mainly of microphones, amplifiers and loud speakers, and its evolution may be traced back through the modern phonograph to radio. Therefore, since it is a by-product of radio, radio fans ought to know something about it, and that's why you are reading this.

The Vitaphone has great possibilities, but if it does no more than make available to all theatres the musical accompaniment which the producer of the film intended it should have, it will have done enough. Musical accompaniment can make or break a picture.

For example, the mighty climax of the "Ten Commandments" a la Grauman with an orchestra and organ together roaring out the majestic and impressive "Rock of Ages" creates an entirely different impression from the same scene on the screen accompanied by a blonde piano thumper playing "There Ain't no Maybe in My Baby's Eyes."

# Bremer-Tully

## Counterphase Receivers



### Counterphase-Eight, Cabinet Model

The new Counterphase is setting records East, West, North and South for Daylight Reception, the hardest test for any receiver. Scores of letters received attest accomplishments never before equaled on any sets except the B-T Eight.

SOLD BY FRANCHISE DEALERS

---

## McCLELLAND-FELTHOUSE CORPORATION

*Factory Representatives*

1358-60 S. Figueroa Street  
Los Angeles  
WEstmore 5586 and 6519

515-517 Eddy Street  
San Francisco  
Franklin 6226



## Here's How

(Editor's Note: A few suggestions on the puzzling radio situation as offered by a station owner.)

By Major Lawrence Mott, KFWO

During a program over my little station, latterly, I chanced to make mention of the fact that I had been asked by Senator Dill, father of the bill now in Congress, to let him have my views on the radio situation, and any suggestions that occurred to me. Listeners to KFWO have asked that I set forth my suggestions in our pages. Perhaps mine editor will permit?

Briefly: Put all stations off the air under at least 100 watts! And on the very reasonable theory that the man who cannot afford the upkeep of that amount of power cannot, ipso facto, afford the cost of good orchestras, artists, etc., for his microphones! I do not know if my readers are aware of it, but the ridding of the over-burdened airs of everything up to 100 watts would release at least 25 per cent of the congested air channels! It is all very well to say that these little fly-by-night 5-10-20-50 and 100 watt stations (of which there are a vast quantity infesting the broadcast channels) do not reach out! Their programs may not, but their carrier waves do, and that is what causes the pestilential whine and squealing so obnoxious to listeners-in. I suggested to Senator Dill that if a cleaning out up to 100 watts did not have the desired results, keep on cleaning up to 250 watts! And if there were still interference, clean out to 500 watts. With this much accomplished, fix the "ceiling" of power at 1000 watts.

I am very frank in the prophesy that if all stations were compelled by law to use master-oscillators in their transmitters (thus absolutely fixing their wave and keeping it sharp, withal); if, shall we say, everything under 250 (or 500) watts, and over 1000, were legalized off the air, then, oh air pals o'

mine, you would have splendid radio reception!

I can hear the yell from the smaller station owners as I write: "It's all very well for you, with plenty of money, equipment, to go to 500 watts, etc., to talk. But how about us who have also spent money in our equipment?" A very reasonable yell, I admit. But the laws of progress are immutable and unchangeable. Private property is condemned for improvements in cities, for instance. A board of appraisers decides what a just and fair price would be for the condemned property and, willy-nilly, the owner of it must conform—for the good of the whole. I suggested the same thing to Senator Dill, i. e., appraise all stations up to 100 watts (to begin with), legislate them off the air, and pay their owners. We are at once rid of a lot of troublesome mosquitoes. To be redundant, carry this scheme to 250 watts, or 500, if it is necessary to clear the air.

I see that Senator Walsh and a few others are holding up the bill in the Senate. If some sort of a bill does not pass at this session, everything except the most expensive super selective sets with loops, chiefly, might as well be used to light the morning fire, insofar as any use that their owners will get out of them.

(A copy of this issue of *Radio Doings* has been posted to every California Congressman and Senator.—EDITOR.)

### FOR SALE

One Motor Generator Set, consisting of two 800-volt 1½-amp. Generator, one 20-volt Exciter and Filament Generator and one 7½ H. P. 3 phase 220-volt motor.  
 Technical Laboratory of N. E. BROWN  
 Tel. THornwall 0270. 6805 S. Western Ave.  
 Los Angeles

# Radio Fan Logs Long List



• Indicating location of various stations received on Mr. Collins set.



J. E. COLLINS

American Seamless Tube Corporation  
 Los Angeles

Dec. 20, 1926.

Stewart Warner Service Station,  
 1800 So. Figueroa,  
 Los Angeles, Calif.

Dear Sirs:

I am enclosing a list of the stations I have received on my new Stewart Warner Watched radio. They are as follows:

- |          |          |          |          |          |          |
|----------|----------|----------|----------|----------|----------|
| K.F.I.   | C.N.R.V. | W.O.A.I. | K.L.D.S. | E.O.T.T. | K.V.K.F. |
| K.H.J.   | W.O.D.   | W.J.A.I. | K.P.J.F. | K.P.H.B. | K.P.T.C. |
| K.T.S.D. | K.Y.F.   | W.C.A.R. | K.M.F.   | K.P.O.D. | P.S.A.   |
| K.P.O.   | W.S.B.C. | T.H.R.   | T.P.W.   | T.S.A.N. | K.W.O.K. |
| E.P.H.C. | W.S.B.C. | K.M.Q.   | U.S.A.I. | G.P.O.T. | K.O.M.O. |
| K.D.S.   | W.B.B.E. | K.N.X.   | K.P.H.U. | K.S.C.   | K.H.T.   |
| E.L.A.   | W.D.V.L. | K.P.B.   | W.O.H.B. | K.P.S.B. | K.F.O.I. |
| K.P.D.S. | K.S.J.   | K.P.V.D. | T.M.S.F. | K.P.W.R. | K.S.C.P. |
| E.P.U.U. | K.P.A.   | K.P.P.C. | E.L.I.B. | K.S.W.   | K.M.B.   |
| K.F.O.A. | K.P.M.   | K.P.O.W. | E.K.C.D. | K.P.G.U. | E.L.S.   |
| K.T.C.L. | T.L.H.   | K.P.O.H. | W.D.A.P. | K.P.H.B. | K.M.D.   |
| K.O.A.   | W.H.A.O. | K.P.O.N. | K.O.U.   | K.P.T.U. | P.S.K.   |
| K.P.V.R. | W.K.R.C. | R.N.R.D. | K.V.W.   | W.D.A.E. | K.S.K.F. |
| E.L.O.   | W.P.E.L. | K.P.A.U. | W.D.A.E. | K.P.H.   | K.P.B.   |
| K.G.S.   | C.P.C.N. | R.S.D.   | K.P.H.   | K.P.H.   | P.O.O.O. |
| K.Q.P.   | D.O.P.R. | W.G.T.   | T.S.M.R. | K.V.U.V. |          |
| K.F.W.V. | K.P.K.   | W.O.C.   |          |          |          |
| W.S.B.   | K.S.V.H. |          |          |          |          |

The above stations are over a period of ten months and were all received on the loud speaker, very clear and loud. I am very much satisfied with my Stewart Warner set, as it is a great distance getter.

Yours truly,  
*J. E. Collins*

Stewart-Warner distributors report the receipt of many letters similar to the one reproduced here. Mr. Collins, who logged the stations shown, lives in southwest Los Angeles, where local interference is reputed to be bad. His letter proves the Stewart-Warner contention that the U. S. Navy circuit used in their receivers gives a high degree of selectivity without impairing either tone or volume.



## Highlights of Proposed Legislation

1. A commission of five members, appointed by the President and confirmed by the Senate, to serve for a term of six years each. The commission will have original jurisdiction in granting, renewing, and revoking all station licenses for the period of one year.

2. Thereafter, the Secretary of Commerce shall be the originating source, and only controversial matters appealed either by the Secretary or any party aggrieved shall be handled by the commission.

3. In the case of applications refused an appeal to the Court of Appeals of the District of Columbia, over the decision of the commission, is provided. In the case of licenses revoked, the appeal may be taken either to the above court or to the District Court of the United States in which the apparatus licensed is operated.

4. The Secretary of Commerce is given all administrative functions and full control over operators and their licenses.

5. Each commissioner shall be paid a salary of \$10,000 for the first year, and \$30 per diem plus traveling expenses thereafter.

6. The Act is to take effect immediately upon passage and signature by the President, except for and during the period of sixty days after taking effect, no holder of a license shall be subject to the penalties provided therein. This is in order that each case may be properly heard and renewals of licenses ruled upon.

7. All commissioners must divest themselves of any radio interests or holdings, directly or indirectly owned. This is in accordance with all other Government commission rulings. The disqualification of a candidate for the commission because of his interest in radio any time within a year prior to his appointment has been removed.

8. One of the most outstanding provisions of the agreement is the stipulation that the commission may issue only so many licenses as public interest, convenience, and necessity seem to demand.

9. Broadcasting licenses will be issued for a period of three years, and commercial message licenses for five years.

10. The waiver provision has been made to read: "Waives all claim of right to the use of any wave length as against the regulatory power of the United States."

11. A construction permit is required as a preliminary to the granting of a license.

12. Government stations may accept commercial business only in accordance with the provisions of the Joint Resolution under which they have been operating in the past, the wording of which has been written into the new bill.

13. The political clause has been modified to read that "if a **duly qualified** candidate for any public office shall be allowed the use of a station, equal opportunities shall be afforded to all other **duly qualified** candidates for the same office.

14. Section D, subsections a and b, of the Senate bill, which were really restatements of existing anti-monopoly laws, and, while adding nothing to these laws presented the possibility of misinterpretation in court action, have been stricken out.

15. A new preamble has been drafted for the bill, but it is reported that it is not satisfactory as yet. This has been one of the most troublesome points because of the intricate legal questions involved. We understand that the best legal advice available is being consulted today on this, and a satisfactory solution is expected.

# Radiograms

By CLOYD MARSHALL, JR.

## Hot Air

The perpetual mouthing of our political windjammers at times leads us to believe that they are working for public good. A moment of clear thought brings the conviction that a constructive worker is recognized by his accomplishments and not by a lot of meddlesome noise. Coolidge, Mellon and Hoover form the nucleus in the management of a thousand billion-dollar business—our government. We notice they don't keep us fanned with the warm winds of continual blustering.

## Numerous Stations

We received a letter the other day from one of our friends which contained the rather caustic and prophetic statement that if men and companies continued to build and put on the air new broadcasting stations they would become as numerous as gas stations. Every new gas station is a public service. Under the existing conditions every new broadcasting station is a public nuisance.

## Good Word Spoiled

"Mother" is one of the most beautiful words in the English language. All good men put their mothers on a pedestal of adoration and reverence. But when we transfigure that wonderful word by adding "in-law" the meaning is likewise transfigured, leaving a bad taste in the mouths of a good many people. It is a great pity that this should be so. The regrettable situation is not improved a bit by a couple of mothers-in-law who have recently exhibited some very cat-like qualities in New York and Los Angeles Courts.

# \$5

# DOWN

## puts a



# PHILCO

## SOCKET POWER

*In your home for a lifetime of service and satisfaction.*  
**Installed Free**

# PHILCO SALES & SERVICE Co.

1514 South Hope St.  
Phone WEStmore 9065

Phone or Mail Coupon for  
**Free Demonstration in Your Home**

Name .....

Address .....

Phone .....

Radio .....



# Broadcast Changes

## LIST OF NEW BROADCASTING STATIONS

Call	Owner	Wave Length		Power Watts
		Meters	Keys.	
WMBL	Benford Radio Studios, Lakeland, Fla.	410	731.3	10
WFLA	Boca Raton Radio Corp., Boca Raton, Fla.	440	681.4	1000
KFGO	Boone Biblical College, Boone, Iowa	300	999.4	10
KGEX	Central Radio Co., Muscatine, Iowa	256	1171	100
KGEZ	Flathead Broadcasting Assn., Kalispell, Mont.	352	851.8	100
WMBO	Radio Service Laboratories, Auburn, N. Y.	238	1260	200
WMBM	Seventh Day Adventist Church, Memphis	245	1224	10
WEBE	Roy W. Waller, Cambridge, Ohio	234	1281	10
WJPW	J. P. Wilson, Ashtabula, Ohio	239.9	1250	15

### CHANGES

WCSH, Congress Square Hotel Co., Portland, Me. Name changed from Henry P. Rines. Wave length changed from 256.3 meters, 1170 kilocycles, to 499.7 meters, 600 kilocycles.

WOK, Neutrowound Radio Mfg. Co., Homewood, Ill. Wave length changed from 217.3 meters, 1380 kilocycles, to 410 meters, 731.3 kilocycles; power changed from 5000 watts to 6000 watts.

KGFB, Albert C. Dunkol, Iowa City, Iowa, name changed from George S. Carson, Jr. Call letters changed from KFQP.

KGFA, Birt F. Fisher, Seattle, Wash. Call letters changed from KOMO, which were recently assigned to Fisher's Blend Station, Inc., Seattle, Wash.

KWLC, Luther College, Decorah, Iowa. Name changed from Norwegian Luther College. Call letters changed from KGDZ.

WDXL, WDXL Radio Corp., Detroit, Mich. Name changed from DXL Radio Corp.

WBOQ, Atlantic Broadcasting Corp., Richmond Hill, N. Y. Name changed from A. H. Grebe & Co., Inc. Power changed from 100 watts to 500 watts.

WAIU, The American Insurance Union at Columbus, Ohio, increased its power from 750 to 5000 watts.

WCAR, The Southern Radio Corp. station at San Antonio, Texas, went up from 500 to 5000 watts.

KOB, College of Agriculture of New Mexico, increased its power from 1000 to 5000 watts.

Although not yet licensed it is understood that the two following applications have been accepted and that licenses will be issued shortly:

WMBR, Premier Electric Co., Tampa, Fla., and WMBQ, Paul Golhoffer, Brooklyn, N. Y.

Other proposed stations are reported as follows: Salem, Ore., P. F. Peyton, and Salem Chamber of Commerce; Portland, Ore., Schaeffer Mfg. Co., and Seattle, Wash., University-Commercial Club.

### ONLY \$3.00 A YEAR

Have RADIO DOINGS mailed to your home every week. Fill out blank below. Either mail to us, or your dealer will be glad to take care of it for you. Please indicate whether NEW or RENEWAL.

HORWOOD PUBLISHING CO., 407 E. Pico St., Los Angeles,

CONGER & MOODY, Sharon Building, San Francisco, Calif.

Gentlemen: I enclose \$3.00, for which send me RADIO DOINGS for one year.

NEW—RENEWAL.

Name \_\_\_\_\_

Address \_\_\_\_\_



By CAREY PRESTON RITTMEISTER

With so many holidays and festive occasions coming in February, it is well to give some space to the planning of entertainment features which may be worked out, giving one the opportunity to repay social debts in some unique manner.

St. Valentine's Day might be the occasion of a bridge luncheon in your home, or a dance in the evening, working out in decoration and refreshments the "heart" motive which prevails.

Washington's birthday is another occasion for parties of every kind, costumes of the period lending beauty to the occasion, and it is true that these costume affairs arouse a greater interest among those present, than the ordinary costuming of today.

If you have only an average home, with no retinue of servants to relieve you of the labor of serving your guests, the buffet method of service is really delightful, lending informality to the atmosphere and giving to everyone that happy "at home" feeling which the hostess would like disseminated.

Work out some special idea, the American flag prevailing, or the hatchet and cherry tree—symbols ever present in all Washington celebrations.

Here is one suggestion! Convert your dining-table into a miniature Delaware River. Small mirrors placed in various places on the table which should be covered with shiny greenish-blue tissue paper, pulled into shape to suggest waves, the crests of the waves to be outlined with white. The foods to be served could be placed in boats to suggest the famous crossing of the Delaware. This would mean for your refreshments, cold meats, olives, salads,

etc., and if a mountain of hot buttered rolls awaits the completion of the crossing, with cups of delicious coffee, a satisfying buffet menu can be worked out.

On that side of the table first approached by the guests could be placed great numbers of little tents made of two "Snow-flakes," surmounted by a tiny flag. Under the tents should be an appetizer, consisting of a fruit cocktail, held together with gelatin, and made in a mold producing the tent form necessary to hold the crackers in place. The tiny flag can then be thrust into the peak of the cocktail. This appetizer should be on a small paper plate, and piles of snow suggested by a circle of whipped cream.

This sounds like a lot of work, but as I worked it out myself once, I know it is not at all difficult. Or course, you will enjoy it much more if you work out these details according to your own ideas. All I can do is to give the suggestion, as I have had many requests from friends of the Radio Shopping News, who have telephoned to me at KNX, asking for ideas.

One can hardly pass Washington's birthday without some reference to his famous boyhood words, "I cannot tell a lie." One feature of the entertainment might be a contest between the guests, the feat to be the telling of the biggest lie. Should any of you try this, I trust you will not have the experience of a certain men's club who entertained members of a rival club at lunch. A contest of this nature was staged, and one of the visiting men arose and said, "As a participant in this contest, I wish to thank you for a most enjoyable luncheon."





## HERE'S THE PROOF

Los Angeles, Calif., Feb. 1, 1927.

DX Editor:

Have read with great interest the many letters appearing on your "DX Club" page. I use a 5-tube Eria receiver with a 25-foot vertical aerial, and for a ground use a 1/2-inch copper tube 12 feet in length, buried vertically in the ground. I have logged practically every station of any importance in the United States, Mexico and Canada, and am proud of a letter of verification from Station 4QG at Brisbane, Queensland, Australia, which operates on 5000 watts and 385 meters, which I am enclosing and hope you can find space to publish.

K. F. THOMPSON,  
5482 Madden Ave.

QUEENSLAND RADIO SERVICE  
Station 4QG

Brisbane, 20th December, 1926.

Dear Sir:

I am in receipt of your letter of 14th November reporting reception from Station 4QG, and desire to thank you very much indeed for your courtesy in reporting same to me.

Examination of the official log at this station confirms your report of reception, and I would take this opportunity of congratulating you.

I am enclosing herewith official card from the station.

Yours faithfully,

J. W. ROBINSON,

Director,

Queensland Radio Service.

## PROUD OF HIS

Alturas, Calif., Jan. 22, 1927.

DX Club:

I read every copy of DX Club with interest. I am rather proud of my DX. I use a Plio Six-Tube Set with two dials, 100 feet of stranded antenna, 30 to 40 feet high and a copper tank for a ground.

I have logged 165 stations to date: WJZ, WGHP, WCX, WIOD, WSMB, CZE, CYJ, CKCK, CJWE, CJCA, are some of my most distance ones. 2BL, Sydney, Australia, comes in with good loud speaker volume.

I have written for verification from 5CL, 4OG, JOAK, JOBK, and JOEK.

This is all loud speaker reception.

N. R. STEVENS.

## FOR DYADYNE OWNERS

Los Angeles, Jan. 2, 1927.

DX Club:

Have a 4-tube Dyadyne set (home-made). Am located about 3 miles from all locals and 4 miles from Hollywood stations. I have received the following stations: WBBM, WOK, WENR, WORD, WWSW, WLIB, WJAZ, WLS, WEBB, WHT, WSBC, WGES, WGN, all in Chicago; KDKA, KFAB, KFAU, KFKB, KFKX, KMMJ, KMOX, KMA, KOB, KSBA, KVOO, WEAO, WGHB, WGHP, WJZ, WLW, WOS, WSAI, WWJ. Have also received WFCN, CNRV, CNRR, CFBC; in Australia 2BL and 4QG; in Japan JOAK. Most of them received between 5 and 6:30, all on the speaker.

If any other fan has built this set (described in July "Radio News") I would like to hear from him.

NELSON HARSHMAN,  
2007 Preston Ave.

## PAGING MR. REYNOLDS

Santa Barbara, Calif., Jan. 21, 1927.

Radio Doings:

In respond to Gen Reynolds question on distance on a Freshman Masterpiece, I would like to say I have a Freshman Masterpiece. My antenna is about 50 feet high, five strands of wire, 60 feet long. We have very good reception and are very pleased with our set.

Some of the station out of California we have had are: KDYL, KFBL, KMMJ, KWUC, KSO, AMB, KFOX, KSL, WTLA, KFAD, WDAE, WORD, WWSW, KMOX, KOWW, KFKX, CYA, KJR, JOAK, Japan and many others.

KENNETH POLAND.

## RADIO REPAIR MAN?

When late on a cold night a man clad only in underwear and trousers was found hanging from a second floor window ledge, the lady of the house explained to her husband, who suddenly appeared, that she had called in a man to adjust her radio.

# Your Radio Investment— What Is It Worth Today?



*Are you secure in the feeling that its monetary value is not depreciating rapidly due to design obsolescence?*

*Is it giving you the fullest measure of enjoyment in its complete and perfect reproduction of broadcast music?*

STROMBERG-CARLSON is complete insurance against loss of original investment due to price reductions. The policy of this great telephone manufacturing company is never to reduce a price.

Your investment is also secure in the understanding that STROMBERG-CARLSON is a year in advance of the field. You now obtain next year's performance for the ordinary set.

Come and hear for yourself!

## The RADIO STUDIO

STROMBERG-CARLSON EXCLUSIVELY

ON WILSHIRE BOULEVARD

at 3831

*"A Perfect Setting  
for a Perfect Set"*

Washingt  
4095



# THE TROUBLE SHOOTER



By FORBES W. VAN WHY  
A. I. E. E., A. I. R. E.  
Technical Editor Radio Doings



**QUESTION**—C. E. E., Los Angeles, Calif.: I have no technical knowledge of radio, but have been reading everything I could secure on the superheterodyne circuit. I have the DX fever, and would like the most sensitive receiver that it is possible for radio engineers to build. Which is the best, Infradyne or Radiola Super? Will enclosed clipping help me if I comply?

**ANSWER**—There are many good receivers on the market. As far as sensitivity is concerned, a superheterodyne is conceded to be the best. Extreme sensitivity is not always desired, due to certain locations being near terrific interference and power inductions, etc. However, if extreme sensitivity is what you wish, the super cannot be beat. The Infradyne is also a very excellent receiver, and is giving satisfaction. If you are a true novice, buy a super already built and made by a reliable concern. Please remember that for best results, an extremely sensitive receiver is not necessarily recommended, especially in a vicinity such as yours, as it will bring in many signals and disturbances which are undesirable. Quality should come first. The clipping is O. K. if properly handled.

The question often arises as to which is the better, several wires or a single wire antenna system for reception purposes. To state the case from a neutral point of view, there is absolutely nothing to be gained by using several wires for reception purposes. We quote the navy high-powered receiving stations in this case. Now, for transmission, you are up against an entirely different proposition, and if the radio fans ever start to become enthused in radio transmission, then we shall deal with the topic in the RED BOOK.

**QUESTION**—S. S. Nelson, Cavanea, Sonora, Mexico: I have had a 6-tube Radiola Superheterodyne for 3 years, and have not received any long wave stations on it as yet. Lately, find it necessary to open battery switch wide in order to get anything at all. Put in new tubes, and they light fine. Am at a loss as to the trouble.

**ANSWER**—We are glad to hear from one so far across the border and to know that our Red Book penetrates into Mexico. First of all, you cannot tune to the really long waves on your receiver, and there is really nothing that can be done about it. Your set is strictly a broadcast receiver, and is designed to cover the wave bands used by broadcasting stations. Your indications point to defective "B" batteries. Suggest a voltage test. If "B" batteries check normal, probably your tubes are about due for rejuvenation or complete replacement. If they are a new set of tubes, try shifting them about in the various sockets until a good arrangement is made. If interested in a long wave set, write me and I will be glad to send you drawings, etc.

The difference between wireless and radio! None at all. While the type of apparatus used in each case differs, the underlying principles are identical. To say it short and not be technical, when it was called "wireless," dots and dashes were sent and received. Now, music and voice are sent and received, and the term "radio" has been adopted by the general public. The point is, it's all the same. There are lots of old-time wireless instruments aboard sea-going vessels doing first class radio duty. The men who operated this same equipment under the title of "Wireless Man," are still at it as "Radio Operators."

Announcing  
A New  
**CeCo  
Tube**

The latest CeCo engineered development is now ready for distribution. It is a

**Radio Frequency  
Amplifier**

This tube is especially designed for the Radio Frequency stages of any receiving set where its surprising efficiency marks an outstanding achievement in Radio tube development.

**List Price \$3.00**

As with every other CeCo product, your satisfaction is guaranteed.

If your dealer does not have them in stock he can get them for you through authorized local jobbers.

Accept No Substitutes  
Demand CeCo Tubes

C. E. Manufacturing Co.  
Providence, R. I.

Pacific Coast Representatives

**B. KRUGER & CO.**  
500 North Huntley Drive  
West Hollywood, Calif.

(Sherman P. O.) Tel. OX. 3897

**ELECTRIFY**  
your  
**RADIO SET**  
with a  
**BRACH**



**CONTROLIT**

THE HEART OF THE POWER PLANT

Place Complete Control of Power Plant and Set in One Switch—the Set Switch Itself.

Over 75,000 used within the first four months—adopted standard by every leading set and power supply manufacturer.

**Price \$4.75**

West of the Rockies

**Brach  
Radio Products**

L.S. BRACH MFG. CO.  
NEWARK, N.J. TORONTO, CAN.



Makers of the Famous  
BRACH LIGHTNING ARRESTERS



**DAILY**

(Except Sunday)

**12:30 to 1:30**  
**Community Program****KMTR**MONDAY  
**POMONA**TUESDAY  
**WHITTIER**WEDNESDAY  
**ANAHEIM**THURSDAY  
**GLENDALE**FRIDAY  
**SANTA ANA**SATURDAY  
**CATALINA**

Direction of

**WALTER BIDDICK**487 Chamber of Commerce Bldg.  
WESTmore 9137 LOS ANGELES**The Man on the Cover**

Bob Nelson, whose photo is shown on our cover, is the composer of a number of our popular song hits, among them "Hello, Blue Bird." He also having made a decided hit with New York theatregoers in "Passing Show," "Broadway Brevities" and "Artists and Models." Nelson, known as the "Dixie Dynamo," is filling an engagement at the Metropolitan Theatre, Los Angeles. He, with Rex Taylor, scenario writer, will be prominently featured on the KNX midnight frolic, February 12th, the latter, the writer of "Her Big Night," featuring Laura La Plante and "The Cheerful Fraud," featuring Reginald Denny, promising some original numbers with his "Personality-Plus Ukulele."

**There Are**  
**"57 Varieties"**

of

**Ukulele Instruction**  
**Books**

Practically all of them require that the student be able to read music in advance. Most of us, however, buy a "uke" with the idea of mastering a handful of chords to accompany ourselves in the singing of popular songs, avoiding a lot of technique.

**The "Rex Ukulele Transposing**  
**Chart"**

gives immediate command of all the chords which one is likely to use.

Slip a dollar bill into an envelope and mail to the following address:

**Rex Taylor**  
**Box 535**  
**HOLLYWOOD**  
**California**

# Your radio will give more pleasure with a Rola Cone Speaker and Cunningham Tubes

Tubes and speaker are the vital elements of satisfactory radio re-creation . . . to derive the utmost pleasure from a set, only the finest should be used.

In justice to any radio, it should be heard with a Rola Cone Speaker and Cunningham Tubes, regardless of the name plate on your set, performance will be greatly improved!



## Cunningham Tubes

\*\*\* have been the standard of quality since 1915. They embody many superior features, and will improve receptivity of any radio. Cunningham filaments last longer because they are made of thorium impregnated tungsten, and are self-reactivating.

Made in all sizes . . . and priced \$2.00 to \$6.00.



## The Rola Cone Speaker-

This Re-Creator of tone adds pleasure to radio operation. The Rola Cone gives rare naturalness and freedom from distortion in high and low ranges of sound that is extremely pleasing.

The rich rubbed finish and graceful design are in keeping with its tonal charm. *It sells at \$28.50.*

### The New Pedestal Type

\*\*\* has met with great popularity because of its attractiveness and practicality.

*The price is only \$32.50.*



-More than 150 Stores in the West-

## Western Auto Supply Co.

Main Store - 1100 South Grand Ave.  
LOS ANGELES





## SUNDAY TIME TABLE

ALL TIME TABLES ADJUSTED  
TO PACIFIC TIME  
(X) Indicates Station is On the Air

10-12 A.M.	12-2 P.M.	2-4 P.M.	4-6 P.M.	STATIONS		6-8 P.M.	8-10 P.M.	10-12 P.M.																													
10:00-10:30	10:30-11:00	11:00-11:30	11:30-12:00	12:00-12:30	1:00-1:30	1:30-2:00	2:00-2:30	2:30-3:00	3:00-3:30	3:30-4:00	4:00-4:30	4:30-5:00	5:00-5:30	5:30-6:00	CALL	Wave Length Meters	Power in Watts	STATION	6:00-6:30	6:30-7:00	7:00-7:30	7:30-8:00	8:00-8:30	8:30-9:00	9:00-9:30	9:30-10:00	10:00-10:30	10:30-11:00	11:00-11:30	11:30-12:00							
<b>SOUTHERN CALIFORNIA</b>																																					
	X	X													JKGEF	517	1000	Los Angeles					X	X	X												
X	X	X	X					X	X						JKFI	467	4000	Los Angeles	X	X	X	X	X	X	X	X	X	X	X	X	X	X	X	X			
			X	X											JKFCR	413	500	Santa Barbara						X	X												
X	X	X	X	X											JKHJ	405	500	Los Angeles			X	X	X	X	X	X	X	X	X	X	X	X	X	X			
	X	X													JKMIC	387	500	Inglewood			X	X	X	X													
															JKFBC	380	50	San Diego				X															
X	X	X	X					X	X	X	X	X	X	X	XKMT R	370	500	Hollywood	X	X	X	X	X	X	X	X	X	X	X	X	X	X	X	X	X		
X	X	X	X					X	X	X	X	X	X	X	JKNX	337	700	Los Angeles			X	X	X	X	X	X	X	X	X	X	X	X	X	X	X		
	X	X													JKPSN	316	1000	Pasadena			X	X															
X	X	X	X									X	X		JKFWC	295	200	San Bernardino									X	X	X	X	X	X	X	X	X		
	X	X	X	X											JKTBI	294	750	Los Angeles	X	X	X	X	X	X	X	X	X	X	X	X	X	X	X	X	X		
	X	X	X	X				X	X	X	X				JKFSG	275	500	Los Angeles			X	X	X	X	X	X	X	X	X	X	X	X	X	X	X		
							X	X							JKFWB	252	500	Hollywood								X	X	X	X	X	X	X	X	X	X		
							X	X							JKFSD	248	1000	San Diego																			
X	X	X				X	X				X	X	X	X	XK NRC	238	1000	Santa Monica	X	X	X	X	X	X	X	X	X	X	X	X	X	X	X	X	X		
	X	X	X			X	X	X	X	X	X	X	X	X	XK FON	233	750	Long Beach	X	X	X	X	X	X	X	X	X	X	X	X	X	X	X	X	X	X	
	X	X	X	X											JKPPC	229	50	Pasadena			X	X	X	X													
															JKFQZ	228	500	Hollywood			X	X	X	X	X	X	X	X	X	X	X	X	X	X	X		
				X	X						X	X	X	X	JKFWO	211	250	Catalina	X	X	X	X	X	X	X	X	X	X	X	X	X	X	X	X	X		
															JKFVD	205	500	Venice											X	X	X	X	X	X	X		
<b>NORTHERN CALIFORNIA</b>																																					
X	X						X	X	X	X					JKPG	428	1000	San Francisco	X	X	X	X	X	X	X	X	X	X	X	X	X	X	X	X	X		
	X	X													JKYA	400	1000	San Francisco					X	X													
	X	X	X				X	X	X						JKGO	381	4000	Oakland			X	X	X	X	X	X	X	X	X	X	X	X	X	X	X	X	
X	X	X	X	X											JKQW	333	500	San Jose					X	X	X	X											
X	X	X	X	X											JKTAB	303	1000	Oakland							X	X	X										
															XKFR C	268	50	San Francisco	X	X	X	X	X														
	X	X													JKFUS	256	50	Oakland						X	X	X											
X	X														JKRE	256	100	Berkeley																			
				X	X										JKFWI	250	500	San Francisco			X	X	X	X	X	X	X	X	X	X	X	X	X	X	X	X	
							X	X	X	X	X				JKGTT	207	50	San Francisco						X	X	X											
<b>NORTHERN AND WESTERN STATES</b>																																					
	X	X	X	X				X	X	X	X	X	X	X	XKGW	481	1000	Portland					X	X	X	X	X	X	X	X	X	X	X	X	X	X	
X	X	X													JKFAC	435	2000	Calgary																			
	X	X	X												JKJR	384	20M	Seattle					X	X	X	X	X	X	X	X	X	X	X	X	X	X	X
															JKLZ	384	500	Denver			X	X	X	X													
X	X	X	X												XJKOA	322	6000	Denver			X	X	X														
															JKOIN	319	1000	Portland						X	X	X											
X	X	X	X	X	X	X									JKOMO	308	1000	Seattle	X	X	X	X	X	X	X	X	X	X	X	X	X	X	X	X	X	X	X
X	X	X			X	X									JKSL	300	1000	Salt Lake City			X	X	X	X	X												
X	X	X	X												JKMO	250	500	Tazoma	X	X	X	X	X	X													

Hours Shown as Submitted by These Stations, For LX Schedule see Page 36.

**Authorized Dealer for Fada and Crosley Sets**

Sales, Service and Exchange

Battery Charging, 50c—Tubes Rejuvenated Free

**DAVIS RADIO CO.**

Time Payments if Desired.  
Open Evenings and Sundays

Westmore 6948  
2817 S. Main St., Los Angeles



























Rear view above shows large compartment with ample space for batteries, battery charger, or battery eliminator, which are entirely concealed from view. Back is open for ventilation of batteries.



(Pat. Applied For)

Model 200, with 22-inch  
Cone Loudspeaker



Above is shown the Cone Loudspeaker, with its Panel, which is quickly and easily removable, allowing access to all batteries, battery charger, battery eliminator, or other equipment and wiring.

Model 200

**\$35**

Console with Cone  
Loudspeaker  
Ready for Set and  
Batteries

This Windsor Cone Loudspeaker Console is equipped with a 22-inch Windsor Cone Loudspeaker. Its top is 30 in. x 17 in. and is 29 in. high. The battery shelf provides ample space for batteries, charger, battery eliminator and other equipment. Beautifully finished in either Mahogany or Walnut color.

## A Revelation in Radio Reproduction

Model 210  
22-inch Cone  
Loudspeaker  
with Panel and  
enamel back

**\$18.00**



(Pat. applied for)

beauty, just as it entered the microphone.

...

This 22-inch Windsor Cone Loudspeaker will reproduce the softest crooning lullaby in a softly lighted room, or the full throated march music of a band in an auditorium—both with perfect fidelity of sound and tone. The Windsor Cone Loudspeaker Console is the greatest value in the world of radio. When compared with the average cost of cone-type loudspeakers of even similar size, the cost of the complete Windsor—cone loudspeaker and console—is amazingly low.

...

The Windsor Cone and Horn Loudspeakers, combined with attractive pieces of furniture in many models, are being demonstrated by recognized dealers everywhere. Go to your dealer today and examine this astonishing new Cone Loudspeaker Console. If he happens not to have one, write to us and we will tell you the name of the nearest store at which you can see and hear one.

...

### NOTE TO DEALERS

Write or wire today for details of the highly profitable Windsor selling line.

At last—a cone loudspeaker that reproduces *all* the tones as they are broadcast. From the deep voiced tuba of an orchestra to the softest note of a vocal solo—*every* tone—*every* sound is reproduced in all its

As a piece of furniture, the Windsor Cone Loudspeaker Console is of such manifest high quality and attractive design as to be a welcome addition to any home. Finished in Mahogany or Walnut color.

## WINDSOR FURNITURE CO.

World's Largest Manufacturers and Originators of  
Loudspeaker Consoles

1420 Carroll Avenue, Chicago, Illinois

Los Angeles Branch: 917 Maple Avenue

R. D. 22

### WINDSOR FURNITURE COMPANY.

Electrical Department,  
917 Maple Ave., Los Angeles.  
Send me FREE and without  
obligation circulars of the Windsor  
line of Cone and Horn Loud-  
speakers combined with pieces of  
furniture, and name of nearest  
dealer.

Name.....  
Address.....  
Dealer's Name.....  
City.....State.....



## Schedule of DX Stations

Call Letters	Location	W. L. Meters	Power Watts	Schedule of Concert and Dance Music
WBBM	Chicago	226	1500	Daily except Mon. and Fri., 6 to 10 p. m.
WBO	Chicago, Ill.	226	1000	Mon., 4 to 6 p. m.; Fri., 10 to 12 p. m.
WOWO	Ft. Wayne, Ind.	227	1000	Wed., 5:15 to 10 p. m.
KUT	Austin, Texas	231	500	Mon., Wed., 5 p. m.; Sun., 9 a. m.-1:30 p. m.
WHT	Chicago	238-400	3500	Daily except Sun. and Mon., 8 to 10 p. m.
WWAE	Plainsfield, Ill.	242	5000	Daily except Sun., 7 to 10 p. m.
WOOD	Grand Rapids	242	1000	Fri. and Sat., 7 to 10 p. m.
WBAL	Baltimore	246	1000	Mon., Tues., Thurs., Fri., 5 to 9 p. m.
WRVA	Richmond, Va.	256	1000	5:30 to 8 p. m.
WKAF	Milwaukee, Wis.	261	5000	Mon., Wed., and Fri., 8 to 9 p. m.
WCAR	San Antonio, Texas	263	6000	Daily except Sun., 6 to 8 p. m.
WENR	Chicago, Ill.	266	1000	Daily except Sun. and Mon., 6 to 7 p. m.
WGHB	Clearwater, Fla.	266	500	Daily except Sun., 5:30 to 7 p. m.
WGHP	Detroit	270	1500	Wed., 5 to 7 p. m. Thurs. and Fri., 7-9 p. m.
KGU	Honolulu	271	500	Thurs., Fri., Sun., 10 to 11:30 p. m.
WHK	Cleveland, Ohio	273	1000	Daily except Sun., 3:30 to 4:30 p. m.
WORD	Chicago, Ill.	275	5000	Thurs. and Sat., 6 to 8 to p. m.
WGBU	Tulford, Fla.	278	500	Daily except Sun., 5 to 10 p. m.
KFAU	Boise, Idaho	280	750	Thurs., 8 to 10 p. m.
KMOX	St. Louis	280	1500	Daily except Sun., and Thurs., 1 to 9 p. m.
WMS	Nashville, Tenn.	282	1000	Mon., Wed., Sat., studio concert 8-10 p. m.
WMBF	Miami Beach, Fla.	284	5000	Daily, 4 to 5:30 p. m.; 7 to 11 p. m.
WAIU	Columbus, Ohio	294	750	Fri., 4 to 7 p. m. Mon., 6 to 8 p. m.
KPRC	Houston	297	500	Sat. and Wed., 8 to 10 p. m.
WPG	Atlantic City	300	500	Daily, 6 to 8 p. m.
WGN	Chicago	303	1000	Daily except Sun., 8 to 9 p. m.
WLIB	Chicago	303	4000	Daily except Sun., Mon., Wed., 9 to 11 p. m.
KOIL	Council Bluffs	306	500	Daily except Sun. and Wed., 4 to 9 p. m.
KDKA	Pittsburgh	309	1000	Daily ex. Sun. 3 to 8:30 p. m. Sun. 3 to 6 p. m.
WGR	Buffalo	319	750	Mon. and Fri., 6 to 10 p. m.
WKRC	Cincinnati	326	1000	Sun., Tues., Thurs., Sat., 8 to 10 p. m.
WSAI	Cincinnati, Ohio	326	5000	Tues., 3:30 to 8 p. m.; Sat., 5 to 8 p. m.
WJAZ	Chicago, Ill.	330	1500	Sun., 4 to 6 p. m.; Tues., Fri., Wed., 6-9 p. m.
WBZ	E. Springfield, Mass.	333	2000	Daily except Sun., 3:30 to 7:30 p. m.
KFAB	Lincoln, Neb.	341	1000	Mon., Tues. and Wed., 6:10 to 8:30 p. m.
WCBD	Zion, Ill.	345	5000	Tues., Thurs., 5 to 8:30 p. m.
WLS	Chicago	345	5000	Wed., Fri., Tues., 4 to 10 p. m.
WWJ	Detroit	353	1000	Daily except Sat. and Sun., 4 to 5 p. m.
CFCF	Toronto	356	2000	Wed., 8 to 9 p. m.
WHB	Kansas City	366	500	Sun., 8 to 11 p. m. Tues., 5 to 3 p. m.
WDAF	Kansas City	366	1000	Daily except Sunday, 9:30 to 11 p. m.
WJJD	Mooseheart, Ill.	370	1000	Daily except Sun., Mon., 6 to 7, 8 to 9 p. m.
KFBU	Laramie, Wyo.	375	500	Mon., Wed., Fri., 8 to 10 p. m.
KVOO	Elston, Okla.	375	1000	Daily except Sun., 9 to 11 p. m.
KTHS	Hot Springs, Ark.	375	1000	Daily 7 to 9:30 p. m.
WHAZ	Troy, N. Y.	379	1000	Mon., 5 to 7:30 p. m.
WYG	Schenectady	385	500	Daily except Sun., 3 to 9 p. m.
WEAR	Cleveland, Ohio	389	1000	Tues., Thurs. and Fri., 4 to 8 p. m.
WTAM	Cleveland, Ohio	399	1000	Daily except Sun., 3 to 9 p. m.
PWX	Havana	400	1000	Daily except Thurs., 5 to 8 p. m.
WJY	New York, N. Y.	405	5000	Fri., 4:30 to 8:30 p. m.; Sun., 5 to 7:30 p. m.
CYJ	Mexico City, Mexico	410	1000	Daily except Sun., 7 to 8 p. m.
CFCF	Montreal	411	2000	Mon. and Fri., 5:30 to 8:30 p. m.
KCAC	Montreal	411	1500	Tues. and Thurs., 6 to 9 p. m.
KFQB	Ft. Worth, Texas	412	2500	Daily except Sun. and Wed., 6 to 10 p. m.
WCCO	St. Paul, Minn.	416	5000	Wed., 12:30 to 9:30 p. m.
KFXF	Denver	422	500	Mon., Tues., Sat., 7:30 to 9:30 p. m.
WLW	Cincinnati	422	5000	Sat., 5 to 6 p. m. Mon., 5 to 8 p. m.
WSB	Atlanta, Ga.	428	1000	Dly. ex. Sun., 6-7 p. m.; ex. Wed., 8:45-10 p. m.
AT9	Fort Bragg, N. C.	434	750	Tues., Thurs., Sat., 5 to 7 p. m.
NAA	Arlington, Va.	435	1000	Wed., 4:45-5 p. m.; Fri. 5:45-6:20 p. m.
WQJ	Chicago	447	500	Daily except Sun. and Mon., 8 to 12 p. m.
WMAQ	Chicago, Ill.	448	1000	Daily except Sun. and Mon., 6 to 8 p. m.
WJZ	Beaumont, N. J.	454	5000	Daily except Sun., 1 to 3 p. m.
WBAP	Ft. Worth, Texas	476	5000	Mon., Wed. and Fri., 9 p. m. Popular prog.
CYL	Mexico City	480	1000	Sun., Tues., Fri., 8 to 9 p. m.
WEAF	New York City	491	5000	Daily except Sun., 3 to 9 p. m.
WOO	Philadelphia	508	500	Daily, 4:30 to 5:30 p. m.
WCX	Detroit	517	5000	Daily except Sat. and Sun., 4 to 8 p. m.
WOW	Omaha	525	1000	Tues. and Thurs., 4 to 9 p. m.
WNYC	New York, N. Y.	526	1000	Daily except Sun., 3 to 8 p. m.
WHO	Des Moines	526	5000	Daily except Sat. and Wed., 9 to 10 p. m.
KYW	Chicago	536	3500	Daily except Sun. and Mon., 3 to 9:30 p. m.
KSD	St. Louis	545	500	Thurs., Fri. and Sat., 7 to 9 p. m.

Hours Shown as Submitted by These Stations Adjusted to Pacific Standard Time

Hear Our 6-Tube Balanced Crosleys, Childs Lab., 1187 W. 24th

# BOSCH RADIO



McGEARY ELECTRIC  
TELEPHONE 549  
SANTA BARBARA, CALIF.

January 8, 1927.

Mr. Shay,  
Reiman Wholesale Co.,  
Los Angeles, Calif.,

Dear Sir:

*We received a shipment this morning of the new circulars picturing the new cabinet model Imperial Cruiser Bosch radio.*

*We wish to extend to the Bosch Company through you, and to you also, our highest compliments for giving the Radio Public this remarkable set. It is our idea of what the public wants and wish to place our order herewith for the first one available for shipment to your dealers.*

*We have sold one of the Cruisers and three of the Amboradas to date and can say with first hand knowledge that they are the acme in radio in their respective classes. We feel certain that we will be able to place a great many of these sets before the summer closes down on us and also that being able to work the Amborada on a short aerial will make summer sales possible.*

*Wishing you all the success possible and assuring you that we regard your judgment in the selection of the Bosch Radio as excellent, we are,*

*Yours very truly,*

McGEARY ELECTRIC,  
L. F. McGeary, Jr.

## Reiman Wholesale Electric Co.

218 to 228 East Third St.

Los Angeles

WHOLESALE ONLY

MEtropolitan 4280



# Buy Your Pemco Today

Because you will never know real consistent Radio satisfaction until you use a Pemco automatic socket power.

No matter what kind of electric light current you have (50 or 60 cycle) or what kind of a Radio, a Pemco will give you full satisfaction.

Your dealer will install a Pemco free of charge. He will arrange the easiest of terms. He stands ready to render every service. See one of these dealers today.

Sherman, Clay & Co.  
948 Santee St., Los Angeles

Distributors

The Electric Corp.  
1050 Santee St., Los Angeles

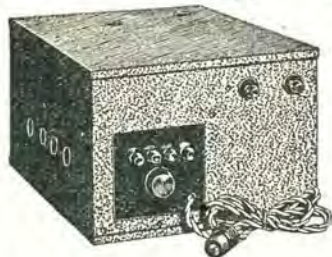
Pacific Wholesale Radio, Inc.  
1320 S. San Pedro, Los Angeles

# Pemco

*Automatic*

"A" and "B"

## Power Unit



# Pemco

## DEALERS

### Los Angeles

PARMELEE DOHRMANN  
436 S. Broadway  
VERMONT CENTER RADIO  
Co.  
6219 S. Vermont Ave.  
TRIANGLE RADIO  
587 S. Sycamore  
MONARCH RADIO  
2189 W. Washington  
VERMONT MUSIC Co.  
826 S. Vermont Ave.  
So. CALIF. RADIO Co.  
2135 W. Pico St.  
BROADWAY DEP'T STORE  
Fourth and Broadway  
J. C. RENDLER, INC.  
625 S. Main St.  
W. H. SHEPARD  
4402 Avalon  
AMERICAN ELECTRIC  
2428 Vermont  
L. A. MUSIC Co.  
4410 S. Broadway

### Alhambra

ALHAMBRA MUSIC Co.  
BAIRD MUSIC Co.  
326 W. Main St.

### Anaheim

E. R. CAUERLY  
DUNHAM & TRIPE

### Armona

GUY R. CONRAD

### Beverly Hills

BEVERLY CYCLE &  
NOVELTY WORKS  
422 Canon Dr.

### Burbank

COLLINS RADIO SHOP  
223 E. San Fernando Blvd

### Brea

BENNETT RADIO  
Bellflower  
S. E. MOORE

### Compton

FOUR SQUARE RADIO  
Culver City

CULVER CITY RADIO Co.

### Downey

H. P. MEYERS HARDWARD  
Co.  
DARNELL ELECTRIC SHOP  
119 N. Crawford

### Fullerton

RADIO STUDIO  
112½ N. Spadra Ave.

### Fillmore

H. E. WILLIAMS MUSIC  
SHOP

### Glendale

HUGHINS & SONS  
142 N. Brand Blvd

### Hermosa

CALIFORNIA RADIO SHOP  
713 Camino Real  
FOWLER'S MUSIC STORE

### Hollywood

HOLLYWOOD RADIO Co.  
709 N. Western Ave.  
HETZEL RADIO Co.  
8303 Santa Monica Blvd.

### Huntington Park

H. C. DOUGHERTY

### Lankershim

LANKERSHIM MUSIC Co.

### Long Beach

JENSEN RADIO Co.  
107 American Ave.  
KELM RADIO  
215½ E. Fourth St.

### La Jolla

G. G. WILLIAMS  
Lompoc

PENDLEY BROS.  
129 S. H St.

### Monterey Park

BAIRD RADIO SHOP  
313 W. Garvey St.

### Ocean Park

MARINE RADIO Co.

### Orange

COSSART'S RADIO SHOP  
100 W. Chapman Ave.

### Ontario

FORD BROS.

### Oxnard

H. C. MARVIN  
137 Fifth St.

### Pasadena

PREMIER RADIO CORP.  
11 E. California St.  
WILSON MUSIC Co.  
180 East Colorado St.  
PASADENA MUSIC SHOP

### South Pasadena

RADIO ELECTRIC  
1165 Fair Oaks

### Redondo

J. H. THORPE  
A. H. COSTLEY

### Riverside

RIVERSIDE MUSIC Co.  
San Bernardino  
McDONALD & PRESTON

### San Diego

So. CALIF. MUSIC Co.  
720-22 Broadway  
FRANK'S MUSIC SHOP  
620 Fifth St.  
UNITED RADIO ELECTRIC  
2807 University Ave.  
THERALE MUSIC Co.

### Santa Ana

ROBERT S. GERWING  
312 N. Broadway

### Santa Barbara

J. E. WILEY  
9 W. Anapama St  
BOLTON & JONES  
819 State St.

### Temple

TEMPLE AUTO ELECTRIC  
Upland

ROY CREIGHTON  
305 Second Ave.

### Ventura

PRIOR RADIO SHOPPE  
1032 Main St.

### Venice

STEWART-WARNER RADIO  
STUDIO

### Whittier

H. C. OLDHAM

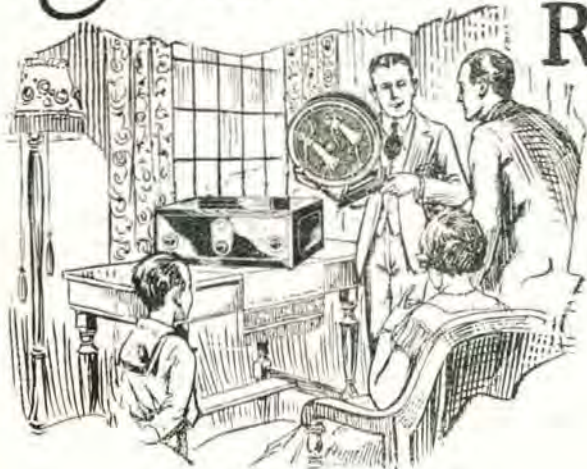
# K M T R

370 METERS

Every Monday Evening, 9:00 to 10:00



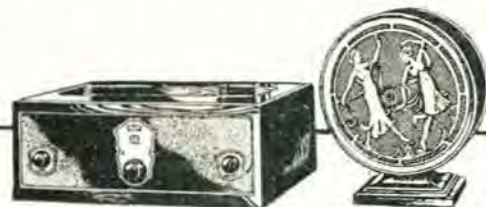
# A demonstration of Stewart-Warner Radio costs nothing!



Any of the authorized Stewart-Warner dealers listed in this advertisement will consider it a privilege to demonstrate Matched Unit Radio in your own home.

They know that such a demonstration will prove to you, convincingly, that the Stewart-Warner practice of matching each unit in its radio line for 100% performance with the others has resulted in a combination of radio equipment that is unexcelled for tone, selectivity and volume.

Before you buy any radio, regardless of price, you owe it to yourself to hear Stewart-Warner Matched Unit Radio. Hear it in your own home—under the reception conditions prevailing in your neighborhood. We urge you to do this because we know that Stewart-Warner radio will please you. **YOU'LL WANT IT.** See your Stewart-Warner dealer **NOW.**



Model 345 - 6 Tubes  
Single dial Control  
\$8250 Without Accessories ~

New Reproducer - Model 415  
\$3150

## Los Angeles Dealers

ATWATER RADIO & ELEC. CO.  
3298 Glendale Blvd.  
CHAPMAN HOUSE SALES CO.  
4374-76 S. Figueroa St.  
DEAN K. BARRIS  
3100 S. Vermont Ave.  
BENSON HARDWARE COMPANY  
416 South Broadway  
BIRONG & BUSHARD  
1717 W. Adams St.  
CLIFF'S RADIO SERVICE  
2835 Dayton Ave.  
DON FINKLE  
2297 West Jefferson  
A. W. COOPER  
1315 W. 39th St.  
FRANK W. HASBROUCK  
6211 S. Vermont  
HARRY SAVOY  
828 W. Jefferson St.  
HOLLAND ELECTRIC SHOP  
5922 Pasadena Ave.  
HIDLEY RADIO & BIKE SHOP  
817 South Main St.  
HINES RADIO  
7322 South Broadway  
INTERPHONE ELECTRIC CO.  
5510 Monte Vista St.  
LOVINGER'S MELROSE RADIO SHOP, 4436 Melrose Ave.  
MANCHESTER RADIO CO.  
1522 E. Manchester Ave.  
MOHAWK BAT. & RAD. CO.  
2115 Sunset Blvd.  
NILSSON & NELSON  
4320 Avalon Blvd.  
NORTON & NORTON  
2211 N. Broadway  
POTTER RADIO SALES CO.  
1817 W. 54th St.  
CHAS. A. ROBINSON  
4502 S. Normandie  
RADIO ELECTRIC SHOP  
752 S. Vermont Ave.

## SHORT & ERISMAN

8422 1/2 S. Vermont  
A. C. SINGER  
4127 Pasadena Ave.  
SOUTHWEST ELECTRIC & RADIO CO., 807 W. Florence Ave.  
THAYER ELECTRIC CO.  
3908 Whittier Blvd.  
VISSER RADIO AND ELEC. CO.  
4739 Whittier Blvd.  
WEST STATES ELECT. CO.  
4751 South Broadway

## Hollywood Dealers

BARROWS & CONKWRIGHT  
5445 Sunset Blvd.  
DORAN'S ELECTRIC SHOP  
7415 Sunset Blvd.  
DORAN'S ELECTRIC SHOP  
8958 Santa Monica Blvd.  
GLOW ELECTRIC CO.  
5910 Hollywood Blvd.  
H. D. HATFIELD & SON  
1747 N. Vermont Ave.  
MELROSE RADIO SHOP  
3099 Melrose Ave.

## Southern California Dealers

ALHAMBRA, LeRoy G. Franklin  
644 W. Main.  
ANAHEIM, Bennett's Radio Shop  
520 Center St.  
ARTESIA, Wm. B. Hayes  
325 N. Main St.  
BARSTOW, Barstow Radio Shop  
BELLFLOWER, Stewart-Warner Radio Shop  
Pacific and Mayne Sts.  
BREA, Bennett's Radio Shop  
120 R. Pomona Ave.  
CALEXICO, City Electric Co.  
313 Second St.

CHATSWORTH, C. H. Preston & Son  
413 Sixth St.  
CHINO, Woods Radio Company  
413 Sixth St.  
CHULA VISTA, Inskip & Proctor  
317 Third Ave.  
COLTON, H. C. Bliss  
688 S. Seventh St.  
COMPTON, Model Electric Co.  
138 E. Main St.  
CORONADO, Coronado Radio Shop  
1011 Orange Ave.  
COVINA, Harold R. Houser  
115 College St.  
CULVER CITY, Culver City Radio & Elec. Co.  
6715 Washington Blvd.  
EAGLE ROCK, Weaver & King  
2112 Eagle Rock Blvd.  
EL CENTRO, Bowles & Son  
Seventh and Main St.  
EL SEGUNDO, B. W. McAllister  
119 Grand Ave.  
EL MONTE, Weaver & King  
(El Monte Bldg. Co.)  
ENCINITAS, Lee & Rosen  
ESCONDIDO, Dietrich's Electric Shop  
112 S. Kalmia  
GARDENA, Don Spears  
725 W. 165th St.  
GLENDALE, Alexander Radio Shoppe  
Alexander Theatre Arcade  
2100 N. Brand Blvd.

GLENDALE, Willard Hellman  
(Broadway Elec.)  
202 E. Broadway  
GLENDORA, James M. Reed  
HERMOSA BEACH, Rose Radio Store  
246 Camino Real  
HUNTINGTON PARK, H. L. (Radio) King  
115 E. Irvington St.  
HYNES, Van & Jenkins  
INGLEWOOD, R. D. Aylesworth  
111 N. Market St.  
LA JOLLA, Redding & White  
7462 La Jolla Blvd.  
LA MESA, La Mesa Radio Studio  
LANCASTER, E. A. Kneip  
BISHOP, Griffith Bros.  
LONE PINE, Griffith Bros.  
LONG BEACH, Aiday & Crandall  
1118 American Ave.  
LONG BEACH, The Electric Radio Co.  
1719 E. Anaheim  
LONG BEACH, Harold A. Nickle  
130 Nieto St.  
LONG BEACH, W. L. Horrell  
710 Pine St.  
LYNWOOD, Lynwood Elec. Co.  
204 N. Long Beach Blvd.  
NEWHALL, C. E. Graham  
OCEAN PARK, Crescent Tire and Supply Co.  
Bay and Main Sts.

OCEANSIDE, Dudley L. Axe  
Second St.  
ORANGE, Ray Dee Larzes  
118 N. Glassell St.  
Ray D. Sebrer  
PACIFIC BEACH, James R. Ramsey  
PALMS, Brickell Radio Elec. Co.  
12204 Washington Blvd.  
PASADENA, Wyckoff & Verrinder  
1447 North Lake St.  
PASADENA, Premier Radio  
11 California St.  
PASADENA, Premier Radio Co.  
Athletic Club Bldg.  
PASADENA, DeWilde Radio Laboratory  
2048 East Colorado Ave.  
PASO ROBLES, R. C. Heaton  
PICO, Pico Radio Shop  
POMONA, George W. Hjatt  
185 E. Third St.  
REDONDO, L. & L. Sales Co.  
216 Diamond St.  
REDLANDS, J. L. Yount  
106 W. Citrus Ave.  
RIVERSIDE, Frank W. Chaney  
998 Market St.  
SAN BERNARDINO, Gurr, Smith & Gurr  
439 Fourth St.

SAN DIEGO  
"Radio Smith"  
1241 28th St.  
"Better Radio"  
2855 University Ave.  
Glen H. Dutton  
3855 Van Dyke  
Guy H. Parmenter  
3735 San Diego Ave.  
SAN FERNANDO, Willis Rowe  
SAN LUIS OBISPO, Cline Elec. Co.  
956 Monterey St.  
SAN PEDRO, San Pedro Furn. Co.  
223 W. Sixth St.  
SANTA ANA, Shafer's Music Store  
415 N. Main St.  
SANTA BARBARA, Val Folger  
782 State St.  
SANTA MARIA, Ford & Smart  
118 E. Main St.  
SANTA MONICA, J. S. Suits  
825 Wilshire  
SANTA PAULA, The Music Shop  
104 W. Main St.  
SATICOY, H. H. Wright  
Sixth and D St.  
TAFT, L. H. Bird  
610 Center St.  
TONOPAH, NEVADA  
Tonopah Electric Company  
UPLAND, Jay M. Ross  
VENICE, Stewart-Warner Radio Studio  
1029 Washington Blvd.  
WALNUT PARK, Terminal Electric  
1006 Seville St.  
WESTMINSTER, Martin Engel  
WHITTIER, H. C. Oldham  
129 S. Greenleaf  
WILMINGTON, G. F. Clausen  
716 W. Anaheim St.

Stewart-Warner Products Service Station  
{ Wholesale Distributors Stewart-Warner Radio }  
1366 South Figueroa Street - LOS ANGELES  
811 Front Street (near "F") - SAN DIEGO





LESLIE ADAMS  
Announcer

## Los Angeles, California—467 Meters

# KFI

4000 WATTS—640 KILOCYCLES

Radio Central Super-Station of Earle C. Anthony, Inc.  
1000 S. Hope. Phone WE. 0331. After P. M., WE. 0337  
Class "B" 5000-Watt W. E. Sta., Operating on 4000 Watts  
ROBERT HURD, Program Manager

### DAILY EXCEPT SUNDAY—

5:30 p. m.—Musical Program  
6:15 p. m.—Radiatorial.  
6:30 p. m.—Vest Pocket.

### MONDAY, WEDNESDAY AND FRIDAY—

KFI Woman's Interest Department—Under the Direction of Agnes White.

10:00 to 10:20 p. m.—Talk on Face and Scalp Hygiene, by Georgia O. George.  
10:20 to 10:40 a. m.—Furnishings for the home by Agnes White, director of the Dept.  
10:40 to 11:00 a. m.—Betty Crocker—Gold Medal Flour Home Service Talks.  
11:10 to 11:30 a. m.—Food talks by Agnes White.

### WEEK COMMENCING SUNDAY, FEBRUARY 13, 1927

#### SUNDAY, FEBRUARY 13—

10:00 a. m.—Los Angeles Church Federation morning services.  
2:45 p. m.—San Francisco Symphony Orchestra, Alfred Hertz, conductor, broadcast simultaneously by KFI, KPO and KGO, presented by the Standard Oil Company of California.  
6:00 p. m.—Program by Russian Academy of Musical Art  
6:58 p. m.—Father Ricard's sun spot weather forecast.  
7:00 p. m.—Aeolian organ recital, Alex Reilly at the console; Grace Riesland, soloist.  
8:00 p. m.—Packard classic hour—Margaret Vail, contralto; Frances Brockett Kellogg, concert pianist; Thomas Wallace, baritone; Mildred Henderson, accompanist.  
9:00 p. m.—Bob Bottger and his Venetian Dance Orchestra, with Lois Whiteman and Winnie Parker, harmony singers.  
10:00 p. m.—Packard Six Orchestra, Bill Hennessey, director; Dolly MacDonald, blues singer; Esther Walker, pianist.

#### MONDAY, FEBRUARY 14—

7:00 p. m.—Harmony Twins—Starke Sisters, Hale Hooper, tenor.  
8:00 p. m.—Song recital by Gilda Marchetti; Pietro Cimini, composer-pianist.  
9:00 p. m.—Louise Klos Trio in a classic program.  
10:00 p. m.—Program by Meiklejohn Bros.

#### TUESDAY, FEBRUARY 15—

7:00 p. m.—Jack Martin's Hawaiian Trio; Clark Sisters (Ruth and Lilah); Al Lyman and uke.  
8:00 p. m.—Song recital by Virginia Flohri and Robert Hurd, with Lilyan Ariel, accompanist. All Schubert program.  
9:00 p. m.—Gattone String Quartet. Gretchen Garrett, soprano.  
10:00 p. m.—Azure Music Club. Glenn Edmunds and his Collegians; Edna Cook.

#### WEDNESDAY, FEBRUARY 16—

7:00 p. m.—Ray Fisher's Original Victorians Dance Orchestra.  
7:30 p. m.—Nick Harris—Detective Stories.  
7:45 p. m.—William MacDougall, Scotch Comedian.  
8:00 p. m.—Calpet Orchestra, Pryor Moore, director; Alma Frances Gordon, Paul Roberts. Presented by the California Petroleum Corporation.  
9:00 p. m.—Song recital by Maud Darling Weaver, contralto, with Lilyan Ariel, piano; classic songs in Italian and English.  
10:00 p. m.—Sunset Instrumental Quartet—Dorothy Ruth Miller, concert pianist; LaMont Stetzer, bass baritone.

#### THURSDAY, FEBRUARY 17—

7:00 p. m.—Program by University of Southern California.  
8:00 p. m.—KFI Drama Hour—Grace Mead, soprano, and Virginia McCoy, contralto.  
9:00 p. m.—Margaret Craven, soprano; Orline Burrow, violinist; Creta Vir Den, concert pianist; Marco Lanere, tenor.  
10:00 p. m.—Johnston and Farrell's Music Box Hour, direction of Gene Johnston, with Jim, Jack and Gene Trio and soloists.

#### FRIDAY, FEBRUARY 18—

7:00 p. m.—Program by Paul Roberts and Leslie Adams.  
8:00 p. m.—Aeolian Organ Recital—Alex Reilly at the console.  
9:00 p. m.—Alma Frances Gordon, contralto; Lilyan Ariel, pianist; Bilezza Trio.  
10:00 p. m.—Packard Ballad Hour—Harry Rowe, baritone; Ruth and Dolores Palethorpe.

#### SATURDAY, FEBRUARY 19—

7:30 p. m.—Felipe Deleado, Edna Clark Muir, pianist; Media Hora Espanola.  
8:00 p. m.—Program by Virginia Flohri, soprano; Robert Hurd, tenor. Mission Bell Orchestra, Pryor Moore, director; Will Garroway, piano; Paul Kepner, flutist. Presented by the Los Angeles Soap Company. Broadcast simultaneously by KFI, Los Angeles, and KPO, San Francisco.  
9:00 p. m.—Program by Grace Eaton Dow and Emma Kimmel.  
10:00 p. m.—Packard Radio Club—Esther Walker, pianist; Red Wyatt and his Uke, and LeRoy Bessler and Flo Ellsworth.  
11:00 p. m.—KFI Midnight Frolic.



*for* **Kellogg, Gilfillan**  
and these great accessories  
**Sherman, Clay & Co!**



Advantageous  
territory  
still open  
to live  
dealers—  
**Investigate!**

*Coast Distributors—*

**Sherman, Clay & Co.**

*Victor Distributors*

Los Angeles: 10th and Santee Sts.

San Francisco: 536 Mission St.

Oakland: 5175 Telegraph Ave.

Portland, 487 Glison St.

Seattle: Republican St. and Terry Ave.

Spokane: 330 West Sprague Ave.

- Kellogg**  
receivers
- Gilfillan**  
receivers
- O'Neil**  
cone loudspeakers
- Rola**  
cone speakers
- Victor**  
loudspeakers
- Sherman**  
batteries
- Westinghouse**  
"Auto-Power"  
A-Battery  
eliminators
- Silver Beauty**  
chargers
- Pemco**  
power units
- R. C. A.**  
radiotrons
- Eveready**  
batteries
- Philco**  
batteries and  
socket powers

For information as to DEALER TERRITORY clip and mail this  
to nearest Sherman Clay & Co. wholesale branch. (R. D.)

Name \_\_\_\_\_

Address \_\_\_\_\_

Interested in \_\_\_\_\_



"Uncle John" Daggett  
Announcer

## Los Angeles, California—405.2 Meters

# KHJ

500 WATTS—740 KILOCYCLES

Times Bldg., First and Broadway, Los Angeles  
Owned and Operated by Los Angeles Times

JOHN S. DAGGETT, Manager and Program Announcer  
Phone MET. 0700

"Kindness, Happiness and Joy"

NIGHTLY EXCEPT SUNDAY AND MONDAY—

7:30 p. m.—Scripture Reading.

WEEK COMMENCING SUNDAY, FEBRUARY 13, 1927

### SUNDAY, FEBRUARY 13—

10:00 a. m.—Dr. Gordon Palmer, pastor of the South Park Baptist Church, will give the sermon from the studio of KHJ.

10:30 a. m.—Organ recital and morning service from the First Methodist Episcopal Church.

7:00 to 8:00 p. m.—Evening service from the First Methodist Episcopal Church.

8:00 to 10:00 p. m.—News items. Program presenting Frederick MacMurray, viola; Albert Lee, baritone; Louise Miller, studio pianist.

8:15 p. m.—Burr McIntosh, "The Cheerful Philosopher."

### MONDAY, FEBRUARY 14—

8:00 p. m.—Weather report.

### TUESDAY, FEBRUARY 15—

2:30 p. m.—Weekly bridge game.

6:30 to 7:30 p. m.—Children's hour, including the weekly visit of the Radio Fairies, Queen Titania and her Sandman; Charles D. Mcloy's Harmonica Band, and George Kerr.

7:40 p. m.—H. M. Robertson will talk on "Dogs."

8:00 to 10:00 p. m.—News items. De luxe program.

10:00 to 11:00 p. m.—Dance music by the Los Angeles Railway Orchestra.

### WEDNESDAY, FEBRUARY 16—

2:30 p. m.—Fred C. McNabb, Garden Talk.

6:30 to 7:30 p. m.—Children's program, presenting Viola Essen, 3-year-old reader, pupil of Marshall Stedman; Lois Jane Campbell, "Brown Eyes"; Patricia Eccleston, "Little Daffodil"; Vivian Marple, "Blue Bell of KHJ"; Glenn Fitz, "Optimistic Mascot," and Gabriel Bartold, cornet soloist.

7:40 p. m.—Dr. Mars Baumgardt will lecture on "Astronomy."

8:00 to 9:00 p. m.—News items. Program arranged by Tilda Rohr.

9:00 to 10:00 p. m.—Musical program.

10:00 to 11:00 p. m.—Dance music by the Jinniston Vale Orchestra.

### THURSDAY, FEBRUARY 17—

6:30 to 7:30 p. m.—Children's program, featuring Jeanne DeBard, "Bonnie Jeanne"; Joyce Coad, "Red Riding Hood"; Dickie Brandon, screen juvenile; June Brandon, contralto; Rosetta Lewin, "Curly Locks," and others.

7:40 p. m.—Dr. Phillip M. Lovell, "Care of the Body Talk."

8:00 to 10:00 p. m.—News items. Program including the Zoellner Quartet; Leo H. Samsiper, Russian baritone; Prof. Charles F. Lindsley, in readings, and Louise Miller, concert pianist.

10:00 to 11:00 p. m.—Dance music by Glenn Edmunds and his Varsity Four.

### FRIDAY, FEBRUARY 18—

6:30 to 7:30 p. m.—Children's hour, presenting Lambert E. Marks, flute soloist; Vera Travis, violinist; June Starr Catroll, screen juvenile; Marguerite Bringham, "Nightingale"; Roberta Bush, "Firefly"; Catherine Cotter, "Sweetheart of Radioland"; Margaret Bond, violinist; Billy Lord, "Police Comrade," and Bettinae Pfefferkorn, "Bobolink."

8:00 to 10:00 p. m.—News items. Program presenting Dot Street, soprano; Grace Currey, harpist; Louise Miller, pianist, and others.

9:00 p. m.—Talk under the auspices of the Council on International Relations.

### SATURDAY, FEBRUARY 19—

6:30 to 7:30 p. m.—Children's program, including Dolly Wright, "Dolly of Radioland"; Arthur Stevens, "King Arthur"; Helen Berta Haison, 7-year-old ukulele; Nona Clapp, "Sunshine Fairy"; Marjorie Genevieve Lowe, "June Bug"; Mercedes Marlowe, "Boy Girl," and Arthur L. Sisson, "Teedle-de-dee."

7:30 p. m.—Program by the Monrovia High School Girls' Orchestra.

8:00 to 10:00 p. m.—News items. Program including the Los Angeles Railway Hawaiian Quartet, Mr. and Mrs. Benjamin F. Sears, old-time fiddler and pianist, and others.

Program Published as Submitted by the Station.

# \$1

**RADIO BATTERIES' RECHARGED  
RENTAL BATTERIES FURNISHED**

# \$1

Called For and Delivered—Within 4-Mile Radius  
Small Added Charges over 4 Miles

**LUDLUM & STEELE, Willard Dealers**

965 Venice Blvd.

Call WEStmore 6974

Los Angeles



## The Catalina Island Swim

One of these sets accompanied Mrs. Margaret Hauser in her swim.  
Several of the swimmers had this set on their pilot boat.



## The Companionable Set

*Light weight—easily handled—can be taken any place.  
Perfect reproduction, selectivity, volume; beautifully designed.  
Will Fit in Any Setting.*

*The Lowest Priced Set of Its Kind on the Market.*

ON DISPLAY IN LOS ANGELES AT

The Ambassador Hotel      The Biltmore Hotel  
Subway Terminal Waiting Room (between 4th and 5th on Hill St.)  
13 Mercantile Arcade

Distributed by

Johnson Radio Co., 688 Geary Street, San Francisco  
The Radio Studios, 1207 Fourth Ave., Seattle

## KEMPER RADIO LABORATORY

1236 Santee St.      LOS ANGELES      WEStmore 2504  
Makers of Kemper Ampliphonic Consoles



E. J. ALBRIGHT,

Announcer

## Hollywood, California—337 Meters

# KNX

750 WATTS—890 KILOCYCLES  
LOS ANGELES EVENING EXPRESS  
Paul G. Hoffman's Studebaker Bldg., 6116 Hollywood  
Blvd., Hollywood. Phone HEMPstead 4101  
NAYLOR ROGERS, Manager and Program Director  
GLEN RICE, Asst. Manager  
"The Voice of Hollywood"

### DAILY EXCEPT SUNDAY—

- 8:00 a. m.—Inspirational talk and morning prayer.  
8:55 a. m.—Time signals from Washington, D. C., followed by  
Birthdays notices.  
9:00 a. m.—Radio Shopping News, conducted by Carey Preston  
Ritteneisetr.  
10:00 a. m.—Town Crier of the Day and his pals,  
Director Household Economics Dept., Evening Express.  
10:30 a. m.—Kate Brew Vaughn, Director Household Economics Dept.,  
except Friday and Saturday.  
12:00 noon—Magnavox Radio Orchestra, George Redman, director.  
12:30 p. m.—W. F. Alder Travelogue.  
1:30 p. m.—The Book Worm.  
2:00 p. m.—Radio Trades Association musical program.  
4:00 p. m.—Lost and Found Column.  
4:55 p. m.—Market reports.  
5:45 p. m.—The Town Tattler.  
6:00 p. m.—George Redman's Concert Orchestra playing from Leighton's Arcade Cafeteria  
8:30 p. m.—Dinner hour concert, presenting the Yale Radio Battery Orchestra.

### WEEK COMMENCING SUNDAY, FEBRUARY 13, 1927

#### SUNDAY, FEBRUARY 13—

- 10:00 a. m.—First Presbyterian Church of Hollywood, Rev. Stewart P. MacLennan.  
2:00 to 4:00 p. m.—City Park Board musical program.  
5:15 p. m.—Wilshire All-Souls Church.  
6:30 p. m.—Hollywood Unitarian Church.  
7:00 p. m.—First Presbyterian Church of Hollywood, Rev. Stewart P. MacLennan.  
8:00 p. m.—Circle Theater Concert Orchestra and organ recital.  
9:00 p. m.—Velvetone Corporation, courtesy program.

#### MONDAY, FEBRUARY 14—

- 3:00 p. m.—First Presbyterian Church of Hollywood.  
7:00 p. m.—Birkel Music Company, courtesy program.  
7:30 p. m.—Playlet, courtesy Overell Furniture Company.  
8:00 p. m.—L. W. Stockwell Company, courtesy program, with Calmon Luboviski, master  
violinist, and Claire Mellonino, concert pianist.  
9:00 p. m.—B. F. Goodrich Rubber Company of Akron, Ohio.  
10:00 p. m.—KNX Feature program.  
11:00 p. m.—Hotel Ambassador, Gus Arnheim's Coconut Grove Orchestra.

#### TUESDAY, FEBRUARY 15—

- 3:00 p. m.—Combined program of Police and Fire Department.  
4:00 p. m.—Radio Matinee, with Louise Howatt, contralto.  
7:00 p. m.—Wilshire loanco Company, courtesy program.  
8:00 p. m.—Feature program.  
9:00 p. m.—Western Auto Supply Company, courtesy program.  
10:00 p. m.—Hotel Ohmbassador, Gus Arnheim's Coconut Grove Orchestra.

#### WEDNESDAY, FEBRUARY 9—

- 7:00 p. m.—Birkel Music Company, courtesy program.  
7:30 p. m.—Feature program.  
8:00 p. m.—Stewart-Warner Radio Dealers, courtesy program.  
9:00 to 11:00 p. m.—Feature program.  
11:00 p. m.—Hotel Ambassador, Gus Arnheim's Coconut Grove Orchestra.

#### THURSDAY, FEBRUARY 17—

- 11:00 a. m.—Nature talk, courtesy Marvel Ant Gelatine Company.  
7:00 p. m.—Organ recital, courtesy of the Overell Furniture Company.  
8:00 p. m.—Bert Farrar, Inc., courtesy program.  
9:00 to 11:00 p. m.—Feature program.  
10:00 p. m.—Feature program.  
11:00 p. m.—Hotel Ambassador, Gus Arnheim's Coconut Grove Orchestra.

#### FRIDAY, FEBRUARY 18—

- 3:00 p. m.—Los Angeles District Federation of Women's Clubs musical program  
4:00 p. m.—Boy Scouts' musical program.  
7:00 to 9:00 p. m.—Feature program.  
9:00 p. m.—Davis Perfection Broad Company, courtesy program.  
10:00 p. m.—Feature program.  
11:00 p. m.—Hotel Ambassador, Gus Arnheim's Coconut Grove Orchestra.

#### SATURDAY, FEBRUARY 19—

- 3:00 p. m.—Town Crier of the Day and his Pals.  
7:00 p. m.—Stories of insect life by Harry W. McSpadden.  
7:30 to 9:00 p. m.—Feature program.  
10:00 p. m.—Hotel Ambassador, Gus Arnheim's Coconut Grove Orchestra.  
11:00 p. m.—KNX Frolic from the main studio.

Program Published as Submitted by the Station



# ATWATER KENT RADIO

*The Single Dial  
in a Single Second*

gives you more than a multiple-dial set can in several minutes, because half a turn of ONE DIAL covers the entire broadcast range.

Model 35  
Receiver  
with One Dial

**\$75**

(Less Accessories)

Radio  
Speaker  
Model H

**\$22**



**RAY THOMAS INC.**  
*Atwater Kent Distributor*

1248 S. Hope St. WE 6334

LOS ANGELES



Gerald L. King  
Manager

## Hollywood, California—252 Meters

# KFWB

500 WATTS—1190 KILOCYCLES  
WARNER BROS. MOTION PICTURE STUDIOS  
Warner Bros. West Coast Studio, 5842 Sunset Blvd.  
GERALD L. KING, Mgr. WM. RAY, Asst. Mgr.  
Phone GL. 9461  
"Movie Land"

### DAILY EXCEPT SUNDAY—

12:30 to 1:30 p. m.—Classified Hour.  
6:00 to 7:00 p. m.—Pontiac Six Dinner Hour  
MONDAY, TUESDAY AND WEDNESDAY—  
5:00 to 6:00 p. m.—Children's Hour  
10:00 to 11:00 p. m.—Musical program from Mayfair Hotel.  
11:00 to 12:00 p. m.—Dance music from El Patio Ballroom.

### WEEK COMMENCING SUNDAY, FEBRUARY 13, 1927

#### SUNDAY, FEBRUARY 13—

2:00 to 3:00 p. m.—Organ recital the world's mightiest organ located in Roosevelt Memorial Park.  
7:30 to 8:00 p. m.—Program by courtesy of The Southern California Music Company.  
8:00 to 10:30 p. m.—The Tipica Orchestra of Mexico City, under direction of Sr. Jose Briseno, by courtesy of The La Vina Investment Company, rebroadcast by Station KFWO, Catalina Island, California, and other stations.

#### MONDAY, FEBRUARY 14—

7:0 to 8:00 p. m.—Program by courtesy of The J. N. Pyles National Detective Service.  
8:00 to 9:00 p. m.—Charlie Cole, Ann Grey, Warner Bros. Dance Orchestra.  
9:00 to 10:00 p. m.—Frank Barry, tenor; Warner European Novelty Orchestra.

#### TUESDAY, FEBRUARY 15—

4:45 to 5:55 p. m.—Dr. L. T. Clark on "Diet."  
7:00 to 7:30 p. m.—Program by courtesy of The So. Calif. Music Co.  
7:30 to 8:00 p. m.—Warner Bros. Orchestra.  
8:00 to 9:00 p. m.—Kenneth Gillum, Jean Raymond, Warner Bros. Orchestra.  
9:00 to 10:00 p. m.—Jane Beats, Jack Goode, Warner Bros. String Trio.

#### WEDNESDAY, FEBRUARY 16—

5:40 to 6:00 p. m.—Georgia O. George on "Psychology of Beauty."  
7:00 to 7:30 p. m.—Thirty minutes of sunshine by Charles W. Hamp.  
8:00 to 9:00 p. m.—Byrle Colby, Julius Phillips, Warner Bros. Orchestra.  
9:00 to 10:00 p. m.—The Junior Symphony direction of Albert Keglovich.

#### THURSDAY, FEBRUARY 17—

7:00 to 7:30 p. m.—Program by courtesy of The So. Calif. Music Co.  
7:30 to 8:00 p. m.—Warner Bros. Orchestra.  
8:00 to 9:00 p. m.—Frances St. George, Warner Bros. Orchestra.  
9:00 to 10:00 p. m.—Ina Mitchell Butler, Elmer Bramel, Warner Bros. Concert Orchestra.

#### FRIDAY, FEBRUARY 18—

7:00 to 8:00 p. m.—Program by courtesy of The LaVina Investment Company.  
8:00 to 9:00 p. m.—LeRoy Kullberg, Virginia King, Warner Bros. Orchestra.  
9:00 to 10:00 p. m.—Melody Makers Hour.

#### SATURDAY, FEBRUARY 19—

7:00 to 8:00 p. m.—Carl Dye and his Melody Makers, and entertainers.  
8:00 to 9:00 p. m.—Program by courtesy of The Mona Motor Oil Company.  
9:00 to 10:00 p. m.—Jack Goode, Helen Waltenberg, Warner Bros. String Trio.

Program Published as Submitted by the Station

Authorized **Steward-Warner** Dealers  
Matched-Unit Radio

FIVE TUBE, MODEL 300, COMPLETE, \$99.00 — TERMS

Ceco Tubes  
Majestic B Units  
Philco A and B Units  
Acme Cone Speakers

National A Socket Power  
Trickle Chargers, \$8.60  
Console Cabinets  
Canon Ball Speakers

FULL LINE OF PARTS  
MAIL ORDERS PROMPTLY FILLED

**ATWATER RADIO & ELECTRIC COMPANY**

3208 Glendale Blvd.

Olympia 6417

Los Angeles, Calif.



The NEWEST  
LITTLE MARVEL in RADIO

—+—

Stromberg-Carlson  
Audio Filter!

*(A Product of the Stromberg-Carlson Telephone Mfg. Co.)*

—+—

What It Does—

Absolutely takes the rattle or harshness out of any type of speaker.

Smooths the tone and eliminates jarring background noises.

Adapts any cone speaker to sets using only 90 volts "B" battery and no power tube.

Enables the perfect reproduction of cone speakers to be heard as never before.

EVERY SET NEEDS ONE!

*Attached by Anyone in a Few Seconds*

Only \$3.65

AT ALL DEALERS

—+—

WESTERN · RADIO, Inc.

*Wholesalers of Fine Radio Merchandise Since 1919*

1224 Wall Street  
LOS ANGELES

STROMBERG-CARLSON  
CUNNINGHAM  
EVEREADY

Westmore  
3 3 3 8



G. ALLISON PHELPS  
Manager and Announcer

## Hollywood, California—370.2 Meters

500 WATTS

# KMTR

KMTR RADIO STATION  
1025 N. Highland Avenue. Telephone HOLLY 3026  
Owned and Operated by C. C. JULIAN  
FORBES W. VAN WHY, Technical Engineer  
Portable Broadcast Station 6XBA

### DAILY EXCEPT SUNDAY—

7:30 to 8:00 a. m.—J. C. Casey in Setting-up Exercises.  
12:00 to 12:30 p. m.—Leighton's Arcade Cafeteria Orchestra.  
1:30 to 2:30 p. m.—Radio Press Hour.  
2:30 to 4:00 p. m.—Palais de Dance.  
4:00 to 4:15 p. m.—Vacation Days.  
5:00 to 5:30 p. m.—Home Hour.  
5:30 to 6:00 p. m.—Leighton's Arcade Orchestra.

6:00 to 6:15 p. m.—Nightly Doings.  
6:15 to 7:00 p. m.—Duro System Dinner Hour Concert.  
7:00 to 7:30 p. m.—Musical Program.

### WEEK COMMENCING SUNDAY, FEBRUARY 13, 1927

#### SUNDAY, FEBRUARY 13—

5:30 to 6:15 p. m.—White King Male Quartet. Courtesy Los Angeles Soap Co.  
6:00 to 6:15 p. m.—Nightly Doings.  
6:30 to 7:00 p. m.—Leila Castberg's half hour. "Enlightened Selfishness."  
7:00 to 8:00 p. m.—Miller's Lafayette Cafe Concert Orchestra.  
8:00 to 9:30 p. m.—Concert period. Jack Cronshaw's Orchestra.

#### MONDAY, FEBRUARY 14—

7:30 to 8:00 p. m.—Lavine Investment Company courtesy program.  
8:00 to 9:00 p. m.—Eureka Vacuum Cleaner Company program.  
9:00 to 10:00 p. m.—Precision Electric Company courtesy program  
10:00 to 11:00 p. m.—Miller's Cafe Lafayette Orchestra.  
11:00 to 12:00 midnight—Dance Music from Palais de Dance.

#### TUESDAY, THURSDAY, SATURDAY—

9:30 to 10:00 p. m.—Sylvia, the Blind Cook.

#### TUESDAY, FEBRUARY 15—

10:00 to 10:15 a. m.—Fifteen Minutes of Sunshine by Charles Hamp  
11:00 to 12:00 a. m.—Mme. Alene's talk.  
7:30 to 8:00 p. m.—Campbell and Ginder courtesy program.  
8:00 to 9:00 p. m.—Maxwell House Coffee Orchestra and assisting artists.  
9:00 to 10:00 p. m.—Courtesy program.

#### WEDNESDAY, FEBRUARY 16—

7:30 to 8:00 p. m.—Sponsored program.  
8:00 to 9:00 p. m.—Safeway Stores courtesy program.  
9:00 to 10:00 p. m.—Sponsored program.

#### THURSDAY, FEBRUARY 17—

10:00 to 10:15 a. m.—Fifteen Minutes of Sunshine by Charles Hamp.  
10:15 to 10:45 a. m.—Dr. Paul J. Dorosh—The Diet Question Box.  
7:30 to 8:00 p. m.—Winslow B. Felix, Chevrolet courtesy program.  
8:00 to 10:00 p. m.—Ruth Roland night.

#### FRIDAY, FEBRUARY 18—

7:30 to 8:00 p. m.—Thirty Minutes of Sunshine, by Charles Hamp.  
8:00 to 9:00 p. m.—Alta Club Ginger Ale program.  
9:00 to 10:00 p. m.—Income Realty & Construction Company courtesy program.

#### SATURDAY, FEBRUARY 19—

10:00 to 10:15 a. m.—Charles Hamp, presenting Gaylord Wilshire's famous invention, "The Ionaco."  
1:00 to 1:15 p. m.—Gordon Whitnall, managing director City Planning Commission.  
7:30 to 7:40 p. m.—Sheriff's Office, Bureau of Public Relations.  
7:40 to 8:00 p. m.—KMTR Movie Club program.  
8:00 to 10:00 p. m.—Movieland Night.

Program Published as Submitted by the Station.

## SHEPHERD RADIO SERVICE

Authorized Dealer for

**Stromberg-Carlson, Federal Ortho-Sonic Receiving Sets**

We specialize in correcting balky receivers. Super-Heterodynes, Infradynes, Roberts, etc., made to perform efficiently

Transformers Matched, Coils Balanced

Phone Us Your Troubles. Our Service Will Please

Batteries Changed, Tubes Reactivated. Work Called for and Delivered

**GRanite 7482**

7562 Sunset Boulevard

Hollywood, California



## Selling Like Hot Cakes

# The Powell 'B' Eliminator

Uncondition-  
ally  
Guaranteed



**\$12<sup>25</sup>**

**Absolutely No Hum**

Operates any set from light socket without the use of expensive and troublesome "B" batteries. A large surplus of power at 100 volts and at a cost of only a few cents a year.

**MORE VOLUME - - MORE DISTANCE**  
**GREATER SATISFACTION**  
**BETTER QUALITY - - BETTER PRICE**

**No Tubes, No Acid and Nothing Else to Buy**

*A ten-day trial with absolute satisfaction or money back*

### GUARANTEE

This instrument is the result of months of experimenting and exhaustive tests. The best of materials and workmanship have been combined to insure its satisfaction with the user and it is guaranteed unconditionally for one year. If for any reason it fails to perform satisfactorily it should be returned to the seller who is instructed to repair or replace, free of charge.

Call or Telephone VERmont 1619 for Information

**Powell Manufacturing Co.**

4009 S. Western Ave.

Los Angeles, Calif.



M. E. CARRIER  
Announcer

## Los Angeles, California—294 Meters

# KTBI

750 WATTS—1020 KILOCYCLES  
BIBLE INSTITUTE OF LOS ANGELES  
MR. M. E. CARRIER, Manager  
PROF. H. G. TOVEY, Director of Programs  
Phone ME. 6701

### DAILY EXCEPT SUNDAY—

5:30 to 9:00 a. m.—Devotional Hour.  
2:00 to 3:00 p. m.—Inspirational Hour.

### DAILY EXCEPT FRIDAY AND SUNDAY—

7:15 to 8:00 p. m.—Aunt Martha's Children's Hour

WEEK COMMENCING SUNDAY, FEBRUARY 13, 1927

#### SUNDAY, FEBRUARY 13—

10:30 a. m. to 12:30 p. m.—Regular service of the Church of the Open Door.  
6:00 to 7:00 p. m.—Radio Vesper Service. Sermon by T. J. Voris.  
7:15 to 9:30 p. m.—Regular evening service of the Church of the Open Door. Sermon by Dr. C. Campbell Morgan.

#### MONDAY, FEBRUARY 14—

8:00 to 9:00 p. m.—J. Stuart Holden.

#### TUESDAY, FEBRUARY 15—

8:00 to 9:00 p. m.—J. Stuart Holden.

#### WEDNESDAY, FEBRUARY 16—

8:00 to 9:00 p. m.—J. Stuart Holden.

#### THURSDAY, FEBRUARY 17—

8:00 to 9:00 p. m.—J. Stuart Holden.

#### FRIDAY, FEBRUARY 18—

6:15 to 7:00 p. m.—Aunt Martha's Children's Program.  
7:00 to 8:00 p. m.—Exposition of International Sunday School lesson.  
8:00 to 9:00 p. m.—J. Stuart Holden.

*Program Published as Submitted by the Station.*

## Los Angeles, California—275.1 Meters

# KFSG

500 WATTS—1090 KILOCYCLES  
ANGELUS TEMPLE, ECHO PARK. Phone DR. 2560  
AIMEE SEMPLER McPHERSON, Founder, President  
ESSIE BINKLEY, Program Manager  
ESTHER FRICKE GREENE, Organist  
GLADWYN N. NICHOLS, Musical Director & Announcer  
"Four Square Gospel"

### DAILY EXCEPT SUNDAY AND MONDAY—

10:30 to 11:30 a. m.—Sunshine Hour.  
11:30 a. m. to 12:30 p. m.—Noonday Musical.  
6:30 to 7:30 p. m.—Angelus Hour.

### DAILY EXCEPT SUNDAY, WEDNESDAY AND SATURDAY—

2:30 to 3:30 p. m.—Gray Studio Program.

WEEK COMMENCING SUNDAY, FEBRUARY 13, 1927

#### SUNDAY, FEBRUARY 13—

10:30 to 12:30 p. m.—Sunday morning worship, Evangelist A. G. Garr.  
2:30 to 4:30 p. m.—Afternoon Dispensational service by A. G. Garr.  
6:30 to 8:00 p. m.—Musical Hour. Angelus Temple Band and Choir.  
8:00 to 9:00 p. m.—Revival service by A. G. Garr.  
10:00 to 11:00 p. m.—Organ recital by Esther Fricke Greene.

#### TUESDAY, FEBRUARY 15—

3:30 to 4:30 p. m.—Vesper Hour. Organ recital by B. Earnest Ballard  
7:30 to 9:30 p. m.—Evangelistic service by student evangelists.

#### WEDNESDAY, FEBRUARY 16—

2:30 to 5:30 p. m.—Divine Healing Service by A. G. Garr.  
7:30 to 9:30 p. m.—Regular mid-week prayer service by A. G. Garr.

#### THURSDAY, FEBRUARY 17—

3:30 to 4:30 p. m.—Vesper Hour. Organ recital by B. Earnest Ballard.  
7:30 to 9:30 p. m.—Regular Water Baptismal service. A. G. Garr.  
9:15 to 10:00 p. m.—Gray Studio Program.  
10:00 to 11:00 p. m.—Organ recital by Esther Fricke Greene.

#### FRIDAY, FEBRUARY 18—

3:30 to 4:30 p. m.—Vesper Hour. Organ recital by Esther Fricke Greene.  
7:30 to 9:30 p. m.—Crusader Rally. Sermon by A. G. Garr.  
10:00 to 11:00 p. m.—Back Home Hour.

#### SATURDAY, FEBRUARY 19—

3:30 to 4:30 p. m.—The Children's Happy Hour.  
7:30 to 9:30 p. m.—Divine Healing Service, conducted by A. G. Garr.



# Mohawk Radio

## One Dial

### THE PIONEER ONE-DIAL SET

Any of the following dealers will be glad to demonstrate a set for you. Once demonstrated, you will buy.

#### LOS ANGELES

R. C. Larkin  
4285 Beverly Blvd.  
Mohawk Battery & Radio  
2115 Sunset Blvd.  
L. A. Duncan  
2891 West Pico  
Bob Brown  
4353 South Figueroa St.  
Monarch Radio Company  
2189 W. Washington Blvd.  
L & Y Electric Co.  
8864 West Pico  
Normandie Radio  
5069 Hollywood Blvd.  
Barney Campbell  
8210 Sunset Blvd.  
Top Notch Radio  
747 S. Main St.  
ANAHEIM, Schmidt Music Co.  
217 West Center  
GLENDALE—Alexander Radio  
Shop, 216 North Brand  
WHITTIER, H. D. Squires  
218 South Greenleaf  
LONG BEACH, R. W. Haynes  
137 East Fourth  
CARLSBAD, Standard Garage  
WILMINGTON—Kelm Radio  
SANTA PAULA—Kit Carson  
ONTARIO—Davis Electric Co.

#### SAN DIEGO

Nelson Radio  
Fains Radio Shop

FILLMORE, M. D. Basolo  
SOLANO BEACH, I. E. Connor  
CALEXICO, City Electric Co.  
313 Second St.  
INDEPENDENCE, Sterling Bros.  
Garage  
BISHOP, Exide Battery Shop  
SAN CLEMENTE, San Clemente  
Electric Shop  
LONE PINE, James G. Ducker  
MONROVIA, J. H. Terry  
416 South Myrtle  
SANTA BARBARA, Channel Elec-  
tric Co., 523 Anacapa St.  
SANTA PAULA, Kit Carson  
SANTA MONICA Bay Dist. Dealer,  
Warren Radio Shop, 1548 17th St.  
SEAL BEACH, D. W. Collier  
321 Main St.  
LOMITA, Calkins Hdwe. Co.  
TORRANCE, De Bra Radio Co.  
BELLFLOWER, S. E. Moore  
617 Somerset St.  
SAN PEDRO, Journey Electric Co.  
380 Sixth St.

#### PASADENA

Lee Radio  
922 E. Colorado  
Wilson Music Co.  
180 E. Colorado  
Radio Doc  
1581 Walnut St.

## COOK-NICHOLS CO.

411 S. San Pedro St.  
Los Angeles, Cal.

482 S. Fair Oaks Ave.  
Pasadena, Cal.



Dave Ward

## Hollywood, California—226 Meters

# KFQZ

1641 North Argyle Ave., Hollywood, California  
 Gladstone 3197; Gladstone 3198  
 DAVE WARD, Program Director and Announcer  
 L. E. TAFT, Technical Engineer  
 "The Palace Bungalow Studio"

### DAILY EXCEPT SUNDAY—

12:00 to 1:00 p. m.—Los Angeles Merchants' and Manufacturers' Hour.

6:00 to 7:00 p. m.—Decker, Diamond and Decker, Hawaiian Trio  
 7:00 to 8:00 p. m.—Musical Hour.

### WEEK COMMENCING SUNDAY, FEBRUARY 13, 1927

#### SUNDAY, FEBRUARY 13—

8:00 p. m.—Aram Galanian's Orchestra and Al Flanigan, soloist.

9:00 p. m.—Dave Ward and his Yellow Jackets.

#### MONDAY, FEBRUARY 14—

8:00 p. m.—Semi-classical hour, conducted by Myra Belle Vickers.

9:00 p. m.—Dave Ward and his Yellow Jackets; Los Angeles Railway Quartet.

#### TUESDAY, FEBRUARY 15—

7:30 p. m.—Wilshire Ionaco Lecture.

8:00 p. m.—Rebroadcast of Eastern stations.

9:00 p. m.—Police and Firt joint program.

#### WEDNESDAY, FEBRUARY 16—

8:00 p. m.—Redel's Orchestra.

9:00 p. m.—Kitty and the boys and C. Howard Paxton, soloist.

10:00 p. m.—Dave Ward and his Yellow Jackets and Virginia King.

#### THURSDAY, FEBRUARY 17—

8:00 p. m.—Paramount Dance Orchestra and Ned Miller, soloist.

9:00 p. m.—Dave Ward and his Yellow Jackets.

#### FRIDAY, FEBRUARY 18—

7:30 p. m.—Wilshire Ionaco Lecture.

8:00 p. m.—Alexander Drankoff program.

9:00 p. m.—Dave Ward and his Yellow Jackets, Pat Lee and Helen McColl.

#### SATURDAY, FEBRUARY 19—

8:00 p. m.—Silver String Glendalians and Rutht Donigan, soloist.

Smith, Art Goodstein and Virginia King.

## SPECIAL

B  
A  
T  
A  
N  
  
M  
A  
H  
O  
G  
A  
N  
Y



MODEL 81  
**\$19.50**  
 41 in. High  
 12 to 18 x 7 in.  
 Panel

GOODWORK RADIO CABINET SHOP  
 8715 Avalon Blvd. Los Angeles, Calif.  
 Open Evenings and Sundays

S  
P  
A  
C  
E  
  
F  
O  
R  
  
C  
O  
N  
E  
  
S  
P  
E  
A  
K  
E  
R

## McKinley "B" Power Unit



A Perfect "B" Eliminator Giving a  
 Maximum and Constant  
 Power Supply

Absolutely no hum on local or distant  
 reception.

Designed for the D-X fan  
 100-Volt Units.....\$20.00  
 100-Volt Heavy Duty.....25.00  
 150-Volt.....35.00

Satisfactory Service Has Made Our  
 Business Grow

Phone York 1828 for Demonstration

**McKinley Radio Mfg. Co.**

10905 S. Main St. Los Angeles  
 Excellent Dealer Proposition



*Splendid  
Service*



*Competent  
Salesmen*

# RADIOLA

## 20

WITH

## The Ovenshire Symphony Speaker

A PERFECT COMBINATION

Radiola 20 with tubes, batteries and the Ovenshire Symphony  
Speaker

### SPECIAL

### \$129

Phone TRinity 0746 for a Demonstration

## Eastman Kodak Stores, Inc.

510 South Broadway  
LOS ANGELES



GEORGE FRENKER  
Announcer

## Pasadena, California—315.6 Meters

# KPSN

PASADENA STAR-NEWS  
1000 WATTS—950 KILOCYCLES  
GEORGE CECIL COWING, Managing Director  
GEORGE FRENKER, Program Manager  
HERSHEL SATTERFIELD, Engineer-in-Charge  
F. ERIC C. PRYOR, Studio Office  
Phone, Wakefield 3111

DAILY EXCEPT SUNDAY—

12:00 to 12:15 p. m.—News Bulletin.

6:00 to 7:00 p. m.—Dinner-time news report.

WEEK COMMENCING SUNDAY, FEBRUARY 13, 1927

SUNDAY, FEBRUARY 13—

10:30 a. m.—Family Altar Service by the United Church Brotherhoods.

11:00 a. m.—Services from the Pasadena Presbyterian Church.

6:00 to 7:00 p. m.—Star-News concert, with Adolf Tandler and the Ensemble.

MONDAY, FEBRUARY 14—

8:00 to 9:15 p. m.—Star-News concert, with Adolf Tandler and the Ensemble.

TUESDAY, FEBRUARY 15—

8:00 to 9:15 p. m.—Star-News concert, with Adolf Tandler and the Ensemble.

THURSDAY, FEBRUARY 17—

8:00 to 9:15 p. m.—Star-News concert, with Adolf Tandler and the Ensemble.

FRIDAY, FEBRUARY 18—

8:00 to 9:15 p. m.—Star-News concert, with Adolf Tandler and the Ensemble.

SATURDAY, FEBRUARY 19—

8:00 to 9:15 p. m.—Star-News concert, with Adolf Tandler and the Ensemble.

*Program Published as Submitted by the Station.*

"RENDLER FOR RADIO"

## \$1 Down—

Will Place a  
MAJESTIC "B"  
Current Supply in  
Your Home

## then \$1 a week

Large 45 Volt "B" Batteries \$1.85

\$4.75 Heavy Duty "B" Bats. . 2.95

Age "Guaranteed" "A" Tubes,

New Base . . . . . .69

\$4.00 Brandes Audio

Transformers . . . . . 2.95

## \$5 Down—

Will Place a  
PHILCO "A and B"  
Supply in Your  
Home

## then \$6 a month

\$15.00 Baldwin Speakers . . . \$7.50

6 Volt, 100 Amp. Stor. Bats. . 7.75

\$10.00 Trickle Chargers . . . 8.15

\$1.65 H. & H. Vernier Dials .79

\$10.00 Higrade Cabinets . . . 3.95

Serenada Loud Speakers . . . 3.70

Browning Drake Coils . . . . . 1.95

ESTAB. 1904

625 So. Main  
Opposite  
P. E. Depot

# J. C. RENDLER

TRinity 4281  
Los Angeles

OPEN EVENINGS

"THE RADIO CENTER"

MAIL ORDERS



# You Can Have Up to 160 Volts "B" Power With This Unit

*No Tubes to  
Replace*

*Will Operate Sets  
Using Power  
Tubes*

*Plug Can Be Left  
Permanently in  
Socket*



*Full Regulation  
for Amplifier  
Voltages*

*Full Regulation  
For Detector  
Voltages*

*There Are Only  
Four Connections  
to Make*

WILLARD "B" POWER UNIT

Your house lighting current is transformed into your "B" power with this Willard Unit. Not only does it supply ample power for the set but it does it free from hum or distortion.

Pleasing in appearance and with all connections plainly marked, this unit will appeal to those who want quality reception combined with ease of operation.

## **The WILLARD' BATTERY MEN** *of Southern California*

90 Service Stations in Los Angeles—and one or more in other towns and cities. There is one near you.



**TOM MITCHELL**  
Announcer

## Santa Monica, California — 238 Meters

# KNRC

1000 WATTS CAPACITY  
Owned and Operated by KEIRULFF & RAVENS-  
CROFT COMPANY.  
Municipal Auditorium, Ocean Park, Santa Monica,  
Calif. Phone Santa Monica 63-101.  
TOM MITCHELL, Studio Manager and Announcer.  
C. B. JUNEAU, Transmission Engineer.  
*"The Station with a Smile"*

### DAILY EXCEPT SUNDAY—

6:00 p. m.—Merchants Review.  
6:30 to 7:30 p. m.—Club Casa Del Mar organ recital. Remote control.  
7:30 p. m.—Merchants Review.  
10:00 to 11:00 p. m.—Club Casa Del Mar Orchestra. Remote control

### DAILY EXCEPT MONDAY—

8:00 to 9:00 p. m.—Band Concert.  
1:30 p. m.—Band Concert.

WEEK COMMENCING MONDAY, FEBRUARY 14, 1927

#### MONDAY, FEBRUARY 14—

4:15 p. m.—Brother Tom and Smiling Circle.  
8:00 to 10:00 p. m.—Lee Young Jr. and his Gables Club Orchestra, Smiling Harvey Porter, Dorothy and Dawn Smith.

#### TUESDAY, FEBRUARY 15—

4:15 p. m.—Brother Tom and his Smiling Circle.  
9:00 p. m.—Sherman Hunter, tenor; Georgia Williams Trio.

#### WEDNESDAY, FEBRUARY 16—

4:15 p. m.—Smiling Circle with Brother Tom.  
9:00 p. m.—Pirate Band, Albert Broad, tenor.

#### THURSDAY, FEBRUARY 17—

4:00 p. m.—Brother Tom and his Smiling Circle.  
9:00 p. m.—Red Wyatt, Golda Anderson Trio, Margaret Bechtel, Erma Reed.  
10:00 p. m.—Club Casa del Mar Orchestra, by remote control through KNRC.

#### FRIDAY, FEBRUARY 18—

4:00 p. m.—Brother Tom and his Smiling Circle.  
9:00 p. m.—Los Angeles Railway String Quartet and Band.

#### SATURDAY, FEBRUARY 19—

4:15 p. m.—Brother Tom and his Smiling Circle.  
9:00 p. m.—K and R Program.  
11:00 p. m.—Gables Club Orchestra by remote control.

#### SUNDAY, FEBRUARY 20—

10:45 p. m.—Pilgrim Lutheran Church services by remote control through KNRC.  
5:15 p. m.—The Pirate Band.  
8:15 p. m.—Pilgrim Lutheran Church service.  
7:00 p. m.—Club Casa del Mar Organ Recital.  
6:00 p. m.—Municipal Band Concert.  
9:00 p. m.—Club Casa del Mar Recital.

*Program Published as Submitted by the Station.*

SEE PAGE 5 FOR PRIZE OFFER

## "SUPER-HET" OWNERS!

Do You Know That

### TRANSTROM INTERMEDIATE TRANSFORMERS

Installed in your set will increase its selectivity, sensitivity and distance 100 per cent?

PORTABLE CABINETS MADE TO ORDER

CALIBRATING, REPAIRING AND ACCESSORIES FOR ALL SETS

## SIERRA RADIO LABORATORIES

318 W. Fifth St.

Los Angeles, Calif.

Vandike 6464



# 5 Tube Falck



## *Beautiful Mahogany Console*

Plug in your light socket as you would your electric iron. No batteries, no acid, no muss, no fuss. Operates without aerial. One dial control. Something everybody wants, at a low cost. Cash credit for your old set.

**Phone VE. 9589**

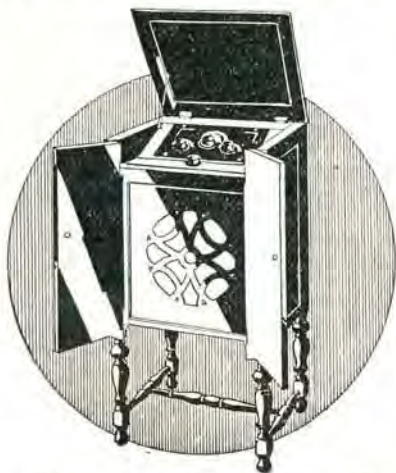
**For Home  
Demonstration**

**EASY TIME PAYMENTS**

**FLETCHER  
RADIO MUSIC CO.**

4705 S. Vermont Ave. VE. 9589  
Los Angeles

# *First See This* **NO-BATTERY RADIO**



Before you decide on your new Radio, see and hear this new 5-tube Falck. In appearance you will find it unequalled in sets selling at much higher prices. In performance it will amaze you. Equipped with the famous 48-inch Golden Bear Tone Chamber, the tone of the Falck is pleasing to the most critical ear. And no batteries or chargers of any kind!

**\$150 Complete—No Extras**

*See this supreme Radio value at any authorized Falck dealer, or phone MUTual 1724 for demonstration in your own home.*

FALCK RADIO SALES CO.  
1262 W. Second St.

# *The Falck*



Leo T. Cleary  
Announcer

## Venice, California—205 Meters

# KFVD

500 WATTS  
McWHINNIE ELECTRIC CO., Venice Ballroom,  
Venice Calif. Phone 65959 or 65950  
Station Manager, W. H. WHITE.

WEEK COMMENCING SUNDAY, FEBRUARY 13, 1927

SUNDAY, FEBRUARY 13—

10:00 to 12:00 midnight—Venice Ballroom Orchestra.

MONDAY, FEBRUARY 14—

8:30 to 9:00 p. m.—Harry Dinowitz, violinist; George Thiroux, ukulele artist.

9:00 to 10:00 p. m.—Melba Lyon, KFDV girl, and others.

10:00 to 12:00 p. m.—The Venice Ballroom Orchestra, followed by The Ship Cafe Frolic.  
8:00 to 10:00 p. m.—Studio Program, featuring Dale Fulton, violinist; Lila Fulton, piano; Gee Thiroux, popular songster; Roy Davis, whistler; Fred Wesley, tenor, and others.

TUESDAY, FEBRUARY 15—

8:00 to 10:00 p. m.—Studio Program; Harry Dinowitz, violinist; Virginia Reese, Pianist; the Zerich Family Orchestra; Mr. Henning Banjo Orchestra.

WEDNESDAY, FEBRUARY 16—

8:00 to 10:00 p. m.—Jack Pope's Californians; Gee Thiroux, tenor; Elizabeth Swan, piano; Eddie Mills, 14 strings of Harmony; Bob Davis, baritone.

THURSDAY, FEBRUARY 17—

8:00 to 10:00 p. m.—Miss Usher, astrologer; The Ancient Trio, their combined ages, 243 years; Geraldine Gordon, female baritone; Art Forbes and his Black Cat Syncopaters.

FRIDAY, FEBRUARY 18—

8:00 to 10:00 p. m.—Claude Bond, piano and accordion; Morris Lenksy, Russian baritone; Dr. Delivante, pianist; Louis Lucich, Slavonian tenor; Bessie Fletcher, soprano, and the Californian Colonials Band.

SATURDAY, FEBRUARY 19—

8:00 to 10:00 p. m.—Eddie Mills' 14 Strings of Harmony; St. Elmo Russell, piano accordion. Program by the Bureau of Public Safety of the Los Angeles Police Department.

1:00 to 2:00 a. m.—Harry Judson Entertainers' Hour.

*Program Published as Submitted by the Station.*

SEE PAGE 5 FOR PRIZE OFFER



Major Lawrence Mott  
Announcer

## Avalon, California—211.1 Meters

# KFWO

THE ISLAND STATION  
Power 250 Watts—Western Electric Equipment  
"Katalina for Wonderful Outings"  
MAJOR LAWRENCE MOTT, Owner-Operator  
MISS FRANCES HEWITT, Studio & Program Dir.  
"The Isle With a Smile"

WINTER SCHEDULES AT KFWO

The Mott Station at Catalina Island, California  
(In Effect Week of Sept. 20th)

DAILY EXCEPT MONDAY—

12:30 to 1:30—Hotel St. Catherine Orchestra.

6:30 to 8:00—St. Catherine Orchestra.

DAILY EXCEPT MONDAY, THURSDAY AND SUNDAY—

6:00 to 6:30—Studio.

MONDAYS: Silent.

TUESDAYS: 5:00 to 6:00—Miss Hewitt's Golden Hour.  
6:00 to 8:00—Studio.

WEDNESDAYS: 8:00 to 9:00—Studio Program.  
9:00 to 12:00 Midnight—Overseas.

THURSDAYS: 8:00 to 9:00—Studio Program.

FRIDAYS: 5:00 to 6:00—Miss Hewitt's Golden Hour.  
6:00 to 6:30—Wrigley Chimes.

SATURDAYS: 3:00 to 4:30—Rebroadcast of KNX.  
9:15 to 10:00—Studio.

SUNDAYS: 5:00 to 6:00—Miss Hewitt's Golden Hour.  
6:00 to 6:30—Wrigley Chimes.  
8:00 to 9:15—Lobby Concert.

*Victor Electrola used during all programs.*

*Program Published as Submitted by the Station.*



# 290 Stations!

*Japan - Australia - New Zealand*

By Using a

Use this Radio Power Box one week on your Radiola Semi-portable 24, 26 and 28, and other types of super-heterodynes, then if you are not satisfied, return box and the purchase price will be refunded.



This model built for Radiola and other types of Super-Heterodynes.

Now \$6.00

MODEL NO. 24

## RADIO POWER BOX

Results Guaranteed

*Paso Robles, Calif., Jan. 30th, 1927.*

SAN TEE CO.

Dear Sirs:

About three weeks ago I sent for one of your No. 24 Power Boxes, with which I am more than satisfied.

Last night I brought in JOAK, Japan, and 5CL and 2BL, Australia, on LOUD SPEAKER. I also have other Japanese and Australian stations other than these, and, too, I have had New Zealand. In Canada, Mexico and the United States I have had 290 stations. One 15-watt in San Antonio, Texas, 10-watt in Seattle and 5-watt in Stockton. I am using a No. 28 Radiola with loop aerial and your booster No. 24 with about 140 feet of No. 14 stranded wire running south for aerial. My ground is six feet of two-inch pipe driven in ground and heavy insulated wire soldered to it, and leads to booster which sits over No. 1 tube, first detector.

Sincerely,

ELLIOTT KIRKPATRICK.

406 Sixteenth Street.

Immediate Attention Given Mail Orders

**THE SANTEE CO.**

216 Calo Building  
443 S. San Pedro St.

Telephone TUCKER 4951  
Los Angeles, Calif.



"HAL" G. NICHOLS  
Announcer

## Long Beach, California—233 Meters

# KFON

1280 KILOCYCLES—750 WATTS

NICHOLS & WARRINER, INC.

Studio 211 Jergins Trust Bldg. Phones 617-19, 614-60

Business Office, 212 Jergins Trust Bldg.

Phones: 617-19, 614-60

HAL G. NICHOLS, Manager and Studio Director

"Where Your Ship Comes In"

### DAILY EXCEPT SUNDAY—

- 10:15 to 10:30 a. m.—"Devotion Period."  
11:30 a. m. to 12:30 p. m.—Friszma Hour.  
4:00 to 4:30 p. m.—Press-Telegram Late News.  
5:00 to 6:00 p. m.—KFON Concert Orchestra.  
6:00 to 6:50 p. m.—Organ Recital from State Theater.  
6:50 to 7:00 p. m.—Pacific Land Co.'s Travelogue.  
8:00 to 10:00 p. m.—"The Hour De Luxe."

### DAILY EXCEPT SUNDAY AND MONDAY—

- 2:30 to 4:00 p. m.—Municipal Band Concert.

### WEEK COMMENCING SUNDAY, FEBRUARY 13, 1927

#### SUNDAY, FEBRUARY 13—

- 4:00 to 5:00 p. m.—Vesper hour.  
5:00 to 6:55 p. m.—KFON Concert Orchestra.  
7:00 to 7:45 p. m.—Patty's Cafe Orchestra.  
7:45 to 9:00 p. m.—Services from First Church of Christ, Scientist.  
9:00 to 12:00 p. m.—"Everybody's Night"—amateurs and professionals.

#### MONDAY, FEBRUARY 14—

- 7:00 to 8:00 p. m.—Thrifty Sandy program, sponsored by Citizens State Bank.  
8:15 to 9:00 p. m.—"Weekly Song Cycle."  
9:00 to 12:00 p. m.—"Kiwaniis Frolic."

#### TUESDAY, FEBRUARY 15—

- 7:00 to 7:30 p. m.—Bluebird Hawaiian Trio.  
7:30 to 8:00 p. m.—"Chat for Booklovers," presented by Hewitt's Book Store.  
8:00 to 9:00 p. m.—Press-Telegram presenting Long Beach Municipal Band.  
9:00 to 10:00 p. m.—"The Hour De Luxe."  
10:00 to 11:00 p. m.—Majestic Ballroom Orchestra, by remote control.  
11:00 to 12:00 p. m.—Capitol Theatre Organ Recital, by remote control.

#### WEDNESDAY, FEBRUARY 16—

- 7:00 to 9:00 p. m.—Pacific Coast Club Orchestra, by remote control.  
9:00 to 10:00 p. m.—Truck Tire Service program.  
10:00 to 11:00 p. m.—Pacific Coast Club Orchestra, by remote control.  
11:00 to 12:00 p. m.—Capitol Theatre Organ Recital, by remote control.

#### THURSDAY, FEBRUARY 17—

- 8:00 to 9:00 p. m.—Press-Telegram presenting Long Beach Municipal Band.  
9:00 to 10:00 p. m.—Shell Oil Company's Orchestra.  
10:00 to 11:00 p. m.—Majestic Ballroom Orchestra, by remote control.  
11:00 to 12:00 p. m.—Capitol Theatre Organ Recital, by remote control.

#### FRIDAY, FEBRUARY 18—

- 7:00 to 7:30 p. m.—Church of Christ, by Rev. Ernest Beam.  
8:00 to 9:00 p. m.—Press-Telegram presenting the Long Beach Municipal Band.  
9:00 to 10:00 p. m.—Gaskill Manufacturing Co. and Missman Radio Company program.  
10:00 to 12:00 p. m.—Elks' Frolic—Lodge No. 888.

#### SATURDAY, FEBRUARY 19—

- 7:00 to 8:00 p. m.—Pacific Coast Club Orchestra, by remote control.  
8:00 to 9:00 p. m.—Press-Telegram presenting Long Beach Municipal Band.  
9:00 to 11:00 p. m.—Pacific Coast Club Orchestra, by remote control.  
11:00 to 12:00 p. m.—Capitol Theatre Organ Recital, by remote control.

Program Published as Submitted by the Station.



## THE COMPLETE BOOTER AERIAL

Ready to install—6 Booters, 50 feet special aerial wire. Insulators, lead-in wire. It increases Volume with short aerial Selectivity.

Sent Postpaid \$2.50

(A Set of Six Booters Alone, \$1.00)

### The F. E. Wolters Corp.

Radio Division

324 N. San Pedro St.

Los Angeles, Calif.





For Sets, Accessories and  
**SERVICE**



on

# RCA-Radiola

MADE BY THE MAKERS OF RADIOTRONS

Go to One of These Authorized RCA Dealers:

## LOS ANGELES

### Beverly Hills

CRAWFORD'S RADIO-MUSIC  
445 Beverly Drive  
OXford 6801

### Hollywood

CRAIG RADIO SERVICE  
7022 Melrose Ave.  
WHitney 7312

HOLLYWOOD MUSIC Co.  
6019 Hollywood Blvd.  
HOLlywood 0364

### Lincoln Heights

FRANK GRAVES SASH, DOOR  
& MILL Co., HDW. DEPT.  
2012 Pasadena Ave.  
CApitol 2071

### Southwest

BOULEVARD FURNITURE Co.  
1574 W. Washington, at  
Vermont  
BEacon 0722

C & G ELECTRIC & RADIO  
Co.

1501 W. Santa Barbara,  
at Dalton  
VERmont 5205

L. A. DUNCAN  
2891 W. Pico St.  
EMpire 1141

FLETCHER RADIO MUSIC Co.  
4705 S. Vermont Ave.  
VERmont 9589

### Highland Park

HOLLAND ELECTRIC SHOP  
5632 Pasadena Ave.  
GARfield 3912

### South

C. W. HICKS RADIO  
5007 S. Broadway  
AXridge 3157

### Southeast

CENTRAL ELECTRIC Co.  
3802 Central Ave.  
HUmolt 2337

### Wilshire

WOLFE RADIO Co.  
543 S. Western  
WAShington 5711

### Downtown

THE ELECTRICAL APPLI-  
ANCE SHOP  
336 S. Broadway  
TUcker 2932

HARRY W. HARRISON  
848 S. Flower St.  
TRinity 9777

MARTIN MUSIC Co.  
734 S. Hill St.  
TRinity 9621

PAN AMERICAN UNION  
TRADING Co.  
(Union Ins. Bldg.)  
978 W. Sixth St.  
MUTual 3803

### ALHAMBRA

FRED B. GILLENWATER  
RADIO STUDIO  
127 W. Main St.  
ALhambra 2032

### BELL

BAKER AVE. ELECTRIC Co.  
910 Baker Ave.  
DElaware 1871

### EAGLE ROCK

EAGLE ROCK MUSIC Co.  
2144 Colorado Blvd.  
ALbany 4315

### GLENDALE

GLENDALE MUSIC Co.  
(Salmacia Bros.)  
118 S. Brand Bldy.  
Glendale 90

J. A. NEWTON ELECTRIC  
Co.

154 S. Brand Bldy.  
Glendale 240

"Buy With  
Confidence



Where You See  
This Sign"



TOM SEXTON  
Announcer

## San Diego, California—245.8 Meters

# KFSD

1000 WATTS—1220 KILOCYCLES  
AIRFAN RADIO CORPORATION  
U. S. Grant Hotel, 326 Broadway, San Diego. Main 8801  
RAYMUND V. MORRIS, President  
TOM SEXTON, Announcer

"Kiss From San Diego"

DAILY EXCEPT SUNDAY—

6:00 to 7:00 p. m.—Nightly musical review.

10:00 to 11:00 p. m.—Harvey Ball and his U. S. Grant Hotel Orches

WEEK COMMENCING SUNDAY, FEBRUARY 13, 1927

SUNDAY, FEBRUARY 13—

3:00 to 4:00 p. m.—Temple service of the Theosophical University

MONDAY, FEBRUARY 14—

7:00 to 8:00 p. m.—Studio hour.

8:00 to 9:00 p. m.—First Unitarian Church program, Howard B. Bard.

9:00 to 10:00 p. m.—Mixed musical program.

TUESDAY, FEBRUARY 15—

7:00 to 8:00 p. m.—Studio hour.

8:00 to 9:00 p. m.—Union Title Company "Classic Hour" program.

9:00 to 10:00 p. m.—Mixed musical program.

WEDNESDAY, FEBRUARY 16—

7:00 to 7:30 p. m.—Courtesy program by Wilshire's Ionaco Company.

7:30 to 8:30 p. m.—Concert program furnished by the Theosophical University

8:30 to 9:30 p. m.—C. C. C. Tatum, realtor, Bay Hills Orchestra.

9:30 to 10:00 p. m.—"Popular" Orthophonic program.

THURSDAY, FEBRUARY 17—

7:00 to 8:00 p. m.—Police program, dance music and concert music.

8:00 to 9:00 p. m.—John P. Mills, Inc., Point Loma Orchestra.

FRIDAY, FEBRUARY 18—

7:00 to 8:00 p. m.—Studio hour.

8:00 to 9:00 p. m.—P. M. Dairy Concert Orchestra. Instrumental Trio.

9:00 to 10:00 p. m.—Mixed musical program.

SATURDAY, FEBRUARY 19—

7:00 to 8:00 p. m.—San Diego Senior High School program.

8:00 to 9:00 p. m.—Mme. de Beauvriere, "Franco-American" hour.

9:00 to 10:00 p. m.—"Classic" hour Orthophonic recital.

Program Published as Submitted by the Station.

## MODERNIZE YOUR OLD PHONOGRAPH



### THE ELEC-TRU-TONE THE PHONOGRAPH MODERNIZER

Will give you marvelous electric reproduction on your old machine.  
TONE so life-like it will thrill you.  
BASS full and resonant.  
PLENTY VOLUME under perfect control.

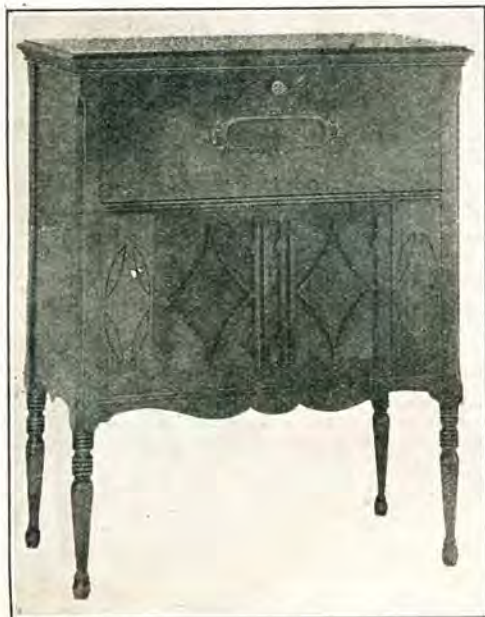
Everybody: Phone MAin 3843 for name of nearest dealer.  
Elec-tru-tone Dealers: Our list is incomplete. Phone in your names.

The Elec-tru-tone Corp., Hibernian Bldg., Los Angeles

Distributed Nationally by

Baker-Smith Co., Inc., Call Bldg., San Francisco





**Dealers!  
Manufacturers!  
Set Owners!**

Why not buy the

**BEST**

in Radio Furniture?

Our prices are moderate. Our designs are up to date. First class workmanship in all A & A Furniture.

Our new Finishing Department insures perfect finish on all cabinets.

## A & A FURNITURE MFG. CO.

1117 East 63rd St.

Los Angeles, Calif.

Phone AXridge 7596

Cabinets      Consoles  
Battery Tables  
Radio Stools  
Infradyne Cabinets

For your convenience  
we now have a  
**Downtown Sales Dept.**  
at  
**United Radio  
Stores**

709 S. Main St. TU. 9733  
Wholesale and Retail





CURTIS PECK  
Announcer

## San Francisco, California—428.3 Meters

# KPO

1000 WATTS—700 KILOCYCLES  
HALE BROTHERS AND THE CHRONICLE  
ALBERT J. HODGES, Technical Director  
Phone Kearney 5777

"The Voice of San Francisco"

### DAILY EXCEPT SUNDAY—

- 6:45, 7:15 and 7:45 a.m.—Daily health drill by Hugh Barrett Dobbs
- 10:10 a.m.—Household Hints.
- 10:30 a.m.—"Ye Towne Crier."
- 12:00 noon—Time signals and Scripture reading.
- 12:30 to 1:00 p.m.—Clift Hotel Concert Trio.
- 1:00 to 2:00 p.m.—Rudy Seiger's Fairmont Hotel Orchestra.
- 3:30 to 5:30 p.m.—Palace Hotel Concert Orchestra.
- 5:30 to 6:15 p.m.—Children's Hour.
- 6:15 to 6:30 p.m.—"Ye Towne Crier."
- 6:30 to 7:00 p.m.—States Restaurant Orchestra.
- 7:00 to 7:30 p.m.—Rudy Seiger's Fairmont Hotel Orchestra
- 7:30 to 8:00 p.m.—DX.

### SUNDAY, FEBRUARY 13—

- 9:45 to 10:45 a.m.—Udenominational and non-sectarian church service.
- 10:45a.m.—U. S. weather forecast and general information.
- 2:40 to 4:15 p.m.—Concert of the San Francisco Symphony Orchestra. Alfred Hertz, director, to be broadcast from the New Curran Theater by KPO and KFI.
- 6:00 to 6:30 p.m.—States Restaurant Orchestra, Waldemar Lind, director.
- 6:30 p.m.—"Ye Towne Crier," giving general information.
- 8:35 to 8:35 p.m.—Palace Hotel Concert Orchestra.
- 8:35 to 10:00 p.m.—Rudy Seiger's Fairmont Hotel Concert Orchestra.
- 10:00 to 12:00 p.m.—John Wolohan and his Californians.

### MONDAY, FEBRUARY 14—

- 8:25 to 9:00 p.m.—Bridge lesson No. 16.
- 9:00 to 10:00 p.m.—Studio program.
- 10:00 to 11:00 p.m.—Billy Long's Cabirians.
- 11:00 to 12:00 p.m.—KPO's Variety Hour.

### TUESDAY, FEBRUARY 15—

- 8:00 to 9:00 p.m.—"Uda Waldrop Hour," featuring Uda Waldrop, KPO's official organist.
- 9:00 to 10:00 p.m.—Studio program.
- 10:00 to 11:00 p.m.—Palace Hotel Rose Room Dance Orchestra.
- 11:00 to 12:00 p.m.—John Wolohan and His Californians.

### WEDNESDAY, FEBRUARY 16—

- 8:00 to 9:00 p.m.—Program by the Atwater Kent Artists.
- 9:00 to 10:00 p.m.—Studio program.
- 11:00 to 12:00 p.m.—Billy Long's Cabirians.
- 10:00 to 11:00 p.m.—States Restaurant Orchestra.

### THURSDAY, FEBRUARY 17—

- 8:00 to 9:00 p.m.—Conservatory of Music, College of the Pacific.
- 9:00 to 10:00 p.m.—Studio program.
- 10:00 to 11:00 p.m.—Palace Hotel Rose Room Dance Orchestra.
- 11:00 to 12:00 p.m.—John Wolohan and His Californians.

### FRIDAY, FEBRUARY 18—

- 8:00 to 10:00 p.m.—Walter Krausgrill's Balconades Ballroom Orchestra.
- 10:00 to 11:00 p.m.—States Restaurant Orchestra, Waldemar Lind, director.
- 11:00 to 12:00 p.m.—John Wolohan and His Californians.

### SATURDAY, FEBRUARY 19—

- 8:00 to 9:00 p.m.—Simultaneous broadcast by KPO and KFI of a program presented by the San Francisco branch of the manufacturers of White King and Mission Bell Soap.
- 9:00 to 10:00 p.m.—Palace Hotel Rose Room Dance Orchestra.
- 10:00 to 11:00 p.m.—Walter Krausgrill's Balconades Ballroom Orchestra.

Program Published as Submitted by the Station.

# FOR RENT

Will rent half of Electrical Store to first class Radio Man. Good location in best residential section. Exceptional display and lighting arrangements.

Only want man who will handle first class merchandise.

Phone DUNKirk 5558

Los Angeles, Calif.



NOW THE **SUPREME R-F 5** IS SOLD  
FACTORY DIRECT TO YOU  
5-Tube Console Complete



**\$59**

Built-in speaker, large tubes, 100 A. H. Rubber Case Battery even the inside aerial is included—nothing else to buy.

**Selectivity :: Quality :: Distance**

New Modified S. L. F. condensers allow ample separation of low wave lengths and gives absolute selectivity on all stations. Using Kellogg's laboratory grade transformers assures you of tone perfection, and for distance the utmost in sensitivity has been achieved through proper design of condensers and inductance.

**Made of Finest Parts Obtainable**

The Supreme—Made of the finest of material such as Kellogg, Yaxley, Carter, C. R. L., Benjamin, Bakelite coils.

**Order Your Set Today**

and you'll say, like everyone else that hears the Supreme, "That's the best receiver I ever heard—it's wonderful." It's simply not equalled for purity of tone or fidelity of reproduction. Remember every part is guaranteed to you—you take no chances.

**THE PATTERSON FACTORY TO YOU SALES PLAN**

puts a guaranteed \$155 console, 5-tube receiver in your home for cash at about \$35 less than the actual wholesale price. Volume production is the answer.

**Patterson Radio Manufacturing Co.**

Established 1921

239 S. Los Angeles St.—VA. 8139

Los Angeles, Calif.



Edward J. Ludes  
Announcer

## San Francisco, Calif.—399.8 Meters

# KYA

1000 WATTS—750 KILOCYCLES

Headquarters at the Cleft Hotel

CLAIR MORRISON, Mgr. EDWARD LUDES, Announcer

DAILY EXCEPT SUNDAY—

12:30 to 2:00 p. m.—Cleft Hotel Concert Trio.

6:30 to 7:30 p. m.—Cleft Hotel Concert Trio.

10:00 to 11:00 p. m.—Cleft Hotel Dance Orchestra.

MONDAY, WEDNESDAY, FRIDAY—

8:00 to 10:00 p. m.—Studio program

SUNDAY, FEBRUARY 13—

11:00 a. m.—Services of Central Methodist Episcopal Church.

7:30 p. m.—Services of the Central Methodist Episcopal Church

MONDAY, FEBRUARY 14—

8:00 to 10:00 p. m.—Popular Night in the Studio.

WEDNESDAY, FEBRUARY 16—

8:00 to 9:00 p. m.—Studio program.

9:00 to 10:00 p. m.—The Emydian Choir, under the direction of Grant Austin.

FRIDAY, FEBRUARY 18—

8:00 to 10:00 p. m.—Studio program by the California Grays.

SATURDAY, FEBRUARY 19—

11:00 to 12:00 p. m.—Cleft Hotel Dance Orchestra.

*Program Published as Submitted by the Station.*

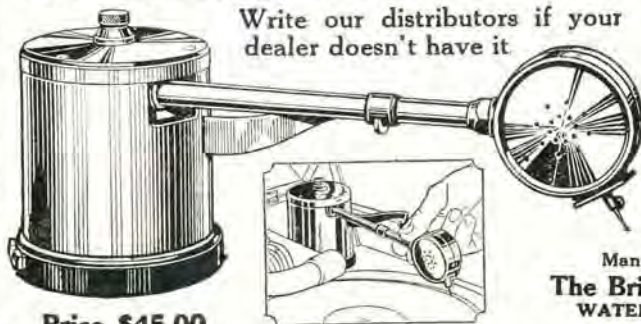
SEE PAGE 5 FOR PRIZE OFFER

# Bristophon

## ELECTRIC POWER AMPLIFIER

Electrifies the ordinary phonograph and gives it the tone range, sweetness and volume of the new "phonic" instruments. Operates in three ways: (1) with radio Power Speaker, (2) with radio Power Amplifier, (3) with radio Speaker only.

Write our distributors if your dealer doesn't have it.



Price \$45.00

### Pacific Coast Distributors:

**SAN FRANCISCO:**  
Pacific States Elec. Co.  
575 Mission St.  
Leo. J. Meyberg Co.  
873 Mission St.

**LOS ANGELES:**  
Pacific States Elec. Co.  
236 S. Los Angeles St.  
Leo. J. Meyberg Co.  
1022 S. Wall St.

**SPOKANE:**  
Pacific States Elec. Co.  
122 S. Lincoln St.

**OAKLAND:**  
Leo. J. Meyberg Co.  
921 Hawson St.

**SEATTLE:**  
Pacific States Elec. Co.  
670 First Ave., So.

**PORTLAND:**  
Pacific States Elec. Co.

Manufactured by  
**The Bristol Company**  
WATERBURY, CONN.

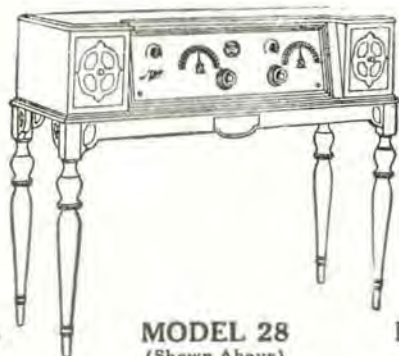


# Your Zenith Dealer

*Will Show You the*

## SUPER ZENITH ELECTRIC

A COMPARISON—SIDE BY SIDE WITH ANY OTHER  
SET—WILL CONVINCE YOU



**MODEL 27**  
**\$295.00**

Without Accessories

**MODEL 28**  
(Shown Above)  
**\$315.00**

Without Accessories

**MODEL 29**  
**\$415.00**

Two Speakers  
Less Tubes

Super-Zenith Electric Receivers have no batteries of any kind.  
No Acids—nothing to bother with

**DE LUXE ZENITH (10 Tubes)**

**\$685.00 to \$2550.00**

For the discriminating who want the best in tone, simplicity of  
tuning, and distance—all that can be had on any set.

**SEE YOUR DEALER**

DISTRIBUTORS:

# CHANSLOR and LYON CO.

1423 S. Grand Ave.  
LOS ANGELES

Polk at Ellis  
SAN FRANCISCO



Howard I. Milholland  
Announcer

## Oakland, California—361.2 Meters

# KGO

4000 WATTS—830 KILOCYCLES  
PACIFIC COAST STATION, GENERAL ELECTRIC CO  
Phone Fruitvale 5980

### DAILY EXCEPT SUNDAY—

- 11:30 a. m. to 1:00 p. m.—Hotel Leamington concert.  
1:30 and 6:00 p. m.—Stock and weather reports Baseball scores  
6:00 to 6:55 p. m.—Bem's Little Symphony Orchestra  
6:55 to 7:30 p. m.—Weather and stock reports.

### SUNDAY, FEBRUARY 13—

- 11:00 a. m.—Calvary Presbyterian Church service.  
2:40 p. m.—San Francisco Symphony Orchestra concert.  
4:00 p. m.—Vesper service, Grace Cathedral.  
6:30 to 7:30 p. m.—Concert by Bem's Little Symphony Orchestra.  
7:30 p. m.—Weather Bureau report.  
7:35 p. m.—First Congregational Church service, San Francisco.  
9:00 to 10:00 p. m.—Concert by Bem's Little Symphony Orchestra.

### MONDAY, FEBRUARY 14—

- 4:00 to 5:00 p. m.—California Federation of Women's Clubs.  
5:30 to 6:00 p. m.—KGO Kiddies' Klub.

### TUESDAY, FEBRUARY 15—

- 5:00 p. m.—Lectures by Dr. Virgil E. Dickson.  
8:00 to 9:00 p. m.—The Pilgrims, Eveready program by National Carbon Company.  
9:00 p. m.—Joseph Henry Jackson, "Chats About New Books."  
9:20 p. m.—Surprise broadcast.

### WEDNESDAY, FEBRUARY 16—

- 5:30 p. m.—"For Instance," by General Jackson.  
8:00 p. m.—Oakland Real Estate Board banquet.

### THURSDAY, FEBRUARY 17—

- 5:00 to 6:00 p. m.—George W. Ludlow, "Friend to Boys"  
8:00 to 9:15 p. m.—Program by Arion Trio;

### FRIDAY, FEBRUARY 18—

- 8:00 p. m.—Studio program.

### SATURDAY, FEBRUARY 19—

- 8:00 p. m.—"Weekly Sport Review," by Al Santoro.  
8:15 to 9:15 p. m.—Program from Hotel Leamington, Oakland.  
9:15 p. m. to 1:00 a. m.—Dance music, Wilt Gunzendorfer's Hotel Whitcomb Band.  
*Program Published as Submitted by the Station.*

## Oakland, California—303 Meters

# KTAB

THE ASSOCIATED BROADCASTERS  
ADA MORGAN O'BRIEN, Director

### DAILY EXCEPT SUNDAY—

- 8:45 to 9:15 a. m.—Prayer Service.  
9:15 to 9:45 a. m.—Shopping and women's hour.  
5:00 to 6:00 p. m.—Children's hour.  
6:30 to 7:00 p. m.—Twilight hour.  
7:00 to 7:30 p. m.—Shopping hour.



R. M. Bitzer  
Announcer

### SUNDAY, FEBRUARY 13—

- 9:45 to 10:45 a. m.—Prof. E. C. Linsley's Bible Class.  
11:00 a. m. and 7:45 p. m.—Service of Tenth Avenue Baptist Church.

### MONDAY, FEBRUARY 14—

- 8:00 to 10:00 p. m.—Valentine Program by Signor Antonio de Grassi, violin!

### TUESDAY, FEBRUARY 15—

- 8:00 to 8:15 p. m.—"Fifteen Minutes with Stamp Collectors," by Norman Shepard.  
8:15 to 9:30 p. m.—KTAB Quartet.  
9:30 to 10:00 p. m.—Community Chest program.

### WEDNESDAY, FEBRUARY 16—

- 8:00 to 10:00 p. m.—Part 1—Cel. Rosenblatt, pianist; Gene Redewill, violin; Theodore Kress, tenor. Part 2—Oden and Richard's Hawaiian Troupe, Jack Burt, baritone!

### FRIDAY, FEBRUARY 18—

- 8:00 to 8:45 p. m.—The Instrumental Hearts and Home Trio; Miss Grace Waldman, director; Mr. William Moir, tenor; Miss Irene Millier, pianist.  
8:45 p. m.—Community Chest Address, Community Chest Song, Emil E. Lichtig, baritone.  
9:00 to 10:00 p. m.—Coat Island Goats.  
*Program Published as Submitted by the Station.*



# Hexadyne 6-Tube

## PORTABLE



*New Improvements with Beauty, Simplicity*

**SINGLE DIAL CONTROL  
OPERATES WITH A LOOP**

The Hexadyne stands today not only as the leader in the portable field but the recognized standard of advanced radio engineering. No other portable radio on the market compares with the Hexadyne for beauty of tone and simplicity of operation.

**List Price \$125.00 Complete with All Accessories**

*Dealers Write at Once for Attractive Proposition*

---

**W. D. HUNT CO., Inc.**

4961 Sunset Blvd.

OLympia 3104

Los Angeles, Calif.



STEPHEN I. GAYLORD  
Announcer

## Portland, Oregon—491.5 Meters

# KGW

1000 WATTS—610 KILOCYCLES  
THE MORNING OREGONIAN  
"Keep Growing Wiser"

### DAILY EXCEPT SUNDAY—

- 7:15 a. m.—Setting up exercise.  
9:45 to 10:00 a. m.—Women's health exercises.  
10:00 to 11:30 a. m.—Town Crier, weather reports, news items.  
12:30 to 1:30 p. m.—Noon concert.  
6:00 to 7:00 p. m.—Dinner Concert.  
7:30 to 7:45 p. m.—Weather and market reports

### WEEK COMMENCING SUNDAY, FEBRUARY 13, 1927

#### SUNDAY, FEBRUARY 13—

- 10:55 to 12:30 p. m.—Morning services from the Church of Our Father.  
4:00 to 6:00 p. m.—KGW Salon Orchestra.  
6:00 to 7:30 p. m.—Concert Orchestra, directed by Geo. Rogovoy, from KOMO, through KGW and KHQ.  
7:30 to 9:00 p. m.—Evening services from the Hinson Memorial Baptist Church.  
9:00 to 10:00 p. m.—Concert by the Chevrolet Little Symphony Orchestra.

#### MONDAY, FEBRUARY 14—

- 7:00 to 7:30 p. m.—Children's program.  
8:00 to 10:00 p. m.—Vaudeville entertainment.  
10:00 to 12:00 p. m.—Dance music by Cole McElroy's Orchestra.

#### TUESDAY, FEBRUARY 15—

- 2:00 to 3:00 p. m.—Women's Matinee.  
7:00 to 7:30 p. m.—Children's program, broadcast simultaneously with KFOA and KHQ.  
8:00 to 10:00 p. m.—Educational program.  
10:00 to 12:00 p. m.—Dance music, featuring Herman Kenin and his orchestra.

#### WEDNESDAY, FEBRUARY 16—

- 7:00 to 7:15 p. m.—Utility service.  
7:30 to 8:00 p. m.—Albers Poultry School.  
8:00 to 9:00 p. m.—Concert by the Seventh U. S. Infantry Band.  
9:00 to 10:00 p. m.—Concert, presented by Maxwell House Coffee Company, broadcast simultaneously with KFOA and KHQ.

#### THURSDAY, FEBRUARY 17—

- 7:45 to 8:00 p. m.—Lecture, given under the auspices of the Catholic Truth Society of Oregon.  
8:00 to 10:00 p. m.—Vaudeville entertainment.

#### FRIDAY, FEBRUARY 18—

- 2:00 to 3:00 p. m.—Women's Matinee.  
7:00 to 7:30 p. m.—Children's program.  
7:30 to 8:00 p. m.—Weekly meeting of the KGW Movie Club.  
8:00 to 9:00 p. m.—Concert Orchestra, courtesy Los Angeles Soap Company.  
9:00 to 10:30 p. m.—Dance music by Cole McElroy's Orchestra.  
10:30 to 12:00 p. m.—Weekly frolic of the Keep Growing Wiser Order of Hoot Owls, broadcast with KMO, KFOA, KHQ, from KGW.

#### SATURDAY, FEBRUARY 19—

- 7:00 to 7:30 p. m.—Children's program, broadcasting from KFOA, through KGW and KHQ.  
8:00 to 8:30 p. m.—Concert by Pacific University Glee Club.  
9:00 to 10:00 p. m.—Concert, Calumet Instrumental Quartet.  
10:00 to 12:00 p. m.—Dance music.

Program Published as Submitted by the Station.

## PALMER RADIO LABORATORY

Established 1923

Specializing in

**SUPER-HETERODYNES AND INFRADYNES**

Intermediate Transformers Made and Calibrated

Also all other types of receivers made to operate efficiently

\* Satisfaction Guaranteed or No Charge

Advice Free

Open Evenings Till 9 P. M.

Courtesy to All

4529 S. Vermont, Los Angeles. Phone VERmont 7883



## YOUR NEIGHBORHOOD DEALER

BOSCH AND BREMER TULLY

FEDERAL AND RADIOLA

All Models  
**COUNTERPHASE**  
 and  
**BOSCH**

**H. A. Everest**  
 1032 North Ogden Drive  
 Nightly Demonstrations  
 GRanite 9915



and **FEDERAL**  
**Ortho-Sonic**

Two Ways of Saying  
 "Radio At Its Best"

**HETZEL RADIO**  
**SERVICE**

"Hetzal Radios Excel"  
 8303 Santa Monica Blvd.  
 Phone GRanite 5874

## CROSLEY SPECIALISTS

PERFECT TONE, SELECTIVITY, STABILITY and DISTANCE

Are the results of our exact balancing. Have your Crosley improved at nominal cost. Satisfaction guaranteed. Open evenings.

### CHILDS LABORATORY

1187 W. 24th St.

BEacon 7445

Los Angeles, Calif.

## FERBEND "B" BATTERY ELIMINATORS

DELIVERED HERE

180-Volt  
 Type  
**\$21.00**

Voltage Is Varied  
 By Clorastat



90-Volt  
 Type  
**\$14.75**

Supplies Any Set  
 Requiring 90 Volts  
 "B" Batteries

UNCONDITIONALLY GUARANTEED  
 Equal or Superior to Any, Regardless of Price  
**NATIONAL ELECTRIC COMPANY**

Distributors

416 West Ninth Street

TUcker 9776

If Your Dealer Cannot Supply You Mail Direct to Us

Los Angeles



FREEMAN H. TALBOT  
Announcer

## Denver, Colorado—322.4 Meters

# KOA

930 KILOCYCLES—5000 WATTS  
GENERAL ELECTRIC COMPANY  
Pacific Standard Time

"Rocky Mountain Broadcasting Station"

DAILY EXCEPT SATURDAY AND SUNDAY—

10:45 a. m.—Weather, Stock and Produce Reports

11:15 a. m.—Organ Recital.

5:00 p. m.—Stock and Market Reports

7:00 p. m.—Musical Program

DAILY EXCEPT SUNDAY—

11:15 a. m.—Organ recital.

WEEK COMMENCING SUNDAY, FEBRUARY 13, 1927

SUNDAY, FEBRUARY 13—

9:50 a. m.—Service of First Church of Christ, Scientist.

5:30 p. m.—Organ recital from First Church of Christ, Scientist.

6:50 p. m.—Service of First Church of Christ, Scientist.

MONDAY, FEBRUARY 14—

5:30 p. m.—Dinner concert, Brown Palace Orchestra.

6:30 p. m.—Children's hour, Denver Public Schools.

7:15 p. m.—Studio program, presented by the Denver Automobile show.

TUESDAY, FEBRUARY 15—

2:15 p. m.—Talk, "The Problem Child," given by Florence K. Barney.

2:30 p. m.—Matinee for housewives.

6:30 p. m.—Farm question box, George C. Wheeler, editor Western Farm Life.

8:00 p. m.—Radio instruction in auction bridge, conducted by studio players.

WEDNESDAY, FEBRUARY 16—

5:30 p. m.—Dinner concert, Brown Palace Orchestra, Howard Tillotson, director.

6:30 p. m.—Wynken, Blynken and Nod time.

7:15 p. m.—Studio program, presented by the Denver and Rio Grande Western Railroad Shopmen's Association Band.

THURSDAY, FEBRUARY 17—

2:15 p. m.—Talk, "The Problem Child," given by Florence K. Barney.

2:30 p. m.—Matinee for housewives. Silent night

FRIDAY, FEBRUARY 18—

2:30 p. m.—Matinee for housewives.

3:45 p. m.—Fashion review, given by the Gano-Downs Company, Denver.

5:30 p. m.—Dinner concert, Brown Palace Orchestra, Howard Tillotson, director.

6:00 p. m.—"Aggie Kickoffs," Extension service, Colorado Agricultural College, Denver.

6:30 p. m.—Preview of International Sunday School lesson.

7:15 p. m.—Studio program, presented by Rocky Mountain News and Denver Evening News.

SATURDAY, FEBRUARY 19—

9:30 p. m.—Dance program, Scheuerman's Colorado Orchestra, from Colorado Club, Denver.

Program Published as Submitted by the Station.

## Alternating Current Transformers

Filament  
Trans.

\$5.00

I Specialize on Operating Sets  
Without Batteries

RAY CAMPBELL

Plate  
Trans.

\$5.00

1217 Dwiggins Street, near N. Huntington Drive, Two Blocks from Sierra Vista Station,  
LOS ANGELES, CALIF. Phone GARfield 7891. Wholesale Dealers: COOK-NICHOLS.

## STANDARD RADIO CO.

417 West Pico Street, Los Angeles, Calif.

### FADA—ATWATER-KENT AND WESTERN ELECTRIC DEALER

We Carry a Complete Line

Open Model Atwater-Kent Wave Length Cut Down to 200 Meters  
We Are Also Making a Specialty of Sharpening Tuning in Any Radio Set  
2-Tube Harkness Changed to 3-Tube, Guaranteed Perfect Tune-Out on  
Local Stations.

Telephone WEatmore 1560

Open Evenings Until 9 o'clock



## Timely Trade Topics

Owing to a misunderstanding the regular meeting of the Radio Manufacturers Agents Association of Southern California will be held Friday, February 11, at noon, in the Chamber of Commerce building. In our last issue we stated that the meeting would be held on February 4, but a change in plans was made after we went to press.

Herbert H. Horn, 1629 South Hill street, Los Angeles, is adding to the lines of parts he is distributing the following: Yaxley, Clarostats, Chief Crystal, Wireless Products, Celestine tubing and panels and Silver-Marshall.

The Vesta Battery Corporation in 1926 broke all previous sales records and are now looking forward to a banner year in 1927. The Vesta Corporation are entering their 30th year as a manufacturer.

F. D. Elmore, factory representative for Bosch Radio, has been transferred from San Francisco to Los Angeles, where he is working through the Reiman Wholesale Electric Co., distributors for Bosch. Mr. Elmore is no stranger to Southern California as he lived here for several years previously to going to San Francisco, and is well acquainted with the radio trade in this territory. He will render the Bosch wholesaler and retailer a real service.

For the convenience of their many patrons the A. & A. Furniture Company of 1117 East Sixty-third street, Los Angeles, have opened a display room at the United Radio Store, 709 South Main street, at which place their various models can be seen.

Schreder-Driscoll-Barnes Company, 216 Detwiler Building, Los Angeles, have been appointed representatives for Browning-Drake.

Mr. Burt G. Close, sales manager of the King Mfg. Co., Buffalo, N. Y., advises that they added extensively to their manufacturing equipment and assembly space. These changes will make it possible to greatly increase production and take care of the 1927 business.

The new Stromberg-Carlson output unit called "Audio Filter" has quickly gained approval as evidenced by the fact that Western Radio, Inc., 1224 Wall street, Los Angeles, reports the



sale of over 1,500 last month. Its purpose is to relieve the speaker windings of the direct current component of the output circuit, assuring good cone speaker performance on any set regardless of whether power tube is used or not.

William McCabe is well known to all the radio trade in Southern California, having been a salesman in the wholesale business for some years. He is now associated with C. W. Smith company, distributors for Utah Speakers and units, the Walbert and McMillan line of receivers. McCabe was previously with Western Radio, Inc.

The Yale Radio Electric Company have been appointed exclusive distributors for Southern California for Modern B Eliminators and Elkon Products.

The Elkon Company have just brought out a new 3 amp. charger and a new A eliminator, both of these devices utilizing the famous Elkon principles of crystal plate rectification and do not require tubes or acid electrolyte.

## Broadcasters' Digest

Warner Brothers have completed arrangements with L. E. Behymer and the LaVina Investment Company which will result in the presentation at their radio station, KFVB, Sunday evening, February 13, of the famous Tipica Mexican orchestra, which is shortly to appear in concerts at the Philharmonic auditorium.

This will be its only radio appearance and listeners in to KFVB will have the opportunity of enjoying for two hours and a half the greatest musical treat ever broadcast.

Station KGA, Spokane's new broadcasting station, on a wave length of 241 meters and 5000 watts, has received thousands of letters congratulatory to its recent dedicatory program. We expect to have complete broadcasting schedule as well as detailed programs in our next issue.

An artist who has come to the foremost rank more recently is Georgi Shkultetsky, Russian basso. Shkultetsky made an impression when he sang the Volga Boatman song in the prologue of the picture bearing the same name several months ago. He is an exclusive KNX artist.

Gladys Meyers, now Mrs. Roland Hucie, is now with the KMTR office staff after having been with KHJ for three years in connection with program arrangement duties.

A story has reached Washington to the effect that a scientist in the vicinity of one of the very largest broadcasting stations in the country is lighting his tubes from the power broadcast from the station's antennae and, therefore, he is securing the power to operate his set without batteries.

Louise Miller is the new KHJ studio pianist, succeeding Jacques Alberti. Miss Miller is already well known in local musical circles.

Maurice Gunsby, KPO's popular tenor, composer of popular ballads, and Victor phonograph artist, gets so many requests for favorite songs from the radio audience, that it will probably take many years for him to catch up with them.

The receipt recently of a mysterious box containing a dead owl, with an express charge due on it, has caused it to be rumored that the famous KGW Keep-Growing-Wiser Order of Hoot Owls, will change its name to something pleasantly suggestive like the "Kandy Kids." At least it would bring an end to the influx of owls, dead and otherwise, which so many enthusiastic fans feel moved to send in.

Swain: "I'd like permission to marry your daughter, sir."

Father (crabbily): "What's your business?"

Swain (airily): "I'm a radio announcer."

Father: "You're accepted! You're the first man to say good night and mean it!"—*Science and Invention Magazine*.

KGFH are the call letters of a new station at La Crescenta, 13 miles from Los Angeles. The station is located nearly 1400 feet above sea level. They are broadcasting on 218.8 meters and for the present are using 100 watts. The license is in the name of Frederick Robinson and our old friend Hastings, better known to radioland as "The Greek God," is announcing. We are glad to welcome him on the air again and wish him and KGFH every success.



# OUR EXCEPTIONAL OFFER

*Get the Two Greatest Radio Magazines  
For Almost the Price of One!*

## SAVE \$2.00

**RADIO NEWS**—The National Radio Monthly  
with the largest circulation and following of  
any Radio publication in the world—

*Regular Price \$2.50*

**RADIO DOINGS**—The Leading Pacific Coast  
Radio Weekly—the Radio authority of the  
Pacific Coast—

*Regular Price \$3.00*

These two leaders in their respective fields—the great  
National Monthly and the great Pacific Coast Weekly—

### BOTH NOW FOR \$3.50

*You Can't Afford to Pass This Offer By*

Attach Money Order, Check or Currency to the Coupon and Mail to Us  
Right Now

**RADIO DOINGS,**  
407 E. Pico Street,  
Los Angeles, Calif.

*Or Conger & Moody,*  
Sharon Bldg., San Francisco, Calif.

Send me **RADIO DOINGS** and "**RADIO NEWS**" for one year.  
I enclose \$3.50.

Name.....

Address.....

City and State.....

(Specify NEW or RENEWAL)

The 1927 deluxe model 45,000 cycle superheterodyne by Gerald M. Best is announced in "RADIO" for February--- on sale at all news stands January 28th. This "Super-de-luxe-super" is Best's crowning achievement. The hundreds of thousands of followers of Best's super will realize the importance of this announcement.

And that's not all. The February issue of "RADIO" also shows how to use the Infradyne amplifier on the Bremer Tully, Silver Marshall, Browning Drake, and Hammarlund Roberts HI\*Q receivers. What a difference this amplifier makes to your present receiver. Another feature in February "RADIO" is the construction of a radio-electric phonograph. A brand new idea by an eminent authority. Everybody can cash in on this scoop. About a dozen other feature articles round out the greatest issue in our ten years' history of radio magazine publishing. It will pay you to subscribe to "RADIO" for one year. It costs but \$2.50 and insures regular receipt of copy.

**PACIFIC RADIO PUBLISHING CO., Inc.**

Pacific Building

San Francisco, Calif.



# Natural Rounded Tones



No. 9303 Master Ray-O-Vac

They cannot come out of even the finest loud speaker unless the "B" current that produces them comes from a power unit that has low internal resistance.

Ray-O-Vac batteries have only one-sixth to one-third as much internal resistance as other types of "B" power units. That is why they give better reception.

At the same time they have longer life. A new type of construction—exclusive with Ray-O-Vacs—gives them from 10% to 15% more staying power than ever before.

No hot pitch is poured over the unit cells. So its excessive heat does not devitalize the electrolyte.

Ask your dealer for them by name and number.

---

## FRENCH BATTERY COMPANY

MADISON, WIS.

737 Terminal St.

Los Angeles



# FEDERAL Ortho-Sonic

## D-10 ORTHO-SONIC

Five tubes—wet or dry battery type. Balanced tuned radio frequency. Centralized control. Very selective and sensitive. Genuine mahogany cabinet, mahogany lined. Finished a rich brown.



Value and Performance.

True Ortho-Sonic Tone  
Quality

Priced at \$100  
(Less Accessories)

The Model D-10 set is recommended to those who wish to obtain the greatest amount for every radio dollar spent.

Other Beautiful Models Priced from \$150 to \$1000

We Recommend

### Eliminators

Elkon  
Modern  
Sterling  
Balkite

*Cunningham*  
RADIO TUBES

Since 1915—  
Standard for all Sets  
In the orange and blue carton

### Speakers

Amplion  
Enchanter  
Herald  
Fine Arts

Wholesale Distributors

# Yale Radio Electric Co.

LOS ANGELES

1111 Wall Street

WEstmore 3351



**This file including all text and images are from scans of a private personal collection and have been scanned for archival and research purposes. This file may be freely distributed, but not sold on ebay or on any commercial sites, catalogs, booths or kiosks, either as reprints or by electronic methods. This file may be downloaded without charge from the Radio Researchers Group website at <http://www.otrr.org/>**

**Please help in the preservation of old time radio by supporting legitimate organizations who strive to preserve and restore the programs and related information.**