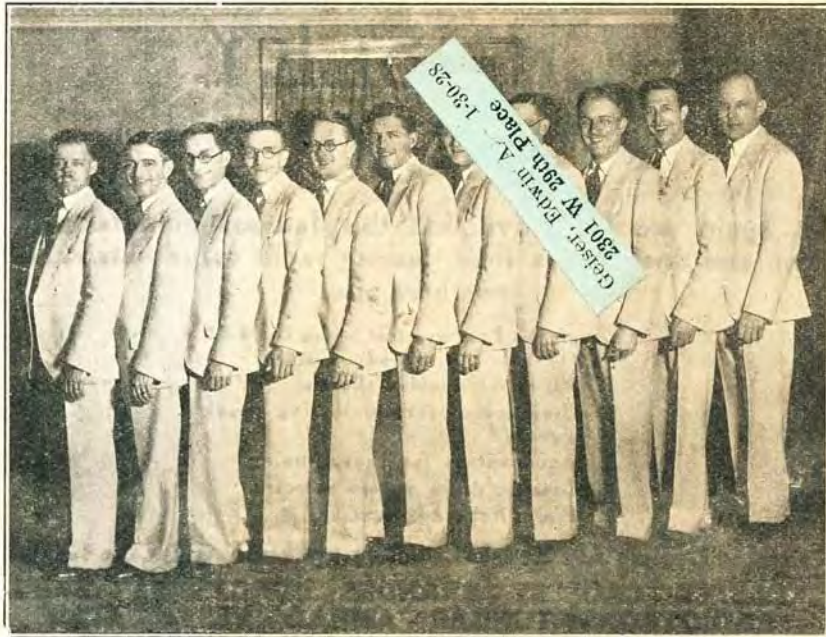


RADIO DOINGS

RED BOOK OF RADIO

*The Radio Authority
of the
Pacific Coast*

10¢
WEEKLY



COLE McELROY'S ORCHESTRA, KGW, PORTLAND, ORE.

Exclusive Story by
Kenneth G. Ormiston
FEBRUARY 6-12, 1927

Vol. X

No. 6



\$55
for the
CROSLEY
5-50

is again proof positive that this famous manufacturer can and does give a solid, lasting radio value obtainable nowhere else.

Check the Features that make the 5-50 a milestone in radio history:

1. All metal shielded chassis.
2. Crescendon for increasing weak signals.
3. Acuminators for sharp tuning.
4. Graphic drum station selector.
5. Power tube adaptability.

Crosley Dealers Are Reliable. They are building for the future.

KOLSTER - CROSLEY - BRANDES - BURGESS BATTERIES
RADIOTRONS - TUNGAR - AMRAD - VESTA - ACME
MODERN - WESTINGHOUSE "A" AUTOPOWER

Distributed by

H. Earle Wright, Incorporated

123-129 Second Street
SAN FRANCISCO

415 East Eighth Street
LOS ANGELES

Hear the Popular 5-50 and Other

CROSLEY

RECEIVERS

At the Following Authorized Dealers in Los Angeles and Vicinity:

LOS ANGELES South

DAVIS RADIO Co.
2817 S. Main St.
Westmore 6948

DE HOOG BROTHERS
6120 S. Broadway
THornwall 0224

LOS ANGELES MUSIC Co.
4410 S. Broadway
AXridge 5479

STURGIS MUSIC Co.
4711 S. Broadway
AXridge 7106

Downtown

AMERICAN RADIO
108 E. 8th St.
TUcker 6028
(Branch 152 W. 2nd,
Pomona)

FRANK RADIO Co.
715½ S. Main St.

STARR PIANO Co.
630 S. Hill St.
TRinity 3905

Southwest

COLLINGS HARDWARE Co.
3425 S. Vermont Ave.
BEacon 7025

L. A. DUNCAN
2891 W. Pico St.
EMpire 1141

FLETCHER RADIO MUSIC Co.
4705 S. Vermont Ave.
VERmont 9589

WESENBERG RADIO MUSIC
Co.
3819 S. Western Ave.
VERmont 7929

WEST COAST RADIO Co.
2407 W. Slauson Ave.
VERmont 1893

Wilshire

BIMINI ELECTRIC & RADIO
Co.
109 S. Vermont Ave.
DRexel 2990

CROSBY ELECTRIC Co.
3310 W. 6th St.
WASHington 0372

Hollywood

ANDREWS RADIO Co.
1704 McCadden Place
GLadstone 0704

C. R. HAUSER
4310 Melrose Ave.
OLympia 2666

OTTO K. OLESEN
ILLUMINATING Co.
6548 Hollywood Blvd.
GLadstone 5194

BELL

G. C. PYLE ELECTRIC Co.
605 Baker Ave.
DElaware 2287

GLENDALE

BUDWIG RADIO Co.
201 N. Brand Blvd.
Glendale 1801

KENDALL TUNE'S RADIO
SHOP

Brand Blvd., Cor. Vassar
Glendale 2195-J

PASADENA

ASHTON'S RADIOELECTRIC
STORE
1762 E. Colorado St.
Colorado 4042

F. C. NASH & Co.
141 E. Colorado St.
Colorado 5311

SOUTH PASADENA

THE RADIO ELECTRIC
STORE
1161 Fair Oaks
Colorado 6574
Eliot 3397

CROSLEY RADIOS

"For Complete Satisfaction"

ELECTRIC REPRODUCTION

Heretofore \$400 to \$1,000 — Now \$35



Through the invention of the ELEC-TRU-TONE, the Phonograph Modernizer, the humblest home may now enjoy the marvel of Electric Reproduction that has been thrilling the financial fortune of Beverly Hills.

The ELEC-TRU-TONE scientifically balances the musical overtones, giving all sounds a fidelity that is uncanny. You also hear the bass instruments that were lost on your old phonograph. There is sufficient volume, under control, for dancing in a large room.

The ELEC-TRU-TONE can be attached in one minute to your present phonograph and radio set. It does not prevent your radio from operating in the usual way.

The light weight of the ELEC-TRU-TONE reproducer gives you long life from your records.

For Sale by Leading Radio Dealers

Manufactured by

The Elec-tru-tone Corp., Hibernian Bldg., Los Angeles

Distributed Nationally by

Baker-Smith Co., Inc., Call Bldg., San Francisco

California Jobbers

THE ELECTRIC CORP.

1050 Santee Street
Los Angeles

YALE RADIO ELEC. CO.

1111 Wall Street
Los Angeles

ELECTRIC SUPPLY CO.

370 Eleventh Street
Oakland

KIERULFF & RAVENSCROFT

645 Howard Street
San Francisco

COAST ELECTRIC CO.

744 G Street
San Diego

CONVERT YOUR OLD PHONOGRAPH

into a

Marvelous Electric Reproducing Phonograph with **THE ELEC-TRU-TONE**
ELECTRICAL APPLIANCE SHOP

336 South Broadway, Los Angeles

Hear What **THE ELEC-TRU-TONE** Will Do

to your old Phonograph, in conjunction with your Radio Set
Music Dept., 8th Floor

BROADWAY DEPARTMENT STORE

Fourth and Broadway, Los Angeles

New York Office
J. W. HASTIE
155 East 42nd Street
Vanderbilt 4661

Chicago Office
A. G. RUDOLPH
500 N. Dearborn St.

San Francisco Office
CONGER & MOODY
Sharon Building
Kearney 8483

Radio Doings

Trade Mark Reg. U. S. Pat. Off.

407 East Pico Street, Los Angeles, Calif.

"The Red Book of Radio"

H. C. CHARLES
Editor

FORBES W. VAN WHY
Technical Editor

J. S. MILLER
Associate Editor

MAJ. LAWRENCE MOTT
Associate Editor

(Entered as second-class matter, Nov. 25, 1922, Los Angeles, Cal., Post Office, under Act of March 3, 1879.)
Copyright, 1925, by Horwood Publishing Co.
Issued Weekly. Ten Cents a Copy. Three Dollars a Year. Canada and Foreign Countries, \$3.50 per Year.

Vol. X Los Angeles FEBRUARY 5, 1927 San Francisco No. 6

CONTENTS

	PAGE
Novel Prize Contest - - - - -	13
Radio—Here and There (<i>Illustrated</i>) - - - - -	14-15
<i>Exclusive Story by Kenneth G. Ormiston</i>	
Radio Making People Ear-minded - - - - -	16
Grand Opera Broadcast a Notable Success (<i>Illustrated</i>) - - - - -	17
A Popular Musical Organization (<i>Illustrated</i>) - - - - -	18
Miss Hope Dare, Noted Beauty, and Her Radio (<i>Illustrated</i>) - - - - -	19
Radio Legislation on Its Way - - - - -	22
Three-Act Comedy "Applesauce" Broadcast (<i>Illustrated</i>) - - - - -	22
Radiograms - - - - -	23
DX Club Correspondence - - - - -	24
Trouble Shooting and Query Department - - - - -	26-27
<i>Edited by Forbes W. Van Why, A.I.E.E., A.I.R.E.</i>	
Woman's Page - - - - -	28
<i>Edited by Carey Preston Rittmeister</i>	
Radio Topics of the Day - - - - -	30-31
Latest Broadcast Changes - - - - -	32
Time Tables - - - - -	33 to 46
Detailed Programs - - - - -	50 to 86
Who's Who in Radio (<i>Illustrated</i>) - - - - -	88
Timely Trade Topics - - - - -	89
Broadcaster's Digest - - - - -	91

(See Page 18 and Win a Prize)

ONLY \$3.00 A YEAR

Have RADIO DOINGS mailed to your home every week. Fill out blank below. Either mail to us, or your dealer will be glad to take care of it for you. Please indicate whether NEW or RENEWAL.

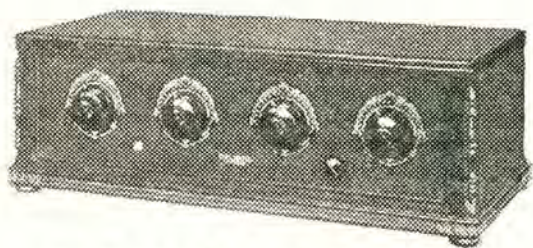
HORWOOD PUBLISHING CO., 407 E. Pico St., Los Angeles,
CONGER & MOODY, Sharon Building, San Francisco, Calif.
Gentlemen: I enclose \$3.00, for which send me RADIO DOINGS for one year.
NEW—RENEWAL.

Name _____
Address _____

A REAL SENSATION
IN THE NEW
Walbert Isofarad Radio

No Batteries

Just Plug in the Light Socket



47-P-T, \$400, with Tubes

Walbert's electric light operated model for use on 110 volt 60 cycle A-C. Eight tubes, 6 Kellogg A-C, one UX-210 power and one UX-216B rectifier tube.

Dealers Write for Territory

C. W. SMITH CO.

"The Home of Utah Speakers"

1125 WALL STREET

LOS ANGELES

WEStmore 3291

We Carry In Stock



the full range of

CeCo Tubes

Used by Wm. R. Davies in winning the world's long distance record and endorsed and specified by all leading national authorities.

CeCo Tubes Spell Satisfaction

Use the Best

They Cost No More

**Don't Accept
A Substitute**

If Your Dealer Happens to Be Out of

CeCo Tubes

He Can Get Them for You From Us

SATISFACTION GUARANTEED

Authorized Wholesale Distribution

. C. C. LAWTON CO.

1125 Wall St.

Phone WEstmore 3291

Los Angeles

The Finest Radio Set is CeCo Tubes Will Improve Clearness and Tonal

"CeCo TUBES Are Superlative" Say Users

GO to your radio dealer and hear how good radios are made still better when CeCo tubes are used exclusively. Note the marked improvement they make in clearness, tone and distance reception by increasing the sensitiveness of the radio set. Any CeCo dealer will supply you with CeCo tubes made especially for your radio set.

*The Unanimous Choice of These
Foremost Radio Engineers*

LAWRENCE M. COCKADAY
ARTHUR H. LYNCH
GLENN H. BROWNING
GLENN L. KING

HERMAN BERNARD
GERALD M. BEST
KEITH HENNEY
KENNETH HARKNESS

CeCo City Dealers

SOUTHWEST
Walker Radio
5835 S. Vermont
Collinge Hardware Co.
3425 S. Vermont
Glen H. Demer
6507 S. Kansas
J. M. Andrews
209 W. 18th St.
Philco Sales & Service
1514 S. Hope
De Hoog Bros.
6120 S. Broadway
H. H. Walker
1323 Venice Blvd.
Sturgis Music
4713 S. Broadway
Nielson & Nielson
3320 Avalon
Tivoli Radio Shop
4204 S. Central

Phair Radio Co.
242 E. Florence

HOLLYWOOD

Cutler Radio
930 N. Western
Barrows-Conkwright
5545 Sunset Blvd.
Hetzel Radio Service
8303 Santa Monica
Hollywood Elec.
6656 Hollywood Blvd.
Hollywood Radio
709 N. Western
Carmel Radio
8165 Santa Monica Blvd.

NORTHWEST

Atwater Radio Shop
3208 Glendale Blvd.



no Better Than its Tubes!

the Distance Reception, Quality of any Radio Set

MORE DISTANCE

On the Same Set from
CeCo Mogul Power Tube

WANT more stations on that radio set of yours? Want the far-away ones you get now to come in more easily and regularly? Then bring your radio set up to date with a CeCo Mogul Power Tube. No other expense. No rewiring.

**CeCo Tubes Cost No More!
You Must Be Satisfied—
That's Guaranteed**

A. J. Tobey Co.

Radio Accessory Jobbers

15th and Hope Sts.

Westmore 4038

Out-of-Town CeCo Dealers

PASADENA, Thomas & Summerville, 41 N. Broadway
Webster Electric Garage
100 E. Union
LONG BEACH, Coast Radio
245 E. Seventh St
LANKERSHIM, W. L. Bain,
5241 Lankershim Blvd.
VAN NUYS, Van Nuys Music Co.
Marsden Electric
HERMOSA BEACH, C. Alexander, 530 Camino Real
MONROVIA, Mack Music Co.
REDLANDS, Dale E. Sliger
State and Third St.

SAN DIEGO, College Service
Park and El Cajon
Maryland Auto Supply Co.
Seventh and F
ANAHEIM, Caverley Radio
217 W. Center
EL CAJON, El Cajon Electric
ELSINORE, Elsinore Plumbing & Electric
GARDEN GROVE, W. E. Ashley
BREA, Bennet's Radio
BANNING, Daly Elect. Store
LA HABRA, C. Perry
117 W. Center St.
POMONA, Falls Tire & Battery Co.
201 East 2nd St.



THIS IS A KIT YEAR

Buy the Kit of Parts for the Set you Want and Built it Yourself.
Outstanding Among the New Circuits are the

Infradyne - Silver Shielded Six Karas Equimatic - Madison Moore

All Parts for the IMPROVED INFRADYNE as Specified by Inventors now here. Complete Data in the Official Manual—25c. Send for it Now.

Complete stock of COAST COUPLER LONG WAVE RADIO FREQUENCY TRANSFORMERS, in stock for immediate delivery as advertised on page 79 of this issue.

Look over the 630 Complete Kit of Parts for the SILVER SHIELDED SIX. Kit includes all Specified Matched Parts for the Set. Completely Shielded—using the famous 220 Audio and 221 Output Transformers, \$95.00—A Set Good for Years.

The Kit of Parts for the KARAS EQUIMATIC lists at \$60.20, and will produce a Set mighty hard to beat. Karas' latest.

MADISON MOORE "One Spot" Transformers are here. No more harmonics. Get a line on these—one of the biggest improvements of the year.

DEALERS: Park Next Door at Our Expense

Radio Supply Co.

WHOLESALE

920 S. Broadway

VA. 6063

Los Angeles

New 1927 Catalogue Now Ready—Send For It

Changes Are Made

Every day in Radio—and to keep your set abreast of the times—you will need new parts. The largest up-to-date stock of parts is at 920 South Broadway. Have your dealer pick up what you need.

Aaleo Loops
Accurate Dials
Acme Apparatus
Acme Trickle Chargers
Advance Crystals
Aero Products
Aerovox Wireless Products
Alden Mfg. Co. Parts
All-American Products
Amertran Products
Amperites
Amseco Condensers
Arceo Coils
Balkite Chargers, Etc.
Benjamin Elec. Mfg. Products
Brach Products
Brandes Speakers
Branston Coils
Bremer-Tully Products
Camfield Coils
Carborundum Products
Cardwell Condensers
Carter Products
Ceco Tubes
C R L Var High Resistances
Chicago Kester Solder
ClaroStat
Continental Condensers
Crescent Transformers
Daven Radio Parts
DeJur Rheostats
DeLux Products
Dietsgrand Speakers
Dongan Products

Dubiller Condenser Corp.
Dudlo Mfg. Co. Wire
Eby Binding Posts
Ekko Ground Clamps
Electrad Products
Electrohot Soldering Irons
Elkon Chargers
Formica Insulation Co.
Franco B. Batteries
Frost Products
General Radio Parts
Goodrich Rubber Panels
Hammerlund Products
Harness Kits
Hedgehog Transformers
H-K Soldering Lugs
Hoosick Parts
Jefferson Products
Karas Products
Kelbrackets
Kellogg Parts
Switchboard Supply
Kodel Products
Kurz-Kaseh Dials and Knobs
Leaf-Burkhard Cone Speakers
Lemeo Transformers
Madison Moore Units
Marco Products
Mignon S. L. P. Condensers
Mueller Universal Clips
Muter Lightning Arrestors
Snald Truphonic Units, Etc.

National Co. Parts
Pacent Products
Penetrola Kits
Polymet Mfg. Co. Condensers
Premier Parts
Raco Aerial Wire
Radiall Co. Amperites
Rauland Lyric Transformers
Raytheon Tubes
Remler Products
Samson Transformers
Sangamo Condensers
Sensory Insulators
Silite Trickle Chargers
Silver Marshall Products
Spaulding Bakelite Panels
Steinite Eliminators
Sterling Meters and Testers
Stevens Tools
Testrite Hydrometers
Thordarson Transformers
Thorola Coils
Tobe Condensers
Tom Mack Products
Tower Speakers
Trim Cone Speakers
Universal Battery Clips
Vesta Power Units
Victoreen Parts
Weston Products
Willard Batteries
X. L. Variometers
Yaxley Products

**THORDARSON, ALL-AMERICAN AND MAGNAVOX
REPLACEMENT TRANSFORMERS IN STOCK**

VESTA 35 and 50 Amp. and HOBICO A Power Units

**ACME, GENERAL RADIO, ALL-AMERICAN, KODEL,
BALKITE, SILVER MARSHALL and STERLING
ELIMINATORS**

**ACME, STERLING, VESTA, BALKITE, TUNGAR and
SILITE TRICKLE CHARGERS**

DEALERS: Park Next Door at Our Expense

RADIO SUPPLY CO.

WHOLESALE

920 S. Broadway

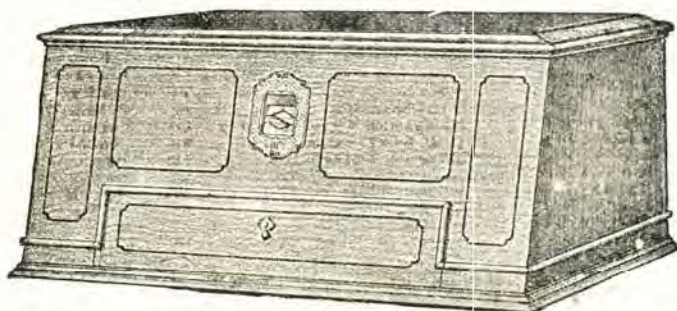
VA. 6063

Los Angeles

New 1927 Catalogue Now Ready—Send For It

Bremer-Tully

Counterphase Receivers



Counterphase-Eight, Cabinet Model

The new Counterphase is setting records East, West, North and South for Daylight Reception, the hardest test for any receiver. Scores of letters received attest accomplishments never before equaled on any sets except the B-T Eight.

SOLD BY FRANCHISE DEALERS

McCLELLAND-FELTHOUSE CORPORATION

Factory Representatives

1358-60 S. Figueroa Street
Los Angeles
WEstmore 5586 and 6519

515-517 Eddy Street
San Francisco
Franklin 6226

Editorial Comment

Win a Prize!

IN this issue Radio Doings offers to its hosts of friends the first of a series of wonderful opportunities for self-expression on an important Radio question. To stimulate response from our readers a \$67.50 PHILCO A AND B ELIMINATOR is offered for the best letter of not more than two hundred and fifty words to reach our office before 6 p. m. February 21st. As judges of this contest the following well known Radio men have generously offered their services: G. Allison Phelps, the Radio Philosopher of KMTR; A. G. Farquharson, Secretary, Radio Trades Association; and N. E. Brown, Radio technician and writer.

The latest word from Washington is that the conferees of the House and Senate have been able to agree upon the different clauses and articles incorporated in the new Radio bill. Senator Dill's bill was backed up strongly by the Senate. Representative White's bill had the House of Representatives strongly behind it, and neither of the bills could pass the other branch of Congress, as each branch stood solidly behind their own bill and demanded that it be ratified. Fortunately for all of us, this attitude of stubbornness has passed away and the committees are now co-operating.

The men of the Radio industry, the broadcasters and the President have all given their ideas as to what the Radio bill should cover, but as yet very few, if any, of the Radio fans of the country have been able to express themselves on this most important subject.

The Radio bill is of vital interest to the manufacturer of Radio sets and to the broadcaster, as it means the life of his business; but it is also of vital interest to the listeners-in, as the programs of music and news have become an integral part of the life of the American people.

Believing that many of our friends would welcome the opportunity of expressing themselves, we have decided to give a prize of a Philco A and B Eliminator for the best letter of not more than two hundred and fifty words, telling what regulatory articles should be in the bill so as to allow the set owners to derive the greatest amount of pleasure and benefit from the broadcasting programs. In other words, write down simply and plainly your idea of a national Radio law which, if passed, would control broadcasting to the greatest advantage of all those vitally interested—yourself—broadcasters—radio manufacturers.

This contest is open to all of our subscribers and readers. A few moments time in writing down your version of a workable national Radio law gives you a chance to win the latest type of heavy-duty Philco A and B Eliminator—the most acceptable present to a set owner. The winning letter and the name of the writer will be published in the Radio Doings issue of March 6th.

Sit down NOW and give us your idea.

Radio--- Here and There

By Kenneth G. Ormiston

A strange stampede of tiny electrons, flying from atom to atom in a copper wire—

Others shooting out from an incandescent filament in a glass globe, banging against a metal target—

Mysterious forces called magnetism rising and falling around coils of wire—

Unseen waves in an unseen medium,

didn't get away to a flying start. The above definition of radio is as a newspaper reporter would write it, and this poor scribe begs your indulgence if close and prolonged contact with the gentlemen of the press results in an occasional poetic outburst. There's a lot in this "environment" stuff, you know.

We will go right on from where we left off just a year ago. Let's see— Oh, yes, we were writing about radio, and since then we have had the opportunity to observe radio broadcasting and reception conditions in other parts of the country, and a few impressions thus gained may be of interest to the readers.

The listeners-in on the Pacific Coast are fortunate in one respect. Subsequent to the decision of a judge, which deprived the Department of Commerce of all jurisdiction over radio broadcasting, the coast stations have in the main abided by their original wave-length assignments, and the newly erected stations have been few and their owners have used good judgment in selecting wave-lengths.

This has resulted in a condition of harmony with a minimum of interference and general satisfaction to the fans. Such is not the case, however, in many sections in the East. There was a general stampede for the desirable wave channels, with the inevitable result that at some frequencies there is only a terrific howl caused by the melodious hetrodyning of a flock of carrier waves with not the slightest possibility of any single program being received at localities other than local to the various stations.

The salvation of radio hinges upon action of Congress and the appointment of a commission to straighten things



KENNETH G. ORMISTON

hurtling through stone walls, trees, human bodies—

Circling the earth seven times in a second, carrying the voice and music of man eternally—ever diminishing, but never dying—

* * * *

Phooey! We may flop before we finish this colyum, but nobody can say we

Radio --- Here and There—Continued

out. This commission should have vested in it full and complete authority without any strings attached, and the writer would herewith like to suggest to the powers that be that one Colonel Dillon be put on the commission. Then we will know that the Pacific Coast will get a square deal. Everybody who agrees say "Aye. Motion carried unanimously. Thank you!"

Now as to quality of transmission. You may roam the country from one end to the other and you will never find better quality than certain of our coast stations maintain. The same is true of the quality and variety of programs. Some of the Eastern stations have announcers that do a better job of it than our boys, but then they have been at it longer!

One thing is immediately striking, particularly on station WJZ. This is the smoothness with which microphone switching is done when changing from one remote control station to another or back to the main studio, etc. It is done in the middle of a sentence without a pause, click or change in microphone hiss. You suddenly realize that a different voice is speaking and you wonder just where in the sentence the change was made.

The loop style of broadcasting is done extensively. That is, tying ten or more stations together by telephone lines and putting the same program through them all simultaneously. The public does not always take too kindly to this scheme, for when you roam your dials and find the identical program in ten or more places you get the idea that somebody somewhere is trying to cram something down your throat whether you like it or not. From the advertiser's standpoint, however, it increases the "circulation" and no doubt pays.

A fact which becomes apparent in using different receivers in various parts of the country is that radio reception conditions vary greatly with the result that receivers of a certain type are better adapted to meet conditions in one locality than in another.

Perhaps in no other part of the country do we find such a peculiar state of affairs as we have right here in Southern California. And while these conditions are adverse and more obstacles exist in the pathway of the DX fan than elsewhere, it only adds zest to the game and makes for greater efficiency. The enthusiasm and patience of a real radio fan are unbeatable.

Just as when the government restricted the amateurs in power and wave-length, they persistently developed amazing efficiency under conditions which were supposed to be handicaps; so the broadcast fans of Southern California are overcoming limitations imposed by Mother Nature through the use of sets of the greatest efficiency and the development of unusual skill in tuning. Good luck to 'em!

If we may be a mite personal in closing, we would say that while it is an education to listen to the Eastern stations, with their famous symphony orchestras, great sporting events, dramas, inimitable announcers, and what-not, by far the greater thrill was when in the wee sma' hours the booming voice of "Kay Eff Eye" filtered through the static.

After all, there is no place like home!

Mr. Ormiston will continue his "Radio—Here and There" in next week's issue. It will contain many instances of human interest.—Editor.

Radio Is Making People "Ear Minded"

Continual listening to radio programs is gradually but noticeably changing our psychological make-up. It is making us "ear-minded" and is forcing us to listen with our ears alone, without the aid of the sense of sight, which we have always unconsciously used. This is the opinion expressed by Charles Magee Adams, radio author, in *Radio News Magazine*.

Sight for centuries has occupied the place of overwhelming predominance among the senses, because it has the best equipment, Mr. Adams says. The nerves which connect the eyes with the brain are many times more complex than those which connect the ears with the brain. This is why, at such a place of din and bedlam as a football game, the strongest impression you carry away is one of color and movement—things seen. Further, sight is infinitely more selective than hearing, he claims.

"Have you ever tried to use a telephone in an office full of clattering typewriters?" he asks. "If you have, the chances are that you had to guess at half of what the person at the other end of the line was saying. Yet in the same place you have no trouble reading. To put things in radio parlance, sight tunes more sharply than hearing.

"You can remember what you have seen several times longer than what you have heard. If you have a friend you have not seen for a number of years, you will find that you can recall his or her features without trouble, but you have only a faint general impression of the voice. Sight is a superior sense in efficiency and equipment, which is why we unconsciously let it do much of the work we think we have delegated to hearing. Most people not only make more use of sight than they do of hearing (even when

hearing is the sense they suppose they are using), but think in terms of sight of things which could just as logically be thought of in some other way."

Radio has changed all this, declares Mr. Adams, for you can't do anything but hear by radio.

"Since broadcasting started," he writes, "the only way we have been able to get the programs has been by hearing, and more than that, hearing with our ears only. The result has been that these organs, pretty much ornamental (more or less) in most everyday uses, have been given more work to do in the last five years, bringing us speeches, lectures—the whole varied offering of broadcasting.

"While you had formerly, as you thought, to keep your eyes glued to the loud speaker to get what was coming through the ether, you can now read, look at something else, even turn your back on the set, while you keep on hearing just the same.

"Broadcast plays have come to mean more. At first you were not convinced by simply hearing the voices of the hero and heroine coming through the loud speaker. That was not like seeing them on the stage, mainly because you had always been used to seeing them on the stage.

"Church services have come to mean more. Before you had trained your ears to do the work for which they were originally designed and which the eyes had usurped, stained glass windows, gothic architecture and handsome pews put you in the mood for worship, even more than did the deep peal of the organ and the solemn chant of the choir. But now these things alone, coming out of your loud speaker, bring just as much of the atmosphere of the church.

(Continued on page 90)

Grand Opera Broadcast Has Many Advantages

"The benefits to be accrued from broadcasting grand opera are many and varied," declares Comm. Fortune Gallo, impresario of the San Carlo Grand Opera Company, now in the height of its three-weeks Los Angeles season at the Philharmonic Auditorium, which ends February 5th.

"Aside from the commercial advantages gained by the company broadcast-



COMM. FORTUNE GALLO

ing an opera, much good is done to those in far-off and remote places who appreciate good music and who rarely, if ever, have an opportunity to visit the opera house. Hospital patients, poor people, old folks, a lonely prospector here, a mountain dweller there—all thus have the opportunity of hearing grand opera as it is actually sung."



VALLEY B Power Unit

The Valley "B" Power Unit takes the place of "B" batteries by providing plate voltage from the house lighting circuit for any radio receiving set of twelve tubes or less. For Reliable reception, this unit operates with the famous Raytheon Tube. Priced to sell at \$50, complete.

Valleytone Model No. 52

The small cut below shows the Valleytone Radio Receiver, 5-tube, tuned radio frequency. Two dial control. Wired so that the use of the power tube is optional. Price \$96.00.



VALLEY ELECTRIC CO. ST. LOUIS, MO.

Pacific Coast Representative

Western States Sales Co.
286 Chronicle Building, San Francisco
445 San Fernando Bldg., Los Angeles

Popular Musical Aggregation

One of the most popular and versatile orchestras, which broadcasts weekly over Station KFI, Los Angeles, is the Packard Six, whose photograph is here

trumpet and clarinet; Ray Pruden, saxophone and clarinet; Lang Meredith, drums; Bill Hennessy, banjo. Many complimentary reports have been re-



shown. The personnel of this musical aggregation is: Von Maggard, piano; Wall Haines, saxophone, trumpet and clarinet; Chick Theck, saxophone,

ceived from KFI's receptionists all over the country, and for a real treat tune in on KFI every Sunday night, between 10 and 11 o'clock.

RADIO DOINGS PRIZE CONTEST!

We are most anxious to know what YOU think about certain essential matters pertaining to Radio so that we can be of even greater service and interest to our readers. Take advantage of these mutually beneficial contests and, for a short letter of not more than two hundred and fifty words, win a most useful prize. Surely you have some idea, some belief or some grievance directly pertaining to the subject of one of these contests that you have wanted to get off your mind for some time. We want you to feel that this is your chance to express yourself with real effect. A series of contests with appropriate prizes will be started by Radio Doings on the following dates:

February 5th	- - - - -	Closes	February 21st
February 12th	- - - - -	Closes	March 1st
February 19th	- - - - -	Closes	March 15th
February 26th	- - - - -	Closes	March 30th

See Page 13 for Particulars of First Contest

Sitting Pretty



Miss Hope Dare, Champion Horsewoman of Texas, winner of numerous beauty prizes in Southern California, and a dancer of note, uses a Federal Ortho-Sonic receiver on account of its realistic tone.

FEDERAL ortho - sonic

DEALERS

Invite You to Hear the Federal Ortho-Sonic Radio and Judge for Yourself

LOS ANGELES

Hollywood

CRAIG RADIO SERVICE
7022 Melrose Ave.
WHitney 7312

GLOW ELECTRIC CO.
5910 Hollywood Blvd.
HOLLYWOOD 4610

HETZEL RADIO SERVICE
8303 Santa Monica Blvd.
GRanite 5874

SHEPHERD RADIO SERVICE
7562 Sunset Blvd.
GRanite 7482

West Wilshire

A. C. HUGHES
1046 S. La Brea Ave.
ORegon 7603

Echo Park

E. E. EAGLES
1704 Sunset Blvd.
WashingtOn 9588

Highland Park

F. & H. RADIO SHOP
6011 York Blvd.
GARfield 8962

Huntington Park

P. A. DOUGHERTY
158 S. Pacific Blvd.
DElaware 4852

South

JENKINS RADIO
8450-52 S. Broadway
THornwall 4460

WEST STATES ELECTRIC CO.
4751 S. Broadway
AXridge 2786

Southeast

MANCHESTER RADIO
ELECTRIC SHOP
1522 E. Manchester Ave.
DElaware 0460

Southwest

GENERAL SUPPLY STORES
N. E. Cor. 46th & Western
VERmont 6683

RIMPAU RADIO
(Hereford & Whitehead)
4808 W. Washington Blvd.
WHitney 3061

THE RADIO-ELECTRIC SHOP
1428 W. Sta. Barbara Blvd.
VERmont 7440

VERMONT CENTER RADIO
SHOP
6219 S. Vermont Ave.
THornwall 7015



MODEL E-10

Six Tubes—Wet or Dry Type. Single control without loss of efficiency. Extremely selective. Maximum receiving range. All metal construction. Illuminated scale—acts as pilot light. Perfect control of volume. Brown Mahogany Cabinet. Rosewood Inlay. Without Accessories—\$150.00.

Yale Radio Electric Co., Wholesale Distributors, 1111 Wall St., Los Angeles

Look For
This Sign



It Means
Safety and
Satisfaction

FEDERAL ortho - sonic

DEALERS

Invite You to Hear the Federal Ortho-Sonic Radio and Judge for Yourself

SOUTHERN CALIF.

ALHAMBRA

O'NEAL RADIO
2033 S. Garfield Ave.
Alhambra 2782-J

BURBANK

STOLPER ELECTRIC SHOP
114 E. San Fernando Blvd.
Burbank 809-W

COVINA

H. R. HOUSER
115 College St.
Covina 132-21

GLENDALE

BROADWAY ELECTRIC
(Willard Hellman,
Radio Dept.)
202 E. Broadway
Glendale 3064

LANKERSHIM

LANKERSHIM MUSIC CO.
5317 Lankershim Blvd.
Lankershim 174

LONG BEACH

KELM RADIO CO.
147 E. 4th St., at Locust
Long Beach 618-329
RADIOLAND SERVICE CO.
734 E. Anaheim St.
Long Beach 666-239

LYNWOOD

LYNWOOD ELECTRIC CO.
203 N. Long Beach Blvd.
Compton 583

OCEAN PARK SANTA MONICA

PIER AVENUE RADIO CO.
142 Pier Ave.
Santa Monica 61094

PASADENA

THOMAS & SOMMERVILLE
41 N. Broadway
Terrace 0815

REDONDO

J. H. THORP RADIO &
MUSIC SHOP
124 S. Pacific Ave.
Redondo 3621

SAN PEDRO

SAN PEDRO ELECTRIC
261 Sixth St.
San Pedro 884

WHITTIER

H. C. OLDHAM
128 S. Greenleaf Ave.
Whittier 411-293

MODEL D-10

Five Tubes. Centralized control. Very selective and sensitive. Genuine Mahogany Cabinet, Mahogany Lined. Finished in rich Brown. Without Accessories—\$100.00



Yale Radio Electric Co., Wholesale Distributors, 1111 Wall St., Los Angeles

Look For
This Sign



It Means
Safety and
Satisfaction

Radio Legislation Now in Sight Entire Comedy Broadcast

Latest advices from Washington give every assurance of the passage of a radio law in the very near future. The bill as it will be presented to Congress provides for five Commissioners, who will have complete power to assign wave lengths, power and time of operation. The country will be divided into five districts, from each of which one of the Commissioners will be named.

The President will be given power to name the Commission, which will serve for one year at a salary of \$10,000. At the expiration of the year the duties of the Commission will be taken over by the Secretary of Commerce.

The Pacific Coast will be included in a district which will cover all States west of the Rocky Mountains. We sincerely hope that Colonel Dillon, who has been the Federal Radio Inspector for the Sixth District for several years and who has given all a square deal, will be named by President Coolidge as the representative from this district. No one is better qualified to fill the position. He knows radio, is fearless, honest, and knows conditions better than anyone else in this territory.

A Correction

In the Western Radio advertisement on the Farrand "B" Eliminator, page 49, Radio Doings of January 29th, the power rating of the Farrand was incorrectly stated as 75 milliamps at 150 volts. This should have been 65 milliamps at 200 volts, with a capacity for handling from 1 to 12 tubes, including the use of power tubes.

"Applesauce," the comedy now playing at Egan's Theater, Los Angeles, was broadcast in its entirety from the studio of KFI, Thursday evening, January 27th. This is the second time that an entire performance has been broadcast over radio on the Pacific Coast.



NEELY EDWARDS

The first instance was that delightful comedy, "White Collars." This company is headed by Neely Edwards, the well known film comedian, who is ably supported by Rea Martin, Ross Forrester, Zellah Covington, Blanche Douglas, Hugh Metcalf and Beulah Monroe, with Lee Parvin as manager. KFI, as well as the "Applesauce" company, has received scores of congratulatory messages on this broadcast and each should be complimented on the wonderful manner in which it was put on over the air.

Radiograms

By CLOYD MARSHALL, JR.

Justice

We notice that the government has tied up another half million of the Charley Chaplin estate, which, with other legal entanglements, needlessly throws the members of a large organization out of employment. An estate such as this can't run away. If the Government, State and County officials would spend more time in apprehending and convicting murderers, the people of the United States would be able to live more happily and with more safety. Legal loopholes and the abominable parole system allow vicious criminals their freedom and sufficient disregard for law to continue their depredations on society. A tragic example of this flared up last week in the cold-blooded murder of Officer F. A. Bennett of the Los Angeles police force.

Lawyers' Week

Thank goodness, thrift week, swat-the-fly week, eat-more-cream-cheese week and such freaks are going out of vogue.

We'll give it a merry s'long with a lawyer week. It will be just as important as any other week. Excepting the honest and conscientious attorneys, we broadcast our compliments to the profession for the maze of smelly court brawls, release of dangerous criminals and crooked political court scraps in which public funds are wastefully dissipated.

By the People

Abraham Lincoln, in his immortal Gettysburg speech, said, in part: "A Government of the people, by the people and for the people." Although he was a lawyer, if he were living at this day and age he would have to change his speech to read, "A Government of the lawyers, by the lawyers and for the lawyers." The majority of our State and National legislators are attorneys, so it is naturally the legal profession which makes and interprets the laws. It is getting so we have to live, do business and love with a lawyer at our elbow to protect us from the laws that he makes. We notice they always fix things so there is plenty of work for their calling.

POLYMET CONDENSERS

Stand the Gaff!



Condensers are the watchdogs—guardians of the receiver or power unit you construct. Assure success by choosing only condensers that stand the gaff.

Extensive research and latest, most modern equipment and skill enable Polymet to build condensers of exceptionally high voltage breakdown test. Only the finest materials are employed. An improved process renders them non-inductive with high dielectric resistance for long life and durability.

Raytheon Circuit Condensers

Approved by the Raytheon Company with high rating

Type F-1000—14Mfd.
Tapped at 1, 1, 2, 2, 3,
\$9.50

Type F-1001—.1-C-1
Mfd. \$2.00

High Voltage Condensers

The right size for every use

.1 to 5. Mfds.
60c to \$4.50

Fixed Mica Condensers

Plates and lugs in one piece. Capacities guaranteed.
All sizes 25c to \$1.00
Write for complete details and illustrated descriptions of all Polymet Products. Sent free on request.

Polymet Manufacturing Corporation
599F Broadway New York City

Pacific Coast Representatives
THE SPECTOR COMPANY
Rialto Building, San Francisco, Calif.

"World's Largest Manufacturers of Radio Essentials"

POLYMET PRODUCTS



ONE OF THE FAIR SEX

Oxnard, Calif., Jan. 9th., 1927.

DX Club:

I always read with much interest, letters from DX fans, and although I haven't seen any letters from women DX fans, wish to tell the rest of the fans that I use a Super-Zenith, six tubes, and have a very fine log. Will not repeat call letters of stations, but might state that I have had Lima, Peru; Buenos Aires; Japan; Australia; fifteen stations in Chicago; several in Canada, etc. My best records, I believe are KDKA and WJZ on the loud speaker like locals, at 4:00 P. M.

I might also state that I live within a very few blocks of the worst "rock crusher" type of compass station on the Pacific Coast. The code interference is terrific. My advice to W. L. Reynolds, Lennox, Calif., is to listen right through the noise until your ears become calloused. I know it can be done.

The main point I would like to tell about is the fact that I am using "B" battery elimination, and have my ground connection connected to the aerial post and used as an aerial, and use no ground on the set whatsoever. This increases my volume to at least three times as great as when using the usual ground and aerial. Have made a very good ground and am not using an ordinary ground.

Thanks to "Radio Doings" for the space allotted to the DX fans.

MRS. CARL NEWCOMB.

ATTENTION, KAY!

San Diego, Calif., Jan. 2, 1927.

Editor of DX Club:

In reading Kay Brewster's letter in the edition of Jan. 2 to 8, I wish to say that I am also an owner of a Radiola 20, which I operate on a Philco "A" battery, 3 45-volt Ray-O-Vac "B" batteries and an Eveready "C" battery (4½-volt).

Though I have as yet not received any station outside of the United States, excepting CNRV, CNRC, CFDC and AMB, I feel very proud of the number of stations which I have received.

I have only had the set two weeks and sure think it is swell.

If Kay Brewer or any other Radiola 20 owner would want to get a few stations that I have and that they have not got as yet, I would like to hear from them and I will tell them just about where to bring them.

ED. BREITBAND,
3219 33rd Street.

A NEW MEMBER

Long Beach, Calif.

DX Club:

Have been reading your DX Club section in the little red book and find it very entertaining. Not only do I enjoy of reading the logs, but have found quite a few pointers. Thanks!

I have a Crosley 5-50 with a power tube and W. E. cone. My antenna is a wire to one side of the electric light line with a condenser of .0001 and my ground is a wire hooked up to the dial on the telephone. Not so as it sounds either. Here's my log in a weeks time:

KSL, KOWW, KPO, KGO, KFBC, KYA KTAB, KOA, KPSN, KLX, KGW, KOIN, KOMO, CNRV, KJR, KFOA, KHK, CFCT, KFSD, KFRC, KZM, KFWM, KFWH, KFWI, KFAU, AMB, KMOX, KDKA, KYW, W9BH, WFAA, WHT, WJAZ, WOR, WOW. Also all the locals.

Yours sincerely,

W. BAXTER.

P. S.—Also JOAK, but it has not been verified yet.

If you have misplaced the funnel, an easy way to fill a storage battery with water is to place a screw driver directly in line with the cell openings and to pour the water slowly down the shank. The liquid is thus guided into the battery without spilling, says Science and Invention Magazine. Do not on any account attempt this same trick with acid, as the latter will attack the tool and contaminate the battery solution.



Eventually

You will want
a better Radio

Stromberg-
Carlson

Is the ultimate
in
Radio Performance

*Undistorted reproduction over seven octaves
of the musical scale--when the average
receiver reproduces only 3½
octaves--is one reason for
Stromberg - Carlson
pre-eminence
in Radio*

STROMBERG-CARLSON RADIO STUDIO

"A Perfect Setting for a Perfect Set"

3831 Wilshire Blvd.
Phone
WashingtOn 4095

Open Evenings

THE TROUBLE SHOOTER



ask Van Why
By FORBES W. VAN WHY
A. I. E. E., A. I. R. E.
Technical Editor Radio Doings



QUESTION—W. H. Young, Santa Barbara, Calif.: I have a Grebe MU 2 dry cell receiver and would like to convert it to a 6-volt tube set. Shall I change the rheostat? Also please tell me whether it is more economical to buy a small capacity battery and use a trickle charger or a large capacity battery, charging it at required intervals.

ANSWER—A rheostat of the same resistance will suffice, since with the addition of larger tubes, the "A" voltage will naturally be increased in order to secure proper results. However, due to the addition of tubes which draw more current, you should install a rheostat which will have a greater current-carrying capacity, corresponding to the increase in current due to the 6-volt tubes.

Suggest a larger battery in preference to a small one with trickle charger. While the initial cost is more, the life of the battery will be longer and the general cost of operation over a period much less than with a small battery and trickle charger. Last, but not least, as long as you desire to operate several 6-volt tubes, you will have sufficient reserve in a larger battery to enable you to listen over longer periods of time, which is handy when special events are "on the air."

Too many folks blame the transmitting stations for certain things which occur. Although not always, most trouble lies at the receiving end and one reason is that the transmission of music and voice has progressed a little in advance of the reception.

QUESTION—Mrs. Cora Hentz, Los Angeles, Calif.: I have an 8-tube Victoreen super, which goes dead on certain dial settings. Sometimes most all dial settings are dead except on local strong stations. Occasionally, if I start to tune

on a very high dial setting, it works all right, and then dies down. Sometimes turning off the set will help. I tried a new oscillator tube, but of no avail. Changed all tubes. Changed loop direction. Would shielding the intermediate transformer help me?

ANSWER—Inasmuch as I hardly believe that at certain dial settings your condensers "go open" by virtue of the position of the pig tail connections, you might investigate this phase if all else fails.

The general symptoms point to defective or dead "B" batteries. I therefore suggest a complete check of same. From your letter, it is apparent that your "A" battery is O. K. Shielding the intermediate transformer will have absolutely no bearing on the case at all. Don't forget to check the condenser connections on the dead spots. Be sure "B" battery terminals make perfect contact.

Persons using lamp socket antenna adapters complain in many instances of lack of selectivity. It is a long story, but to be brief and frank, the lamp socket attachments are a boon to certain radio fans, but they do not allow maximum selectivity in most cases due to the nature of wiring in most houses. Secondly, they are O. K., where it is impossible to erect an antenna, but can never duplicate an outside antenna.

QUESTION—L. P. Brown, San Diego, Calif.: I have a B. T. Counterphase, six tubes, but have taken out the second stage of AF, as there is plenty of volume without it. I want to replace it with one stage of resistance coupled amplification. Why is it that in Radio Doings, station AMB is given as being on 324 meters, yet on my set it always comes in on the same setting as KTAB, 303 meters? Why don't stations have

Trouble Shooter—Cont.

announcers who know something about foreign languages? The way they pronounce foreign names is atrocious.

ANSWER—Suggest you reinstall the original second audio stage in your receiver. Since you obtain plenty of volume, do not suggest addition of several stages as per your letter. Am positive that your receiver will function at its maximum efficiency if placed in original condition, since the circuit was worked out by experienced engineers. If you wish to deviate from your present circuit, suggest you dispose of your set and build up a circuit along the lines mentioned in your communication, rather than attempt to make radical changes within such a good receiver as you now possess, thereby mutilating same, more or less. Station AMB is listed as operating on 324 meters. They may have shifted of their own free will, or have been assigned a new frequency since our information was received. However, with the radio situation as it now stands, you may expect many, many stations to be well off the listed frequency. Our information is received direct from the stations involved, and any changes made are not under our control. Your last query may be asked in two ways: That several and most first class stations have well educated announcers, and that most of us are English-speaking people. I wonder if the European announcers enunciate some of our proper names the way we would like them to?

Storage batteries will last longer if placed on charge when the specific gravity drops to a low level. This level varies with certain types of storage cells, hence we do not mention a definite reading. The point to remember is that the storage type of battery should not be left in service until it is absolutely "dead" and refuses to function at all. Have it charged before the "dead" point is reached. You will more than save the cost of the few additional charges.

There is not mystery about the lamp socket attachment for antennas. It is merely a means of coupling by means of capacity to your light wires in your home. A small fixed capacity of somewhere near proper capacity, which is applicable to the average type of house wiring.

TRADE IN YOUR OLD BATTERY

for a

PHILCO
Socket Power
'A' — 'B'

*Absolutely
No Hum!
No Distortion!*

Call Atlantic 0584

For Free Demonstration
Or Mail Coupon Today

J. M. Andrews Radio

209 W. 18th St.

Los Angeles

SPECIAL OFFER COUPON

Gentlemen:

Please send me WITHOUT COST and WITHOUT OBLIGATION complete illustrated literature describing the PHILCO A and B Socket Powers. I also desire the full details of your easy payment plan and trade-in allowance.

Name.....

Address.....

Make or Radio Set.....



By CAREY PRESTON RITTMEISTER

In celebrating Abraham Lincoln's birthday, we never associate the event with the period of his birth, but rather with the Civil War period—quite the natural thing to do.

Had I the space, it would be most interesting to go into the things in which women were interested throughout the different periods of Lincoln's life. I would tell you of a new pattern for a patch-work quilt, or of a place where one could purchase a device for making candles, that would save much labor in their formation. There would be suggestions of makeshifts for bed-warmers and ways for cleaning feather beds. The young housewife would be told how to sew a pocket in a skirt or a gusset in her young husband's shirt.

There would be occasion for caustic comment on the breadth of the hoop-skirts being worn in one period, and much propaganda against the style of drawing the "stays" to such a degree of tightness as to endanger the health. There would undoubtedly be the same interest in recipes for mince pies, with none of the present day worry as to a substitute for the "kick." A description of the "wicked" waltz, lately introduced from Germany, would be readable and very much the subject of conversation.

The words "rouge" and "powder" as toilet accessories would be almost unknown to the world of women who would have been interested in the Woman's Page of any "Doings" in Lincoln's day, but I would be giving advice to the young woman to arise early and bathe her face in the dew before

sun-up; or, did she desire much color in her cheeks, to keep always in the bottom of the water pitcher, resting on the wash stand in her room, a handful of iron nails.

"Soft soap" had no double meaning in those days, and the method of making such soap, using the wood ashes taken from the kitchen range daily would be described.

The shadows of the tragedy of Lincoln's latter years were relieved by the high lights of his humor—a rich humor which is ever uppermost in our conception of him.

In my childhood home we had many reminders of those days; my father had returned from the war a captain, and though many years had passed since its end, it was quite the happiest days when he would line up my brothers, sisters and myself and put us through the "manual of arms." An uncle—a young lad who was among the missing after Shiloh, and from whom no word was ever heard again, had sent many letters full of interest, although the postage rates were so high that soldiers whose pay was many months overdue, were unable to purchase the stamps required to send their letters home..

Reflecting the same kindly humor in the face of tragedy which marked the character of Abraham Lincoln, is one treasured letter from this boy to my grandmother, his mother, on the envelope of which there was no stamp, but this verse:

"A soldier's letter, nary a red;
Hard tack in the place of bread.
Please, postmaster, shove this through
And when I'm paid I'll then pay you."



The Original

Nathaniel Baldwin CONSOLE GRAND REPRODUCER



This reproducer, employing the new scientific long air column principle, for true reproduction of the full tone range, is the latest development of the combined laboratory efforts of the Nathaniel Baldwin Co. of Salt Lake City and Newcomb-Hawley Co. of Chicago.

It is said by musical critics to be the best they have ever heard..

Baldwin Dealers will find their prestige increased still further by the addition of this wonderful speaker to their present Baldwin stock.

Deliveries can now be obtained through regular jobbers and dealers.

Southern California Distributors:

MYERS ELECTRIC CO.
1727 S. Los Angeles St.
Los Angeles, Calif.
Westmore 5411

DANIEL SPECIALTY CO.
5234 Melrose Avenue
Los Angeles, Calif.
HEmpstead 3491

Pacific Coast Representatives:

KEELER WHITE CO.

LOS ANGELES SAN FRANCISCO SEATTLE
211 S. San Pedro 509 Mission 409 Occidental



Radio Topics of the Day

A Weekly Review of Radio News, Thought and Opinion

RADIO VALUABLE ASSET TO RAILWAY

The radio has been definitely proven to be a valuable asset in railroading, Sir Heary Thornton, president of the Canadian National Railways, declared in an air address which marked the fourth anniversary of the establishment of its first broadcasting station by Canada's big national railway. The Canadian National was the pioneer railway in America to adopt the radio as a part of its service and the result of what four years ago was regarded as an experiment has been watched with interest by executives of other railways. Several big American systems have since entered the radio field.

The Canadian National radio system has grown from a single station in Montreal to a chain of ten stations, stretching across Canada, from Atlantic to Pacific, within four years. In addition to its broadcasting service, the road makes a feature of radio reception on its trains, some fifty Canadian National trains now being equipped with receiving sets in the library-observation cars.

HEADED THIS WAY

The taking over of the management of Station KFKX, Hastings, Neb., is reported to be but another step in the realization of the National Broadcasting Company's plan to extend its chain to the Pacific Coast. Having made a definite extension of its southern stations, it is understood the company not only intends to cover this field more inten-

sively but soon to broaden out to the southwest and west and ultimately span the entire United States.

RADIO AFFECTED BY TEMPERATURE

That temperature influences the strength of radio signals is the conclusion reached by Dr. L. W. Austin and Miss Wymore of the Bureau of Standards, Department of Commerce, Washington, D. C. This work is part of the program of the International Union of Scientific Radio Telegraphy which was adopted at Brussels in 1922, and is now being carried on in the various countries comprising the Union.

Two years ago Dr. Austin described a decided increase in the signals received at Washington from trans-oceanic stations during the passage of severe "cold waves" over the eastern United States, according to Radio News Magazine. Further study now indicates that whenever the temperature rises along the signal path there is a tendency for the signal strength to drop; conversely, a falling temperature tends to produce a stronger signal, though these temperature effects are often masked by other unknown influences.

UNCLE SAM'S NEW ORCHESTRA

A new orchestra comprised of members of the Army and Navy bands, under the direction of Captain William Stannard, will soon start broadcasting a series of concerts over Station NAA, located at the Washington Navy Yard.

Radio Topics of the Day

A Weekly Review of Radio News, Thought and Opinion

RADIO IN 25 YEARS

It is just twenty-five years since Marconi sent the historic SOS period. Radio from the crudest kind of apparatus came through the stages as a plaything for the boys, used solely for code messages from ships, then to commercial use, then to crude broadcasting, then to a place where voice and music are received almost perfectly, and today we are using it to carry on telephone conversation between Europe and the United States.

The radio engineers are experimenting with television, transmission of moving pictures and of heat, light and power. Our imagination is not great enough to conceive the possibilities of Radio in the next twenty-five years.

STATION PWX OFFERS TRIP TO HAVANA

An unusual contest has been begun by Station PWX, at Havana, Cuba, whereby the winner will be given a free trip to Cuba and back home, with one week's stay in Havana, as a guest of the Cuban National Tourist Commission. Anybody in the United States or Canada is eligible, and chaperone expenses are included, if needed. Station PWX states that all any radio fan has to do is to sit by his fireside, listen in, and report each reception. The contest closes February 24th and the sailing date from New Orleans, New York or Boston has been set for March 12th.

There is no law regulating libel in radio today.

AMATEUR SETS LONG DISTANCE RECORD

What is considered to be a new record for long distance radio communication between amateurs, was established last week, when R. C. McLean, of Winnipeg, who is a radio operator in the Radio Department of the Canadian National Railways, engaged in the train service, held conversations with two amateur stations in Australia, 7BQ and 2MH. Mr. McLean, whose call is 4FZ, operates a 7½-watt transmitter, series-colpitt circuit, with a wave-length of 39 meters. He first picked up 2MH at about 3 a. m., January 12th, and talked with the Australian station for about an hour, during which time he accepted a message for delivery to a party in Montebello, Alabama. At about 5:30 a. m., Mr. McLean was successful in connecting up with station 7BQ, and was in communication with it with much more volume than the previous station.

AN ICY REPLY

Recently a radio manufacturing company has been urging William Allen White to sit beside a radio and pose for a picture. In return for this favor, the company proposed to present the author a radio. Mr. White declined. After several exchanges of letters, the matter progressed to an exchange of telegrams. The company wired in substance: "Consider the pleasure you would derive from hearing President Coolidge's voice in your home—" and Mr. White wired in reply: "Don't need it. Have a Frigidaire."—El Dorado Times.

Broadcast Changes

EIGHT NEW STATIONS

Call	Owner	Wave Length Meters	Frequency Kcys.	Power Watts
WMBL	Benford Radio Studios, Lakeland, Florida..	410	731.3	10
KGEW	City of Fort Morgan, Fort Morgan, Colo....	256	1171	10
KGEU	L. W. Clement, Lower Lake, Calif.....	222	1351	50
KGEY	J. W. Dietz, Denver, Colo.....	204	1470	15
KMIC	J. R. Fouch, Inglewood, Calif.....	387	774.7	500
KGRC	Gene Roth & Co., San Antonio, Texas.....	315	951.8	50
KPCB	Pacific Coast Biscuit Co., Seattle, Wash....	521	575.5	50
WJPW	J. P. Wilson, Ashtabula, Ohio.....	239.9	1250	15

CHANGES

WEHS, A. T. Becker, Evanston, Ill., name changed from Oliver G. Fordham, kilocycles, to 241.8 meters, 1240 kilocycles; power changed from 10 watts to 100 watts.

WCBS, Harold L. Dewing & Charles H. Messter, Portable (Province, R. I.), changed from 242 meters, 1239 kilocycles, to 242.5 meters, 1237 kilocycles.

More Broadcasters Expected

Among the stations listed as contemplating entering the broadcast game are the following: Nichols Mfg. Company, Nutley, N. J.; William J. Tracey, Paterson, N. J.; Texas Technological College, Lubbock, Texas; T. L. Kidd, San Antonio, Texas; L. O. Shopshire, Plainview, Texas; The Corbell Radio Co., Duncan, Okla.; A. J. Bates, Cedar Grove, La.; Logan Cash, Logan, Ohio; C. R. Cummins, Erie, Pa.; Edwin J. Fitzpatrick, Oswego, N. Y.; Loveless & Hamilton, Bath, N. Y.; Radio Service Laboratories, Auburn, N. Y.; S. C. Spring, Ticonderoga, N. Y.; Robert Wingood, Syracuse, N. Y.; Wm. Rollins, Central Station Boddridge Co., West Virginia; Lamb & Love Electric Co., Huntington, West Virginia; F. B. Smith, Huntington, West Virginia; S. W. Townsend, Akron, Ohio; Paul E. Bays, Arkansas City, Kansas; P. E. Vurnutt, Garnett, Kansas; G. F. Gould, Concordia, Kansas; Bush's Poultry Farms, Clinton, Iowa; R. P. Murphy, Sioux City, Iowa; G. N. Bragg, Blue Springs, Neb.; B. R. Joachin, Scottsbluff, Neb.; J. A. MacLean, Cozad, Neb.; Ven Electric Service, Elk Point, S. D.; Ray Scott of

Memphis, Tenn.; Jackson, Miss.; Prest and Dean Radio Co., Long Beach, Calif.; John Ellis, Long Beach, Calif.; Public Library of Los Angeles, Los Angeles, Calif.; Marsden Electric Co., Van Nuys, Calif.; Ralph W. Flygare, Ogden, Utah; Frederick Robinson, La Crescenta, Calif.; Norman Maw Music Co., San Diego, Calif.; Utah Radio Products Co., Salt Lake City, Utah; L. E. Schwamm, Douglas, Arizona.

Another Station for Los Angeles

A new station is being constructed on the Commercial Exchange Building, Eighth and Olive Streets, Los Angeles, by the Pacific Development Co. We understand they are using the equipment previously used by the station at Big Bear. The panels are being made by Twining-Scott, 1125 Wall Street. They expect to be assigned a wave length of 353 meters.

Mary (on a crowded trolley car)—
"What have you in that package, Sadie?"

Sadie—"A portable radio set."

Mary—"Gee, if you can tune in the 'Star Spangled Banner' maybe we can get a seat."

SUNDAY TIME TABLE

ALL TIME TABLES ADJUSTED
TO PACIFIC TIME
(X) Indicates Station is On the Air

10-12 A.M.	12-2 P.M.	2-4 P.M.	4-6 P.M.	STATIONS			6-8 P.M.	8-10 P.M.	10-12 P.M.																							
10.00-10.30	10.30-11.00	11.00-11.30	11.30-12.00	12.00-12.30	1.00-1.30	1.30-2.00	2.00-2.30	2.30-3.00	3.00-3.30	3.30-4.00	4.00-4.30	4.30-5.00	5.00-5.30	5.30-6.00	CALL	Wave Length Meters	Power in Watts	STATION	6.00-6.30	6.30-7.00	7.00-7.30	7.30-8.00	8.00-8.30	8.30-9.00	9.00-9.30	9.30-10.00	10.00-10.30	10.30-11.00	11.00-11.30	11.30-12.00		
SOUTHERN CALIFORNIA																																
	X	X	X												KG E F	517	1000	Los Angeles					X	X	X							
X	X	X	X					X	X						K F I	467	4000	Los Angeles	X	X	X	X	X	X	X	X	X	X	X	X	X	X
		X	X												K F C R	413	500	Santa Barbara						X	X							
X	X	X	X												K H J	405	500	Los Angeles					X	X	X	X	X	X	X	X	X	X
	X	X													K M I C	387	500	Inglewood					X	X	X	X						
															K F B C	380	50	San Diego					X									
															X K M T R	370	500	Hollywood	X	X	X	X	X	X	X	X	X	X	X	X	X	X
X	X	X	X			X	X	X	X	X	X				K N X	337	750	Los Angeles					X	X	X	X	X	X	X	X	X	X
X	X	X	X												K P S N	316	1000	Pasadena					X	X								
X	X	X	X												K F W C	295	200	San Bernardino								X	X	X	X	X	X	
X	X	X	X												K T B I	294	750	Los Angeles	X	X	X	X	X	X	X	X	X	X	X	X	X	X
X	X	X	X					X	X	X	X				K F S G	275	500	Los Angeles					X	X	X	X	X	X	X	X	X	X
															K F W B	252	500	Hollywood							X	X	X	X	X	X	X	X
								X	X						K F S D	246	1000	San Diego	X	X	X	X	X	X	X	X	X	X	X	X	X	X
X	X	X	X			X	X								X K N R C	238	1000	Santa Monica	X	X	X	X	X	X	X	X	X	X	X	X	X	X
	X	X	X			X	X	X	X	X	X	X	X	X	K F O N	233	750	Long Beach	X	X	X	X	X	X	X	X	X	X	X	X	X	X
X	X	X	X												K P P C	229	50	Pasadena					X	X	X							
															K F Q Z	226	500	Hollywood	X	X	X	X	X	X	X	X	X	X	X	X	X	X
						X	X								X K F W O	211	250	Catalina	X	X	X	X	X	X	X	X	X	X	X	X	X	X
															K F V D	205	500	Venice										X	X	X	X	X
NORTHERN CALIFORNIA																																
X	X					X	X	X	X						K P O	428	1000	San Francisco	X	X	X	X	X	X	X	X	X	X	X	X	X	X
	X	X													K Y A	400	1000	San Francisco					X	X	X							
	X	X	X			X	X	X							K G O	361	4000	Oakland					X	X	X	X	X	X	X	X	X	X
X	X	X	X												K Q W	333	500	San Jose					X	X	X	X						
X	X	X	X												K T A B	303	1000	Oakland					X	X	X							
															X K F R C	268	50	San Francisco	X	X	X	X	X	X								
	X	X													K F U S	258	50	Oakland					X	X	X							
X	X														K R E	256	100	Berkeley														
						X	X								K F W I	250	500	San Francisco					X	X	X	X	X	X	X	X	X	X
						X	X	X	X	X					K G T T	207	50	San Francisco					X	X	X							
NORTHERN AND WESTERN STATES																																
X	X	X	X					X	X	X	X				K G W	491	1000	Portland					X	X	X	X	X	X	X	X	X	X
X	X	X													C F A C	435	2000	Calgary														
	X	X	X												K J R	384	20M	Seattle					X	X	X	X	X	X	X	X	X	X
															K L Z	384	500	Denver					X	X	X							
X	X	X	X												X K O A	322	5000	Denver					X	X	X							
															K O I N	319	1000	Portland							X	X	X					
X	X	X	X	X	X										K O M O	306	1000	Seattle	X	X	X	X	X	X	X	X	X	X	X	X	X	X
X	X	X	X	X	X										K S L	300	1000	Salt Lake City					X	X	X	X	X	X	X	X	X	X
X	X	X													K M O	250	500	Tacoma	X	X			X	X	X	X						

Hours Shown as Submitted by These Stations. For DX Schedule see Page 46.

Authorized Dealer for Fada and Crosley Sets

Sales, Service and Exchange
Battery Charging, 50c—Tubes Rejuvenated Free

DAVIS RADIO CO.

Time Payments if Desired.
Open Evenings and Sundays

Westmore 6948
2817 S. Main St., Los Angeles

MONDAY TIME TABLE

ALL TIME TABLES ADJUSTED
TO PACIFIC TIME
(X) Indicates Station is On the Air

10-12 A.M.		12-2 P.M.		2-4 P.M.		4-6 P.M.		STATIONS				6-8 P.M.		8-10 P.M.		10-12 P.M.																									
10:00-10:30	10:30-11:00	11:00-11:30	11:30-12:00	12:00-12:30	12:30-1:00	1:00-1:30	1:30-2:00	2:00-2:30	2:30-3:00	3:00-3:30	3:30-4:00	4:00-4:30	4:30-5:00	5:00-5:30	5:30-6:00	CALL	Wave Length Meters	Power in Watts	STATION	6:00-6:30	6:30-7:00	7:00-7:30	7:30-8:00	8:00-8:30	8:30-9:00	9:00-9:30	9:30-10:00	10:00-10:30	10:30-11:00	11:00-11:30	11:30-12:00										
SOUTHERN CALIFORNIA																																									
X	X	X		X	X								X	K F I	467	4000	Los Angeles		X	X	X	X	X	X	X	X	X	X	X	X	X										
			X	X										K F C R	413	500	Santa Barbara						X	X																	
														K H J	405	500	Los Angeles																								
														X	K M I C	389	500	Ingleswood		X	X	X	X	X	X	X	X	X	X	X	X	X	X	X	X	X					
			X	X										K F B C	380	50	San Diego								X	X	X	X	X	X	X	X	X	X	X	X					
														X	K M T R	370	500	Hollywood		X	X	X	X	X	X	X	X	X	X	X	X	X	X	X	X	X	X				
X	X		X		X	X	X	X	X	X	X	X	X	X	K N X	337	750	Los Angeles		X	X	X	X	X	X	X	X	X	X	X	X	X	X	X	X	X	X				
			X											K P S N	316	1000	Pasadena		X	X				X	X	X	X	X	X	X	X	X	X	X	X	X					
														C Y H	311	1000	Monterey, Mex.		X	X	X	X	X	X	X	X	X	X	X	X	X	X	X	X	X	X	X				
			X	X	X	X	X	X	X	X	X	X	X	A M B	301	100	Tia Juana, Mex.																								
			X	X										X	K F W G	295	100	San Bernardino							X	X	X	X	X	X	X	X	X	X	X	X	X				
							X	X						K T B I	294	750	Los Angeles							X	X	X	X	X	X	X	X	X	X	X	X	X	X				
														K S M R	283	100	Santa Maria						X	X	X	X	X	X	X	X	X	X	X	X	X	X	X				
														K W T C	263	250	Santa Ana						X	X			X	X	X	X	X	X	X	X	X	X	X				
														X	K F W B	252	500	Hollywood		X	X	X	X	X	X	X	X	X	X	X	X	X	X	X	X	X	X	X			
														K F S D	246	1000	San Diego		X	X	X	X	X	X	X	X	X	X	X	X	X	X	X	X	X	X	X	X			
														X	K N R C	238	1000	Santa Monica		X	X	X	X	X	X	X	X	X	X	X	X	X	X	X	X	X	X	X			
X	X	X	X	X	X									X	K F O N	233	750	Long Beach		X	X	X	X	X	X	X	X	X	X	X	X	X	X	X	X	X	X	X			
			X	X										X	K F Q Z	226	500	Hollywood		X	X	X	X	X	X	X	X	X	X	X	X	X	X	X	X	X	X	X			
														X	K F Y F	214	25	Ornard, Cal		X																					
														K F V D	205	500	Venice								X	X	X	X	X	X	X	X	X	X	X	X	X				
NORTHERN CALIFORNIA																																									
														K F B K	535	100	Sacramento		X	X	X	X	X	X	X	X	X	X	X	X	X	X	X	X	X	X	X				
														K L X	508	500	Oakland						X	X	X	X	X	X	X	X	X	X	X	X	X	X	X	X			
X	X		X	X	X									X	K P O	428	1000	San Francisco		X	X	X	X	X	X	X	X	X	X	X	X	X	X	X	X	X	X	X			
			X	X	X									X	K Y A	400	1000	San Francisco			X	X			X	X	X	X	X	X	X	X	X	X	X	X	X	X			
			X	X	X									X	K G O	361	4000	Oakland		X	X	X																			
X														K Q W	333	500	San Jose		X	X	X	X	X	X	X	X	X	X	X	X	X	X	X	X	X	X	X	X			
														X	K T A B	303	1000	Oakland			X	X			X	X	X	X	X	X	X	X	X	X	X	X	X	X	X		
X	X	X	X	X	X	X	X							X	K F R C	268	50	San Francisco		X	X	X			X	X	X	X	X	X	X	X	X	X	X	X	X	X	X		
														X	K R E	258	100	Berkeley							X	X	X	X	X	X	X	X	X	X	X	X	X	X	X		
X	X													K F U S	256	50	Oakland																								
X	X		X											K F W H	254	100	Eureka									X	X	X	X	X	X	X	X	X	X	X	X	X	X		
							X	X						K F W I	250	500	San Francisco		X	X	X			X	X	X	X	X	X	X	X	X	X	X	X	X	X	X			
														K Z M	240	100	Oakland							X																	
														K M J	234	50	Fresno							X	X	X	X	X	X	X	X	X	X	X	X	X	X	X	X		
X	X	X												X	K J B S	220	5	San Francisco																							
														X	K G T T	207	50	San Francisco																							
NORTHERN AND WESTERN STATES																																									
X	X	X		X	X									K G W	481	1000	Portland		X	X	X	X	X	X	X	X	X	X	X	X	X	X	X	X	X	X	X	X			
														X	K F O A	454	1000	Seattle		X	X	X	X	X	X	X	X	X	X	X	X	X	X	X	X	X	X	X	X		
			X	X										C F A C	435	2000	Calgary									X	X	X	X	X	X	X	X	X	X	X	X	X	X		
														K F X F	422	1000	Denver							X	X	X	X	X	X	X	X	X	X	X	X	X	X	X	X	X	
														K H Q	394	1000	Spokane							X	X			X	X	X	X	X	X	X	X	X	X	X	X	X	
X	X	X												X	K J R	384	20M	Seattle		X							X	X	X	X	X	X	X	X	X	X	X	X	X	X	
														X	K L Z	384	500	Denver							X	X	X	X	X	X	X	X	X	X	X	X	X	X	X	X	
X	X	X	X	X	X	X	X	X	X	X	X	X	X	X	K O A	322	5000	Denver		X	X	X	X	X	X	X	X	X	X	X	X	X	X	X	X	X	X	X	X	X	
														X	K O I N	319	1000	Portland									X	X	X	X	X	X	X	X	X	X	X	X	X	X	
X	X	X	X	X	X	X	X	X	X	X	X	X	X	X	K O M O	306	1000	Seattle		X	X	X	X	X	X	X	X	X	X	X	X	X	X	X	X	X	X	X	X	X	X
														X	K I S L	300	1000	Salt Lake City		X	X	X	X	X	X	X	X	X	X	X	X	X	X	X	X	X	X	X	X	X	
														K O W W	285	500	Walla Walla								X	X	X	X	X	X	X	X	X	X	X	X	X	X	X	X	
														K O A C	280	500	Corvallis, Ore.							X	X	X	X	X	X	X	X	X	X	X	X	X	X	X	X	X	
														K F J R	263	50	Portland									X	X	X	X	X	X	X	X	X	X	X	X	X	X	X	
X	X													K M O	250	500	Tacoma								X	X	X	X	X	X	X	X	X	X	X	X	X	X	X		
														X	K F E C	248	50	Portland		X																					

Hours Shown as Submitted by These Stations. For DX Schedule see Page 46.

The World's Long Distance Championship

Won By Mr. R. Davies

USING

CeCo TUBES

In a letter to the factory of Dec. 20, 1926, Mr. Davies says:

"MY SUCCESS in winning the WORLD'S RADIO LOVING CUP in recognition of the longest vocal radio reception on record was MADE POSSIBLE BY YOUR TUBES. With my hook-up I was successful in tuning in 21 foreign stations in 7½ hours during International Test Week. It was impossible to receive even distant U. S. reception with various tubes of different manufacture at the time of test.

"Whereas, in my test for the World's Championship I received the following stations and tuned some of these in three or four times during test week, and I might add that weather conditions were very poor.

"Sydney, Australia (air line 9700 miles); Moscow, Soviet Republic; Brussels, Belgium; Rome, Italy; Munchen, Germany; Hamburg, Germany; Madrid, Spain; Lima, Peru; Liverpool, England; Bournemouth, England. London, England; Aberdeen, Scotland; Vancouver, B. C.

"It is readily understood why I have become so enthusiastic over your product, for without it my success, which has meant so much to me, would have been a very difficult task. A manufacturer turning out so meritorious a product is deserving of all the 'boost' the radio industry can give, for your CeCo tubes really fulfill your motto, 'MAKE A GOOD RECEIVER BETTER.'"

In your own interest Demand CeCo Tubes. Endorsed and specified by the leading Radio authorities in the United States.

If your dealer has not got them he can get them for you through authorized local jobbers.

Dealers, get your franchise on the finest Radio line now on the market.

C. E. Manufacturing Co., Providence, R. I.

Pacific Coast Representatives

B. KRUGER & CO.

500 North Huntley Drive, West Hollywood, Calif.

(Sherman P. O.)

Tel. OX. 3897

Read This Letter

*Walker Radio Manufacturing Company,
5835 South Vermont Avenue,
Los Angeles, California.*

Dear Sir:

*About a month ago I had you go over my **Infradyne** set for me and I know you are anxious to know just what results I have been getting with it since then. The squealing and howling are entirely gone and the oscillator dial settings are as they should be.*

*For distance, selectivity and volume the **Infradyne** beats all of these requirements. I have been playing all kinds of distance with loud speaker volume, and I have received so many stations that I won't take up space to list them. If anybody wants to buy a real Radio they should certainly decide on the **Infradyne**.*

*Yours truly,
(Signed) E. H. MANN,
Pasadena, Calif.*

If results like this are what you demand, I can satisfy your utmost requirements with an Infradyne.

Walker Radio Mfg. Co.

5835 S. Vermont Ave.

Los Angeles, Calif.

Economy**Reliability**

WESTINGHOUSE

Radio "A" Autopower SAVES "A" BATTERY EXPENSE

Something new in radio. Works on any set. Plugs into a light socket. Gives full, continuous, even flowing "A" power at less than the cost of operating a light bulb.

"A" battery and charger in one combined unit. Permanently enclosed and practically indestructible. Developed and built by Westinghouse.

Comes ready for hook-up. No special wiring. No replacements. No bulbs. No liquid in charger. Gives clear-as-a-bell reception every night all year for many years.

Don't be without this remarkable new aid to complete radio enjoyment for another night.

Ask Your Dealer for Demonstration

Southern California Distributors

Harry W. Harrison, Inc.

848 South Flower St.

Phone TRinity 9777

ALSO

ILLINOIS ELECTRIC CO.

SHERMAN, CLAY & CO.

315 S. San Pedro St.

944 Santee St.

LOS ANGELES, CALIFORNIA



Rear view above shows large compartment with ample space for batteries, battery charger, or battery eliminator, which are entirely concealed from view. Back is open for ventilation of batteries.



(Pat. Applied For)
**Model 200, with 22-inch
 Cone Loudspeaker**



Above is shown the Cone Loudspeaker, with its Panel, which is quickly and easily removable, allowing access to all batteries, battery charger, battery eliminator, or other equipment and wiring.

Model 200

\$35

**Console with Cone
 Loudspeaker
 Ready for Set and
 Batteries**

This Windsor Cone Loudspeaker Console is equipped with a 22-inch Windsor Cone Loudspeaker. Its top is 30 in. x 17 in. and is 29 in. high. The battery shelf provides ample space for batteries, charger, battery eliminator and other equipment. Beautifully finished in either Mahogany or Walnut color.

A Revelation in Radio Reproduction



**Model 210
 22-inch Cone
 Loudspeaker
 with Panel and
 easel back**

\$18⁰⁰

(Pat. applied for)

beauty, just as it entered the microphone.

This 22-inch Windsor Cone Loudspeaker will reproduce the softest crooning lullaby in a softly lighted room, or the full throated march music of a band in an auditorium—both with perfect fidelity of sound and tone. The Windsor Cone Loudspeaker Console is the greatest value in the world of radio. When compared with the average cost of cone-type loudspeakers of even similar size, the cost of the complete Windsor—cone loudspeaker and console—is amazingly low.

The Windsor Cone and Horn Loudspeakers, combined with attractive pieces of furniture in many models, are being demonstrated by recognized dealers everywhere. Go to your dealer today and examine this astonishing new Cone Loudspeaker Console. If he happens not to have one, write to us and we will tell you the name of the nearest store at which you can see and hear one.

NOTE TO DEALERS

Write or wire today for details of the highly profitable Windsor selling line.

At last—a cone loudspeaker that reproduces *all* the tones as they are broadcast. From the deep voiced tuba of an orchestra to the softest note of a vocal solo—*every* tone—*every* sound is reproduced in all its

As a piece of furniture, the Windsor Cone Loudspeaker Console is of such manifest high quality and attractive design as to be a welcome addition to any home. Finished in Mahogany or Walnut color.

WINDSOR FURNITURE CO.

*World's Largest Manufacturers and Originators of
 Loudspeaker Consoles*

1420 Carroll Avenue, Chicago, Illinois

Los Angeles Branch: 917 Maple Avenue

H. D. 21

WINDSOR FURNITURE COMPANY,

Electrical Department,
 917 Maple Ave., Los Angeles.

Send me FREE and without obligation circulars of the Windsor line of Cone and Horn Loudspeakers combined with pieces of furniture, and name of nearest dealer.

Name.....
 Address.....
 Dealer's Name.....
 City.....State.....

FRIDAY TIME TABLE

ALL TIME TABLES ADJUSTED
TO PACIFIC TIME
(X) Indicates Station Is On the Air

10-12 A.M.	12-2 P.M.	2-4 P.M.	4-6 P.M.	STATIONS		6-8 P.M.	8-10 P.M.	10-12 P.M.																																
10 00-10 30	10 30-11 00	11 00-11 30	11 30-12 00	12 00-12 30	12 30-1 00	1 00-2 00	2 00-2 30	2 30-3 00	3 00-3 30	3 30-4 00	4 00-4 30	4 30-5 00	5 00-5 30	5 30-6 00	CALL	Wave Length Meters	Power In Watts	STATION	6 00-6 30	6 30 7 00-	7 00-7 30	7 30-8 00	8 00-8 30	8 30-9 00	9 00-10 00	10 00-10 30	10 30-11 00	11 00-11 30	11 30-12 00											
SOUTHERN CALIFORNIA																																								
X	X	X													X K G F	517	1000	Los Angeles	X	X	X	X	X																	
			X	X											X K F I	467	4000	Los Angeles	X	X	X	X	X																	
					X	X									X K F C R	413	500	Santa Barbara					X	X																
															X K H J	405	500	Los Angeles			X	X	X	X	X															
															X K M I C	387	500	Inglewood	X	X	X	X	X	X	X	X	X	X	X	X	X	X	X	X	X	X	X	X		
															X K F B C	380	50	San Diego						X	X	X	X													
															X K M T R	370	500	Hollywood	X	X	X	X	X	X	X	X	X	X	X	X	X	X	X	X	X	X	X	X		
X															X K N X	337	750	Los Angeles	X	X	X	X	X	X	X	X	X	X	X	X	X	X	X	X	X	X	X	X		
															X K P S N	318	1000	Pasadena			X	X		X	X	X														
															X A M B	301	100	Tia Juana, Mex.			X	X	X	X	X	X														
															X K F W C	295	100	San Bernardino			X																			
															X K T B I	294	750	Los Angeles	X	X	X	X	X	X																
X	X	X	X												X K F S G	275	500	Los Angeles			X	X	X	X	X	X														
															X K F W B	252	500	Hollywood	X	X	X	X	X	X	X	X	X	X	X	X	X	X	X	X	X	X	X	X	X	
															X K F S D	246	1000	San Diego	X	X	X	X	X	X	X	X	X	X	X	X	X	X	X	X	X	X	X	X	X	
															X K N R C	238	1000	Santa Monica	X	X	X	X	X	X	X	X	X	X	X	X	X	X	X	X	X	X	X	X	X	
															X K F O N	233	750	Long Beach	X	X	X	X	X	X	X	X	X	X	X	X	X	X	X	X	X	X	X	X	X	
															X K F Q Z	226	500	Hollywood	X	X	X	X	X	X	X	X	X	X	X	X	X	X	X	X	X	X	X	X	X	
															X X K F W O	211	250	Catalina	X	X	X	X																		
															X K F V D	205	500	Venice																						
NORTHERN CALIFORNIA																																								
															X K L X	500	500	Oakland			X		X	X	X	X	X													
X															X K P O	428	1000	San Francisco	X	X	X	X	X	X	X	X	X	X	X	X	X	X	X	X	X	X	X	X	X	
															X K Y A	400	1000	San Francisco			X	X	X	X	X	X	X	X	X	X	X	X	X	X	X	X	X	X	X	
															X K G O	361	4000	Oakland	X	X	X		X	X	X	X														
X															X K Q W	333	500	San Jose	X	X	X	X																		
															X X K T A B	303	1000	Oakland			X		X	X	X	X	X	X	X	X	X	X	X	X	X	X	X	X	X	
															X K S M R	283	100	Santa Maria			X	X	X	X	X	X	X													
X	X	X	X	X	X	X									X K F R C	268	50	San Francisco	X	X	X		X	X	X	X	X	X	X	X	X	X	X	X	X	X	X	X	X	
X	X														X K F U S	256	50	Oakland			X		X	X	X	X														
															X K R E	256	100	Berkeley			X																			
X	X														X K F W H	254	100	Eureka			X		X	X	X															
															X K F W I	250	500	San Francisco	X	X	X	X	X	X	X	X														
															X K Z M	240	100	Oakland			X																			
															X K M J	234	50	Fresno			X	X	X	X																
X	X	X													X K J B S	220	5	San Francisco																						
															X K G T T	207	50	San Francisco																						
NORTHERN AND WESTERN STATES																																								
X	X	X													X K G W	491	1000	Portland	X	X	X	X	X	X	X	X	X	X	X	X	X	X	X	X	X	X	X	X		
															X K F O A	454	1000	Seattle			X	X	X	X	X	X	X	X	X	X	X	X	X	X	X	X	X	X	X	
															X C F A C	435	2000	Calgary	X	X																				
															X K F X F	422	1000	Denver			X	X	X	X	X	X	X	X	X	X	X	X	X	X	X	X	X	X	X	
															X K H Q	394	1000	Spokane	X	X	X	X																		
															X K L Z	394	500	Denver	X	X																				
X	X	X													X K J R	348	20M	Seattle	X																					
															X K O A	322	5000	Denver	X	X	X	X	X	X	X															
															X K O I N	319	1000	Portland																						
X	X	X	X	X	X	X	X	X	X	X	X	X	X	X	X K O M O	308	1000	Seattle	X	X	X	X	X	X	X	X	X	X	X	X	X	X	X	X	X	X	X	X	X	
															X K S L	300	1000	Salt Lake City	X	X	X	X	X	X	X															
															X C N R V	291	5000	Vancouver, B. C.			X	X	X	X	X	X	X													
															X K O W W	285	500	Walla Walla			X		X	X	X	X	X	X	X	X	X	X	X	X	X	X	X	X	X	
															X K O A C	280	500	Corvallis, Ore.			X	X	X	X	X															
X	X														X K M O	250	500	Tacoma	X	X	X	X																		
															X K F Q X	233	1000	Seattle																						

Hours Shown as Submitted by These Stations. For DX Schedule see Page 46.

Get YOUR

PHILCO

SOCKET POWER

from Western Auto Supply Co.

Easy Payments

"Western Auto" offers very convenient terms . . . you can get your Philco Socket Power by making just a small down payment, then pay the balance in easy monthly amounts.

Installed FREE

When you buy your Philco Socket Power from "Western Auto" we connect it to your set at no additional cost.

Liberal Allowance

We will make a liberal allowance for your old "A" storage battery on the purchase of your Philco Socket Power.



WESTERN AIR PATROL RADIOS

Unusual tone, volume, simplicity, selectivity and beauty in our 5 and 6 tube sets—at surprisingly low prices.



Easy as Turning On Your Lights!

No fuss! No recharging or replacing! One switch controls everything. Snap it on, and from your house current you get a strong, steady flow of A and B power. Snap it off, and your radio is silent.

GUARANTEED

In addition to the factory guarantee, "Western Auto" stands squarely behind every Philco Socket Power we sell.

Runs Any Radio

It makes no difference what kind of a set you have. Philco Socket Power will give you both A and B power from your electric light circuit, and can be plugged in on any light socket.

Improves Any Set

Philco Socket Power will supply perfect radio power without hum or distortion, that will improve the reception of any set, regardless of hook-up, circuit, or make.



-More than 150 Stores in the West-

Western Auto Supply Co.

Main Store - 1100 South Grand Ave. - LOS ANGELES



FOR RADIO SUPPLIES

that add to your radio enjoyment . . . All well known and absolutely guaranteed . . . Buy from "Western Auto."

SATURDAY TIME TABLE

ALL TIME TABLES ADJUSTED
TO PACIFIC TIME
(X) Indicates Station Is On the Air

10-12 A.M.		12-2 P.M.		2-4 P.M.		4-6 P.M.		STATIONS		6-8 P.M.		8-10 P.M.		10-12 P.M.																	
10-10:30	10:30-11:00	11:00-11:30	11:30-12:00	12:00-12:30	12:30-1:00	1:00-1:30	1:30-2:00	2:00-2:30	2:30-3:00	3:00-3:30	3:30-4:00	4:00-4:30	4:30-5:00	5:00-5:30	5:30-6:00	CALL	Wave Length Meters	Power in Watts	STATION	6:00-6:30	6:30-7:00	7:00-7:30	7:30-8:00	8:00-8:30	8:30-9:00	9:00-9:30	9:30-10:00	10:00-10:30	10:30-11:00	11:00-11:30	11:30-12:00
SOUTHERN CALIFORNIA																															
									X	K F I	487	4000	Los Angeles.....	X	X	X	X	X	X	X	X	X	X	X	X	X	X	X	X	X	
		X	X							K F C R	413	500	Santa Barbara.....				X	X	X												
										K H J	405	500	Los Angeles.....	X	X		X	X	X	X	X										
										X	K M I C	387	500	Inglwood.....	X	X	X	X	X	X	X	X	X	X	X	X	X	X	X	X	X
	X	X								K F B C	380	50	San Diego.....				X	X	X	X	X	X	X	X	X	X	X	X	X	X	X
X	X	X			X	X	X	X	X	X	X	X	X	X	X	X	X	X	X	X	X	X	X	X	X	X	X	X	X	X	X
X					X	X	X	X	X	X	X	X	X	X	X	X	X	X	X	X	X	X	X	X	X	X	X	X	X	X	X
		X								K P S N	316	1000	Pasadena.....	X	X		X	X	X												
		X	X	X	X	X	X	X	X	X	X	X	X	X	X	X	X	X	X	X	X	X	X	X	X	X	X	X	X	X	X
	X	X	X	X						X	A M B	301	100	Tia Juana, Mex.....																	
										K S M R	283	100	Santa Maria.....				X														
X	X	X	X						X	X	X	X	X	X	X	X	X	X	X	X	X	X	X	X	X	X	X	X	X	X	X
										K W T C	263	250	Santa Ana.....	X	X		X	X	X	X	X	X	X	X	X	X	X	X	X	X	X
			X	X						K F W B	252	500	Hollywood.....	X	X	X	X	X	X	X	X	X	X	X	X	X	X	X	X	X	X
										K F S D	246	1000	San Diego.....			X	X	X	X	X	X	X	X	X	X	X	X	X	X	X	X
							X	X	X	X	X	X	X	X	X	X	X	X	X	X	X	X	X	X	X	X	X	X	X	X	X
X	X	X	X		X	X	X	X	X	X	X	X	X	X	X	X	X	X	X	X	X	X	X	X	X	X	X	X	X	X	X
		X	X							K F Q Z	226	500	Hollywood.....	X	X	X	X	X	X	X	X	X	X	X	X	X	X	X	X	X	X
										X	K F Y F	214	25	Oxnard, Calif.....	X																
		X	X						X	X	X	X	X	X	X	X	X	X	X	X	X	X	X	X	X	X	X	X	X	X	X
									X	X	X	X	X	X	X	X	X	X	X	X	X	X	X	X	X	X	X	X	X	X	X
NORTHERN CALIFORNIA																															
										K F B K	535	100	Sacramento.....			X	X	X	X	X	X	X	X	X	X	X	X	X	X	X	
										K L X	508	500	Oakland.....				X														
X		X	X	X				X	X	X	X	X	X	X	X	X	X	X	X	X	X	X	X	X	X	X	X	X	X	X	X
			X	X	X					K Y A	400	1000	San Francisco.....	X	X		X	X	X	X	X	X	X	X	X	X	X	X	X	X	X
	X	X	X							K G O	381	4000	Oakland.....				X	X	X	X	X	X	X	X	X	X	X	X	X	X	X
X										K Q W	333	500	San Jose.....	X	X																
										K T A B	303	1000	Oakland.....				X														
	X	X	X	X				X	X	X	X	X	X	X	X	X	X	X	X	X	X	X	X	X	X	X	X	X	X	X	X
	X								X	K R E	256	100	Berkeley.....	X	X	X	X	X	X	X	X	X	X	X	X	X	X	X	X	X	X
							X	X		K F U S	256	50	Oakland.....	X	X																
										K Z M	240	100	Oakland.....	X																	
										K M J	234	50	Fresno.....													X	X				
										K F Q U	231	250	Holy City, Cal.,				X	X													
X	X		X		X					K F W H	225	100	Eureka.....																		
X	X	X			X	X	X	X		K J B S	220	5	San Francisco.....																		
		X	X							K G T T	207	50	San Francisco																		
NORTHERN AND WESTERN STATES																															
X	X	X		X	X					K G W	491	1000	Portland.....	X	X	X	X	X	X	X	X	X	X	X	X	X	X	X	X	X	X
					X				X	K F O A	454	1000	Seattle.....	X	X	X	X	X	X	X	X	X	X	X	X	X	X	X	X	X	X
										K F X F	422	1000	Denver.....	X	X	X	X	X	X	X	X	X	X	X	X	X	X	X	X	X	X
										K C K C D	410	2000	Vancouver, B. C.....				X	X													
X					X	X				K H Q	394	1000	Spokane.....	X	X																
X	X	X							X	K J R	384	20M	Seattle.....	X										X	X	X	X	X	X	X	X
										K L Z	384	500	Denver.....			X	X	X													
	X	X	X	X						K O A	322	5000	Denver.....													X	X	X	X	X	X
							X	X		K O I N	319	1000	Portland.....																		
X	X	X	X	X	X	X	X	X	X	X	X	X	X	X	X	X	X	X	X	X	X	X	X	X	X	X	X	X	X	X	X
										K S L	300	1000	Salt Lake City.....	X	X	X	X	X	X	X	X	X	X	X	X	X	X	X	X	X	X
									X	X	X	X	X	X	X	X	X	X	X	X	X	X	X	X	X	X	X	X	X	X	X
X	X				X	X	X	X		K M O	250	500	Tacoma.....	X	X												X	X	X	X	X

Hours Shown as Submitted by These Stations. For DX Schedule see Page 46.

PHILCO

SOCKET POWER

Installed Free

\$5

DOWN

Puts One in Your Home for a
Lifetime of Service

*This switch
controls
everything*

- your A power
- your B power
- even the radio
set itself



PHILCO SALES & SERVICE Co.

1514 South Hope St. Phone WESTmore 9065

OTHER PRODUCTS WE HANDLE:

Philco Automotive Storage Batteries, CeCo Tubes, Ray-O-Vac Dry Batteries. Repair All Makes of Storage Batteries, Starters and Generators.

**MAIL THIS
COUPON
or Phone
WE. 9065**

for FREE DEMONSTRATION in your home. It places you under no obligation.

Name _____

Address _____

Phone _____

Make of Radio Set _____

13

Schedule of DX Stations

Call Letters	Location	W. L. Meters	Power Watts	Schedule of Concert and Dance Music
WBBM	Chicago	226	1500	Daily except Mon. and Fri., 6 to 10 p. m.
WIBO	Chicago, Ill.	226	1000	Mon., 4 to 6 p. m.; Fri., 10 to 12 p. m.
WOWO	Ft. Wayne, Ind.	227	1000	Wed., 5:15 to 10 p. m.
KUT	Austin, Texas	231	500	Mon., Wed., 6 p. m.; Sun., 9 a. m.-1:30 p. m.
WHT	Chicago	238-400	3500	Daily except Sun. and Mon., 8 to 10 p. m.
WWAE	Plainsfield, Ill.	242	5000	Daily except Sun., 7 to 10 p. m.
WOOD	Grand Rapids	242	1000	Fri. and Sat., 7 to 10 p. m.
WBAL	Baltimore	246	1000	Mon., Tues., Thurs., Fri., 5 to 9 p. m.
WRVA	Richmond, Va.	256	1000	5:30 to 8 p. m.
WKAF	Milwaukee, Wis.	261	5000	Mon., Wed., and Fri., 8 to 9 p. m.
WCAR	San Antonio, Texas	263	6000	Daily except Sun., 6 to 8 p. m.
WENR	Chicago, Ill.	266	1000	Daily except Sun. and Mon., 6 to 7 p. m.
WGHB	Clearwater, Fla.	266	500	Daily except Sun., 5:30 to 7 p. m.
WGHP	Detroit	270	1500	Wed., 5 to 7 p. m. Thurs. and Fri., 7-9 p. m.
KGU	Honolulu	270	500	Thurs., Fri., Sun., 10 to 11:30 p. m.
WHK	Cleveland, Ohio	273	1000	Daily except Sun., 3:30 to 4:30 p. m.
WORD	Chicago, Ill.	275	5000	Thurs. and Sat., 6 to 8 to p. m.
WGBU	Tulford, Fla.	278	500	Daily except Sun., 5 to 10 p. m.
KFAU	Boise, Idaho	280	750	Thurs., 8 to 10 p. m.
KMOX	St. Louis	290	1500	Daily except Sun., and Thurs., 1 to 9 p. m.
WSM	Nashville, Tenn.	292	1000	Mon., Wed., Sat., studio concert 8-10 p. m.
WMBF	Miami Beach, Fla.	284	5000	Daily, 4 to 5:30 p. m.; 7 to 11 p. m.
WAIU	Columbus, Ohio	294	750	Fri., 4 to 7 p. m. Mon., 6 to 8 p. m.
KPRC	Houston	297	500	Sat. and Wed., 8 to 10 p. m.
WPG	Atlantic City	300	500	Daily, 6 to 8 p. m.
WGN	Chicago	303	1000	Daily except Sun., 8 to 9 p. m.
WLIB	Chicago	303	4000	Daily except Sun., Mon., Wed., 9 to 11 p. m.
KOIL	Council Bluffs	306	500	Daily except Sun. and Wed., 4 to 9 p. m.
KDKA	Pittsburgh	309	1000	Daily ex. Sun. 3 to 8:30 p. m. Sun. 3 to 6 p. m.
WGR	Buffalo	319	750	Mon. and Fri., 6 to 10 p. m.
WKRC	Cincinnati	326	1000	Sun., Tues., Thurs., Sat., 8 to 10 p. m.
WSAI	Cincinnati, Ohio	326	5000	Tues., 3:30 to 8 p. m.; Sat., 5 to 8 p. m.
WJAZ	Chicago, Ill.	330	1500	Sun., 4 to 6 p. m.; Tues., Fri., Wed., 6-9 p. m.
WBZ	E. Springfield, Mass.	333	2000	Daily except Sun., 3:30 to 7:30 p. m.
KFAB	Lincoln, Neb.	341	1000	Mon., Tues. and Wed., 6:10 to 8:30 p. m.
WCBD	Zion, Ill.	345	5000	Tues., Thurs., 6 to 8:30 p. m.
WLS	Chicago	345	5000	Wed., Fri., Tues., 4 to 10 p. m.
WWJ	Detroit	353	1000	Daily except Sat. and Sun., 4 to 5 p. m.
CFCA	Toronto	356	2000	Wed., 8 to 9 p. m.
WHB	Kansas City	366	500	Sun., 8 to 11 p. m. Tues., 5 to 8 p. m.
WDAF	Kansas City	366	1000	Daily except Sunday., 9:30 to 11 p. m.
WJJD	Mooseheart, Ill.	370	1000	Daily except Sun., Mon., 6 to 7, 8 to 9 p. m.
KFBW	Laramie, Wyo.	375	500	Mon., Wed., Fri., 8 to 10 p. m.
KVOO	Briston, Okla.	375	1000	Daily except Sun., 9 to 11 p. m.
KTHS	Hot Springs, Ark.	375	1000	Daily 7 to 9:30 p. m.
WHAZ	Troy, N. Y.	379	1000	Mon., 5 to 7:30 p. m.
WYG	Schenectady	380	5000	Daily except Sun., 3 to 9 p. m.
WEAR	Cleveland, Ohio	389	1000	Tues., Thurs. and Fri., 4 to 8 p. m.
WTAM	Cleveland, Ohio	389	1000	Daily except Sun., 3 to 9 p. m.
PWAX	Havana	400	1000	Daily except Thurs., 5 to 8 p. m.
WJY	New York, N. Y.	405	5000	Fri., 4:30 to 8:30 p. m.; Sun., 5 to 7:30 p. m.
CYJ	Mexico City, Mexico	410	1000	Daily except Sun., 7 to 8 p. m.
CFCF	Montreal	411	2000	Mon. and Fri., 5:30 to 8:30 p. m.
KCAC	Montreal	411	1500	Tues. and Thurs., 6 to 9 p. m.
KFQB	Ft. Worth, Texas	412	2500	Daily except Sun. and Wed., 6 to 10 p. m.
WCCO	St. Paul, Minn.	416	5000	Wed., 12:30 to 9:30 p. m.
KFXF	Denver	422	500	Mon., Tues., Sat., 7:30 to 9:30 p. m.
WLW	Cincinnati	422	5000	Sat., 5 to 6 p. m. Mon., 6 to 8 p. m.
WSB	Atlanta, Ga.	428	1000	Diy. ex. Sun., 6-7 p. m.; ex. Wed., 8:45-10 p. m.
AT9	Fort Bragg, N. C.	434	750	Tues., Thurs., Sat., 5 to 7 p. m.
NAA	Arlington, Va.	435	1000	Wed., 4:45-5 p. m.; Fri. 5:45-6:20 p. m.
WQJ	Chicago	447	500	Daily except Sun. and Mon., 8 to 12 p. m.
WMAQ	Chicago, Ill.	448	1000	Daily except Sun. and Mon., 6 to 8 p. m.
WJZ	Boundbrook, N. J.	454	5000	Daily except Sun., 1 to 3 p. m.
WBAP	Ft. Worth, Texas	476	5000	Mon., Wed. and Fri., 9 p. m. Popular prog.
CYL	Mexico City	480	1000	Sun., Tues., Fri., 8 to 9 p. m.
WEAF	New York City	491	5000	Daily except Sun., 3 to 9 p. m.
WOO	Philadelphia	508	500	Daily, 4:30 to 5:30 p. m.
WCX	Detroit	517	5000	Daily except Sat. and Sun., 4 to 8 p. m.
WOW	Omaha	526	1000	Tues. and Thurs., 4 to 9 p. m.
WNYC	New York, N. Y.	526	1000	Daily except Sun., 3 to 8 p. m.
WHO	Des Moines	526	5000	Daily except Sat. and Wed., 9 to 10 p. m.
KYW	Chicago	536	3500	Daily except Sun. and Mn., 3 to 9:30 p. m.
KSD	St. Louis	545	500	Thurs., Fri. and Sat., 7 to 9 p. m.

Hours Shown as Submitted by These Stations Adjusted to Pacific Standard Time

Hear Our 6-Tube Balanced Crosleys, Childs Lab., 1187 W. 24th

BOSCH RADIO



FRANCHISED BOSCH DEALERS

Los Angeles

H. D. HATFIELD & SONS
1762 N. Vermont

BOSCH ZENITH
926 S. Los Angeles

BOB BROWN
4353 S. Figueroa

LEE'S RADIO & ART SHOP
4545 Whittier Blvd.

G. S. MATTERN
1302½ W. 12th St.

Baldwin Park

J. J. PEYTON & SON

Covina

J. J. PEYTON & SON

Elsinore

ELSINORE PLUMBING &
ELECTRIC

Fontana

MOORE HARDWARE

Fullerton

NELSON MUSIC COMPANY

Glendora

J. J. PEYTON & SON
108 N. Michigan

Inglewood

RELIABLE RADIO SALES &
SERVICE

Long Beach

MILLS ELECTRIC CO.
326 Pine Street.

Monrovia

J. H. TERRY
416 S. Myrtle Ave.

Monterey Park

MONTEREY PARK MUSIC
Co.

Pasadena

W. A. YEISLEY
816 E. Washington

Pomona

HALVORSON'S ELECTRIC
SHOP
274 E. 2nd St.

Redlands

YOUNT & DALY

Riverside

RIVERSIDE MUSIC Co.

Santa Barbara

McGEARY
1321 State St.

Solano Beach

SOLANO DRUG SUNDRIES
Co.

Reiman Wholesale Electric Co.

218 to 228 East Third St.

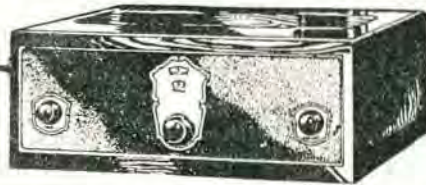
Los Angeles

MEtropolitan 4280

WHOLESALE ONLY

When you buy Stewart-Warner Radio You also

buy Satisfactory Performance



Model 345 - 6 Tubes
 - Single dial Control -
 \$8250 Without Accessories -

New producer -
 Model 415 -
 3150

Los Angeles Dealers

ATWATER RADIO & ELEC. CO.
 3208 Glendale Blvd.
 CHAPMAN HOUSE SALES CO.
 4377-78 S. Figueroa St.
 DEAN K. BARRIS
 3100 S. Vermont Ave.
 BENSON HARDWARE COMPANY
 416 South Broadway
 BIRONG & BUSHARD
 1717 W. Adams St.
 DON FINKLE
 2207 West Jefferson
 A. W. COOPER
 1816 W. 39th St.
 FRANK W. HASBROUCK
 6211 S. Vermont
 HARRY SAVOY
 828 West Jefferson St.
 HOLLAND ELECTRIC SHOP
 5632 Pasadena Ave.
 HIDLEY RADIO & BIKE HOUSE
 817 South Main St.
 HINES RADIO
 7822 South Broadway
 INTERPHONE ELECTRIC CO.
 5510 Monte Vista St.
 MANCHESTER RADIO CO.
 1522 E. Manchester Ave.
 MOHAWK BAT. & RAD. CO.
 2115 Sunset Blvd.
 NILSSON & NELSON
 4320 Avalon Blvd.
 NORTON & NORTON
 2211 N. Broadway
 POTTER RADIO SALES CO.
 1817 W. 84th St.
 CHAS. A. ROBINSON
 4502 S. Normandie
 RADIO ELECTRIC SHOP
 702 S. Vermont Ave.
 A. C. SINGER
 4127 Pasadena Ave.
 THAYER ELECTRIC CO.
 3908 Whittier Blvd.
 VISSER RADIO AND ELEC. CO.
 4750 Whittier Blvd.
 WEST BATE RADIO & ELEC.
 2510 W. Pico St.
 WEST STATES ELECT. CO.
 4751 South Broadway

Hollywood Dealers

BARROWS & CONKWRIGHT
 5545 Sunset Blvd.
 DORAN'S ELECTRIC SHOP
 7515 Sunset Blvd.
 DORAN'S ELECTRIC SHOP
 8030 Santa Monica Blvd.
 GLOW ELECTRIC CO.
 5910 Hollywood Blvd.
 H. D. HATFIELD & SON
 1782 N. Vermont Ave.
 MELROSE RADIO SHOP
 5563 Melrose Ave.

Southern California Dealers

ALHAMBRA, LeRoy S. Franklin
 844 W. Main
 ANAHEIM, Bennett's Radio Shop
 320 Center St.
 ARTESIA, Wm. S. Hayes
 325 N. Main St.
 BARSTOW, Barstow Radio Shop
 BELLFLOWER, Stewart-Warner
 Radio Shop
 Pacific and Mayne Sts.
 BREA, Bennett's Radio Shop
 120 S. Pomona Ave.
 CALEXICO, City Electric Co.
 313 Second St.
 CHATSWORTH, C. H. Preston & Son
 CHINO, Woods Radio Company
 413 1/2 St. St.
 CHULA VISTA, Inspeck & Procter
 347 Third Ave.
 COLTON, H. C. Elias
 658 S. Seventh St.
 COMPTON, Model Electric Co.
 138 E. Main St.

CORONADO, Coronado Radio Shop
 1911 Orange Ave.
 COVINA, Harold R. Houser
 115 College St.
 CULVER CITY, Culver City Radio &
 Elec. Co.
 8715 Washington Blvd.
 EAGLE ROCK, Weaver & King
 5112 Eagle Rock Blvd.
 EL CENTRO, Bowles & Son
 Seventh and Main St.
 EL SEGUNDO, B. W. McAllister
 110 Grand Ave.
 EL MONTE, Weaver & King
 (El Monte Edw. Co.)
 ENCINITAS, Lee & Rosen
 ESCOMIDIDO, Dietrich's Electric Shop
 112 S. Kalmia
 GARDENA, Don Spears
 725 W. 146th St.
 GLENDALE, Alexander Radio Shoppe
 Alexander Theatre Arcade
 2100 N. Brand Blvd.
 GLENDALE, Willard Heilmas
 (Broadway Elec.)
 202 E. Broadway

GLENDORA, James M. Reed
 HERMOSA BEACH, Rose Radio Store
 316 Camino Real
 HUNTINGTON PARK, H. L. (Radio)
 King
 110 E. Irvington St.
 RYNES, Van & Jenkins
 INGLEWOOD, R. D. Aylesworth
 111 N. Market St.
 LA JOLLA, Redding & White
 7402 La Jolla Blvd.
 LA MESA, La Mesa Radio Studio
 LANCASTER, E. A. Knelp
 BISHOP: Griffith Bros.
 LONE PINE: Griffith Bros.
 LONG BEACH, Alday & Crandall
 1118 American Ave.
 LONG BEACH, The Electric
 Radio Co.
 1719 E. Anaheim
 LONG BEACH, Harold A. Niekle
 159 Nieto St.
 LONG BEACH, W. L. Horrell
 740 Pine St.

True, lifelike reproduction of broadcasted programs is assured to the owners of Stewart-Warner Matched Unit radio by the careful synchronizing of all units in the factory. Stewart-Warner manufacturers not only their own receivers . . . but also produce, in their own factories, the reproducing units, the double tested Stewart-Warner tubes and even the aerial equipment that is sold, in a complete kit, by authorized Stewart-Warner dealers.

Every Stewart-Warner unit, from receivers to tubes, is carefully tested with other units and the performance of each carefully matched with the others. The resulting combination, STEWART-WARNER MATCHED UNIT RADIO, is, we believe, the most efficient radio equipment ever offered to the public.

We do not ask you to believe this on our "say so." Any of the Stewart-Warner dealers named in this advertisement will gladly demonstrate, in your own home if you prefer, the truth of these statements. He will also explain to you the easy terms on which Matched Unit Radio can be bought. Call on your nearest Stewart-Warner dealer today.

LYNWOOD, Lynwood Elec. Co.
 204 N. Long Beach Blvd.
 NEWHALL, C. E. Graham
 OCEAN PARK, Crescent Tire and
 Supply Co.
 Bay and Main Sts.
 OCEANSIDE, Dudley L. Axe
 Second St.
 ORANGE, Roy Des Larzes
 145 N. Glassell St.
 OWENSMOUTH, Roy O. Sebrus
 PASADENA, Wyckoff & Verrinder
 147 North Lake St.
 PACIFIC BEACH, James R. Ramsey
 PALMS, Brickell Radio Elec. Co.
 12204 Washington Blvd.
 PASADENA, Premier Radio
 11 California St.
 PASADENA, Premier Radio Co.
 Athletic Club Bldg.
 PASADENA, DeWitt Radio
 Laboratory
 2448 East Colorado Ave.
 PASO ROBLES, R. C. Heates
 PICO, Pico Radio Shop
 POMONA, George W. Hiatt
 183 E. Third St.
 REDONDO, L. & L. Sales Co.
 210 Diamond St.
 REDLANDS, J. L. Yeout
 106 W. Citrus Ave.
 RIVERSIDE, Frank W. Chasey
 996 Market St.
 SAN BERNARDINO, Surr. Smith
 & Gurr
 439 Fourth St.
 SAN DIEGO
 "Radio Smith"
 1241 28th St.

"Better Radio"
 2555 University Ave.
 Siles H. Dutkos
 3355 Van Dyke
 Guy H. Parmenter
 2725 San Diego Ave.
 SAN FERNANDO, Willis Rowe
 SAN LUIS OBISPO, Cline Elec. Co.
 984 Monterey St.
 SAN PEDRO, San Pedro Fur. Co.
 225 W. Sixth St.
 SANTA ANA, Shafer's Music Store
 415 N. Main St.
 SANTA BARBARA, Val Falger
 732 State St.
 SANTA MARIA, Ford & Smart
 118 E. Main St.
 SANTA MONICA, J. C. Suits
 825 Wilshire
 SANTA PAULA, The Music Shop
 104 W. Main St.
 SATECOY, H. H. Wright
 Sixth and D Sts.
 TAFT, L. H. Bird
 610 Center St.
 TONOPAH, NEVADA
 Tonopah Electric Company
 UPLAND, Jay M. Rees
 VENICE, Stewart-Warner Radio
 Studio
 1020 Washington Blvd.
 WALNUT PARK, Terminal Electric
 1606 Sevilla St.
 WESTMINSTER, Martin Engel
 WHITTIER, H. C. Osham
 133 S. Greenleaf
 WILMINGTON, S. F. Channing
 716 W. Anaheim St.

Stewart-Warner Products Service Station
 { Wholesale Distributors Stewart-Warner Radio }
 1366 South Figueroa Street - LOS ANGELES
 811 Front Street (near "F") - SAN DIEGO



LESLIE ADAMS
Assessor

Los Angeles, California—467 Meters

KFI

4000 WATTS—840 KILOCYCLES
Radio Central Super-Station of Earle C. Anthony, Inc.
1000 S. Hope. Phone WE. 0331. After P. M., WE. 0337
Class "B" 5000-Watt W. E. Sta., Operating on 4000 Watts
ROBERT HURD, Program Manager

DAILY EXCEPT SUNDAY—

5:30 p. m.—Musical Program.
6:15 p. m.—Radiotorial.
6:30 p. m.—Vest Pocket.

MONDAY, WEDNESDAY AND FRIDAY—

KFI Woman's Interest Department—Under the Direction of Agnes White.
10:00 to 10:20 p. m.—Talk on Face and Scalp Hygiene, by Georgia O. George.
10:20 to 10:40 a. m.—Furnishings for the home by Agnes White, director of the Dept.
10:40 to 11:00 a. m.—Betty Crocker—Gold Medal Flour Home Service Talks.
11:10 to 11:30 a. m.—Food talks by Agnes White.

WEEK COMMENCING SUNDAY, FEBRUARY 6, 1927

SUNDAY, FEBRUARY 6—

10:00 a. m.—Services under direction of Los Angeles Church Federation.
11:00 a. m.—Third Church of Christ, Scientist.
2:45 p. m.—San Francisco Symphony Orchestra, direction of Alfred Hertz. Broadcast simultaneously by KFI, Los Angeles; KPO, San Francisco, and KGO, Oakland. Presented by the Standard Oil Company of California.
6:00 p. m.—Weekly program by the Russian Academy of Musical Art.
6:58 p. m.—Father Ricard's Sunspot Weather Forecast.
7:00 p. m.—Aeolian Organ Recital, with Mrs. Edward C. Crossman, contralto, as soloist.
8:00 p. m.—Packard Classic Hour.
9:00 p. m.—Bob Bottger and his Venetians Dance Orchestra.
10:00 p. m.—Weekly program by the Packard Six Orchestra, Bill Hennessy, director.

MONDAY, FEBRUARY 7—

7:00 p. m.—Starke Sisters; Hale Hooper, tenor.
8:00 p. m.—Brahms Quartet.
9:00 p. m.—Ruth Palethorpe, soprano, and Lewis A. Kerwin, concert pianist.
10:00 p. m.—Program presented by Meiklejohn Bros., presenting vaudeville stars.

TUESDAY, FEBRUARY 8—

6:30 p. m.—Velma Wood, piano recital.
7:00 p. m.—Jack Martin's Hawaiian Trio; Clark Sisters.
8:00 p. m.—Gatone String Quartet; Gretchen Garret, soprano.
9:00 p. m.—Belle Levinson, soprano; Lewis A. Kerwin, accompanist; Orline Burrow, violinist, and Thomas Wallace, baritone.
10:00 p. m.—The Weekly Azure Music Club, with Glenn Edmunds and his Collegians Dance Orchestra, and Edna Cook, blues singer.

WEDNESDAY, FEBRUARY 9—

12:10 to 12:50 p. m.—Third Church of Christ, Scientist, lecture by John M. Tutt.
7:00 p. m.—Ray Fisher's Original Victorians Dance Orchestra.
7:30 p. m.—Nick Harris, Detective Stories.
7:45 p. m.—Eugenia Whisenant, singer of popular songs.
8:00 p. m.—Chico De Verde, director of the Calpet String Quartet, and Ralph Reily, tenor, with Emma Kimmel, soprano, on the California Petroleum Corporation program.
9:00 p. m.—Margaret Vail, contralto, and Frances Brockett Kellogg, in a joint program.
10:00 p. m.—Sunset Instrumental Quartet, with Dorothy Ruth Miller, concert pianist, and La Mont Stetzer, bass baritone.

THURSDAY, FEBRUARY 10—

7:00 p. m.—Weekly program by the University of Southern California.
8:00 p. m.—KFI Drama Hour.
8:30 p. m.—Kitty Short in a Recital.
9:00 p. m.—Hugh Wellington, baritone; Margaret Craven, soprano.
9:30 p. m.—Program by Grace Eaton Dow and Lupe Rodriguez.
10:00 p. m.—Johnston and Farrell's Music Box Hour, under the direction of Gene Johnston, presenting the Jim, Jack and Gene Trio, with soloists.

FRIDAY, FEBRUARY 11—

7:00 p. m.—Program by Paul Roberts, popular tenor, and Grace Mead, soprano.
8:00 p. m.—Aeolian Organ Recital, with Clara Duval, mezzo soprano.
9:00 p. m.—Program by Alma Frances Gordon, contralto; Lillian Ariel, pianist, and the Bilezza Trio.
10:00 p. m.—Packard Ballad Hour; Harry Rowe, baritone; Ruth and Dolores Palethorpe, sopranos, and Lewis A. Kerwin, accompanist.

SATURDAY, FEBRUARY 12—

7:30 p. m.—Scott Blakely, Scotch comedian.
8:00 p. m.—Mission Bell Orchestra; Pryor Moore, director, on the Los Angeles Soap Co. program. Broadcast simultaneously by KFI, Los Angeles, and KPO, San Francisco.
9:00 p. m.—Program by California Federation of Music Clubs.
10:00 p. m.—Packard Radio Club.
11:00 p. m.—KFI Midnight Frolic.

Program Published as Submitted by the Station.

Copyright 1927 by Earle C. Anthony, Inc.

for **Kellogg, Gilfillan**
and these great accessories
Sherman, Clay & Co!



Advantageous
territory
still open
to live
dealers—
Investigate!

Coast Distributors—

Sherman, Clay & Co.

Victor Distributors

Los Angeles: 10th and Santee Sts.

San Francisco: 536 Mission St.

Oakland: 5175 Telegraph Ave.

Portland, 487 Glison St.

Seattle: Republican St. and Terry Ave.

Spokane: 330 West Sprague Ave.

Kellogg
receivers

Gilfillan
receivers

O'Neil
cone loudspeakers

Rola
cone speakers

Victor
loudspeakers

Sherman
batteries

Westinghouse
"Auto-Power"
A-Battery
eliminators

Silver Beauty
chargers

Pemco
power units

R. C. A.
radiotrons

Eveready
batteries

Philco
batteries and
socket powers

For information as to DEALER TERRITORY clip and mail this
to nearest Sherman Clay & Co. wholesale branch. (R. D.)

Name _____

Address _____

Interested in _____



"Uncle John" Daggett
Announcer

Los Angeles, California—405.2 Meters

KHJ

500 WATTS—740 KILOCYCLES

Times Bldg., First and Broadway, Los Angeles
Owned and Operated by Los Angeles Times

JOHN S. DAGGETT, Manager and Program Announcer
Phone MEt. 0700

"Kindness, Happiness and Joy"

NIGHTLY EXCEPT SUNDAY AND MONDAY—
7:30 p. m.—Scripture Reading.

WEEK COMMENCING SUNDAY, FEBRUARY 6, 1927

SUNDAY, FEBRUARY 6—

- 10:00 a. m.—Sermon from the Studio KHJ, Rev. W. C. Ruehle,
10:30 a. m.—Organ recital and morning service from the First Methodist Episcopal Church,
7:00 to 8:00 p. m.—Evening services from the First Methodist Episcopal Church.
8:00 to 10:00 p. m.—News items. Program presenting Burr McIntosh, "The Cheerful
Philosopher;" Albert Lee, baritone, and the Union Pacific Band, M. S. Sullins, director.

MONDAY, FEBRUARY 7—

- 8:00 p. m.—Nightly weather report.

TUESDAY, FEBRUARY 8—

- 2:30 p. m.—Weekly bridge game.
6:30 to 7:30 p. m.—Children's Hour, including the weekly visit of the Radio Fairies, Queen
Titania and her Sandman; Charles D. Roy's Harmonica Band; Eugenia Abriel, 10-year-
old singer, and Charles Leslie Hill, "Honey Boy of KHJ, and others.
7:40 p. m.—H. M. Robertson will talk on "Dogs."
8:00 to 10:00 p. m.—News items. De luxe program.
10:00 to 11:00 p. m.—Dance music by the Los Angeles Railway Orchestra.

WEDNESDAY, FEBRUARY 9—

- 2:30 p. m.—"Garden Talk" by Fred C. McNabb.
6:30 to 7:30 p. m.—Children's program, presenting Lois Jane Campbell, "Brown Eyes;"
Patricia Eccleston, "Little Daffodil;" Vivian Marple, "Blue Bell of KHJ;" Dick Win-
slow, juvenile reporter; Glenn Fitz, "Optimistic Mascot;" Viola Essen, 3-year-old reader.
7:40 p. m.—Talk on "Astronomy," by Dr. Mars Baumgardt.
8:00 to 9:00 p. m.—Program by the Boy Scouts of America.
9:00 to 10:00 p. m.—Program by the Selwyn Harris studio.
10:00 to 11:00 p. m.—Dance music by the Jinnistan Vale Orchestra.

THURSDAY, FEBRUARY 10—

- 6:30 to 7:30 p. m.—Children's Hour, including Jeanne de Bard, "Bonnie Jeanne;" Joyce
Coad, "Little Red Riding Hood;" June Brandon, contralto; Dickie Brandon,
7:40 p. m.—"Care of the Body" talk by Dr. Philip M. Lovell.
8:00 to 10:00 p. m.—News items. Program presenting the Zoelner Quartet, and others.
10:00 to 11:00 p. m.—Dance music by Glenn Edmunds and his Varsity Four.

FRIDAY, FEBRUARY 11—

- 6:30 to 7:30 p. m.—Children's program, presenting Marguerite Bringham, "Nightingale;"
Collins Twins, Catherine and Ellen, juvenile singers; Roberta Bush, "Firefly;" David
Durand, "Little Boy Blue;" Henrietta Poland, "Forget-me-not," and others.
7:40 p. m.—Stanley Hall, monologist.
8:00 to 10:00 p. m.—News items. Program, including Dot Street, soprano; Grace Cürey.

SATURDAY, FEBRUARY 12—

- 6:30 to 7:30 p. m.—Children's program, including Nona Clapp, "Sunshine Fairy;" Arthur
Stevens, "King Arthur;" Dolly Wright, "Dolly of Radioland;" Marjorie Genevieve Lowe,
7:30 p. m.—Program by the Salvation Army Temple.
8:00 to 10:00 p. m.—News items. Program presenting the Los Angeles Railway Hawaiian

Program Published as Submitted by the Station.

SILVER THE KING

24 Kt Gold
Pure Silver
Soft
Copper

Gosilco Super Aerial Wire

Gold over Silver on Copper

DX Reception Assured—30% More Volume—Remarkably
Selective—Permanent

No. 14 Gauge, 3c per foot. Soft Round Bus, 10c 2-foot Length.
SOLD BY ALL DEALERS—Prepaid or C.O.D., Checks Accepted

GOSILCO RADIO PRODUCTS CO.
HUNTINGTON PARK, CALIF.

320 Marbrisa Ave., Vicinity Santa Fe and Irvington
Patent Applied For

The Catalina Island Swim

One of these sets accompanied Mrs. Margaret Hauser in her swim.
Several of the swimmers had this set on their pilot boat.



The Companionable Set

*Light weight—easily handled—can be taken any place.
Perfect reproduction, selectivity, volume; beautifully designed.
Will Fit in Any Setting.*

The Lowest Priced Set of Its Kind on the Market.

ON DISPLAY IN LOS ANGELES AT

The Ambassador Hotel The Biltmore Hotel
Subway Terminal Waiting Room (between 4th and 5th on Hill St.)
13 Mercantile Arcade

Distributed by

Johnson Radio Co., 688 Geary Street, San Francisco
The Radio Studios, 1207 Fourth Ave., Seattle

KEMPER RADIO LABORATORY

1236 Santee St.

LOS ANGELES

Westmore 2504

Makers of Kemper Ampliphonic Console



E. J. ALBRIGHT,
Announcer

Hollywood, California—337 Meters

KNX

750 WATTS—890 KILOCYCLES
LOS ANGELES EVENING EXPRESS
Paul G. Hoffman's Studebaker Bldg., 6116 Hollywood
Blvd., Hollywood. Phone HEMstead 4101
NAYLOR ROGERS, Manager and Program Director
GLEN RICE, Asst. Manager
"The Voice of Hollywood"

DAILY EXCEPT SUNDAY—

- 8:00 a. m.—Inspirational talk and morning prayer.
8:55 a. m.—Time signals from Washington, D. C., followed by
Birthdays notices.
9:00 a. m.—Radio Shopping News, conducted by Carey Preston
Ritteneisetr.
10:00 a. m.—Town Crier of the Day and his pals.
10:30 a. m.—Kate Brew Vaughn, Director Household Economics Dept., Evening Express,
except Friday and Saturday.
12:00 noon—Magnevox Radio Orchestra, George Redman, director,
12:30 p. m.—W. F. Alder Travelogue.
1:30 p. m.—The Book Worm.
2:00 p. m.—Radio Trades Association musical program.
4:00 p. m.—Lost and Found Column.
4:55 p. m.—Market reports.
5:45 p. m.—The Town Tattler.
6:00 p. m.—George Redman's Concert Orchestra playing from Leighton's Arcade Cafeteria
6:30 p. m.—Dinner hour concert, presenting the Yale Radio Battery Orchestra.

WEEK COMMENCING SUNDAY, FEBRUARY 6, 1927

SUNDAY, FEBRUARY 6—

- 10:00 a. m.—First Presbyterian Church of Hollywood, Rev. Stewart P. MacLennan.
2:00 to 4:00 p. m.—City Park Board musical program.
4:00 p. m.—Roberts' Golden State Band.
5:15 p. m.—Wilshire All-Souls Church.
6:30 p. m.—Hollywood Unitarian Church.
7:00 p. m.—First Presbyterian Church of Hollywood, Rev. Stewart P. MacLennan.
8:00 p. m.—Circle Theater Concert Orchestra and organ recital,
9:00 p. m.—Velvetone Corporation, courtesy program.

MONDAY, FEBRUARY 7—

- 7:00 p. m.—First Presbyterian Church of Hollywood.
7:00 p. m.—Birkel Music Company, courtesy program.
7:30 p. m.—Playlet, courtesy Overell Furniture Company.
8:00 p. m.—L. W. Stockwell Company, courtesy program, with Calmon Luboviski, master
violinist, and Claire Mellonino, concert pianist.
9:00 p. m.—B. F. Goodrich Rubber Company of Akron, Ohio,
10:00 p. m.—KNX Feature program.
11:00 p. m.—Hotel Ambassador, Gus Arnheim's Coconut Grove Orchestra.

TUESDAY, FEBRUARY 8—

- 3:00 p. m.—Combined program of Police and Fire Department.
4:00 p. m.—Radio Matinee, with Louise Howatt, contralto.
7:00 p. m.—Wilshire Ioanco Company, courtesy program.
8:00 p. m.—Feature program.
9:00 p. m.—Western Auto Supply Company, courtesy program.
10:00 p. m.—Hotel Ambassador, Gus Arnheim's Coconut Grove Orchestra.

WEDNESDAY, FEBRUARY 9—

- 7:00 p. m.—Birkel Music Company, courtesy program.
7:30 p. m.—Feature program.
8:00 p. m.—Security Trust and Savings Bank, courtesy program.
9:00 to 11:00 p. m.—Feature program.
11:00 p. m.—Hotel Ambassador, Gus Arnheim's Coconut Grove Orchestra.

THURSDAY, FEBRUARY 10—

- 11:00 a. m.—Nature talk, courtesy Marvel Ant Gelatine Company.
7:00 p. m.—Organ recital, courtesy of the Overell Furniture Company.
8:00 p. m.—Bert Farrar, Inc., courtesy program.
9:00 to 10:00 p. m.—Broadway Department Store,
10:00 p. m.—Feature program.
11:00 p. m.—Hotel Ambassador, Gus Arnheim's Coconut Grove Orchestra.

FRIDAY, FEBRUARY 11—

- 3:00 p. m.—Los Angeles District Federation of Women's Clubs musical program.
4:00 p. m.—Boy Scouts' musical program.
7:00 to 8:00 p. m.—Feature program.
8:00 p. m.—Security Trust & Savings Bank program.
9:00 p. m.—Davis Perfection Broad Company, courtesy program.
10:00 p. m.—Feature program.
11:00 p. m.—Hotel Ambassador, Gus Arnheim's Coconut Grove Orchestra.

SATURDAY, FEBRUARY 12—

- 3:00 p. m.—Town Crier of the Day and his Pals.
7:00 p. m.—Stories of insect life by Harry W. McSpadden.
7:30 p. m.—Feature program.
8:00 to 9:00 p. m.—Los Angeles Opera and Fine Arts Club.
10:00 p. m.—Hotel Ambassador, Gus Arnheim's Coconut Grove Orchestra.
11:00 p. m.—KNX Frolic from the main studio.

Program Published as Submitted by the Station.

ATWATER KENT RADIO

*Speed and Distance
with ONE DIAL*

With the utmost ease, the Atwater Kent Model 32 selects any station that's on the air and within range. There is no time lost in fussing with two or three dials,—half a turn of ONE dial suffices.

And the distance you can reach is astounding! You select one distant station after another just like skipping from local to local, and just as easy.



Model 32
Atwater Kent Receiver
with one dial, \$145
(less accessories)

Radio
Speaker
Model H
\$22



RAY THOMAS INC.
Atwater Kent Distributor

1248 S. Hope St. WE 6334
LOS ANGELES



Gerald L. King
Manager

Hollywood, California—252 Meters

KFWB

500 WATTS—1180 KILOCYCLES
WARNER BROS. MOTION PICTURE STUDIOS
Warner Bros. West Coast Studio, 5842 Sunset Blvd.
GERALD L. KING, Mgr. WM. RAY, Asst. Mgr.
Phone GL. 9461
"Movie Land"

DAILY EXCEPT SUNDAY—

12:30 to 1:30 p. m.—Classified Hour.
6:00 to 7:00 p. m.—Pontiac Six Dinner Hour
MONDAY, TUESDAY AND WEDNESDAY—
5:00 to 6:00 p. m.—Children's Hour
10:00 to 11:00 p. m.—Musical program from Mayfair Hotel.
11:00 to 12:00 p. m.—Dance music from El Patio Ballroom.

WEEK COMMENCING SUNDAY, FEBRUARY 6, 1927

SUNDAY, FEBRUARY 6—

8:30 to 9:00 p. m.—Program by courtesy of The Southern California Music Company.
9:00 to 11:00 p. m.—Warner Bros. Frolic.

MONDAY, FEBRUARY 7—

7:00 to 8:00 p. m.—Program by courtesy of The J. N. Pyles National Detective Service, featuring their concert orchestra and soloists.
8:00 to 9:00 p. m.—Kenneth Gilum, Jean Raymond and Warner Bros. Dance Orchestra
9:00 to 9:50 p. m.—LaMont Stetzer and Warner Bros. European Novelty Orchestra.

TUESDAY, FEBRUARY 8—

7:00 to 8:00 p. m.—Program by courtesy of The Southern California Music Company.
8:00 to 9:00 p. m.—LeRoy Kulberg, Ann Grey and Warner Bros. Orchestra.
9:00 to 10:00 p. m.—Byrle Colby, H. A. Randall and Warner Bros. String Trio.

WEDNESDAY, FEBRUARY 9—

7:00 to 7:30 p. m.—Charles W. Hamp, presenting The Ionaco.
7:30 to 8:00 p. m.—Interesting announcements interspersed with musical numbers.
8:00 to 9:00 p. m.—Ina Mitchell Butler, Fred Kimball and Warner Bros. Orchestra.
9:00 to 10:00 p. m.—The Junior Symphony, under the direction of Albert Keglovich.

THURSDAY, FEBRUARY 10—

7:30 to 8:00 p. m.—Interesting announcements, interspersed with musical numbers.
8:00 to 9:00 p. m.—Jackie Lucas, Starke Sisters and Western Hawaiian Quartet.
9:00 to 10:00 p. m.—Eileen Johnson, Edwin Sonntag and Warner Bros. Concert Orchestra.

FRIDAY, FEBRUARY 11—

7:00 to 7:30 p. m.—Interesting announcements, interspersed with musical numbers.
7:30 to 8:00 p. m.—Program by courtesy of The La Vina Investment Company.
8:00 to 9:00 p. m.—Kenneth Gilum, Virginia King and Warner Bros. Orchestra.
9:00 to 10:00 p. m.—Julius Phillips, Ursula Cheshire and Warner Bros. String Trio.

SATURDAY, FEBRUARY 12—

7:00 to 8:00 p. m.—Carl Dye and his Melody Makers.
8:00 to 9:00 p. m.—Program by courtesy of The Mona Motor Oil Company.
9:00 to 10:00 p. m.—Jack Goode, Jane Munson and Warner Bros. String Trio.

Program Published as Submitted by the Station



Battery Table

—A BATTERY TABLE OF VERY PLEASING DESIGN AND PROPORTIONS, WITH AN ATTRACTIVE HIGH LIGHTED FINISH. CONSTRUCTED OF PHILIP PINE MAHOGANY IN TWO SIZES.

No. 1025—13½x27 in. Top—

\$12.50 List

No. 1026—13½x36 in. Top—

\$14.00 List

**A-1 WOODWORKING
COMPANY**

1332-1342 San Julian Street
Los Angeles



The same wonderful quality of the Farrand 36-inch Cone is faithfully reproduced in the 14-inch Cone at \$17.75 and the 17-inch walnut laminated wood Cone at \$35.00. Nothing is lost except extreme volume—unnecessary in the home.

If your set is power tube equipped, ask your dealer for a home demonstration. Your ear will convince you of Farrand superiority.

Sold by Dealers Everywhere

WESTERN RADIO, Inc.

Wholesalers of Fine Radio Merchandise Since 1919

1224 Wall Street
LOS ANGELES

WEStmore
3338



G' ALLISON PHELPS
Manager and Announcer

Hollywood, California—370.2 Meters

KMTR

500 WATTS
KMTR RADIO STATION
1025 N. Highland Avenue. Telephone HOLLY 3026
Owned and Operated by C. C. JULIAN
OLIVER S. GARRETSON, Technical Engineer
Portable Broadcast Station 6XBA

"Echoes of Hollywood"

DAILY EXCEPT SUNDAY—

7:30 to 8:00 a. m.—J. C. Casey in Setting-up Exercises.
1:30 to 2:30 p. m.—Radio Press Hour.
2:30 to 4:00 p. m.—Palais De Dance.
4:00 to 4:15 p. m.—Vacation Days.
5:00 to 5:30 p. m.—Home Hour.
5:30 to 6:00 p. m.—White King Male Quartet.
6:00 to 6:15 p. m.—Nightly Doings.
6:15 to 7:00 p. m.—Duro System Dinner Hour Concert.
7:00 to 7:30 p. m.—Musical Program.

10:00 to 11:00 p. m.—Miller's Cafe Lafayette Orchestra.
11:00 to 12:00 midnight—Dance Music from Palais de Dance.

TUESDAY, THURSDAY, SATURDAY—

9:30 to 10:00 p. m.—Sylvia, the Blind Cook.

WEEK COMMENCING SUNDAY, FEBRUARY 6, 1927

SUNDAY, FEBRUARY 6—

5:30 to 6:15 p. m.—White King Male Quartet, courtesy Los Angeles Soap Company.
6:00 to 6:15 p. m.—Nightly Doings.
6:30 to 7:00 p. m.—Leila Castberg's Half Hour.
7:00 to 8:00 p. m.—Miller's Lafayette Cafe Concert Orchestra.
8:00 to 9:30 p. m.—Concert Period. Jack Cronshaw's Orchestra.
9:30 to 10:30 p. m.—KMTR Feature Program.

MONDAY, FEBRUARY 7—

7:30 to 8:30 p. m.—Safeway Stores' Program.
8:30 to 9:30 p. m.—Eureka Vacuum Cleaner Company Program.
9:30 to 10:00 p. m.—KMTR Feature Program.

TUESDAY, FEBRUARY 8—

10:00 to 10:15 a. m.—Fifteen Minutes of Sunshine by Charles Hamp.
11:00 a. m. to 12:00 m.—Mme. Alene's Talk.
7:30 to 8:00 p. m.—KMTR Feature Program.
8:00 to 9:00 p. m.—Maxwell House Coffee Orchestra.
9:00 to 10:00 p. m.—KMTR Feature Program.

WEDNESDAY, FEBRUARY 9—

10:00 to 10:30 a. m.—Dr. Charles Watson.
7:30 to 9:00 p. m.—KMTR Feature Program.
9:00 to 10:00 p. m.—Los Angeles Railway Orchestra.

THURSDAY, FEBRUARY 10—

10:00 to 10:15 a. m.—Fifteen Minutes of Sunshine by Charles Hamp.
10:15 to 10:45 a. m.—The Diet Question Box.
7:30 to 8:00 p. m.—Winslow B. Felix, Chevrolet Courtesy Program.
8:00 to 10:00 p. m.—Ruth Roland Night.

FRIDAY, FEBRUARY 11—

1:00 to 1:30 p. m.—H. L. Copson Body and Top Works Courtesy Program.
7:30 to 8:00 p. m.—Thirty minutes of Sunshine by Charles Hamp.
8:00 to 10:00 p. m.—KMTR Feature Program.

SATURDAY, FEBRUARY 12—

10:00 to 10:15 a. m.—Charles Hamp, "The Ionaco."
10:15 to 11:30 a. m.—Audition Period.
1:00 to 1:15 p. m.—Gordon Whitnall, Managing Director City Planning Commission.
7:30 to 7:40 p. m.—Sheriff's Office. Bureau of Public Relations.
7:40 to 10:00 p. m.—KMTR Feature Program.

Program Published as Submitted by the Station.

SHEPHERD RADIO SERVICE

Authorized Dealer for

Stromberg-Carlson, Federal Ortho-Sonic Receiving Sets

We specialize in correcting balky receivers. Super-Heterodynes, Infradynes, Roberts, etc., made to perform efficiently
Transformers Matched, Coils Balanced
Phone Us Your Troubles. Our Service Will Please
Batteries Changed, Tubes Reactivated. Work Called for and Delivered

GRanite 7482

7562 Sunset Boulevard

Hollywood, California

Selling Like Hot Cakes

The Powell 'B' Eliminator

Uncondition-
ally
Guaranteed



\$12²⁵

Absolutely No Hum

Operates any set from light socket without the use of expensive and troublesome "B" batteries. A large surplus of power at 100 volts and at a cost of only a few cents a year.

MORE VOLUME - - MORE DISTANCE
GREATER SATISFACTION
BETTER QUALITY - - BETTER PRICE

No Tubes, No Acid and Nothing Else to Buy

A ten-day trial with absolute satisfaction or money back

GUARANTEE

This instrument is the result of months of experimenting and exhaustive tests. The best of materials and workmanship have been combined to insure its satisfaction with the user and it is guaranteed unconditionally for one year. If for any reason it fails to perform satisfactorily it should be returned to the seller who is instructed to repair or replace, free of charge.

Call or Telephone VERmont 1619 for Information

Powell Manufacturing Co.

4009 S. Western Ave.

Los Angeles, Calif.

Los Angeles, California—294 Meters

KTBI

750 WATTS—1020 KILOCYCLES
BIBLE INSTITUTE OF LOS ANGELES
MR. M. E. CARRIER, Manager
PROF. H. G. TOVEY, Director of Programs
Phone ME. 6701

DAILY EXCEPT SUNDAY—

8:30 to 9:00 a. m.—Devotional Hour.
2:00 to 3:00 p. m.—Inspirational Hour.

DAILY EXCEPT FRIDAY AND SUNDAY—

7:15 to 8:00 p. m.—Aunt Martha's Children's Hour.

WEEK COMMENCING SUNDAY, FEBRUARY 6, 1927

SUNDAY, FEBRUARY 6—

10:30 a. m. to 12:30 p. m.—Regular service of the Church of the Open Door.
6:00 to 7:00 p. m.—Radio Vesper Service. Sermon by W. E. McCulloch.
7:15 to 9:30 p. m.—Regular evening service of the Church of the Open Door. Sermon by Dr. G. Campbell Morgan.

MONDAY, FEBRUARY 7—

8:00 to 9:00 p. m.—Dr. G. Campbell Morgan will lecture.

TUESDAY, FEBRUARY 8—

8:30 to 9:00 p. m.—Dr. G. Campbell Morgan will lecture.

WEDNESDAY, FEBRUARY 9—

8:00 to 9:00 p. m.—Dr. G. Campbell Morgan will lecture.

THURSDAY, FEBRUARY 10—

8:00 to 9:00 p. m.—Dr. G. Campbell Morgan will lecture.

FRIDAY, FEBRUARY 11—

6:15 to 7:00 p. m.—Aunt Martha's Children's Program.
7:00 to 8:00 p. m.—Exposition of International Sunday School lesson.
8:00 to 9:00 p. m.—Dr. G. Campbell Morgan will lecture.

Program Published as Submitted by the Station.

Los Angeles, California—275.1 Meters

KFSG

500 WATTS—1090 KILOCYCLES
ANGELUS TEMPLE, ECHO PARK, Phone DR. 2560
AIMEE SEMPLE McPHERSON, Founder, President
ESSIE BINKLEY, Program Manager
ESTHER FRICKE GREENE, Organist
GLADWYN N. NICHOLS, Musical Director & Announcer
"Four Square Gospel"

DAILY EXCEPT SUNDAY AND MONDAY—

10:30 to 11:30 a. m.—Sunshine Hour.
11:30 a. m. to 12:30 p. m.—Noonday Musical.
6:30 to 7:30 p. m.—Angelus Hour.

DAILY EXCEPT SUNDAY, WEDNESDAY AND SATURDAY—

2:30 to 3:30 p. m.—Gray Studio Program.

WEEK COMMENCING SUNDAY, FEBRUARY 6, 1927

SUNDAY, FEBRUARY 6—

10:30 to 12:30 p. m.—Sunday morning worship, Evangelist G. A. Garr.
2:30 to 4:30 p. m.—Afternoon Dispensational service by G. A. Garr.
6:30 to 8:00 p. m.—Musical Hour. Angelus Temple Band and Choir.
8:00 to 9:30 p. m.—Revival service by G. A. Garr.
10:00 to 11:00 p. m.—Organ recital by Esther Fricke Greene.

TUESDAY, FEBRUARY 8—

3:30 to 4:30 p. m.—Vesper Hour. Organ recital by B. Earnest Ballard.
7:30 to 9:30 p. m.—Evangelistic service by student evangelists.

WEDNESDAY, FEBRUARY 9—

2:30 to 5:30 p. m.—Divine Healing Service by G. O. Garr.
7:30 to 9:30 p. m.—Regular mid-week prayer service by G. A. Garr.

THURSDAY, FEBRUARY 10—

3:30 to 4:30 p. m.—Vesper Hour. Organ recital by B. Earnest Ballard.
7:30 to 9:30 p. m.—Regular Water Baptismal service. G. A. Garr.
9:15 to 10:00 p. m.—Gray Studio Program.
10:00 to 11:00 p. m.—Organ recital by Esther Fricke Greene

FRIDAY, FEBRUARY 11—

3:30 to 4:30 p. m.—Vesper Hour. Organ recital by Esther Fricke Greene.
7:30 to 9:30 p. m.—Crusader Rally. Sermon by G. A. Garr.
10:00 to 11:00 p. m.—Back Home Hour.

SATURDAY, FEBRUARY 12—

3:30 to 4:30 p. m.—The Children's Happy Hour.
7:30 to 9:30 p. m.—Divine Healing Service conducted by G. A. Garr.



This is the Heavy-Duty battery in which the new Layerbilt construction provides greater economy

THERE'S an important discovery in radio economy awaiting all users of loud-speaker sets who have been buying the smaller Light-Duty "B" batteries instead of the large Heavy-Duty size required by such sets. Because the Light-Duty batteries cost somewhat less to buy they seem like an economy, but the surprising fact is that the Eveready Layerbilt No. 486 lasts more than twice as long though it does not cost anywhere near twice as much. It is, therefore, much more economical—we believe it to be the most economical "B" battery ever built.

Eveready Layerbilt's remarkable life is due to its unique construction. All other dry cell "B" batteries are assembled of cylindrical cells, with much waste space between them.

Several years ago we struck boldly out, away from this tradition, seeking a better method. We wanted to avoid waste space, minimize soldering, and get more current and longer life. The Eveready Layerbilt is the result.

This patented, exclusive battery is built in layers of flat current-producing elements, making automatic connection with each other. Every available inch inside the battery is occupied usefully.

Remember this about "B" batteries: All loud-speaker sets require Heavy-Duty batteries, and the Eveready Layerbilt has proved time and again to be the longest lasting and most economical Heavy-Duty "B" battery.

NATIONAL CARBON CO., INC.
New York San Francisco
Unit of Union Carbide and Carbon Corporation



Dave Ward
Announcer

Hollywood, California—226 Meters

KFQZ

1641 North Argyle Ave., Hollywood, California
Gladstone 3197; GLadstone 3198
DAVE WARD, Program Director and Announcer
L. E. TAFT, Technical Engineer
"The Palace Hungalon Studio"

DAILY EXCEPT SUNDAY—

12:00 to 1:00 p. m.—Los Angeles Merchants' and Manufacturers' Hour.

6:00 to 7:00 p. m.—Decker, Diamond and Decker, Hawaiian Trio.

7:00 to 8:00 p. m.—Musical Hour.

WEEK COMMENCING SUNDAY, FEBRUARY 6, 1927

SUNDAY, FEBRUARY 6—

8:00 p. m.—Aram Galanian's Orchestra and Al Flanigan, soloist.

9:00 p. m.—Dave Ward and his Yellow Jackets.

MONDAY, FEBRUARY 7—

8:00 p. m.—Semi-classical hour, conducted by Myra Belle Vickers.

9:00 p. m.—Dave Ward and his Yellow Jackets; Los Angeles Railway Quartet; Wendell Smith, Art Goodstein and Virginia King.

TUESDAY, FEBRUARY 8—

7:30 p. m.—Wilshire Ionaco Lecture.

8:00 p. m.—Police and Fire Joint Program, Officer Robt. F. Tracy.

10:00 p. m.—Dave Ward and his Yellow Jackets and Joie Lee in songs.

WEDNESDAY, FEBRUARY 9—

8:00 p. m.—Arni Fancier Concert Orchestra and Helen Boyd, soloist.

9:00 p. m.—Kitty and the boys and C. Howard Paxton, soloist.

10:00 p. m.—Dave Ward and his Yellow Jackets and Virginia King.

THURSDAY, FEBRUARY 10—

8:00 p. m.—Paramount Dance Orchestra and Ned Miller, soloist.

9:00 p. m.—Los Angeles Railway Orchestra, Ruth Michelson and Roy Wallace.

FRIDAY, FEBRUARY 11—

7:30 p. m.—Wilshire Ionaco Lecture.

8:00 p. m.—Hoot Gibson's Hawaiian Trio, Ed Pose and Hugh Wellington.

9:00 p. m.—Dave Ward and his Yellow Jackets, Pat Lee and Helen McColl.

SATURDAY, FEBRUARY 12—

8:00 p. m.—Silver String Glendalians and Ruth Donigan, soloist.

9:00 p. m.—Dave Ward and his Yellow Jackets; Eddie Mills and his 14 strings of harp; Don Stevens, Joie Lee, Bud Riley and Dick Powers in songs.

Program Published as Submitted by the Station.



E. C. Hueckebach
Announcer

Los Angeles, Calif.—517 Meters

KGEF

1000 WATTS—580 KILOCYCLES
TRINITY METHODIST CHURCH
BOB SHULER, Pastor
Phone BROADway 1000
C. C. HOOPER, Manager
M. J. HANKINS, Technician

SUNDAYS—

10:50 a. m. to 12:15 p. m.—Morning services.

5:00 to 6:00 p. m.—Vesper hour.

7:15 to 9:00 p. m.—Evening services.

9:00 to 10:00 p. m.—Old Hymns Songfest.

10:00 p. m.—Family Altar service.

WEDNESDAYS—

8:00 to 7:00 p. m.—Children's hour.

7:00 to 7:45 p. m.—Conroy's Bible Class.

7:45 to 8:45 p. m.—Studio musical program.

8:45 to 9:15 p. m.—Question hour.

FRIDAYS—

7:00 to 7:30 p. m.—Radio Bible Class.

7:30 to 8:00 p. m.—Studio musical program.

8:00 to 8:30 p. m.—Civic half hour.

8:30 to 9:30 p. m.—Southern California Holiness Association.

Program published as submitted by the station.

*Splendid
Service*



*Competent
Salesmen*

RADIOLA

28

The Superheterodyne at its best. No antenna or external connection required. Reception over extreme distances under favorable conditions on its attached loop. The selectivity and sensitivity will astonish you.

Phone TRinity 0746 for a Demonstration

Eastman Kodak Stores, Inc.

510 South Broadway
LOS ANGELES



George Frenger
Announcer

Pasadena, California—315.6 Meters

KPSN

PASADENA STAR-NEWS
1000 WATTS—950 KILOCYCLES
GEORGE CECIL COWING, Managing Director
GEORGE FRENGER, Program Manager
FORBES W. VAN WHY, Engineer-in-Charge
PERCY C. PRYOR, Studio Office
Phone, Wakefield 3111

DAILY EXCEPT SUNDAY—

12:00 to 12:15 p. m.—News Bulletin.

6:00 to 7:00 p. m.—Dinner-time news report.

WEEK COMMENCING SUNDAY, FEBRUARY 6, 1927

SUNDAY, FEBRUARY 6—

10:30 a. m.—Family Altar Service by the United Church Brotherhoods.

11:00 a. m.—Services from the Pasadena Presbyterian Church.

6:00 to 7:00 p. m.—Star-News concert, with Adolf Tandler and the Ensemble.

MONDAY, FEBRUARY 7—

8:00 to 9:15 p. m.—Star-News concert, with Adolf Tandler and the Ensemble.

TUESDAY, FEBRUARY 8—

8:00 to 9:15 p. m.—Star-News concert, with Adolf Tandler and the Ensemble

THURSDAY, FEBRUARY 10—

8:00 to 9:15 p. m.—Star-News concert, with Adolf Tandler and the Ensemble.

FRIDAY, FEBRUARY 11—

8:00 to 9:15 p. m.—Star-News concert, with Adolf Tandler and the Ensemble.

SATURDAY, FEBRUARY 12—

8:00 to 9:15 p. m.—Star-News concert, with Adolf Tandler and the Ensemble.

Program Published as Submitted by the Station.

Authorized

Stewart-Warner
Matched-Unit Radio

Dealers

FIVE TUBE, MODEL 300, COMPLETE, \$99.00 — TERMS

Ceco Tubes

Majestic B Units

Philco A and B Units

Acme Cone Speakers

National A Socket Power

Trickle Chargers, \$8.60

Console Cabinets

Cannon Ball Speakers

FULL LINE OF PARTS

MAIL ORDERS PROMPTLY FILLED

ATWATER RADIO & ELECTRIC COMPANY

3208 Glendale Blvd.

OLympia 6417

Los Angeles, Calif.

VERY SPECIAL HART & HEGEMAN
VERNIER DIALS WORTH \$1.65 **79c**

Ace "Guaranteed" "A" Tubes,

New Base \$.69

Large 45 Volt "B" Battery . . \$1.85

\$4.75 Heavy Duty "B" Bat. . . \$2.95

\$15.00 Baldwin Symphony

Speakers \$7.50

Serenada Loud Speakers \$3.70

6 V. 100 A. H. Storage Batter-

ies, 2 yr. Guar., H.R. Case. \$7.75

\$10.50 Trickle Chargers \$8.15

\$39.50 "B" Eliminators \$29.90

TRinity 4281
Open Evenings

J. C. RENDLER
EST. 1904
"THE RADIO CENTER"

625 So. Main
Los Angeles

"Goodwill Via Radio"

IT is a well known fact that the building of *Goodwill* through the medium of radio broadcast, when properly handled, brings most satisfactory returns.

WE specialize in preparing, arranging, placing and supervising or radio programs and announcements, telling the merits of your firm or your product to the listening public in an efficient and entertaining manner.

Walter Biddick

487 Chamber of Commerce Building
WESTMORE 9137—9138 LOS ANGELES

\$75.00 A WEEK

BUILDING RADIO SETS

—in your spare time

Join the Radio Association of America. Learn how to build and repair radio sets. The Association will train you—start you out in business if you wish. Be the radio "doctor" of your community. \$3 an hour upwards easily made. Radio offers you a big money-making opportunity right now.

EARN \$500 IN SPARE HOURS

"I have at last found myself," writes Lyle Follick, Lansing, Michigan. "I have already made over \$500 building radio sets after working hours." Werner Eichler, Rochester, N. Y., writes: "I have made over \$50 a week in my spare time."

Our members are starting radio stores, increasing their salaries, securing better positions, passing radio operator examinations, earning big money for the most enjoyable kind of spare-time work.

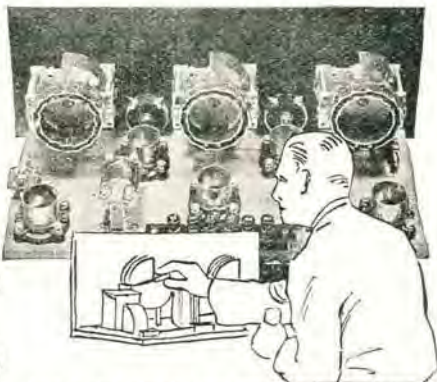
WHAT A MEMBERSHIP MEANS

A membership in the Radio Association of America gives you the most up-to-date and thorough training in the Science of Radio.

You're taught how to build and repair all kinds of sets. You're given the training you need in preparing for a Licensed Radio Operator's examination. You receive the privilege of buying parts at wholesale prices. You're helped to make money.

JOIN THE ASSOCIATION NOW

If you're interested in Radio for either pleasure or profit, join the Association without delay, because we



have a plan whereby your membership may not—need not—cost you a cent. Only a limited number of these memberships are acceptable. Write now for details. Write before it's too late.

This Association has prepared a beautiful book that gives figure-facts regarding the profit possibilities of the Radio Industry, the purpose of the Association, and the details of the Special Membership Plan.

MAIL THIS COUPON

RADIO ASSOCIATION OF AMERICA
 Dept. RD-2—4513 Ravenswood Ave., Chicago.
 Send me your book and details of your Special Membership Plan.
 Name.....
 Address.....
 City..... State.....



Tom Mitchell
Announcer

Santa Monica, California — 238 Meters

KNRC

1000 WATTS CAPACITY
Owned and Operated by KEIRULFP & RAVENS-
CROFT COMPANY.
Municipal Auditorium, Ocean Park, Santa Monica,
Calif. Phone Santa Monica 63-101.
TOM MITCHELL, Studio Manager and Announcer.
C. B. JUNEAU, Transmission Engineer.
"The Station with a Smile"

DAILY EXCEPT SUNDAY—

6:00 p. m.—Merchants Review.

6:30 to 7:30 p. m.—Club Casa Del Mar organ recital. Remote control.

7:30 p. m.—Merchants Review.

10:00 to 11:00 p. m.—Club Casa Del Mar Orchestra. Remote control.

DAILY EXCEPT MONDAY—

8:00 to 9:00 p. m.—Band Concert.

1:30 p. m.—Band Concert.

WEEK COMMENCING MONDAY, FEBRUARY 7, 1927

MONDAY, FEBRUARY 7—

4:15 p. m.—Brother Tom and Smiling Circle.

8:00 to 10:00 p. m.—Lee Young Jr. and his Gables Club Orchestra, Smiling Harvey Porter, Dorothy and Dawn Smith.

TUESDAY, FEBRUARY 8—

4:15 p. m.—Brother Tom and his Smiling Circle.

9:00 p. m.—Sherman Hunter, tenor; Georgia Williams Trio.

WEDNESDAY, FEBRUARY 9—

4:15 p. m.—Smiling Circle with Brother Tom.

9:00 p. m.—Pirate Band, Albert Broad, tenor.

THURSDAY, FEBRUARY 10—

4:00 p. m.—Brother Tom and his Smiling Circle.

9:00 p. m.—Red Wyatt, Goida Anderson Trio, Margaret Bechtel, Erma Reed.

10:00 p. m.—Club Casa del Mar Orchestra, by remote control through KNRC.

FRIDAY, FEBRUARY 11—

4:00 p. m.—Brother Tom and his Smiling Circle.

9:00 p. m.—Los Angeles Railway String Quartet and Band

SATURDAY, FEBRUARY 12—

4:15 p. m.—Brother Tom and his Smiling Circle.

9:00 p. m.—K and R Program.

11:00 p. m.—Gables Club Orchestra by remote control.

SUNDAY, FEBRUARY 6—

10:45 p. m.—Pilgrim Lutheran Church services by remote control through KNRC.

5:15 p. m.—The Pirate Band.

6:15 p. m.—Pilgrim Lutheran Church service.

7:00 p. m.—Club Casa del Mar Organ Recital.

8:00 p. m.—Municipal Band Concert.

9:00 p. m.—Club Casa del Mar Recital.

Program Published as Submitted by the Station.

PALMER RADIO LABORATORY

Established 1923

Specializing in

SUPER-HETERODYNES AND INFRADYNES

Intermediate Transformers Made and Calibrated

Also all other types of receivers made to operate efficiently

Satisfaction Guaranteed or No Charge

Advice Free •

Open Evenings Till 9 P. M.

Courtesy to All

4529 S. Vermont, Los Angeles. Phone VERmont 7883

Filter-Flex

LAMP SOCKET RADIO

This Radio Entirely Eliminates Both A and B Batteries
It Has More Power and Better Tone Than Any Other Set That
Sells at Anywhere Near Its Price



No
Batteries

No
Eliminators

No
Hum

THIS MODEL

\$125

Complete
Nothing extra to
buy and practi-
cally no upkeep.

Hear
It
Today

Call On Any of
the Below
Mentioned
Dealers for a
Demonstration.

Table
Model
Complete

\$9850

LOS ANGELES

Barnes Music Co.
332 S. Broadway
Martin Music Co.
734 S. Hill St.
Clark Radio Shop
9114 S. Vermont
C. & G. Electric Co.
1501 W. Santa Barbara
Clark Radio Store
8134 E. Vermont
De Heon Bros.
6215 S. Broadway
Davis Radio
2817 S. Main St.
No Battery Radio Co.
2708 S. Figueroa
Super Radio Shop
2507 W. Slauson
John A. Wilferth
729 W. Ninth St.
Max Tobias
2708 S. Figueroa
Nilsson & Nelson
4320 S. Avalon Blvd.
Tivoli Radio
4241 Central Ave.
Atwater Radio
3208 Glendale Blvd.
F. & H. Radio Co.
5011 York Blvd.

HOLLYWOOD

Cat's Meow
6653 Hollywood Blvd.
Hollywood Elec. Shop
6656 Hollywood Blvd.
ANAHEIM—Dunham & Knipe
162 West Center
BELL—Baker Ave. Elec.
910 Baker Ave.
BELLFLOWER—Bellflower Elec.
905 Summerset
COVINA—L. T. Hammersly
Citrus Ave.
CULVER CITY—Vian & Childress
6502 Washington Blvd.
DOWNEY—Darnell Elec. Shop
109 N. Crawford St.
GLENDALE—J. A. Newton Elec.
154 S. Brand Blvd.
HERMOSA BEACH—C.
Alexander
530 Camino Real
INGLEWOOD—Reliable
Radio Sales
114 Market St.
LONG BEACH—McGrery
Music Co.
216 Pine Ave.

LONG BEACH—Mattson

Music Co.
329 American Ave.
MONTROSE—Montrose
Radio Elec.
651 Honolulu
PASADENA—Radio Doc.
1531 E. Walnut St.
PASADENA—Thomas &
Summersville
41 N. Broadway
PUENTE—L. T. Hammersly
SANTA ANA—Hawley Sporting
Goods Co., 305 S. Sycamore
SANTA BARBARA—Dinsmore
Radio, Olive Mill Rd.
SAN DIEGO—S. H. Metcalf
225 Plaza
SANTA MONICA—A. E. Jackson
Music, 1447 Third St.
SANTA PAULA—Kit Carson
Batt. & Ign. Serv., 200 E. Main
VENTURA—Ventura Batt. &
Ign. Wks.
VENICE—Coast Elec. Co.
48 Market St.
WHITTIER—Whittier Hdwe. Co.
114 S. Greenleaf



Leo T. Cleary
Announcer

Venice, California—205 Meters

KFVD

500 WATTS
McWHINNIE ELECTRIC CO., Venice Ballroom,
Venice Calif. Phone 65959 or 65950
Station Manager, W. H. WHITE.

WEEK COMMENCING SUNDAY, FEBRUARY 6, 1927

SUNDAY, FEBRUARY 6—

10:00 to 12:00 midnight—Venice Ballroom Orchestra.

MONDAY, FEBRUARY 7—

8:30 to 9:00 p. m.—Harry Dinowitz, violinist; George Thiroux, ukulele artist.

9:00 to 10:00 p. m.—Melba Lyon, KFDV girl, and others.

10:00 to 12:00 p. m.—The Venice Ballroom Orchestra, followed by The Ship Cafe Frolic.

8:00 to 10:00 p. m.—Studio Program, featuring Dale Fulton, violinist; Lila Fulton, piano; Gee Thiroux, popular songster; Roy Davis, whistler; Fred Wesley, tenor, and others.

TUESDAY, FEBRUARY 8—

8:00 to 10:00 p. m.—Studio Program: Harry Dinowitz, violinist; Virginia Reese, Pianist; the Zerich Family Orchestra; Mr. Henning Banjo Orchestra.

WEDNESDAY, FEBRUARY 9—

8:00 to 10:00 p. m.—Jack Pope's Californians; Gee Thiroux, tenor; Elizabeth Swan, piano; Eddie Mills, 14 strings of Harmony; Bob Davis, baritone.

THURSDAY, FEBRUARY 10—

8:00 to 10:00 p. m.—Miss Usher, astrologer; The Ancient Trio, their combined ages, 243 years; Geraldine Gordon, female baritone; Art Forbes and his Black Cat Syncopaters.

FRIDAY, FEBRUARY 11—

8:00 to 10:00 p. m.—Claude Bond, piano and accordian; Morris Lenksy, Russian baritone; Dr. Delivante, pianist; Louis Lucich, Slavonian tenor; Bessie Fletcher, soprano, and the Californian Colonials Band.

SATURDAY, FEBRUARY 12—

8:00 to 10:00 p. m.—Eddie Mills' 14 Strings of Harmony; St. Elmo Russell, piano accordian. Program by the Bureau of Public Safety of the Los Angeles Police Department.

1:00 to 2:00 a. m.—Harry Judson Entertainers' Hour.

Program Published as Submitted by the Station.



Major Lawrence Mott
Announcer

Avalon, California—211.1 Meters

KFWO

THE ISLAND STATION
Power 250 Watts—Western Electric Equipment
"Katalina for Wonderful Outings"
MAJOR LAWRENCE MOTT, Owner-Operator
MISS FRANCES HEWITT, Studio & Program Dir.
"The Isle With a Smile"

WINTER SCHEDULES AT KFWO

The Mott Station at Catalina Island, California
(In effect week of Sept. 20th)

DAILY EXCEPT MONDAY—

12:30 to 1:30—Hotel St. Catherine Orchestra.

6:30 to 8:00—Hotel St. Catherine Orchestra.

DAILY EXCEPT MONDAY, THURSDAY AND SUNDAY—

6:00 to 6:30—Studio.

MONDAYS: Silent.

TUESDAYS: 5:00 to 6:00—Miss Hewitt's Golden Hour.
6:00 to 8:00—Studio.

WEDNESDAYS: 8:00 to 9:00—Studio Program.
9:00 to 12:00 Midnight—Overseas.

THURSDAYS: 6:00 to 6:30—Wrigley Chimes.
8:00 to 9:00—Studio Program.

FRIDAYS: 5:00 to 6:00—Miss Hewitt's Golden Hour.

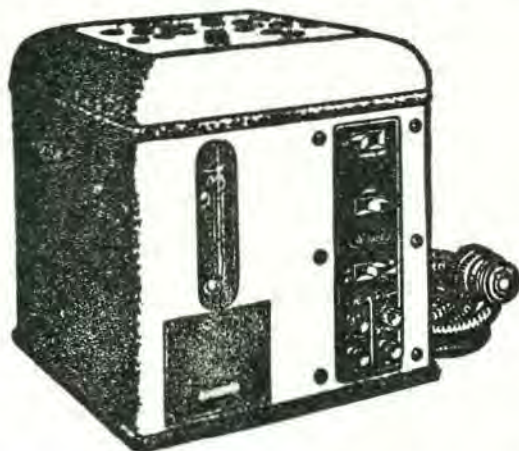
SATURDAYS: 3:30 to 4:30—Rebroadcast of KNX.
9:15 to 10:00—Studio.

SUNDAYS: 5:00 to 6:00—Miss Hewitt's Golden Hour.
6:00 to 6:30—Wrigley Chimes.
8:00 to 9:15—Lobby Concert.

Victor Electrola used during all programs.

Program Published as Submitted by the Station.

Plenty of "A" Power All the Time



The WILLARD Radio "A" Power Unit and "B" Battery Charger

"I'll make it my job to show someone what radio satisfaction really is. My two-speed charging keeps me in condition *all* the time. Colored balls indicate how much charge remains—and you simply throw a switch to turn on the charging current. I keep 'B' Batteries charged, too."

Ask about Willard "A" and "B" Radio Units, also about Willard Radio Batteries.

AT

WILLARD SERVICE STATIONS
OR YOUR NEAREST RADIO DEALER



"Hal" G. Nichols
Announcer

Long Beach, California—233 Meters

KFON

1280 KILOCYCLES—750 WATTS

NICHOLS & WARRINER, INC.

Studio 211 Jergins Trust Bldg. Phones 617-19, 614-60

Business Office, 212 Jergins Trust Bldg.

Phones: 617-19, 614-60

HAL G. NICHOLS, Manager and Studio Director

"Where Your Ship Comes In"

DAILY EXCEPT SUNDAY—

- 10:15 to 10:30 a. m.—"Devotion Period."
- 11:30 a. m. to 12:30 p. m.—Prizma Hour.
- 4:00 to 4:30 p. m.—Press-Telegram Late News.
- 5:00 to 6:00 p. m.—KFON Concert Orchestra.
- 6:00 to 6:50 p. m.—Organ Recital from State Theater
- 6:50 to 7:00 p. m.—Pacific Land Co.'s Travelogue.
- 9:00 to 10:00 p. m.—"The Hour De Luxe."

DAILY EXCEPT SUNDAY AND MONDAY—

- 2:30 to 4:00 p. m.—Municipal Band Concert.

WEEK COMMENCING SUNDAY, FEBRUARY 6, 1927

SUNDAY, FEBRUARY 6—

- 4:00 to 5:00 p. m.—Vesper hour.
- 5:00 to 6:55 p. m.—KFON Concert Orchestra.
- 7:00 to 7:45 p. m.—Parry's Cafe Orchestra.
- 7:45 to 9:00 p. m.—Services from First Church of Christ, Scientist.
- 9:00 to 12:00 p. m.—"Everybody's Night"—amateurs and professionals.

MONDAY, FEBRUARY 7—

- 7:00 to 8:00 p. m.—Thrifty Sandy program, sponsored by Citizens State Bank.
- 8:15 to 9:00 p. m.—"Weekly Song Cycle."
- 9:00 to 12:00 p. m.—"Kiwanis Frolic."

TUESDAY, FEBRUARY 8—

- 7:00 to 7:30 p. m.—Bluebird Hawaiian Trio.
- 7:30 to 8:00 p. m.—"Chat for Booklovers," presented by Hewitt's Book Store.
- 8:00 to 9:00 p. m.—Press-Telegram presenting Long Beach Municipal Band.
- 9:00 to 10:00 p. m.—"The Hour De Luxe."
- 10:00 to 11:00 p. m.—Majestic Ballroom Orchestra, by remote control.
- 11:00 to 12:00 p. m.—Capitol Theatre Organ Recital, by remote control.

WEDNESDAY, FEBRUARY 9—

- 7:00 to 9:00 p. m.—Pacific Coast Club Orchestra, by remote control.
- 9:00 to 10:00 p. m.—Truck Tire Service program.
- 10:00 to 11:00 p. m.—Pacific Coast Club Orchestra, by remote control.
- 11:00 to 12:00 p. m.—Capitol Theatre Organ Recital, by remote control.

THURSDAY, FEBRUARY 10—

- 8:00 to 9:00 p. m.—Press-Telegram presenting Long Beach Municipal Band.
- 9:00 to 10:00 p. m.—Shell Oil Company's Orchestra.
- 10:00 to 11:00 p. m.—Majestic Ballroom Orchestra, by remote control.
- 11:00 to 12:00 p. m.—Capitol Theatre Organ Recital, by remote control.

FRIDAY, FEBRUARY 11—

- 7:00 to 7:30 p. m.—Church of Christ, by Rev. Ernest Beam.
- 8:00 to 9:00 p. m.—Press-Telegram presenting the Long Beach Municipal Band.
- 9:00 to 10:00 p. m.—Gaskill Manufacturing Co. and Missman Radio Company program.
- 10:00 to 12:00 p. m.—Elks' Frolic—Lodge No. 888.

SATURDAY, FEBRUARY 12—

- 7:00 to 8:00 p. m.—Pacific Coast Club Orchestra, by remote control.
 - 8:00 to 9:00 p. m.—Press-Telegram presenting Long Beach Municipal Band.
 - 9:00 to 11:00 p. m.—Pacific Coast Club Orchestra, by remote control.
 - 11:00 to 12:00 p. m.—Capitol Theatre Organ Recital, by remote control.
- Program Published as Submitted by the Station.*

CROSLEY SPECIALISTS

PERFECT TONE, SELECTIVITY, STABILITY and DISTANCE

Are the results of our exact balancing. Have your Crosley improved at nominal cost. Satisfaction guaranteed. Open evenings.

CHILDS LABORATORY

1187 W. 24th St.

BEacon 7445

Los Angeles, Calif.

CERT-

ainly you
want an elec-
trical repro-
ducing phono-
graph with all
its charm.

HEAR real mu-
sic whenever you
wish, without regard
to season or hour. Mu-
sic to meet the mood
of the moment. Dance
music when you want it.
Enduring operas sung and
played by famous artists.
Hear the stirring swell of
great symphony orchestras. All
reproduced the new electrical
way on your **old phonograph!**

YOUR old phonograph, combined
with your radio set, can now be
played, and the results will amaze
you.

THIS is made possible by the development
of the **VOLUPHONE** electric phonograph repro-
ducer.

NO changing or re-wiring of your radio set. Sim-
ply connect two wires from **VOLUPHONE** to your
radio. **VOLUPHONE** replaces old arm on your pho-
nograph; that is all, connections remain permanent.
Does not interfere with your radio.

ASK your dealer to demonstrate **VOLUPHONE**. If he
hasn't it in stock, have him order at once. **VOLUPHONE**
is sold on a money-back agreement.

Try It!

**Hearing
is
Convincing**



*Sales Representatives for
Northern Cal. and Nevada:*
Western States Sales Co.
286 New Chronicle Bldg.
San Francisco, Cal.

*Sales Representative for
Pacific Northwest:*
C. E. GAY
449 Alder St.
Portland, Ore.

Manufactured by
Voluphone Mfg. Co.
133 Venice Boulevard
Los Angeles, Calif.
Phone WEStmore 5975





Tom Sexton
Announcer

San Diego, California—245.8 Meters

KFSD

1000 WATTS—1220 KILOCYCLES
AIRFAN RADIO CORPORATION
U. S. Grant Hotel, 326 Broadway, San Diego. Main 800:
RAYMUND V. MORRIS, President
TOM SEXTON, Announcer

"Kiss From San Diego"

DAILY—

6:30 to 7:00 p. m.—Nightly musical review.
7:00 to 8:00 p. m.—"Vesper Hour," Orthophonic recital.
DAILY EXCEPT SATURDAY—
6:15 to 6:30 p. m.—Ye Towne Topics.
DAILY EXCEPT SUNDAY—
10:00 to 11:00 p. m.—Harvey Ball and his U. S. Grant Hotel Orchestra.

WEEK COMMENCING SUNDAY, FEBRUARY 6, 1927

SUNDAY, FEBRUARY 6—

3:00 to 4:00 p. m.—Temple service of the Theosophical University at Point Loma, Calif.
8:00 to 9:00 p. m.—Mixed musical program.
9:00 to 10:00 p. m.—All Star Five and Gene Merritt, baritone.

MONDAY, FEBRUARY 7—

8:00 to 9:00 p. m.—First Unitarian Church, Howard B. Bard.
9:00 to 10:00 p. m.—Mixed musical program.

TUESDAY, FEBRUARY 8—

8:00 to 9:00 p. m.—Union Title Company "Classic Hour" program.
9:00 to 10:00 p. m.—R. V. Morris, Inc., Hawaiian music.

WEDNESDAY, FEBRUARY 9—

7:00 to 7:15 p. m.—Health and Beauty talks, by Dorothy Hays, Inc.
7:15 to 7:30 p. m.—Studio program.
7:30 to 8:30 p. m.—Concert program furnished by the Theosophical University
8:30 to 10:00 p. m.—K F S D request program.

THURSDAY, FEBRUARY 10—

8:00 to 9:00 p. m.—John P. Mills, Inc., Riviera Villas Orchestra.
9:00 to 10:00 p. m.—"Popular Hour" Orthophonic recital.

FRIDAY, FEBRUARY 11—

8:00 to 9:00 p. m.—P. M. Dairy Concert Orchestra, trio and songs.
9:00 to 10:00 p. m.—Mixed musical program.

SATURDAY, FEBRUARY 12—

8:00 to 9:00 p. m.—Mme. de Bauviere, "Franco-American" hour.
9:00 to 10:00 p. m.—Mixed musical program.
11:00 p. m. to 1:00 a. m.—K F S D Midnight Frolic. Fun for everyone.

Program Published as Submitted by the Station.

RADIO SERVICE A SPECIALTY

Batteries Recharged, Called For and Delivered
Our Work Is Guaranteed

VERMONT MUSIC CO.

DRexel 3229

826 S. Vermont

Open Till 10 P. M.



THE COMPLETE BOOTER AERIAL

Ready to install—6 Booters, 50 feet special aerial wire. Insulators, lead-in wire. It increases Volume with short aerial Selectivity.

Sent Postpaid \$2.50

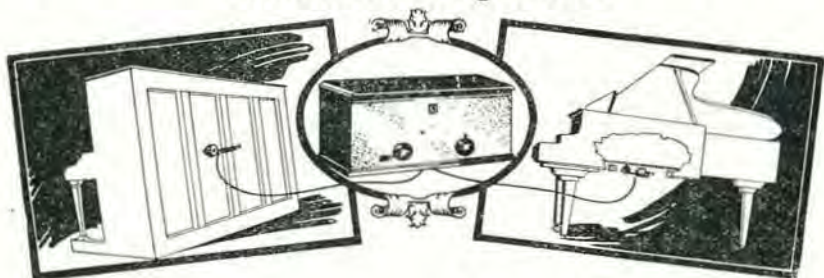
(A Set of Six Booters Alone, \$1.00)

The F. E. Wolters Corp.

Radio Division
324 N. San Pedro St. Los Angeles, Calif.

Make This Free Test

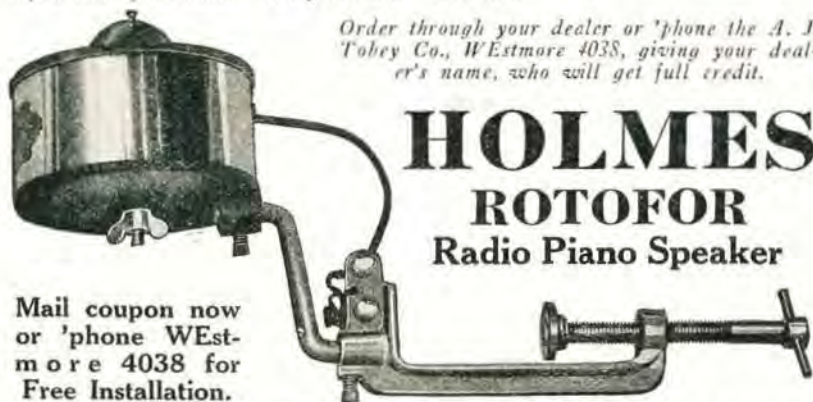
To Prove that Your Piano is a Marvelous
Radio Loud Speaker!



We'll send a factory expert to install this amazing new device on your piano. You will be amazed—thrilled—at the wonderful new tones developed from your radio. We guarantee

you'll be satisfied! And it doesn't interfere with or injure your piano. For the first time you will hear *every note* exactly as broadcasted. Make this test!

Order through your dealer or 'phone the A. J. Tobey Co., Westmore 4038, giving your dealer's name, who will get full credit.



HOLMES ROTOFOR Radio Piano Speaker

Mail coupon now
or 'phone WESt-
more 4038 for
Free Installation.

CLIP OUT AND MAIL TO

A. J. Tobey Co.

Fifteenth and Hope Streets, Los Angeles, Calif.

Send a factory expert to my address to install a Holmes Rotofor Radio Piano Speaker. I understand you guarantee satisfaction and price is \$28 installed.

Have expert call at (Date).....(Hour).....

NAME.....

Address.....

City.....State.....Your Phone.....

Dealer's Name.....Address.....



CURTIS PECK
Announcer

San Francisco, California—428.3 Meters

KPO

1000 WATTS—700 KILOCYCLES
HALE BROTHERS AND THE CHRONICLE
ALBERT J. HODGES, Technical Director
Phone Kearney 5777

"The Voice of San Francisco"

DAILY EXCEPT SUNDAY—

- 6:45, 7:15 and 7:45 a.m.—Daily health drill by Hugh Barrett Dobbs
- 10:10 a.m.—Household Hints.
- 10:30 a.m.—"Ye Towne Crier."
- 12:00 noon—Time signals and Scriptures reading.
- 12:30 to 1:00 p.m.—Clift Hotel Concert Trio.
- 1:00 to 2:00 p.m.—Rudy Seiger's Fairmont Hotel Orchestra
- 3:30 to 5:30 p.m.—Palace Hotel Concert Orchestra.
- 5:30 to 6:15 p.m.—Children's Hour.
- 6:15 to 6:30 p.m.—"Ye Towne Crier."
- 6:30 to 7:00 p.m.—States Restaurant Orchestra.
- 7:00 to 7:30 p.m.—Rudy Seiger's Fairmont Hotel Orchestra
- 7:30 to 8:00 p.m.—DX.

WEEK COMMENCING SUNDAY, FEBRUARY 6, 1927

SUNDAY, FEBRUARY 6—

- 9:45 to 10:45 a.m.—Undenominational and non-sectarian church service.
- 10:45a.m.—U. S. weather forecast and general information.
- 2:40 to 4:15 p.m.—Concert of the San Francisco Symphony Orchestra. Alfred Hertz, director, to be broadcast from the New Curran Theater by KPO and KFI.
- 6:00 to 6:30 p.m.—States Restaurant Orchestra, Waldemar Lind, director.
- 6:30 p.m.—"Ye Towne Crier," giving general information.
- 6:35 to 8:35 p.m.—Palace Hotel Concert Orchestra.
- 8:35 to 10:00 p.m.—Rudy Seiger's Fairmont Hotel Concert Orchestra.
- 10:00 to 12:00 p.m.—John Wolohan and his Californians.

MONDAY, FEBRUARY 7—

- 8:00 to 8:10 p.m.—Chamber of Commerce talk on "Industrial San Francisco."
- 8:10 to 8:25 p.m.—Book reviews by Harold O. Small.
- 8:25 to 9:00 p.m.—Bridge lesson No. 16.
- 9:00 to 10:00 p.m.—Studio program.
- 10:00 to 11:00 p.m.—Billy Long's Cabirians.
- 11:00 to 12:00 p.m.—KPO's Variety Hour.

TUESDAY, FEBRUARY 8—

- 8:00 to 9:00 p.m.—"Uda Waldrop Hour," featuring Uda Waldrop, KPO's official organist.
- 9:00 to 10:00 p.m.—Studio program.
- 10:00 to 11:00 p.m.—Palace Hotel Rose Room Dance Orchestra.
- 11:00 to 12:00 p.m.—John Wolohan and His Californians.

WEDNESDAY, FEBRUARY 9—

- 8:00 to 9:00 p.m.—Program by the Atwater Kent Artists, under the auspices of Ernest Ingold, Inc.
- 9:00 to 10:00 p.m.—States Restaurant Orchestra.
- 11:00 to 12:00 p.m.—Billy Long's Cabirians.

THURSDAY, FEBRUARY 10—

- 8:00 to 10:00 p.m.—Studio program.
- 10:00 to 11:00 p.m.—Palace Hotel Rose Room Dance Orchestra.
- 11:00 to 12:00 p.m.—John Wolohan and His Californians.

FRIDAY, FEBRUARY 11—

- 8:00 to 10:00 p.m.—Walter Krausgrill's Balconades Ballroom Orchestra.
- 10:00 to 11:00 p.m.—States Restaurant Orchestra, Waldemar Lind, director.
- 11:00 to 12:00 p.m.—John Wolohan and His Californians.

SATURDAY, FEBRUARY 12—

- 8:00 to 9:00 p.m.—Simultaneous broadcast by KPO and KFI of a program presented by the San Francisco branch of the manufacturers of White King and Mission Bell Soap.
- 9:00 to 10:00 p.m.—Palace Hotel Rose Room Dance Orchestra.
- 10:00 to 11:00 p.m.—Walter Krausgrill's Balconades Ballroom Orchestra.

Program Published as Submitted by the Station.

WILL SACRIFICE a \$150 a month, well-appointed, two-room office suite in the I. N. Van Nuys Building, Seventh and Spring Streets, Los Angeles, for \$100 per month. Lease has one year to run.

Inquire at

RADIO DOINGS

407 East Pico St.

Westmore 1401

Los Angeles, Calif.

NOW THE **SUPREME R-F 5** IS SOLD
FACTORY DIRECT TO YOU
5-Tube Console Complete



\$59

Built-in speaker, large tubes, 100 A. H. Rubber Case Battery even the inside aerial is included—nothing else to buy.

Selectivity :: Quality :: Distance

New Modified S. L. F. condensers allow ample separation of low wave lengths and gives absolute selectivity on all stations. Using Kellogg's laboratory grade transformers assures you of tone perfection, and for distance the utmost in sensitivity has been achieved through proper design of condensers and inductance.

Made of Finest Parts Obtainable

The Supreme—Made of the finest of material such as Kellogg, Yaxley, Carter, C. R. L., Benjamin, Bakelite coils.

Order Your Set Today

and you'll say, like everyone else that hears the Supreme, "That's the best receiver I ever heard—it's wonderful." It's simply not equalled for purity of tone or fidelity of reproduction. Remember every part is guaranteed to you—you take no chances.

THE PATTERSON FACTORY TO YOU SALES PLAN

puts a guaranteed \$155 console, 5-tube receiver in your home for cash at about \$35 less than the actual wholesale price. Volume production is the answer.

Patterson Radio Manufacturing Co.

Established 1921

239 S. Los Angeles St.—VA. 8139

Los Angeles, Calif.



"MAC"

San Francisco, California—268 Meters

KFRC

Owned and Operated by Don Lee,
California Distributor for Cadillac Motor Car.
50 WATTS—1120 KILOCYCLES
LANSING TEVIS, Manager
HARRISON HOLLIWAY, Station Master
"Keep Forever Radiating Cheer"

DAILY EXCEPT SATURDAY AND SUNDAY—

10:00 to 11:00 a. m.—Sherman Clay & Co. concert.

11:00 a. m. to 12:00 noon—Household Hints.

DAILY EXCEPT SUNDAY—

12:00 to 2:00 p. m.—Eddie Harkness' Concert Orchestra.

4:00 to 5:30 p. m.—Eddie Harkness' Concert Orchestra.

5:30 to 6:30 p. m.—"Mac" and his Gang.

6:30 p. m.—Stage and Screen.

WEEK COMMENCING SUNDAY, FEBRUARY 6, 1927

SUNDAY, FEBRUARY 6—

5:30 to 6:30 p. m.—"Twilight Hour."

6:30 to 8:30 p. m.—Mark Hopkins Concert Orchestra.

MONDAY, FEBRUARY 7—

6:30 to 7:00 p. m.—Jo Mendel's Pep Band of the Lido Cafe.

7:05 to 7:30 p. m.—KFRC Hawaiians, sponsored by Yale Electric Corporation.

8:00 to 9:00 p. m.—Blue Monday Jamboree.

9:00 to 10:00 p. m.—Goodrich Silvertown Cord Orchestra.

10:00 to 12:00 p. m.—Eddie Harkness' Mark Hopkins Dance Orchestra.

TUESDAY, FEBRUARY 8—

6:30 to 7:00 p. m.—Organ recital, sponsored by Yale Electric Corporation.

8:00 to 8:30 p. m.—KFRC Radio Movie Club.

9:30 to 12:00 p. m.—Eddie Harkness' Mark Hopkins Dance Orchestra.

WEDNESDAY, FEBRUARY 9—

6:30 to 7:00 p. m.—Program by Western Motors Co.

7:00 to 7:30 p. m.—"Puss" Donahoo and his orchestra.

8:00 to 10:00 p. m.—KFRC Little Symphony Orchestra.

10:00 to 12:00 p. m.—Eddie Harkness' Mark Hopkins Dance Orchestra.

THURSDAY, FEBRUARY 10—

6:30 to 7:00 p. m.—Yale Electric Corporation program.

7:00 to 7:30 p. m.—Popular Trio.

8:00 to 9:00 p. m.—Program sponsored by Mona Motor Oil Co.

9:00 to 10:00 p. m.—Organ recital.

10:00 to 12:00 p. m.—Eddie Harkness' Mark Hopkins Dance Orchestra.

FRIDAY, FEBRUARY 11—

6:30 to 7:00 p. m.—Bill Hawley and "Puss" Donahoo, comedy song team.

7:00 to 7:30 p. m.—Yale Electric Corporation program.

8:00 to 10:00 p. m.—KFRC Little Symphony.

10:00 to 12:00 p. m.—Eddie Harkness' Mark Hopkins Dance Orchestra.

SATURDAY, FEBRUARY 12—

6:30 to 7:00 p. m.—Yale Electric Corporation program.

7:00 to 7:30 p. m.—Popular program.

8:00 p. m. to 1:00 a. m.—Eddie Harkness' Mark Hopkins Dance Orchestra.



Edward J. Ludes
Announcer

San Francisco, Calif.—399.8 Meters

KYA

1000 WATTS—750 KILOCYCLES

Headquarters at the Clift Hotel

CLAIR MORRISON, Mgr. EDWARD LUTES, Announcer

DAILY EXCEPT SUNDAY—

12:30 to 2:00 p. m.—Clift Hotel Concert Trio.

6:30 to 7:30 p. m.—Clift Hotel Concert Trio.

10:00 to 11:00 p. m.—Clift Hotel Dance Orchestra.

MONDAY, WEDNESDAY, FRIDAY—

8:00 to 10:00 p. m.—Studio program

SUNDAY, FEBRUARY 6—

11:00 a. m.—Services of Central Methodist Episcopal Church.

7:30 p. m.—Services of the Central Methodist Episcopal Church.

MONDAY, FEBRUARY 7—

8:00 to 10:00 p. m.—Popular Night in the Studio.

WEDNESDAY, FEBRUARY 9—

8:00 to 9:00 p. m.—Studio program.

9:00 to 10:00 p. m.—The Emydian Choir, under the direction of Grant Austin.

FRIDAY, FEBRUARY 11—

8:00 to 10:00 p. m.—Studio program, under the direction of E. Harold Dana.

SATURDAY, FEBRUARY 12—

11:00 to 12:00 p. m.—Clift Hotel Dance Orchestra.

Program Published as Submitted by the Station.

Add the new Balkite Combination



U. S. Patent, Oct. 12, 1926

to your radio set now

with your "A" battery it supplies all radio power
automatically from the light socket

Now you can make your radio set a light socket receiver merely by adding the new Balkite Combination Radio Power Unit. Once connected to your "A" battery and set and plugged into the light socket, it *supplies automatic power to both circuits*. You need not even turn it off and on, for it is controlled by the filament switch already on your set and is entirely automatic in operation.

Balkite Combination can be installed in a few minutes, either near the set or in a remote location. It has no tubes, nothing to replace or renew, is a perma-

nent piece of equipment, and is built to conform with the standards of the Underwriters' Laboratories. It is noiseless in operation. It will serve any set now using either 4 or 6-volt "A" batteries and requiring up to 30 milliamperes at 135 volts of "B" current—any set of 8 tubes or less, including power tubes.

Add Balkite Combination to your radio set now and know the pleasure of owning a receiver always ready to operate at full power for years to come. Price \$59.50 [\$83 in Canada.] Ask your dealer.

Manufactured by FANSTEEL PRODUCTS CO., Inc., North Chicago, Ill.

District Sales Representatives—A. S. Lindstrom Company, San Francisco, 274 Brannan Street—Los Angeles, 324 North San Pedro Street—Portland, 146½ North 10th Street—Seattle, 95 Connecticut Street—Salt Lake City, 221 South West Temple Street—Denver, Jack L. Hirsch Company, 1641 Stout Street.

FANSTEEL
Balkite *Radio*
Power Units



Howard I. Milholland
Announcer

Oakland, California—361.2 Meters

KGO

4000 WATTS—830 KILOCYCLES
PACIFIC COAST STATION, GENERAL ELECTRIC CO.
Phone Fruitvale 5980

DAILY EXCEPT SUNDAY—

- 11:30 a. m. to 1:00 p. m.—Hotel Leamington concert.
1:30 and 6:00 p. m.—Stock and weather reports. Baseball scores
6:00 to 6:55 p. m.—Bem's Little Symphony Orchestra
6:55 to 7:30 p. m.—Weather and stock reports.

WEEK COMMENCING SUNDAY, FEBRUARY 6, 1927

SUNDAY, FEBRUARY 6—

- 11:00 a. m.—First Congregational Church service.
2:40 p. m.—San Francisco Symphony Orchestra concert.
4:00 p. m.—Vesper service, Grace Cathedral.
3:30 to 7:30 p. m.—Concert by Bem's Little Symphony Orchestra.
7:30 p. m.—Weather Bureau report.
7:35 p. m.—First Congregational Church service, San Francisco.
9:00 to 10:00 p. m.—Concert by Bem's Little Symphony Orchestra.

MONDAY, FEBRUARY 7—

- 4:00 to 5:00 p. m.—California Federation of Women's Clubs.
5:30 to 6:00 p. m.—KGO Kiddies' Klub.
Silent Night.

TUESDAY, FEBRUARY 8—

- 5:00 p. m.—Lectures by Dr. Virgil E. Dickson.
8:00 to 9:00 p. m.—The Pilgrims. Eveready program by National Carbon Company.
9:00 p. m.—Joseph Henry Jackson, "Chats About New Books."
9:20 p. m.—Surprise broadcast.

WEDNESDAY, FEBRUARY 9—

- 5:30 p. m.—"For Instance," by General Jackson.
8:00 p. m.—Farm program, co-operating with U. S. Dept. of Agriculture. Music by W. O. W. Male Trio.
9:15 p. m.—Hotel Leamington, Alameda Music County Teachers' Association, reception to Charles Cadman.

THURSDAY, FEBRUARY 10—

- 5:00 to 6:00 p. m.—George W. Ludlow, "Friend to Boys."
8:00 to 9:15 p. m.—Program by Arion Trio; Josephine Holub, violin; Margaret Avery, cello; Joyce Holloway Barthelson, piano; assisted by Easton Kent, tenor.
9:15 p. m. to 12:00 midnight—John Philpott's Midshipmen, Paradise Ball Room.

FRIDAY, FEBRUARY 11—

- 8:00 p. m.—Studio program.

SATURDAY, FEBRUARY 12—

- 8:00 p. m.—"Weekly Sport Review," by Al Santoro.
8:15 to 9:15 p. m.—Program from Hotel Leamington, Oakland.
9:15 p. m. to 1:00 a. m.—Dance music, Wilt Gunzendorf's Hotel Whitcomb Band.
Program Published as Submitted by the Station.



Chas. E. Gabrielle, Jr.
Announcer

Oakland, California—508.2 Meters

KLX

500 WATTS—508.2 Meters
OAKLAND TRIBUNE RADIOPHONE
Phone, Lakeside 6015

"Oakland, Where Rail and Water Meet"

DAILY EXCEPT SUNDAY—

- 3:00 p. m.—Baseball.
7:00 to 7:30 p. m.—News broadcast.

WEEK COMMENCING MONDAY, FEBRUARY 7, 1927

MONDAY, FEBRUARY 7—

- 8:00 to 9:00 p. m.—Studio program, courtesy of the Piggly Wiggly Company.
9:00 to 10:00 p. m.—Weekly meeting of the Lake Merritt Ducks.

WEDNESDAY, FEBRUARY 9—

- 6:30 to 7:00 p. m.—Athens Athletic Club Orchestra.
8:00 to 9:00 p. m.—Educational program.
9:00 to 10:00 p. m.—Special program.

FRIDAY, FEBRUARY 11—

- 8:00 to 9:00 p. m.—Studio program. Valentine party for the children, broadcast by the Tribune Kiddies.
9:00 to 10:30 p. m.—Athens Athletic Club Orchestra.

COAST COUPLER

Long Wave Radio Frequency

TRANSFORMERS

They are new—powerful—the latest output of the Coast Coupler Co.—possessing those four tangible points sought by every fan that insists on the best in Radio.

GREATER

AMPLIFICATION
SELECTIVITY
TONE QUALITY
DISTANCE

There Are Four of Them to a Set

They Are Absolutely Matched and Peaked at One Frequency

Sold under an absolute guarantee. Take a set home, put them in your receiver according to inclosed instructions. Try them five days. If you are not satisfied that they make the BEST Radio Set you ever heard, then return them where they were purchased and the full price will be refunded. Is that fair enough?

**They Are Quality All Through, and the Price Is, at Your Dealers, \$40.00 Per Set of Four—
and Worth Much More**

Manufactured by

COAST COUPLER CO.

• ONLY THE BEST IN RADIO

414 Waite Court

OR DIRECT
On receipt of
check or money
order, drilled and
engraved Formica
Panel, \$7.00.

Long Beach, Calif.

KRE**Berkeley, California—256 Meters**

100 WATTS—1170 KILOCYCLES

BERKELEY DAILY GAZETTE

Broadcasting Station and Studio, Hotel Claremont

Phone, Berkeley 9300

DOROTHY LENROOT BLACK, Director

DAILY EXCEPT SUNDAY—

11:15 a. m.—Physical exercises.

5:30 p. m.—Current news.

WEEK COMMENCING SUNDAY, FEBRUARY 6, 1927

SUNDAY, FEBRUARY 6—

10:00 to 11:00 a. m.—Church service under the direction of Rev. James Asa White.

MONDAY, FEBRUARY 7—

8:00 to 10:00 p. m.—KRE Players will present KRE Kapers.

TUESDAY, FEBRUARY 8—

9:00 to 10:00 p. m.—Studio program. Y. M. C. A. Thrift Talk.

THURSDAY, FEBRUARY 10—

8:00 to 10:00 p. m.—Studio program.

Did You Get Your 1927 RADIO CALL AND LOG BOOK?

They are going fast. Third reprint just off the press.

Price 25c

News Stands, Radio Dealers or
RADIO DOINGS

407 East Pico Street

Los Angeles, Calif.

Distance and Selectivity ON YOUR SUPER-HETERODYNE

You Get Both With a

RADIO POWER BOX

Results Guaranteed

Use this Radio Power Box one week on your Radiola Semi-portable, 24, 26 and 28, and other types of super-heterodynes, then if you are not satisfied, return box and the purchase price will be refunded.

**SOLD DIRECT TO SET OWNERS
ONLY**

Immediate Attention Given Mail Orders

THE SANTEE CO.

216 Calo Building
443 S. San Pedro St.

Telephone TUCKER 4951
Los Angeles, Calif.



MODEL No. 24

This model built for Radiola and other types of Super-Heterodynes.

Now \$6.00



STEPHEN I. GAYLORD
Announcer

Portland, Oregon—491.5 Meters

KGW

1000 WATTS—810 KILOCYCLES

THE MORNING OREGONIAN

"Keep Growing Wiser"

DAILY EXCEPT SUNDAY—

- 7:15 a. m.—Setting up exercise.
 9:45 to 10:00 a. m.—Women's health exercises.
 10:00 to 11:30 a. m.—Town Crier, weather reports, news items.
 12:30 to 1:30 p. m.—Noon concert.
 6:00 to 7:00 p. m.—Dinner Concert.
 7:30 to 7:45 p. m.—Weather and market reports.

WEEK COMMENCING SUNDAY, FEBRUARY 6, 1927

SUNDAY, FEBRUARY 6—

- 10:55 to 12:30 p. m.—Morning services from the St. Stephens Pro-Cathedral.
 4:00 to 5:00 p. m.—KGW Salon Orchestra.
 6:00 to 7:00 p. m.—Concert Orchestra, directed by Geo. Rogovoy, from KOMO, through KGW and KHQ.
 7:30 to 9:00 p. m.—Evening services from the Hinson Memorial Baptist Church.
 9:00 to 10:00 p. m.—Concert by the Chevrolet Little Symphony Orchestra.

MONDAY, FEBRUARY 7—

- 7:00 to 7:30 p. m.—Children's program.
 8:00 to 10:00 p. m.—Vaudeville entertainment.
 10:00 to 1:00 p. m.—Dance music by Cole McElroy's orchestra.

TUESDAY, FEBRUARY 8—

- 2:00 to 3:00 p. m.—Women's Matinee.
 7:00 to 7:30 p. m.—Children's program, broadcast simultaneously with KFOA and KHQ.
 8:00 to 10:00 p. m.—Educational program.
 10:00 to 12:00 p. m.—Dance music, featuring Herman Kenin and his orchestra.

WEDNESDAY, FEBRUARY 9—

- 7:00 to 7:15 p. m.—Utility service.
 7:30 to 8:00 p. m.—Albers Poultry School.
 8:00 to 9:00 p. m.—Concert, presented by The Western Auto Supply Company.
 8:00 to 9:00 p. m.—Concert, presented by The Western Auto Supply Company.
 9:00 to 10:00 p. m.—Concert, presented by Maxwell House Coffee Company, broadcast simultaneously with KFOA and KHQ.

THURSDAY, FEBRUARY 10—

- 7:45 to 8:00 p. m.—Lecture, given under the auspices of the Catholic Truth Society of Oregon.
 8:00 to 10:00 p. m.—Vaudeville entertainment.

FRIDAY, FEBRUARY 11—

- 2:00 to 3:00 p. m.—Women's Matinee.
 7:00 to 7:30 p. m.—Children's program.
 7:30 to 8:00 p. m.—Weekly meeting of the KGW Movie Club.
 8:00 to 9:00 p. m.—Concert Orchestra, courtesy Los Angeles Soap Company.
 9:00 to 10:30 p. m.—Dance music by Cole McElroy's Orchestra.
 10:30 to 12:00 p. m.—Weekly frolic of the Keep Growing Wiser Order of Hoot Owls, broadcast with KMO, KFOA, KHQ, from KGW.

SATURDAY, FEBRUARY 12—

- 7:00 to 7:30 p. m.—Children's program, broadcasting from KFOA, through KGW and KHQ.
 8:00 to 8:30 p. m.—Concert by Pacific University Glee Club.
 9:00 to 10:00 p. m.—Concert, Calumet Instrumental Quartet.
 10:00 to 12:00 p. m.—Dance music.

Program Published as Submitted by the Station.

STANDARD RADIO CO.

417 West Pico Street, Los Angeles, Calif.

FADA—ATWATER-KENT AND WESTERN ELECTRIC DEALER

We Carry a Complete Line

Open Model Atwater-Kent Wave Length Cut Down to 200 Meters

We Are Also Making a Specialty of Sharpening Tuning in Any Radio Set

2-Tube Harkness Changed to 3-Tube, Guaranteed Perfect Tune-Out on Local Stations.

Telephone WEstmore 1560

Open Evenings Until 9 o'clock



LUTHER J. JENSEN
Announcer

Seattle, Washington—454.3 Meters

KFOA

1000 WATTS—660 KILOCYCLES

Owned and Operated by
RHODES DEPARTMENT STORE

DAILY EXCEPT SUNDAY—

4:30 to 5:15 p. m.—The Times "Afternoons at Home."

6:25 to 4:45 p. m.—Sports and Amusements.

DAILY EXCEPT SUNDAY AND MONDAY—

2:30 to 4:30 p. m.—Seattle Radio Trade Assn. Concert Orchestra.

WEEK COMMENCING MONDAY, FEBRUARY 7, 1927

MONDAY, FEBRUARY 7—

6:45 to 7:15 p. m.—KFOA Radio Movie Club.

7:45 to 8:15 p. m.—Musical program. Sound Ferry Lines Twins.

8:15 to 8:30 p. m.—Industrial news by Manufacturers Association of Washington.

8:30 to 10:00 p. m.—The Times presents a studio program.

TUESDAY, FEBRUARY 8—

12:30 to 1:30 p. m.—Kiwanis Club luncheon program from the Olympic Hotel.

2:00 to 2:30 p. m.—Homemakers' and Shoppers' Bureau.

6:45 to 7:00 p. m.—Talk under auspices American Institute of Banking.

7:00 to 7:30 p. m.—Children's Program, simultaneously broadcast by KFOA, KGW, KHQ.

7:30 to 8:00 p. m.—Musical program.

8:00 to 8:30 p. m.—Flora Co., Inc., presents Eva Gonella and Grace Wilson.

8:30 to 9:30 p. m.—Cheasty's, Inc., presents Cheasty's Quartet.

9:30 to 10:30 p. m.—Mona Motor Oil Co. presents Oil Cans.

WEDNESDAY, FEBRUARY 9—

12:30 to 1:30 p. m.—Rotary Club luncheon program from the Olympic Hotel.

2:00 to 2:30 p. m.—Homemakers' and Shoppers' Bureau.

9:00 to 10:00 p. m.—Maxwell House Coffee Co. program from KGW through KFOA and KHQ.

THURSDAY, FEBRUARY 10—

12:30 to 1:30 p. m.—Shrine Club luncheon program from the Chamber of Commerce Bldg.

2:00 to 2:30 p. m.—Homemakers' and Shoppers' Bureau.

7:45 to 8:15 p. m.—Doc Proelss' "Cross-eyed Trio."

8:15 to 8:30 p. m.—Automobile Club of Washington.

8:30 to 9:30 p. m.—Cheasty's, Inc., Philippine String Band.

9:30 to 10:30 p. m.—Calpet Gasoline String Orchestra and the Harmony Girls.

FRIDAY, FEBRUARY 11—

12:00 to 1:30 p. m.—Members Council luncheon program from Chamber of Commerce Bldg.

2:00 to 2:30 p. m.—Homemakers' and Shoppers' Bureau.

6:45 to 8:15 p. m.—Sherman Clay & Co. studio program.

8:15 to 8:30 p. m.—"Bookologue" by Lowman & Hanford Co.

8:30 to 9:00 p. m.—Radio Bridge game by the Seattle Times.

9:00 to 10:30 p. m.—The Atwater Kent Dealers Novelty Orchestra.

10:30 to 12:00 midnight—"Hoot Owls" simultaneous broadcast from KGW through KFOA and KHQ.

SATURDAY, FEBRUARY 12—

2:00 to 2:30 p. m.—Homemakers' and Shoppers' Bureau.

6:45 to 7:00 p. m.—"Travelogue" by Harry W. Kirwin.

7:00 to 7:30 p. m.—Children's program, simultaneous broadcast KFOA, KGW and KHQ.

7:30 to 8:30 p. m.—Stewart-Warner Old Fashioned Dance Orchestra.

8:30 to 9:30 p. m.—Cheasty's, Inc., Musical Program.

"SUPER-HET" OWNERS!

Do you fight the elements, or do you get real reception?

With our system of construction and

TRANSTROM INTERSTAGE TRANSFORMERS

We Are Getting Unbelievable Results at Fifth and Broadway!

CALIBRATING, REPAIRING AND ACCESSORIES FOR ALL SETS

SIERRA RADIO LABORATORIES

318 W. Fifth St.

Los Angeles, Calif.

VAndike 6464

KOMO—Seattle, Washington—305.9 Meters

1000 WATTS

HOME SAVINGS BLDG., SEATTLE, WASH.

DAILY EXCEPT SUNDAY—

9:30 to 9:40 a. m.—Inspirational Service.
 9:40 to 10:00 a. m.—Road Bulletin.
 7:45 to 8:00 p. m.—"Ye Towne Topics."

WEEK COMMENCING MONDAY, FEBRUARY 7, 1927**MONDAY, FEBRUARY 7—**

6:15 to 7:45 p. m.—Schwabacher Bros. & Company, Inc., Dinner Hour Concert.

TUESDAY, FEBRUARY 8—

12:00 noon—"Noon Farm Flashes."

12:30 to 1:30 p. m.—Seattle City-Wide Democratic Women's Club.

6:15 to 7:45 p. m.—Schwabacher Bros. & Company, Inc., Dinner Hour Concert.

8:00 to 9:00 p. m.—Bible Lecture.

9:00 to 9:30 p. m.—Popular songs and piano solos.

WEDNESDAY, FEBRUARY 9—

10:00 to 10:20 a. m.—Vogue La Rose Beauty Parlor.

12:30 to 1:30 p. m.—Organ Recital.

6:00 to 7:00 p. m.—Herbert Preeg's Concert Orchestra.

8:45 to 9:00 p. m.—National Farm Radio Council.

THURSDAY, FEBRUARY 10—

12:30 to 1:30 p. m.—Young Men's Business Club.

6:15 to 7:45 p. m.—Schwabacher Bros. & Company, Inc., Dinner Hour Concert.

8:00 to 8:30 p. m.—Albers Milling Company.

10:00 to 10:20 p. m.—Vogue La Rose Beauty Parlor talk.

FRIDAY, FEBRUARY 11—

12:30 to 1:30 p. m.—Organ Recital.

6:00 to 7:00 p. m.—Herbert Preeg's Concert Orchestra.

6:15 to 7:45 p. m.—Schwabacher Bros. & Company, Inc., Dinner Hour Concert.

8:00 to 8:30 p. m.—Pine Tree Milking Machine Co. half hour.

9:00 to 10:00 p. m.—Western Giant Cord Orchestra.

SATURDAY, FEBRUARY 12—

12:30 to 1:30 p. m.—King County Democratic Club.

6:15 to 7:45 p. m.—Schwabacher Bros. & Company, Inc., Dinner Hour Concert.

Your **ELIMINATE
STORAGE "A"
BATTERY**

BLAX A.C. POLARIZER

Thousands Throughout the World
Are Getting Satisfaction from this
Little "Grief Saver"

Be Sure its a **BLAX**

Blax Polarizers Are the Standard

It's the Original—Beware of Imitations

USE BLAX HEAVY DUTY TRANSFORMER

Especially Designed and Wound
Furnishes "A" Current for Radio Sets
**REQUIRED FOR 3 TUBES OR MORE
IMPROVES 2 TUBES**

Equip Your Set Now

Blax Polarizer (Special).....75c
 Blax Polarizer (Tested in set).....\$1.00
 Blax Heavy Duty Transformer.....\$2.00
 Blax 3-Tube Blue Print.....25c
 If Your Dealer Can't Supply You, Send Now.

BLACK BROS., INC.

918 Black Bldg.

Los Angeles

McKinley "B" Power Unit

**A Perfect "B" Eliminator Giving a
Maximum and Constant
Power Supply**

Absolutely no hum on local or distant
reception.

Designed for the D-X fan

100-Volt Units.....\$20.00

100-Volt Heavy Duty.....25.00

150-Volt.....35.00

Satisfactory Service Has Made Our
Business Grow

Phone York 1628 for Demonstration

McKinley Radio Mfg. Co.

10905 S. Main St.

Los Angeles

Excellent Dealer Proposition



Freeman H. Talbot
Announcer

Denver, Colorado—322.4 Meters

KOA

930 KILOCYCLES—5000 WATTS
GENERAL ELECTRIC COMPANY
Pacific Standard Time
"Rocky Mountain Broadcasting Station"

DAILY EXCEPT SATURDAY AND SUNDAY—

10:45 a. m.—Weather, Stock and Produce Reports

11:15 a. m.—Organ recital.

5:00 p. m.—Stock and Market Reports

7:00 p. m.—Musical Program.

DAILY EXCEPT SUNDAY—

11:15 a. m.—Organ recital.

WEEK COMMENCING SUNDAY, FEBRUARY 6, 1927

SUNDAY, FEBRUARY 6—

9:30 a. m.—Solemn High mass, Immaculate Conception Cathedral.

5:30 p. m.—Organ recital from Immaculate Conception Cathedral.

6:45 p. m.—Service of Immaculate Conception Cathedral.

MONDAY, FEBRUARY 7—

6:30 p. m.—Children's hour.

7:15 p. m.—Studio program presented by the Denver Post. "The Ghost Town of Buckskin Joe Comes to Life." A dramatization of the Old West.

TUESDAY, FEBRUARY 8—

2:30 p. m.—Housewives' matinee.

6:30 p. m.—Farm Question Box.

8:00 p. m.—Radio instruction in auction bridge.

WEDNESDAY, FEBRUARY 9—

6:30 p. m.—Wynken, Blynken and Nod time.

7:15 p. m.—Studio program presented by the Civic and Commercial Association of Littleton, Colo.

THURSDAY, FEBRUARY 10—

2:30 p. m.—Housewives' matinee.

3:30 p. m.—Culinary hints, Mrs. Clara Hoover. Silent night.

FRIDAY, FEBRUARY 11—

12:00 noon—Organ recital, Aladdin Theater, Denver. Viola K. Lee, organist.

3:30 p. m.—Question Box.

6:00 p. m.—"Aggie Kickoffs," Extension service.

6:30 p. m.—Preview of International Sunday School lesson.

7:00 p. m.—Instrumental program.

7:15 p. m.—Studio program.

SATURDAY, FEBRUARY 12—

9:30 p. m.—Dance program, Scheuerman's Colorado Orchestra, from Colorado Club, Denver.
Program Published as Submitted by the Station.



Keep Your Good Old
Table Horn and Put It
in One of These

CONSOLE CABINETS

For Your Radio

HIGH BOYS—LOW BOYS
LONG BOYS—SHORT BOYS

(Or will make to your order)

MADE RIGHT—RIGHT HERE
RIGHT PRICE

RADIO CABINET SHOP

UNiv. 5563

4353 S. Vermont

Los Angeles, Calif.

YOUR NEIGHBORHOOD DEALER

FEDERAL AND RADIOLA



Two Ways of Saying
"Radio At Its Best"

HETZEL RADIO
SERVICE

"Hetzel Radios Excel"

8303 Santa Monica Blvd.
Phone GRanite 5874

RADIOLA

S
A
L
E
S



S
E
R
V
I
C
E

SCHRADER-ROSS

3206 West Washington Blvd.
Open Evenings Empire 2968

ADVERTISING SERVICE

Mr. RADIO DEALER!

Here Is Your
Space For Next
Week — Our New
1/6th Page, Designed
For Your Needs

For Rates Phone
TUcker 8468

AERIAL EQUIPMENT



MAKE YOUR
AERIAL 100%
EFFICIENT

By installing it with Standard Adjustable Aerial Bases, as instructed. Fits any pitch of roof. Will not blow down. Your aerial will be attractive in place of unsightly.

Price \$2.00

Send for Descriptive Literature
STANDARD AERIAL BASE
COMPANY

P. O. Box 537 Pomona, Calif.

TO JOBBERS AND MANUFACTURERS

Spaulding Fibre, Spaulding Bakelite, Hope
Talking Tape, Irvington Spaghetti and Wire

Factory Stocks and Cutting Equipment—Ample Stocks in Los Angeles
Panels, Washers, Discs, Special Shapes

CLAPP & LaMOREE

310 E. Fourth St., Los Angeles. MAin 4402

LOS ANGELES

SAN FRANCISCO

PORTLAND

C F A C—Calgary, Canada—434.8 Meters

THE CALGARY HERALD

DAIY EXCEPT SUNDAY—

12:15 p. m.—United Grain Growers Elevator prices.

12:30 p. m.—G. F. Tull and Arden, Ltd., Winnipeg and Chicago wheat prices; oil and stock prices and live stock reports.

WEEK COMMENCING MONDAY, FEBRUARY 7, 1927

MONDAY, FEBRUARY 7—

8:30 p. m.—C. N. R. program. Dance program by Jack Rushton's Serenaders.

11:00 p. m.—Special test program.

TUESDAY, FEBRUARY 8—

5:00 to 6:00 p. m.—Dinner program.

WEDNESDAY, FEBRUARY 9—

2:00 p. m.—Address by Victorian Order of Nurses

6:45 to 7:45 p. m.—Aeolian Instrumental Quartet. Leader, C. A. Davis.

THURSDAY, FEBRUARY 10—

6:00 p. m.—Bedtime Story by Aunt Edith.

8:00 p. m.—Radio Auction Bridge.

8:30 p. m.—C. N. R. program by the Canadian National Railway's Orchestra, under the direction of Gladys Webb Foster.

FRIDAY, FEBRUARY 11—

5:45 to 6:45 p. m.—C. F. A. C.'s Concert Trio under leadership of Gladys Webb Foster.

SATURDAY, FEBRUARY 12—

10:45 a. m.—Old Country football results.

SUNDAY, FEBRUARY 13—

10:00 a. m.—Central United Church, Rev. H. W. Avison.

A M B — Tia Juana, Mexico — 300 Meters

100 WATTS

WILLIAM G. MEE, Program Manager

"CHICO" LLANOS, Announcer

CALVERT APPLGATE, Technician

El Correo Del Norte Bldg., Tia Juana, B. C. Mexico.

Phone Tia Juana 26

DAILY EXCEPT SUNDAY—

12:00 to 2:00 p. m.—Blue Fox Cafe, by remote control, featuring Bobby Maytorena, and Blue Fox Orchestra.

2:00 to 2:30 p. m.—George Warren's Midnight Follies Band, by remote control, featuring Pat O'Hara.

2:30 to 2:45 p. m.—Studio Program given by Vick's Cafe.

2:45 to 3:00 p. m.—Program from Fior di Italia Cafe by remote control.

3:00 to 3:30 p. m.—De Luxe Cafe Hawaiian Melody Four, by remote control.

3:30 to 4:00 p. m.—Studio Program.

4:00 to 5:00 p. m.—Kentucky Barrel House Orchestra by remote control.

5:00 to 5:30 p. m.—Manuel Guerra and his California Cafe Dance Orchestra by remote control.

TUESDAY AND FRIDAY—

7:00 to 9:00 p. m.—Studio Program, featuring Antonio Yanes, violinist, and Gabriel Gomez Plancarte, pianist.

9:00 to 10:00 p. m.—Studio program featuring talent from the various Tijuana cafes.

**Y
O
U
R**

Transmitting and receiving equipment designed and constructed.

Radio and technical problems correctly solved.

Questions answered accurately.

Receiver and all other equipment carefully tested, repaired and calibrated.

**COMPLETE WORKING DRAWINGS OF AMERICA'S FINEST RECEIVER.
ADJUSTABLE OUTPUT TRANSFORMERS THAT MATCH TUBES
AND GOOD SPEAKERS FOR HIGH QUALITY.**

Transformers and Choke Coils to any requirement. Complete Speech Amplifiers and Control Panels for broadcast stations and public address systems or any parts for same. Punchings and design data for any Core, such equipment including that for tungar battery charging transformers of any capacity and voltage. High grade Resistance Wire, special alloy steels.

**FINEST EQUIPPED LABORATORY ON THE COAST
COME AND INSPECT IT.**

Technical Laboratory of N. E. Brown

Tel. THornwal 0270.

6805 S. Western Ave., Los Angeles

**Better In
Every Way**



**The Advance
fixed
CRYSTAL
DETECTOR**

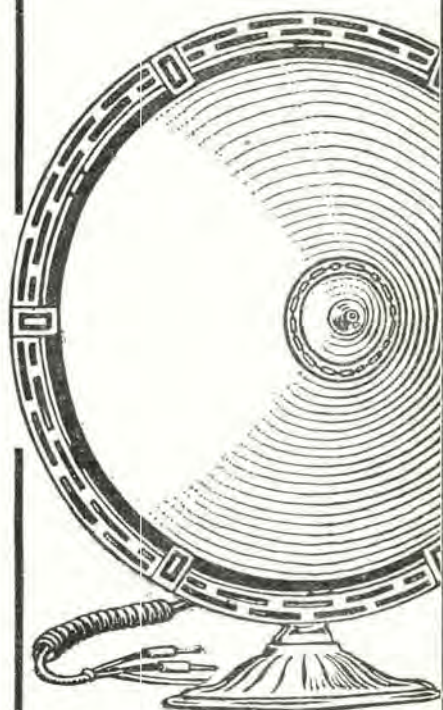
This detector is as near perfect for all requirements as can be made. Super-tested for sensitivity and permanent setting of gold point. Positively fixed. Very finest construction throughout. More than 85,000 now in use and giving absolute satisfaction.

\$1.50 at your radio dealer—or by mail prepaid. (If ordering direct send name of nearest radio dealer.)

Advance Electric Co.
1260 W. Second St.
LOS ANGELES, CALIF.

Herald
\$13.75

A FREE-EDGED cone speaker, 18 inches high, with protecting metal frame. Compare this handsome new Herald for volume and tone with any higher priced speaker at your dealer's.



BAKER-SMITH CO., INC.
Call Bldg., San Francisco, Cal.
Selling Representatives for Pacific Coast

"WHO'S WHO"

In RADIO

—and the reasons why

A. J. TOBEY

President, A. J. Tobey Company

1927 will be the stabilizing year for the entire radio world.

Look back at the automobile industry and you can draw an excellent comparison. In the early years of automotive manufacturing, hundreds of factories were in existence. Today there are only a few. Prices have been reduced,

found to be taking a far more lenient attitude toward lending money for expansion purposes. Gone are the days when improvements came so thick and fast that financial institutions were skeptical because of new inventions throwing into the discard vast stocks. Those hectic days are over.

All in all, both from the manufacturers' and dealers' standpoint, the radio business offers sounder stability and surer profits. Radio fans will benefit by greater all around enjoyment, not alone from their radio sets, but in the constantly improved and better balanced programs arranged for them by the broadcasting stations.

Even during the past few months, clearness of reception and tonal qualities have been improved wonderfully. This is due, largely, to socket power, which supplies constant voltage at all times and increased distance reception. Because of the ease of operation of the socket power, radio entertainment has been made more enjoyable.

Another great improvement in radio reception during the coming year will be made in tubes and speakers, the lungs and voice of radios, not in the radios themselves. Purer, clearer, sweeter tones will be perfected. Static troubles will be practically a thing of the past; also will birdie noises, crackling, hum and distortion. Speakers will make the music and voices seem right in the room so clearly and truly will they be registered.

This year a home without a radio will be as incomplete as the home without a motor car. Furthermore, radio fans can bring their out-of-date radio sets up-to-date with just a couple of accessories, namely, a socket power, better tubes, and speaker.



though products are finer than ever. The companies building them are exceptionally strong, financially. Dealer organizations have been perfected. Service is far superior.

As 1927 swings in, the banks are

Timely Trade Topics

The next meeting of the Radio Manufacturers' Agents Ass'n of Southern California will be held at noon on February the 4th in the Chamber of Commerce building. Matters of great importance will be discussed at this meeting, and the officers urgently request the attendance of all members.

Among other speakers will be Mr. Phil Gough who will give a talk on a matter which will be of great interest to the Radio Industry.

James Hermans, who represents the Formica Insulation Company, the Pacent Electric Company, the Cornish Electric Company and the Radiolamp Company, has just returned from New York and other parts of the East, where he visited the different factories which he represents. Mr. Hermans reports that business is very good in the East.

W. K. Glasby, of the Pacific Wholesale Radio Company, is visiting the factory of the Freed-Elsemann Company, Buffalo.

H. M. Saul, formerly associated with the Pacific Motor Supply Co. of Los Angeles and San Francisco, is now a member of the sales force of the Herbert H. Horn Co., 1629 S. Hill street, Los Angeles. Mr. Saul will be glad to meet his host of friends at his new location.

A number of new features will soon be heard from various Southern California radio stations. Walter Biddick, whose business is that of arranging and placing programs, will disclose some of the new features within a short time. He has planned and directed many hours of splendid entertainment and we are awaiting with interest his newest innovations.

The Yale Radio Electric Co. report that the Federal Ortho-Sonic authorized dealer list in Southern California will be completed in the very near future. Just twenty-seven more exclusive Ortho-Sonic dealers will be appointed, after which the Southern California territory will be closed. This is done as a matter of protection to Federal dealers, as it is the policy of both the Federal Corporation and the Yale Electric Co. to accord the authorized retailer one hundred per cent co-operation and full assurance than an Ortho-Sonic agency will be of real value to those handling the line. If you are interested in Federal get in touch with Yale Radio Electric Co. at once.

The C. E. Mfg. Co., operating that gigantic radio tube factory in Providence, R. I., have the honor of making tubes that were used in the winning of the world's long distance championship in the last international tests.

The Pacent Electric Company, represented by James A. Hermans Company in San Francisco, has opened up a Los Angeles office at 224 West 16th Street, managed by Charles Hearley. Mr. Hearley reports that they are carrying a complete stock of Pacent material. C. C. Lawton Company is solidly behind the Pacent equipment and is doing a very excellent merchandising job.

Mr. Demarest, of the Radio Supply Company, reports that he now has one of the most complete stocks of Radio parts in the United States. He invites all the dealers and small set manufacturers to come and look over the stock. He feels sure that he will be able to supply their needs.

Object—Matrimony

Are you looking for a husband or wife? If you are, get your picture published in Radio Doings. In a recent issue we printed a picture of Miss Lucile Bruner from Herbert H. Horn's store sitting at an All-American receiver. Miss Bruner has received a letter from a cowboy in Idaho, who saw this picture, asking her to correspond with him with a view to matrimony. This gentleman from the "wide open spaces" assures the lady that he neither drinks, chews or swears, in fact, he is a very desirable matrimonial prospect.

WJR Has Unique Studio

Station WJR's new Good Will studio in the Richards-Oakland show rooms on the ground floor of the General Motors Building, Detroit, is in a class by itself, at least in one respect. So far as can be learned, the Richards-Oakland station is the only station in the world which operates a studio on the ground floor, in which the entertainers are clearly visible to passersby on the streets.

Huge electric letters, "W-J-R," in front of the General Motors Building are constantly attracting visitors from the streets to watch the performers at the microphone. Three sides of the studio are glass, and so there is no difficulty at all in watching every movement of the radio artists.

HAVE YOUR STATIONS LISTED ON
THE DIAL

For Instant Selection

"DIAL-LOG" Fits Any Size Dial
Agents Wanted—600 Per Cent Profit
SAMPLE 35 CENTS

Address Box W, Radio Doings
407 E. Pico Street Los Angeles, Cal.

"Ear-Minded"

(Continued from page 16)

"In other words, after a long period in which, without knowing it, you were psychologically lop-sided, that is, just eye-minded, you have begun to get back to a more even psychological balance through becoming ear-minded again. The process is not finished yet, however. You notice that whenever a broadcast speech, no matter how good, runs more than ten or twelve minutes, you begin to squirm and fidget. That is because you have depended so long on seeing the speaker's face and gestures to renew your interest. Television, when it is perfected, will probably complete the change and produce the perfect balance of the senses."

A voltmeter so arranged that the "B" battery potential may be measured from time to time is a valuable adjunct to any radio receiver.

"CHIEF CRYSTAL"

(Cat's Whisker Included)



Tones
Loud and
Clear

Plenty
of
Volume

(Insist on This Label)

LONG LIFE
SUPER-SENSITIVE
GOOD RECEPTION

Absolute Satisfaction
Guaranteed

AT YOUR DEALER

CHIEF RADIO
CRYSTAL CO.

608 E. Fifth St., Los Angeles, Calif.

Broadcasters' Digest

"Uncle Remus" has just returned to Los Angeles, having concluded an extensive advertising tour for the Western Auto Supply Company, having covered 14,000 miles and entertained at 96 stores in Washington, Oregon, California and Arizona.

At nine o'clock the night of February ninth the Boy Scouts of America will stage an hour's program from KHJ, which will include music by the band, soloists and brief talks by scout executives.

One of the most popular orchestras in the West, Art Mace and his eight versatile entertainers, who are now playing regularly at the Rendezvous Ballroom, Santa Monica, will soon be heard over one of the Los Angeles stations.

It has been more than a year since Radioland heard this orchestra, and everyone is glad to learn that they have returned to the Southland and will again be on the air.

Plans are already being laid for the celebration of the fifth anniversary of KGW early in March. Indications are that it will surpass in variety of program and equal, perhaps, in quality, the 15-hour broadcast of Christmas Day.

Dance music of both the modern jazz type and the old-fashioned kind our mothers and fathers used to love, is a weekly feature from KPO, San Francisco, on Friday nights, from 8 to 10 o'clock. The music is furnished during this period by Krausgrill's modern syncopators and the Beckstedt's old-fashioned orchestra.

The Northwest broadcast chain of KGW, KFOA at Seattle, and KHQ at Spokane has become more definitely established with the new long time contract with Cheek-Neal Coffee Co. (Maxwell House Coffee), which will present programs by a six-piece orchestra, with vocalists in duos, solos and quartets, in concerts weekly, originating in the KGW station. This makes four weekly hook-ups on the chain.

The oldest loud speaker in the world has been discovered in Vienna—a megaphone used some three hundred years ago by Count Rudiger to shout orders during a defense of the city, and still utilized by the Vienna fire brigade.—*Musical America.*

Stanley Hall, popular monologist from KOA, is giving a series of Friday night humorous talks from KHJ in Los Angeles.

BLUE VITROL GROUND

NEW AND IMPROVED - NOW ON THE MARKET

This DX ground is superior to anything on the market today, the result of two years' experimenting. Approved by leading radio engineers. Can be installed in five minutes. Will give more volume, selectivity, clearer tone quality and real DX.

Price \$5.00

Mail Orders Given Immediate Attention

C. H. PRESTON

Chatsworth, Calif.

OUR EXCEPTIONAL OFFER

*Get the Two Greatest Radio Magazines
For Almost the Price of One!*

SAVE \$2.00

RADIO NEWS—The National Radio Monthly
with the largest circulation and following of
any Radio publication in the world—

Regular Price \$2.50

RADIO DOINGS—The Leading Pacific Coast
Radio Weekly—the Radio authority of the
Pacific Coast—

Regular Price \$3.00

These two leaders in their respective fields—the great
National Monthly and the great Pacific Coast Weekly—

BOTH NOW FOR \$3.50

You Can't Afford to Pass This Offer By

Attach Money Order, Check or Currency to the Coupon and Mail to Us
Right Now

RADIO DOINGS,
407 E. Pico Street,
Los Angeles, Calif.

Or Conger & Moody,
Sharon Bldg., San Francisco, Calif.

Send me **RADIO DOINGS** and "RADIO NEWS" for one year.
I enclose \$3.50.

Name.....

Address.....

City and State.....

(Specify NEW or RENEWAL.)

Mohawk Radio

One  Dial

THE PIONEER ONE-DIAL SET

Any of the following dealers will be glad to demonstrate a set for you. Once demonstrated, you will buy.

LOS ANGELES

R. C. Larkin
4285 Beverly Blvd.
Mohawk Battery & Radio
2115 Sunset Blvd.
L. A. Duncan
2891 West Pico
Bob Brown
4353 South Figueroa St.
Monarch Radio Company
2189 W. Washington Blvd.
L & Y Electric Co.
8864 West Pico
Normandie Radio
5069 Hollywood Blvd.
Barney Campbell
8210 Sunset Blvd.
Top Notch Radio
747 S. Main St.
ANAHEIM, Schmidt Music Co.
217 West Center
GLENDALE—Alexander Radio
Shop, 216 North Brand
WHITTIER, H. D. Squires
218 South Greenleaf
LONG BEACH, R. W. Haynes
137 East Fourth
CARLSBAD, Standard Garage
WILMINGTON—Kelm Radio
SANTA PAULA—Kit Carson
ONTARIO—Davis Electric Co.

SAN DIEGO

Nelson Radio
Fains Radio Shop

FILLMORE, M. D. Basolo
SOLANO BEACH, I. E. Connor
CALEXICO, City Electric Co.
313 Second St.
INDEPENDENCE, Sterling Bros.
Garage
BISHOP, Exide Battery Shop
SAN CLEMENTE, San Clemente
Electric Shop
LONE PINE, James G. Ducker
MONROVIA, J. H. Terry
416 South Myrtle
SANTA BARBARA, Channel Elec-
tric Co., 523 Anacapa St.
SANTA PAULA, Kit Carson
SANTA MONICA Bay Dist. Dealer,
Warren Radio Shop, 1548 17th St.
SEAL BEACH, D. W. Collier
321 Main St.
LOMITA, Calkins Hdwe. Co.
TORRANCE, De Bra Radio Co.
BELLFLOWER, S. E. Moore
617 Somerset St.
SAN PEDRO, Journey Electric Co
180 Sixth St.

PASADENA

Lee Radio
922 E. Colorado
Wilson Music Co.
180 E. Colorado
Radio Doc
1581 Walnut St.

COOK-NICHOLS CO.

411 S. San Pedro St.
Los Angeles, Cal.

482 S. Fair Oaks Ave
Pasadena, Cal.

The 1927 deluxe model 45,000 cycle superheterodyne by Gerald M. Best is announced in "RADIO" for February--- on sale at all news stands January 28th. This "Super-de-luxe-super" is Best's crowning achievement. The hundreds of thousands of followers of Best's super will realize the importance of this announcement.

And that's not all. The February issue of "RADIO" also shows how to use the Infradyne amplifier on the Bremer Tully, Silver Marshall, Browning Drake, and Hammarlund Roberts HI*Q receivers. What a difference this amplifier makes to your present receiver. Another feature in February "RADIO" is the construction of a radio-electric phonograph. A brand new idea by an eminent authority. Everybody can cash in on this scoop. About a dozen other feature articles round out the greatest issue in our ten years' history of radio magazine publishing. It will pay you to subscribe to "RADIO" for one year. It costs but \$2.50 and insures regular receipt of copy.

PACIFIC RADIO PUBLISHING CO., Inc.

Pacific Building

San Francisco, Calif.

SM

Herbert H. Horn

Announces His Appointment as
DISTRIBUTOR FOR SOUTHERN CALIF.

For the Famous

SILVER-MARSHALL
~ ~ **LINE** ~ ~



We Carry a Full Line of All
SILVER-MARSHALL
PRODUCTS

SERVICE

Prompt attention given Mail Orders. Deliveries
to all parts of city four times daily.

Two deliveries daily to all outside Southern
California points.

HERBERT H. HORN

1629 South Hill Street. Phones: WEStmore 1713 and 1543
Los Angeles



FEDERAL Ortho-Sonic

MAY BE HAD
IN THREE
TABLE
MODELS

D 10, Five Tube
Price \$100

E 10, Six Tube
Price \$150

F 10, Seven Tube
Price \$250



All of the above models equipped with the new
Centralized Control

ALSO SEVEN BEAUTIFUL CONSOLE MODELS
Priced from \$200 to \$1000

SEE A FEDERAL DEALER NOW

We Recommend

Eliminators

Modern
Sterling
Balkite

Cunningham
RADIO TUBES

Since 1915-
Standard for all Sets
In the orange and blue carton

Speakers

Amplion
Enchanter
Herald
Fine Arts

Wholesale Distributors

Yale Radio Electric Co.

1111 Wall Street

LOS ANGELES

Westmore 3351

This file including all text and images are from scans of a private personal collection and have been scanned for archival and research purposes. This file may be freely distributed, but not sold on ebay or on any commercial sites, catalogs, booths or kiosks, either as reprints or by electronic methods. This file may be downloaded without charge from the Radio Researchers Group website at <http://www.otrr.org/>

Please help in the preservation of old time radio by supporting legitimate organizations who strive to preserve and restore the programs and related information.