

RADIO DOINGS

RED BOOK OF RADIO

The *Radio Authority*

Pacific Coast

10¢
WEEKLY

1-30-27
Gesler, Edwin A.
2301 W. 29th Place



KFRC COMEDY DUO, SAN FRANCISCO, CALIF.

Vol. X

JANUARY 9-15, 1927

No. 2

Hear the "5-50" and Other Popular

CROSLEY

MODELS

At the Following Authorized Dealers in Los Angeles and Vicinity:

LOS ANGELES

South

DAVIS RADIO CO.
2817 S. Main St.
WEstmore 6948

DE HOOG BROTHERS
6120 S. Broadway
THornwall 0224

LOS ANGELES MUSIC CO.
4410 S. Broadway
AXridge 5479

STURGIS MUSIC CO.
4711 S. Broadway
AXridge 7106

Southwest

COLLINGS HARDWARE CO.
3425 S. Vermont Ave.
BEacon 7025

L. A. DUNCAN
2891 W. Pico St.
EMpire 1141

WESENBERG RADIO MUSIC
Co.
3819 S. Western Ave.
VERmont 7929

WEST COAST RADIO CO.
2407 W. Slauson Ave.
VERmont 1893

Hollywood

ANDREWS RADIO CO.
1704 McCadden Place
GLadstone 0704

C. R. HAUSER
4310 Melrose Ave.
OLympia 2666

OTTO K. OLESEN
ILLUMINATING CO.
6548 Hollywood Blvd.
GLadstone 5194

Westlake

RAMPART RADIO
2620 W. 6th St.
WAShington 1613

Wilshire

BIMINI ELECTRIC & RADIO
Co.
109 S. Vermont Ave.
DRexel 2990

CROSBY ELECTRIC CO.
3310 W. 6th St.
WAShington 0372

Downtown

AMERICAN RADIO
108 E. 8th St.
TUcker 6028
(Branch 152 W. 2nd,
Pomona)

FRANK RADIO CO.
715½ S. Main St.

HARRY W. HARRISON
848 S. Flower St.
TRinity 9777

STARR PIANO CO.
630 S. Hill St.
TRinity 3905

GLENDALE

GLENDALE MUSIC CO.
(Salmacia Bros.)
118 S. Brand Ave.
GLEndale 90

SOUTH PASADENA

THE RADIO ELECTRIC
STORE
1161 Fair Oaks
Colorado 6574
Eliot 3397

CROSLEY

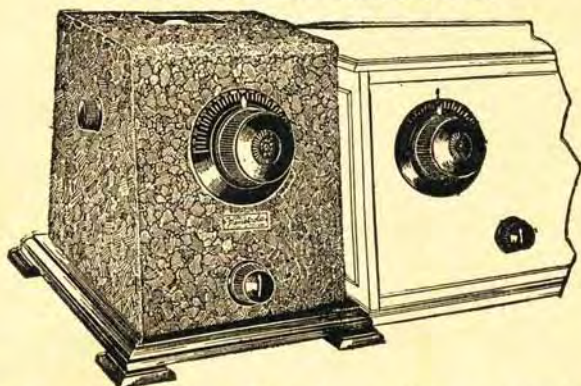
RADIOS

"For Complete Satisfaction"

Double your stations

Penetrate Interference

Cut Through Locals by Adding Penetrola to
Your Present Radio Set



Penetrola transforms your old radio set into a powerful, up-to-date receiver. It gives greater range and volume and real selectivity. It stops radiation and "blooming." It is easily attached and operates with any set.

PRICE
\$35

Penetrola is manufactured by the makers of the Walbert Isofarad Receiver—the most advanced radio receiver on the market. If you do not already own a radio receiver, let us tell you about the Isofarad with Penetrola built-in.

Walbert Penetrola

If Your Dealer Can't Supply You, Mail the Coupon

C. W. SMITH CO.

"The Home of Utah Speakers"

Gentlemen:

Enclosed please find check or money order for \$35 for which please send me one Walbert Penetrola. If at the end of 7 days it does not perform to my entire satisfaction I will return it and you will refund my money.

Loop type Outdoor aerial type
(Check which type of set you own)

Send me complete information about the Walbert Isofarad receiver without obligation.

NAME

ADDRESS

1125 Wall St.

LOS ANGELES, CAL.

Westmore 3291

Radio Doings

LOS ANGELES
407 E. Pico St.
Westmore 1401

Trade Mark Reg. U. S. Pat. Off.

SAN FRANCISCO
406 New Call Bldg.
Douglas 1388

"The Red Book of Radio"

HUBERT C. CHARLES
General Manager

H. C. CHARLES, Editor
FORBES VAN WHY,

Technical Editor
MAJ. LAWRENCE MOTT, Signal
Corps, O.R.C., Associate Editor

CONGER and MOODY,
Sharon Building,
San Francisco Representative
J. W. HASTIE,
Eastern Representative

New York Office, 155 E. 42nd St., New York City

(Entered as second-class matter, Nov. 25, 1922, Los Angeles, Cal., Post Office, under Act of March 3, 1897.)
Copyright, 1926, by Horwood Publishing Co.

Issued Weekly. Ten Cents a Copy. Three Dollars a Year. Canada and Foreign Countries, \$3.50 per Year.

Vol. X Los Angeles JANUARY 8, 1927 San Francisco No. 2

IN THIS ISSUE

SHOULD WOMEN SWIM NUDE?

Great interest being shown in the prize contest on this momentous question, as instituted by Major Mott of KFWO. He also gives the first authentic information on the broadcasting of the Catalina Channel Swimming Marathon, January 15th.

RADIO AN AID TO THE AMBITIOUS SINGER. (Illustrated)

Josephine Lucchese, the "American Nightingale," voices her opinion on radio as a means of promotion for the up-to-date concert manager.

PROMISING LOCAL ARTIST. (Illustrated)

Louise Bosvden, a member of the Parent-Teachers Community Players, displays her superb artistry before microphone.

BROADCAST CHANGES

REGINALD WERREN RATH IN RECITAL. (Illustrated)

The popular American baritone to sing over Stations KFI and KPO, January 13th.

DX CLUB CORRESPONDENCE

RADIO TOPICS OF THE DAY

QUESTIONS AND ANSWERS

Forbes W. Van Why, A. I. E. E., A. I. R. E.

THE WOMAN'S PAGE

Edited by Carey Preston Rittmeister.

WHO'S WHO IN RADIO. (Illustrated)

Clarence E. Ogden, President, Kodel Radio Corporation.

TIMELY TRADE TOPICS.

ONLY \$3.00 A YEAR

Have RADIO DOINGS mailed to your home every week. Fill out blank below. Either mail to us, or your dealer will be glad to take care of it for you. Please indicate whether NEW or RENEWAL.

HORWOOD PUBLISHING CO., 407 E. Pico St., Los Angeles,
406 New Call Building, San Francisco, California.

Gentlemen: I enclose \$3.00, for which send me RADIO DOINGS for one year.
NEW—RENEWAL.

Name _____

Address _____

MAGNAVOX

Harmony-Duo

SINGLE DIAL CONTROL

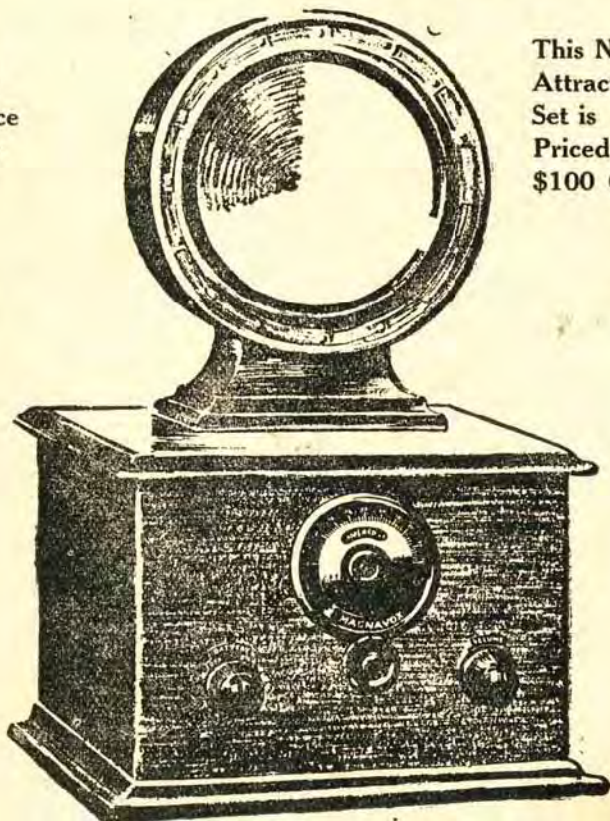
Liberal
Trade-in
Allowance
On Your
Old Set

This New
Attractive
Set is
Priced Under
\$100 Complete

FREE

OPEN

D
E
M
O
N
S
T
R
A
T
I
O
N



E
V
E
N
I
N
G
S

U
N
T
I
L

8

AMERICAN RADIO Co.
108 East 8th St.
LOS ANGELES, CALIFORNIA.
TUCKER 8028

Pomona Store

152 West Second Street

Phone 1076

Duplicate These Results by Having Us Build You

REMLER INFRA-DYNE AMPLIFIER

American Radio Co.
108 East 8th Street
Los Angeles, Calif.
Gentlemen:

Just a few words to let you know how well satisfied I am with the 10-tube Infradyne recently purchased at your place of business.

I have had a few of the best radios demonstrated at my home, but felt that something was lacking in every single one of them. Some one recommended me to try the Infradyne, suggesting your firm and I sure am thankful that I did stop in your store and left my order with you.

I never did care for distance until I got my set. You sold me this set on tone quality and selectivity alone, using the Western Electric Cone that you sold me. I am willing to put this set up against any for tone—as for distance, here are a few stations all on the loudspeaker with absolutely no local interference: WSWS, WCCO, WLW, KDKA, KMOX, WJR, WEAJ and many others.

A sure booster for the American Radio Co.

I am respectfully yours,

JOHN R. HARVEY,

Culver City, Calif.

Let us help you to build the famous Infradyne, or we will check over the one you have built. We can get you results.

AMERICAN RADIO CO.

108 East 8th St.

TUcker 6028

Los Angeles, Cal.

Pomona Store

152 West Second Street

Phone 1076

SEE THESE

New Kits and Eliminators

SILVER SHIELDED SIX

Silver Marshall's Famous Circuit—Completely Shielded—Selective—Wonderful Tone—Get the Kit of Specified Matched Parts—No. 630

For a Small Set Use the No. 620 Kit

The Silver Cockaday

Four Tubes—Single Control—Interchangeable Plug-in Coils for All Waves

All Parts for E. M. Sargent's Infradyne in Stock

Using Thorola, Camfield or All-American Coils and Remler Amplifier.
Also Special Cardwell, Hammarlund and Continental Condensers

We now have Bremer Tully's New Kit in Stock

The Counterphase Power Six—More Power, Better Tone and More Selective. Ask About it.

Also see the Karas Equimatic Kit and the National Company's Browning-Drake Apparatus

Cut Out Your "B" Battery Expense by Using a Dependable Eliminator

Acme E1 will supply sets of six tubes and up at 180 Volts

Acme E3 for sets up to six tubes at 180 Volts

E1—\$50.00. E3—\$39.50. Including Raytheon Tube

All-American Constant B—very efficient, \$39.00

Kodel's New Model 10 B Transifier, \$42.50

Kodel A and B Power Unit, Less Tube, \$65.00

New Silver Marshall Plug-In Eliminators, Type 650C

The New Sterling B Eliminator, Less Tube, \$24.00

Keep Your "A" Battery Up with a Trickle Charger

Balkite—Silite—Tungar—Acme—Sterling—Vesta

An Inexpensive Way of Keeping Your Battery at Its Best for All Times

DEALERS: Park Next Door at Our Expense

Radio Supply Co.

WHOLESALE

920 So. Broadway

VA. 6063

Los Angeles

Send for Our Catalogue

WE CARRY GOOD STOCKS

Of the Representative Lines of Radio Parts
at All Times

Here Are Just a Few of Them:

ACME Apparatus, Eliminators and All Parts
 ALDEN Truphonic Amplifiers, Parts, Etc.
 ALL-AMERICAN RADIO CORP.—Full Line
 AMERTRAN De Luxe and Regular Transformers
 AMSCO SLF Single and Siamese Condensers
 BENJAMIN Sockets, Brackets, Coils, Etc.
 BREMER TULLY Parts and Kits—Full Line
 CARTER RADIO CO.—Parts, Imp. Rheostats, Etc.
 DAVEN RADIO CORP.—All Resistance Units and Tubes
 DUBILIER CONDENSER CORP.—Complete Line
 FORMICA Black and Walnut Sheet Bakelite and Tubing
 GENERAL RADIO PARTS—Full Line of Parts
 HAMMARLUND Parts—Condensers, Coils, Etc.
 JEFFERSON Transformers and Tube Rejuvenators
 MARCO Dials, Switches and Other Parts
 NATIONAL CO.—Browning-Drake Units and Parts
 PREMIER Hedgehog Transformers and Parts
 REMLER Radio Parts—Infradyne Units, Etc.
 SAMSON Transformers and Chokes—All Sizes
 SANGAMO Bakelite Fixed Condensers—Full Line
 SILVER MARSHALL Parts, Kits and Eliminators
 STERLING Tube Testers, Eliminators, Trickle Chargers, Etc.
 THORDARSON Audio and Power Transformers
 TOBE DEUTSCHMANN Hi Test Condensers
 TOWER Cone Speakers and Head Sets
 VESTA Trickle Chargers and A Power Units
 WESTON Meters—Complete Line
 YAXLEY Parts—Rheostats, Jacks, Switches, Etc.

ALL-AMERICAN, THORDARSON AND MAGNAVOX
REPLACEMENT TRANSFORMERS IN STOCK NOW

DEALERS: Park Next Door at Our Expense

Radio Supply Co.

WHOLESALE

920 So. Broadway

VA. 6063

Los Angeles

Send for Our Catalogue

PREPARE NOW!



Build for the Future
by Using the
Stadley All-Wave Coil
*The Latest Achievement in
Radio!*

RADIO LISTENERS! What will your set be worth when the proposed national legislation goes into effect?

CAN YOU tune in on stations broadcasting on low wave lengths?

THE STADLEY ALL-WAVE COIL makes possible the tuning in of all stations, whether they broadcast on a wave length of 30 meters or 550 meters.

The present-day confusion and crowding on the limited wave lengths assigned to broadcasting stations makes it imperative that new channels be opened, thru which new stations may be put on the air and old stations relieved of their present congestion. This means that stations must be assigned low wave lengths, and unless your radio set is equipped with an all-wave coil, it will not be possible for you to tune in on stations using these new low waves.

Even today, KDKA, Pittsburg; WGY, Schenectady, and WJZ, New York, are broadcasting on a low meter wave as well as their allotted high meter wave. This shows the trend of future developments.

Modernize your set by installing the **STADLEY ALL-WAVE COIL**. Price, including full directions for installing, \$10.00. If your dealer cannot supply you, send money order or bank draft for the above amount direct to manufacturers, and we will mail you the coil postpaid to any point in the United States. (Personal checks not accepted unless certified.) Price of coil complete with tandem condenser, dial and switch, \$22.50.

Pacific Coast Sales Representatives:

Harry A. Lasure Co., 212 Chamber of Commerce Bldg., Los Angeles, Calif.
Phone WEStmore 7345

Ask for Demonstration at

Karyl Radio Shop, 2019 West Seventh St. (Nr. Alvarado) Los Angeles, Cal.
Phone DRexel 7845

Jobbers and dealers wanted thruout the country to assist us in the distribution of this coil. Exclusive territory now being allotted; attractive proposition. For full details write direct to manufacturers:

STADLEY & ZIMMERMAN

2019 WEST SEVENTH STREET

LOS ANGELES, CALIFORNIA

Editorial Comment

Progress

IT is agreed by all that 1926 has been the most remarkable period in the history of Radio, even though nearly all the noted men in the Radio industry differ in just what has been the most distinct achievement in the last twelve months.

Radio Telephony across the Atlantic Ocean, beam or directional wireless, weather maps by Radio photography to the vessels at sea and the sending of short-wave messages half way around the world seem to stand out as the best of the achievements in 1926.

The Radio experts, and those most closely connected with the industry, naturally think that the great deeds accomplished in their own particular line of endeavor were of the greatest benefit to the industry and to civilization.

Major General C. M. Saltman, chief of the Army Signal Corps, states that the satisfactory establishment of Radio Telephony communication across the Atlantic Ocean, through the joint efforts of the American Telephone and Telegraph companies and the British Post Office, is the outstanding achievement of the year.

Dr. George K. Burgess, Director of the Bureau of Standards, and Dr. J. H. Dellinger, of the Radio Research Laboratory of the Bureau, believe that the greatest change in radio has been the shift of interest and importance from distance reception to local reception and the great desire on the part of the public to receive clear and perfect reception rather than the screeching and howling which usually accompanies reception from great distance.

United States Senator Dill declares that the development of the Transmission of Radio signals by the Beam light recently developed by Marconi is of the greatest benefit to the public.

Dave Sarnoff, V. P. of the Radio Corporation of America, points out that the short-wave directional wireless marks one of the greatest steps in the development of Radio.

C. F. Marvin, Chief of the Weather Bureau, says that Radio is indispensable to the operation of the weather bureau, and it has aided them greatly in the preparing and broadcasting of forecasts and storm warnings.

C. Francis Jenkins, well known inventor of Washington, D. C., states that one of the greatest accomplishments of Radio has been the safety which it has assured the ships at sea, and through the use of the wireless compass they are able at all times to get their bearing within one degree.

Captain Ridley McLean, Director of Naval communications, points out the great and constantly increasing use of short-wave receivers by the military and naval forces of not only this country, but of the world, and the efficiency obtained through the use of this type of receiver.

Radio has made vast strides during the past year, and even though it seems to have attained a high degree of perfection, it is still in its infancy, so we may expect better and greater things from and through the use of radio in the years to come.

We believe that the greatest improvement in Radio has been in the fine type of clear broadcasting and the excellent talent which the stations are now employing.

Should Women Swim Nude?

Much has been said of "jealousy between stations," and so forth, but Major Lawrence Mott, at his wonderful little KFWO, out on the sun-blessed Island of Catalina, has no faith in such things. He has a *credo* all his own, which is, in effect, that there flows from the average human heart a very great deal of the milk of human kindness. And he has proven this by the fact that, in the matter of broadcasting stations all over the U. S. and Canada, he has met with nothing but the most courteous of treatment as to his famous rebroadcasting of programs here, there and everywhere. The Major says in a communication to us:

"Seems strange, but the only rebuff that I have encountered in my requests to other stations for permission to rebroadcast their programs, came from—a Los Angeles station! In very truth, a prophet is not without honor save in his own country!"

The friendship existing between the hustling Major, perched out on his lovely island, and the management of distant stations results in splendid arrangements for the pleasure of the listening public, as follows: The most unique event in sporting annals will be held on January 15th on the Catalina Channel—the much-heralded Swimming Marathon from the island to the mainland, a distance of approximately 21.1 miles, for an aggregate of \$40,000 in prizes offered by that prince of sportsmen, Wm. Wrigley, Jr. Through the courtesy of the Santa Catalina Island Company, Major Mott has permission to use the big Steamship Avalon of the company's fleet as a floating broadcasting station, and 6XA, the well-known portable transmitter of KNX, has been installed on the huge vessel, which will be the official convoy ship,

with a great crowd of the company's guests on board, together with President J. H. Patrick of the Island Company and also president of the Marathon Committee. On the Avalon will also be all the newspaper men and sports writers. Three microphones are in place on the vessel, one on the bridge, one in the operating room and one over the splendid orchestra, that will enliven the long night hours. 6XA will be in charge of one of the KNX engineering staff, Leslie Hewitt, and the microphones will be kept warm by none other than the Town Crier of the Day at KNX, I'il Eddie Albright, and Loyal Underwood.

Not content to rest there, Major Mott has gotten in touch with the following distant stations that will arrange to pick up either KNX or KFWO at various times during the swimfest, and rebroadcast the splashing of the Pacific Ocean, etc., with the latest race news, for listeners all over the U. S. KGO, KGW, KOA, KMOX and WJAZ, and it is a choice between three Atlantic seaboard stations. A decision will have been reached by the time this issue of Radio Doings is in your hands. Thus it will be seen that there are but very few listeners in the whole country that will not have the distinctly unique fun of listening to broadcast from a floating microphone! 6XA, on the ship, will probably be on its usual 105 meters. KFWO and all other stations associated in the recast will be on their regular wave lengths, of course.

Further details will be in next week's issue. Major Mott advises that letters in the \$25.00 contest for the best epistle, by either man or woman, on the subject, "Shall Women Wear Bathing Suits or Not?" in the Ocean Marathon, are coming in to KFWO "by the bushel basket loads, and all very sane."

Radio Aids the Singer

Declaring radio to be the greatest single aid to the ambitious singer and backing her statements by strong and logical conclusions, Josephine Lucchese, world-famed American-born and American-trained coloratura soprano, while stopping in Los Angeles last week, preparatory to leaving the states for a season at the Royal Opera of Madrid, was the guest of President J. A. Hartley of the Pacific Wholesale Radio, Incorporated.

Due to a contract made one year ago, but which expires this spring, the



JOSEPHINE LUCCHESE

"American Nightingale," as she is known, was unable to appear on any of the local radio stations, much against her own sentiments. "I believe that if the professional concert or opera singer could but show his or her wares that increased box office sales would be the result," she stated. "The motion picture houses nowadays show a few scenes of the next week's offering, thus whetting the appetite of the public. The same

Promising Local Artist

Considerable comment has been made by those who recently heard the rendition of the play "Spring," directed by Miss Marita Foucher, during one of KFI's popular dramatic hours, concerning the young lady who played the role of "The Girl," and we are only too pleased to publish her photograph as



LOUISE DOWDEN

well as to say a few words about her. This role was played by Louise Bowden, who is prominently identified with the Parent-Teachers' Community Players of Los Angeles; she has also taken part in a number of the Potboiler plays in this city, and in each of her many roles she has displayed an artistry that fully warranted the many pleasing comments made by local critics. Both before the microphone and on the speaking stage this young lady has displayed exceptional ability, and her future appearances are looked forward to with keen interest.

could well be applied to the radio to be used as a means of promotion for the up-to-date concert manager.

Broadcast Changes

NEW STATIONS

| Call | Owner | Wave Length | Frequency Keys. |
|------|-----------------------------------------------------------------------------------------------------|-------------|-----------------|
| WLBR | Alford Radio Company, Belvidere, Ill..... | 335 | 895 |
| KGDX | William Erwin Antony, Shreveport, La..... | 291.1 | 1030 |
| WBOS | Babson's Statistical Organization, Wellesley Hills, Mass. | 242 | 1239 |
| WBET | Boston Transcript Co., Boston, Mass..... | 384.4 | 780 |
| WMPC | First Methodist Protestant Church, Lapeer, Mich..... | 222 | 1351 |
| WLPP | Robert A. Fox, Ashland, Ohio..... | 220.4 | 1360 |
| WLBJ | Henry Grossman, Cleveland, Ohio..... | 300 | 999.4 |
| WLBN | William Evert Hiler, Portable (Chicago, Ill.)..... | 225.4 | 1330 |
| KGDY | J. Albert Loesch, Oldham, S. Dak..... | 210 | 1428 |
| WCOM | 172nd Field Artillery, Headquarters Battery, New Hampshire National Guard, Manchester, N. H..... | 252 | 1190 |
| KGDZ | Norwegian Lutheran College, Decorah, Iowa..... | 431 | 695.6 |
| KYA | Pacific Broadcasting Corp., San Francisco, Calif..... | 399.8 | 750 |
| WLBA | Philadelphia School of Wireless Telegraphy, Philadelphia, Pa. | 236.1 | 1270 |
| WRSC | The Radio Corp, Chelsea, Mass..... | 270.1 | 1110 |
| KFCR | Santa Barbara Broadcast. Co., Santa Barbara, Calif. | 413 | 726 |
| WTRL | Technical Radio Laboratory, Midland Park, N. J..... | 280.2 | 1070 |
| WOKT | Titus-Ets Corp., Rochester, N. Y..... | 340 | 881.8 |
| WLBO | Frederick A. Trebbe, Jr., Galesburg, Ill..... | 243 | 1234 |
| WLBQ | S. Dale Trout, Atwood, Ill..... | 230.6 | 1300 |

CHANGES

WKBO Camith Corporation, Jersey City, N. J., wave length changed from 309.1 meters, 970 kilocycles, to 303.9 meters, 986.6 kilocycles.

WJAR The Outlet Co., Providence, R. I., wave length changed from 305.9 meters, 980 kilocycles, to 483.6 meters, 620 kilocycles.

WIBW C. L. Carrell, Portable (Chicago, Ill.), name changed from Dr. L. L. Dill. Location changed from Logansport, Ind. Wave length changed from 220.4 meters, 1260 kilocycles, to 215.7 meters, 1390 kilocycles.

WIBM C. L. Carrell, Portable (Chicago, Ill.), name changed from Billy Maine.

WOW Woodmen of the World, Omaha, Neb., call letters changed from WOAM.

DELETES

KFUU H. C. Colburn and E. L. Mathewson, Oakland, Calif.

WIBH Elite Radio Stores, New Bedford, Mass.

STANDARD RADIO CO.

417 West Pico Street, Los Angeles, Calif.

FADA—ATWATER-KENT AND WESTERN ELECTRIC DEALER

We Carry a Complete Line

Open Model Atwater-Kent Wave Length Cut Down to 200 Meters
We Are Also Making a Specialty of Sharpening Tuning in Any Radio Set
2-Tube Harkness Changed to 3-Tube, Guaranteed Perfect Tune-Out on
Local Stations.

Telephone WEStmore 1560

Open Evenings Until 9 o'clock

Reginald Werrenrath to Give Recital

Reginald Werrenrath, the popular American baritone who sings over KFI and KPO on January 13th, through the courtesy of Ray Thomas, believes that every singer should only sing songs that fit his or her personality.

When Ray Thomas, who is Southern California distributor of Atwater Kent radio, was in the East making arrangements for Werrenrath's concert here, Werrenrath made his ideas on this point very clear. "There is nothing more ridiculous," he said, "than for a virile tenor or a ponderous bass to



essay a tender lullaby which is essentially a woman's song, a mother crooning to her baby. Then, too, it is not very convincing for a woman to sing a passionate love song of a suitor wooing a maiden, for she appears to make love to herself."

Werrenrath is among the great artists selected by Ray Thomas to give radio concerts this winter.



YOUR OLD PHONOGRAPH

HAS A

CASH VALUE! EXCHANGE IT

FOR A

Radiola 20

Operating without batteries.
No bother—no worry. Just
plug into light socket.

Let Us Demonstrate

Call BEacon 7439

Southern California Radio Co.
2135 W. Pico Los Angeles

OPEN EVENINGS

DX CLUB

FROM 'WAY DOWN SOUTH

December 14, 1926.

Editor of DX Club:

I have just noticed some of the DX records in your November 20th issue. Although I am not boasting, I believe I have a DX log for any night owl to shoot at. I have never heard Australia or Japan, as some of the Pacific Coast fans have, but here goes what I have tuned in. I have heard 462 stations. All of the United States, Canada, Mexican, Cuba and Porto Rico stations came in on the loud speaker. The rest, with the exception of two in Europe, were heard on the headphones. The following are the most distant ones: KGU, Honolulu; SBR, Brussels, Belgium; Bresleau, Germany; 1RO, Rome; 2BD, Aberdeen; 5IT, Birmingham; 5WA, Cardiff; 2EH, Edinburgh; 5SC, Glasgow; 5PY, Plymouth; 6LV, Liverpool; 2LO, London; 5NO, Newcastle; 2ZY, Manchester; PTT, Paris; CYA, Mexico City; CYL, Mexico City; FAM, Mexico City; OAX, Lima, Peru; WKAQ, San Juan; PWX, Havana; 6KW, Tuinueu; 2OL, Havana; CKCD, Vancouver; CFAC, CFON, Calgary; KFIU, Juneau; KFI, KHJ, KNX, KFSG, KTBI, KMTR, KNRC, Los Angeles; KFON, Long Beach; KPSN, Pasadena; KGW, KOIN, Portland; KFQX, KOMO, KFOA, KJR, Seattle; KOAC, Corvallis; KGO, KLX, Oakland; KSL, Salt Lake City; KPO, San Francisco; KFSD, San Diego; CNRV, Vancouver; KOWW, Walla Walla; KOB, State College; KFAF, KLZ, KOA, KFEZ, Denver; KFKA, Greeley; KFEY, Kellogg; KFAD, Phoenix, and a new government station in Haiti at Port au Prince.

I can tune in KFI any night through and kind of interference with loud speaker volume.

My receiver is an S-5 Ozarka Senior. Two radio detectors and two audios. All of the stations have been verified. I won first prize in the Ozarka 1926 International Test Contest. Would be glad to hear from any DX fan, especially those on the Pacific Coast.

TED LEHMAN,
1104 Greenup Ave.,
Ashland, Ky.

THE TOWN'S IDOL

Whipple, Ariz., Dec. 1, 1926.

DX Club:

Just a few lines to your club. During that heavy rain we had here I had fine reception of the Army and Navy football game at Chicago, getting them at 1:30 p. m.; also at 4 p. m. same day had WJZ, New York. I was the only one here that got the returns, so you can see I am mighty proud of my reception. I also picked up WIOD, Miami Beach, Florida, at about 6 p. m. I am using a Radiola 20 and a Gosilco aerial and give this kind of aerial a whole lot of praise for the wonderful reception I have been having since that aerial has been installed.

HAROLD E. WALES.

Mory Leaf, popular and novelty song artist, who became popular over KNX, the Evening Express radio station, has severed his connection with a local theater, after a two months' run, and will again be heard from time to time on radio programs. He has always been an exclusive KNX artist.

DX CLUB

HEARING IS BELIEVING

DX Club:

Recently there appeared in the DX Club section of Radio Doings two articles about my summer and winter reception with your Penetrola attachment on my set, that has aroused a question of doubt among many Radio fans, dealers and other set manufacturers; forcing me to hereby protect my good name and that good product, so I will give a statement of my experience which you are at liberty to show any one, and if they desire they may come to my home and I will demonstrate to them what I have accomplished, for the proof of all radio reception is in the hearing and seeing for oneself.

Since radio came to the public we have had in our family several kinds of sets, and like all fans, continually searching for "the best." Three years ago I built a 7-tube Precise, two dial McLaughlin. The next year I wanted to "modernize my set and get more volume, so I added on a stage of "push-pull" audio, making the set have 9 tubes; San Francisco then being obtained weakly on the speaker gave us a thrill.

Last spring I read your advertisements about the Penetrola, but having tried various boosters and attachments trying to get selectivity and distance, only to be disappointed, I was skeptical about the Penetrola claims. I delayed buying a Penetrola until I accidentally overheard a doctor from Pasadena discussing with a friend how, since putting a Penetrola on his set and, despite the fact that he lived only four blocks from

KPSN 316, he could bring in KOA, Denver 322, and KDKA 310, Pittsburg, "too loud to listen to"—that settled it, I got my first Penetrola, attached it to my old set, which could barely hear Denver, and when KPSN was on they mixed up with KNX; well, I duplicated the doctor's results, and then logged 130 out-of-town stations during the early spring and summer, getting distant stations two and three meters either side of our locals. With the Penetrola the old set quit blooping, squealing and howling, and raised my radio signals above the noise level. I played Portland, Walla Walla and CNRV, Vancouver, B. C., all last summer on the speaker, louder than most 5-tube sets can get KFON, Long Beach.

S. W. HENKEL,
1338 N. Orange Grove Ave.,
Hollywood, Calif.

Phone HE-5273.

All classes of broadcasting has shown a marked improvement during the year, but none so much as the manner of announcing the football games. Previously, the announcer simply told of the play that had been made, now the running form of announcing has added very much to the interest of the hearer and it is not hard to follow the ball, and one can almost feel that you are attending the game. We believe Glenn Rice of KNX was the first to use this method and others have quickly followed, much to the advantage of the lovers of the game who have not been able to see the games in person.

Radio Topics of the Day

A Weekly Review of Radio News, Thought and Opinion

EXPECT TO HAVE AVIATION BEACONS EVERY TWENTY- FIVE MILES

As a part of the Government's elaborate program for developing commercial aviation during the coming year, the Bureau of Standards is making a model installation of three types of radio aids at College Park, a suburb of Washington—radio telephony from ground to aircraft, the directive radio beacon, and a system of marker beacons.

The beacon towers have been erected and generators and equipment are being assembled. Improvement in the beacon system has been carried out on the laboratory scale; one of the improvements is expected to reduce the use of these beacon signals to the mere watching of a light on the airplane-instrument board.

The marker beacons are small radio transmitters to be placed every 25 miles to act as milestones to tell the aviator how far he has flown.

It is expected that the actual installations en route may be delayed somewhat, due to the fact that the commercial aviation program carries a limited appropriation for aids to navigation, and it is evidently the present intention to install lights and other visible markers before intensively going in for radio aids.

A well known public service official recently remarked that radio had taken the place of the saloon.

JAP SUPER-STATION TO BE RUSHED

More light on the building of the great Japanese station—to be one of the most powerful in the world and for communication with Europe and maybe America—was contained in a dispatch from H. T. Goodier, our consul at Nagoya.

The station will be built by the Telefunken Company of Germany and will be located at Isami-mura, not a great ways from Yokohama and Tokio. The equipment will be modern in every respect and the installation is expected to be completed at the earliest possible time.

NEW LAKES BEACON

A radio beacon has been established at Thunder Bay Island Light Station, on the west side of Lake Huron, Mich. It sounds every 120 seconds in groups of two dashes for 60 seconds and silent for 60 seconds.

KOP COMES BACK UNDER A NEW NAME

Disguised by a few false whiskers in the shape of call letters, WWPR, the Detroit Police Department, whose old station was famous for its designation KOP, has again been licensed to broadcast. In fact, four stations were authorized to go on the air this week, bringing the total numbers up to 621.

Never put oil or vaseline on the switches of a set.

?

Questions and Answers

?

By FORBES W. VAN WHY, A. I. E. E., A. I. R. E.,
Technical Editor Radio Doings

QUESTION—E. C. B., Colton, Calif.: Am a constant reader of Radio Doings. I have two New York Coil Company supers, and they do not seem satisfactory, unstable, no volume. Is that characteristic of that type of set, or is it in the individual set? Could I use the parts on a Best 45,000 cycle set, or would the regular Best parts be best?

ANSWER—The New York Coil Company supers give good results if carefully balanced and prints and specifications are exactly followed. Any attempt to incorporate personal ideas in supers often results in poor reception. Trouble is undoubtedly within your own receiver, and I suggest you check all wiring and parts carefully. The Best 45,000 super is excellent, and if you do decide to build one of them, use the parts prescribed by Mr. Best, and adhere strictly to his specifications, and you will have a first class receiver. Do not advise using foreign parts on another type of receiver, due to the fact that in this particular cast, as well as many others, the values and units of equipment to be used have been predetermined by long and vigilant laboratory experiments. You should, therefore, avail yourself of these findings.

QUESTION—Leo McColgan, Oroville, Calif.: Would like very much to use a power tube UX 112 in a 6-tube Neutrowound receiver, one of the older models, using 3 stages of transformer coupling on audio frequency, and wish to know if I should do away with the last stage and the power tube used in what is now the 2nd audio, or should I leave it as it is and use all three stages, the last as a power tube? Also, what results could I expect?

ANSWER—We do not suggest changing the general continuity of the neutrowound circuit. It is a good circuit, especially for volume, the writer having had considerable experience with this receiver. Since you already have good volume, we do not see what there is to be gained by putting in a power tube. If you actually desire more volume, the proper thing is to install power tube in last audio stage. Bear

in mind that all you can expect is more volume, and NOT more distance.

QUESTION—R. S. Smith, Los Angeles, Calif.: Will a steel non-corrosive clothes line wire be as efficient as enameled wire of single conductor? Am I right in thinking that single wire is better than stranded, because it has less resistance? Please advise what kind of ground is best for in Australian stations. Is a ground using two dead "B" batteries efficient?

ANSWER—The steel wire does not have the conductivity of copper wire and while it may be termed non-corrosive by the dealer, after being subjected to the elements for a short period, will take on a high resistance coating upon its surface. The enameled wire has a protection for its surface. The high frequency current travels upon the surface of a conductor. Therefore, stranded wire is better than a single conductor for high frequency currents, since it offers more surface, or to be exact, more surfaces.

QUESTION—Rex L. Stevens, Cadiz, Calif.: I am contemplating changing a three-tube regenerative set using the peanut tubes, to use the C-301A tubes, and wish to know if this will make it necessary to change the balance of the set or not, also is there an adapter that I can use in the small sockets, in order to use the large tubes? Is such an appliance on the market? Will it be necessary to change voltage also? as now using 4½ volts of "A" battery. Thank you, kindly.

ANSWER—The receiver may be operated with "A" tubes without changing the equipment, other than sockets and increasing the "A" battery to 6 volts. "B" battery should be in accordance with instructions on cartons containing the "A" tubes. At present no adapters are available, whereby large tubes can be adapted to small sockets. In making the change, I suggest installation of large sockets, using adapters in the event you ever desire to use smaller tubes again.

The Woman's Page

By CAREY PRESTON RITTMEISTER

THE FAMILY BUDGET

This beginning of Nineteen Hundred and Twenty-Seven makes appropriate a little about budgets. To the average woman this word is a bugbear; she fears it may mean too great self-denial; or more likely her fear is that through its application she may become stingy and mean. But it is a matter that should be talked over with the man of the house, and his complete co-operation secured if there is to be a successful business administration in your home. At first thought this co-operation would seem sure, but I know that hosts of women find it difficult to hold the man to a stated allowance for his own use, as well as for her use in the house. Either he thinks she should spend less and give him more, or he would have her dress and entertain on the same scale as does the wife of his boss, and if the home manager is unable to manage it on her allowance, charge accounts are encouraged to meet exigencies of special occasions, and debts and obligations on every hand, worry and create dissension. We are told by those who have made a study of the home budget that out of an income of \$200 a month, \$35 should be allowed for rent; \$45 for the table; \$15 for life or health insurance; \$15 for laundry; \$25 for clothing, and \$25 for the man's lunches and carfare; that leaves \$40 for miscellaneous expenditures. The rent estimate might be raised to \$50, and applied on the purchase of a home, which would be one method of saving. But if \$35 is simply going out in rent, the additional amount should be placed in the savings bank; or, what is really as safe a method of

saving, with a better rate of interest, invested in building and loan certificates. It is a simple thing to investigate the standing of any company offering this method of saving, through the State authorities, who supervise the operations of these concerns, and this is always advisable. One very simple method of budgeting for the woman who dislikes keeping accounts, is to have a series of envelopes with labels—"Rent," "Table," "Insurance," and so on—the amount allowed for each item to be placed in each envelope on payday. I have known women who have carried on very successfully in this way, but the budget book presents a system of checking back on yourself, which is invaluable.

SALAD DRESSING

Now for the salad dressing which I promised last week. I believe you will like it. Once in my home, I entertained a famous chef, who was greatly intrigued by the dressing on the salad, so I gave him the recipe, and since then he has made it one of the features of his service.

Use the best olive oil; the economical way is to purchase a gallon can. Mix 3 tablespoons of olive oil with 2 tablespoons of granulated sugar, $\frac{1}{2}$ teaspoon salt and $\frac{1}{2}$ teaspoon paprika. Scrape the surface of an onion in such a way that 10 or 12 drops of the juice will drop into the mixture. Then add a few drops at a time, stirring constantly, a fine quality of vinegar, or what is better, lemon juice, until the oil mixture and acid are thoroughly blended into a smooth dressing, about the thickness

The Woman's Page —Continued

of syrup. This is a splendid dressing for head lettuce, endive, tomatoes and for a grape-fruit salad.

AN ITALIAN DISH

For this week's simple dinner menu, let me give you a splendid recipe for Italian spaghetti with meat balls. With a side dish of puree of spinach, this makes a complete meal. To make the meat balls, take 1½ lbs. ground round of beef, and ¼-lb. ground fresh pork. To this add 1 tablespoon garlic and 2 tablespoons parsley, both chopped fine. Add salt and pepper, 2 cups bread crumbs (take day old bread and grate the inside) and 1 cup grated Parmesan cheese. Add 2 raw eggs and work all together with the hands until very light. Then roll into balls the size of an egg and fry in olive oil until an appetizing brown. Place the meat balls in deep kettle and pour all the oil and scraps left in the frying into the kettle. Then add strained tomato juice. It is better to purchase the best grade of canned tomatoes—2 cans—and work through a collendar. Simmer slowly about 1½ hours. In a large kettle have boiling water and 15 minutes before serving the dinner drop in the spaghetti; the Italian way is to serve the long spaghetti unbroken. Fifteen minutes' cooking should be enough. Drain and serve on hot plates, with 2 meat balls and a ladle of the tomato sauce, over all a sprinkling of Parmesan cheese. Serve before this dish, ripe olives and hearts of celery, then a jello or a prune whip for dessert.

THEY ACT ALIKE

Never depend upon your husband, your child, your cook, or your radio to "show off" at the critical moment when you most want them to.—Exchange.



VALLEY B Power Unit

The Valley "B" Power Unit takes the place of "B" batteries by providing plate voltage from the house lighting circuit for any radio receiving set of twelve tubes or less. For Reliable reception, this unit operates with the famous Raytheon Tube. Priced to sell at \$50, complete.

Valleytone Model No. 52

The small cut below shows the Valleytone Radio Receiver, 5-tube, tuned radio frequency. Two dial control. Wired so that the use of the power tube is optional. Price \$96.00.



VALLEY ELECTRIC CO.
ST. LOUIS, MO.

Pacific Coast Representative

Western States Sales Co.
286 Chronicle Building, San Francisco
445 San Fernando Bldg., Los Angeles

Distant Stations for the DX Fan

| Call Letters | Location | W. L. Meters | Power Watts | Schedule of Concert and Dance Music |
|--------------|----------------------|--------------|-------------|-----------------------------------------------|
| CYL | Mexico City | 480 | 1000 | Sun., Tues., Fri., 8 to 9 p. m. |
| WJAD | Waco, Texas | 353 | 200 | Tues., Wed., Fri., 6 to 8 p. m. |
| KPRC | Houston | 297 | 500 | Sat. and Wed., 8 to 10 p. m. |
| KFXF | Colorado Springs | 250 | 500 | Mon., Tues., Sat., 7:30 to 9:30 p. m. |
| KFBU | Laramie, Wyo. | 270 | 500 | Mon., Wed., Fri., 8 to 10 p. m. |
| WHB | Kansas City | 366 | 500 | Sun., 8 to 11 p. m. Tues., 5 to 8 p. m. |
| WDAF | Kansas City | 366 | 1000 | Daily except Sun., 9:30 to 11 p. m. |
| WHO | Des Moines | 526 | 5000 | Daily except Sat. and Wed., 9 to 10 p. m. |
| KMOX | St. Louis | 280 | 1500 | Daily except Sun. and Thurs., 1 to 9 p. m. |
| KSD | St. Louis | 545 | 500 | Thurs., Fri. and Sat., 7 to 9 p. m. |
| WGN | Chicago | 303 | 1000 | Daily except Sun., 8 to 9 p. m. |
| WLIB | Chicago | 303 | 4000 | Daily except Sun., Mon., Wed., 9 to 11 p. m. |
| WHT | Chicago | 238 | 3500 | Daily except Sun. and Mon., 8 to 10 p. m. |
| WQJ | Chicago | 447 | 500 | Daily except Sun. and Mon., 8 to 12 p. m. |
| WBBM | Chicago | 226 | 1500 | Daily except Mon. and Fri., 6 to 10 p. m. |
| WLS | Chicago | 345 | 5000 | Wed., Fri., Tues., 4 to 10 p. m. |
| KOIL | Council Bluffs | 306 | 500 | Daily except Sun. and Wed., 4 to 9 p. m. |
| AT9 | Fort Bragg, N. C. | 434 | 750 | Tues., Thurs., Sat., 5 to 7 p. m. |
| WCX | Detroit | 517 | 5000 | Daily except Sat. and Sun., 4 to 8 p. m. |
| WWJ | Detroit | 353 | 1000 | Daily except Sat. and Sun., 4 to 5 p. m. |
| WOOD | Grand Rapids | 242 | 1000 | Fri. and Sat., 7 to 10 p. m. |
| WGHP | Detroit | 270 | 1500 | Wed., 5 to 7 p. m. Thurs. and Fri., 7-9 p. m. |
| WJR | Pontiac | 517 | 5000 | Mon., Wed., Sat., 7 to 10 p. m. |
| WKRC | Cincinnati | 326 | 1000 | Sun., Tues., Thurs., Sat., 8 to 10 p. m. |
| WLW | Cincinnati | 422 | 5000 | Sat., 5 to 6 p. m. Mon., 6 to 8 p. m. |
| WAIU | Columbus, Ohio | 294 | 750 | Fri., 4 to 7 p. m. Mon., 6 to 8 p. m. |
| WGR | Buffalo | 319 | 750 | Mon and Fri., 6 to 10 p. m. |
| CFCF | Montreal | 411 | 2000 | Mon. and Fri., 5:30 to 8:30 p. m. |
| CFCA | Toronto | 356 | 2000 | Wed., 8 to 9 p. m. |
| CKAC | Montreal | 411 | 1500 | Tues. and Thurs., 6 to 9 p. m. |
| WMBF | Miami, Fla. | 384 | 500 | Daily, 5 to 10 p. m. |
| WGHB | Clearwater, Fla. | 266 | 500 | Daily except Sun., 5:30 to 7 p. m. |
| WGBU | Tulford, Fla. | 278 | 500 | Daily except Sun., 5 to 10 p. m. |
| PWX | Havana | 400 | 1000 | Daily except Thurs., 5 to 8 p. m. |
| WOO | Philadelphia | 508 | 500 | Daily, 4:30 to 5:30 p. m. |
| WIP | Philadelphia | 508 | 500 | Tues., Thurs., Sat., 7 to 9 p. m. |
| WBAL | Baltimore | 246 | 1000 | Mon., Tues., Thurs., Fri., 5 to 9 p. m. |
| WPG | Atlantic City | 300 | 500 | Daily, 6 to 8 p. m. |
| WAHG | Richmond Hill, N. Y. | 316 | 500 | Mon., Wed., Fri., 4:30-7 p. m. Sat., 9 p. m. |
| WHAZ | Troy, N. Y. | 379 | 1000 | Mon., 5 to 7:30 p. m. |
| WEAF | New York City | 491 | 5000 | Daily except Sun., 3 to 9 p. m. |
| WRNJ | New York City | 374 | 500 | Sat., 9 to 10 p. m., DX hour. |
| WOR | Newark, N. J. | 405 | 500 | Daily except Sun., 7 to 8 p. m. |
| WJZ | Boundbrook, N. J. | 454 | 5000 | Daily except Sun., 1 to 3 p. m. |

BOSCH RADIO



Do you get these stations?

BOSCH DOES

Reiman Wholesale
Electric Co.

218 to 228 East Third St.

Los Angeles

MEtropolitan 4280

WHOLESALE ONLY

Filter-Flex

LAMP SOCKET RADIO

This Radio Entirely Eliminates Both A and B Batteries
It Has More Power and Better Tone Than Any Other Set That
Sells at Anywhere Near Its Price



No
Batteries

No
Eliminators

No
Hum

THIS MODEL

\$125

Complete
Nothing extra to
buy and practi-
cally no upkeep.

Here
It
Today

Call On Any of
the Below
Mentioned
Dealers for a
Demonstration.

Table
Model
Complete **\$98.50**

LOS ANGELES

Barnes Music Co.
332 S. Broadway
Martin Music Co.
734 S. Hill St.
Clark Radio Shop
9114 S. Vermont
C. & G. Electric Co.
1501 W. Santa Barbara
Clark Radio Store
8154 S. Vermont
De Hoop Bros.
5213 S. Broadway
Davis Radio
2817 S. Main St.
No Battery Radio Co.
2708 S. Figueroa
Super Radio Shop
2507 W. Slauson
John A. Willerth
729 W. Ninth St.
Max Tobias
2708 S. Figueroa
Nilsson & Nelson
4320 S. Avalon Blvd.
Tivoli Radio
4204 Central Ave.
Atwater Radio
3208 Glendale Blvd.
F. & H. Radio Co.
5011 York Blvd.

HOLLYWOOD

Cat's Meow
6653 Hollywood Blvd.
Hollywood Elec. Shop
6656 Hollywood Blvd.
ANAHEIM—Dunham & Knipe
162 West Center
BELL—Baker Ave. Elec.
910 Baker Ave.
BELLFLOWER—Bellflower Elec.
905 Summeret
COVINA—L. T. Hammersly
Citrus Ave.
CULVER CITY—Vian & Childress
6802 Washington Blvd.
DOWNEY—Darnell Elec. Shop
109 N. Crawford St.
GLENDALE—J. A. Newton Elec.
154 S. Brand Blvd.
HERMOSA BEACH—C.
Alexander
530 Camino Real
INGLEWOOD—Reliable
Radio Sales
114 Market St.
LONG BEACH—McCrery
Music Co.
216 Pine Ave.

LONG BEACH—Mattson
Music Co.
329 American Ave.

MONTEROSE—Montrose
Radio Elec.
651 Honolulu

PASADENA—Radio Doc.
1581 E. Walnut St.

PASADENA—Thomas &
Summersville
41 N. Broadway

PUENTE—L. T. Hammersly

SANTA ANA—Hawley Sporting
Goods Co., 305 S. Sycamore

SANTA BARBARA—Dinsmore
Radio, Olive Mill Rd.
SAN DIEGO—S. H. Metcalf
329 Plaza

SANTA MONICA—A. E. Jackson
Music, 1447 Third St.

SANTA PAULA—Kit Carson
Batt. & Ign. Serv., 300 E. Main

VENTURA—Ventura Batt. &
Ign. Wks.

VENTICE—Coast Elec. Co.
45 Market St.
WHITTIER—Whittier Hdws. Co.
114 S. Greenleaf

SUNDAY TIME TABLE

ALL TIME TABLES ADJUSTED
TO PACIFIC TIME
(X) Indicates Station is On the Air

| 10-12 A.M. | | 12-2 P.M. | | 2-4 P.M. | | 4-6 P.M. | | STATIONS | | | 6-8 P.M. | | 8-10 P.M. | | 10-12 P.M. | | | | | | | | | | | | | | | | | |
|-------------|-------------|-------------|-------------|-------------|------------|-----------|-----------|-----------|-----------|-----------|-----------|-----------|-----------|-----------|------------|-------|--------------------|----------------|-------------------|-----------|-----------|-----------|-----------|-----------|-----------|-----------|------------|-------------|-------------|-------------|--------------|--|
| 10 00-10 30 | 10 30-11 00 | 11 00-11 30 | 11 30-12 00 | 12 00-12 30 | 12 30-1 00 | 1 00-1 30 | 1 30-2 00 | 2 00-2 30 | 2 30-3 00 | 3 00-3 30 | 3 30-4 00 | 4 00-4 30 | 4 30-5 00 | 5 00-5 30 | 5 30-6 00 | CALL | Wave Length Meters | Power In Watts | STATION | 6 00-6 30 | 6 30-7 00 | 7 00-7 30 | 7 30-8 00 | 8 00-8 30 | 8 30-9 00 | 9 00-9 30 | 9 30-10 00 | 10 00-10 30 | 10 30-11 00 | 11 00-11 30 | 11 30-12 00* | |
| X | X | X | X | X | | | | | | | | | | | | KHJ | 405 | 500 | Los Angeles | | X | X | X | X | X | X | X | X | | | | |
| X | X | X | X | | | | | | X | X | | | | | | KFI | 467 | 4000 | Los Angeles | X | X | X | X | X | X | X | X | X | X | X | | |
| X | X | X | X | X | | | | | | | | | | | | KTBI | 294 | 750 | Los Angeles | X | X | X | X | X | X | X | X | X | X | X | | |
| X | X | X | | | | | | | X | X | X | X | | | | KFSG | 275 | 500 | Los Angeles | X | X | X | X | X | X | X | X | X | X | X | | |
| X | X | X | X | | | | | X | X | X | X | | | | | KNX | 337 | 750 | Los Angeles | X | X | X | X | X | X | X | X | X | X | X | | |
| X | X | X | X | | | | | | | | | | | | | KGEF | 517 | 1000 | Los Angeles | | | | X | X | X | | | | | | | |
| X | X | X | X | | | | | X | X | | | | | | | XKNRC | 238 | 1000 | Santa Monica | X | X | X | X | X | X | X | X | X | X | X | | |
| | | | | | | | | | | | | | | | | KFWB | 252 | 500 | Hollywood | | | | | | | X | X | X | X | | | |
| | | | | | | | | | | | | | | | | KMTR | 370 | 500 | Hollywood | X | X | X | X | X | X | X | X | X | X | X | | |
| | | | | | | | | | | | | | | | | KFQZ | 226 | 500 | Hollywood | | | | X | X | X | X | X | X | X | X | X | |
| X | X | X | X | | | | | | | | | | | | | KPSN | 315 | 1000 | Pasadena | X | X | X | X | X | X | X | X | X | X | X | | |
| X | X | X | X | | | | | | | | | | | | | KPPC | 229 | 50 | Pasadena | X | X | X | X | X | X | X | X | X | X | X | | |
| | | | | X | X | | | | | | | | | | | XKFWO | 211 | 250 | Catalina | X | X | X | X | X | X | X | X | X | X | X | | |
| X | X | X | X | | | | | | X | X | | | | | | KFWC | 295 | 200 | San Bernardino | | | | | | | X | X | X | X | X | X | |
| | | | | | | | | | X | X | X | X | X | X | | KFON | 233 | 750 | Long Beach | X | X | X | X | X | X | X | X | X | X | X | X | |
| | | | | | | | | | | | | | | | | KFVD | 205 | 500 | Venice | | | | | | | | | X | X | X | X | |
| | | | | | | | | X | X | | | | | | | KFSD | 246 | 1000 | San Diego | X | X | X | X | X | X | X | X | X | X | X | X | |
| | | | | | | | | | | | | | | | | KFCB | 390 | 50 | San Diego | | | X | | | | | | | | | | |
| X | X | | | | | | | X | X | X | X | | | | | KPO | 428 | 1000 | San Francisco | X | X | X | X | X | X | X | X | X | X | X | X | |
| | | | | | | | | | | | | | | | | KFRG | 268 | 50 | San Francisco | X | X | | | X | X | X | X | X | X | X | X | |
| | | | | | | | | | X | X | X | X | X | | | KGTT | 207 | 50 | San Francisco | | | | | X | X | X | X | X | X | X | X | |
| | | | | X | X | | | | | | | | | | | KFWI | 250 | 500 | San Francisco | X | X | X | X | X | X | X | X | X | X | X | X | |
| X | X | X | X | X | | | | | | | | | | | | KQW | 333 | 500 | San Jose | | | | X | X | X | X | X | X | X | X | | |
| X | X | X | X | X | | | | | | | | | | | | KTAB | 303 | 1000 | Oakland | | | X | X | X | X | X | X | X | X | X | | |
| | X | X | X | X | | | | | X | X | | | | | | KGO | 361 | 4000 | Oakland | X | X | X | X | X | X | X | X | X | X | X | X | |
| | | | | | | | | | | | | X | X | | | KFUS | 256 | 50 | Oakland | | | | | | | | | | | | | |
| X | X | | | | | | | | | | | | | | | KRE | 256 | 100 | Berkeley | | | | | X | X | X | X | X | X | X | X | |
| | | | | | | | | | | | | | | | | KFWH | 254 | 100 | Eureka | X | X | X | X | X | X | X | X | X | X | X | X | |
| | | | | | | | | | | | | | | | | KGU | 270 | 500 | Honolulu | | | | | | | | | X | X | X | X | |
| | X | X | X | | | | | | | | | | | | | KJR | 384 | 20M | Seattle | | | | X | X | X | X | X | X | X | X | X | |
| X | X | X | X | X | X | X | | | | | | | | | | KOMO | 306 | 1000 | Seattle | X | X | X | X | X | X | X | X | X | X | X | X | |
| | | | | | | | | | | | | | | | | KMO | 250 | 500 | Tacoma | | | | X | X | X | X | X | X | X | X | X | |
| | | X | X | X | X | | | | | | | | | | | KGW | 491 | 1000 | Portland | | | | X | X | X | X | X | X | X | X | X | |
| | | | | | | | | | | | | | | | | KOIN | 319 | 1000 | Portland | | | | X | X | X | X | X | X | X | X | X | |
| | | | | | | | | | | | | | | | | CFAC | 435 | 1200 | Calgary | X | X | X | X | X | X | X | X | X | X | X | X | |
| X | X | X | X | | | | | | | | | | X | | | KOA | 322 | 5000 | Denver | X | X | X | X | X | X | X | X | X | X | X | X | |
| X | X | | | | | | | | | | | | | | | KLZ | 384 | 500 | Denver | X | X | X | X | X | X | X | X | X | X | X | X | |
| X | X | | | | X | X | | | | | | | | | | KSL | 303 | 1000 | Salt Lake City | | | | X | X | X | X | X | X | X | X | X | |
| | | X | X | X | X | | | | | | | | | | | WOAW | 526 | 1000 | Omaha | | | X | X | X | X | X | X | X | X | X | X | |
| | | X | X | | | | | | | | | | | | | XWGY | 390 | 5000 | Schenectady | X | X | X | X | X | X | X | X | X | X | X | X | |
| | | | | | | | | | | X | X | X | X | X | | XWOA | 394 | 5000 | San Antonio | X | X | X | X | X | X | X | X | X | X | X | X | |
| | X | X | | | | | | | | X | X | X | X | X | | XVVO | 375 | 1000 | B. Ist. w. O. dia | X | X | X | X | X | X | X | X | X | X | X | X | |
| | | | | | | | | | | | | | | | | KYW | 536 | 3500 | Chicago | | | | X | X | X | X | X | X | X | X | X | |
| | | | | | | | | | | X | X | X | X | | | WLIB | 303 | 4000 | Chicago | | | | X | X | X | X | X | X | X | X | X | |
| | | | | | X | X | | | | | | | | | | KDKA | 309 | 1000 | Pittsburgh | | | | X | X | X | X | X | X | X | X | X | |
| | | | | | | | | | | | | | | | | KMOX | 280 | 5000 | St. Louis | X | X | X | X | X | X | X | X | X | X | X | X | |
| | | | | | X | X | X | X | | | | | | | | WLW | 422 | 500 | Cincinnati | | | X | X | X | X | X | X | X | X | X | X | |

Authorized Dealer for Fada and Crosley Sets

Sales, Service and Exchange

Battery Charging, 50c—Tubes Rejuvenated Free

DAVIS RADIO CO.

Time Payments if Desired.
Open Evenings and Sundays

Westmore 6948
2817 S. Main St., Los Angeles

MONDAY TIME TABLE

ALL TIME TABLES ADJUSTED TO PACIFIC TIME (X) Indicates Station is On the Air

| STATIONS | Wave Length Meters | CALL | Power in Watts | STATION |
|------------|--------------------|-------------|----------------|-------------------|
| 10-12 A.M. | 10-30-11-30 | X K F 1 | 467 4000 | Los Angeles |
| 10-12 A.M. | 11-30-12-30 | X K H J | 405 500 | Los Angeles |
| 12-2 P.M. | 12-00-12-30 | X K N X | 337 750 | Los Angeles |
| 12-2 P.M. | 12-30-1-00 | X K T B I | 294 750 | Los Angeles |
| 2-4 P.M. | 1-30-2-00 | X K N R C | 238 1000 | Santa Monica |
| 2-4 P.M. | 2-30-3-00 | X K F W B | 252 500 | Hollywood |
| 2-4 P.M. | 3-00-3-30 | X K M T R | 370 500 | Hollywood |
| 2-4 P.M. | 3-30-4-00 | X K F Q Z | 228 500 | Hollywood |
| 4-8 P.M. | 4-00-4-30 | X K P S N | 315 1000 | Passadena |
| 4-8 P.M. | 4-30-5-00 | X K F W C | 295 100 | San Bernardino |
| 4-8 P.M. | 5-00-5-30 | X K F O N | 233 750 | Long Beach |
| 4-8 P.M. | 5-30-6-00 | X K F V D | 205 500 | Venice |
| | | X K F S D | 246 1000 | San Diego |
| | | X J A M B | 301 100 | Tia Juana, Mex. |
| | | C Y H | 311 1000 | Monterey, Mex. |
| | | X K S M R | 283 100 | Santa Monica |
| | | X K F F F | 214 25 | Oxnard, Cal. |
| | | X K P O | 428 1000 | San Francisco |
| | | X K B S | 220 5 | San Francisco |
| | | X K F R C | 288 50 | San Francisco |
| | | X K F W I | 250 500 | San Francisco |
| | | X K G T I | 207 50 | San Francisco |
| | | X K Q W | 333 500 | San Jose |
| | | X K T A B | 303 1000 | Oakland |
| | | X K G O | 361 4000 | Oakland |
| | | X K Z M | 240 100 | Oakland |
| | | X K L X | 508 500 | Oakland |
| | | X K F U S | 256 50 | Oakland |
| | | X K R E | 256 100 | Berkeley |
| | | X K M J | 234 50 | Fresno |
| | | X K F W H | 254 100 | Eureka |
| | | X K F B K | 535 100 | Sacramento |
| | | X K F O A | 454 1000 | Seattle |
| | | X K J R | 384 20M | Seattle |
| | | X K M O | 306 1000 | Seattle |
| | | X K H Q | 394 1000 | Spokane |
| | | X K M O | 250 500 | Tacoma |
| | | X K O W | 285 500 | Walla Walla |
| | | X K G W | 491 1000 | Portland |
| | | X K F J R | 283 50 | Portland |
| | | X K F E C | 248 50 | Portland |
| | | X K O I N | 319 1000 | Portland |
| | | X K O A C | 280 500 | Corvallis, Ore. |
| | | X K F A C | 436 2000 | Calgary |
| | | X K S L | 300 1000 | Salt Lake City |
| | | X K O A | 322 5000 | Denver |
| | | X K L Z | 384 500 | Denver |
| | | X K W O A W | 526 1000 | Omaha |
| | | X K W O C | 494 5000 | Davenport |
| | | X K V O O | 375 1000 | Briston, Okla. |
| | | X K W O A I | 394 5000 | San Antonio |
| | | X K W B A P | 478 1500 | Fort Worth |
| | | X K F K X | 288 5000 | Hastings |
| | | X K W Y | 636 3500 | Chicago |
| | | X K D K A | 309 1000 | Pittsburgh |
| | | X W J Z | 454 1000 | New York |
| | | X W G Y | 380 5000 | Schenectady |
| | | X K M O X | 280 5000 | St. Louis |
| | | X K T H S | 376 1000 | Hot Springs, Ark. |

YOU

cannot afford to be without one or the other. Some people have a hay-wire idea that the radio has supplanted the phonograph.

TODAY, on account of the newly developed electrical reproducing phonograph, more people than ever are changing their ideas regarding the phonograph.

HEAR real music whenever you wish, without regard to season or hour. Music to meet the mood of the moment. Dance music when you want it. Enduring operas sung and played by famous artists. Hear the stirring swell of great symphony orchestras.

ALL THIS is now possible without buying the new high-priced electrical reproducing phonograph! You who have an old phonograph and a modern radio receiver can now replace the old phonograph arm with the VOLUPHONE electrical reproducer and get the same wonderful results at a nominal cost! No changing or re-wiring of your radio set is necessary.

ASK your dealer for further details and a demonstration.

"PALS"

your
phonograph
new or old
and
your radio
are just that



Manufactured by
VOLUPHONE
Manufacturing Co.

133 Venice Boulevard
Los Angeles, Calif.
Phone WEstmore 5975

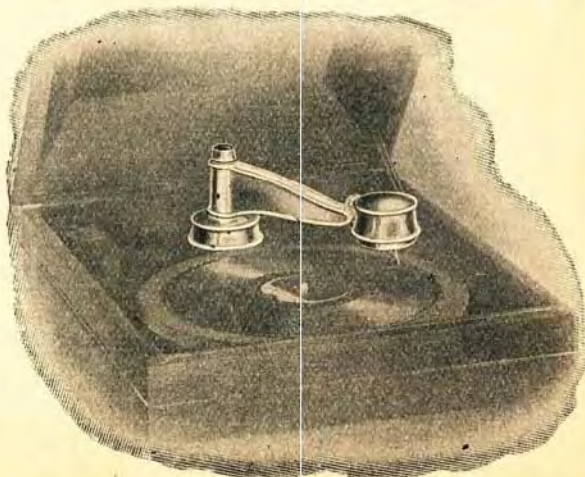
Distributors:

**Yale Radio
Electric Co.**

1111 Wall Street
Phone WEstmore 3351
and

Illinois Electric Co.

315 So. San Pedro St.
Phone VAndike 1381
Los Angeles, Cal.



We Have the Vesta Perfected Radio Units

In keeping with the degree of perfection attained by makers of Radio Receiving Instruments, Vesta has improved the accessories, which are, in fact, the most important parts of Radio. A radio instrument may be the finest made but it is *only as good* as its tubes and batteries. These Vesta Units will make poor sets good and good sets better.

We urge all radio owners—in the interest of better reception and economy in operation—to come and see this new development in the essential units.



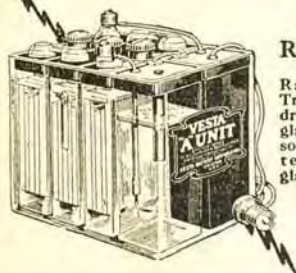
Vesta X-201-A \$2.00

Vesta 199 \$2.25

VESTA QUALITY TUBES Non-Microphonic

Now you can enjoy radio reception without microphonic noises. The plate grid filament is bridged together protecting the delicate paper—insuring a tube in the owner's hands as perfect as it left the factory.

Distributed by The Leading Radio Jobbers



VESTA RADIO "A" UNIT

Radio "A" Battery, Trickle Charger and Hydrometer ALL IN ONE glass case. See water and solution level and battery condition at a glance.

Two capacities
\$25 and \$27.50

VESTA TRICKLE CHARGER \$10

Every Radio Battery needs this trickle charger. Connects to A.C. light socket—keeps battery fully charged at all times. May be left on all the time. Costs only 1-10 cent per hour to operate.



—Vesta for Vitality—

Pacific Coast Prices on "A" Units: \$26.50 and \$29.00, Respectively

Trickle Charger, \$10.50

McCLELLAND-FELTHOUSE CORPORATION

Factory Representatives

1358-60 S. Figueroa St.
Los Angeles
Tel. WEStmore 5586

515-517 Eddy Street
San Francisco
Tel. Franklin 6226

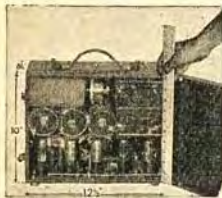
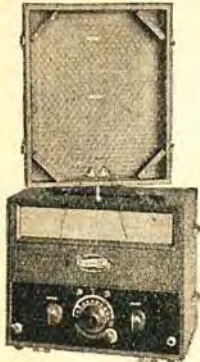
\$70

*Without
Accessories*



\$89.25

Complete



Portable "5"

*Clear Tone—Selectivity—Volume—
Distance—at an exceptionally
low price*

SMALL AND COMPACT

The Trav-Ler is finished in attractive black leatherette — 10" x 12½" — weight 24 pounds. Single dial control; five tubes; spring base sockets; built-in loud speaker; 2 stages of radio frequency; 1 detector; a stage of audio amplification; phone jack and loop aerial are some of the many features of the Trav-Ler Portable. All parts are standard and easily obtainable.

A REMARKABLE PORTABLE AT A LOW PRICE
We guarantee and insure your satisfaction

Sold by the following dealers:

LOS ANGELES
McWhorter Radio.....8226 S. Vermont
Sunset Electric.....1568 Sunset Blvd.
Pico Radio.....4505 W. Pico
Karyl Radio.....2019 West 7th St.
Clark Radio.....9114½ S. Vermont

HOLLYWOOD
C. D. Husted.....7300 Sunset Blvd.

HUNTINGTON PARK
Smith Music Shop.....102 E. Florence

CULVER CITY
Culver City Radio.....6716 Washington Blvd.

OCEAN PARK
Marine Radio.....122 Marine St.
Ocean Park Garage.....171 Pier Ave.

PASADENA
Dix Radio Shop.....1239 E. Green St.

GLENDALE
Superior Radio.....102 W. Broadway

SANTA MONICA
F. J. Bobsene.....421 Santa Monica Blvd.
Warren Radio.....1548 17th St.

LANKERSHIM
W. L. Bain.....5241 Lankershim Blvd.

HERMOSA BEACH
Radio Music.....1320 Hermosa

SAN DIEGO
Nelson Radio.....526 E St.
United Radio.....2807 University

Distributed by

HERBERT H. HORN

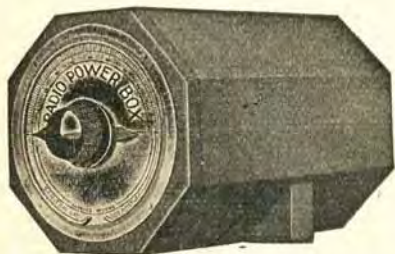
1629 So. Hill St.

Phones: WEStmore 1713-1543

Los Angeles

Distance
AND
Selectivity!
ON YOUR SUPER-HETERODYNE
YOU GET BOTH
WITH A
RADIO POWER BOX
RESULTS GUARANTEED

Use the Radio Power Box One Week on the Radiola Semi-Portable, 24, 25, or 26 Super-Heterodyne, then if you are not satisfied, return the Box and the purchase price will be refunded.



MODEL No. 24

This model built for Radiola and other types of Super-Heterodynes.

Now \$6.00



DE LUXE MODEL No. 25

This model built exclusively for Radiola 25 Super-Heterodyne

Now \$7.00

Sold Direct to Set Owners Only

Mail Orders Given Immediate Attention

THE SANTEE CO.

216 Calo Building
443 South San Pedro Street

Telephone TUCKER 4951
LOS ANGELES, CAL.



Rear view above shows large compartment with ample space for batteries, battery charger, or battery eliminator, which are entirely concealed from view. Back is open for ventilation of batteries.



(Pat. Applied For)

Model 200, with 22-inch
Cone Loudspeaker



Above is shown the Cone Loudspeaker, with its Panel, which is quickly and easily removable, allowing access to all batteries, battery charger, battery eliminator, or other equipment and wiring.

Model 200

\$35

Console with Cone
Loudspeaker
Ready for Set and
Batteries

This Windsor Cone Loudspeaker Console is equipped with a 22-inch Windsor Cone Loudspeaker. Its top is 30 in. x 17 in. and is 29 in. high. The battery shelf provides ample space for batteries, charger, battery eliminator and other equipment. Beautifully finished in either Mahogany or Walnut color.

A Revelation in Radio Reproduction

Model 210
22-inch Cone
Loudspeaker
with Panel and
easel back

\$18⁰⁰



(Pat. applied for)

beauty, just as it entered the microphone.

• • •

This 22-inch Windsor Cone Loudspeaker will reproduce the softest crooning lullaby in a softly lighted room, or the full throated march music of a band in an auditorium—both with perfect fidelity of sound and tone. The Windsor Cone Loudspeaker Console is the greatest value in the world of radio. When compared with the average cost of cone-type loudspeakers of even similar size, the cost of the complete Windsor—cone loudspeaker and console—is amazingly low.

• • •

The Windsor Cone and Horn Loudspeakers, combined with attractive pieces of furniture in many models, are being demonstrated by recognized dealers everywhere. Go to your dealer today and examine this astonishing new Cone Loudspeaker Console. If he happens not to have one, write to us and we will tell you the name of the nearest store at which you can see and hear one.

• • •

NOTE TO DEALERS

Write or wire today for details of the highly profitable Windsor selling line.

At last—a cone loudspeaker that reproduces *all* the tones as they are broadcast. From the deep voiced tuba of an orchestra to the softest note of a vocal solo—*every* tone—*every* sound is reproduced in all its

As a piece of furniture, the Windsor Cone Loudspeaker Console is of such manifest high quality and attractive design as to be a welcome addition to any home. Finished in Mahogany or Walnut color.

WINDSOR FURNITURE CO.

World's Largest Manufacturers and Originators of
Loudspeaker Consoles

1420 Carroll Avenue, Chicago, Illinois

Los Angeles Branch: 917 Maple Avenue

R, D, 18

WINDSOR FURNITURE
COMPANY,
Electrical Department,
917 Maple Ave., Los Angeles.
Send me FREE and without
obligation circulars of the Wind-
sor line of Cone and Horn Loud-
speakers combined with pieces of
furniture, and name of nearest
dealer.

Name.....
Address.....
City.....State.....
Dealer's Name.....

**\$5 Down
PUTS A**

PHILCO
SOCKET POWER
In Your Home

FREE DEMONSTRATION
On Your Own Radio Set
Proves These Benefits

. . . clearer, sharper reception. No Hum—No distortion. One switch controls everything. Operates from your electric light current. Eliminates all battery troubles and bothersome recharging.

Installed FREE. Satisfaction GUARANTEED

Other Products We Handle:

Philco Automobile Storage Batteries . . . CeCo Tubes . . . Ray-O-Vac Dry Batteries.
Repair all makes of Storage Batteries, Starters and Generators.

PHILCO SALES & SERVICE Co.

1514 South Hope St. Phone WEstmore 9065

**MAIL THIS
COUPON
or Phone
WE. 9065**

for FREE DEMONSTRATION in your home. It places you under no obligation.

Name _____

Address _____

Make of Radio Set _____

Pemco

Runs Any From the

**Think How Convenient and Economical—
No More Batteries to Fuss With**

Just connect a Pemco to your Radio and forget all about batteries. It runs from either 50 or 60 cycle current. No more battery fuss or bother but full satisfaction all the time, month in and month out. It does not matter what kind of Radio you have—home-made or factory-made—Pemco will give full satisfaction.

And what's more, the original cost of a Pemco will long be forgotten while you are still getting full satisfaction. No more constant decrease in voltage as with batteries.

Distance? Yes, and Quality, Too

There is absolutely no hum or noise with a Pemco. You get a quiet flow of "A" and "B" power that will bring out the full tonal qualities of your set.

The maximum voltage a Pemco delivers to your set makes possible a more constant reception of distance stations. It is like having new batteries all the time. You can always depend upon peak efficiency.

No Switches—All Automatic

There are no switches on a Pemco. Everything is automatic. You use the switch now on your set the same as you always have. Installing a Pemco does not in any way change the wiring of your Radio.

Free Installation—Easy Payments

Any dealer will gladly demonstrate a Pemco on your own set Free. And when you do buy there is no charge whatsoever for installing. Your dealer will arrange the easiest of payments.

Power

Radio Set Light Socket

**See Your Dealer Today or
Mail the Coupon Below**

There is no doubt a Pemco dealer near you. If not, mail the coupon for full information.

Sherman, Clay & Co.
948 Santee St., Los Angeles

Distributors
Pacific Wholesale Radio, Inc.
1320 S. San Pedro, Los Angeles

The Electric Corp.
1050 Santee St., Los Angeles

Pemco



Automatic
"A" and "B"
Power Unit

-----Mail Today-----

PEMCO—(Pacific Coast Factory) 1020 Santa Fe Avenue, Los Angeles.

Gentlemen:

Please send me full information about the wonderful PEMCO A and B Power Unit, without obligation on my part.

Name.....Address.....



Stewart-Warner RADIO

Simplicity of Operation

{ tone - volume - selectivity }

The Stewart-Warner Corporation has designed two radio receiving sets for people who consider simplicity of operation the first requisite of a good radio. One of these, the model 345 pictured here, sells for \$82.50 without accessories. The other, also a six-tube, single dial control receiver, sells at the remarkably low price of \$67.50 . . . probably the lowest price at which it is possible to buy a six-tube, single dial radio of proven performance.

The women in your family will appreciate a radio that is easy to operate...which requires simply the moving of a single dial to bring in the different broadcasting stations. Any Stewart-Warner dealer named in this advertisement will gladly demonstrate either of these receivers in your own home. *Call on one of them today.*

Model 345 -
6 Tubes - 1 dial
\$82.50
Without Accessories
- Reproducer -
Model 415
\$31.50

Hollywood Dealers

BARROWS & CONKWRIGHT
5545 Sunset Blvd.
DORAN'S ELECTRIC SHOP
7515 Sunset Blvd.
DORAN'S ELECTRIC SHOP
8030 Santa Monica Blvd.
GLOW ELECTRIC CO.
5910 Hollywood Blvd.
H. D. HATFIELD & SON
1782 N. Vermont Ave.
MELROSE RADIO SHOP
5693 Melrose Ave.

Southern California Dealers

ALHAMBRA, LeRoy G. Franklin
644 W. Main
ANAHEIM, Bennett's Radio Shop
220 Center St.
ANAHEIM, Dunham & Kalpe
162 W. Center St.
ARTESIA, Wm. B. Hayes
225 N. Main St.
BAKERSFIELD, Stewart-Warner
Sales & Service Station
2427 Chester Ave.
BARSTOW, Barstow Radio Shop
BELLFLOWER, Stewart-Warner
Radio Shop
Pacific and Mayne Sts.
CALEXICO, City Electric Co.
313 Second St.
CHATSWORTH, C. H. Preston & Son
CHINO, Woods Radio Company
413 Sixth St.
CHULA VISTA, Inaspep & Proctor
347 Third Ave.

COLTON, H. C. Bliss
688 S. Seventh St.
COMPTON, Model Electric Co.
138 E. Main St.
CORONADO, Coronado Radio Shop
1011 Orange Ave.
COVINA, Harold R. Houser
115 College St.
CULVER CITY, Culver City Radio & Elec. Co.
6715 Washington Blvd.
EAGLE ROCK, Weaver & King
5112 Eagle Rock Blvd.
EL CENTRO, Bowles & Son
Seventh and Main St.
BREA, Bennett's Radio Shop
129 S. Pomona Ave.
EL SEGUNDO, B. W. McAllister
110 Grand Ave.
EL MONTE, Weaver & King
(El Monte Hdwe. So.)
ENCINITAS, Lee & Rossen
ESCONDIDO, Dietrich's Electric Shop
112 S. Kalmia
FULLERTON, Nelson Music Co.
110 S. Spadra St.
GARDENA, Don Spears
725 W. 165th St.
GLENDALE, Willard Hellman
(Broadway Elec.)
202 E. Broadway
GLENDORA, James M. Reed
HERMOSA BEACH, Calif. Radio & Elec. Store
713 E. Camino Real
HUNTINGTON PARK, H. L. (Radio) King
116 E. Irvington St.

HINES, Van & Jenkins
INGLEWOOD, R. D. Aylesworth
111 N. Market St.
LA BOLLA, Redding & White
7492 La Jolla Blvd.
LA MESA, La Mesa Radio Studio
LANCASTER, E. A. Kneip
BISHOP, Griffith Bros.
LONG PINE, Griffith Bros.
LONG BEACH, Stewart-Warner Sales & Service Station
1118 American Ave.
LONG BEACH, The Electric Radio Co.
1719 E. Anaheim
LONG BEACH, Thomas & Horrell
740 Pine St.
LONG BEACH, Harold A. Niekie
180 Niemo St.
LYNWOOD, Lynwood Elec. Co.
204 N. Long Beach Blvd.
NEWHALL, C. E. Graham
OCEAN PARK, Crescent Tire and Supply Co.
Bay and Main Sts.
OCEANSIDE, Dudley L. Axs
Second St.
ORANGE, Roy Des Larzes
143 N. Glassell St.
OWENSMOUTH, Roy O. Schree
PASADENA, Wyckoff & Verrinder
1447 North Lake St.
PACIFIC BEACH, James R. Ramsey
PALMS, Brickell Radio Elec. Co.
12204 Washington Blvd.
PASADENA, Premier Radio
11 California St.
PASADENA, Premier Radio Co.
Athletic Club Bldg.
PASADENA, DeWilde Radio Laboratory
2048 East Colorado Ave.

PASO ROBLES, R. C. Heaton
PICO, Pico Radio Shop
POMONA, George W. Hiatt
183 E. Third St.
REDLANDS, J. L. Yount
164 W. Citrus Ave.
RIVERSIDE, Frank W. Chaney
596 Market St.
SAN BERNARDINO, Gurr, Smith & Gurr
439 Fourth St.
SAN DIEGO "Radio Smith"
1241 28th St.
"Better Radio"
2855 University Ave.
Glen H. Dutton
3855 Van Dyke
Guy H. Farmer
2723 San Diego Ave.
SAN FERNANDO, Willis Rowe
SAN LUIS OBISPO, Cline Elec. Co.
986 Monterey St.
SAN PEDRO, San Pedro Furn. Co.
228 W. Sixth St.
SANTA ANA, Shafer's Music Store
415 N. Main St.
SANTA BARBARA, Val Felger
732 State St.
SANTA MARIA, Ford & Smart
118 E. Main St.
SANTA MONICA, J. C. Suits
825 Wilshire
SANTA PAULA, The Music Shop
104 W. Main St.
SATICOY, H. H. Wright
Sixth and D Sts.
TAFT, L. H. Bird
616 Center St.
TONOPAH, NEVADA
Tonopah Electric Company
UPLAND, Jay M. Ross
VENICE, Stewart-Warner Radio Studio
1029 Washington Blvd.
WALNUT PARK, Terminal Electric
1606 Seville St.
WESTMINSTER, Martin Engel
WHITTIER, H. C. Oldham
128 S. Greenleaf
WILMINGTON, G. F. Clausung
716 W. Anaheim St.

Los Angeles Dealers

ATWATER RADIO & ELEC. CO.
3208 Glendale Blvd.
CHAPMAN HOUSE SALES CO.
4377-70 S. Figueroa St.
DEAN K. BARRIS
3100 S. Vermont Ave.
Banks Radio Sales & Service
3800 East First St.
BENSON HARDWARE COMPANY
416 South Broadway
BIRONG & BUSHARD
1717 W. Adams St.
Don Finkle
2207 West Jefferson
A. W. COOPER
1315 W. 39th St.
FRANK W. HASBROUCK
6211 S. Vermont
HARRY SAVOY
828 West Jefferson St.
HOLLAND ELECTRIC SHOP
5632 Pasadena Ave.

HINES RADIO
7322 South Broadway
INTERPHONE ELECTRIC CO.
5510 Monte Vista St.
MANCHESTER RADIO CO.
1522 E. Manchester Ave.
MOHAWK BAT. & RAD. CO.
2115 Sunset Blvd.
NILSSON & NELSON
4320 Avalon Blvd.
NORTON & NORTON
2211 N. Broadway
POTTER RADIO SALES CO.
1517 W. 54th St.
CHAS. A. ROBINSON
4502 S. Normandie
RADIO ELECTRIC SHOP
762 S. Vermont Ave.
THAYER ELECTRIC CO.
2908 Whittier Blvd.
VISSER RADIO AND ELEC. CO.
4750 Whittier Blvd.
WEST GATE RADIO & ELEC.
2510 W. Pico St.
WEST STATES ELECT. CO.
4751 South Broadway

Stewart-Warner Products Service Station
{ Wholesale Distributors Stewart-Warner Radio }
1366 South Figueroa Street ~ LOS ANGELES
811 Front Street (near "F") ~ SAN DIEGO



LESLIE ADAMS
Announcer

Los Angeles, California—467 Meters

KFI

4000 WATTS—640 KILOCYCLES
Radio Central Super-Station of Earle C. Anthony, Inc.
1000 S. Hope. Phone WE. 0331. After P. M., WE. 0337
Class "B" 5000-Watt W. E. Sta., Operating on 4000 Watts
ROBERT HURD, Program Manager

DAILY EXCEPT SUNDAY—

5:30 p. m.—Musical Program.
6:15 p. m.—Radiotorial.
6:30 p. m.—Vest Pocket.

MONDAY, WEDNESDAY AND FRIDAY—

KFI Woman's Interest Department—Under the Direction of Agnes White.
10:00 to 10:20 p. m.—Talk on Face and Scalp Hygiene, by Georgia O. George.
10:20 to 10:40 a. m.—Furnishings for the home by Agnes White, director of the Dept.
10:40 to 11:00 a. m.—Betty Crocker—Gold Medal Flour Home Service Talks.
11:10 to 11:30 a. m.—Food talks by Agnes White.

WEEK COMMENCING SUNDAY, JANUARY 9, 1927

SUNDAY, JANUARY 9—

10:00 a. m.—Church services under direction of Los Angeles Church Federation.
2:45 p. m.—Standard Oil Company of California; San Francisco Symphony Orchestra, Alfred Hertz, conductor; KFI, Los Angeles, KPO, San Francisco, and KGO, Oakland.
6:00 p. m.—Program by Russian Academy of Musical Art. Boris Myronoff, piano; Mischa Speigel, violin; Alex. Borrisoff, 'cello.
7:00 p. m.—Aeolian organ recital, Alex. Reilly at the Console.
8:00 p. m.—Packard Classic Hour. Sylvia Zeitlen Rosenthal, concert pianist, Louise Klos Trio.
9:00 p. m.—Bob Bottger and his Venetians Dance Orchestra.
10:00 p. m.—Packard Six Orchestra, Bill Hennessy, director; Dolly MacDonald, soloist; Esther Walker, pianist.

MONDAY, JANUARY 10—

7:00 p. m.—Owen Fallon and his Californians; Starke Sisters (Minnie and Maude).
8:00 p. m.—Recital by Rerenz Steiner, 'cellist; La Verne Beal, pianist.
9:00 p. m.—Program by Robert Hurd and Lilyan Ariel
10:00 p. m.—Program presented by Meiklejohn Bros.

TUESDAY, JANUARY 11—

7:00 p. m.—Paul Howard's Quality Serenaders.
8:00 p. m.—Gattone String Quartet.
9:00 p. m.—Gleaners' Quartet: Thomas Wallace, baritone; Irma Brady, contralto.
10:00 p. m.—Azure Music Club; Glenn Edmunds and his Collegians; Edna Cook.

WEDNESDAY, JANUARY 12—

7:00 p. m.—Ray Fisher's Original Victorians.
7:30 p. m.—Nick Harris, detective stories.
8:00 p. m.—California Petroleum Corporation program; Calpet Orchestra.
9:00 p. m.—Virginia McCoy, contra-contralto; S. A. I. Trio.
10:00 p. m.—Sunset Instrumental Quartet; Dorothy Ruth Miller, pianist; Paul Weber, baritone.

THURSDAY, JANUARY 13—

7:00 p. m.—Program by University of Southern California.
8:00 p. m.—KFI drama hour.
9:00 p. m.—Reinald Werrenrath, internationally famous baritone, presented by Ray Thomas, Inc., Los Angeles, Southern California distributors for Atwater Kent; and Ernest Ingold, Inc., San Francisco, Northern California distributors for Atwater Kent receiving sets. Broadcast simultaneously by KFI, Los Angeles, and KPO, San Francisco.
10:00 p. m.—Johnston and Farrell's Music Box hour, direction of Gene Johnston, with Jim, Jack and Gene Trio, and soloists.

FRIDAY, JANUARY 14—

7:00 p. m.—Program by Paul Roberts and Leslie Adams.
8:00 p. m.—Aeolian organ recital, Alex Reilly at the Console.
9:00 p. m.—Alma Frances Gordon, contralto; Del Monte String Trio; Lilyan Ariel, pianist.
10:00 p. m.—Packard ballad hour; Harry Rowe, baritone.

SATURDAY, JANUARY 15—

7:30 p. m.—Felipe Delgado, Spanish lyric baritone; Edna Clark Muir, pianist.
8:00 p. m.—Program of concert and popular music, Gamut Male Quartet; Mission Bell Orchestra, Chico De Verde, director; Louise Klos, Paul Roberts. Presented by the Los Angeles Soap Company. Broadcast simultaneously by KFI, Los Angeles, and KPO, San Francisco.
9:00 p. m.—Silvertone Quartet and Evelyn Mason Jubilee Quartet, with soloists.
10:00 p. m.—Packard Radio Club.
11:00 p. m.—KFI Midnight Frolic.

(Copyright 1927, Earle C. Anthony, Inc.)

OUR NEW ADDRESS, 407 E. Pico St.—TELEPHONE WE. 1401

HEAR HOW CE CO TUBES IMPROVE RADIO RECEPTION

Let Your Ears be the Judge at any Ce Co Dealer

You'll immediately note the improved clearness in tone. Even distance is increased by these super-sensitive tubes. Your Ce Co dealer will give you the Ce Co tubes made specially for your radio set.

Ce Co Tubes HAD to be best to be
the unanimous choice of these
foremost Radio Engineers

LAWRENCE M. COCKADAY
ARTHUR H. LYNCH
GLENN H. BROWNING
GLENN L. KING

HERMAN BERNARD
GERALD M. BEST
KEITH HENNEY
KENNETH HARKNESS

A. J. Tobey Co.

15th and Hope Sts.

Westmore 4038

Some of the CeCo Dealers in Southern California

LOS ANGELES

J. M. Andrews
209 West 18th St.
Cutler Radio
930 North Western Ave.
Walker Radio
5835 South Vermont
Glen H. Demer
6292 South Vermont
Collins Hardware Co.
3425 South Vermont
H. H. Walker
1323 Venice Blvd.
Philco Sales and Service
1514 South Hope St.
Tivoli Radio Shop
4204 South Central
HOLLYWOOD
Barrows-Conkwright
5545 Sunset Blvd.

Atwater Radio Shop
3208 Glendale Blvd.
Hetzel Radio Service
8303 Santa Monica Blvd.

PASADENA

Thomas & Summerville
41 North Broadway
Webster Electric Garage
100 East Union Ave.
BREA, Bennets Radio
GARDEN GROVE, W. E. Ashley
VAN NUYS, Van Nuys Music Co.
6312 Sherman Way
LA HABRA, C. Perry
117 West Center St.
WHITTIER, Quality Radio
121 North Newlin St.
ANAHEIM, Caverley Radio
217 West Center St.
MONROVIA, Mack Music Co.



D



C



B



A



E



F



G



H



"Uncle John" Daggett
Announcer

Los Angeles, California—405.2 Meters

KHJ

500 WATTS—740 KILOCYCLES

Times Bldg., First and Broadway, Los Angeles
Owned and Operated by Los Angeles Times

JOHN S. DAGGETT, Manager and Program Announcer
Phone MET. 0700

"Kindness, Happiness and Joy"

NIGHTLY EXCEPT SUNDAY AND MONDAY—

7:30 p. m.—Scripture Reading.

DAILY EXCEPT MONDAY—

6:00 to 6:30 p. m.—White King Quartet.

WEEK COMMENCING SUNDAY, JANUARY 9, 1927

SUNDAY, JANUARY 9—

10:00 a. m.—Sermon from KHJ studio.

10:30 a. m.—Services from the First Methodist Episcopal Church;

7:00 to 8:00 p. m.—Evening service from the First Methodist Episcopal Church.

8:00 to 10:00 p. m.—News items. Program presenting the Arion Trio; Frederick MacMurray, viola; Orpheus Four Male Quartet, and others.

MONDAY, JANUARY 10—

8:00 p. m.—Nightly frost report.

TUESDAY, JANUARY 11—

2:30 p. m.—Weekly bridge game.

6:30 to 7:30 p. m.—Children's hour. Weekly visit of the Radio Fairies, Queen Titania and her Sandman; Charles D. McRoy's Playground Harmonica Band; Charles Leslie Hill, "Honey Boy," and others.

7:40 p. m.—H. M. Robertson will talk on "Dogs."

8:00 to 10:00 p. m.—News items. De luxe program.

10:00 to 11:00 p. m.—Dance hour by the Los Angeles Railway Orchestra.

WEDNESDAY, JANUARY 12—

2:30 p. m.—Talk on "Gardens," by Fred C. McNabb.

6:30 to 7:30 p. m.—Children's hour. Including Dick Winslow, juvenile reporter; Vivian Marple, "Blue Bell of KHJ"; Glenn Fitz, "Optimistic Mascot"; Patricia Eccleston, "Little Daffodil"; Lois Jane Campbell, "Brown Eyes," pupils of Marshall Stedman.

7:40 p. m.—Dr. Mars Baumgardt will lecture on "Astronomy."

8:00 to 10:00 p. m.—News items. De luxe program.

THURSDAY, JANUARY 13—

6:30 to 7:30 p. m.—Children's program. Featuring Billie Moore, 10-year-old reader, pupil of Marshall Stedman; Dickie Brandon, screen juvenile; June Brandon, contralto; Jeanne De Bard, "Bonnie Jeane"; Rosetta Lewin, 4½-year-old reader; Nancy Nolen, "Smiles"; Joyce Coad, "Red Riding Hood"; Nelita Bennett, "Gingerbread Girl."

7:40 p. m.—Dr. Philip M. Lovell will talk on "Care of the Body."

8:00 to 10:00 p. m.—News items. Program presenting the Zoellner Quartet.

FRIDAY, JANUARY 14—

6:30 to 7:30 p. m.—Children's hour. Including Marguerite Brigham, "Nightingale"; the Collins Twins, Catherine and Ellen; Roberta Bush, "Firefly of KHJ"; David Durand, "Little Boy Blue"; Henrietta Poland, "Forget-Me-Not of KHJ," and others.

7:30 p. m.—Fashion talk by Peggy Hamilton.

8:00 to 9:00 p. m.—News items. Program by the Auto Club of Southern California.

9:00 to 10:00 p. m.—De luxe program.

SATURDAY, JANUARY 15—

6:30 to 7:30 p. m.—Children's program. Presenting Nona Clapp, "Sunshine Fairy"; Dolly Wright, "Dolly of Radioland"; Arthur Stevens, "King Arthur"; Marjorie Genevieve Lowe, 8:00 to 10:00 p. m.—News items. De luxe program.

SILVER THE KING

24 Kt Gold
Pure Silver
Soft
Copper

Gosilco Super Aerial Wire

Gold over Silver on Copper

DX Reception Assured—30% More Volume—Remarkably Selective—Permanent

No. 14 Gauge, 3c per foot. Soft Round Bus, 10c per length.

Prepaid or C. D. D. Checks Accepted

GOSILCO RADIO PRODUCTS CO.

HUNTINGTON PARK, CALIF.

320 Marbrisa Ave., Vicinity Santa Fe and Irvington

If unobtainable from your dealer, order direct

Patent Pending

Open Until Nine

The Set for all the Year



The Companionable Set

*Light weight—easily handled—can be taken any place.
Perfect reproduction, selectivity, volume; beautifully designed.*

Will Fit in Any Setting.

The Lowest Priced Set of Its Kind on the Market.

ON DISPLAY IN LOS ANGELES AT

The Ambassador Hotel The Biltmore Hotel
Subway Terminal Waiting room (between 4th and 5th on Hill St.)
Pacific Electric Waitingroom (6th and Main Sts.)

Distributed by

Johnson Radio Co., 688 Geary St., San Francisco
The Radio Studios, 1207 Fourth Ave., Seattle

KEMPER RADIO LABORATORY

1236 Santee St.

LOS ANGELES

Westmore 2504

Makers of Kemper Ampliphonic Console



Harold Isbell
Announcer

Hollywood, California—337 Meters

KNX

750 WATTS—890 KILOCYCLES
LOS ANGELES EVENING EXPRESS
Paul G. Hoffman's Studebaker Bldg., 6116 Hollywood
Blvd., Hollywood. Phone HEMPSTEAD 4101
NAYLOR ROGERS, Manager and Program Director
GLEN RICE, Asst. Manager

"The Voice of Hollywood"

DAILY EXCEPT SUNDAY—

- 8:00 a. m.—Inspirational talk and morning prayer.
8:55 a. m.—Time signals from Washington D. C.
9:00 a. m.—Radio Shopping News, conducted by Carey Preston Rittmeister.
10:00 p. m.—Town Crier of the Day's morning message.
10:30 a. m.—Kate Brew Vaughn, Director Household Economics Dept., Evening Express, except Friday and Saturday.
2:00 p. m.—Radio Trades Association musical program.

- 12:00 m.—George Redman Orchestra.
1:30 p. m.—The Book Worm.
4:55 p. m.—Market reports.
6:00 p. m.—The Town Tattler.
6:15 p. m.—W. F. Alder Travelogue.
6:30 p. m.—Atwater Kent Orchestra, courtesy Ray Thomas, Inc.

WEEK COMMENCING SUNDAY, JANUARY 9, 1927

SUNDAY, JANUARY 9—

- 10:00 a. m.—First Presbyterian Church of Hollywood, Rev. Stewart P. MacLennan.
2:00 to 4:00 p. m.—City Park Board musical program.
6:30 p. m.—Hollywood Unitarian Church.
7:00 p. m.—First Presbyterian Church of Hollywood.
8:00 p. m.—Circle Theatre Concert Orchestra and organ recital.
9:00 p. m.—Feature program.

MONDAY, JANUARY 10—

- 3:00 p. m.—First Presbyterian Church of Hollywood.
4:00 p. m.—Little Jean and the Town Crier of the Day.
4:30 p. m.—Blue Monday Frolic—Howard Clark.
7:00 p. m.—George J. Birkel Music Company, courtesy program.
7:30 p. m.—Playlet, courtesy Overell Furniture Company.
8:00 p. m.—L. W. Stockwell Company, courtesy program.
9:00 p. m.—Taft Realty Company, courtesy program.
10:00 p. m.—Feature program.
11:00 p. m.—Hotel Ambassador, Gus Arnheim's Coconut Grove Orchestra.

TUESDAY, JANUARY 11—

- 3:00 p. m.—Combined program of Police and Fire departments.
4:00 p. m.—Radio matinee with Louise Howatt, contralto.
7:00 p. m.—Wilshire Ionaco Company, courtesy program.
8:00 p. m.—Feature program.
9:00 p. m.—Western Auto Supply Company, courtesy program.
10:00 p. m.—Hotel Ambassador, Gus Arnheim's Coconut Grove Orchestra.

WEDNESDAY, JANUARY 12—

- 4:00 p. m.—Talk on care of children, by Dr. Wayne B. Burr, child specialist of Redondo.
7:00 p. m.—George J. Birkel Music Company, courtesy program.
7:30 p. m.—Feature program.
8:00 p. m.—Security Trust and Savings Bank, courtesy program.
9:00 p. m.—Feature program.
11:00 p. m.—Hotel Ambassador, Gus Arnheim's Coconut Grove Orchestra.

THURSDAY, JANUARY 13—

- 11:00 a. m.—Nature talk, courtesy Marvel Ant Gelatine Company.
7:00 p. m.—Organ recital, courtesy of the Overell Furniture Company.
8:00 p. m.—Tufts-Lyons Arms Company, courtesy program.
9:00 to 10:00 p. m.—Feature program.
10:00 p. m.—Feature program.
11:00 p. m.—Hotel Ambassador, Gus Arnheim's Coconut Grove Orchestra.

FRIDAY, JANUARY 14—

- 3:00 p. m.—L. A. District Federation of Women's Clubs, musical program.
4:00 p. m.—Boy Scouts' musical program.
7:00 p. m.—Feature program.
9:00 p. m.—Davis Perfection Bread Company, courtesy program.
10:00 p. m.—Feature program.
11:00 p. m.—Hotel Ambassador, Gus Arnheim's Coconut Grove Orchestra.

SATURDAY, JANUARY 15—

- 3:00 p. m.—Town Crier of the Day and his Pals.
7:00 p. m.—Stories of insect life, by Harry W. McSpadden.
7:15 p. m.—Announcement of Sunday services of the leading Los Angeles churches.
7:30 p. m.—Luna Park, courtesy program.
8:00 p. m.—Feature program.
10:00 p. m.—Hotel Ambassador, Gus Arnheim's Coconut Grove Orchestra.
11:00 p. m.—KNX Frolic, from the main studio.

Making Millions Happy Every Day of the Year

ATWATER
KENT
RADIO

NOW--IN OVER
1,000,000
HOMES

See it!

Hear it!

Operate it!

and you'll know the reason!

RAY THOMAS, INC.

Atwater Kent Distributor

WEStmore 6334

1248 South Hope St.

Los Angeles, Calif.

Hollywood, California—252 Meters

KFWB

500 WATTS—1190 KILOCYCLES
 WARNER BROS. MOTION PICTURE STUDIOS
 Warner Bros. West Coast Studio, 5842 Sunset Blvd.
 GERALD L. KING, Manager. Phone GL. 9461
 "Movie Land"

DAILY EXCEPT SUNDAY—

6:00 to 7:00 p. m.—Pontiac Six Dinner Hour

8:00 to 8:10 p. m.—News Items.

10:10 to 11:00 p. m.—Warner Bros. Frolic.

MONDAY, TUESDAY AND WEDNESDAY—

5:00 to 6:00 p. m.—Children's Hour.

WEEK COMMENCING SUNDAY, JANUARY 9, 1927

SUNDAY, JANUARY 9—

9:00 to 11:00 p. m.—Warner Bros.' Frolic, introducing several motion picture stars and directors in novelty and surprise numbers; and Frances St. George, Albert Keglovich, Dan Gridley, Starke Sisters, Edward Novis, Nell Larson, Harry G. Keiper and his famous Movieland Orchestra.

MONDAY, JANUARY 10—

8:00 to 9:00 p. m.—Program presented by courtesy of Bundy and Albright, featuring Kenneth Gillum, Ann Grey, Peggy Mathews, Ina Mitchell Butler, Bundy and Albright Orchestra.

9:00 to 10:10 p. m.—Julius Phillips, accompanied by Ermon Lee Phillips; June Parker, and others.

TUESDAY, JANUARY 11—

7:30 to 8:00 p. m.—Program by courtesy of Blohm-Laswell, Inc., featuring Frances St. George, Elmer Bramel, The Fabric Coupe Body Orchestra.

8:10 to 9:10 p. m.—Kenneth Gillum, Babe Brown and his ukulele, Esther White.

9:10 to 10:10 p. m.—Babe Brown and his ukulele, Edward Novis, Warner Bros.' Syncopators, Peggy Mathews.

WEDNESDAY, JANUARY 12—

7:00 to 7:30 p. m.—Thirty minutes of sunshine, under the direction of Chas. W. Hamp, by courtesy of the Iona Company.

7:30 to 7:50 p. m.—"Where to go and what to buy."

8:00 to 9:00 p. m.—Program featuring Ann Grey, Dan Gridley, Bob Robinson.

9:00 to 10:10 p. m.—Elmer Bramel, Ina Mitchell Butler, Esther White, Albert Keglovich, and others.

THURSDAY, JANUARY 13—

8:00 to 9:00 p. m.—Frances St. Gorge, Julius Phillips, Warner Bros.' Syncopators.

9:00 to 10:10 p. m.—Edward Novis, Peggy Mathews, Bob Robinson.

FRIDAY, JANUARY 14—

8:00 to 9:00 p. m.—Julius Phillips, Babe Brown and his ukulele, June Parker.

9:00 to 10:10 p. m.—Kenneth Gillum, Ina Mitchell Butler, Elmer Bramel, Ana Grey.

SATURDAY, JANUARY 15—

7:00 to 8:00 p. m.—"Where to go and what to buy."

8:00 to 9:00 p. m.—Program presented by courtesy of the Mona Motor Oil Company, featuring June Parker and the Mona Motor Oil Company Orchestra.

Motor Oil Company Orchestra.

9:00 to 10:00 p. m.—Art Goodstein, Peggy Mathews, Warner Bros.' Syncopators.



Keep Your Good Old
 Table Horn and Put It
 in One of These

CONSOLE CABINETS

For Your Radio

MADE RIGHT—RIGHT HERE
 RIGHT PRICE

Complete stock on hand or will make to
 Your Order

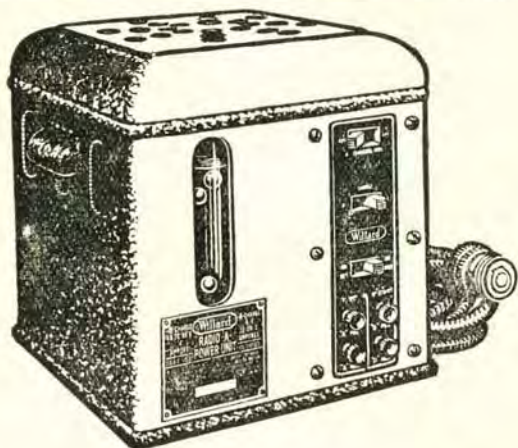
RADIO TABLES
 Remodeling—Cabinet Work—Repairing

Factory Open Wednesday Evenings

RADIO CABINET SHOP.

UNiv. 5563 4353 S. Vermont
 Los Angeles, Calif.

“Put Me On Your New Years List”



The WILLARD Radio “A” Power Unit and “B” Battery Charger

“I’ll make it my job to show someone what radio satisfaction really is. My two-speed charging keeps me in condition *all* the time. Colored balls indicate how much charge remains—and you simply throw a switch to turn on the charging current. I keep ‘B’ Batteries charged, too.”

Ask about Willard “A” and “B” Radio Units, also about Willard Radio Batteries.

AT

WILLARD SERVICE STATIONS
OR YOUR NEAREST RADIO DEALER

Hollywood, California—370.2 Meters



G. ALLISON PHELPS
Manager and Announcer

KMTR

500 WATTS
KMTR RADIO STATION
1025 N. Highland Avenue. Telephone HOLLY 3026
Owned and Operated by C. C. JULIAN
OLIVER S. GARRETSON, Technical Engineer
Portable Broadcast Station 6XBA

"Echoes of Hollywood"

DAILY EXCEPT SUNDAY—

- 1:30 to 2:30 p. m.—Radio Press Hour.
- 2:30 to 3:30 p. m.—Palais De Dance.
- 4:00 to 4:15 p. m.—Vacation Days.
- 5:00 to 6:00 p. m.—Home Hour.
- 6:00 to 6:45 p. m.—Duro System Dinner Hour Concert.
- 6:45 to 7:00 p. m.—Vacation Days.
- 7:00 to 7:30 p. m.—Musical Program.

- 10:00 to 11:00 p. m.—Miller's Cafe Lafayette Orchestra.
- 11:00 to 12:00 midnight—Dance Music from Palais de Dance.

TUESDAY, THURSDAY, SATURDAY—

- 9:30 to 10:00 p. m.—Sylvia, the Blind Cook.

WEEK COMMENCING SUNDAY, JANUARY 9, 1927

SUNDAY, JANUARY 9—

- 6:30 to 7:00 p. m.—Leila Castberg's half hour. "Your Mind and How to Use It."
- 7:00 to 8:00 p. m.—Miller's Lafayette Cafe Concert Orchestra.
- 8:00 to 9:30 p. m.—Concert period, Jack Cronshaw's Orchestra.

MONDAY, JANUARY 10—

- 7:30 to 8:30 p. m.—Safeway Stores' program.
- 8:30 to 9:30 p. m.—Eureka Vacuum Cleaner Company program.

TUESDAY, JANUARY 11—

- 10:00 to 10:15 a. m.—Fifteen Minutes of Sunshine by Charles Hamp.
- 10:15 to 10:45 a. m.—Dr. T. J. Coulter, "Dogs and Cats."
- 11:00 to 12:00 a. m.—Mme. Alene's talk.
- 7:30 to 8:00 p. m.—Silver String Quartet.
- 8:00 to 9:00 p. m.—Leonore Duncan Ballad Ensemble.
- 9:00 to 10:00 p. m.—California Russian Quartet, Chico de Verde, director.

WEDNESDAY, JANUARY 12—

- 10:00 to 10:30 a. m.—Dr. Chas. Watson from University Christian Church.
- 8:00 to 9:00 p. m.—Hour of special entertainment.
- 9:00 to 10:00 p. m.—Los Angeles Railway Orchestra.

THURSDAY, JANUARY 13—

- 10:00 to 10:15 a. m.—Fifteen Minutes of Sunshine by Charles Hamp.
- 10:15 to 10:45 a. m.—Dr. Paul J. Dorosh, The Diet Question Box.
- 10:45 to 11:00 a. m.—Georgia O. George.
- 7:30 to 8:00 p. m.—Chas. Silliman's Rex Trio.
- 8:30 to 9:00 p. m.—Angelus Instrumental Quartet.
- 9:00 to 10:00 p. m.—Sierra Singers. Male quartet.

FRIDAY, JANUARY 14—

- 8:15 to 9:15 a. m.—The Breakfast Club.
- 7:30 to 8:00 p. m.—Thirty Minutes of Sunshine by Charles Hamp.
- 8:00 to 9:00 p. m.—KMTR Concert Orchestra. Loren Powell, director.
- 9:00 to 10:00 p. m.—Ray Bailey's String Quartet.

SATURDAY, JANUARY 15—

- 10:00 to 10:15 a. m.—Charles Hamp, director of radio activities for the Iona Company.
- 10:15 to 11:30 a. m.—Auditorium period, conducted by Selwyn Harris.
- 1:00 to 1:15 p. m.—Gordon Whitnall, managing director, City Planning Commission.
- 1:15 to 1:30 p. m.—Officer Earl H. Cooper, Bureau of Public Safety.
- 7:30 to 8:10 p. m.—Los Angeles Police and Fire departments.
- 8:20 to 8:30 p. m.—Sheriff's Office. Bureau of Public Relations.
- 8:30 to 9:00 p. m.—Y. M. C. A. program.
- 9:00 to 10:00 p. m.—Special musical program.

SHEPHERD RADIO SERVICE

Authorized Dealer for

Stromberg-Carlson, Federal Ortho-Sonic Receiving Sets

We specialize in correcting balky receivers. Super-Heterodynes, Infradynes, Roberts, etc., made to perform efficiently

Transformers Matched, Coils Balanced

Phone Us Your Troubles. Our Service Will Please

Batteries Changed, Tubes Reactivated. Work Called for and Delivered

GRanite 7482

7562 Sunset Boulevard

Hollywood, California

Selling Like Hot Cakes

The Powell 'B' Eliminator

Uncondition-
ally
Guaranteed



\$12²⁵

Absolutely No Hum

Operates any set from light socket without the use of expensive and troublesome "B" batteries. A large surplus of power at 100 volts and at a cost of only a few cents a year.

MORE VOLUME - - MORE DISTANCE
GREATER SATISFACTION
BETTER QUALITY - - BETTER PRICE

No Tubes, No Acid and Nothing Else to Buy

A ten-day trial with absolute satisfaction or money back

GUARANTEE

This instrument is the result of months of experimenting and exhaustive tests. The best of materials and workmanship have been combined to insure its satisfaction with the user and it is guaranteed unconditionally for one year. If for any reason it fails to perform satisfactorily it should be returned to the seller who is instructed to repair or replace, free of charge.

Call or Telephone VERmont 1619 for Demonstration

Powell Manufacturing Co.

4009 S. Western Ave.

Los Angeles, Calif.



M. E. Carrier
Announcer

Los Angeles, California—294 Meters

KTBI

750 WATTS—1020 KILOCYCLES
BIBLE INSTITUTE OF LOS ANGELES
MR. M. E. CARRIER, Manager
PROF. H. G. TOVEY, Director of Programs
Phone ME. 6701

DAILY EXCEPT SUNDAY—

8:30 to 9:00 a. m.—Devotional Hour.
2:00 to 3:00 p. m.—Inspirational Hour.

DAILY EXCEPT FRIDAY AND SUNDAY—

7:15 to 8:00 p. m.—Aunt Martha's Children's Hour.

WEEK COMMENCING SUNDAY, JANUARY 9, 1927

SUNDAY, JANUARY 9—

10:30 a. m. to 12:30 p. m.—Regular service of the Church of the Open Door.
6:00 to 7:00 p. m.—Radio vesper service. Sermon by Rev. J. T. Voris.
7:15 to 9:30 p. m.—Regular evening service of the Church of the Open Door.

MONDAY, JANUARY 10—

8:00 to 9:00 p. m.—Mexican program, directed by Rev. Ben Pierson, superintendent of Mexican Misalons of Southern California.

TUESDAY, JANUARY 11—

8:00 to 9:00 p. m.—Musical program, directed by Everett L. Anderson of Huntington Park.

WEDNESDAY, JANUARY 12—

8:00 to 9:00 p. m.—Dr. John McNeill of Scotland will lecture.

THURSDAY, JANUARY 13—

8:00 to 9:00 p. m.—Musical program arranged by Mrs. Lawrence F. Worthy of Huntington Beach.

FRIDAY, JANUARY 14—

6:15 to 7:00 p. m.—Aunt Martha's children's program.
7:00 to 8:00 p. m.—Exposition of International Sunday School Lesson by Rev. John Hubbard.
8:00 to 9:00 p. m.—Dr. John McNeill of Scotland will lecture.



Gladwyn N. Nichols
Announcer

Los Angeles, California—275.1 Meters

KFSG

500 WATTS—1090 KILOCYCLES
ANGELUS TEMPLE, ECHO PARK, Phone DR. 2560
AIMEE SEMPLE McPHERSON, Founder, President
ESSIE BINKLEY, Program Manager
ESTHER FRICKE GREENE, Organist
GLADWYN N. NICHOLS, Musical Director & Announcer
"Four Square Gospel"

DAILY EXCEPT SUNDAY AND MONDAY—

10:30 to 11:30 a. m.—Sunshine Hour.
11:30 a. m. to 12:30 p. m.—Noonday Musical.
6:30 to 7:30 p. m.—Angelus Hour.

DAILY EXCEPT SUNDAY, WEDNESDAY AND SATURDAY—

2:30 to 3:30 p. m.—Gray Studio Program.

SUNDAY, JANUARY 9—

10:30 to 11:30 a. m.—Regular service with sermon by Aimee Semple McPherson.
2:30 to 4:30 p. m.—Afternoon Dispensational service by Aimee Semple McPherson.
6:30 to 8:00 p. m.—Musical hour. The Angelus Temple Choir, Band and soloists.
8:00 to 9:30 p. m.—Revival service by Aimee Semple McPherson.
10:00 to 11:00 p. m.—Organ recital by Esther Fricke Greene.

TUESDAY, JANUARY 11—

3:30 to 4:30 p. m.—Vesper Hour. Organ recital by B. Ernest Ballard.
7:30 to 9:30 p. m.—Evangelistic services by Student Evangelists.

WEDNESDAY, JANUARY 12—

11:30 a. m. to 12:30 p. m.—Noonday Musicales. Organ recital by B. Ernest Ballard.
7:30 to 9:30 p. m.—Regular Mid-week prayer service by Aimee Semple McPherson. Musical program by the Four Square Choir.

THURSDAY, JANUARY 13—

3:30 to 4:30 p. m.—Vesper Hour. Organ recital by B. Ernest Ballard.
7:30 to 9:30 p. m.—Regular Water Baptismal service by Aimee Semple McPherson.
9:15 to 10:00 p. m.—Gray Studio Program.
10:00 to 11:00 p. m.—Organ Recital by Esther Fricke Greene.

FRIDAY, JANUARY 14—

3:30 to 4:30 p. m.—Vesper Hour. Organ Recital by Esther Fricke Greene.
7:30 to 9:30 p. m.—Crusader Rally. Sermon by Aimee Semple McPherson.
10:00 to 11:00 p. m.—Back Home Hour.

SATURDAY, JANUARY 15—

3:30 to 4:30 p. m.—The Children's Happy Hour.
7:30 to 9:30 p. m.—Divine Healing Service conducted by Aimee Semple McPherson.

*Splendid
Service*



*Competent
Salesmen*

SELECTIVITY

New stations coming on the air make it more and more difficult to get through local interference for those DX thrills.

Radiolas are super-selective

A Demonstration Will Prove It



Eastman Kodak Stores, Inc.

510 South Broadway
LOS ANGELES



Dave Ward
Announcer

Hollywood, California—226 Meters

KFOZ

1641 North Argyle Ave., Hollywood, California
Gladstone 3187; Gladstone 3188
DAVE WARD, Program Director and Announcer
L. E. TAFT, Technical Engineer
"The Palace Bungalow Studio"

DAILY EXCEPT SUNDAY—

12:00 to 1:00 p. m.—Los Angeles Merchants' and Manufacturers' Hour,
6:00 to 7:00 p. m.—Decker, Diamond and Decker, Hawaiian Trio.
7:00 to 8:00 p. m.—Musical Hour.

WEEK COMMENCING SUNDAY, JANUARY 9, 1927

SUNDAY, JANUARY 9—

8:00 to 9:00 p. m.—Silver String Glendalians.
9:00 to 11:00 p. m.—KFQZ Yellow Jackers; Joe Hawley and his tiple gita, and Virginia King.
11:00 to 12:00 p. m.—Old timers in old-time melodies.

MONDAY, JANUARY 10—

5:00 to 6:00 p. m.—Technical questions and answers, by Leslie E. Taft.
8:00 to 9:00 p. m.—Semi-classical hour presented by Myra Belle Vickers.
9:00 to 10:00 p. m.—L. A. Railway Quartet, Wendall Smith, Badger and Mueseler, and Hazel and the Office Boy.

TUESDAY, JANUARY 11—

8:00 to 9:00 p. m.—Police and Fire joint program.
10:00 to 11:00 p. m.—California Dons and Bob Swan, soloist.

WEDNESDAY, JANUARY 12—

8:00 to 9:00 p. m.—C. Howard Paxton, Art Goodstein in blue songs, Harlan Pauley and his steel guitar, and Chas. Carey Rumsey.
9:00 to 10:00 p. m.—Kitty and the Boys, and Jack Goode, soloist.
10:00 to 11:00 p. m.—KFQZ Yellow Jackets, Laurence Lohr, Ekin Haig, Virginia King and the Office Boy.

THURSDAY, JANUARY 13—

8:00 to 9:00 p. m.—Rebroadcast of Eastern stations.
9:00 to 11:00 p. m.—L. A. Railway Orchestra.

FRIDAY, JANUARY 14—

8:00 to 9:00 p. m.—Marian Boogar in pianologues, Hugh Wellington, Birdie Le Belle and Ed Pose.
9:00 to 11:00 p. m.—Gerard's Syncopaters, "Red" Wyatt, Helen McColl and Pat Lee.

SATURDAY, JANUARY 15—

1:00 to 2:00 p. m.—Bob McDonald, Hazel and the Office Boy.
8:00 to 9:00 p. m.—Laurence Lohr, Ruth Michelson, Ekin Haig, Royal Wallace and uke.
9:00 to 11:00 p. m.—L. A. Railway Orchestra, Billie Lee, Don Stevens, and Bud Riley.

OUR NEW ADDRESS, 407 E. Pico St.—TELEPHONE WE. 1401



George Frenger
Announcer

Pasadena, California—315.6 Meters

KPSN

PASADENA STAR-NEWS
1000 WATTS—950 KILOCYCLES
GEORGE CECIL COWING, Managing Director
GEORGE FRENGER, Program Manager
FORBES W. VAN WHY, Engineer-in-Charge
PERCY C. PRYOR, Studio Office
Phone, Wakefield 3111

DAILY EXCEPT SUNDAY—

12:00 to 12:15 p. m.—News Bulletin.
6:00 to 7:00 p. m.—Dinner-time news report.

WEEK COMMENCING SUNDAY, JANUARY 9, 1927

SUNDAY, JANUARY 9—

10:30 to 10:45 a. m.—Family Altar Service by the United Church Brotherhoods.
11:44 a. m.—Service from the Pasadena Presbyterian Church.
6:00 to 7:00 p. m.—Dinner hour musical program.
7:30 to 8:15 p. m.—Neighborhood Church monthly broadcast.

TUESDAY, JANUARY 11—

8:00 to 9:00 p. m.—Star-News concert.

THURSDAY, JANUARY 13—

8:00 to 9:00 p. m.—Program arranged for the Pasadena Chamber of Commerce.

SATURDAY, JANUARY 15—

8:00 to 9:00 p. m.—Star-News concert.



Tom Mitchell
Announcer

Santa Monica, California — 238 Meters

KNRC

1000 WATTS CAPACITY
Owned and Operated by KEIRULFR & RAVENS-
CROFT COMPANY.
Municipal Auditorium, Ocean Park, Santa Monica,
Calif. Phone Santa Monica 63-101.
TOM MITCHELL, Studio Manager and Announcer.
C. B. JUNEAU, Transmission Engineer.
"The Station with a Smile"

DAILY EXCEPT SUNDAY—

6:30 to 7:30 p. m.—Club Casa Del Mar organ recital. Remote control.

7:30 p. m.—Talk on Dogs by Tom Mitchell.

10:00 to 11:00 p. m.—Club Casa Del Mar Orchestra. Remote control.

DAILY EXCEPT MONDAY—

8:00 to 9:00 p. m.—Band Concert.

2:30 p. m.—Band Concert.

WEEK COMMENCING MONDAY, JANUARY 10, 1927

MONDAY, JANUARY 10—

1:30 to 2:15 p. m.—Shopping Tour with Margeret McDonald Shontz and Margeret de Noix.

4:15 p. m.—Brother Tom and his Family Circle.

6:30 p. m.—Club Casa Del Mar Organ Recital with Julius K. Johnson.

8:00 to 10:00 p. m.—K. and R. Program, Black and Tan Orch., Warren G. Cramer

10:00 to 11:00 p. m.—Club Casa Del Mar Orch., by Remote Control through KNRC.

TUESDAY, JANUARY 11—

4:15 p. m.—Brother Tom and his Family Circle.

9:00 to 10:00 p. m.—Tike Whinnery and his Music Masters, Sherman Hunter, tenor;

WEDNESDAY, JANUARY 12—

1:30 to 2:30 p. m.—Shopping Tour with Margeret McDonald Shontz and Margeret de Noix.

4:15 p. m.—Brother Tom and his Family Circle.

9:00 to 10:00 p. m.—K. and R. Program, Pirate Band; Edna Pauley, contralto;

THURSDAY, JANUARY 13—

4:15 p. m.—Brother Tom and his Family Circle.

9:00 p. m.—Charlie Diamond Steel Guitar, and others.

FRIDAY, JANUARY 14—

1:30 to 2:15 p. m.—Shopping Tour by Margert McDonald Shontz and Margeret de Noix.

4:15 p. m.—Brother Tom and his Family Circle.

9:00 p. m.—L. A. R. R. Orch., or string Quartette; Fay Durst, soprano;

SATURDAY, JANUARY 15—

4:15 p. m.—Brother Tom and his Family Circle.

9:00 to 10:00 p. m.—K. and R. Program.

11:00 to 12:00 p. m.—Gables Club Frolic, Lee Young, Jr. and his Orch., remote control.

SUNDAY, JANUARY 16—

10:45 a. m.—Pilgrim Lutheran Church Service, remote control.

5:15 to 6:15 p. m.—Pirate Band.

6:15 p. m.—Pilgrim Lutheran Church Evening Service, remote control.

7:00 to 8:00 p. m.—Organ Recital Club Casa Del Mar.

9:00 to 10:00 p. m.—Club Casa Del Mar Orch., by remote control thru KNRC.

OUR NEW LOCATION, 407 E. PICO ST., LOS ANGELES

PALMER RADIO LABORATORY

Established 1923

Specializing in

**SUPER-HETERODYNES AND INFRADYNES
Intermediate Transformers Made and Calibrated**

Also all other types of receivers made to operate efficiently
Satisfaction Guaranteed or No Charge

Advice Free

Open Evenings Till 9 P. M.

Courtesy to All

4529 S. Vermont, Los Angeles. Phone VERmont 7883



Leo T. Cleary
Announcer

Venice, California—205 Meters

KFVD

500 WATTS
McWHINNIE ELECTRIC CO., Venice Ballroom,
Venice Calif. Phone 65959 or 65950
Station Mgr., W. H. WHITE. Technician, O. B. MILLS
DAILY EXCEPT SUNDAY—

5:00 to 7:00 p. m.—Shopping Hints and Musical Program.
10:00 to 12:00 midnight—Venice Ballroom Orchestra.

WEEK COMMENCING SUNDAY, JANUARY 9, 1927

SUNDAY, JANUARY 9—
10:00 to 12:00 midnight—Venice Ballroom Orchestra.

MONDAY, JANUARY 10—
8:00 to 8:30 p. m.—Kathryn Pratt, concert pianist.

8:30 to 9:00 p. m.—Harry Dinowitz, violinist; George Thiroux, ukulele artist.
9:00 to 10:00 p. m.—Melba Lyon, KFVD girl, and others.

TUESDAY, JANUARY 11—

8:00 to 9:00 p. m.—Martin Wallace Dance Orchestra and entertainment, featuring Bob Wallace and Bill Wallace, Scotch comedians.

9:00 to 10:00 p. m.—Geraldine Gordon, female baritone; One String Danny and Six String Penny, Melba Lyon, KFVD girl.

WEDNESDAY, JANUARY 12—

4:00 to 5:00 p. m.—Children's Hour program under the direction of Ursula March Largey.

8:00 to 8:30 p. m.—Carl Brandenburg, tenor.

8:30 to 9:30 p. m.—Barker Brothers King Players; Violet Rose, whistler; Randall Brothers,

guitar soloists.

9:30 to 10:00 p. m.—Ed Funnell and George Curry, harmonica soloists.

THURSDAY, JANUARY 13—

4:00 to 5:00 p. m.—Special program featuring Louis Lusich, Slavonian tenor, and others.

8:00 to 9:30 p. m.—Virginia McCoy, contra contralto.

8:30 to 9:00 p. m.—The Ancient Quartet, featuring the four old soldiers.

9:00 to 10:00 p. m.—Pope's Californians' Dance Orchestra; Melba Lyon, KFVD girl, and others.

FRIDAY, JANUARY 14—

4:00 to 5:00 p. m.—Children's Hour program.

8:00 to 8:30 p. m.—Crescent Bay Cities Quartet.

8:30 to 9:30 p. m.—L. A. Railway String Quartet.

9:30 to 10:00 p. m.—California Colonial Band under the direction of Frank Pratt; Melba Lyon, KFVD girl, and others.

SATURDAY, JANUARY 15—

8:00 to 10:00 p. m.—Studio program and everybody welcome.

12:00 midnight—Frolic at the Ship Cafe, featuring Dave Snell and his wonder orchestra; Val Roberts, Mal Kalish and George Lloyd.



Major Lawrence Mott
Announcer

Avalon, California—211.1 Meters

KFWO

THE ISLAND STATION
Power 250 Watts—Western Electric Equipment
"Katalina for Wonderful Outings"
MAJOR LAWRENCE MOTT, Owner-Operator
MISS FRANCES HEWITT, Studio & Program Dir.
"The Isle With a Smile"

WINTER SCHEDULES AT KFWO

The Mott Station at Catalina Island, California

(In effect week of Sept. 20th)

DAILY EXCEPT MONDAY—

12:30 to 1:30—Hotel St. Catherine Orchestra.

6:30 to 8:00—Hotel St. Catherine Orchestra.

DAILY EXCEPT MONDAY, THURSDAY AND SUNDAY—

6:00 to 6:30—Studio.

MONDAYS: Silent.

TUESDAYS: 5:00 to 6:00—Miss Hewitt's Golden Hour.
6:00 to 8:00—Studio.

WEDNESDAYS: 8:00 to 9:00—Studio Program.
9:00 to 12:00 Midnight—Overseas.

THURSDAYS: 6:00 to 6:30—Wrigley Chimes.
8:00 to 9:00—Studio Program.

FRIDAYS: 5:00 to 6:00—Miss Hewitt's Golden Hour.

SATURDAYS: 3:00 to 4:30—Rebroadcast of KNX.

9:15 to 10:00—Studio.

SUNDAYS: 5:00 to 6:00—Miss Hewitt's Golden Hour.

6:00 to 6:30—Wrigley Chimes.

8:00 to 9:15—Lobby Concert.

**Better In
Every Way**



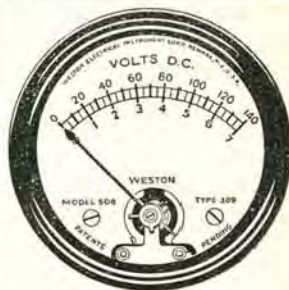
**The Advance
fixed
CRYSTAL
DETECTOR**

This detector is as near perfect for all requirements as can be made. Super-tested for sensitivity and permanent setting of gold point. Positively fixed. Very finest construction throughout. More than 85,000 now in use and giving absolute satisfaction.

\$1.50 at your radio dealer—or by mail prepaid. (If ordering direct send name of nearest radio dealer.)

Advance Electric Co.
1260 W. Second St.
LOS ANGELES, CALIF.

**Improve
YOUR
RADIO**



RADIO enthusiasts with all types and makes of sets have learned that if tubes are not operated under precise voltage conditions they will experience tone distortion and needless tube expense.

These Weston Model 506 two inch, panel voltmeters possess the characteristics which distinguish Weston instruments from all others. There are various models of this 506 type—hence, the purchaser should consult his radio dealer or write us for the booklet entitled "Weston Radio Instruments."

Your Dealer has WESTON Instruments or will get them promptly from his Radio Jobber

WESTON ELECTRICAL
INSTRUMENT CORPORATION
Weston Avenue, Newark, N. J.

STANDARD THE WORLD OVER
WESTON
Pioneers since 1888



"Hal" G. Nichols
Announcer

Long Beach, California—233 Meters

KFON

1280 KILOCYCLES—750 WATTS

NICHOLS & WARRINER, INC.

Studio 211 Jergins Trust Bldg. Phones 617-19, 614-60

Business Office, 212 Jergins Trust Bldg.

Phones: 617-19, 614-60

HAL G. NICHOLS, Manager and Studio Director

"Where Your Ship Comes In"

DAILY EXCEPT SUNDAY—

- 11:30 a. m. to 12:30 p. m.—Prizma Hour.
 4:00 to 4:30 p. m.—Press-Telegram Late News.
 5:00 to 6:00 p. m.—KFON Concert Orchestra.
 6:00 to 6:50 p. m.—Organ Recital from State Theater.
 6:50 to 7:00 p. m.—Pacific Land Co.'s Travelogue.
 9:00 to 10:00 p. m.—"The Hour De Luxe."

DAILY EXCEPT SUNDAY AND MONDAY—

- 2:30 to 4:00 p. m.—Municipal Band Concert.

WEEK COMMENCING SUNDAY, JANUARY 9, 1927

SUNDAY, JANUARY 9—

- 4:00 to 5:00 p. m.—Vesper hour.
 5:00 to 6:50 p. m.—KFON Concert Orchestra.
 7:00 to 7:45 p. m.—Parry's Cafe Orchestra.
 7:45 to 9:00 p. m.—Services from First Church of Christ, Scientist.
 9:00 to 12:00 p. m.—"Everybody's Night," amateurs and professionals.

MONDAY, JANUARY 10—

- 7:00 to 8:00 p. m.—Thrifty Sandy program, sponsored by Citizens State Bank.
 10:00 to 11:00 p. m.—Capitol Theatre organ.
 11:00 to 12:00 p. m.—Majestic Ballroom Orchestra.

TUESDAY, JANUARY 11—

- 7:00 to 7:30 p. m.—Studio program.
 7:30 to 8:00 p. m.—Chat for book lovers.
 8:00 to 9:00 p. m.—Press-Telegram presenting Long Beach Municipal Band.
 9:00 to 10:00 p. m.—"The Hour De Luxe."
 10:00 to 11:00 p. m.—Studio program.
 11:00 to 12:00 p. m.—Majestic Ballroom Orchestra, by remote control.

WEDNESDAY, JANUARY 12—

- 7:00 to 8:00 p. m.—Pacific Coast Club Orchestra.
 8:15 to 9:00 p. m.—Press-Telegram presenting Pacific Coast Club Orchestra.
 9:00 to 10:00 p. m.—Truck Fire Service program.
 10:00 to 11:00 p. m.—Majestic Ballroom Orchestra, by remote control.
 11:00 to 12:00 p. m.—Pacific Coast Club Orchestra.

THURSDAY, JANUARY 13—

- 7:00 to 8:00 p. m.—Program presented through courtesy of Chrysler dealers.
 8:00 to 9:00 p. m.—Press-Telegram presenting Long Beach Municipal Band.
 9:00 to 10:00 p. m.—Shell Oil Company's Orchestra.
 10:00 to 11:00 p. m.—Capitol Theatre organ.
 11:00 to 12:00 p. m.—Majestic Ballroom Orchestra, by remote control.

FRIDAY, JANUARY 14—

- 7:15 to 7:45 p. m.—Church of Christ, by Rev. Ernest Bean.
 8:00 to 9:00 p. m.—Press-Telegram presenting Long Beach Municipal Band.
 9:00 to 10:00 p. m.—Gaskill Manufacturing Co. and Missman Radio Co. program.
 10:00 to 12:00 p. m.—Elks' Frolic, Lodge No. 888.

SATURDAY, JANUARY 15—

- 7:00 to 8:00 p. m.—Pacific Coast Club Orchestra.
 8:00 to 9:00 p. m.—Press-Telegram presenting Long Beach Municipal Band.
 9:00 to 10:00 p. m.—Pacific Coast Club Orchestra.
 10:00 to 11:00 p. m.—Capitol Theatre organ.
 11:00 to 12:00 p. m.—Pacific Coast Club Orchestra.

HORNS

FOR
PORTABLES
CABINETS
CONSOLES

Wonderful Tone; no square corners to cause that hollow sound like "tootin' down a barrel.

COMPARISON INVITED H O R N S

| Number—Size | Tone Travel |
|---------------------------|-------------|
| 100—6" Diam., 6" Deep | 13" |
| 200—5"x8", 8" Deep | 18" |
| 200—8" Diam., 8" Deep | 18" |
| 300—10" Diam., 9½" Deep | 23" |
| 400—8"x12", 11½" Deep | 35" |
| 400—11½" Diam., 11½" Deep | 35" |

UNITS

We Represent
Holliday Radio
Co., Inc.
Manufacturers of the
best Commercial Unit
on the market. Will
take the power tube
without distortion.
Fully Guaranteed

We Will Out-Demonstrate Any Horn Made, Regardless of Its Cost or What Material Is Used in Its Manufacture.

M. J. CARLS, 1929 S. Los Angeles St. WE. 2712. Los Angeles



MAMMOTH RADIO FACILITIES

KING RADIO is made, not in a loft that can be closed tomorrow, but in a great factory that has been famous for twenty years for its fine precision products. Seven acres of floor space all under one roof. Sixteen hundred people. An annual volume in fine radio sets that mounts well into the millions of dollars!

We are all proud of our connection with King Radio. We know it means security to us, the distributor and dealer. To you, the final radio buyer, we know it means that King sets will never be "orphan" sets. And we know that the simple word of this great house is better than the bond of an unknown and untried maker. We invite you to inspect our line of King Radio—truly "Most Radio Per Dollar."

Distributors for Los Angeles Territory:

THE BANTA COMPANY

1801 S. HILL STREET

LOS ANGELES, CALIFORNIA

"Most Radio Per Dollar"

KING RADIO



Tom Sexton
Announcer

San Diego, California—245.8 Meters

KFSD

1000 WATTS—1220 KILOCYCLES
AIRFAN RADIO CORPORATION
U. S. Grant Hotel, 326 Broadway, San Diego. Main 8881
RAYMUND V. MORRIS, President
TOM SEXTON, Announcer

"Kiss From San Diego"

DAILY—

6:30 to 7:00 p. m.—Nightly musical review.

7:00 to 8:00 p. m.—"Vesper Hour," Orthophonic recital.

DAILY EXCEPT SATURDAY—

6:15 to 6:30 p. m.—Ye Towne Topics.

DAILY EXCEPT SUNDAY—

10:00 to 11:00 p. m.—Harvey Ball and his U. S. Grant Hotel Orchestra.

WEEK COMMENCING SUNDAY, JANUARY 9, 1927

SUNDAY, JANUARY 9—

3:00 to 4:00 p. m.—Temple service of the Theosophical University at Point Loma, Calif.

8:00 to 9:00 p. m.—Mixed musical program.

9:00 to 10:00 p. m.—All Star Five and Gene Merritt, baritone.

MONDAY, JANUARY 10—

8:00 to 9:00 p. m.—First Unitarian Church, Howard B. Bard.

9:00 to 10:00 p. m.—Mixed musical program.

TUESDAY, JANUARY 11—

8:00 to 9:00 p. m.—Union Title Company "Classic Hour" program.

9:00 to 10:00 p. m.—R. V. Morris, Inc., Hawaiian music.

WEDNESDAY, JANUARY 12—

7:00 to 7:15 p. m.—Health and Beauty talks, by Dorothy Hays, Inc.

7:15 to 7:30 p. m.—Studio program.

7:30 to 8:30 p. m.—Concert program furnished by the Theosophical University at Point Loma, Calif., by remote control.

8:30 to 10:00 p. m.—K F S D request program.

THURSDAY, JANUARY 13—

8:00 to 9:00 p. m.—John P. Mills, Inc., Riviera Villas Orchestra.

9:00 to 10:00 p. m.—"Popular Hour" Orthophonic recital.

FRIDAY, JANUARY 14—

8:00 to 9:00 p. m.—P. M. Dairy Concert Orchestra, trio and songs.

9:00 to 10:00 p. m.—Mixed musical program.

SATURDAY, JANUARY 15—

8:00 to 9:00 p. m.—Mme. de Bauviere, "Franco-American" hour.

9:00 to 10:00 p. m.—Mixed musical program.

11:00 p. m. to 1:00 a. m.—K F S D Midnight Frolic. Fun for everyone.

OUR NEW ADDRESS, 407 E. Pico St.—TELEPHONE WE. 1401

RADIO SERVICE A SPECIALTY

Batteries Recharged, Called For and Delivered
Our Work Is Guaranteed

VERMONT MUSIC CO.

DRexel 3229

826 S. Vermont

Open Till 10 P. M.

TO JOBBERS AND MANUFACTURERS

Spaulding Fibre, Spaulding Bakelite, Hope Talking Tape,
Irvington Spaghetti and Wire

Factory Stocks and Cutting Equipment—Ample Stocks in Los Angeles

Panels, Washers, Discs, Special Shapes

- CLAPP & LaMOREE

310 E. Fourth St., Los Angeles. MAIn 4403

LOS ANGELES

SAN FRANCISCO

PORTLAND

Let the light socket run your set! Buy a

WESTINGHOUSE

Radio "A" Autopower



Charger and "A" battery combined in both four and six volt sizes. Absolutely automatic! Plug it into your light socket and get smooth—continuous—even flow of current! Noiseless, non-pulsating—absolutely without hum.

An entirely new device, invented and built by Westinghouse. Economical. Practically indestructible. No replacements. No tubes. No liquids in charger. No special wiring.

Bring your radio up to date with the "A" Autopower. Get the best your set can give—every night—week after week—year after year.

Ask Your Dealer for Demonstration

Southern California Distributors

Harry W. Harrison, Inc.

848 South Flower St.

Phone TRinity 9777

ALSO

ILLINOIS ELECTRIC CO.
* 315 S. San Pedro St.

SHERMAN, CLAY & CO.
944 Santee St.

LOS ANGELES, CALIFORNIA

San Francisco, California—428.3 Meters

KPO

1000 WATTS—700 KILOCYCLES
 HALE BROTHERS AND THE CHRONICLE
 CLAIRE MORRISON, Technical Director
 Phone Kearney 5777
 "The Voice of San Francisco"



Claire Morrison
Announcer

DAILY EXCEPT SUNDAY—

- 6:45, 7:15 and 7:45 a.m.—Daily health drill by Hugh Barrett Dobbs.
 10:10 a.m.—Household Hints.
 10:30 a.m.—"Ye Towne Crier."
 12:00 noon—Time signals and Scripture reading.
 12:30 to 1:00 p.m.—Clift Hotel Concert Trio.
 1:00 to 2:00 p.m.—Rudy Seiger's Fairmont Hotel Orchestra.
 3:30 to 5:30 p.m.—Palace Hotel Concert Orchestra.
 5:30 to 6:15 p.m.—Children's Hour.
 6:15 to 6:30 p.m.—"Ye Towne Crier."
 6:30 to 7:00 p.m.—States Restaurant Orchestra.
 7:00 to 7:30 p.m.—Rudy Seiger's Fairmont Hotel Orchestra.
 7:30 to 8:00 p.m.—DX.

WEEK COMMENCING SUNDAY, JANUARY 9, 1927**SUNDAY, JANUARY 9—**

- 9:45 to 10:45 a.m.—Undenominational and non-sectarian church service.
 10:45 a.m.—United States weather forecast and general information.
 2:45 to 4:15 p.m.—Concert of the San Francisco Symphony Orchestra, Alfred Hertz director, to be broadcast from the New Curran Theater by KPO, KGO and KFI.
 6:00 to 6:30 p.m.—States Restaurant Orchestra.
 6:30 p.m.—"Ye Towne Crier" giving general information.
 6:35 to 8:35 p.m.—Palace Hotel Concert Orchestra.
 8:35 to 10:00 p.m.—Rudy Seiger's Fairmont Hotel Concert Orchestra.
 10:00 to 12:00 p.m.—John Wolohan and His Californians at the Trianon ballroom.

MONDAY, JANUARY 10—

- 8:00 to 8:10 p.m.—Chamber of Commerce talk on "Industrial San Francisco"
 8:10 to 8:25 p.m.—Book reviews by Harold A. Small of The Chronicle.
 8:25 to 9:00 p.m.—Bride lesson No. 12.
 10:00 to 11:00 p.m.—Billy Long's Cabirians.
 11:00 to 12:00 p.m.—KPO's Variety Hour, featuring KPO's well known artists.

TUESDAY, JANUARY 11—

- 8:00 to 9:00 p.m.—"Uda Waldrop Hour," featuring Uda Waldrop, KPO's official organist
 9:00 to 10:00 p.m.—Studio program.
 10:00 to 11:00 p.m.—Palace Hotel Rose Room Dance Orchestra, Gene James director.
 11:00 to 12:00 p.m.—Billy Long's Cabirians.

WEDNESDAY, JANUARY 12—

- 8:00 to 9:00 p.m.—Program by the Atwater Kent Artists,
 9:00 to 10:00 p.m.—Studio program.
 10:00 to 11:00 p.m.—States Restaurant Orchestra, Waldemar Lind, director.
 11:00 to 12:00 p.m.—John Wolohan and His Californians at the Trianon Ballroom.

THURSDAY, JANUARY 13—

- 8:00 to 9:00 p.m.—Studio program
 9:00 to 10:00 p.m.—Studio program.
 10:00 to 11:00 p.m.—Palace Hotel Roseroom Dance Orchestra, Gene James director.
 11:00 to 12:00 p.m.—John Wolohan and His Californians at the Trianon Ballroom.

FRIDAY, JANUARY 14—

- 8:00 to 10:00 p.m.—Walter Krausgrill's Balconades Ballroom Orchestra.
 10:00 to 11:00 p.m.—States Restaurant Orchestra, Waldemar Lind director.
 11:00 to 12:00 p.m.—John Wolohan and His Californians at the Trianon Ballroom.

SATURDAY, JANUARY 15—

- 8:00 to 9:00 p.m.—Simultaneous broadcast by KPO and KFI of a program presented by the San Francisco branch of the manufacturers of White King and Mission Bell Soap.
 9:00 to 10:00 p.m.—Palace Hotel Roseroom Dance Orchestra, Gene James director.
 10:00 to 1:00 a.m.—Walter Krausgrill's Balconades Ballroom Orchestra.

"SUPER-HET" OWNERS!

Do you fight the elements, or do you get real reception?

With our system of construction and
TRANSTROM INTERSTAGE TRANSFORMERS

We Are Getting Unbelievable Results at Fifth and Broadway!

INSPECTION INVITED

SIERRA RADIO LABORATORIES

318 W. Fifth St.

Los Angeles, Calif.

VAndike 6464

NOW THE **SUPREME R-F 5** IS SOLD
FACTORY DIRECT TO YOU
5-Tube Console Complete



\$59 Built-in speaker, large tubes, 100 A. H. Rubber Case Battery, even the inside aerial is included—nothing else to buy.

Selectivity :: Quality :: Distance

New Modified S. L. F. condensers allow ample separation of low wave lengths and gives absolute selectivity on all stations. Using Kellogg's laboratory grade transformers assures you of tone perfection, and for distance the utmost in sensitivity has been achieved through proper design of condensers and inductance.

Made of Finest Parts Obtainable

The Supreme—Made of the finest of material such as Kellogg, Yaxley, Carter, C. R. L., Benjamin, Bakelite coils.

Order Your Set Today

and you'll say, like everyone else that hears the Supreme, "That's the best receiver I ever heard—it's wonderful." It's simply not equalled for purity of tone or fidelity of reproduction. Remember every part is guaranteed to you—you take no chances.

THE PATTERSON FACTORY TO YOU SALES PLAN

puts a guaranteed \$155 console, 5-tube receiver in your home for cash at about \$35 less than the actual wholesale price. Volume production is the answer.

Patterson Radio Manufacturing. Co.

Established 1921

239 S. Los Angeles St.—VA. 8139

Los Angeles, Calif.



"MAC"

San Francisco, California—268 Meters

KFRC

Owned and Operated by Don Lee,
California Distributor for Cadillac Motor Car.
50 WATTS—1120 KILOCYCLES
LANSING TEVIS, Manager
HARRISON HOLLIWAY, Station Master
"Keep Forever Radiating Cheer"

DAILY EXCEPT SUNDAY—

5:30 to 6:00 p. m.—Mac and His Gang.
6:30 p. m.—Stage and Screen and Police Reports.
8:30 to 7:00 p. m.—Studio Program.

WEEK COMMENCING SUNDAY, JANUARY 9, 1927

SUNDAY, JANUARY 9—

6:30 p. m.—The Stage and Screen.
8:30 to 10:00 p. m.—Dance music by Walter Krausgrill's Orchestra.

MONDAY, JANUARY 10—

10:00 to 11:00 a. m.—Household Hints by Mary Lewis Haines, domestic science editor of The Call.
7:00 to 7:30 p. m.—KFRC Hawaiians.
8:00 to 9:00 p. m.—Around the Campfire with Mac.

TUESDAY, JANUARY 11—

5:00 to 5:15 p. m.—"Fifteen Minutes at the Ampico," courtesy Lee S. Roberts, Inc.
5:15 to 5:30 p. m.—Health Talk by George Winter Sanborn.
7:00 to 7:30 p. m.—Dance music by "Puss" Donahoo and his Hotel Oakland Orchestra.
8:00 to 8:30 p. m.—KFRC Radio Movie Club.
8:30 to 11:00 p. m.—Dance music by Walter Krausgrill's Orchestra.

WEDNESDAY, JANUARY 12—

10:00 to 11:00 a. m.—Household Hints by Mary Lewis Haines, domestic science editor of The Call.
8:10 to 10:30 p. m.—Grand Opera, "Il Trovatore," presented by Lee S. Roberts, Inc., Chickering-Ware Rooms, directed by Frank Moss.
10:30 to 12:00 midnight—Dance music by Walter Krausgrill's Orchestra.

THURSDAY, JANUARY 13—

7:00 to 7:30 p. m.—Ray Towle and his Novelty Band.
8:00 to 9:00 p. m.—Mona Motor Oil Program.
9:00 to 10:30 p. m.—Dance Music by Walter Krausgrill's Orchestra.

FRIDAY, JANUARY 14—

9:00 to 10:00 a. m.—KFRC Bargain Hour, direction Albert White.
5:00 to 5:15 p. m.—Fifteen Minutes at the Ampico, courtesy Lee S. Roberts, Inc.
5:15 to 5:30 p. m.—Health Talk by George Winter Sanborn.
7:00 to 7:30 p. m.—Program courtesy Russel-Colvin Co.
8:00 to 10:00 p. m.—Education Program.
10:00 to 11:00 p. m.—Dance music by Walter Krausgrill's Orchestra.

SATURDAY, JANUARY 15—

8:30 p. m. to 1:00 a. m.—Dance music from the Balconades Ballroom.

OUR NEW ADDRESS, 407 E. Pico St.—TELEPHONE WE. 1401

NATIONALLY ADVERTISED **TRICKLE CHARGERS**, SPECIAL \$8.15

UX Universal Sockets, 25c Alltron Blue "A" Tubes, 95c

Well Known AUDIO TRANSFORMERS at \$1.88

.00035 SLF VARIABLE CONDENSERS, 69c; .0005, 73c

625 SOUTH MAIN
OPEN EVENINGS

J. C. RENDLER
EST. 1904
RELIABLE
AUDIO & ELECTRIC

L. A.—TR. 4281
MAIL ORDERS



R. M. Bitzer
Announcer

Oakland, California—303 Meters

KTAB

THE ASSOCIATED BROADCASTERS
ADA MORGAN O'BRIEN, Director

DAILY EXCEPT SUNDAY—

8:45 to 9:15 a. m.—Prayer Service.
9:15 to 9:45 a. m.—Shopping and women's hour.
5:00 to 6:00 p. m.—Children's hour.
6:30 to 7:00 p. m.—Twilight hour.
7:00 to 7:30 p. m.—Shopping hour.

WEEK COMMENCING SUNDAY, JANUARY 9, 1927

SUNDAY, JANUARY 9—

9:45 to 10:45 a. m.—Prof. E. C. Linsley's Bible Class.
11:00 a. m. and 7:45 p. m.—Church service Tenth Avenue Baptist Church.

MONDAY, JANUARY 10—

8:00 to 10:00 p. m.—Slavic music.

TUESDAY, JANUARY 11—

8:00 to 8:15 p. m.—"Fifteen Minutes with Stamp Collectors."
8:15 to 10:00 p. m.—Studio program, featuring the KTAB Quartet.

WEDNESDAY, JANUARY 12—

8:00 to 10:00 p. m.—Women's Chorus.

FRIDAY, JANUARY 14—

8:00 to 9:00 p. m.—Oden and Richard's Hawaiian Troupe, Mr. Jack Burt, Baritone, and Hazel Ford Wood, contralto.
9:00 to 10:00 p. m.—Goat Island Goats.

OUR NEW ADDRESS, 407 E. Pico St.—TELEPHONE WE. 1401



THE NEW A-1 WOODWORKING COMPANY BATTERY TABLE—
a table of very pleasing proportions, with an attractive high-lighted finish. Constructed of Philippine Mahogany in two sizes.

No. 1025. 13½ x 27 in. Top; 27 in. High — \$12.50 List
No. 1026. 13½ x 36 in. Top; 27 in. High — \$14.00 List

Prices F. O. B. Los Angeles

A-1 WOODWORKING COMPANY

1332-1342 SAN JULIAN ST.

LOS ANGELES, CALIF.



Edward L. Mitchell
Announcer

Oakland, California—361.2 Meters

KGO

4000 WATTS—830 KILOCYCLES
PACIFIC COAST STATION, GENERAL ELECTRIC CO.
Phone Fruitvale 5980

DAILY EXCEPT SUNDAY—

- 1:30 and 6:00 p. m.—Stock and weather reports. Baseball scores.
3:00 to 4:00 p. m.—Hotel Leamington concert.
4:00 to 5:00 p. m.—Aunt Samantha's chat.
6:00 to 6:55 p. m.—Bem's Little Symphony Orchestra.

WEEK COMMENCING SUNDAY, JANUARY 9, 1927

SUNDAY, JANUARY 9—

- 11:00 a. m.—Trinity Episcopal Church service.
2:40 p. m.—San Francisco Symphony Orchestra concert, direction of Alfred Hertz.
6:30 to 7:30 p. m.—Concert by Bem's Little Symphony Orchestra.
7:30 p. m.—Weather Bureau reports.
7:35 p. m.—Trinity Episcopal Church service, San Francisco.
9:00 to 10:00 p. m.—Concert by Bem's Little Symphony Orchestra.

MONDAY, JANUARY 10—

Silent Night.

TUESDAY, JANUARY 11—

- 8:00 to 9:00 p. m.—The Pilgrims. Eveready program by National Carbon Company.
9:00 p. m.—"Chats About New Books."

WEDNESDAY, JANUARY 12—

- 5:30 p. m.—"For Instance," by General Jackson.
8:00 p. m.—Farm program.
8:10 p. m.—(Series—"The Cattle Industry on the Pacific Coast."
8:20 p. m.—An interview with the Agricultural Economist.
8:30 p. m.—W. O. W. Male Trio.
8:40 p. m.—Address. "The Railroad Commission and the Farmer."
9:00 p. m.—W. O. W. Male Trio.

THURSDAY, JANUARY 13—

- 5:00 to 6:00 p. m.—George W. Ludlow, "Friend to Boys."
8:00 to 9:00 p. m.—Program by Arion Trio, KGO studio staff, and the KGO Minstrels.
9:00 p. m. to 12:00 midnight—Phil Lampkin's Musical Bears.

FRIDAY, JANUARY 14—

- 11:10 a. m.—Prudence Penny, Home-making Talk.
8:00 to 9:00 p. m.—Program by distributors of Radio Corporation of America.

SATURDAY, JANUARY 15—

- 12:30 p. m.—Weather.
12:33 p. m.—New York stocks. z
12:40 p. m.—San Francisco stocks.
8:00 p. m.—"Weekly Sport Review," by Al Santoro.
8:15 to 9:15 p. m.—Program from Hotel Leamington, Oakland.
9:15 p. m. to 1:00 a. m.—Dance music, Wilt Gunzendorfer's Hotel Whitcomb Band.

OUR NEW LOCATION, 407 E. PICO ST., LOS ANGELES

THE TECHNICAL LABORATORY OF N. E. BROWN I. R. E., A. I. E. E., A. S. M. E.

with its thousands of dollars worth of equipment and years of experience, is in a position to improve the selectivity, tonal quality and performance in general of your radio equipment, be that what it may. Special and authorized R. C. A. (Radiola) and Silver-Marshall service. No other laboratory on the coast is as thoroughly equipped with precision instruments. Special equipment for the testing and matching of superheterodyne interstage transformers. The highest degree of accuracy guaranteed. Tests and reports on parts and equipment.

Telephone THornwall 0270 for appointments

6805 So. Western Avenue

Los Angeles

References: California Bank, Mercantile Agencies and Our Customers.

OUR EXCEPTIONAL OFFER

*Get the Two Greatest Radio Magazines
For Almost the Price of One!*

SAVE \$2.00

RADIO NEWS—The National Radio Monthly
with the largest circulation and following of
any Radio publication in the world—

Regular Price \$2.50

RADIO DOINGS—The Leading Pacific Coast
Radio Weekly—the Radio authority of the
Pacific Coast—

Regular Price \$3.00

These two leaders in their respective fields—the great
National Monthly and the great Pacific Coast Weekly—

BOTH NOW FOR \$3.50

You Can't Afford to Pass This Offer By

Attach Money Order, Check or Currency to the Coupon and Mail to Us
Right Now

RADIO DOINGS,
407 E. Pico Street,
Los Angeles, Calif.

Or 406 New Call Bldg.,
San Francisco, Calif.

Send me RADIO DOINGS and "RADIO NEWS" for one year.
I enclose \$3.50.

Name.....

Address.....

City and State.....

(Specify NEW or RENEWAL)

R-2



Paul R. Helmeyer
Announcer

Portland, Oregon—491.5 Meters

KGW

1000 WATTS—610 KILOCYCLES
THE MORNING OREGONIAN
"Keep Growing Wiser"

DAILY EXCEPT SUNDAY—

- 7:15 a. m.—Setting up exercise.
9:45 to 10:00 a. m.—Women's health exercises.
10:00 to 11:30 a. m.—Town Crier, weather reports, news items.
12:30 to 1:30 p. m.—Noon concert.
6:00 to 7:00 p. m.—Dinner Concert.
7:30 to 7:45 p. m.—Weather and market reports

WEEK COMMENCING SUNDAY, JANUARY 9, 1927

SUNDAY, JANUARY 9—

- 10:55 a. m. to 12:30 p. m.—Morning service from St. Stephen's Pro-Cathedral.
7:30 to 9:00 p. m.—Evening services from the Hinson Memorial Baptist Church.
9:00 to 10:00 p. m.—Concert by the Chevrolet Little Symphong Orchestra.

MONDAY, JANUARY 10—

- 7:00 to 7:30 p. m.—Children's program, courtesy Kerr Gifford Company.
8:00 to 8:30 p. m.—Vaudeville entertainment.
8:30 to 9:15 p. m.—Portland Symphony Orchestra, from Municipal Auditorium.
9:15 to 10:00 p. m.—Vaudeville entertainment.
10:00 to 12:00 p. m.—Dance music by Cole McElroy's Orchestra.

TUESDAY, JANUARY 11—

- 2:00 to 3:00 p. m.—Women's matinee.
7:00 to 7:30 p. m.—Children's program, broadcast simultaneously with KFOA and KHQ.
8:00 to 10:00 p. m.—Educational program.
10:00 to 12:00 p. m.—Dance music, featuring Herman Kenin and his orchestra.

WEDNESDAY, JANUARY 12—

- 8:00 to 9:00 p. m.—Concert presented by the Western Autou Supply Company.
9:00 to 10:00 p. m.—Concert, presented by Maxwell House Coffee Company.

THURSDAY, JANUARY 13—

- 7:45 to 8:00 p. m.—Lecture, given under the auspices of the Catholic Truth Society of Oregon.
8:00 to 10:00 p. m.—Vaudeville entertainment.

FRIDAY, JANUARY 14—

- 2:00 to 3:00 p. m.—Women's matinee.
7:00 to 7:30 p. m.—Children's program, courtesy Knight Shoe Company.
8:00 to 8:30 p. m.—Weekly meeting of the KGW Movie Club.
8:30 to 10:30 p. m.—Dance music by Cole McEnroy's Orchestra.
10:30 to 12:00 p. m.—Weekly frolic of the Keep Growing Wiser order of Hoot Owls.

SATURDAY, JANUARY 15—

- 7:00 to 7:30 p. m.—Children's program
9:00 to 10:00 p. m.—Concert, Calumet String Quartet.
10:00 to 12:00 p. m.—Dance music, featuring Herman Kenin and his orchestra.

OUR NEW LOCATION, 407 E. PICO ST., LOS ANGELES



THE COMPLETE BOOTER AERIAL

You get the equivalent of a 100-foot aerial for distance and volume, with the selectivity of a 50-foot aerial.

(A Set of Six Booters Alone, \$1.00)

THE F. E. WOLTERS CORP.

Radio Division

324 N. San Pedro St.

Los Angeles, Calif.

Your **ELIMINATE STORAGE "A" BATTERY**

BLAX A.C. POLARIZER

Thousands Throughout the World Are Getting Satisfaction from this Little "Grief Saver"

Be Sure its a **BLAX**

Blax Polarizers Are the Standard It's the Original—Beware of Imitations

USE BLAX HEAVY DUTY TRANSFORMER

Especially Designed and Wound Furnishes "A" Current for Radio Sets **REQUIRED FOR 3 TUBES OR MORE IMPROVES 2 TUBES**

Equip Your Set Now

Blax Polarizer (Special).....75c
 Blax Polarizer (Tested in set).....\$1.00
 Blax Heavy Duty Transformer.....\$2.00
 Blax 3-Tube Blue Print......25c
 If Your Dealer Can't Supply You, Send Now

BLACK BROS., INC.
 919 Black Bldg. Los Angeles

McKinley "B" Power Unit



A Perfect "B" Eliminator Giving a Maximum and Constant Power Supply

Absolutely no hum on local or distant reception.

Designed for the D-X fan.

100-Volt Units.....\$20.00
 100-Volt Heavy Duty..... 25.00
 150-Volt..... 35.00

Satisfactory Service Has Made Our Business Grow

Phone York 1828 for Demonstration

McKinley Radio Mfg. Co.
 10905 S. Main St. Los Angeles
 Excellent Dealer Proposition

OUR NEW ADDRESS, 407 E. Pico St.—TELEPHONE WE. 1401

YOUR NEIGHBORHOOD DEALER

FEDERAL AND RADIOLA

RADIOLA

RCA and **FEDERAL Ortho-Sonic**

Two Ways of Saying
 "Radio At Its Best"

HETZEL RADIO SERVICE

"Hetzel Radios Excel"
 8303 Santa Monica Blvd.
 Phone GRanite 5874

S
A
L
E
S

Authorized Dealer

RCA

S
E
R
V
I
C
E

SCHRADER-ROSS

3205 West Washington Blvd.
 Open Evenings EMpire 2966



Freeman H. Talbot
Announcer

Denver, Colorado—322.4 Meters

KOA

930 KILOCYCLES—5000 WATTS
GENERAL ELECTRIC COMPANY
Pacific Standard Time
"Rocky Mountain Broadcasting Station"

DAILY EXCEPT SATURDAY AND SUNDAY—
10:45 a. m.—Weather, Stock and Produce Reports.
11:15 a. m.—Organ Recital.
5:00 p. m.—Stock and Market Reports.
7:00 p. m.—Musical Program.
DAILY EXCEPT SUNDAY—
11:15 a. m.—Organ recital.

SUNDAY, JANUARY 9—

10:00 a. m.—Service from First Baptist Church, Denver.
5:30 p. m.—Organ recital from First Baptist Church.
6:15 p. m.—Evening service from First Baptist Church.

MONDAY, JANUARY 10—

6:30 p. m.—Children's hour.
7:15 p. m.—Studio program presented by the Greeley Chamber of Commerce.

TUESDAY, JANUARY 11—

2:30 p. m.—Housewives' matinee.
6:30 p. m.—Farm Question Box.
8:00 p. m.—Radio instruction in auction bridge, conducted by studio players.

WEDNESDAY, JANUARY 12—

6:30 p. m.—Wynken, Blynken and Nod time.
7:15 p. m.—Studio program presented by the Public Service Company of Colorado.

THURSDAY, JANUARY 13—

2:30 p. m.—Housewives' matinee.
3:30 p. m.—Culinary hints, Mrs. Clara Hoover. Silent night.

FRIDAY, JANUARY 14—

12:00 noon.—Organ recital, Aladdin Theatre, Denver.
2:30 p. m.—Housewives' matinee.
6:30 p. m.—Preview of International Sunday School lesson.
7:15 p. m.—Studio program, presented by the Denver Daily News, Denver.

SATURDAY, JANUARY 15—

9:30 p. m.—Dance program, Scheurman's Colorado Orchestra, from Coronado Club, Denver.

Radio Cabinets

ANY STYLE BUILT TO YOUR LIKING

*Beautify
your home
with one of
our radio
cabinets.
You select
the style,
leave the
rest to us.
You must be
pleased.*



*This model
made of
Black
Walnut,
having space
for cone
speaker and
battery
equipment.
Many other
models to
select from.*

Table Model Price \$17.50

OPEN EVENINGS AND SUNDAYS

GOODWORK RADIO CABINET SHOP

6707 Avalon Blvd., Los Angeles

Discount to Dealers

Mohawk Radio

One  Dial

THE PIONEER ONE-DIAL SET

Any of the following dealers will be glad to demonstrate a set for you. Once demonstrated, you will buy.

LOS ANGELES

L. A. Duncan
2891 West Pico
Bob Brown
4353 South Figueroa St.
Monarch Radio Company
2189 W. Washington Blvd.
L & Y Electric Co.
8864 West Pico
Normandie Radio
5069 Hollywood Blvd.
Barney Campbell
8210 Sunset Blvd.
Top Notch Radio
747 S. Main St.
ANAHEIM, Schmidt Music Co.
217 West Center
GLENDALE—Alexander Radio
Shop, 216 North Brand
WHITTIER, H. D. Squires
218 South Greenleaf
LONG BEACH, R. W. Haynes
137 East Fourth
CARLSBAD, Standard Garage
WILMINGTON—Kelm Radio
SANTA PAULA—Kit Carson
ONTARIO—Davis Electric Co.

SAN DIEGO

Nelson Radio
Fains Radio Shop
SOLANO BEACH, I. E. Connor

REDLANDS, Munzig Radio
1017 Tribune St.
CALEXICO, City Electric Co.
313 Second St.
INDEPENDENCE, Sterling Bros.
Garage
BISHOP, Exide Battery Shop
SAN CLEMENTE, San Clemente
Electric Shop
LONE PINE, James G. Ducker
MONROVIA, J. H. Terry
416 South Myrtle
SANTA BARBARA, Channel Elec-
tric Co., 523 Anacapa St.
SANTA PAULA, Kit Carson
SANTA MONICA Bay Dist. Dealer,
Warren Radio Shop, 1548 17th St.
SEAL BEACH, D. W. Collier
321 Main St.
LOMITA, Calkins Hdwe. Co.
TORRANCE, De Bra Radio Co.
BELLFLOWER, S. E. Moore
617 Somerset St.
SAN PEDRO, Journey Electric Co.
380 Sixth St.

PASADENA

Lee Radio
922 E. Colorado
Wilson Music Co.
180 E. Colorado
Radio Doc
1581 Walnut St.

COOK-NICHOLS CO.

411 S. San Pedro St.
Los Angeles, Cal.

482 S. Fair Oaks Ave.
Pasadena, Cal.

"WHO'S WHO" In RADIO

—and the reasons why

Clarence E. Ogden

Radio has brought many young men to the front and, among them Clarence E. Ogden, president of the Kodel Radio Corporation.

Being asked how he came to get interested in the radio business, Ogden



said: "Going back ten or twelve years I was working on a moderate salary for a big electric house in Cincinnati and was wondering what I could do to increase my income, as I had lately been married. I had been making for my own use charging panels of special design, which it was impossible to get from any of the electrical houses. These

worked so well, that I wondered if a market could not be developed for them. At that time I was acquainted with a hustling salesman who had charge of a wide territory. I discussed with him the possibilities of marketing these panels. Well, to make a long story short, we secured more business than we could take care of. My factory was my cellar, and I worked far into the night, my good wife helping me to wind the coils. Business increased so that we had to have some of the panels built by an electrical house. By the time my salesman friend arrived in town we had enough stock and money on hand to incorporate a \$10,000 company, and we rented a loft, employed a few people, and that was the start of the Kodel Company."

Today the Kodel Company is one of the largest manufacturers of Charging equipment and Battery Eliminators in the world, this within the short space of five years.

President Ogden is now visiting the Pacific coast, dividing his time between Los Angeles and San Francisco.

We are glad that Mr. Ogden has visited the western part of the country and has had an opportunity of seeing for himself the healthy condition of the radio industry in this territory. He was so much impressed with conditions here that he has decided to keep a big stock on hand in Los Angeles to supply the trade and also to install a service station here.

Timely Trade Topics

On December 23 last, between the hours of 4 and 6 a. m., thieves broke into the establishment of the Hetzel Radio Service, 8303 Santa Monica Blvd., Los Angeles, and made away with about \$800.00 worth of merchandise. Radio dealers and buyers thruout the West are urged to be on the lookout for these miscreants. Following is a description of the items taken: One RCA 24; one RCA 26, serial number 211023; one RCA 102 speaker, serial number 200875; one Federal Ortho-Sonic D110, serial number 115118; one Kemper Portable; one Western Electric Cone Speaker. Any information should be wired immediately to nearest police authorities and to Mr. Ralph Hetzel, at above address. Phone GRanite 5874.

The fourth edition of the Radio Key Book by E. N. Rauland, All American Radio Corporation, is now off the press and ready for distribution. It contains such information of use to radio users, new things in radio, hookups and how to read them, practical hints for building and servicing sets, circuits with full constructional information and illustrations.

Lombard J. Smith, Southern California representative for Balkite, Dudlo, Samson, Muter, and Apex, has returned home after an extended trip to the various factories he represents. To illustrate the demand for trickle chargers, Lombard tells us that the Balkite Co. have put out over one million of this type.

Sidney N. Spector of the Spector Co., called in to see us on his way to New York, where he is going to join the ranks of the benedicts. Congratulations and good luck, Sidney. The Spector Company are Pacific coast representatives for Acme Apparatus Co., Alden Mfg. Co., and Polymet.

Due to the large amount of business developed by the Kodel Radio Corporation on the Pacific coast, Clarence E. Ogden, president, has made arrangements to install a service station in Los Angeles. A large stock will also be carried to supply the territory at the local office. Bertram Smith, 400 San Fernando building, Los Angeles, is the representative for the Kodel Company.

Leicester M. Mingins, president Twentieth Century Radio Corporation, Brooklyn, has been elected president of the Garod Corporation, Belleville, N. J., manufacturers of Garod Electric Power Receivers. The Twentieth Century Radio Corporation is the largest distributor of Garod Receivers in the country.

E. N. Rauland, president of the All American Radio Corporation, will visit the Pacific Coast during the month, according to Carl A. Stone, Pacific Coast representative of this company.

The United States supplied 7 per cent of the annual radio purchases of Sweden, decreasing the value of its shipments approximately 23 per cent as compared with the year before.

CROSLY SPECIALIST

Perfect tone quality, selectivity and distance on any Crosley. Have yours improved and balanced at small cost. Open evenings, 6 to 8.

CHILDS LABORATORY

1187 W. 24th STREET

BEacon 7445

LOS ANGELES, CAL.

APPROVED BY 18 MONTHS OF PUBLIC USE—NO OTHER BATTERY IS LIKE IT



Eveready Layerbilt "B" Battery No. 486, the Heavy-Duty battery that should be specified for all loud-speaker sets.

The Layerbilt patented construction revealed. Each layer is an electrical cell, making automatic contact with its neighbors, and filling all available space inside the battery case.

Practical tests have shown this to be the most economical of "B" batteries

IN DAILY use in the home, Eveready Layerbilt "B" Battery No. 486 has fulfilled the promises made for it in laboratory tests. More than a year's study of the performance of this battery in the hands of the public has shown that it is the most satisfactory and most economical "B" battery ever developed. All loud-speaker sets require Heavy-Duty batteries — and the Layerbilt has proved itself absolutely the best of them all.

If you are now using the smaller, Light-Duty batteries, the Eveready Layerbilts will give you twice the service though they do not cost anything like twice as much. If you are already using Heavy-Duties, the Layerbilt, the longest lasting Heavy-Duty ever built, will run your set at least 25 per cent longer, and again you will save money. Unless Eveready Layerbilts now are connected to your set, you spend more on "B" batteries than you should, and you can have no idea how good a "B" battery can be. The Layerbilt holds a surprise in store for you.

Eveready Layerbilt's unequalled service is due to its unique construction. All other cell "B" batteries are assembled of

cylindrical cells, with many soldered connections, and a great deal of space wasted between the cells. The Layerbilt is built up of layers of flat current-producing elements that make connection with each other automatically, and that fill all available space inside the battery case. It is every inch a battery. In it you get more active materials than in any other battery and the Layerbilt construction makes those materials much more efficient current producers.

Those are the convincing reasons why the Eveready Layerbilt has proved itself the longest lasting, most economical and reliable "B" battery ever built.

Just remember this about "B" batteries — Heavy-Duty batteries are more economical than the smaller Light-Duty batteries on all loud-speaker sets, and the patented exclusive Eveready Layerbilt No. 486 has proved itself to be absolutely the most economical of all.

NATIONAL CARBON COMPANY, Inc.
New York San Francisco

Unit of Union Carbide & Carbon Corporation

Broadcasters' Digest

Another blonde radio blues singer has been added to the array of talent assembled at KFVB, Warner Brothers' studio radio station. The newcomer is Virginia King, who, though a professional singer, has never before appeared before the microphone. June Parker and Peggy Mathews are already listed among the popular "preferred type" at KFVB.

A new pleasing voice over KNX, the Evening Express, is that of Miss Altheada Oliver, a mezzo soprano. Sopranos as a rule do not conform to the liking of most radio audiences, so the management at KNX feels satisfied when it runs across a voice that "goes over" in nice style.

The Atlantic Broadcasting Corporation of New York has purchased the Grebe group of stations, including the new super-power 5-KW transmitter WAHG and the 500-watt station WBOQ. The new organization will have its New York studio on the seventeenth floor of 113 West Fifty-second Street, occupying an entire floor of Steinway Hall. All the transmitters will be located in Richmond Hill, Long Island.

After January 1, WGY will be included in the stations affiliated with the National Broadcasting Company and many of its programs will be provided by that company. WGY will be on what is known as the "Red Network" with WEAJ as the key station.

The House has passed a bill that the ether within the limits of the United States is "the inalienable possession of the people," but no one seems to know exactly what ether is.

Radio engineers are considering the possibilities of further safeguarding commercial airplanes between Venice and Vienna which fly over the Alps en route.

Hatch Graham draws many requests from KFVB fans, a checkup of the nightly records of Warner Brothers' studio radio station reveals. Hatch has a quaint manner of putting his homely old songs on the air with the aid of his trusty banjo that has gained him an immense following.

"And now," said the announcer, during a recent program, "Madame Alda will conclude her second group with a Finnish song."

In other words, a Finnish finish.

Steinite Interference Eliminator



New 1927 Model 400,000 Sold

\$1 Better reception or your money back. Bank guarantee.

Assembled complete, attach to aerial in 2 minutes. No tools. Doesn't disturb present log. No additional tubes or batteries.

NOTICE: If your dealer cannot supply you, send Dollar Bill direct and we will ship prepaid.

NO RADIO SET COMPLETE WITHOUT IT! Especially necessary for 1 and 2 dial controlled sets.

Select Stations at Will. Cut out interference and undesired stations. Tune in loud and clear. Amazing results—Tube or Crystal, except where loop antenna used. Absorbs Static—Increases volume.

STEINITE LABORATORIES

814 So. Olive St. Los Angeles, Calif.
Phone TUcker 7262

Steinite 71-Tube No Battery Radio, \$125.00. Loud speaker built in. Complete, \$150.00. Nothing to buy. Operates from light socket. 6-Tube Battery Set, \$45. Crystal Set, \$25. Aerial Eliminator, \$1. Noise Eliminators, \$1 set 5 or 25c each. Crystals, 50c—3 for \$1.

RADIO MANUFACTURERS SUPPLY CO.

1000 So. Broadway

Los Angeles

On the Corner of 10th and Broadway

STANDARD PARTS and KITS

Discounts to Builders

WRITE FOR PRICE SHEET

EXAMPLE!

BATTERIES

| | |
|---------------------------------------------------------------------|---------------|
| Large 45-Volt "B"..... | \$1.95 |
| Heavy Duty 45-Volt "B"..... | \$2.95 |
| 100-Amp. Storage "A," Rubber Case, 11 Plates, Guaranteed..... | \$7.85 |

AUDIO TRANSF.

| | |
|---------------------------------------------|---------------|
| A.K. Ratio 3½-1, Manufacturers Type..... | 90c |
| W.R.C. Ratio 3½-1, Manufacturers Type... | \$1.30 |
| A.K. Ratio 3½-1, Manufacturers Type... | \$1.35 |

| | | |
|-------------------------------------------------------|-----------------------------|---------------|
| Improved Reception, High Testing R.M.C. Amplifying | Reading, High Tubes..... | \$1.15 |
|-------------------------------------------------------|-----------------------------|---------------|

SPEAKER UNITS

| | |
|----------------------------------------|---------------|
| World Famous, Manufacturers Type... | \$4.75 |
| Baldwin, Limited Quantity..... | \$5.90 |
| Ovenshire, Symphony Unit..... | \$8.65 |

VAR. COND.

| | |
|------------------------------------------|---------------|
| N. Y. Coil Selector, .00025..... | 60c |
| N. Y. Coil Selector, .00035..... | 75c |
| General Instrument, .00035-.0005..... | \$1.45 |

"ALL HENRY"

All Our Patrons Report Chicago, Some Report New York, Through Locals

BLUE PRINTS

All Circuits—10 Cents Each



RADIO MANUFACTURERS SUPPLY CO.

1000 So. Broadway

LOS ANGELES

ON THE CORNER of 10th and BROADWAY

The 1927 deluxe model 45,000 cycle superheterodyne by Gerald M. Best is announced in "RADIO" for February---on sale at all news stands January 28th. This "Super-de-luxe-super" is Best's crowning achievement. The hundreds of thousands of followers of Best's super will realize the importance of this announcement.

And that's not all. The February issue of "RADIO" also shows how to use the Infradyne amplifier on the Bremer Tully, Silver Marshall, Browning Drake, and Hammarlund Roberts HI*Q receivers. What a difference this amplifier makes to your present receiver. Another feature in February "RADIO" is the construction of a radio-electric phonograph. A brand new idea by an eminent authority. Everybody can cash in on this scoop. About a dozen other feature articles round out the greatest issue in our ten years' history of radio magazine publishing. It will pay you to subscribe to "RADIO" for one year. It costs but \$2.50 and insures regular receipt of copy.

PACIFIC RADIO PUBLISHING CO., Inc.

Pacific Building

San Francisco, Calif.

THE ADVANCED HANDY

TRICKLE-BOOSTER CHARGER

Converts your present battery into an up-to-date "A" Power Unit.

For Either 6 or 4 Volt
Storage Batteries

Absolutely quiet — Uses the long-life, 2 ampere bulb.

Great Flexibility — Long Life — Maximum Efficiency.



The Solution to the Radio "A" Power Problem



The Handy Trickle-Booster Charger with its "slow and fast" rate feature, gives the radio fan two chargers in one compact unit at a price lower than the standard battery charger. Should be permanently connected.

Ideal for console and built-in battery cabinets.

110 Volts, 50 or 60 Cycle—Complete—\$15.00

Ask Your Dealer for a Demonstration

C. C. LAWTON CO.

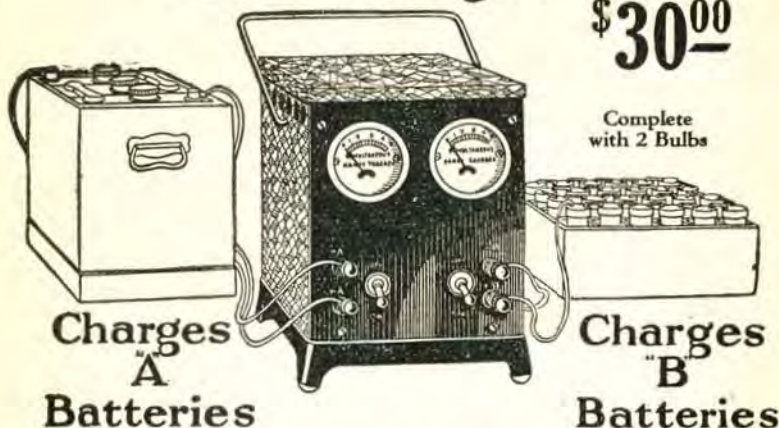
1125 Wall Street

Los Angeles

Westmore 3291

The Simultaneous Charger

\$30⁰⁰-



Complete
with 2 Bulbs

Charges
"A"
Batteries

Charges
"B"
Batteries

Both at Once

Connects to light socket. Operates without disconnecting batteries from set

Now, at a remarkably low price, you can convert your set to a light socket receiver. Just connect the new Simultaneous Charger to "A" and "B" storage batteries and plug into the house lighting current. After using the radio, turn on the switch. Batteries are brought up together to full strength by morning. No more lost programs or poor reception due to weakened condition of batteries. No more removal of batteries for recharging.



The Handy Trickle-Booster Charger combines a trickle charger and a fast rate charger all in one small unit. Bulb type, \$14.00 Complete.

The Simultaneous Charger, invented by Interstate, charges "A" and "B" batteries singly or both at once. No danger of overcharging as current tapers off as battery becomes charged. Absolutely noiseless in operation. Nothing to wear out. It contains no liquids or acids to spill and ruin rugs or furniture. It is complete in every detail, having ammeter and milliammeter to indicate rate of charge. Encased in beautiful all metal walnut finish container. Size 6½" x 6½" x 9". Employs standard rectifier Bulbs. No other charger like it. None so simple, convenient and dependable.

Ask your dealer for demonstration

INTERSTATE

St. Louis ELECTRIC COMPANY U.S.A.

Local Representative, W. D. RHOADES, 3923 Revere Ave., Los Angeles

Distributors

C. C. LAWTON CO.
YALE RADIO & ELECTRIC CO.

PACIFIC WHOLESALE RADIO, Inc.
WESTERN AUTO ELECTRIC CO.

Federal Ortho-Sonic

Model D40
Ortho-
Sonic
Console



D-40 Ortho-sonic

Priced
at
\$200
(less accessories)

You will like the Model D 40 Ortho-Sonic. Selectivity, tone quality, beautiful appearance, and the ability to bring in distant stations, coupled with the simplicity of tuning, are bound to please you if you purchase this New Model Federal.

Dealers everywhere are ready to demonstrate the superiority of

Federal Ortho-Sonic Radio

Exclusive Wholesale Distributors

YALE RADIO ELECTRIC CO.

1111 Wall St., Los Angeles

Phone WEstmore 3351

This file including all text and images are from scans of a private personal collection and have been scanned for archival and research purposes. This file may be freely distributed, but not sold on ebay or on any commercial sites, catalogs, booths or kiosks, either as reprints or by electronic methods. This file may be downloaded without charge from the Radio Researchers Group website at <http://www.otrr.org/>

Please help in the preservation of old time radio by supporting legitimate organizations who strive to preserve and restore the programs and related information.