

Tuned Bridge Set Construction Det.  
Gold Cup Standing; KFRU in Pictures

# Radio

EVERY  
WEEK

INVEST  
PROG  
RAM

REG. U. S. PAT. OFF

Vol. XIV

Copyright 1925  
By Radio Digest Publishing Co.

SATURDAY,

## SENDS POWER BY RADIO?

### NEW TRANSMITTER AIRS VOICE OF DIXIE

WSB DEDICATES PLANT IN  
LARGE ATLANTA HOTEL

Pioneer Georgia Station Grows from  
100 to 2,500 Watts Since  
1922 Opening

ATLANTA, Ga.—The Atlanta Journal's third transmitter, an entirely new type of Western Electric station, was dedicated formally at its palatial new quarters in the seven-million-dollar Atlanta Biltmore hotel, Monday, July 13.

Beginning in the spring of 1922 with a homemade 100-watt plant, the first newspaper station in Dixie, WSB, was equipped with the second 500-watt Western Electric transmitter in America in June of the same year and figured prominently as a pioneer trail blazer of the ether.

The new installation gives the "Voice of the South" a power range of from 1,000 to 2,500 watts and is reported to embody refinements in modulation, keenness and clarity heretofore unknown.

The premier broadcast was a gala affair in which every civic interest in Atlanta took part. The governor, mayor, chamber of commerce, musicians' union, fraternal orders and a battalion of nearly 300 entertainers, who have helped maintain WSB's three-year service, joined in the

(Continued on page 6)

Another reason why we look forward to vision by Radio is Frances Reveaux (center), a Ziegfeld "Follies" beauty who took part in WGCP's opening program.



### IMPOSSIBILITY NOW BELIEVED A POSSIBILITY

Italian Invents System

Makes Use of Unexplored Wave  
Band—May Revolutionize  
Future Power Industry

Electric trains without third rail or trolley! Ships propelled by power from shore, and electric power available in the wilderness where it is impossible to run wire lines!

These are the almost certain results from the experiments of the Italian scientist Midali, who has had favorable results in endeavoring to transmit electric energy via wireless. That this work of many years has more to it than usual and is capable of commercial development is evidenced by the fact that the department of commerce had a report of the tests translated from the Italian and forwarded to Radio Digest.

Pioneers in Unknown Field

To accomplish this long desired result it was necessary for Signor Midali to work with wave lengths and frequencies never before attempted by the scientific world, and listed as unknown and unexplored.

(Continued on page 2)

Left, Edwina LaMonte Burchett, heard frequently from the Chicago stations, KFW and WQJ. Below is Marie Prevost of movie fame, snapped recently at KFWB.

CONSENSUS OF OPINION VOTE

Send to Radio Digest, 510 N. Dearborn Street, Chicago To be forwarded by Radio Digest to the Department of Commerce for the attention of members of Congress.

- 1. Do you want less class B (500 watts or more power) stations?
2. Shall B stations be reduced to 94 in number, so that they can be accommodated satisfactorily in the "ether roadways" now available for the use of broadcasting stations?
3. How far away, approximately, is the nearest class B station?
4. Are you troubled by B stations heterodyning and interfering with one another?
5. Have you read a description of the Kintner plan?
6. Are you in favor of it or some similar plan which will help clear the air of the present "traffic" congestion?
7. Do you favor the appointment of an unbiased, non-partisan broadcasting control board for the settlement of all differences pertaining to broadcasting and the interpretation of present or future Radio legislation?
8. Include separately a list of five stations you like most and five you dislike most.

How many members in your family? Name Address City, County, State (Check here if more blanks are desired) 7-18-25

McNAMEE DOUBLES LEAD OVER GEO. HAY

TOPS GOLD CUP LIST FOR 3RD CONSECUTIVE WEEK

Other Contestants Would Help McNamee But Editor Rules This Unfair

With the coming of hot weather the 1925 Radio Digest Gold Cup race is becoming hotter with the leading contestants nearing the last turn to dash down the stretch to victory for and the title of "World's Most Popular Announcer." Graham McNamee hangs on to top place, having more than doubled his last week's lead over George D. Hay.

A concentrated effort in the East has kept the "Sage" in the lead for three consecutive weeks, but there is no telling how many votes are apt to come out of the great open spaces west of WLS towers to pull the "Old Judge" through when the leaders turn into the stretch.

McNamee has 27,861 votes and George Hay has 21,346, the easterner's lead being 6,515 votes. Will the Central West nose out the East in the final spurt or will a black horse come up from below with a lot of bonus votes and beat the present leaders to the wire?

They Still See-Saw

Farther down the list the first change to be noted over last week's standing is where "Bill" Hay jumped over Lambdin Kay into the eighth position. Other changes show N. Dean Cole and Barnett again changing position down at eleven and twelve, O. E. Becker passing Robert Emery at the fourteen-fifteen mark, and Jerry Sullivan coming up from the field to take "Uncle John" Daggett's place at sixteen.

That Graham McNamee has some ardent supporters in the list of leading announcers is shown by the efforts of two of these, Stanley Barnett of WOC and Robert E. Emery of WEBL, to withdraw from the contest and have their votes credited to the WEAFA favorite. But this cannot be done. It would not be fair to the listeners who have already cast their ballots for Barnett or Emery. Perhaps these listeners might not desire to cast their votes for McNamee for second choice. Their next choice might be George Hay, Gene Rouse or still some other candidate.

For that reason it will be necessary to keep the names of Barnett and Emery in the contest. Those votes cast, or any future ballots made out in favor of these two men, must stand. If their friends wish to support Mr. McNamee, their future ballots must be so marked. So rules the Gold Cup Award editor, in whose hands all such decisions rest.

Standing of Sixteen Leaders

The standing of the sixteen leaders, with the total number of votes accredited to date, at the close of the week is as follows:

Table with 3 columns: Position, Name and Station, Votes. Lists 16 contestants including Graham McNamee, George D. Hay, Gene Rouse, etc.

How to Vote and Get Bonus

Don't miss a single ballot, for when these are turned into Radio Digest in a

group of CONSECUTIVE numbers, extra bonus votes are allowed the announcer for whom you are voting.

The ballots, top of page two, numbered consecutively, will appear in each issue of the Radio Digest until the close of the contest, with the August 22 number.

Each of these ballots will count for one vote when sent in separately. You can hold these ballots until you have 4 that are consecutively numbered, and when they are sent in a bonus of 8 votes will be allowed for your favorite announcer.

For each 8 consecutively numbered ballots your candidates will receive a bonus of 20 votes. For each 12 consecutively numbered ballots, 30 votes. For each 16 consecutively numbered ballots, 40 votes. For each 20 consecutively numbered bal-

lots, 50 votes, and for each 22 consecutively numbered ballots, 60 votes bonus will be allowed.

Send nominations or ballots to the GOLD CUP AWARD EDITOR, Radio Digest, 510 N. Dearborn St., Chicago.

Gen. Lord Reads Radio Policy

WASHINGTON, D. C.—General Lord, director of the budget, now has before him the government Radio policy as drawn up by the interdepartmental Radio advisory committee. Some changes have been suggested by General Lord and these have been made. It is expected that the outlined policy will be brought to the attention of the president for the issuance of a proclamation or such other action as he sees fit.

SEND POWER BY RADIO

(Continued from page 1)

Apparatus for measuring such minute wave lengths has been unknown and there were no pioneers before him to leave precedents on which to work. Such is science, however. When the known phenomena fail to produce the desired end, the trained mind goes on to new fields in search of the solution of a problem.

As any Radio Listener knows, the programs are sent out on invisible currents with wave lengths between 200 and 550 meters long. Other Radio transmission is carried on with wave lengths down to 50, and even, occasionally, 5 meters. Recently it has been found that Radio waves can even be propagated at fractions of a meter length.

Band Explored by Midal

A centimeter is 1/100 of a meter, and we find that when waves get down in length to 2/100 of a centimeter, color is reached known as infra red. The human eye cannot see this color, but scientific apparatus proves its existence. The waves between 38/1,000,000 and 73/1,000,000 of a centimeter register on the human eye as the colors from red to purple and, when slightly shorter, are known as ultra violet. This brings us to the known region of waves around one millimouth of a centimeter long in which Midal has made such important discoveries.

To quote from the Italian's own report as translated by the department of commerce:

"The result obtained is that of transmitting electric energy in the form of alternating current, without excessive losses, but in reality the electric energy is not transmitted as such. The system transforms the electric energy emanating from any source in the form of alternating current, at frequency and tension (voltage) generally employed in industry, into very short electromagnetic waves of about 1,000,000 of a centimeter."

Now the important points in that very concise statement are "without excessive losses," which implies that practically all of the radiated energy arrives where you wish it, and "at frequency and tension generally employed in industry." This latter wording suggests that plain ordinary house lighting current of 110 or 500 volts is utilized.

Not Exactly Like Hertzian Waves

Reading still further in his report we find, "these waves must be of about the size of light waves, and have nothing in common with the Hertzian waves used for Radio communication. These waves, that ought to be called vibrations of the electrons, constitute the means by which the electric energy is transmitted to a distant receiving system, which in turn transforms them into electric current of identical characteristics of that used by the transmitting system."

Midal is correct in his belief that, at these short wave lengths, the transmitted movement might better be called vibrations, because it is doubtful whether, at the unheard of high frequencies employed, there would be any great movement of ether particles out of their positions. The transmitted energy would pass more as a vibration of the individual particles making up space rather than as a wave motion involving an up and down movement of the particles above and below their normal stationary position.

Simple Analogy Explains System

To make this clearer, imagine a small lake whose surface is covered with a single layer of oranges tightly packed together. Now, if a wave is started at one side, the oranges will move up and down, but will still be in the same position after the up and down movement has passed. That is equivalent to Radio.

(Continued on page 6)

CONTENTS

Radio Digest, Illustrated, Volume XIV, Number 2, published Chicago, Illinois, July 18, 1925. Published weekly by Radio Digest Publishing Company, 510 N. Dearborn Street, Chicago, Illinois. Subscription rates, yearly, Five Dollars; Foreign Postage One Dollar additional; single copies Ten Cents. Entered as second class matter at the post office at Chicago, Illinois, under the Act of March 3, 1879.

List of contents including: All the Live News of Radio, KFRU, "The Voice of Oklahoma", Advance Programs for the Week, An Evening at Home with the Listener In, Editorials, Recent Advances in Tuned Radio Frequency Amplification, A. B. C. Course in Radio Fundamentals, Portable and Phonograph Super, Simple Short Wave Receiver, Directory of Radiophone Broadcasting Stations.

Looking Ahead

A Low Cost Filament Lighting Alternating Current Power Unit, for reflex sets and amplifier tubes, can be built cheaply and easily if the directions of William D. Cope, to be given next week, are followed. This article is complete in one part and should be of interest to many set owners.

Encasing the Portable or Phonograph Super will be described by Mr. Ryan in his third and concluding article next week. He will also tell how to arrange the loud speaker horn and operate the set.

WKRC, Kodel Radio Corporation, Cincinnati, is one of the few stations which use two waves alternately. Starting originally as 8MB, it was a pioneer in Radio-casting. Read about its staff and history and see it pictured in next week's issue.

Five More Ballots and Who Will Win? Can George Hay regain his lead in the Radio Digest Gold Cup Award standing? Will he be crowned king of announcers for 1925 as well as 1924? Or will Graham McNamee earn the title? Predictions cannot safely be made. Watch the weekly standing.

"Damped" and "Undamped" Waves were terms more often heard previous to the great increase in Radio popularity as a result of broadcasting. Damped waves were the first used. Undamped are used by the broadcast stations. Professor Moreton's "A B C's" will tell more about waves next week.

Newsstands Don't Always Have One Left

WHEN YOU WANT

Radio Digest

YOU WANT IT!

BE SURE OF YOUR WEEKLY COPY BY SUBSCRIBING NOW

SEND IN THE BLANK TODAY

Publisher Radio Digest, 510 N. Dearborn St., Chicago, Illinois.

Please find enclosed check M. O. for Five Dollars (Six, Foreign) for One Year's Subscription to Radio Digest, Illustrated.

Name Address City State



## NEWS BRIEFS FROM THE BROADCASTERS

### 'KING OF IVORIES' BACK ON AIR ONCE AGAIN

"Roxy" Tours Canada.—Ash is Regular KYW Feature.—Duncan Sisters Are Home

Harry M. Snodgrass, famous "King of the Ivories" who was formerly heard from Station WOS in Jefferson City, Mo., was again heard over the air on June 26. Snodgrass has been signed up by the Keith vaudeville circuit for two years with the stipulation that he was not to broadcast with the exception of a few specified times. He was heard from Station KFJB at Marshalltown, Iowa.

Charlie Wellman, announcer and entertainer at the movie station, KFWE in Hollywood, is making a series of Brunswick records of his songs that have proved so popular via the ether route. His friends will now be able to enjoy his singing from the discs as well as over the air.

"Roxy and His Gang," which is the familiar title given by thousands of Radio fans throughout the country to S. L. Rothafel, and his group of broadcasting artists of the Capitol theater, are away from New York on a three weeks' tour of the Province of Ontario as guests of the Ontario government. They are broadcasting in Toronto.

Two new members have been added to staff of WIBO, Nelson Brothers, Chicago. Joe Allabough, with his ukulele, and Carl Linner, pianist are the new men. Mr. Allabough, although a new voice on Radio, has already gained a multitude of friends and admirers. Mr. Linner, has already been heard over Chicago stations.

A summer feature of Westinghouse Station KYW, Chicago, is the broadcasting of Paul Ash's entertainment right from the stage of McVickers theater each Wednesday and Friday evening.

Paul A. Greene, manager of Station WSAI, the United States Playing Card company, Cincinnati, is arranging to broadcast a series of talks by leading golf professionals. The "pros" will inform the Radio audience of the intricacies of the ancient game. They will tell how to whale out 300-yard drives, sink 40-yard putts and virtually everything about the sport, save how to find lost golf balls.

A "Welcome Back to Chicago" reception was given to the Duncan sisters, Topsy and Eva, on Monday noon, June 29, at Westinghouse Station KYW, at which time they made their greetings to the Radio fans with whom they became endeared during their daily broadcasts over KYW on their last Chicago engagement.

KSD is broadcasting from the Garden theater each Tuesday night beginning at 8 o'clock, Central time, and sends out the entire performance, music and dialogue, each time. A special broadcasting "hut" has been erected off stage at the theater for the apparatus and announcer, and in cases where the action is not accompanied by words a running description is given by the announcer at the same time the music is being broadcast.

Edwin Goldman, conductor of the famous Goldman Concert band, has made elaborate arrangements in order that the concerts may be broadcast from WEAF, New York, in the event of rain, which would otherwise prevent any concert or audience. After prevailing upon New York university, on whose campus the summer series of concerts is being given, Mr. Goldman secured consent to use the gymnasium building in case rain should fall.

### Restore Old Station 2LO for Use in Emergencies

LONDON.—The old transmitting apparatus of Station 2LO at Marconi house here, which was partially dismantled when the change over to the aerial on Selfridge's department store took place, has now been restored as a precautionary measure against any breakdown such as recently when the London station, thence went out of commission, depriving listeners in the metropolis of Radio entertainment.

### Remodel WKRC Studios

CINCINNATI.—Work has been started on the new WKRC studios of the Koda Radio corporation here. These will include orchestration, solo, lounge and reception rooms in the new \$5,000,000 Hotel Alms on Victory boulevard.

### Mystery Tenor Adds Soprano to Mask Act

NEW YORK.—"The Silver Masked Tenor," the mysterious soloist with the Silvertown Cord orchestra, will soon be assisted by a coloratura soprano. This artist is a newcomer, not only to the Radio audience, but also to Mr.—almost let the cat out of the bag that time—her father, who was introduced to her for the first time on June 23.

Although only seven pounds in weight, this little soprano possesses a voice so powerful that helpful neighbors suggested that the "silver mask" be used as a muffler to produce a "blessed golden silence." Everybody knows how temperamental these sopranos are, even at such a tender age.

The proud father from now on will be heard in "Everybody Loves My Baby, But My Baby Don't Love Nobody But Me," as a feature of the Silvertown programs from WEAF and the usual chain of stations.

### WWJ Uses New Transmitter

DETROIT.—WWJ, the Detroit News station, is now on the air with latest type Western Electric 1,000-watt transmitter. The News station, the pioneer newspaper broadcaster of the world, is rated as one of the best due largely to the very high class programs scheduled by E. L. Tyson, program director.

Natalie Brigham (below) becomes bride of G. C. Arnoux (right) after Radio romance. (Mrs. Arnoux photo by Shrader, Little Rock)



"HODOO thirteen" holds nothing but charms for G. C. Arnoux, director-announcer of the New Arlington hotel, Hot Springs, Ark. Station KTHS. December 13, last year, was the date KTHS took the air in its initial unannounced official test. The test was highly successful on the air and in other ways. The principal performing artist, Miss Natalie Adeline Brigham, violinist, was a visitor from Wauwatosa, Wis. She enjoyed the distinction of sending out the

### PLAYS SAXO'S WAIL FROM GLOOMY JAIL

MINNEAPOLIS, Minn.—While Paul Biese, famous Victor artist, was booked to appear at WAMD here, he had to go to jail for not paying his wife something like \$8,000 back alimony. The management of the station overcame the difficulty by running remote control lines to Biese's cell in the Ramsay county jail and at the appointed hour Paul played "Sobbing Blues" on the saxophone so as not to disappoint fans.

### NEW DIRECTOR



## WEAF OPERA MAKES BIG BROADCAST HIT

### 'WORTHY OF FINEST OPERA HOUSE' WRITE FANS

Seven Station Chain to Air "Norma" Pronounced Ideal for Radio Use

NEW YORK.—Music lovers of the audience of WEAF have written to say that they consider the productions of the WEAF Grand Opera company worthy of the finest opera house, and that these weekly tabloid versions fill the long-felt void which usually occurs during the summer between the regular operatic seasons.

After hearing their presentation of "Samson and Delilah" on a friend's Radio set, a celebrated music critic and composer enthusiastically telephoned WEAF that he never realized musical features of such high quality were "on the air."

Seven Station Hook-up  
On Tuesday evening, July 21, at 10 p. m., Eastern daylight saving time, Mr. Cesare Sodero, who has been so successful in conducting the previous presentations, will direct "Norma" in the studio of WEAF. Besides the New York station, WEEL, Boston, Mass., WFL, Philadelphia, Pa., WCAB, Pittsburgh, Pa., WGR, Buffalo, N. Y., WWJ, Detroit, Mich., and WCCO, St. Paul-Minneapolis, Minn., will broadcast it.

Features Clear Simplicity  
Those who weary of the declamatory modern opera in which the music is constantly changing in agreement with the most swift and subtle moods that emotion throws upon the stage, at the expense of clearly defined melody, will have no quarrel with the simplicity of Bellini's opera, "Norma." The technique of the work is that of the older Italian Opera School, in which airs and ensemble numbers, based on the simplest harmonic and melodic architecture, are plentiful enough. This does not mean, however, that emotional quality is absent, or even meager; and such numbers as "Casta Diva" or the duet in the final scene are remarkable for their sincerity of emotional expression, notwithstanding their clear simplicity of style.

### FIND STATION SILENT AND RECEIVE PRESENT

WHAS to Keep Air Busy on Third Birthday

LOUISVILLE, Ky.—In order to prove its right to the slogan, "The Snappiest Radiophone Station in the United States," WHAS here is offering a book of "Poster's Ten Best Songs" to all persons writing the station that they caught the station's microphone silent as long as four seconds during its third birthday program which takes place between 7:30 and 9 Saturday, July 18. Accidents on account of thunderstorms and unavoidable breakdowns are to be counted exceptions.

The book has been prepared especially for WHAS and any little slip in the program may mean the payment of several thousand books. However, the station officials are sure they can put the show over without a hitch and like all true Kentuckians are willing to take a chance.

### Governors' Conference First WCSH Broadcast

PORTLAND, Me.—A new broadcasting station entered the New England field when this city was first heard from on the air, on the occasion of the recent governors' conference here.

This station has the call letters WCSH and was erected by the Congress Square Hotel company. The CSH in the signal stands for the initials of the Congress Square hotel. A power of 500 watts and wave length of 256 meters are used.

Programs will be broadcast under the direction of William Foss, former power house superintendent and a well-known Radio engineer.

### Old Zion Outfit Now Heard from New Milwaukee Plant

MILWAUKEE.—Using the set operated at Zion, Ill., before WCOB installed their new 5,000-watt outfit, WSOE, the School of Engineering-Wisconsin News station opened its dedicatory program July 7 with a seven-hour program. Many novelties were introduced on the inaugural program and a group of leading Milwaukeeans was present to greet the artists.

Two studios are maintained by WSOE, both being Celotex sound proofed and having heavy plate glass windows to enable visitors to look into the studios from the main reception room. Heavy rugs, artistic floor lamps and draperies add to the attractiveness of both studios.

### New Stations

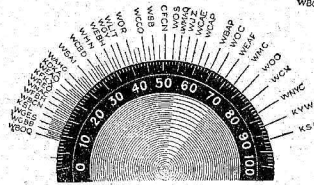
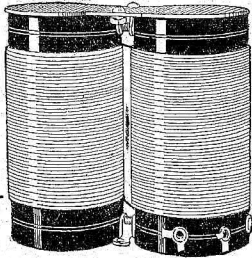
Fort Wayne, Ind., is to have a 500-watt class "A" station using the call WOWO. This station, owned by the Main Auto Supply company, will operate on 227 meters. Other stations licensed last week are: WABC, Asheville, N. C., 10 watts, 245 meters; WJBA, Joliet, Ill., 50 watts, 206.8 meters; WJBB, St. Petersburg, Fla., 10 watts, 206.8 meters; WIBR, Weirton, W. Va., 50 watts, 246 meters; WIBQ, Parina, Ill., 5 watts, 205.4 meters.

### Acting Secretary at WHT

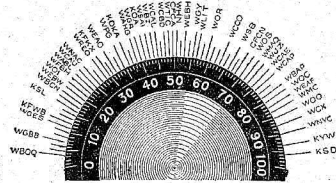
CHICAGO.—Judge Stephen B. Davis, acting secretary of commerce in the absence of Secretary Hoover, visited the WHT studio here recently and was driven to the transmission plant at Deerfield, Ill., by George E. Carlson, general manager of WHT, and H. J. Bligh, commercial manager of the toll station.

Before leaving the WHT studio he commented on the beauty of the Wrigley building studio and classed it as one of the most beautiful studios he had ever visited. Judge Davis also was impressed with the transmission cottage of WHT.

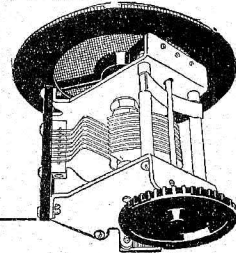
Grebe Binocular Coils prevent local interference and thus give that "selective sensitivity" which means maximum pleasure in reception.



Usual Dial  
Low-wave stations crowded onto lower dial numbers



Grebe Dial on S-L-F Condenser  
All stations have equal spacing around the dial, making tuning easy and quick.



## Get the Station You Want —shut out the rest

THE KEYNOTE of radio enjoyment is "selective sensitivity" —to get the desired station clear, as loud as pleases you, and free from those undertones from other stations which are so annoying.

It is for this sort of reception that the Synchronphase has won such signal favor everywhere. Exclusive Grebe features —*Binocular Coils, S-L-F Condensers, Volume Control*— are responsible.

And this power of selectivity is enduring because of the accurate construction of every part.

*Ask your dealer to prove to you how selective the Synchronphase is*

A. H. Grebe & Co., Inc., Van Wyck Blvd., Richmond Hill, N. Y.  
New York Office: Steinway Hall, 109 West 57th Street  
Western Branch: 443 So. San Pedro Street, Los Angeles, Cal.

# THE GREBE SYNCHROPHASE

TRADE MARK  
Reg. U. S. Pat. Off.

This company owns and operates stations WAHG and WBOQ; also marine and mobile low-wave re-broadcasting stations.

All Grebe apparatus is covered by patents granted and pending.

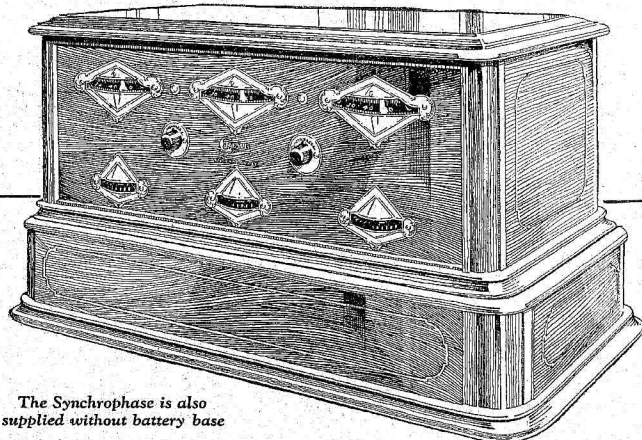


TRADE MARK  
Reg. U. S. Pat. Off.



Only that will endure which has within itself sound construction.

*Doctor H. Grebe*



The Synchronphase is also supplied without battery base



# KFRU, the "Voice of Oklahoma"



Jimmie Wilson's famous KFRU Catfish String band. This is one of the most popular KFRU features and the boys draw a huge flood of letters and applause with each program.



Above, E. O. Booth, general manager of the Etherical Radio company, owners of KFRU.

The man with the long beard and the two-bit mouth organ is Uncle Tom Marris, one of the best known harmonica players in the country.

The man at the organ manual is F. J. Craker, musical director of KFRU. He is also staff organist and accompanist.

VERY few people outside of the state had ever heard of Bristow, Oklahoma, until KFRU broke through the ether one night last winter. Since then this little city of 10,000 is heard from nightly by those who make the trip around the dial. Since its twelve-hour inaugural program on January 16, 1925, this station has never missed a schedule, and but twice has been more than five minutes late, unless due to weather conditions. Unlike the majority of the stations which are located in large cities, KFRU finds it necessary to transport talent from all over the state and often from even longer distances.

"The Voice of Oklahoma" has an executive staff of only four people. Roy C. Griffin, known to the Radio world as the "Oklahoma Pepperbird," manager and director, is the man responsible for the popular programs and policy of the station. Mr. Griffin was in newspaper work in Texas and chamber of commerce work in Oklahoma prior to going into the Radio field. His training along these lines has given him the vision, the acquaintance, the experience, and the psychology so necessary in the construction of original and worth-while programs.

Frank S. Lane is the regular announcer and his clear, distinct, well-modulated voice has helped win for him and KFRU one of the largest Radio audiences in America. Mr. Lane's training was for the theatrical profession and stands him in good stead with the "mike." Lane is only twenty, but has the judgment and tact of a natural born announcer.

E. E. Sams, chief operator, is a Radio engineer with years of training in this country and one year abroad.

Miss Ruth Wright, secretary to the Pepperbird and station hostess, fills a responsible position with "The Voice of Oklahoma." It is her job to greet the visiting artists and extend to them the hospitality and conveniences of the station on behalf of the Etherical Radio company. She also prepares the stock market schedules and lays out the news and police items, and the general run of daylight service programs. These four are known to the Radio world (Continued on page 6)



Above is Frank S. Lane, announcer at KFRU. He is a great believer in brevity in announcing.



Above is Marie Nichols, soprano. She is a frequent and well-liked entertainer at KFRU.



Above is Roy (High-grade) Cunningham, one of Oklahoma's favorite baritones and a regular artist at KFRU.



To right, below, Roy C. Griffin, manager of Station KFRU and the "Oklahoma Pepperbird."





## HOPE TO BROADCAST LEAGUE OF NATIONS

BELIEVE COMMITTEE WILL ACCEPT NEW PROPOSAL

European Stations All Favor Proposed Plan as Means of Stirring Popular Interest

GENEVA.—The whole of Europe may be able to listen in on the proceedings of the League of Nations next fall, if the committee accepts the offers that have been made by nearly all of the leading stations to put themselves at the disposal of that body. The station of the Postes, Telegraphes, et Telephones and the Eiffel Tower station in Paris, the Bresian, Frankfurt, and Munich stations in Germany, the stations in Rome and in Vienna have all offered to broadcast to their millions of listeners all interesting speeches and items which may come up.

As announced some weeks ago, there will be an international exposition of Radio telephony and telegraphy at Geneva at the same time as the fall meeting of the league. It will open on September 23 and close on October 4. An authorization has already been obtained from the secretary of the league to transmit the proceedings of the assembly throughout the exposition by means of powerful loud speakers.

## SEND POWER BY RADIO

(Continued from page 2)

On the other hand, if a tremble is imparted to several oranges at one side, the tremor or "wriggle," will be passed onward to those adjoining, and so on across the lake. At no time, however, will any orange be in any position other than it was before the tremor. That is the equivalent to the vibration transmission of Signor Midal.

One important point, of utmost importance to the engineering world, and one which is most desirable, is found in another paragraph of the statement: "I do not use high tension (voltage) . . . no difference of potential (voltage) is noticeable between the aerial and the earth, not even by using highly sensitive electromagnetic, electro-dynamical or electrostatic instruments."

Heretofore all radiation of energy for Radio communication has been accomplished by means of very high voltages that really force the energy off the antenna and ground connection. It is only natural that this could not be measured or shown because one is no longer concerned with electrical pressures, as such, but now must needs measure "light pressure" or "ultra light" pressures, if such they might be called. That there must be pressure of some sort, stands to reason.

### Power Radiation Is Found

The system has much of the qualities of light about it as is evidenced by another part of the report, "the electrical vibrations created by the transmitting system travel in a straight line toward an ideal 'focus' according to the directions imparted them by the systems of condensers which form the aerial; they converge in a point X in which the ideal lines of the aerial condensers of the receiving system converge. When this condition is not fulfilled, transmission cannot initiate."

This would suggest that the aerial units are placed in a semicircle or parabola and must all be pointed toward the spot at which power is desired. At the receiving end, an equal number of antenna units with directional qualities must be pointed exactly at the transmitting units, yet converging on a central collecting agency. This is much as if we had three cannon on a semicircle all pointing at one spot and, to collect the missiles fired, we set up three large tubes at the receiving end, one pointing squarely at each cannon. If all three cannon are fired simultaneously, the three projectiles will come together and enter the tubes at one spot.

### Energy Receiver May Move About

Once transmission has been started or set off, the positions of the aerials, and even of the transmitter and receiver in relation to each other, does not matter. So says Midal. If this be true the project permits of power transmission from a central station to moving trains, boats, automobiles, airplanes and submarines.

The ultimate dream of scientists will have been reached. No more will electric cars and locomotives be bothered with the cumbersome trolley wires or third rails. Ships at sea, submarines and even airplanes and dirigibles will obtain their motive power from a central Radio power station. Individuals may perhaps fly about in small, heavier-than-air machines or balloons, obtaining their power from the same station.

The dream may be carried far into the realm of seeming impossibility, but still all these things will come true, providing Midal has, as reports would indicate, solved the mystery of directed Radio energy transmission without losses.

## VIOLIN GIFT TO BOY WHO AMUSED HIM

NEW YORK.—Murray Lindy, violinist who plays at WHN every Friday evening tells a very interesting story. When thirteen, he played on a concert tour, in England. After a recital he received a note asking him to call at a certain address. Arriving there, he was met by a very old man who had heard him play and had invited him to his home to play for him. He brought forth a violin, requesting Lindy to try it. The first stroke told him he was fondling a prized instrument. For the three full hours he played, the old man never moved a muscle. Fatigued, the boy sat down, and started to examine this violin, the likes of which he had never heard. As Lindy now expresses it—he fell in love with it, and the old man presented it to him.

Various experts have appraised it since—and they concur that it is a genuine Del Jesu Guarnerius, with the date 1672 still evident. It is valued at upwards of \$15,000.

## "VOICE OF OKLAHOMA"

(Continued from page 5)

as the "Ether Family." The station, a 500-watt Western Electric, shares time on a wave length of 394.5 meters with Station WOAI at San Antonio, Texas.

It is now a national pastime to go fishing with KFUR and the Wilson Catfish band every Tuesday evening at 10:30.

Another original idea from this station is the Blue Monday or Washday programs presented every Monday, at which time Mrs. Ted Mascho and Mr. "Higrade" Cunningham entertain with baritone, soprano, piano and vocal duets. Mr. Paul Craker, staff organist, presents a concert every Thursday evening at 10:30 and a 6:00 a. m. breakfast program on Sundays and Tuesdays.

KFUR has its own orchestra of eight pieces, which entertains during daylight and after midnight, as the station policy is against too much jazz music on the main evening programs. The station has one remote control studio at A. & M. college at Stillwater, a distance of 100 miles, which it uses every Monday night. In addition to this remote control studio,

they are equipped with a portable, presenting remote control programs at distances ranging from 50 to 300 miles.

The Etherical Radio company owns and operates this station. E. H. Rolleston of Bristow, Oklahoma, a prominent young millionaire of the state, is president of the company, and R. O. Booth is general manager.

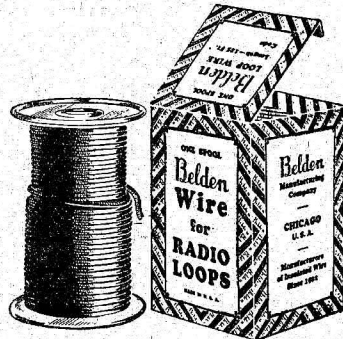
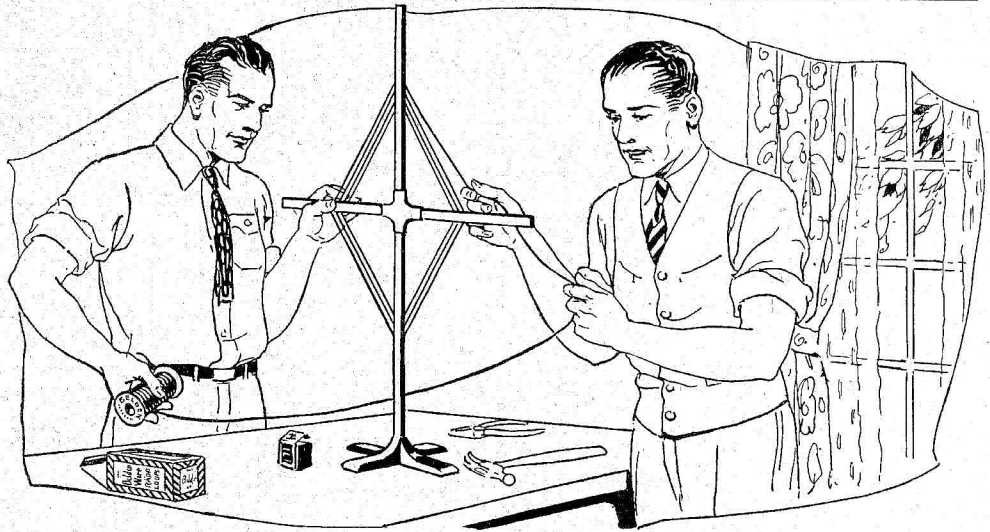
## NEW WSB HAS OPENING

(Continued from page 1)

Jubilant. The broadcast was a marathon affair starting at noon and riding the air until far into the next morning.

Although on the Atlanta Biltmore hotel, the Atlanta Journal still holds total ownership and control of the station. No change or modification of the policy, atmosphere, or traditions identified with WSB will be considered, according to Labdin Kay, veteran director and announcer.

It is far better to clamp a long soldering lug to a fixed condenser by means of a short brass machine screw and nut than to solder directly to any part of the condenser.



**BELDEN LOOP WIRE** is made in two types:  
60 strands of No. 38 Copper Wire and 5 strands No. 36 specially treated copper wire to prevent sag. Insulated with two layers of cotton, 125 feet per spool.

60 strands of No. 38 Copper Wire and 5 strands No. 36 specially treated copper wire to prevent sag. Insulated with cotton and covered with artificial silk braid, 125 feet per spool.



**BELDENAMEL AERIAL WIRE** is made in two types:  
7 strands of No. 22 Beldenamel Stranded or 16 strands of No. 28 Beldenamel Braided. Sold in cartons containing 100 ft. or 150 ft. coils.

Specify  
**Belden Wire**  
for Loops and Outdoor Aerials

Radio fans, who have built their own receiving sets, know the value of a good antenna, whether they use an indoor loop or an outdoor aerial.

For indoor loops, Belden Loop Wire assures maximum efficiency, because it is made of a large number of fine copper wires to reduce high-frequency losses. It is carefully insulated and does not sag or stretch.

For outdoor aerials, Beldenamel Aerial Wire outclasses all other types of aerial conductors. Its baked enamel coating on the stranded conductors provides protection against corrosion and insures a highly-efficient aerial that suffers no deterioration from smoke and fumes.

All radio set owners should use Belden Wire for maximum set efficiency. Ask your dealer about it, or send for our "Helpful Hints for Radio Fans."

**Belden Manufacturing Company**

Electrical Wire, Cable  
and Cordage

2310A So. Western Ave., Chicago

Manufacturers of Insulated Wire since 1902



## AGREE ON RADIO TILT SO MACMILLAN GOES

RADIO HISTORY MAKING  
STARTS IMMEDIATELY

Northern Lights Do Not Interfere with  
First Low Wave Transmission  
Tests

Explorer Macmillan is sailing northward, all is silent along the Potomac, and the Navy Department-Macmillan Radio tilt is a busted daily press sensation bubble. The expedition is carrying the equipment furnished by the naval authorities and is doing so because it wants to do so and not because it was forced to by Washington, according to word received by wire from Nova Scotia.

Radio history is in the making on the low wave lengths by the polar venturers. They have already held voice and voice communications from Nova Scotia with stations in New Orleans, New York and Florida. If the experiments continue successful a new language will be put on the air from the frozen wastes of the far North. This language will be Eskimaun, the speech of those who eat gum drops and live in ice houses.

### Will Broadcast Voice of Eskimo

More details of the expedition's Radio progress are told in a telegram sent by Commander E. F. McDonald, Jr., in charge of Radio on the expedition, which follows:

"We have started making Radio history last evening using voice repeat voice. Using forty meters, we talked with and were distinctly heard by Station 5NL, New Orleans, for twenty minutes. Then Station 2ACQ in Milton, N. Y., seventy miles from New York city on the Hudson, called us and said our voice volume was equal to WGY, Schenectady. Station VXB in Winter Park, Fla., called us stating had been listening to our voice for fifty minutes.

"I become more confident each day that we will put the voice of the Eskimo back to civilization. The northern lights, which will soon be south of us, were vivid last evening but did not interfere with transmission. By Radio we have our newspaper twice a day.

### Receives Navy Set

"The navy spark set, about which there has been so much commotion in the newspapers, arrived yesterday. Contrary to what was sent at our request merely for experimental purposes and will be set up when we reach Etah. We will probably find it will not work any more than the 130-meter set which we are taking along merely for the purpose of proving it will not work. The spark set is an old obsolete model of the Battleship Florida. After we get north of sixty-six latitude we will be unable to communicate with anything but forty and twenty meters.

"We are all happy and anxious to be on our way north down the Labrador, as they speak of going north in this vicinity."

## Eveready's Prepare Summer Schedules

Will Not Follow Regular Program  
Until the Fall

NEW YORK.—Although the Eveready group will not appear in its entirety during the Eveready Hour programs of July and August, individual members of this popular ensemble are appearing in solo numbers during the course of the orchestral programs every Tuesday by the Eveready chamber symphony orchestra, with Max Jacobs leading, or the Eveready Salon orchestra, Nathaniel Shilkret, leading.

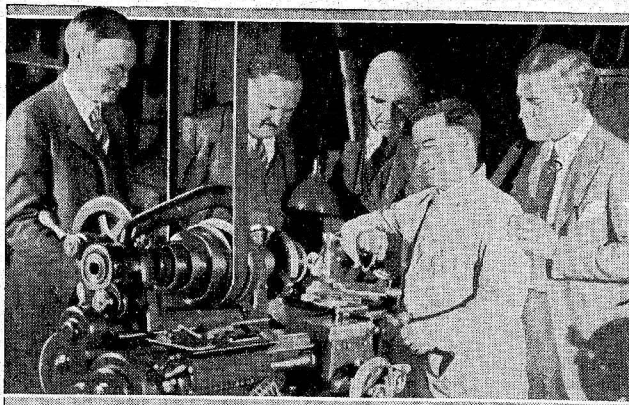
Prior to their reassembling as a group in the fall, the familiar Eveready artists will sing during the summer according to the following schedule:

July 21, Eveready Salon orchestra, Betsy Ayres and Wendell Hall; July 28, Eveready chamber symphony, Rose Bryant, Wilfred Glenn and Wendell Hall; August 4, Eveready Salon orchestra, Charles Harrison; August 11, Eveready chamber symphony, Wilfred Glenn; August 18, Eveready Salon orchestra, Eveready male quartet; August 25, Eveready chamber symphony, Rose Bryant and Betsy Ayres; September 1, Eveready chamber symphony, Eveready mixed quartet.

## Los Angeles Amateur Show Breaks Attendance Record

LOS ANGELES.—For the first time in Radio history, a strictly amateur Radio show and contest was recently held in Los Angeles, in the large auditorium of the National Automobile & Electrical School. Interest in the show and exhibits were very great, and practically every Radio fan in southern California attended, as is evidenced by the attendance records, which have broken all Radio show records on the Pacific coast. Primarily, the purpose of the show was to foster the interests of the man "who builds his own."

## HE HAS NOT LOST HIS OLD SKILL



Twenty years ago, Schwab, the steel king, discovered John Finnegan (in jumpers) at the lathe and put him in concert work. Now the famous tenor of WABG is proving to A. H. Grebe, president of A. H. Grebe & Co., Inc., Douglas Higney, Burr McIntosh and Thornton Fisher that singing has not impaired his old mechanical skill.

A miniature 6-volt lamp placed in parallel in the A battery circuit and set just behind a bezel hole will advise at all times whether the tubes are lit and warns one not to go to bed leaving the set drawing current.

## YOUR LARYNX GONE? JUST BUY ANOTHER!

TELEPHONE MEN INVENT A  
NEW SPEECH RESTORER

Sergius P. Grace Demonstrates Remarkable Instrument at Station  
WCX, Detroit

DETROIT.—If your larynx has been removed by an operation or in some manner been put out of commission, there's no need to worry longer. You'll soon be able to buy a ready made one that will work almost as well as the one you had.

That this is now possible was recently demonstrated by Sergius P. Grace, commercial development engineer of the Bell Telephone company at Station WCX here. Using a bellows instead of lungs as a person deprived of the larynx would, Grace spoke words and phrases through the mechanical device.

The artificial larynx was invented in the Bell laboratories as a result of a consultation with a physician who stated that while removal of the organ saved lives, it deprived the patient of voice. He asked if the Bell engineers could not do something to give voices to these unfortunates.

While the tone of the artificial larynx is not particularly pleasing it is understandable, and according to Grace, of sufficient utility so that the average voiceless person will overlook minor flaws in favor of its greater good points.

Which door  
will you open?

DAY-FAN is a house with a hundred doors. Each different Radio station sends you its music, through a certain one of those doors.

With other Radio sets you must run from door to door, wondering through which one your music will arrive.

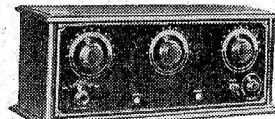
Day-Fan tells you in advance that the Drake Hotel always comes through door 40, that the Chicago Daily News always comes through door 31, that the St. Louis Post-Dispatch always comes through door 84.

The doors—which are the numbers on the dial—are always the same, for all Day-Fans, everywhere. So we give you their numbers in the Day-Fan Air Telephone Directory. No other set made can do this. Radio people call it "pre-logging." You will call it making Radio easy to enjoy.

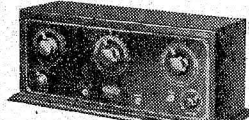
When you want a station just open its proper door (by turning the dial to that number) and the music, the speech, the song, floods in. Marvelous—but all Day-Fan owners take it for granted.

Turn out the lights and listen in the dark. The announcer opens the door of your room and speaks to you in the chair. The speaker lays his arm on your mantelpiece and talks to you from across the room. The violinist plays to you from the corner, and the dance orchestra syncopates from outside in your hall. This is no Radio! This is the song, the story, at your very side, loud or soft as you desire.

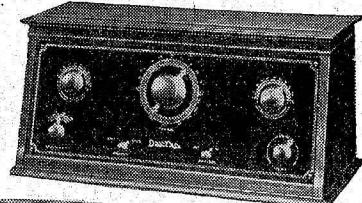
Go hear a Day-Fan today and prove these things to yourself right away. If you do not know who is your nearest Day-Fan dealer, drop us a line and we will tell you.



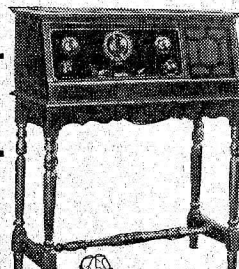
OEM 12, 4 TUBE, \$75.00



OEM 7, 4 TUBE, \$98.00



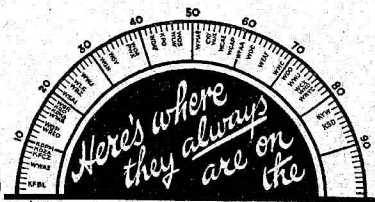
DAY-FAN 5, 5 TUBE, \$115.00



DAY CRAFT  
5 TUBE  
\$145.00

With Legs  
\$165.00

Legs Separate, \$20.00



# Day-Fan

RADIO  
Dial



THE DAYTON FAN & MOTOR COMPANY  
Dayton, Ohio  
For 36 Years Manufacturers of High Grade  
Electrical Apparatus



# FAMOUS EUROPEAN SINGER AT KYW

### Saturday, July 18

Saturday, silent night for: CNRT, KFAB, KFDM, KFUD, KFVA, KGLS, KIX, KOA, WRAP, WBAV, WBEZ, WCAU, WCEB, WCFB, WDFW, WDFW, WELI, WEEI, WFL, WHAD, WHAZ, WHN, WHW, WJLA, WKAB, WLIT, WMAK, WMAN, WMO, WSUI, WVIC, WYLA.

### Atlantic or Eastern Daylight Saving Time Stations

**CKAC**, Montreal, Can. (410), 7 p. m., talks on hygiene in French and English; 7:30, Windsor hotel concert orchestra; 8:30, studio entertainment.

**CNRD**, Ottawa, Can. (415), 8 p. m., Chateau Laurier concert orchestra; 9, address; National male quartet; CNRO Hawaiian orchestra; William Nixon, tenor; Violet Peterson, soprano; Ernest Williams, baritone; Nison and Rutledge; Chateau Laurier dance orchestra.

**WBFR**, New York, N. Y. (427.5), 8 p. m., Dr. Hans Hanz, violinist; 8:15, Fred Twarosch, tenor; 8:20, Bill questions; 8:30, Fred Twarosch, tenor; 8:30, Dr. Hans Hanz, violinist.

**WCAB**, Pittsburgh, Pa. (461.3), 3 p. m., Loeu's Aldine theater; 4, La Paradise orchestra; 6:30, William Penn state dinner concert; 8:30, studio concert.

**WEAF**, New York, N. Y. (491.5), 7-9 p. m., Gene Ingraham's Great North Inn orchestra; 6-7, dinner music; Waiters' orchestra; Emeraude Williams, baritone; Paul Panizza, pianist; James A. N. Caruso, violinist; Mrs. Frank Southard, pianist-reader; 8:15-8:45, Hayler; 8:45-9, Fennell; 9-9:15, concert; U. S. Marine band, direction of Captain William Santelmann; 10:15-10:30, Harold F. Noble, tenor; 10:30-11, humorist; 11:12, Vincent Gomez, Hotel Pennsylvania orchestra.

**WGBS**, New York, N. Y. (435.6), 6-8:30 p. m., Uncle Geobee; 6:30-7, The Benoniens; 7-7:10, sports talk; John Regan; 7:10-7:30, The Benoniens; 7:30-7:45, Anna Bennett, violin; 7:45-8, Harry D. Baker, tenor; Randall Hargreaves, pianist; 8-8:15, Daniel Fox, soprano; 8:20-8:35, Juan Pello, Spanish orchestra; 8:30-10:35, Crotona.

**WGR**, Buffalo, N. Y. (319), 2:30-4:30 p. m., WGR's afternoon program; 8:45-10:15, jointly with WFAF, U. S. Marine band.

**WHAR**, Atlantic City, N. J. (275), 7:30 p. m., address; 8, Sessile hotel orchestra; 8:15, Sessile hotel; 8:30, Sessile hotel; 8:45, Sessile hotel; 9, Sessile hotel; 9:15, Sessile hotel; 9:30, Sessile hotel; 9:45, Sessile hotel; 10, Sessile hotel; 10:15, Sessile hotel; 10:30, Sessile hotel; 10:45, Sessile hotel; 11, Sessile hotel; 11:15, Sessile hotel; 11:30, Sessile hotel; 11:45, Sessile hotel; 12, Sessile hotel.

### Headliners of the Week

**W**HAS WILL celebrate its birthday Saturday with a program of Kentucky music. Ten of the best songs written by Stephen C. Foster will be sung by the Courier-Journal quartet. Each of these songs will in turn be courteously radio-cast to some broadcasting station or Radio publication.

The evening hour program at WEAR this Sunday will be composed of popular classical selections. Cleveland artists of note are scheduled for this evening. At midnight a rollicking crew may be heard at WBBM, Chicago, when the Sunday Midnight Nut club takes the air.

Listeners for Miss Very Cool when the Gold Medal station, WCCO, gives the theatrical revue known as the "E. and R. Family" Monday night. Miss Very Cool has not revealed her identity, but her management of the ukulele has caused and will cause many fans to forget the heat. Another Monday attraction is Althea Tibbets, who has been the envy of New England birds. She will whistle again over the microphone of WBBZ.

The Tuesday programs of KSD are of the very best quality possible. Last week Margaret Anglin was heard in an old Greek drama. This week the fairy opera, "Hansel and Gretel," will be broadcast from the Garden theater in University city.

The vacation talk, "Through the White Mountains on Foot," by W. R. Williams will attract the hiker this same evening to WVIC.

Robert Hene, an operatic baritone, who has sung in nearly every European country, will appear Wednesday at KYW, Chicago. Lovers of opera will enjoy his French, Italian and English selections. WGY is putting on a unique program this same evening. The proceedings of a police court in Schenectady will be heard. Three traffic violation cases will be tried by a real city judge and police officials.

WIP and WPG will combine Thursday to broadcast the California Night Hawks. If you really want a good laugh hear these synecopation kings' sing, "Looking Through the Knot Hole in Father's Wooden Leg."

WMC, Memphis, will give a particularly fine program this same evening, directed by Henri Benner.

To be a pugilist or a Paganini has always been a question to Paul Ruzinsky. Battling Ruzinsky solved the problem by fighting battles in the prize ring to earn money for his violin lessons. The New York Philharmonic orchestra has recently added Mr. Ruzinsky to the violin section. This organization now claims the distinction of being the only symphonic body in the whole world having a successful prize fighter as a member. Mr. Ruzinsky will play his violin at WAHG Friday.

"Bill" Hay, the Scotch announcer formerly at KFKX, Hastings, will again be heard over the air. This time it will be at a reception given in his honor Friday at WLS.

### Sunday, July 19

Sunday, silent night for: CKAC, CNRT, KFAB, KFAD, KFVA, KGLS, KIX, KOA, WRAP, WBAV, WBEZ, WCAU, WCEB, WCFB, WDFW, WDFW, WELI, WEEI, WFL, WHAD, WHAZ, WHN, WHW, WJLA, WKAB, WLIT, WMAK, WMAN, WMO, WSUI, WVIC, WYLA.

### Atlantic or Eastern Daylight Saving Time Stations

**WBBR**, New York, N. Y. (427.6), 9 p. m., choral choir; 9:15, violin choir; 9:25, choral singers; 9:30, Bible lecture; Judge Rutherford; 10:10, choral singers; 10:15, violin choir; 10:20, choral singers.

**WCAE**, Pittsburgh, Pa. (461.3), 3 p. m., People's Radio choir services; 6:30, William Penn State dinner concert; 7:30, Roxy and his gang; 8:30, Goldman band; 8:45, Providence, R. I. (440.3), 10 p. m., Ethel and W. M. Venable serenaders; pipe organ recital; 8:45, WCAE's name, Capital Theater; 9:15-10:15, Goldman band concert; Edwin Franko Goldman, conductor; Lotia Madler, soprano.

**WEEI**, Boston, Mass. (476), 7:20 p. m., Roxy and his gang; 8:30, Goldman band concert.

**WFL**, Philadelphia, Pa. (339.5), 7:30 p. m., services; Arch Street Presbyterian church, Rev. William T. Rogers, D. D.; 9:15, Goldman band from WCAE.

**WGBS**, New York, N. Y. (435.6), 3:30-4:30 p. m., Pleadably theater program; 7:30-8:30, program, Steel Pier, N. Y.

**WGR**, Buffalo, N. Y. (319), 10:30 a. m., Central Presbyterian church service; 3 p. m., vesper service, Rev. Albert S. Keeler; 7:30 p. m., Lutheran church, speaker; WHAR, Atlantic City, N. J. (275), 3:30 p. m., Municipal services; St. James Episcopal church, Atlantic City; 7:45, services; Holy Trinity church; 10, features in conjunction with WCAE; Atlantic City; 10:15, WCAE; WJAR, Providence, R. I. (365.5), 7:30-8:15 p. m., Roxy and his gang; 9:15-10:15, WCAE; WJNY, New York, N. Y. (462.2), 8:15-9:15 p. m., Paul Ziegler, pianist.

**WJZ**, New York, N. Y. (454.3), 3:30-3:45 p. m., Miltona Beardsley, pianist; 8:30-9:10, Tom Daniel, bass; WKAQ, San Francisco, Cal. (340.7), 8-10 p. m., Municipal band concert.

**WLAB**, New York, N. Y. (340.7), 11-11:15 p. m., services, First Church of Christ Scientist; 7-7:35, Ernie Golden and his Hotel Madison orchestra.

**WNYG**, New York, N. Y. (420), 8 p. m., Brooklyn Mark Strand theater program, direction of Edward L. Ryan.

**WOO**, Philadelphia, Pa. (508.2), 10:30 a. m., services, Bethany temple; 2:30 p. m., Sunday school exercises; 6:30, 6:45, 6:50, 6:55, 7, 7:05, 7:10, 7:15, 7:20, 7:25, 7:30, 7:35, 7:40, 7:45, 7:50, 7:55, 8, 8:05, 8:10, 8:15, 8:20, 8:25, 8:30, 8:35, 8:40, 8:45, 8:50, 8:55, 9, 9:05, 9:10, 9:15, 9:20, 9:25, 9:30, 9:35, 9:40, 9:45, 9:50, 9:55, 10, 10:05, 10:10, 10:15, 10:20, 10:25, 10:30, 10:35, 10:40, 10:45, 10:50, 10:55, 11, 11:05, 11:10, 11:15, 11:20, 11:25, 11:30, 11:35, 11:40, 11:45, 11:50, 11:55, 12, 12:05, 12:10, 12:15, 12:20, 12:25, 12:30, 12:35, 12:40, 12:45, 12:50, 12:55, 1, 1:05, 1:10, 1:15, 1:20, 1:25, 1:30, 1:35, 1:40, 1:45, 1:50, 1:55, 2, 2:05, 2:10, 2:15, 2:20, 2:25, 2:30, 2:35, 2:40, 2:45, 2:50, 2:55, 3, 3:05, 3:10, 3:15, 3:20, 3:25, 3:30, 3:35, 3:40, 3:45, 3:50, 3:55, 4, 4:05, 4:10, 4:15, 4:20, 4:25, 4:30, 4:35, 4:40, 4:45, 4:50, 4:55, 5, 5:05, 5:10, 5:15, 5:20, 5:25, 5:30, 5:35, 5:40, 5:45, 5:50, 5:55, 6, 6:05, 6:10, 6:15, 6:20, 6:25, 6:30, 6:35, 6:40, 6:45, 6:50, 6:55, 7, 7:05, 7:10, 7:15, 7:20, 7:25, 7:30, 7:35, 7:40, 7:45, 7:50, 7:55, 8, 8:05, 8:10, 8:15, 8:20, 8:25, 8:30, 8:35, 8:40, 8:45, 8:50, 8:55, 9, 9:05, 9:10, 9:15, 9:20, 9:25, 9:30, 9:35, 9:40, 9:45, 9:50, 9:55, 10, 10:05, 10:10, 10:15, 10:20, 10:25, 10:30, 10:35, 10:40, 10:45, 10:50, 10:55, 11, 11:05, 11:10, 11:15, 11:20, 11:25, 11:30, 11:35, 11:40, 11:45, 11:50, 11:55, 12, 12:05, 12:10, 12:15, 12:20, 12:25, 12:30, 12:35, 12:40, 12:45, 12:50, 12:55, 1, 1:05, 1:10, 1:15, 1:20, 1:25, 1:30, 1:35, 1:40, 1:45, 1:50, 1:55, 2, 2:05, 2:10, 2:15, 2:20, 2:25, 2:30, 2:35, 2:40, 2:45, 2:50, 2:55, 3, 3:05, 3:10, 3:15, 3:20, 3:25, 3:30, 3:35, 3:40, 3:45, 3:50, 3:55, 4, 4:05, 4:10, 4:15, 4:20, 4:25, 4:30, 4:35, 4:40, 4:45, 4:50, 4:55, 5, 5:05, 5:10, 5:15, 5:20, 5:25, 5:30, 5:35, 5:40, 5:45, 5:50, 5:55, 6, 6:05, 6:10, 6:15, 6:20, 6:25, 6:30, 6:35, 6:40, 6:45, 6:50, 6:55, 7, 7:05, 7:10, 7:15, 7:20, 7:25, 7:30, 7:35, 7:40, 7:45, 7:50, 7:55, 8, 8:05, 8:10, 8:15, 8:20, 8:25, 8:30, 8:35, 8:40, 8:45, 8:50, 8:55, 9, 9:05, 9:10, 9:15, 9:20, 9:25, 9:30, 9:35, 9:40, 9:45, 9:50, 9:55, 10, 10:05, 10:10, 10:15, 10:20, 10:25, 10:30, 10:35, 10:40, 10:45, 10:50, 10:55, 11, 11:05, 11:10, 11:15, 11:20, 11:25, 11:30, 11:35, 11:40, 11:45, 11:50, 11:55, 12, 12:05, 12:10, 12:15, 12:20, 12:25, 12:30, 12:35, 12:40, 12:45, 12:50, 12:55, 1, 1:05, 1:10, 1:15, 1:20, 1:25, 1:30, 1:35, 1:40, 1:45, 1:50, 1:55, 2, 2:05, 2:10, 2:15, 2:20, 2:25, 2:30, 2:35, 2:40, 2:45, 2:50, 2:55, 3, 3:05, 3:10, 3:15, 3:20, 3:25, 3:30, 3:35, 3:40, 3:45, 3:50, 3:55, 4, 4:05, 4:10, 4:15, 4:20, 4:25, 4:30, 4:35, 4:40, 4:45, 4:50, 4:55, 5, 5:05, 5:10, 5:15, 5:20, 5:25, 5:30, 5:35, 5:40, 5:45, 5:50, 5:55, 6, 6:05, 6:10, 6:15, 6:20, 6:25, 6:30, 6:35, 6:40, 6:45, 6:50, 6:55, 7, 7:05, 7:10, 7:15, 7:20, 7:25, 7:30, 7:35, 7:40, 7:45, 7:50, 7:55, 8, 8:05, 8:10, 8:15, 8:20, 8:25, 8:30, 8:35, 8:40, 8:45, 8:50, 8:55, 9, 9:05, 9:10, 9:15, 9:20, 9:25, 9:30, 9:35, 9:40, 9:45, 9:50, 9:55, 10, 10:05, 10:10, 10:15, 10:20, 10:25, 10:30, 10:35, 10:40, 10:45, 10:50, 10:55, 11, 11:05, 11:10, 11:15, 11:20, 11:25, 11:30, 11:35, 11:40, 11:45, 11:50, 11:55, 12, 12:05, 12:10, 12:15, 12:20, 12:25, 12:30, 12:35, 12:40, 12:45, 12:50, 12:55, 1, 1:05, 1:10, 1:15, 1:20, 1:25, 1:30, 1:35, 1:40, 1:45, 1:50, 1:55, 2, 2:05, 2:10, 2:15, 2:20, 2:25, 2:30, 2:35, 2:40, 2:45, 2:50, 2:55, 3, 3:05, 3:10, 3:15, 3:20, 3:25, 3:30, 3:35, 3:40, 3:45, 3:50, 3:55, 4, 4:05, 4:10, 4:15, 4:20, 4:25, 4:30, 4:35, 4:40, 4:45, 4:50, 4:55, 5, 5:05, 5:10, 5:15, 5:20, 5:25, 5:30, 5:35, 5:40, 5:45, 5:50, 5:55, 6, 6:05, 6:10, 6:15, 6:20, 6:25, 6:30, 6:35, 6:40, 6:45, 6:50, 6:55, 7, 7:05, 7:10, 7:15, 7:20, 7:25, 7:30, 7:35, 7:40, 7:45, 7:50, 7:55, 8, 8:05, 8:10, 8:15, 8:20, 8:25, 8:30, 8:35, 8:40, 8:45, 8:50, 8:55, 9, 9:05, 9:10, 9:15, 9:20, 9:25, 9:30, 9:35, 9:40, 9:45, 9:50, 9:55, 10, 10:05, 10:10, 10:15, 10:20, 10:25, 10:30, 10:35, 10:40, 10:45, 10:50, 10:55, 11, 11:05, 11:10, 11:15, 11:20, 11:25, 11:30, 11:35, 11:40, 11:45, 11:50, 11:55, 12, 12:05, 12:10, 12:15, 12:20, 12:25, 12:30, 12:35, 12:40, 12:45, 12:50, 12:55, 1, 1:05, 1:10, 1:15, 1:20, 1:25, 1:30, 1:35, 1:40, 1:45, 1:50, 1:55, 2, 2:05, 2:10, 2:15, 2:20, 2:25, 2:30, 2:35, 2:40, 2:45, 2:50, 2:55, 3, 3:05, 3:10, 3:15, 3:20, 3:25, 3:30, 3:35, 3:40, 3:45, 3:50, 3:55, 4, 4:05, 4:10, 4:15, 4:20, 4:25, 4:30, 4:35, 4:40, 4:45, 4:50, 4:55, 5, 5:05, 5:10, 5:15, 5:20, 5:25, 5:30, 5:35, 5:40, 5:45, 5:50, 5:55, 6, 6:05, 6:10, 6:15, 6:20, 6:25, 6:30, 6:35, 6:40, 6:45, 6:50, 6:55, 7, 7:05, 7:10, 7:15, 7:20, 7:25, 7:30, 7:35, 7:40, 7:45, 7:50, 7:55, 8, 8:05, 8:10, 8:15, 8:20, 8:25, 8:30, 8:35, 8:40, 8:45, 8:50, 8:55, 9, 9:05, 9:10, 9:15, 9:20, 9:25, 9:30, 9:35, 9:40, 9:45, 9:50, 9:55, 10, 10:05, 10:10, 10:15, 10:20, 10:25, 10:30, 10:35, 10:40, 10:45, 10:50, 10:55, 11, 11:05, 11:10, 11:15, 11:20, 11:25, 11:30, 11:35, 11:40, 11:45, 11:50, 11:55, 12, 12:05, 12:10, 12:15, 12:20, 12:25, 12:30, 12:35, 12:40, 12:45, 12:50, 12:55, 1, 1:05, 1:10, 1:15, 1:20, 1:25, 1:30, 1:35, 1:40, 1:45, 1:50, 1:55, 2, 2:05, 2:10, 2:15, 2:20, 2:25, 2:30, 2:35, 2:40, 2:45, 2:50, 2:55, 3, 3:05, 3:10, 3:15, 3:20, 3:25, 3:30, 3:35, 3:40, 3:45, 3:50, 3:55, 4, 4:05, 4:10, 4:15, 4:20, 4:25, 4:30, 4:35, 4:40, 4:45, 4:50, 4:55, 5, 5:05, 5:10, 5:15, 5:20, 5:25, 5:30, 5:35, 5:40, 5:45, 5:50, 5:55, 6, 6:05, 6:10, 6:15, 6:20, 6:25, 6:30, 6:35, 6:40, 6:45, 6:50, 6:55, 7, 7:05, 7:10, 7:15, 7:20, 7:25, 7:30, 7:35, 7:40, 7:45, 7:50, 7:55, 8, 8:05, 8:10, 8:15, 8:20, 8:25, 8:30, 8:35, 8:40, 8:45, 8:50, 8:55, 9, 9:05, 9:10, 9:15, 9:20, 9:25, 9:30, 9:35, 9:40, 9:45, 9:50, 9:55, 10, 10:05, 10:10, 10:15, 10:20, 10:25, 10:30, 10:35, 10:40, 10:45, 10:50, 10:55, 11, 11:05, 11:10, 11:15, 11:20, 11:25, 11:30, 11:35, 11:40, 11:45, 11:50, 11:55, 12, 12:05, 12:10, 12:15, 12:20, 12:25, 12:30, 12:35, 12:40, 12:45, 12:50, 12:55, 1, 1:05, 1:10, 1:15, 1:20, 1:25, 1:30, 1:35, 1:40, 1:45, 1:50, 1:55, 2, 2:05, 2:10, 2:15, 2:20, 2:25, 2:30, 2:35, 2:40, 2:45, 2:50, 2:55, 3, 3:05, 3:10, 3:15, 3:20, 3:25, 3:30, 3:35, 3:40, 3:45, 3:50, 3:55, 4, 4:05, 4:10, 4:15, 4:20, 4:25, 4:30, 4:35, 4:40, 4:45, 4:50, 4:55, 5, 5:05, 5:10, 5:15, 5:20, 5:25, 5:30, 5:35, 5:40, 5:45, 5:50, 5:55, 6, 6:05, 6:10, 6:15, 6:20, 6:25, 6:30, 6:35, 6:40, 6:45, 6:50, 6:55, 7, 7:05, 7:10, 7:15, 7:20, 7:25, 7:30, 7:35, 7:40, 7:45, 7:50, 7:55, 8, 8:05, 8:10, 8:15, 8:20, 8:25, 8:30, 8:35, 8:40, 8:45, 8:50, 8:55, 9, 9:05, 9:10, 9:15, 9:20, 9:25, 9:30, 9:35, 9:40, 9:45, 9:50, 9:55, 10, 10:05, 10:10, 10:15, 10:20, 10:25, 10:30, 10:35, 10:40, 10:45, 10:50, 10:55, 11, 11:05, 11:10, 11:15, 11:20, 11:25, 11:30, 11:35, 11:40, 11:45, 11:50, 11:55, 12, 12:05, 12:10, 12:15, 12:20, 12:25, 12:30, 12:35, 12:40, 12:45, 12:50, 12:55, 1, 1:05, 1:10, 1:15, 1:20, 1:25, 1:30, 1:35, 1:40, 1:45, 1:50, 1:55, 2, 2:05, 2:10, 2:15, 2:20, 2:25, 2:30, 2:35, 2:40, 2:45, 2:50, 2:55, 3, 3:05, 3:10, 3:15, 3:20, 3:25, 3:30, 3:35, 3:40, 3:45, 3:50, 3:55, 4, 4:05, 4:10, 4:15, 4:20, 4:25, 4:30, 4:35, 4:40, 4:45, 4:50, 4:55, 5, 5:05, 5:10, 5:15, 5:20, 5:25, 5:30, 5:35, 5:40, 5:45, 5:50, 5:55, 6, 6:05, 6:10, 6:15, 6:20, 6:25, 6:30, 6:35, 6:40, 6:45, 6:50, 6:55, 7, 7:05, 7:10, 7:15, 7:20, 7:25, 7:30, 7:35, 7:40, 7:45, 7:50, 7:55, 8, 8:05, 8:10, 8:15, 8:20, 8:25, 8:30, 8:35, 8:40, 8:45, 8:50, 8:55, 9, 9:05, 9:10, 9:15, 9:20, 9:25, 9:30, 9:35, 9:40, 9:45, 9:50, 9:55, 10, 10:05, 10:10, 10:15, 10:20, 10:25, 10:30, 10:35, 10:40, 10:45, 10:50, 10:55, 11, 11:05, 11:10, 11:15, 11:20, 11:25, 11:30, 11:35, 11:40, 11:45, 11:50, 11:55, 12, 12:05, 12:10, 12:15, 12:20, 12:25, 12:30, 12:35, 12:40, 12:45, 12:50, 12:55, 1, 1:05, 1:10, 1:15, 1:20, 1:25, 1:30, 1:35, 1:40, 1:45, 1:50, 1:55, 2, 2:05, 2:10, 2:15, 2:20, 2:25, 2:30, 2:35, 2:40, 2:45, 2:50, 2:55, 3, 3:05, 3:10, 3:15, 3:20, 3:25, 3:30, 3:35, 3:40, 3:45, 3:50, 3:55, 4, 4:05, 4:10, 4:15, 4:20, 4:25, 4:30, 4:35, 4:40, 4:45, 4:50, 4:55, 5, 5:05, 5:10, 5:15, 5:20, 5:25, 5:30, 5:35, 5:40, 5:45, 5:50, 5:55, 6, 6:05, 6:10, 6:15, 6:20, 6:25, 6:30, 6:35, 6:40, 6:45, 6:50, 6:55, 7, 7:05, 7:10, 7:15, 7:20, 7:25, 7:30, 7:35, 7:40, 7:45, 7:50, 7:55, 8, 8:05, 8:10, 8:15, 8:20, 8:25, 8:30, 8:35, 8:40, 8:45, 8:50, 8:55, 9, 9:05, 9:10, 9:15, 9:20, 9:25, 9:30, 9:35, 9:40, 9:45, 9:50, 9:55, 10, 10:05, 10:10, 10:15, 10:20, 10:25, 10:30, 10:35, 10:40, 10:45, 10:50, 10:55, 11, 11:05, 11:10, 11:15, 11:20, 11:25, 11:30, 11:35, 11:40, 11:45, 11:50, 11:55, 12, 12:05, 12:10, 12:15, 12:20, 12:25, 12:30, 12:35, 12:40, 12:45, 12:50, 12:55, 1, 1:05, 1:10, 1:15, 1:20, 1:25, 1:30, 1:35, 1:40, 1:45, 1:50, 1:55, 2, 2:05, 2:10, 2:15, 2:20, 2:25, 2:30, 2:35, 2:40, 2:45, 2:50, 2:55, 3, 3:05, 3:10, 3:15, 3:20, 3:25, 3:30, 3:35, 3:40, 3:45, 3:50, 3:55, 4, 4:05, 4:10, 4:15, 4:20, 4:25, 4:30, 4:35, 4:40, 4:45, 4:50, 4:55, 5, 5:05, 5:10, 5:15, 5:20, 5:25, 5:30, 5:35, 5:40, 5:45, 5:50, 5:55, 6, 6:05, 6:10, 6:15, 6:20, 6:25, 6:30, 6:35, 6:40, 6:45, 6:50, 6:55, 7, 7:05, 7:10, 7:15, 7:20, 7:25, 7:30, 7:35, 7:40, 7:45, 7:50, 7:55, 8, 8:05, 8:10, 8:15, 8:20, 8:25, 8:30, 8:35, 8:40, 8:45, 8:50, 8:55, 9, 9:05, 9:10, 9:15, 9:20, 9:25, 9:30, 9:35, 9:40, 9:45, 9:50, 9:55, 10, 10:05, 10:10, 10:15, 10:20, 10:25, 10:30, 10:35, 10:40, 10:45, 10:50, 10:55, 11, 11:05, 11:10, 11:15, 11:20, 11:25, 11:30, 11:35, 11:40, 11:45, 11:50, 11:55, 12, 12:05, 12:10, 12:15, 12:20, 12:25, 12:3



WTIC GIVES FANS VACATION HINTS

Sunday, July 19

(Continued from page 8)

KFRU, Bristol, Okla. (394.5), 9:30 a. m., Sunday school; 11 a. m., service; 8:30 p. m., "Who Was Conquered—Rise Again from the Dead."
KFUU, St. Louis, Mo. (545.3), 8:15 p. m., "Who Was Conquered—Rise Again from the Dead."
KFVE, University City, Mo. (240), 7:30 p. m., Radio-gram review; 10:30 p. m., sacred song recital; Joan Arliss; organ selections; Wilbur H. Mocker.



Vera Barstow is ranked among the first ten violinists of the world. She is an exclusive KKK artist and may be heard Thursday evenings.

Methodist church; Belcanto male quartet; 9:30-11, Jack Gardner and his orchestra.
WHAAS, Louisville, Ky. (359.8), 10 a. m., Fourth Avenue Seventh Day Adventist church.
WHO, Des Moines, Iowa (520), 11 a. m., University church service; 7:30-8:30 p. m., Bankers Life trio.
WMC, Memphis, Tenn. (499.7), 11 a. m., services, Second Presbyterian church.
WDOAW, Omaha, Neb. (520), 9 a. m., chapel service, Holy R. B. Brown; 9, chapel service, Church of Jesus Christ of Latter Day Saints.
WCO, Davenport, Iowa (484), 8-8:30 p. m., Mt. Ida Syn. church; 9:30-11:30, Palmer Little school.
WOS, Jefferson City, Mo. (449.9), 8 p. m., union review services.
WSLU, Iowa City, Iowa (484), 9 p. m., familiar hymns, Edith Kelly.

Mountain Standard Time Stations
KFWA, Ogden, Utah (261), 8-11 p. m., musical program, Chamber of Commerce.
KOA, Denver, Colo. (322.4), 11 a. m., First Baptist church; 4 p. m., Oliver W. Gushko, organist; 7:45, First Baptist church.
Pacific Standard Time Stations
KFWB, Hollywood, Calif. (252), 9-11 p. m., late news and Warner Brothers' Sunday night movie frolic, screen personalities direct from the lot.
KGO, Oakland, Calif. (361.2), 11 a. m., First Congregational church; 7:45, First Congregational church.
KAW, Portland, Ore. (491.5), 10:30-12 noon, services, First Presbyterian church; Dr. Harold L. Bowman, pastor; 7:45-9 p. m., services, First Church of Christ, Scientist.
KNJ, Los Angeles, Calif. (405.2), 6-8:30 p. m., Leighton's Aracelo cafeteria orchestra, Jack Cronshaw, leader; 8:30-7, Art Ricksman's Elmore hotel concert orchestra; Edward Fitzpatrick, director; 9-9:29, Arthur Blakeley, organist; 8-10, program, Martin Music company, arranged by J. Howard Johnson, E.H.I. concert trio, Ruth Pitts, soprano; John Martin, pianist.
KNH, Hollywood, Calif. (336.9), 7-8 p. m., First Presbyterian church of Hollywood; 8-9, Ambassador hotel concert orchestra, Josef Rosenfield, director; 9-11, program, Beverly Hills Nurseries, Calmon Luboviski, concert violinist; Luboviski trio.
KPO, San Francisco, Calif. (428.3), 6:35-7:30 p. m., Palace hotel orchestra; 8-8:30, Palace hotel concert orchestra; 8:30-10, Rudy Seiger's Fairmont hotel orchestra.

Monday, July 20

Monday, silent night for: CKAC, CNRT, KFAE, KFMD, KEW, KJH, KLDL, KYW, PWX, WBAE, WBRM, WBOB, WCAU, WDFW, WCAQ, WEBB, WEBI, WFI, WGN, WBS, WBSG, WHAS, WIBO, WJOP, WJW, WGLS, WMAQ, WMBB, WOG, WOAI, WOJ, WRC, WRBO, WTV.
Atlantic or Eastern Daylight Saving Time Stations
CHNC, Toronto, Can. (356.7), 8:30 p. m., CHNC or-

Kathleen Ryan, contralto, is a member of the Chicago concert company. She will be heard Tuesday at WGN in both ensemble and solo work. Giuseppe De Luca, baritone, of the Metropolitan Opera company, will sing Monday at WEAF.

chestra; Jacques Stern, cellist; Campbell Weeks, violinist.
WAKR, Richmond Hill, N. Y. (315.6), 7:20-7:45 p. m., Joe Zimmerman, pianist; 7:45-7:55, sports talk, Thurston Fisher; 8:15-8:30, "Fifteen Minutes with Kipling"; Horace A. Taylor; 8:30-8:45, Genevieve Williams, soprano; 8:45-9, Joe Zimmerman; 9-9:30, Synchrophase string trio; 9:30-9:45, C. C. Jones, baritone; 9:45-10, Genevieve Williams; 10-10:30, Synchrophase string trio; 10:30-10:55, dance orchestra; 11:30-11:50, dance quartet.
WBBR, New York, N. Y. (272.6), 8 p. m., Irene Kleinpeter, soprano; 8:25, vocal duets, Irene Kleinpeter, Fred Franz; 8:55, "The Hand of God"; 8:50, Fred Franz, tenor.
WCAE, Pittsburgh, Pa. (461.3), 6:30 p. m., dinner concert, William Penn hotel; 8:30, concert; 11, Sanders Inn.
WEAF, New York, N. Y. (491.5), 4-4:10 p. m., Mildred Frazer, soprano; 4:10-4:20, Pearl Heards, pianist; 4:20-4:35, "Snatches" from Shakespeare, Milda Graetz; 4:35-4:50, Mildred Frazer; 4:50-5, Pearl Heards; 6-7, dinner music, Waldorf-Astoria; 7-7:15, talk, "The Story of the Library"; 7:15-8:30, program, Mark Strand theater and studio, direction of Joseph Plattner; 8:30-8:45, health talk, Metropolitan Little Institute company; 8:45-10:15, Goldham band concert; Edwina Franco Goldman, conductor; Waino Kauppi, concert soloist; 10:15-10:30, Giuseppe di Bonaiuto, tenor; 10:30-11:30, Hotel Bossert, Marjorie Reed, orchestra.
WEL, Boston, Mass. (476), 6 p. m., Jack Brown and his orchestra; 7:15, baseball; 7:30, musical; 8:30, health talk; 9, Ed Andrews and his Nautilus Garden orchestra; 10, Thermo Appliance company.
WFL, Philadelphia, Pa. (394.5), 3:30 p. m., poetry; J. Chaucer, Sheriff; 8:45, Bellevue Stratford roof garden trio.
WBSB, New York, N. Y. (315.8), 3-4 p. m., Y. M. C. A. program, direction of John R. Binham; 6-6:30, Uncle Geebee; 9:30-9:45, Al Goodhart, jazz piano.
WGR, Buffalo, N. Y. (319), 2:30-4:30 p. m., WGR's afternoon program; 6:30-7:30, Olympic dance orchestra; 9-9:30, "The Fivulous Hat Box"; E. J. Clare and Henry L. Porter; 9:30-10:30, recital, Ethel McMillen and associate artists; 11-11 a. m., supper-dance music, Vincent Loyce Hotel Stadler dance orchestra, Harold Gieser, director.
WHAR, Atlantic City, N. J. (275), 7:30 p. m., address, S. Seaside hotel trio; 9, Shebunna hotel concert orchestra.
WHN, New York, N. Y. (381.2), 7:30-8 p. m., Alvin and his WBN orchestra; 8-8:05, "Storage Batteries," H. B. Shontz; 8:05-8:35, Roseland dance orchestra; 11-11:30, organ recital, Loew's Lexington; 12-12:30 a. m., Harry Richmond and his Club Richmond Entertainers.

WIP, Philadelphia, Pa. (508.2), 3 p. m., "Songs of the Surf"; 3:30, Comfort's philanthropic orchestra; 6:05, Benjamin Franklin concert orchestra; 7, Uncle Wip's bedtime stories.
WJAR, Providence, R. I. (305.9), 8 p. m., musical.
WJZ, New York, N. Y. (454.2), 4:30-5:30 p. m., Fred Hall's Royal Theater orchestra; 5:30-6, daily reports; 7-7:30, Bernhard Levitov's Hotel Commodore dinner concert; 7:30-9, Columbian program; 10:45-11:45, Jacques Green and his Club Deauville orchestra.
WLIT, Philadelphia, Pa. (394.5), 4:30 p. m., talk, "The Healthy Baby"; E. L. Bauer; 7:30, Dream Daddy's bedtime stories; 9, Stanley theater hour; moving picture review, Joseph Nassau; 10, Arcadia cafe dance orchestra.
WMOA, New York, N. Y. (340.7), 6:30-7:30 p. m., Ernie Golden and his Hotel Macabin orchestra; 8-8:15, Eric Golden and his Hotel Macabin orchestra; 8-8:15, concert, William D. Kilpatrick, C. R. of Detroit; 10:30-11:30, Dr. Sydney N. Ushak.
WNYC, New York, N. Y. (520), 6:50-7 p. m., market high spots; 7:25-7:30, baseball result; 7:30-7:35, sports news; 7:35-8, dance music; 8-8:15, talk; 8:15-10:15, concert, Central Park; 10:15-10:30, "Trend of the Times"; Dr. Sydney N. Ushak.
WOO, Philadelphia, Pa. (508.2), 4:45 p. m., organ recital, Mary E. Vogt; 7:30, A. Candolier's concert orchestra; S. Marie Strand theater concert; 9, concert from WBAF; 10:30, organ recital, Mary E. Vogt.
WOR, Newark, N. J. (405.2), 8:15-7:15 p. m., Ernie Krickert's Cinderella orchestra; 7:15-7:30, sports talk; Bill Wathey; 8-8:15, Newark Philharmonic band; 9-10, Al Reed's hour; 10:45-11:30, the Commanders.
Eastern Standard or Central Daylight Saving Time Stations
KOKA, Pittsburgh, Pa. (369.1), 7 p. m., baseball; 8:45, concert; 9:55, baseball.

WBBM, Chicago, Ill. (268), 6-7 p. m., Smeacor orchestra; Charlie Garland, Dave Nudelman, Marie Wolters.
WBZ, Springfield, Mass. (333.1), 6 p. m., program, Capitol Theater orchestra; Frederick Fulton, director; 6:30, baseball results; 6:55, Capitol theater program; S. Aleppo drum corps or Shivers' band; 8:30, Althen Tibbels, whistler; Gertrude Gibson, accompanist; 8:45, B. Gason, pianist; 9, Lenox E. Burelow, baritone; 9:15, soprano recital, Ida Mae Lyons; 9:50, baseball results.
WCEE, Elgin, Ill. (275), 10:30-12 midnight, Purple Gracie orchestra, artists.
WCX, Detroit, Mich. (316.9), 6 p. m., dinner concert, Book-Castellio hotel; 7:30, hand concert, Belle Isle; musical program.
WEAR, Cleveland, Ohio (389.4), unusual program, Loew's State theater.
WGY, Schenectady, N. Y. (379.5), 5:30 p. m., dinner music, Hotel Fen; Byzr orchestra; 6:30, baseball scores; 6:55, WGY orchestra; Esther B. Van Alstyne, reader; 8, Epiph. tenor.
WHAZ, Troy, N. Y. (380), 8:15 p. m., Leona J. Evans, soprano; Henry J. Creiss, tenor; Joseph F. Hayes, pianist; Prof. Franklin Arica, violinist.
WHT, Deerfield, Ill. (399.8), 7-7:30 p. m., classical program; Al Carney, organist; 7:30-8, Kathleen Klenzer, clarinet; Northland trio; 8:20 meters; 8:30, Leo Alkan, soprano; John Clark, baritone; 8:30-9, Grayling's string trio; 9-9:30, Gladie Brothers; 9:30-10, Al Donovan, tenor; David Boyd, violinist; 9:30-10, Al Carney, organist; Milton Grossman, saxophonist; Fred Whitner, pianist; 10-10:30, Tom Brown's saxophone band; harmony, Flo Henry, Lillian Bernard; 10:30-11:30, Sammy Meek, tenor; Marjorie Maycillo, contralto; Salinger quartet; 11:30-12, Harland Morrell, musical saw soloist; Walter Ford's dance orchestra; 12-12:30, a. m., Elton and Williams, vocal duetists; Harry Sosnik, pianist; Pat Barrow, tenor; 12:30-1, Al Corney's organ recital, request program.
WID, Moseheart, Ill. (302.8), 8:45-7:15 p. m., dinner concert; 7:15-8, Moseheart Novelty orchestra; Belmont hotel trio; 10:30-11 a. m., Charley Straight and his orchestra; Albert P. Brown, organist.
WKRC, Cincinnati, Ohio (326), 8 p. m., members, American Legion; 9, Caldwell and Taylor Original Benzo boys.
WLW, Cincinnati, Ohio (422.3), 7 p. m., concert, Hotel Gibson orchestra, Robert Viscopi, director; soloist, Renee Wilder, tenor; S. popular program and entertainment, Liggett Coal Heavers; incidental solo, Liggett Red Hot Piano player; 9, songs, Walton McLaugh, Colona dance orchestra; Manoleneas, Marvett Mrs. McLaugh, accompanist; Manoleneas, Marvett Genter; 9:30, Lyric male quartet.
WMAK, Leokhart, N. Y. (265.5), 8:30-10:15 p. m., music, Max Friedman.
WMBF, Miami Beach, Fla. (384.4), 6:30-7 p. m., Fleetwood Radio orchestra; 7-7:30, Fleetwood Radio orchestra; 10-12, dance music, Fleetwood Radio orchestra, specialties.
WORD, Batavia, Ill. (275), 8:30 p. m., Bible questions and answers; 8:45, H. W. Barnard and pupils.
WOC, Washington, D. C. (469), 7:30 p. m., Washington, Cleveland baseball game; 6, U. S. Navy band.
WSAI, Cincinnati, Ohio (326), 10 p. m., program; WSAT studio, Cluco Four male quartet; Sam Passer, baritone.
WSB, Atlanta, Ga. (428.3), 5-6 p. m., Donnie Barnhardt's bedtime story; 8-9, Bez Elites trio; 10:45, Zeman's Behemians.
WTAM, Cleveland, Ohio (389.4), 6-7 p. m., Golden Pheasant orchestra; 8-9, Willard symphony; 9-10, artists program; 10-11, symphony program; 11-12, Euclid Beach dance orchestra.
WTAS, Elgin, Ill. (362.6), 8-10:30 p. m., Purple Gracie orchestra; Herbie Minz; Phil Wilcox, Berger Wedberg.
WTIC, Hartford, Conn. (348.6), 6 p. m., Emil Heiberg's Hotel Good time; Gertrude Gutter, contralto; 6:50, baseball scores; 6:55, dinner music.

Central Standard Time Stations
KFAB, Lincoln, Neb. (240), 7:30-8 p. m., Blenny Baughn's dance orchestra; 8-8:30, Clyde Davis, violinist; Arthur Haviro, violinist; Naomi Fox, pianist; Columbia dance orchestra.
KFNH, Shenandoah, Iowa (266), 7:30 p. m., concert.
KFRU, Bristol, Okla. (394.5), 7-8 p. m., Oklahoma educational hour; 8-10:30, music.
KFUO, St. Louis, Mo. (345.1), 9 p. m., "A Life of Christian Service."
KFVE, University City, Mo. (240), 7-8 p. m., Radio-gram review; Bonham Fleischer; 10, popular request songs; Jimmy Black and his "Vibe"; Oita Gibson, pianist; Jack Jackson.
KGL, Council Bluffs, Iowa (278), 7:30 p. m., Kiwanis club; Gretchen Crawford Evans, soprano; Florence Chase, Duerr, accompanist; 7:45, Dan Thompson, tenor; 7:50, Cookwell and his orchestra; Robert Hudson, boy soprano.
KSO, St. Louis, Mo. (545.1), 9 p. m., program to be announced.
KTHS, Hot Springs National Park, Ark. (374.8), 9:25 p. m., Roy Hollins' Gumbo hotel roof garden orchestra.
WBAP, Fort Worth, Texas (475.9), 7:30-8:30 p. m., program; 8:30-9, radio company; 9:30-10:45, Ward's Trail Blazers; J. J. George, C. Oram's Palace theater orchestra.
WCCO, Minneapolis-St. Paul, Minn. (416.4), 4 p. m., baseball score; 4:05, Raiders' club; 6:30, children's (Continued on page 10)



















# An Evening at Home with the Listener In

## STATIONS IN ORDER OF WAVE LENGTHS USED

Meters Call	Meters Call	Meters Call	Meters Call	Meters Call	Meters Call
226 WBRM 275.3 WJAS	315.6 KPDM	365.6 WDAF	405.2 WOR	468.5 WCAP	485.5 WRC
226 WBO 278 KWVG	315.6 WAGH	365.6 WHB	406 WBAR	468.5 WRC	485.5 WRC
240 KPAB 278 WCAU	315.6 WGBS	370 CYB	410.7 CKAC	475.9 WBAE	475.9 WBAE
240 KVEB 278 WLB	315.6 WBBH	370.2 WBBH	416.4 WCCO	475.9 WBEI	475.9 WBEI
243.8 WAMD 278 WGB	315.6 WSM	370.2 WGN	421 KIAP	480 CYL	480 CYL
250 WGES 280.2 WNAC	322.4 KOA	374.8 KTHS	428.3 WBE	483.6 WOC	483.6 WOC
250 WMBB 282.8 WOAN	325.9 WSAI	379.5 WJZ	428.3 KPO	483.6 WSUI	483.6 WSUI
252 KPWB 285.5 WKAR	326 WKAC	379.5 WHAZ	434.4 CKY	491.5 KGW	491.5 KGW
252 WGPC 285.5 WRBO	330 CXX	379.5 WJAZ	434.5 CNRO	491.5 WBP	491.5 WBP
261 KPWA 293.9 KTS	332.1 WBZ	384.4 KJR	434.5 NAA	497.7 WMC	497.7 WMC
265.5 WMAK 293.9 WBAV	336.9 KNX	384.4 WMBF	435 ATY	508.2 KLX	508.2 KLX
266 KPNF 293.9 WBAO	340.7 WKQA	389.4 WEAR	435 ATY	508.2 WIP	508.2 WIP
266 WBCN 296.9 KPRC	340.7 WMA	389.4 WTAM	435 ATY	508.2 WOC	508.2 WOC
272.6 WBER 299.8 KMG	344.6 WCEB	394.5 KRU	440.9 KLDS	516.9 CJA	516.9 CJA
272.6 WBEI 299.8 KSI	344.6 WLS	394.5 WFI	440.9 WDW	516.9 WOX	516.9 WOX
272.6 WFBH 299.8 WPG	348.6 KPAB	394.5 WLIT	440.9 WOS	516.9 WJO	516.9 WJO
273 WRW 302.8 WJJD	348.6 WVIC	394.5 WOI	447.6 WMAQ	526 WNYC	526 WNYC
275 KPAA 302.8 WTAS	352.7 WVVJ	398.8 WHAS	454.3 KFOA	526 WOAW	526 WOAW
275 WABL 302.9 CFCA	356.5 CHNC	400 PWJ	454.3 WJZ	535.4 KSW	535.4 KSW
275 WHAD 305.0 WJAR	356.9 CHNC	400 PWJ	455 KTVJ	545.1 KVV	545.1 KVV
275 WHAR 309.1 KDKA	361.2 KGO	405.2 KJY	467 KFI	545.1 KSD	545.1 KSD
275 WHD 313 CNRA	362.1 WHN	405.2 WJW			

## (FOR PACIFIC TIME)

Call	Mon. Saturday	Sunday	Monday	Tuesday	Wednesday	Thursday	Friday	Met. Call
AT9 455	Silent	9:00-4:00	Silent	Silent	Silent	Silent	Silent	455 AT9
CFCA 359.9	Silent	4:00-5:00	Silent	Silent	Silent	Silent	Silent	359.9 CFCA
CFNC 484.5	9:00-11:00	Silent	Silent	Silent	Silent	Silent	Silent	484.5 CFNC
CFNB 484.5	Silent	Silent	4:30-5:30	Silent	Silent	Silent	Silent	484.5 CFNB
CJCA 516.9	8:00-10:00	6:30-7:30	6:30-8:30	6:30-7:30	5:00-7:00	4:30-6:30	4:30-6:30	516.9 CJCA
CKAC 410.7	4:30-9:30	1:30-2:30	Silent	4:30-9:30	Silent	8:00-10:00	8:00-10:00	410.7 CKAC
CKY 384.4	Silent	5:00-7:45	Silent	6:30-8:45	Silent	6:00-7:00	6:30-7:45	384.4 CKY
CNRA 430	Silent	Silent	Silent	4:30-5:30	Silent	Silent	4:30-5:30	430 CNRA
CYB 374.5	8:15-9:45	Silent	Silent	7:15-8:15	Silent	Silent	Silent	374.5 CYB
CYL 480	Silent	Silent	Silent	8:00-9:30	Silent	Silent	8:00-9:30	480 CYL
CYX 380	Silent	Silent	7:15-8:30	Silent	Silent	Silent	7:15-8:30	380 CYX
KKKA 809.1	5:45-6:55	12:00-4:30	5:45-6:55	5:45-6:55	5:45-6:55	5:00-8:30	5:45-6:55	809.1 KKKA
KFB 240	Silent	2:30-5:00	5:20-7:00	5:20-7:00	5:20-7:00	5:30-8:00	5:30-8:00	240 KFB
KFAE 348.6	Silent	Silent	7:00-9:00	Silent	Silent	Silent	7:00-9:00	348.6 KFAE
KFAU 275	Silent	Silent	7:00-8:00	Silent	Silent	Silent	7:00-8:00	275 KFAU
KFDU 816.9	Silent	6:00-7:00	Silent	6:00-8:00	Silent	Silent	6:00-8:00	816.9 KFDU
KFI 487	6:45-12:00	4:00-1:30	6:45-11:00	6:45-11:00	6:45-11:00	6:45-11:00	6:45-11:00	487 KFI
KFMW 299.8	Silent	Silent	Silent	7:30-8:30	Silent	Silent	7:30-8:30	299.8 KFMW
KFN 260	3:30-6:30	4:30-8:00	5:30-6:30	5:30-6:30	5:30-6:30	5:30-6:30	5:30-6:30	260 KFN
KFOA 454.3	6:00-11:30	Silent	6:00-10:00	6:00-11:30	6:00-10:00	Silent	6:00-11:30	454.3 KFOA
KFRU 394.5	5:30-10:00	Silent	5:30-10:00	5:30-10:00	5:30-10:00	5:30-10:00	5:30-10:00	394.5 KFRU
KFS 241	Silent	6:15-7:15	6:00-7:00	Silent	7:15-8:15	Silent	6:00-7:00	241 KFS
KFV 241	8:00-10:00	Silent	8:00-10:00	Silent	8:00-10:00	Silent	8:00-10:00	241 KFV
KFWA 261	Silent	7:00-10:00	8:00-10:00	8:00-9:00	8:00-10:00	Silent	8:00-10:00	261 KFWA
KFWB 252	7:00-11:00	9:00-11:00	6:30-11:00	7:45-11:00	7:00-11:00	7:00-11:00	7:00-11:00	252 KFWB
KGW 292	8:00-1:00	3:30-8:00	8:00-1:00	8:00-1:00	8:00-1:00	8:00-1:00	8:00-1:00	292 KGW
KHJ 401.2	5:30-11:00	8:00-11:00	7:00-1:30	5:30-11:00	Silent	8:00-12:00	5:30-11:00	401.2 KHJ
KIAF 452	Silent	2:00-3:00	7:00-8:00	Silent	7:00-8:00	Silent	7:00-8:00	452 KIAF
KJR 384.4	Silent	7:00-8:00	6:00-10:00	Silent	8:30-10:00	10:30-12:00	8:30-10:00	384.4 KJR
KJS 293.9	Silent	7:15-8:30	Silent	8:00-9:00	Silent	8:00-9:00	8:00-9:00	293.9 KJS
KLDS 380	Silent	4:30-8:00	Silent	6:15-7:30	Silent	6:00-7:00	6:00-7:00	380 KLDS
KLX 508.2	Silent	Silent	6:00-10:00	Silent	Silent	6:30-12:00	6:00-10:00	508.2 KLX
KNX 398.9	8:00-2:00	8:00-2:00	8:00-12:00	8:00-12:00	7:00-10:00	6:30-12:00	8:00-2:00	398.9 KNX
KOA 322.4	Silent	2:00-8:00	5:30-8:00	Silent	5:30-8:00	Silent	5:30-8:00	322.4 KOA
KPC 269.9	6:25-12:30	6:30-10:00	6:30-11:00	6:30-11:00	6:30-11:00	6:30-11:00	6:30-11:00	269.9 KPC
KPRC 545.1	5:00-7:30	Silent	7:00-9:00	6:00-8:00	6:00-8:00	6:00-8:00	6:00-8:00	545.1 KPRC
KSL 298.8	Silent	8:00-10:00	7:00-10:00	8:00-10:00	7:00-10:00	7:00-10:00	8:00-10:00	298.8 KSL
KTVJ 451.3	Silent	7:25-8:25	8:00-9:00	7:00-8:00	7:00-8:00	6:30-7:30	7:00-8:00	451.3 KTVJ
KTHS 374.8	Silent	7:25-8:25	7:25-8:25	7:25-8:25	7:25-8:25	7:25-8:25	7:25-8:25	374.8 KTHS
KTW 455	Silent	7:00-9:30	Silent	Silent	Silent	Silent	7:00-9:30	455 KTW
KWVG 278	6:30-7:30	Silent	Silent	6:30-7:30	Silent	Silent	6:30-7:30	278 KWVG
KYW 538.4	4:00-8:00	1:00-5:00	Silent	4:00-8:00	4:00-8:00	4:00-8:00	4:00-8:00	538.4 KYW
NAA 434.5	Silent	Silent	4:45-5:00	4:45-5:00	4:45-5:00	4:45-5:00	4:45-5:00	434.5 NAA
PW 451.3	5:30-8:00	Silent	Silent	5:30-8:00	Silent	Silent	5:30-8:00	451.3 PW
WABL 275	Silent	Silent	4:00-6:00	Silent	Silent	Silent	4:00-6:00	275 WABL
WAG 315.6	9:00-11:00	Silent	4:00-10:00	Silent	3:30-8:00	Silent	4:00-10:00	315.6 WAG
WAMD 243.8	12:00-8:00	Silent	8:00-9:00	Silent	8:00-9:00	8:00-9:00	8:00-9:00	243.8 WAMD
WBAO 293.9	5:00-6:00	Silent	4:30-10:00	5:30-8:45	5:30-8:45	5:30-8:45	5:30-8:45	293.9 WBAO
WBAR 405	Silent	3:00-9:00	7:00-9:00	Silent	Silent	Silent	3:00-9:00	405 WBAR
WBAV 293.9	Silent	5:00-7:00	Silent	Silent	Silent	Silent	5:00-7:00	293.9 WBAV
WBBM 226	5:00-9:00	1:00-11:00	Silent	5:00-9:00	5:00-9:00	5:00-9:00	5:00-9:00	226 WBBM
WBBR 272.6	4:00-5:00	4:00-5:00	4:00-5:00	Silent	4:00-5:00	4:00-5:00	4:00-5:00	272.6 WBBR
WBN 266	6:00-10:00	2:00-9:00	Silent	6:00-12:00	6:00-9:00	6:00-10:00	6:00-10:00	266 WBN
WBZ 333	Silent	4:00-5:55	4:00-5:55	4:00-5:55	4:00-5:55	4:00-5:55	4:00-5:55	333 WBZ
WCAE 461.3	4:00-5:30	2:30-5:30	4:00-8:00	4:00-7:00	4:00-7:00	4:00-7:00	4:00-7:00	461.3 WCAE
WCAP 468.5	Silent	1:00-6:15	4:20-7:00	Silent	3:45-7:00	Silent	4:20-7:00	468.5 WCAP
WCB 276	Silent	1:00-4:00	Silent	2:30-5:00	2:30-7:45	2:30-7:45	2:30-7:45	276 WCB
WCCB 324.5	Silent	5:00-7:30	Silent	5:00-7:30	Silent	5:00-7:30	5:00-7:30	324.5 WCCB
WCCO 416.4	4:05-9:00	5:20-8:15	4:00-7:00	4:00-7:00	4:00-7:00	4:00-7:00	4:00-7:00	416.4 WCCO
WCG 519.9	3:00-4:00	3:00-4:00	3:00-6:30	3:00-6:30	3:00-6:30	3:00-6:30	3:00-6:30	519.9 WCG
WDAF 365.9	4:00-11:00	2:00-3:30	4:00-11:00	4:00-11:00	4:00-11:00	4:00-11:00	4:00-11:00	365.9 WDAF
WDFA 480.9	Silent	1:00-2:45	Silent	4:30-5:30	Silent	Silent	1:00-2:45	480.9 WDFA
WDFW 322.4	Silent	2:00-8:00	2:00-8:00	2:00-8:00	2:00-8:00	2:00-8:00	2:00-8:00	322.4 WDFW
WEAO 293.9	Silent	Silent	3:00-7:30	Silent	Silent	Silent	3:00-7:30	293.9 WEAO
WEAR 389.4	4:00-12:00	12:30-7:00	4:00-5:00	4:00-5:00	4:00-5:00	4:00-5:00	4:00-5:00	389.4 WEAR
WEBH 370.2	4:30-9:30	4:30-6:00	Silent	4:30-9:30	4:30-9:30	4:30-9:30	4:30-9:30	370.2 WEBH
WEEI 475.9	Silent	3:30-6:25	Silent	4:00-7:00	4:00-7:00	4:00-7:00	4:00-7:00	475.9 WEEI
WF 314.5	2:00-3:45	12:30-4:30	Silent	4:00-6:00	2:45-3:45	3:45-7:00	2:45-3:45	314.5 WF
WFAB 275.9	Silent	3:30-8:00	Silent	3:30-8:00	Silent	Silent	3:30-8:00	275.9 WFAB
WFB 476.9	6:30-10:00	1:00-4:00	7:30-10:00	7:30-10:00	7:30-10:00	7:30-10:00	7:30-10:00	476.9 WFB
WFI 394.5	2:00-3:45	12:30-4:30	Silent	4:00-6:00	2:45-3:45	3:45-7:00	2:45-3:45	394.5 WFI
WFO 324.5	Silent	3:30-8:00	Silent	3:30-8:00	Silent	Silent	3:30-8:00	324.5 WFO
WGBS 315.6	2:30-8:00	2:30-8:00	Silent	2:30-8:00	2:30-8:00	2:30-8:00	2:30-8:00	315.6 WGBS
WGES 250	7:30-11:00	7:30-11:00	Silent	7:30-11:00	7:30-11:00	7:30-11:00	7:30-11:00	250 WGES
WGW 370.2	3:30-8:30	6:00-7:00	Silent	3:30-8:30	3:30-8:30	3:30-8:30	3:30-8:30	370.2 WGW
WHD 319	4:15-6:15	11:30-12:30	4:00-9:00	4:00-7:00	4:00-7:00	4:00-7:00	4:00-7:00	319 WHD
WJAS 324.5	6:00-9:00	3:30-8:00	3:30-8:00	4:15-8:00	Silent	3:45-7:30	4:15-7:30	324.5 WJAS
WHAD 275	4:00-5:00	Silent	4:00-8:00	4:00-8:00	4:00-10:30	4:00-5:00	4:00-5:00	275 WHAD
WHAR 275	4:00-5:00	Silent	4:00-8:00	4:00-8:00	4:00-10:30	4:00-5:00	4:00-5:00	275 WHAR
WHAS 398.5	5:30-7:00	2:30-9:00	Silent	5:30-7:00	Silent	Silent	5:30-7:00	398.5 WHAS
WHAZ 379.5	Silent	6:00-8:00	Silent	Silent	Silent	Silent	6:00-8:00	379.5 WHAZ
WHB 315.6	Silent	6:00-11:00	5:00-6:00	Silent	5:00-6:00	6:00-8:30	5:00-6:00	315.6 WHB
WHN 361.2	Silent	3:30-8:00	3:30-8:00	3:30-8:00	3:30-8:00	3:30-8:00	3:30-8:00	361.2 WHN
WHO 526	Silent	5:30-7:00	5:30-10:00	5:30-7:00	5:30-10:00	5:30-10:00	5:30-7:00	526 WHO
WHT 399.4	4:00-10:00	9:00-7:30	4:00-7:30	4:00-10:00	4:00-10:00	4:00-10:00	4:00-10:00	399.4 WHT
WIB 226	3:00-5:00	3:00-9:00	Silent	3:00-12:00	3:00-9:00	3:00-12:00	3:00-12:00	226 WIB
WJ 480.2	Silent	4:00-9:00	Silent	4:00-9:00	Silent	Silent	4:00-9:00	480.2 WJ
WJAR 305.9	Silent	3:20-6:15	4:00-8:00	Silent	3:50-4:30	4:00-7:00	4:00-8:00	305.9 WJAR
WJAS 275.3	Silent	Silent	5:30-8:00	5:30-8:00	5:30-8:00	4:00-7:00	4:00-7:00	275.3 WJAS
WJID 315.6	Silent	5:45-7:00	3:45-10:00	3:45-10:00	3:45-7:00	Silent	3:45-10:00	315.6 WJID
WJZ 405.2	Silent	4:15-6:15	4:00-7:00	4:00-7:00	4:00-7:00	4:00-7:00	4:00-7:00	405.2 WJZ
WJW 454.3	3:00-7:30	4:00-7:00	4:15-5:15					



# An Evening at Home with the Listener In

(FOR CENTRAL TIME)

(Tabular form and listings copyrighted. Reproduction is forbidden.)

(FOR EASTERN TIME Or Cities Using Central Daylight Saving Time)

Call	Saturday	Sunday	Monday	Tuesday	Wednesday	Thursday	Friday	Call	Location	Met.	Saturday	Sunday	Monday	Tuesday	Wednesday	Thursday	Friday	Call	
AT9	Silent	5:00-6:00	Silent	Silent	Silent	7:00-8:55	Silent	AT9	Fort Bragg, N. C.	435	Silent	6:00-7:00	Silent	Silent	8:00-9:55	Silent	Silent	AT9	
CFCA	Silent	6:00-7:00	Silent	7:15-8:15	7:15-8:15	7:15-8:15	Silent	CFCA	Toronto, Ont.	356.9	Silent	7:00-8:00	Silent	8:15-9:15	8:15-9:15	8:15-9:15	Silent	CFCA	
CFGN	Silent	11:00-1:30	Silent	Silent	Silent	9:00-10:00	Silent	CFGN	Calgary, Alta.	434.5	12:00-2:00	Silent	Silent	Silent	Silent	Silent	Silent	CFGN	
CHNC	Silent	Silent	6:30-7:30	Silent	Silent	Silent	Silent	CHNC	Toronto, Ont.	356.9	Silent	7:30-8:30	Silent	Silent	Silent	Silent	Silent	CHNC	
CJCA	10:00-12:00	8:30-9:30	8:30-10:30	8:30-9:00	7:00-9:00	10:00-12:00	8:30-12:00	CJCA	Edmonton, Can.	516.9	11:00-1:00	9:30-10:30	9:30-11:00	9:30-10:00	8:00-10:00	11:00-1:00	10:30-1:00	CJCA	
CKAC	5:30-9:30	Silent	Silent	5:30-9:30	5:30-9:30	6:30-7:30	6:30-7:30	CKAC	Montreal, Que.	410.7	6:00-10:00	Silent	Silent	6:50-10:00	Silent	7:30-8:30	Silent	CKAC	
CKY	Silent	7:00-9:45	Silent	8:30-10:45	8:00-9:00	8:50-9:45	Silent	CKY	Winnipeg, Man.	394.4	Silent	8:00-10:45	Silent	Silent	9:30-11:45	Silent	9:30-10:45	CKY	
CNRA	Silent	Silent	Silent	6:30-7:30	Silent	Silent	6:30-7:30	CNRA	Moncton, Can.	513	Silent	Silent	Silent	7:30-8:30	Silent	Silent	CNRA		
CNRO	6:30-11:30	Silent	Silent	Silent	6:30-11:30	Silent	Silent	CNRO	Ottawa, Ont.	434.5	7:30-12:30	Silent	Silent	Silent	7:30-12:30	Silent	Silent	CNRO	
CYB	10:30-11:45	Silent	Silent	9:15-10:15	Silent	Silent	Silent	CYB	Mexico City, Mex.	870	11:30-12:15	Silent	Silent	10:15-11:15	Silent	Silent	Silent	CYB	
CYX	Silent	Silent	Silent	10:00-11:30	Silent	Silent	10:00-11:30	CYX	Mexico City, Mex.	400	Silent	Silent	Silent	11:00-12:30	Silent	Silent	Silent	CYX	
KDKA	7:45-8:55	4:00-6:30	7:45-8:55	7:45-10:30	7:45-8:55	7:00-10:30	7:45-8:55	KDKA	Pittsburgh, Pa.	309.1	8:45-9:55	3:00-7:30	8:45-9:55	8:45-9:55	8:00-11:30	8:45-9:55	8:00-11:30	KDKA	
KFAB	Silent	Silent	7:30-9:30	Silent	7:30-9:30	Silent	7:30-9:30	KFAB	Lincoln, Neb.	240	Silent	5:00-6:30	8:30-10:30	Silent	Silent	Silent	Silent	KFAB	
KFAE	Silent	Silent	Silent	Silent	9:00-11:00	Silent	Silent	KFAE	Pullman, Wash.	348.6	Silent	Silent	Silent	10:30-12:00	Silent	Silent	Silent	KFAE	
KFAU	Silent	Silent	9:00-10:00	Silent	9:00-10:00	Silent	9:00-10:00	KFAU	Basis, Idaho	275	Silent	Silent	10:00-11:00	Silent	Silent	Silent	Silent	KFAU	
KFDK	Silent	Silent	Silent	8:30-10:30	Silent	8:00-10:30	Silent	KFDK	Bismarck, S. Dak.	315.6	Silent	9:00-10:00	Silent	9:00-11:30	Silent	Silent	Silent	KFDK	
KFI	8:45-2:00	6:00-1:00	8:45-1:00	8:45-1:00	8:45-1:00	8:45-1:00	8:45-1:00	KFI	Los Angeles, Calif.	467	9:45-3:00	7:00-2:00	9:45-2:00	9:45-2:00	9:45-2:00	9:45-2:00	9:45-2:00	KFI	
KFMQ	Silent	Silent	Silent	7:50-8:30	7:50-8:30	7:50-8:30	7:50-8:30	KFMQ	Fayetteville, Ark.	299.3	Silent	Silent	Silent	10:00-11:00	Silent	Silent	Silent	KFMQ	
KFNH	7:30-8:30	6:30-10:00	7:30-8:30	7:30-8:30	7:30-8:30	7:30-8:30	7:30-8:30	KFNH	Shenandoah, Ia.	256.2	8:30-9:30	7:30-11:00	8:30-9:30	Silent	8:30-9:30	8:30-9:30	8:30-9:30	KFNH	
KFOA	8:00-1:30	5:00-7:00	8:00-1:30	8:00-1:30	8:00-1:30	8:00-1:30	8:00-1:30	KFOA	Seattle, Wash.	468.3	9:00-2:30	Silent	9:00-2:30	Silent	9:00-2:30	Silent	9:00-2:30	KFOA	
KFUD	Silent	8:15-9:15	8:00-9:00	Silent	9:15-10:15	Silent	Silent	KFUD	Bristow, Okla.	545.1	Silent	6:00-8:00	6:00-11:30	11:30-1:00	9:00-11:30	11:30-12:30	12:30-2:00	KFUD	
KFVU	10:30-12:00	Silent	10:00-12:00	10:00-12:00	10:00-12:00	Silent	Silent	KFVU	University City, Mo.	240	11:00-1:00	Silent	11:00-1:00	11:00-1:00	11:00-1:00	11:00-1:00	11:00-1:00	KFVU	
KFWA	Silent	9:00-12:00	10:00-12:00	10:00-11:00	10:00-11:00	10:00-11:00	10:00-11:00	KFWA	Ogden, Utah	261	Silent	10:00-1:00	11:00-1:00	11:00-1:00	11:00-1:00	11:00-1:00	11:00-1:00	KFWA	
KGWB	9:00-1:00	8:30-1:00	9:00-1:00	9:00-1:00	9:00-1:00	9:00-1:00	9:00-1:00	KGWB	Hollywood, Calif.	353	8:45-9:45	9:15-10:15	9:00-10:00	Silent	Silent	Silent	Silent	KGWB	
KGO	10:00-3:00	5:30-11:00	10:00-3:00	10:00-3:00	10:00-3:00	10:00-3:00	10:00-3:00	KGO	Portland, Ore.	491.5	9:00-3:00	10:45-12:00	9:00-2:00	9:00-2:00	9:00-2:00	9:00-2:00	9:00-2:00	KGO	
KHJ	7:30-1:00	8:00-1:00	8:00-1:00	7:30-1:00	7:30-1:00	7:30-1:00	7:30-1:00	KHJ	Los Angeles, Calif.	405.2	8:00-3:00	7:30-2:00	8:00-2:00	8:00-2:00	8:00-2:00	8:00-2:00	8:00-2:00	KHJ	
KIAP	Silent	4:00-3:00	9:00-10:00	Silent	9:00-10:00	Silent	9:00-10:00	KIAP	Sittig, Minn.	421	Silent	3:00-4:00	8:00-9:00	Silent	Silent	Silent	Silent	KIAP	
KJF	Silent	10:00-10:00	9:00-12:00	Silent	10:00-12:00	13:30-1:00	10:00-12:00	KJF	Seattle, Wash.	394.4	Silent	10:00-11:00	9:00-1:00	Silent	11:30-1:00	1:30-3:00	11:30-1:00	KJF	
KLDS	Silent	6:20-10:00	Silent	8:00-9:00	Silent	8:00-9:00	Silent	KLDS	Independence, Mo.	440.9	Silent	7:30-11:00	Silent	Silent	9:00-10:00	Silent	Silent	KLDS	
KLX	Silent	9:00-1:00	Silent	8:00-1:00	8:00-1:00	8:00-1:00	8:00-1:00	KLX	Oakland, Calif.	508.2	Silent	Silent	9:00-2:00	Silent	9:00-2:00	Silent	Silent	KLX	
KMP	10:00-4:00	7:00-1:00	8:30-2:00	8:30-2:00	9:00-12:00	8:30-2:00	8:30-2:00	KMP	Hollywood, Calif.	353.1	11:00-5:00	8:00-2:00	6:30-9:00	9:30-3:00	10:00-1:00	9:30-3:00	9:30-3:00	KMP	
KNO	8:25-2:00	8:30-12:00	8:30-1:00	8:30-1:00	8:30-1:00	8:30-1:00	8:30-1:00	KNO	San Francisco, Calif.	428.3	9:25-3:00	9:00-1:00	9:00-1:00	9:00-1:00	9:00-1:00	9:00-1:00	9:00-1:00	KNO	
KPC	8:30-3:00	7:15-9:00	8:30-9:30	8:30-9:30	8:30-9:30	8:30-9:30	8:30-9:30	KPC	Houston, Texas	296.9	9:30-10:30	8:15-9:00	9:30-10:30	9:30-10:30	9:30-10:30	9:30-10:30	9:30-10:30	KPC	
KSD	9:00-4:30	8:00-1:00	9:00-1:00	9:00-1:00	9:00-1:00	9:00-1:00	9:00-1:00	KSD	St. Louis, Mo.	515.1	8:00-1:00	Silent	10:00-12:00	9:00-11:00	9:00-11:00	9:00-11:00	9:00-11:00	KSD	
KSL	9:00-12:00	8:00-1:00	9:00-1:00	9:00-1:00	9:00-1:00	9:00-1:00	9:00-1:00	KSL	Salt Lake City, Utah	305.9	Silent	11:00-1:00	11:00-1:00	11:00-1:00	11:00-1:00	11:00-1:00	11:00-1:00	KSL	
KTCL	9:25-10:25	9:25-10:25	9:25-10:25	9:25-10:25	9:25-10:25	9:25-10:25	9:25-10:25	KTCL	Hot Springs, Ark.	374.8	10:25-11:25	10:25-11:25	10:25-11:25	10:25-11:25	10:25-11:25	10:25-11:25	10:25-11:25	KTCL	
KWGG	8:30-9:30	Silent	Silent	8:30-9:30	Silent	Silent	Silent	KWGG	Brownsville, Texas	278	9:30-10:30	Silent	Silent	9:30-10:30	Silent	Silent	Silent	KWGG	
KTW	Silent	9:00-11:30	Silent	Silent	Silent	Silent	Silent	KTW	Seattle, Wash.	455	Silent	10:00-12:30	Silent	Silent	Silent	Silent	Silent	KTW	
KWV	6:00-12:30	5:00-7:00	Silent	6:00-12:30	6:00-12:30	6:00-12:30	6:00-12:30	KWV	Chicago, Ill.	535.4	7:00-1:30	4:00-8:00	Silent	7:00-11:30	7:00-1:30	7:00-1:30	7:00-1:30	KWV	
NAX	Silent	Silent	Silent	6:45-7:00	6:45-7:00	6:45-7:00	6:45-7:00	NAX	Havana, Cuba	434.3	Silent	Silent	Silent	Silent	Silent	Silent	Silent	NAX	
PWW	7:30-10:00	Silent	Silent	Silent	7:30-10:00	Silent	Silent	PWW	Chicago, Ill.	400	8:30-11:00	Silent	Silent	Silent	Silent	Silent	Silent	PWW	
WABL	11:00-1:30	Silent	6:00-8:00	Silent	6:00-8:00	Silent	6:00-8:00	WABL	Richmond, Va.	275	Silent	Silent	7:00-9:00	Silent	Silent	Silent	Silent	WABL	
WAMG	10:00-11:00	2:00-10:00	Silent	10:00-11:00	10:00-11:00	10:00-11:00	10:00-11:00	WAMG	Manassas, Va.	243.8	10:00-12:00	3:00-11:00	11:00-12:00	11:00-12:00	11:00-12:00	11:00-12:00	11:00-12:00	WAMG	
WAP	8:00-8:00	11:00-11:00	7:30-12:00	7:30-10:45	7:30-10:45	7:30-10:45	7:30-10:45	WAP	Fort Worth, Texas	475.8	8:00-9:00	12:00-1:00	8:50-2:00	8:30-11:45	8:30-11:45	8:30-11:45	8:30-11:45	8:30-11:45	WAP
WBAR	Silent	10:00-11:30	10:00-11:30	Silent	8:00-9:00	8:00-9:00	8:00-9:00	WBAR	St. Louis, Mo.	409	Silent	11:00-12:00	10:00-11:00	10:00-11:00	10:00-11:00	10:00-11:00	10:00-11:00	WBAR	
WDY	Silent	7:00-9:00	Silent	Silent	Silent	Silent	Silent	WDY	Columbus, O.	255.3	Silent	Silent	8:00-10:00	Silent	Silent	Silent	Silent	WDY	
WBBM	7:00-11:00	3:00-1:00	Silent	7:00-11:00	7:00-11:00	7:00-9:00	7:00-9:00	WBBM	Chicago, Ill.	229	8:00-12:00	9:00-2:00	Silent	8:00-12:00	8:00-10:00	8:00-12:00	8:00-10:00	WBBM	
WBBR	6:00-7:00	6:00-7:30	Silent	6:00-7:00	6:00-7:00	6:00-7:00	6:00-7:00	WBBR	Staten Island, N. Y.	275	Silent	8:00-9:00	Silent	Silent	Silent	Silent	Silent	WBBR	
WBCN	8:00-12:00	4:00-11:00	Silent	8:00-2:00	7:00-11:00	8:00-12:00	8:00-12:00	WBCN	Chicago, Ill.	268	9:00-1:00	5:00-10:00	Silent	Silent	Silent	Silent	Silent	WBCN	
WBBZ	Silent	6:00-7:30	6:00-7:30	7:15-7:55	6:00-7:55	6:30-7:55	6:15-7:55	WBBZ	Springfield, Mass.	333.1	Silent	7:00-8:30	7:00-8:55	8:15-8:55	8:15-8:55	8:15-8:55	8:15-8:55	WBBZ	
WGAE	6:00-7:30	4:30-7:30	6:00-10:00	6:00-9:00	6:00-9:00	6:00-9:00	6:00-9:00	WGAE	Pittsburgh, Pa.	461.3	7:00-8:30	5:30-8:30	7:00-11:00	7:00-10:00	7:00-10:00	7:00-10:00	7:00-10:00	WGAE	
WCAP	Silent	8:00-8:15	6:20-9:30	Silent	8:00-9:00	6:20-9:30	6:20-9:30	WCAP	Washington, D. C.	668.5	Silent	4:00-7:00	7:30-10:00	Silent	6:45-10:00	Silent	Silent	WCAP	
WCAU	Silent	1:30-9:00	6:00-9:30	Silent	5:30-10:00	4:30-9:45	4:30-9:30	WCAU	Philadelphia, Pa.	278	Silent	5:00-11:00	5:00-11:00	Silent	5:00-11:00	Silent	Silent	WCAU	
WCCB	Silent	1:30-9:00	6:00-9:30	Silent	7:00-9:30	7:00-9:30	7:00-9:30	WCCB	Zion, Ill.										

# Radio Digest

PROGRAMS  
Illustrated

Published by the Radio Digest Publishing Company, Inc.  
510 North Dearborn Street  
Chicago, Illinois  
Telephones: State 4372, 4373, 4374, 4375

E. C. RAYNER, Publisher

Eastern Office, Park-Lexington Building, 247 Park Ave.,  
New York. Telephones: Ashland 8144, 8145, 8146

Member of the Audit Bureau of Circulations

241

PUBLISHED WEEKLY

SUBSCRIPTION RATES

Yearly in U. S. and Possessions and Canada, \$5.00  
Foreign postage, \$1.00 additional Single copies, 10 cents.

Vol. XIV Saturday, July 18, 1925 No. 2

## Power by Radio Means What?

REPORTS from Italy, communicated to Radio Digest through the department of commerce, tell how Midali, an Italian scientist, has succeeded in accomplishing another dream of years, the transmission of electrical energy without the use of wires and without noticeable losses.

Has Midali uncovered the secret? Has he, in exploring the micrometric wave lengths so short they almost resemble light, discovered what will eventually replace the use of cables and high tension lines for the carrying of power? Perhaps Midali has succeeded. Perhaps, too, he has succeeded in the laboratory but will fail to make practical application of his device.

Great power generating companies are investigating Midali's work. If he has something, his name will be as famous as Marconi's, Maxwell's, Volta's or Ohm's.

Supposing his discovery leads to successful commercial application. What then will the future electric lighting and power supply company resemble? Close to water power or coal mines will be gigantic generating stations. At each of these stations will be mammoth reflecting antenna systems, pointing their power waves to smaller substations or the larger factories. At the substations will be receiving reflectors. These will pick up the power bearing waves from the parent station and relay it on its way through the ether to consumers. Every consumer will have a reflector receiving aerial which will pick up the focused and directed waves. Foolproof devices will convert these waves to electric current identical with that in use today, measure it in meters and send it through the wires on the premises of the consumer.

Similarly electric cars, locomotives, ships, submarines, airplanes, airships and even automobiles may pick up these directed waves of power. No longer will mobile equipment need to carry individual power plants, such as gasoline or steam engines. No longer will electric cars obtain their power from trolley wire or third rail.

Such efficiency as has never been known before will be the ultimate goal reached. The city beautiful, unmarred by overhead wires or blackened by the belching smoke of individual power and heating plants, will be a dream come true.

## Presentation of Broadcasts

PRESENTATION is beginning to make its appearance on Radio programs. By presentation, we mean a successful effort to coordinate and assemble the various talent and numbers so as to give a complete theme of continuous entertainment without jerking back and forth between disconnected bits of sublime and ridiculous.

Presentation is the difference between a dime and a fifty-cent motion picture house. The films may be the same, but people prefer to pay the additional forty cents just to have the smooth and pleasing presentation given by the higher priced house.

The Radio program impresario is coming into his own day by day. WOC recently gave such an evening's entertainment when it presented the Crescent orchestra, directed by Bernie Schultz. The Eveready Hours are always presentations. WGN, under Quin Ryan's supervision, is now giving the listening public something entirely new in the way of presentations. Many other stations, too many to mention, are pioneering in this great work.

We welcome the coming of presentation to broadcasting.

## Whose Name Is It?

TWO well-known stations, WNAC at Boston and WHT at Chicago, are fighting over the use of the name "Jean Sargent." Legally the name belongs to the Boston broadcaster. It was a company name, assigned to a woman, Bertha Mitchell, and used over the air first time by her. In the succeeding years of its use by Miss Mitchell, the name became famous chiefly because of Miss Mitchell's excellent personality and ability to handle the role she played in WNAC's activities.

Regardless of whose name it is, the outcome will be the same.

"A rose by any other name would be just as sweet."

## RADIO INDI-GEST

### Radio

List to the singing Radio,  
Songs that come and songs that go;  
Words of wisdom, words of cheer,  
Voices that we love to hear.

Out of the void—how they run,  
Quick as a lightning flash, they come;  
No wind, nor snow, nor storms delay  
These feet-foot messengers we play.

Alladin's lamp held no such thrill,  
We press a button, take our fill  
Of song or story, dance or jest,  
Of anything that we like best.

Out on the mountain, plain, or sea,  
Any place we chance to be;  
Day or night, it serves us now,  
We never cease to wonder—how?

H. F. K.

Full data may be obtained on how Radio works by writing to John G. Ryan of Radio Digest. (Adv.)

### Speaking of Receivers

LONDON, ENG.—The engineer of the Nottingham station of the British Broadcasting company states that, without the aid of any special apparatus, he has picked up news a week after it had been broadcast. He prophesies it may be possible to pick up matter broadcast within a month. (News story.)

That, however, is not as remarkable as you might think. We know a certain gentleman, who, with no apparatus, much less no "special" apparatus, catches points in jokes anywhere from five minutes to five months after they are broadcast. But because that has no direct relation to Radio we never told you about it before.

### Radio-(in)-Active

How does the little Radio  
That rests upon the stand,  
Give us the oratorio  
We listen for, so grand?

We give the dial a turn or two,  
We hear a hum and roar,  
And soon a still, small voice comes through  
—"We're signing off—10-04."

Buy turning to "An Evening at Home with the Listener in" the annoyance of tuning in too late can be avoided. (Adv.)

### Lament

#### (To Be Read to Sad Music)

How lonesome, how very lonesome it seemed! For she was gone. Gone—and never to return. No longer would he hear her gentle voice crooning the children to sleep by simple stories. Never more would her sweet voice be wafted to his ears in song. She was gone from him forever. As he entered the house, who would be there to impart the news of the day? Alas, no one. It was heartbreaking, and he could stand the strain no longer. He burst into tears. Why, oh, why, had he sold his precious super-het. W. C. N.

A card to Jacques Fournier of Radio Digest will bring, postpaid, full directions for building a new super-het in two parts. (Adv.)

### Fox Trots for Finland by "Banderoll"

Dear Indi: Here is a letter of appreciation, given exactly as it was received by the British Broadcasting company from Wasa, Finland.

To the Conductor of the B. B. C. at London. We musicians at a moving picture theater in Wasa, Finland, are often after work enjoying your lovely music from Savoy by Radio. Also we send our best regards to your perfect singer of refrains.

We would be very much obliged to you if you would be kind enough to send us by banderoll some of your last and most popular dancing music foxtrots by ex. By Baby, "I love you," etc. It is for us impossible to get these notes here. We send herewith 2 dollars.

Hopping our request not makes to much trouble we remain, etc.

The B. B. C. has returned the dollars, and the dance bands management has sent over a liberal quantity of its music. A. C. B.

Hold your hats and don't stand up in the car. The Banderoll is starting and the first dip is very steep.

### In the Lack of a Horn

Radio headsets with stick-tite clamps, guaranteed to hold during a dance, is expected to be the next development, according to one listener in on KGO, who has use for such equipment now.

Otto Schroeder, Palo Alto, California, Radio fan, admits that he is 63 years young, and has this to say in a recent applause note to KGO:

"Say, you should see Ma and I dancing when KGO plays dance music. Somebody will no doubt soon invent ear phones that will stay on. Then we'll be happy."

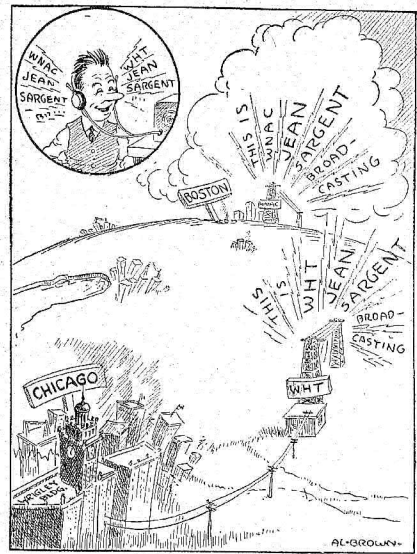
Or you might say—

The music played and we shook a mean foot  
With a do-see-do and a kick;  
But the trot was spoiled when the climax came  
And the darned head phones wouldn't stick.  
As long as you watch you can keep 'em in place,  
But it's bound to make anyone sore  
When the band warms up for "Boy Is She Hot"  
And the earlups flop on the floor.

Even at that we are inclined to think keeping the phones on would be the least of the trouble. What we can't figure out is how they get untangled from the phone wires when the evening ends.

The summer slump is here! Once again Fish stories are displacing long-distance Radio tables.

## Simultaneous Broadcasting



## Condensed

### BY DIELECTRIC

WGY, Schenectady, never fails to please when they put on an organ recital. The instrument is excellent and the organist is perfectly familiar with it. It offers a handicap usually from the fact of its peculiarly difficult characteristics for transmitting purposes, in addition to which is the oftentimes illicit use made of its inherent quality of tone in seeking to emulate some other instrument or band of instruments. Thanks, WGY.

Soon after WEA and KHJ, at widely separated parts of the country, found that the continuity program with a thread of story running through to hold interest and connect the various parts together, was an improvement over the plain, unvarnished type of Radio program, we began to be deluged with continuities of every conceivable form, most of them built on a very flimsy structure. The announcement of another from KFVB the other night nearly caused me to tune them out but upon staying found myself in the midst of a rib-tickling, hilarious and farcical version of the usual continuity. After such a show I'll be more critical than ever of the serious ones for comedy is a hard thing to put over—over the air.

Since most of our larger stations now are operating under commercial contracts we are having our music thrust upon us under various and sundry names, ranging from "Tire Orchestra" to "Happiness Trios." Of all the incongruous names, however, we are obliged to hand the palm to a western orchestra masquerading under the title of a "non-detonating" dance orchestra, particularly so as this one happened to be one of the noticeably detonating kind. My own reaction to such advertising would not bring much coin to the cash register of the firm sponsoring.

Whenever there is a convention of this or that lodge nowadays it is pretty sure to have a Radio hearing, and that is only fair to the brother members unable to raise the price of a trip across country. I am not a Kiwanian—maybe you're not—but it was enjoyable and something out of the routine to listen in to their meeting out in St. Paul-Minneapolis through WCCO.

Speeches are almost always tiresome to the general run of listeners in, particularly where there are a dozen or so repeating each other. Whatever you may think of Al Smith, his speeches are sure to be laden with some Smithisms, which bear little resemblance to those made by any other state governor. WHAZ, Troy, N. Y., broadcast the spirited defense made by Governor Smith before his state legislature of a parking plan. It was at night, a special session, and all the world could hear.

This is not the time of year when those living out of Florida (headquarters for realtors) pay very much attention to that state. With Radio it is different. WMBF, Miami, has come back on the air with new schedules and a fairly good dance orchestra to entertain us. We shall see if their summer features are worth risking the heat for.

WNAC, Boston, took a night off its regular line to give a French evening. Maybe that was to get us listeners in shape for next winter when France speaks to us. One of the addresses en Francais was impassioned (anyone could tell that) and frequently interrupted by those in the studio capable of understanding the speaker. (I presume they did). At least one feature was clear to every Radio listener—the applause.



# Recent Advances in Tuned R.F. Amplification

## Part VIII—Constructional Details

By Milo Gurney

WHILE I greatly appreciate the very complimentary interest taken in this series of articles, and now regret that I did not furnish more reference works and added types of bridge structures, I still hope that the information given has been such as will prompt many of you to dig deep into the subject, as without question, bridge structures well constructed, offer a control over every desired feature of Radio construction on and beyond all circuit theories to date. We may well expect an advance in this field in the next year or so that will be very illuminating. Nothing is impossible, something is possible, and if you feel the field is so crowded that there remains little opportunity you may as well be content to get out of line and let Gunga Din do it. For illustration, at the present time considerable interest is being shown in the air core tuned transformers and some quite commendable results have been secured.

### Air Core Transformer History

You may look on this work as a somewhat recent development, yet when I tell you that it was my pleasure to see less than two weeks ago a photograph copy of a patent application for air core transformers made in 1884, or over thirty-five years ago, it will then dawn upon you that someone has been working some few years toward their improvement. While I am not privileged to divulge the inside story at this time, yet within the next thirty

very much your duty to climb upon the roof now, while you think of it, and look the old antenna over. Also, it is equally unfair to blame old man static for much of your troubles when you openly offer him every opportunity to bother you. Hence, it is my thought that a few suggestions upon the subject may even help builders of Wheatstone bridge circuits.

There is one hard and fast ironclad rule relative to antenna construction that should be followed if possible, and that refers to its height. Never go over 30 feet or under 25 feet if you can avoid it. Why? Primarily, because old man static seldom bothers excessively at these heights. Another rule that is not quite so ironclad, but should be, is this: Receiving antennas for 200 to 550 meters should be single enamel or insulated wire and not exceed 100 feet in length, or 125 feet with lead-in included. Why? Primarily, because such a length will very materially improve the selectivity of the modern receiver you are using, as it will possess a fundamental wave length value of its own more close to the average broadcast band. Secondly, enamel or insulated wire is not subject to corrosion and offers added protection in its insulating qualities.

While it is generally known that radio frequency currents travel over the outer circumference or surface of the wire, it is still less understood apparently that, as dust, dirt and the carbon element of

telephone nickel slot machine trouble and high leakages were eliminated.

### Set Built by the Writer

In concluding my articles I have felt that many of you would be interested in visualizing methods for attaining short cuts in wiring and in layouts. I have therefore designed a receiver using the input circuit shown in figure 38, merely offering it as a suggestion. The front view, figure 41, shows a panel 7x21 with all controls in horizontal line and, while the entire assembly is panel mounted, only four screws appear upon its surface, and these have been touched up with black enamel so that they are not noticeable except upon close inspection.

speaker and automatically lights the tubes. Of greater interest, however, is figure 43, which is also a rear view, and shows all low potential leads cabled in compliance with my earlier suggestion to you.

The assembly's total depth is seven inches while the horizontal assembly is twenty inches in order that it may be used with a 7x21x3 inch cabinet and, as the entire assembly is self supporting, panel strength was of no moment, hence one-eighth stock was used. The total cost of parts, including panel and using \$7.00 transformers and \$8.00 condensers, was under \$35.00 list. Therefore, to those of you who have felt it foolish to buy the

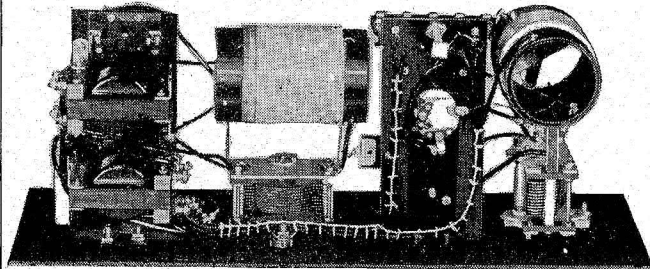


Figure 43

Figure 42 shows a rear view looking down from the top and is pictured first in order that you may visualize the schematic layout. Particular attention is called to the placement of metallic parts in their relation to the inductances, there being a full two and one-half inch separation maintained throughout the assembly. No item in the total assembly is other than standard with the exception of the two sub panels supporting the sockets, etc. All battery and line connections are removed from the face of the panel while a three spring jack controls the output to

best, let me say that I believe you too would arrive at a total cost of \$35.00.

I would be ungrateful did I not acknowledge my thanks to the many who have sent me letters of appreciation, and to several of the engineering fraternity who have so considerably let me pester them for added information. After all, this old world has so many master minds who are content to hide their light under a bushel that I hope soon for the day to come when they, in conference assembled, will establish a code of standards in order that the

(Continued on page 20)

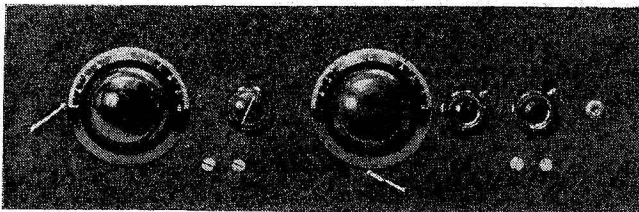


Figure 41

days I shall have a set operating which will use an even new type of inductance which will be so superior to present types as to truly create a furor. I am not the inventor of it, but I do believe in patting any fellow on the back who builds a better mouse trap and, when ready, you shall have the entire story in Radio Digest if you want it.

Several have asked whether it is possible to secure a desirable compensation without resorting to the use of true bridge structures. I think it is, although the word desirable should be used advisedly since it is doubtful whether any circuit, which will not permit of control to the point wherein incoming and outgoing impulses can be totally isolated each from the other, will be as efficient.

Circuits can and are designed, however, which prove quite satisfactory and are decided improvements over much that is now offered. Once the theory is understood there can be no reason why much better compensating mediums may not be developed for the control of regeneration.

### Antenna and Ground Important

May I, with the above, pass on to the subject of antennas and grounds, as no circuit is any better than its supply medium and it is deplorable to realize that, irrespective of the improvement in both transmitting stations and receiving apparatus, the same antenna and the same old ground that we put up two or three years ago seems good enough for 99 4/10 per cent of Radio users. This is wrong, totally wrong, and not fair to either the station, your receiver or yourself. You must not complain relative to interference and the congestion of the air until after you have done your part toward modernizing your total equipment to meet this new order of things. The horse and buggy days of Radio are over and it is

the air deposit equally upon the insulators as well as on the wire, this accumulation will, in time, be sufficient to create a high resistance path for radio frequencies. A consequent absorption to ground thus very materially decreases the efficiency of your antenna as a collecting medium. Will you not then treat your antenna insulators to a bath periodically, scrubbing them thoroughly, and I then believe you will agree that the effort repaid you well.

Upon the subject of grounds, everyone, with but surprisingly few exceptions, runs a wire to the cold water pipe and lets it go at that. While it is to be regretted that ideal grounds are quite beyond the hope of most of us, yet there is much we can do that will be of real benefit. First, your ground wire should not be smaller than No. 14, and preferably of copper, but of greater importance is the method of fastening it to the cold water pipe. If handy with tools, shut off the water, then drill and tap the pipe inserting a tapped cross plug and solder your ground to this. To those who cannot do this, my advice is then to scrape the pipe thoroughly and fasten to it a substantial ground clamp to which your ground wire is fastened. Now comes the most important part of your work: secure some tin foil, all cigar stores have it, and as soon as the ground clamp is installed, wrap it thoroughly with the tin foil. This finished you should then thoroughly tape over the tin foil and you will be possessed of a ground that others can envy. It cannot oxidize.

As I write this, I can visualize that many readers will feel such thoroughness is not required. Very well, though before you decry it let me tell you that it was only after we had learned how to make good grounds that 40 per cent of

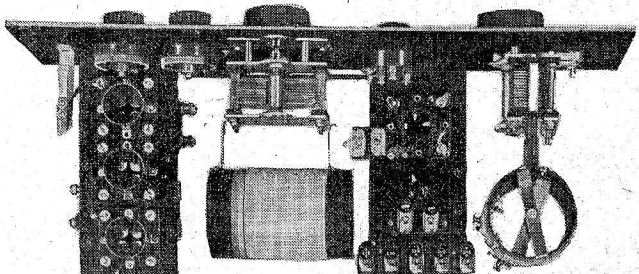


Figure 42

## No Technical Knowledge Necessary



The signature—*Shamrock-Harkness* makes it genuine.

**It's just good fun to build the Shamrock-Harkness**

**MAKE** your own set in half-a-day!

The Shamrock kit contains all parts necessary to build the sensational Shamrock-Harkness Two Tube Reflex. This set combines the best features of the leading circuits: five tube Volume and Distance—Reflex Clarity! Detailed directions, simply told, packed in each kit.

Also ask to see the improved **SHAMROCK-HARKNESS THREE-TUBE COUNTERFLEX**

The wonder set **\$39.50**

**SHAMROCK MANUFACTURING CO.**  
Dept. 35C, Market St. Newark, N. J.

# SHAMROCK

FOR SELECTIVE TUNING

The set for the masses as well as the classes

**SHAMROCK MFG. CO.**  
Dept. 35C, Market St., Newark, N. J.

Please send me a copy of "Shamrock Radio Builder's Guide Book" containing diagrams and complete instructions for building 10 sets at prices ranging from \$15 to \$50. I enclose 10 cents (U. S. stamps or coin.)

Name.....

Address.....

For best results  
**Buy only genuine Shamrock-Harkness Licensed Parts**

The Shamrock Kit contains only these genuine, guaranteed parts.

**Price \$35**

# A. B. C. Course in Radio Fundamentals

## Chapter XVII—Electromagnetic Radiation

By David Penn Moreton

**A** CLEAR understanding of the transmission of electromagnetic waves can be had if the reader understands the fundamental properties of magnetic and electric fields.

A magnetic field will be produced about a conductor in which there is an electric current. The direction of this magnetic field will be clockwise about the conductor as you look along the conductor in the direction of the current, and the strength of the field will vary in value as the value of the current changes. The presence of a magnetic field about the conductor in which there is a current can be verified by passing the conductor through a piece of cardboard, which is

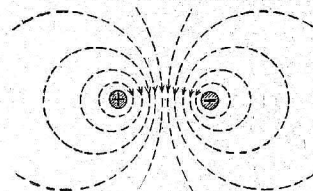


Figure 68

placed in a horizontal position, and sprinkling some fine iron filings on the board. These filings will arrange themselves in concentric circles about the conductor, if the cardboard is jarred a little.

The magnetic field surrounding two parallel conductors is shown in figure 68. The magnetic lines of the field form closed curves around the conductors whose cross sections are shown by the heavy circles. The current in the left hand conductor is toward the paper and the current in the right hand conductor is away from the paper as represented by the plus (+) and minus (-) signs respectively. The crowding of the magnetic lines between the conductors will produce a force

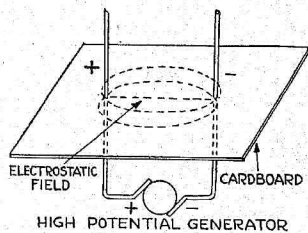


Figure 69

tending to separate the conductors. The fact that there is a force acting between the two conductors is proof of the presence of energy in the magnetic field.

**Electrostatic Field Mapping**  
If a source of high electrical pressure be connected to two wires as shown in figure 69 an electrostatic or electric field will be produced between the two conductors. The presence of this electric field can be verified by sprinkling powdered mica on the cardboard. The particles of mica will arrange themselves in more or less regular lines corresponding in direction to the direction of the electric field. A map of such an electric field is shown in figure 70. The lines originate

at one conductor and terminate on the other. There is a tension in these lines which tends to draw the two conductors together. The fact that there is a force acting between the two is proof of the presence of energy in the electric field.

By superimposing figure 68 on figure 70 a combined map of the electrostatic and electromagnetic fields is the result, as shown in figure 71. An examination of this map shows that the magnetic lines are at right angles to the electrostatic lines. The magnetic field shown in figure 68 was produced when there was a current in the conductors in opposite directions and the electrostatic field was determined when the circuit was open and under these conditions no magnetic field surrounds the conductors. The relative positions of the two fields in space is clearly shown in figure 71, but the physical relation between the two is not apparent. Suppose two electrically charged bodies A and B, be connected by two conductors CD and EF as shown in figure 72. So long as the ends D and F are kept separate, an electrostatic field exists between the charged bodies and between the two conductors. When, however, the two ends D and F are brought into contact the electrostatic lines are allowed to collapse, their two ends being drawn together, that is, the ends of the

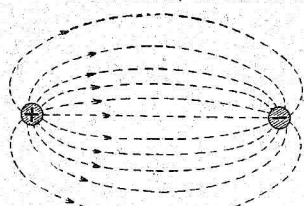


Figure 70

lines slide along the conductors toward the ends D and F. These lines terminate at electric charges and these charges move along the conductors when the ends D and F are connected.

**Magnetic and Electric Lines**

Now the movement of these charges in the conductors results in an electric current being produced in the conductors. As a result of this current in the conductors, there will be a magnetic field produced which will encircle the conductors whose plane will be at right angles to the axis of the conductors. Hence, in general, the movement of the electric lines along the conductor is accompanied by a magnetic field whose lines are at right angles to the direction of motion of the electric lines and at the same time these magnetic lines have a direction at right angles to the direction of the electric lines. Energy cannot pass from one point to another unless these two fields exist together. If a source of constant electrical pressure be connected to the points A and B, the electric lines will be developed at a constant rate and their motion will be accompanied by a magnetic field of constant strength.

The electric and magnetic fields of radiation are in space quadrature, that is, they are at right angles to each other, but they are, at any time, in phase with each other. In addition to the above relations there is a fixed relation between the magnetic and electric fields at any instant which is based upon the fact, that, in

order for the waves of electromagnetic disturbance to exist in space, the energy per cent of volume of the medium, possessed by the electric field, must be equal to the energy per cent of volume possessed by the magnetic field. The total amount of energy at any point and instant is equal to twice the energy possessed by either field. The value of this energy is changing as the strengths of the two fields change, and as a matter of fact, the energy is being transferred from one point to the next by the elastic properties of the medium in which the disturbance travels. This is similar to the

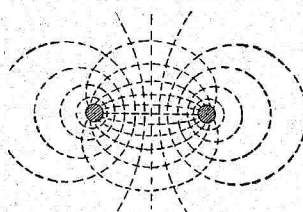


Figure 71

case of water waves, where, at any point, the potential energy per cent of volume is equal to the kinetic energy in the direction of the wave travel, and the total amount of energy is transferred from point to point within the medium, thus bringing about the condition of wave motion.

**Transformation of Energy Types**

In the case of water waves or electromagnetic waves if, at any point, some of the energy in one of the two forms, potential and kinetic for the water, and electric and magnetic for the water, and electric and magnetic for the electromagnetic waves, be withdrawn from the space wherein the wave exists, part of the energy in the other form will be immediately transformed into the former. This results in the two forms of energy still being equal, but the crests and troughs of the water waves will not be

as high as before, nor will the amplitude of the electric and magnetic field intensities be as large as before.

The reader must appreciate the fact that this phenomenon is different from that of the creation of the ordinary magnetic or electric field around the conductor, which never reaches far from the conductor with appreciable intensity, and does not represent energy permanently removed from the conductor since the variation of this field induces electromotive forces in the conductor, and thus an exchange of energy is kept up between the conductor and the field. A field of this kind is known as an "induction field" to distinguish it from the "radiating field" in which we are more vitally interested.

In the case of the "radiating field," at any point such as P (see figure 73) the magnetic field would be acting along the line PC, and the electric field along the line PD at right angles to PC, while the disturbance would travel to the right and at right angles to both the magnetic and electric fields. These fields will both change in value and in direction, in accordance with the current in the conductor producing the disturbance.

At some point, such as P<sub>1</sub>, the disturbance will arrive a little later than at P, which results in the fields at P and P<sub>1</sub> being out of phase. This difference in

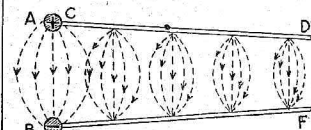


Figure 72

phase will depend upon the distance between the two points, the frequency of the wave and the velocity at which it travels.

**Relations of Wave Components**

Let us consider the magnetic field, which may be represented by a curve as shown in figure 74 and applies to a part of the water waves (Continued on page 20)

## MAGNATRONS

**C**LEAR sailing with MAGNATRONS! Summer or winter, spring or fall, you can bank on MAGNATRONS. The excellence of these tubes helps in a large measure to overcome the radio disadvantages of summer.

Good dealers everywhere sell MAGNATRONS in 3 types—the DC-201A and the 199 with large or miniature base. All types \$3.

CONNWEY ELECTRIC LABORATORIES  
Magnatron Building Hoboken, N. J.

## That Very Natural Tone

of the Bristol Loud Speaker is not due to chance, but to a long-time experience in the manufacture of finely-adjusted scientific instruments.

For over 36 years The Bristol Company has been manufacturing Bristol's Recording Instruments—which measure and record the minute changes in heat, cold, humidity, electrical current, and numerous other properties.

That this experience and factory fitness is reflected in the sweet tone of the Bristol Loud Speaker is a very natural thing.

## BRISTOL AUDIOPHONE Loud Speaker

For \$25 and \$30 you can get a Bristol Speaker; and there are others as low as \$12.50. Ask your dealer to send one out. Write us for Folder No. AY-3022, telling why the Bristol is such a delight to the ear.

THE BRISTOL COMPANY, WATERBURY, CONN.



# Portable and Phonograph Super-Heterodyne

## Part II—Assembly and Wiring

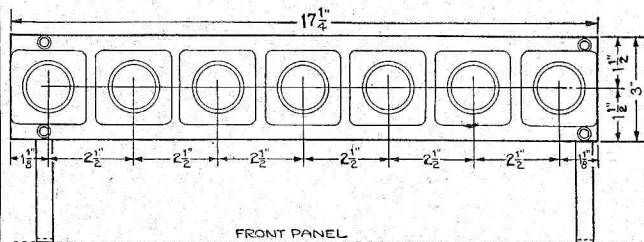
By John G. Ryan

**P**RESUMING that the reader has all of the parts specified in the list published with last week's article we are now ready to drill the panel and assemble the various units. The panel drilling diagram is given herewith, as is the diagram for the tube shelf.

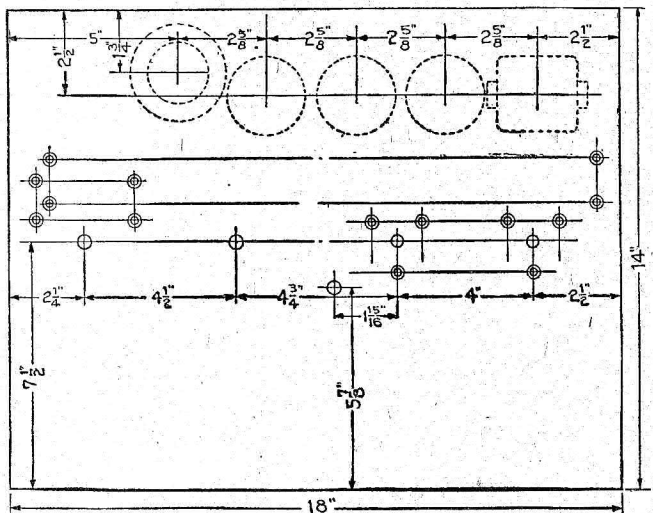
The best way to proceed would be to cut a piece of paper 18" x 14" to represent the front panel. Lay this flat on the table so that the parts can be moved around on it to fit. The center points given in the layout should be marked on the piece of paper and the various parts then placed on the paper in the position in which they will later be mounted. Since most of the

mark through the mounting holes on to the paper and the paper can then be used as a drilling template when center-punching the panel. In the drilling layout it will be noted that there are four large holes on a horizontal line about midway of the panel height. The two holes to the left are for the shafts of the variable condensers while the two holes to the right are for the potentiometer and rheostat.

The condensers should be placed in their proper position on the piece of paper and the brackets which will support the tube shelf can then be moved about on the paper so they will not interfere with the



FRONT PANEL  
Tube Shelf Layout



Front Panel Layout

kits and rheostats are smaller than those used by the writer, the reader should have no difficulty getting the various units to go in their proper place without touching. No center point is given for the oscillator coupler but  $3\frac{1}{2}$ " is allowed at the upper left hand corner of the panel for this unit. The filter transformer which comes with your kit may not take the form of the one shown but there will be plenty of room for it.

### Use of Paper as Template

With all of the parts in the upper row in their proper places, take a pencil and

condensers. They should be so placed that the upper surface of the tube shelf will be  $3\frac{3}{8}$ " from the upper edge of the panel. The height of a 199 tube in the average socket is  $3\frac{3}{8}$ " from the surface on which the socket rests. The approximate position of the bracket holes is shown, but without dimensions. Since the tube shelf is 17" long the outer edges of the brackets will be 17" apart.

The type of oscillator coupler and filter transformer shown in the photographs, two much smaller brackets about 2" in depth are necessary, but if these two units are built on the style of intermediate transformers they can be secured directly to the front panel in the same manner as the intermediates and the audio transformer. The comparatively large hole in the center of the panel, and  $1\frac{1}{2}$ " below the condenser shaft holes, is for the filament switch. No holes for the screws which fasten the brackets for the lower shelf are shown as each builder will have his own ideas as to brackets or those available in different communities will vary in both size and design.

### Tube Socket Shelf

The way in which this shelf was mounted by the writer is clearly shown in the photographs, however. The layout for the tube shelf is correct for sockets measuring  $2\frac{1}{4}$ " on each side. If your sockets are a little less than  $2\frac{1}{4}$ " there will be a little more space between each one. The idea is to get the seven sockets on the shelf and spaced equally apart with the outer edges of the end sockets flush with the ends of the shelf. Since the shelf is 3" wide and the brackets are  $1\frac{1}{2}$ " deep, there will be a distance of 3" or  $3\frac{1}{8}$ " between the front edge of the tube shelf and the back surface of the front panel.

It will be noted that the brackets supporting the tube shelf have not been shown the same distance from the two ends of the shelf. It happened that with the kit used by the writer it was necessary to place one of the smaller brackets, which is used to support the oscillator coupler, outside of the left bracket supporting the tube shelf, which accounts for the fact that the left bracket is secured to the shelf considerably farther from the edge than is the right bracket.

### Drilling from Layout

Once the location of the various parts has been decided upon, and the mounting holes marked on the surface of the paper, the paper can be clamped or pasted to the panel and the mounting holes punched through. The drilling should be done from the front so that any tendency to chip will occur at the rear surface of the panel.

After mounting holes have been ac-

curately marked, the mounting of the various parts will be the easiest part of the work. The writer should have mentioned before that, when maneuvering the intermediate frequency transformers on the paper, they should be so turned that the grid binding post on each one will be towards the bottom which will later bring it within an inch of the binding post on the socket to which it is to be connected.

Connecting the filament terminals of the various sockets will be found very easy, as a single piece of spaghetti covered bus bar can be laid along the front edges of the sockets and another can be laid along the rear edges and it is only necessary to solder short  $\frac{3}{8}$ " pieces of bus bar on to the soldering lug on each filament terminal on the socket. The bus bar along the front edges of the sockets should now be connected to the rheostat and the other side of the rheostat should be connected to the potentiometer and also to the filament switch. The rear piece of bus bar connecting the filaments should now be connected to the other side of the potentiometer. The grid leak and condenser clips are mounted on the under side of the tube shelf close to the front edge directly below the second and sixth tube sockets. In this position they are readily accessible for changing grid leaks, yet are not in the way and out of sight.

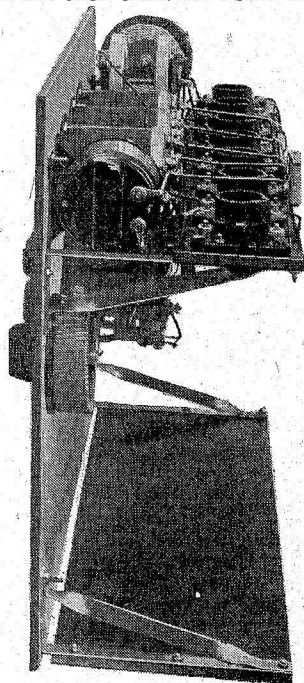
Since the oscillator coupler is at the

left end of the row, the oscillator condenser directly below it and the oscillator tube socket number one at the left on the tube shelf, the oscillator leads will be conveniently short. If the grid binding posts on the intermediate transformers are mounted at the bottom, the plate binding posts will, of course, be at the top, and pieces of bus bar about  $2\frac{3}{4}$ " long are used to connect the plate binding posts to the plate terminals of the sockets. These are clearly shown in the end view presented with this article.

Since the writer used a filament switch of the jack type, and mounted the switch with the frame uppermost, the frame formed a shelf on which the C battery fitted nicely. The plus end of the battery is at the bottom and a wire connects it to the center terminal of the potentiometer. The negative end of the battery is connected to the grid return lead common to three transformers. The grid return from the audio frequency transformer is tapped in so that it will be three volts negative.

The .5 mfd. bypass condenser is hung on the wiring directly behind the potentiometer and one side is connected to the plus filament bus bar at the point where it connects to the potentiometer, while the other side is connected to the point where

(Continued on page 20)



View from Right End of Completed Set, Showing Plate Circuit Wiring

### Quality Parts Matched for Perfect Teamwork

Your "pet" hook-up needs first quality parts—perfectly matched—to give you real radio.

Every Federal Standard Radio Part is designed, made, matched and guaranteed by Federal. That is why you find Federal parts in all the better hook-ups—that is why you should insist on Federal parts when purchasing.

FEDERAL TELEPHONE MANUFACTURING CORP.  
Buffalo, N. Y.



# Federal

Standard RADIO Products

**PORTABLE SUPER-HET**

(Continued from page 19)

the three grid returns join together. Thus, this condenser bypasses both the C battery and the potentiometer.

The position of the .006 mfd. fixed condenser, which bypasses in the plate circuit of the second detector tube, should be clearly seen from the photograph of the rear which was presented with the first article. Placed directly against the socket, which is number 6 from the left, it provides the shortest possible bypass from the plate to the filament terminal of the socket. The .002 mfd. condenser is hung on the wiring in the space between the front edge of the tube shelf and the back of the panel.

Although both sides of the filter coupler are shown shunted with a fixed condenser in the wiring diagram, this is the case on very few of the filter couplers which are part of the super-heterodyne kits on the market. With that one point in exception the wiring diagram, as shown, is correct for most of the kits available. The dealer from whom you purchase apparatus will be glad to point out any minor differences between the diagram which accompanies the kit and the diagram provided with the first article.

The mounting screws which hold the intermediate transformers and the audio transformer to the panel, provide a ready means of grounding the cases on the transformers and their cores. A piece of wire can be slipped under one of the mounting screws of each transformer and extended right across the panel. It should then be bent at a right angle and connected to any convenient point on the negative filament circuit.

A long flexible lead is connected to the plate terminal of the last tube socket and connected to the loud speaker unit, the mounting of which will be shown in the third article. Admittedly there are a number of details which have had to be sketched over and left to the reader's own judgment but this is necessary since the kits on the market all vary in construction detail, as do also the variable condensers on the market. However, the reader who has constructed one or two sets before, and is even the least bit familiar with wiring diagrams and Radio symbols, will have little trouble with this. (The construction of a loud speaker horn for use with this set, and some suggestions for mounting not only the loud speaker in the set but also the set in the cabinet, will be described in the third article. Mr. Ryan will complete the series next week, including testing instructions and operating suggestions.—Editor's Note.)

**A. B. C. RADIO COURSE**

(Continued from page 18)

ticular distance from the conductor and a particular instant of time. A little later the field would be represented by the curve B, that is the intensity at every point in space has changed from a value

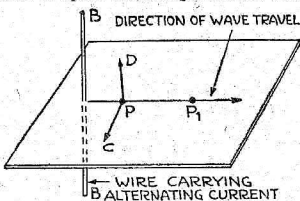


Figure 73

corresponding to curve A, to a value corresponding to the curve B. The wave has shifted to the right by an amount equal to the distance C. Additional curves

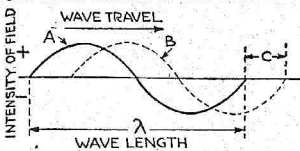


Figure 74

may be drawn for successive points along the line of travel and different intervals of time and finally the magnetic field has completed a cycle and starts to repeat itself.

If we let  $\lambda$  equal the wave length in centimeters,  $v$  equal the velocity of travel in centimeters per second, and  $f$  equal the frequency of the field in cycles per second, then the time for one complete cycle will

be equal to  $\frac{1}{f}$  and the wave length  $\lambda$  will

be equal to  $\frac{1}{f} v$ , and the velocity  $v$  will be equal to  $\lambda f$ , which is the fundamental relation for any wave transmission.

The velocity at which electromagnetic waves are transmitted is equal to the velocity of light when the wave is being transmitted through air, but in general we have the following relations:

$v$ =the velocity of light in a vacuum.

$v$ =velocity of transmission of the wave in any uniform medium.  
 $\mu$ =magnetic permeability of the medium, that is, its ability to conduct magnetic lines in comparison to air.  
 $k$ =specific inductive capacity of the medium.

$$\text{Then } v = \frac{v}{\sqrt{\mu k}}$$

Now for air  $\mu=1$  and  $k=1$ , then  $v=V$ . The above expression for  $v$  neglects all losses occurring in the medium, such as hysteresis and dielectric losses. As the wave travels outward, some of the energy is absorbed by the medium in which the wave is being transmitted and, as a result of these losses, a distance is finally reached where practically no more energy is available and the disturbance ceases to be transmitted with a measurable intensity any further. The distance over which a certain amount of energy may be transmitted through air is greater than through solid substances or even liquid, due to the fact that the losses are greater than in air.

Various types of electromagnetic waves may be sent out by a radiating or transmitting station depending upon the kind of current used to produce the waves. There are two systems of Radio transmission in use at the present time which are known by the two different kinds of waves. These are the "undamped wave" and the "damped wave" systems and they will be discussed more fully in the next chapter.

(From Professor Moreton's next article you will readily understand why spark transmitters, and many types of tube stations, are hard to find here. These can be either of the two types mentioned, but "damped" transmission is very broad.—Editor's Note.)

**TUNED R.F. ADVANCES**

(Continued from page 17)

most innocent customer may purchase Radio parts with an assurance of their merit or demerit. For illustration, I desire sockets graded as A, B and C and priced accordingly. I do not want my neighbor to read a glaring "full-of-untruth" advertisement about coast to coast reception, or double compound low loss this and that, and then curse Radio because he cannot get California or his money back. All I ask to see is about a dozen manufacturers who believe the ultimate purchaser is entitled to like their products well enough to buy again, for after all "merchandising, whether it be in Radio or any other line, is merely the process of selling merchandise that will not come back to customers who will and, if this be strictly adhered to, it then becomes successful merchandising."

**The Reader's View**

Down With the "Air Hogs"

Have been a regular reader of your paper for a long time and think it the very best of all Radio papers—and I really do admire the way you are going after the "Air Hogs" near Chicago.

The sooner the dealers and manufacturers realize the conditions, the better it will be for all of us. I am sure every person in Chicago who enjoys Radio is with you.

It is getting time to clean house. Keep it up, thank you, and if I can be of any assistance in any way I would be glad to help.—F. E. Smith, Chicago.

We Are Not Coercing

First of all as a qualification as a critic I travel from coast to coast by auto, and for three years have carried a set.

In only two cities have I had real trouble with interference, although with less selective sets I might have had more trouble. Philadelphia is bad mainly because of WLIT, WFI and WIP having too broad waves, and another reason is their incessant operation.

The other city is San Francisco where KFO "hogs" the air from early 'til late.

But why leave it all up to Hoover? When a station has to operate every day and night in the week because it has to be on a paying basis, why should Radio Digest feature their programs with free advertising? That is what I cannot understand. I believe Radio Digest has the standing and backing to omit such stations. That the omission, at least to the extent of showing detailed programs would be appreciated, goes without saying.

Again, if I may ask, why give publicity of free detailed programs to toll stations unless you are paid to publish them?

Listing only stations in the Radio Digest which are off the air at least one night a week will do more to stop bad practices than all the petitions to Hoover you can ever collect.

Think over dropping "Air Hogs" from your detailed programs and replacing them with clean, nice, little stations in detail. Then if you don't exercise a mighty influence in inducing some of them to have one silent night. At least you would not be abetting what you say you are trying to stop.—F. M. Wallace, San Francisco, Calif.

**The NEW Radio Book**



**How to understand radio, assemble circuits, improve reception, operate sets,**

**EVERY** phase of Radio reception gathered into one book at last! Explanation of elementary principles, directions for constructing parts, detailed how-to-build articles for the assembly of sets, operating directions on popular manufactured outfits.

Haven't you often wondered what all the spirals, wriggly lines and zig-zag lines were about on diagrams? A big chart shows you a picture of the part as you see it and, beside the picture, the symbol used in diagrams. Other articles show clearly just what happens within the mysterious little vacuum tubes that glow hour after hour within your set, apparently without change, yet pass every note of a jazz orchestra or soprano.

Antennas, for whose erection there are seemingly no rules, are covered fully; the reason for a long wire in some locations and a short one in others, is readily grasped by anyone. Crystal sets, one tubers, two tube reflexes, three tube regenerative and reflex outfits, four tube R. F. and neutrodyne, five tube assemblies—all types are presented up to the nine tube "super," king of the air.

**For the Man That Bought His Set**

For the non-technically inclined there is a two-color broadcast map of the country, operating schedules of all the leading stations, call letters and power rating of every station on the air, suggestions for the care of batteries and tubes.

No matter what type of receiver you own, there are dozens of valuable suggestions on tuning, trouble shooting and operating. Your head receivers, loud speaker, antenna and certain parts within the set, require frequent cleaning, adjusting and care. Interference and its remedies are factors you should understand even though you care nothing about "what makes it go."

Compiled by the technical staff of Radio Digest, it represents the high lights of the past twelve months in the Radio field. All this data is indexed for ready reference and logically arranged. Only a few thousand have been printed and this offer will stand for a limited time. The only book of its kind and is FREE with one year's subscription to Radio Digest. This offer good only on subscriptions sent directly to this office, not through agents or agencies.

Subscription Department

**Radio Digest**

510 N. Dearborn St., Chicago, Ill.

*free*

Radio Digest 7-18-25  
 Enclosed is \$5.00 in ( ) M. O., ( ) Check,  
 ( ) Currency, for which enter my subscription  
 to Radio Digest for one year and send me the  
 book, "Radio Receivers."  
 Name .....  
 Address .....  
 .....  
 (Type or Print Clearly)



# Short Wave Receiver Not Difficult

## Average Experimenter Has Enough Parts Now

Many experimenters have been putting off the building of a short wave receiver for some time because they thought that such a set was difficult to construct and required too much apparatus.

### WORKSHOP KINKS EARN A DOLLAR—

**T**HERE are many little kinks worked out at home that would aid your fellow Radio worker if only he knew about them. There are new hook-ups, new ways of making parts and various unique ways of operating sets that are discovered every day. Radio Digest is very much interested in obtaining such material. Send them in with full details, including stamped envelope, so rejected copy may be returned. The work must be entirely original, not copied.

RADIO KINKS DEPARTMENT  
Radio Digest,  
510 North Dearborn St., Chicago

The hook-up that I am submitting is very simple as may be seen by the diagram. Most of the apparatus can be found lying around the average experimenter's shop. The parts needed are: one .001 mfd. variable condenser, one .0005 mfd. variable condenser, one low loss coil, one variable grid leak, tube, socket, rheostat and batteries.

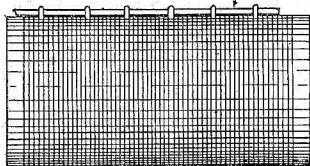
The low loss coil consists of 17 feet of No. 24 doc. wire wound in a spider web fashion as shown. After the coil is wound, insulating cement is applied and the coil removed from the form by pulling out the pegs.

In hooking up the set, care must be

### Convenient Taps for Coils

In winding a coil for taps run on the number of turns to the first tap, then place a strip of thin wood 1/4 inch wide under the wire. Fruit basket material makes good strips. When the place for

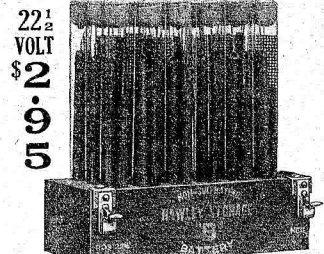
WOODEN STRIP 1/4" WIDE



the second tap is reached push the strip of wood through to catch the turn of wire, and so on until the coil is complete. A little binding placed on the wire over the wood and allowed to dry aids in removing the insulation for soldering the tap lead to the coil.—George McCracken, New Castle, Pa.

### Night Range of Static

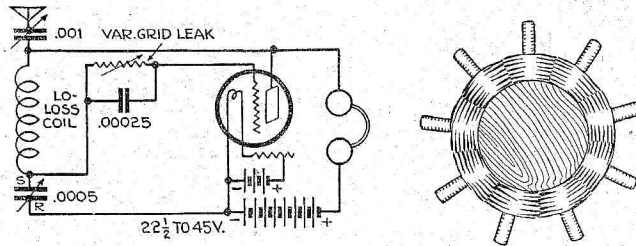
Static may seem worse at night than during the day, through the summer months because the range for both radio and static is about five times as great late at night as during the afternoon. Thus in the afternoon the set may be picking up static over a radius only 200 miles in extent, while at night the area over which such disturbances are heard may have a radius of 1,000 miles.



**22 1/2 VOLT \$2.95**

**K's OUT**—Complete everlasting ready to run non-seal, non-sulphating 22 1/2-volt rechargeable "K" storage battery, \$2.95. Includes chemical. Does not lose its charge standing idle. Special 2-22 1/2 volts (45 volts) \$5.25; 40 volts \$10.00; 112 1/2 volts \$12.99; 135 volts \$14.75; 157 1/2 volts \$16.80. Nearly 3 years sold on a non-reed tape. 30-day trial offer, with complete refund if not thoroughly satisfied. Further guaranteed 2 years. Knock-down kits at still greater savings. Complete ready to run "K" battery charger \$2.75. Sample call for. Order direct—send no money—simply pay expressman its cost on delivery, or write for my free literature, testimonials and guarantee. Same day shipments. My large 30-page radio goods catalogue 10c. B. D. Smith, 31 Washington Ave., Danbury, Conn.

## HOOK-UP FOR SHORT WAVE SET



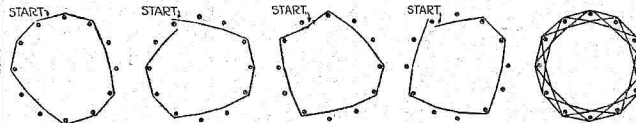
taken in attaching the rotor plates of the .0005 mfd. condenser to the ground. This eliminates body capacity to a great extent.

With this set, using one type UV-199 tube, the author has heard many stations on and below 100 meters. Station 2XK

(WGY) testing on phone on 100 meters came in with fine volume and many amateurs on 80 meters have been logged. Considerable work is being done on short waves now and it would pay any experimenter to build one of these short wave sets.—Lee H. Bolen, Hamilton, Mont.

### Puzzle in Coil Winding

As a matter of diversion the winding of a low loss coil presents a good puzzle. The object of this puzzle is to draw the figure as shown without lifting the pencil



from the paper, reversing direction, or going over a line the second time. The answer is shown.—M. S. Smith, Topeka, Kansas.

### Use of Spaghetti Okeh

Spaghetti insulation is not as detrimental as some claim. In fact, it would be very difficult to prove, other than theoretically, that there is any difference between operation when using it and omitting it. It has these advantages; it can be used in different colors to identify high and low potential and grid leads; and protects against accidental short circuits or grounds.

Joints of an antenna should be first soldered and then wrapped with several layers of tinfoil and then a layer of waterproof tape.



# Oh boy!

## KESTER

Rosin Core

### Radio SOLDER

Sure 'is Safe and Simple

APPROVED BY RADIO ENGINEERS  
A Genuine Solder

CHICAGO SOLDER COMPANY  
4236 Wrightwood Ave., Chicago, U.S.A.

Originators and World's Largest Manufacturers of Self Fluxing Solder  
Your Dealer Can Supply You

## The "Goode" Two-o-One

# A

Le Ton d'argent

Guaranteed

BY MAIL ONLY

**\$1.89**

Postpaid

### QUARTER AMPERE AMPLIFIER-DETECTOR RADIO TUBE

GUARANTEED SATISFACTORY

All "GOODE" Tubes Sold Direct to the Consumer—No Dealer Profits

ONE—"Goode" Detector-Amplifier..... **\$1.89**

THREE—"Goode" Detector-Amplifiers..... **5.00**

(All postage prepaid)

The "Goode" Two-o-One A Tube amplifies or detects. It is a quarter ampere, five volts, standard base silvered tube.

Send express or postal money order—New York draft—or personal check to—

### The Goode Tube Corporation

Incorporated  
Owensboro (Dept. A) Kentucky

### Leaving Grid Leak Setting Alone

Despite experiences seemingly to the contrary, a variable grid leak or one using cartridges should be left alone once the correct adjustment has been found. Since most sets now use hard tubes as detectors, this matter of adjustment is not as critical as it once was, anyway. Keep the A battery charged and do not attempt to force the operation on weak B batteries and there will be no need to play with the grid leak.

### Where Radio Frequency Helps

Radio frequency amplification will increase the range, but will hardly affect the volume on programs within 100 miles. Beyond that distance it does. Audio frequency amplification has no effect on the range but is used entirely to increase the volume.

## What becomes of the bass notes in your set?

While the better transformers amplify quite evenly over the entire upper and middle registers of the musical scale, from about 80 cycles downward there is a pronounced loss of amplification, as indicated above. Power transformers begin to drop off in amplification even higher on the scale with the result that lowest notes disappear entirely.

There is no variation in amplification over the entire range of musical frequencies with Thordarson Autoformers. No note is too low—no note is too high to be lost by the Autoformer. In addition there are three other advantages.

### Four Great Improvements!

**FULL** amplification of those bass notes hitherto largely "lost"! Greater clarity on all signals! Improved reception of distant programs! Better volume control!

These are the four advantages achieved by this latest Thordarson development—the Autoformer. Thordarson has succeeded in utilizing, for the benefit of your radio set, the same principle used in the line amplifiers adopted by the more recent high-powered broadcasting stations. The excellent quality of these stations (due to perfect amplification) offers conclusive proof of Autoformer effectiveness.

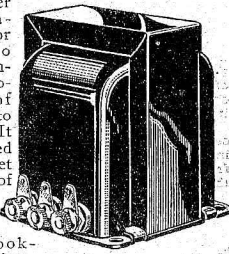
Unconditionally Guaranteed



Trade-Mark Registered

### All Frequency Amplifier

An autoformer amplification is for those who seek the finest reproduction of programs to be had. It may be used with any set in place of the regular audio transformer hook-up. Full directions, with diagrams, for building a Thordarson Autoformer Amplifier are supplied with each instrument. Or



Write for the Autoformer Hook-up Bulletin—Just Out!

THORDARSON ELECTRIC MANUFACTURING CO  
WORLD'S OLDEST AND LARGEST EXCLUSIVE TRANSFORMER MAKERS  
Chicago, U.S.A.

# Questions and Answers

### Receiving Range

(14090) AS, Akron, Colo.  
 Q.—I happened to pick up an old copy of Radio Digest, April 18, 1925, and found a hook-up in the Q. & A. Department that interested me. I would like to ask a few questions about it. Could two audio frequency transformers, ratio three to one, be used in this set and if not what ratio is better? Using UV-199 tubes what would be the voltage of A and B batteries? What is the average receiving range on loud speaker in this set.

A.—Two audio transformers of three to one ratio can certainly be used in the hook-up on the Q. & A. page of our April 18 issue. Using 199 tubes the A battery voltage should be 4½, the B battery voltage should be 45 on the detector plate and 90 on the amplifier plates while the C battery should have 1½ volts. The tuning unit should be either a Davenport, made by Davenport Radio Laboratory at Davenport, Iowa, an Uncle Sam tuning unit or an Ambassador unit, both of which are widely advertised. It would be impossible to state the receiving range, as given a good location in winter time one might get both coasts while given a poor location in summer time the only station you might hear would be KOA at Denver, Colo.

### Tube Current Draw

(14100) B & L, Chillicothe, Texas.  
 Q.—Please settle this argument. My partner, who is an electrician, says that there is just the same current used no matter where you set the rheostat of the battery control on a Radio. Please decide this for us as we agreed to leave it to you.

A.—The discussion cannot be settled on the phrase "Just the same current used." The same amount of current is used by the tube at all times but the amount of current drawn from the batteries will vary with every setting of the rheostat. This can be readily seen by the application of Ohm's law. Current equal voltage over resistance, and since the resistance of a 199 filament is 50 ohms and the voltage applied by three dry cells is 4½, the current drawn will be .09 amperes. If a 30-ohm resistance is connected in series with the filament and all of the resistance is in the total resistance becomes 80, and if 4.5 is divided by 80 it shows that the current draw is .05 amperes. When all of the resistance is in, the tube does not get enough current since it requires .06 amperes, but if all of the resistance is out it gets .09 amperes, which is too much. It is the function of the rheostat to control the amount of current through it to approximately .055 or .06, at which current draw the tube will function best.

### "Recognized" Manufacturers

(14099) JEN, North Platte, Nebr.  
 Q.—I would like the name of some Radio publication or some kind of a list from which I can obtain the names of different standard and recognized Radio manufacturers. I notice a new one in your issue of June 30, the Sun Manufacturing company of Louisville. I think I have also noticed in your paper the Amerex of New York and the Randolph corp. of Chicago. What I want is a list of the recognized concerns and also a list of all other reliable manufacturers.

A.—You ask for the impossible. There is no individual or organization that could determine whether a Radio manufacturer was "recognized" or not, as there are many large manufacturers guilty of sharp practice in their dealings with the

public, and also of errors in design and construction, while there are many smaller concerns, not so widely known, whose integrity is very high and whose product is high in efficiency. As to advertisers in Radio Digest we wish to advise that the credit standing and financial rating of all advertisers is looked into carefully before their product is permitted in our columns, and they must also give satisfaction to all purchasers of apparatus, and uphold their guarantees and their good faith with the public, or their advertising is eliminated. It is not exaggerating to state that this policy of ours has cost us close to \$200,000 in the last few years but we have kept the faith of our readers, which has resulted in our large circulation.

### Bridge Kits to Come

(14082) EES, Blanton, Fla.  
 Q.—I am interested in the Wheatstone bridge now being described by Mr. Gurney in Radio Digest. I want to purchase one of these bridges to be installed in my 5 tube tuned radio frequency receiver. Will you kindly tell me where I can purchase one or who I can get to build one for me?

A.—It is plain that you have not carefully read the article by Milo Gurney as it was certainly clearly stated that the circuits under discussion are based on the idea of a Wheatstone bridge which is a device used by the electrical engineer for measuring apparatus. There is no bridge that one can purchase to put in a receiver, as a receiver itself, and all of the parts used, must be designed especially for that purpose and on the principle of balancing out an undesired capacity by means of a bridge principle. Mr. Gurney is now designing a kit for a local manufacturer so that coils and other apparatus necessary will shortly be on the market with which builders can construct bridge circuits.

### Radiola Super

(14097) FBM, Albuquerque, N. Mex.  
 Q.—I wonder if you will answer a few questions for me. I have a Radiola Super and it seems to be using more A battery than usual and does not seem as sensitive as it used to be even though allowance has been made for summer time and interference. I depend on WQAI, KOA and KFI, although WQAI comes in somewhat inferior to the other two. Denver always fades so badly that we cannot enjoy them any more.

A.—Relative to the Radiola Super you state that it seems to be using more A battery than usual. We presume by this you mean that the rheostat has to be turned over a little further before full volume is obtained. Since the dry batteries which supply A battery current will gradually wear down, this is only natural and very soon you will have to turn the rheostat clear over to get signals at all. When that point is reached you will have to get new A batteries. Then, too, there

Mer to build radio sets in spare time. Leon Lambert, Wichita, Kansas.



**Static**  
 "HOW TO KEEP STATIC OUT OF YOUR RADIO"  
 New Copyrighted Plans, \$1.00  
**LEON LAMBERT**  
 WICHITA, KANSAS

**Buy Tubes by Name**



**WD-11 Radiotron**

is the probability that your B batteries are also gradually going down and it would be necessary to use a higher rheostat setting to obtain equal results, if this is the case. Either of these points will reduce the volume and a depreciating battery will also produce the fading effect which you mention. It is also probable that your 199 tubes have depreciated to some extent and it will be necessary to reactivate them or get new ones. The Jefferson Tube Rejuvenator is a reactivating device which throws about 8 to 10 volts onto the filaments for a short period of time and then puts 5 to 6 volts on the filaments for several minutes. This will boil out the filament and bring a new layer of thorium to the surface and the tubes will be restored to full strength for a useful life of about 60 per cent as long as the useful life obtained when new.

### Four Filter Super Trouble

(14085) MS, Elm Grove, W. Va.  
 Having built the Four Filter Super as shown in your articles in Radio Digest, I wish some further advice. I used 199 tubes and sockets; all material is of good quality. I used the 3-inch tube oscillator wound as per instructions and it is the part that does not work. The oscillator condenser can be turned all in or all out, and not make any difference in reception. I can also take the oscillator tube out of the socket and it does not make much of a difference. The antenna condenser tunes very sharp, cutting out KDKA on one-half of one division on vernier dial.

I first connected everything as per your hook-up, but all I could get was a sharp whistle. Then I tried 45 volts instead of 90 volts and it began to work. Then I put 90 volts on the oscillator and audio tubes, which stopped the whistling but did not improve the oscillator control. The midget condensers are all about the same position for best reception; the potentiometer is very close. It is 400 ohms, but I can't move it more than ¼ inch of the circumference. The regeneration control seems to work alright. My tubes are all new and tested; also tested in a Radiola Super. I can get KDKA on the loop or outside antenna. WCAE I can just hear on the outside antenna. I hope from the above you can give me some information that will clear up my trouble.

As I have been watching all the popular magazines for two years for just such an article and yours was the only one that I ever found that the author did not have some particular part to sell you before it would work, and as your instructions were so clear I feel that I have overlooked something. I have seven tubes and can use the oscillator in second audio with good results on KDKA.

A.—Relative to the trouble you have of not getting the oscillator to oscillate properly, there is not much that we can say except that there is a broken lead somewhere or one of your socket springs is not making contact with the tube. When two coils of the proper size are connected across a variable condenser and the outer end of one is connected to the plate of the tube while the outer end of the other is connected to the grid, you are certainly going to get oscillation with 45 volts on the plate. Possibly your bypass condenser has become shorted and this point should be looked into. Your tube will function satisfactorily as an audio frequency amplifier but that does not indicate that it would make a good oscillator since practically any tube will amplify at audio frequencies. You will invest in one more tube so that you have a little more flexibility in switching them around in the sockets, and examine not only the connections but the socket springs, we are sure that the difficulty will come to light. The articles and also the diagrams were correct in every detail.

### Bubbling of Storage Batteries

A moderate boiling or bubbling at the surface of the electrolyte after a storage A battery has been on charge some time is nothing to be alarmed over. This is a natural part of the change in chemical content of the battery toward the end of the charge. The boiling should not be too violent, so that large drops are thrown out, but a fine spray is nothing to fear.

Salesmen calling on radio dealers wanted to handle Radio Tubes as a side line. Thoria Tube Company, Dept "D," Middletown, Ohio.

### PATENT ATTORNEYS

PATENTS. Booklet free. Highest references. Best results. WATSON E. COLEMAN, Patent Lawyer, 644 G Street, Washington, D. C.



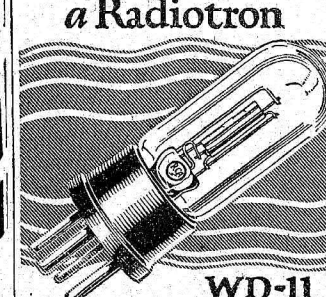
**World RADIO STORAGE BATTERIES**

22 Cells \$3.25  
**RADIO Storage "B" Battery**  
 Lasts Indefinitely—Pays for Itself

SEND NO MONEY wanted and we will ship day pay express unless otherwise specified. 5 per cent discount for cash with order. **World Battery Co.**

1219 So. Wabash Ave., Dept. 76, Chicago, Ill.

*It isn't a genuine WD-11 unless it's a Radiotron*



**WD-11 Radiotron**



**The Traffic Cop of the Air**

Make your set selective—separate the interfering stations by simply putting the Traffic Cop on guard. The Ferbend Wave Trap will tune out interfering stations, no matter how troublesome. Never reduces, but nearly always increases volume. Add a Ferbend Wave Trap to your set and "police" your reception. Regulate the traffic by the suit. Your statements regarding the "Wave Trap" are true. It is a "Wave Trap" with a difference. If this note can help you to produce the "Wave Trap" to others, please use it. (Signed) C. Patterson.

New Orleans, Louisiana, Gentlemen: The "Wave Trap" made a Marvel of a radio. I used it in my set and it will bring you a new birth. If this note can help you to produce the "Wave Trap" to others, please use it. (Signed) C. Patterson.

Designed and manufactured complete by us after years of careful experimenting. It is not to be compared with imitations, hastily assembled from ordinary parts. Price is \$8.50. Shipment is made Parcel Post C. O. D. plus postage, or post paid on receipt of price. Order today.

**FERBEND ELECTRIC CO.**  
 17 E. So. Water St., Chicago, Ill.  
 Send for FREE Booklet

**Apex Super 5**

This highly efficient tuned radio frequency receiver is the most advanced in design and construction. It is an instrument that meets every critical expectation of the seasoned radio enthusiast.

Buy the Apex Super 5. You will have a radio receiver that brings in distant stations clear and distinct. Select the station you desire in your log book, turn the marvelous Apex Vernier Dials to that number, and there you are! Perfect reception. No greater selectivity can be had than is easily obtained with the Apex Super Five.

Housed in a highly finished walnut cabinet, complete with nut Multi-plug Battery Case. All settings highly graduated. Sells for \$25 complete excepting accessories.

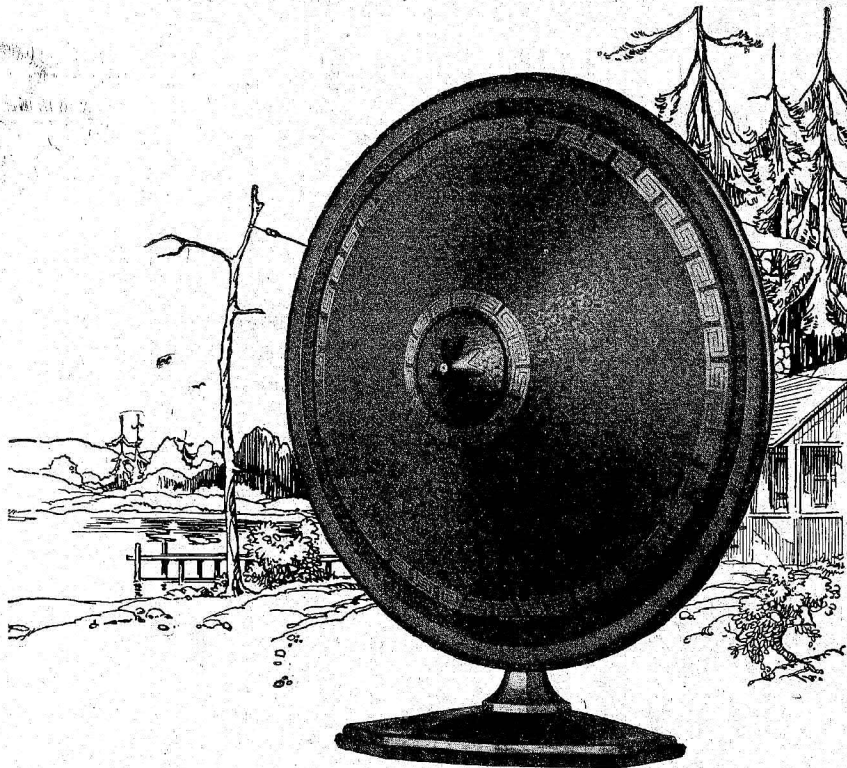
At All Good Dealers  
**Apex Elec. Mfg. Co.**  
 1410 W. 59th St.  
 Dept. 705-A  
 Chicago

**on the dot**









# The Crosley Musicone

a startling improvement in looks and tone over loud-speakers  
Already replacing thousands

In camp or home, this remarkable development of radio reproduction will greatly increase the delight in radio.

It is a new idea. It diffuses the sound. Upon hearing it for the first time one is at loss to locate the source of the music. Its perfection of reproduction is uncannily real.

Its price, like all Crosley products, is very low because of the half-million production plans under which it is being built. Hear it at all Crosley dealers now.

*Crosley owns and operates station W.L.W., Cincinnati, the first remotely controlled super-power broadcasting station.*

*Crosley manufactures receiving sets which are licensed under Armstrong U. S. Patent No. 1,113,149, and priced from \$14.50 to \$65, without accessories.*

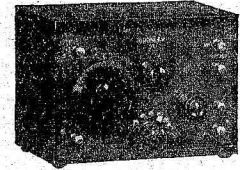
**The Crosley Radio Corporation**  
Powel Crosley, Jr., President  
7493 Sassafras Street, Cincinnati

**\$17<sup>50</sup>**  
Add 10% West  
of Rocky  
Mountains

**CROSLEY**  
**Better—Costs Less**

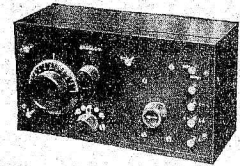
## The Marvels of Radio!

*Incredible to those  
who don't know!*



### The Crosley 1-Tube 50

Crosley's development of the famous Armstrong regenerative circuit enables you to "roam" the country and enjoy the thrill of picking up distant stations just as though you owned a multi-tube set,—all with one tube and at \$14.50, without accessories.



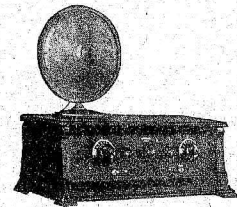
### 2-Tube Crosley 51

Same as wonderful Crosley 50 with additional tube amplifier. Local and nearby stations on loud-speaker always and distance up to 1500 miles under average conditions. Much greater range with head phones. \$18.50, without accessories.



### 3-Tube Crosley 52

A larger set for those who want greater reception range on the loud-speaker. Operates on three tubes, using wet or dry batteries. Consistent loud-speaker range 1500 miles or more. \$30, without accessories.



### The Crosley Trirdyn Special

**3 Tubes do the work of 5**  
A unique circuit combining tuned radio frequency, regeneration and reflexed amplification that equals in results the work of 5 and 6 tubes. None re-radiating. \$65, without accessories.