

Long Wave
Short Wave
News Spots
& Pictures

MICROPHONE

THE ORIGINAL U.S. RADIO NEWSPAPER'S

5
Cents
the Copy
\$1.50 Year

Volume III, No. 22

WEEK BEGINNING JUNE 2, 1934

* Published Weekly

This and That

By Morris Hastings

GIVEN intelligent material and intelligent, experienced players, drama on the radio can be decidedly attractive. Endow it with something less and it's... well, just too bad.

A few Wednesdays ago an enlightened sponsor offered a dramatization of KIPLING'S "Without Benefit of Clergy," with LESLIE HOWARD and DOROTHY BURGESS playing the principal roles.

The result was a fine, sensitive performance, a high-water mark in the broadcasting of dramas. One scarcely missed the visible setting the theatre can provide and the intangible intimacy experienced by actually seeing the actors before him.

It was more like hearing a story read aloud by people with cultivated voices and considerable powers of expression. And that, it seems to me, is an excellent quality for dramas on the radio.

Never mind the frantic action and sometimes horrid sound effects. Leave those to the stage and movies. They order those things better. Radio must develop a technique of its own.

The Crime Clues drama I listened to the same evening would have been more effective, I really believe, if one person had read the story, rather than having a slew of actors taking part in it.

The story itself was a good mystery drama; but so many actors—and some of them obvious—

(Continued on Page 7)



Mr. HASTINGS

NBC Operates 37 Short Wave Stations Not Heard Generally by the Public

Press Scores Radio Fire Report

Broadcasting from Chicago Is Ridiculed

The newspaper press renews its attack upon radio news broadcasting. The subject for the latest outburst is the reporting by radio of the recent Chicago fire.

The *Chicago Daily News*, summarizing the radio report of the fire under the title of "Radio Rumors," said in part:

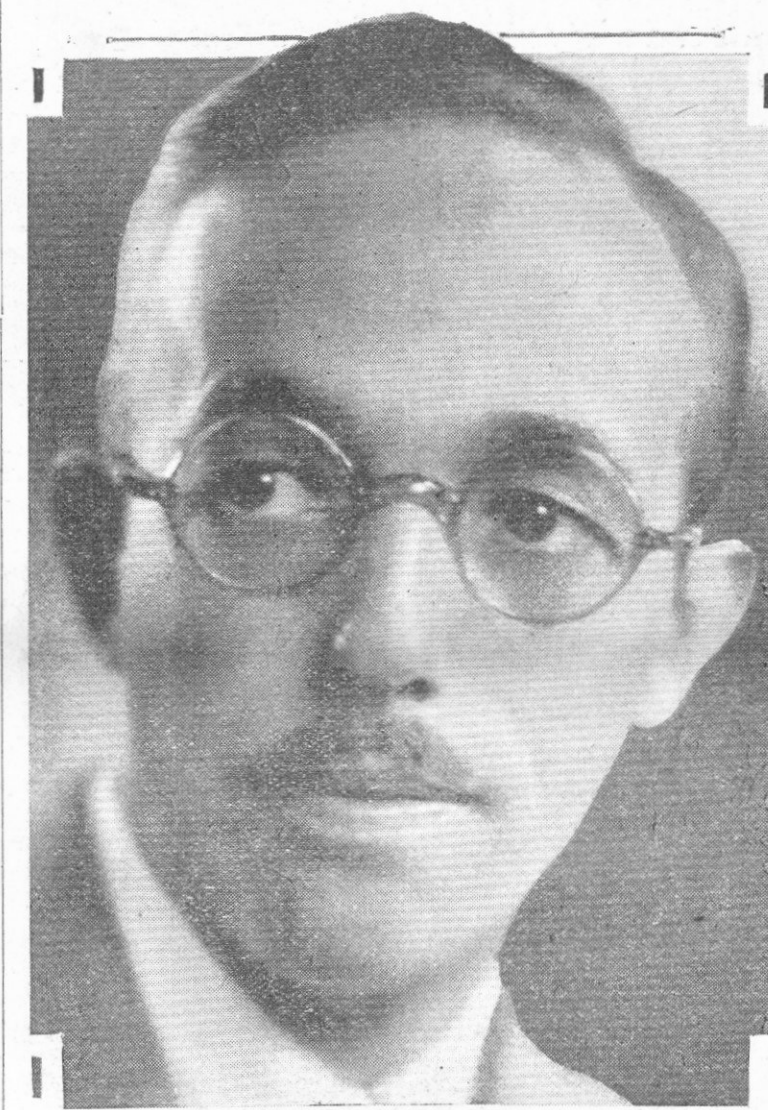
"It would be ungenerous, perhaps, to disparage the valiant efforts of the radio announcers who tried to tell the world about the Chicago fire. They told the world a lot of things that weren't so, and succeeded in getting many people vastly excited.

"There were thrills enough in Saturday night's big fire if one stuck to the bare facts. But radio has its own methods. The radio boys, untrained in news gathering, undisciplined in the value of accuracy, were doing their best to live up to the young tradition of their craft.

"If radio, on such occasions, is to be more than a useful transmitter of official messages, is to assume the function of broadcasting

(Continued on Page 7)

Supervises NBC Short Waves



O. B. HANSON, chief engineer for the National Broadcasting Company, discusses the use of short wave stations in the accompanying article.

Are Used for Experiments In Programs

By O. B. HANSON
Chief Engineer of NBC

While the general public probably is much more "short-wave conscious" at the present time than ever before, there is still a vast activity going on outside the broadcast band with which very few persons not connected with radio are familiar.

The National Broadcasting Company operates 37 different short-wave transmitters in addition to its regular broadcasting stations, and these short-wavers are never heard by the general listening public.

The stations below the broadcast band are used for various purposes, some of a program nature and others which are at the present time entirely experimental.

The call letters W3XAL, Bound Brook, N. J., and W9XF, Chicago, mean nothing to listeners in the United States but they are famous around the world.

They are powerful short-wave transmitters used to send NBC programs to foreign countries, and as a result of them, fan mail comes to Radio City from South America, South Africa, Australia and other distant points.

Then the NBC operates four "broadcast pick-up transmitters"

(Continued on Page 15)

Contents

News Flashes Box	Page 1
O. B. HANSON, chief engineer for NBC, discusses the use made of short wave stations	Page 1
This and That	Page 1
by MORRIS HASTINGS	Page 1
CLARA, LU 'N' EM, as they are in private life	Page 3
Drama, as produced by "radio's WALT DISNEY"	Page 3
Station Directory	Page 4
Educational Box	Page 4
Radio Lane	Page 5
by JIMMY J. LEONARD	Page 5
Studiosity by LES TROY	Page 5
Editorials	Page 5
Dr. WALTER DAMROSCH and his radio programs	Page 7
WEEI Page	Page 11
Police Radio Box	Page 12
Short Wave Directory	Page 13
A Mad Trio	Page 13
Reflections	Page 15
by DIANA HERBERT	Page 15
Nimblewits	Page 15
by EVERETT SMITH	Page 15
Q. and also A.	Page 15

'Red Poppy' Broadcast

ALEXANDER TROYANOVSKY, ambassador to the United States from Soviet Russia, will address the radio audience of the NBC-WJZ network Tuesday, June 12, during a program which starts at 10 P. M.

The occasion for the speech is the broadcast of the second half of GLIERE's ballet-music, "The Red Poppy."

It will be performed by the N B C Symphony Orchestra, FRANK BLACK directing.

The first half of the work will be given its American premiere by the same orchestra and conductor next Tuesday evening from 10 to 11.

The music has been enormously successful in Russia. FRANK BLACK obtained the rights of performance in this country from GLIERE himself to whom he sent an emissary last Summer.

Performance has been delayed as only a piano score was accessible until a month ago, when the full orchestral score was received.

News Flashes

A.M.
7.15 WNAC
8.00 WAAB WEAN WORC WMAS WFEA WNBH
10.45 WBZ
10.30 WEAJ Network (Tues., Thurs. 10.45)
10.45 WJZ Network
P.M.
12.01 WBZ
12.20 WNAC
1.30 WEAN WICC WFEA WORC WJZ WNBH WMAS
2.45 WAAB
6.00 WNAC WICC WFEA WORC WMAS WJZ
6.30 WEAN WNBH WTAG
7.00 WAAB WLBZ
9.45 WAAB
11.00 WNAC WEAN WICC WFEA WORC WMAS WLBZ WNBH WTAG
11.15 WEAJ Network; WABC, Network WJZ Network (Wed., 11.45, Sat. 11.30)

SUNDAYS

A.M.
8.45 WNAC WEAN WICC WFEA WMAS WLBZ WNBH
11.00 WBZ WEAJ-WJZ Network
P.M.
6.00 WNAC WEAN WICC WFEA WJZ WMAS WORC WNBH
6.45 WAAB
9.45 WAAB
10.45 WBZ
11.15 WNAC WICC WFEA WORC WMAS WLBZ WNBH WTAG

Epsom Derby Is Described

The annual running of England's most famous turf classic, the Epsom Derby, will be described over the CBS-WABC network on Wednesday, June 6, from 9.45 to 10.15 A.M., EDT.

The program will be relayed to America by short wave through facilities of the British Broadcasting Corporation.

The favorite this year is Colombo, an English thoroughbred owned by Lord GLANELY. Next favorite in the early betting is Windsor Lad.

The race is over a course of one and a half miles.

The Epsom Derby was originally run in 1780 and was sponsored by the Earl of Derby, head of the House of STANLEY.

In the century and a half since its establishment, the House of STANLEY has won the race only three times.

Likewise only three American horse breeders have had successful entries.

Pictures

PEGGY DAVIS, NBC actress	Front Cover
O. B. HANSON, chief engineer for the NBC	Page 1
ELIZABETH DAY, star of "Roses and Drums" sketches	Page 2
CLARA, LU 'N' EM	Page 3
ELSIE FERGUSON, noted actress	Page 4
MARY SMALL, young vocalist	Page 5
JAMES MELTON, tenor	Page 5
"UNCLE BOB" SHERWOOD, noted circus personality	Page 6
Dr. WALTER DAMROSCH, conductor	Page 7
CAROL DEIS, soprano	Page 7
CONNIE GATES, soprano and pianist	Page 8
IRVING KAUFMAN, CBS "Minstrel Man"	Page 10
EDDIE DUCHIN, orchestra leader	Page 12
The Oxol Trio	Page 13
ALICE FROST, NBC actress	Page 14
HELENE CLAIRE	Page 15
DAVID ROSS, CBS announcer	Back Cover

Saturday, June 2 - Goldman Directs Band on WEA F at 5.30 P.M.

Highlights

- A.M.**
- 11.45—Dr. Raymond Ditmars, CBS-WABC
- P.M.**
- 5.30—Goldman directs massed bands, NBC-WEAF
- 8.30—Floyd Gibbons, NBC-WEAF
- 9.00—House Party, NBC-WEAF
- Grete Stueckgold, C B S-WABC
- 10.00—Byrd Expedition, CBS-WABC
- Lennie Hayton's Orchestra, NBC-WEAF
- 10.30—Norman Thomas, NBC-WEAF

(All programs are listed in Eastern Daylight Saving Time. Eastern Standard Time is one hour earlier; Central Time is two hours earlier.)

- 6.45 A.M. EDT; 5.45 EST; 4.45 CT
Tower Health Exercises, WEA F WEEI WGY, 1 h.
- 7 A.M. EDT; 6 EST; 5 CT
Musical Clock, WBZ WTIC, 1 h.
- 7.30 A.M. EDT; 6.30 EST; 5.30 CT
Yoichi Hiraoka, xylophone, WJZ McCormick Fiddlers, WLW, 30 m.
Organ Reveille, WABC, 30 m.
- 7.45 A.M. EDT; 6.45 EST; 5.45 CT
Pollock and Lawnhurst, WEA F WGY
Jolly Bill and Jane, WJZ WBAL
- 8 A.M. EDT; 7 EST; 6 CT
Radio City Organ, WEA F, 30 m. (WEEI from 8.15)
E. B. Rideout, weather and Current Events, WEEI
Collin Driggs, organist, WTIC, 30 m.
Salon Musicale, WABC, 45 m.
Elder Michaux and his Congregation, WCAU, 30 m.
- 8.15 A.M. EDT; 7.15 EST; 6.15 CT
Don Hall Trio, WJZ WBZ WHAM
- 8.30 A.M. EDT; 7.30 EST; 6.30 CT
Cheerio, WEA F WEEI WTIC WGY WLW, 30 m.
Lew White at the organ, WJZ WBZ WHAM KDKA, 30 m.
Wake Up and Smile, WCAU
- 8.45 A.M. EDT; 7.45 EST; 6.45 CT
The Ambassadors, WABC
- 9 A.M. EDT; 8 EST; 7 CT
Morning Glories, WEA F WGY WLW
Breakfast Club, 1 h. (WBZ from 9.15)
WHAM from 9.30, KDKA, 30 m.
Virginia Reade, talk, WBZ
Luxembourg Gardens, ABC, 45 m.; WCAU, 15 m.
- 9.15 A.M. EDT; 8.15 EST; 7.15 CT
Landt Trio and White, WEA F WEEI WGY WLW
Minute Manners, WCAU
- 9.30 A.M. EDT; 8.30 EST; 7.30 CT
North Woods on Broadway, WEA F WEEI WTIC WGY
Hymns, WLW
- 9.45 A.M. EDT; 8.45 EST; 7.45 CT
Banjoers, WEA F WEEI WTIC WGY WLW
News, WEEI KDKA
Magic Hour, WBZ
The Meistersingers, WABC WCAU
- 10 A.M. EDT; 9 EST; 8 CT
Skip, Step and Happiana, WEA F WEEI WTIC WGY
Edward MacHugh, WJZ WHAM KDKA
Cooking School, WBZ, 30 m.
Mail Bag, WLW
Jan Savitt's Orchestra, WABC WCAU, 30 m.
- 10.15 A.M. EDT; 9.15 EST; 8.15 CT
Morning Parade, News at 10.30; WEA F WEEI WTIC WGY, 45 m.
Singing Strings, WJZ WBAL, 30 m.; WBZ KDKA from 10.30
Organ, WLW
- 10.30 A.M. EDT; 9.30 EST; 8.30 CT
Rhythm Jesters, WLW
News and Children's Program, WABC WCAU, 30 m.
- 10.45 A.M. EDT; 9.45 EST; 8.45 CT
News and Originalities, WJZ WBAL
News and Personalities, WJZ WBAL
News and Piano, WBZ
Antoinette West, songs, WLW
- 11 A.M. EDT; 10 EST; 9 CT
9.15 CT
Alma Schirmer, pianist, WEA F
Food Hour, WEEI WTIC, 30 m.
Galaxy of Stars, WGY WLW
Honeymooners, WBZ KDKA WHAM
Cheer Up, WABC WCAU, 30 m.
- 11.15 A.M. EDT; 10.15 EST; 9.15 CT
The Vass Family, seven harmony children, WEA F WGY
Spanish Idylls, WJZ WBZ WHAM, 30 m.
Kiddies Club, KDKA, 45 m.
Market Reports, WLW
- 11.30 A.M. EDT; 10.30 EST; 9.30 CT
Gloria La Vey, soprano, piano duo, WEA F WEEI WTIC, 30 m.
Children's Theatre, WGY, 30 m.

- Heinie's Grenadiers, WJZ WBZ WHAM, 30 m.
Ponce Sisters, WLW
Asbury College Glee Club, WABC WCAU
- 11.45 A.M. EDT; 10.45 EST; 9.45 CT
Painted Dreams, WGN, WLW
Dr. Raymond Ditmars of the Bronx Zoo, WABC
- 12 N. EDT; 11 A.M. EST; 10 CT
Pietro Yon, organist, WEA F WEEI WTIC
Dick Teala, Gwyneth Neal, songs, WJZ KDKA
Monitor Views the News, WBZ
King, Jack and Jester, WLW
Jack and Jane Carlton, WABC WCAU
Poetry and Bird Calls, WOR
- 12.15 P.M. EDT; 11.15 A.M. EST; 10.15 CT
Conia Fonzacova, soprano, WJZ WHAM
Weather, WBZ
Duo Quartet, WLW
Pete Woolery's Canadians, WABC
Orchestra, WOR
- 12.30 P.M. EDT; 11.30 EST; 10.30 CT
Maurice Lee's Ensemble, WEA F, 30 m.
Jack, Del and Ray, WEEI, 30 m.
Luncheon Dance Orchestra, WTIC, 30 m.
Vic and Sade, WJZ WBZ KDKA WHAM
Organ, WLW WABC WCAU, 30 m.
Al Kavelin's Orchestra, WABC WCAU, 30 m.
Huger Elliot, WOR
- 12.45 P.M. EDT; 11.45 EST; 10.45 CT
The Songfellows, WJZ WBZ WBAL
WHAM
Huntley's Orchestra, KDKA
The Texans, WLW
Stamp Club, WOR
- 1 P.M. EDT; 12 N. EST; 11 A.M. CT
Hartford Inter High School Choir, WEA F, 30 m.; WEEI from 1.10
Stocks, WEEI
Rural Review, WTIC
Words and Music, WJZ KDKA, 30 m.
Farm News, WBZ
Madison Ensemble, WABC WCAU, 30 m.
Charles Sawyer, Lt. Governor of Ohio, WLW
Health Talk, WOR
- 1.15 P.M. EDT; 12.15 EST; 11.15 CT
4-H Club, WBZ
Madison Ensemble, WABC WCAU, 30 m.; WMAS, 15 m.
John Muldowney, WLW
Myrtle Boland, songs, WOR
- 1.30 P.M. EDT; 12.30 EST; 11.30 CT
Harold Stern's Ensemble, WEA F WEEI
National 4-H Club, WJZ WBZ WHAM
KDKA WLW, 1 h.
Harold Knight's Orchestra, WABC WCAU, 30 m.
Books Rosalind Genet, WOR
- 1.45 P.M. EDT; 12.45 EST; 11.45 CT
Harold Stern's Ensemble, WEA F WEEI
WTIC WGY
Harold Knight's Orchestra, WABC WCAU, 30 m.
Waltz program, WOR
- 2 P.M. EDT; 1 EST; 12 N. CT
Xavier Cugat's Orchestra, WEA F WEEI WGY
WTIC, 30 m.
Saturday Syncopators, WABC WCAU
- 2.15 P.M. EDT; 1.15 EST; 12.15 CT
Artist Recital, WABC WCAU
Piano Duo, WOR
- 2.30 P.M. EDT; 1.30 EST; 12.30 CT
The Confidence Man, WEA F WEEI WTIC
WGY, 30 m.
Songfellows, WJZ WBZ WHAM KDKA
Round Towners, WABC WCAU, 30 m.
The Homemaker, WOR
- 2.45 P.M. EDT; 1.45 EST; 12.45 CT
Concert Favorites, WJZ WBZ WHAM
KDKA
The Low Down, WLW
- 3 P.M. EDT; 2 EST; 1 CT
Green Brothers' Orchestra, WEA F WEEI
WTIC WGY WLW, 30 m.
Dan Russo's Orchestra, WJZ KDKA
Smith College Program, WBZ, 30 m.
Columbia Salon Orchestra, WABC WCAU,
30 m.
"Star Stories," Allan Broms, WOR

Mimics Filmsters



ELIZABETH DAY, of the stage, impersonates film heroines on the "Forty-five Minutes in Hollywood" programs broadcast over the CBS-WABC chain Sundays at 10.30 P. M.

- 3.15 P.M. EDT; 2.15 EST; 1.15 CT
Dan Russo's Orchestra, WJZ
Springtime Concert, Orchestra, Frank Black
directing, WEA F WEEI WTIC WGY
WLW, 1 h.
Your Lover, WOR
- 3.30 P.M. EDT; 2.30 EST; 1.30 CT
Saturday Songsters, WJZ WBZ WHAM
KDKA, 30 m.
Dancing Echoes, WABC
Pinto Pete, WCAU, 30 m.
Afternoon Musicale, WOR, 1 h.
- 3.45 P.M. EDT; 2.45 EST; 1.45 CT
Baseball, Detroit vs. Chicago, WGN, 1 h.,
45 m.
- 4 P.M. EDT; 3 EST; 2 CT
Miniature Theatre, WJZ WBZ KDKA, 30 m.
Ann Leaf, organ, WABC, 30 m.
The Richard Family, WCAU, 30 m.
- 4.30 P.M. EDT; 3.30 EST; 2.30 CT
Lady Next Door, WEA F WEEI WTIC
WGY, 30 m.
Don Carlos Orchestra, WJZ WBZ WHAM
KDKA, 30 m. (WLW from 4.45)
Rhythm Jesters, WLW
George Scherban's Orchestra, WABC, 30 m.
Sweet Sixteen Revue, WCAU, 30 m.
Gus Steck's Chanticleers, WOR
- 5 P.M. EDT; 4 EST; 4 CT
Don Bigelow's Orchestra, WEA F WEEI
WTIC WGY WLW, 30 m.
Palmer Clark's Orchestra, WABC WCAU,
Velasco's Orchestra, WABC WCAU, 30 m.
- 5.15 P.M. EDT; 4.15 EST; 3.15 CT
The Vagabonds, WGY
Bernard Gabriel, piano, WOR
- 5.30 P.M. EDT; 4.30 EST; 3.30 CT
National Band Concert, Edwin Franko
Goldman, WEA F WEEI, 30 m.
Sunset Hour, WTIC
Martha and Hal, WGY
Platt and Nierman, WJZ WBZ
John Barker, baritone, WLW
Jack Armstrong, All-American Boy, WABC
WCAU
"Just Dogs," Steve Sevrn, WOR
- 5.45 P.M. EDT; 4.45 EST; 3.45 CT
Orphan Annie, WJZ WBZ WHAM KDKA
WGN
St. Bonaventure College Glee Club, WCAU,
30 m.
French Class, WOR

- 6 P.M. EDT; 5 EST; 4 CT
Al Pearce's Gang, WEA F WLW, 30 m.
The Evening Tattler, WEEI, 30 m.
Wrightville Clarion, WTIC
Peter Van Steedan's Orchestra, WJZ WBAL
"Wings," George Mason, WBZ
Uncle Don, WOR, 30 m.
Jack Armstrong, WLW
- 6.15 P.M. EDT; 5.15 EST; 4.15 CT
Baseball Scores, WBZ
Billy Hays' Orchestra, WABC WCAU
m. (WGY WEEI WLW from 6.45)
- 6.30 P.M. EDT; 5.30 EST; 4.30 CT
Tom Coakleys' Orchestra, WEA F WTIC, 30
m. (WGY WEEI from 6.45)
Baseball scores and Current Events, WEEI
Stamp Club, WJZ WHAM KDKA
Sports, weather, WBZ
Jack Armstrong, WLW
Charles Carlile, WABC
Harold Knight's Orchestra, WCAU
Motor Tips, WOR
Bob Newhall, WLW
- 6.45 P.M. EDT; 5.45 EST; 4.45 CT
John Herrick, WJZ WBAL KDKA WHAM
Concert, Edward MacHugh, baritone, WBZ
Frederick William Wile, WABC WCAU
"River Habits," WLW
Pauline Alpert, pianist, WOR
- 7 P.M. EDT; 6 EST; 5 CT
Baseball Resume, WEA F
The Three Scamps, WEEI WTIC WGY
Captain Al Williams, WJZ KDKA, 30 m.
World in Review, WBZ
Margaret Carlile, songs, WLW
Leon Belasco's Orchestra, WABC WCAU
Ford Frick, sports, WOR
- 7.15 P.M. EDT; 6.15 EST; 5.15 CT
Religion in the News, WEA F WGY
Ethel Grenier, WEEI
Sports, WTIC
Pickens Sisters, WJZ
Joe Rines' Orchestra, WBZ
German Band, WLW
Harry Hershfield, WOR
- 7.30 P.M. EDT; 6.30 EST; 5.30 CT
Eddie Peabody, banjo, Richard Himber's Or-
chestra, WEA F, 30 m.
After Dinner Revue, WEEI
Johnny Johnson's Orchestra, WGY, 30 m.
Don Bestor's Orchestra, WJZ WBZ KDKA
Bob Newhall, WLW
Betty Barthel, WABC WCAU
American Legion Band, WOR, 30 m.
- 7.45 P.M. EDT; 6.45 EST; 5.45 CT
Harmoncers, WTIC
Pickens Sisters, WJZ WBZ
"20th Century Homes," A. K. Laing, WLW
Roy Helton, "Looking at Life," WABC
- 8 P.M. EDT; 7 EST; 6 CT
Teddy Bergman, Betty Queen, Harold Stern's
Orchestra, WEA F, 30 m.
U. S. Marine Band, WEEI, 30 m.
Musical Program, WTIC, 30 m.
General Electric Program, WGY
R. F. D. Hour, WLW, 30 m.
Fats Waller, organ, WABC
Philadelphia High School Music Festival,
WCAU, 1 h.
Dinner Concert, WHAS, 30 m.
City Government Talk, WOR
- 8.15 P.M. EDT; 7.15 EST; 6.15 CT
Advertisers Federation, WBZ
Armenian National Music Program, WABC
All-Star Trio, WOR
- 8.30 P.M. EDT; 7.30 EST; 6.30 CT
Floyd Gibbons, WEA F WEEI WTIC WGY
WLW, 30 m.
Orpheus Choir, KDKA, 30 m.
Hotel Gibson Orchestra, WLW
Hands Across the Border, WJZ WBZ WBAL
WHAM KDKA
Morton Downey's Studio Party, WABC,
30 m.
Atlantic City High School Glee Club, WPG,
30 m.
Arthur Warren's Orchestra, WOR
Seymour Simon's Orchestra, WGN, 30 m.
- 8.45 P.M. EDT; 7.45 EST; 6.45 CT
Tessie, the Typist, WBZ
- 9 P.M. EDT; 8 EST; 7 CT
House Party, Joe Cook, Frances Langford,
Voorhees' Orchestra, WEA F WEEI WLW
WGY, 30 m.
Famous Favorites, WTIC, 30 m.
Jamboree, WJZ KDKA WHAM, 30 m.
New England Community Singing Clubs,
WBZ
Grete Stueckgold, Andre Kostelanetz' Orches-
tra, WABC WCAU, 30 m.
Newark Symphony Orchestra, WOR, 1 h.,
30 m.
- 9.15 P.M. EDT; 8.15 EST; 7.15 CT
The Monitor Views the News, WBZ
- 9.30 P.M. EDT; 8.30 EST; 7.30 CT
Beatrice Fairfax, WEA F WEEI WGY WLW,
30 m.
Melodeers, WTIC, 30 m.
Eddie Duchin's Orchestra, WJZ WBZ KDKA
WHAM, 30 m.
Champions, Richard Himbers' Orchestra,
WABC WCAU, 30 m.
Aldrich's Hawaiians, WPG, 30 m.
Anson Week's Orchestra, WGN
- 9.45 P.M. EDT; 8.45 EST; 7.45 CT
Jan Garber's Orchestra, WGN
- 10 P.M. EDT; 9 P.M. EST; 8 CT
Hayton's Orchestra, Saxon Sisters, WEA F
WEEI WGY WLW, 30 m.
Merry Madcaps, WTIC, 1 h.
Tim Ryan's Place, WJZ WHAM
Three Blue Notes, WBZ (Weather at 10.15)
Manhattan Serenaders, WABC WCAU,
30 m.
Behind the Law, KDKA
Chicago Fair, WABC
"Romance in Song," WOR, 30 m.
Auditorium Dance Orchestra, WPG
- 10.30 P.M. EDT; 9.30 EST; 8.30 CT
Norman Thomas, National Socialist Con-
vention, WEA F WEEI WTIC WGY,
30 m.
WLS Barn Dance, WJZ WBZ WHAM
KDKA WLW, 1 h.
Elder Michaux and his Congregation, WABC
WCAU, 30 m.

- Steel Pier Orchestra, WPG, 30 m.
Organ Recital, WOR, 30 m.
Greater Louisville Ensemble, WHAS, 30 m.
- 11 P.M. EDT; 10 EST; 9 CT
Enric Madriguera's Orchestra, WEA F WTIC,
30 m. News at 11.15, WEEI from 11.15)
E. B. Rideout, Baseball scores and Current
Events, WEEI
Doc Peyton's Orchestra, WGY, 30 m.
Honeymooners, Grace and Eddie, WJZ
Sylvia Froos, songs, WABC WCAU
Bud Fisher's Orchestra, WOR
- 11.15 P.M. EDT; 10.15 EST;
News and Reggie Childs' Orchestra, WABC
WCAU
- 11.30 P.M. EDT; 10.30 EST;
One Man's Family, WEA F WEEI WGY,
30 m.
News and Brito's Orchestra, WJZ WBZ
WHAM, 30 m.
News and Huntley's Orchestra, KDKA, 30 m.
Hotel Gibson Orchestra, WLW, 30 m.
Anthony Trini's Orchestra, WOR, 30 m.
Traymore Grille Orchestra, WPG
Anson Weeks, Jan Garber, Earl Burtneff's
Orchestra, WGN, 3 h.
- 11.45 P.M. EDT; 10.45 EST;
9.45 CT
Johnnie Johnson's Orchestra, WABC WCAU
- 12 M. EDT; 11 P.M. EST; 10 CT
Dan Russo's Orchestra, WEA F WLW, 30 m.
Jack Denny's Orchestra, WJZ WBZ, 30 m.
Doc Peyton's Orchestra, WGY
Messages to Far North, KDKA
Casa Loma Orchestra, WABC WCAU, 30 m.
Harold Stern's Orchestra, WOR, 30 m.
- 12.30 A.M. EDT; 11.30 EST;
Care Free Carnival, WEA F WEEI WGY
WLW
Lopez' Orchestra, WJZ WBZ, 30 m.
Marty Gregor's Orchestra, KDKA
Carol Loifner's Orchestra, WABC WCAU,
30 m.

Rotary Club Meeting To Be Broadcast

Leaders of Rotary International, including JOHN NELSON, president, will report on the WABC-Columbia network from Chicago Tuesday, June 12, at 1.30 to 1 P. M. Fourteen officers, speaking briefly on "Rotary—Reporting on World Recovery," will address their remarks wherever possible to thousands of fellow Rotarians meeting simultaneously in this country and abroad.

More than 80 stations of the Columbia Broadcasting System and their short-wave complements, W2XE, New York, and W3XAU, Philadelphia, will carry the special program from the Sherman Hotel at a meeting of the Rotary Club of Chicago, largest in the world. The international officers will be there en route to the organization's convention in Detroit, June 25 to 29.

Speakers will include Rotary officials of 11 foreign countries, drawn from the various fields of law, engineering, advertising, civic legislation, public utilities, banking and insurance. They will discuss economic conditions in their homelands. The United States will be represented by two Chicago leaders. The list of distinguished speakers follows:

- JOHN NELSON, Montreal, Canada, president of Rotary International, an insurance executive.
- CLINTON P. ANDERSON, Albuquerque, New Mexico, immediate past president, now state treasurer of New Mexico.
- CHESLEY R. PERRY, secretary.
- HERBERT SCHOFIELD, third vice-president, an English educator and scientist.
- MAURICE DUPERREY, second vice president, French manufacturer.
- OTTO FISCHER, director, German banker.
- PAUL T. THORWALL, director-German banker.

Children Cry For It



PHIL DUEY, NBC baritone, is not so popular in his own home. Mrs. DUEY insists that PHIL confine his vocal outbursts to such moments as will not disturb the children. As a result, PHIL rehearses almost solely in the NBC studios.

A Comic Strip Comes To Life Thanks To Radio's Walt Disney

New Radio Show Is on 'The Road'

How to put a newspaper comic strip on the air without destroying the illusion created by the artist in a fast-moving series of drawings? This was the problem to be faced and handled by a young man named HIMAN BROWN, producer of radio shows.

The comic strip is about DICK TRACY, that fearless detective, whose square jaw romps through hair-raising experiences in the drawings of CHESTER GOULD, the artist.

Like a Broadway show this new radio experiment had to be tried out "on the road." So to station WBZ in Boston came Mr. BROWN with some script and a lot of ideas. To get his actors he had to pick a cast from local talent. And this is an uncertainty in any kind of show business.

"To my surprise and delight," says Brown, "I found many actors and actresses who are comparable to the seasoned New York players I have come to know so well."

A comic strip like DICK TRACY has a lot of action, gun shots, speeding automobiles, crowd noise, police alarms, sirens and all sorts of noises. And this has all to be worked into a very fast dialogue.

So BROWN went into a huddle with the engineers and production men of WBZ and, after much rehearsal finally achieved a realistic DICK TRACY.

Now DICK TRACY lives in the person of BOB BURLIN, a production man for WEEI another local station. TRACY's pal, PAT PATTON, is CRAIG VAD, singer of Irish ballads, and the rest of the cast is similarly occupied when they are not getting in and out of scrapes with DICK TRACY.

This new radio show is dedicated to breaking up the idea that gangsters are heroes. Never is the gangster given a "break." He is always the gunman, the thief who lurks in the dark and preys on unsuspecting persons.

The program, which may presently move to the networks, is now heard every Monday, Wednesday and Friday over station WBZ at 7.15 P. M.

CBS Presents the Detroit Orchestra

Concerts by the Detroit Symphony Orchestra, playing in the Ford Gardens at the 1934 Century of Progress Exposition in Chicago, will be broadcast four times a week by the Columbia network, beginning Saturday, June 16.

Subsequently, the concerts will be heard on Saturdays from 9.30 to 10.30 P. M., on Sundays from 3 to 4 P. M., and on Tuesdays and Thursdays from 4 to 5 P. M.

Adventures of A Habitant

The "tall" adventures of JOE FELICITAS PINAUD, habitant of the Canadian North Woods, will be dramatized in a new series of sketches to be broadcast over an NBC network on Saturdays and Thursdays at 9.30 A. M. The programs originate at station WGY in Schenectady.

Clara, Lu 'n' Em Are Happiest Of Homebodies In Private Life



CLARA (LOUISE STARKEY), LU (ISOBEL CAROTHERS) and EM (HELEN KING). They broadcast over an NBC-WEAF network at 10.15 A. M.

Became Acquainted As Students In University

CLARA, LU 'n' EM are, in private life, the unpretentious homebodies you would expect them to be from the characters they portray over the NBC-WEAF network.

To be sure, they like new frocks, new hats, new shoes and gloves as well as the next young woman.

But they find their chief joy, so their informative agent discloses, in keeping homes for their husbands—each one of whom, his ador-

ing wife claims, is about the "duckiest" imaginable.

Off the air, CLARA answers to the name of LOUISE STARKEY, or Mrs. PAUL MEAD. LU is ISOBEL CAROTHERS, or Mrs. BEROLZHEIMER; while EM is Mrs. JOHN MITCHELL, nee HELEN KING.

The three girls met several years ago as students of the School of Speech at Northwestern University.

The characters of CLARA, LU 'n' EM were born at a "spread" in celebration of HELEN KING's birthday. They met with so much success, and the girls had so much fun, that they decided

to make up new adventures for the trio.

It wasn't long after leaving college that they got a job with a radio station in Chicago where they still live and where they broadcast from even though they have made the networks.

Now that Summer is coming along all the girls will be going swimming. EM likes to go boating in a sailboat; CLARA will be going in for bridge with renewed zest.

They write their own copy, driving to a secluded spot in Evanston to rehearse after each early morning broadcast.

Eddie Peabody Is First A Rancher, Then A Radio Star

EDDIE PEABODY, who is heard every Saturday at 7.30 P. M. over the NBC-WEAF network, doesn't regard himself as an entertainer. He'd rather stay on his ranch at Riverside, California, raise dogs and plant orange trees.

Although EDDIE plays the banjo well, not to mention a dozen or so other queer-looking instruments, he claims he is a farmer. His boast is that he and Mrs. PEABODY are not town farmers—no, sir, they're real honest-to-goodness dirt farmers who climb into overalls, ride the tractors and

do everything that some folks would expect a hired man to do. EDDIE was born in Reading, Massachusetts. Just how he happened to get to California he does not say.

"People talk about thrills," said Eddies, "It may be on the stage, a plane ride, or what not. Yes, these are thrills, but they are not the kind of thrills that last. I get a heap bigger thrill from the things I do for the four boys we are raising than I do when 10,000 people applaud my efforts."

"We all like to be cheered for the good things we do on the stage, or in other ways before the public, but give me the simple life on my ranch."

EDDIE's instruments, which he plays on his NBC programs, are valuable and numerous. But he'd rather talk about the ranch and how many trees he set out the past season.

Makes Radio Appeal

Dr. ISRAEL GOLDSTEIN, President of the Jewish National Fund will speak on behalf of Palestine Flower Day over the WABC-Columbia network on Sunday, June 3, at 5 P. M. A chorus of 60 voices will sing.

Lost Soprano

THE Cities Service Quartet was grouped around the NBC microphone at a rehearsal recently. Three of them are six-footers. Rosario Bourdon, musical director of the program, rapped for attention and looked about the studio. "Where's Miss Dragonette?" he said. "Someone go and find her." "Here I am," piped a small voice, and Jessica stood on tip-toes behind the quartet. She is just five feet tall.

Financial Note

WHAT ABOUT THE STATUTE OF LIMITATIONS?



RICHARD HIMBER, NBC orchestra leader, received a note last week asking if he were the director, who, seven years ago, accompanied SOPHIE TUCKER on tour. HIMBER was thrilled to be remembered that long. And then he saw the rest of the note: "If you are, this is to remind you that your drummer still owes us for a week's board and room."

Dr. Ditmars Introduces Two Guests

Dr. RAYMOND L. DITMARS, curator of reptiles and mammals at the New York Zoological Park, will introduce a rattlesnake and a puff adder for the first time on the radio during a program broadcast over CBS-WABC chain this Saturday from 11.45 A. M. to 12 Noon.

Dr. DITMARS will be interviewed by PAUL DOUGLAS, CBS announcer, and will talk about reptiles.

The guests of honor, the rattlesnake and puff adder, will address the audience in their native language.

It is Dr. DITMARS' fond boast that he once slept in a Pullman berth with a poisonous snake as companion.

He is a Fellow of the New York Zoological Society and a corresponding member of the Zoological Society of London.

Dr. DITMARS is the author of a number of books. Among them are: "Strange Animals I Have Known" and "Reptiles of the World."

He was once court reporter for the New York Times.

Young Painters Are Interviewed

Five child painters who will exhibit canvases at the Grand Central Galleries in New York will be interviewed over the WABC-Columbia network on Monday, June 4, at 4.15 P.M. They will be questioned by FRANCIS C. HEALEY, art critic.

The five young artists are: "PAT" THOMPSON, 6; JOHNNIE GORDON, 10; PATTY KERHIG, 11; JOHN DeLORENZI, 12, and HELEN TAUBERT, 11.

Nelson Broadcasts En Route

OZZIE NELSON'S Orchestra, which is now on a tour of 10 states, will play over the WABC network in a special dance program Tuesday, June 5, at midnight. The music will originate from the EDDIE PEYTON Club at Crafton, Pa.

For Southern Listeners

The programs of WEAF or WJZ may be heard over:

- WFLA-WSUN Clearwater, Florida
- WSB Atlanta, Georgia
- WSMB New Orleans, La.
- WOAI San Antonio, Tex.
- WSM Nashville, Tenn.

The programs of WABC may be heard over:

- WQAM Miami, Florida
- WJTV Washington, D. C.
- WBT Charlotte, N. C.
- WTAR Norfolk, Va.
- WBIG Greensboro, N. C.

Middle Western Listeners

The programs of WEAF may be heard over:

- KSD St. Louis, Mo.
- KYW Chicago, Ill.
- WMAO Chicago, Ill.
- WTAM Cleveland, Ohio

The programs of WJZ may be heard over:

- WENR-WLS Chicago, Ill.
- WGAR Cleveland, Ohio
- WJR Detroit, Mich.

The programs of WABC may be heard over:

- WBBM Chicago, Ill.
- WHK Cleveland, Ohio
- WCCO Minneapolis, Minn.
- KMOX St. Louis, Mo.
- WHAS Louisville, Ky.

NOTE: Outstanding local programs of these stations are regularly listed in *The MICROPHONE*.

Sunday, June 3 - Helen Hayes Is Guest on WEAF at 10.30 P.M.

Highlights

A.M.

9.30—Tennis lesson by Ellsworth Vines, Jr., NBC-WEAF

P.M.

3.00—Columbia Symphony, CBS-WABC

6.20—Egon Petri and string quartet, NBC-WJZ

8.00—Jenny Concert, WEEI "Voice of Columbia," with George Jessel, CBS-WABC

9.00—Elsie Ferguson, CBS-WABC

9.30—Album of Familiar Music, NBC-WEAF

10.00—Mme. Schumann Heink, NBC-WJZ

10.30—Helen Hayes, NBC-WEAF

12 M.—Gov. Albert Ritchie of Maryland, NBC-WEAF

12.45 P.M. EDT; 11.45 EST; 10.45 CT

H. V. Kaltenborn, WABC WCAU WPG

1 P.M. EDT; 12 N. EST; 11 A.M. CT

The Road to Romany, WEAF WTIC WGY, 30 m.

Church of the Air, Father E. A. Duff, Chaplain, U. S. Navy, WABC WPG, 30 m.

Church of the Air, WCAU Petrole String Quartet, WOR, 1 h. Piano Duo WMCA

1.15 P.M. EDT; 12.15 EST; 11.15 CT

The Music Weaver, WGY Six Accordions, WMCA

1.30 P.M. EDT; 12.30 EST; 11.30 CT

Surprise Party, Mary Small, WEAF WEEI Church in the Hills, WLW, 30 m.

WGY Concert Classics, WTIC, 1 h. Compinsky Trio, WABC WCAU Rhythm Boys, WPG

Sunday Forum, Dr. Ralph W. Sochman, WJZ WBAL WHAM

News, WMCA

1.45 P.M. EDT; 12.45 EST; 11.45 CT

Mildred Dilling, harpist, WEAF WEEI WGY

Jewish Community Center, WPG Dr. Paul V. Winslow, WMCA

2 P.M. EDT; 1 EST; 12 N. CT

Gene Arnold's Orchestra, WEAF WEEI WGY WLW, 30 m.

South Sea Islanders, WJZ WBZ WBAL Edith Murray, songs, WABC WPG

Hotel Morton Ensemble, WPG, 45 m. Instrumental Trio, WMCA, 30 m.

2.15 P.M. EDT; 1.15 EST; 12.15 CT

Abram Chasins piano, WABC WCAU Ben Greenblatt, WCAU

2.30 P.M. EDT; 1.30 EST; 12.30 CT

Grace Hayes, WEAF WEEI WTIC WGY Concert Artists, WJZ WBZ WBAL WLW, 30 m.

Lazy Dan Minstrel, WABC WCAU Memories, Alice Remsen, WOR, 30 m.

Three Little Funsters, WMCA, 30 m.

2.45 P.M. EDT; 1.45 EST; 12.45 CT

Landt Trio and White, WEAF WEEI WTIC Raymond Jacquemot, baritone, WPG

WLW WGY

3 P.M. EDT; 2 EST; 1 CT

Talkie Picture Time, June Meredith, WEAF WEEI WGY, 30 m.

Jacob Tavshish, WLW Bar X Days and Nights, WJZ WBZ KDKA, 30 m.

Symphonic Hour, WABC WCAU, 1 h. Rev. Thomas E. Little, WOR, 30 m.

Dr. Jacob Tavshish, WLW, 30 m. Gospel Message, WPG

Songs, music, WMCA, 30 m.

3.30 P.M. EDT; 2.30 EST; 1.30 CT

Dancing Shadows, Dolin's Orchestra, William Hain, tenor, WEAF WEEI WTIC WGY WLW, 30 m.

Dion Kennedy, organist, WJZ WBZ KDKA WHAM WBAL, 30 m.

Paoline Alpert, piano, WOR Oratorio from Calvary Baptist Church, J. T. Thurston Noe, organist, 60-voice choir, WMCA, 1 h., 30 m.

4 P.M. EDT; 3 EST; 2 CT

Dramatic Sketch, WEAF WEEI WTIC WGY Texans, trio, WLW

Sousa's Band, WJZ WBZ WHAM KDKA, 30 m.

Buffalo Variety Workshop, WABC WCAU Musicale, WOR, 30 m.

The Texans, WLW

4.30 P.M. EDT; 3.30 EST; 2.30 CT

Pedro Vias, Orchestra, WEAF WEEI WGY WLW, 30 m.

Drama, WJZ WBZ WHAM KDKA, 30 m. Oregon on Parade, WABC WCAU WPG, 30 m.

Lee Conrad, Marjorie Tremont, piano, WOR

5 P.M. EDT; 4 EST; 4 CT

John B. Kennedy, WEAF WEEI WTIC WGY National Vespers, Dr. F. H. Knubel, WJZ WBZ KDKA WHAM WCAU WPG, 30 m.

Erva Giles, soprano, WOR Family Prayer Period, WLW

Young People's Church of the Air, WMCA, 1 h.

5.15 P.M. EDT; 4.15 EST; 3.15 CT

Sylvan Trio, George Seibel, guest, WEAF WEEI WGY

Modernaires, WTIC Tony Wons, WABC WCAU WPG

"Current Legal Topics," WOR Afternoon Musicale, WGN

5.30 P.M. EDT; 4.30 EST; 3.30 CT

Hoover Sentinels, Edward Davies, baritone, Chicago Capella Choir, WEAF WEEI WGY WLW, 30 m.

Blue Room Echoes, WTIC Igor Gorin, WJZ WBZ WHAM KDKA, 30 m.

Frank Crumit and Julia Sanderson, WABC President Hotel Ensemble, WPG WCAU, 30 m.

Robert Reid, WOR, 30 m.

6 P.M. EDT; 5 EST; 4 CT

Catholic Hour, WEAF WEEI WTIC WGY, 30 m.

Heart Throbs of the Hills, WJZ WHAM KDKA WBAL

(All programs are listed in Eastern Daylight Saving Time. Eastern Standard Time is one hour earlier; Central Time is two hours earlier.)

8 A.M. EDT; 7 EST; 6 CT

Melody Hour, WEAF WGY, 1 h. Tone Pictures, WJZ WBAL, 30 m. On the air today and organ reveille, WABC

8.30 A.M. EDT; 7.30 EST; 6.30 CT

Lew White, organ, WJZ WBAL 30 m. Spiritual Singers, WBZ Artist Recital, WABC

8.45 A.M. EDT; 7.45 EST; 6.45 CT

Safety Crusaders, WBZ Radio Spotlight, WABC

9 A.M. EDT; 8 EST; 7 CT

Balladeers, WEAF WGY Children's Hour, WJZ WBZ KDKA WHAM, WLW, 1 h.

Sunday Morning at Aunt Susan's, WABC WCAU WPG, 1 h.

9.15 A.M. EDT; 8.15 EST; 7.15 CT

Cloister Bells, WEAF WGY

9.30 A.M. EDT; 8.30 EST; 7.30 CT

Ellsworth Vines, Jr., "Correct Footwork," WEAF WEEI WTIC WGY

9.45 A.M. EDT; 8.45 EST; 7.45 CT

Alden Edkins, baritone, WEAF WTIC WGY

10 A.M. EDT; 9 EST; 8 CT

Sabbath Reveries, Dr. C. L. Goodell, WEAF WTIC WGY, 30 m.

Southernaires, WJZ WBZ WHAM WBAL, 30 m.

Columbia's Church of the Air, WABC WCAU Watch Tower, WPG

10.30 A.M. EDT; 9.30 EST; 8.30 CT

Mexican Orchestra, WEAF WEEI WTIC, WLW, 30 m.

Samovar Serenade, WJZ WBAL WHAM Melody Parade, WABC WCAU WHAM

10.45 A.M. EDT; 9.45 EST; 8.45 CT

Ben Alley with Music, WABC Alexander Semmler, pianist, WCAU WPG

11 A.M. EDT; 10 EST; 9 CT

News and Vagabonds, WEAF WTIC, 30 m.

Service from Old South Church, WEEI 1h., 15 m.

Union College Chapel Service, WGY, 1 h. News and Morning Musicale, WJZ WBZ WHAM WBAL WLW

Calvary Episcopal Church, KDKA Children's Program, WABC, 1 h.

Children's Hour, WCAU Colton Manor Ensemble, WPG, 30 m.

11.15 A.M. EDT; 10.15 EST; 9.15 CT

Hall and Gruen, WEAF WTIC Morning Musicale, WJZ WHAM

Safety Crusaders, WBZ

11.30 A.M. EDT; 10.30 EST; 9.30 CT

Major Bowles Capitol Family, WEAF WTIC WGY, 1 h.

Poet Prince, WJZ WHAM WLW Radio Nimblerites, conducted by Everett Smith, MICROPHONE columnist, WBZ

Lake Avenue Baptist Church, WHAM, 1 h., 30 m.

Salt Lake City Tabernacle Choir, 1 h., WABC WCAU from 12.15

11.45 A.M. EDT; 10.45 EST; 9.45 CT

Phantom Strings, talk by Col. Bates of Grand Army, WJZ WHAM WBAL WLW, 30 m.

Organ, WBZ, 30 m.

12.15 P.M. EDT; 11.15 A.M. EST; 10.15 CT

Weather, schoolmaids, WGY Gould and Shetter, WJZ WBAL WHAM WLW

Time, Weather, Temperature, WBZ Variety, WMCA

12.30 P.M. EDT; 11.30 EST; 10.30 CT

University of Chicago Round Table, WEAF WEEI WGY WTIC

"Our Elsie"



ELSIE FERGUSON, noted actress, is starred each Sunday at 9 P.M. on the Family Theatre program, broadcast on the CBS-WABC chain.

6.15 P.M. EDT; 5.15 EST; 4.15 CT

Egon Petri, pianist, WJZ WHAM KDKA WBAL, 45 m.

Bill Williams, sports, WBZ Ponce Sisters, WLW

William Saalman, baritone, WPG Louise Brabant, soprano, WGN

6.30 P.M. EDT; 5.30 EST; 4.30 CT

Our American Schools, WEAF WTIC WGY, 30 m.

Musical Tunes, WEEI Time, Weather, WBZ

Anson Weeks' Orchestra, WGN Smiling Ed McConnell, WABC WCAU

Harold Stern's Orchestra, WOR, 30 m. Voices and Organ, WLW, 30 m.

The Abels, WPG "Criminal Court," drama, WMCA, 30 m.

6.45 P.M. EDT; 5.45 EST; 4.45 CT

Stars of Hollywood, WEEI Jaysnoff Sisters, WBZ

"Poet's Gold," David Ross, WABC WCAU CCC Quartette, WPG

7 P.M. EDT; 6 EST; 5 CT

"K-7" Drama, WEAF WTIC WGY, 30 m. Merry-Go-Round, WEEI

Chas. Previn's Orchestra, Mme. Gitta Gradova, pianist, WJZ WBZ WHAM WLW KDKA, 30 m.

Nick Lucas, songs, WABC WPG Comedy Stars of Hollywood, WCAU

Milban String Trio, WOR Five O'Clock Melodies, WHAS, 30 m.

Heroes of Israel, "Maharan," WMCA

7.15 P.M. EDT; 6.15 EST; 5.15 CT

Carlile and London, Warwick Sisters, WABC WCAU WPG

Current Jewish Events, WMCA

7.30 P.M. EDT; 6.30 EST; 5.30 CT

Marion McAfee, soprano, WEAF WGY Garden talk, WEEI, 30 m.

Sports, WTIC Joe Penner, Harriet Hilliard and Ozzie Nelson's Orchestra, WJZ WBZ WHAM

KDKA WLW, 30 m. Chicago Knights, WABC WCAU, 30 m.

Stevens Hotel Ensemble, WGN Hotel Morton Orchestra, WPG, 30 m.

The Bible Camera, WOR Ted Black's Orchestra, WMCA

7.45 P.M. EDT; 6.45 EST; 5.45 CT

Wendall Hall, songs, WEAF WTIC WGY Baseball scores, WEEI

Piano Duo, WOR Leon Friedman's Orchestra, WMCA

Palmer House ensemble, WGN

8 P.M. EDT; 7 EST; 6 CT

Jimmy Durante and Rubinoff's Orchestra, WEAF WTIC WGY WLW, 1 h.

The Jenny Concert, WEEI, 1 h. "Goin' to Town," Ed Lomry, WJZ WHAM, 1 h.

Sports, KDKA Book talks, WGN

Voice of Columbia, George Jessel, and Revue, WABC WCAU

"Melodoscope," WOR, 1 h. Three Little Funsters, WMCA

8.15 P.M. EDT; 7.15 EST; 6.15 CT

Debut Night, KDKA, 45 m. Concert Hour, WGN, 45 m.

Natalie Norman, songs, WMCA

8.30 P.M. EDT; 7.30 EST; 6.30 CT

Golden's Orchestra, WMCA

8.45 P.M. EDT; 7.45 EST; 6.45 CT

Main St. Songwriter, WMCA

9 P.M. EDT; 8 EST; 7 CT

Merry-Go-Round, Tamara, WEAF WTIC WGY, 30 m.

Fox Revue, WEEI Gulf Headliners with Irving Berlin, WJZ

WBZ WHAM KDKA WBAL WLW, 30 m.

Seymour Simon's Orchestra, WGN, 30 m. Family Theatre, Elsie Ferguson, WABC

WCAU, 30 m. Songs, music, WMCA, 30 m.

Nos Artistes Montrealais, CKAC, 30 m.

Educational

Sunday, June 3

5 P.M. Talk by Dr. Israel Goldstein, president of the Jewish National Fund, CBS-WABC

Monday, June 4

10.45 P.M. "What President Roosevelt Has done for Farm Prices," talk by Representative Magnue Johnson of Minnesota, CBS-WABC

Tuesday, June 5

10.30 P.M. "The Coming International Labour Conference," talk by S. Mack Eastman, of the International Labour Office in Geneva, NBC-WJZ

Orchestral Gems, WTIC, 30 m. News and Ben Pollock's Orchestra, WJZ WBZ WHAM, 30 m. Tea Leaves and Jade, WLW, 30 m. Chates Barnett's Orchestra, WMCA, 30 m. Week's, Garber's and Weem's Orchestras, WGN, 1 h., 15 m. Jimmy Lunceford's Orchestra, WMCA, 30 m.

11.45 P.M. EDT; 10.45 EST; 9.45 CT

Johnny Johnson's Orchestra, WABC WCAU WPG

12 M. EDT; 11 P.M. EST; 10 CT

Anniversary Program, WFRB, Gov. Albert C. Ritchie of Maryland, Baltimore Music Club, WEAF WGY, 1 h. Jimmy Lunceford's Orchestra, WJZ WBZ WHAM WBAL KDKA, 30 m. News, Purcell's Orchestra, WLW Red Nichol's Orchestra, WABC WCAU WPG

Anthony Trini's Orchestra, WOR Bob Fallon's Orchestra, WMCA, 30 m.

12.30 A.M. EDT; 11.30 EST; 10.30 CT

Clyde Lucas' Orchestra, WJZ WBZ WHAM, 30 m.

Sammy Kaye's Orchestra, WLW Earl Hines' Orchestra, WABC WCAU WPG

Teddy Hill's Orchestra, WMCA, 30 m.

Final Broadcast Of War Series

"Pistols At Dawn," dramatic climax of the current "Roses and Drums" dramatic serial of the Civil War, will be broadcast over the WABC-Columbia network on Sunday, June 3, at 6 P.M. After this program the series will be discontinued for the Summer.

Station Directory

Station	Chain	K.C.	Watts	Location
CFRB	CRC & CBS	690	10,000	Toronto
CKAC	CRC & CBS	750	5,000	Montreal
KDKA	NBC	980	50,000	Pittsburgh, Penn.
KMOX	CBS	1090	50,000	St. Louis, Mo.
KSD	NBC	550	500	St. Louis, Mo.
KYW	NBC	1020	10,000	Chicago, Ill.
WAAB	CBS & YN	1410	500	Boston
WABC	CBS Key	860	50,000	New York
WBAL	NBC	1060	10,000	Baltimore
WBZ	CBS	770	25,000	Chicago, Ill.
WBTV	CBS	920	500	Needham
WCAU	NBC	1080	25,000	Charlotte, N. C.
WCCO	CBS & DIX	990	50,000	Boston
WCBS	CBS	1170	50,000	Philadelphia
WCNC	NBC & NEN	810	50,000	Minneapolis, Minn.
WDCB	NBC & YN	940	1,000	Portland, Me.
WEAF	CBS & YN	1330	1,000	Hartford
WEAN	NBC Key	660	50,000	New York
WEEI	CBS & YN	780	500	Providence
WENR	NBC & NEN	590	1,000	Boston
WFLA	NBC	870	50,000	Chicago, Ill.
WFLR	CBS & YN	1450	500	Manchester, N. H.
WGN	NBC	620	25,000	Clearwater, Fla.
WGST	NBC	1450	1,000	Cleveland, Ohio
WGY	CBS	720	50,000	Chicago
WHAM	NBC	890	500	Atlanta, Georgia
WHAS	NBC	790	50,000	Schenectady, N. Y.
WHDH	CBS & DIX	1150	50,000	Rochester, N. Y.
WHEB	FBC	820	50,000	Louisville, Ky.
WHK	CBS	830	1,000	Boston
WHY	CBS	740	250	Portsmouth, N. H.
WICC	CBS & YN	1390	2,500	Cleveland, Ohio
WJAR	NBC & NEN	690	500	Bridgport, Conn.

Radio Lane

By Jimmy J. Leonard

SINCE YOU have read in The MICROPHONE some weeks ago that station WOR was planning to broadcast experimental facsimile line drawings of their various performers, many readers have been led to believe that they will be forced to purchase entirely new radios for picking up this revolutionary experiment. Designers of the receiving apparatus inform us that it will cost but \$10 to add the reception box to their present radio. At present the whole affair is but an experiment which will take place quite late at night or early in the morning during the Autumn. If these broadcasts should prove a success, they will be run throughout regular programs.

That boy JIMMY MELTON, even though he is temperamental, is shoving himself right ahead. MELTON is plying his songs on The Family Theatre spot as well as on that program which is making a great name for itself, the NBC operettas. When LANNY ROSS hits it for Follywood, JIMMY MELTON will step into his shoes on the June Showboat brigade. LANNY ROSS is going to do a college single.

Some great mind devised a scheme which will give the NBC radio heads some ideas on the public's attitude toward their presentations. While the studio audience is awaiting the opening of a program, pages race through the studios with questionnaires. The questions have to deal with the types of programs, types of people, what is liked and what is not. Also the audience is asked whether they listen during the Summer and whether they own an automobile radio. As the majority of the studio listeners hail from the country, their suggestions may serve as the stimulant to better programs.

The DICK TRACY skit originating at WBZ rapidly is gaining in popularity. So much so that they are planning to take it to New York. That is, if the sponsor holding the New York time is really serious about allowing Baby ROSE MARIE to cease her squalling. I knew the old adage, children should be seen and not heard, would win out.

GRETE STUECKGOLD will be heard for some time on that cigarette program. She has had her contract renewed. And so has HARRY HORLICK. So, too, has FRANK PARKER, who sings with HORLICK. UKE LEW CHALUE of WHDH has written a beginners' book on the ukulele. UKE LEW has been playing the uke so long he feels that anyone who cannot play this instrument is losing one of life's prime joys. With his little ukulele under his elbow, LEW has invaded all big-time vaudeville as well as the sanctity of motion picture studios.

EDWIN FRANKO GOLDMAN is returning to the air on June 20 over the NBC. He plans to do two concerts a week. LEON BELASCO has arrived back from Paris, chock full of tunes. ALBERT SPALDING ends his series of concerts about the latter part of July.



JAMES MELTON

MICROPHONE



VOLUME III Saturday, June 2, 1934 NUMBER 22

Publisher, JOHN K. GOWEN, Jr. Business Manager, PHILIP N. HOBSON Editor, G. CARLETON PEARL Managing Editor, MORRIS HASTINGS A weekly newspaper, The MICROPHONE is published every Saturday at Boston, Massachusetts, by The MICROPHONE, Inc.

Entered as second class matter August 11, 1933, at the post office at Boston, Massachusetts, under the Act of March 3, 1879.

The MICROPHONE will not be responsible for unsolicited manuscripts unless they are accompanied by return postage.

Subscription for one year, \$1.50 postpaid. Single copies, five cents each.

Advertising rates on application to the Business Manager.

Offices, No. 34 Court Square, Boston, Massachusetts.

Telephones (connecting all departments) LAfayette 2860 and 2861.

Out With The Bunk!

DE-BUNKING of radio proceeds with pleasurable rapidity. Comedians who are not funny go by the board; smug announcers who need a new hat each week to care for the growth of their cranium no longer enjoy even fancied popularity.

Radio is out of its swaddling clothes. No longer an infant industry, the public expects it to do something more than merely furnish sounds over the air.

Critical standards rule the air. Advertising agencies, in the opinion of the listening public, have failed to establish themselves as the final arbiters of what the public should hear.

Poisonous plugs are shorter, less obnoxious, more bearable. Arthur Brisbane, Hearst editorial writer, is fond of saying that in the long run the public gets what it deserves.

The public deserves better radio. It is getting better radio.

If it does not get the kind of radio it expects, in the long run, the public will take over the radio, as was done in England, and run it for its own interests. Then no one will make a profit from it.

And perhaps more persons will be better satisfied.

Mature Mental Age

THE MICROPHONE, original United States Radio Newspaper, has no competitors. It is the only national radio newspaper in this country. There are several regional weeklies, several "fan" publications. There is at least one other radio weekly that fancies itself to be predominant in the field, that is predicated, like certain "movie fan" publications, on the erroneous impression that the general public has the mind of a 12-year-old child. The MICROPHONE is intended to appeal, and does appeal, to citizens of mature mental age. They are in the majority.

Experimental Program Laboratory Launched

STATION WBT, Charlotte, N.C., 50,000 watt Southern key of Columbia, has plans for five experimental program laboratory periods a week bringing into use the cream of the auditioned talent. The programs will be billed as "The WBT Experimental Program Laboratory."

The idea originated with W. A. SCHUDT, Jr., General Manager of WBT. The station each week gives auditions to considerable talent. Much of this is good but never goes on the air because the demands of commercial radio are not equal to the available supply of talent.

The new experimental periods will attempt to uncover new and interesting radio attractions in the Carolinas. Audiences will be asked to pass on the ability of the performers. Favorable letters will be considered as a proper demand for an encore and he performer will be given another spot.

Auditions are necessary before an act can be considered for the laboratory programs. The series will be given each

Wednesday from 2 to 4.40 P. M. J. HOLLIS SMITH, Production Manager, will supervise the laboratory programs and he and Program Director LEE EVERETT will pass on all talent before it becomes a part of the laboratory period.

Mr. SMITH will write continuity to blend the acts into a running show. Those taking part in these periods will have their names, addresses and business connections broadcast. A brief history of training and entertainment careers also will be given to listeners.

When the demand appears, outstanding amateur performers will receive the calls for commercial shows.

Plans call for one period each week of experimental drama with the Charlotte Little Theatre invited to present short dramas, including sketches patterned after the EUGENE O'NEILL type of play, with the asides adapted for radio presentation.

The laboratory will present a constantly changing daily program.

In discussing the new pro-

grams, Mr. SCHUDT said:

"I believe that this is the broadest movement ever made to encourage amateur talent in the Carolinas. Anyone with genius or genuine ability will have their chance to display it before the microphone, with the audience as judge."

Another type of program which is being experimented with is a one-minute drama. Included in this miniature play is an exciting action story and the history of a colorful personality. FRANK BUCK, wild animal hunter.

Studiosity

By Les Troy

MARY ISN'T "small" any more. For little Miss MARY SMALL, whom you are liable to hear on Sunday afternoons, has grown more than five inches taller in the last eight months, since she started her career as a radio singer. MARY is inclined to the "Topsy" theory of growth. I think maybe reaching for the microphone had something to do with it. What's more, MARY was 12 years old just a short while ago.



MARY SMALL

HELEN CLAIRE, who recently became the "Betty Graham" of the "Roses and Drums" sketches, is one person who doesn't have to worry about getting the wrong number, providing she phones her family.

Her parents live in a quiet little town known as Union Springs, Alabama. Everybody knows everybody else. She recently called

and got the telephone operator of Union Springs.

Said the operator:

"Nobody's home just now, Miss Helen, but you-all wait a minute and ah'll see if ah can find yo' father fo' you."

There was a pause of a few minutes. Then the operator spoke again:

"Ah'm sorry, Miss Helen, ah can't find him. Ah can see from mah window that he ain't down by the hotel nor the post-office. He must be up at one o' his friend's house havin' an egg nog. Ah'll tell him yo' called."

And now I hear from my own personal New York correspondent, ALOYSIUS GLUFFY. He reports that ROSA PONSELLE is continuing her daily bicycle rides around the terrace of her penthouse to keep in good physical condition for her broadcasts. Come Spring, GLUFFY always does the roof tops.

Here's another note from GLUFFY, told in his own inimitable style. I quote:

"Six men and two young women in a semi-circle in a Radio City studio. They are reading the script of a radio drama. One of them, temporarily out of the picture, is buried in a newspaper. The others read their lines in low voices.

"Occasionally the director says 'boom, boom,' in a conversational tone and, in an off-hand way, makes a suggestion to one or another of the readers. The studio is cool and quiet, and the low monotone of the voices creates an atmosphere of peace and drowsiness."

(Stop it ALOYSIUS, I'm going to sleep.)

"Guess what the show is? It's the Bar X Days and Nights, one of the most raucous Western thrillers ever to fill a carrier wave."

To Subscribe to The Microphone

Fill out the blank and mail with cash, money order or check to The MICROPHONE, 34 Court Square, Boston, Mass.

(Please print)

Name.....

Street.....

City or Town.....

State.....

(Subscription \$1.50 per year, postpaid)

Monday, June 4 - Owen D. Young on NBC-WJZ at 12.30 P.M.

Highlights

- P.M.**
- 12.30—Owen D. Young, NBC-WJZ
 - 3.40—Finnish National Orchestra, from London, NBC-WEAF
 - 4.15—Child Painters discuss art, CBS-WABC
 - 7.45—"Taxi," Max Baer, NBC-WJZ
 - 8.00—Soconyland Sketch, NBC-WEAF
 - 8.30—Bing Crosby and Mills Brothers, CBS-WABC
 - 9.00—Rosa Ponselle, CBS-WABC
 - 9.30—The Big Show, Helen Menken, CBS-WABC
 - 10.00—Symphony Orchestra, Dr. Walter Damrosch, conductor, NBC-WJZ

(All programs are listed in Eastern Daylight Saving Time. Eastern Standard Time is one hour earlier; Central Time is two hours earlier.)

- 6.45 A.M. EDT; 5.45 EST; 4.45 CT
Tower Health Exercises, WEAFF WEEI WGY, 1 h
- 7 A.M. EDT; 6 EST; 5 CT
Prayer, WLW
Rise and Shine, WBZ, 30 m.
Musical Clock, WTIC
- 7.30 A.M. EDT; 6.30 EST; 5.30 CT
Top o' the Morning, WLW
Yoichi Hiraoka, xylophone, WJZ
Musical Clock, WBZ, 30 m.
Organ Reveille, WABC
- 7.45 A.M. EDT; 6.45 EST; 5.45 CT
Pollock and Lownhurst, WEAFF WGY
Morning Musicals, WEEI
Jolly Bill and Jane, WJZ WBAL
- 8 A.M. EDT; 7 EST; 6 CT
Organ Rhapsody, WEAFF WTIC, 30 m.
Musical Clock, WGY
Prayer, WLW
Morning Devotions, WJZ
S. B. Rideout and current events, WEEI
Program revue and Salon Musicale, WABC, 30 m.
- 8.15 A.M. EDT; 7.15 EST; 6.15 CT
Devotions, WLW
Don Hall Trio, WJZ WBZ WHAM WBAL
At the Console (WMAS from 8.30)
- 8.30 A.M. EDT; 7.30 EST; 6.30 CT
Cheerio, WEAFF WEEI WTIC WGY WLW, 30 m.
Lew White at the dual organ, WJZ WHAM WBAL, 30 m.
Weather, WBZ
Sunny Melodies, WABC, 30 m.
- 8.45 A.M. EDT; 7.45 EST; 6.45 CT
Strolling Tom, WBZ
- 9 A.M. EDT; 8 EST; 7 CT
Morning Glories, WEAFF WLW
Bradley Kincaid, songs, WGY
Breakfast Club, orchestra, WJZ WBAL, 1 h.
WHAM (WBZ from 9.30)
The Naturals, WABC
- 9.15 A.M. EDT; 8.15 EST; 7.15 CT
Laudt Trio and White, WEAFF WEEI WGY WLW
Madison Ensemble, WABC
- 9.30 A.M. EDT; 8.30 EST; 7.30 CT
Nancy Noland, songs, WEAFF WTIC
Little Jack Little's Orchestra, WGY
Hymns of All Church, WLW
Metropolitan Parade, WABC, 45 m.
- 9.45 A.M. EDT; 8.45 EST; 7.45 CT
Florinda Trio, WEAFF WTIC WLW
Devotions, WGY
News, KDKA
- 10 A.M. EDT; 9 EST; 8 CT
Breen & de Rose, WEAFF WEEI WTIC WGY
String Trio, WLW
Harvest of Song, WJZ WBZ WBAL KDKA
- 10.15 A.M. EDT; 9.15 EST; 8.15 CT
Clara, Lu 'n' Em, WEAFF WEEI WLW
Holman Sisters, WJZ WHAM
Duke Dewey's Orchestra, WBZ
Bill and Ginger, WABC WCAU
Bob White, WTIC
- 10.30 A.M. EDT; 9.30 EST; 8.30 CT
News and Morning Parade, WEAFF (WEEI from 10.34)
Market Basket, WGY
Bridge talk, WEEI
Organ, WLW
Today's Children, drama, WJZ WBZ WHAM WBAL KDKA
News and The Merry-makers, WABC WCAU
Mixing Bowl, WTIC
- 10.45 A.M. EDT; 9.45 EST; 8.45 CT
Skip, Step and Happiana, WGY
Jack and Loretta Clemens, WJZ
News, WBZ
Jester's, WLW
Sammy Fuller, KDKA
Quarter Hour of Waltzes, WABC WCAU
- 11 A.M. EDT; 10 EST; 9 CT
U. S. Navy Band, WEAFF WGY WTIC WTAM, 1 h.
Radio School of Cookery, WEEI
Violinist, WLW
The Wife Saver, WJZ
The Honey-mooners, Grace and Eddie Albert, WBZ WHAM
Cooking Closeups, WABC WCAU

- 11.15 A.M. EDT; 10.15 EST; 9.15 CT
Platt and Nierman, piano duo, WJZ WBZ WHAM KDKA
News and livestock, WLW
Pedro de Cordoba and Osborne's Orchestra, WABC WCAU
- 11.30 A.M. EDT; 10.30 EST; 9.30 CT
Charioteers, WLW
Rhythm Ramblers, WJZ KDKA WBAL, 30 m. (WBZ WHAM from 11.45)
Metropolitan Stage Show, WBZ
Tony Wons, WABC
- 11.45 A.M. EDT; 10.45 EST; 9.45 CT
Painted Dreams, WGN, WLW
Peggy Keenan and Sandra Phillips, pianists, WABC
- 12 N. EDT; 11 A.M. EST; 10 CT
Gene Arnold's Commodores, WEAFF WEEI WGY
Silver Strains, WTIC
Oklahoma Bob Albright, WLW
Morton Bowe, tenor, WJZ WHAM
The Monitor Views the News, WBZ
"Voice of Experience," WABC WCAU
Handicraft Club, WOR
Lyric Strings, trio, WMCA
- 12.15 P.M. EDT; 11.15 A.M. EST; 10.15 CT
Rex Battle's Ensemble, WEAFF WEEI WTIC
Martha Hal, WGY
Morin Sisters, WJZ WHAM
Weather; MSC Farm Forum, WBZ
Quartette, WLW
Betty Barthell, WABC WCAU
"Home Redecorating," WOR
Chuck Richards, songs, WMCA
- 12.30 P.M. EDT; 11.30 EST; 10.30 CT
Weather, Markets, WEAFF WEEI KDKA
U. of Nebraska Commencement, Address by Owen D. Young, Jr., WJZ WBZ WHAM
Bond of Friendship, WLW
Microphone Gossip, WABC
Dion Kennedy, organ, WOR, 30 m.
Cloutier's Orchestra, WTIC, 40 m.
Stocks, WMCA, 30 m.
- 12.45 P.M. EDT; 11.45 EST; 10.45 CT
Prominent Women in Washington, WEAFF WJAR
Cabot and Del Castillo, WEEI, 30 m.
Radio Gang, WGY
Texas, trio, WLW
Mischa Raginsky's Ensemble, WABC WCAU
- 1 P.M. EDT; 12 N. EST; 11 A.M. CT
Waldorf-Astoria Orchestra, WEAFF WEEI WTIC from 1.10
Vagabonds, WGY
Ohio Farm Bureau talk, WLW
MSC Farm Forum, WBZ, 30 m.
Velazco's Orchestra, WABC, 30 m.
- 1.15 P.M. EDT; 12.15 EST; 11.15 CT
River, market, live stock reports, WLW
The Honorable Archie, WJZ
N. J. League of Women Voters, WOR
News, WMCA
- 1.30 P.M. EDT; 12.30 EST; 11.30 CT
Personality and Health, WEAFF
New England Kitchen, WEEI, 30 m.
WGY farm program, WGY, 30 m.
National Farm and Home Hour, WJZ WBZ WHAM WBAL WLW, 1 h.
Mischa Raginsky, WABC WCAU, 30 m.
Theatre Club of the Air, WOR
- 1.45 P.M. EDT; 12.45 EST; 11.45 CT
String Ensemble, WOR
- 2 P.M. EDT; 1 EST; 12 N. CT
Revolving Stage, WEAFF WEEI WTIC, 45 m.
Lauren Bell, baritone, WGY
Ann Leaf, organist, WABC WCAU
15 m.
Dr. Arthur Frank Payne, WOR
"Dogs," WMCA
- 2.15 P.M. EDT; 1.15 EST; 12.15 CT
N. E. Kitchen, WEEI
Household Chat, WGY
Romance of Helen Trent, WABC WCAU
Sports talk, WMCA
Virginians, male quartet, WOR
- 2.30 P.M. EDT; 1.30 EST; 12.30 CT
Pendarvis' Dance Orchestra, WLW
Smackout, comedy, WJZ
Lou Bell, pianist, WBZ
Home Forum, KDKA
School of the Air, Science, WHAM
Netherland Plaza Orchestra, WLW
Emery Deutsch's Orchestra, WABC, 30 m.
McCulley Players, WMCA, 30 m.
Martha Deane, WOR, 30 m.
- 2.45 P.M. EDT; 1.45 EST; 12.45 CT
Ma Perkins, WEAFF WEEI WGY WLW
Richard Maxwell, tenor, WJZ WBZ WHAM
Talk, Morgan Memorial, WTIC
- 3 P.M. EDT; 2 EST; 1 CT
Bill Whitley, WEAFF WTIC WLW
Talk, WEEI
Albany on Parade, WGY
"The Fortune Hunter," Winchell Smith, WJZ KDKA WBAL WHAM, 1 h.
Ye Old Tea Shoppe, WBZ
Camay Minstrel, WLW
Oahu Sereaders, WABC
"Women and Money," WMCA
- 3.15 P.M. EDT; 2.15 EST; 1.15 CT
The Wise Man, WEAFF WEEI WJAR WCHS
WTIC WTAG
Health Hunters, sketch, WGY
Low Down, WLW
Sandy MacFarlane, WBZ
Voice of Experience, WABC
Roxo, "Your Lover," WOR
Pianologue, WMCA

Circus Days



"UNCLE BOB" SHERWOOD, famous ring master, barker and story teller who presides over the Dixie Circus programs carried by the CBS-WABC chain on Mondays at 6.45 P.M.

- 3.30 P.M. EDT; 2.30 EST; 1.30 CT
Women's Radio Revue, WEAFF WEEI WGY WTIC
Sputter and Whine, WLW
Home Forum-Cooking School, WBZ, 30 m.
Poetic Strings, WABC, 30 m.
Stocks, WMCA
Spring Flower Show, WOR
- 3.45 P.M. EDT; 2.45 EST; 1.45 CT
Finnish National Orchestra, broadcast from London, WEAFF WEEI WGY WTIC
King, fads, jester, WLW
Baseball, Chicago vs. Boston, WGN
Mandoliers, WMCA
Afternoon Musical, WOR, 45 m.
- 4 P.M. EDT; 3 EST; 2 CT
Gypsy Orchestra, WEAFF WGY
Stock market quotations, WEEI
Betty and Bob, WJZ WLW WHAM
Walter Dawley, organist, WTIC, 30 m.
Bill Huggins, songs, WABC WCAU
Songs, music, WMCA, 30 m.
- 4.15 P.M. EDT; 3.15 EST; 2.15 CT
Story program, WEAFF
Music Clubs Program, WEEI
Gale Page, songs, WJZ WHAM
Hobby Club, WBZ
Matinee Highlights, WLW, 30 m.
Child Painters, Class of Van Perrine, WABC
- 4.30 P.M. EDT; 3.30 EST; 2.30 CT
Tea Dansant, WEAFF WEEI
Vagabonds, WGY
Orlando's Cosmopolitans, WJZ WBZ WHAM
Chicago Variety, WABC WLW, 30 m.
Variety, WTIC, 30 m.
Marimba Orchestra, WOR, 30 m.
Instrumental Trio, WMCA
- 4.45 P.M. EDT; 3.45 EST; 2.45 CT
The Lady Next Door, WEAFF WEEI
Stock, WGY
Morgan Memorial Talk, WTIC
Health Hints, Dr. Morris Fishbein, WJZ WBZ WHAM
The Mystery Girl, WMCA
- 5 P.M. EDT; 4 EST; 4 CT
Don Bigelow's Orchestra, WEAFF WTIC WLW, 30 m.; WGY from 5.15
Phil Saltman, pianist, WEEI
Palmer Clark's Orchestra, WJZ WHAM KDKA, 30 m.
Agriculture Markets, WBZ
The Dictators, WABC
Sally's Party, WMCA, 30 m.
- 5.15 P.M. EDT; 4.15 EST; 3.15 CT
Mass. Highway Accident Survey, WEEI
The Monitor Views the News, WBZ
Skiy, WABC WCAU
"Story Teller's House," WOR
- 5.30 P.M. EDT; 4.30 EST; 3.30 CT
Frank Merriwell's Adventures, WEAFF WEEI WGY WTIC
The Singing Lady, WJZ WBZ WHAM WLW WGN
Jack Armstrong, "All-American Boy," WABC WCAU
Main St. Song Writer, WMCA
- 5.45 P.M. EDT; 4.45 EST; 3.45 CT
Bunkhouse Songs, WEAFF
Barry Mirkin, baritone, WEEI
Melodies of Romance, WTIC
Bradley Kincaid, mountain songs, WGY
Orphan Annie, WJZ WBZ WHAM KDKA WLW WGN
Gordon, Dave and Bunny, WABC WCAU
"Dancing Around," WOR
People Who Make News, WFEA
Dr. Paul V. Winslow, WMCA
Helen and Bob, WJZ WBZ WBAL
- 6 P.M. EDT; 5 EST; 4 CT
Peter Van Steden's Orchestra, WEAFF WLW, 30 m.
Evening Tattler, WEEI
Irene Beasley, songs, WJZ WBZ WBAL
Wrightville Clarion, WTIC, 30 m.
Camera Club, Luis Marden, WBZ
Buck Rogers, WABC WCAU
Orchestra, WGN, 30 m.
Uncle Don, WOR, 30 m.
Ted Black's Orchestra, WMCA, 30 m.

- 6.15 P.M. EDT; 5.15 EST; 4.15 CT
Joe and Eddie, WGY
U. S. Army Band, WJZ WHAM, 30 m.
Bill Williams, WBZ
Sports, weather, KDKA
Bobby Benson and Sunny Jim, WABC WCAU
- 6.30 P.M. EDT; 5.30 EST; 4.30 CT
Grandmother's Trunk Narration, WEAFF WTIC
Scots, Current Events, WEEI
Helen Mae, soprano, WGY, 30 m.
Jack Armstrong, WLW
Three X Sisters, WJZ KDKA
Time, sports, weather, WBZ
Charles Barnett's Orchestra, WABC
Jack Arthur, baritone, WOR
Children's Club, WHAS, 30 m.
Heat Waves, trio, WMCA
- 6.45 P.M. EDT; 5.45 EST; 4.45 CT
Horse Sense Philosopher, WEAFF
Frojo program, WEEI WTIC
Lowell Thomas, WJZ WBZ WLW
"The Dixie Circus," Uncle Bob Sherwood, WABC WCAU, 30 m.
Ray Perkins, Fun Maker, WOR
Weather and Farm Forum (M S C), WBZ
Dixie Circus, WABC WMAS, 30 m.
Albany on Parade, WGY
Dr. H. I. Strandhagen, WOR
Five Star Final, WMCA
- 7 P.M. EDT; 6 EST; 5 CT
Baseball Resume, WEAFF
Hollywood Comedy Stars, WEEI
Horse Sense Philosophy, WGY
Amos 'n' Andy, WJZ WBZ KDKA WLW
Five O'Clock Melodies, WHAS, 30 m.
Ford Frick, sports, WOR
Dick Mansfield's Orchestra, WMCA
- 7.15 P.M. EDT; 6.15 EST; 5.15 CT
Gene and Glenn, WEAFF WEEI WGY
Sports, WTIC
Baby Rose Marie, WJZ WHAM KDKA
Dick Tracy, Detective, WBZ
Joe Emerson's Orchestra, WLW
Just Plain Bill, WABC WCAU
Dance Music, WOR
Vagabond Singers, WMCA
- 7.30 P.M. EDT; 6.30 EST; 5.30 CT
Shirley Howard and the Jesters, WEAFF WTIC WGY
After Dinner Revue, WEEI
Pre-Race Program, Indianapolis Speedway, WJZ WHAM
Radio Nature League, WBZ
Bob Newhall, WLW
"Music on the Air," WABC WCAU
"Maverick Jim," drama, WOR, 30 m.
Voice of Jerusalem, WMCA
- 7.45 P.M. EDT; 6.45 EST; 5.45 CT
The Goldbergs, WEAFF WEEI WGY WTAM
Smooth Rhythms, WTIC
Al and Pete, WLW
Max Baer, "Taxi," WJZ WBZ WBAL KDKA WHAM
Boake Carter, news, WABC WCAU
Beauty Guild, WAAB WEAN
Arthur Lewis, orchestra, WMCA
- 8 P.M. EDT; 7 EST; 6 CT
Soconyland Sketches, William Griffith, Ed-Soconyland Sketches, "Twenty Pounds Reward," WEAFF WEEI WTIC WGY, 30 m.
Jan Garber's Orchestra, WJZ WBZ WHAM WBAL KDKA WLW, 30 m.
Mary Eastman, WABC
Irish Melodies, WPG
Dinner Concert, WHAS, 30 m.
Three Little Funsters, WMCA
- 8.15 P.M. EDT; 7.15 EST; 6.15 CT
Edwin C. Hill, WABC WCAU
Bridge Talk, WPG
Songs, WMCA
- 8.30 P.M. EDT; 7.30 EST; 6.30 CT
William Daly's Orchestra, WEAFF WEEI WTIC WGY WLW, 30 m.
Maple City Four, WJZ WBZ WBAL KDKA WHAM
Bing Crosby, Jimmy Grier's Orchestra and the Mills Brothers, WABC WCAU, 30 m.
"Sinfonietta," WOR, 30 m.
The Camcos, WPG
Lone Ranger, WGN, 30 m.
Crazy Range Ramblers, WMCA
- 8.45 P.M. EDT; 7.45 EST; 6.45 CT
Babe Ruth, baseball comment, WJZ WBZ WHAM WBAL KDKA
Radio Rod and Gun Club, WOR
More Than News, WMCA
- 9 P.M. EDT; 8 EST; 7 CT
A. & P. Gypsies, Frank Parker, WEAFF WEEI WTIC WGY, 30 m.
Minstrels, Gene Arnold, Joe Parsons, male Quartet, WJZ WBZ WHAM WBAL KDKA WLW, 30 m.
Rosa Ponselle, Andre Kostelanetz' Orchestra, WABC WCAU WPG WHAS, 30 m.
"The Champions," WOR, 30 m.
Songs, music, WMCA, 30 m.
- 9.30 P.M. EDT; 8.30 EST; 7.30 CT
Ship of Joy, Tommy Harris, tenor, WEAFF WEEI WGY, 30 m.
Travelers Hour, WTIC, 30 m.
Melody Moments, Pasternack's Orchestra, Theodore Karle, tenor, WJZ KDKA WHAM WBAL WLW, 30 m.
Twentieth Century Ideas, WBZ
The Big Show, Helen Menken, Gertrude Niesen and Erno Rapee's Orchestra, WABC WCAU, 30 m.
Harry H. Balkin, "Success," WOR
"1/2 Hour of Cheer," WMCA, 30 m.
Hotel Traymore Orchestra, WPG, 30 m.
- 9.45 P.M. EDT; 8.45 EST; 7.45 CT
Sammy Liner's Orchestra, WBZ
- 10 P.M. EDT; 9 P.M. EST; 8 CT
Gene Arnold, Lullaby Lady, male quartet, Eastman's Orchestra, Richard Bonelli, guest, WEAFF WEEI WTIC WGY WLW, 30 m.
Symphony Orchestra, Gladys Rice, Dan Gridley, WJZ WBZ KDKA WHAM, 45 m.
Wayne King's Orchestra, WABC WCAU, 30 m.

- Fabien Sevitzky's Orchestra, WOR
"Continental Cafe," WMCA
Young's Quartette, WPG
Lefty and Lucky, WOR
- 10.15 P.M. EDT; 9.15 EST; 8.15 CT
Ranny Weeks' Orchestra, WEEI
Three Tone, WPG
Harlan E. Reed, current events, WOR
Starlight Hour, WMCA
- 10.30 P.M. EDT; 9.30 EST; 8.30 CT
Gothic Echoes, Anonymous Singers, WEAFF
"Beauty that Endures," WEEI
WTIC Playhouse, WTIC, 30 m.
Music, WGY, 30 m.
Lillian Roth, Edward Neil, Jr., WABC
Musical Album, WCAU WHAS
Alfred Chigi, orchestra, WOR
Henry Thies Peppers, WLW, 30 m.
Dick Mansfeld's Orchestra, WMCA, 30 m.
Organ, WPG
- 10.45 P.M. EDT; 9.45 EST; 8.45 CT
Pan-American Concert, WEAFF WEEI WCHS
WTIC
Siberian Singers, WJZ WBZ WBAL
Rep. Magnus Johnson, "What President Roosevelt Has Done for Farm Prices," WABC
Variety, WTIC
Margaret Carlisle, WLW
Three Buccaneers, WOR
- 11 P.M. EDT; 10 EST; 9 CT
News and Harold Stern's Orchestra, WEAFF WTIC WGY
E. B. Rideout and scores, current events, Ranny Weeks, 30 m., WEEI
Doc Peyton's Orchestra, WGY, 30 m.
Cousin Bob, Hill Billy, WLW
Jack Berger's Orchestra, WJZ
Weather, sports, organ, WBZ
Sports, KDKA
"Fats" Waller, songs, WABC
Boake Carter, WCAU
"Moonbeams," WOR
Seymour Simon's Orchestras, WGN
Tom Devodier's Orchestra, WMCA
- 11.15 P.M. EDT; 10.15 EST; 9.15 CT
Hillbillies, WEAFF
News, WEEI
Poet Prince, WJZ
Joe Rine's Orchestra, WBZ
News and Orchestra KDKA
News and Reggie Childs' Orchestra, WABC WLW, 30 m.
Florence Richardson's Orchestra, WMCA
- 11.30 P.M. EDT; 10.30 EST; 9.30 CT
Clyde Lucas' Orchestra, WEAFF WEEI WTIC
Carl Hoffmayer's Orchestra, WABC
News and "Tennessee Valley Development," talk, WJZ
Lloyd Huntley's Orchestra, KDKA, 30 m.
Follies, WLW, 30 m.
Jimmy Lunceford's Orchestra, WMCA, 30 m.
Ted Weem's Orchestra, WGN, 30 m.
Alfredo Brito's Orchestra, WOR, 30 m.
- 11.45 P.M. EDT; 10.45 EST; 9.45 CT
"Public Housing in Action," talk by Mayor of Milwaukee, WEAFF
Carl Hoffmayer's Orchestra, WABC
Reggie Child's Orchestra, WEEI
- 12.30 A.M. EDT; 11.30 P.M. EST; 10.30 CT
Julie Stein's Orchestra, WEAFF, 30 m.
Gene Kardos' Orchestra, WABC, 30 m.
Roger Wolfe Kahn's Orchestra, WJZ WBZ, 30 m.

Two Doctors On Columbia Chain

Lectures by several noted doctors made during the annual convention of the American Medical Association in Cleveland will be broadcast over the CBS-WABC network on Tuesday, June 12, and Thursday, June 14.

Dr. N. B. VAN ETEN, of New York, will speak Tuesday from 10.45 to 11 A. M.

His subject is "The Family Doctor."

On Thursday, from 4 to 4.15 P. M., Dr. MORRIS FISHBEIN will speak.

Dr. VAN ETEN, vice-speaker of the Association's House of Delegates, is medical director of the Morrisania Hospital in New York and a trustee of the New York State Medical Society.

Dr. FISHBEIN, whose home is Chicago, is the editor of *Hygeia*, journal of the American Medical Association.

He is also the author of a number of medical books and the editor of a nationally syndicated newspaper column devoted to medical topics.

Tune In WAAB
FINANCIAL TALK
 Every Monday, 7.30 P. M.
MR. E. E. NAZZARO

Damrosch Brings the "Classics" to Farm Houses and Apartments

Conductor Still Sees Far Ahead

To describe the variety of audiences that Dr. WALTER DAMROSCH used to reach when he first took his symphony orchestra on tour many years ago, somebody wrote that he brought MOZART to mining camps and WAGNER to the wilderness.

Now, every Monday night over an NBC-WJZ network, he not only gets the ear of the American worker with classics but "produces" ROMBERG in the ranch-house and GERSHWIN in the gameroom of the suburban home.

It is friendly familiar music that is heard Monday at 10.00 P.M., E.D.T., in the "Packard Presents Dr. WALTER DAMROSCH" program, which is the only symphonic series with commercial sponsorship heard this Summer over an NBC network.

Each week the NBC musical counsel selects also a number by a contemporary composer living in America and identified with the task of writing our musical history.

And this kind of number Dr. DAMROSCH presents in such a way that it may remain popular with music lovers for many years to come.

Such contemporaries as FRIML or CHARLES MARTIN LOEFFLER, who wrote the "La Vilanelle du Diable" which recently was given by Dr. DAMROSCH, have their day in court with the American radio audience as jury, along with BEETHOVEN and MENDELSSOHN.

A Pioneer

Thus we find Dr. DAMROSCH pioneering in American music every Monday night, reaching new groups of music lovers with new compositions, just as he did years ago in a much more limited field when he gave New York its first taste of the symphonic work of BRAHMS, TSCHAIKOVSKY and ELGAR.

Dr. DAMROSCH brings to the Packard program on Monday nights the enthusiasm that made an international success of the NBC Music Appreciation Hour, which recently finished its sixth consecutive season for the school children of America.

With hardly a pause, he went from the task of guiding and stimulating the musical tastes and appetites of millions of boys and girls to the equally congenial work of bringing fine music on regular broadcasts through the Summer to the American home.

Dr. DAMROSCH's is now the largest orchestra on the air which is organized exclusively for broadcasting. There are 75 members of his symphony.

Dr. DAMROSCH does not confine the activities of this group of artists to the symphonic field. He selects at will numbers from classification.

He also calls in soloists for his scholarly popular programs

CAROL DEIS, soprano, frequently is heard on these programs.

He also has the co-operation of several choral groups. One of these is the chorus of the Metropolitan Opera House. Another will be the chorus of the Art of Musical Russia, the opera company which gave performances in

A Benevolent Maestro At Home



DR. WALTER DAMROSCH, veteran conductor, whose pioneer work on the radio has won him affection and admiration.

New York last Winter.

Other Orchestras

As another indication of the network—not the technical one of wires—which Dr. DAMROSCH uses in his Spring programs, we find him bringing in other famous orchestras to add to the interest.

The Detroit Symphony, rated as one of the greatest organizations of its kind in this country, came to the radio audience as an NBC-WJZ broadcast a short time ago with Dr. DAMROSCH in charge.

OSSIP GABRILOWITSCH, distinguished leader of the Detroit orchestra, had invited Dr. DAMROSCH to his city to conduct in his place. The program brought in the Orpheus Club of Detroit as a choral group and GABRILOWITSCH as conductor of one number.

"The Firefly," by FRIML and the "Pomp and Circumstance" of ELGAR illustrate the range of the musical bill-of-fare.

As ERNEST LA PRADE, closely associated with Dr. DAMROSCH in the Spring concert program, has commented, there is plenty of good food for the musically inclined, and he might have added that the public appetite for good music has been stimulated to a degree unthought of a few years ago before the NBC musical counsel took up his baton in behalf of better music for bigger radio audiences.

His selections for the "Packard Presents Dr. WALTER DAMROSCH" broadcasts appeal not only to the studious type of music-lovers who have followed him in his career throughout half a century, but also to a vastly larger group which listens "intensely"—in his own phrase—to the best that the world offers in symphonic and other instrumental music.

This immense audience, larger even than the group of music-lovers and students of school-age, finds itself listening to such varied fare as WAGNER's "Das Rheingold" and the Allegretto from BRAHMS' Symphony No. 2, with JEROME KERN's "Old Man River" in between.

To the horror of the super-

esthete the classic as well as the modern may be heard not only in the drawing room but in any lunch wagon or ice-cream soda stand whose proprietor wants to tune in.

Always Vital

Speaking of those whose esthetic glands function a little too rapidly—and these people are always on the pessimistic side when it comes to a discussion of the future of American music—it may be said in parentheses that Dr. DAMROSCH, the optimist, faces his symphony orchestra every Monday night in his Radio City studio in just as about the same frame of mind he did a half-century ago when he began conducting.

He is as alive as then to the immense opportunities of bringing good music to the people. As in his radio discussions of music, for the NBC Music Appreciation Hour, which will be continued next Fall.

Dr. DAMROSCH this Summer takes the democratic approach to

aristocratic music of the classical sort and the appreciative approach to the newer meritorious American compositions.

At the age of 72 he is so far from being a conservative that he points out what radio does for the development of the good singer rather than spend time lecturing on what radio ought to do, fails to do, etc. A recent observation regarding radio musicians of all kinds, from the youngest beginner with popular melodies to the world-famed operatic star, is that the technical requirements are so strict that the performer must do his best at all times if he is to get across successfully to his vast audiences.

He Sees Ahead

Only good diction can succeed on the air, he points out. This leaves the pessimists somewhat in the rear of the procession. And he points out in addition that opera over the air gives encouragement to a much handicapped group, the creators and producers of American works. Hardly a program of Dr. DAMROSCH's but brings home the truth of one or the other of these acute observations.

To those who have been making themselves mournfully vocal by singing the swan-song of American music, Dr. DAMROSCH says cheerily, and means every word of it:

"I'd like to live to be a hundred so as to see what America is going to do to our music."

He could see ahead, when he became a director half a century ago. He can still see ahead.

Seibel and Sylvan Trio

GEORGE SEIBEL, literary and dramatic critic of the Pittsburgh Sun-Telegraph, will make his second guest appearance with the Sylvan Trio during the program broadcast over the NBC-WEAF network, Sunday, June 3, from 5.15 to 5.30 P. M.

She Assists



CAROL DEIS, soprano, frequently appears as soloist with DR. DAMROSCH in his Packard concerts.

Press Hits Chicago Fire Radio News

(Continued from Page 1)

news on its own initiative and under its own direction, it must learn to discipline itself."

Editor & Publisher, organ of the press, commented on the situation editorially.

"This is a sample of what independent radio schemers have in mind to inflict upon the people of this country. They are not prepared to do the news jobs, their medium is physically incapable of supplying more than headline material at best.

"Radio news, if the independents are not restrained, will become a public question, to be decided by the Administration at Washington. It is not conceivable that a medium which is physically incapable of functioning in the public interest will be allowed to interfere with the established system of news reporting in a democracy."

John A. Holman is Guest at Luncheon

At a luncheon in Hotel Bradford, Boston, on Monday, May 28, JOHN A. HOLMAN, new manager of station WBZ, Boston branch of the National Broadcasting Company, was introduced to the radio editors of Boston newspapers.

WALTER E. MYERS, manager of WBZ since 1932, promoted to national sales representative of the NBC in Boston, introduced Mr. HOLMAN. Arrangements for the luncheon were made by GEORGE A. HARDER, publicity representative for the NBC in Boston.

This and That

(Continued from Page 1)

ly not experienced—lead to great confusion. I wasn't quite sure at the end who had committed the crime or who had been killed.

"Taxi," the series of dramas starring that movie actor MAX BAER, is quite inferior material. It reminds you, in fact, of the less violent heart-throb draymas of the early screen days.

But it is done so engagingly, with BAER himself having such a good time acting it, that you listen despite your better judgment.

On the whole, there is more room for improvement in radio dramas than in any other form.

The solution does not lie necessarily in getting "big names" to act on the air.

It does lie in getting a high standard of material, with fewer and more carefully trained actors to present it.

STATION DIRECTORY
Page 4

Tuesday, June 5 - "Conflict", Stribling drama, WABC, 10.30 P.M.

Highlights

- P.M.**
- 8.30—Wayne King, NBC-WEAF "Accordiana," Vivienne Segal, CBS-WABC
 - 9.30—Ed Wynn, NBC-WEAF.
 - 10.00—Stoopnagle and Budd, CBS-WABC
 - "The Red Poppy," Frank Black directing, NBC-WJZ
 - 10.30—"Conflict," drama by T. S. Stribling, CBS-WABC

(All programs are listed in Eastern Daylight Saving Time. Eastern Standard Time is one hour earlier; Central Time is two hours earlier.)

- 7.30 A.M. EDT; 6.30 EST; 5.30 CT**
Top o' the Morning, WLW, 30 m.
Yoichi Hiraoka, xylophone, WJZ
Musical Clock, WBZ, 30 m.
McCormick Fiddlers, WLW, 30 m.
Organ Reveille, WABC
- 7.45 A.M. EDT; 6.45 EST; 5.45 CT**
Pollock and Lawnhurst, WEAF WGY
Morning Musicale, WEEI
- 8 A.M. EDT; 7 EST; 6 CT**
Radio City Organ, WEAF
E. B. Rideout, News, WEEI
Prayer, WLW
Morning Devotions, WJZ WBZ
Collin Driggs, organist, WTIC, 30 m.
Resume and Salon Musicale, WABC, 45 m.
- 8.15 A.M. EDT; 7.15 EST; 6.15 CT**
Devotions, WLW
Don Hall Trio, WJZ WBZ WHAM
- 8.30 A.M. EDT; 7.30 EST; 6.30 CT**
Cheerio, WEAF WEEI WTIC WGY WLW, 30 m.
Lew White at the Organ, WJZ WBZ WHAM, 30 m.
- 8.45 A.M. EDT; 7.45 EST; 6.45 CT**
Caroline Gray, pianist, WABC
- 9 A.M. EDT; 8 EST; 7 CT**
Sam Herman and Frank Banta, WEAF WGY WLW
Clothes Institute, WEEI
Breakfast Club, WJZ, 1 h. (WHAM, 15 m. from 9.15, WBZ from 9.30) KDKA
Round Towners' Quartet, WABC
- 9.15 A.M. EDT; 8.15 EST; 7.15 CT**
Landt Trio and White, WEAF WEEI WGY WLW
In the Luxembourg Gardens, WABC, 30 m.
- 9.30 A.M. EDT; 8.30 EST; 7.30 CT**
Mary Phillips, songs, WEAF WTIC WGY
Hymns of All Churches, WLW
N. Y. Breakfast Club Orchestra, WBZ
- 9.45 A.M. EDT; 8.45 EST; 7.45 CT**
News and the Wife Saver, WEAF WEEI WTIC WGY WLW
Mystery Chef, WABC
- 10 A.M. EDT; 9 EST; 8 CT**
Breen and deRose, WEAF WTIC WGY, 15 m.
Edward MacHugh, Gospel singer, WJZ WBZ
Bill and Ginger, WABC
- 10.15 A.M. EDT; 9.15 EST;**
Clara, Lu 'n' Em, WEAF WEEI WGY WLW
Castles in the Air, WJZ
Duke Dewey's Orchestra, WBZ
"Current Questions Before Congress," Arthur Capper of Kansas, WABC
Bob White, WTIC
- 10.30 A.M. EDT; 9.30 EST; 8.30 CT**
Treasure Chest, Howard Phillips, baritone, Don Allen's Orchestra, Martha Lee Cole, interior decorator, WEAF WEEI WGY WTIC WLW
Today's Children, WJZ WBZ WHAM WBAL KDKA
News and Frivolities, WABC
- 10.45 A.M. EDT; 9.45 EST; 8.45 CT**
News and Morning Parade, WEAF WTIC Rhythm Jesters, WLW
Musical Turns, WEEI
News and Radio Kitchen, WJZ News, WBZ
- 11 A.M. EDT; 10 EST; 9 CT**
Edison Friendly Kitchen Program, WEEI
Galaxy of Stars, WGY WTAM WLW
The Honey-mongers, WJZ KDKA
M. I. T. Graduation Exercises, Dean Willard L. Sperry of Harvard Divinity School, Howard W. Blakeslee, science editor, Associated Press, and President Karl T. Compton,
U. S. Navy Band, WABC
- 11.15 A.M. EDT; 10.15 EST; 9.15 CT**
Your Child, WEAF WEEI WTIC WGY WLW
Piano, WJZ WHAM
Piano, WBZ
Charm Secrets, WCAU
- 11.30 A.M. EDT; 10.30 EST; 9.30 CT**
Three Shades of Blue, WEAF WEEI WGY Pop Concert, WTIC
Spirituals, WLW
U. S. Marine Band, WJZ KDKA, 1 h.; WBZ WHAM WLW from 12.00
Melody Parade, WABC
- 11.45 A.M. EDT; 10.45 EST; 9.45 CT**
Al Bernard, minstrel, WEAF WEEI WTIC Skip, Step and Happiana, WGY

- Painted Dreams, WGN WLW
Ben Alley, music, WABC
- 12 N. EDT; 11 A.M. EST; 10 CT**
Gene Arnold's Commodores, WEAF WEEI WGY
Monitor Views the News, WBZ
"The Voice of Experience," WABC WCAU
Studio Program, WTIC
Michael Treen, tenor, WOR
Laurel Trio, WTIC
- 12.15 P.M. EDT; 11.15 A.M. EST; 10.15 CT**
Johnny Marvin, WEAF WEEI, WTIC from 12.20
Phil Boudini, accordionist, WTIC
Martha and Hal, WGY
Agriculture talk, WBZ
Connie Gates, songs, WABC WCAU
Girls' Club Service League, WOR
Songs, WMCA
- 12.30 P.M. EDT; 11.30 EST; 10.30 CT**
Merry Madcaps, WEAF WEEI WTIC WGY
Vic and Sade, WJZ WBZ WBAL WHAM KDKA
Bond of Friendship, WLW
Microphone Gossip, WABC
Stocks, WMCA
- 12.45 P.M. EDT; 11.45 EST; 10.45 CT**
Organ, WNBX
Markets, weather, WEAF
Caroline Cabor, Del Castillo, WEEI
Merry Macs, WJZ WBZ WBAL WHAM
Ernie Holt's Orchestra, KDKA
The Texans, WLW
- 1 P.M. EDT; 12 N. EST; 11 A.M. CT**
Markets, weather, WEAF
WTIC, 30 m.
Words and Music, WJZ
Weather and agricultural reports, WBZ
Vagabonds, WGY
Ohio Farm Bureau, WLW
Larry Tate's Orchestra, WABC WCAU
Dr. H. I. Stranghagen, WOR, 30 m.
String Trio, WMCA
- 1.15 P.M. EDT; 12.15 EST; 11.15 CT**
Maurice Lee's Ensemble, WEAF WEEI
Peeping Tom and George, WGY
The Honorable Archie, WJZ WBZ KDKA
River and weather reports, WLW
Joan Marrow, music, WABC
Ariel Ensemble, WOR
News, WMCA
- 1.30 P.M. EDT; 12.30 EST; 11.30 CT**
Emerson Gill's Orchestra, WEAF, 30 m.
WEEI Reading Circle, WEEI, 30 m.
"Principle of the Children of the American Revolution," WTIC
WGY farm program, WGY, 30 m.
National Farm and Home Hour, WJZ WBZ KDKA WHAM WLW, 1 h.
Jack Russell's Orchestra, WABC WCAU, 30 m.
Theatre Club of the Air, WOR
- 1.45 P.M. EDT; 12.45 EST; 11.45 CT**
Bradley Kincaid, songs, WGY
Studio Program, WTIC, 30 m.
Otis Holley, soprano, WOR
- 2 P.M. EDT; 1 EST; 12 N. CT**
Dion Kennedy, organist, WEAF, 30 m.; WEEI, 15 m.
Hadley Rasmuson, baritone, WGY 15 m.
Ann Leaf at the organ, WABC WCAU
The Theatre, WMCA
Dr. Arthur Frank Payne, WOR
- 2.15 P.M. EDT; 1.15 EST; 12.15 CT**
Pure Food Institute, WEEI WTIC, 30 m.
Household Chat, WGY
Helen Trent's Romance, WABC
Nell Vinick, beauty talk, WOR
Sports, WMCA
- 2.30 P.M. EDT; 1.30 EST; 12.30 CT**
Robert Crawford, baritone, WEAF WGY
Columbia University Commencement Luncheon; Dr. Nicholas Murray Butler, WJZ WBAL
Rhyme and Cadence, WBZ
Rochester School of the Air, Science, WHAM
Hotel Gibson Orchestra, WLW
Artist Recital, WABC, 30 m.
"The Homemaker," WOR, 30 m.
Play, WMCA, 30 m.
- 2.45 P.M. EDT; 1.45 EST; 12.45 CT**
Ma Perkins, WEAF WEEI WGY WLW
Singing Cowboy, WTIC



CONNIE GATES, pianist and vocalist, presents a number of programs each week over the CBS-WABC network. In them she sings while she plays her own accompaniment.

- 3 P.M. EDT; 2 EST; 1 CT**
Blue Room Echoes, WEAF WTIC WGY
Del Castillo, organist, WEEI, 30 m.
Albany on Parade, WGY
Ponce Sisters, WLW
Metropolitan Parade, WABC
Sally and Sue, WOR
Song Team, WMCA
- 3.15 P.M. EDT; 2.15 EST; 1.15 CT**
Song Portraits, Beulah Croft, WEAF WTIC
Voices of the Past, WGY
Rochester School of the Air, WHAM
Low Down, WLW
WGY
Newark Museum Program, WOR
Piano Duo, WMCA
- 3.30 P.M. EDT; 2.30 EST; 1.30 CT**
Woman's Radio Review, WEAF WEEI WGY, 30 m.
Music Magic, WJZ KDKA, 30 m.
Sputter and Whine, WLW
Gypsy Music Makers, WABC
Afternoon Musicale, WOR, 1 h.
Stocks, WMCA
- 3.45 P.M. EDT; 2.45 EST; 1.45 CT**
King Jack and Jester, WLW
Arno B. Camerer, "Your National Parks in 1934," WABC
Bridge talk, WMCA
- 4 P.M. EDT; 3 EST; 2 CT**
Your Lover, songs, WEAF WGY
Stocks, WEEI
Betty and Bob, drama, WJZ WBZ WHAM KDKA WLW
Seventh Regiment Band, WABC
Songs, organ, WMCA
- 4.15 P.M. EDT; 3.15 EST; 2.15 CT**
Don Bigelow's Orchestra, WEAF WGY
The Singing Stranger, WJZ WBZ WHAM KDKA
Matinee Highlights, WLW
- 4.30 P.M. EDT; 3.30 EST; 2.30 CT**
Art Tatum, pianist, WEAF WEEI WGY
Health Clinic, WBZ
Jerry Cooper, baritone, WABC
Two Piano Recital, WOR
Alice Joy, WJZ WHAM
Gypsy Trio, WMCA
- 4.45 P.M. EDT; 3.45 EST; 2.45 CT**
Lady Next Door, WEAF WEEI
Women's Clubs, WJZ WBZ WHAM

- Stocks, WGY
Four Showmen, WABC WCAU
The Easy Chair, WOR
Cartie's Club, WMCA
- 5 P.M. EDT; 4 EST; 4 CT**
Chick Webb's Orchestra, WEAF WEEI WTIC WLW, 30 m.
Three Schoolmaids, WGY
Palmer Clark's Orchestra, WJZ, 30 m.
Agriculture markets, WBZ
The Dictators, WABC WEAN
Variety, WOR
Vagabonds, WGY
Sally's Party, WMCA
- 5.15 P.M. EDT; 4.15 EST; 3.15 CT**
The Monitor Views the News, WBZ
Skippy, WABC WCAU
- 5.30 P.M. EDT; 4.30 EST; 3.30 CT**
The Tattered Man, WEAF WEEI WTIC
Wigwam Club, WGY
Singing Lady, WJZ WBZ WHAM WBAL WLW
Singing Lady, WJZ WBZ WHAM WBAL WCAU
Jack Armstrong, "All-American Boy," WABC WCAU
The Tattered Man, WEAF WEEI WTIC
"Once Upon a Time," WOR
Singing Lady, WJZ WBZ WHAM WLW
Basil Ruysdael, WOR
Violin, WMCA
- 5.45 P.M. EDT; 4.45 EST; 3.45 CT**
Nursery Rhymes, WEAF WEEI WTIC
Billy Rose, tenor, WGY
Orphan Annie, WJZ WBZ WHAM KDKA WLW
Gordon, Dave and Bunny, WABC WCAU
Tex Fletcher, songs, WOR
- 6 P.M. EDT; 5 EST; 4 CT**
Mme. Frances Alda, WEAF WLW, 30 m.
The Evening Tattler, WEEI, 30 m.
News, WGY
Dorothy Page, songs, WJZ WBZ WHAM KDKA
Buck Rogers, WABC WCAU
Wrightville Clarion, WTIC
- 6.15 P.M. EDT; 5.15 EST; 4.15 CT**
Piano, WGY
Angelo Ferdinando's Orchestra, WJZ WHAM
Bill Williams, WBZ
Bobby Benson and Sunny Jim, WABC WCAU
- 6.30 P.M. EDT; 5.30 EST; 4.30 CT**
Mid-Week Hymn Sing, WEAF WTIC WGY
Stamp Club, WJZ WHAM
Mischa Raginsky's Ensemble, WABC
Jack Armstrong, WLW
Harry Hershfield, WOR
- 6.45 P.M. EDT; 5.45 EST; 4.45 CT**
Mary Small, WEAF WGY WTIC
Edison Salute, WEEI
Lowell Thomas, WJZ WBZ WHAM KDKA WLW
Beale Street Boys, WABC WCAU
Phil Cook, WOR
- 7 P.M. EDT; 6 EST; 5 CT**
Goodrich Baseball Review, WEAF
Book Review, WEEI
Annette McCullough, songs, WGY
Amos 'n' Andy, WJZ WBZ WHAM WLW KDKA
Morton Downey, WABC WCAU
Ford Frick, sports, WOR
- 7.15 P.M. EDT; 6.15 EST; 5.15 CT**
Gene and Glenn, WEAF WEEI WGY
The Schools in Local Revival, George F. Zook, United States Commissioner of Education, C. R. Mann, director, American Council on Education, Government talk, WJZ WBZ WBAL WEAM, 30 m.
Pittsburgh Varieties, KDKA
Gene Purcell's Orchestra, WLW
Just Plain Bill, WABC WCAU
Sports, WTIC
- 7.30 P.M. EDT; 6.30 EST; 5.30 CT**
Browne and Llewellyn, WEAF WGY
Teddy Bergman, WEEI
Paul Keast and Hudson's Orchestra, WABC WCAU
Footlight Echoes, WOR, 30 m.
Bob Newhall, WLW
- 7.45 P.M. EDT; 6.45 EST; 5.45 CT**
The Goldbergs, WEAF WEEI WGY WTAM
Grace Hayes, songs, WJZ
Dunbar Quartet, WBZ
Sea Stories, KDKA
Boake Carter, WABC
Melody Masters, WLW
Tony Grande, WHEB
- 8 P.M. EDT; 7 EST; 6 CT**
Leo Reisman's Orchestra and Phil Duey, WEAF WEEI WTIC WGY, 30 m.
Mystery Drama, WJZ WBZ KDKA WLW, 30 m.
The Troopers, WABC
Dinner Concert, WHAS, 30 m.
"Radio Vanities," Frank Parker, tenor, WOR, 30 m.
- 8.15 P.M. EDT; 7.15 EST; 6.15 CT**
"The Voice of Experience," WABC WCAU
Vera C. Park, contralto, WPG
- 8.30 P.M. EDT; 7.30 EST; 6.30 CT**
Wayne King and Orchestra, WEAF WEEI WTIC WGY, 30 m.
Conrad Thibault and Lois Bennett, WJZ WBZ WHAM WBAL KDKA WLW, 30 m.
"Accordiana," with Abe Lyman's Orchestra, Vivienne Segal, WABC WCAU 30 m.
Borrah Minnevitich and his Harmonica Rascals, WOR, 30 m.
Serial, WPG
Dinner Concert, WHAS, 30 m.
- 9 P.M. EDT; 8 EST; 7 CT**
Ben Bernie and Orchestra, WEAF WEEI WTIC WGY WLW, 30 m.
Household Musical Memories, WJZ WBZ WHAM KDKA, 30 m.
Freddy Martin's Orchestra, Maury H. B. Paul, guest artist, WABC WCAU, 30 m.
Back Stage with Boris Morros, WOR
Paul Haas, tenor, WPG
Burnett's Orchestra, WGN, 30 m.
- 9.15 P.M. EDT; 8.15 EST; 7.15 CT**
Angela di Marco, soprano, WPG

- 9.30 P.M. EDT; 8.30 EST; 7.30 CT**
Ray Perkins, Gale Page, soprano, Betty Brown, comedienne, WEAF WEEI WGY WLW, 30 m.
Eddie Duchin's Orchestra, WJZ WBZ WHAM KDKA, 30 m.
Richard Humber's Orchestra, WABC WCAU, 30 m.
Harry H. Balkin on "Success," WOR, 30 m.
Lawrence Salemo's Orchestra, WGN, 30 m.
Traymore Concert Orchestra, WPG
- 9.45 P.M. EDT; 8.45 EST; 7.45 CT**
"Mountain Monuments," WOR
- 10 P.M. EDT; 9 P.M. EST; 8 CT**
Gladys Swarthout, John Barclay, Frank McIntyre, WEAF WEEI WGY WLW, 1 h.
American Premiere Russian Ballet, "Red Ambassador Troyanovsky will speak, WJZ WBZ WHAM KDKA, 1 h.
Stoopnagle and Budd, Connie Boswell, Casa Loma Orchestra, WABC WCAU, 30 m.
Eddy Brown, violinist, orchestra, WOR
- 10.30 P.M. EDT; 9.30 EST; 8.30 CT**
Broadcast from Geneva, S. Mack Eastman, "The Coming Labor Conference," WJZ WBZ
"Conflict," WABC, 30 m.; WCAU, 15 m.
Red and Black Revue, WOR, 30 m.
Concert, WTIC
Romance of Dan and Sylvia, KDKA
- 10.45 P.M. EDT; 9.45 EST; 8.45 CT**
Harlem Serenade, WABC, 30 m.
Nancy Martin, KDKA
- 11 P.M. EDT; 10 EST; 9 CT**
Emil Coleman's Orchestra, WEAF WTIC
Weather, baseball scores and current events, WEEI
Johnny Johnson's Orchestra, WGY, 30 m.
Jack Berger's Orchestra, WJZ KDKA
Three Blue Notes, WBZ
Moonbeams, WOR, 30 m.
Cotton Queen Minstrels, WLW, 30 m.
- 11.15 P.M. EDT; 10.15 EST; 9.15 CT**
News, WEEI
The Poet Prince, WJZ WBZ WHAM KDKA
News and Barnet's Orchestra, WABC
- 11.30 P.M. EDT; 10.30 EST; 9.30 CT**
National Radio Forum, WEAF WEEI WGY, 30 m.
News and Brito's Orchestra, WJZ WBZ
Sammy Kaye's Orchestra
Reggie Child's Orchestra, WABC
Orchestras, WGN, 3 h.
Arthur Warren's Orchestra, WOR, 30 m.
- 11.45 P.M. EDT; 10.45 EST; 9.45 CT**
Ben Pollack's Orchestra, WABC
- 12 M. EDT; 11 P.M. EST; 10 CT**
News and Charlie Davis' Orchestra, WEAF WGY WLW
Musical Turns, WEEI
Julie Stein's Orchestra, WJZ WBZ, 30 m.
Cocktail Continentals, WLW, 30 m.
Ozzie Nelson's Orchestra, WABC, 1 h.
Anthony Trini's Orchestra, WOR
- 12.30 A.M. EDT; 11.30 EST;**
Jack Denny's Orchestra, WEAF WEEI WGY
Pete Smythe's Orchestra, WJZ WBZ WHAM
Mel Snyder's Orchestra, WLW, 30 m.

Crandall Directs Concert of Birds

LEE S. CRANDALL, curator of birds at the New York Zoological Park, will direct a concert of wild birds over the WABC network Saturday, June 9, from 11.45 A.M. to 12 Noon.

The broadcast will originate in the bird house of the Bronx Zoo.

Among the birds to be heard are the penguin, the bugle-calling troupial, the myna, the birds of paradise and the bell birds, whose song is compared to the sound a blacksmith makes when beating his anvil.

CRANDALL has been curator of the zoological park since 1920.

King of Sweden Speaks
King GUSTAV of Sweden will be heard in the United States over the NBC-WJZ network on Wednesday, June 6, at 11.15 P.M. The broadcast will be in connection with the ceremonies of the Swedish flag day.

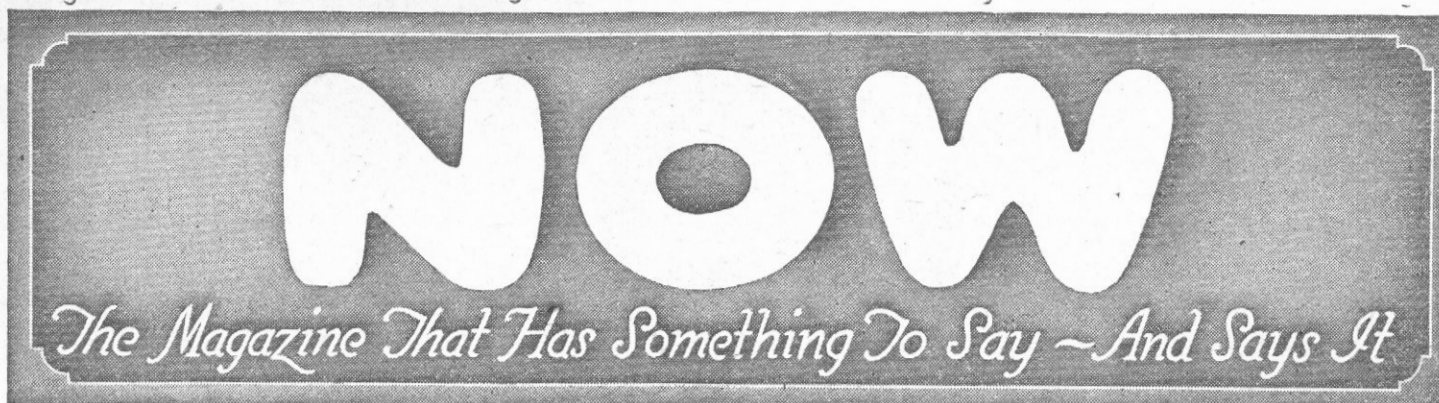
Ray For Summer



LEAH RAY, singer with PHIL HARRIS' Orchestra, set the first style note for the coming Summer when she appeared in the NBC studios clad in brown slacks and a sweater. She also has a coat of tan, acquired in Norfolk, Virginia.



CARVER-NEW ENGLAND PRESS
Printing - Designing - Binding - Mailing
610 Atlantic Avenue, Boston
Telephone LIBerty 9673



*Offers In Its June Issue, Now On Sale
At All The News Stands:*

Hitler Explained

-----The Lowdown On The Lowbrow

By Gerald Chittenden

Q.—Does Mr. Chittenden claim that Herr Hitler is a Lowbrow? A.—One way to find out is to read June NOW.

Q.—Anything else in June NOW that might attract attention? A.—Several articles are quite controversial in nature. For stark, staring color in writing, read the "Black Dance Of Hunger" by Wallace Patch. Mr. Patch is new to NOW.

Q.—Has Henry Harmony any caricatures in June NOW? A.—Certainly. His front cover, "Mugwump", is little short of a satirical masterpiece. And in his double page spread he visits Dr. F. D. R.

Q.—Dr. F. D. R.? A.—The same, posing as a dentist for the purpose of Mr. Harmony's humorous drawing.

Q.—Fifteen cents the copy? A.—Right; at all the news stands. It costs less by the year. Subscription blank at the left.

**Circulation Manager,
NOW,
No. 34 Court Square,
Boston, Massachusetts.**

**I'd like the next twelve issues of NOW.
I am inclosing \$1.50 (Cash, check or
money order.)**

Name _____

Street _____

City or Town _____

State _____

The MICROPHONE, Inc.

Wednesday, June 6 - Epsom Derby on WABC-WEAF, 9.45 A.M.

Highlights

A.M.

9.45—Epsom Derby from England, CBS-WABC

P.M.

- 8.30—Everett Marshall, CBS-WABC
- 9.00—Nino Martini, CBS-WABC
- Cuckoos, NBC-WJZ
- 9.30—Burns and Allen, CBS-WABC
- 10.30—Albert Spalding, violinist, CBS-WABC
- 11.00—"The Drunkard," CBS-WABC

(All programs are listed in Eastern Daylight Saving Time. Eastern Standard Time is one hour earlier; Central Time is two hours earlier.)

6.45 A.M. EDT; 5.45 EST; 4.45 CT
Health Exercises, WEAF WEEI WGY, 1 h. 15 m.

7 A.M. EDT; 6 EST; 5 CT

Musical Clock, WBZ
Musical Clock, WTIC
Exercise Class, WMCA, 30 m.

7.30 A.M. EDT; 6.30 EST; 5.30 CT

Yoichi Hiraoka, xylophonist, WJZ WBAL
Musical Clock, WBZ, 30 m.
McCormick's Fiddlers, WLW
Organ Reveille, WABC, 30 m.

7.45 A.M. EDT; 6.45 EST; 5.45 CT

Pollock and Lownhurst, WEAF WGY
Alarm Clock, WEEI
Jolly Bill and Jane, WJZ WBAL

8 A.M. EDT; 7 EST; 6 CT

Organ Rhapsody, WEAF WTIC, 30 m.
Musical Clubs, WGY
Morning Devotions, WJZ WBZ
E. B. Rideout, WEEI
Resume and Salon Musicale, WABC, 30 m.

8.15 A.M. EDT; 7.15 EST; 6.15 CT

Don Tall Trio, WJZ WBZ WHAM WBAL

8.30 A.M. EDT; 7.30 EST; 6.30 CT

Cheeriq, WEAF WEEI WGY WLW, 30 m.
Lew White, organist WJZ WBZ WHAM WBAL, 30 m.
Sunny Melodies, WABC, 30 m.
Scissors and Paste, WGY

9 A.M. EDT; 8 EST; 7 CT

Herman and Banta, WEAF WEEI
Scissors and Paste, WGY
Mystery Chef, WJZ WBZ WBAL KDKA WLW
Eton Boys, quartet, WABC

9.15 A.M. EDT; 8.15 EST; 7.15 CT

Landr Trio and White, WEAF WEEI WGY WLW
Breakfast Club Dance, WJZ WBZ WBAL, 45 m.; WHAM, 30 m.
Madison Ensemble, WABC

9.30 A.M. EDT; 8.30 EST; 7.30 CT

Bradley Kincaid, WEAF WTIC WGY
Hymns, WLW
"The Song Bag," WEEI
Metropolitan Parade, WABC, 45 m.

9.45 A.M. EDT; 8.45 EST; 7.45 CT

Epsom Derby, from England, WEAF WEEI WTIC WLW WABC, 30 m.
Mid-Morning Devotions, WGY
Adrian O'Brien, WBZ

10 A.M. EDT; 9 EST; 8 CT

Breen and De Rose, WEAF WEEI WTIC WGY
Harvest of Song, WJZ WBZ WHAM KDKA
Mrs. Littleford, WLW

10.15 A.M. EDT; 9.15 EST; 8.15 CT

Clara, Lu 'n' Em, WEAF WEEI WGY WLW
Young Artists Trio, WJZ WHAM
Duke Dewey's Orchestra, WBZ
Bill and Ginger, WABC
Bob White, WTIC

10.30 A.M. EDT; 9.30 EST; 8.30 CT

News and Three Scamps, WEAF
The Market Basket, WGY
Musical Twins, WEEI
Today's Children, WJZ WBZ WBAL, 30 m.
News and Gypsy Music Makers, WABC
Jack Berch, WLW
Music, WTIC, 30 m.

10.45 A.M. EDT; 9.45 EST; 8.45 CT

Betty Crocker, WEAF WEEI WGY WLW
Jack and Loretta Clemens, WJZ WBAL

11 A.M. EDT; 10 EST; 9 CT

Juan Reyes, pianist, WEAF
Edison Friendly Kitchen, WEEI
Skip, Step and Happiana, WGY
The Wife Saver, WJZ
The Honeyymooners, WBZ
News, WLW
Cooking Close-ups, WABC

11.15 A.M. EDT; 10.15 EST; 9.15 CT

Sweetheart Melodies, DeMarco Sisters and Jack Arthur, baritone, WEAF WEEI WGY WLW
Swedish Flag Day, King Gustav speaking from Stockholm, WJZ WHAM WBAL, 45 m.
Women's Club News, WBZ
Pedro Cordoba, Will Osborne's Orchestra, WABC
Song Bag, WTIC, 30 m.

11.30 A.M. EDT; 10.30 EST; 9.30 CT

Betty Moore, WEAF WEEI WGY WLW
Tony Wons, WABC

11.45 A.M. EDT; 10.45 EST; 9.45 CT

Fields and Hall, WEAF WEEI WTIC WGY
Painted Dreams, WLW
Magic Recipes, WABC

12 N. EDT; 11 A.M. EST; 10 CT

Gene Arnold and Commodores, WEAF WEEI
Eva Taylor, crooner, WJZ
Blue Room Echoes, WTIC
The Monitor Views the News, WBZ
Prairie Symphony, WLW, 30 m.
"The Voice of Experience," WABC, WCAU
Travel Talk, WOR
Songs, WMCA

12.15 P.M. EDT; 11.15 A.M. EST; 10.15 CT

Johnny Marvin, tenor, WEAF WEEI WTIC
Martha and Hal, WGY
Wendell Hall, songs, ukulele, WJZ WBAL
Time, weather, temperature, WBZ
Betsy Barthell, melodists quartet, WABC
Variety, WOR
Songs, WMCA

12.30 P.M. EDT; 11.30 EST; 10.30 CT

Alma Milstead, soprano, WEAF WGY, 15 m.; WTAM, 30 m.
New England Kitchen, WEEI, 30 m.
Vic and Sade, WJZ WBZ, 30 m.; KDKA WHAM from 1.30
Bond of Friendship, WLW
Smiling Ed McConnell, WABC WCAU
Alexander Haas' Ensemble, WOR, 30 m.
Dance Music, WTIC, 45 m.

12.45 P.M. EDT; 11.45 EST; 10.45 CT

Market and Weather Reports, WEAF
Radio Gang, WGY
Merry Macs, WJZ WHAM
Huntley's Orchestra, KDKA
The Texans, WLW
Mischa Raginsky's Ensemble WABC WCAU

1 P.M. EDT; 12 N. EST; 11 A.M. CT

Markets, weather, WEAF
Vagabonds, WGY
Words and music, WJZ
Weather, agriculture, WBZ, 30 m.
Dance Marathon, KDKA
Dr. H. I. Strandhagen, WOR
Ohio Farm Bureau, WLW
String Trio, WMCA

1.15 P.M. EDT; 12.15 EST; 11.15 CT

Advertising Club Luncheon, WEEI
Don Pedro's Orchestra, WEAF
The Honorable Archie, WJZ
Crane Calder, bass, WABC
Ariel Ensemble, WOR
Mirror Reflections, WMCA
Albany on Parade, WGY
Tom and George, WGY
Weather, WLW

1.30 P.M. EDT; 12.30 EST; 11.30 CT

Maurice Lee's Orchestra, 30 m.
Farm Program, WGY, 30 m.
National Farm and Home Hour, WJZ WBZ WHAM, 1 h.
Harold Knight's Orchestra, WABC, 30 m.
Beauty Guild, WMCA, 30 m.
Rosalind Jewet, books, WOR

1.45 P.M. EDT; 12.45 EST; 11.45 CT

The Play Boys, WABC
String Trio, WOR

2 P.M. EDT; 1 EST; 12 N. CT

Two Seats in the Balcony, WEAF WEEI WGY, 45 m.
Concert Miniatures, WABC, WCAU, 15 m.
Dr. Arthur Frank Payne, WOR
Dog Talk, WMCA

2.15 P.M. EDT; 1.15 EST; 12.15 CT

Romance of Helen Trent, WABC WCAU
Virginians, male quartet, WOR
Sports, WMCA

2.30 P.M. EDT; 1.30 EST; 12.30 CT

Smackout, WJZ
Hotel Gibson Orchestra, WLW
School of the Air, Science, WHAM, 30 m.
Ann Leaf, organ, WABC
"The Homemaker," WOR, 30 m.
Orchestra, WMCA, 30 m.

2.45 P.M. EDT; 1.45 EST; 12.45 CT

Ma Perkins, WEAF WEEI WGY WCHS - WLW
Clifford Wood, WTAG
Colette Carlay, WJZ WBZ
Memorial Day Services from Arlington, WABC KDKA WHAM
Singing Cowboys, WTIC

3 P.M. EDT; 2 EST; 1 CT

Marion McAfee, songs, WEAF WEEI WTIC WLW
Albany on Parade, WGY
Joe White, tenor, WJZ
Memorial Day Program from Arlington KDKA WHAM

"Minstrel Man"



IRVING KAUFMAN, CBS entertainer, known as "Lazy Dan, the Minstrel Man" on Sundays at 2.30 P.M. He is featured with EVERETT MARSHALL on Wednesdays at 8.30 P.M.

Musicale, WBZ
Camay Minstrels, WLW
The Wiseman, WEAF
Show Boat Boys, WOR
Musical raconteur, WMCA

3.15 P.M. EDT; 2.15 EST; 1.15 CT

"Wise Man," WEAF WEEI WTIC WGY
Happy Days in Dixie, WJZ, 30.; WHAM WBAL - KDKA from 3.30
Pianologue, WMCA
Roxy, "Your Lover," WOR
Low Down, WLW

3.30 P.M. EDT; 2.30 EST; 1.30 CT

Woman's Radio Revue, WEAF WEEI WGY, 30 m.
Home Forum Cooking School, WBZ, 30 m.
Modernistic Melodies, WABC
Sputter and Whine, WLW
Afternoon Musicale, WOR, 1 h.
Woman's Radio Review, WTIC, 30 m.

3.45 P.M. EDT; 2.45 EST; 1.45 CT

Jackie Heller, tenor, WJZ WBZ WHAM
Spiritual Singers, WLW
Columbia Salon Orchestra, WABC
Songs, WMCA

4 P.M. EDT; 3 EST; 2 CT

Pop Concert, WEAF WEEI WTIC WGY, 30 m.
Betty and Bob, WJZ WBZ WHAM KDKA WLW
Manhattan Moods, WABC
Variety, WMCA, 30 m.

4.15 P.M. EDT; 3.15 EST; 2.15 CT

Alice Joy, dream girl, WJZ WBZ WBAL WHAM
Matinee Highlights, WLW
Manhattan Moods, WABC

4.30 P.M. EDT; 3.30 EST; 2.30 CT

Art Tatem, pianist, WEAF WEEI WTIC Variety, WGY
H. H. Bennett, Director of the Soil Erosion Service, U. S. Dept. of the Interior, WABC
Markets, KDKA
Marimba Orchestra, WOR
Trio, WMCA

4.45 P.M. EDT; 3.45 EST; 2.45 CT

The Lady Next Door, WEAF WEEI WTIC Stocks, WGY
Songs and Music, WJZ WBZ KDKA
Organ Melodies, WTIC, 30 m.
Emergy Deutsch's Orchestra, WABC, 30 m.
Beauty Talk, WOR
Advice, WMCA

5 P.M. EDT; 4 EST; 3 CT

"Education in the News," Dr. William D. Boutwell, WEAF WEEI WLW
Lang Sisters, WGY
Palmer Clark's Orchestra, WJZ WHAM
N. E. Agriculture, WBZ
Eddie Copeland's Orchestra, WABC
Dogs, WOR
Sally's Party, WMCA, 30 m.

5.15 P.M. EDT; 4.15 EST; 3.15 CT

Ted Black's Orchestra, WEAF WTIC WGY WLW

Sybil Jane Morse, pianist, WEEI
The Monitor Views the News, WBZ
Skippy, WABC WCAU
Amateur Astronomers' Asso., talk, WOR

5.30 P.M. EDT; 4.30 EST; 3.30 CT

Frank Merriwell's Adventures, WEAF WEEI WTIC WGY
Singing Lady, WJZ WBZ WHAM KDKA WLW
Jack Armstrong, WABC
Town Talk, Robert Reid, WOR

5.45 P.M. EDT; 4.45 EST; 3.45 CT

Armchair Quartet, WEAF
Bradley Kincaid, WGY
Little Orphan Annie, WJZ WBZ WHAM KDKA
Gordon, Dave, Bunny, WABC

6 P.M. EDT; 5 EST; 4 CT

Xavier Cugat's Orchestra, WEAF WLW, 30 m. (WJAR from 6.15)
Evening Tattler, WEEI, 30 m.
Wrightville Clarion, WTIC, 30 m.
Variety, WGY
Don Bigelow's Orchestra, WJZ, 30 m.
Over the Heather, WBZ
Buck Rogers, WABC WCAU
Uncle Don, WOR, 30 m.
Ted Black's Orchestra, WMCA, 30 m.

6.15 P.M. EDT; 5.15 EST; 4.15 CT

Joe and Eddy, WGY
Salty Sam, WJZ
Bill Williams, WBZ
Bobby Benson and Sunny Jim, WABC WCAU

6.30 P.M. EDT; 5.30 EST; 4.30 CT

Yascha Davidoff, basso, WEAF
Current Events and baseball scores, WEEI
Musical Appetizers, WTIC
Ma Frasier's Boarding House, WGY
Three X Sisters, WJZ WBZ WHAM
Time, weather, WBZ
Jack Armstrong, WLW
Charlie Davis' Orchestra, WABC WCAU
Harold Stern's Orchestra, WOR, 30 m.
Screen revue, WMCA, 30 m.

6.45 P.M. EDT; 5.45 EST; 4.45 CT

Martha Mears, contralto, WEAF WTIC WGY
Studio Chorus, WEEI
Lowell Thomas, news, WJZ WBZ WHAM WLW KDKA
Beale Street Boys, WABC WCAU
Five Star Final, WMCA

7 P.M. EDT; 6 EST; 5 CT

Baseball Resume, WEAF
Comedy Stars of Hollywood, WEEI
Thru the Hollywood Looking Glass, WGY WHAM
Amos 'n' Andy, WJZ WBZ WHAM WLW KDKA
Vera Van, WABC WCAU
Ford Frick, sports, WORC
Melody Boys, WMCA
Five O'Clock Melodies, WHAS, 30 m.

7.15 P.M. EDT; 6.15 EST; 5.15 CT

Gene and Glenn, WEAF, WGY
Dick Tracy, detective, WEEI
Sports, WTIC
Literary Digest Poll, Graham McNamee, WJZ WBZ
Emerson's Orchestra, WLW
Just Plain Bill, WABC WCAU
Dance Tunes, WOR
Melody Ambassadors, WMCA
Radio School, WNBX

7.30 P.M. EDT; 6.30 EST; 5.30 CT

Lillian Bucknam, WEAF WTIC WGY
After Dinner Review, WEEI
Irene Rich, WJZ WBZ WHAM KDKA
Bob Newhall, WLW
Music on the Air, WABC WCAU
Cowboy Songs, WOR
Melody Masters, WLW

7.45 P.M. EDT; 6.45 EST; 5.45 CT

The Goldbergs, WEAF WEEI WGY
Dance Orchestra, WTIC
"Taxi," Max Baer, WJZ WBZ KDKA WHAM
Melody Masters, WLW
Boake Carter, news, WABC WCAU
True Stories of the Sea, WOR
Fallon's Orchestra, WMCA

8 P.M. EDT; 7 EST; 6 CT

The Baron, WEAF WEEI WTIC WGY, 30 m.
Crime Clues, Spencer Dean, WJZ WBZ WLW KDKA, 30 m.
Gypsy Violins, WABC
Attilio Baggio, WGN
Three Funsters, WMCA
Dinner Concert, WHAS, 30 m.
"The Champions," WOR, 30 m.

8.15 P.M. EDT; 7.15 EST; 6.15 CT

Easy Aces, WABC, WCAU
Rochester School of the Air-Physics, WHAM
Harry Rensfield, humorist, WOR
Gravell's Orchestra, WMCA

Wayne King's Orchestra, WEAF WTIC WGY
Unemployed Musicians Concert, direction of Will Dodge, WEEI, 30 m.
Maple City Four, WJZ WBZ WHAM KDKA
Unbroken Melodies, WLW
Everett Marshall's Broadway Vanities, WABC WCAU, 30 m.
"The Lone Ranger," WOR
Ramblers, WMCA

8.45 P.M. EDT; 7.45 EST; 6.45 CT

Babe Ruth, baseball comment, WJZ WBZ
KDKA WHAM
Radio Court, WLW
Maple Leaf Sextette, WPG
"More Than News," WMCA

9 P.M. EDT; 8 EST; 7 CT

Hour of Smiles, Fred Allen, Theodore Webb, Marshall Bartholomew, singers; Lennie Hayton's Orchestra, WEAF WEEI WTIC WGY WLW, 1 h.
Raymond Knight and His Cuckoos, WJZ WBZ WHAM WBAL KDKA, 30 m.
Nino Martini, tenor, Andre Kostelanetz, WABC WCAU, 30 m.
Orchestra, WOR, 30 m.
Baritone, tenor, WMCA, 30 m.

9.15 P.M. EDT; 8.15 EST; 7.15 CT

Concert, WHAS, 30 m.

9.30 P.M. EDT; 8.30 EST; 7.30 CT

Love Story, Paul Lukas, WJZ WBZ WHAM KDKA, 30 m.
WGY WLW, 30 m.
Guy Lombardo's Orchestra with Burns and Allen, WABC WCAU, 30 m.
Aldrich's Hawaiians, WPG, 30 m.
Harry H. Balkin, WOR
Naumberg Concert, WMCA, 1 h.

9.45 P.M. EDT; 8.45 EST; 7.45 CT

News, WEEA
"That's Life," News drama, WOR, 30 m.

10 P.M. EDT; 9 P.M. EST; 8 CT

Corn Cob Pipe Club, WEAF WEEI WTIC WGY WLW, 30 m.
Musical Cruiser, WJZ WBZ WHAM KDKA, 30 m.
Broadcast to and from Byrd Expedition, WABC WCAU
Margaret Powell Evans, WPG

10.30 P.M. EDT; 9.30 EST; 8.30 CT

"The Other Americans," Edward Tomlinson, WEAF WGY
Travellers Hour, WTIC
Ranny Weeks' Orchestra, WEEI
Jack Denny's Orchestra, Harry Richman and John B. Kennedy, WJZ WHAM, 30 m.
Sammy Lerner's Orchestra, WBZ
Henry Heiss' Orchestra, WLW
Romance of Dan and Sylvia, KDKA
Albert Spalding, violinist, Conrad Thibault, Joan Field, WABC WCAU, 30 m.
Willard Robinson's Orchestra, WOR, 30 m.
The Andersons, WPG
Richardson's Orchestra, WMCA

10.45 P.M. EDT; 9.45 EST; 8.45 CT

Ivan Petrov's Russians, WLW
Nancy Martin, KDKA
Pollack's Orchestra, WMCA

11 P.M. EDT; 10 EST; 9 CT

Angelo Ferdinando's Orchestra, WEAF WGY WTIC
E. B. Rideout, news and baseball scores, WEEI
Pickens-Sisters, WJZ WBAL
Weather, sports, WBZ
"The Drunkard," temperance play of 1840, WABC
"Moonbeams," WOR, 30 m.
Sports, KDKA
Tom Devodier's Orchestra, WMCA

11.15 P.M. EDT; 10.15 EST; 9.15 CT

Eric Madriguera's Orchestra, WEAF WTIC WTIC WGY, 30 m.
Will Osborne's Orchestra, WABC
News, William Scott's Orchestra, WEEI
John Fogarty, WJZ WHAM
News and Reggie Child's Orchestra, WABC
Joe Rines' Orchestra, WBZ
WCAU
WHAS Concert Orchestra, WHAS
Orchestras, WMCA, 3 hrs. 45 m.

11.30 P.M. EDT; 10.30 EST; 9.30 CT

Reggie Child's Orchestra, WEAF WEEI
Guy Lombardo's Orchestra, WJZ
Cormier Sisters, WBZ
Raymond Knight's Cuckoos, WLW
Orchestras, WGN, 3 h.

11.45 P.M. EDT; 10.45 EST; 9.45 CT

News and Ben Pollack's Orchestra, WJZ WBZ WHAM KDKA
Cargoos, drama, WLW, 30 m.
Frank Dailey's Orchestra, WABC WCAU

Guy Lombardo Heard on NBC Chains Twice Weekly

GUY LOMBARDO and his famous dance orchestra will be heard this Summer three times a week from the Waldorf-Astoria in New York City. Beginning June 7 they will be heard at 11 P. M. on Saturdays over the NBC-WEAF chain and on Mondays at 11.30 P. M. over the same chain and on Thursdays at 11.30 over the WJZ chain.

With his brothers CARMEN, LIEBERT and VICTOR, GUY LOMBARDO organized his orchestra at the age of 12. The four brothers still occupy key positions in the band.

LOMBARDO has been playing on the Pacific coast for the past season and now moves to the Starlight Roof of the Waldorf, where he will play for New York's smartest set.

Um-m-m Yum-m-m !!

After the Theatre

Barbecued Chicken

Golden Rod Beer

In a quiet nook at

SLADES BARBECUE

958 TREMONT STREET, BOSTON

Open All Night

Tune in on WHDH Tuesday and Thursday at 5.20 P. M.

Introducing

IF YOU know WEEL's "Old Painter" you know Eddie Gisburne who supplies the fodder for this week's grist via the thumbnail sketch route. Forty years ago (and he looks a lot younger), Eddie first saw the light of day in Providence, R. I. and for that many years has been knocking old man "adversity" all over the ring.



ED GISBURNE

The grim reaper called his paternal parent when Eddie was a babe in the arms of his mother, who also passed away when he had seen but nine summers. He was educated in the schools of Quincy, Mass., caught some baseball games for "alma high school" and was developing a fine yen for basketball until he subbed for a player on the then famous St. Mary's of W. Quincy against Co. G cadets of Gloucester. No more basketreering.

The wanderlust gripping him at 17 years, he hied to Gotham and thence to Liverpool as a deckhand on the *Adriatic*. He avers sleeping in the parks in Liverpool was not so good until he got a short-lived job tending charcoal fires for a coppersmith.

After four days the journeymen struck and the shop closed forcing him to hide on the New York bound *Devonian*. The cook uncovered him and supplied him with first cabin rations for carrying potatoes from the after storeroom of the good old cattle boat which he nonchalantly left hours after the customs boys had made their rounds.

Evidently enjoying the sea breezes via the galley, he signed for a hitch in Uncle Sam's navy and at the age of 21 was awarded the Congressional Medal of Honor for gallantry at Vera Cruz where he lost a leg. This didn't stop Eddie from helping the navy take 'em over, etc. during the big muss, all the while he was developing his knowledge of radio which he put to use with and for a New York firm of radio engineers for a period of four years after the World War.

He came to WEEL in 1927 as an announcer and has since graduated to production. He is a resident of East Milton and you can bet Mrs. Gisburne, John and Junior are regular listeners to his twice weekly rural character skit. Incidentally one of the boys is alleged to have a bright future on the cinder track having already turned in a 57 second quarter mile at Milton High. And, believe it or not, Eddie, Sr. flirts with the low 80's on any man's golf course.

So there you are.

WEEL'S Caroline Cabot Among Radio Pioneers

Two Daily Features Have Tremendous Following

WEEL lays claim to New England's long-distance woman radio talker in the person of Caroline Cabot, well-known microphone shopping reporter and director of the Shopping Service at the Edison Station.

Better known to her family and host of friends and admirers as Genevieve Sherlock, of the Belmont Sherlocks, Caroline Cabot has to date piled up 780 microphone hours. Based on an eight hour day, she has gabbed exactly ninety-nine days in the eight years behind the mike, or to be more statistical, for thirty-three days continuously, figuring twenty-four hours to the day. This is something of a record, according to WEEL sound sanctum bosses, and they challenge even your wife to out-talk their champion.

Continuing along a statistical vein, our analysis proves that these 780 mike hours consumed 6,240,000 words poured into the microphone in eight years. Every word had also to be dictated to her secretary, which means 12,480,000 words, or 1,560,000 per year, averaging 6,000 words per day.

Dorothy Franklin, secretary to Caroline Cabot, whose voice is heard occasionally in Caroline's absence, writes on an average of 3,000 words daily in preparation for this service, and over the period of eight years has written



CAROLINE CABOT

more than six million words on her ink piano for broadcasting alone, not counting fan and business mail answered.

Following is a brief history of Caroline Cabot's activity over the past eight years at WEEL, giving the highlights of this busy service.

Two days before Thanksgiving, in 1926, Genevieve Sherlock was selling store fixtures; one day later, she had taken a new name and a new position as Caroline Cabot at WEEL. She started with fifteen minutes daily to talk about merchandise in the various city shops and stores.

Jordan Marsh Company was her first client and has been continuously on her Service three times each week since that day eight years ago. On January 1,

1927, the Service has grown so popular that thirty minutes were necessary to tell the story of Boston stores. On February 8, 1927, because of the development of this service, Dorothy Franklin was taken from the stenographic department of the Edison Company as Caroline's assistant, a position she still holds.

In 1928, a year later, Will Dodge was engaged to furnish thirty minutes of music to sustain the half hour talk program, and this schedule was maintained for a little less than two years. In addition to this, a Children's Program was inaugurated on Saturday evening and continued about a year. Then time was taken earlier in the morning, at nine o'clock, and the music dropped.

Credit for keeping this service filled up and financially a success as a money-getter for the Edison Station belongs to Dorothy Drake, formerly Dorothy Dean of WNAC, and Nan Howard, who are busy selling the Caroline Cabot Service.

Last September still earlier time was selected—8.15 to 8.30. This was found to be the best ever, for the Service grew by leaps and bounds and is still filled up daily.

"A Bit Of This And A Bit Of That" program was originated about this time, assisted by Del Castillo at the organ, daily except Saturday and Sunday, from 12.45 to 1.15 P. M., and includes well-known guest artists. Each Thursday afternoon is called Matinee Day.

THE FINALS ON TODAY'S BALL GAMES

11:05 P. M. Each Weekday
11:01 A. M. Every Sunday

Courtesy

REAGAN-KIPP CO.
162 TREMONT ST.

Government Authorized Dealers In The Buying Of Old Gold And Silver.

over

STATION
WEEL

The Friendly Station

NEWS WEEL BRIEFS

"Shoot The Works" is the title of Ben Bernie's new motion picture, the filming of which is now practically completed . . . Roger Wheeler, WEEL current events scrivener, affiliated with Emerson College staff, teaching radio writing . . . One may well imagine what the upkeep of Carleton Dickerman's extensive garden does to the water bill . . . Ray Girardin is warming up the old trumpet he put down in favor of announcing several years ago, having discovered in a single year two can't live as cheaply as one and hopes to crash a few side jobs with the "Teddy Bears" orchestra . . . They'll deny it but Arthur Edes and Fran McLaughlin in the WEEL program office have a set of signals more complicated but much less obvious than come out of a football huddle . . . When better roses are possible to grow, the Miller Rose Company will have them—the bouquets furnished for the WEEL reception room are the last word; always . . . Cool air-conditioned studio floor at WEEL great aid to good humor with the advent of hot weather . . . Still unsolved—where pe-



tite Ruth Chilton gets the power for her rich, deep-throated contraltoing . . . Nominated among better inspirational bits—the WEEL Silver Lining Hour with Anna MacDonald, soprano, Wilbur Burleigh, organist and Oliver C. Elliot, head man at the Boston Industrial Home . . . Weekly puzzle suggested by Helen DeVoe, Publicity Department; three seconds to identify prominent network artists caricatured herewith . . . Frank Sherry

Run 'em off, Gus—



a studio visitor last week . . . Scott's Unique Program, Fridays a 9.30, has all the class that makes Scott's unique . . . One of the strangest wagers on record to the effect that a certain staff member could tell the three teams an announcer had in the baseball pool by listening to his broadcast of the scores . . . Sure thing guy who overheard it wanted to bet how the market was riding after listening to Paine, Webber & Co. stock exchange quotations . . . Plenty of New England dialers staying up for Jack Denny's late dance mu-

sic interludes . . . Study being made to find out who has been taking the Tower Health exercises the longest around the station—two studio door handles have been wrecked in the past ten days . . . Jack Beauvais is applying his full energies these days to the study of voice culture; two sessions weekly with a local maestro utilize, says he, most of his spare time from WEEL duties and all of his spare shekels . . . "Emo Movie Man" broadcast on Thursday Caroline Cabot period of "A Bit of This and A Bit of That" among more popular daylight features with requests for famous motion picture stars cluttering up the weekly mail in grand manner . . . Russell Door goes vacation fishing off the Florida Keys; something different for a guy with a reputation for staying on keys . . . What has happened to that annual swan-boat sail?—WBZ gang is non-committal . . . WEEL announcers who dramatize the fizz of Alka Selzer tablet to introduce each program invariably hoist the glass immediately after the program get underway . . . Four fish hauled in on Burton-Whitman-Baldwin-Gisburne expedition.



"You come back here Willie"!

Charlie and Willie and a host of other timely-tuneful Tattler features.

On the

Evening Tattler

Over

Station WEEL

Each Weekday

at

6:00 P.M.

Thursday, June 7 - Guy Lombardo's Orchestra on WJZ, 11.34 P.M.

Highlights

P.M. 3.15—Wilhelm Bachaus, pianist, from Berlin, NBC-WJZ 8.00—Rudy Vallee, NBC-WEAF 9.00—Captain Henry's Show Boat, NBC-WEAF Mark Warnow's Orchestra, CBS-WABC 9.30—Waring's Pennsylvanians, CBS-WABC 10.00—Connie Boswell, Stoopnagle and Budd, CBS-WABC 10.30—Josef Lhevinne, NBC-WJZ (All programs are listed in Eastern Daylight Saving Time. Eastern Standard Time is one hour earlier; Central Time is two hours earlier.) 6.45 A.M. EDT; 5.45 EST; 4.45 CT Toner Health Exercises, WEAF WEEI WGY, 1 h., 15 m. 7 A.M. EDT; 6 EST; 5 CT Musical Clock, WTIC WBZ, 1 h. 7.30 A.M. EDT; 6.30 EST; 5.30 CT Yoichi Hiraoka, xylophonist, WJZ McCormick Fiddlers, WLW Organ Reveille, WABC, 30 m. 7.45 A.M. EDT; 6.45 EST; 5.45 CT Pollock and Lawnhurst, WEAF WGY Alarm Clock, WEEI Jolly Bill and Jane, WJZ 8 A.M. EDT; 7 EST; 6 CT Radio City Organ, WEAF E. B. Rideout, weather, WEEI Collin Driggs, organist, WTIC, 30 m. Morning Devotions, WJZ KDKA Musical Clock, WGY Resume and Salon Musicale, WABC, 45 m. 8.15 A.M. EDT; 7.15 EST; 6.15 CT Don Hall Trio, WJZ WBZ WHAM 8.30 A.M. EDT; 7.30 EST; 6.30 CT Cheerio, WEAF WEEI WTIC WGY WLW, 30 m. Lew White, organist, WJZ WBZ WHAM WBAL KDKA, 30 m. 8.45 A.M. EDT; 7.45 EST; 6.45 CT Caroline Gray, pianist, WABC 9 A.M. EDT; 8 EST; 7 CT Herman and Banta, WEAF WEEI WLW Willis, McCullough, songs, WGY Breakfast Club, WJZ KDKA WHAM, 1 h. Virginia Reade, talk, WBZ Eton Boys, quartet, WABC 9.15 A.M. EDT; 8.15 EST; 7.15 CT Landt Trio and White, WEAF WEEI WGY WLW In the Luxembourg Gardens, WABC 9.30 A.M. EDT; 8.30 EST; 7.30 CT Bradley Kincaid, WEAF WEEI WTIC Little Jack Little's music, WGY Hymns, WLW 9.45 A.M. EDT; 8.45 EST; 7.45 CT The Sylvan Trio, WEAF WEEI WTIC Sylvan Trio, WLW Skip, Step and Happiana, WGY Mystery Chef, WABC Jean Gravelle's Orchestra, WMCA 10 A.M. EDT; 9 EST; 8 CT Breen and de Rose, WEAF, 30 m. Del Castillo, organist, WEEI, 30 m. Amsterdam Salute, WGY Mixing Bowl, WTIC, 30 m. Edward MacHugh, gospel singer, WJZ WBZ KDKA Health Talk, WLW Bill and Ginger, WABC Pure Food Hour, WOR, 1 h. 10.15 A.M. EDT; 9.15 EST; 8.15 CT Clara, Lu 'n' Em, WEAF WGY WLW WEEI WTIC WGY WLW Bob White, WTIC Castles of Romance, WJZ WHAM KDKA Duke Dewey's Orchestra, WBZ Ida Bailey Allen, WABC WCAU 10.30 A.M. EDT; 9.30 EST; 8.30 CT Treasure Chest, Howard Phillips, WEAF WEEI WLW Today's Children, WJZ WBZ KDKA News and Artist Recital, WABC 10.45 A.M. EDT; 9.45 EST; 8.45 CT News and Morning Parade, WEAF WTIC, 30 m. Musical Program, WEEI Pop Concert, WTIC, 30 m. Shopping Bag, WGY News and Radio Kitchen, WJZ WBZ Organ, WLW Academy of Medicine, Dr. W. C. Spain, "Hay Fever," WABC 11 A.M. EDT; 10 EST; 9 CT Galaxy of Stars, WGY, WLW U. S. Marine Band, WJZ WBZ WHAM KDKA, 30 m. Sunny Side Up, WABC 11.15 A.M. EDT; 10.15 EST; 9.15 CT Frances Lee Barton, WEAF WTIC WGY WEEI 11.30 A.M. EDT; 10.30 EST; 9.30 CT Jules Lande, violinist, WEAF WEEI WTIC, 30 m. Climacene Carnival, WGY, 30 m. Jack Arthur, baritone, WJZ WBZ WBAL

KDKA Market Reports, WLW Madison Ensemble, WABC, 30 m. 11.45 A.M. EDT; 10.45 EST; 9.45 CT Al and Lee Reiser, WJZ WBZ WHAM KDKA Painted Dreams, WGN WLW 12 N. EDT; 11 A.M. EST; 10 CT Gene Arnold's Commodores, WEAF WEEI WGY Mary Phillips, songs, WJZ Prairie Symphony, WLW, 30 m. "Voice of Experience," WABC WCAU "Around the Wheel of Events," WOR Burns and Reid, songs and patter, WMCA 12.15 P.M. EDT; 11.15 A.M. EST; 10.15 CT Johnny Marvin, tenor, WEAF WEEI Accordion, WTIC Martha and Hal, WGY Wendall Hall, songs, WJZ Connie Gates, songs, WEAF Variety, WOR Chuck Richards, songs, WMCA 12.30 P.M. EDT; 11.30 EST; Rex Battle's Ensemble, WEAF WGY, 30 m. Dance Music, WTIC, 30 m. Vic and Sade, WJZ Bond of Friendship, WLW Microphone Gossip, WABC Scherban's Orchestra, WCAU, 30 m.; (WABC from 12.45) Stocks, WMCA, 30 m. 12.45 P.M. EDT; 11.45 EST; 10.45 CT Markets, weather, WEAF, 30 m. Bradley Kincaid, WGY Merry Macs, WJZ The Texans, WLW 1 P.M. EDT; 12 N. EST; 11 A.M. CT 11.15 CT Markets, weather, WEAF Vagabonds, WGY, 30 m. Words and Music, WJZ Ohio Farm Bureau, WLW Sports flash and Do, Re Mi trio, WABC Dr. H. I. Strandhagen, WOR Lyric Strings, WMCA 1.15 P.M. EDT; 12.15 EST; 11.15 CT Pedro Via's Orchestra, WEAF The Honorable Archie, WJZ River and Markets, WLW Joan Marrow's Music, WABC Ariel Ensemble, WOR 1.30 P.M. EDT; 12.30 EST; 11.30 CT Orlando's Orchestra, WEAF WTIC, 30 m. WEEI Reading Circle, WEEI, 30 m. WGY Farm Program, WGY, 30 m. National Farm and Home Hour, WJZ WBZ WHAM WLW, 1 h. "Hometown Blues," WABC Beauty Guild, WAAB WMCA, 30 m. Theatre Club of the Air, WOR 1.45 P.M. EDT; 12.45 EST; 11.45 CT Tony Wons, WABC WCAU Otis Holley, soprano, WOR 2 P.M. EDT; 1 EST; 12 N. CT Stones of History, WEAF, 30 m. Silver Lining Hour, WEEI Rhythm Masters, WTIC Paul Curtis, tenor, WGY Ann Leaf, organist, WABC WCAU Dr. Arthur Frank Payne, WOR Theatre Notes, WMCA 2.15 P.M. EDT; 1.15 EST; 12.15 CT NEN Pure Food Institute, WEEI WTIC, 30 m. Musical Program, WEEI Household Chat, WGY School of the Air, Social Study, WHAM Romance of Helen Trent, WABC WCAU Mildred Cole and Tom Davis, WOR Sports talk, WMCA 2.30 P.M. EDT; 1.30 EST; 12.30 CT Trio Romantique, WEAF Three School Maids, WGY Smackout, WJZ WHAM Poetic Strings, WABC Time, weather, WBZ Hotel Gibson Orchestra, WLW "The Homemaker," WOR, 30 m. Handwriting Expert, WMCA 2.45 P.M. EDT; 1.45 EST; 12.45 CT Ma Perkins, WEAF WEEI WGY WLW Singing Cowboy, WTIC Vin Lindhe, diseuse, WJZ Edwin Otis, baritone, WBZ Popular Songs, WMCA 3 P.M. EDT; 2 EST; 1 CT Yascha Davidoff, basso, WEAF Hawaiian Band, WEEI WTIC Playhouse, WTIC, 30 m. Albany on Parade, WGY Sleepy Hall Orchestra, WJZ WBZ KDKA Camay Minstrel, WLW Metropolitan Parade, WABC Sally and Sue, WOR Song and piano, WMCA 3.15 P.M. EDT; 2.15 EST; 1.15 CT Upstaters Quartet, WEAF WEEI WGY Broadcast from Berlin, Wilhelm Bachaus, pianist, Beethoven's "Emperor" Concerto, accompanied by Berlin Radio orchestra, Otto Frickhoeffer conducting, WJZ WHAM KDKA Low Down, WLW Piano Recital, WOR Natalie Norman, singer, WMCA 3.30 P.M. EDT; 2.30 EST; 1.30 CT Woman's Radio Review, WEAF WEEI WGY, 30 m. With the World's Composers, WTIC, 30 m. Roy Shields' Orchestra, WJZ WHAM KDKA Home Forum Cooking School, WBZ, 30 m. Sputter and Whine, WLW National Student Federation Program, WABC Afternoon Musicale, WOR, 1 h. Stocks, WMCA 3.45 P.M. EDT; 2.45 EST; 1.45 CT Musical Keys, WJZ WHAM Charles Dameron, WLW



Eddie Duchin, NBC maestro, who gives several dance programs a week on the air with the aid of his skilled orchestra.

The Ambassadors, WABC George Spaulding, songs, WMCA 4 P.M. EDT; 3 EST; 2 CT Chuck Webb's Orchestra, WEAF WTIC WGY, 30 m. Stocks, Markets, WEEI Betty and Bob, drama, WJZ WBZ WHAM KDKA WLW Memory's Garden, WABC, 30 m. Contralto, organ, WMCA, 30 m. 4.15 P.M. EDT; 3.15 EST; 2 CT Hal Gould, baritone, WEEI Limey Bill, WGY Rhyming Rover, WJZ WBZ WHAM Matinee Highlights, WLW, 30 m. 4.30 P.M. EDT; 3.30 EST; 2.30 CT Hazel Glenn, WEAF WEEI John Sheehan, tenor, WGY Markets, KDKA Musical Keys, WJZ WBZ WHAM, 30 m. Jerry Cooper, tenor, WABC The Public Speaks, WOR, 30 m. Instrumental Group, WMCA 4.45 P.M. EDT; 3.45 EST; 2.45 CT The Lady Next Door, WEAF Dan McDonnell, basso, WEEI Stocks, WGY Columbia Salon Orchestra, WABC Currie's Club, WMCA 5 P.M. EDT; 4 P.M. EST; 3 CT Meredith Willson's Orchestra, WEAF WEEI WTIC, 30 m. Women's Club program, WJZ WBAL WHAM KDKA, 30 m. N. E. Agriculture, WBZ Margaret Carlisle, vocalist, WLW Resume and George Hall's Orchestra, WABC Stage Relief Fund Talk, WOR Sally's Party, WMCA, 30 m. 5.15 P.M. EDT; 4.15 EST; 3.15 CT The Monitor Views the News, WBZ Thru the Looking Glass, WLW Skippy, WABC WCAU "Once Upon a Time," WOR 5.30 P.M. EDT; 4.30 EST; 3.30 CT Winnie the Pooh, WEAF WEEI WTIC WGY Singing Lady, WJZ WBZ WHAM KDKA WLW Jack Armstrong, All-American Boy, WABC WCAU Karl Freund, talk, WOR Marvin Thomas, baritone, WMCA 5.45 P.M. EDT; 4.45 EST; 3.45 CT Echoes of Erin, WEAF WTIC Sam Curtis, radio chat, WEEI Vagabonds, WGY Little Orphan Annie, WJZ WBZ WHAM WLW KDKA U. S. Open Golf Championship, WABC WCAU "Sophisticates," trio, WOR Amanda Randolph, songs, WMCA 6 P.M. EDT; 5 EST; 4 CT Xavier Cugat's Orchestra, WEAF WLW, The Evening Tattler, WEEI, 30 m. Wrightville Clarion, WTIC, 30 m. Variety, WGY U. S. Navy Band, WJZ WHAM WBAL, 30 m. Joe and Bateese, WBZ Dinner Concert, WHAS Buck Rogers, WABC WCAU Uncle Don, WOR, 30 m. Ted Black's Orchestra, WMCA, 30 m. 6.15 P.M. EDT; 5.15 EST; 4.15 CT Sports Parade, WGY Bill Williams, WBZ Bobby Benson and Sunny Jim, WABC WCAU 6.30 P.M. EDT; 5.30 EST; 4.30 CT John B. Kennedy, WEAF WGY Baseball scores, current events, WEEI String Music, WTIC Stamp Club, WJZ WHAM Time, weather, WBZ Jack Armstrong, WLW Round Towners, quartet, WABC WCAU

Alert Pauline Alpert, pianist, WOR Dream Sweetheart, WMCA Trumpeters, WHEB 6.45 P.M. EDT; 5.45 EST; 4.45 CT Mary Small, songs, WEAF WTIC WGY Edison Salute, WEEI Lowell Thomas, news, WJZ WBZ WHAM KDKA WLW Household Music Box, WABC Mischa Raginsky, WCAU Phil Cook, WOR Five Star Final, WMCA 7 P.M. EDT; 6 EST; 5 CT Baseball Resume, WEAF Male quartet, WEEI Headline Highlights, WGY Amos 'n' Andy, WJZ WBZ WHAM KDKA WLW Sylvia Froos, WABC WCAU Ford Frick, sports, WOR Florence Richardson's Orchestra, WMCA 7.15 P.M. EDT; 6.15 EST; 5.15 CT Gene and Glenn, WEAF WEEI WGY Sports, WTIC Ed Lowry, WJZ WHAM Boston Fire Department, WBZ Emerson's Orchestra, WLW Just Plain Bill, WABC WCAU Jack Fischer's Orchestra, WAAB WICC Baseball Scores, WFEA String Ensemble, WHAS Silver-voiced Lovers, WMCA 7.30 P.M. EDT; 6.30 EST; 5.30 CT Shirley Howard; the Jesters, WEAF WTIC WGY Teddy Bergman, WEEI Richard Humber's Orchestra, WJZ WBZ WBAL WHAM KDKA, 30 m. Bob Newhall, WLW Paul Keast and Rollo Hudson's Orchestra, WABC WCAU Ray Perkins' Orchestra, WOR Folk Singer, WMCA 7.45 P.M. EDT; 6.45 EST; 5.45 CT The Goldbergs, WEAF WEEI WGY Talk, Governor Wilbur L. Cross, WTIC Boake Carter, WABC WCAU Melody Masters, WLW Leon Friedman's Orchestra, WMCA 8 P.M. EDT; 7 EST; 6 CT Rudy Vallee and guest artists, WEAF WEEI WTIC WGY WLW, 1 h. Grits and Gravy, mountain sketch, WJZ WBZ KDKA, 30 m. Emery Deutsch's Orchestra, WABC Girls' School Band, WPG, 30 m. Dinner Concert, WHAS Ford Frick, WOR Three Little Funsters, WMCA 8.15 P.M. EDT; 7.15 EST; 6.15 CT Easy Aces, WABC WCAU Jean Gravelle's Orchestra, WMCA 8.30 P.M. EDT; 7.30 EST; 6.30 CT Grace Hayes, songs, WJZ KDKA School, WBZ Gleason T. Archer, Dean, Suffolk Law School, WBZ Rates, amateur cracksmen, WABC WCAU, 30 m. Dinner Concert, WHAS, 30 m. Crazy Range Ramblers, WMCA 8.45 P.M. EDT; 7.45 EST; 6.45 CT Robert Simmons, tenor, WJZ Sammy Lerner's Orchestra, WBZ Fleetwing Travelers, KDKA "More Than News," WMCA 9 P.M. EDT; 8 EST; 7 CT Captain Henry's Show Boat, WEAF WEEI WGY, 1 h. (WLW from 9.30) Musical program, WTIC, 1 h. Death Valley Days, drama, WJZ WBZ WHAM KDKA WLW, 30 m. Mark Warnow, WABC WCAU, 30 m. Attilio Baggione's Orchestra, WGN, 30 m. Rod and Gun Club, WOR Bob Haring's Orchestra, WMCA, 30 m. 9.15 P.M. EDT; 8.15 EST; 7.15 CT "Romance in Song," WOR 9.30 P.M. EDT; 8.30 EST; 7.30 CT Eddie Duchin's Orchestra, WJZ WBZ WHAM KDKA, 30 m. Waring's Pennsylvanians, WABC WCAU Harry H. Ballin, WOR Ernie Golden's Orchestra, WMCA 9.45 P.M. EDT; 8.45 EST; 7.45 CT "The Witches Tale," WOR, 30 m. Trudy Thomas, songs, WMCA 10 P.M. EDT; 9 P.M. EST; 8 CT Paul Whiteman, Deems Taylor and Lee Wiley, Reading, Penn. Masonic Choir, WEAF WEEI WGY WLW, 1 h. Variety, WTIC, 1 h. Parade of the Provinces, Canadian program, WJZ WBAL, 30 m. (WHAM from 10.15) Prison Drama, WBZ, 30 m. Stoopnagle and Budd, Connie Boswell, Casa Loma Orchestra, WABC WCAU, 30 m. Rochester Evening School of the Air, Chemistry, WHAM Manhattan Singers, WMCA 10.15 P.M. EDT; 9.15 EST; 8.15 CT Current Events, WOR "Romance of the Violin," WMCA 10.30 P.M. EDT; 9.30 EST; 8.30 CT Josef Lhevinne, Frank Black, conducting, WHAM WBAL, 30 m. NBC Symphony Orchestra, WJZ WBZ Romance of Dan and Sylvia, KDKA Doris Lorraine, Cadets, WABC "Ramblin' Round," WOR, 30 m. Organ, WPG Melody Boys, WMCA

Police Radio Station Meters Location WPEV 121.5 Pawtucket, R. I. WPEM 121.5 Woonsocket, R. I. WPDR 122.05 Rochester, N. Y. WPEA 122.05 Syracuse, N. Y. WPEF 122.4 Bronx, N. Y. WPEE 122.4 Brooklyn, N. Y. WPEG 122.4 New York City WMJ 123.8 Buffalo, N. Y. WPGG 124.37 Albany, N. Y. WPED 175.23 Arlington, Mass. WPEI 175.23 East Providence, R. I. WPFA 175.23 Newton, Mass. WPGF 175.23 Providence, R. I. WMP 190.66 Framingham, Mass. WPEW 190.66 Northampton, Mass. WPEL 190.66 Bridgewater, Mass. WPGC 195.57 Albany, N. Y. WEY 630.00 Boston, Mass. (Fire)

10.45 P.M. EDT; 9.45 EST; 8.45 CT Nancy Martin, KDKA Playboys, WABC WCAU Three Blue Notes, WBZ Ben Pollock's Orchestra, WMCA 11 P.M. EDT; 10 EST; 9 CT Siberian Singers, WEAF WTIC E. B. Rideout, WEEI Johnny Johnson's Orchestra, WGY, 30 m. The Cavaliers, WJZ WBAL Weather, temperature, sports, WBZ Sports, KDKA Champions Orchestra, WLW, 30 m. Vera Van, soprano, WABC "Moonbeams," WOR, 30 m. Tom Devochier's Orchestra, WMCA 11.15 P.M. EDT; 10.15 EST; 9.15 CT Kathryn Newman, soprano, WEAF WTIC WGY News, Musical Twins, WEEI Poet Prince, WJZ WBZ News, Barnet's Orchestra, WABC Art Farrar's Orchestra, KDKA Polly Andrews' Orchestra, WMCA 11.30 P.M. EDT; 10.30 EST; 9.30 CT News and Ghost Story, WEAF WEEI WTIC WGY, 30 m. News and Guy Lombardo's Orchestra, WJZ WBZ WHAM KDKA Crosley Roamios, WLW, 30 m. Brifo's Orchestra, WOR, 30 m. Henry Biagini's Orchestra, WHAS, 30 m. Orchestras, WGN, 3 hrs. Orchestras, WMCA, 2 hrs., 30 m. 11.45 P.M. EDT; 10.45 EST; 9.45 CT Musical Twins, WEEI Henry Busse's Orchestra, WABC WCAU 12 M. EDT; 11 P.M. EST; 10 CT Dream Singer and Jimmy Lunceford's Orchestras, WEAF WEEI WGY, 30 m. Don Bestor's Orchestra, WJZ WBZ WHAM 30 m. Los Amigos, WLW, 30 m. Jack Berger's Orchestra, WOR, 30 m. Reggie Childs' Orchestra, WABC WCAU, 30 m. 12.30 A.M. EDT; 11.30 EST; Harold Sterns Orchestra, WEAF WGY Twin City Dancing, WJZ WBZ WHAM KDKA, 30 m. Castle Farm Orchestra, WLW, 30 m. Charlie Davis' Orchestra, WABC WCAU, 30 m.

Bachaus As Soloist In Piano Concerto

WILHELM BACHAUS, eminent pianist, will be heard as soloist in a concert to be broadcast from Berlin over an NBC-WJZ network on Thursday, June 7, at 3.15 P.M. BACHAUS will play the noble "Emperor" Concerto by BEETHOVEN, one of the greatest concertos for piano in musical literature. He will be accompanied by the Berlin Radio Orchestra, under the direction of OTTO FRICKHOEFFER.

EVERY subscriber to or other purchaser of The MICROPHONE is entitled to share its benefits with a friend. Write to Circulation Manager, The MICROPHONE, No. 34 Court Square, Boston, Massachusetts, giving the names and addresses of those you'd like to become familiar with The MICROPHONE. A sample copy will be sent promptly to each name given, without obligation.

STATION DIRECTORY Page 4

An Interview In Which One Of A Mad Trio Won't Talk, Or Can't

Points On Good Air Technique

By JUNE AULICK

They used to be known as "The Funnyboners," and lately we discovered another reason why that appellation was just right for GORDON, DAVE and BUNNY, or if you must be formal, Messrs. GRAHAM, GRANT and COUGHLIN.

These madcaps of the air, now known as the "Oxol Trio," never can find time for anything as serious as an interview, so the distracted reporter slipped some questions under the studio door while the boys were rehearsing for their program broadcast over a WABC-Columbia network on Mondays, Tuesday, Wednesdays and Fridays from 5.45 to 6.00 P. M.

After chasing them via secretaries, secret emissaries and spies disguised as FULLER Brush men, we finally received their written answers, jotted down on the backs of old laundry bills. GORDON just turned in a blank page. When questioned, GORDON responded in sign language that he "refused to talk."

Questions and Answers

Here are the questions with replies as written in DAVE GRANT'S fine old Italian hand, and BUNNY COUGHLIN'S quaint scribble:

Question: How do you build the program, get in a huddle before coming to the studio, or do it all there?

DAVE: "We've always wanted to get in a huddle, but we can't find one big enough for us all to get into, so we usually sit around in a blue funk with red trimming, and rehearse there."

BUNNY: "First we consult an architect who has a reputation for building programs. It's all done with blue prints."

Question: Why do you specialize in novelty songs?"

DAVE: "To keep the wolf from the door."

But DAVE sat up nights to think of that one.

BUNNY: "To avoid repeating 'The Last Round Up.'"

Question: What are the names of your accompanists?"

DAVE: "We don't like to be alone, so I accompany the trio when we sing. Carl Kress is responsible for the excellent guitar playing behind me, and Joe Green and Andy Sanella do their bit at times."

Now we're getting somewhere.

Question: Have you any imitators?"

DAVE: "We had one but it died; it wouldn't eat fish."

Maybe they should have tried spinach.

BUNNY: "No, there is no one to whom we can point and say, 'You're anaemic.' * Anaemic—one who imitates us."

Question: Do you ad lib for the mike, or do all your work from scripts?"

DAVE: "Why should we ad lib for the mike; it never did anything for us. (Not much.)"

Favorite Songs

Question: What are your favorite songs and why?"

DAVE: "The St. Louis Blues," 'Raggin' the Scale' and 'Columbia the Gem of the Ocean.' Because I wrote them." Yeah?

BUNNY: "Novelty songs. Because they are not hackneyed."

Question: Are they the same

'Sno Use Talking About This Photo



GORDON, DAVE and BUNNY, alias GRAHAM, GRANT and COUGHLIN, appear gamboling in the schnee. The gentleman on the right has been picked the winner. When they are not doing something like this they are heard on the WABC network at 5.45 P. M. Monday, Tuesday, Wednesday and Friday.

which your fans prefer?

DAVE: "They better be."

BUNNY: "Most fans prefer ballads which we include in all programs."

Question: What were the outstanding events that took place while you were in Boston?"

DAVE: "My birth, marriage and my orchestra's engagement to play the big ball at the Dartmouth Winter Carnival."

About Dave

We happen to know a little about that one. DAVE was born in Newton, Mass., on the 24th of August, 1902, and has been wondering ever since whether his musical talent was inherited from his grandmother or from an uncle who ran a medicine show in the Middle West.

After spending three years at the Massachusetts Institute of Technology and finding it only important to him as far as musical clubs were concerned, DAVE left and went to the New England Conservatory of Music. He spent one year there attempting, with little success, to learn how to read music.

While at M. I. T. DAVE organized an orchestra in order to pay his way through school. The enterprise proved successful in and around Boston at college and country club dances, and DAVE continued with it until 1929 when it broke up after a vaudeville tour of the country.

A vocal trio, which included BUNNY COUGHLIN, had been the sole survivor after the wreck of DAVE'S band and it wasn't long before DAVE'S idle hours were spent before the microphone in a Boston station with COUGHLIN and a variable third. Then came GORDON GRAHAM to bring per-

manency to the trio.

BUNNY recalls at the outstanding events of his Boston days:

"The Harvard-Army game, Armistice Day, Boston Tea Party (We were the three on the left), Boston Braves winning the pennant in 1914."

Plays Five Instruments

BUNNY (ALFRED A.) COUGHLIN, like his fellow "Funnyboners," also hails from the Bay State, claiming Boston as his birthplace, and May 29, 1904, as his birth date. The only unusual facts about his family, he asserts, are that his sister is a chemist and that he plays the violin, saxophone, clarinet, banjo and radio.

When through school, BUNNY dodged work for a while by studying in the school of the Boston Elevated Company and remaining there as a student as long as he could. At last a job caught up with him in the offices of the company, but only for a short time. He was fired for singing in the office.

To his belated delight, however, the same firm engaged the GRANT, GRAHAM and COUGHLIN trio a few years later to sing for them on a radio program.

Office work behind him, BUNNY toured Europe as soloist and saxophonist with an American dance orchestra and got as far as Sweden with it. There he stayed, giving saxophone and crooning lessons to eager Scandinavians.

BUNNY'S next venture, upon his return from abroad, was opening a sales agency for a curtain invention. Business was good for one month—after that his money melted away and he gave up that career when his stenographer fired him. Shortly after, he met DAVE GRANT, joined the orchestra, which organized the trio,

which became "The Funnyboners," which became the "Oxol

A Colorful History Of Their Lives

Trio"—and there you are!

Hates Parlor Games

BUNNY is married and hates parlor games or any other games. Whenever he needs new program ideas, BUNNY takes a night railroad trip—his best ideas come to him when he is trying to, but can't, sleep.

GORDON GRAHAM, youngest of the three mad melodeers, was born March 16, 1908, in Cambridge, Mass., but was moved to Springfield when he was only three weeks old. There he grew up until he reached the height of six feet, four inches, and it was time to go to Dartmouth College.

At Dartmouth, GORDON was a soloist with the Glee Club and in his senior year was leader of the Club when it won the United States championship title. After graduation, he landed a job in a show, "The Dagger and the Rose." Both show and job lasted six weeks, five of rehearsal and one of performances in Atlantic City, but GORDON found it good fun and learned how to live on \$5 a week.

Like DAVE GRANT, GORDON came back to Boston. He wanted to become a newspaperman, but landed the work of a singing master of ceremonies in a night club, while waiting for the job to materialize.

His hobby is book collecting but, he says, he can't afford it, so it's just a hobby. Prefers horse-back riding to other sports, and D. H. LAWRENCE to other authors.

Short Wave Directory

Station	Metres	Location	Time (E.D.T.)
GSH	13.97	Daventry, England	8-9.30 A. M.
FYA	19.68	Pontoise, France	8 A. M.-2 P. M.
DJB	19.73	Zeesen, Germany	8-10.45 A. M.
GSP	19.82	Daventry, England	10-12 A. M.
HVJ	19.84	Vatican City, Rome	6 and 11 A. M.
CNR	23.38	Rabat, Morocco	8.30-10 A. M. (Sun.)
RNE	25.00	Moscow, U. S. S. R.	7-8, 11-12 A. M. (Sun.)
FYA	25.20	Pontoise, France	3-6 P. M.
GSE	25.28	Daventry, England	10 A. M.-1 P. M.
ZRO	25.40	Rome, Italy	2.15-7 P. M.
DJD	25.51	Zeesen, Germany	1.45-5.30 P. M.
GSD	25.53	Daventry, England	2-9 P. M.
PHI	25.57	Huizen, Holland	8.30-10.30, Mon., Wed., Fri., Sat., Sun.
EAQ	30.44	Madrid, Spain	6.15-8 P. M., 2-4 P. M. Sats.
CT1AA	31.25	Lisbon, Portugal	5.30-8 P. M., Tues., Fri.
HLB	31.27	Geneva, Switzerland	6.30-7.15 P. M., Sat.
VK2ME	31.28	Sydney, Australia	1-11 A. M., Sun.
DJA	31.38	Zeesen, Germany	6-8.30 P. M.
VK3ME	31.55	Melbourne, Australia	6-8 A. M., Sat.
GSB	31.55	Daventry, England	2-6.30 P. M.
CNR	37.33	Rabat, Morocco	3-6 P. M., Sun.
HKE	41.55	Bogota, Colombia	9-10 P. M., Tues., Fri.
LCL	42.92	Jeloy, Norway	12 M-7 P. M.
HAS	43.86	Budapest, Hungary	4-6.30 P. M.
PRADO	45.31	Riobamba, Ecuador	10-12 P. M., Thurs.
REN	45.38	Moscow, U. S. S. R.	2-7 P. M.
HJ1ABB	46.51	Barranquilla, Colombia	7-11 P. M.
ZGE	48.92	Kuala Lumpur, Malay States	Daily
PK1WK	49.02	Bandoeng, Java	8-10 A. M., Tues., Fri.
VUC	49.10	Calcutta, India	6.7.30 A. M.
CP5	49.30	La Paz, Bolivia	10.30-1 P. M., Sat.
HIX	49.50	Santo Domingo	7.30-9., 10-12.30 P. M.
VQ7LO	49.50	Nairobi, Africa	9.10-11.10, Tues., Fri.
DJC	49.83	Zeesen, Germany	12-3 P. M.
RV59	50.00	Moscow, U. S. S. R.	10-12.30 P. M.
HVJ	50.26	Vatican City, Rome	5-6 P. M.
TGX	50.50	Guatemala City, S. A.	3-3.15 P.M.; A.M., Sun.
HJ4ABA	51.49	Colombia, S. A.	3-6 A. M., Sun.
HCK	73.00	Quito, Ecuador	2-3, 8.30-11 P. M.
RV15	70.65	All Ships	9-12 P. M.
HCJB	52.65	Khbarovck, U. S. S. R.	Heard Irregularly
	67.87 to 73.17	Quito, Ecuador	2-10 A. M.
			8.30-10.45 P. M.

NOTE: All times given are week-day schedules, unless indicated otherwise. The stations listed are regular broadcasters at the times indicated. Other stations which you may hear or which are used for international telephone have been purposely omitted.

Friday, June 8 - Cities Service Concert on NBC-WEAF at 8 P.M.

Highlights

- P.M.**
- 3.00—Lanny Ross, Conrad Thibault, Mary Lou, NBC-WEAF
 - 5.00—Colonel Dean Ivan Lamb, NBC-WJZ
 - 8.00—Cities Service Concert, NBC-WEAF
Chocolaters, NBC-WJZ
 - 9.00—Leah Ray, NBC-WBZ
 - 9.30—Jack Whiting, CBS-WABC
 - 10.00—Stories That Should Be Told, NBC-WJZ
Program of the Week, CBS-WABC
 - 10.30—Jack Benny, NBC-WEAF

(All programs are listed in Eastern Daylight Saving Time. Eastern Standard Time is one hour earlier; Central Time is two hours earlier.)

- 6.45 A.M. EDT; 5.45 EST; 4.45 CT
Tower Health Exercises, WEAFF WEEI WGY, 1 h.
- 7 A.M. EDT; 6 EST; 5 CT
Musical Clock, WTIC
- 7.30 A.M. EDT; 6.30 EST; 5.30 CT
Yoichi Hiraoka, xylophone, WJZ WBAL
McCormick's Fiddlers, WLW, 30 m.
Organ Reveille, WABC, 30 m.
- 7.45 A.M. EDT; 6.45 EST; 5.45 CT
Pollock and Lawnhurst, WEAFF WGY
Jolly Bill and Jane, WJZ WBAL
- 8 A.M. EDT; 7 EST; 6 CT
Organ Rhapsody, WEAFF WTIC
E. B. Rideout, WEEI
Morning Devotions, WJZ KDKA
Resume, Ambassadors, WABC
- 8.15 A.M. EDT; 7.15 EST; 6.15 CT
Don Hall Trio, WJZ WBZ WBAL WHAM
Sunny Melodies, WABC, 30 m.
- 8.30 A.M. EDT; 7.30 EST; 6.30 CT
Cheerio, WEAFF WEEI WTIC WGY WLW, 30 m.
Sunny Melodies, WABC, 45 m.
Lew White at Dual organ, WJZ KDKA, 30 m., WBZ, 15 m. (WHAM from 8.45)
- 8.45 A.M. EDT; 7.45 EST; 6.45 CT
Junior High School Program, WBZ
Caroline Gray, piano, WABC
- 9 A.M. EDT; 8 EST; 7 CT
Sam Herman, xylophonist, WEAFF
Lal Levey's Orchestra, WGY
Mystery Chef, WJZ WBZ WBAL WLW
Lo Re Mi, female trio, WABC
- 9.15 A.M. EDT; 8.15 EST; 7.15 CT
Landt Trio and White, WEAFF WEEI WGY
WLW
The Breakfast Club, news at 9.55, WJZ
WHAM WBAL, 45 m., KDKA, 15 m.
(WBZ from 9.30)
Metropolitan Parade, WABC
- 9.30 A.M. EDT; 8.30 EST; 7.30 CT
"We Shine 'Em" Boothacks, WEAFF WTIC
Billy Rose, tenor, WGY
Breakfast Club, WJZ WHAM
Hymns, WLW
Helen Barr, Edward Jordan, WEEI
- 9.45 A.M. EDT; 8.45 EST; 7.45 CT
News and Cyril Tobin, violin, WEAFF WEEI
WTIC WLW
Skip, Step and Happiana, WGY
- 10 A.M. EDT; 9 EST; 8 CT
Breen and De Rose, WEAFF WEEI WTIC
Mr. and Mrs., WGY
Edward MacHugh, baritone, WJZ WBZ
KDKA
Mrs. Littleford, WLW
Madison Singers, WABC WCAU
Emily Post, speaker, Sydney Nesbitt, baritone,
Muriel Pollack, Salada Strings, WOR, 30 m.
- 10.15 A.M. EDT; 9.15 EST;
Clara, Lu 'n' Em, WEAFF WEEI WGY
WLW
Hazel Arth, contralto, WJZ WHAM
Duke Dewey, WBZ
Bill and Ginger, WABC WCAU
Bob White, WTIC
- 10.30 A.M. EDT; 9.30 EST; 8.30 CT
Ralph Kirberry, songs, WEAFF
Del Castillo, organist, WEEI
Today's Children, sketch, WJZ WBZ WBAL
KDKA
Jack Berch, WLW
News and Round Towners Quartet, WABC
- 10.45 A.M. EDT; 9.45 EST; 8.45 CT
Betty Crocker, cooking talk, WEAFF WEEI
WGY WLW
Jack and Loretta Clemens, WJZ
News, time, weather, WBZ
Carolyn Gray, WABC
- 11 A.M. EDT; 10 EST; 9 CT
Morning Parade, WEAFF WEEI WTIC
WLW, 45 m.
Jules Allen, cowboy songs, WJZ KDKA
Spiritual Singers, WLW
Cooking Close Ups, WABC
- 11.15 A.M. EDT; 10.15 EST;
Will Osborne's Orchestra, WABC
Alice Joy, WJZ KDKA
News, WLW
- 11.30 A.M. EDT; 10.30 EST;
9.30 CT
Rhythm Ramblers, WJZ WBZ KDKA, 30 m.
Sandra Roberts, songs, WLW
Tony Wons, WABC

- 11.45 A.M. EDT; 10.45 EST;
9.45 CT
Martha and Hal, WGY
Painted Dreams, WGN, WLW
Ben Alley, music, WABC
- 12 N. EDT; 11 A.M. EST; 10 CT
Gene Arnold, the Commodores, WEAFF WEEI
WGY
Silver Strains, WTIC
Soloist, WJZ
Monitor Views the News, WBZ
Bob Albright, WLW
Voice of Experience, WABC WCAU
Girl's Trio, WOR
Lyric Strings, WMCA
- 12.15 P.M. EDT; 11.15 A.M. EST;
10.15 CT
Johnny Marvin, songs, WEAFF WEEI WTIC
Martha and Hal, WGY
Wendell Hall, ukulele, WJZ WHAM
Time, weather, temperature, WBZ
Alice Michot, soprano, WLW
Betty Barthell, songs, WABC WCAU
Gil Gilbert, baritone, WMCA
Variety, WOR
Chick Richards, songs, WMCA
- 12.30 P.M. EDT; 11.30 EST;
10.30 CT
Rex Battle's Ensemble, WEAFF, 30 m.,
WGY, 15 m.
Stocks, Markets, WEEI
Luncheon Music, WTIC, 40 m.
Vic and Sade, WJZ WBZ WHAM KDKA
George Scherban's Orchestra, WABC, 30 m.
Bonds of Friendship, WLW
Organ, WOR, 30 m.
Two pianos, tenor, WMCA, 45 m.
- 12.45 P.M. EDT; 11.45 EST;
10.45 CT
Cabot and Castillo, WEEI, 30 m.
Radio Gang, WGY
Songfellows, WJZ WBZ WHAM
The Texans, WLW
- 1 P.M. EDT; 12 N. EST; 11 A.M. CT
Markets, weather, WEAFF
Vagabonds, WGY
Words and Music, WJZ
Weather and N. E. Agricultural Report,
WBZ
Ohio Farm Bureau, WLW
Sports flash and The Instrumentalists,
WABC WCAU
Dance Marathon, WAAB
Farm Flashes, WFEA
Dr. H. I. Standhagen, WOR
- 1.15 P.M. EDT; 12.15 EST;
Emerson Gill's Orchestra, WEAFF
Health Review, WEEI
Peeping Tom and George, WGY
The Honorable Arch, WJZ
Markets, WLW
Artist Recital, WABC WCAU
Ariel Ensemble, WOR
News, WMCA
- 1.30 P.M. EDT; 12.30 EST;
11.30 CT
Airbreaks, WEAFF WTIC, 30 m.
N. E. Kitchen, WEEI
Farm Program, WGY
National Farm and Home Hour, WJZ WBZ
WHAM KDKA WLW, 1 h.
George Hall's Orchestra, WABC WCAU,
30 m.
Beauty Guild, WMCA
Bobby Burns, poems, WOR
String Trio, WOR
- 2 P.M. EDT; 1 EST; 12 N. CT
Magic of Speech, WEAFF WTIC, 30 m.;
WEEI, 15 m.
Anto nette Hasteal, WGY
Bill Huggins, songs, WABC WCAU
Dr. Arthur Frank Payne, WOR
Music Talk, WMCA
- 2.15 P.M. EDT; 1.15 EST;
12.15 CT
N. E. Radio Kitchen, WEEI
School of the Air—art appreciation, WHAM
Romance of Helen Trent, WABC WBAL
Virginians, male quartet, WOR
Sports spotlight, WMCA
- 2.30 P.M. EDT; 1.30 EST; 12.30 CT
Song Trail, WEAFF WTIC
Albany on Parade, WGY
Smackout comedy, WJZ
Paul Pendarvis Orchestra, WLW
Books and Authors, WBZ
Buchell's Orchestra, WLW
Ann Leaf, organ, WABC
"The Homemaker," WOR, 30 m.
Dinner Club, WMCA
- 2.45 P.M. EDT; 1.45 EST; 12.45 CT
Ma Perkins, WEAFF WGY WLW
WGY WLW, 1 h.
Singing Cowboy, WTIC
Alden Edkins, baritone, WJZ WBZ
Bob Stanley, tenor, WMCA
- 3 P.M. EDT; 2 EST; 1 CT
Maria's Matinee, Lanny Ross, Mary Lou,
Conrad Thibault, WEAFF WEEI WTIC
WGY, 1 h.
Margaret Santry interviews, WJZ WBZ
WHAM KDKA
Hurdy Gurdy Man, WABC
Show Boat Boys, WOR
"Women and Money," WMCA
- 3.15 P.M. EDT; 2.15 EST; 1.15 CT
Don Carlos' Orchestra, WJZ KDKA
Adrian O'Brien, WBZ
The Eton Boys, WABC
Henry and Edward Peterson, WOR
Mona Lowe, contralto, WMCA
- 3.30 P.M. EDT; 2.30 EST; 1.30 CT
Temple of Song, WJZ WHAM, 30 m.
Home Forum Cooking School, WBZ, 30 m.
The Grab Bag, WABC
Stock Quotations, WMCA
Garden Club, WOR
- 3.45 P.M. EDT; 2.45 EST; 1.45 CT
Afternoon Musicale, WOR, 45 m.
Natalie Page, mezzo soprano, WMCA
- 4 P.M. EDT; 3 EST; 2 CT
Orlando's Cosmopolitans, WEAFF WTIC,
30 m.; WGY, 15 m.
Betty and Bob, sketch, WJZ WBZ WHAM
KDKA WLW
Dictators, WABC
Soprano, tenor, organ, WMCA, 30 m.

Romantic



ALICE FROST, actress and impersonator, who plays the heroine in the "Taxi" dramas starring MAX BAER, broadcast Mondays, Wednesdays and Fridays at 7.45 P.M. over an NBC-WJZ network.

- 4.15 P.M. EDT; 3.15 EST; 2.15 CT
Nellie Revel at Large, WEAFF WEEI WTIC
"Books," Levere Fuller, WGY
Singing Stranger, WJZ WBZ WHAM KDKA
Matinee Highlights, WLW
- 4.30 P.M. EDT; 3.30 EST; 2.30 CT
Norman Cloutier's Orchestra, WEAFF WEEI
WTIC, 30 m.
Vagabonds, WGY
Jackie Heller, tenor, WJZ WBZ, 30 m.
U. S. Army Band, WABC, 30 m.
Marimba Orchestra, WOR, 30 m.
Street Forum, WMCA
- 4.45 P.M. EDT; 3.45 EST; 2.45 CT
Stocks, WGY
William Tundell's Interviews, WJZ
William Hargrave, baritone, WOR
Mystery Girl, advice, WMCA
- 5 P.M. EDT; 4 EST; 4 CT
Madame Sylvia, WEAFF WEEI WTIC WGY,
15 m.
Richard Lee William, baritone, WTIC
Palmer Clark's Orchestra, WJZ, 30 m.
Agricultural Markets, WBZ
Three Star Voices, WLW, 30 m.
Resume and Frank Dailey's Orchestra,
WABC
"Dogs," WOR
Sally's Party, WMCA, 30 m.
- 5.15 P.M. EDT; 4.15 EST; 3.15 CT
Oswald Mazzucchi, cellist, WEAFF WEEI
Modernaires, WTIC
The Monitor Views the News, WBZ
Skippy, WABC WCAU
"Cocktail Hour," WOR
- 5.30 P.M. EDT; 4.30 EST; 3.30 CT
Frank Merriwell, WEAFF WEEI WTIC
WTAM WGY
Singing Lady, WJZ WBZ WHAM WLW
KDKA
Jack Armstrong, All-American Boy, WABC
WCAU
Robert Rand, WOR
Piano, WMCA
- 5.45 P.M. EDT; 4.45 EST; 3.45 CT
"Alice in Orchestralia," WEAFF WEEI
Melodies of Romance, WTIC
Bradley Kincaid, WGY
Little Orphan Annie, WJZ WBZ WHAM
WLW
Gordon, Dave and Bunny, WABC WCAU
Bob White's Scrap Book, WCAU
Billy Dauscha, WOR
Baseball talk, WMCA
- 6 P.M. EDT; 5 EST; 4 CT
Xavier Cugat's Orchestra, WEAFF WLW,
30 m.
Evening Tattler, WEEI, 30 m.
Wrightville Clarion, WTIC, 30 m.
Evening Brevities, WGY
Angelo Ferdinand's Orchestra, WJZ
WHAM, 30 m.
O'Leary's Irish Minstrels, WBZ
H. V. Kaltenborn, news, WABC
Uncle Don, WOR, 30 m.
Ted Black's Orchestra, WMCA, 30 m.
- 6.15 P.M. EDT; 5.15 EST; 4.15 CT
Joe and Eddie, WGY
Bill Williams, WBZ
Bobby Benson and Sunny Jim, WABC
WCAU
- 6.30 P.M. EDT; 5.30 EST; 4.30 CT
Musical Mosaics, WEAFF
Scores, current events, WEEI
Musical Appetizers, WTIC
Frolics, WGY, 30 m.
O'Leary's Irish Minstrels, WJZ WHAM
Temperature, weather, WBZ
Jack Armstrong, WLW
Frojoy Frolics, WGY
Boys' Club, WOR
Heat Wave Trio, WMCA
- 6.45 P.M. EDT; 5.45 EST; 4.45 CT
William Hain, tenor, WEAFF WTIC
Studio Chorus, WEEI
Lowell Thomas, news, WJZ WBZ WHAM
KDKA WLW
Beale Street Boys, WABC WCAU
Ray Perkins, WOR
Five Star Final, WMCA

- 7 P.M. EDT; 6 EST; 5 CT
Baseball Resume, WEAFF
Comedy Stars, WEEI
Don Dixon, songs, WGY
Amos 'n' Andy, WJZ WBZ WHAM
Nick Lucas, WABC WCAU
Ford Frick, sports, WOR
Dinner Concert, WHAS, 30 m.
Florence Richardson's Orchestra, WMCA
- 7.15 P.M. EDT; 6.15 EST; 5.15 CT
Gene and Glenn, WEAFF WEEI WGY
Dick Tracy, detective, WBZ
"The Approach of the Unit' States to
World Affairs," Ogden Mills, WJZ
WBZ WHAM
Sports, WTIC
Joe Emerson, songs, WLW
Just Plain Bill, WABC WNAC WCAU
Front Page Drama, WOR
- 7.30 P.M. EDT; 6.30 EST; 5.30 CT
Fur Trappers, WEAFF WGY
After Dinner Revue, WEEI
Little Symphony, WTIC
Utica Club Singers, WGY
Bob Newhall, WLW
Buccaneers Quartet, WBZ
Music on the Air, Jimmy Kemper, WABC
WCAU
Jack Arthur, baritone, WOR
Cowboy Songs, WOR
Fishermen's Guide, WMCA
- 7.45 P.M. EDT; 6.45 EST; 5.45 CT
The Goldbergs, WEAFF WEEI WGY
Smooth Rhythms, WTIC
Max Baer, "Taxi," WJZ WBZ KDKA
WHAM
Melody Masters, WLW
Boake Carter, WABC
Sea Stories, WOR
Fallon's Orchestra, WMCA
- 8 P.M. EDT; 7 EST; 6 CT
Cities Service Concert, Olga Albani, so-
prano, quartet, Banta and Rettenberg,
piano duo, WEAFF WEEI WTIC, 1 h.,
WGY, 30 m.
Ethel Shutta, Walter O'Keefe Dolan's Or-
chestra, WJZ WBZ WHAM WBAL
KDKA, 30 m.
Modern Treasury Hunt, WLW
Fray and Braggiotti, WABC
Chalfonte-Haddon Hall Trio, WPG, 1 h.
Billy Jones, Selvin's Orchestra, WOR, 30 m.
Dinner Concert, WHAS
Funsters, WMCA
- 8.15 P.M. EDT; 7.15 EST; 6.15 CT
Prairie Symphony, WLW
Easy Aces, WABC
- 8.30 P.M. EDT; 7.30 EST; 6.30 CT
Farm Forum, WGY, 30 m.
Maple City Four, WJZ WBZ KDKA
Unbroken Melodies, WLW
True Story Court, WABC WCAU, 45 m.
Varieties of 1934, WOR, 30 m.
Dinner Concert, WHAS, 30 m.
Ramblers, WMCA
- 8.45 P.M. EDT; 7.45 EST; 6.45 CT
Babe Ruth, baseball comment, WJZ WBZ
WHAM WBAL KDKA
Radio Court, WLW
"More Than News," WMCA
- 9 P.M. EDT; 8 EST; 7 CT
Waltz Time, Frank Munn and Vivienne Se-
gal, Abe Lyman's Orchestra, WEAFF WEEI
WGY, 30 m.
Songs, WTIC
Phil Harris Orchestra, Leah Ray, WJZ WBZ
WHAM WBAL KDKA
Will Osborne's Orchestra, WOR WLW,
30 m.
Stars on Parade, WGN
Songs, music, WMCA, 30 m.
- 9.15 P.M. EDT; 8.15 EST; 7.15 CT
Lit le Jack Little's Orchestra, WABC WCAU
Melody Moments, WTIC
Movie Broadcast, WPG
- 9.30 P.M. EDT; 8.30 EST; 7.30 CT
One Night Stands, Pick and Pat, Blackface
comedians, WEAFF WTIC WGY, 30 m.
Scott's Variety, WEEI
Harry McNaughton, Irene Beasley, WJZ
WBZ WHAM KDKA, 30 m.
Phil Baker, WJZ WBZ WHAM KDKA, 30 m.
Jones and Hare, WLW
Jack Denny's Orchestra, Jeannie Lang and
Johnny Green, WABC, 30 m.
Hotel Traymore Orchestra, WPG, 30 m.
"The Champions," WOR, 30 m.
Jack Douglas' variety, WMCA, 30 m.
- 9.45 P.M. EDT; 8.45 EST; 7.45 CT
Armand Program, WLW
- 10 P.M. EDT; 9 P.M. EST; 8 CT
The First Nighter, June Meredith, WEAFF
WEEI WTIC WGY, 30 m.
"Stories That Should Be Told," Fulton
Oursler, WJZ WBZ KDKA WLW
"The Program of the Week," WABC WCAU,
30 m.
Natalie Alt, Arthur Wright, Orchestra, WGN,
30 m.


- Dance Orchestra, WPG
"1/4 hr. in 3/4 time," WOR
Fiasco, WMCA
- 10.15 P.M. EDT; 9.15 EST; 8.15 CT
Mario Cozi, baritone, WJZ
Billy Losiez's Orchestra, WBZ
Henry Thes and Pepstels, WLW
Organ, WMCA
- 10.30 P.M. EDT; 9.30 EST; 8.30 CT
Jack Benny, Mary Livingston and Don Bes-
tor's Orchestra, WEAFF WEEI WTIC WGY
WLW, 30 m.
String Symphony, Frank Black, director,
WJZ WHAM, 30 m.
Dan and Sylvia, KDKA
Edgewater Beach Orchestra, WABC WCAU
Enchanted Violin, WOR
Friday Frolics, WOR, 30 m.
Melody Boys, WMCA
- 10.45 P.M. EDT; 9.45 EST; 8.45 CT
Joe Rines' Orchestra, WBZ
Euth Murray, soprano, WABC
Nancy Martin, KDKA
The Phantom, WFG
Pollock's Orchestra, WMCA
- 11.15 P.M. EDT; 10.15 EST;
George R. Holmes, International News Scr-
vice, WEAFF WTIC
E. B. Rideout, WEEI
Doc Peyton's Orchestra, WGY, 30 m.
The Three Scamps, WJZ
Time, weather, sports, WBZ
"Unsolved Mysteries," WLW, 30 m.
"The Republican Reaction," Representative
Chester C. Bolton of Ohio, WABC
Jack Miles' Orchestra, WGY
"Moonbeams," WOR
U. of Louisville Musicale, WHAS
Devodiers' Orchestra, WMCA
- 11.15 P.M. EDT; 10.15 EST;
9.15 CT
Clyde Lucas' Orchestra, WEAFF WEEI
Voice at Eventide, Robert Simmons, WJZ
WBZ
News and Orchestra, KDKA
News and Charlie Davis' Orchestra, WABC
WCAU
Roth Andrew's Orchestra, WMCA
- 11.30 P.M. EDT; 10.30 EST;
9.30 CT
News and Vincent Lopez' Orchestra, WEAFF
WEEI WTIC WGY, 30 m.
News, WJZ
Milton Ebbins, Ambassadors, WBZ
Joseph Nuano's Hawaiians, WLW, 30 m.
Bud Fisher's Orchestra, WOR, 30 m.
Orchestra, WGN, 3 h.
Lloyd Huntley's Orchestra, KDKA
Orchestras, WGN, 3 hrs., 30 m.
- 11.45 P.M. EDT; 10.45 EST;
9.45 CT
Leon Belasco's Orchestra, WEAFF WEEI
WTIC WGY WLW, 30 m.
Crosley Choir, WLW
- 12 M. EDT; 11 P.M. EST; 10 CT
Harold Stern's Orchestra, WEAFF WEEI
WJAZ WTIC WGY, 30 m.
Tom Gentry's Orchestra, WJZ, 30 m.
Jack Berger's Orchestra, WOR
- 12.30 A.M. EDT; 11.30 EST;
Seymour Simon's Orchestra, WEAFF WEEI
WTIC WLW, 30 m.
Sam Robbins' Orchestra, WABC WCAU
WTAM WJZ WCAU
Ted Black's Orchestra, WJZ WBZ KDKA
Seymour Simon's Orchestra, WGY WLW,
30 m.
Centennial Program, WHAM, 30 m.

Fraternity Chorus On WEAFF June 9

The 24th annual Interfraternity Sing of the University of Chicago will be broadcast over the NBC-WEAF network Saturday, June 9, from 10.30 to 11 P. M. Members of the Greek letter societies of the university will take part. HENRY HORNER, Governor of Illinois, and Dr. ROBERT M. HUTCHINS, president of the university, will open the program with brief addresses.

POWERS' Asthma Relief

has been a boon to the afflicted for over 50 years.
6 oz. 60c - 18 oz. \$1.20.



Buy at Your Local Druggist's or Write Direct
E. C. POWERS COMPANY
Box 62, Dorchester Center Station, Boston

Reflections

By Diana Herbert

The MICROPHONE'S Fashion Observer

BIG HATS are becoming more firmly established as the season advances. In other years they have had their triumphs at garden parties, weddings and fashionable race-tracks, but not for several decades have they been of such importance in the mode.

Our present, day-time silhouette is actually dependent on them! Could not exist without them!

FOR WE have discarded the square shoulders, the leg of mutton sleeves, the epanlets, which contributed to the T silhouette of last year. But we have not abandoned the straight, slim skirt nor the desire to appear as slender as possible. The T silhouette is still with us, only it is the hat instead of the shoulders, that gives the necessary line.

A LOVELY FASHION—these large hats which are almost universally becoming. They are shallow-crowned, straight-brimmed, or with a slight forward dip, and sparingly trimmed. They are smartest in black, navy or white, or the natural yellow of old-fashioned leghorn. The smooth straws are best: leghorn (which is very chic, especially when worn with black) baku, panama and horsehair. Taffeta, dull-finished crepe de chine, the new synthetic alpaca, with all make becoming and comfortable hats to be worn right through the Summer. While the same large shapes are being ordered in felt by forward-looking females, who are doubtless planning to wear them with their first Fall tweeds.

THAT PERENNIALLY flattering trick of lining the brim with white or some pale shade has been revived. However, on the whole the feeling is against tricks and in favor of restraint (that is as regards everything but size). When flowers are used for trimming they are apt to be few and discreet. Small, shaggy, velvet chrysanthemums are sewn flat near the front of crown and brim. A long, lacquered feather is placed strategically to add width or height or balance, but never just stuck on for no definite reason.

LORETTA LEE wears a shallow, square-crowned capeline, such as PATOU sponsors, unadorned except for a feather on the top of the crown. This demand for height as well as breadth, manifests itself in different ways under the guidance of different designers. MOLYNEUX puts shallow, pointed crown on his enormous coolie hats. Others place a feather or a knot of ribbon in the center of the crown. Still others turn their huge brims back off the face in an upward movement.

Igor Gorin Sings Two NBC Recitals

IGOR GORIN, young Russian baritone recently featured on a RUDY VALLEE program, is now heard in two broadcasts a week over the NBC-WJZ network.

He is featured on a program of his own Thursdays at 8.45 P. M. Beginning Sunday, June 3, he will be soloist on the International Tidbits broadcasts at 5.30 P. M.

GORIN began his vocal studies in Vienna at the age of 18. He came to America only six months ago.

Program of Anthems

Familiar anthems and oratorio chorals will be presented in a series of weekly programs by soloists, chorus and orchestra over the NBC-WEAF network, beginning Monday, June 4, at 10.30 P. M. The program is to be called "Gothic Echoes" and the artists participating will remain anonymous.

A Confederate



HELEN CLAIRE, who has recently assumed the leading role in the "Roses and Drums" programs broadcast over the CBS-WABC network on Sundays at 6 P. M.

NBC Engineer Talks About Short Wave

(Continued from Page 1)

ranging in power from 7½ to 150 watts. These are portable and are used to relay programs to the networks for rebroadcast, from points where wire lines are not available.

Another class operated by NBC are the three experimental television transmitters, W2XBS at Bellmore, Long Island; W2XF on the top of the Empire State Building in New York, and W9XAP in Chicago. The first two operate on 5000 watts, the last on 2500.

At the present time the NBC also has transmitters at sea; those now aboard PHILLIPS LORD's schooner, the "Seth Parker" in the Caribbean, en route on a cruise around the world.

Under the call letters KNRA, these include the standard ship transmitter, and also a short-wave broadcast transmitter operating on 1000 watts, which sends programs from the schooner to the NBC networks.

The ship also carries a 55-watt voice transmitter, W1OXG.

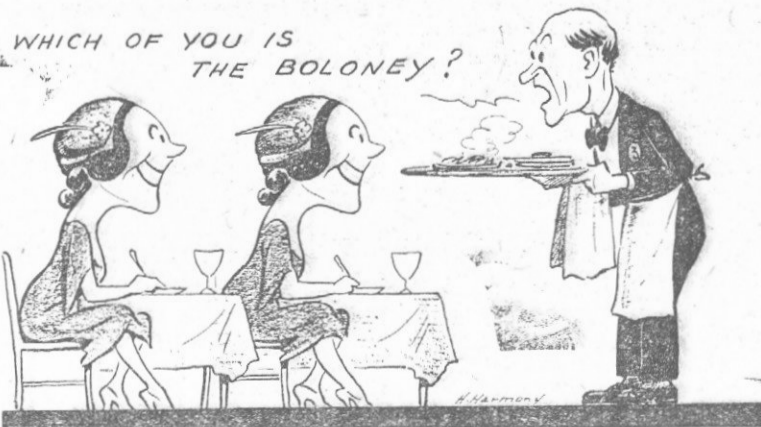
Then finally there are a number of low power portable transmitters, ranging from half a watt to 150 watts, which operate on frequencies ranging from approximately 17,000 to approximately 400,000 kilocycles.

These are used in sending to the networks such widely varying programs at those from stratosphere balloons, from parades on Fifth Avenue, from planes in flight, etc.

The air is full of activity below the broadcast band which is not even suspected by the average listener, but which results in bringing unusual programs to the NBC networks, sending them speeding around the world to foreign countries, and, in the case of the experimental transmitters, adding to the world's knowledge of radio.

Ready For Television

WHICH OF YOU IS THE BOLONEY?



HELEN BROWN, impersonator on the "Forty-Five Minutes To Hollywood" program, not only has a perfectly natural SYLVIA SIDNEY voice, but her resemblance to the movie star is so striking that she frequently is taken for Miss SIDNEY.

Nimblewits

By Everett Smith

"Wit Teasers" on Sunday at 11.30 A. M. from WBZ

NO. 1. (no time limit) The continuing interest in Cryptograms leads to the publication of another from a recent issue of "The Cryptogram":

ZJV DJLCKAVN UAP NJKMCV, DUAFC MJKQ PLBKZ TFBXMP JYYCJK, TFJAZP, "OBX TJVL DJLCK LUC NJKMCV DUCV AL KJAVP. OBX NCL JFF DCL."

Old Time Music Hall Play on Air

A condensed version of "The Drunkard," a temperance play first produced in 1843 by P. T. BARNUM and revived on Broadway this year by HARRY BANNISTER, will be broadcast over the CBS-WABC network, June 6, at 11 P. M.

The play will be acted by the same cast that is currently performing in the stage production at the American Music Hall in New York.

"The Drunkard" at the moment is one of New York's most popular diversions. The American Music Hall has been decorated to recapture the atmosphere of the old "Music Hall" of BARNUM's era. The audience is seated at tables, enabling its members to sip beer and eat pretzels during the performance.

A program note requests "men and women" to refrain from cracking peanuts.

"Ladies and Gentlemen," the note concludes, "do not need to be thus cautioned."

Military Ceremony On Air

The annual ceremonies of "Massing The Colors," conducted by the Military Order of the World War, will be broadcast over the NBC-WJZ network on Sunday, May 27, at 5.30 P. M. Among the speakers will be Admiral WILLIAM H. STANDLEY, Chief of Naval Operations.

Q. and also A.

Q. How much of the \$6000 does ED WYNN receive after he has paid DON VOORHEES and orchestra, GRAHAM MCNAMEE and others?

S. R. M., Quincy, Mass.

A. The sponsors make a pecuniary settlement with each performer. ED WYNN keeps his \$6000 intact for himself. So they say.

Q. I am going to New York and would like to attend a few radio concerts while I am there. What is the procedure for acquiring tickets? T. V., Baltimore, Md.

A. If the concert you desire to see is commercialized, write to the sponsors for tickets. If it is not sponsored, write to the radio station. Be sure to specify the date you wish to attend.

New Religious Programs Are On the NBC Schedule

A number of new programs of religion will be broadcast over the National Broadcasting Company's networks this Summer.

On Sunday, June 3, at 6 P. M., the Reverend DANIEL A. LORD, S. J., will inaugurate a series on the WEAFF chain; at 5 on the WJZ chain the first of Sunday Vespers series will be given, with Dr. FREDERICK H. KNUBEL and Dr. PAUL SCHERER officiating.

Dr. WILLIAM HIRAM FOULKES, pastor of the Old First Presbyterian Church of Newark, New

Jersey, will replace Dr. STANLEY HIGH Saturdays at 7.15 P. M., on the WEAFF chain, beginning June 2. The new program is called "Homespun."

Among the regular weekly religious programs already started are the Sunday Forum (WJZ at 1.30 P. M.) presented by Dr. RALPH W. SOCKMAN, and the Sabbath Reveries (WEAF at 10 A. M.) with Dr. CHARLES L. GOODELL.

Later in the Summer the Reverend PETER J. BERGEN, C. S. P., will replace Father LORD; and Dr. FREDERICK K. STAMM will present Highlights of the Bible in place of Dr. SOCKMAN's Sunday Forum.

Belmont Race Is Broadcast

The sixty-sixth running of the Belmont Stake, richest horse race in the world, will be described over the WABC-Columbia network on Saturday, June 9 at 4 P. M.

The race will be reported by THOMAS GEORGE, CBS turf expert. The classic event will be run over a mile and a half and will pay the winner approximately \$45,000.

No. 2 (one minute) Try arranging the five digits 1, 2, 3, 4, and 5, in such an order that the first two digits, when multiplied by the middle figure, will give a number composed of the last two digits.

No. 3. (3 minutes) The letters in each of the words below can be arranged to spell two other words. Can you find them?

SATIN ROOST LATTER

No. 4. (3 minutes) Let's travel the alphabet! Try naming a city, state, or country for each letter of the alphabet in three minutes.

No. 5. (3 minutes) And speaking of traveling, try rearranging the letters in each group below to form the name of some city, state, or country.

I SPAR DOST CLAN
OR YAWN I LOST US
OLD FAIR.

Answers to Last Week's Nimblewits

No. 1. If you wish to interpret code messages during wartime, you should try to solve crypts.

No. 2 Fish, Dish, Disk, Risk, Rick, Rock, Hock, Hook.

No. 3. Tarpon, Perch, Bass, Trout, Shad, Pickerel, Salmon, Mackerel, etc.

No. 4. 8 pounds.

No. 5. Sever, Several, Eve, Ever, Era, Rally, Ally, All.

Telephone Talk From Chinatown

While Mrs. CHING LEE orders a pound of rice for dinner from the corner delicatessen, or Mrs. SING HI invites her cousin SING LO over for a game of Mah Jong in San Francisco's Chinatown on Friday, June 15, the nation will be listening in.

On that date microphones will be set up in the Chinatown telephone exchange between 10.45 and 11 P. M. and pick up the details of Chinese-American life. The broadcast will be heard over the WABC network.

One of the interesting features of this telephone exchange is that the calls are made by name instead of number.

Goldman Special Concert

EDWIN FRANKO GOLDMAN, American band leader, will conduct a special concert by massed bands numbering more than 5000 musicians over the NBC-WEAF network on Saturday, June 2, at 5.30 P. M.

STATION DIRECTORY

Page 4

The Poetic Age

By Rosellen Callahan

THE AGE of poetry is returning. David Ross, whose program, "Poet's Gold," is heard over the Columbia Broadcasting System, is proving that poetry is still capable of working its ancient magic.

He believes that poetry is the shortest route to the heart. "There is a certain universality of appeal in the poetry that deals with man's longing and his relationship to things about him," he says.

And the truth of this is evidenced by the fact that the program is deeply appreciated by people in all parts of life. "Poet's Gold" has drawn responses from public officials, professors, housewives, clerks and cab drivers.

In planning a program of poetry reading Ross is careful not to select poems of too great subtlety.

"I have learned," he says, "that the medium of radio demands each poem shall create an instantaneous emotional reaction. There is no going back once the word is spoken.

"A poem, should therefore, be chosen for its simplicity and for its intimacy. It must contain an experience that is familiar to most mortals, so that it may be readily appreciated by them.

"The subtle poem, one that requires meditation, belongs to the reading room. But the poem that is read must arouse an immediate response. The printed poem is as inanimate as a scored sheet of music. It only begins to live when the voice stirs it to life."

Ross is endeavoring to eliminate the stigma that has become attached to reading aloud. Poetry has been generally disliked because of the outrageous manner in which it usually is presented.

Most people lapse into a kindergarten sing-song, or work themselves up into a maniacal frenzy which is distressing to the listener.

Poetry has been mistaught in schools, Ross believes, and people have grown up disliking it because of the unpleasant memory of their school days. But as they have matured, and experienced through the course of life, sorrow, love, hunger, ambition, happiness, they begin to find in a poem a certain personal fulfillment and expression of their own desires and experiences.

To quote the poet-announcer: "Poems are written by

mortals, and should be read with the grace of mortals, not in the thunder of demigods, or with satanic snortings."

It is the natural manner he employs, as if he were talking to himself or a friend next to him, that is most admired by his listening audience.

Mr. Ross does not select poems because they are the best examples of form and metre. He does not read a sonnet because it scans perfectly or because the authorities have cited it as a faultless example of metrical composition. He rather prefers to read poems that are "Intimate, yet slightly remote; friendly, yet a trifle inaccessible, and always warm and intelligent."

"Poetry is the distillation of all that man has dreamed" says Mr. Ross. "Ever since he became articulate man has expressed himself in moments of great emotional crisis through the medium of song and poetry."

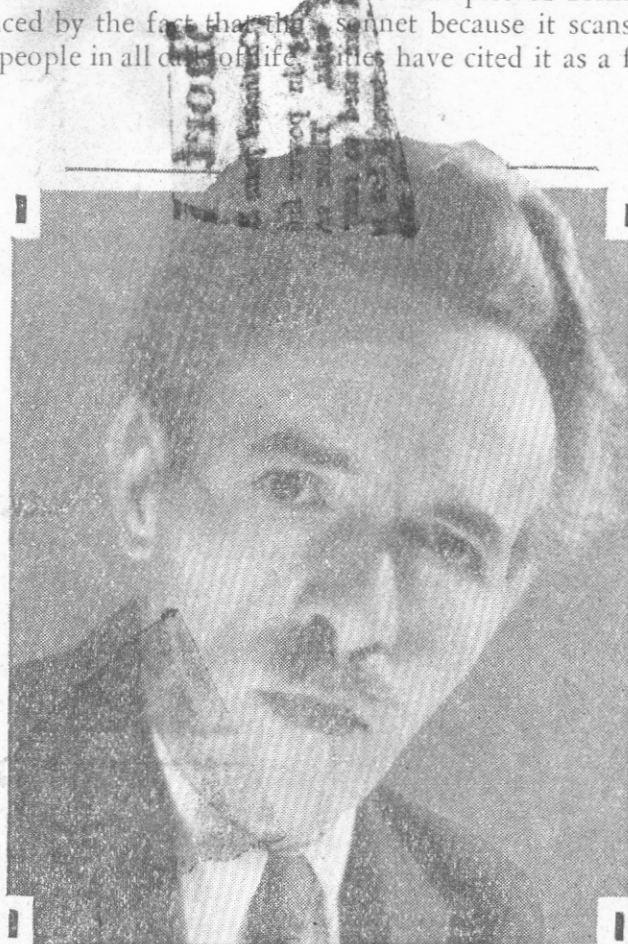
Mr. Ross has found that in reading verse over the air a greater emotional response can best be elicited if there is an unobtrusive musical background, and so Emery Deutsch's orchestra softly accompanies his readings with haunting, stirring strains.

Most of the verses read on his program were selected because they are particularly adapted to reading aloud. They have recently been compiled in his new anthology called "Poet's Gold," published by Macauley.

Not only has he drawn comment for his readings, but because he has made it a special task to give routine announcements something of dignity, human warmth and a friendly glamour, David Ross was voted the best studio announcer by radio editors all over the country in the World-Telegram radio editors poll for the last two years.

In 1932 his work on radio was judged the best example of diction, pronunciation and vocal perfection, and he received the gold medal of the American Academy of Arts and Letters, as symbol of the award.

This talented young man is himself a poet of no little ability. He is rather reticent when it comes to discussing his own talents, but admitted to having contributed verse to various periodicals.



DAVID ROSS, CBS announcer, whose program called "Poet's Gold" is remarkably popular.



MICROPHONE

THE ORIGINAL U.S. RADIO NEWSPAPER

Programs For Week Beginning June 2

5¢
Radio Weekly



Peggy Davis, NBC Actress

NOTICE: The images and text contained in this file were scanned from a private collection. It is prohibited to sell by auction on ebay or to sell by any method at any venue or by any technique. Permission is granted to copy these files and to freely give away or trade. These files were created for archival purposes and not for financial gain.